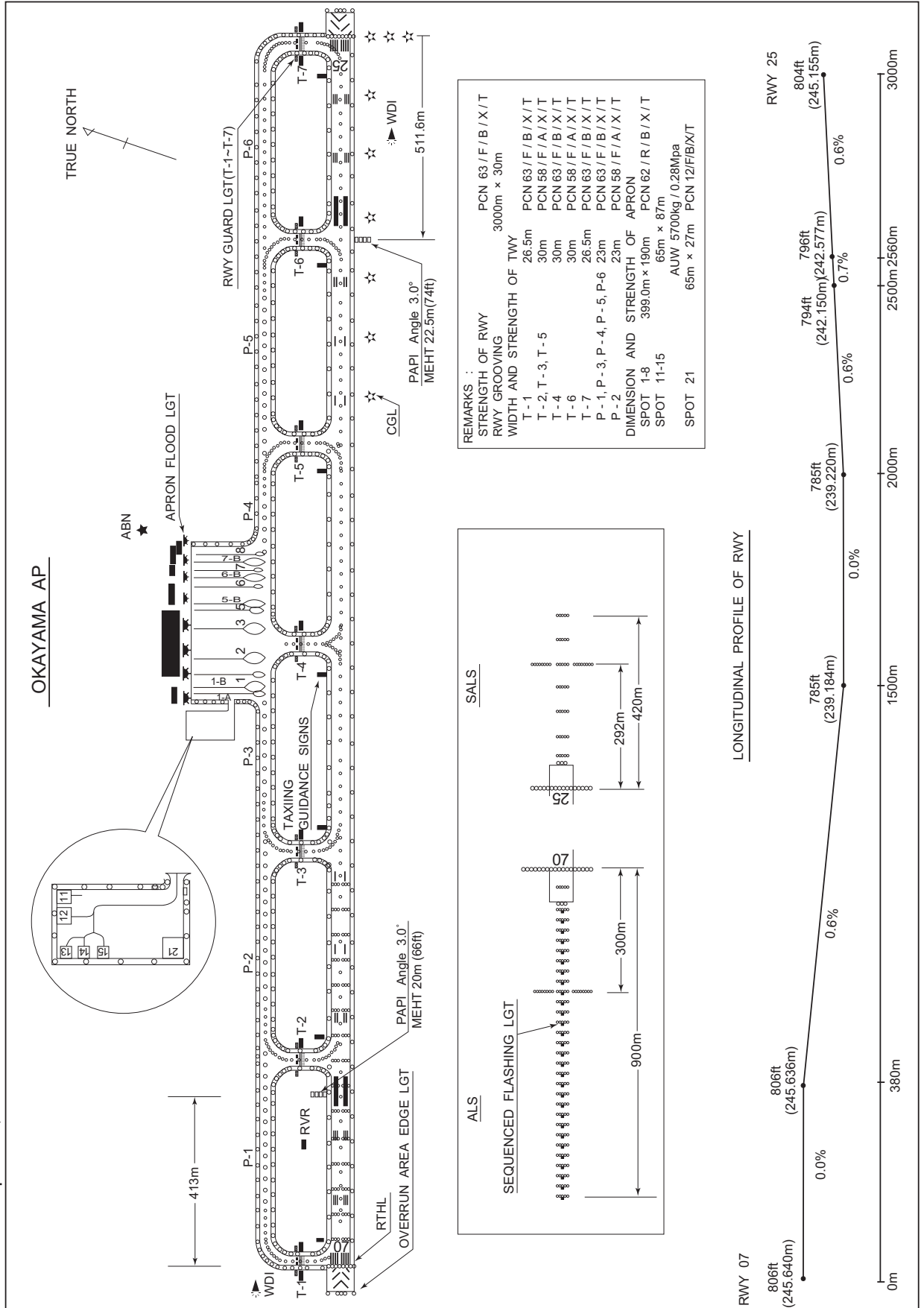


RJOB / OKAYAMA

AD CHART

CHANGE : Spot 1A, 1B installed.



INTENTIONALLY LEFT BLANK

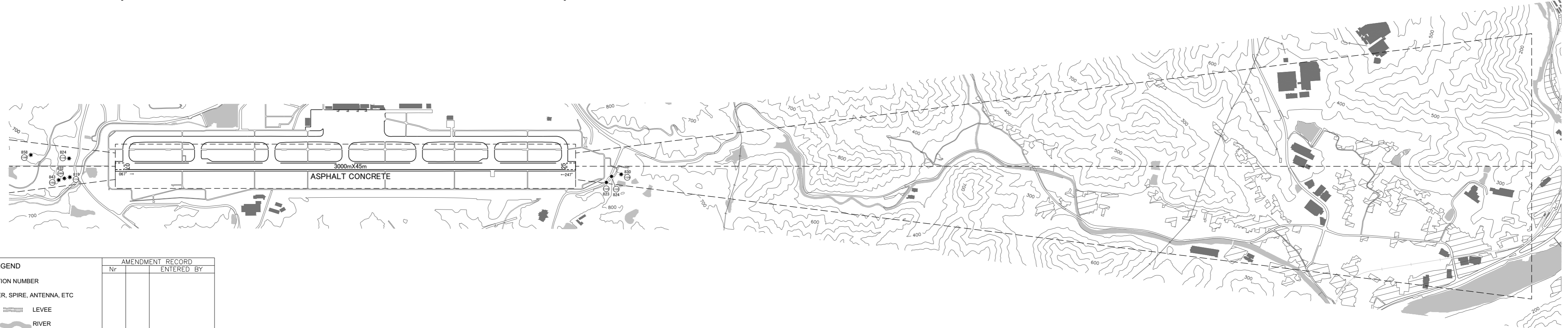
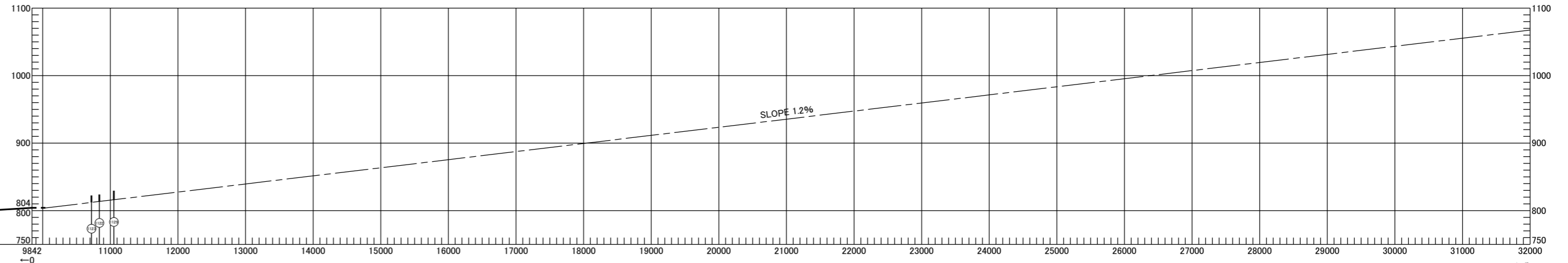
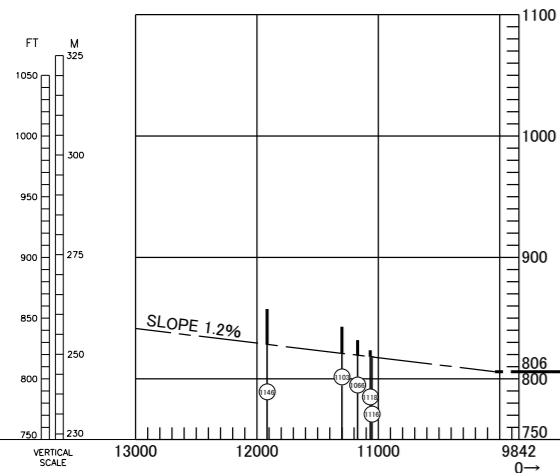
DIMENSIONS AND ELEVATIONS IN FEET BEARINGS ARE MAGNETIC
Transverse Mercator Projection

**AERODROME OBSTACLE CHART - ICAO
TYPE A (OPERATING LIMITATIONS)**

MAGNETIC VARIATION 8°W - MAR 2022

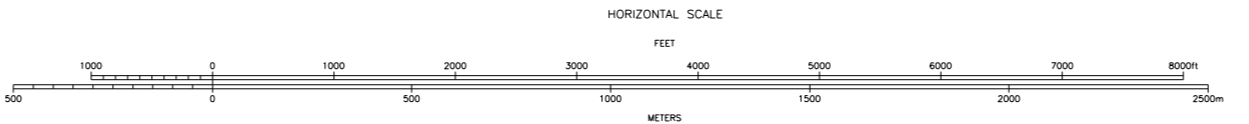
OKAYAMA AIRPORT
RWY : 07/25

DECLARED DISTANCES		
RWY07		RWY25
3000m	TAKE OFF RUN AVAILABLE	3000m
3000m	TAKE OFF DISTANCE AVAILABLE	3000m
3000m	ACCELERATE STOP DISTANCE AVAILABLE	3000m
3000m	LANDING DISTANCE AVAILABLE	3000m



- LEGEND**
- ① IDENTIFICATION NUMBER
 - ⊙ POLE, TOWER, SPIRE, ANTENNA, ETC
 - * TREE
 - ▬ RAILROAD
 - ▬ TRANSMISSION LINE OR OVERHEAD CABLE
 - ▲ TRIANGULATION POINT
 - ★ AERONAUTICAL GROUND LIGHT
 - BUILDING OR LARGE STRUCTURE
 - ▭ CONTOURS(FT)
 - ▬ LEVEE
 - ▬ RIVER

AMENDMENT RECORD	
Nr	ENTERED BY

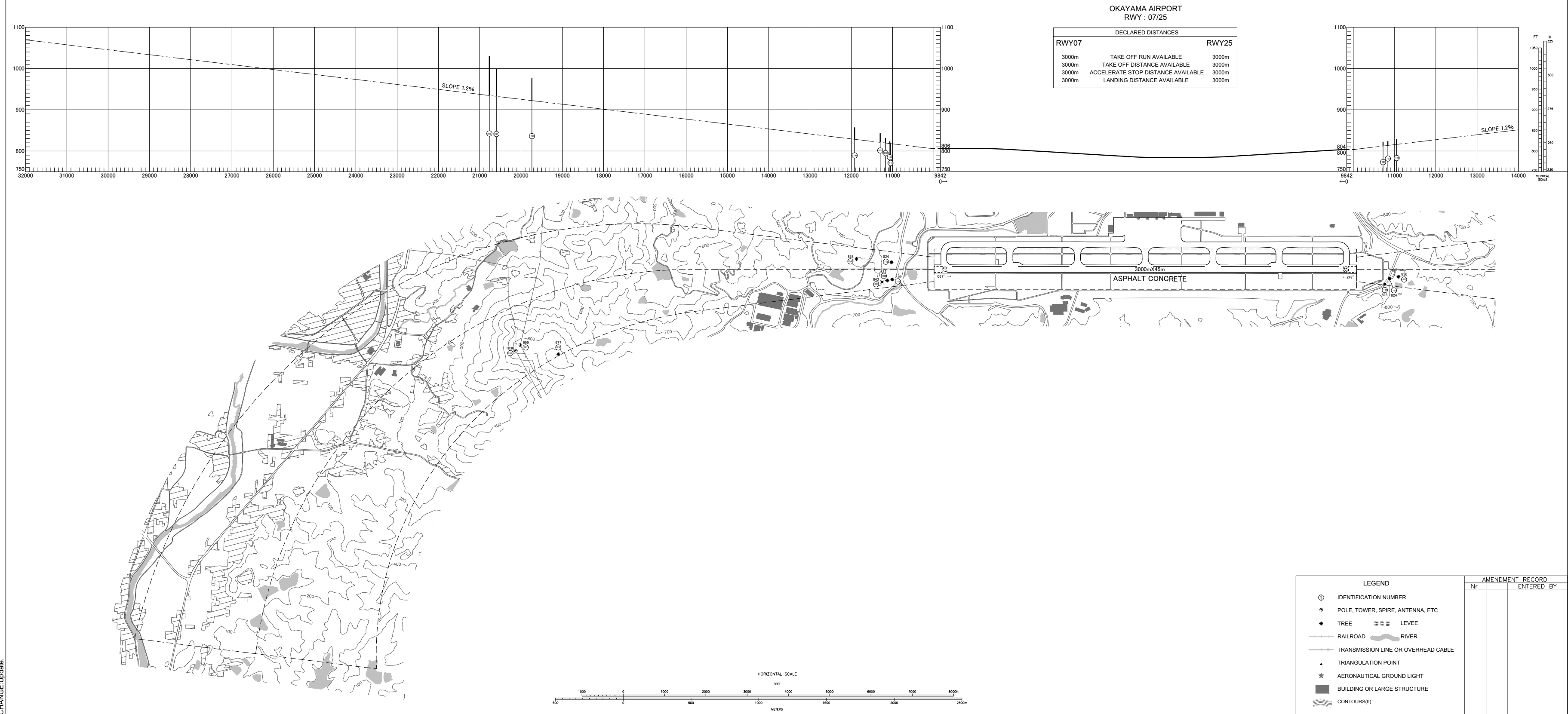


CHANGE: Update:

AERODROME OBSTACLE CHART - ICAO
TYPE A (OPERATING LIMITATIONS)

DIMENSIONS AND ELEVATIONS IN FEET BEARINGS ARE MAGNETIC
Transverse Mercator Projection

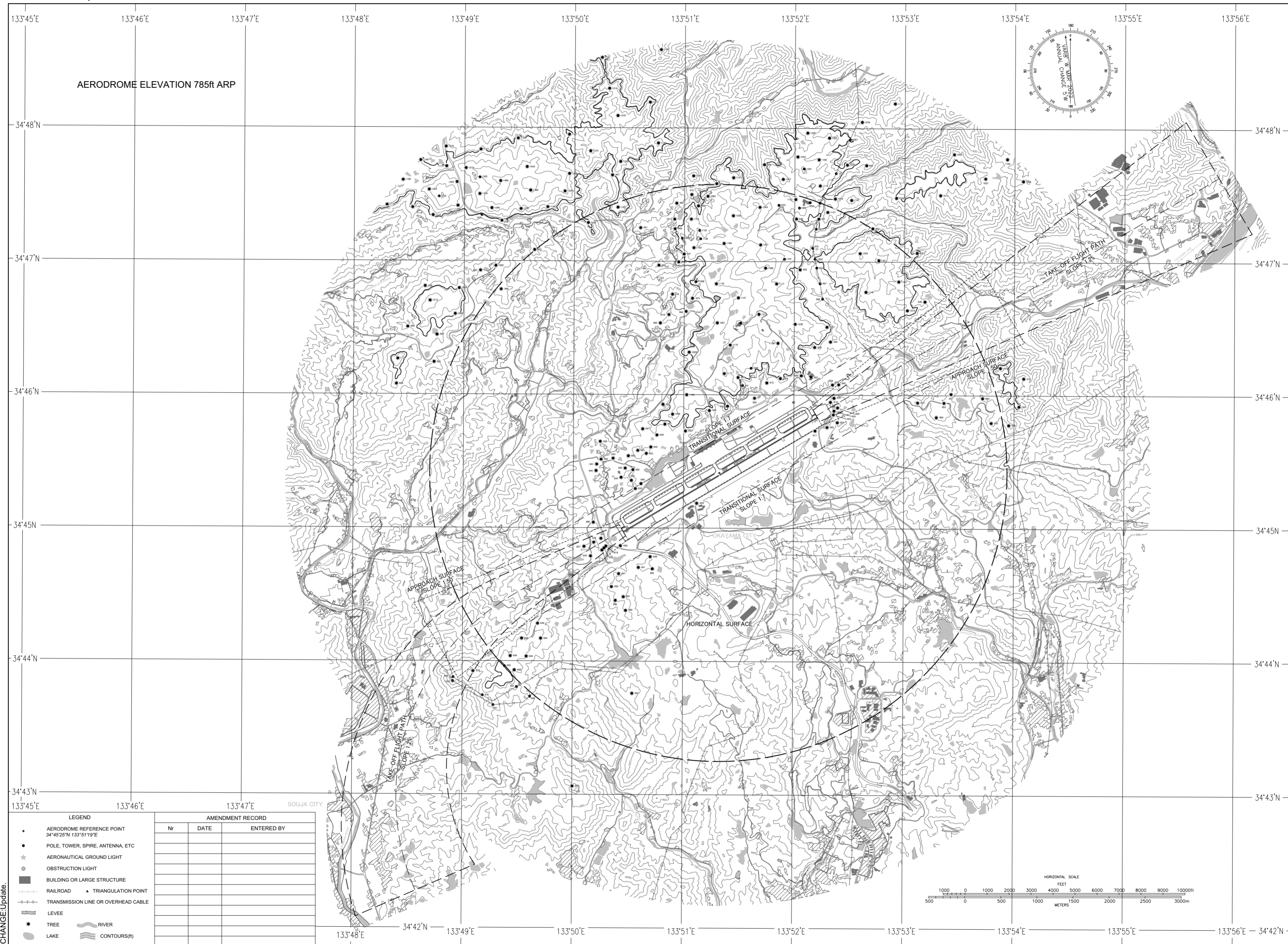
MAGNETIC VARIATION 8°W - MAR 2022



CHANGE: Update.

DIMENSIONS AND ELEVATIONS IN FEET BEARINGS ARE MAGNETIC
Transverse Mercator Projection

AERODROME OBSTACLE CHART-ICAO
TYPE B



AERODROME ELEVATION 785ft ARP

LEGEND		AMENDMENT RECORD		
•	AERODROME REFERENCE POINT 34°45'25"N 133°51'19"E	Nr	DATE	ENTERED BY
●	POLE, TOWER, SPIRE, ANTENNA, ETC			
★	AERONAUTICAL GROUND LIGHT			
✱	OBSTRUCTION LIGHT			
■	BUILDING OR LARGE STRUCTURE			
—+—+—	RAILROAD ▲ TRIANGULATION POINT			
—+—+—	TRANSMISSION LINE OR OVERHEAD CABLE			
—+—+—	LEVEE			
●	TREE			
—	RIVER			
○	LAKE			
—	CONTOURS(1)			

CHANGE/Update

STANDARD DEPARTURE CHART - INSTRUMENT

RJOB / OKAYAMA

SID

KIBI REVERSAL SIX DEPARTURE

RWY 07 : Climb RWY HDG to 1400FT, via OYE R071 to 9.0DME, turn right,...

RWY 25 : Climb RWY HDG to 1400FT, turn left, via OYE R226 to 6.0DME, turn left,...

...direct to OYE VOR/DME.

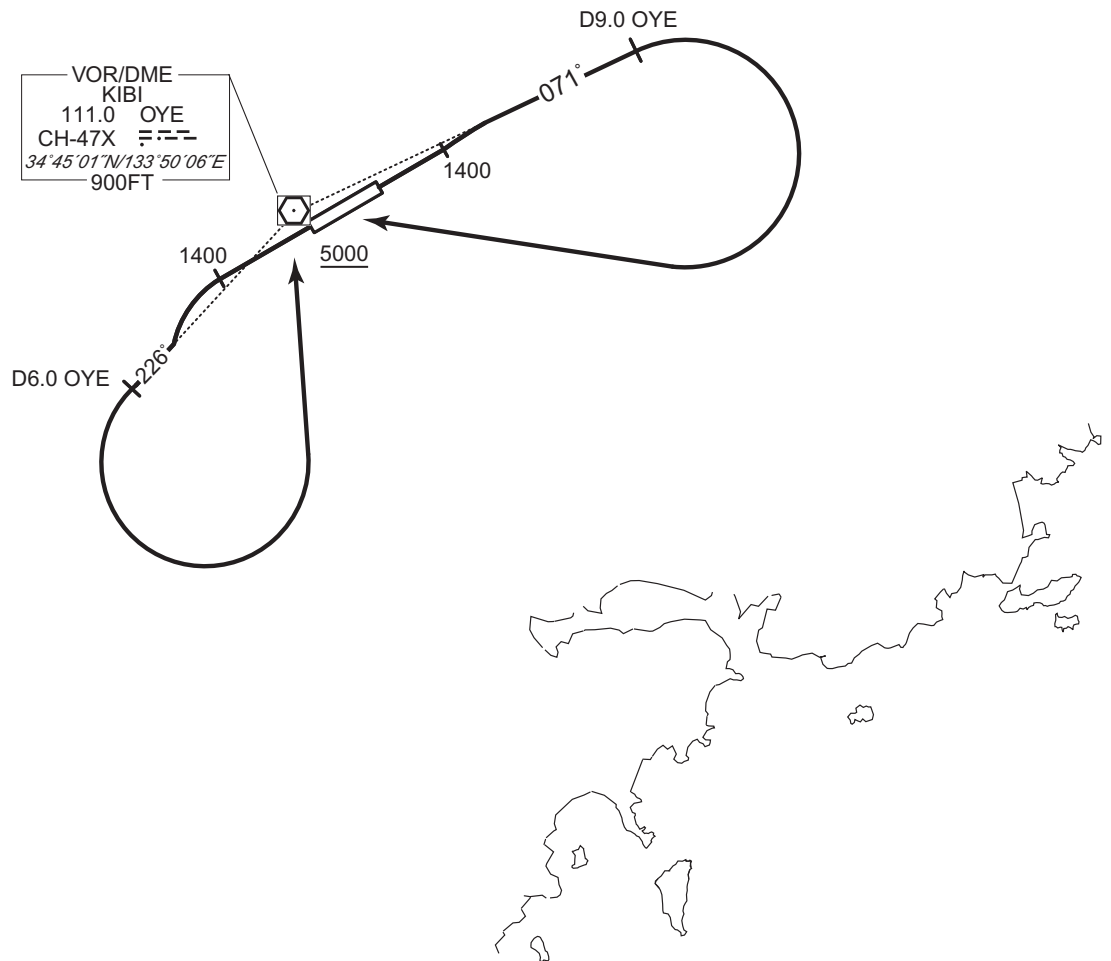
Cross OYE VOR/DME at or above 5000FT.

Note RWY07 : 5.3% climb gradient required up to 1400FT.

OBST ALT 1083FT located at 1.0NM 047° FM end of RWY07.

RWY25 : 4.0% climb gradient required up to 1400FT.

OBST ALT 1017FT located at 1.1NM 228° FM end of RWY25.



CHANGE : Description of PROC name.

STANDARD DEPARTURE CHART - INSTRUMENT

RJOB / OKAYAMA

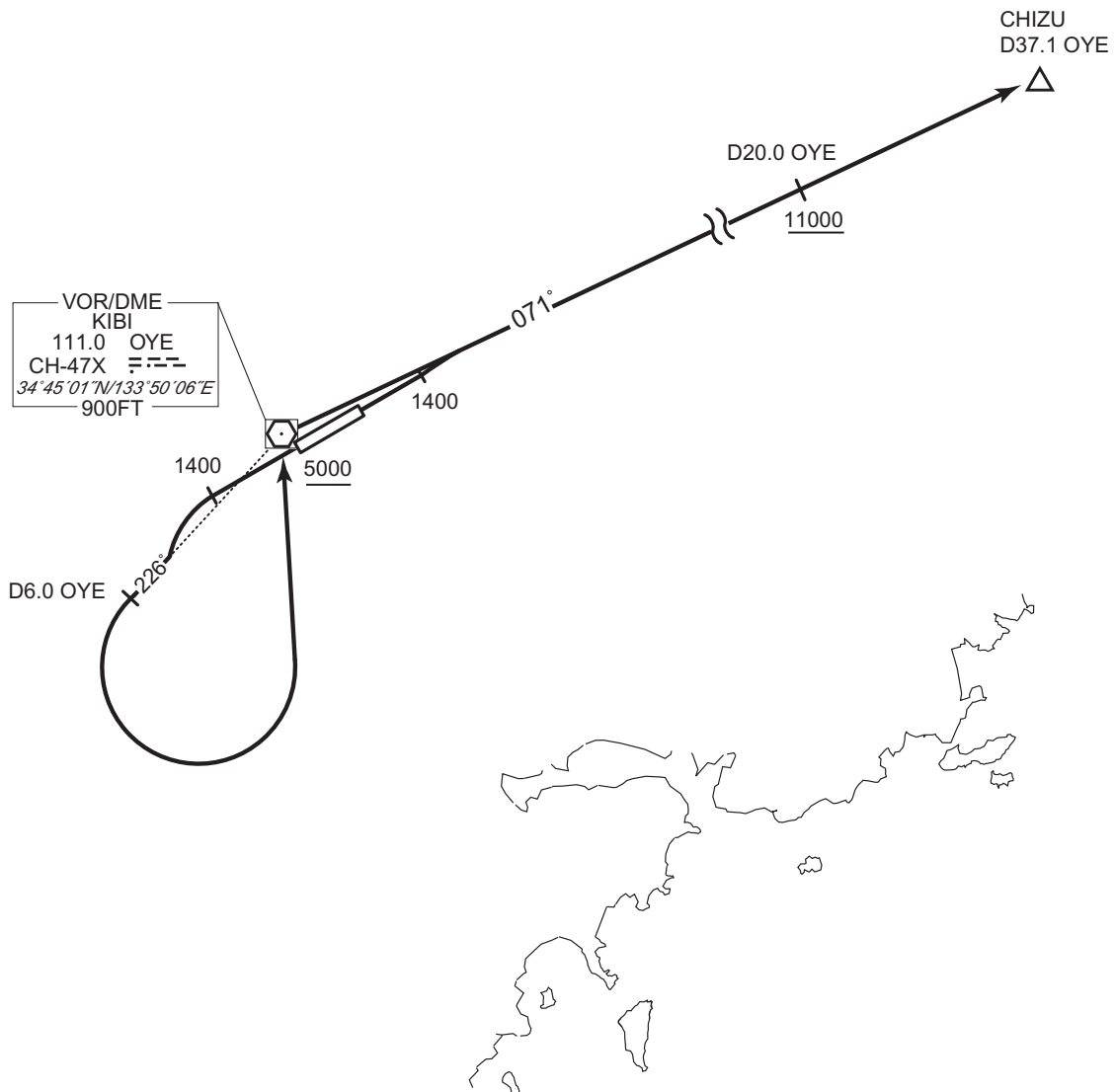
SID

CHIZU TWO DEPARTURE

RWY 07 : Climb RWY HDG to 1400FT, via OYE R071 to CHIZU.
Cross OYE R071/20.0DME at or above 11000FT.

RWY 25 : Climb RWY HDG to 1400FT, turn left, via OYE R226 to 6.0DME, turn left,
direct to OYE VOR/DME, via OYE R071 to CHIZU.
Cross OYE VOR/DME at or above 5000FT.
Cross OYE R071/20.0DME at or above 11000FT.

Note RWY07 : 5.3% climb gradient required up to 1400FT.
OBST ALT 1083FT located at 1.0NM 047° FM end of RWY07.
RWY25 : 4.0% climb gradient required up to 1400FT.
OBST ALT 1017FT located at 1.1NM 228° FM end of RWY25.



CHANGE : Description of PROC name.

STANDARD DEPARTURE CHART - INSTRUMENT

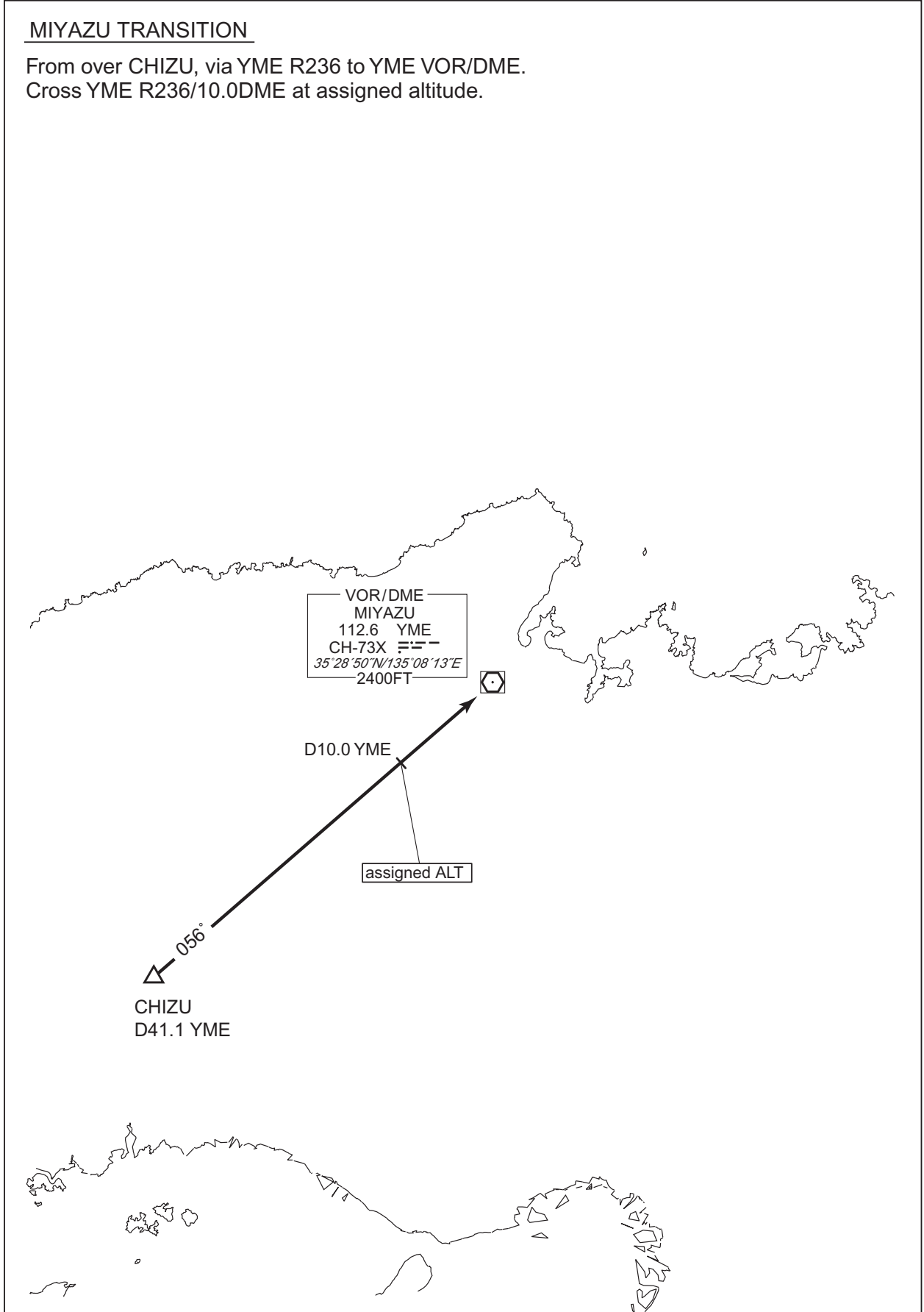
RJOB / OKAYAMA

TRANSITION

MIYAZU TRANSITION

From over CHIZU, via YME R236 to YME VOR/DME.
Cross YME R236/10.0DME at assigned altitude.

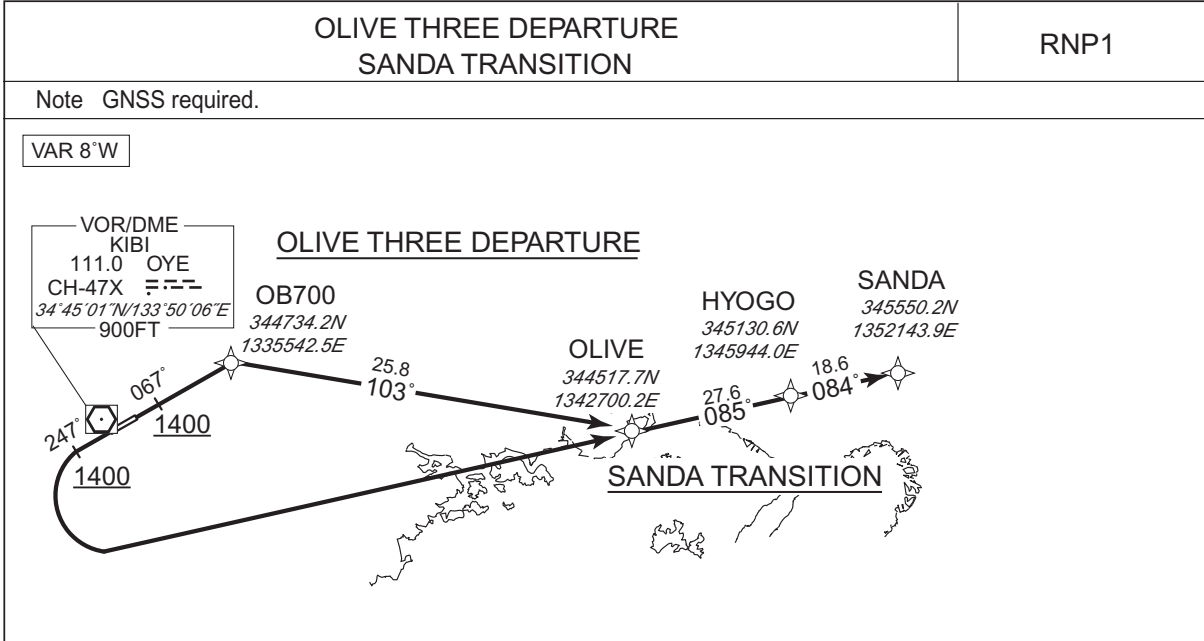
CHANGE : Description of PROC name.



STANDARD DEPARTURE CHART - INSTRUMENT

RJOB / OKAYAMA

RNAV SID and TRANSITION



OLIVE THREE DEPARTURE

RWY07 : Climb on HDG067° at or above 1400FT, direct to OB700, to OLIVE.
 RWY25 : Climb on HDG247° at or above 1400FT, turn left direct to OLIVE.
 Note RWY07 : 5.4% climb gradient required up to 1400FT.
 RWY25 : 4.0% climb gradient required up to 1600FT.
 OBST ALT 1922FT located at 5.0NM 104° FM end of RWY25.

SANDA TRANSITION

From OLIVE, to HYOGO, to SANDA.

CHANGE : Navigation Specification(Basic RNP1 → RNP1).

STANDARD DEPARTURE CHART - INSTRUMENT

RJOB / OKAYAMA

RNAV SID and TRANSITION

OLIVE THREE DEPARTURE

RWY07

Serial Number	Path Descriptor	Waypoint Identifier	Fly Over	Course °M(°T)	Magnetic Variation	Distance (NM)	Turn Direction	Altitude (FT)	Speed (KIAS)	Vertical Angle	Navigation Specification
001	VA	-	-	067 (059.1)	-8.1	-	-	+1400	-	-	RNP1
002	DF	OB700	-	-	-8.1	-	-	-	-	-	RNP1
003	TF	OLIVE	-	103 (094.9)	-8.1	25.8	-	-	-	-	RNP1

RWY25

Serial Number	Path Descriptor	Waypoint Identifier	Fly Over	Course °M(°T)	Magnetic Variation	Distance (NM)	Turn Direction	Altitude (FT)	Speed (KIAS)	Vertical Angle	Navigation Specification
001	VA	-	-	247 (239.1)	-8.1	-	-	+1400	-	-	RNP1
002	DF	OLIVE	-	-	-8.1	-	L	-	-	-	RNP1

SANDA TRANSITION

Serial Number	Path Descriptor	Waypoint Identifier	Fly Over	Course °M(°T)	Magnetic Variation	Distance (NM)	Turn Direction	Altitude (FT)	Speed (KIAS)	Vertical Angle	Navigation Specification
001	IF	OLIVE	-	-	-8.1	-	-	-	-	-	RNP1
002	TF	HYOGO	-	085 (076.8)	-8.1	27.6	-	-	-	-	RNP1
003	TF	SANDA	-	084 (076.4)	-8.1	18.6	-	-	-	-	RNP1

CHANGE : Navigation Specification(Basic RNP1 → RNP1).

STANDARD DEPARTURE CHART - INSTRUMENT

RJOB / OKAYAMA

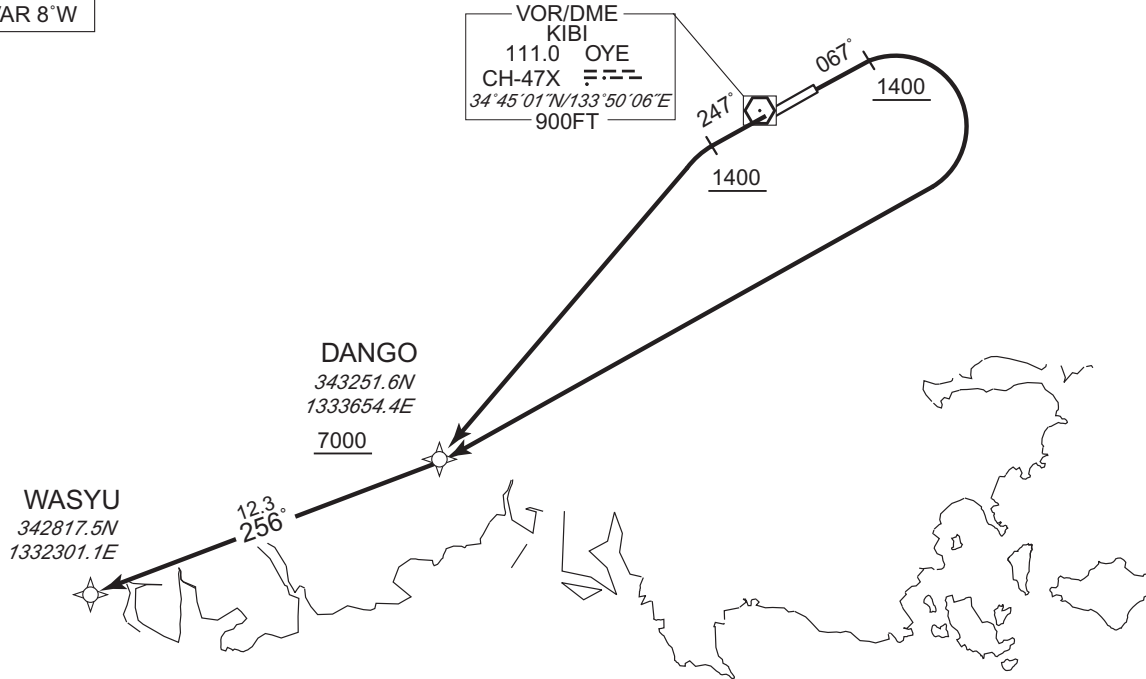
RNAV SID

WASYU TWO DEPARTURE

RNP1

Note GNSS required.

VAR 8°W



RWY07 : Climb on HDG067° at or above 1400FT, turn right direct to DANGO at or above 7000FT, to WASYU.

RWY25 : Climb on HDG247° at or above 1400FT, turn left direct to DANGO at or above 7000FT, to WASYU.

Note RWY07 : 5.4% climb gradient required up to 2300FT.
OBST ALT 1922FT located at 3.8NM 118° FM end of RWY07.

RWY25 : 4.0% climb gradient required up to 1400FT.
OBST ALT 1018FT located at 1.1NM 227° FM end of RWY25.

RWY07

Serial Number	Path Descriptor	Waypoint Identifier	Fly Over	Course °M(°T)	Magnetic Variation	Distance (NM)	Turn Direction	Altitude (FT)	Speed (KIAS)	Vertical Angle	Navigation Specification
001	VA	—	—	067 (059.1)	-8.1	—	—	+1400	—	—	RNP1
002	DF	DANGO	—	—	-8.1	—	R	+7000	—	—	RNP1
003	TF	WASYU	—	256 (248.3)	-8.1	12.3	—	—	—	—	RNP1

RWY25

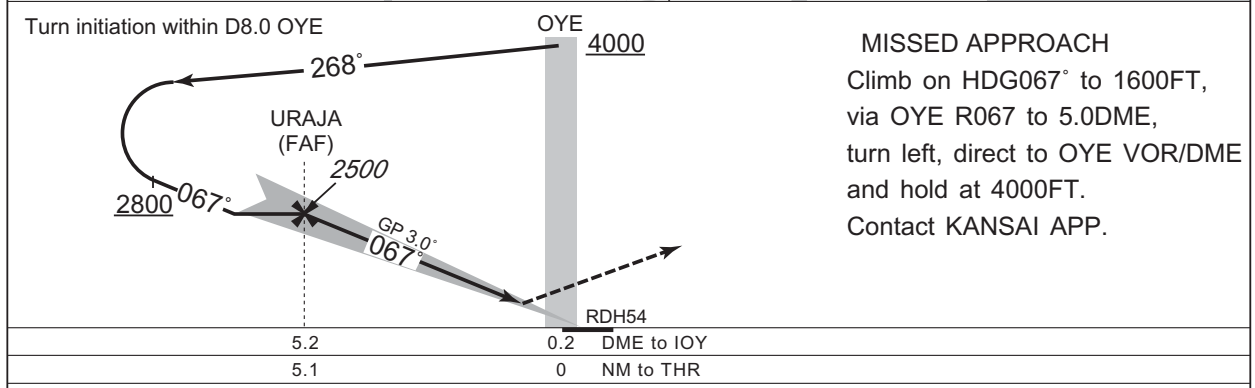
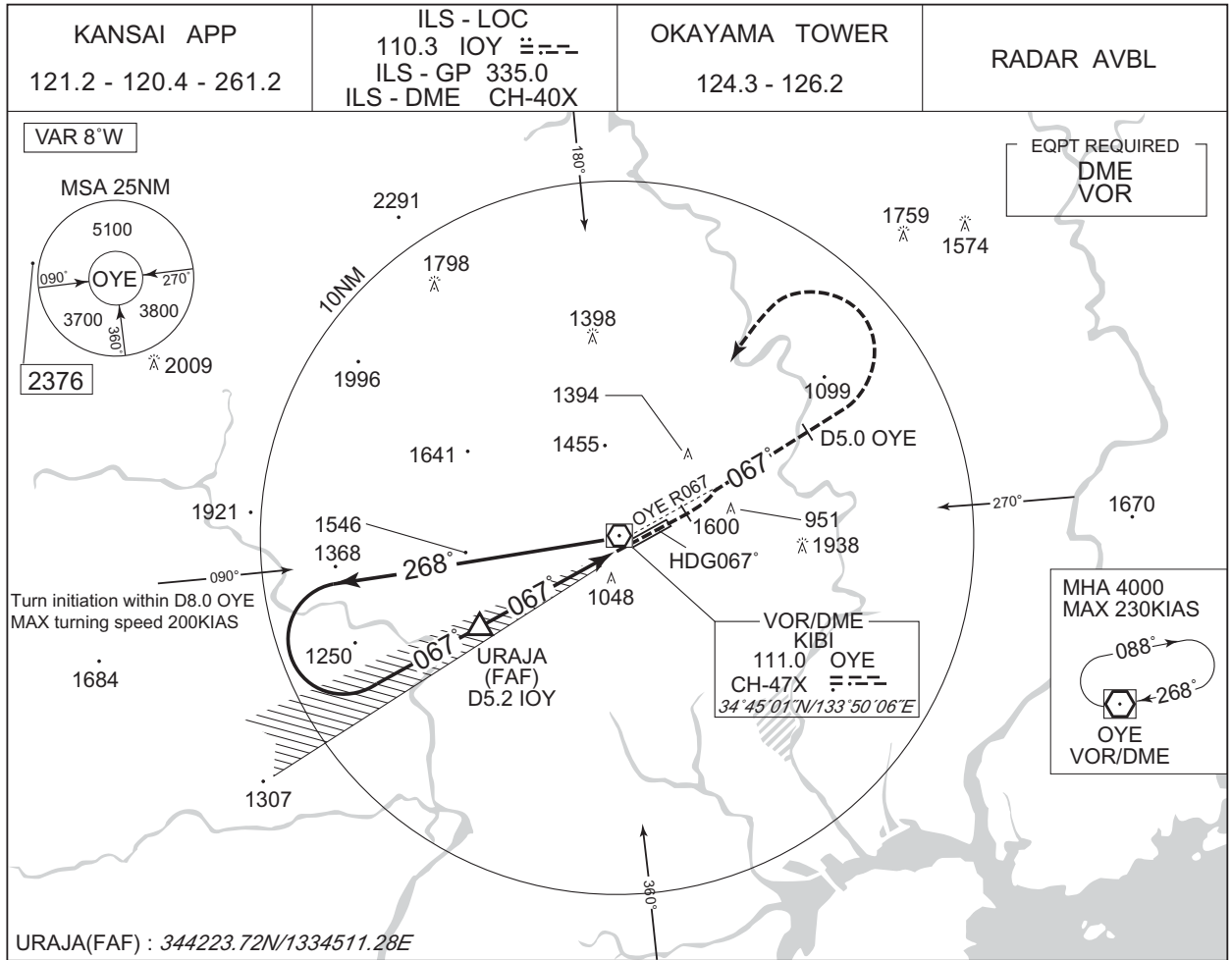
Serial Number	Path Descriptor	Waypoint Identifier	Fly Over	Course °M(°T)	Magnetic Variation	Distance (NM)	Turn Direction	Altitude (FT)	Speed (KIAS)	Vertical Angle	Navigation Specification
001	VA	—	—	247 (239.1)	-8.1	—	—	+1400	—	—	RNP1
002	DF	DANGO	—	—	-8.1	—	L	+7000	—	—	RNP1
003	TF	WASYU	—	256 (248.3)	-8.1	12.3	—	—	—	—	RNP1

CHANGE : Navigation Specification(Basic RNP1 → RNP1).

INSTRUMENT APPROACH CHART

RJOB / OKAYAMA

ILS Z RWY07



CHANGE : Description of VAR.

Missed APCH climb gradient MNM 5.0%

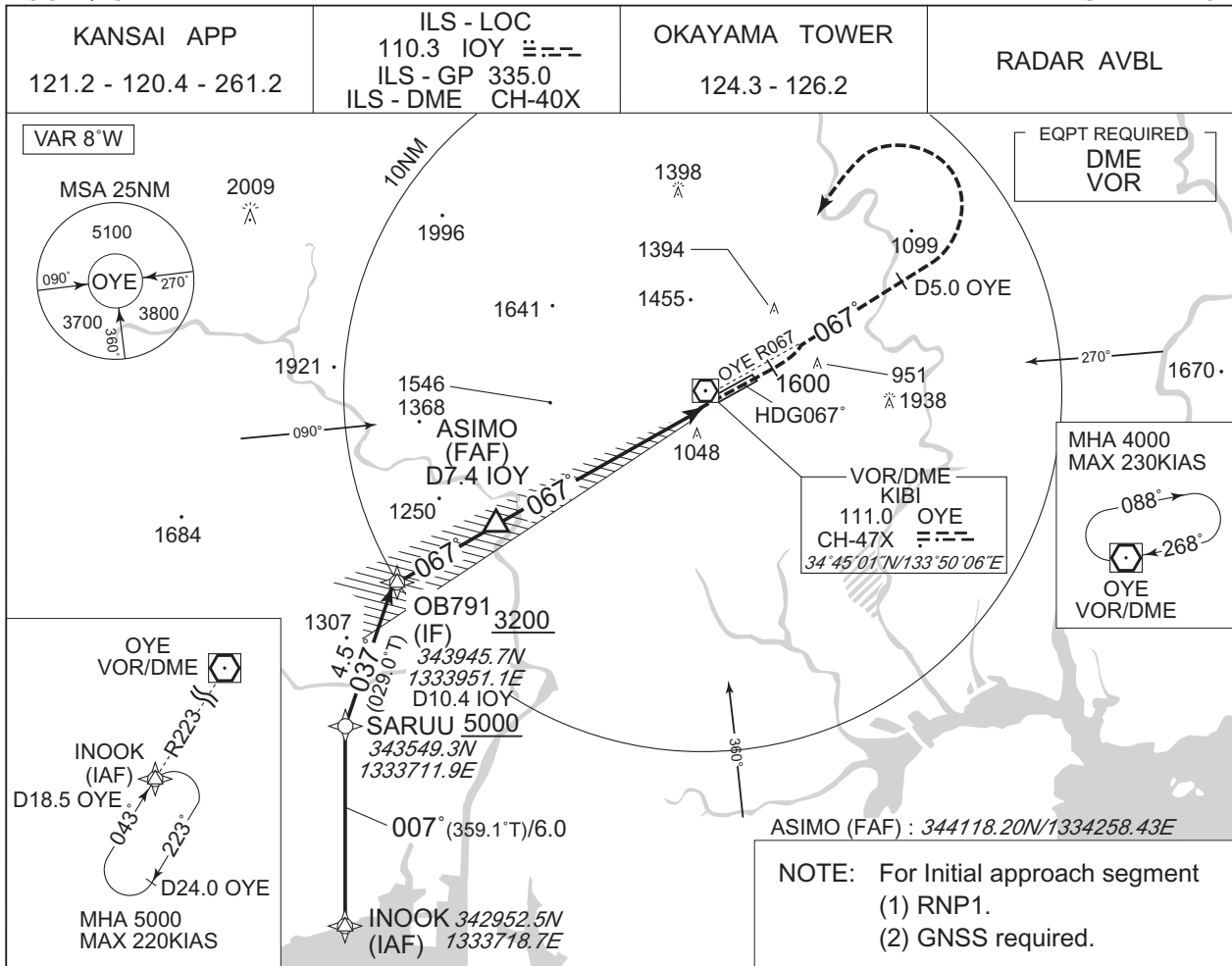
MINIMA		THR elev. 806	AD elev. 785	
CAT	CAT I		CIRCLING	
	DA(H)	RVR/CMV	MDA(H)	VIS
A	1006 (200)	550	1510 (725)	1600
B				2400
C				2400
D				3200

Circling to SOUTH side of RWY only.
MINIMA with Missed APCH climb gradient of 2.5% are not established.

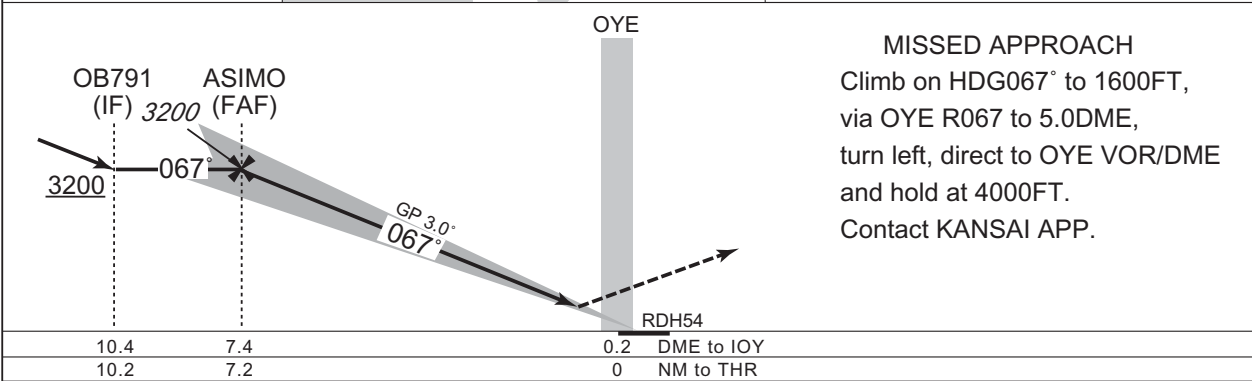
INSTRUMENT APPROACH CHART

RJOB / OKAYAMA

ILS Y RWY07



CHANGE : Navigation Specification(Basic RNP1 → RNP1).



Missed APCH climb gradient MNM 5.0%

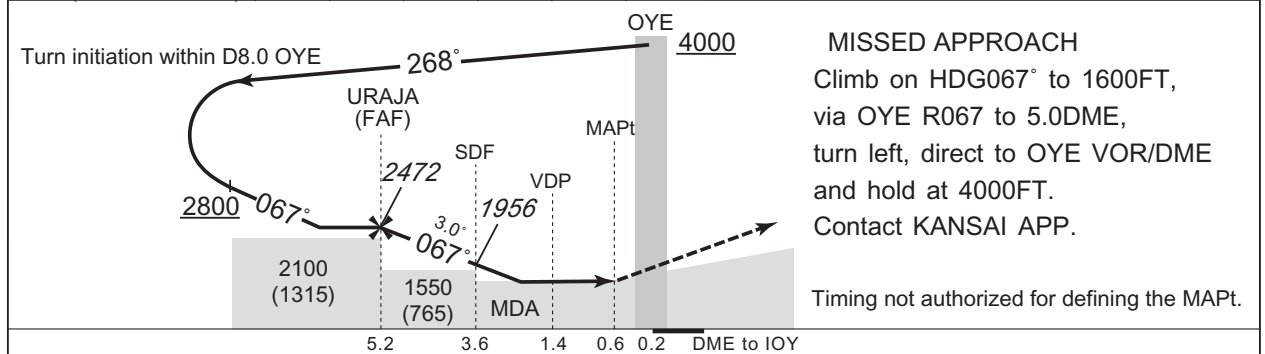
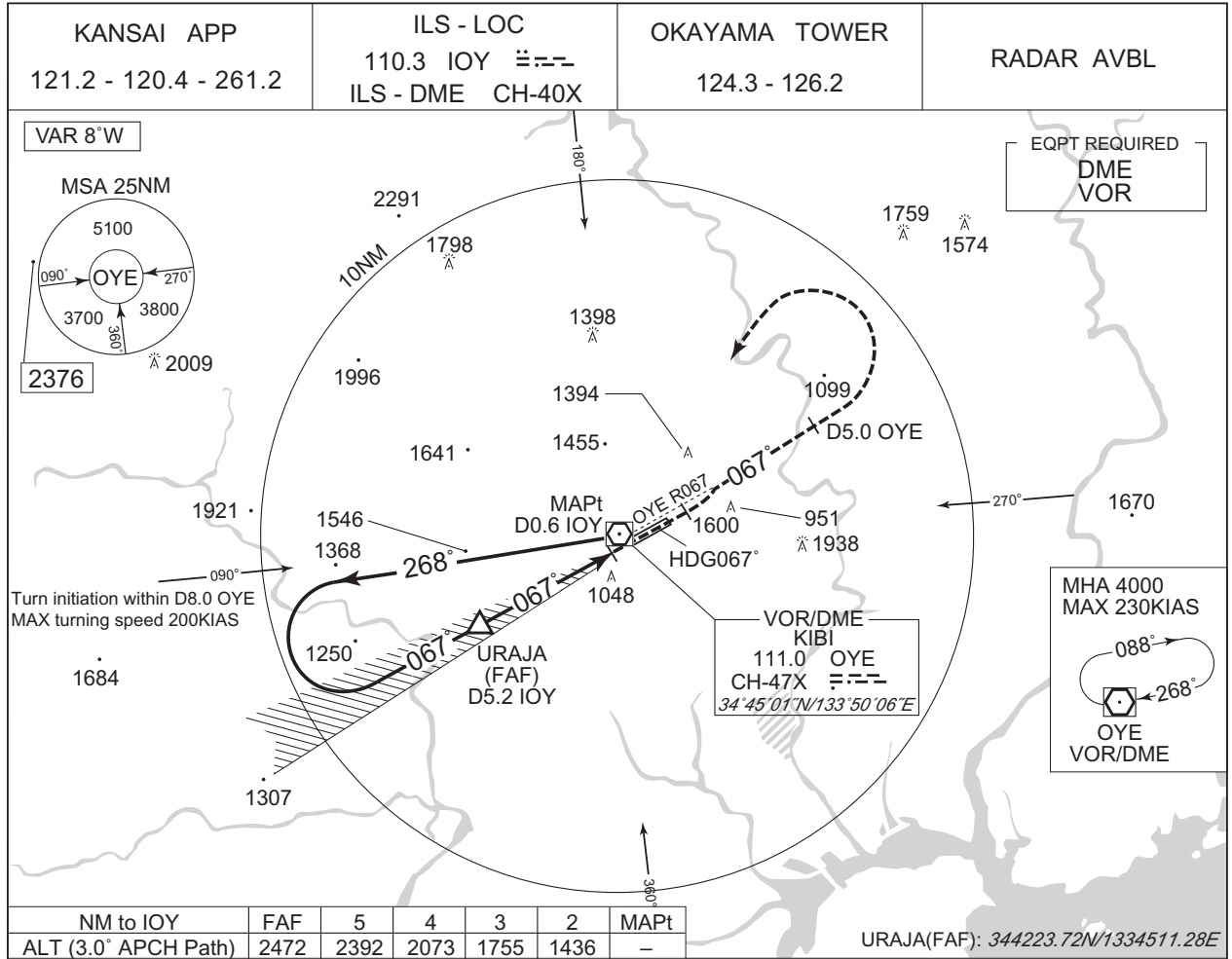
MINIMA	THR elev. 806	AD elev. 785		
CAT	CAT I		CIRCLING	
	DA(H)	RVR/CMV	MDA(H)	VIS
A	1006 (200)	550	1510 (725)	1600
B				2400
C				
D				

MINIMA with Missed APCH climb gradient of 2.5% are not established.
Circling to SOUTH side of RWY only.

INSTRUMENT APPROACH CHART

RJOB / OKAYAMA

LOC RWY07



CHANGE : Description of VAR.

Missed APCH climb gradient MNM 5.0%

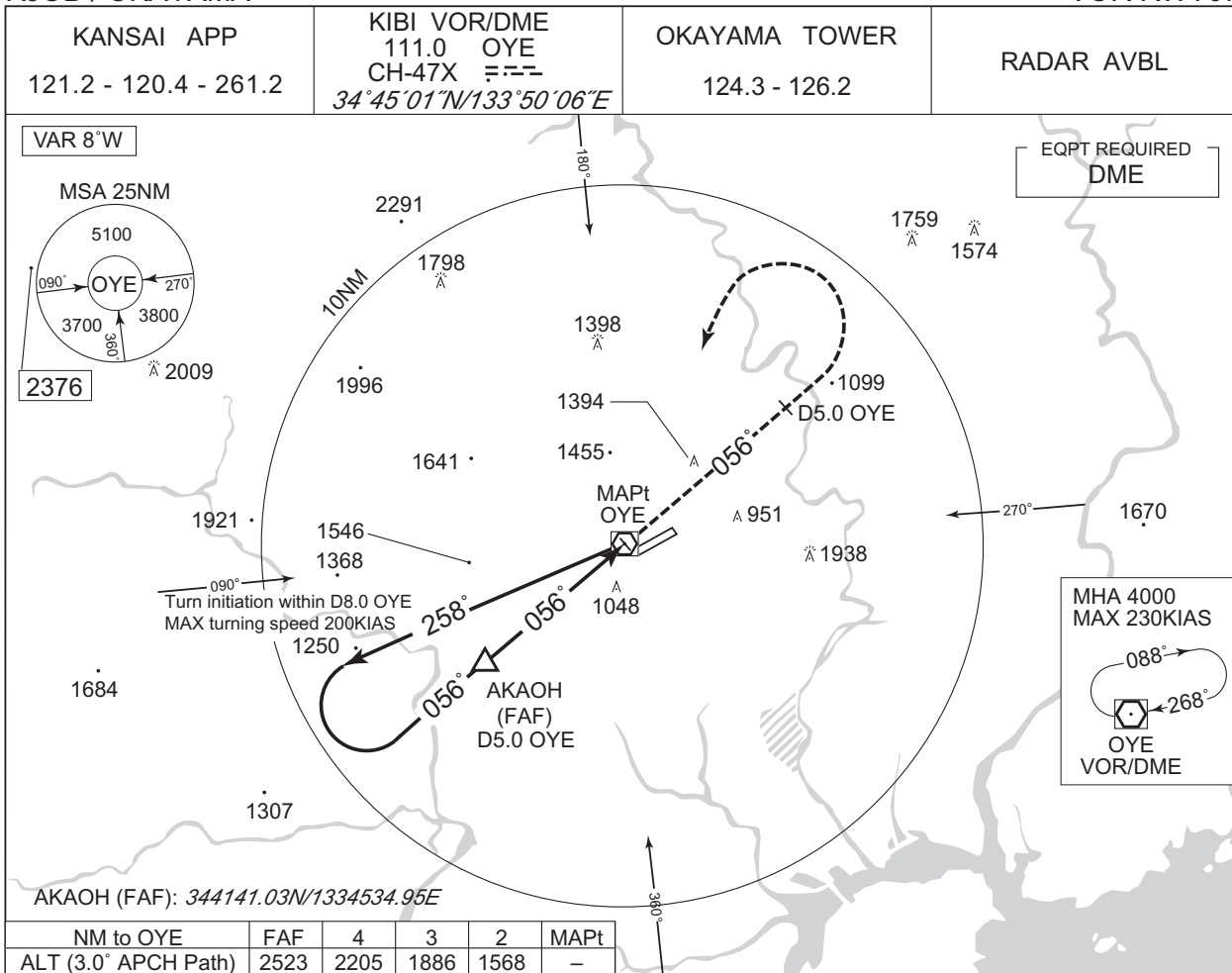
	MINIMA	THR elev. 806	AD elev. 785
CAT	MDA(H)	RVR/CMV	CIRCLING
A	1240 (455)	1000	1600
B		1510 (725)	2400
C			3200
D			1600

Circling to SOUTH side of RWY only.
MINIMA with Missed APCH climb gradient of 2.5% are not established.

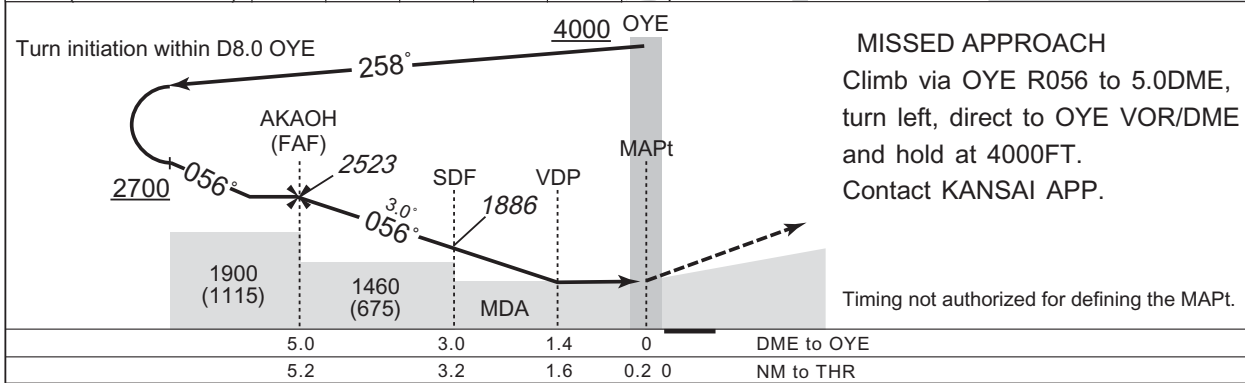
INSTRUMENT APPROACH CHART

RJOB / OKAYAMA

VOR RWY07



NM to OYE	FAF	4	3	2	MAPt
ALT (3.0° APCH Path)	2523	2205	1886	1568	-



	5.0	3.0	1.4	0	
	5.2	3.2	1.6	0.2 0	
					DME to OYE
					NM to THR

CHANGE : Description of VAR.

Missed APCH climb gradient MNM 3.0%

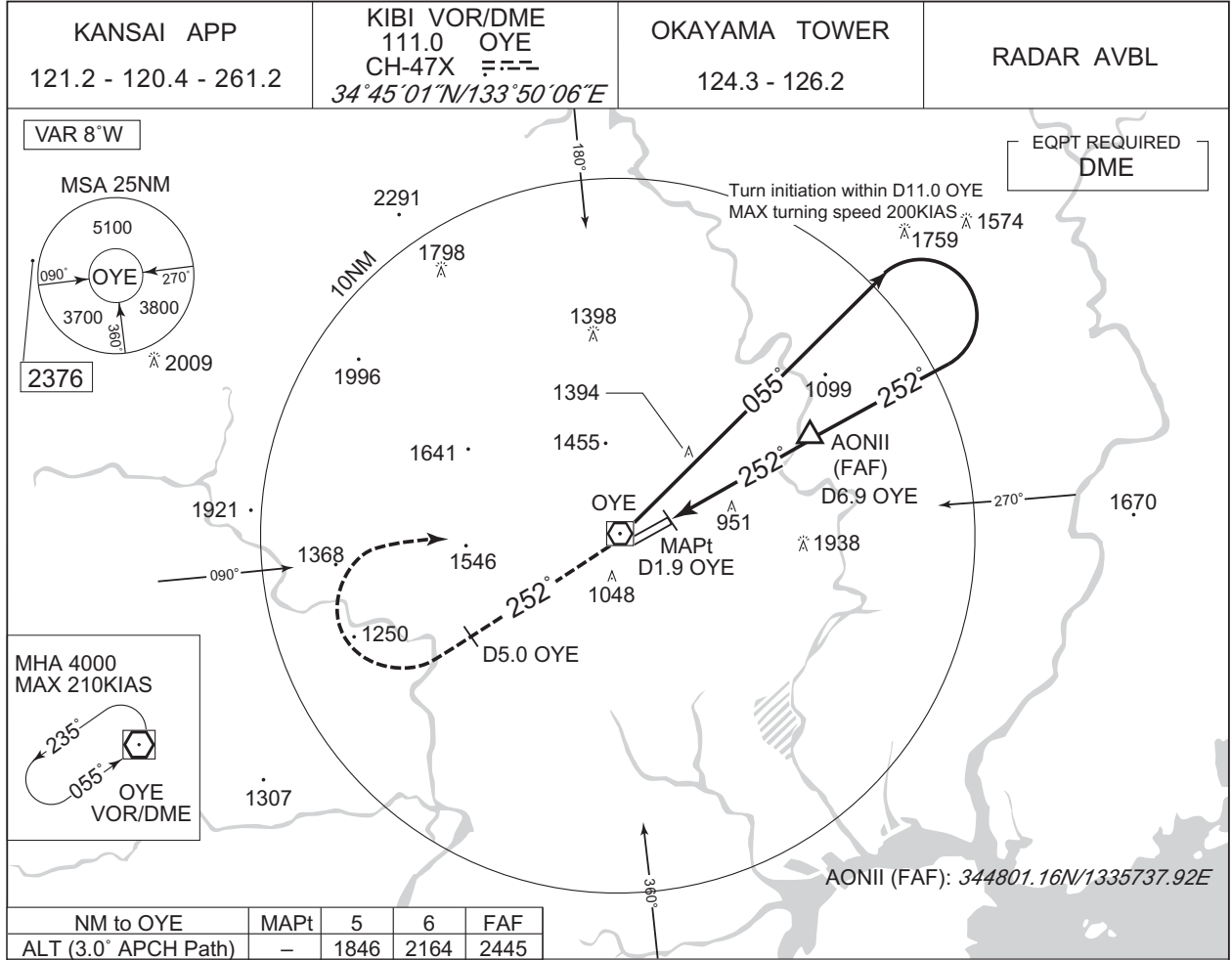
MINIMA		THR elev. 806	AD elev. 785	
CAT	CIRCLING			
	MDA(H)	RVR/CMV	MDA(H)	VIS
	A	1000	1510 (725)	1600
	B	1200		
C				
D	1600	3200		

MINIMA with Missed APCH climb gradient of 2.5% are not established.
Circling to SOUTH side of RWY only.

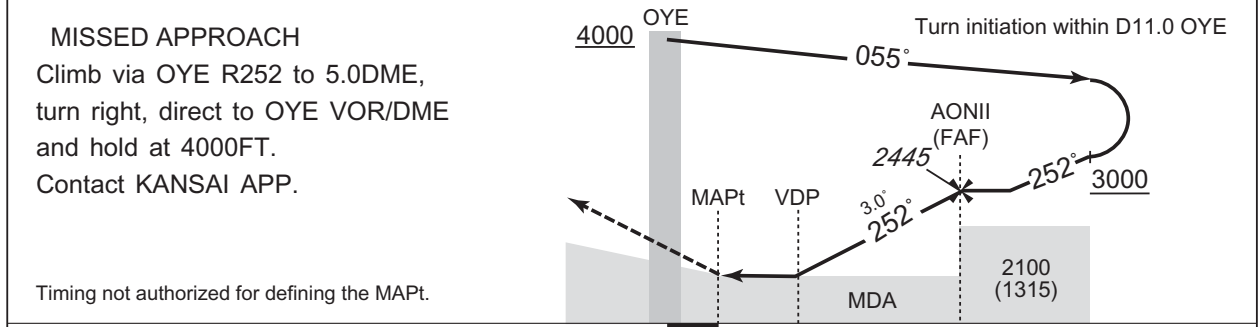
INSTRUMENT APPROACH CHART

RJOB / OKAYAMA

VOR RWY25



NM to OYE	MAPt	5	6	FAF
ALT (3.0° APCH Path)	-	1846	2164	2445



DME to OYE	1.9	4.4	6.9
NM to THR	0	2.5	5.0

CHANGE : Description of VAR.

MINIMA		THR elev. 804	AD elev. 785	
CAT			CIRCLING	
	MDA(H)	CMV	MDA(H)	VIS
A	1620 (835)	1500	1620 (835)	1600
B				2400
C		1800		3200
D		2000		

Circling to SOUTH side of RWY only.

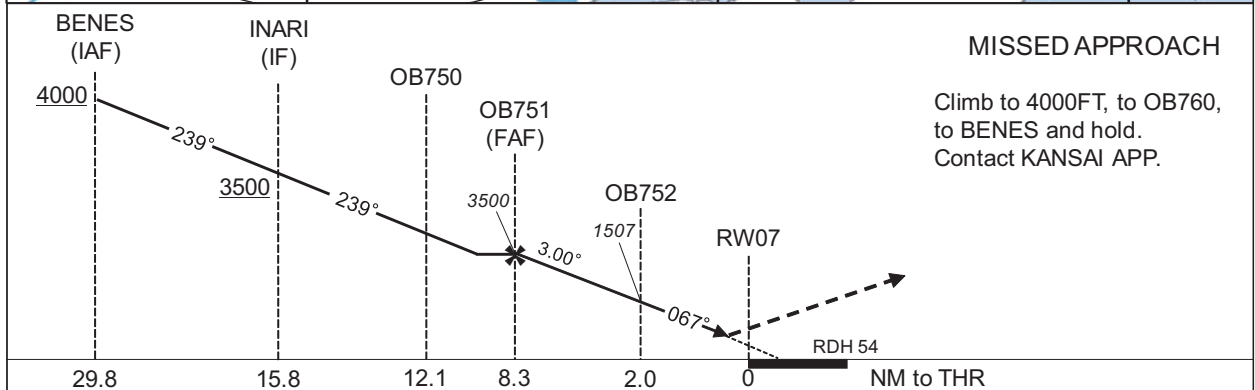
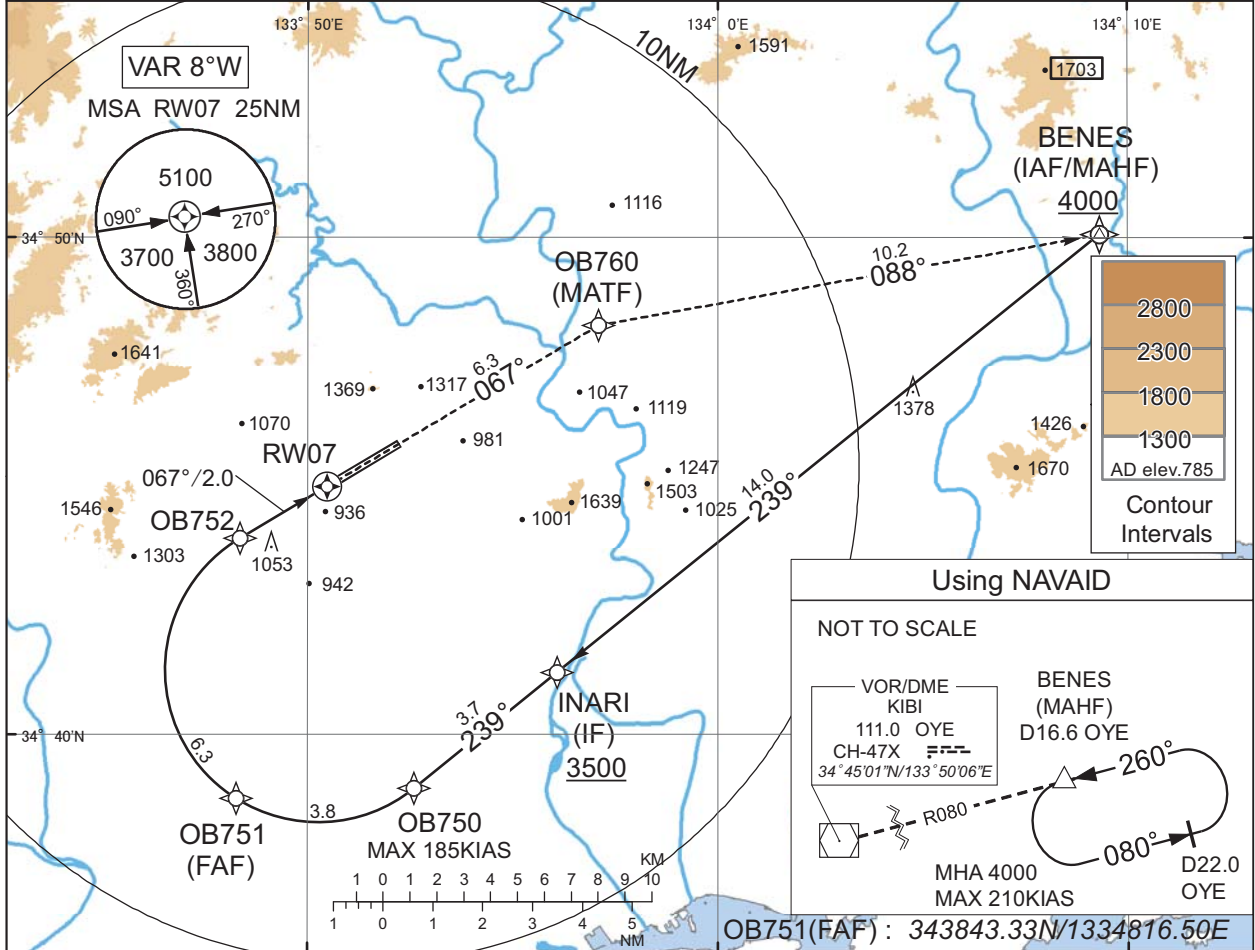
INSTRUMENT APPROACH CHART

RJOB / OKAYAMA

RNP Z RWY07(AR)

KANSAI APP 121.2 - 120.4 - 261.2	RNP AR RF required.	OKAYAMA TOWER 124.3 - 126.2	RADAR AVBL
-------------------------------------	------------------------	--------------------------------	------------

For uncompensated Baro-VNAV systems, procedure not authorized below -10°C / above 45°C



Missed APCH climb gradient MNM 4.0%

MINIMA	THR elev. 806	AD elev. 785
CAT	RNP 0.30	
	DA(H)	RVR/CMV
A	-	-
B	-	-
C	1233(427)	1000
D	-	1400

Authorization Required

MINIMA with Missed APCH climb gradient of 2.5% are not established.

CHANGE : Description of VAR.

INSTRUMENT APPROACH CHART

RJOB / OKAYAMA

RNP Z RWY07(AR)

Coding Table

Serial Number	Path Descriptor	Waypoint Identifier	Fly Over	Course °M(°T)	Magnetic Variation	Distance (NM)	Turn Direction	Altitude (FT)	Speed (KIAS)	VPA/RDH (°/FT)	RNP Value
001	IF	BENES	-	-	-8.1	-	-	+4000	-	-	-
002	TF	INARI	-	239 (231.0)	-8.1	14.0	-	+3500	-	-	1.0
003	TF	OB750	-	239 (230.9)	-8.1	3.7	-	-	-185	-	1.0
004	RF Center: OBRF1 r=3.07NM	OB751	-	-	-8.1	3.8	R	3500	-	-	1.0
005	RF Center: OBRF1 r=3.07NM	OB752	-	-	-8.1	6.3	R	1507	-	-3.00	0.3
006	TF	RW07	Y	067 (059.1)	-8.1	2.0	-	860	-	-3.00/54	0.3
007	TF	OB760	-	067 (059.1)	-8.1	6.3	-	-	-	-	1.0
008	TF	BENES	-	088 (079.6)	-8.1	10.2	-	4000	-	-	1.0

Waypoint Coordinates

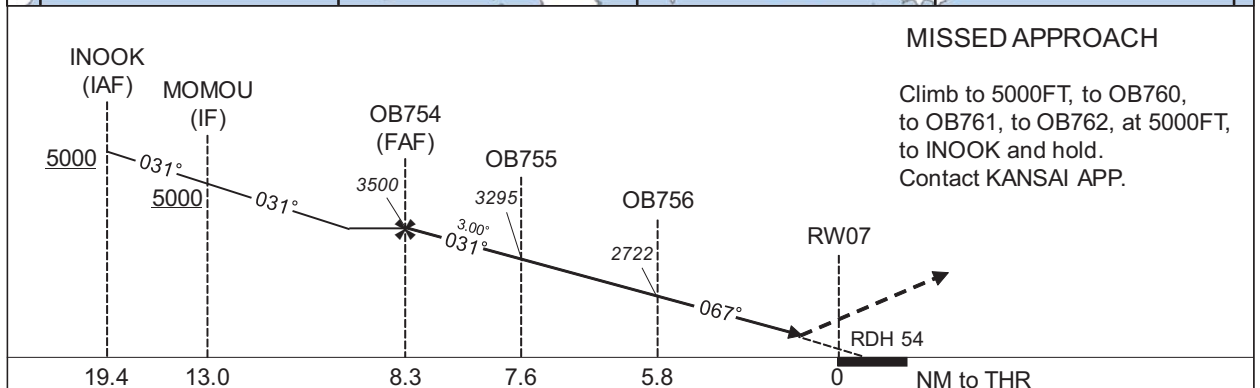
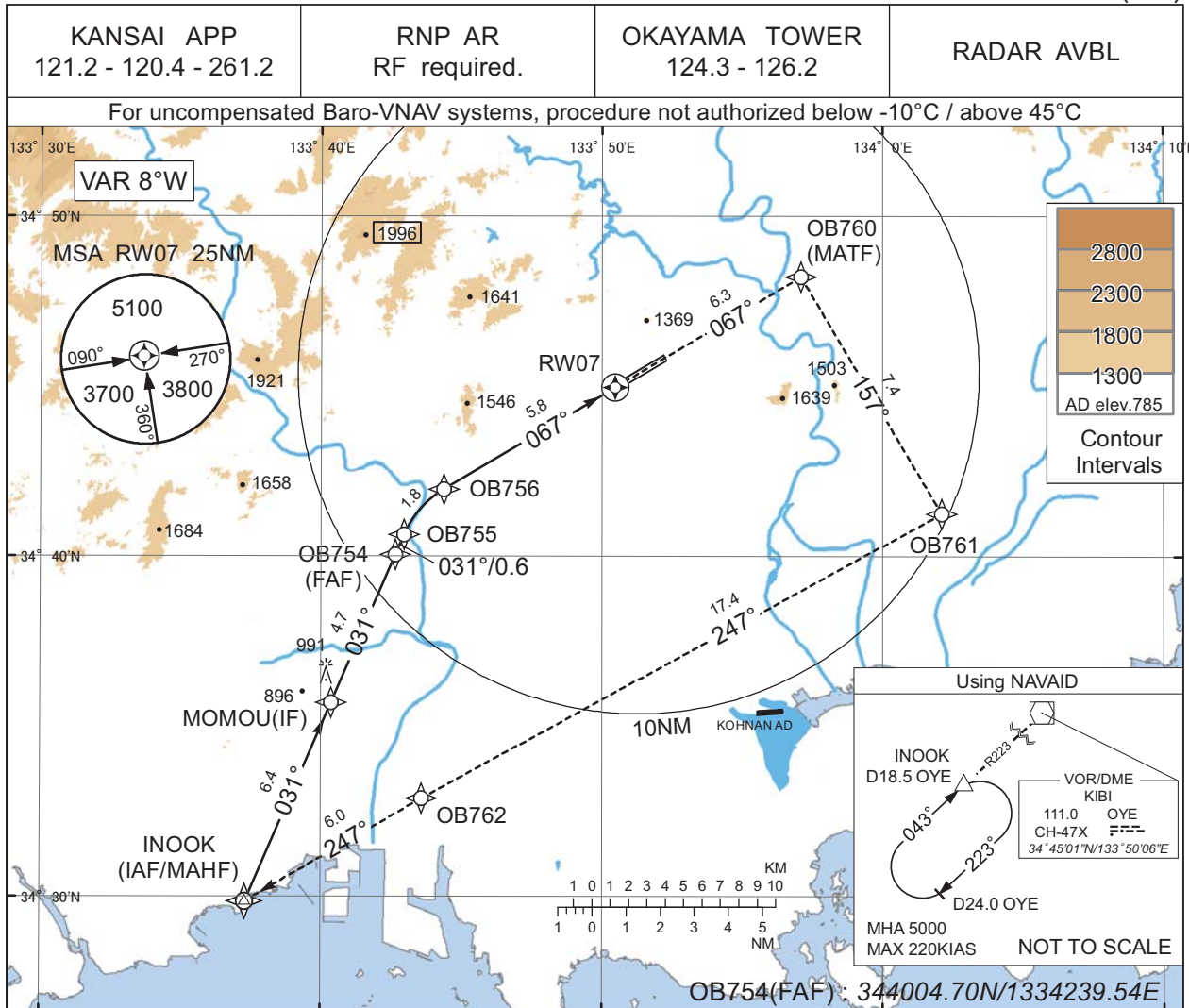
Waypoint Identifier	Coordinates	RF Arc Center Identifier	Coordinates
INARI	344115.72N / 1335605.70E	OBRF1	344119.08N / 1335015.95E
OB750	343855.80N / 1335236.42E		
OB751	343843.33N / 1334816.50E		
OB752	344357.48N / 1334821.64E		
RW07	344500.07N / 1335028.89E		
OB760	344814.99N / 1335705.97E		
BENES	345004.35N / 1340919.47E		

CHANGE : PROC renamed.

INSTRUMENT APPROACH CHART

RJOB / OKAYAMA

RNP Y RWY07(AR)



CHANGE : Description of VAR.

Missed APCH climb gradient MNM 4.0%

MINIMA	THR elev. 806	AD elev. 785
CAT	RNP 0.30	
	DA(H)	RVR/CMV
A	-	-
B	-	-
C	1233(427)	1000
D		1400

MINIMA with Missed APCH Climb gradient of 2.5% are not established.

Authorization Required

INSTRUMENT APPROACH CHART

RJOB / OKAYAMA

RNP Y RWY07(AR)

Coding Table

Serial Number	Path Descriptor	Waypoint Identifier	Fly Over	Course °M(°T)	Magnetic Variation	Distance (NM)	Turn Direction	Altitude (FT)	Speed (KIAS)	VPA/RDH (°/FT)	RNP Value
001	IF	INOOK	-	-	-8.1	-	-	+5000	-	-	-
002	TF	MOMOU	-	031 (023.3)	-8.1	6.4	-	+5000	-	-	0.3
003	TF	OB754	-	031 (023.3)	-8.1	4.7	-	3500	-	-	0.3
004	TF	OB755	-	031 (023.4)	-8.1	0.6	-	3295	-	-3.00	0.3
005	RF Center: OBRF2 r=2.89NM	OB756	-	-	-8.1	1.8	R	2722	-	-3.00	0.3
006	TF	RW07	Y	067 (059.0)	-8.1	5.8	-	860	-	-3.00/54	0.3
007	TF	OB760	-	067 (059.1)	-8.1	6.3	-	-	-	-	1.0
008	TF	OB761	-	157 (149.4)	-8.1	7.4	-	-	-	-	1.0
009	TF	OB762	-	247 (239.2)	-8.1	17.4	-	5000	-	-	1.0
010	TF	INOOK	-	247 (239.0)	-8.1	6.0	-	5000	-	-	1.0

Waypoint Coordinates

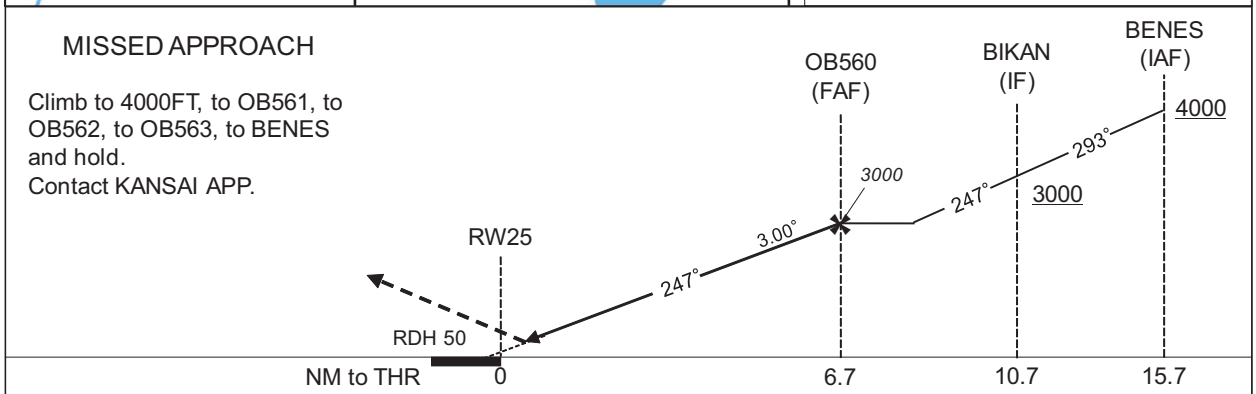
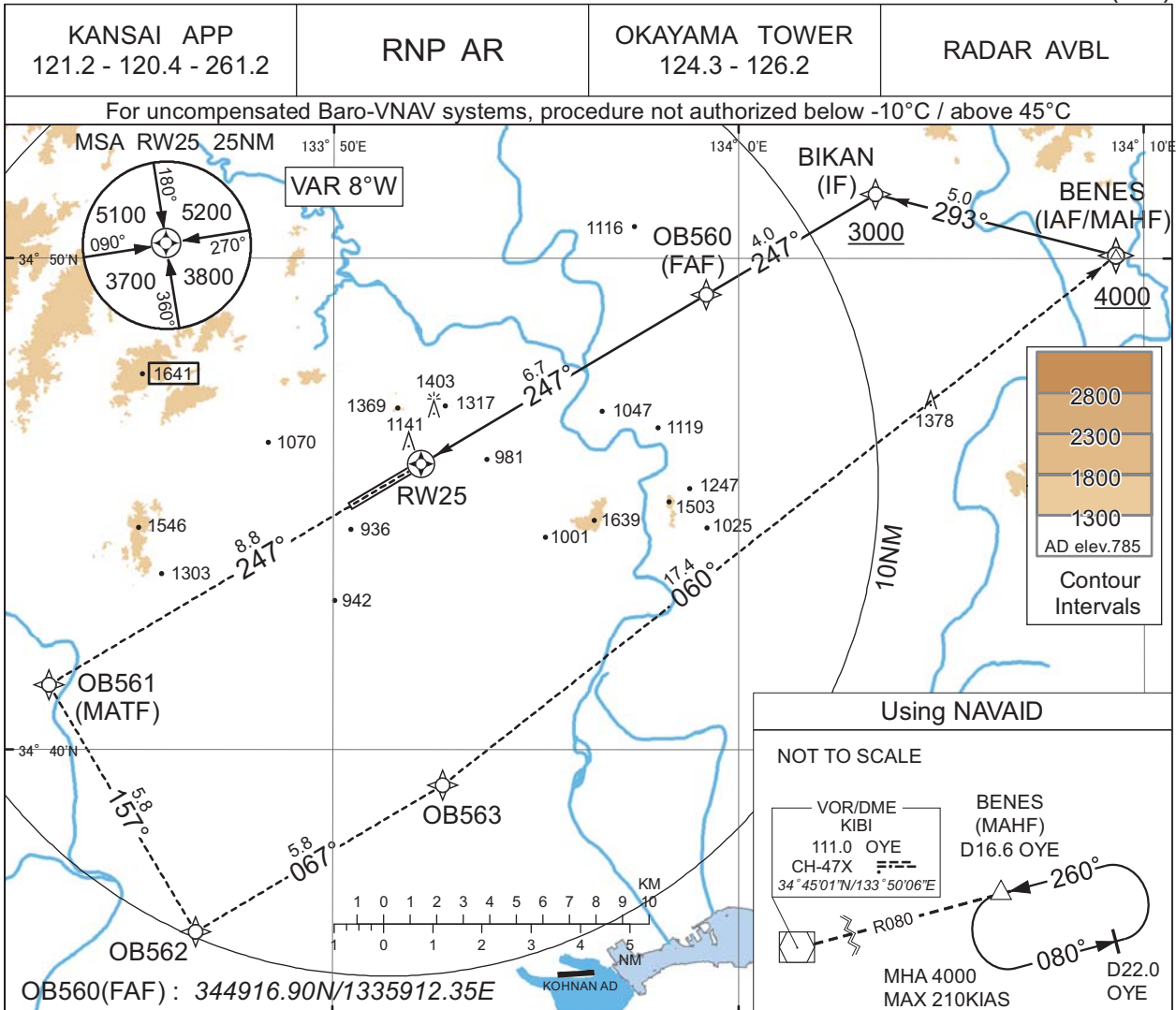
Waypoint Identifier	Coordinates	RF Arc Center Identifier	Coordinates
INOOK	342952.48N / 1333718.65E	OBRF2	343930.88N / 1334610.90E
MOMOU	343543.45N / 1334022.43E		
OB754	344004.70N / 1334239.54E		
OB755	344040.07N / 1334258.12E		
OB756	344200.00N / 1334423.17E		
RW07	344500.07N / 1335028.89E		
OB760	344814.99N / 1335705.97E		
OB761	344152.88N / 1340140.81E		
OB762	343257.58N / 1334332.75E		

CHANGE : PROC renamed.

INSTRUMENT APPROACH CHART

RJOB / OKAYAMA

RNP Z RWY25(AR)



Missed APCH climb gradient MNM 5.0% for RNP 0.10

MINIMA	THR elev. 804		AD elev. 785	
CAT	RNP 0.10		RNP 0.30	
	DA(H)	CMV	DA(H)	CMV
A	-	-	-	-
B	-	-	-	-
C	-	1600	-	1800
D	1276(472)	1800	1564(760)	2000

MINIMA with Missed APCH climb gradient of 2.5% are not established for RNP 0.10.

Authorization Required

CHANGE : Description of VAR.

INSTRUMENT APPROACH CHART

RJOB / OKAYAMA

RNP Z RWY25(AR)

Coding Table

Serial Number	Path Descriptor	Waypoint Identifier	Fly Over	Course °M(°T)	Magnetic Variation	Distance (NM)	Turn Direction	Altitude (FT)	Speed (KIAS)	VPA/RDH (°/FT)	RNP Value
001	IF	BENES	-	-	-8.1	-	-	+4000	-	-	-
002	TF	BIKAN	-	293 (284.5)	-8.1	5.0	-	+3000	-	-	1.0
003	TF	OB560	-	247 (239.2)	-8.1	4.0	-	3000	-	-	1.0
004	TF	RW25	Y	247 (239.1)	-8.1	6.7	-	854	-	-3.00/50	0.10 0.30
005	TF	OB561	-	247 (239.1)	-8.1	8.8	-	-	-	-	1.0
006	TF	OB562	-	157 (149.3)	-8.1	5.8	-	-	-	-	1.0
007	TF	OB563	-	067 (059.1)	-8.1	5.8	-	-	-	-	1.0
008	TF	BENES	-	060 (051.6)	-8.1	17.4	-	4000	-	-	1.0

Waypoint Coordinates

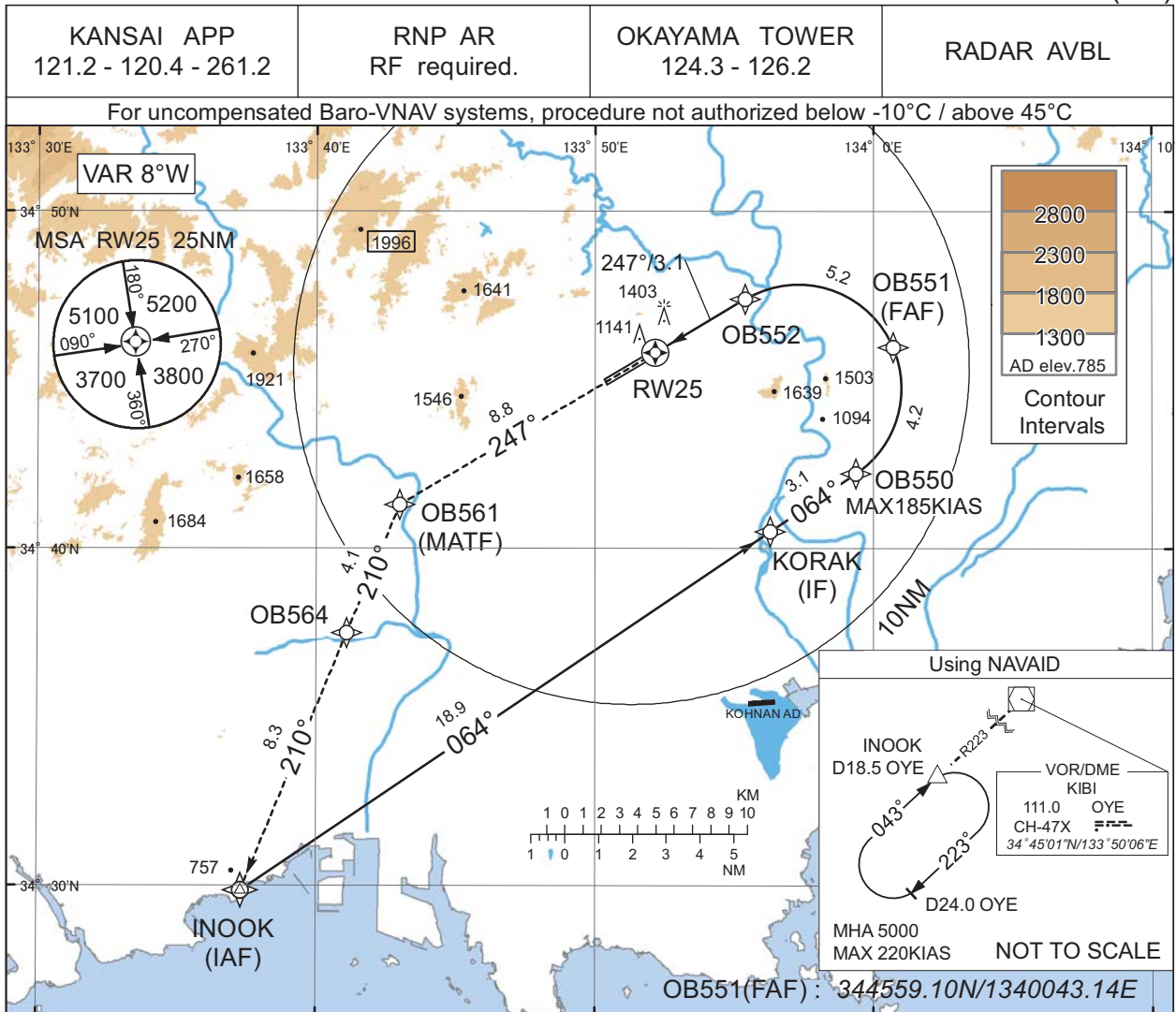
Waypoint Identifier	Coordinates	RF Arc Center Identifier	Coordinates
BIKAN	345119.60N / 1340323.18E	—	—
OB560	344916.90N / 1335912.35E		
RW25	344549.88N / 1335210.24E		
OB561	344119.10N / 1334300.25E		
OB562	343617.70N / 1334637.94E		
OB563	343917.37N / 1335242.76E		
BENES	345004.35N / 1340919.47E		

CHANGE : PROC renamed.

INSTRUMENT APPROACH CHART

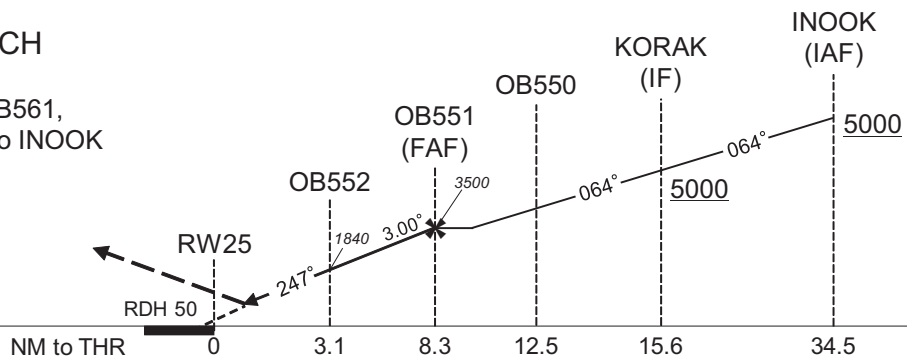
RJOB / OKAYAMA

RNP Y RWY25(AR)



MISSED APPROACH

Climb to 5000FT, to OB561, to OB564 at 5000FT, to INOOK and hold.
Contact KANSAI APP.



Missed APCH climb gradient MNM 5.0% for RNP 0.10

CAT	THR elev. 804		AD elev. 785	
	RNP 0.10		RNP 0.30	
	DA(H)	CMV	DA(H)	CMV
A	-	-	-	-
B	-	-	-	-
C	1276(472)	1600	1564(760)	1800
D	-	1800	-	2000

MINIMA with Missed APCH climb gradient of 2.5% are not established for RNP 0.10.

Authorization Required

CHANGE : Description of VAR.

INSTRUMENT APPROACH CHART

RJOB / OKAYAMA

RNP Y RWY25(AR)

Coding Table

Serial Number	Path Descriptor	Waypoint Identifier	Fly Over	Course °M(°T)	Magnetic Variation	Distance (NM)	Turn Direction	Altitude (FT)	Speed (KIAS)	VPA/RDH (°/FT)	RNP Value
001	IF	INOOK	-	-	-8.1	-	-	+5000	-	-	-
002	TF	KORAK	-	064 (055.7)	-8.1	18.9	-	+5000	-	-	1.0
003	TF	OB550	-	064 (055.8)	-8.1	3.1	-	-	-185	-	1.0
004	RF Center: OBRF3 r=3.06NM	OB551	-	-	-8.1	4.2	L	3500	-	-	1.0
005	RF Center: OBRF3 r=3.06NM	OB552	-	-	-8.1	5.2	L	1840	-	-3.00	0.10 0.30
006	TF	RW25	Y	247 (239.2)	-8.1	3.1	-	854	-	-3.00/50	0.10 0.30
007	TF	OB561	-	247 (239.1)	-8.1	8.8	-	-	-	-	1.0
008	TF	OB564	-	210 (202.3)	-8.1	4.1	-	5000	-	-	1.0
009	TF	INOOK	-	210 (202.3)	-8.1	8.3	-	5000	-	-	1.0

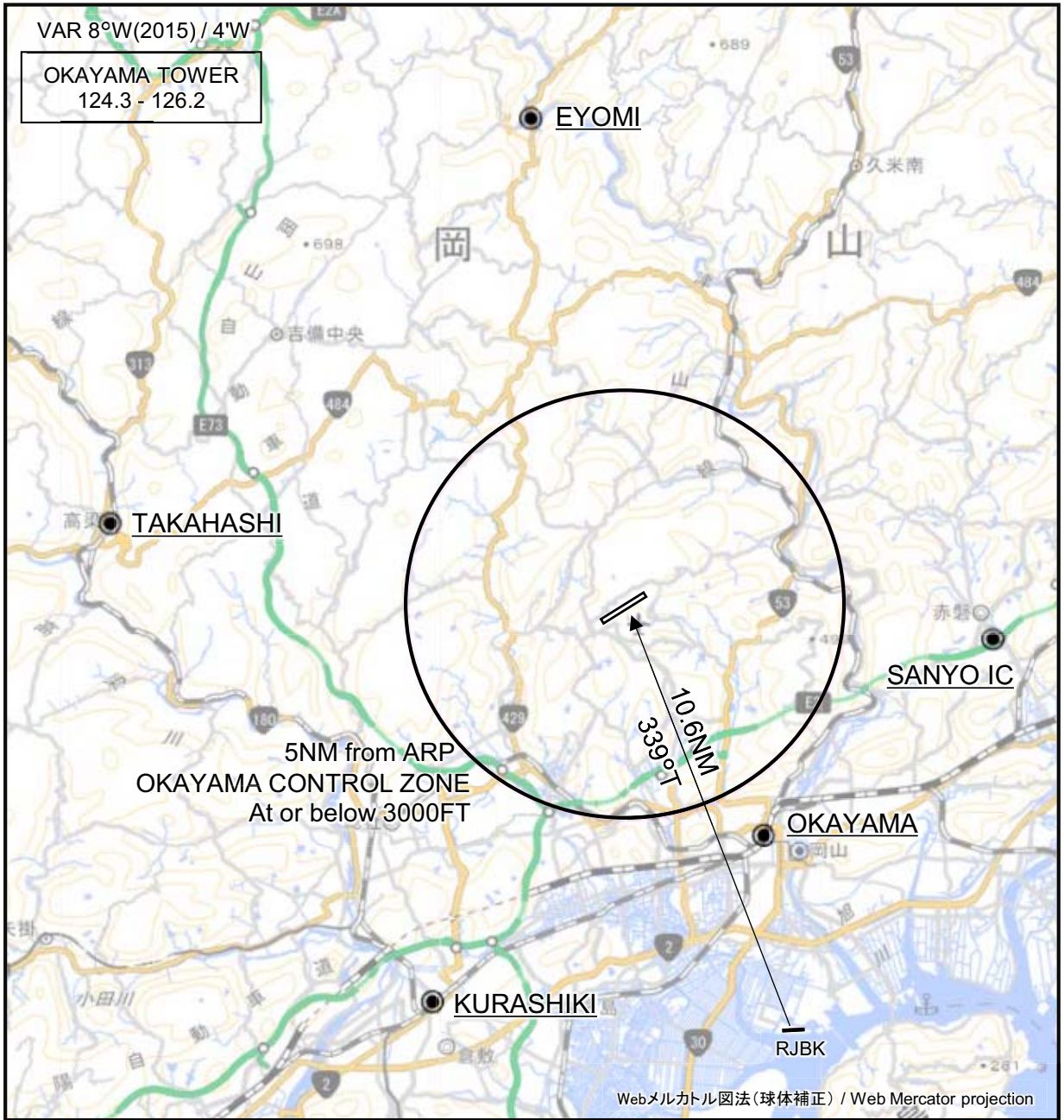
Waypoint Coordinates

Waypoint Identifier	Coordinates	RF Arc Center Identifier	Coordinates
INOOK	342952.48N / 1333718.65E	OBRF3	344446.88N / 1335718.07E
KORAK	344031.39N / 1335618.17E		
OB550	344214.38N / 1335922.79E		
OB551	344559.10N / 1340043.14E		
OB552	344725.06N / 1335524.13E		
RW25	344549.88N / 1335210.24E		
OB561	344119.10N / 1334300.25E		
OB564	343730.82N / 1334106.50E		

CHANGE : PROC renamed.

RJOB / OKAYAMA

Visual REP

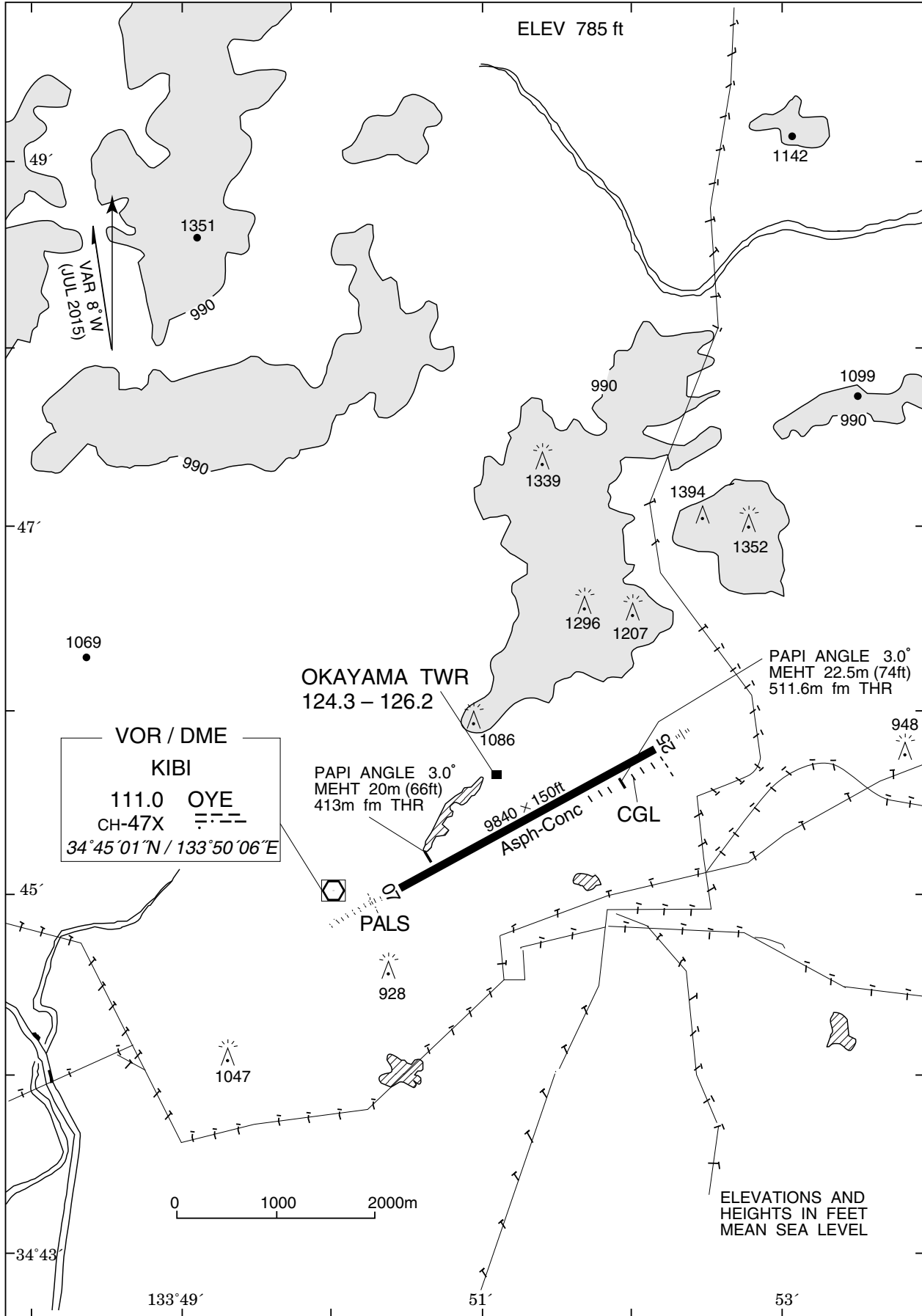


CHANGE : Map updated. BRG/DIST from ARP. Location indicator of Kohnan AD added.

※図中に標高を示す数字がある場合、単位はメートル(m)である。The unit of measurement used to express elevation is meter(m).

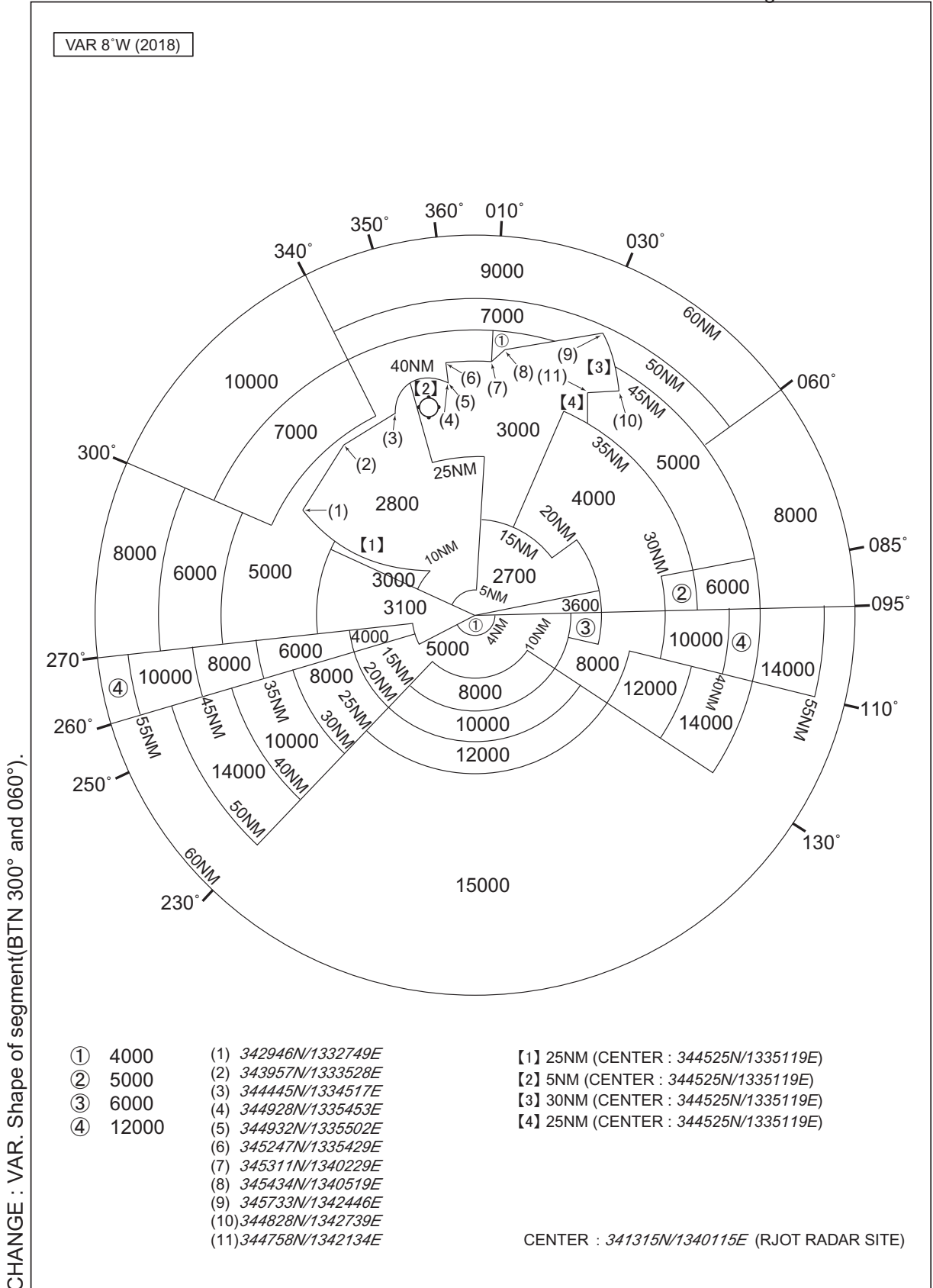
Call sign	BRG / DIST from ARP	Remarks
江与味 Eyomi	349°T / 11.6NM	江与味橋 Bridge
高梁 Takahashi	279°T / 12.0NM	JR駅 JR Station
倉敷 Kurashiki	205°T / 10.3NM	JR駅 JR Station
岡山 Okayama	150°T / 6.2NM	JR駅 JR Station
山陽IC Sanyo IC	096°T / 8.4NM	山陽インターチェンジ Sanyo Highway Interchange

RJOB / OKAYAMA LDG CHART



RJOB / OKAYAMA

Minimum Vectoring Altitude CHART



INTENTIONALLY LEFT BLANK