

AD 2 AERODROMES

RJOB AD 2.1 AERODROME LOCATION INDICATOR AND NAME

RJOB - OKAYAMA

RJOB AD 2.2 AERODROME GEOGRAPHICAL AND ADMINISTRATIVE DATA

| | | |
|---|--|--|
| 1 | ARP coordinates and site at AD | 344525N/1335119E 059°/1.5km FM RWY 07 THR |
| 2 | Direction and distance from (city) | 11.5km(6.2nm) NW of Okayama Station (Japan Railway) |
| 3 | Elevation/ Reference temperature | 785ft / 32°C(2017-2022) |
| 4 | Geoid undulation at AD ELEV PSN | 117ft |
| 5 | MAG VAR/ Annual change | 8°W(2015) / 4°W |
| 6 | AD Administration, address, telephone, telefax, telex, AFS, e-mail and/or Web-site addresses | Okayama Pref Public AP. 1277 Nichiouji, Kita-ku, Okayama-shi, Okayama Pref. Tel : 086-294-5550 Fax : 086-294-4178 E-mail : kukokanri@pref.okayama.lg.jp Web site : http://www.pref.okayama.jp/doboku/kukokanri/kukokanri.htm |
| 7 | Types of traffic permitted (IFR/ VFR) | IFR/VFR |
| 8 | Remarks | Okayama airport branch 1277 Nichiouji, Kita-ku, Okayama-shi, Okayama Pref. Tel : 086-294-2326 Fax : 086-294-4351 |

RJOB AD 2.3 OPERATIONAL HOURS

| | | |
|----|---------------------------|--|
| 1 | AD Administration | 2200 - 1300 |
| 2 | Customs and immigration | Customs: 2230-1230 Immigration: INTL SKED FLT hours only |
| 3 | Health and sanitation | Quarantine(human): 2330-1230 Quarantine(animal): 2330-0800 Quarantine(plant): INTL SKED FLT hours only |
| 4 | AIS Briefing Office | Nil |
| 5 | ATS Reporting Office(ARO) | Nil |
| 6 | MET Briefing Office | H24 (KANSAI) |
| 7 | ATS | 2200 - 1300 |
| 8 | Fuelling | 2100 - 1100 |
| 9 | Handling | Nil |
| 10 | Security | Nil |
| 11 | De-icing | Nil |
| 12 | Remarks | Nil |

RJOB AD 2.4 HANDLING SERVICES AND FACILITIES

| | | |
|---|---|---|
| 1 | Cargo-handling facilities | AVBL up to B747-400 aircraft |
| 2 | Fuel/ oil types | JET A-1 |
| 3 | Fuelling facilities/ capacity | Fuel truck refueling |
| 4 | De-icing facilities | Nil |
| 5 | Hangar space for visiting aircraft | Nil |
| 6 | Repair facilities for visiting aircraft | Nil |
| 7 | Remarks | Fueling spot 1, 1A, 1B, 2, 3, 5, 5B, 6, 6B, 7, 7B, 8 only |

RJOB AD 2.5 PASSENGER FACILITIES

| | | |
|---|----------------------|----------------------------|
| 1 | Hotels | Nil |
| 2 | Restaurants | At airport, not continuous |
| 3 | Transportation | Busses and Taxis |
| 4 | Medical facilities | In Okayama city |
| 5 | Bank and Post Office | Nil |
| 6 | Tourist Office | Nil |
| 7 | Remarks | Nil |

RJOB AD 2.6 RESCUE AND FIRE FIGHTING SERVICES

| | | |
|---|---|--|
| 1 | AD category for fire fighting | CAT 9 |
| 2 | Rescue equipment | Fire fighting truck x 3, Pumper truck x 1, Medical truck x 1 |
| 3 | Capability for removal of disabled aircraft | Nil |
| 4 | Remarks | Nil |

RJOB AD 2.7 SEASONAL AVAILABILITY-CLEARING

| | | |
|---|-----------------------------|---|
| 1 | Types of clearing equipment | Antifreezing agent spreader x 2, Motor grader x 2, Tractor shovel x 2 |
| 2 | Clearance priorities | Nil |
| 3 | Remarks | Seasonal availability : mid DEC - mid MAR |

RJOB AD 2.8 APRONS, TAXIWAYS AND CHECK LOCATIONS DATA

| | | |
|---|-------------------------------------|--|
| 1 | Apron surface and strength | Spot 1-8 Surface : Cement-concrete, Strength : PCN 62/R/B/X/T Spot11-15 Surface : Asphalt-concrete, Strength : AUW 5700kg/0.28Mpa Spot21 Surface : Asphalt-concrete, Strength : PCN 12/F/B/X/T |
| 2 | Taxiway width, surface and strength | T1,T7 Width : 26.5m, Surface : Asphalt-concrete, PCN 63/F/B/X/T T2,T3,T5,T6 Width : 30m, Surface : Asphalt-concrete, PCN 58/F/A/X/T T4 Width : 30m, Surface : Asphalt-concrete,PCN 63/F/B/X/T P1,P3,P4,P5,P6 Width : 23m, Surface : Asphalt-concrete, PCN 63/F/B/X/T P2 Width : 23m, Surface : Asphalt-concrete, PCN 58/F/A/X/T |
| 3 | ACL and elevation | Not available |
| 4 | VOR checkpoints | Not available |
| 5 | INS checkpoints | Spot NR 1 : 344533.14N/1335108.77E 1A : 344532.89N/1335108.12E 1B : 344533.56N/1335109.49E 2 : 344534.22N/1335111.30E 3 : 344535.54N/1335113.66E 5 : 344536.66N/1335115.93E 5B : 344536.45N/1335116.47E 6 : 344537.56N/1335117.63E 6B : 344537.89N/1335118.31E 7 : 344538.21N/1335118.96E 7B : 344538.56N/1335119.69E 8 : 344538.88N/1335120.33E |
| 6 | Remarks | Nil |

RJOB AD 2.9 SURFACE MOVEMENT GUIDANCE AND CONTROL SYSTEM AND MARKINGS

| | | |
|---|--|--|
| 1 | Use of aircraft stand ID signs, TWY guide lines and Visual docking/ parking guidance system of aircraft stands | Nil |
| 2 | RWY and TWY markings and LGT | RWY:RWY07/25 (Marking) RWY designation, RWY CL, RWY THR, Aiming point, TDZ, RWY side stripe (LGT) RCLL, REDL, RTHL, RENL, WBAR(RWY07), RTZL(RWY07) TWY: (Marking) TWY CL, TWY side stripe, RWY HLDG PSN, Mandatory instruction (LGT) TWY edge LGT, TWY CL LGT, RWY guard LGT(T1-T7), Taxiing guidance sign(T1-T7) |
| 3 | Stop bars | Nil |
| 4 | Remarks | (Marking) Overrun area (LGT) Apron flood LGT |

RJOB AD 2.10 AERODROME OBSTACLES

■ In Area2 See Obstacle data

■ In Area3 To be developed

RJOB AD 2.11 METEOROLOGICAL INFORMATION PROVIDED

| | | |
|----|---|---|
| 1 | Associated MET Office | KANSAI |
| 2 | Hours of service MET Office outside hours | H24 (KANSAI) |
| 3 | Office responsible for TAF preparation Periods of validity | KANSAI 30 Hours |
| 4 | Trend forecast Interval of issuance | Nil |
| 5 | Briefing/ consultation provided | Briefing is available upon inquiry at KANSAI |
| 6 | Flight documentation Language(s) used | C En |
| 7 | Charts and other information available for briefing or consultation | S ₆ , U ₈₅ , U ₇ , U ₅ , U ₃ , U ₂₅ , U ₂ /T _r , P _S , P ₅ , P ₃ , P ₂₅ , P _{SWE} , P _{SWF} , P _{SWG} , P _{SWI} , P _{SWM} , P _{SW} (domestic), E, C, W _E , W _F , W _G , W _I , W, N |
| 8 | Supplementary equipment available for providing information | Nil |
| 9 | ATS units provided with information | TWR |
| 10 | Additional information(limitation of service, etc.) | Nil |

RJOB AD 2.12 RUNWAY PHYSICAL CHARACTERISTICS

| Designations RWY NR | TRUE BRG | Dimensions of RWY(M) | Strength(PCN) and surface of RWY | THR coordinates THR geoid undulation | THR elevation and highest elevation of TDZ of precision APP RWY |
|--|------------------------|-------------------------|-------------------------------------|---|---|
| 1 | 2 | 3 | 4 | 5 | 6 |
| 07 | 059.23° | 3000x45 | PCN 63/F/B/X/T Asphalt-Concrete | 344500.07N 1335028.89E 117.1ft | THR ELEV : 806ft TDZ : 805.9ft |
| 25 | 239.23° | 3000x45 | PCN 63/F/B/X/T Asphalt-Concrete | 344549.88N 1335210.24E 117.3ft | THR ELEV : 804ft |
| Slope of RWY | Strip Dimensions(M) | | RESA (Overrun) Dimensions (M) | | Remarks |
| 7 | 10 | | 11 | | 14 |
| See AD2.24 AD chart | 3120x300 3120x300 | | 190x(MNM:160 MAX:300)* 40x280 | | RWY Grooving:3000x30m |
| *For detail, ask airport administrator | | | | | |

RJOB AD 2.13 DECLARED DISTANCES

| RWY Designator | TORA (m) | TODA (m) | ASDA (m) | LDA (m) | Remarks |
|----------------|-------------|-------------|-------------|------------|---------|
| 1 | 2 | 3 | 4 | 5 | 6 |
| 07 | 3000 | 3000 | 3000 | 3000 | Nil |
| TWY:T2 | 2500 | 2500 | 2500 | | |
| TWY:T3 | 2000 | 2000 | 2000 | | |
| TWY:T4 | 1500 | 1500 | 1500 | | |
| 25 | 3000 | 3000 | 3000 | 3000 | Nil |
| TWY:T6 | 2489 | 2489 | 2489 | | |
| TWY:T5 | 2000 | 2000 | 2000 | | |
| TWY:T4 | 1500 | 1500 | 1500 | | |

RJOB AD 2.14 APPROACH AND RUNWAY LIGHTING

| RWY Designator | APCH LGT type LEN INTST | RTHL Color WBAR | PAPI (VASIS) Angle DIST FM THR MEHT | RTZL LEN | RCLL LEN Spacing Color INTST | REDL LEN Spacing Color INTST | RENL Color WBAR | STWL LEN Color |
|--|-------------------------|-----------------|-------------------------------------|----------|--|---|-----------------|----------------|
| 1 | 2 | 3 | 4 | 5 | 6 | 7 | 8 | 9 |
| 07 | PALS (CAT I) 900m LIH | Green Green | PAPI 3.0°/LEFT 413m 66ft | 900m | 3000m 30m Coded color (White/Red) LIH | 3000m 60m Coded color (White/Yellow) LIH | Red | Nil (*1) |
| 25 | SALS 420m LIH | Green | PAPI 3.0°/LEFT 511.6m 74ft | Nil | 3000m 30m Coded color (White/Red) LIH | 3000m 60m Coded color (White/Yellow) LIH | Red | Nil (*1) |
| Remarks | | | | | | | | |
| 10 | | | | | | | | |
| Overrun area edge LGT(LEN:60m Color:Red)(*1) CGL for RWY 25 | | | | | | | | |

RJOB AD 2.15 OTHER LIGHTING, SECONDARY POWER SUPPLY

| | | |
|---|--|--|
| 1 | ABN/IBN location, characteristics and hours of operation | ABN: 344544N/1335120E, White/Green EV4.3sec, HO |
| 2 | LDI location and LGT Anemometer location and LGT | LDI : Nil Anemometer : RWY 07 : 45m away from RWY 07 THR, 220.5m N of RCL. RWY 25 : 250m inside from RWY 25 THR, 120m S of RCL. |
| 3 | TWY edge and center line lighting | TWY edge and center line lights installed, see AD2.9 |
| 4 | Secondary power supply / switch-over time | Within 1 sec : RCLL, REDL, RTHL, RENL, WBAR, Overrun area edge LGT Within 15 sec : Other LGT |
| 5 | Remarks | WDI LGT |

RJOB AD 2.16 HELICOPTER LANDING AREA

| |
|-----|
| Nil |
|-----|

RJOB AD 2.17 ATS AIRSPACE

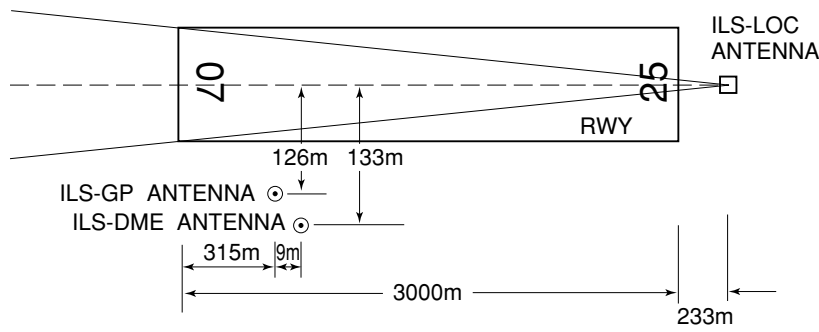
| Designation and lateral limits | | Vertical limits (ft) | Airspace classification | ATS unit call sign Language | Remarks |
|--------------------------------|--|----------------------|-------------------------|-----------------------------|---------|
| 1 | 2 | 3 | 4 | 6 | |
| OKAYAMA CTR | Area within a radius of 5nm of OKAYAMA ARP(34°45'N/133°51'E) | 3000 or below | D | OKAYAMA TOWER En | |

RJOB AD 2.18 ATS COMMUNICATION FACILITIES

| Service designation | Call sign | Frequency | Hours of operation | Remarks |
|---------------------|----------------------------------|---|--------------------|--|
| 1 | 2 | 3 | 4 | 5 |
| APP/ASR | Kansai Approach/ Kansai Radar | 121.2MHz(1) 120.4MHz 261.2MHz 121.5MHz(E) 243.0MHz(E) | 2200 - 1300 | (1) Primary APP Service Provided by Kansai APP |
| DEP | Kansai Departure | 120.4MHz 121.2MHz 261.2MHz 121.5MHz(E) 243.0MHz(E) | 2200 - 1300 | |
| TWR | Okayama Tower | 124.3MHz(1) 126.2MHz | 2200 - 1300 | (1)Primary |

RJOB AD 2.19 RADIO NAVIGATION AND LANDING AIDS

| Type of aid (VOR declination) | ID | Frequency | Hours of operation | Position of transmitting antenna coordinates | Elevation of DME transmitting antenna | Remarks |
|-------------------------------------|-----|---------------------|-----------------------|---|--|---|
| 1 | 2 | 3 | 4 | 5 | 6 | 7 |
| VOR (8°W/2016) | OYE | 111.0MHz | H24 | 344501.38N/ 1335006.20E | | |
| DME | OYE | 1008MHz (CH-47X) | H24 | 344501.38N/ 1335006.20E | 880ft | |
| ILS-LOC 07 | IOY | 110.3MHz | 2200-1300 | 344553.74N/ 1335218.11E | | LOC:233m(764ft) away FM RWY 25 THR, BRG(MAG) 067° |
| ILS-GP 07 | - | 335.0MHz | 2200-1300 | 344501.76N/ 1335042.01E | | GP:315m(1034ft) inside FM RWY 07 THR, 126m(413ft) S of RCL. HGT of ILS REF datum 16.5m(54ft) GP angle 3.0° |
| ILS-DME 07 | IOY | 1001MHz (CH-40X) | 2200-1300 | 344501.70N/ 1335042.50E | 819ft | DME:324m(1063ft) inside FM RWY 07 THR, 133m(436ft) S of RCL. |
| MSAS | | 1575.42MHz | H24 | | | Transmitting antennas are satellite based. |



- REMARKS :
1. ILS - LOC beam BRG(MAG) 067°
 2. HGT of ILS REF datum 16.5m(54ft)
 3. ILS - GP Angle 3.0°
 4. ELEV of ILS - DME 249.5m(819ft)

RJOB AD 2.20 LOCAL TRAFFIC REGULATIONS

1. Airport regulations

Nil

2. Taxiing to and from stands

Nil

3. Parking area for small aircraft(General aviation)

Nil

4. Parking area for helicopters

Nil

5. Apron - taxiing during winter conditions

Nil

6. Taxiing - limitations

1.Wing tip clearance at the TWY intersection (REF AD1.1.6.8)

Wing tip clearance at the TWY intersection between the aircraft holding at the stop marking on the TWY and the other aircraft taxiing behind it are as follows.

When B772 holding at the stop marking on TWY T2 or T6

| | | |
|--|-----------|-----------|
| Wing Span (WS) of aircraft taxiing on TWY P1-P2 or P5-P6 | WS ≤14.6m | WS >14.6m |
| Wing tip clearance | *B | *C |

Legend:

- *A : wing tip clearance ≥ 15m
- *B : 10.5m ≤ wing tip clearance < 15m
- *C : wing tip clearance < 10.5m

7. School and training flights - technical test flights - use of runways

Nil

8. Helicopter traffic - limitation

Nil

9. Removal of disabled aircraft from runways

Nil

10. Remarks

Nil

RJOB AD 2.21 NOISE ABATEMENT PROCEDURES

Nil

RJOB AD 2.22 FLIGHT PROCEDURES

1.TAKE OFF MINIMA

| | RWY | ACFT CAT | REDL & RCLL | | REDL or RCLL or RCL Marking | | NIL (DAYTIME ONLY) | |
|---|-----|------------|-----------------|------|-----------------------------|------|--------------------|------|
| | | | RVR | VIS | RVR | VIS | RVR | VIS |
| Multi-Engine ACFT with TKOF ALTN AP FILED | 07 | A, B, C, D | 400m | 400m | 400m | 400m | - | 500m |
| | 25 | A, B, C, D | - | 400m | - | 400m | - | 500m |
| OTHER | 07 | A, B, C, D | AVBL LDG MINIMA | | | | | |
| | 25 | | | | | | | |

2. Lost communication procedures for arrival aircraft under radar navigational guidance

If radio communications with Kansai Approach/Radar are lost for 1 minute, squawk Mode A/3 Code 7600 and;

- (I)
1. Contact Okayama Tower.
 2. If unable, proceed in accordance with Visual Flight Rules.
 3. If unable,
 - (1)When the aircraft is at or above 4,000ft, proceed to Kibi VOR/DME maintaining the last assigned altitude or 4,000ft whichever is higher and execute instrument approach.
 - (2)When the aircraft is below 4,000ft,
 - a. and established on a segment of the Instrument Approach Procedure, execute that Instrument Approach.
 - b. and not yet established on a segment of the Instrument Approach Procedure, climb and maintain 4,000ft and proceed to Kibi VOR/DME and execute instrument approach.
- (II) Procedures other than above will be issued when situation required.

RJOB AD 2.23 ADDITIONAL INFORMATION

Nil

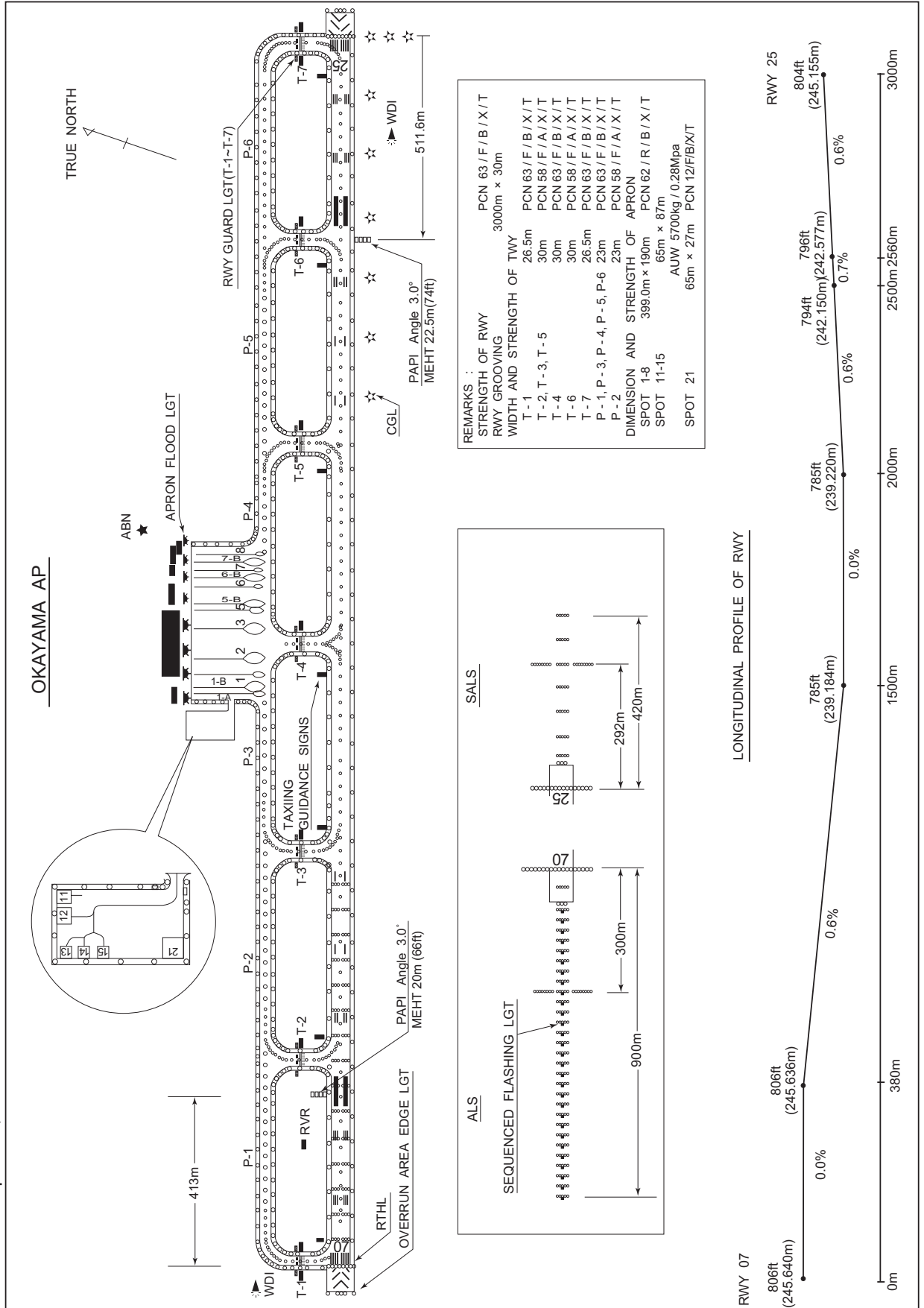
RJOB AD 2.24 CHARTS RELATED TO AN AERODROME

Aerodrome/Heliport Chart
Aerodrome Obstacle Chart - ICAO type A (RWY07)
Aerodrome Obstacle Chart - ICAO type A (RWY25)
Aerodrome Obstacle Chart - ICAO type B
Standard Departure Chart - Instrument (KIBI)
Standard Departure Chart - Instrument (CHIZU)
Standard Departure Chart - Instrument (MIYAZU TRANSITION)
Standard Departure Chart - Instrument (OLIVE-RNAV)
Standard Departure Chart - Instrument (WASYU-RNAV)
Instrument Approach Chart (ILS Z RWY07)
Instrument Approach Chart (ILS Y RWY07)
Instrument Approach Chart (LOC RWY07)
Instrument Approach Chart (VOR RWY07)
Instrument Approach Chart (VOR RWY25)
Instrument Approach Chart (RNP Z RWY07 (AR))
Instrument Approach Chart (RNP Y RWY07 (AR))
Instrument Approach Chart (RNP Z RWY25 (AR))
Instrument Approach Chart (RNP Y RWY25 (AR))
Other Chart (Visual REP)
Other Chart (LDG Chart)
Other Chart (MVA Chart)

RJOB / OKAYAMA

AD CHART

CHANGE : Spot 1A, 1B installed.



INTENTIONALLY LEFT BLANK

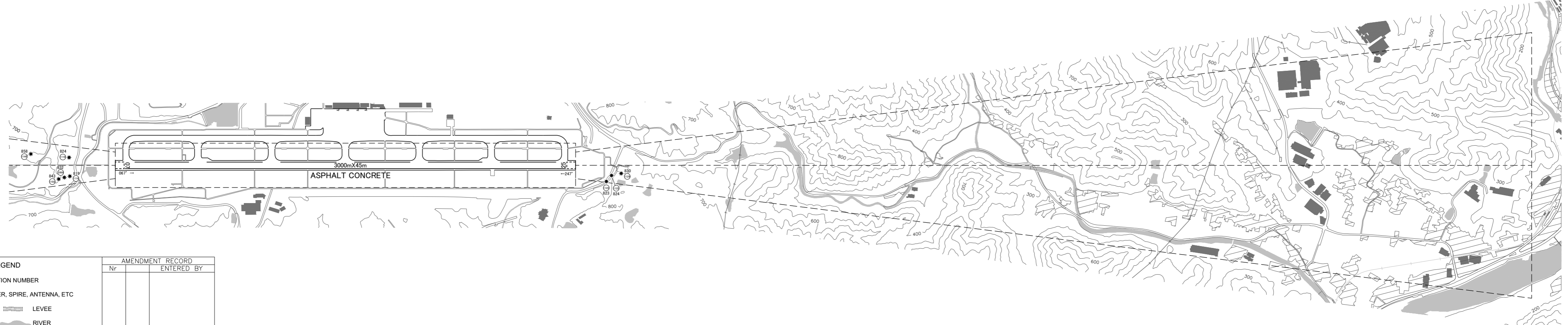
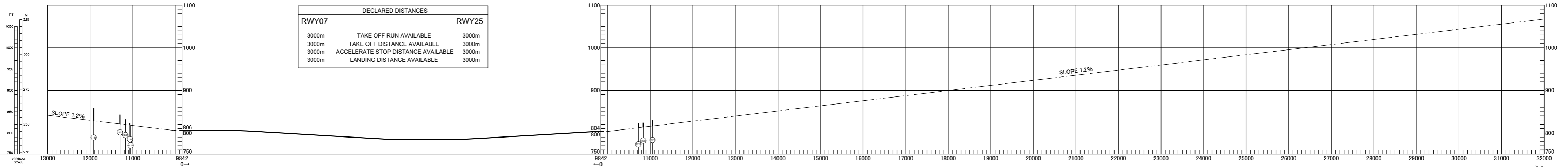
DIMENSIONS AND ELEVATIONS IN FEET BEARINGS ARE MAGNETIC
Transverse Mercator Projection

**AERODROME OBSTACLE CHART - ICAO
TYPE A (OPERATING LIMITATIONS)**

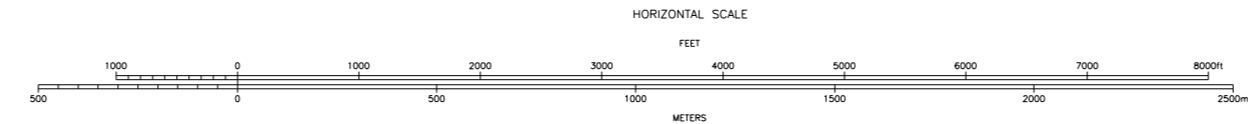
MAGNETIC VARIATION 8°W - MAR 2022

OKAYAMA AIRPORT
RWY : 07/25

| DECLARED DISTANCES | | |
|--------------------|------------------------------------|-------|
| RWY07 | | RWY25 |
| 3000m | TAKE OFF RUN AVAILABLE | 3000m |
| 3000m | TAKE OFF DISTANCE AVAILABLE | 3000m |
| 3000m | ACCELERATE STOP DISTANCE AVAILABLE | 3000m |
| 3000m | LANDING DISTANCE AVAILABLE | 3000m |



| LEGEND | | AMENDMENT RECORD | |
|--------|-------------------------------------|------------------|------------|
| | | Nr | ENTERED BY |
| ① | IDENTIFICATION NUMBER | | |
| ⊙ | POLE, TOWER, SPIRE, ANTENNA, ETC | | |
| * | TREE | | |
| | LEVEE | | |
| —+—+— | RAILROAD | | |
| — | RIVER | | |
| —+—+— | TRANSMISSION LINE OR OVERHEAD CABLE | | |
| ▲ | TRIANGULATION POINT | | |
| ★ | AERONAUTICAL GROUND LIGHT | | |
| ■ | BUILDING OR LARGE STRUCTURE | | |
| — | CONTOUR(S)(ft) | | |

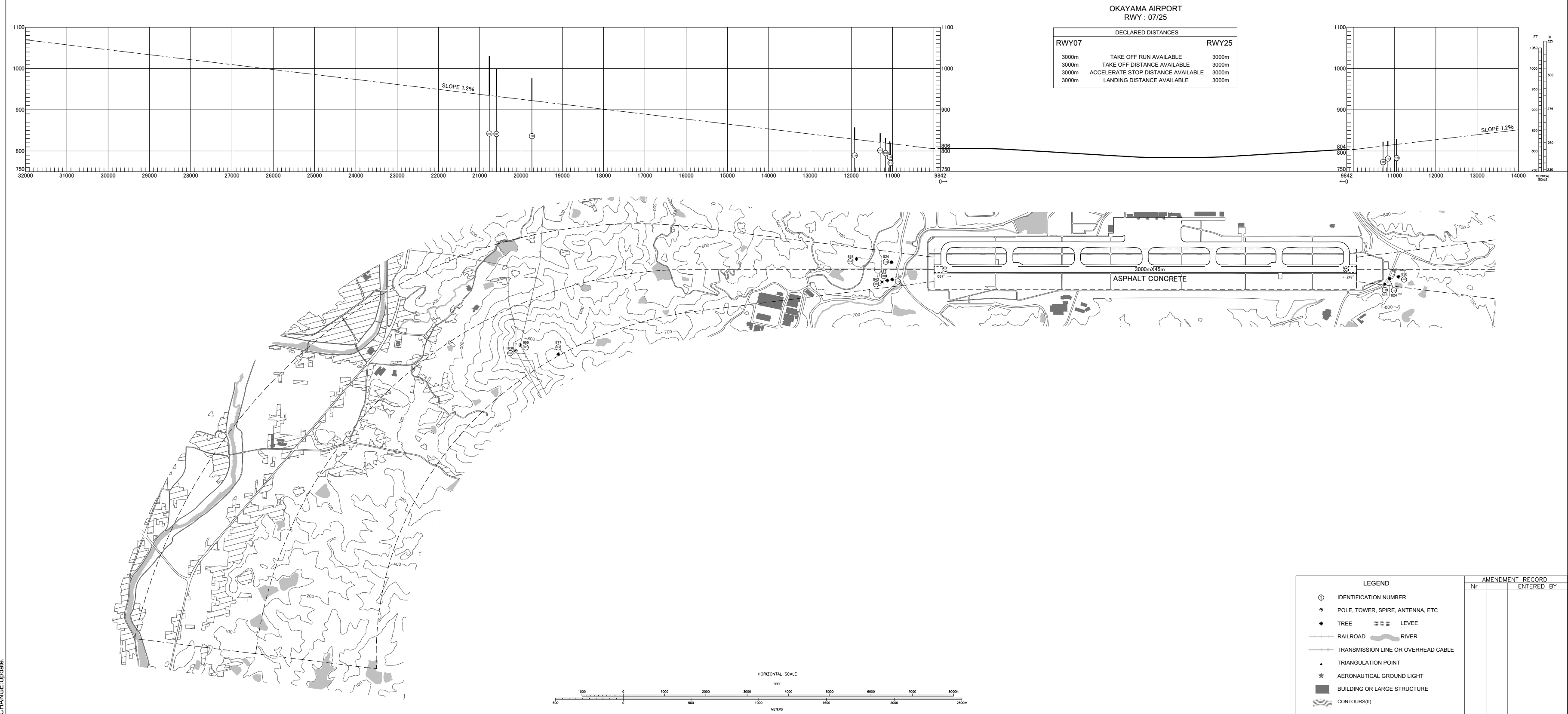


CHANGE: Update:

AERODROME OBSTACLE CHART - ICAO
TYPE A (OPERATING LIMITATIONS)

DIMENSIONS AND ELEVATIONS IN FEET BEARINGS ARE MAGNETIC
Transverse Mercator Projection

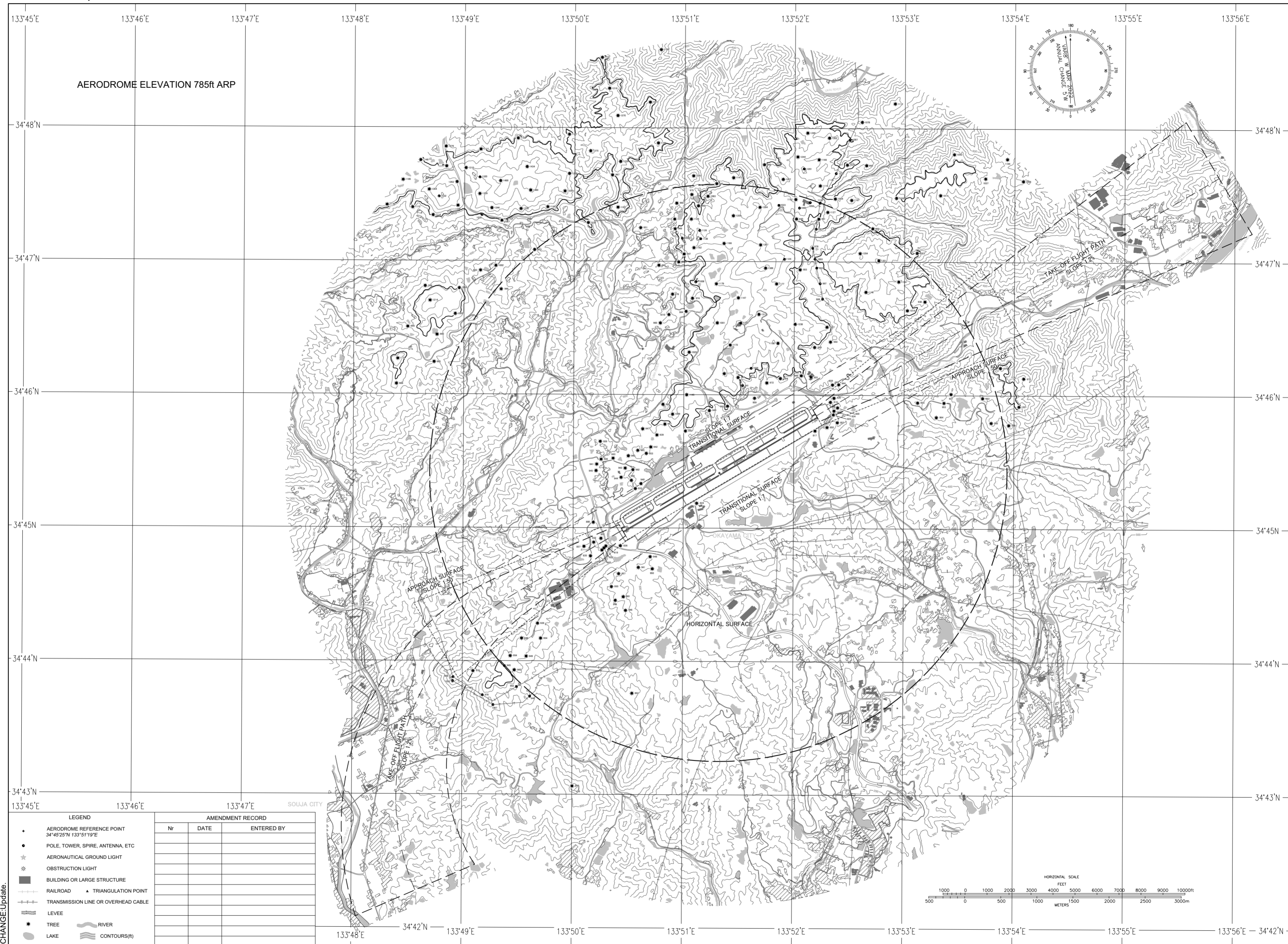
MAGNETIC VARIATION 8°W - MAR 2022



CHANGE: Update.

DIMENSIONS AND ELEVATIONS IN FEET BEARINGS ARE MAGNETIC
Transverse Mercator Projection

AERODROME OBSTACLE CHART-ICAO
TYPE B



AERODROME ELEVATION 785ft ARP

| LEGEND | | AMENDMENT RECORD | | |
|--------|---|------------------|------|------------|
| • | AERODROME REFERENCE POINT 34°45'25"N 133°51'19"E | Nr | DATE | ENTERED BY |
| ● | POLE, TOWER, SPIRE, ANTENNA, ETC | | | |
| ★ | AERONAUTICAL GROUND LIGHT | | | |
| ✱ | OBSTRUCTION LIGHT | | | |
| ■ | BUILDING OR LARGE STRUCTURE | | | |
| —+—+— | RAILROAD ▲ TRIANGULATION POINT | | | |
| —+—+— | TRANSMISSION LINE OR OVERHEAD CABLE | | | |
| —+—+— | LEVEE | | | |
| ● | TREE | | | |
| — | RIVER | | | |
| ○ | LAKE | | | |
| — | CONTOURS(1) | | | |

CHANGE/Update:

STANDARD DEPARTURE CHART - INSTRUMENT

RJOB / OKAYAMA

SID

KIBI REVERSAL SIX DEPARTURE

RWY 07 : Climb RWY HDG to 1400FT, via OYE R071 to 9.0DME, turn right,...

RWY 25 : Climb RWY HDG to 1400FT, turn left, via OYE R226 to 6.0DME, turn left,...

...direct to OYE VOR/DME.

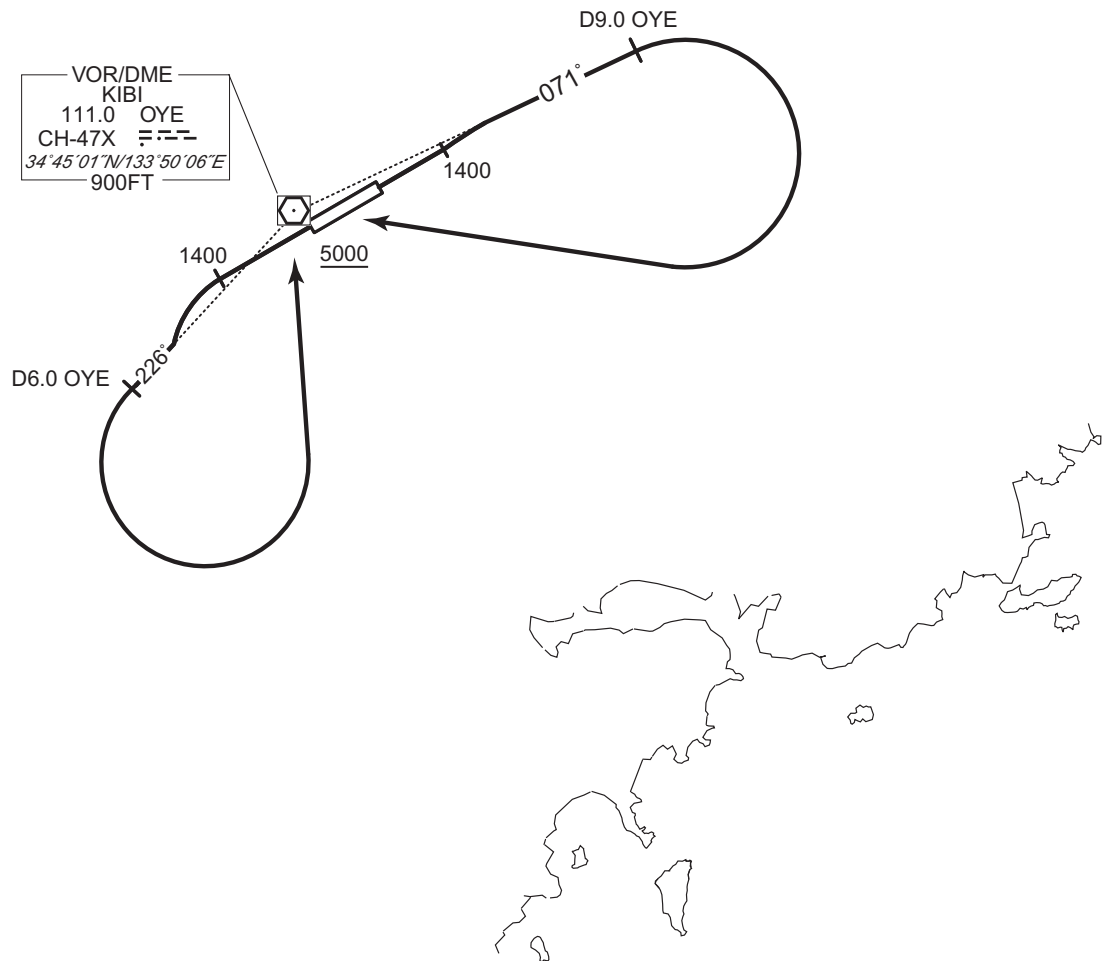
Cross OYE VOR/DME at or above 5000FT.

Note RWY07 : 5.3% climb gradient required up to 1400FT.

OBST ALT 1083FT located at 1.0NM 047° FM end of RWY07.

RWY25 : 4.0% climb gradient required up to 1400FT.

OBST ALT 1017FT located at 1.1NM 228° FM end of RWY25.



CHANGE : Description of PROC name.

STANDARD DEPARTURE CHART - INSTRUMENT

RJOB / OKAYAMA

SID

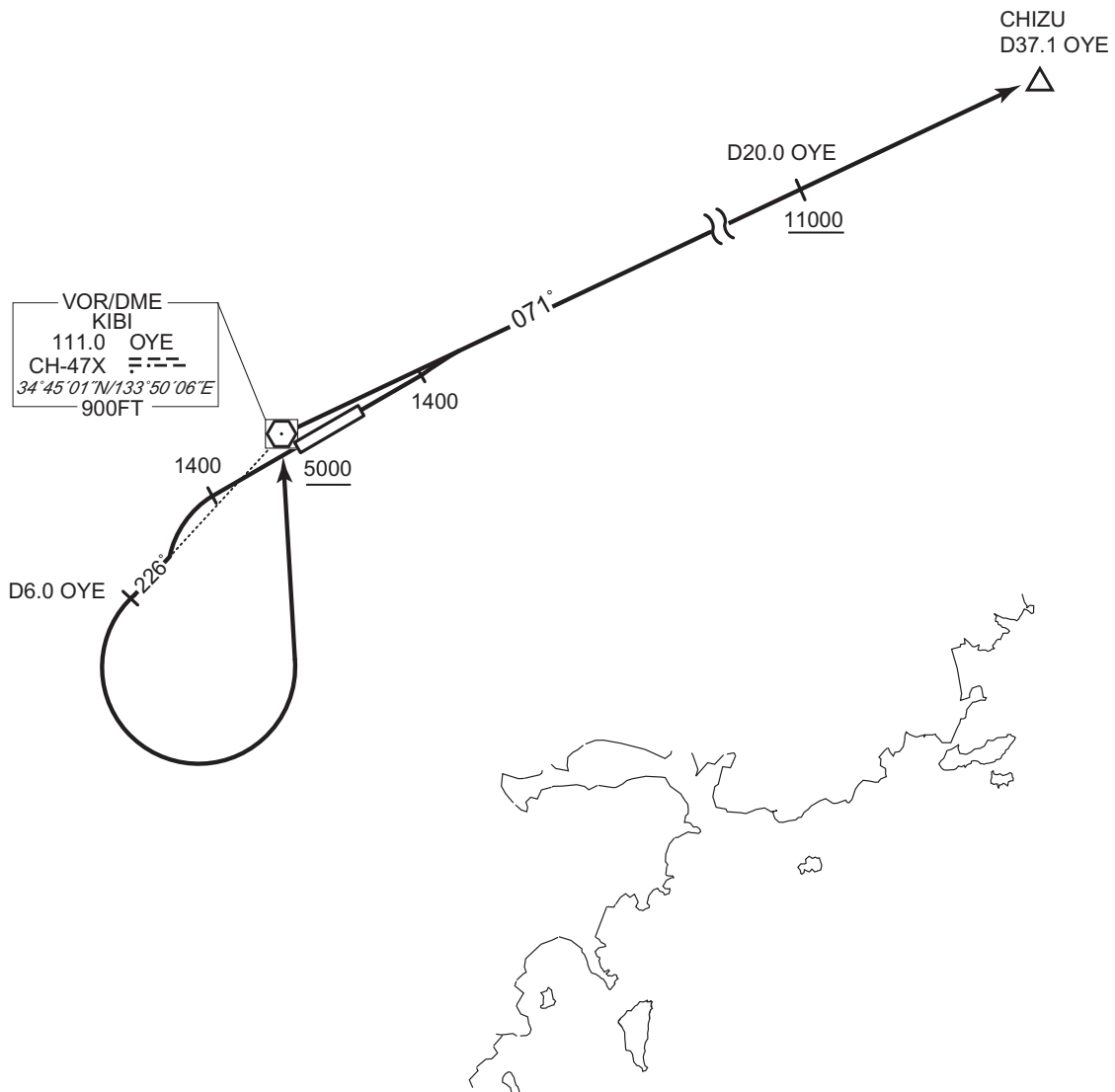
CHIZU TWO DEPARTURE

RWY 07 : Climb RWY HDG to 1400FT, via OYE R071 to CHIZU.
Cross OYE R071/20.0DME at or above 11000FT.

RWY 25 : Climb RWY HDG to 1400FT, turn left, via OYE R226 to 6.0DME, turn left,
direct to OYE VOR/DME, via OYE R071 to CHIZU.

Cross OYE VOR/DME at or above 5000FT.
Cross OYE R071/20.0DME at or above 11000FT.

Note RWY07 : 5.3% climb gradient required up to 1400FT.
OBST ALT 1083FT located at 1.0NM 047° FM end of RWY07.
RWY25 : 4.0% climb gradient required up to 1400FT.
OBST ALT 1017FT located at 1.1NM 228° FM end of RWY25.



CHANGE : Description of PROC name.

STANDARD DEPARTURE CHART - INSTRUMENT

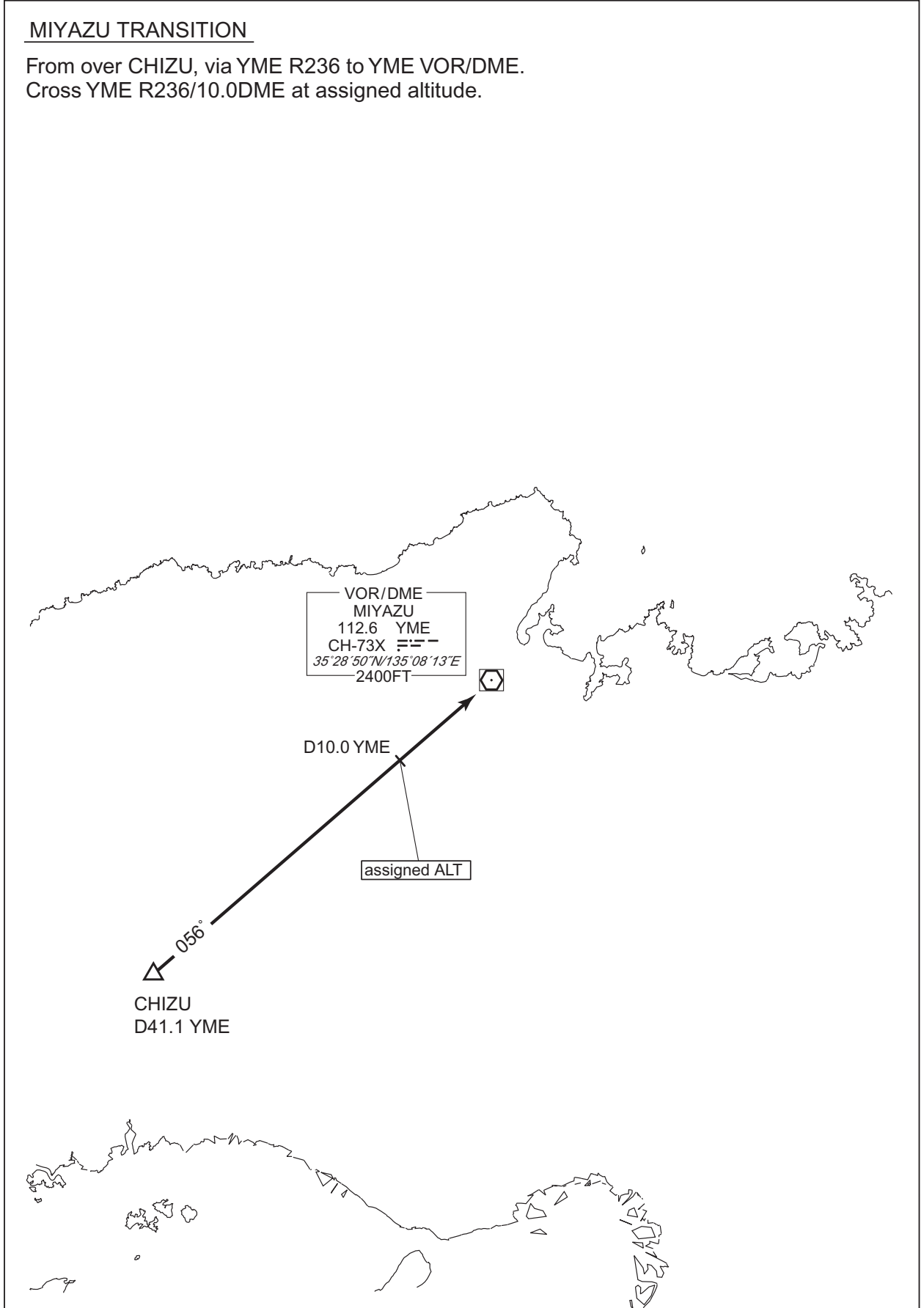
RJOB / OKAYAMA

TRANSITION

MIYAZU TRANSITION

From over CHIZU, via YME R236 to YME VOR/DME.
Cross YME R236/10.0DME at assigned altitude.

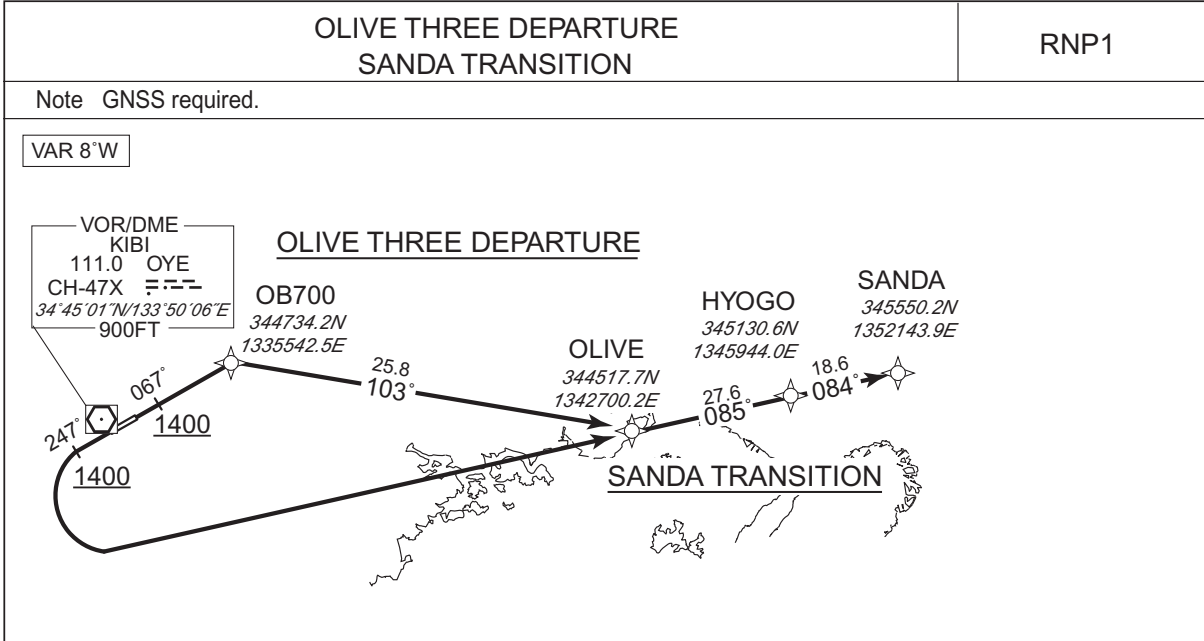
CHANGE : Description of PROC name.



STANDARD DEPARTURE CHART - INSTRUMENT

RJOB / OKAYAMA

RNAV SID and TRANSITION



OLIVE THREE DEPARTURE

RWY07 : Climb on HDG067° at or above 1400FT, direct to OB700, to OLIVE.
 RWY25 : Climb on HDG247° at or above 1400FT, turn left direct to OLIVE.
 Note RWY07 : 5.4% climb gradient required up to 1400FT.
 RWY25 : 4.0% climb gradient required up to 1600FT.
 OBST ALT 1922FT located at 5.0NM 104° FM end of RWY25.

SANDA TRANSITION

From OLIVE, to HYOGO, to SANDA.

CHANGE : Navigation Specification(Basic RNP1 → RNP1).

STANDARD DEPARTURE CHART - INSTRUMENT

RJOB / OKAYAMA

RNAV SID and TRANSITION

OLIVE THREE DEPARTURE

RWY07

| Serial Number | Path Descriptor | Waypoint Identifier | Fly Over | Course °M(°T) | Magnetic Variation | Distance (NM) | Turn Direction | Altitude (FT) | Speed (KIAS) | Vertical Angle | Navigation Specification |
|---------------|-----------------|---------------------|----------|----------------|--------------------|---------------|----------------|---------------|--------------|----------------|--------------------------|
| 001 | VA | - | - | 067 (059.1) | -8.1 | - | - | +1400 | - | - | RNP1 |
| 002 | DF | OB700 | - | - | -8.1 | - | - | - | - | - | RNP1 |
| 003 | TF | OLIVE | - | 103 (094.9) | -8.1 | 25.8 | - | - | - | - | RNP1 |

RWY25

| Serial Number | Path Descriptor | Waypoint Identifier | Fly Over | Course °M(°T) | Magnetic Variation | Distance (NM) | Turn Direction | Altitude (FT) | Speed (KIAS) | Vertical Angle | Navigation Specification |
|---------------|-----------------|---------------------|----------|----------------|--------------------|---------------|----------------|---------------|--------------|----------------|--------------------------|
| 001 | VA | - | - | 247 (239.1) | -8.1 | - | - | +1400 | - | - | RNP1 |
| 002 | DF | OLIVE | - | - | -8.1 | - | L | - | - | - | RNP1 |

SANDA TRANSITION

| Serial Number | Path Descriptor | Waypoint Identifier | Fly Over | Course °M(°T) | Magnetic Variation | Distance (NM) | Turn Direction | Altitude (FT) | Speed (KIAS) | Vertical Angle | Navigation Specification |
|---------------|-----------------|---------------------|----------|----------------|--------------------|---------------|----------------|---------------|--------------|----------------|--------------------------|
| 001 | IF | OLIVE | - | - | -8.1 | - | - | - | - | - | RNP1 |
| 002 | TF | HYOGO | - | 085 (076.8) | -8.1 | 27.6 | - | - | - | - | RNP1 |
| 003 | TF | SANDA | - | 084 (076.4) | -8.1 | 18.6 | - | - | - | - | RNP1 |

CHANGE : Navigation Specification(Basic RNP1 → RNP1).

STANDARD DEPARTURE CHART - INSTRUMENT

RJOB / OKAYAMA

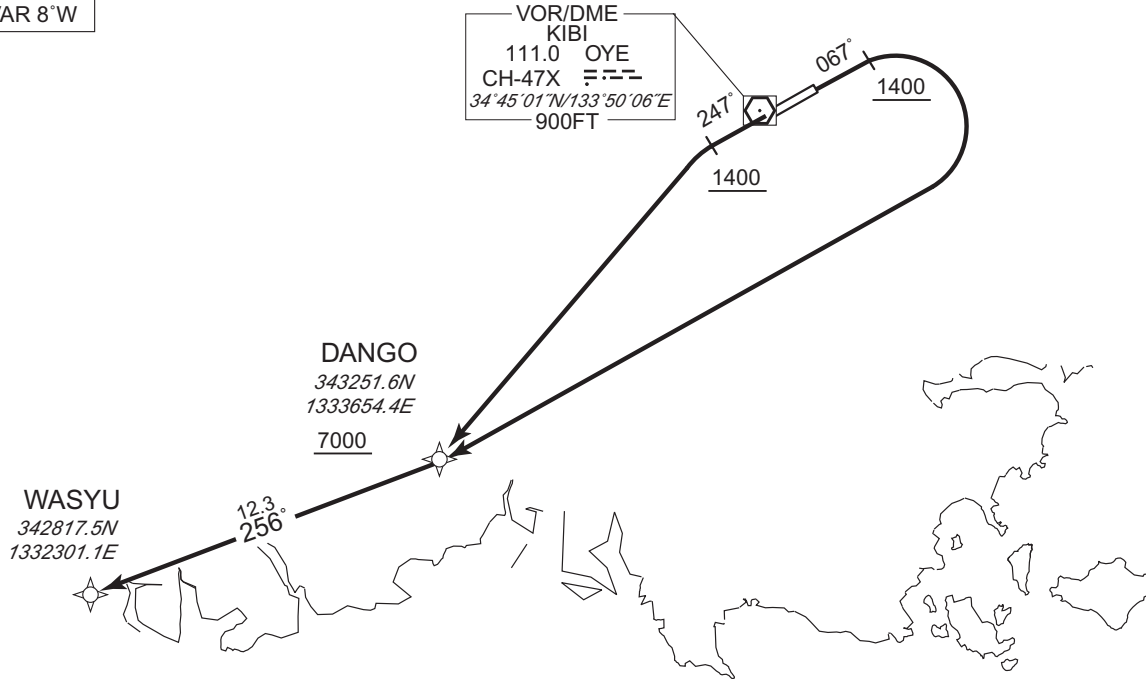
RNAV SID

WASYU TWO DEPARTURE

RNP1

Note GNSS required.

VAR 8°W



RWY07 : Climb on HDG067° at or above 1400FT, turn right direct to DANGO at or above 7000FT, to WASYU.

RWY25 : Climb on HDG247° at or above 1400FT, turn left direct to DANGO at or above 7000FT, to WASYU.

Note RWY07 : 5.4% climb gradient required up to 2300FT.
OBST ALT 1922FT located at 3.8NM 118° FM end of RWY07.
RWY25 : 4.0% climb gradient required up to 1400FT.
OBST ALT 1018FT located at 1.1NM 227° FM end of RWY25.

RWY07

| Serial Number | Path Descriptor | Waypoint Identifier | Fly Over | Course °M(°T) | Magnetic Variation | Distance (NM) | Turn Direction | Altitude (FT) | Speed (KIAS) | Vertical Angle | Navigation Specification |
|---------------|-----------------|---------------------|----------|----------------|--------------------|---------------|----------------|---------------|--------------|----------------|--------------------------|
| 001 | VA | — | — | 067 (059.1) | -8.1 | — | — | +1400 | — | — | RNP1 |
| 002 | DF | DANGO | — | — | -8.1 | — | R | +7000 | — | — | RNP1 |
| 003 | TF | WASYU | — | 256 (248.3) | -8.1 | 12.3 | — | — | — | — | RNP1 |

RWY25

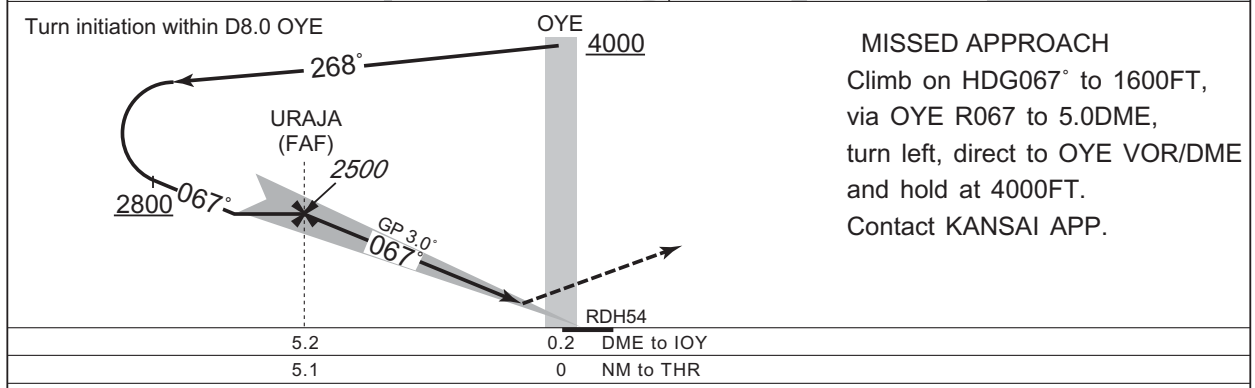
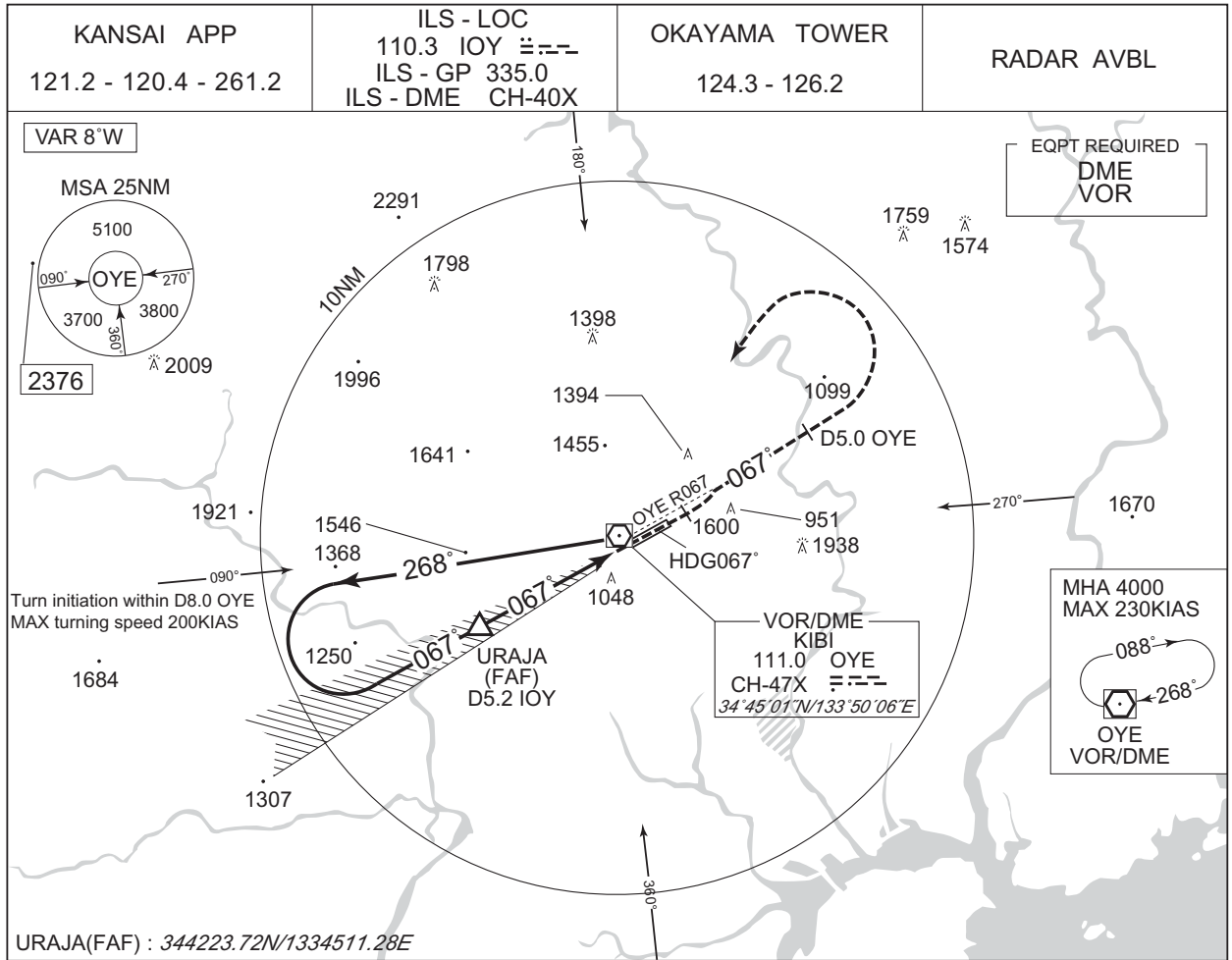
| Serial Number | Path Descriptor | Waypoint Identifier | Fly Over | Course °M(°T) | Magnetic Variation | Distance (NM) | Turn Direction | Altitude (FT) | Speed (KIAS) | Vertical Angle | Navigation Specification |
|---------------|-----------------|---------------------|----------|----------------|--------------------|---------------|----------------|---------------|--------------|----------------|--------------------------|
| 001 | VA | — | — | 247 (239.1) | -8.1 | — | — | +1400 | — | — | RNP1 |
| 002 | DF | DANGO | — | — | -8.1 | — | L | +7000 | — | — | RNP1 |
| 003 | TF | WASYU | — | 256 (248.3) | -8.1 | 12.3 | — | — | — | — | RNP1 |

CHANGE : Navigation Specification(Basic RNP1 → RNP1).

INSTRUMENT APPROACH CHART

RJOB / OKAYAMA

ILS Z RWY07



CHANGE : Description of VAR.

Missed APCH climb gradient MNM 5.0%

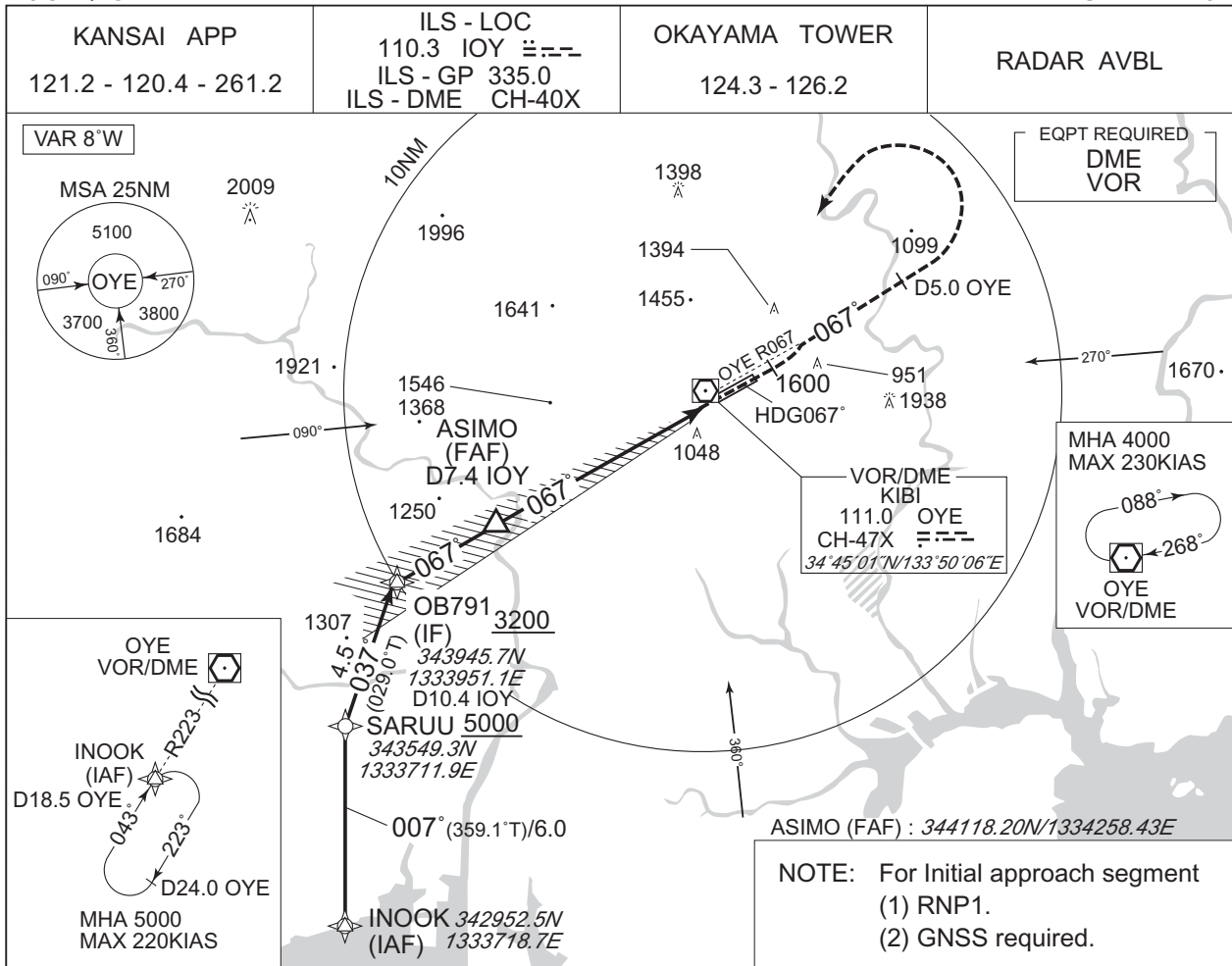
| | | | | |
|--------|---------------|--------------|------------|------|
| MINIMA | THR elev. 806 | AD elev. 785 | | |
| CAT | CAT I | | CIRCLING | |
| | DA(H) | RVR/ CMV | MDA(H) | VIS |
| A | 1006 (200) | 550 | 1510 (725) | 1600 |
| B | | | | 2400 |
| C | | | | 2400 |
| D | | | | 3200 |

Circling to SOUTH side of RWY only.
MINIMA with Missed APCH climb gradient of 2.5% are not established.

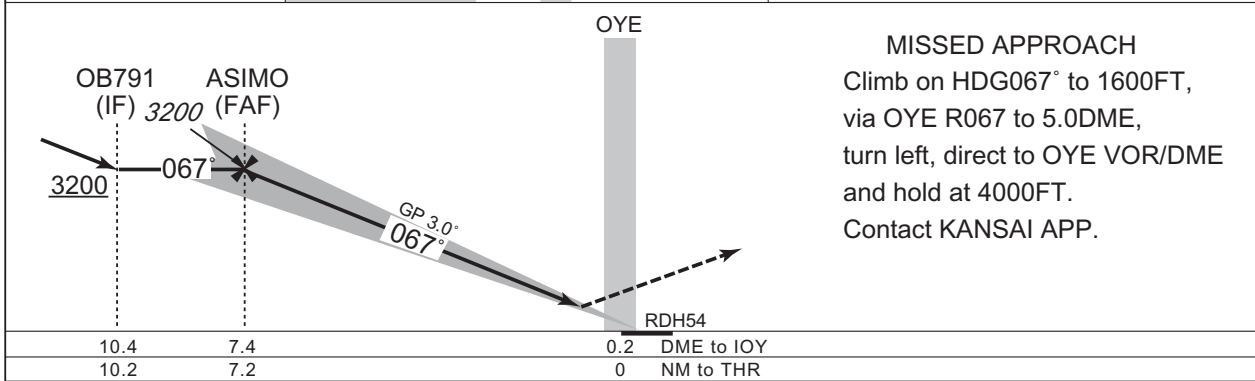
INSTRUMENT APPROACH CHART

RJOB / OKAYAMA

ILS Y RWY07



CHANGE : Navigation Specification(Basic RNP1 → RNP1).



Missed APCH climb gradient MNM 5.0%

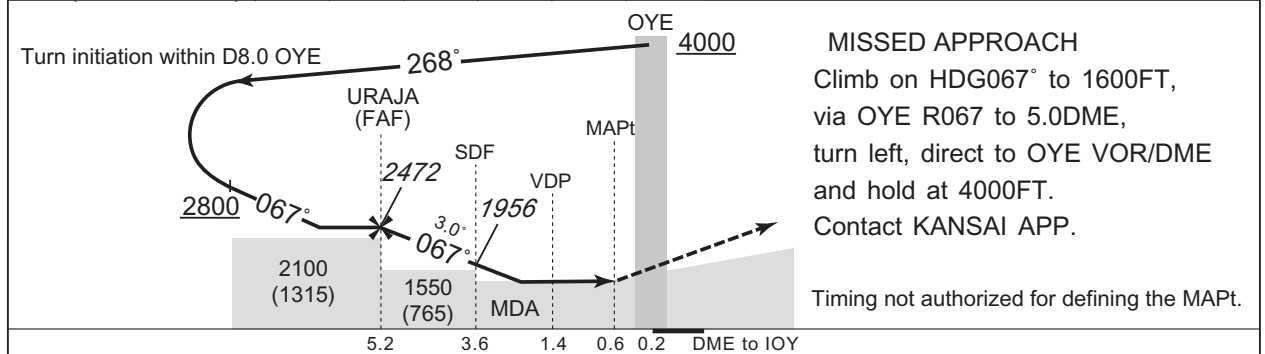
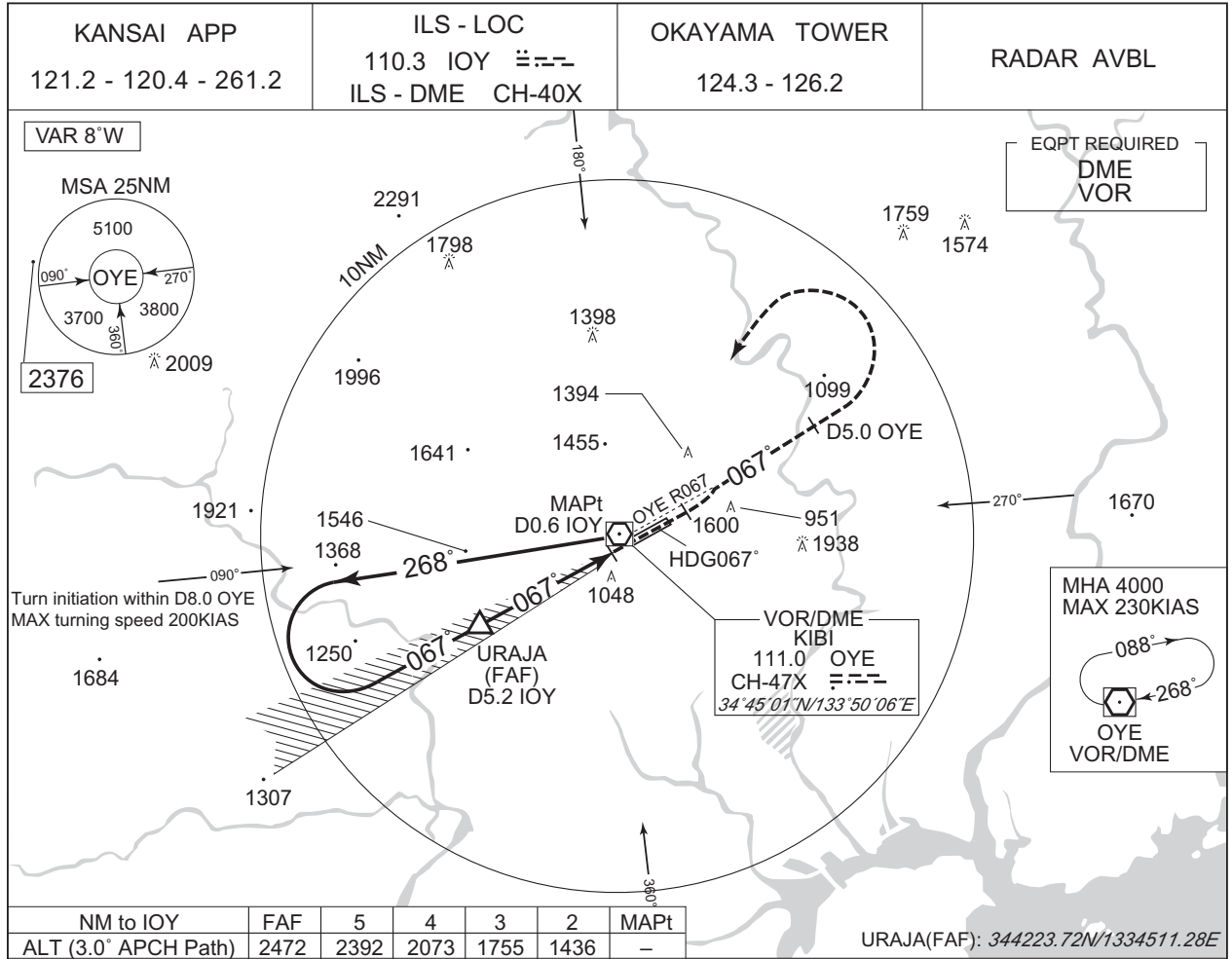
| | | | | |
|--------|---------------|--------------|------------|------|
| MINIMA | THR elev. 806 | AD elev. 785 | | |
| CAT | CAT I | | CIRCLING | |
| | DA(H) | RVR/CMV | MDA(H) | VIS |
| A | 1006 (200) | 550 | 1510 (725) | 1600 |
| B | | | | 2400 |
| C | | | | |
| D | | | | |

MINIMA with Missed APCH climb gradient of 2.5% are not established.
Circling to SOUTH side of RWY only.

INSTRUMENT APPROACH CHART

RJOB / OKAYAMA

LOC RWY07



CHANGE : Description of VAR.

Missed APCH climb gradient MNM 5.0%

| | | | |
|-----|------------|---------------|--------------|
| | MINIMA | THR elev. 806 | AD elev. 785 |
| CAT | MDA(H) | RVR/CMV | CIRCLING |
| A | 1240 (455) | 1000 | 1600 |
| B | | 1510 (725) | 2400 |
| C | | | 3200 |
| D | | | 1600 |

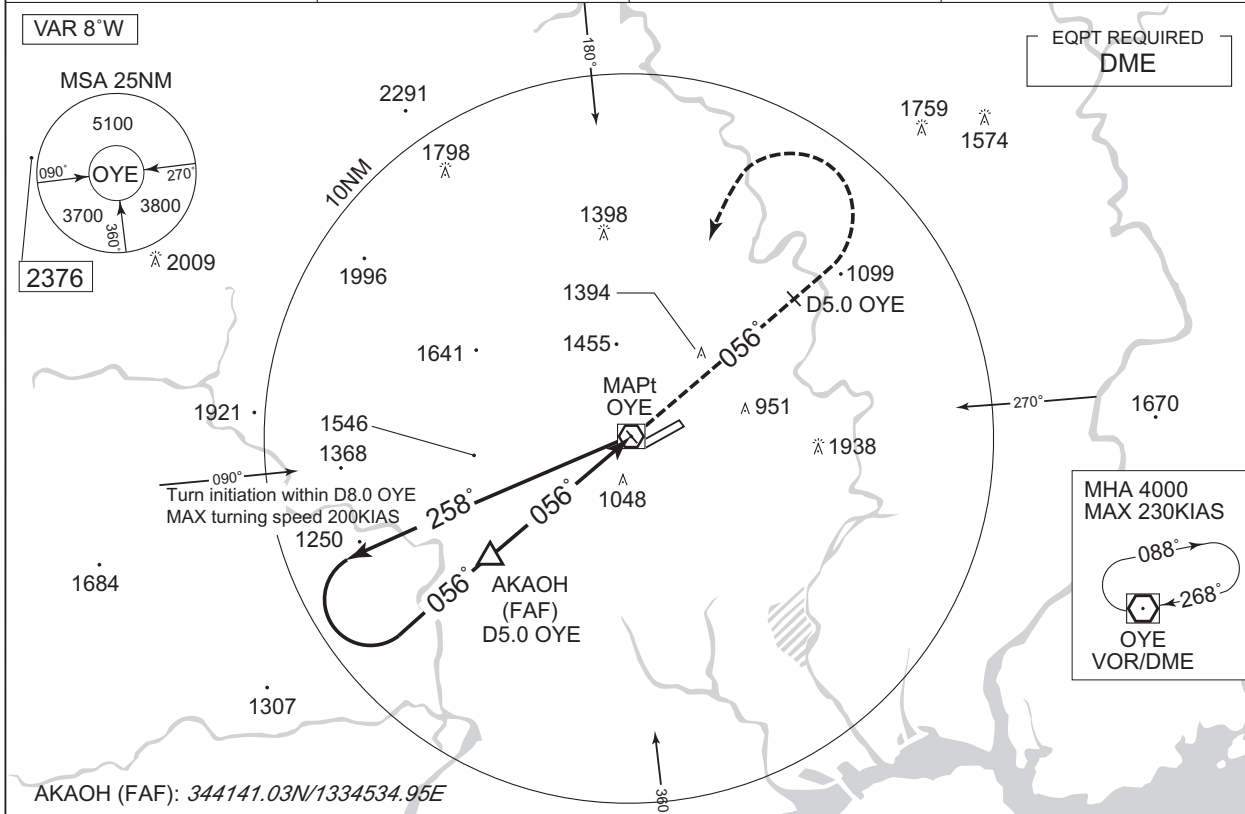
Circling to SOUTH side of RWY only.
MINIMA with Missed APCH climb gradient of 2.5% are not established.

INSTRUMENT APPROACH CHART

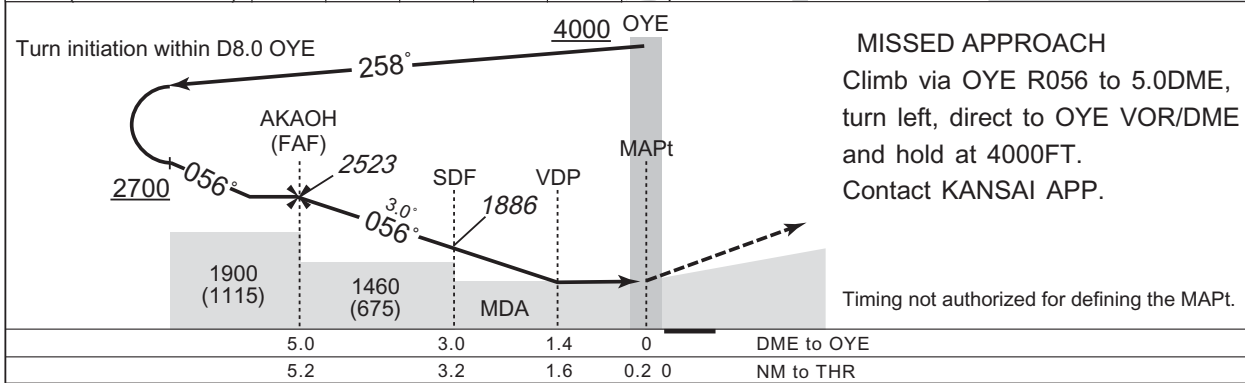
RJOB / OKAYAMA

VOR RWY07

| | | | |
|-------------------------------------|--|--------------------------------|------------|
| KANSAI APP 121.2 - 120.4 - 261.2 | KIBI VOR/DME 111.0 OYE CH-47X $\equiv \equiv \equiv$ 34°45'01"N/133°50'06"E | OKAYAMA TOWER 124.3 - 126.2 | RADAR AVBL |
|-------------------------------------|--|--------------------------------|------------|



| | | | | | |
|----------------------|------|------|------|------|------|
| NM to OYE | FAF | 4 | 3 | 2 | MAPt |
| ALT (3.0° APCH Path) | 2523 | 2205 | 1886 | 1568 | - |



| | | | | |
|-----|-----|-----|-------|------------|
| 5.0 | 3.0 | 1.4 | 0 | DME to OYE |
| 5.2 | 3.2 | 1.6 | 0.2 0 | NM to THR |

Missed APCH climb gradient MNM 3.0%

| | | |
|--------|---------------|--------------|
| MINIMA | THR elev. 806 | AD elev. 785 |
| CAT | CIRCLING | |
| | MDA(H) | RVR/CMV |
| A | 1350 (565) | 1000 |
| B | 1510 (725) | 1200 |
| C | | |
| D | | 1600 |
| | | 3200 |

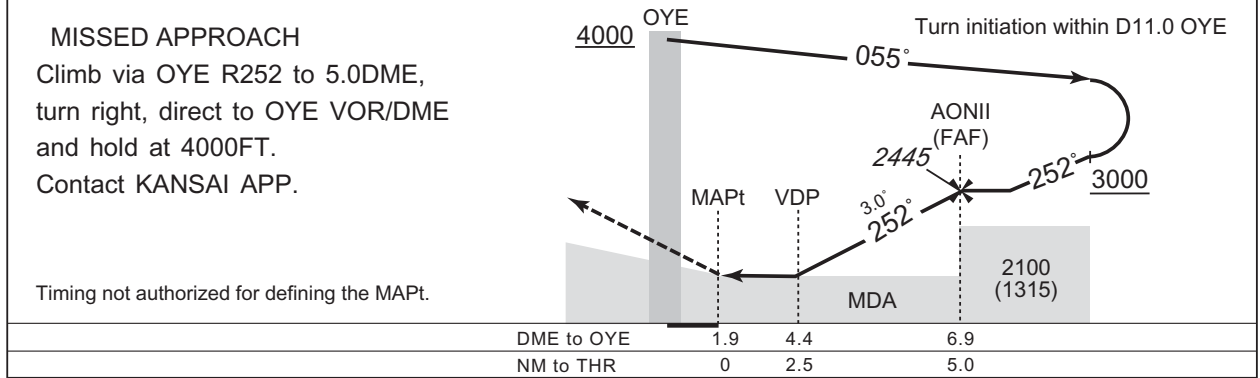
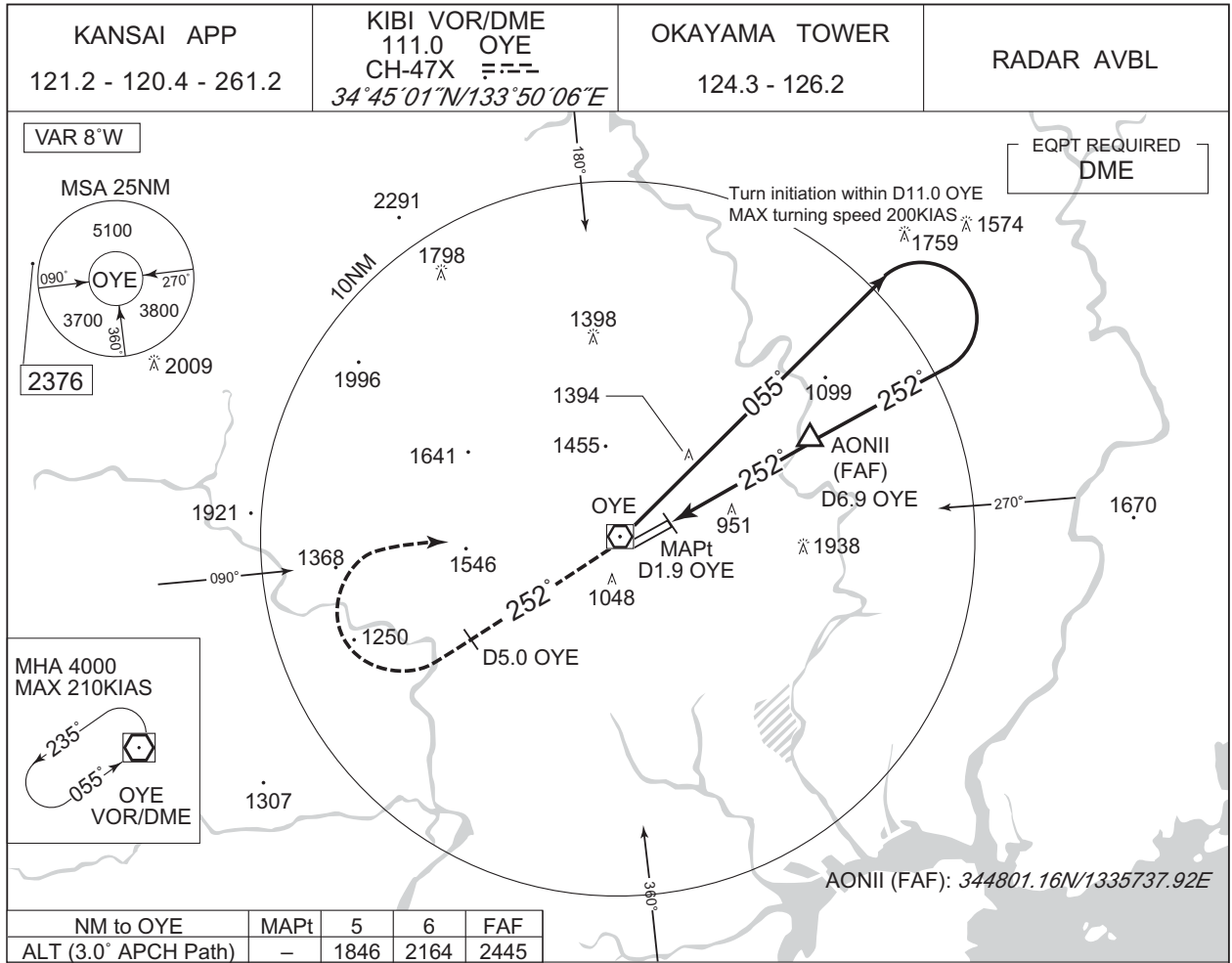
MINIMA with Missed APCH climb gradient of 2.5% are not established.
Circling to SOUTH side of RWY only.

CHANGE : Description of VAR.

INSTRUMENT APPROACH CHART

RJOB / OKAYAMA

VOR RWY25



CHANGE : Description of VAR.

| | | | | |
|-------------------------------------|------------|---------------|--------------|------|
| MINIMA | | THR elev. 804 | AD elev. 785 | |
| CAT | | | CIRCLING | |
| | MDA(H) | CMV | MDA(H) | VIS |
| A | 1620 (835) | 1500 | 1620 (835) | 1600 |
| B | | | | 2400 |
| C | | 1800 | | 3200 |
| D | | 2000 | | |
| Circling to SOUTH side of RWY only. | | | | |

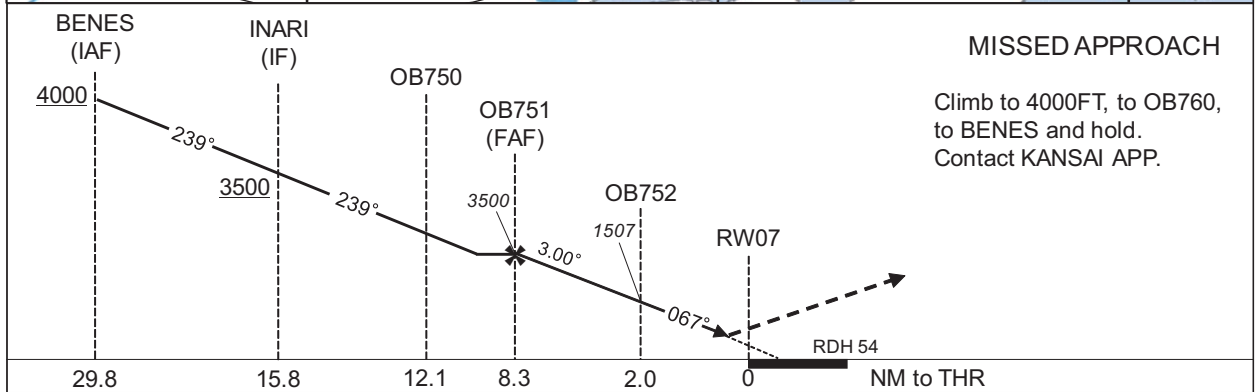
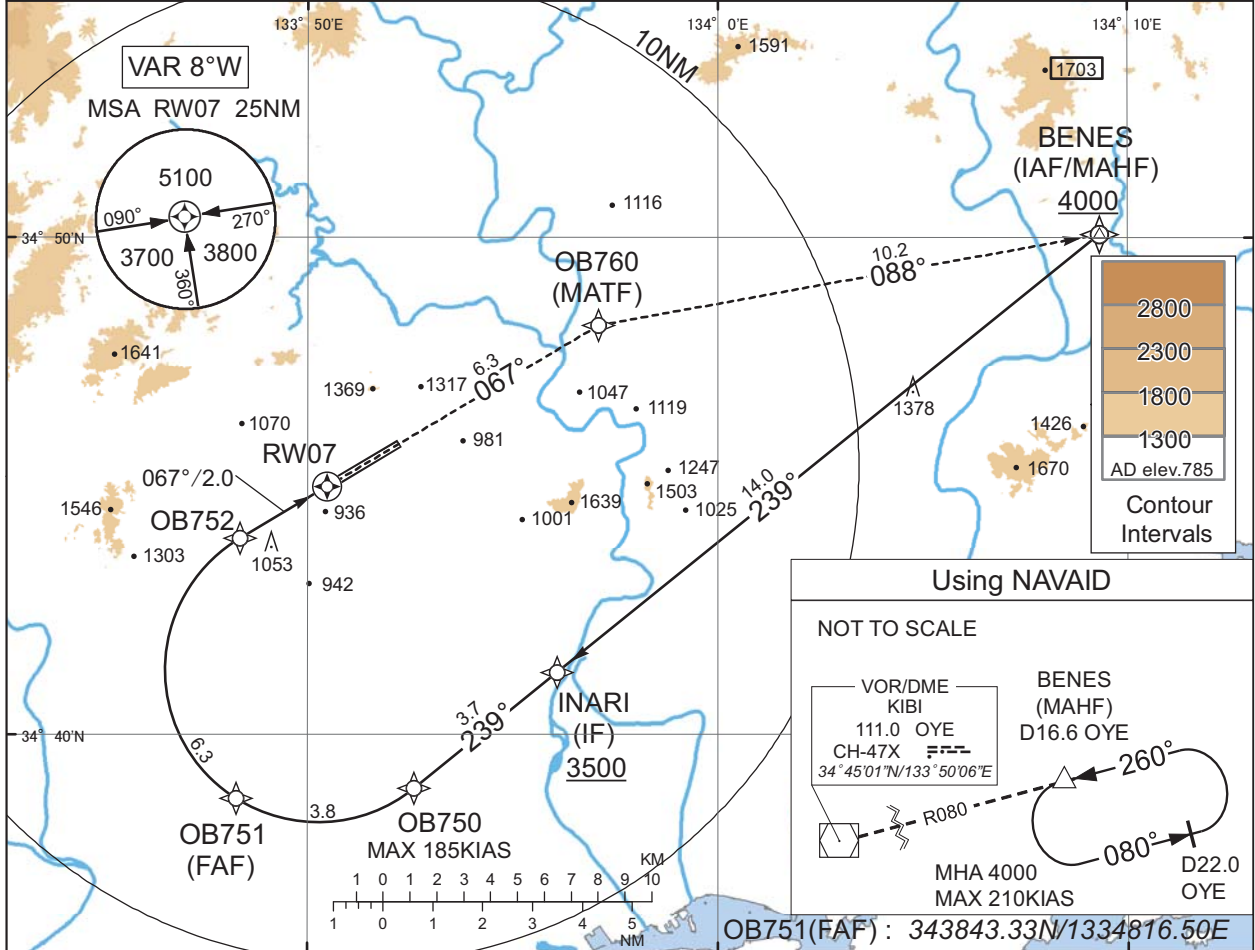
INSTRUMENT APPROACH CHART

RJOB / OKAYAMA

RNP Z RWY07(AR)

| | | | |
|-------------------------------------|------------------------|--------------------------------|------------|
| KANSAI APP 121.2 - 120.4 - 261.2 | RNP AR RF required. | OKAYAMA TOWER 124.3 - 126.2 | RADAR AVBL |
|-------------------------------------|------------------------|--------------------------------|------------|

For uncompensated Baro-VNAV systems, procedure not authorized below -10°C / above 45°C



Missed APCH climb gradient MNM 4.0%

| MINIMA | THR elev. 806 | AD elev. 785 |
|--------|---------------|--------------|
| CAT | RNP 0.30 | |
| | DA(H) | RVR/CMV |
| A | - | - |
| B | - | - |
| C | 1233(427) | 1000 |
| D | - | 1400 |

Authorization Required

MINIMA with Missed APCH climb gradient of 2.5% are not established.

CHANGE : Description of VAR.

INSTRUMENT APPROACH CHART

RJOB / OKAYAMA

RNP Z RWY07(AR)

Coding Table

| Serial Number | Path Descriptor | Waypoint Identifier | Fly Over | Course °M(°T) | Magnetic Variation | Distance (NM) | Turn Direction | Altitude (FT) | Speed (KIAS) | VPA/RDH (°/FT) | RNP Value |
|---------------|------------------------------------|---------------------|----------|----------------|--------------------|---------------|----------------|---------------|--------------|----------------|-----------|
| 001 | IF | BENES | - | - | -8.1 | - | - | +4000 | - | - | - |
| 002 | TF | INARI | - | 239 (231.0) | -8.1 | 14.0 | - | +3500 | - | - | 1.0 |
| 003 | TF | OB750 | - | 239 (230.9) | -8.1 | 3.7 | - | - | -185 | - | 1.0 |
| 004 | RF Center: OBRF1 r=3.07NM | OB751 | - | - | -8.1 | 3.8 | R | 3500 | - | - | 1.0 |
| 005 | RF Center: OBRF1 r=3.07NM | OB752 | - | - | -8.1 | 6.3 | R | 1507 | - | -3.00 | 0.3 |
| 006 | TF | RW07 | Y | 067 (059.1) | -8.1 | 2.0 | - | 860 | - | -3.00/54 | 0.3 |
| 007 | TF | OB760 | - | 067 (059.1) | -8.1 | 6.3 | - | - | - | - | 1.0 |
| 008 | TF | BENES | - | 088 (079.6) | -8.1 | 10.2 | - | 4000 | - | - | 1.0 |

Waypoint Coordinates

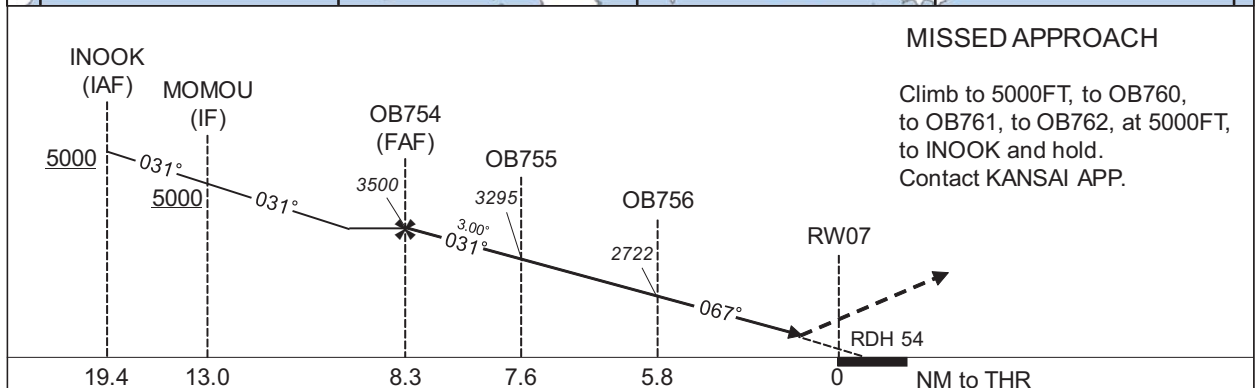
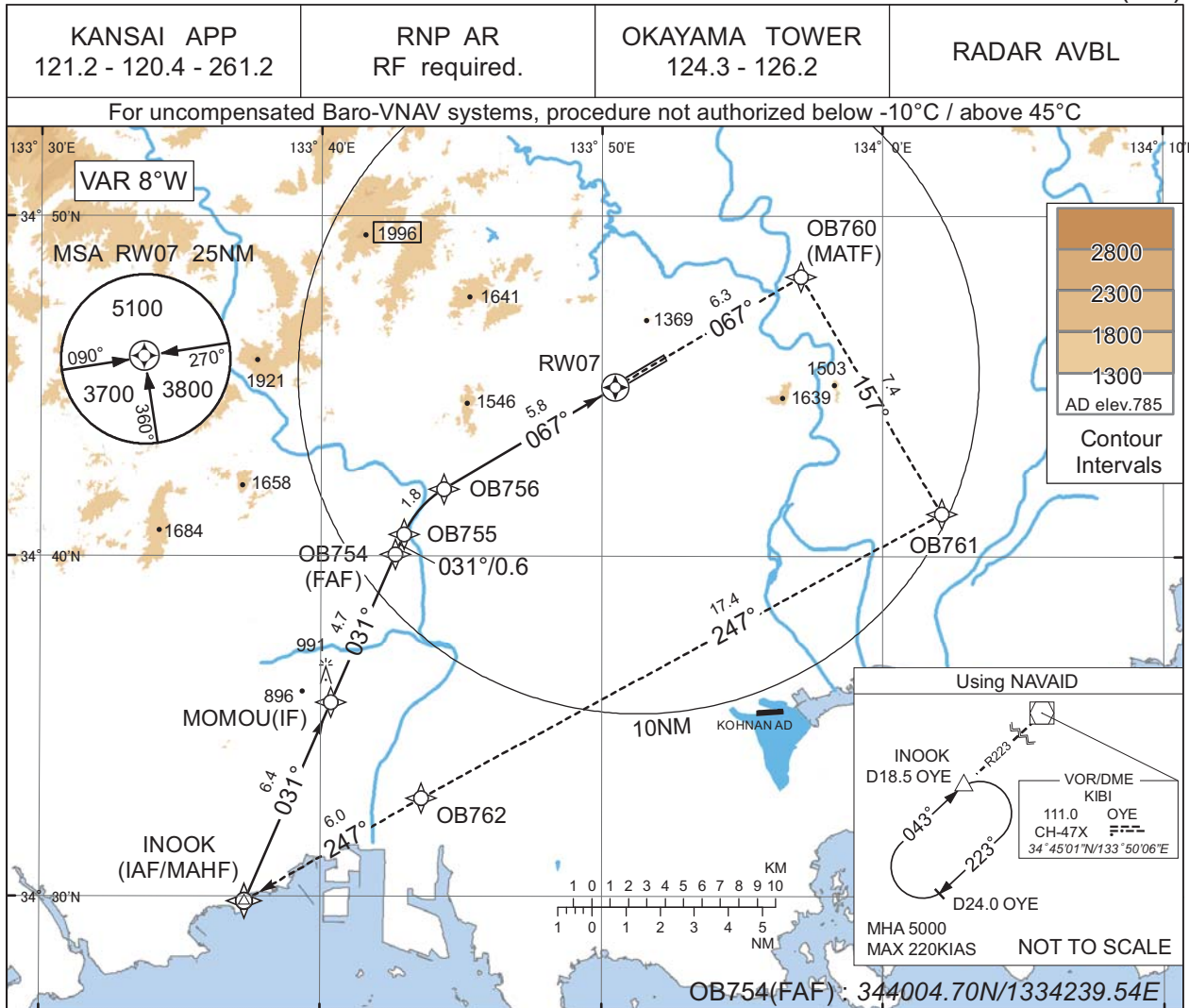
| Waypoint Identifier | Coordinates | RF Arc Center Identifier | Coordinates |
|---------------------|--------------------------|--------------------------|--------------------------|
| INARI | 344115.72N / 1335605.70E | OBRF1 | 344119.08N / 1335015.95E |
| OB750 | 343855.80N / 1335236.42E | | |
| OB751 | 343843.33N / 1334816.50E | | |
| OB752 | 344357.48N / 1334821.64E | | |
| RW07 | 344500.07N / 1335028.89E | | |
| OB760 | 344814.99N / 1335705.97E | | |
| BENES | 345004.35N / 1340919.47E | | |

CHANGE : PROC renamed.

INSTRUMENT APPROACH CHART

RJOB / OKAYAMA

RNP Y RWY07(AR)



CHANGE : Description of VAR.

Missed APCH climb gradient MNM 4.0%

| | | |
|--------|---------------|--------------|
| MINIMA | THR elev. 806 | AD elev. 785 |
| CAT | RNP 0.30 | |
| | DA(H) | RVR/CMV |
| A | - | - |
| B | - | - |
| C | 1233(427) | 1000 |
| D | | 1400 |

MINIMA with Missed APCH Climb gradient of 2.5% are not established.

Authorization Required

INSTRUMENT APPROACH CHART

RJOB / OKAYAMA

RNP Y RWY07(AR)

Coding Table

| Serial Number | Path Descriptor | Waypoint Identifier | Fly Over | Course °M(°T) | Magnetic Variation | Distance (NM) | Turn Direction | Altitude (FT) | Speed (KIAS) | VPA/RDH (°/FT) | RNP Value |
|---------------|------------------------------------|---------------------|----------|----------------|--------------------|---------------|----------------|---------------|--------------|----------------|-----------|
| 001 | IF | INOOK | - | - | -8.1 | - | - | +5000 | - | - | - |
| 002 | TF | MOMOU | - | 031 (023.3) | -8.1 | 6.4 | - | +5000 | - | - | 0.3 |
| 003 | TF | OB754 | - | 031 (023.3) | -8.1 | 4.7 | - | 3500 | - | - | 0.3 |
| 004 | TF | OB755 | - | 031 (023.4) | -8.1 | 0.6 | - | 3295 | - | -3.00 | 0.3 |
| 005 | RF Center: OBRF2 r=2.89NM | OB756 | - | - | -8.1 | 1.8 | R | 2722 | - | -3.00 | 0.3 |
| 006 | TF | RW07 | Y | 067 (059.0) | -8.1 | 5.8 | - | 860 | - | -3.00/54 | 0.3 |
| 007 | TF | OB760 | - | 067 (059.1) | -8.1 | 6.3 | - | - | - | - | 1.0 |
| 008 | TF | OB761 | - | 157 (149.4) | -8.1 | 7.4 | - | - | - | - | 1.0 |
| 009 | TF | OB762 | - | 247 (239.2) | -8.1 | 17.4 | - | 5000 | - | - | 1.0 |
| 010 | TF | INOOK | - | 247 (239.0) | -8.1 | 6.0 | - | 5000 | - | - | 1.0 |

Waypoint Coordinates

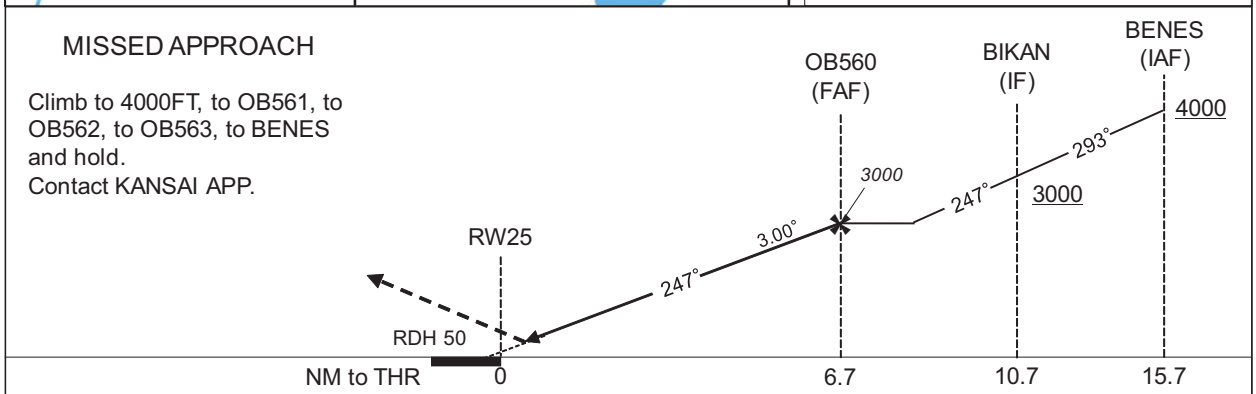
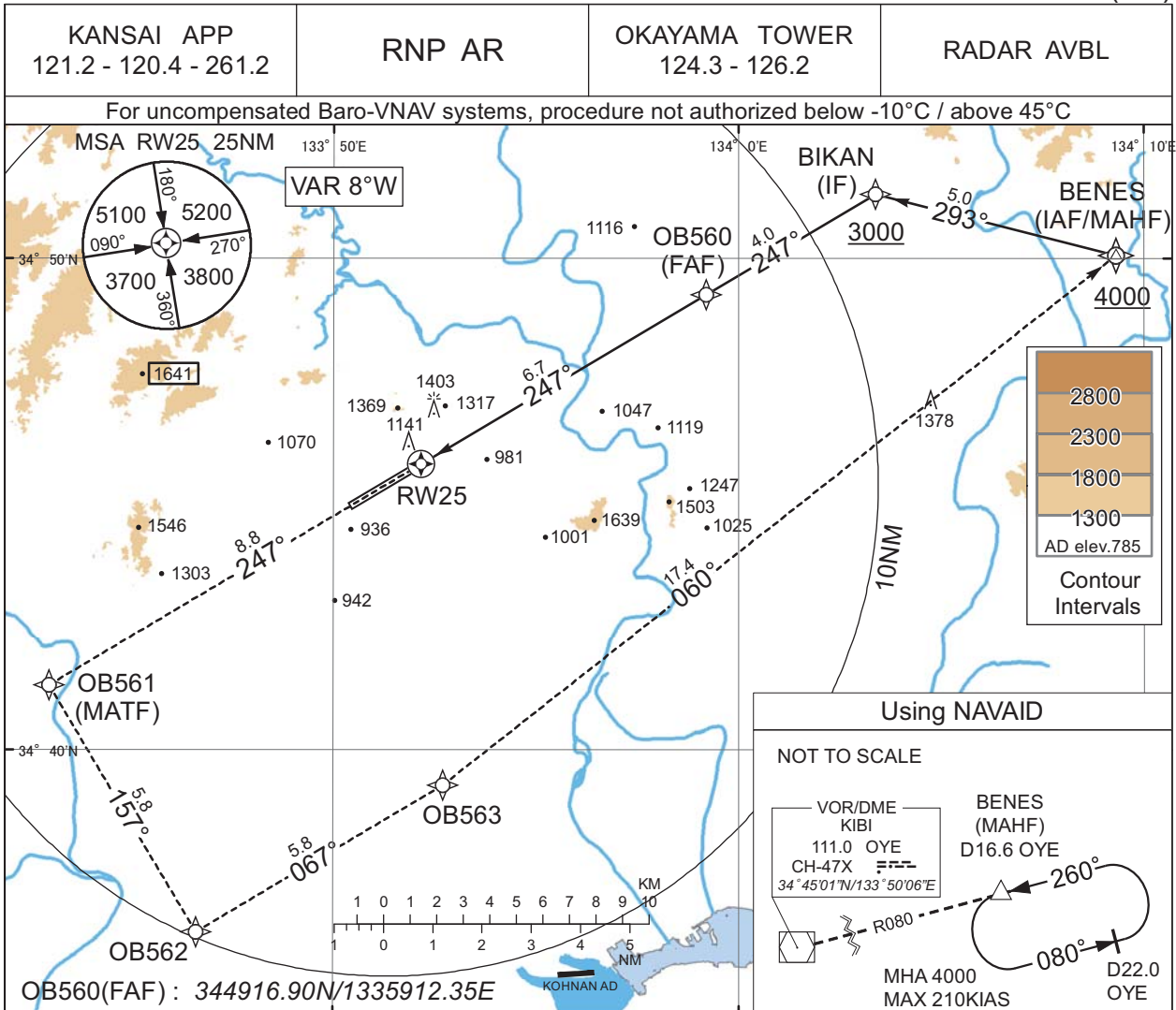
| Waypoint Identifier | Coordinates | RF Arc Center Identifier | Coordinates |
|---------------------|--------------------------|--------------------------|--------------------------|
| INOOK | 342952.48N / 1333718.65E | OBRF2 | 343930.88N / 1334610.90E |
| MOMOU | 343543.45N / 1334022.43E | | |
| OB754 | 344004.70N / 1334239.54E | | |
| OB755 | 344040.07N / 1334258.12E | | |
| OB756 | 344200.00N / 1334423.17E | | |
| RW07 | 344500.07N / 1335028.89E | | |
| OB760 | 344814.99N / 1335705.97E | | |
| OB761 | 344152.88N / 1340140.81E | | |
| OB762 | 343257.58N / 1334332.75E | | |

CHANGE : PROC renamed.

INSTRUMENT APPROACH CHART

RJOB / OKAYAMA

RNP Z RWY25(AR)



Missed APCH climb gradient MNM 5.0% for RNP 0.10

| | | | | |
|--------|---------------|------|--------------|------|
| MINIMA | THR elev. 804 | | AD elev. 785 | |
| CAT | RNP 0.10 | | RNP 0.30 | |
| | DA(H) | CMV | DA(H) | CMV |
| A | - | - | - | - |
| B | - | - | - | - |
| C | - | 1600 | - | 1800 |
| D | 1276(472) | 1800 | 1564(760) | 2000 |

MINIMA with Missed APCH climb gradient of 2.5% are not established for RNP 0.10.

Authorization Required

CHANGE : Description of VAR.

INSTRUMENT APPROACH CHART

RJOB / OKAYAMA

RNP Z RWY25(AR)

Coding Table

| Serial Number | Path Descriptor | Waypoint Identifier | Fly Over | Course °M(°T) | Magnetic Variation | Distance (NM) | Turn Direction | Altitude (FT) | Speed (KIAS) | VPA/ RDH (°/FT) | RNP Value |
|---------------|-----------------|---------------------|----------|----------------|--------------------|---------------|----------------|---------------|--------------|-----------------|--------------|
| 001 | IF | BENES | - | - | -8.1 | - | - | +4000 | - | - | - |
| 002 | TF | BIKAN | - | 293 (284.5) | -8.1 | 5.0 | - | +3000 | - | - | 1.0 |
| 003 | TF | OB560 | - | 247 (239.2) | -8.1 | 4.0 | - | 3000 | - | - | 1.0 |
| 004 | TF | RW25 | Y | 247 (239.1) | -8.1 | 6.7 | - | 854 | - | -3.00/50 | 0.10 0.30 |
| 005 | TF | OB561 | - | 247 (239.1) | -8.1 | 8.8 | - | - | - | - | 1.0 |
| 006 | TF | OB562 | - | 157 (149.3) | -8.1 | 5.8 | - | - | - | - | 1.0 |
| 007 | TF | OB563 | - | 067 (059.1) | -8.1 | 5.8 | - | - | - | - | 1.0 |
| 008 | TF | BENES | - | 060 (051.6) | -8.1 | 17.4 | - | 4000 | - | - | 1.0 |

Waypoint Coordinates

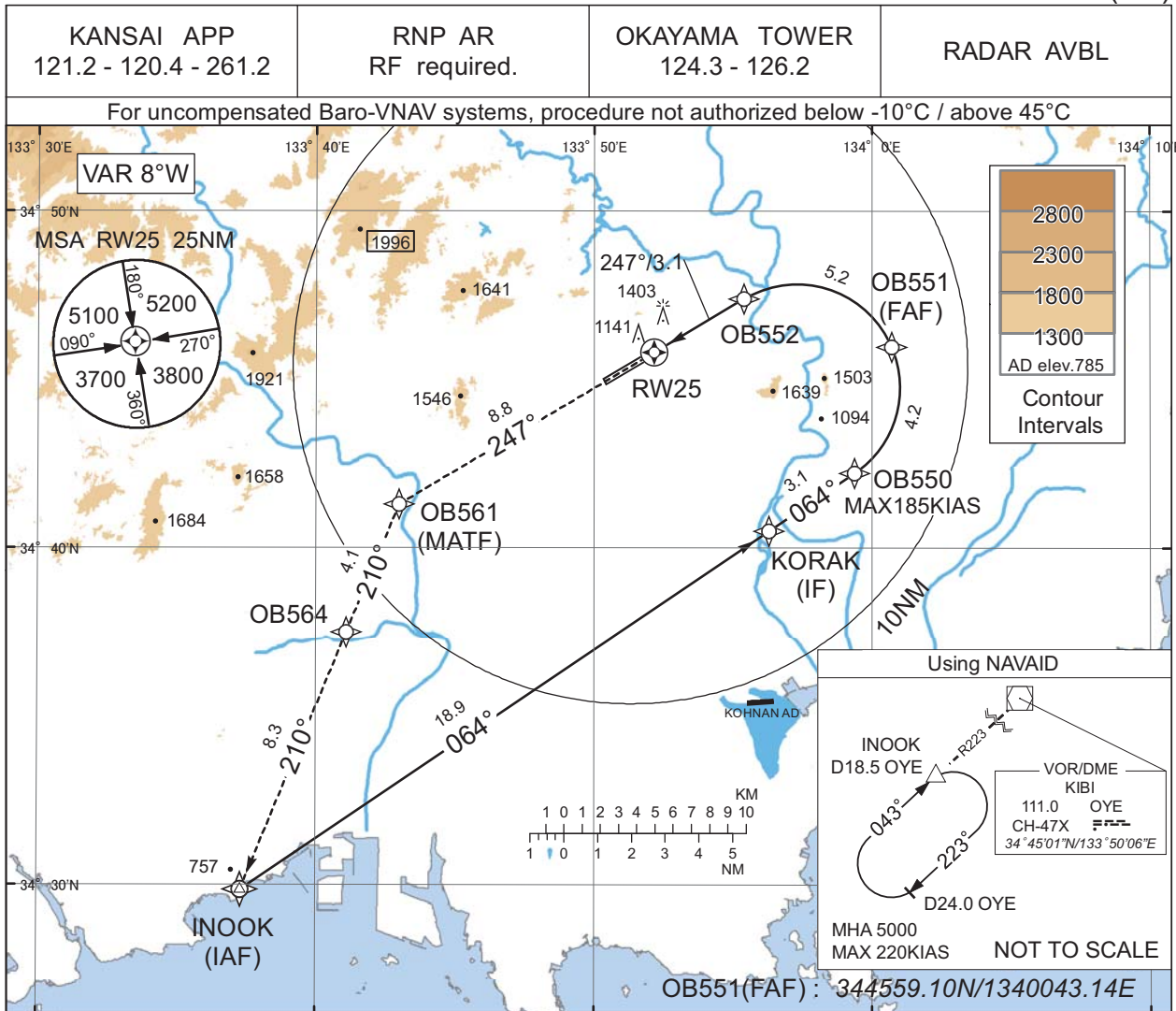
| Waypoint Identifier | Coordinates | RF Arc Center Identifier | Coordinates |
|---------------------|--------------------------|--------------------------|-------------|
| BIKAN | 345119.60N / 1340323.18E | — | — |
| OB560 | 344916.90N / 1335912.35E | | |
| RW25 | 344549.88N / 1335210.24E | | |
| OB561 | 344119.10N / 1334300.25E | | |
| OB562 | 343617.70N / 1334637.94E | | |
| OB563 | 343917.37N / 1335242.76E | | |
| BENES | 345004.35N / 1340919.47E | | |

CHANGE : PROC renamed.

INSTRUMENT APPROACH CHART

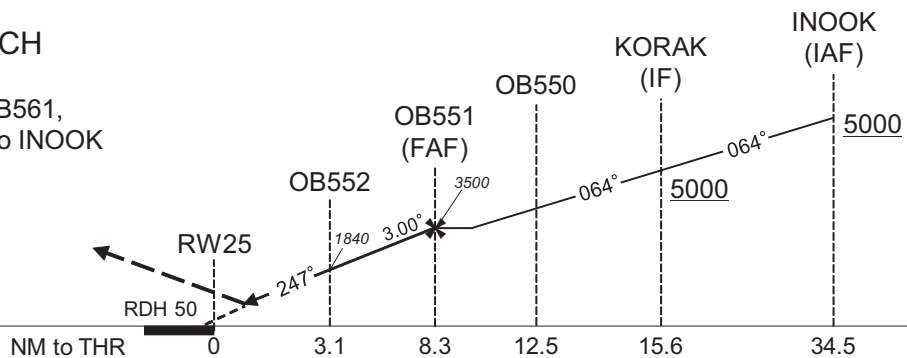
RJOB / OKAYAMA

RNP Y RWY25(AR)



MISSED APPROACH

Climb to 5000FT, to OB561, to OB564 at 5000FT, to INOOK and hold.
Contact KANSAI APP.



Missed APCH climb gradient MNM 5.0% for RNP 0.10

| | | | | |
|-----|---------------|------|--------------|------|
| | THR elev. 804 | | AD elev. 785 | |
| | RNP 0.10 | | RNP 0.30 | |
| CAT | DA(H) | CMV | DA(H) | CMV |
| A | - | - | - | - |
| B | - | - | - | - |
| C | 1276(472) | 1600 | 1564(760) | 1800 |
| D | - | 1800 | - | 2000 |

MINIMA with Missed APCH climb gradient of 2.5% are not established for RNP 0.10.

Authorization Required

CHANGE : Description of VAR.

INSTRUMENT APPROACH CHART

RJOB / OKAYAMA

RNP Y RWY25(AR)

Coding Table

| Serial Number | Path Descriptor | Waypoint Identifier | Fly Over | Course °M(°T) | Magnetic Variation | Distance (NM) | Turn Direction | Altitude (FT) | Speed (KIAS) | VPA/RDH (°/FT) | RNP Value |
|---------------|------------------------------------|---------------------|----------|----------------|--------------------|---------------|----------------|---------------|--------------|----------------|--------------|
| 001 | IF | INOOK | - | - | -8.1 | - | - | +5000 | - | - | - |
| 002 | TF | KORAK | - | 064 (055.7) | -8.1 | 18.9 | - | +5000 | - | - | 1.0 |
| 003 | TF | OB550 | - | 064 (055.8) | -8.1 | 3.1 | - | - | -185 | - | 1.0 |
| 004 | RF Center: OBRF3 r=3.06NM | OB551 | - | - | -8.1 | 4.2 | L | 3500 | - | - | 1.0 |
| 005 | RF Center: OBRF3 r=3.06NM | OB552 | - | - | -8.1 | 5.2 | L | 1840 | - | -3.00 | 0.10 0.30 |
| 006 | TF | RW25 | Y | 247 (239.2) | -8.1 | 3.1 | - | 854 | - | -3.00/50 | 0.10 0.30 |
| 007 | TF | OB561 | - | 247 (239.1) | -8.1 | 8.8 | - | - | - | - | 1.0 |
| 008 | TF | OB564 | - | 210 (202.3) | -8.1 | 4.1 | - | 5000 | - | - | 1.0 |
| 009 | TF | INOOK | - | 210 (202.3) | -8.1 | 8.3 | - | 5000 | - | - | 1.0 |

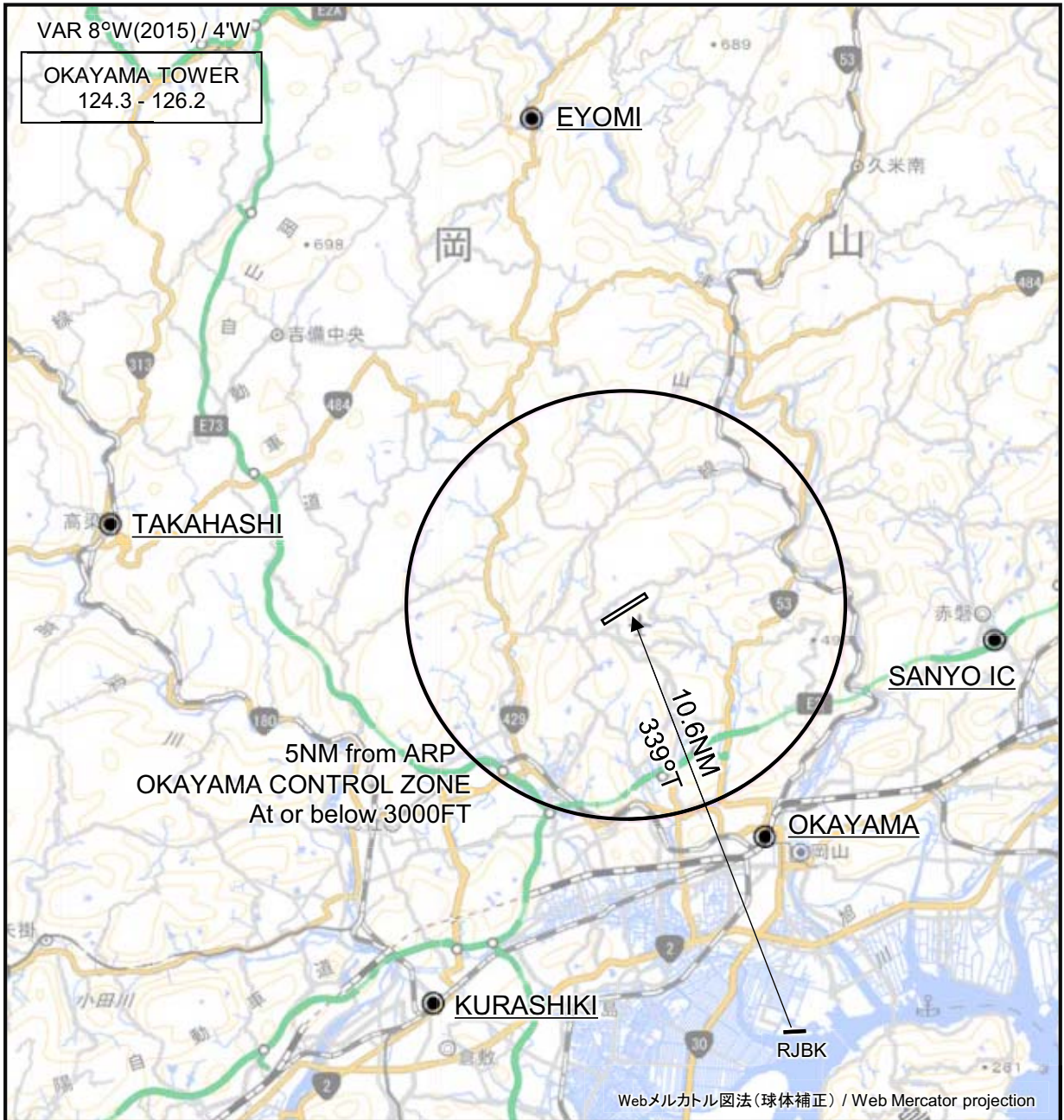
Waypoint Coordinates

| Waypoint Identifier | Coordinates | RF Arc Center Identifier | Coordinates |
|---------------------|--------------------------|--------------------------|--------------------------|
| INOOK | 342952.48N / 1333718.65E | OBRF3 | 344446.88N / 1335718.07E |
| KORAK | 344031.39N / 1335618.17E | | |
| OB550 | 344214.38N / 1335922.79E | | |
| OB551 | 344559.10N / 1340043.14E | | |
| OB552 | 344725.06N / 1335524.13E | | |
| RW25 | 344549.88N / 1335210.24E | | |
| OB561 | 344119.10N / 1334300.25E | | |
| OB564 | 343730.82N / 1334106.50E | | |

CHANGE : PROC renamed.

RJOB / OKAYAMA

Visual REP



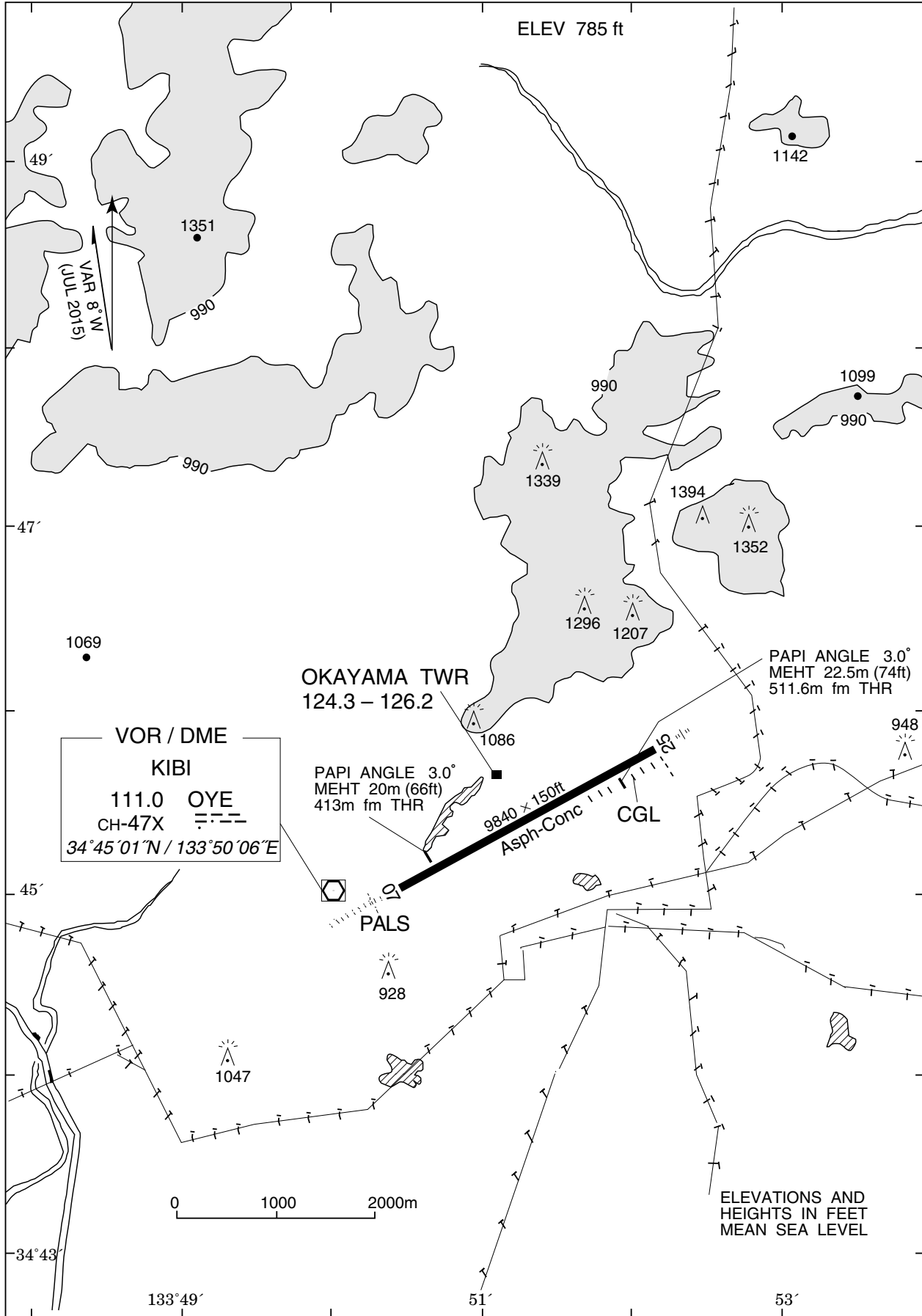
CHANGE : Map updated. BRG/DIST from ARP. Location indicator of Kohnan AD added.

※図中に標高を示す数字がある場合、単位はメートル(m)である。The unit of measurement used to express elevation is meter(m).

| Call sign | BRG / DIST from ARP | Remarks |
|------------------|---------------------|---|
| 江与味 Eyomi | 349°T / 11.6NM | 江与味橋 Bridge |
| 高梁 Takahashi | 279°T / 12.0NM | JR駅 JR Station |
| 倉敷 Kurashiki | 205°T / 10.3NM | JR駅 JR Station |
| 岡山 Okayama | 150°T / 6.2NM | JR駅 JR Station |
| 山陽IC Sanyo IC | 096°T / 8.4NM | 山陽インターチェンジ Sanyo Highway Interchange |

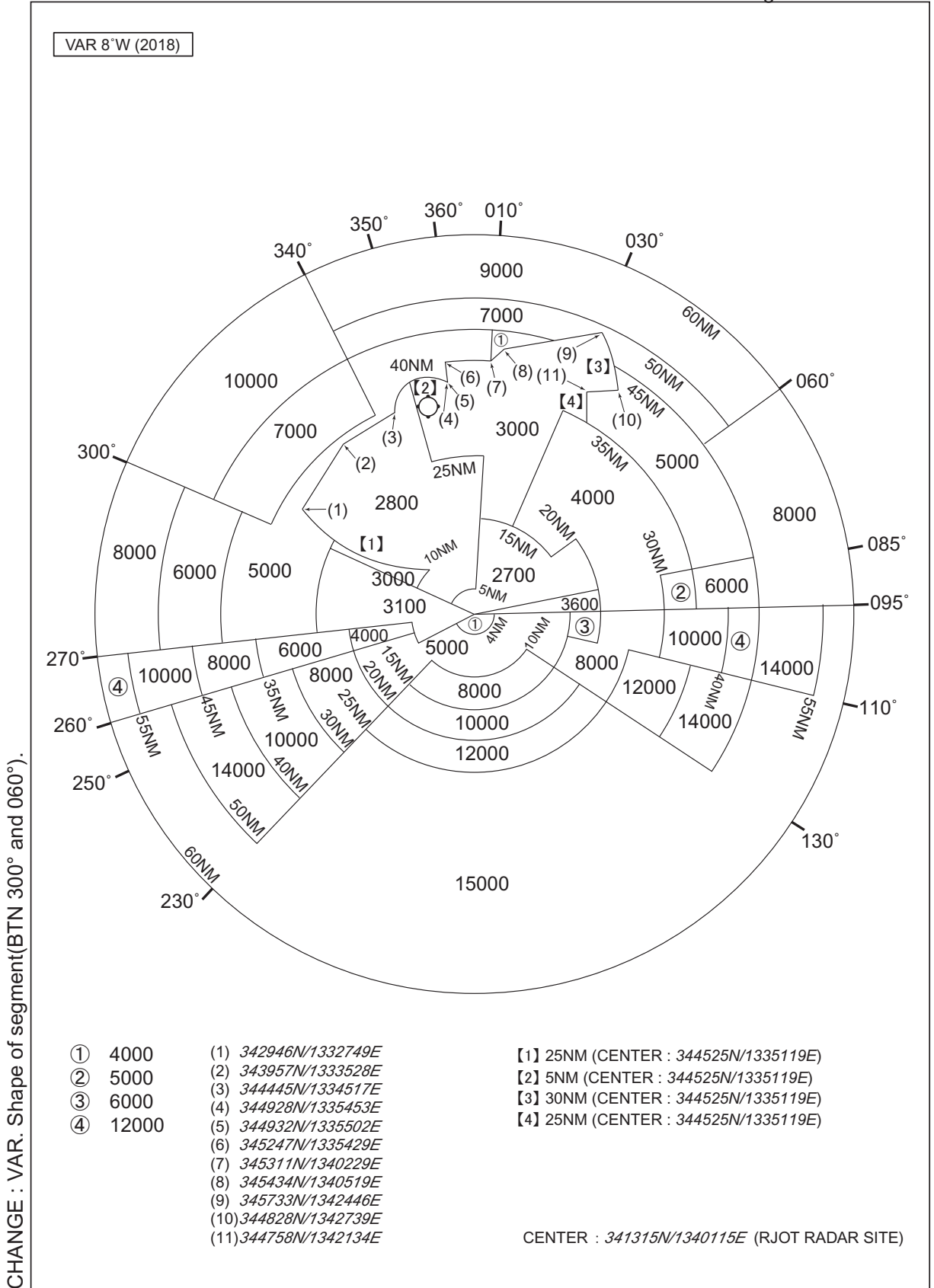
RJOB / OKAYAMA

LDG CHART



RJOB / OKAYAMA

Minimum Vectoring Altitude CHART



INTENTIONALLY LEFT BLANK