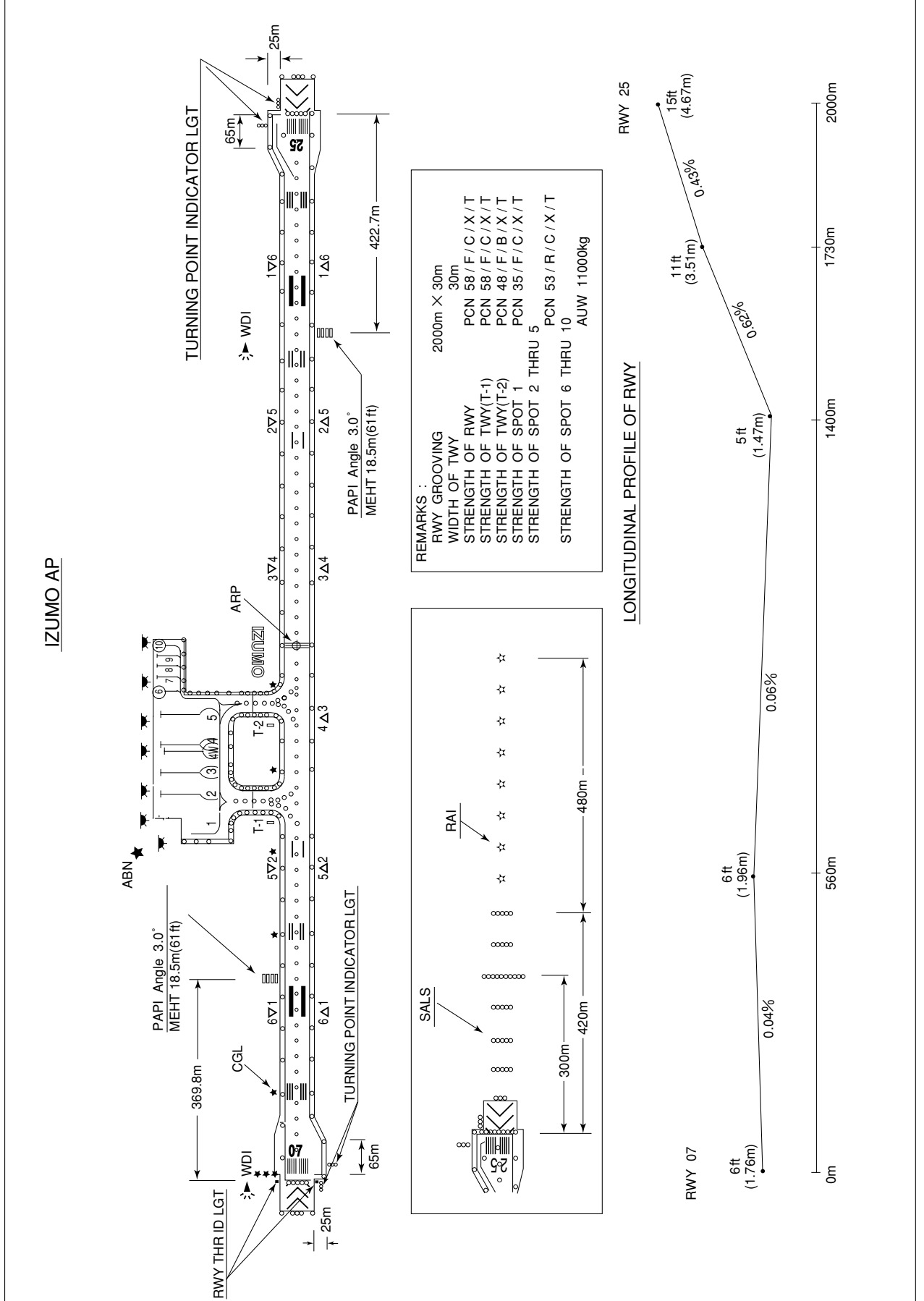


RJOC / IZUMO

AD CHART



STANDARD DEPARTURE CHART -INSTRUMENT

RJOC / IZUMO

SID

DOZEN FIVE DEPARTURE

RWY07 : Climb RWY HDG to 500FT, turn left ...

RWY25 : Climb RWY HDG to 1700FT, turn right HDG077° ...

... to intercept and proceed via XZE R032 to XZE 20.0DME(OIE 30.2DME),
via OIE R213 to DOZEN.

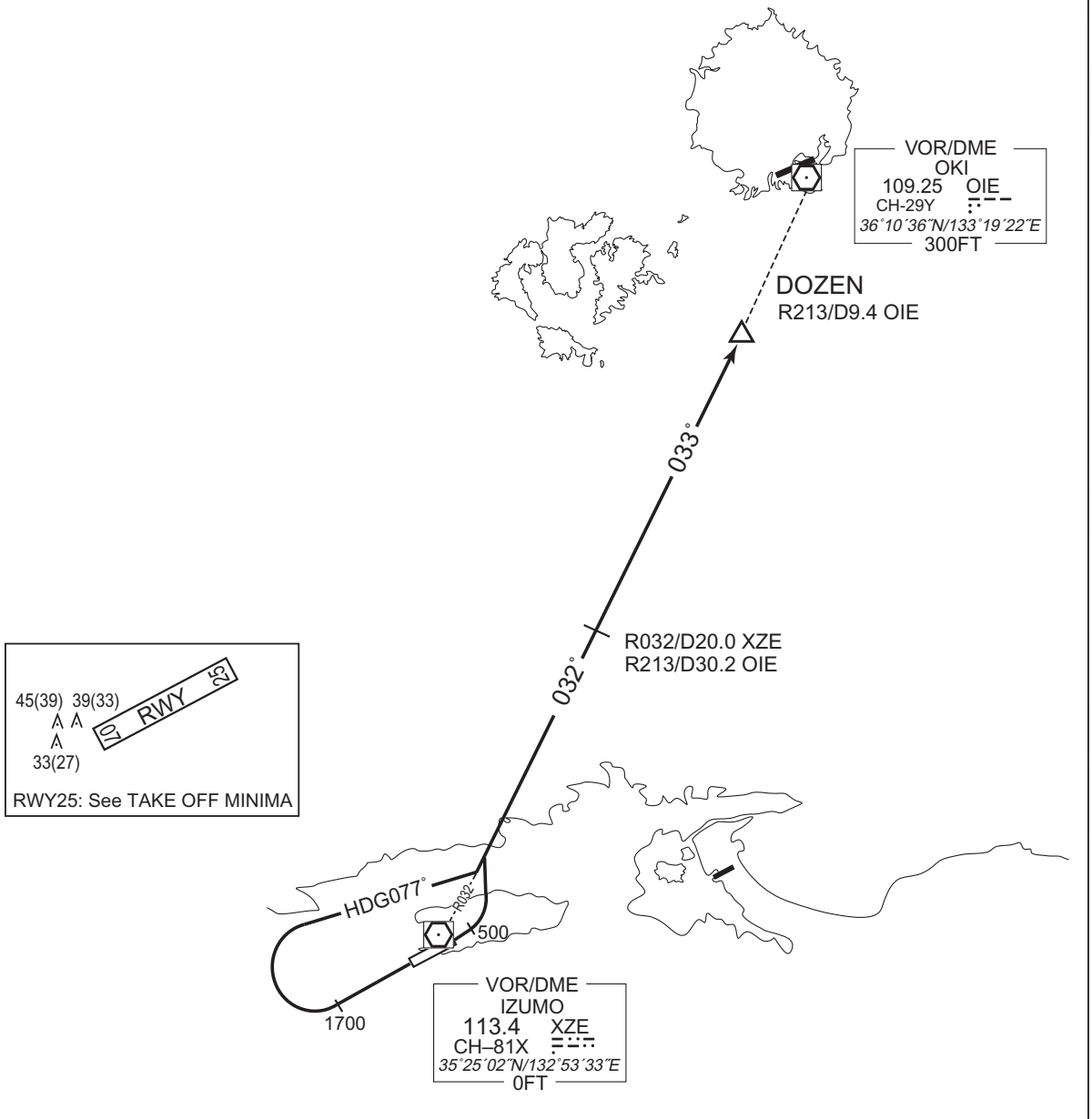
Note RWY07: 4.6% climb gradient required up to 1300FT.

OBST ALT 1074FT located at 4.8NM 029° FM end of RWY07.

RWY25: 4.7% climb gradient required up to 2200FT.

OBST ALT 1838FT located at 6.3NM 280° FM end of RWY25.

CHANGE : PROC renamed. Course FM XZE to DOZEN. PROC course. ALT restriction at DOZEN abolished.



STANDARD DEPARTURE CHART -INSTRUMENT

RJOC / IZUMO

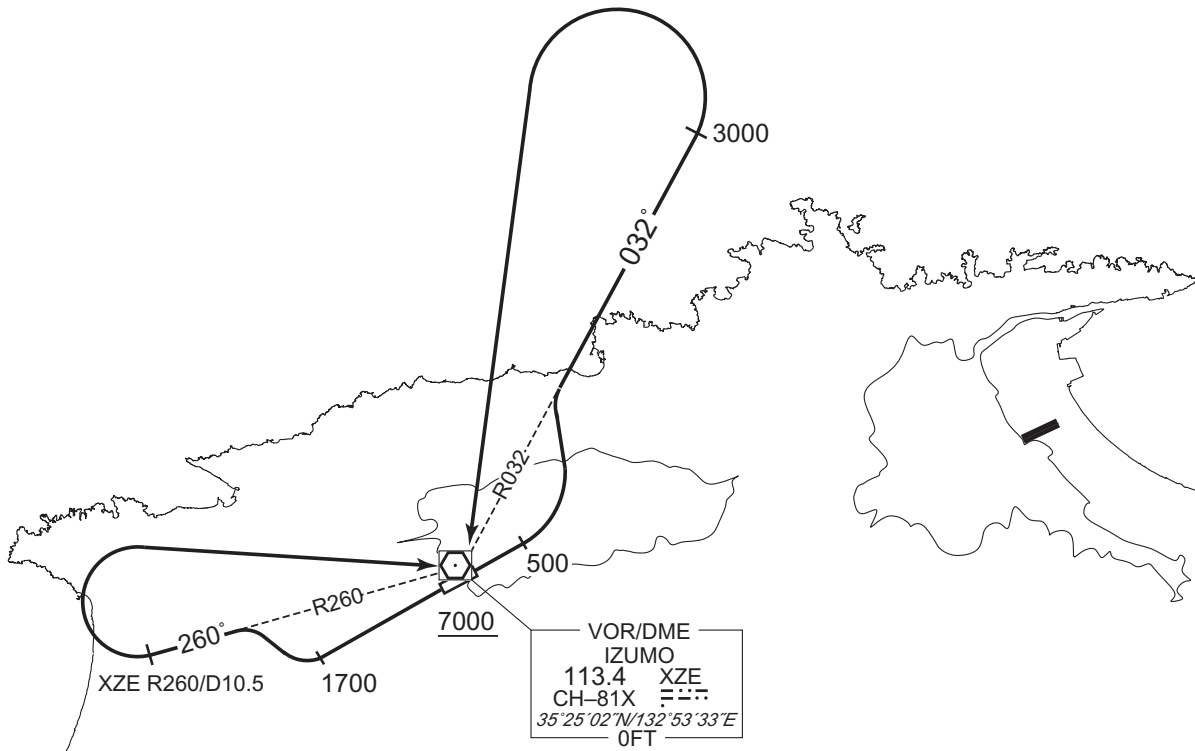
SID

IZUMO REVERSAL FOUR DEPARTURE

- RWY07 : Climb RWY HDG to 500FT, turn left to intercept and proceed via XZE R032 to 3000FT, turn left direct to XZE VOR/DME. Cross XZE VOR/DME at or above 7000FT.
- RWY25 : Climb RWY HDG to 1700FT, turn right to intercept and proceed via XZE R260 to XZE 10.5DME, turn right direct to XZE VOR/DME. Cross XZE VOR/DME at or above 7000FT.

Note RWY07: 4.6% climb gradient required up to 1300FT.
 OBST ALT 1074FT located at 4.8NM 029° FM end of RWY07.

RWY25: 4.7% climb gradient required up to 2200FT.
 OBST ALT 1838FT located at 6.3NM 280° FM end of RWY25.



CHANGE : Note.

45(39)	39(33)
A	A
A	
33(27)	

RWY 07

RWY25: See TAKE OFF MINIMA

STANDARD DEPARTURE CHART - INSTRUMENT

RJOC / IZUMO

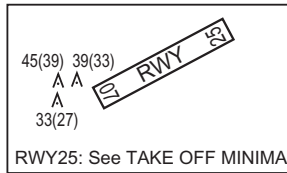
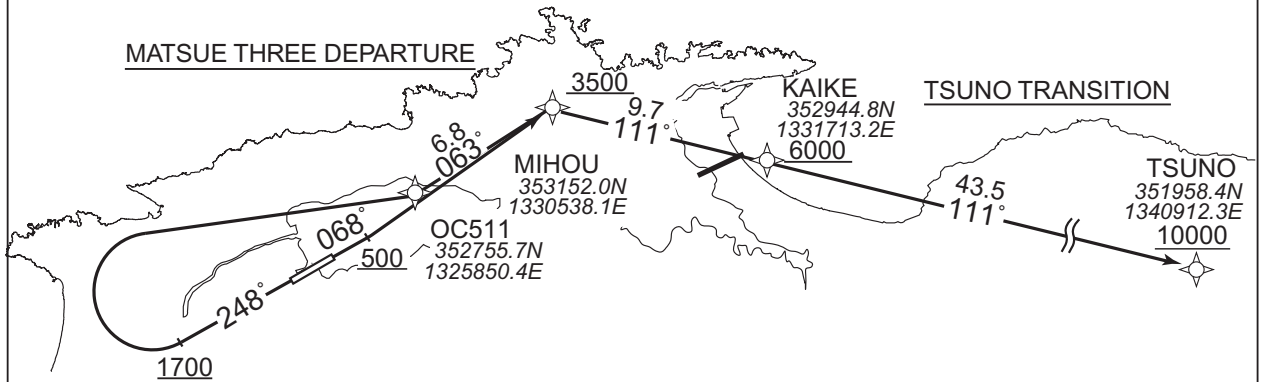
RNAV SID and TRANSITION

MATSUE THREE DEPARTURE
TSUNO TRANSITION

RNP1

Note GNSS required.

VAR 9°W



CHANGE : VAR. PROC renamed. PROC course.

MATSUE THREE DEPARTURE

RWY07 : Climb on HDG068° at or above 500FT, direct to MIHOU at or above 3500FT.

RWY25 : Climb on HDG248° at or above 1700FT, turn right direct to OC511, to MIHOU at or above 3500FT.

NOTE RWY07 : 3.5% climb gradient required up to 1300FT.

OBST ALT 1739FT located at 10.9NM 059° FM end of RWY07.

RWY25 : 4.7% climb gradient required up to 2200FT.

OBST ALT 1838FT located at 6.3NM 280° FM end of RWY25.

TSUNO TRANSITION

From MIHOU, to KAIKE at or above 6000FT, to TSUNO at or above 10000FT.

STANDARD DEPARTURE CHART - INSTRUMENT

RJOC / IZUMO

RNAV SID and TRANSITION

MATSUE THREE DEPARTURE

RWY07

Serial Number	Path Descriptor	Waypoint Identifier	Fly Over	Course °M(°T)	Magnetic Variation	Distance (NM)	Turn Direction	Altitude (FT)	Speed (KIAS)	Vertical Angle	Navigation Specification
001	VA	-	-	068 (059.3)	-8.6	-	-	+500	-	-	RNP1
002	DF	MIHOU	-	-	-8.6	-	-	+3500	-	-	RNP1

RWY25

Serial Number	Path Descriptor	Waypoint Identifier	Fly Over	Course °M(°T)	Magnetic Variation	Distance (NM)	Turn Direction	Altitude (FT)	Speed (KIAS)	Vertical Angle	Navigation Specification
001	VA	-	-	248 (239.3)	-8.6	-	-	+1700	-	-	RNP1
002	DF	OC511	-	-	-8.6	-	R	-	-	-	RNP1
003	TF	MIHOU	-	063 (054.5)	-8.6	6.8	-	+3500	-	-	RNP1

TSUNO TRANSITION

Serial Number	Path Descriptor	Waypoint Identifier	Fly Over	Course °M(°T)	Magnetic Variation	Distance (NM)	Turn Direction	Altitude (FT)	Speed (KIAS)	Vertical Angle	Navigation Specification
001	IF	MIHOU	-	-	-8.6	-	-	+3500	-	-	RNP1
002	TF	KAIKE	-	111 (102.6)	-8.6	9.7	-	+6000	-	-	RNP1
003	TF	TSUNO	-	111 (102.7)	-8.6	43.5	-	+10000	-	-	RNP1

CHANGE : PROC renamed. PROC course. VAR.

STANDARD DEPARTURE CHART - INSTRUMENT

RJOC / IZUMO

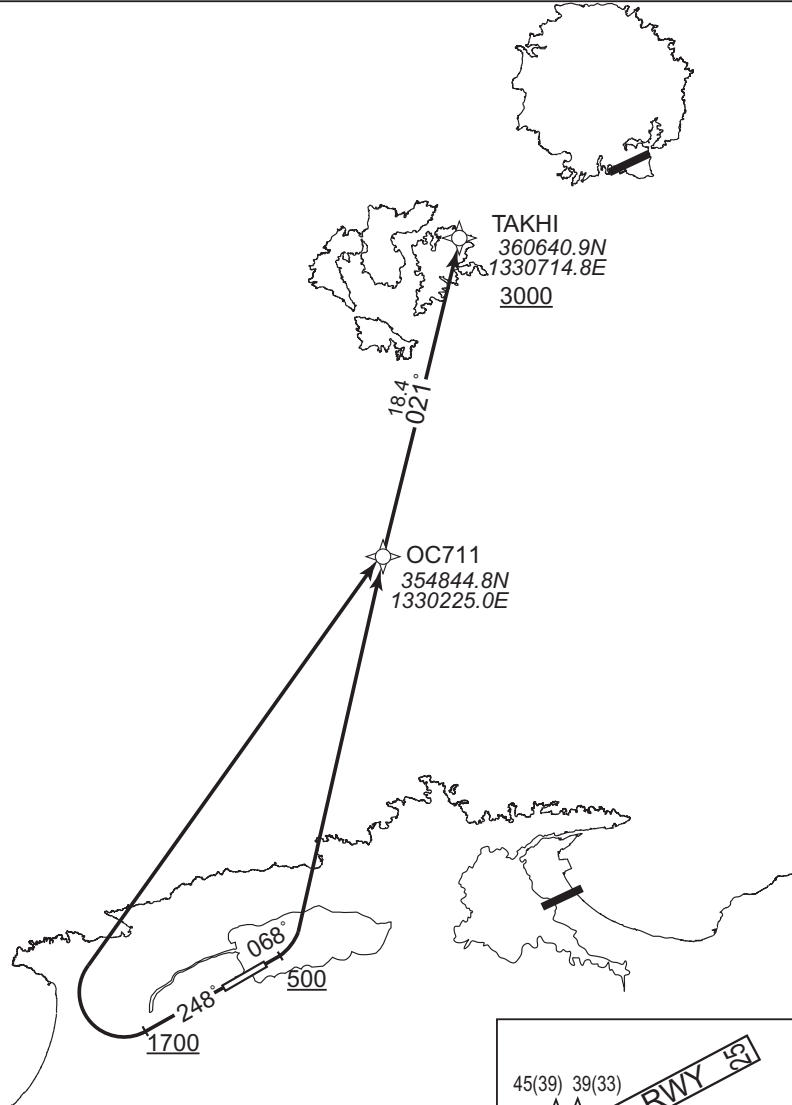
RNAV SID

TAKHI TWO DEPARTURE

RNP1

Note GNSS required.

VAR 9°W



45(39) 39(33)
A A
A
33(27)
RWY 25
RWY25: See TAKE OFF MINIMA

CHANGE : PROC renamed. PROC course. VAR.

RWY07 : Climb on HDG068° at or above 500FT, turn left direct to OC711, to TAKHI at or above 3000FT.

RWY25 : Climb on HDG248° at or above 1700FT, turn right direct to OC711, to TAKHI at or above 3000FT.

NOTE RWY07 : 4.6% climb gradient required up to 1300FT.

OBST ALT 1074FT located at 4.8NM 029° FM end of RWY07.

RWY25 : 4.7% climb gradient required up to 2200FT.

OBST ALT 1838FT located at 6.3NM 280° FM end of RWY25.

STANDARD DEPARTURE CHART - INSTRUMENT

RJOC / IZUMO

RNAV SID

TAKHI TWO DEPARTURE

RWY07

Serial Number	Path Descriptor	Waypoint Identifier	Fly Over	Course °M(°T)	Magnetic Variation	Distance (NM)	Turn Direction	Altitude (FT)	Speed (KIAS)	Vertical Angle	Navigation Specification
001	VA	-	-	068 (059.3)	-8.6	-	-	+500	-	-	RNP1
002	DF	OC711	-	-	-8.6	-	L	-	-	-	RNP1
003	TF	TAKHI	-	021 (012.3)	-8.6	18.4	-	+3000	-	-	RNP1

RWY25

Serial Number	Path Descriptor	Waypoint Identifier	Fly Over	Course °M(°T)	Magnetic Variation	Distance (NM)	Turn Direction	Altitude (FT)	Speed (KIAS)	Vertical Angle	Navigation Specification
001	VA	-	-	248 (239.3)	-8.6	-	-	+1700	-	-	RNP1
002	DF	OC711	-	-	-8.6	-	R	-	-	-	RNP1
003	TF	TAKHI	-	021 (012.3)	-8.6	18.4	-	+3000	-	-	RNP1

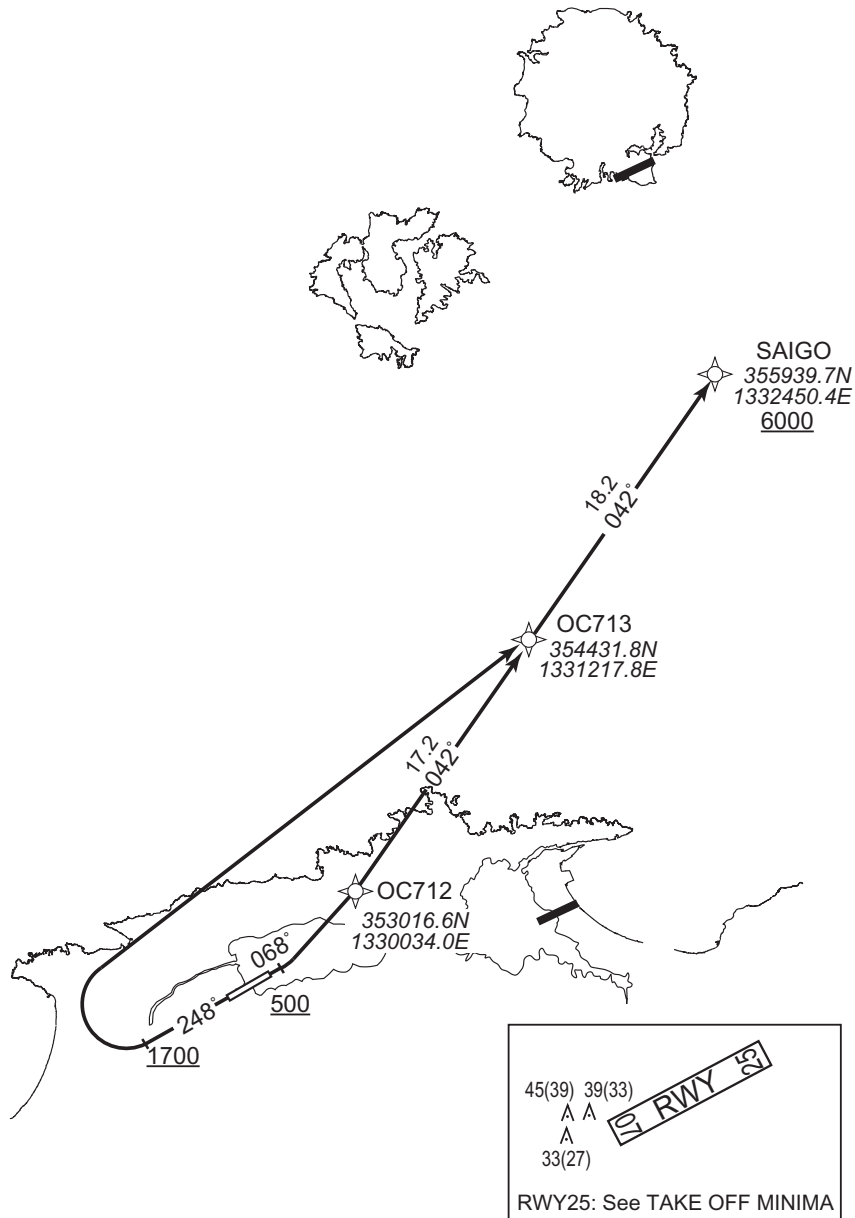
CHANGE : PROC renamed. PROC course. VAR.

STANDARD DEPARTURE CHART - INSTRUMENT

RJOC / IZUMO	RNAV SID
SAIGO TWO DEPARTURE	RNP1

Note GNSS required.

VAR 9°W



CHANGE : PROC renamed. PROC course. VAR.

RWY07 : Climb on HDG068° at or above 500FT, turn left direct to OC712, to OC713, to SAIGO at or above 6000FT.

RWY25 : Climb on HDG248° at or above 1700FT, turn right direct to OC713, to SAIGO at or above 6000FT.

- NOTE
- RWY07 : 4.6% climb gradient required up to 800FT.
OBST ALT 1214FT located at 6.8NM 045° FM end of RWY07.
 - RWY25 : 4.7% climb gradient required up to 2200FT.
OBST ALT 1838FT located at 6.3NM 280° FM end of RWY25.

STANDARD DEPARTURE CHART - INSTRUMENT

RJOC / IZUMO

RNAV SID

SAIGO TWO DEPARTURE

RWY07

Serial Number	Path Descriptor	Waypoint Identifier	Fly Over	Course °M(°T)	Magnetic Variation	Distance (NM)	Turn Direction	Altitude (FT)	Speed (KIAS)	Vertical Angle	Navigation Specification
001	VA	-	-	068 (059.3)	-8.6	-	-	+500	-	-	RNP1
002	DF	OC712	-	-	-8.6	-	L	-	-	-	RNP1
003	TF	OC713	-	042 (033.7)	-8.6	17.2	-	-	-	-	RNP1
004	TF	SAIGO	-	042 (033.8)	-8.6	18.2	-	+6000	-	-	RNP1

RWY25

Serial Number	Path Descriptor	Waypoint Identifier	Fly Over	Course °M(°T)	Magnetic Variation	Distance (NM)	Turn Direction	Altitude (FT)	Speed (KIAS)	Vertical Angle	Navigation Specification
001	VA	-	-	248 (239.3)	-8.6	-	-	+1700	-	-	RNP1
002	DF	OC713	-	-	-8.6	-	R	-	-	-	RNP1
003	TF	SAIGO	-	042 (033.8)	-8.6	18.2	-	+6000	-	-	RNP1

CHANGE : PROC renamed. PROC course. VAR.

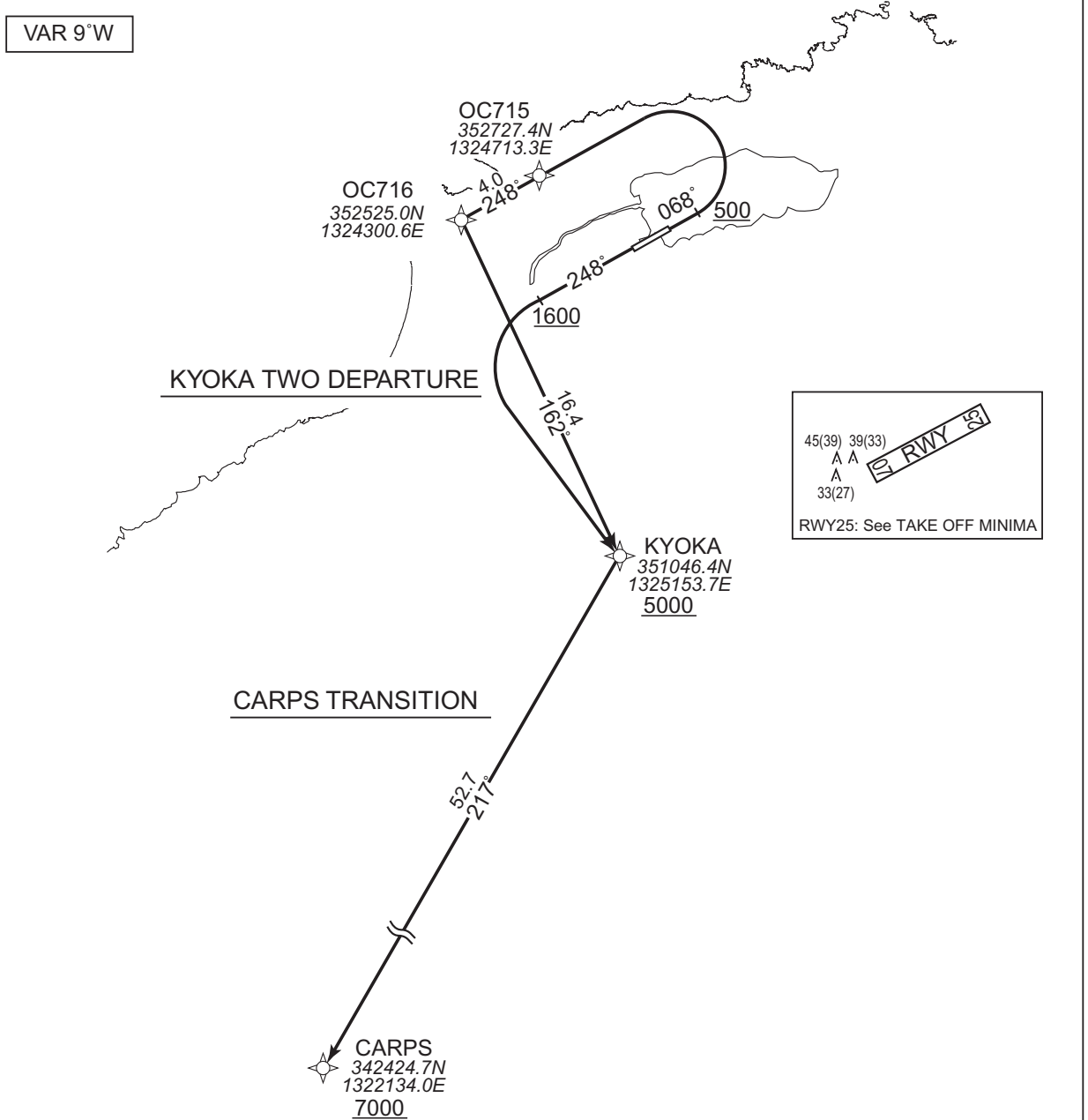
STANDARD DEPARTURE CHART - INSTRUMENT

RJOC / IZUMO

RNAV SID and TRANSITION

KYOKA TWO DEPARTURE CARPS TRANSITION	RNP1
---	------

Note GNSS required.



CHANGE : PROC renamed. PROC course. VAR.

<p>KYOKA TWO DEPARTURE</p> <p>RWY07 : Climb on HDG068° at or above 500FT, turn left direct to OC715, to OC716, to KYOKA at or above 5000FT.</p> <p>RWY25 : Climb on HDG248° at or above 1600FT, turn left direct to KYOKA at or above 5000FT.</p> <p>NOTE RWY07 : 4.6% climb gradient required up to 1800FT. OBST ALT 1739FT located at 6.3NM 281° FM end of RWY07.</p> <p>RWY25 : 3.8% climb gradient required up to 2400FT. OBST ALT 1969FT located at 10.8NM 223° FM end of RWY25.</p>
<p>CARPS TRANSITION</p> <p>From KYOKA, to CARPS at or above 7000FT.</p>

STANDARD DEPARTURE CHART - INSTRUMENT

RJOC / IZUMO

RNAV SID and TRANSITION

KYOKA TWO DEPARTURE

RWY07

Serial Number	Path Descriptor	Waypoint Identifier	Fly Over	Course °M(°T)	Magnetic Variation	Distance (NM)	Turn Direction	Altitude (FT)	Speed (KIAS)	Vertical Angle	Navigation Specification
001	VA	-	-	068 (059.3)	-8.6	-	-	+500	-	-	RNP1
002	DF	OC715	-	-	-8.6	-	L	-	-	-	RNP1
003	TF	OC716	-	248 (239.3)	-8.6	4.0	-	-	-	-	RNP1
004	TF	KYOKA	-	162 (153.6)	-8.6	16.4	-	+5000	-	-	RNP1

RWY25

Serial Number	Path Descriptor	Waypoint Identifier	Fly Over	Course °M(°T)	Magnetic Variation	Distance (NM)	Turn Direction	Altitude (FT)	Speed (KIAS)	Vertical Angle	Navigation Specification
001	VA	-	-	248 (239.3)	-8.6	-	-	+1600	-	-	RNP1
002	DF	KYOKA	-	-	-8.6	-	L	+5000	-	-	RNP1

CARPS TRANSITION

Serial Number	Path Descriptor	Waypoint Identifier	Fly Over	Course °M(°T)	Magnetic Variation	Distance (NM)	Turn Direction	Altitude (FT)	Speed (KIAS)	Vertical Angle	Navigation Specification
001	IF	KYOKA	-	-	-8.6	-	-	+5000	-	-	RNP1
002	TF	CARPS	-	217 (208.4)	-8.6	52.7	-	+7000	-	-	RNP1

CHANGE : PROC renamed. PROC course. VAR.

STANDARD ARRIVAL CHART - INSTRUMENT

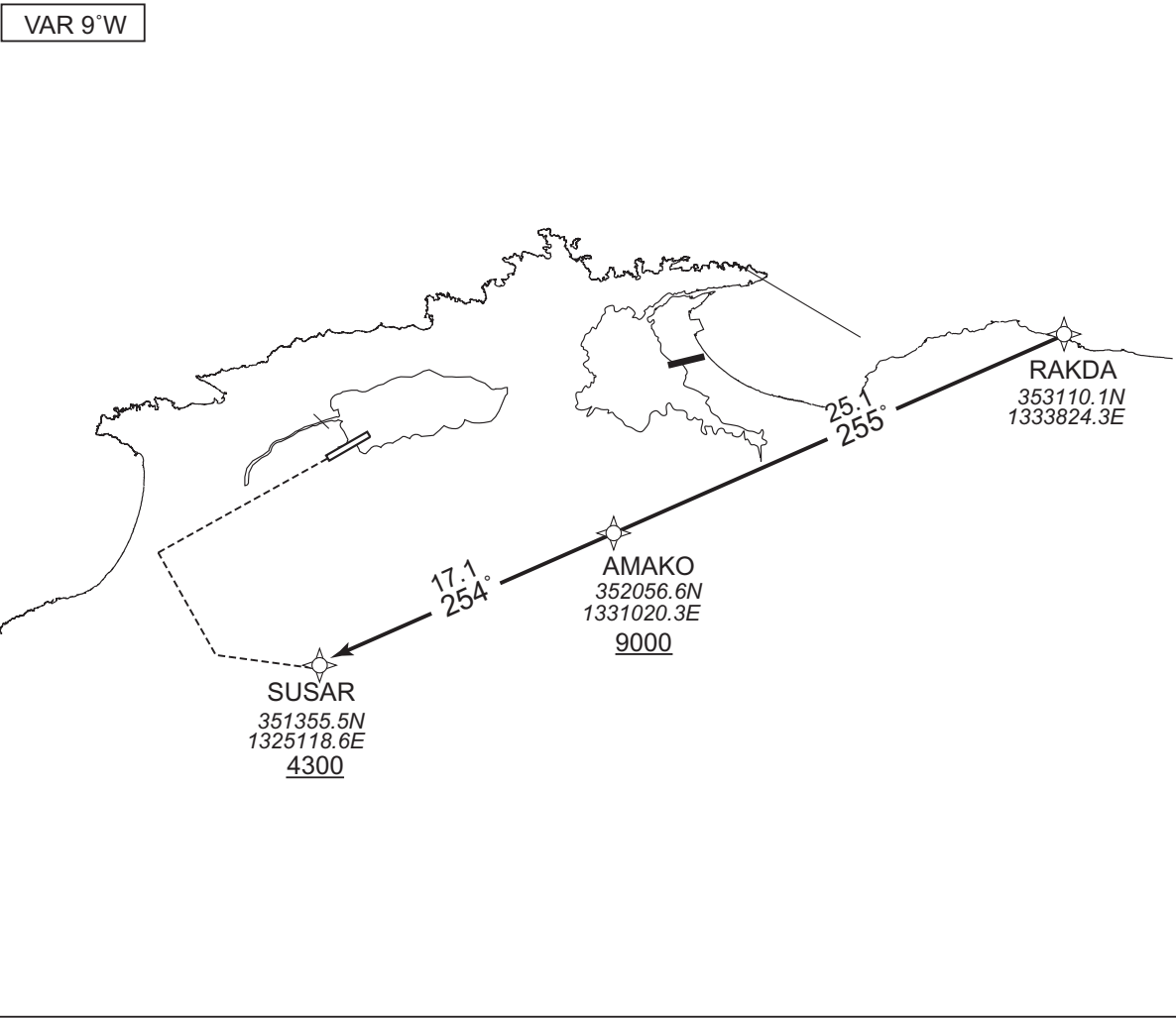
RJOC / IZUMO

RNAV STAR RWY07

SUSAR ARRIVAL

RNP1

Note GNSS required.



From RAKDA, to AMAKO at or above 9000FT, to SUSAR at or above 4300FT.

Serial Number	Path Descriptor	Waypoint Identifier	Fly Over	Course °M(°T)	Magnetic Variation	Distance (NM)	Turn Direction	Altitude (FT)	Speed (KIAS)	Vertical Angle	Navigation Specification
001	IF	RAKDA	-	-	-8.6	-	-	-	-	-	RNP1
002	TF	AMAKO	-	255 (246.0)	-8.6	25.1	-	+9000	-	-	RNP1
003	TF	SUSAR	-	254 (245.8)	-8.6	17.1	-	+4300	-	-	RNP1

CHANGE : PROC course. VAR.

STANDARD ARRIVAL CHART - INSTRUMENT

RJOC / IZUMO

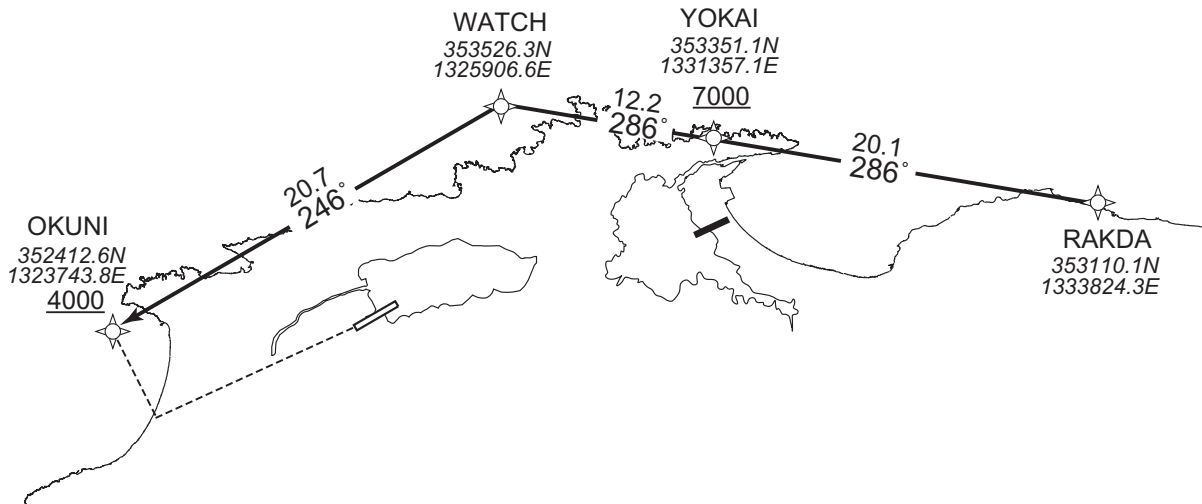
RNAV STAR RWY07

OKUNI ARRIVAL

RNP1

Note GNSS required.

VAR 9°W



From RAKDA, to YOKAI at or above 7000FT, to WATCH, to OKUNI at or above 4000FT.

Serial Number	Path Descriptor	Waypoint Identifier	Fly Over	Course °M(°T)	Magnetic Variation	Distance (NM)	Turn Direction	Altitude (FT)	Speed (KIAS)	Vertical Angle	Navigation Specification
001	IF	RAKDA	-	-	-8.6	-	-	-	-	-	RNP1
002	TF	YOKAI	-	286 (277.8)	-8.6	20.1	-	+7000	-	-	RNP1
003	TF	WATCH	-	286 (277.6)	-8.6	12.2	-	-	-	-	RNP1
004	TF	OKUNI	-	246 (237.3)	-8.6	20.7	-	+4000	-	-	RNP1

CHANGE : PROC course. VAR.

STANDARD ARRIVAL CHART - INSTRUMENT

RJOC / IZUMO

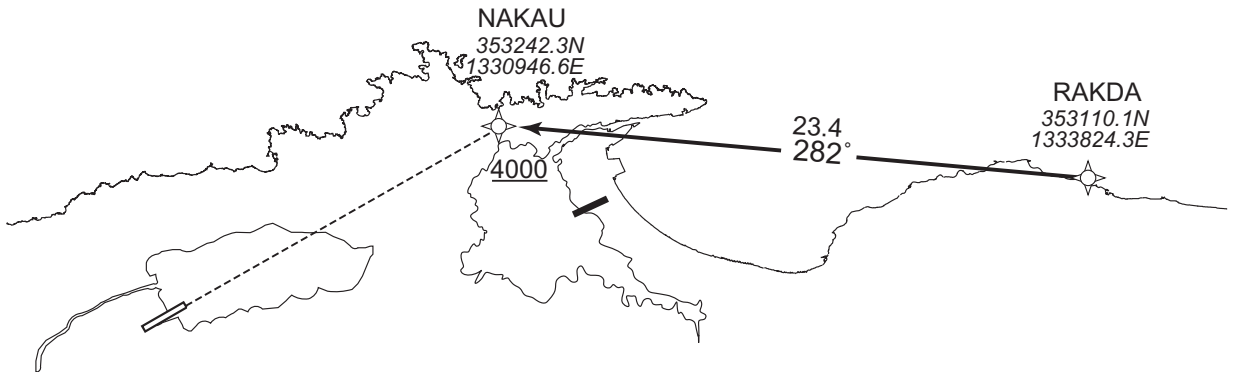
RNAV STAR RWY25

NAKAU ARRIVAL

RNP1

Note GNSS required.

VAR 9°W



From RAKDA, to NAKAU at or above 4000FT.

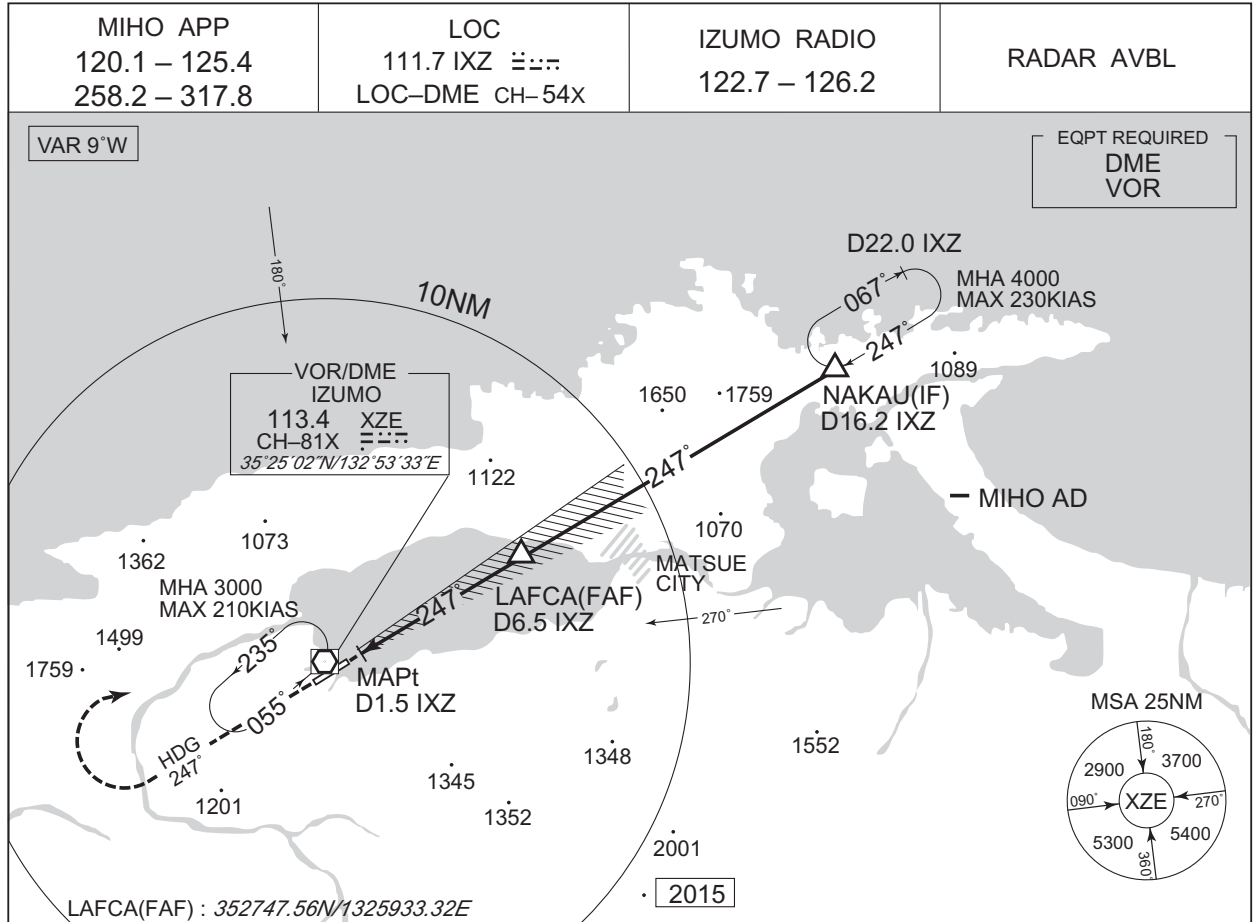
Serial Number	Path Descriptor	Waypoint Identifier	Fly Over	Course °M(°T)	Magnetic Variation	Distance (NM)	Turn Direction	Altitude (FT)	Speed (KIAS)	Vertical Angle	Navigation Specification
001	IF	RAKDA	-	-	-8.6	-	-	-	-	-	RNP1
002	TF	NAKAU	-	282 (273.9)	-8.6	23.4	-	+4000	-	-	RNP1

CHANGE : VAR.

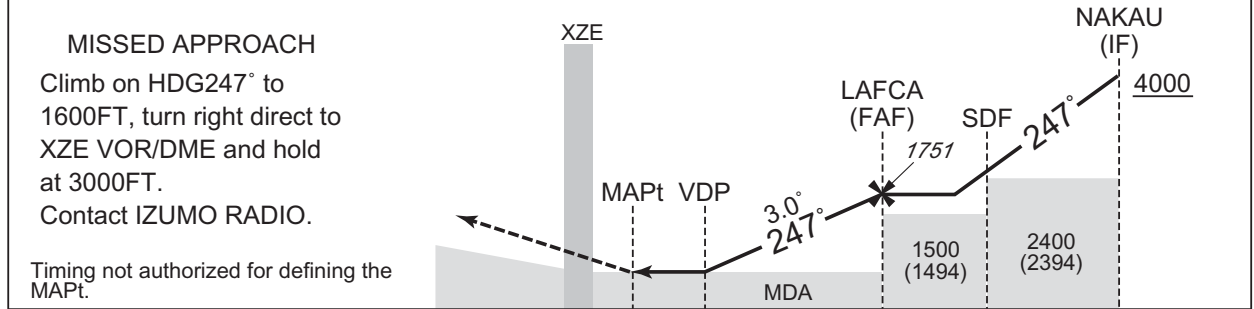
INSTRUMENT APPROACH CHART

RJOC / IZUMO

LOC Z RWY25



	NM to IXZ	MAPt	2	3	4	5	6	FAF
	ALT (3.0° APCH Path)	-	317	635	954	1272	1591	1751



DME to IXZ	1.2	1.5	1.9	6.5	10.1	16.2
NM to THR	0	0.3	0.6	5.3	9.0	15.0

Missed APCH climb gradient MNM 5.0%

MINIMA		THR elev. 15	AD elev. 6	
CAT			CIRCLING	
	MDA(H)	CMV	MDA(H)	VIS
A	270 (264)	800	390 (384)	1600
B			460 (454)	
C			560 (554)	2400
D			1200	630 (624)

CHANGE : VAR.

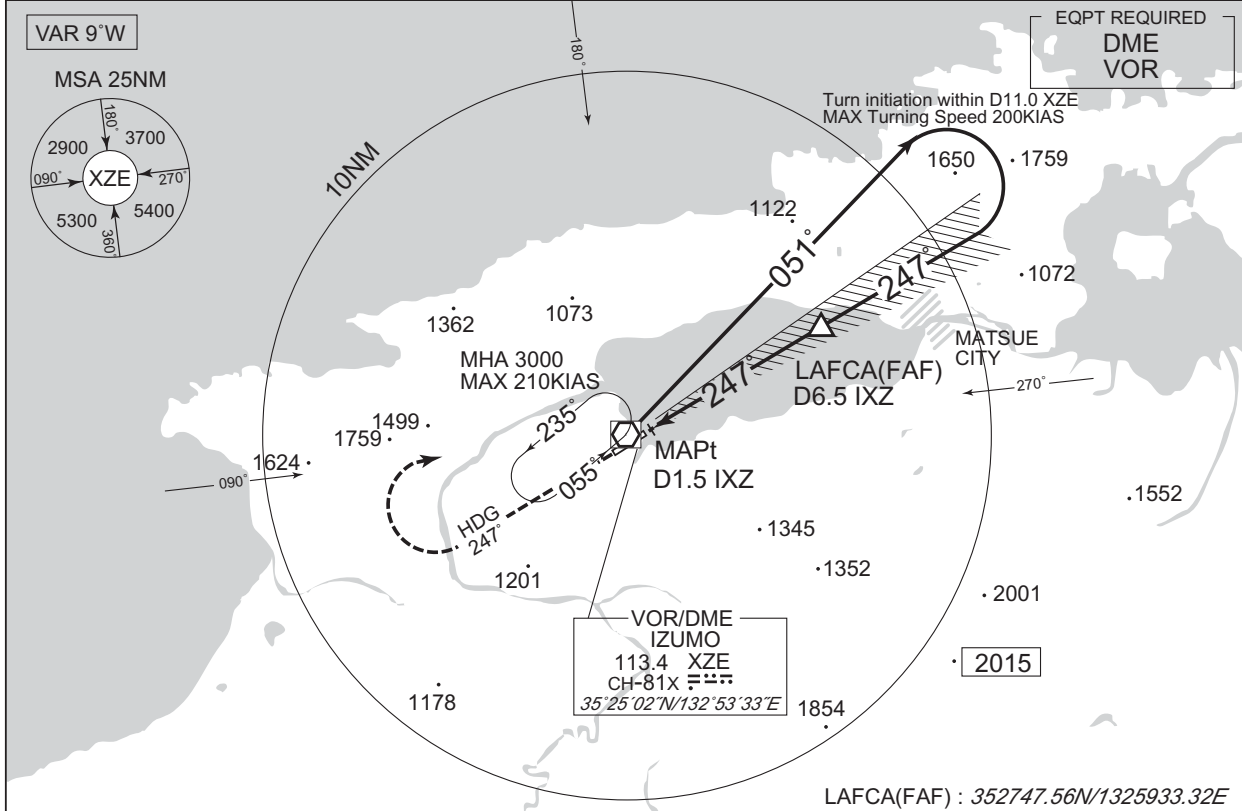
Circling to NORTH side of RWY only.
MINIMA with Missed APCH climb gradient of 2.5% are not established.

INSTRUMENT APPROACH CHART

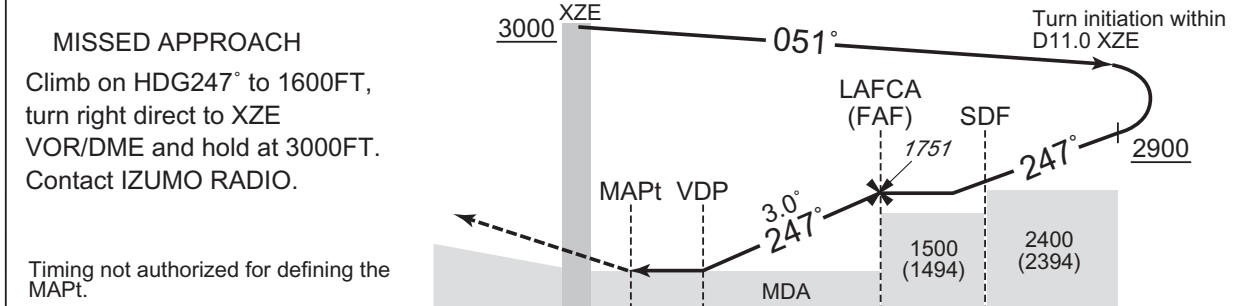
RJOC / IZUMO

LOC Y RWY25

MIHO APP 120.1 – 125.4 258.2 – 317.8	LOC 111.7 IXZ LOC-DME CH-54X	IZUMO RADIO 122.7 – 126.2	RADAR AVBL
--	------------------------------------	------------------------------	------------



NM to IXZ	MAPt	2	3	4	5	6	FAF
ALT (3.0° APCH Path)	-	317	635	954	1272	1591	1751



DME to IXZ	1.2	1.5	1.9	6.5	10.1
NM to THR	0	0.3	0.6	5.3	9.0

Missed APCH climb gradient MNM 5.0%

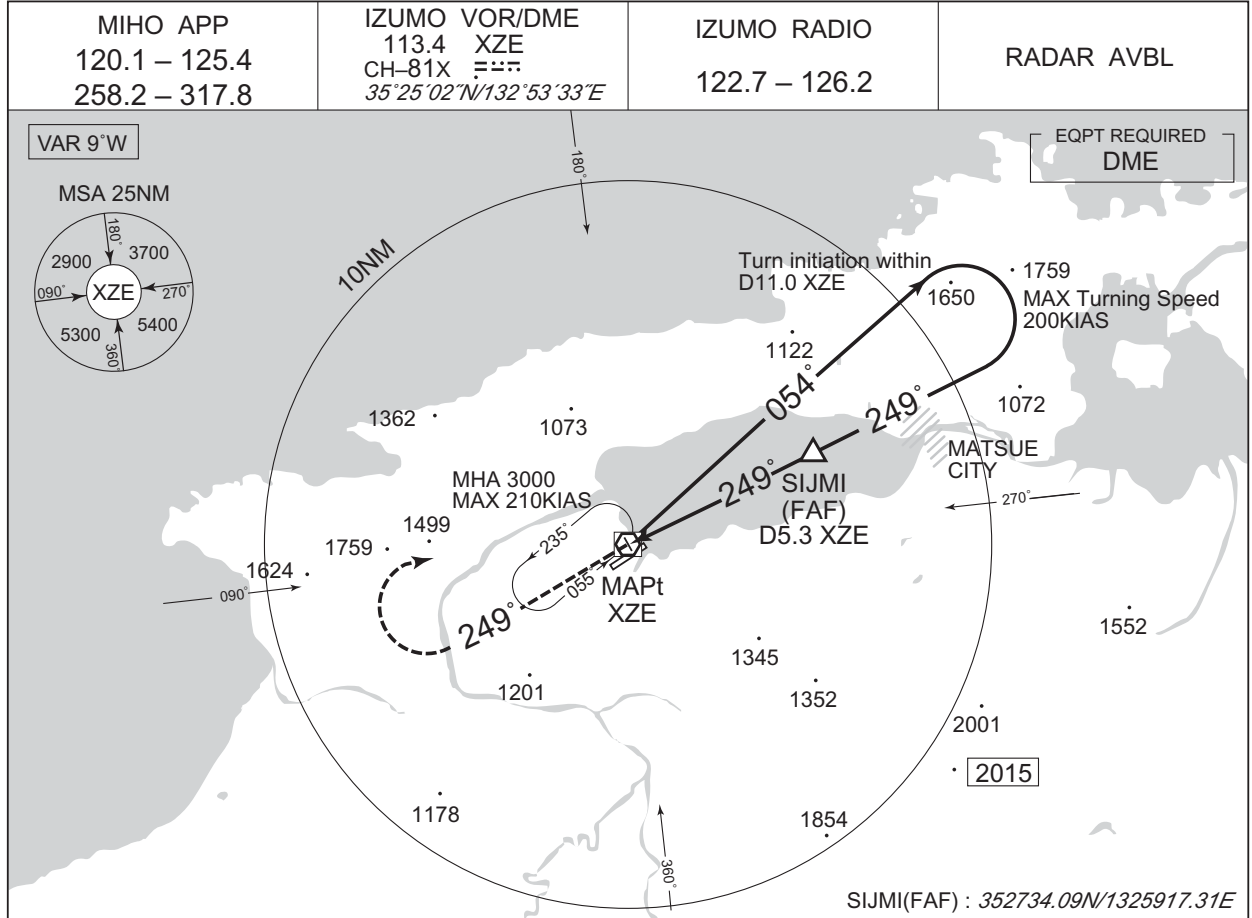
MINIMA		THR elev. 15	AD elev. 6	
CAT			CIRCLING	
	MDA(H)	CMV	MDA(H)	VIS
A	270 (264)	800	390 (384)	1600
B			460 (454)	
C			560 (554)	2400
D			630 (624)	3200

Circling to NORTH side of RWY only.
MINIMA with Missed APCH climb gradient of 2.5% are not established.

CHANGE : VAR.

INSTRUMENT APPROACH CHART

RJOC / IZUMO VOR RWY25

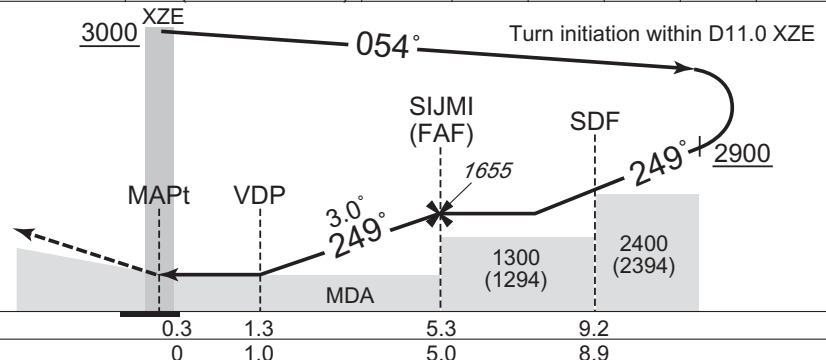


NM to XZE	MAPt	2	3	4	5	FAF
ALT (3.0° APCH Path)	-	595	914	1232	1550	1655

MISSED APPROACH

Climb via XZE R249 to 1600FT,
turn right direct to XZE
VOR/DME and hold at 3000FT.
Contact IZUMO RADIO.

Timing not authorized for defining the MAPt.



Missed APCH climb gradient MNM 5.0%

MINIMA		THR elev. 15	AD elev. 6	
CAT	MDA(H)	CMV	CIRCLING	
			MDA(H)	VIS
A	380 (374)	1000	900	390 (384)
B			460 (454)	1600
C			560 (554)	2400
D			630 (624)	3200

CHANGE : VAR.

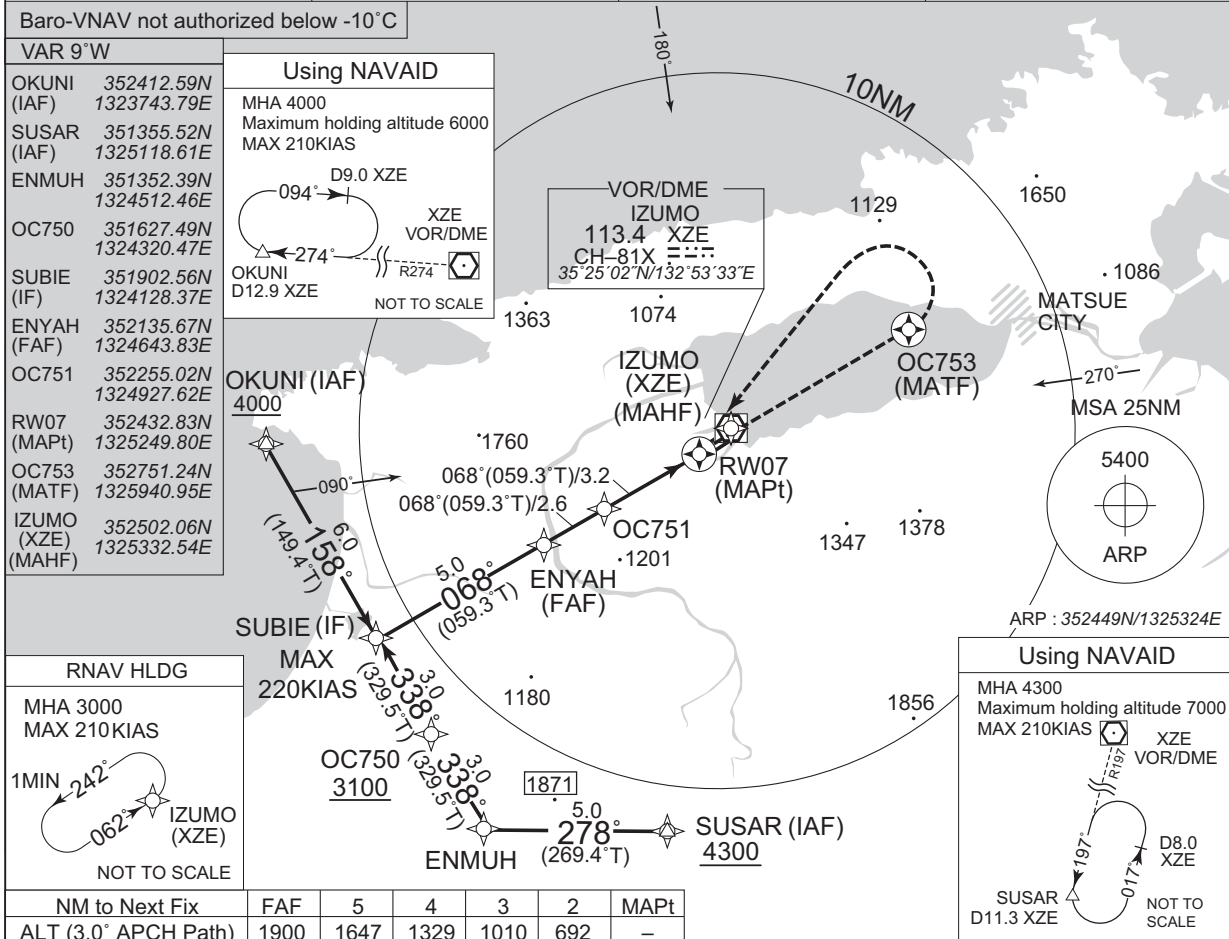
Circling to NORTH side of RWY only.
MINIMA with Missed APCH climb gradient of 2.5% are not established.

INSTRUMENT APPROACH CHART

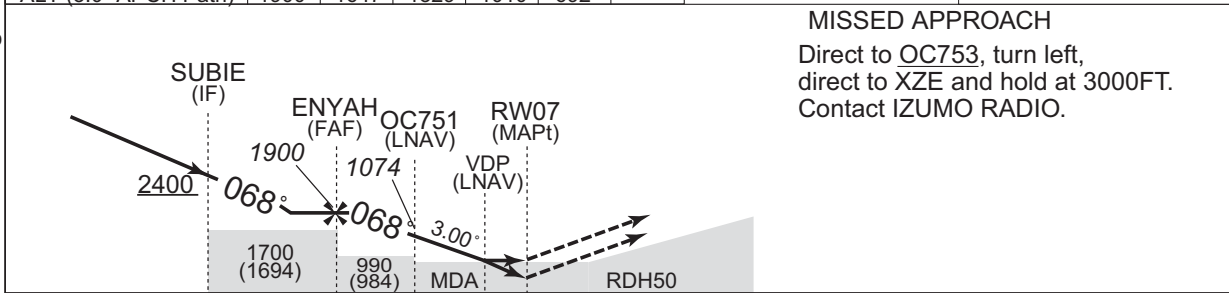
RJOC / IZUMO

RNP RWY07

MIHO APP 120.1 – 125.4 258.2 – 317.8	RNP APCH MSAS CH80943 M07A	IZUMO RADIO 122.7 – 126.2	RADAR AVBL
--	----------------------------------	------------------------------	------------



CHANGE : PROC course. Missed APCH for using VOR/DME abolished. MSAS CH added. VAR. NM to THR for VDP. Missed APCH climb gradient MNM established. MINIMA.



Missed APCH climb gradient MNM 5.0%

MINIMA		THR elev. 6				AD elev. 6		
CAT	LPV		LNAV/VNAV		LNAV		CIRCLING	
	DA(H)	CMV	DA(H)	CMV	MDA(H)	CMV	MDA(H) VIS	
A	256 (250)	1500	349 (343)	1500	480 (474)	1500	480 (474)	1600
B							560 (554)	2400
C		1600	1800	2000	630 (624)	3200		
D		1800	2000					

Circling to NORTH side of RWY only.
MINIMA with Missed APCH climb gradient of 2.5% are not established.

INSTRUMENT APPROACH CHART

RJOC / IZUMO

RNP RWY07

FAS DATA BLOCK

Operation type	0	LTP/FTP ellipsoidal height	+00360
SBAS service provider identifier	2	FPAP latitude	352505.7945N
Airport identifier	RJOC	FPAP longitude	1325358.0770E
Runway	07	Threshold crossing height	00015.0
Approach performance designator	0	TCH units selector	1
Route indicator		Glide path angle	03.00
Reference path data selector	0	Course width at threshold	105.00
Reference path ID	M07A	∠ length offset	0000
LTP/FTP latitude	352432.8070N	HAL	40.0
LTP/FTP longitude	1325249.8095E	VAL	50.0
CRC remainder	30102B24		

Required additional data

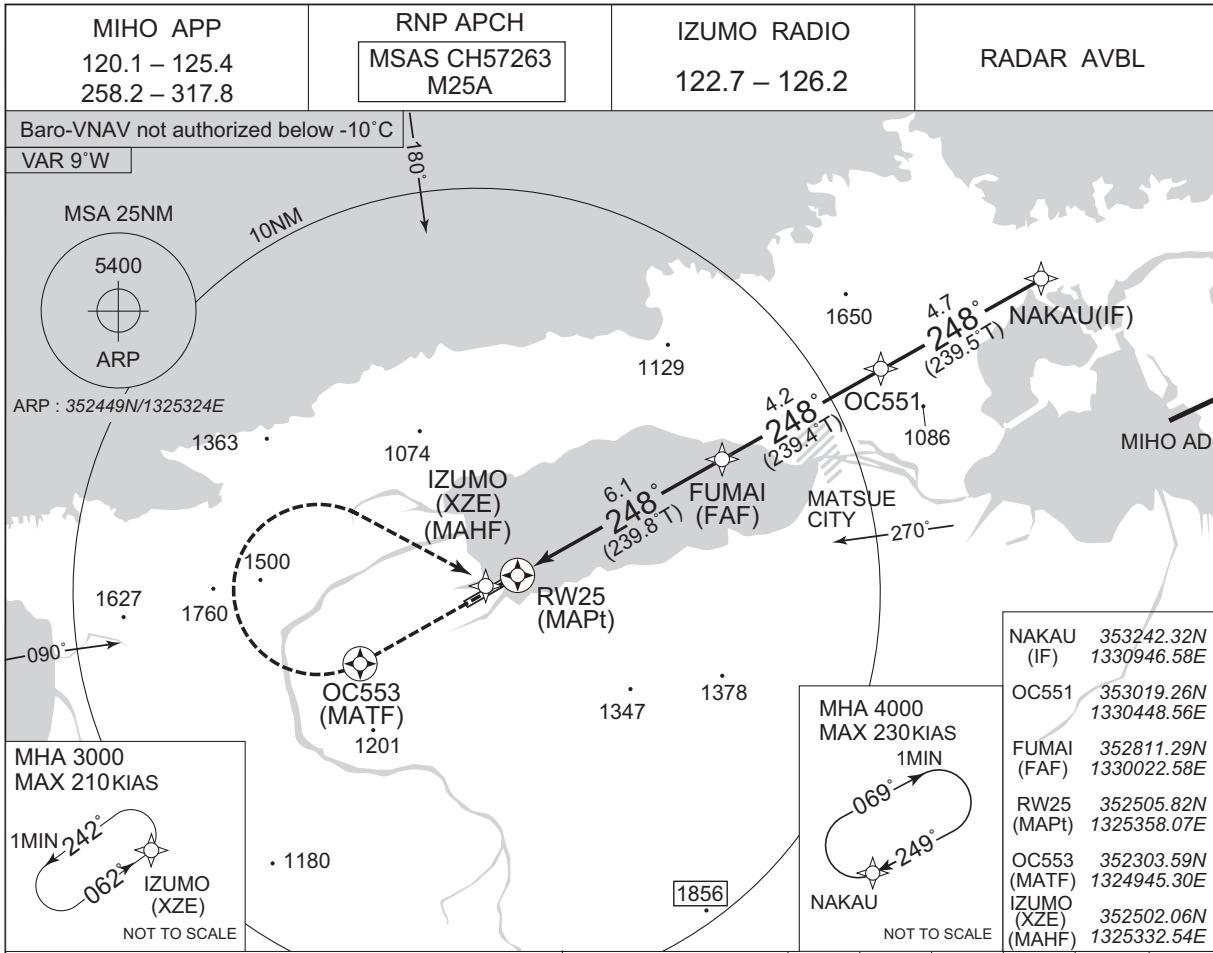
LTP/FTP orthometric height	1.4
----------------------------	-----

CHANGE : FAS DATA BLOCK, Required additional data established.

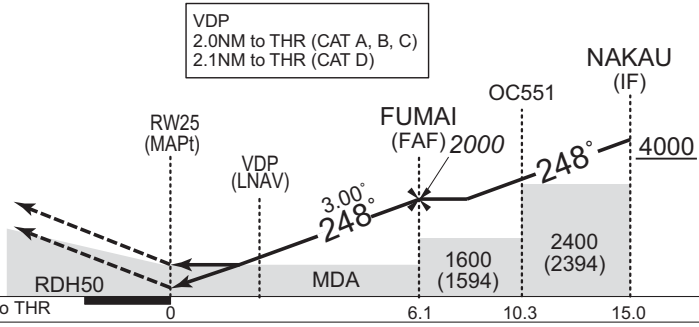
INSTRUMENT APPROACH CHART

RJOC / IZUMO

RNP RWY25



MISSED APPROACH
Direct to OC553, turn right, direct to XZE and hold at 3000FT. Contact IZUMO RADIO.



Missed APCH climb gradient MNM 5.0%

CAT	LPV		LNAV/VNAV		LNAV		CIRCLING	
	DA(H)	CMV	DA(H)	CMV	MDA(H)	CMV	MDA(H)	VIS
A	265 (250)	800	370 (355)	900	670 (664)	1200	670 (664)	1600
B				1000		1400		
C		1200	1400	1800	710 (704)	3200		
D		1200	405 (390)	1400	710 (704)	1800	710 (704)	3200

Circling to NORTH side of RWY only.
MINIMA with Missed APCH climb gradient of 2.5% are not established.

CHANGE : DIST FM FUMAI to RW25 in plan view.

INSTRUMENT APPROACH CHART

RJOC / IZUMO

RNP RWY25

FAS DATA BLOCK

Operation type	0	LTP/FTP ellipsoidal height	+00389
SBAS service provider identifier	2	FPAP latitude	352432.8070N
Airport identifier	RJOC	FPAP longitude	1325249.8095E
Runway	25	Threshold crossing height	00015.0
Approach performance designator	0	TCH units selector	1
Route indicator		Glide path angle	03.00
Reference path data selector	0	Course width at threshold	105.00
Reference path ID	M25A	∠ length offset	0000
LTP/FTP latitude	352505.7945N	HAL	40.0
LTP/FTP longitude	1325358.0770E	VAL	50.0
CRC remainder	F401BF48		

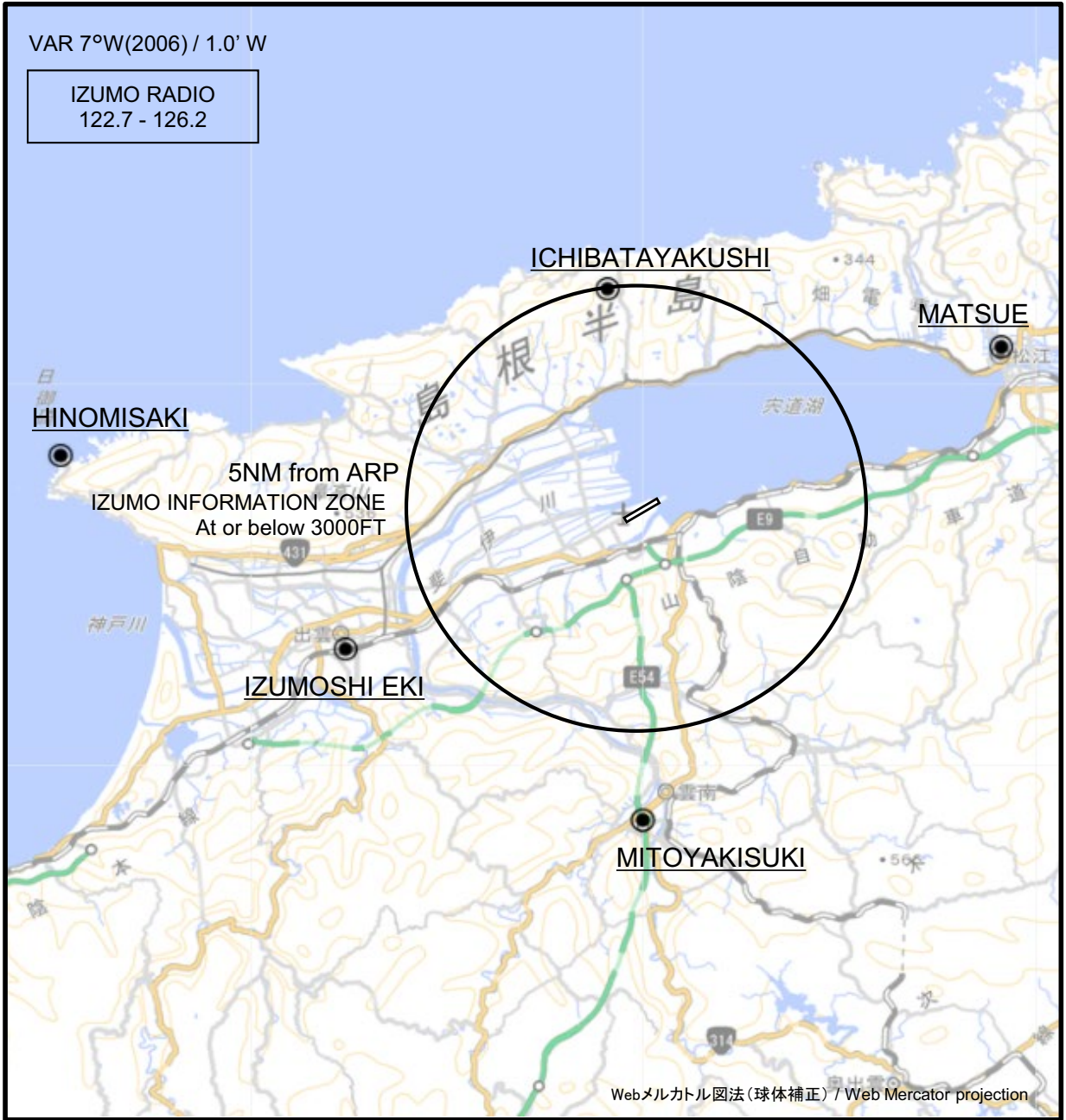
Required additional data

LTP/FTP orthometric height	4.3
----------------------------	-----

CHANGE : FAS DATA BLOCK, Required additional data established.

RJOC / IZUMO

Visual REP

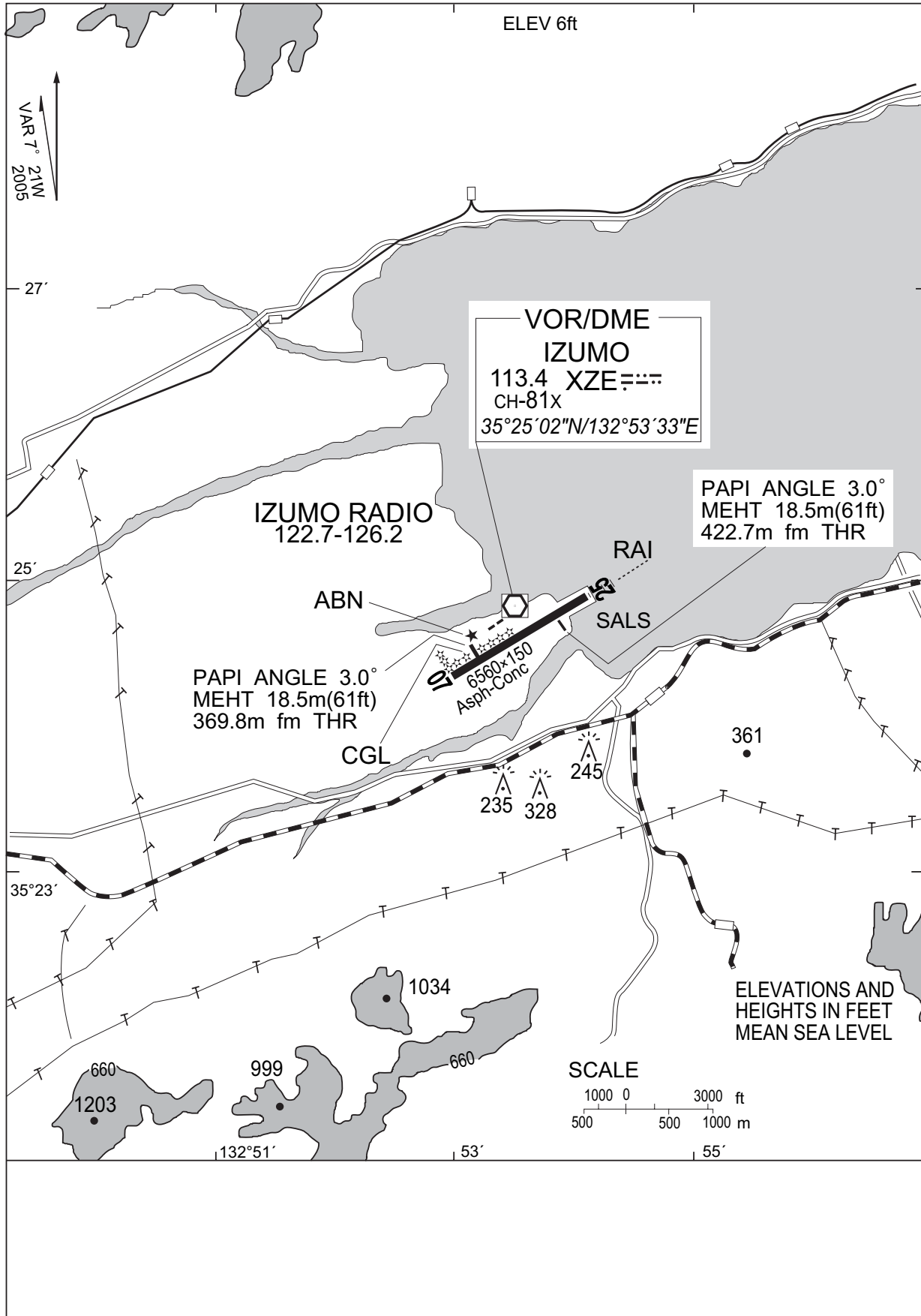


CHANGE : Map updated. BRG/DIST from ARP. Mitoyakisuki established. Kisuki abolished.

※図中に標高を示す数字がある場合、単位はメートル(m)である。The unit of measurement used to express elevation is meter(m).

Call sign	BRG / DIST from ARP	Remarks
一畑薬師 Ichibatayakushi	351°T / 5.0NM	寺 Temple
松江 Matsue	064°T / 8.7NM	城 Castle
日御碕 Hinomisaki	275°T / 12.8NM	灯台 Lighthouse
出雲市駅 Izumoshi Eki	244°T / 7.2NM	JR駅 Station
三刀屋木次 Mitoyakisuki	180°T / 7.0NM	IC Interchange

RJOC / IZUMO LDG CHART



RJOC / IZUMO

Minimum Vectoring Altitude CHART

