

STANDARD DEPARTURE CHART -INSTRUMENT

RJOE / AKENO

SID

KOWA SEVEN DEPARTURE

RWY13 : Turn left,...

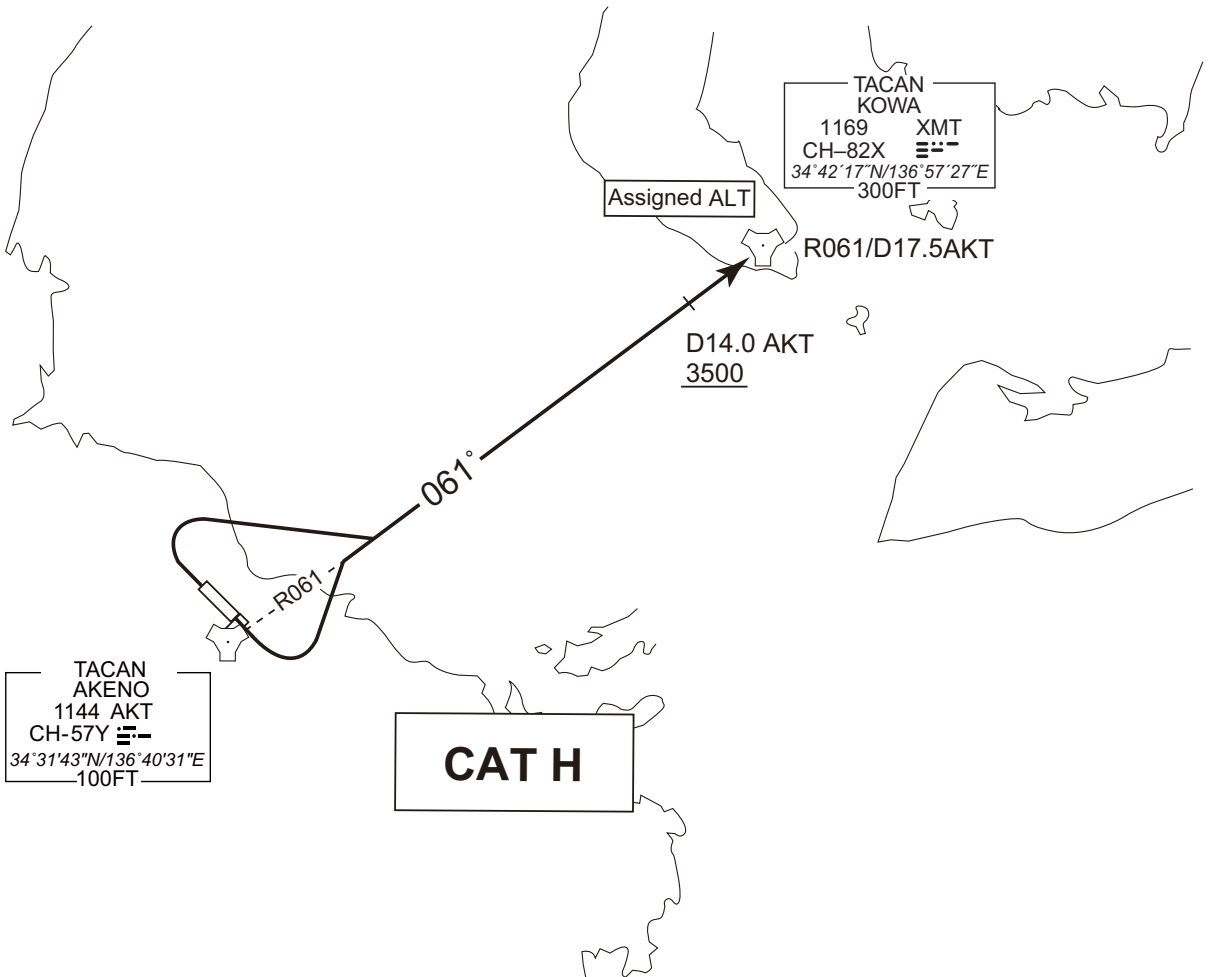
RWY31 : Turn right,...

...to intercept and proceed via AKT R061 to XMT TACAN.

Cross AKT R061/14.0DME at or above 3500FT, cross XMT TACAN at assigned altitude.

Note RWY13/31 : No turn before DER.

CHANGE : PROC course. PROC renamed(KOWA SEVEN DEPARTURE). NOTE added. ASAMA ONE DEPARTURE abolished.



STANDARD DEPARTURE CHART -INSTRUMENT

RJOE / AKENO

SID

HISAI TWO DEPARTURE

RWY13 : Turn left,...

RWY31 : Turn right,...

...to intercept and proceed via AKT R321 to HISAI.

Cross HISAI at or above 2500FT.

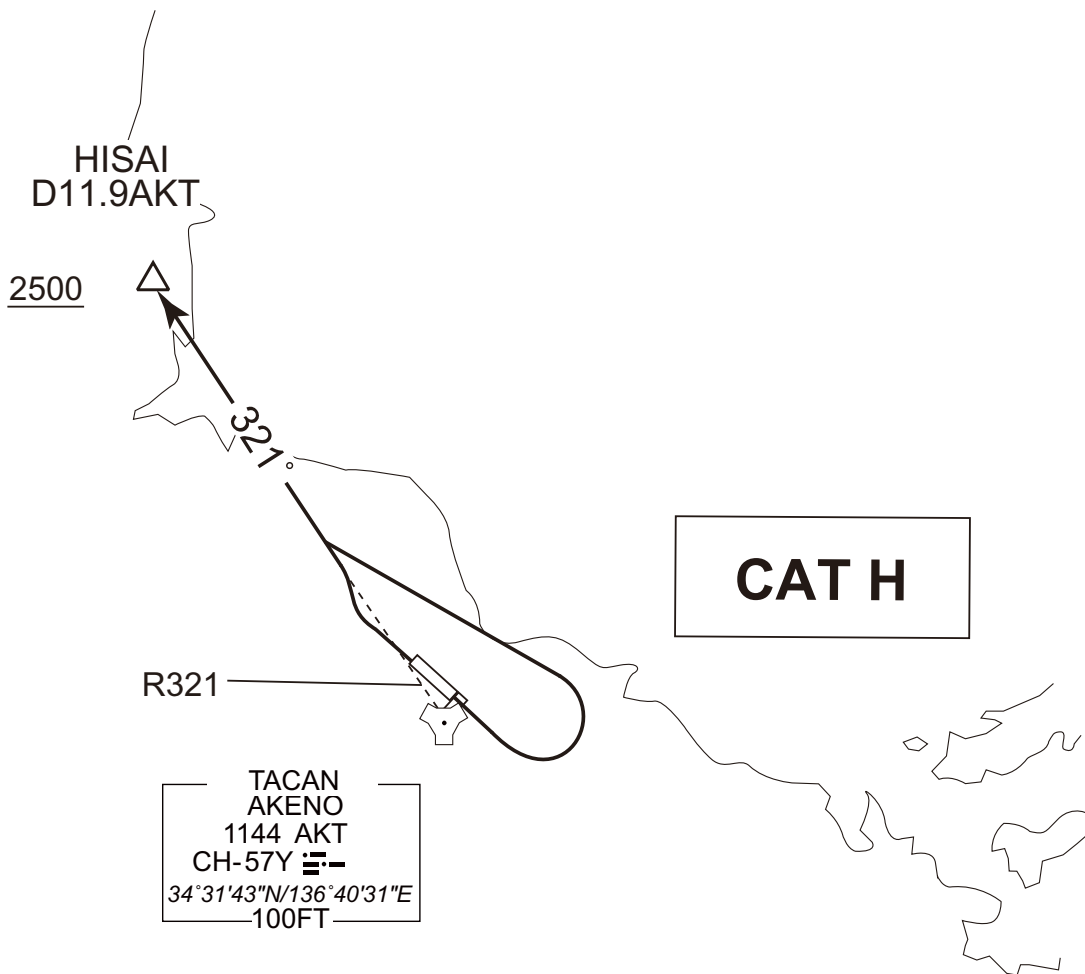
Note RWY13 : No turn before DER.

5.4% climb gradient required up to 400FT.

OBST ALT 159 FT located at 0.4NM 173° FM end of RWY13.

Note RWY31 : No turn before DER.

CHANGE : PROC course. PROC renamed(HISAI TWO DEPARTURE). NOTE.



STANDARD DEPARTURE CHART -INSTRUMENT

RJOE / AKENO

SID and TRANSITION

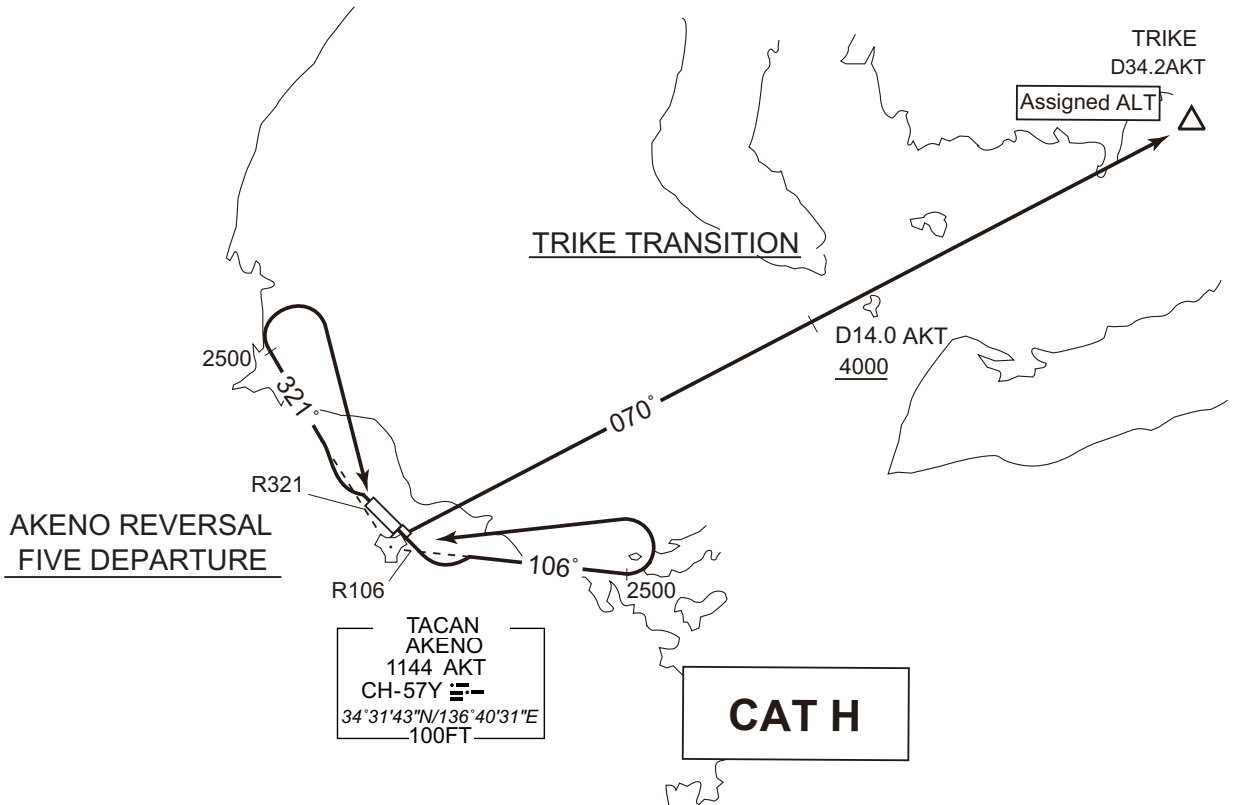
AKENO REVERSAL FIVE DEPARTURE

RWY13 : Turn left, to intercept and proceed via AKT R106 to 2500FT, turn left,...  
RWY31 : Turn right, to intercept and proceed via AKT R321 to 2500FT, turn right,...  
...direct to AKT TACAN.  
Note RWY13/31 : No turn before DER.

TRIKE TRANSITION

From over AKT TACAN, via AKT R070 to TRIKE.  
Cross AKT R070/14.0DME at or above 4000FT, cross TRIKE at assigned altitude.

CHANGE : PROC course. PROC renamed(AKENO REVERSAL FIVE DEPARTURE). NOTE added(AKENO REVERSAL FIVE DEPARTURE).



**INTENTIONALLY LEFT BLANK**

STANDARD ARRIVAL CHART-INSTRUMENT

RJOE / AKENO

STAR

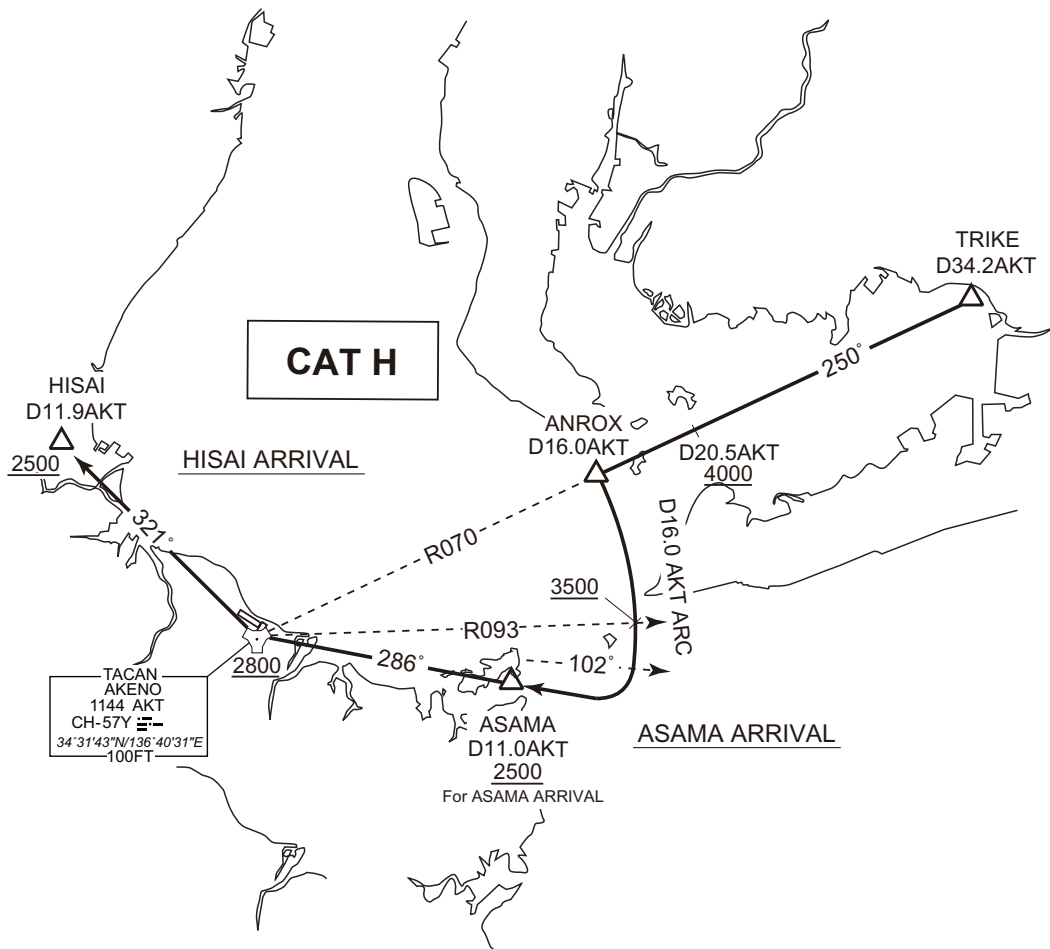
ASAMA ARRIVAL

From over TRIKE, via AKT R070 to ANROX, via AKT 16.0DME clockwise ARC to intercept and proceed via AKT R106 to ASAMA.  
Cross AKT R070/20.5DME at or above 4000FT,  
cross AKT R093/16.0DME at or above 3500FT,  
cross ASAMA at or above 2500FT.

HISAI ARRIVAL

From over TRIKE, via AKT R070 to ANROX, via AKT 16.0DME clockwise ARC to intercept and proceed via AKT R106 to AKT TACAN, via AKT R321 to HISAI.  
Cross AKT R070/20.5DME at or above 4000FT,  
cross AKT R093/16.0DME at or above 3500FT,  
cross AKT TACAN at or above 2800FT,  
cross HISAI at or above 2500FT.

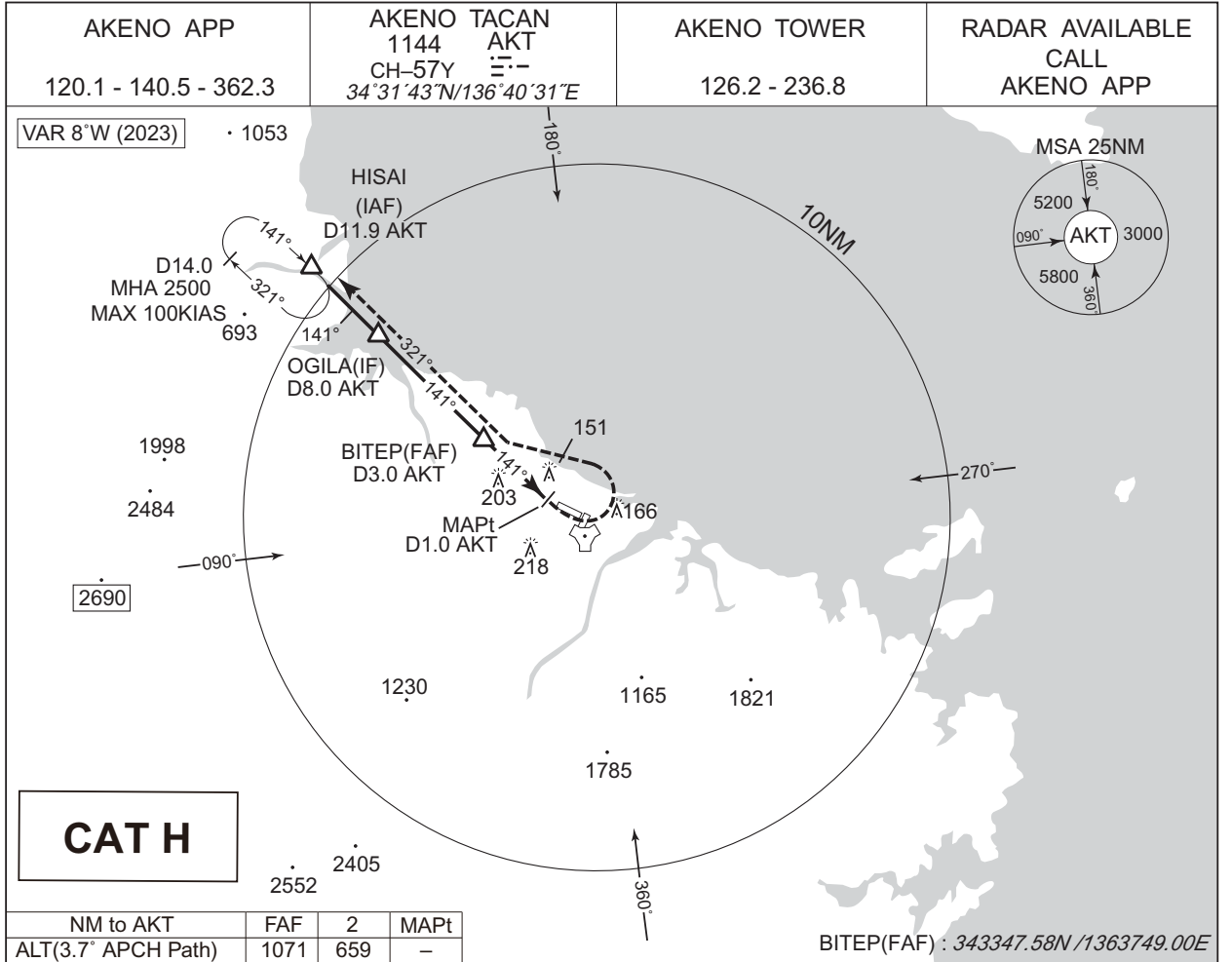
CHANGE : New PROC.



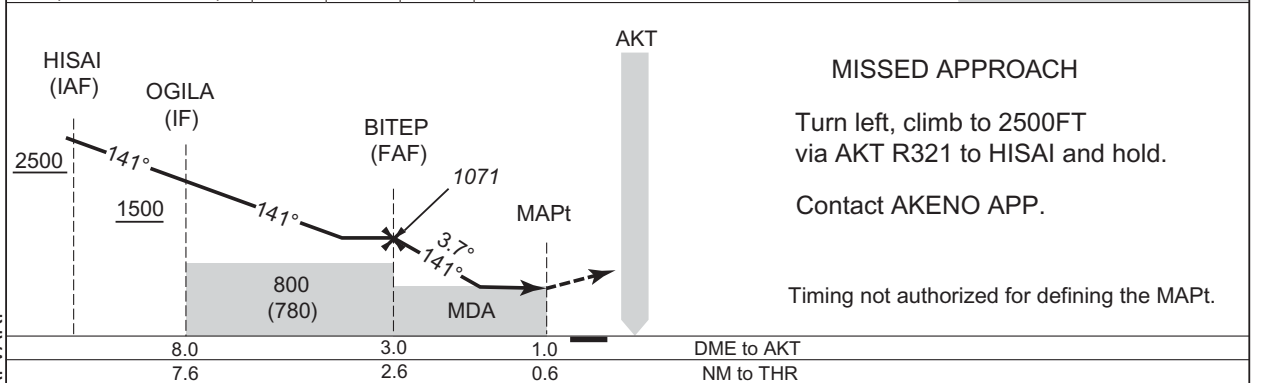
**INTENTIONALLY LEFT BLANK**

INSTRUMENT APPROACH CHART

RJOE / AKENO TACAN RWY13



CHANGE : PROC course. PROC renamed. Missed APCH PROC. MINIMA. ALT(3.7°APCH Path) established. HLDG Pattern. DME to AKT, NM to THR established.  
OGILA, BITEP established. MSA. VAR.



	DME to AKT	NM to THR		
8.0	3.0	1.0		
7.6	2.6	0.6		
<b>MINIMA</b>	THR elev. 18	AD elev. 20		
<b>CAT</b>	<b>CIRCLING</b>			
H	MDA(H)	CMV	MDA(H)	VIS
	400 (380)	1500	530 (510)	1600

Circling to RWY31 ONLY.

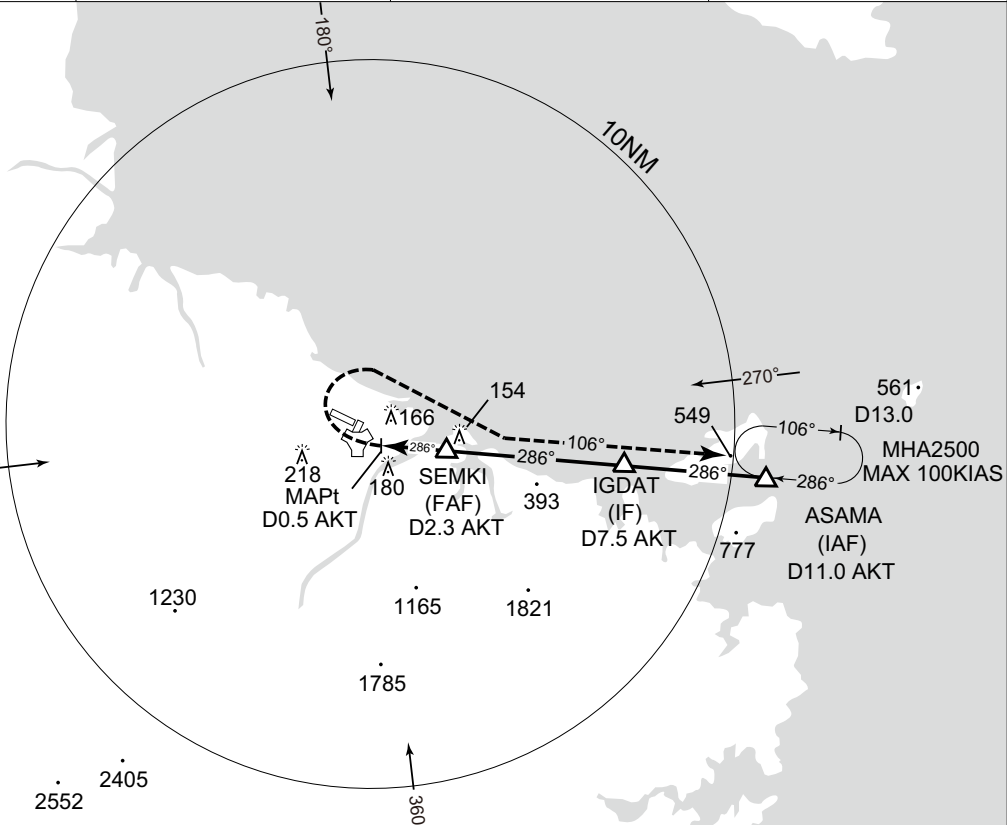
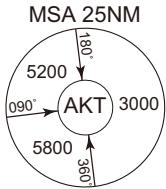
INSTRUMENT APPROACH CHART

RJOE / AKENO

TACAN RWY31

AKENO APP 120.1 - 140.5 - 362.3	AKENO TACAN 1144 AKT CH-57Y 34°31'43"N/136°40'31"E	AKENO TOWER 126.2 - 236.8	RADAR AVBL CALL AKENO APP
------------------------------------	---	------------------------------	---------------------------------

VAR 8°W (2023)



**CAT H**

SEMKI(FAF) : 343122.99N / 1364319.18E

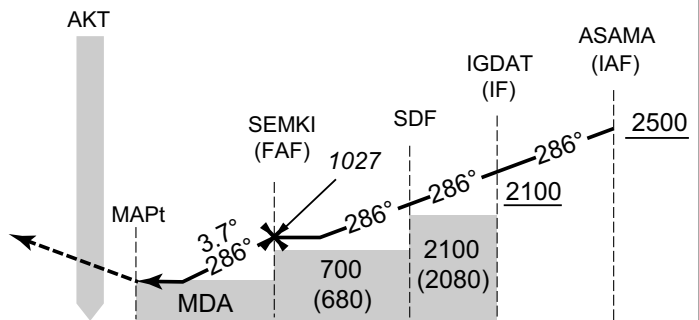
NM to AKT	MAPt	1	2	FAF
ALT(3.7° APCH Path)	-	496	891	1027

**MISSED APPROACH**

Turn right, climb to 2500FT via AKT R106 to ASAMA and hold.

Contact AKENO APP.

Timing not authorized for defining the MAPt.



DME to AKT	0.5	2.3	5.7	7.5
NM to THR	0.7	2.5	5.9	7.7

MINIMA		THR elev. 15	AD elev. 20	
CAT	CIRCLING			
	MDA(H)	CMV	MDA(H)	VIS
H	430 (410)	1500	530 (510)	1600

Circling to RWY13 ONLY.

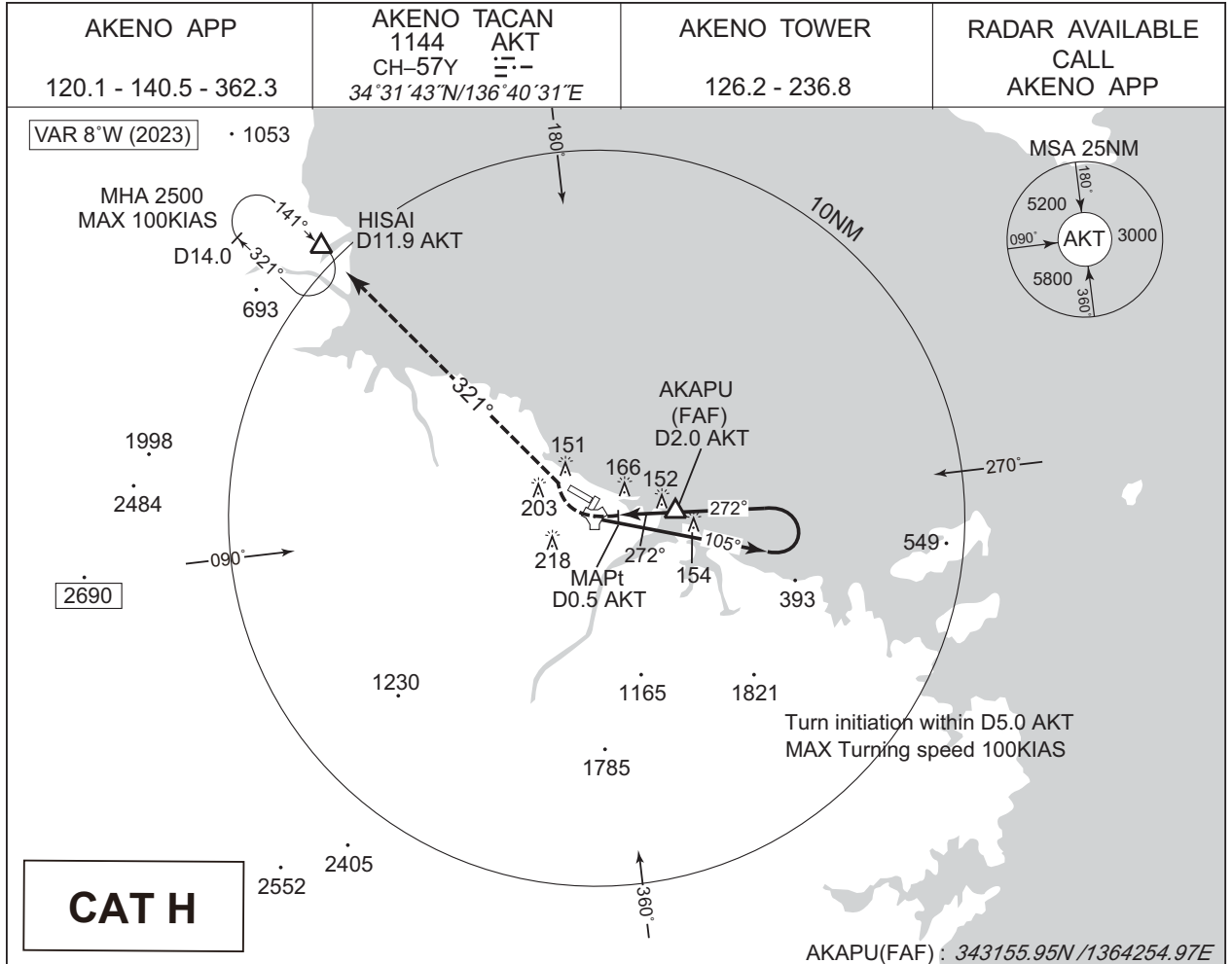
CHANGE : PROC course. PROC renamed. Missed APCH PROC. MINIMA. ALT(3.7° APCH Path) established. HLDG Pattern. DME to AKT, NM to THR established. IGDAT, SEMKI established. MSA. VAR.



INSTRUMENT APPROACH CHART

RJOE / AKENO

TACAN A



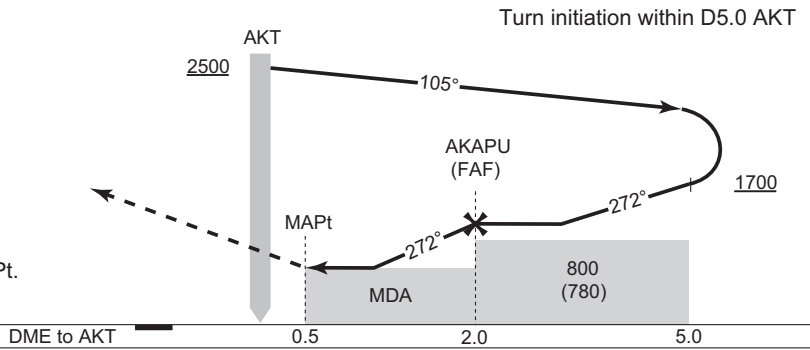
**CAT H**

MISSED APPROACH

Turn right, climb to 2500FT  
via AKT R321 to HISAI and hold.

Contact AKENO APP.

Timing not authorized for defining the MAPt.



MINIMA AD elev. 20

CAT	CIRCLING	
	MDA(H)	VIS
H	530 (510)	1600

Circling to RWY13/31 ONLY.

CHANGE : New PROC.

**INTENTIONALLY LEFT BLANK**