

STANDARD DEPARTURE CHART -INSTRUMENT

RJOF / HOFU

SID

HOFU REVERSAL THREE DEPARTURE

RWY 12 : Climb ...

RWY 30 : Climb RWY HDG until 2.0NM from RWY end(2.4DME from FMT),  
turn left ...

...via FMT R116 to 2500FT or above, turn right direct to FMT  
TACAN within FMT 10.4DME.

Cross FMT TACAN at 4000FT or specified altitude.

Note RWY 12 : Minimum rate of climb 410FT/NM until 2500FT.

RWY 30 : Minimum rate of climb 360FT/NM until 1500FT.

YASAKA TRANSITION

From over FMT TACAN, via FMT R348 to intercept and proceed via  
FMT 13DME clockwise ARC to YASAK, proceed via IWT R299 to IWT TACAN.  
Maintain 4000FT or specified altitude until FMT 3DME, cross FMT 10DME at  
6000FT or above and cross YASAK at assigned or specified altitude.

YAMAGUCHI TRANSITION

From over FMT TACAN, via FMT R348 to YUDAR, maintain  
4000FT or specified altitude until FMT 3DME, then make left procedure  
turn to YUDAR within FMT 15DME, cross YUDAR at assigned altitude,  
then proceed to FMT TACAN.

KUGA FOUR DEPARTURE

RWY 12 : Climb ...

RWY 30 : Climb RWY HDG until 2.0NM from RWY end(2.4DME from FMT),  
turn left ...

...via FMT R116 to intercept and proceed via FMT 8DME  
counter-clockwise ARC to intercept FMT R093, turn right, proceed  
via FMT R093 to IWT TACAN.

Cross FMT R093/19DME at assigned altitude.

Note RWY 12 : Minimum rate of climb 410FT/NM until 1500FT.

RWY 30 : Minimum rate of climb 360FT/NM until 1500FT.

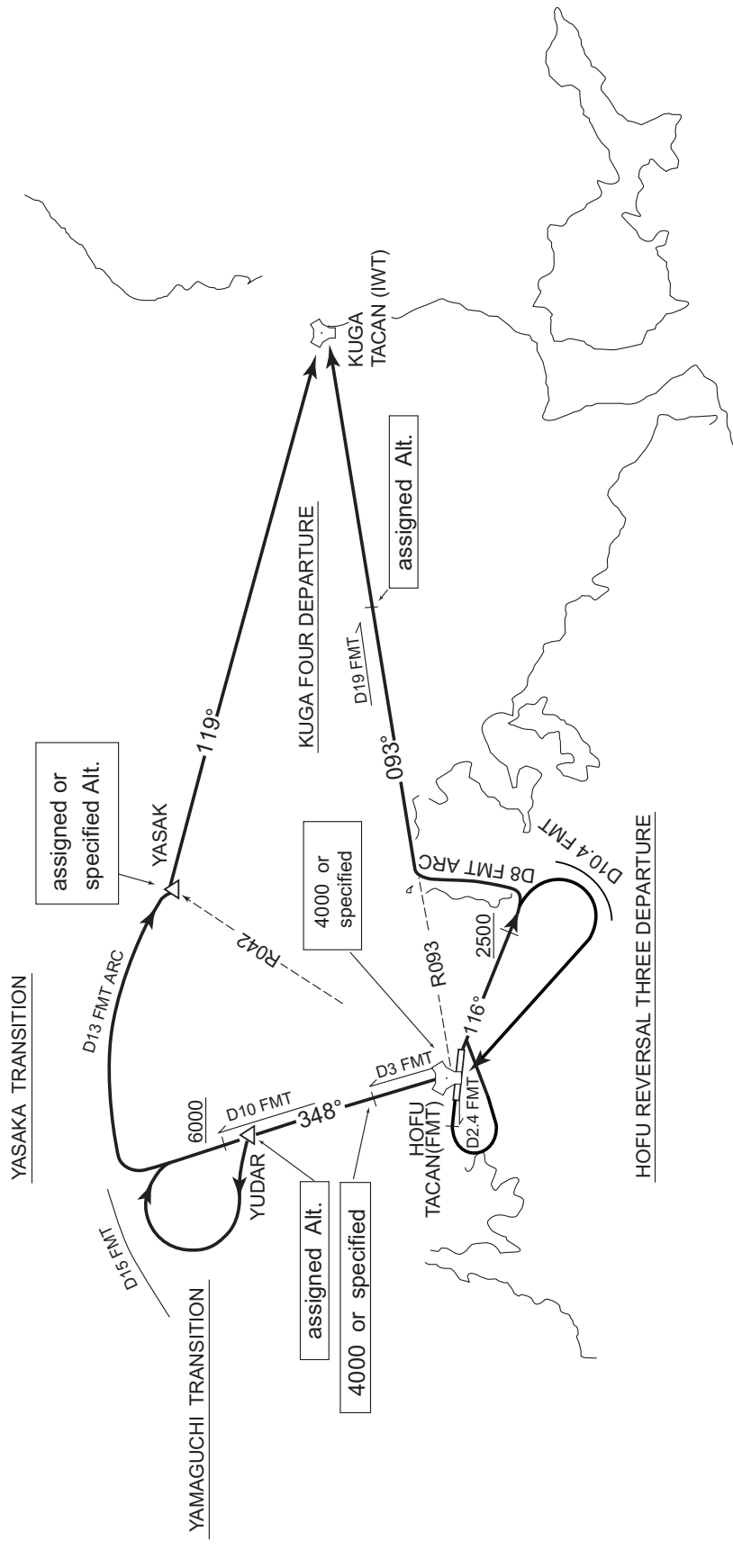
CHANGE : PROC renamed, PROC course, Note(HOFU REVERSAL THREE DEPARTURE, KUGA FOUR DEPARTURE).

STANDARD DEPARTURE CHART -INSTRUMENT

RJOF / HOFU

SID

CHANGE : PROC renamed, PROC course(HOFU REVERSAL THREE DEPARTURE, KUGA FOUR DEPARTURE).



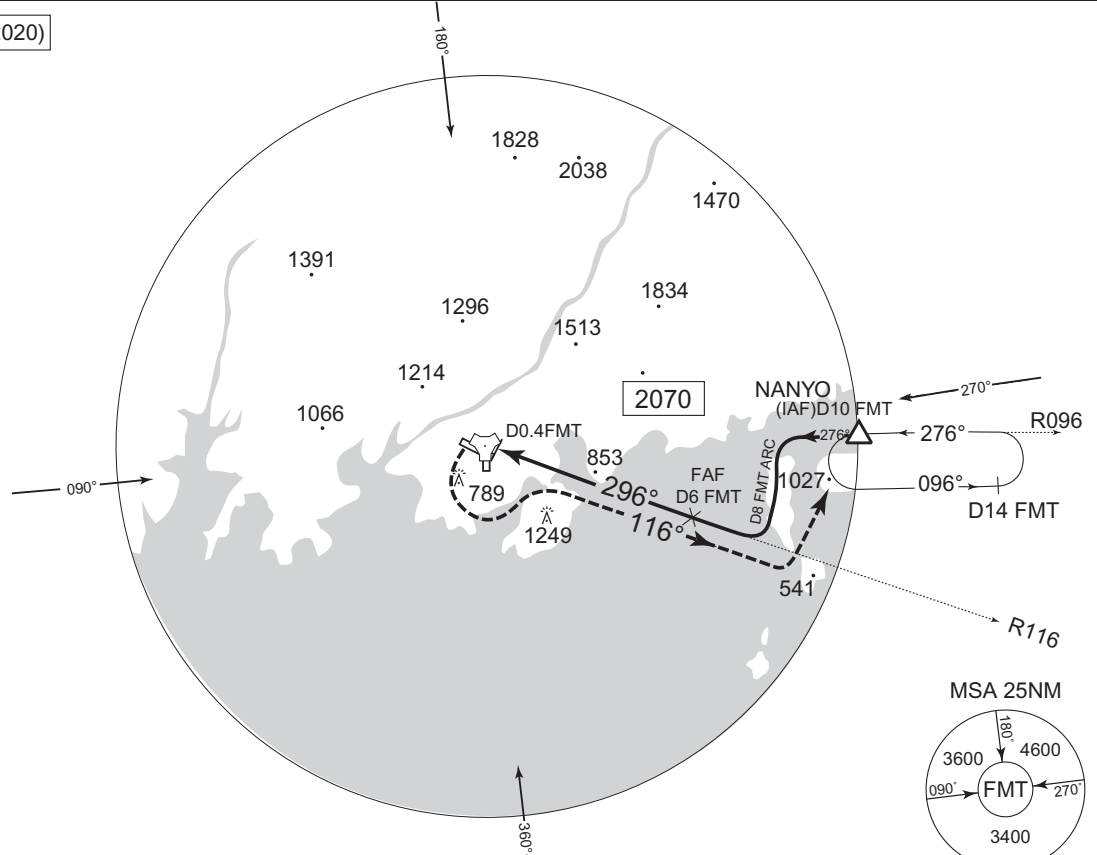
INSTRUMENT APPROACH CHART

RJOF / HOFU

TACAN A

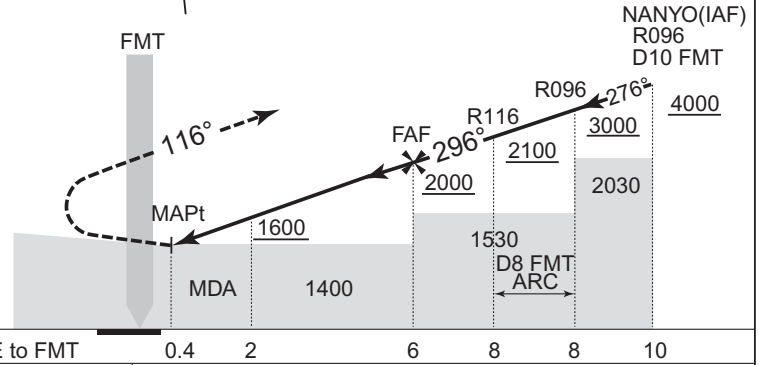
TSUIKI APP 119.225 – 315.9	HOFU TACAN 1164 FMT CH-77X $\equiv \equiv \equiv$ 34°02'18"N/131°32'45"E	HOFU TOWER 126.2 – 236.8	RADAR AVBL CALL TSUIKI APP
-------------------------------	---	-----------------------------	-------------------------------

VAR 8°W (2020)



EMERG SAFE ALT 100nm 8500

**MISSED APPROACH**  
0.4DME prior to FMT TACAN, left climbing turn to 4000FT via FMT R116 within FMT 10DME, then proceed to NANYO and hold. Contact TSUIKI APP.



CHANGE : OBST.ALT restriction. OCA(H). MINIMA.

MINIMA		AD elev. 7
CAT	CIRCLING	
	MDA(H)	VIS
A	1100 (1093)	1600
B		
C	1500 (1493)	2400
D	1600 (1593)	3200

Circling to RWY12 and RWY30 only.

**INTENTIONALLY LEFT BLANK**