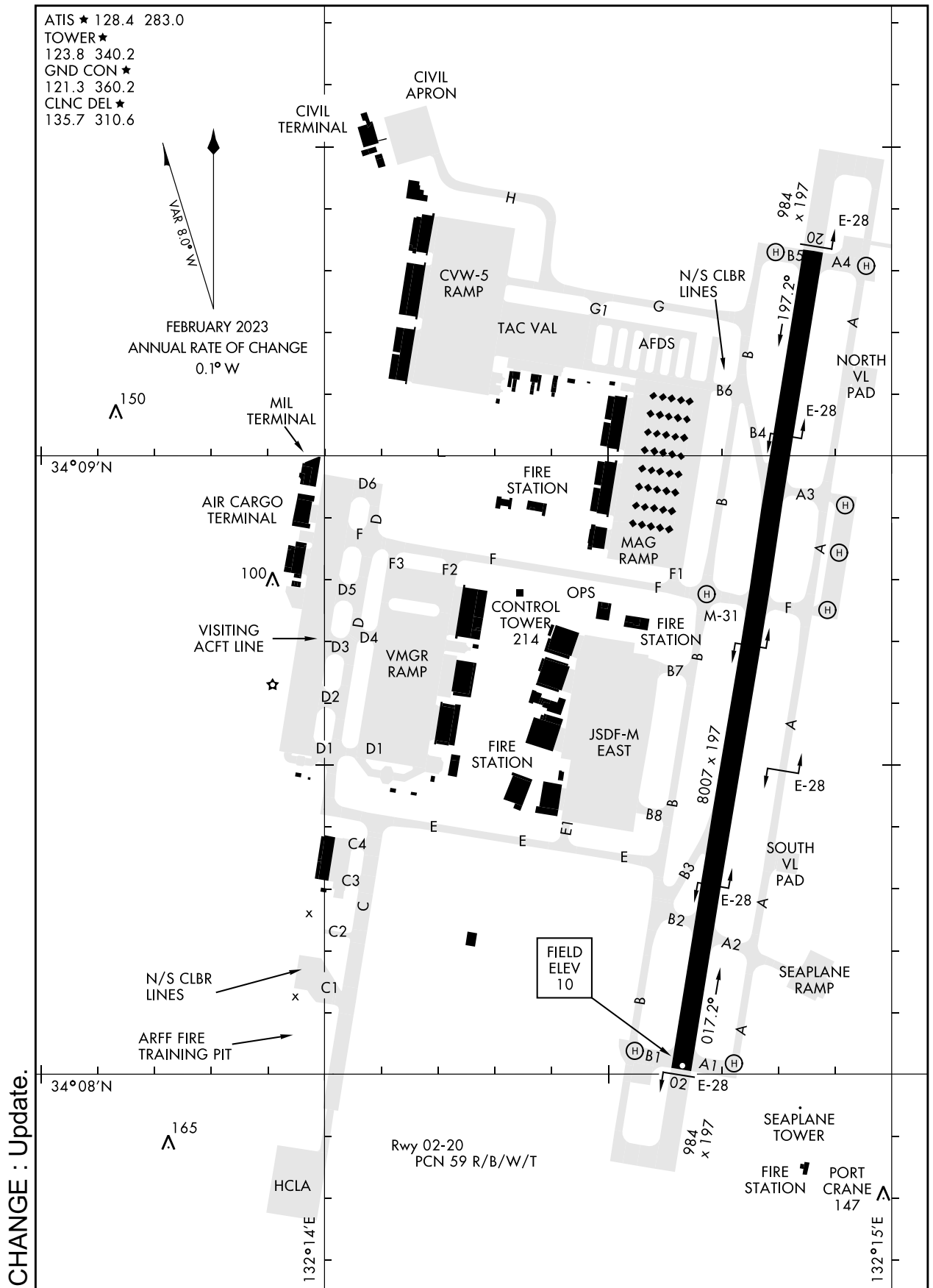


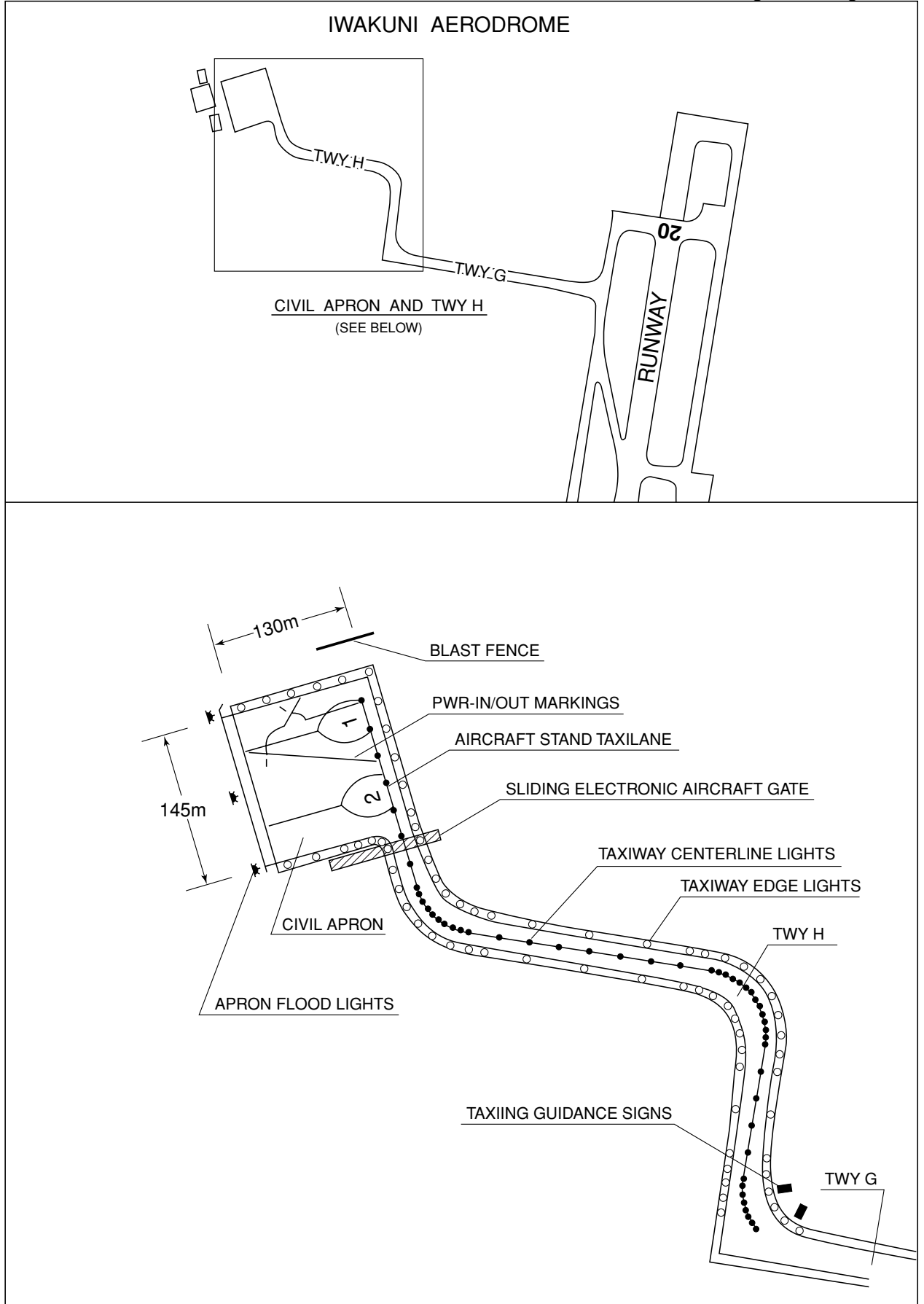
RJOI/IWAKUNI

AD CHART



RJOI / IWAKUNI

Aircraft Parking / Docking Chart



STANDARD DEPARTURE CHART - INSTRUMENT

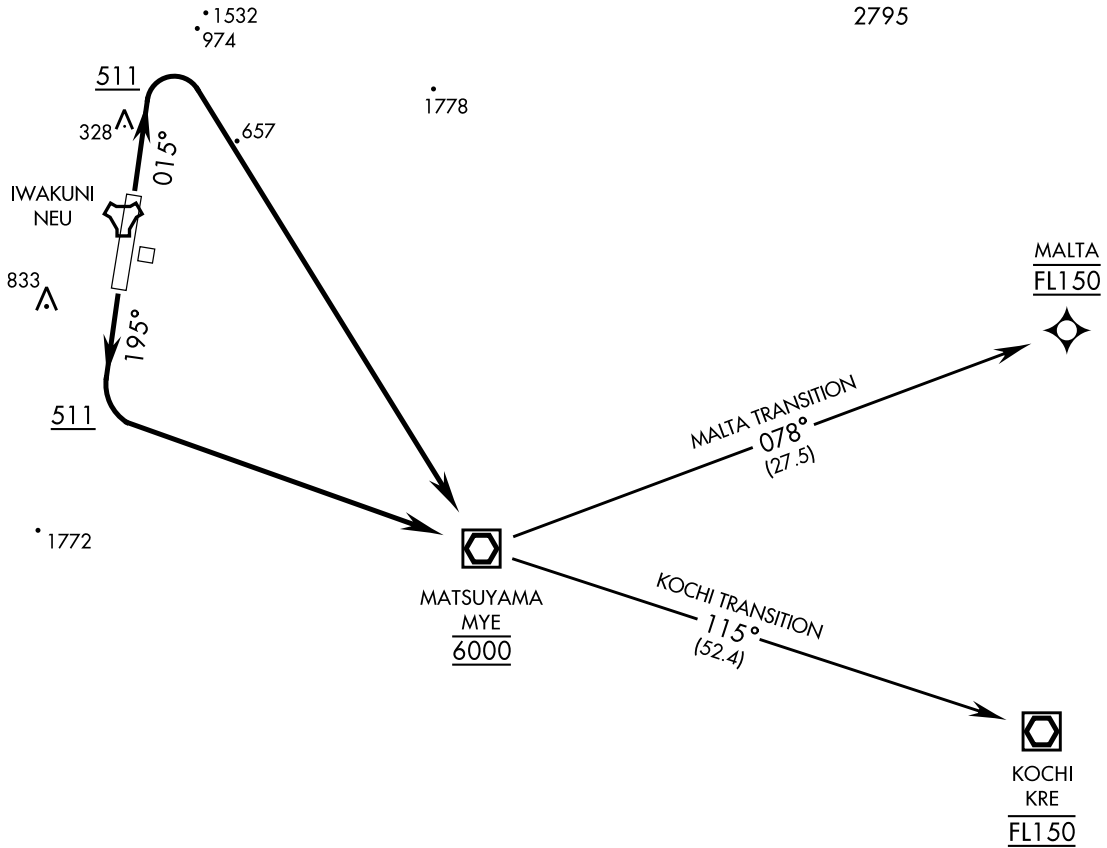
RJOI / IWAKUNI MATSUYAMA SE THREE DEPARTURE(OBSTACLE) (RNAV)

ATIS ★ 128.4 283.0
CLNC DEL ★
135.7 310.6
GND CON ★
121.3 360.2
TOWER ★
123.8 340.2
DEP CON ★
131.4 363.8

RNAV1-DME/DME/IRU,
DME/DME, GNSS, or RNP 2.0

Rwy	Knots	60	120	180	240	300	360
* 02 (a) V/V(fpm)		230	460	690	920	1150	1650
† 02/20 (b) V/V(fpm)		330	660	990	1320	1650	1980
† 20 (c) V/V(fpm)		204	408	612	816	1020	1224

* Minimum † ATC Climb Rate
(a) to 2300
(b) MALTA transition to 15,000 from MYE to MALTA
(c) to 6000



NOTE: Chart not to scale

TA 14,000



DEPARTURE ROUTE DESCRIPTION

TAKEOFF RWY 02: Climb heading 015° to 511, then on depicted route. Cross MATSUYAMA VOR/DME (MYE) at 6000 thence...

TAKEOFF RWY 20: Climb heading 195° to 511, then on depicted route. Cross MATSUYAMA VOR/DME (MYE) at 6000 thence...

KOCHI TRANSITION: As depicted. Cross KOCHI (KRE) at FL150. Maintain FL150 or higher as assigned.

MALTA TRANSITION: As depicted. Cross MALTA at FL150, maintain FL150 or higher as assigned.

CHANGE : Update.

NOTE: REPRINTING DOD FLIP

INSTRUMENT APPROACH CHART

RJOI/IWAKUNI

LOC/DME I-IJO 110.15 Chan 38(Y)	APCH CRS 014°	Rwy ldg 8007 TDZE 10 Arpt Elev 10
---	-------------------------	--

ILS RWY02

RADAR or MYE VOR/DME required

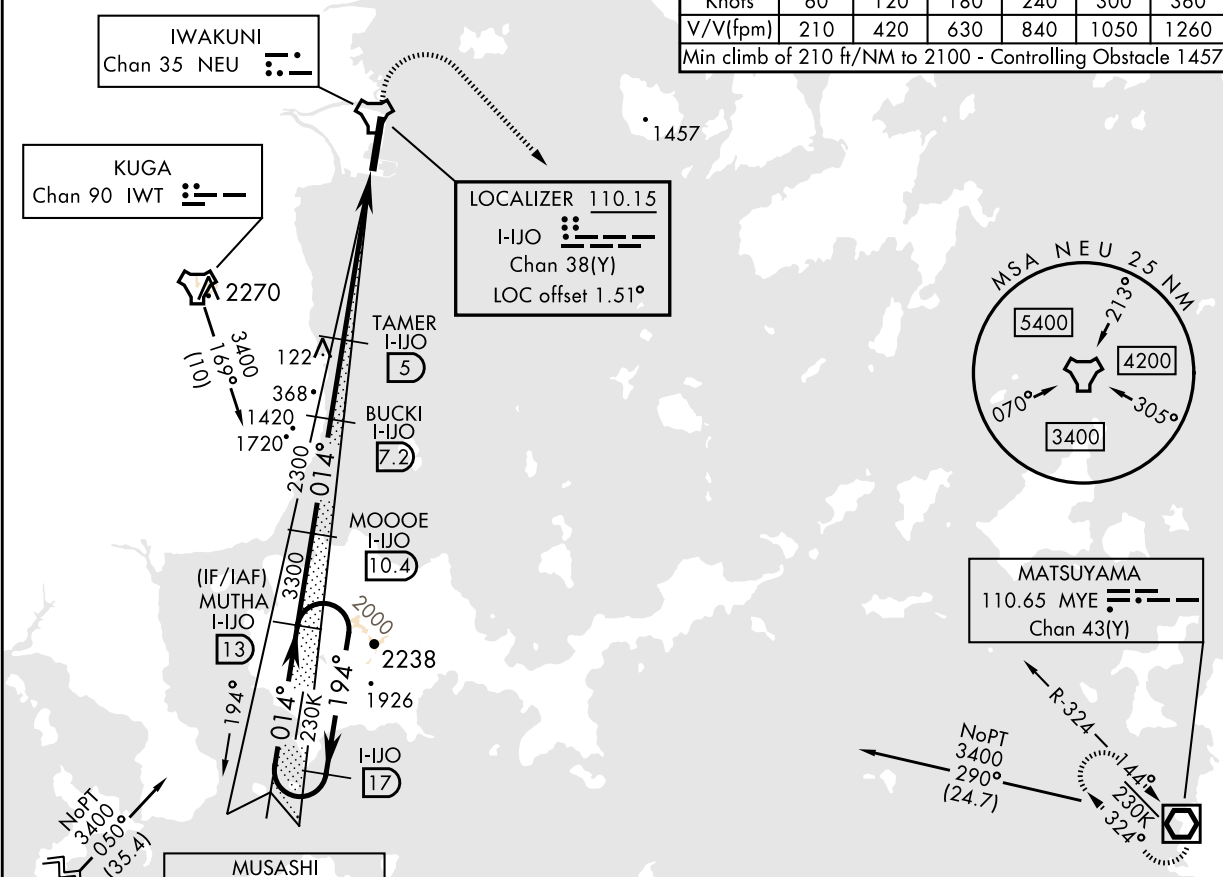
▼ *When ALS inop, increase CAT ABCD vis to 3/4 mile.
**When ALS inop, increase CAT AB vis to 1 mile,
CAT CD vis to 1 1/8 miles.
*** Circling not authorized W of Rwy 02-20. CAT D remain within 2.8 NM.

ALSF-1

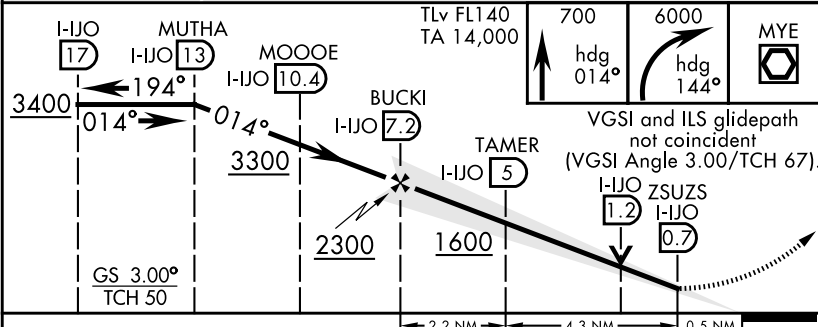
MISSED APPROACH: Climb on heading 014° to 700, then climbing right turn to 6000 heading 144° direct MYE VOR/DME and hold.

ATIS★ 128.4 283.0	APP CON★ 131.4 236.2	TOWER★ 123.8 340.2	GND CON★ 121.3 360.2	CLNC DEL★ 135.7 310.6	ASR/PAR
-----------------------------	--------------------------------	------------------------------	--------------------------------	---------------------------------	---------

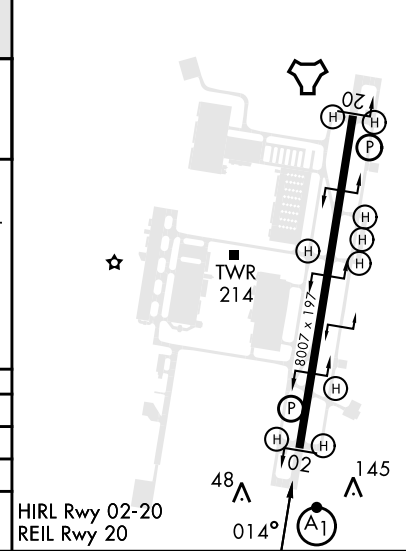
Knots	60	120	180	240	300	360
V/V(fpm)	210	420	630	840	1050	1260
Min climb of 210 ft/NM to 2100 - Controlling Obstacle 1457						



EMERG SAFE ALT 100 NM 8500



ELEV 10	TDZE 10
---------	---------



CHANGE: Update.

CATEGORY	A	B	C	D
S-ILS 02*		260-1/2	250 (300-1/2)	
S-LOC 02**	400-1/2	390 (400-1/2)	400-5/8	390 (400-5/8)
CIRCLING***	460-1	450 (500-1)	460-1 1/2	560-2
			450 (500-1 1/2)	550 (600-2)

NOTE: REPRINTING DOD FLIP

INSTRUMENT APPROACH CHART

RJOI/IWAKUNI

APCH CRS	Rwy ldg	8007
015°	THRE	10
	Arprt Elev	10

RNAV(GPS) RWY02

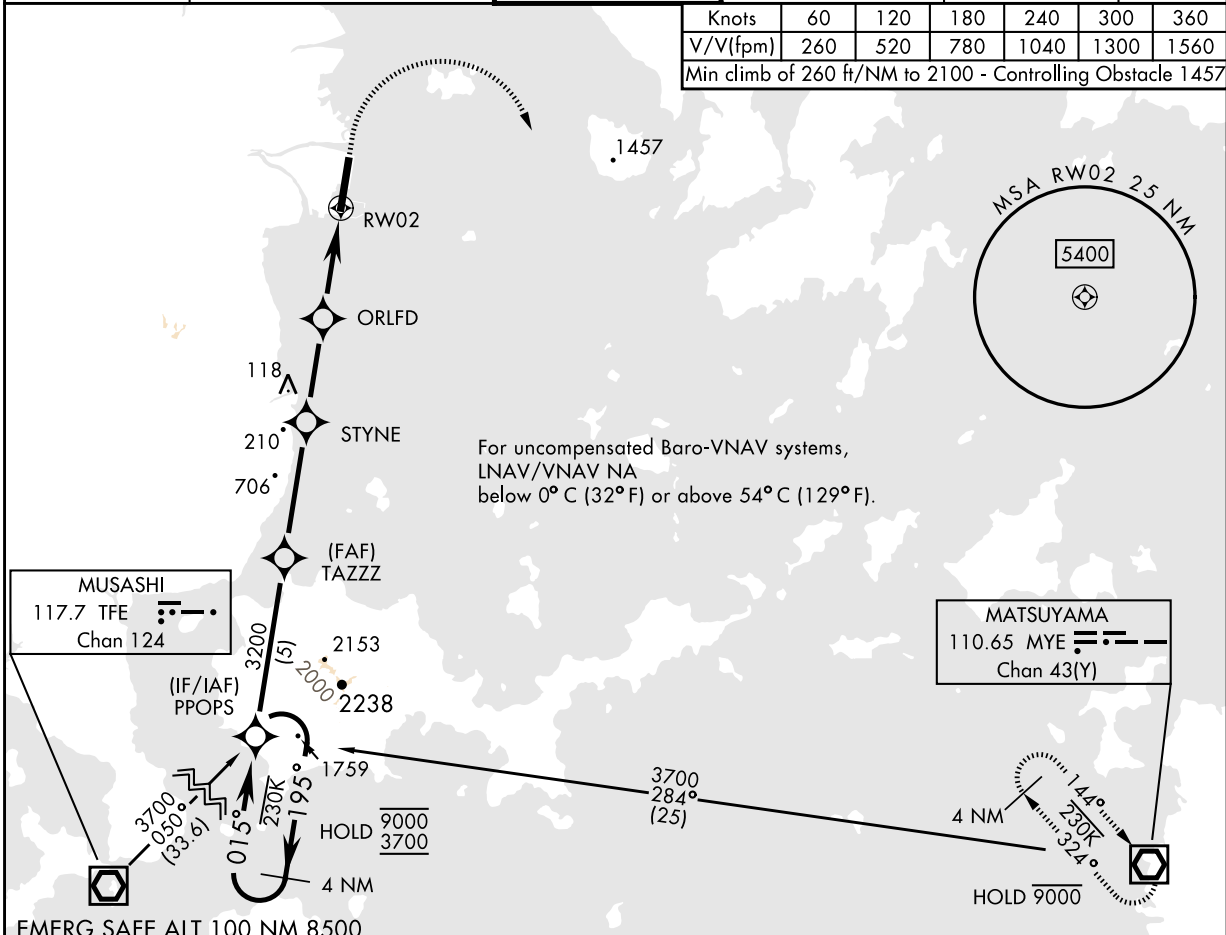
RNP APCH
 * When ALS inop, increase vis to 7/8 mile.
 ** When ALS inop, increase CAT AB vis to 1 mile, CAT CD vis to 1 1/8 miles.
 *** Circling not authorized W of Rwy 02-20. CAT D circling remain within 2.8 NM.



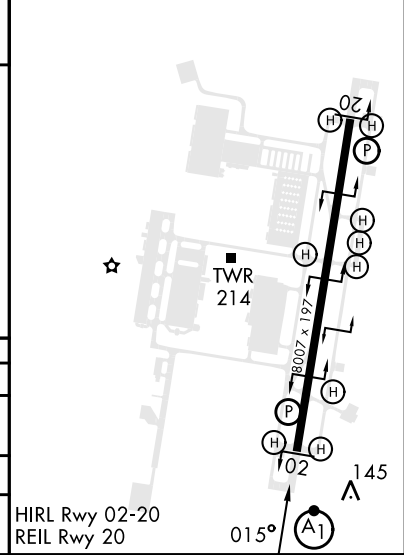
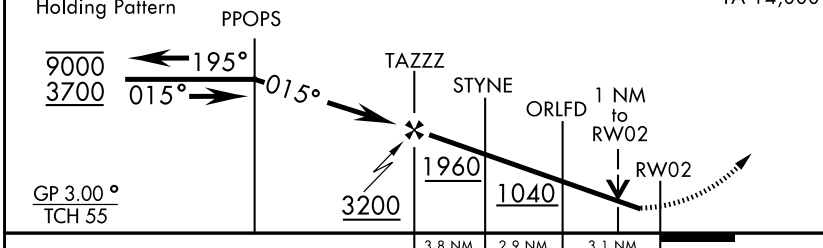
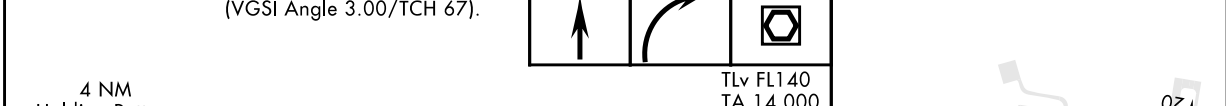
MISSED APPROACH: Climb to 440 then climbing right turn to 6000 direct MYE and hold.

ATIS ★	APP CON ★	TOWER ★	GND CON ★	CLNC DEL ★	ASR/PAR
128.4 283.0	131.4 236.2	123.8 340.2	121.3 360.2	135.7 310.6	

Knots	60	120	180	240	300	360
V/V(fpm)	260	520	780	1040	1300	1560
Min climb of 260 ft/NM to 2100 - Controlling Obstacle 1457						



EMERG SAFE ALT 100 NM 8500



CATEGORY	A	B	C	D
LNAV/ * VNAV DA	276-1/2 266 (300-1/2)	287-1/2 277 (300-1/2)	295-1/2 285 (300-1/2)	306-1/2 296 (300-1/2)
LNAV MDA**	400- 1/2	390 (400-1/2)	400-5/8	390 (400-5/8)
CIRCLING ***	460-1	450 (500-1)	460-1 1/2 450 (500-1 1/2)	560-2 550 (600-2)

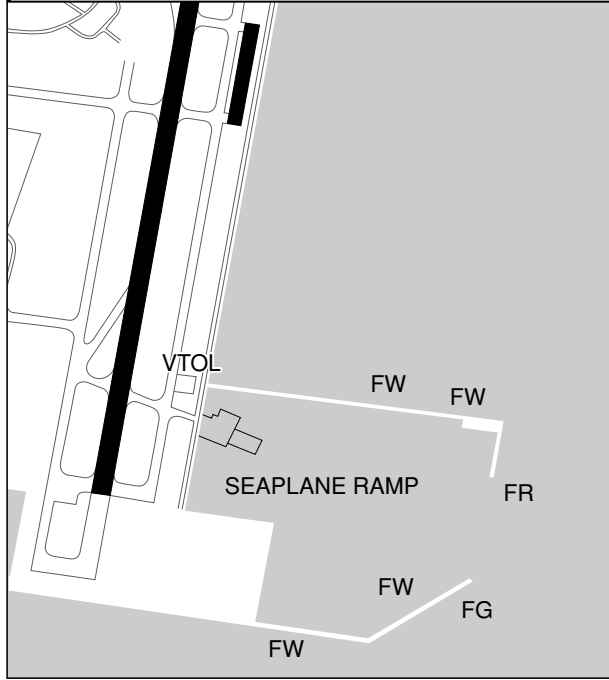
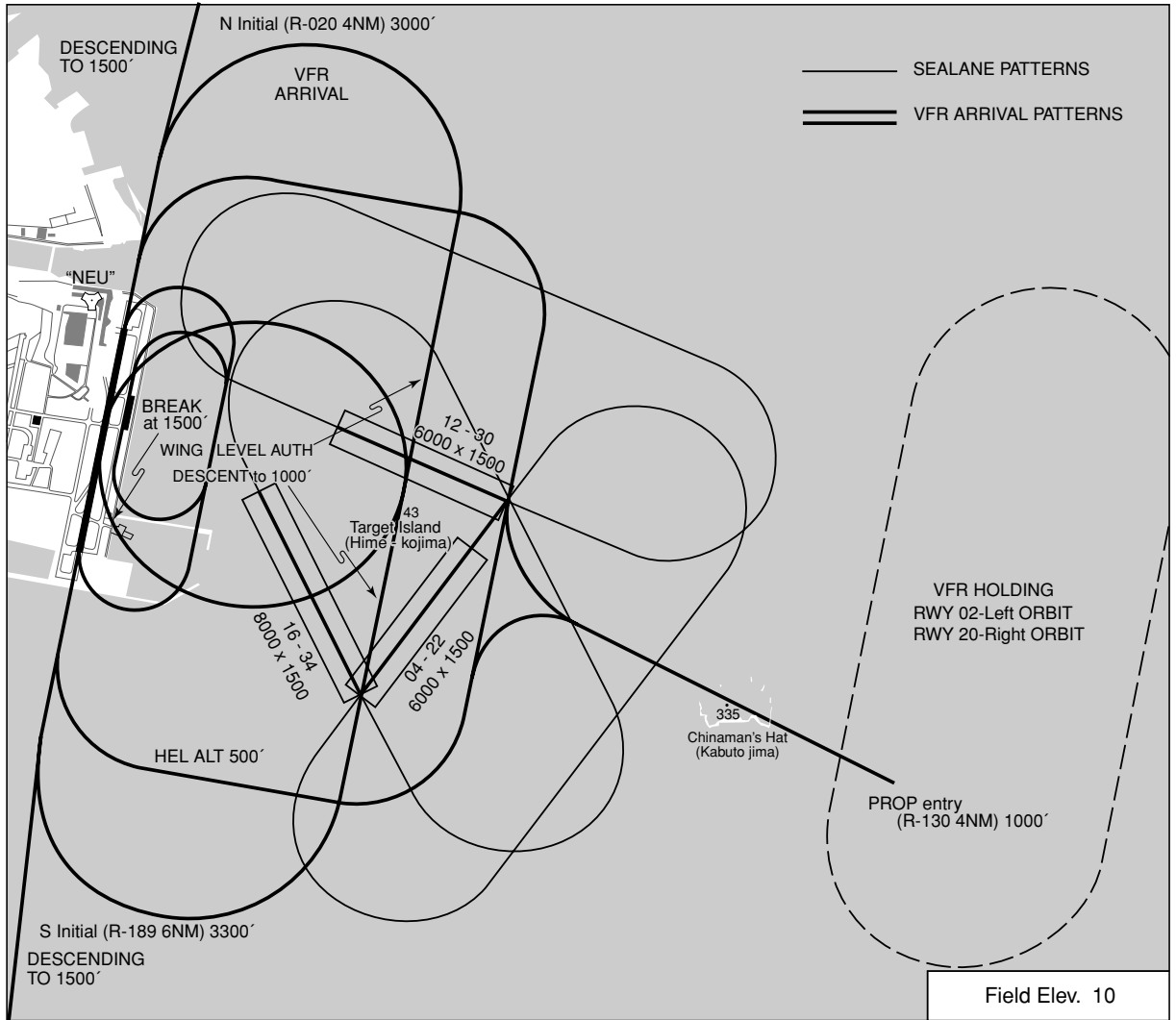
CHANGE : Update.

NOTE: REPRINTING DOD FLIP

RJOI / IWAKUNI

LDG CHART

SEALANE PATTERNS & VFR ARR PATTERNS



IWAKUNI SEALANE(TOWER) :
122.0 - 123.1x - 228.2 - 319.0

IWAKUNI APP : WEST
131.4 - 236.2
EAST 128.0 - 250.6

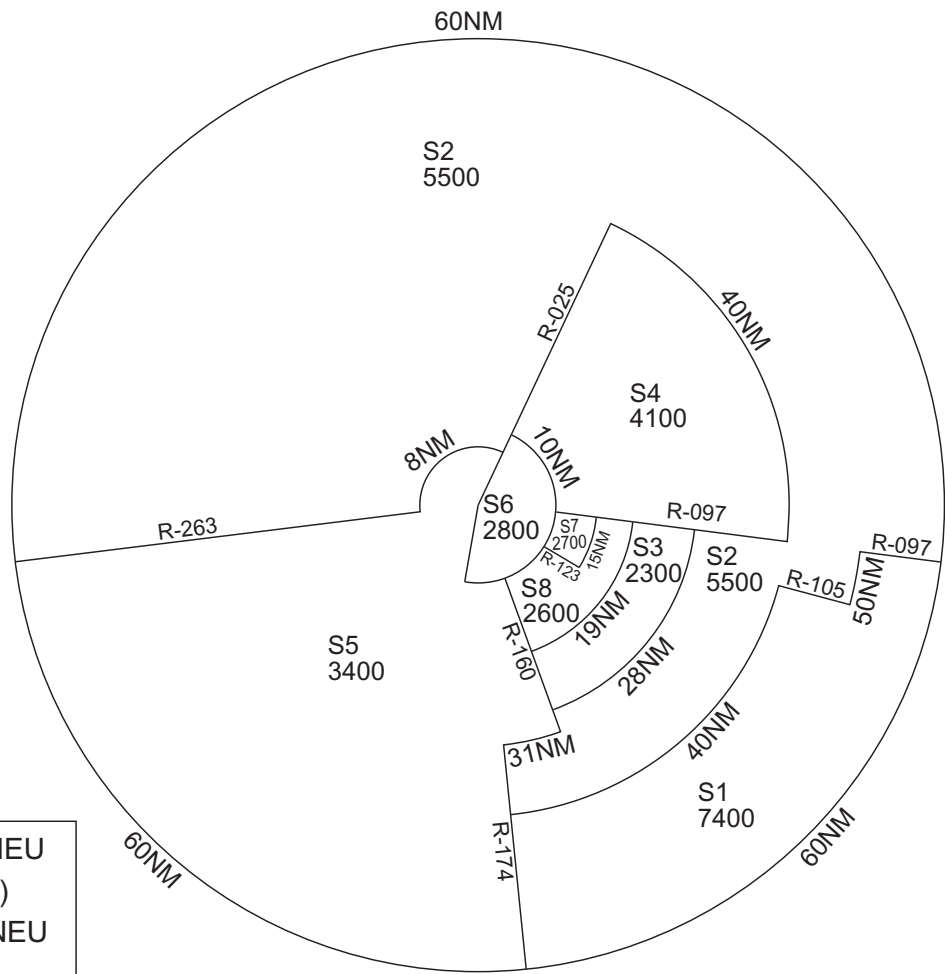
IWAKUNI TWR :
123.8 - 340.2

RJOI / IWAKUNI

Minimum Vectoring Altitude CHART

Altitude MSL	
S1	7400 ft
S2	5500 ft
S3	2300 ft
S4	4100 ft
S5	3400 ft
S6	2800 ft
S7	2700 ft
S8	2600 ft

- Centered on NEU (Iwakuni TACAN)
- Radials from NEU



CHANGE : Update.