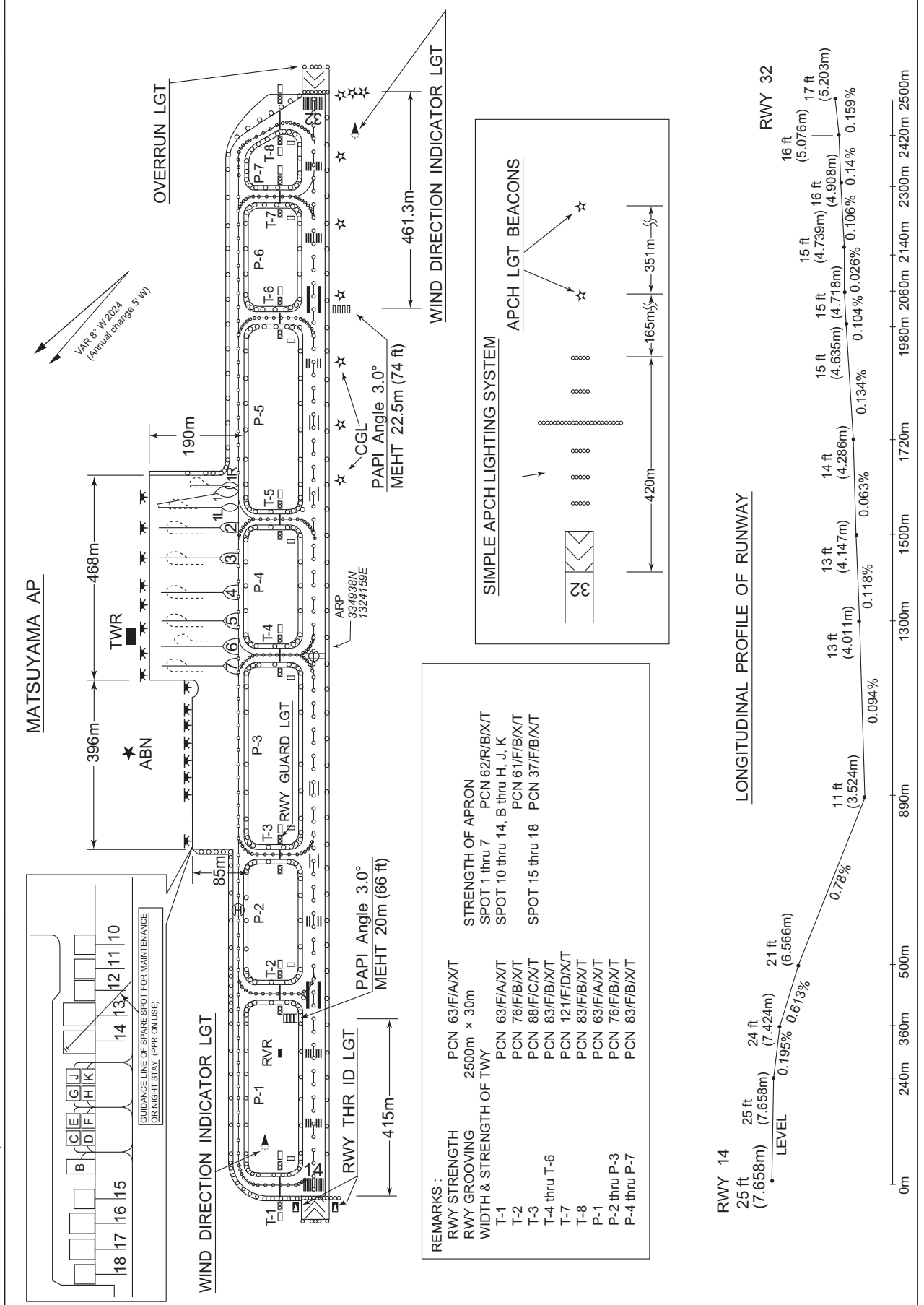


RJOM / MATSUYAMA

AD CHART

CHANGE : ARP, VAR added.



**INTENTIONALLY LEFT BLANK**

STANDARD DEPARTURE CHART -INSTRUMENT

RJOM / MATSUYAMA

SID

MATSUYAMA REVERSAL FIVE DEPARTURE

RWY32 : Climb RWY HDG to 500FT, turn left HDG 270° to 3500FT, turn left...

RWY14 : Climb RWY HDG to 1300FT, turn right HDG 270° to 3500FT, turn right...  
...direct to MYE VOR/DME.

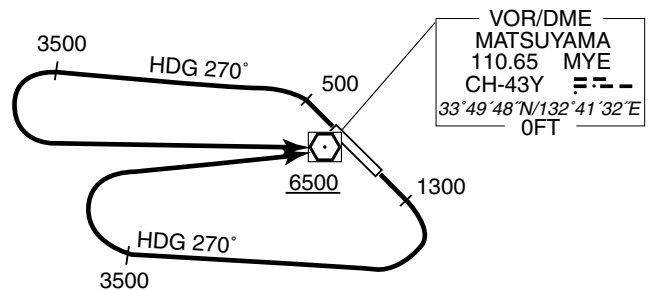
Cross MYE VOR/DME at or above 6500FT.

Note RWY14 : 7.0% climb gradient required up to 3200FT.

OBST ALT 2822FT located at 7.6NM 172° FM end of RWY14.

No turn before DER.

MATSUYAMA REVERSAL  
FIVE DEPARTURE



STANDARD DEPARTURE CHART -INSTRUMENT

RJOM / MATSUYAMA

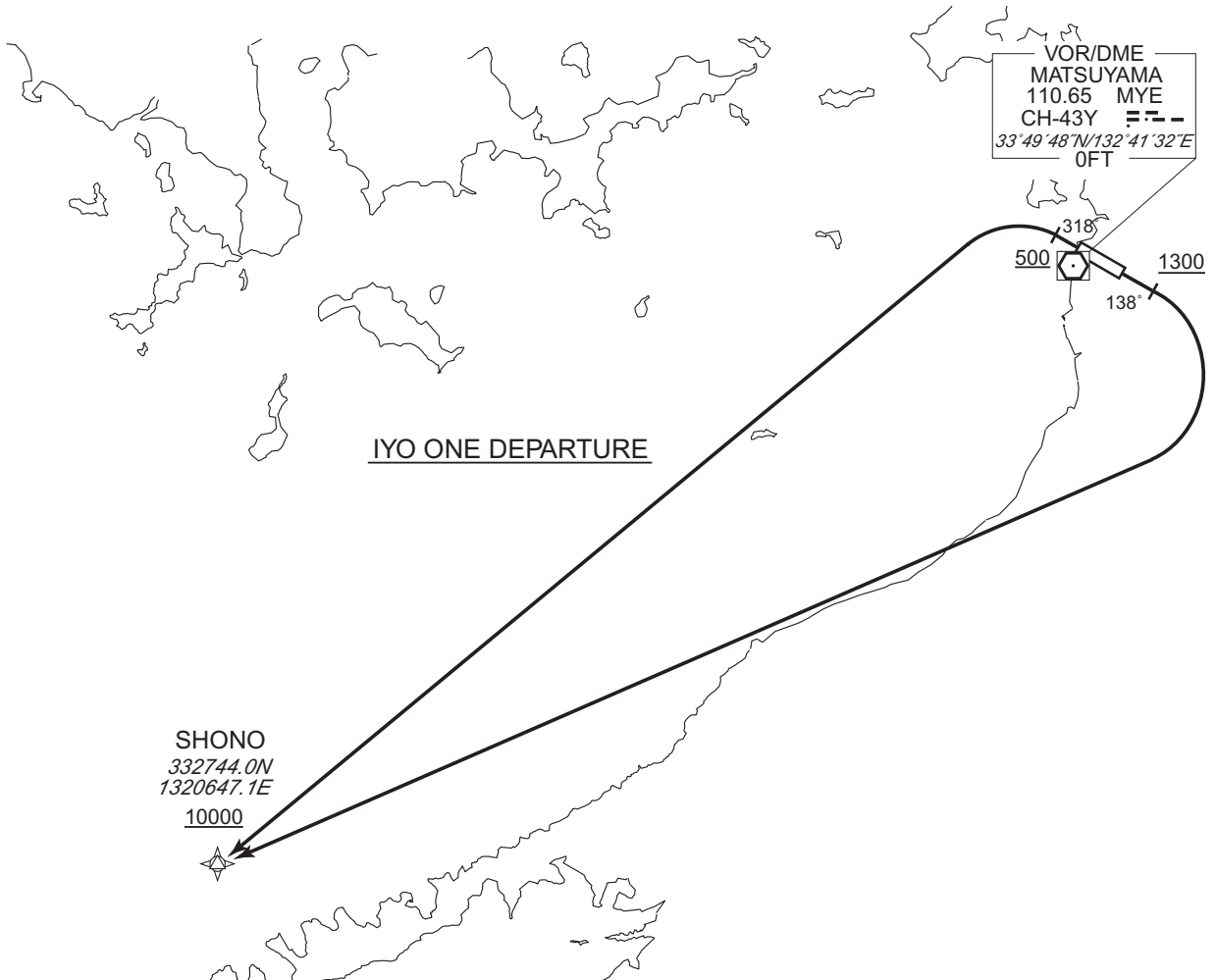
RNAV SID

IYO ONE DEPARTURE

RNP1

Note GNSS required.

VAR 7° W(2016)



IYO ONE DEPARTURE

RWY14 : Climb on HDG138° at or above 1300FT, turn right direct to SHONO at or above 10000FT.  
RWY32 : Climb on HDG318° at or above 500FT, turn left direct to SHONO at or above 10000FT.

NOTE RWY14 : 7.0% climb gradient required up to 1800FT.  
OBST ALT 1464FT located at 4.3NM 154° FM end of RWY14.  
No turn before DER.

CHANGE : Navigation Specification(Basic RNP1 → RNP1).

STANDARD DEPARTURE CHART -INSTRUMENT

RJOM / MATSUYAMA

RNAV SID

IYO ONE DEPARTURE

RWY14

| Serial Number | Path Descriptor | Waypoint Identifier | Fly Over | Course °M(°T)  | Magnetic Variation | Distance (NM) | Turn Direction | Altitude (FT) | Speed (KIAS) | Vertical Angle | Navigation Specification |
|---------------|-----------------|---------------------|----------|----------------|--------------------|---------------|----------------|---------------|--------------|----------------|--------------------------|
| 001           | VA              | -                   | -        | 138<br>(130.7) | -7.4               | -             | -              | +1300         | -            | -              | RNP1                     |
| 002           | DF              | SHONO               | -        | -              | -7.4               | -             | R              | +10000        | -            | -              | RNP1                     |

RWY32

| Serial Number | Path Descriptor | Waypoint Identifier | Fly Over | Course °M(°T)  | Magnetic Variation | Distance (NM) | Turn Direction | Altitude (FT) | Speed (KIAS) | Vertical Angle | Navigation Specification |
|---------------|-----------------|---------------------|----------|----------------|--------------------|---------------|----------------|---------------|--------------|----------------|--------------------------|
| 001           | VA              | -                   | -        | 318<br>(310.7) | -7.4               | -             | -              | +500          | -            | -              | RNP1                     |
| 002           | DF              | SHONO               | -        | -              | -7.4               | -             | L              | +10000        | -            | -              | RNP1                     |

CHANGE : Navigation Specification(Basic RNP1 → RNP1).

STANDARD DEPARTURE CHART -INSTRUMENT

RJOM / MATSUYAMA

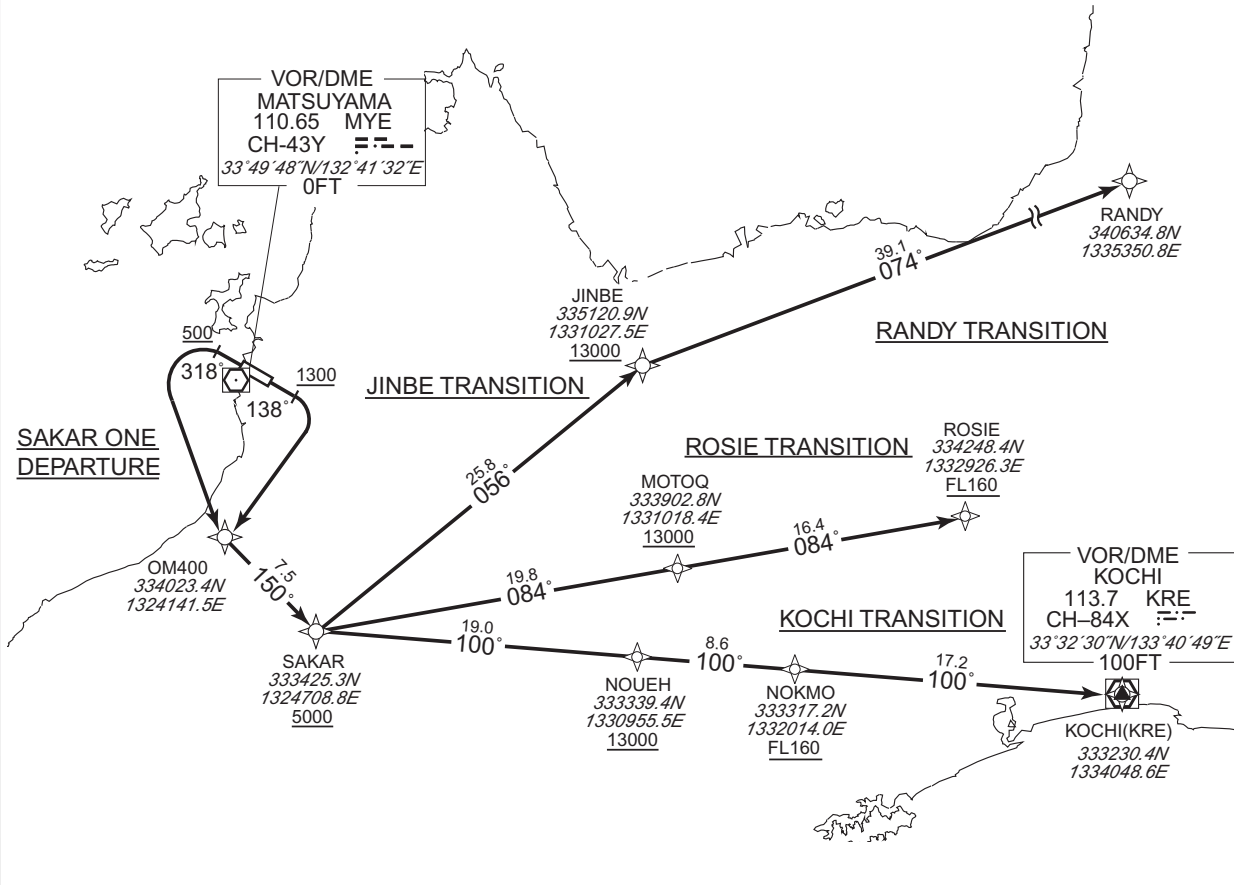
RNAV SID and TRANSITION

SAKAR ONE DEPARTURE  
RANDY TRANSITION / JINBE TRANSITION  
ROSIE TRANSITION / KOCHI TRANSITION

RNP1

Note GNSS required.

VAR 7° W(2016)



CHANGE : Navigation Specification(Basic RNP1 → RNP1).

SAKAR ONE DEPARTURE

RWY14 : Climb on HDG138° at or above 1300FT, turn right direct to OM400, to SAKAR at or above 5000FT.  
RWY32 : Climb on HDG318° at or above 500FT, turn left direct to OM400, to SAKAR at or above 5000FT.

NOTE RWY14 : 7.0% climb gradient required up to 3200FT.  
OBST ALT 2822FT located at 7.6NM 172° FM end of RWY14.  
No turn before DER.  
RWY32 : 5.3% climb gradient required up to 3600FT.  
OBST ALT 3084FT located at 10.5NM 177° FM end of RWY32.

RANDY TRANSITION

From SAKAR at or above 5000FT, to JINBE at or above 13000FT, to RANDY.

JINBE TRANSITION

From SAKAR at or above 5000FT, to JINBE at or above 13000FT.

ROSIE TRANSITION

From SAKAR at or above 5000FT, to MOTOQ at or above 13000FT, to ROSIE at or above FL160.

KOCHI TRANSITION

From SAKAR at or above 5000FT, to NOUEH at or above 13000FT, to NOKMO at or above FL160, to KRE.

STANDARD DEPARTURE CHART -INSTRUMENT

RJOM / MATSUYAMA

RNAV SID and TRANSITION

SAKAR ONE DEPARTURE

RWY14

| Serial Number | Path Descriptor | Waypoint Identifier | Fly Over | Course °M(°T)  | Magnetic Variation | Distance (NM) | Turn Direction | Altitude (FT) | Speed (KIAS) | Vertical Angle | Navigation Specification |
|---------------|-----------------|---------------------|----------|----------------|--------------------|---------------|----------------|---------------|--------------|----------------|--------------------------|
| 001           | VA              | -                   | -        | 138<br>(130.7) | -7.4               | -             | -              | +1300         | -            | -              | RNP1                     |
| 002           | DF              | OM400               | -        | -              | -7.4               | -             | R              | -             | -            | -              | RNP1                     |
| 003           | TF              | SAKAR               | -        | 150<br>(142.7) | -7.4               | 7.5           | -              | +5000         | -            | -              | RNP1                     |

RWY32

| Serial Number | Path Descriptor | Waypoint Identifier | Fly Over | Course °M(°T)  | Magnetic Variation | Distance (NM) | Turn Direction | Altitude (FT) | Speed (KIAS) | Vertical Angle | Navigation Specification |
|---------------|-----------------|---------------------|----------|----------------|--------------------|---------------|----------------|---------------|--------------|----------------|--------------------------|
| 001           | VA              | -                   | -        | 318<br>(310.7) | -7.4               | -             | -              | +500          | -            | -              | RNP1                     |
| 002           | DF              | OM400               | -        | -              | -7.4               | -             | L              | -             | -            | -              | RNP1                     |
| 003           | TF              | SAKAR               | -        | 150<br>(142.7) | -7.4               | 7.5           | -              | +5000         | -            | -              | RNP1                     |

RANDY TRANSITION

| Serial Number | Path Descriptor | Waypoint Identifier | Fly Over | Course °M(°T)  | Magnetic Variation | Distance (NM) | Turn Direction | Altitude (FT) | Speed (KIAS) | Vertical Angle | Navigation Specification |
|---------------|-----------------|---------------------|----------|----------------|--------------------|---------------|----------------|---------------|--------------|----------------|--------------------------|
| 001           | IF              | SAKAR               | -        | -              | -7.4               | -             | -              | +5000         | -            | -              | RNP1                     |
| 002           | TF              | JINBE               | -        | 056<br>(048.8) | -7.4               | 25.8          | -              | +13000        | -            | -              | RNP1                     |
| 003           | TF              | RANDY               | -        | 074<br>(066.9) | -7.4               | 39.1          | -              | -             | -            | -              | RNP1                     |

JINBE TRANSITION

| Serial Number | Path Descriptor | Waypoint Identifier | Fly Over | Course °M(°T)  | Magnetic Variation | Distance (NM) | Turn Direction | Altitude (FT) | Speed (KIAS) | Vertical Angle | Navigation Specification |
|---------------|-----------------|---------------------|----------|----------------|--------------------|---------------|----------------|---------------|--------------|----------------|--------------------------|
| 001           | IF              | SAKAR               | -        | -              | -7.4               | -             | -              | +5000         | -            | -              | RNP1                     |
| 002           | TF              | JINBE               | -        | 056<br>(048.8) | -7.4               | 25.8          | -              | +13000        | -            | -              | RNP1                     |

CHANGE : Navigation Specification(Basic RNP1 → RNP1).

STANDARD DEPARTURE CHART -INSTRUMENT

RJOM / MATSUYAMA

RNAV SID and TRANSITION

**ROSIE TRANSITION**

| Serial Number | Path Descriptor | Waypoint Identifier | Fly Over | Course °M(°T)  | Magnetic Variation | Distance (NM) | Turn Direction | Altitude (FT) | Speed (KIAS) | Vertical Angle | Navigation Specification |
|---------------|-----------------|---------------------|----------|----------------|--------------------|---------------|----------------|---------------|--------------|----------------|--------------------------|
| 001           | IF              | SAKAR               | -        | -              | -7.4               | -             | -              | +5000         | -            | -              | RNP1                     |
| 002           | TF              | MOTOQ               | -        | 084<br>(076.4) | -7.4               | 19.8          | -              | +13000        | -            | -              | RNP1                     |
| 003           | TF              | ROSIE               | -        | 084<br>(076.6) | -7.4               | 16.4          | -              | +FL160        | -            | -              | RNP1                     |

**KOCHI TRANSITION**

| Serial Number | Path Descriptor | Waypoint Identifier | Fly Over | Course °M(°T)  | Magnetic Variation | Distance (NM) | Turn Direction | Altitude (FT) | Speed (KIAS) | Vertical Angle | Navigation Specification |
|---------------|-----------------|---------------------|----------|----------------|--------------------|---------------|----------------|---------------|--------------|----------------|--------------------------|
| 001           | IF              | SAKAR               | -        | -              | -7.4               | -             | -              | +5000         | -            | -              | RNP1                     |
| 002           | TF              | NOUEH               | -        | 100<br>(092.2) | -7.4               | 19.0          | -              | +13000        | -            | -              | RNP1                     |
| 003           | TF              | NOKMO               | -        | 100<br>(092.4) | -7.4               | 8.6           | -              | +FL160        | -            | -              | RNP1                     |
| 004           | TF              | KRE                 | -        | 100<br>(092.5) | -7.4               | 17.2          | -              | -             | -            | -              | RNP1                     |

CHANGE : Navigation Specification(Basic RNP1 → RNP1).



STANDARD DEPARTURE CHART -INSTRUMENT

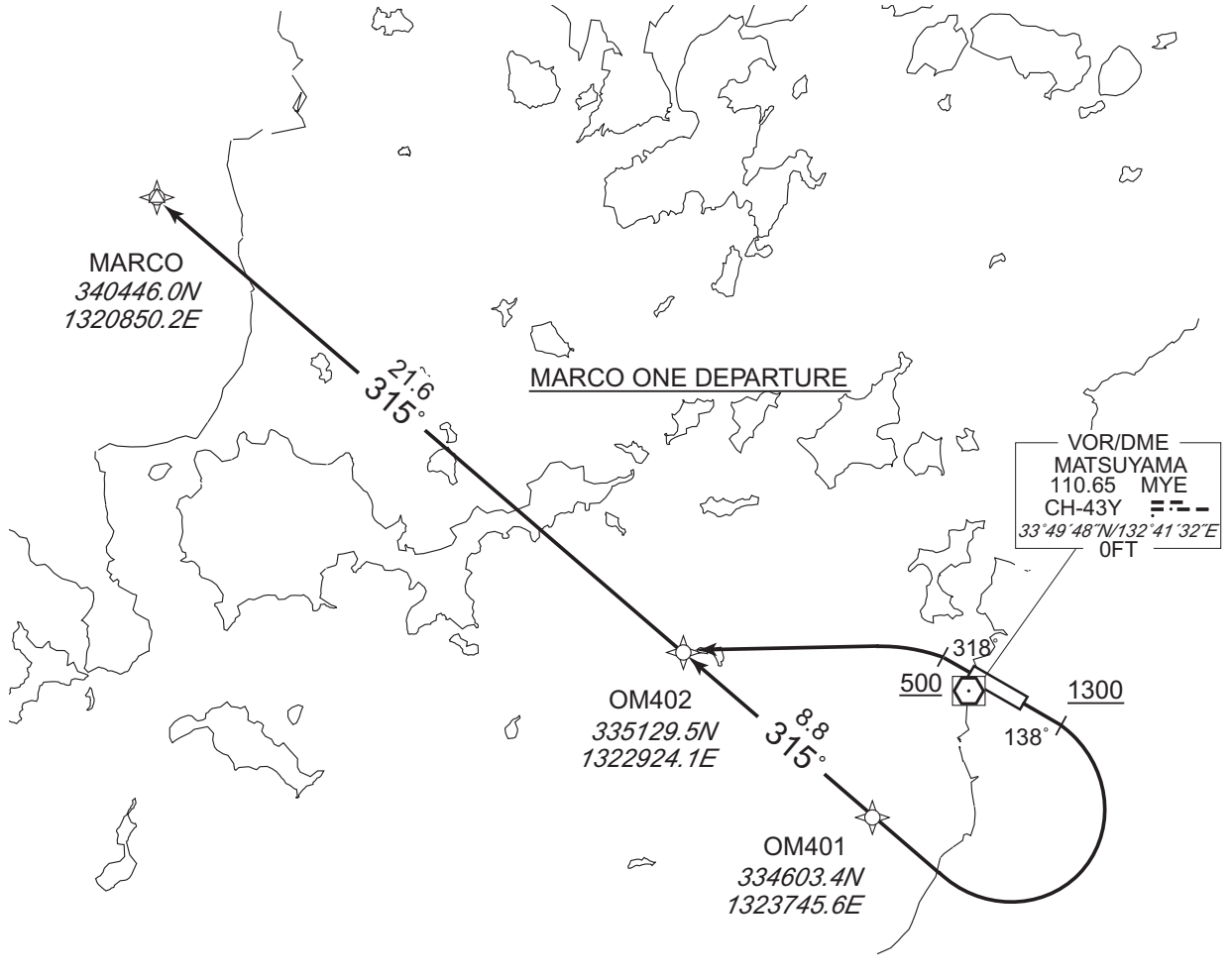
RJOM / MATSUYAMA

RNAV SID

|                     |      |
|---------------------|------|
| MARCO ONE DEPARTURE | RNP1 |
|---------------------|------|

Note GNSS required.

VAR 7° W(2016)



MARCO ONE DEPARTURE

RWY14 : Climb on HDG138° at or above 1300FT, turn right direct to OM401, to OM402, to MARCO.  
 RWY32 : Climb on HDG318° at or above 500FT, turn left direct to OM402, to MARCO.

NOTE RWY14 : 7.0% climb gradient required up to 1800FT.  
 OBST ALT 1464FT located at 4.3NM 154° FM end of RWY14.  
 No turn before DER.

CHANGE : Navigation Specification(Basic RNP1 → RNP1).

STANDARD DEPARTURE CHART -INSTRUMENT

RJOM / MATSUYAMA

RNAV SID

MARCO ONE DEPARTURE

RWY14

| Serial Number | Path Descriptor | Waypoint Identifier | Fly Over | Course °M(°T)  | Magnetic Variation | Distance (NM) | Turn Direction | Altitude (FT) | Speed (KIAS) | Vertical Angle | Navigation Specification |
|---------------|-----------------|---------------------|----------|----------------|--------------------|---------------|----------------|---------------|--------------|----------------|--------------------------|
| 001           | VA              | -                   | -        | 138<br>(130.7) | -7.4               | -             | -              | +1300         | -            | -              | RNP1                     |
| 002           | DF              | OM401               | -        | -              | -7.4               | -             | R              | -             | -            | -              | RNP1                     |
| 003           | TF              | OM402               | -        | 315<br>(308.1) | -7.4               | 8.8           | -              | -             | -            | -              | RNP1                     |
| 004           | TF              | MARCO               | -        | 315<br>(308.1) | -7.4               | 21.6          | -              | -             | -            | -              | RNP1                     |

RWY32

| Serial Number | Path Descriptor | Waypoint Identifier | Fly Over | Course °M(°T)  | Magnetic Variation | Distance (NM) | Turn Direction | Altitude (FT) | Speed (KIAS) | Vertical Angle | Navigation Specification |
|---------------|-----------------|---------------------|----------|----------------|--------------------|---------------|----------------|---------------|--------------|----------------|--------------------------|
| 001           | VA              | -                   | -        | 318<br>(310.7) | -7.4               | -             | -              | +500          | -            | -              | RNP1                     |
| 002           | DF              | OM402               | -        | -              | -7.4               | -             | L              | -             | -            | -              | RNP1                     |
| 003           | TF              | MARCO               | -        | 315<br>(308.1) | -7.4               | 21.6          | -              | -             | -            | -              | RNP1                     |

CHANGE : Navigation Specification(Basic RNP1 → RNP1).

STANDARD ARRIVAL CHART - INSTRUMENT

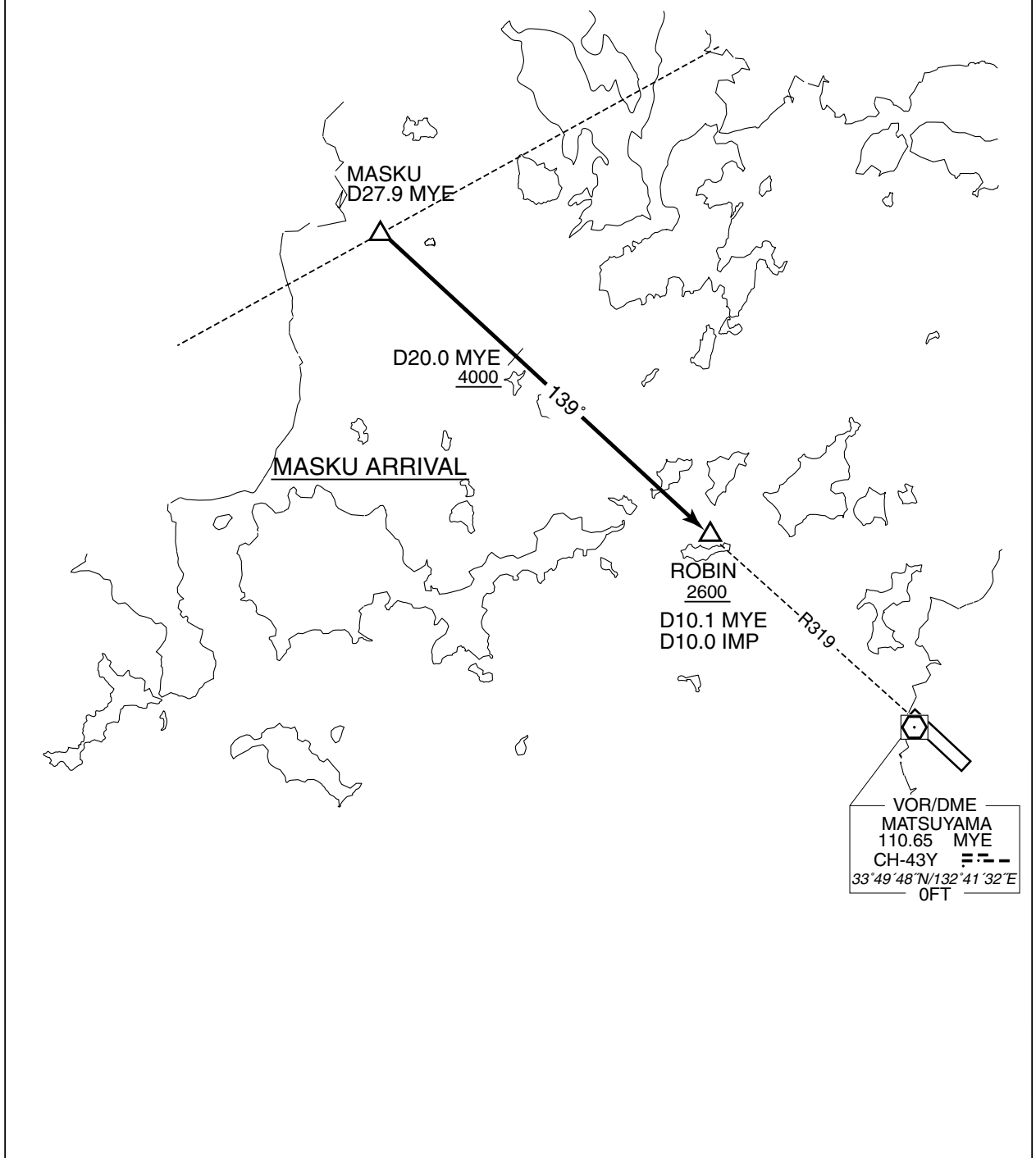
RJOM / MATSUYAMA

STAR

MASKU ARRIVAL

From over MASKU, via MYE R319 to ROBIN.

Cross MASKU at or above 5000FT, cross MYE R319/20.0DME at or above 4000FT, cross ROBIN at or above 2600FT.



STANDARD ARRIVAL CHART -INSTRUMENT

RJOM / MATSUYAMA

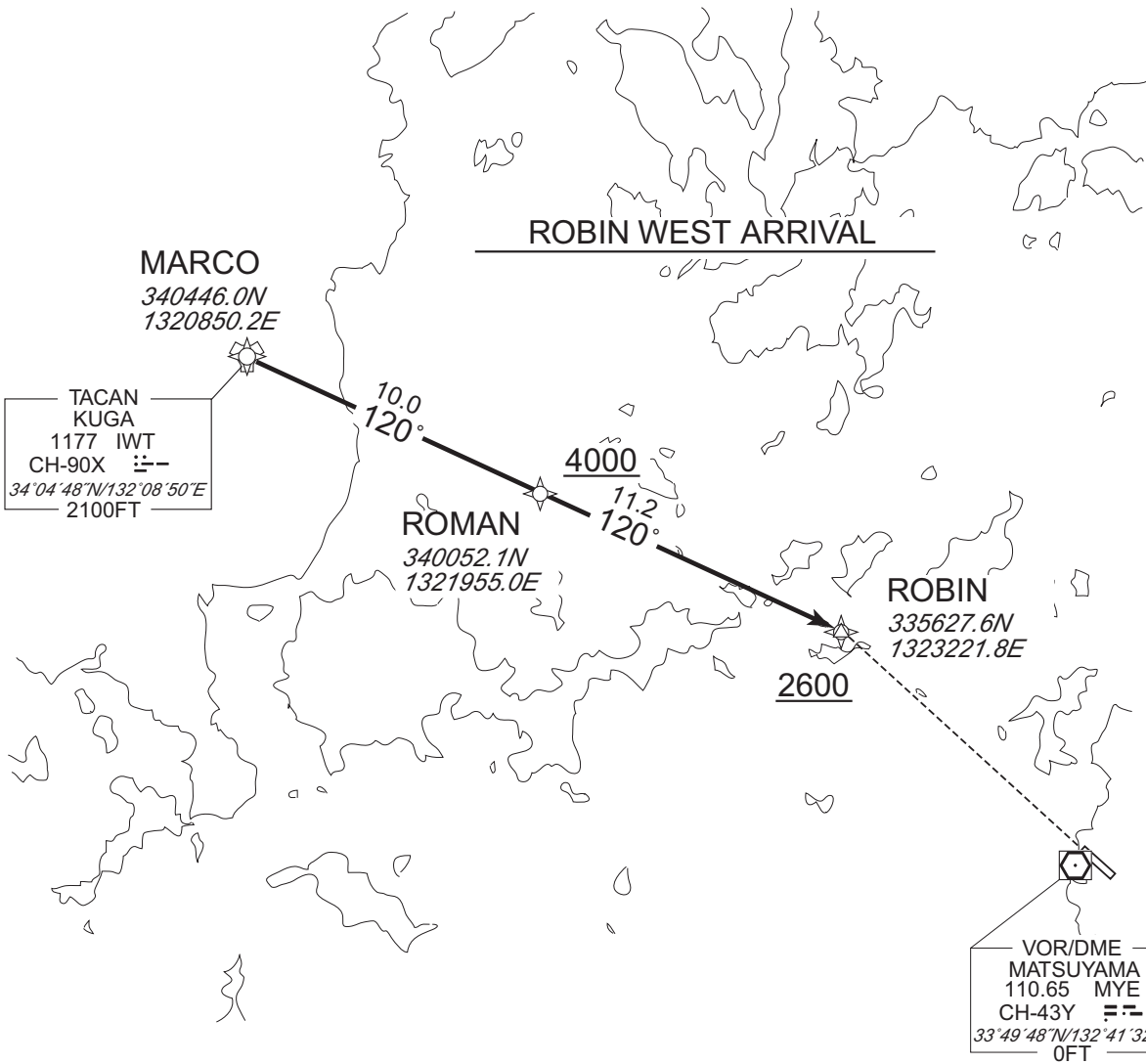
RNAV STAR RWY14

ROBIN WEST ARRIVAL

RNP1

Note GNSS required.

VAR 7°W (2016)



CHANGE : Navigation Specification(Basic RNP1 → RNP1).

STANDARD ARRIVAL CHART -INSTRUMENT

RJOM / MATSUYAMA

RNAV STAR RWY14

ROBIN WEST ARRIVAL

From MARCO, to ROMAN at or above 4000FT, to ROBIN at or above 2600FT.

| Serial Number | Path Descriptor | Waypoint Identifier | Fly Over | Course °M(°T)  | Magnetic Variation | Distance (NM) | Turn Direction | Altitude (FT) | Speed (KIAS) | Vertical Angle | Navigation Specification |
|---------------|-----------------|---------------------|----------|----------------|--------------------|---------------|----------------|---------------|--------------|----------------|--------------------------|
| 001           | IF              | MARCO               | -        | -              | -7.4               | -             | -              | -             | -            | -              | RNP1                     |
| 002           | TF              | ROMAN               | -        | 120<br>(113.0) | -7.4               | 10.0          | -              | +4000         | -            | -              | RNP1                     |
| 003           | TF              | ROBIN               | -        | 120<br>(113.1) | -7.4               | 11.2          | -              | +2600         | -            | -              | RNP1                     |

CHANGE : Navigation Specification(Basic RNP1 → RNP1).

STANDARD ARRIVAL CHART -INSTRUMENT

RJOM / MATSUYAMA

RNAV STAR RWY14/32

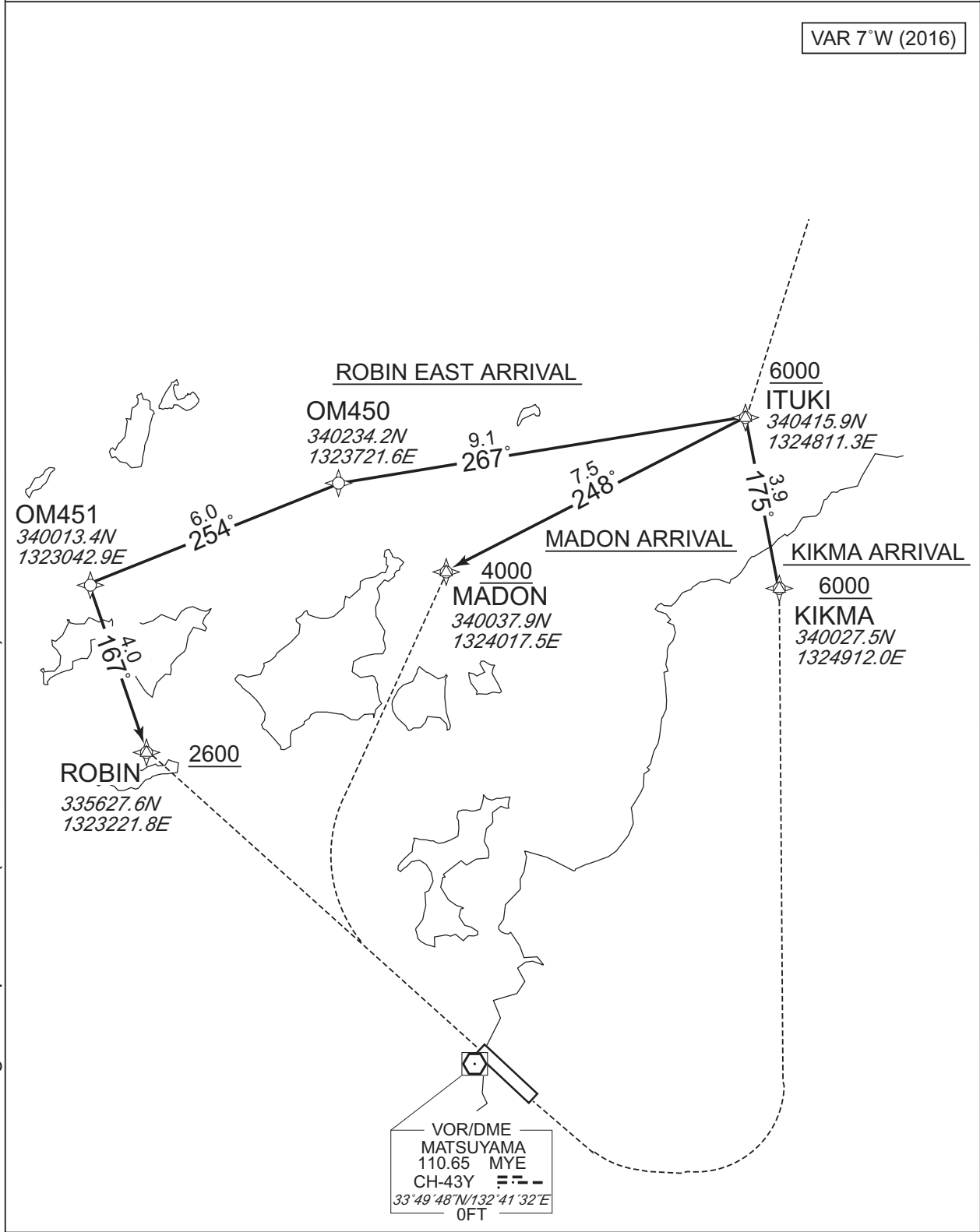
ROBIN EAST ARRIVAL  
MADON ARRIVAL  
KIKMA ARRIVAL

RNP1

Note GNSS required.

VAR 7°W (2016)

CHANGE : Navigation Specification(Basic RNP1 → RNP1).



STANDARD ARRIVAL CHART -INSTRUMENT

RJOM / MATSUYAMA

RNAV STAR RWY14/32

ROBIN EAST ARRIVAL

From ITUKI at or above 6000FT, to OM450, to OM451, to ROBIN at or above 2600FT.

| Serial Number | Path Descriptor | Waypoint Identifier | Fly Over | Course °M(°T)  | Magnetic Variation | Distance (NM) | Turn Direction | Altitude (FT) | Speed (KIAS) | Vertical Angle | Navigation Specification |
|---------------|-----------------|---------------------|----------|----------------|--------------------|---------------|----------------|---------------|--------------|----------------|--------------------------|
| 001           | IF              | ITUKI               | -        | -              | -7.4               | -             | -              | +6000         | -            | -              | RNP1                     |
| 002           | TF              | OM450               | -        | 267<br>(259.4) | -7.4               | 9.1           | -              | -             | -            | -              | RNP1                     |
| 003           | TF              | OM451               | -        | 254<br>(247.0) | -7.4               | 6.0           | -              | -             | -            | -              | RNP1                     |
| 004           | TF              | ROBIN               | -        | 167<br>(160.0) | -7.4               | 4.0           | -              | +2600         | -            | -              | RNP1                     |

MADON ARRIVAL

From ITUKI at or above 6000FT, to MADON at or above 4000FT.

| Serial Number | Path Descriptor | Waypoint Identifier | Fly Over | Course °M(°T)  | Magnetic Variation | Distance (NM) | Turn Direction | Altitude (FT) | Speed (KIAS) | Vertical Angle | Navigation Specification |
|---------------|-----------------|---------------------|----------|----------------|--------------------|---------------|----------------|---------------|--------------|----------------|--------------------------|
| 001           | IF              | ITUKI               | -        | -              | -7.4               | -             | -              | +6000         | -            | -              | RNP1                     |
| 002           | TF              | MADON               | -        | 248<br>(241.0) | -7.4               | 7.5           | -              | +4000         | -            | -              | RNP1                     |

KIKMA ARRIVAL

From ITUKI at or above 6000FT, to KIKMA at or above 6000FT.

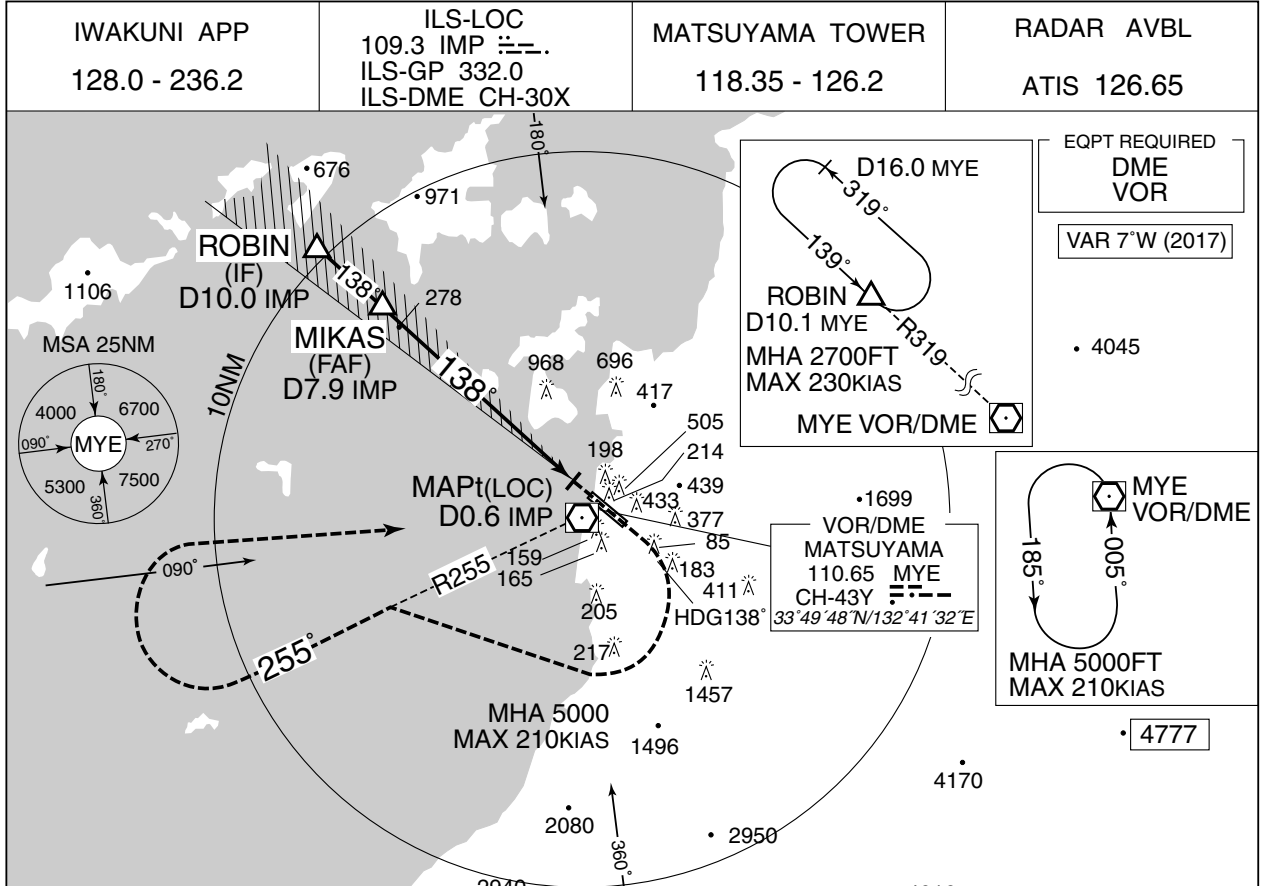
| Serial Number | Path Descriptor | Waypoint Identifier | Fly Over | Course °M(°T)  | Magnetic Variation | Distance (NM) | Turn Direction | Altitude (FT) | Speed (KIAS) | Vertical Angle | Navigation Specification |
|---------------|-----------------|---------------------|----------|----------------|--------------------|---------------|----------------|---------------|--------------|----------------|--------------------------|
| 001           | IF              | ITUKI               | -        | -              | -7.4               | -             | -              | +6000         | -            | -              | RNP1                     |
| 002           | TF              | KIKMA               | -        | 175<br>(167.6) | -7.4               | 3.9           | -              | +6000         | -            | -              | RNP1                     |

CHANGE : Navigation Specification(Basic RNP1 → RNP1).

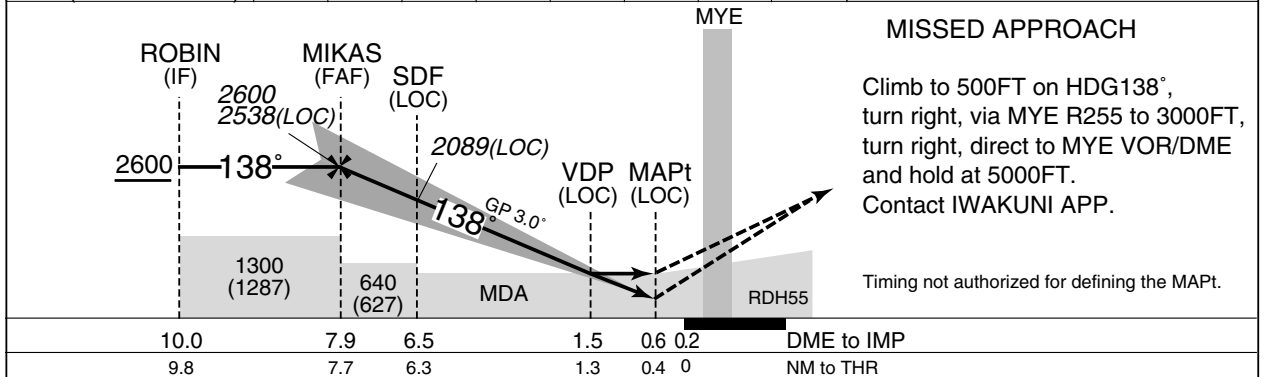
INSTRUMENT APPROACH CHART

RJOM / MATSUYAMA

ILS Z or LOC Z RWY14



|                      |      |      |      |      |      |     |     |      |
|----------------------|------|------|------|------|------|-----|-----|------|
| NM to IMP            | FAF  | 7    | 6    | 5    | 4    | 3   | 2   | MAPt |
| ALT (3.0° APCH Path) | 2538 | 2247 | 1928 | 1610 | 1292 | 973 | 654 | -    |



|                                      |           |              |           |             |           |      |
|--------------------------------------|-----------|--------------|-----------|-------------|-----------|------|
| Missed APCH climb gradient MNM 4.0%. |           |              |           |             |           |      |
| MINIMA                               |           | THR elev. 25 |           | AD elev. 13 |           |      |
| CAT                                  | CAT I     |              | LOC       |             | CIRCLING  |      |
|                                      | DA(H)     | RVR/CMV      | MDA(H)    | RVR/CMV     | MDA(H)    | VIS  |
| A                                    | 225 (200) | 1000         | 470 (457) | 1500        | 520 (507) | 1600 |
| B                                    |           |              |           |             |           | 2400 |
| C                                    |           |              |           | 2000        | 570 (557) | 3200 |
| D                                    |           |              |           |             |           |      |

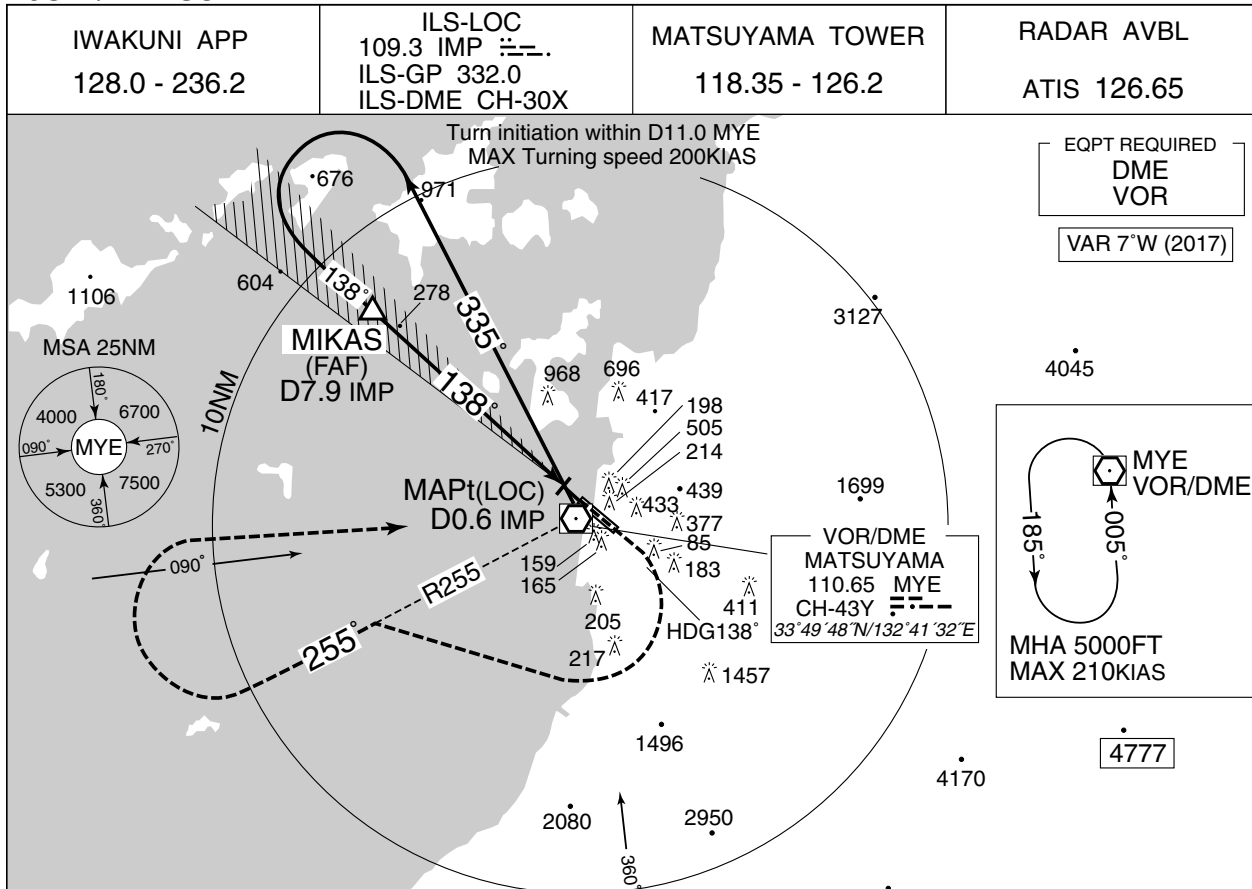
MINIMA with Missed APCH climb gradient of 2.5% are not established.  
Circling to WEST side of RWY only.



INSTRUMENT APPROACH CHART

RJOM / MATSUYAMA

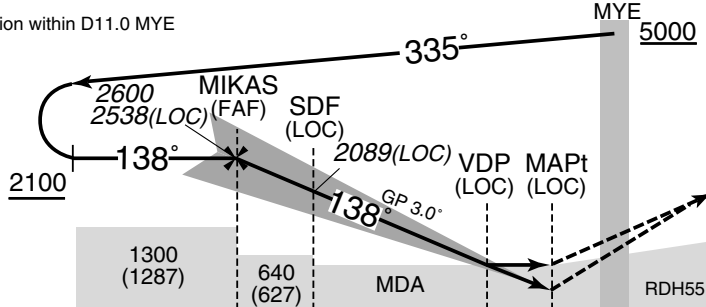
ILS Y or LOC Y RWY14



MIKAS(FAF): 335506.61N/1323417.74E

|                      |      |      |      |      |      |     |     |      |
|----------------------|------|------|------|------|------|-----|-----|------|
| NM to IMP            | FAF  | 7    | 6    | 5    | 4    | 3   | 2   | MAPt |
| ALT (3.0° APCH Path) | 2538 | 2247 | 1928 | 1610 | 1292 | 973 | 654 | -    |

Turn initiation within D11.0 MYE



MISSED APPROACH

Climb to 500FT on HDG138°, turn right, via MYE R255 to 3000FT, turn right, direct to MYE VOR/DME and hold at 5000FT. Contact IWAKUNI APP.

Timing not authorized for defining the MAPt.

|     |     |     |     |     |            |
|-----|-----|-----|-----|-----|------------|
| 7.9 | 6.5 | 1.5 | 0.6 | 0.2 | DME to IMP |
| 7.7 | 6.3 | 1.3 | 0.4 | 0   | NM to THR  |

Missed APCH climb gradient MNM 4.0%.

|        |           |              |           |             |           |      |
|--------|-----------|--------------|-----------|-------------|-----------|------|
| MINIMA |           | THR elev. 25 |           | AD elev. 13 |           |      |
| CAT    | CAT I     |              | LOC       |             | CIRCLING  |      |
|        | DA(H)     | RVR/CMV      | MDA(H)    | RVR/CMV     | MDA(H)    | VIS  |
| A      | 225 (200) | 1000         | 470 (457) | 1500        | 520 (507) | 1600 |
| B      |           |              |           |             |           | 2400 |
| C      |           |              |           | 2000        | 570 (557) | 3200 |
| D      |           |              |           |             |           |      |

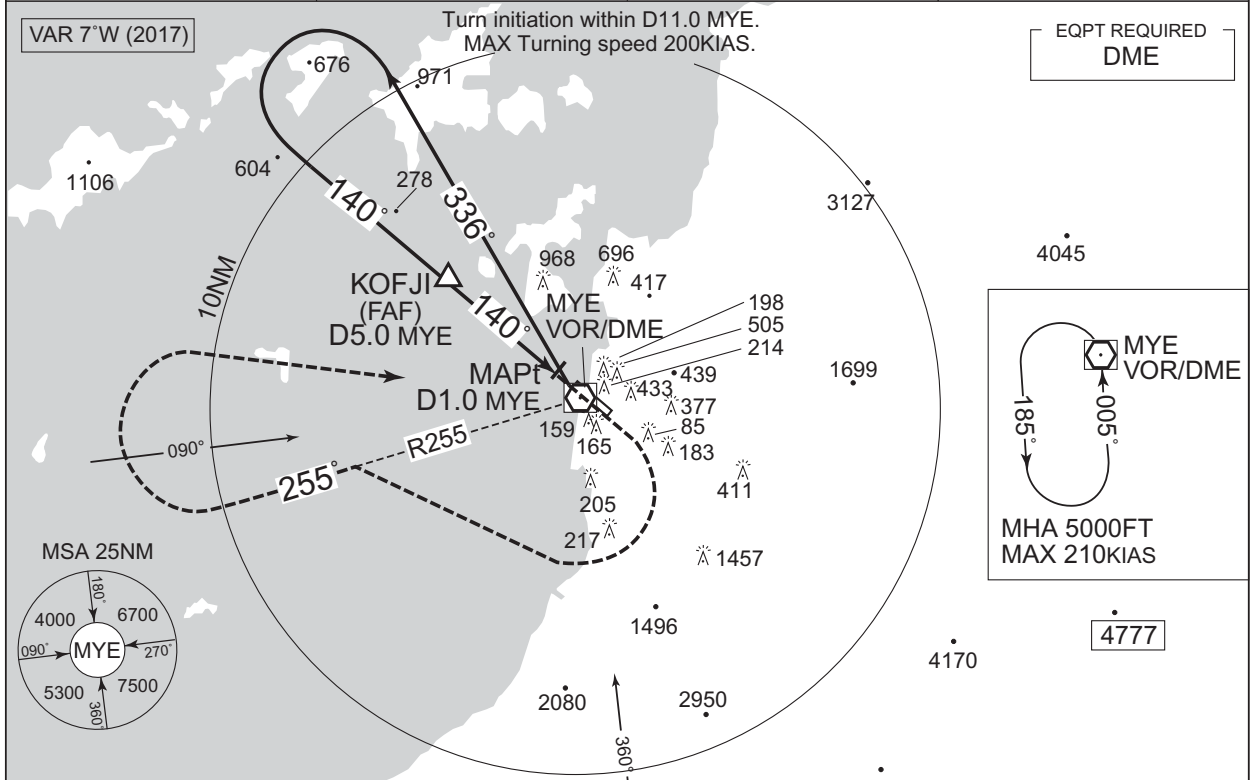
MINIMA with Missed APCH climb gradient of 2.5% are not established. Circling to WEST side of RWY only.

INSTRUMENT APPROACH CHART

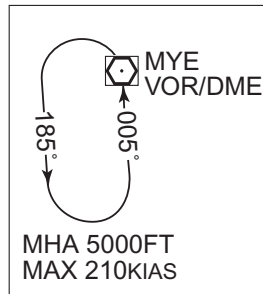
RJOM / MATSUYAMA

VOR RWY14

|                              |   |                                   |                           |
|------------------------------|---|-----------------------------------|---------------------------|
| IWAKUNI APP<br>128.0 - 236.2 | MATSUYAMA VOR/DME<br>110.65 MYE<br>CH-43Y<br>33°49'48"N/132°41'32"E | MATSUYAMA TOWER<br>118.35 - 126.2 | RADAR AVBL<br>ATIS 126.65 |
|------------------------------|---|-----------------------------------|---------------------------|

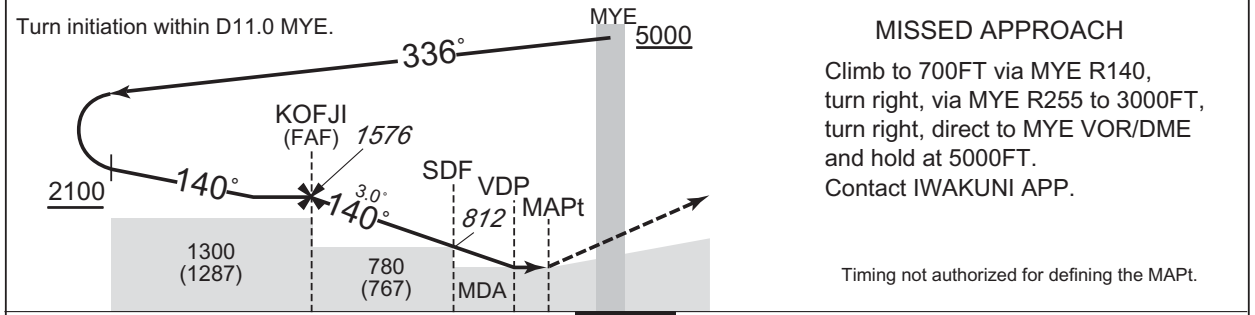


EQPT REQUIRED  
DME



KOFJI(FAF): 335310.18N/1323705.14E 2940•

|                      |      |      |     |     |      |
|----------------------|------|------|-----|-----|------|
| NM to MYE            | FAF  | 4    | 3   | 2   | MAPt |
| ALT (3.0° APCH Path) | 1576 | 1258 | 939 | 621 | -    |



**MISSED APPROACH**  
Climb to 700FT via MYE R140, turn right, via MYE R255 to 3000FT, turn right, direct to MYE VOR/DME and hold at 5000FT.  
Contact IWAKUNI APP.

Timing not authorized for defining the MAPt.

|     |     |     |     |     |            |
|-----|-----|-----|-----|-----|------------|
| 5.0 | 2.6 | 1.6 | 1.0 | 0.3 | DME to MYE |
| 4.7 | 2.3 | 1.3 | 0.7 | 0   | NM to THR  |

Missed APCH climb gradient MNM 4.0%.

| MINIMA |           | THR elev. 25 | AD elev. 13 |        |
|--------|-----------|--------------|-------------|--------|
| CAT    | CIRCLING  |              | VIS         |        |
|        | MDA(H)    | RVR/CMV      |             | MDA(H) |
| A      | 470 (457) | 1500         | 520 (507)   | 1600   |
| B      |           |              |             |        |
| C      |           |              |             |        |
| D      | 2000      |              | 570 (557)   | 3200   |

MINIMA with Missed APCH climb gradient of 2.5% are not established.  
Circling to WEST side of RWY only.

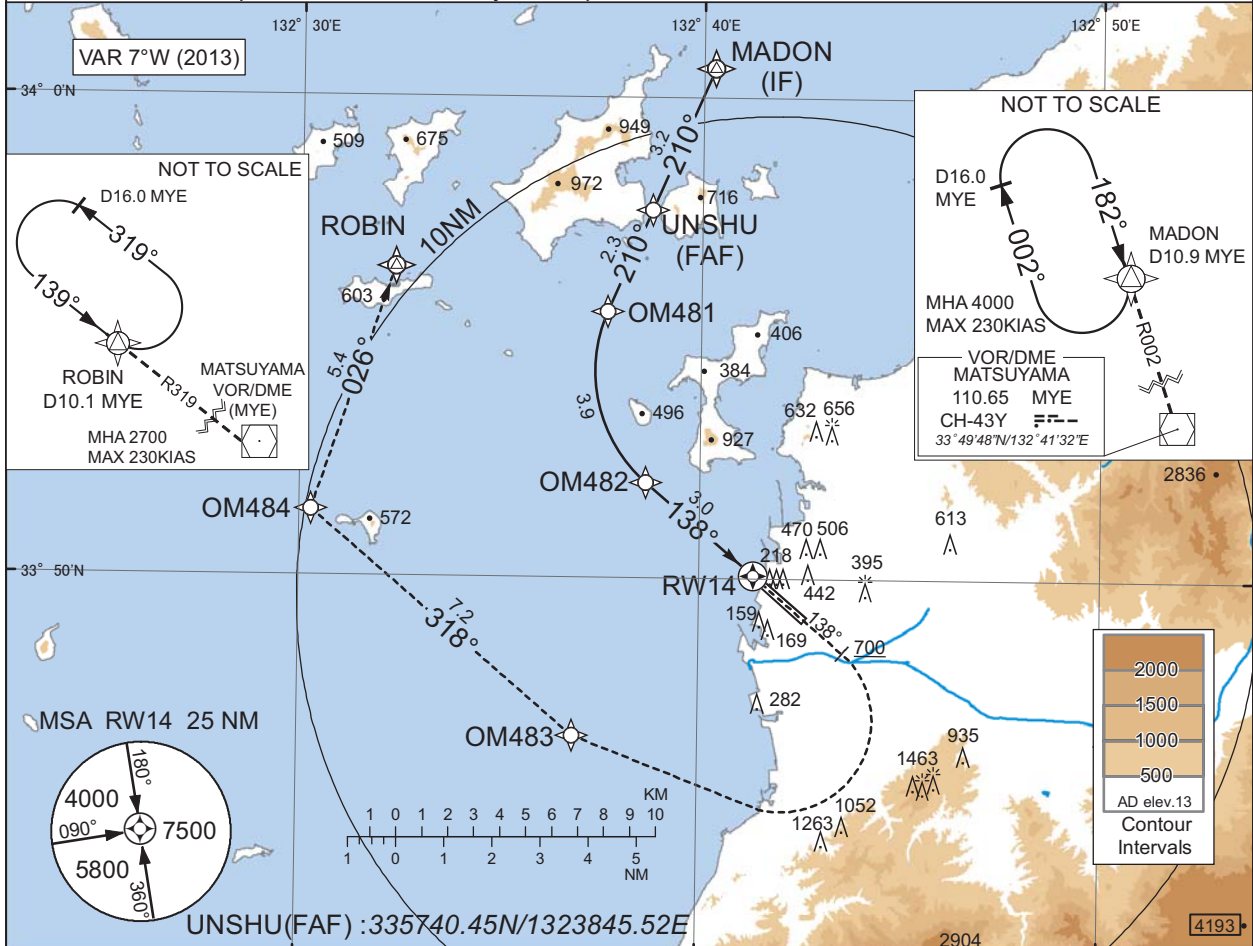
INSTRUMENT APPROACH CHART

RJOM / MATSUYAMA

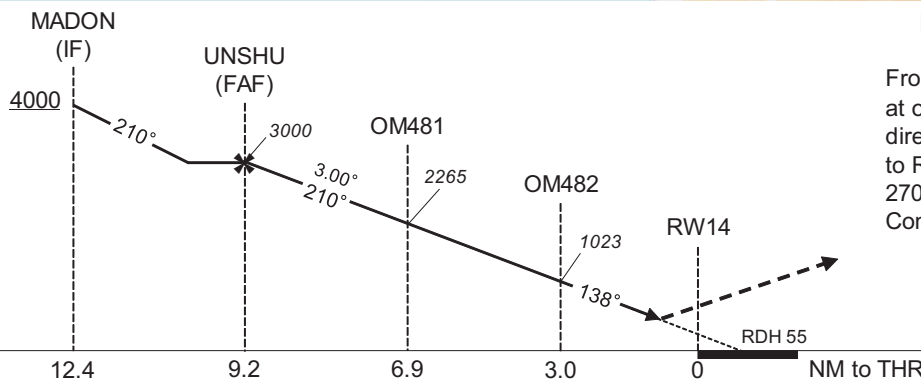
RNP RWY14(AR)

|                              |                        |                                   |                           |
|------------------------------|------------------------|-----------------------------------|---------------------------|
| IWAKUNI APP<br>128.0 - 236.2 | RNP AR<br>RF required. | MATSUYAMA TOWER<br>118.35 - 126.2 | RADAR AVBL<br>ATIS 126.65 |
|------------------------------|------------------------|-----------------------------------|---------------------------|

For uncompensated Baro-VNAV systems, procedure not authorized below -5°C / above 50°C



CHANGE : PROC renamed. Requirement for RNP.



**MISSED APPROACH**  
From RWY14 on track 138°, at or above 700FT turn right, direct to OM483, to OM484, to ROBIN and hold at 2700FT. Contact IWAKUNI APP.

Missed APCH climb gradient MNM 5.0%

| MINIMA | THR elev. 25 | AD elev. 13 |
|--------|--------------|-------------|
| CAT    | RNP 0.30     |             |
|        | DA(H)        | CMV         |
| A      | -            | -           |
| B      | -            | -           |
| C      | 505(480)     | 2000        |
| D      |              |             |

**Authorization Required**

MINIMA with Missed APCH climb gradient of 2.5% are not established.

INSTRUMENT APPROACH CHART

RJOM / MATSUYAMA

RNP RWY14(AR)

Coding Table

| Serial Number | Path Descriptor                    | Waypoint Identifier | Fly Over | Course °M(°T)  | Magnetic Variation | Distance (NM) | Turn Direction | Altitude (FT) | Speed (KIAS) | VPA/ RDH (°/FT) | RNP Value |
|---------------|------------------------------------|---------------------|----------|----------------|--------------------|---------------|----------------|---------------|--------------|-----------------|-----------|
| 001           | IF                                 | MADON               | -        | -              | -7.1               | -             | -              | +4000         | -            | -               | -         |
| 002           | TF                                 | UNSHU               | -        | 210<br>(203.3) | -7.1               | 3.2           | -              | 3000          | -            | -               | 1.0       |
| 003           | TF                                 | OM481               | -        | 210<br>(203.2) | -7.1               | 2.3           | -              | 2265          | -            | -3.00           | 0.3       |
| 004           | RF<br>Center:<br>OMRF4<br>r=3.06NM | OM482               | -        | -              | -7.1               | 3.9           | L              | 1023          | -            | -3.00           | 0.3       |
| 005           | TF                                 | RW14                | Y        | 138<br>(130.5) | -7.1               | 3.0           | -              | 80            | -            | -3.00/55        | 0.3       |
| 006           | FA                                 | -                   | -        | 138<br>(130.5) | -7.1               | -             | -              | +700          | -            | -               | 1.0       |
| 007           | DF                                 | OM483               | -        | -              | -7.1               | -             | R              | -             | -            | -               | 1.0       |
| 008           | TF                                 | OM484               | -        | 318<br>(310.5) | -7.1               | 7.2           | -              | -             | -            | -               | 1.0       |
| 009           | TF                                 | ROBIN               | -        | 026<br>(018.6) | -7.1               | 5.4           | -              | 2700          | -            | -               | 1.0       |

Waypoint Coordinates

| Waypoint Identifier | Coordinates              | RF Arc Center Identifier | Coordinates              |
|---------------------|--------------------------|--------------------------|--------------------------|
| MADON               | 340037.92N / 1324017.47E | OMRF4                    | 335420.16N / 1324102.43E |
| UNSHU               | 335740.45N / 1323845.52E |                          |                          |
| OM481               | 335533.13N / 1323739.63E |                          |                          |
| OM482               | 335159.96N / 1323839.26E |                          |                          |
| RW14                | 335004.50N / 1324121.73E |                          |                          |
| OM483               | 334643.12N / 1323652.81E |                          |                          |
| OM484               | 335123.09N / 1323018.19E |                          |                          |
| ROBIN               | 335627.62N / 1323221.80E |                          |                          |

CHANGE : PROC renamed.

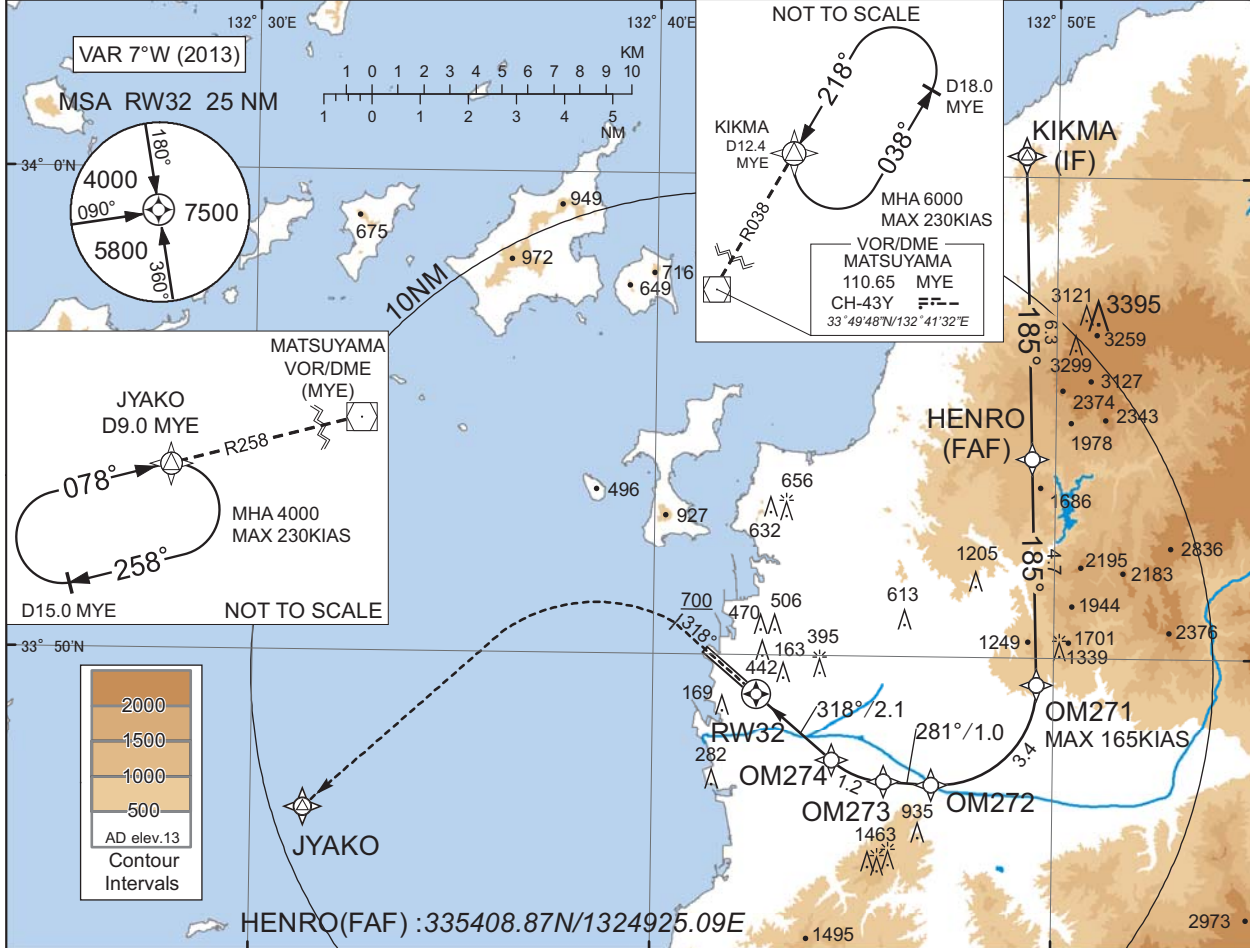
INSTRUMENT APPROACH CHART

RJOM / MATSUYAMA

RNP RWY32(AR)

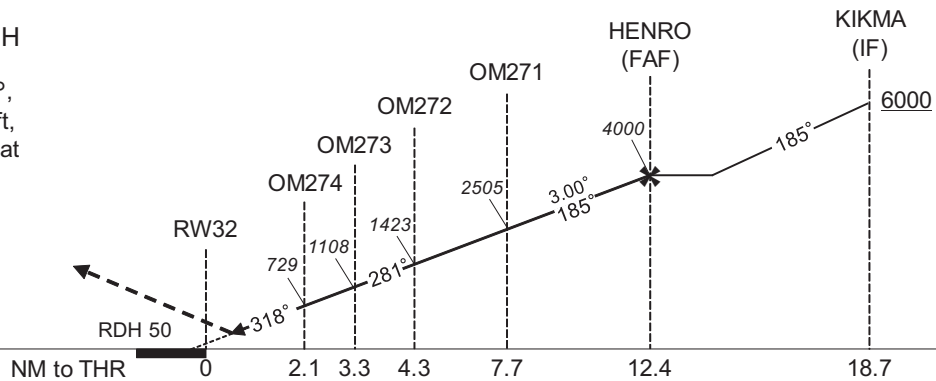
|                              |                        |                                   |                           |
|------------------------------|------------------------|-----------------------------------|---------------------------|
| IWAKUNI APP<br>128.0 - 236.2 | RNP AR<br>RF required. | MATSUYAMA TOWER<br>118.35 - 126.2 | RADAR AVBL<br>ATIS 126.65 |
|------------------------------|------------------------|-----------------------------------|---------------------------|

For uncompensated Baro-VNAV systems, procedure not authorized below -5°C / above 50°C



MISSED APPROACH

From RW32 on track 318°, at or above 700FT turn left, direct to JYAKO and hold at 4000FT. Contact IWAKUNI APP.



Missed APCH climb gradient MNM 5.0%

| MINIMA | THR elev. 17 | AD elev. 13 |
|--------|--------------|-------------|
| CAT    | RNP 0.30     |             |
|        | DA(H)        | CMV         |
| A      | -            | -           |
| B      | -            | -           |
| C      | 484(467)     | 1600        |
| D      | -            | 1800        |

**Authorization Required**

MINIMA with Missed APCH climb gradient of 2.5% are not established.

CHANGE : PROC renamed. Requirement for RNP.

INSTRUMENT APPROACH CHART

RJOM / MATSUYAMA

RNP RWY32(AR)

Coding Table

| Serial Number | Path Descriptor                    | Waypoint Identifier | Fly Over | Course °M(°T)  | Magnetic Variation | Distance (NM) | Turn Direction | Altitude (FT) | Speed (KIAS) | VPA/ RDH (°/FT) | RNP Value |
|---------------|------------------------------------|---------------------|----------|----------------|--------------------|---------------|----------------|---------------|--------------|-----------------|-----------|
| 001           | IF                                 | KIKMA               | -        | -              | -7.1               | -             | -              | +6000         | -            | -               | -         |
| 002           | TF                                 | HENRO               | -        | 185<br>(178.4) | -7.1               | 6.3           | -              | 4000          | -            | -               | 1.0       |
| 003           | TF                                 | OM271               | -        | 185<br>(178.4) | -7.1               | 4.7           | -              | 2505          | -165         | -3.00           | 0.3       |
| 004           | RF<br>Center:<br>OMRF1<br>r=2.04NM | OM272               | -        | -              | -7.1               | 3.4           | R              | 1423          | -            | -3.00           | 0.3       |
| 005           | TF                                 | OM273               | -        | 281<br>(273.5) | -7.1               | 1.0           | -              | 1108          | -            | -3.00           | 0.3       |
| 006           | RF<br>Center:<br>OMRF2<br>r=1.85NM | OM274               | -        | -              | -7.1               | 1.2           | R              | 729           | -            | -3.00           | 0.3       |
| 007           | TF                                 | RW32                | Y        | 318<br>(310.7) | -7.1               | 2.1           | -              | 67            | -            | -3.00/50        | 0.3       |
| 008           | FA                                 | -                   | -        | 318<br>(310.7) | -7.1               | -             | -              | +700          | -            | -               | 1.0       |
| 009           | DF                                 | JYAKO               | -        | -              | -7.1               | -             | L              | 4000          | -            | -               | 1.0       |

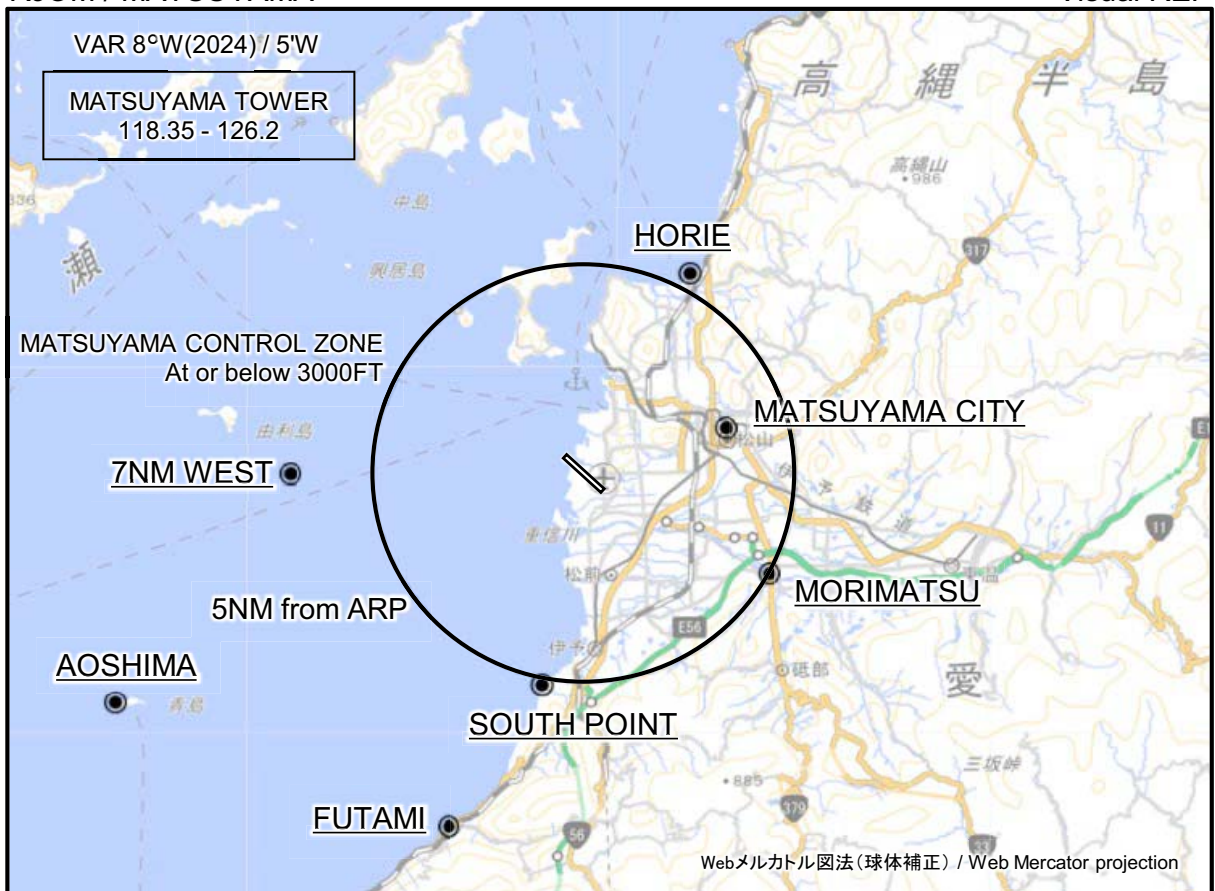
Waypoint Coordinates

| Waypoint Identifier | Coordinates              | RF Arc Center Identifier | Coordinates              |
|---------------------|--------------------------|--------------------------|--------------------------|
| KIKMA               | 340027.49N / 1324911.96E | OMRF1                    | 334923.23N / 1324707.68E |
| HENRO               | 335408.87N / 1324925.09E | OMRF2                    | 334915.02N / 1324555.54E |
| OM271               | 334926.79N / 1324934.83E |                          |                          |
| OM272               | 334720.59N / 1324658.72E |                          |                          |
| OM273               | 334724.21N / 1324547.47E |                          |                          |
| OM274               | 334750.46N / 1324429.38E |                          |                          |
| RW32                | 334911.75N / 1324235.61E |                          |                          |
| JYAKO               | 334643.83N / 1323118.89E |                          |                          |

CHANGE : PROC renamed.

RJOM / MATSUYAMA

Visual REP



※図中に標高を示す数字がある場合、単位はメートル(m)である。The unit of measurement used to express elevation is meter(m).

CHANGE : VAR.

| Call sign                | BRG / DIST from ARP | Remarks                           |
|--------------------------|---------------------|-----------------------------------|
| 堀江<br>Horie              | 027°T / 5.4NM       | 堀江港<br>Horie harbor               |
| 松山シティー<br>Matsuyama City | 072°T / 3.4NM       | 松山城<br>Matsuyama castle           |
| 7NM WEST                 | 270°T / 7.0NM       | 海上<br>Over the sea                |
| 森松<br>Morimatsu          | 119°T / 5.0NM       | 重信大橋<br>Shigenobu-ohashi bridge   |
| サウスポイント<br>South Point   | 192°T / 5.1NM       | 森川河口<br>Mouth of Mori river       |
| 青島<br>Aoshima            | 243°T / 12.3NM      | 青島<br>Aoshima island              |
| 双海<br>Futami             | 201°T / 9.1NM       | ふたみシーサイド公園<br>Futami seaside park |

注：有視界飛行方式により松山空港に着陸しようとする航空機又は松山航空交通管制圏を通過しようとする航空機は、南方向から進入する場合は双海ポイント付近で、南西～西方向から進入する場合は青島ポイント又は7NM WEST付近で、松山タワーと通信設定すること。

NOTE : When VFR flight is going to enter the control zone for landing or passing through, the pilot should contact with the control tower before passing following points;  
FUTAMI in case of coming from south/  
AOSHIMA or 7NM WEST in case of coming from southwest to west.

**INTENTIONALLY LEFT BLANK**