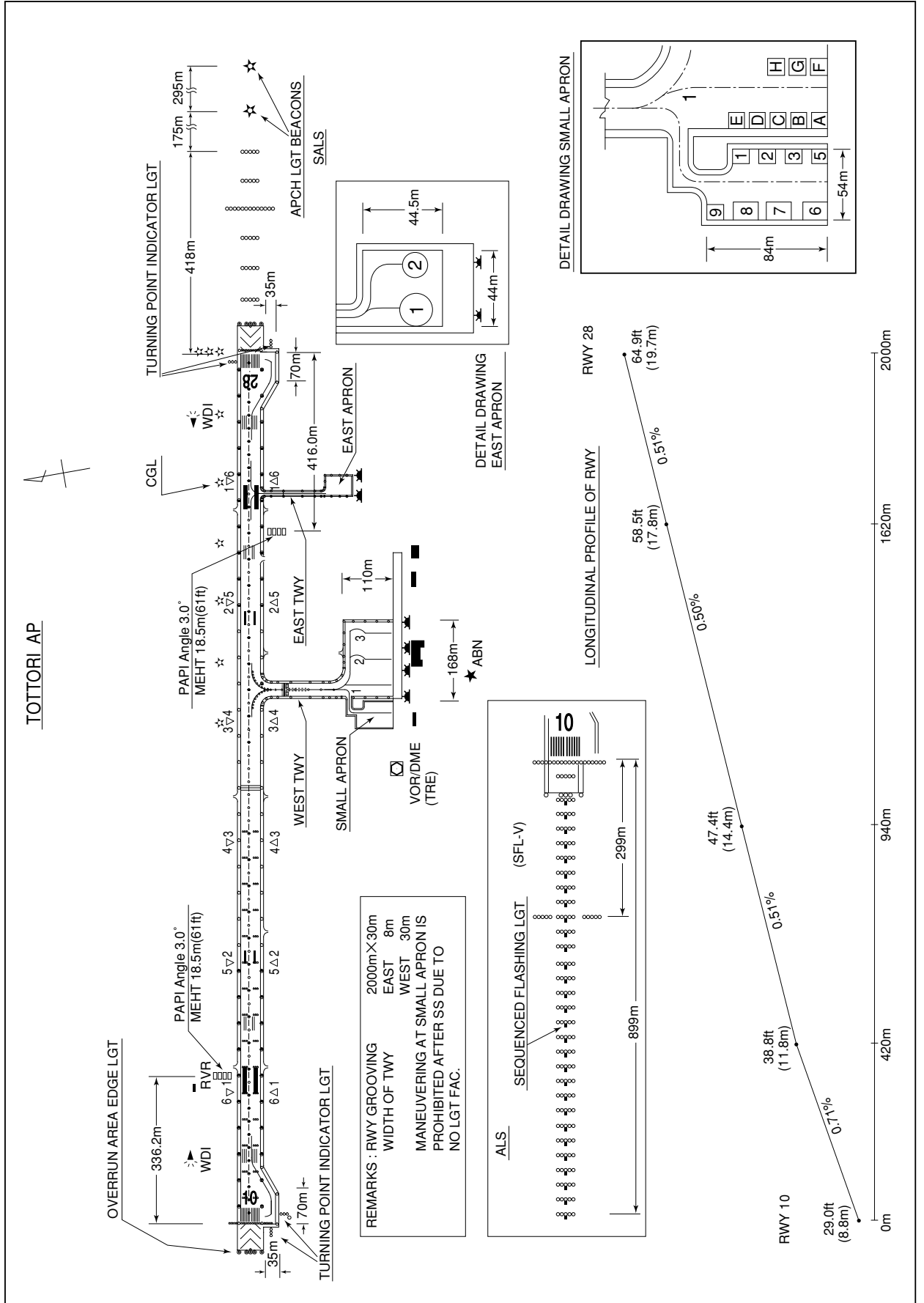


RJOR / TOTTORI

AD CHART



INTENTIONALLY LEFT BLANK

STANDARD DEPARTURE CHART - INSTRUMENT

RJOR / TOTTORI

SID

AYABE THREE DEPARTURE

RWY 10 : Climb RWY HDG to 500FT, turn left HDG345° ...

RWY 28 : Climb RWY HDG to 500FT, turn right HDG075° ...

...to intercept and proceed via TRE R030 to 13.0DME, turn right, via YME R300 to YME VOR/DME.

Note RWY10 : 5.5% climb gradient required up to 1300FT.

OBST ALT 1247FT located at 3.73NM 105° FM end of RWY10.

RWY28 : 4.0% climb gradient required up to 700FT.

OBST ALT 374FT located at 2.62NM 271° FM end of RWY28.

TOTTORI REVERSAL THREE DEPARTURE

RWY 10 : Climb RWY HDG to 500FT, turn left HDG345° ...

RWY 28 : Climb RWY HDG to 500FT, turn right HDG075° ...

...to intercept and proceed via TRE R030 to 13.0DME, turn left, direct to TRE VOR/DME.

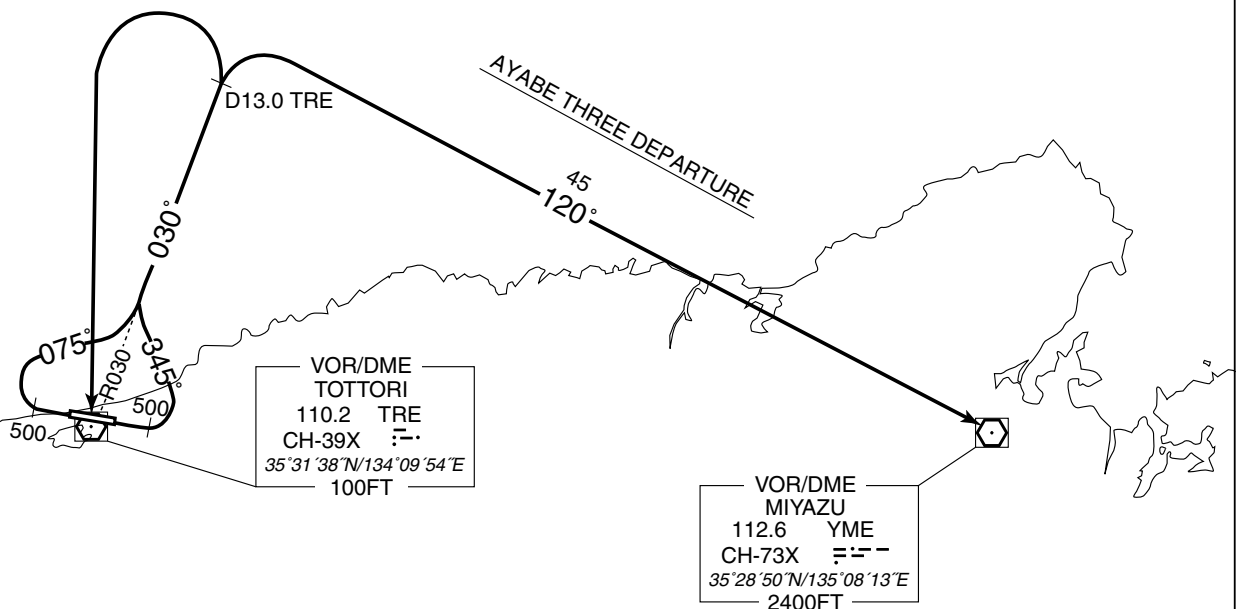
Note RWY10 : 5.5% climb gradient required up to 1300FT.

OBST ALT 1247FT located at 3.73NM 105° FM end of RWY10.

RWY28 : 4.0% climb gradient required up to 700FT.

OBST ALT 374FT located at 2.62NM 271° FM end of RWY28.

TOTTORI REVERSAL THREE DEPARTURE



STANDARD DEPARTURE CHART -INSTRUMENT

RJOR / TOTTORI

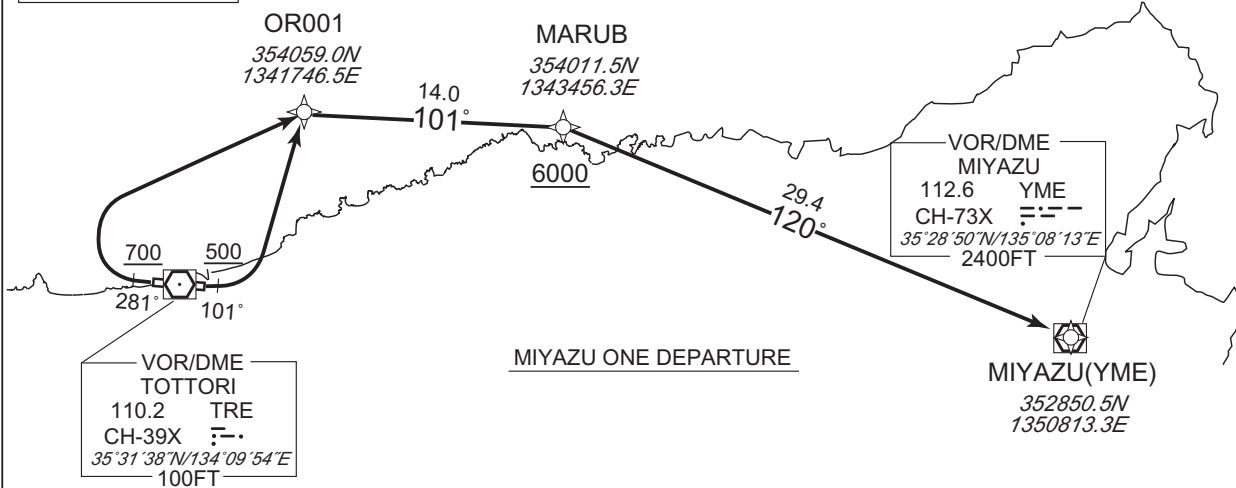
RNAV SID

MIYAZU ONE DEPARTURE

RNP1

Note GNSS required.

VAR 8°W (2013)



MIYAZU ONE DEPARTURE

- RWY10: Climb on HDG 101° at or above 500FT, turn left direct to OR001, to MARUB at or above 6000FT, to YME.
- RWY28: Climb on HDG 281° at or above 700FT, turn right direct to OR001, to MARUB at or above 6000FT, to YME.

NOTE RWY10: 5.3% climb gradient required up to 1100FT.
OBST ALT 853FT located at 3.6NM 102° FM end of RWY10.

RWY28: 3.6% climb gradient required up to 700FT.
OBST ALT 394FT located at 2.2NM 264° FM end of RWY28.

RWY10

Serial Number	Path Descriptor	Waypoint Identifier	Fly Over	Course °M(°T)	Magnetic Variation	Distance (NM)	Turn Direction	Altitude (FT)	Speed (KIAS)	Vertical Angle	Navigation Specification
001	VA	—	—	101 (093.8)	-7.6	—	—	+500	—	—	RNP1
002	DF	OR001	—	—	-7.6	—	L	—	—	—	RNP1
003	TF	MARUB	—	101 (093.2)	-7.6	14.0	—	+6000	—	—	RNP1
004	TF	YME	—	120 (112.6)	-7.6	29.4	—	—	—	—	RNP1

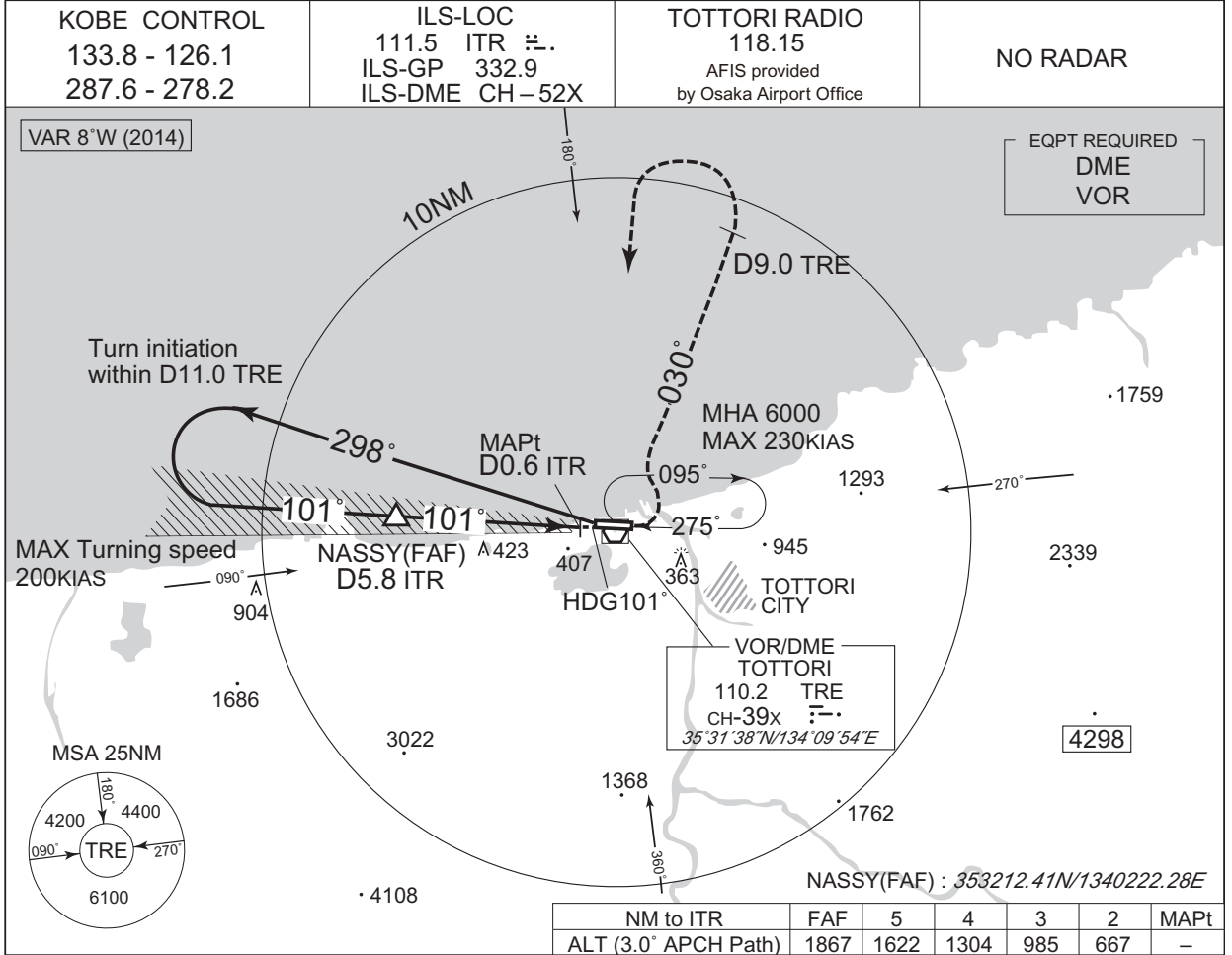
RWY28

Serial Number	Path Descriptor	Waypoint Identifier	Fly Over	Course °M(°T)	Magnetic Variation	Distance (NM)	Turn Direction	Altitude (FT)	Speed (KIAS)	Vertical Angle	Navigation Specification
001	VA	—	—	281 (273.8)	-7.6	—	—	+700	—	—	RNP1
002	DF	OR001	—	—	-7.6	—	R	—	—	—	RNP1
003	TF	MARUB	—	101 (093.2)	-7.6	14.0	—	+6000	—	—	RNP1
004	TF	YME	—	120 (112.6)	-7.6	29.4	—	—	—	—	RNP1

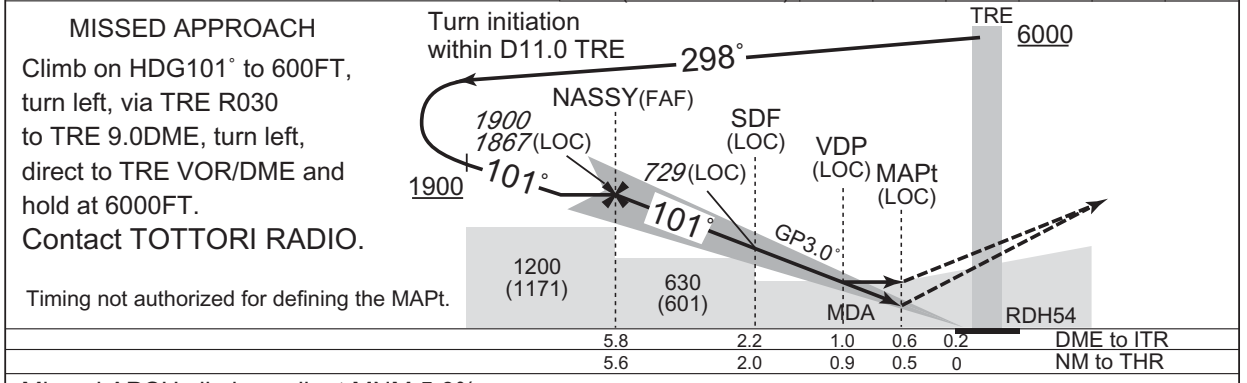
CHANGE : Navigation Specification(Basic RNP1 → RNP1).

INSTRUMENT APPROACH CHART

RJOR / TOTTORI ILS or LOC RWY10



CHANGE : FREQ for KOBE CONTROL.



Missed APCH climb gradient MNM 5.0%

MINIMA		THR elev. 29		AD elev. 48			
CAT	CAT I		LOC		CIRCLING		
	DA(H)	RVR/CMV	MDA(H)	RVR/CMV	MDA(H)	VIS	
A	229 (200)	550	350 (321)	900	790 (742)	590 (542)	1600
B				1000			
C				1400	840 (792)	760 (712)	3200
D							

MINIMA with Missed APCH climb gradient of 2.5% are not established.

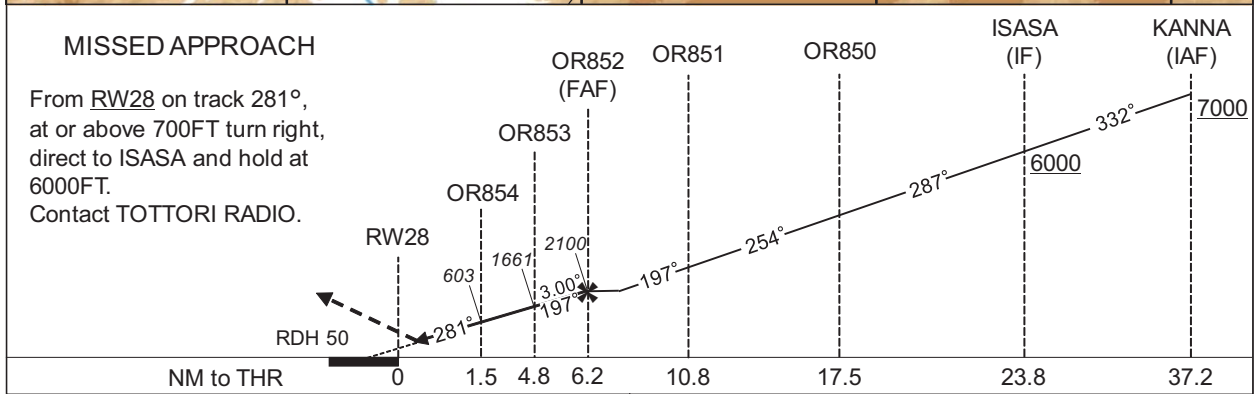
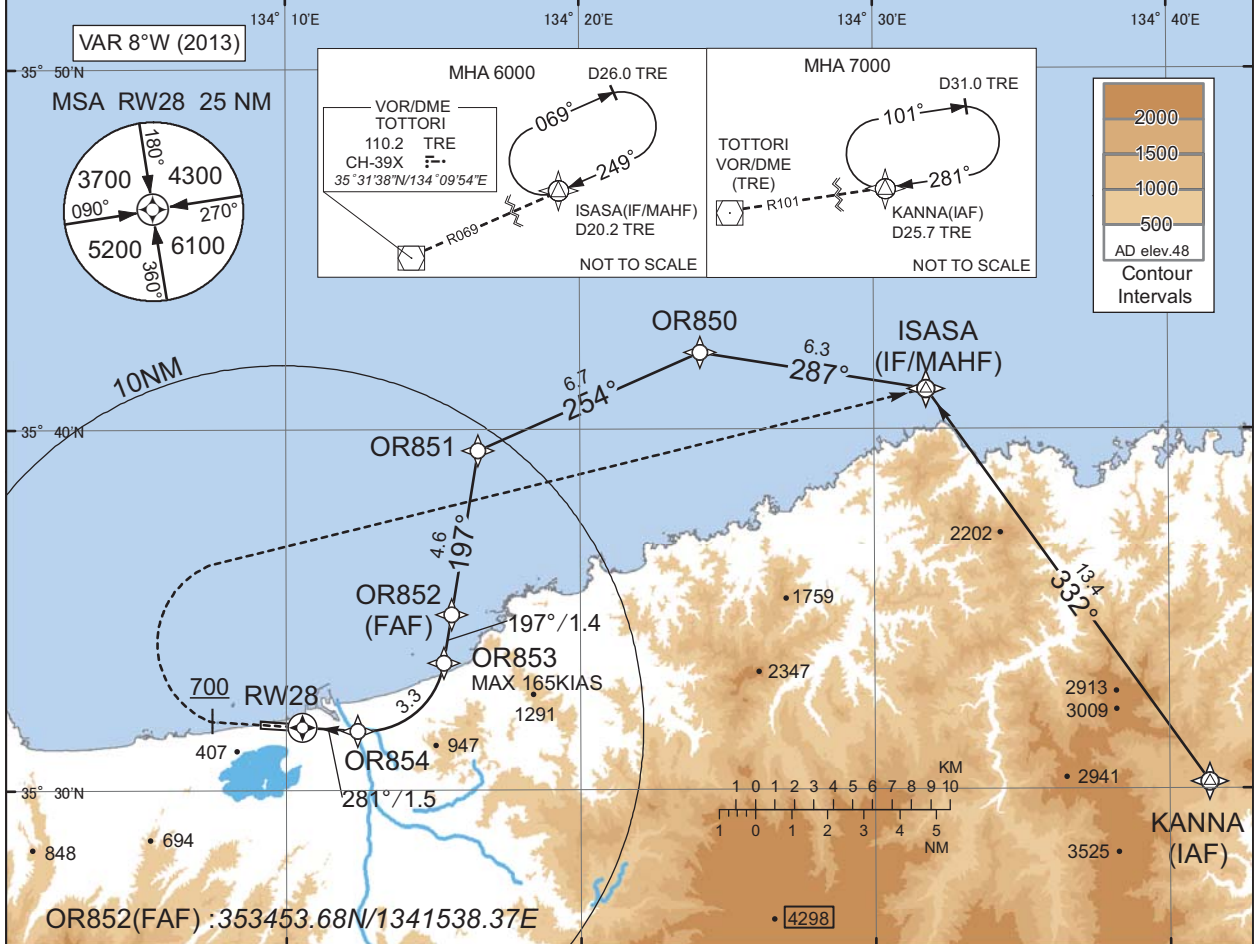
INSTRUMENT APPROACH CHART

RJOR / TOTTORI

RNP RWY28(AR)

KOBE CONTROL 133.8 - 126.1 287.6 - 278.2	RNP AR RF required.	TOTTORI RADIO 118.15 AFIS provided by Osaka Airport Office	NO RADAR
--	------------------------	---	----------

For uncompensated Baro-VNAV systems, procedure not authorized below -5°C / above 45°C



MINIMA	THR elev. 65	AD elev. 48
CAT	RNP 0.30	
	DA(H)	CMV
A	-	-
B	-	-
C	365(300)	1600
D	365(300)	1800

Authorization Required

Missed APCH climb gradient MNM 3.4%

CHANGE : FREQ for KOBE CONTROL.

INSTRUMENT APPROACH CHART

RJOR / TOTTORI

RNP RWY28(AR)

Coding Table

Serial Number	Path Descriptor	Waypoint Identifier	Fly Over	Course °M(°T)	Magnetic Variation	Distance (NM)	Turn Direction	Altitude (FT)	Speed (KIAS)	VPA/RDH (°/FT)	RNP Value
001	IF	KANNA	-	-	-7.6	-	-	+7000	-	-	-
002	TF	ISASA	-	332 (324.6)	-7.6	13.4	-	+6000	-	-	1.0
003	TF	OR850	-	287 (279.4)	-7.6	6.3	-	-	-	-	1.0
004	TF	OR851	-	254 (246.2)	-7.6	6.7	-	-	-	-	1.0
005	TF	OR852	-	197 (189.2)	-7.6	4.6	-	2100	-	-	1.0
006	TF	OR853	-	197 (189.2)	-7.6	1.4	-	1661	-165	-3.00	0.3
007	RF Center: ORRF1 r=2.25NM	OR854	-	-	-7.6	3.3	R	603	-	-3.00	0.3
008	TF	RW28	Y	281 (273.8)	-7.6	1.5	-	115	-	-3.00/50	0.3
009	FA	-	-	281 (273.8)	-7.6	-	-	+700	-	-	1.0
010	DF	ISASA	-	-	-7.6	-	R	6000	-	-	1.0

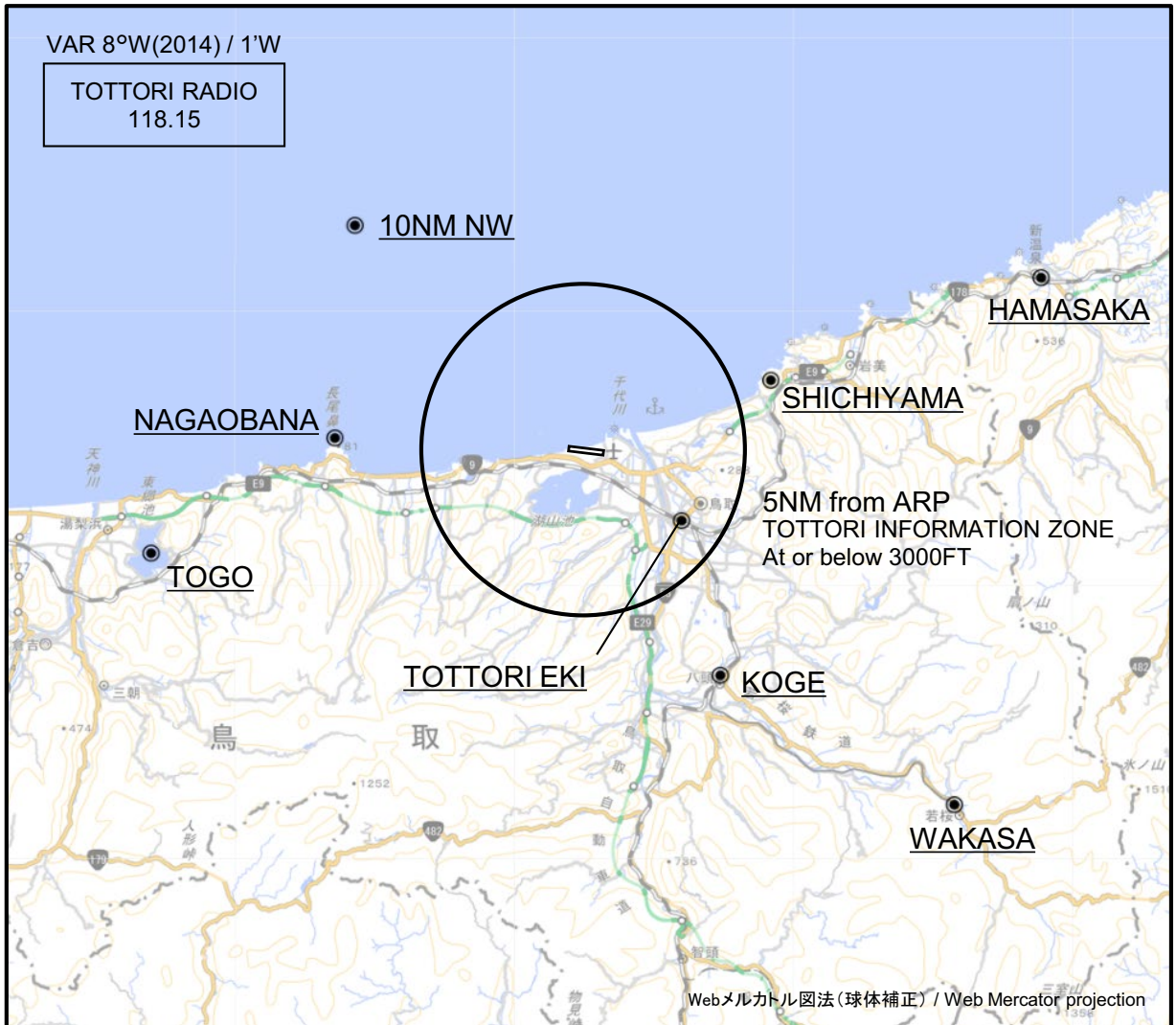
Waypoint Coordinates

Waypoint Identifier	Coordinates	RF Arc Center Identifier	Coordinates
KANNA	353011.27N / 1344121.95E	ORRF1	353354.77N / 1341238.96E
ISASA	354107.52N / 1343147.31E		
OR850	354209.38N / 1342406.43E		
OR851	353926.62N / 1341632.67E		
OR852	353453.68N / 1341538.37E		
OR853	353333.13N / 1341522.36E		
OR854	353139.90N / 1341226.53E		
RW28	353146.03N / 1341033.79E		

CHANGE : PROC renamed.

RJOR / TOTTORI

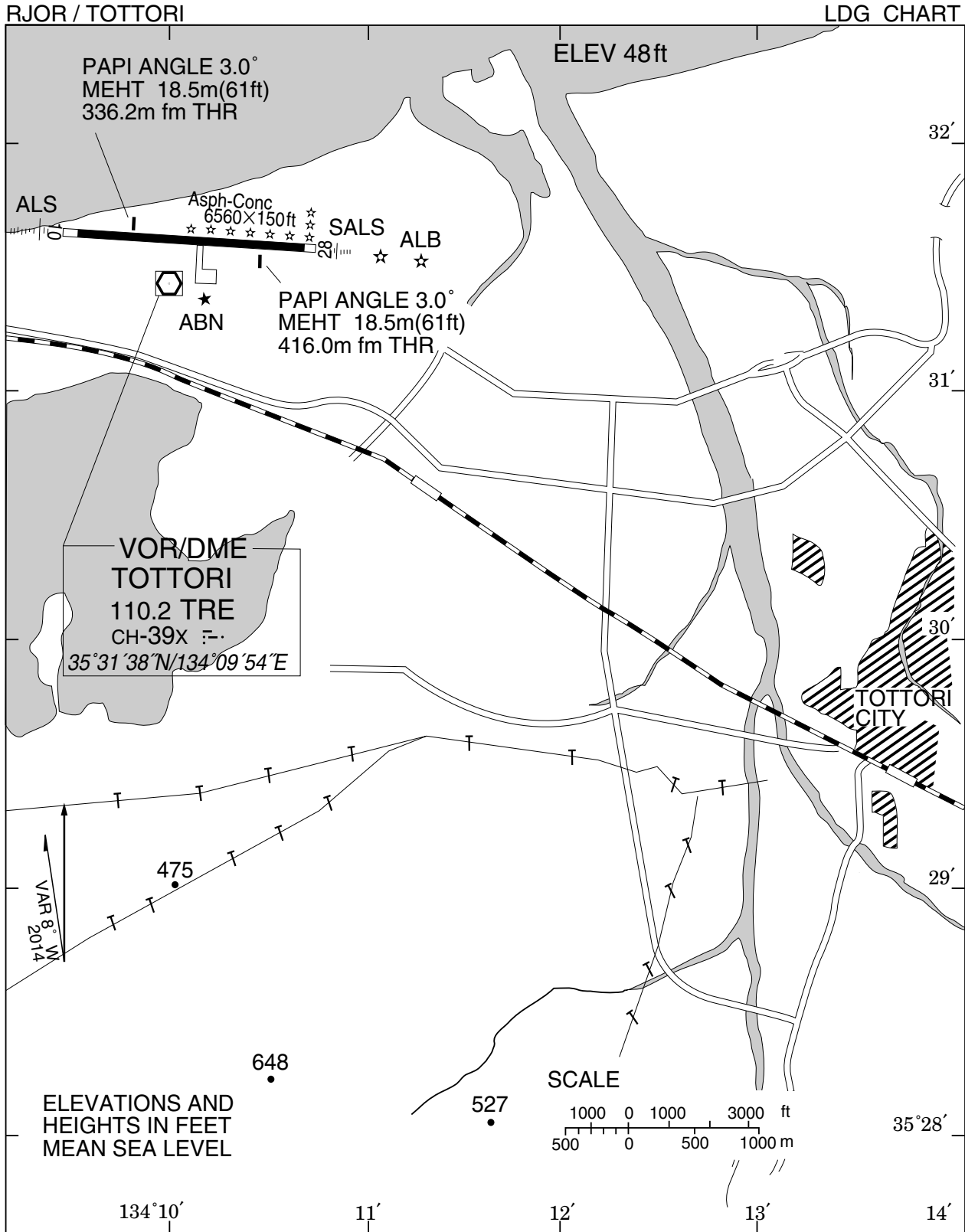
Visual REP



※図中に標高を示す数字がある場合、単位はメートル(m)である。The unit of measurement used to express elevation is meter(m).

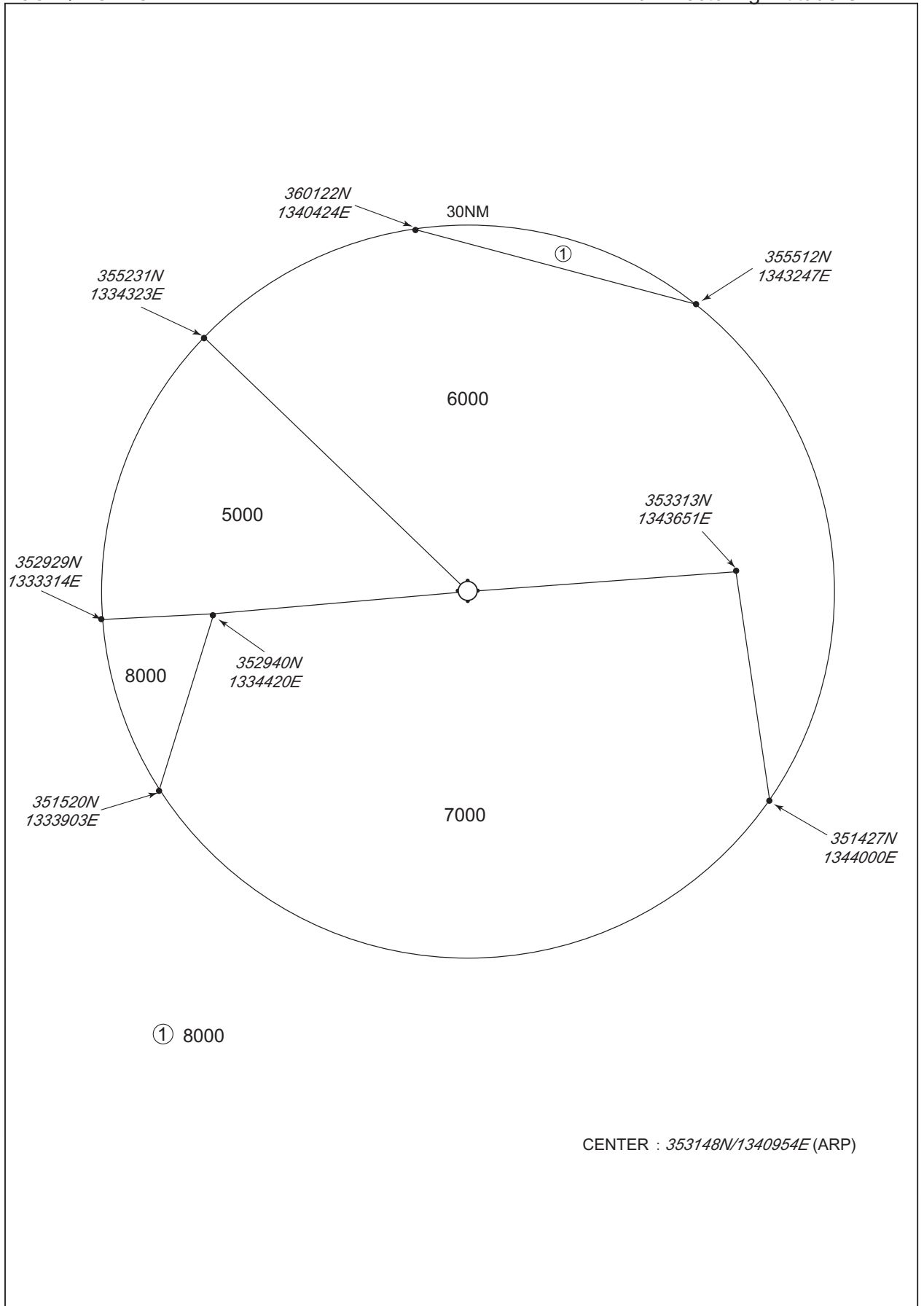
CHANGE : Secondary FREQ abolished.

Call sign	BRG / DIST from ARP	Remarks
10NM NW	315°T / 10.0NM	海上 Over the sea
浜坂 Hamasaka	069°T / 15.1NM	駅 Station
駟馳山 Shichiyama	069°T / 6.2NM	山 Mountain
長尾鼻 Nagaobana	273°T / 7.7NM	岬 Cape
鳥取駅 Tottori eki	126°T / 3.7NM	駅 Station
東郷 Togo	257°T / 13.7NM	池 Pond
郡家 Koge	149°T / 8.2NM	駅 Station
若桜 Wakasa	134°T / 15.9NM	駅 Station



RJOR / TOTTORI

Minimum Vectoring Altitude CHART



INTENTIONALLY LEFT BLANK