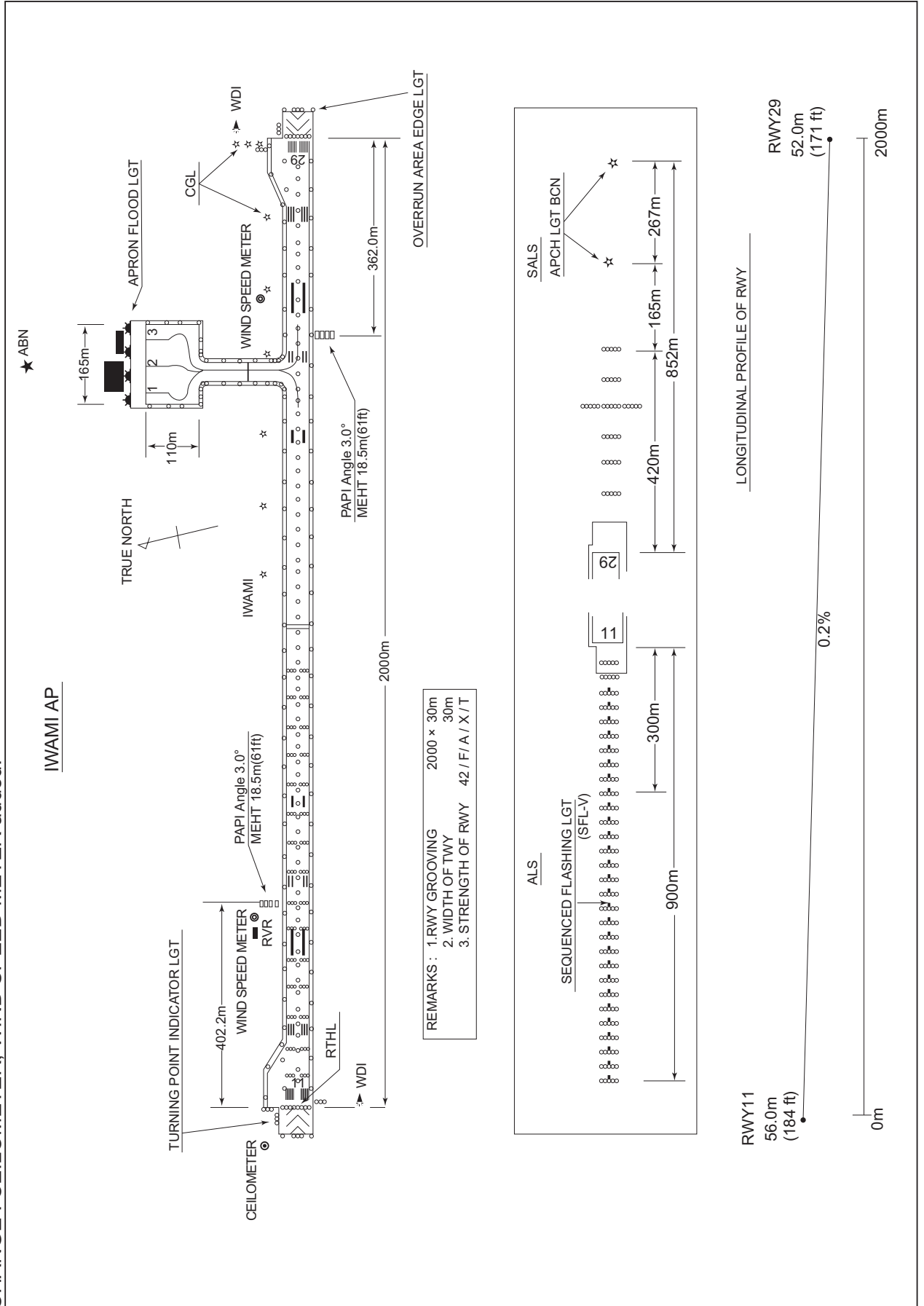


RJOW / IWAMI

AD CHART

CHANGE : CEILOMETER, WIND SPEED METER added.



STANDARD DEPARTURE CHART-INSTRUMENT

RJOW / IWAMI

SID and TRANSITION

SAMBA THREE DEPARTURE

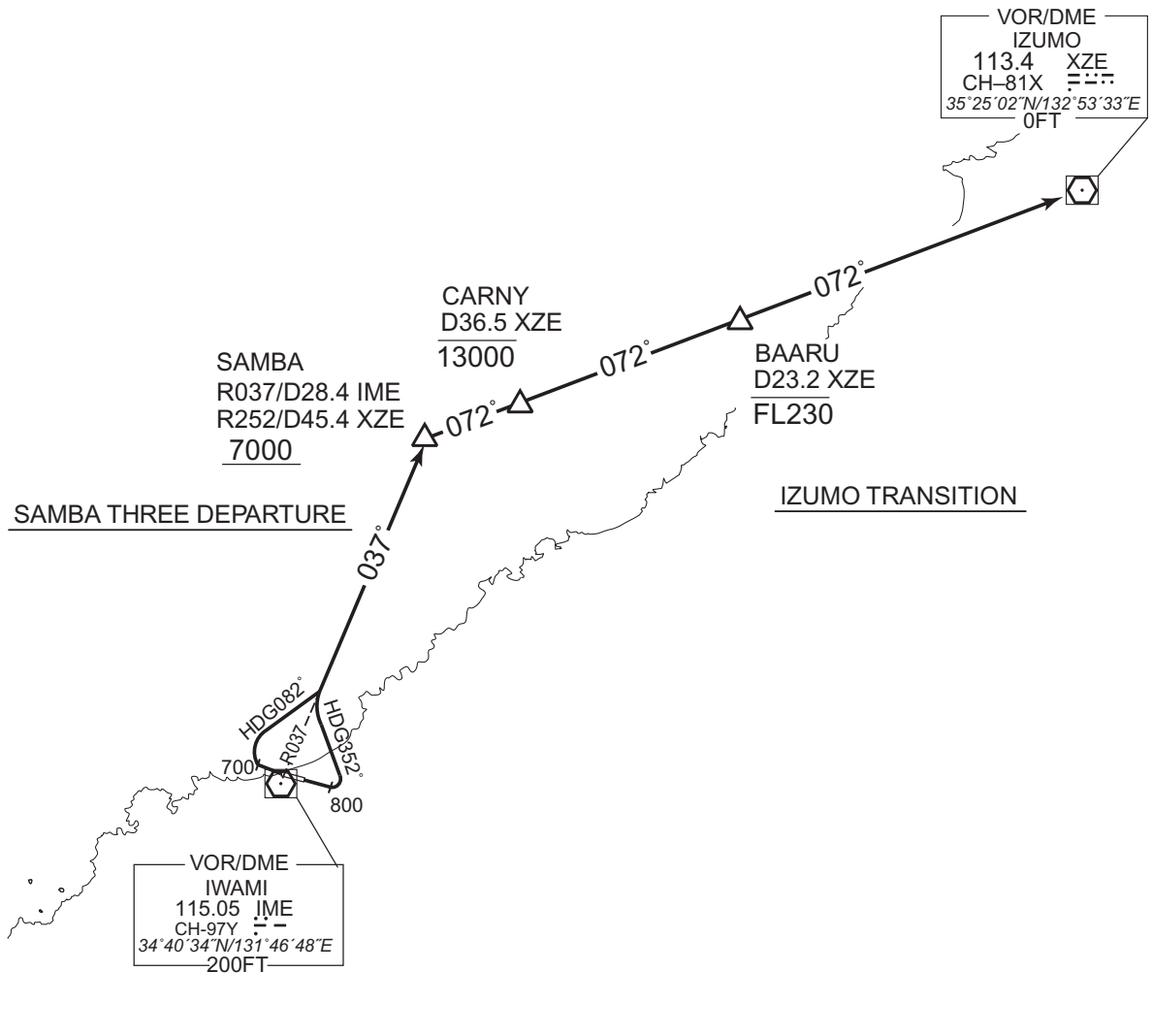
RWY11 : Climb RWY HDG to 800FT, turn left HDG352° ,...
 RWY29 : Climb RWY HDG to 700FT, turn right HDG082° ,...
 ...to intercept and proceed via IME R037 to SAMBA.
 Cross SAMBA at or above 7000FT.

Note RWY11 : 5.7% climb gradient required up to 1700FT.
 OBST ALT 1322FT located at 4.8NM 094° FM end of RWY11.

IZUMO TRANSITION

From over SAMBA, via XZE R252 to XZE VOR/DME.
 Cross CARNY at or below 13000FT, cross BAARU at or below FL230.

CHANGE : PROC renamed(SAMBA THREE DEPARTURE). PROC course. Note RWY11(OBST).



STANDARD DEPARTURE CHART-INSTRUMENT

RJOW / IWAMI

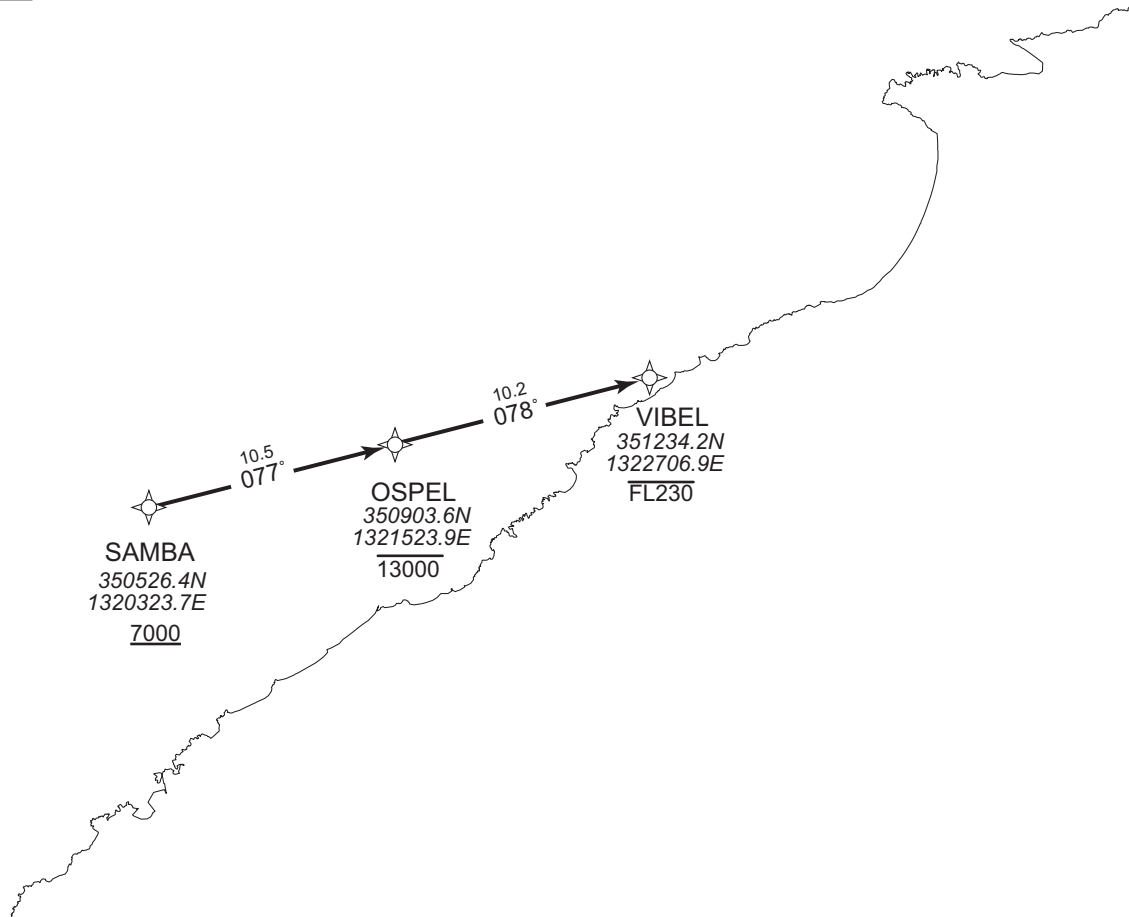
RNAV TRANSITION

VIBEL TRANSITION

RNAV1

Note 1) DME/DME/IRU or GNSS required.
2) RADAR service required.

VAR 8°W



From SAMBA at or above 7000FT, to OSPEL at or below 13000FT, to VIBEL at or below FL230.

Critical DME	STD : SAMBA – VIBEL
DME GAP	-
Inappropriate Navaids	See AD1.1.6.10.3. Inappropriate NAVAIDs for RNAV1.

CHANGE : FIX symbol(SAMBA).

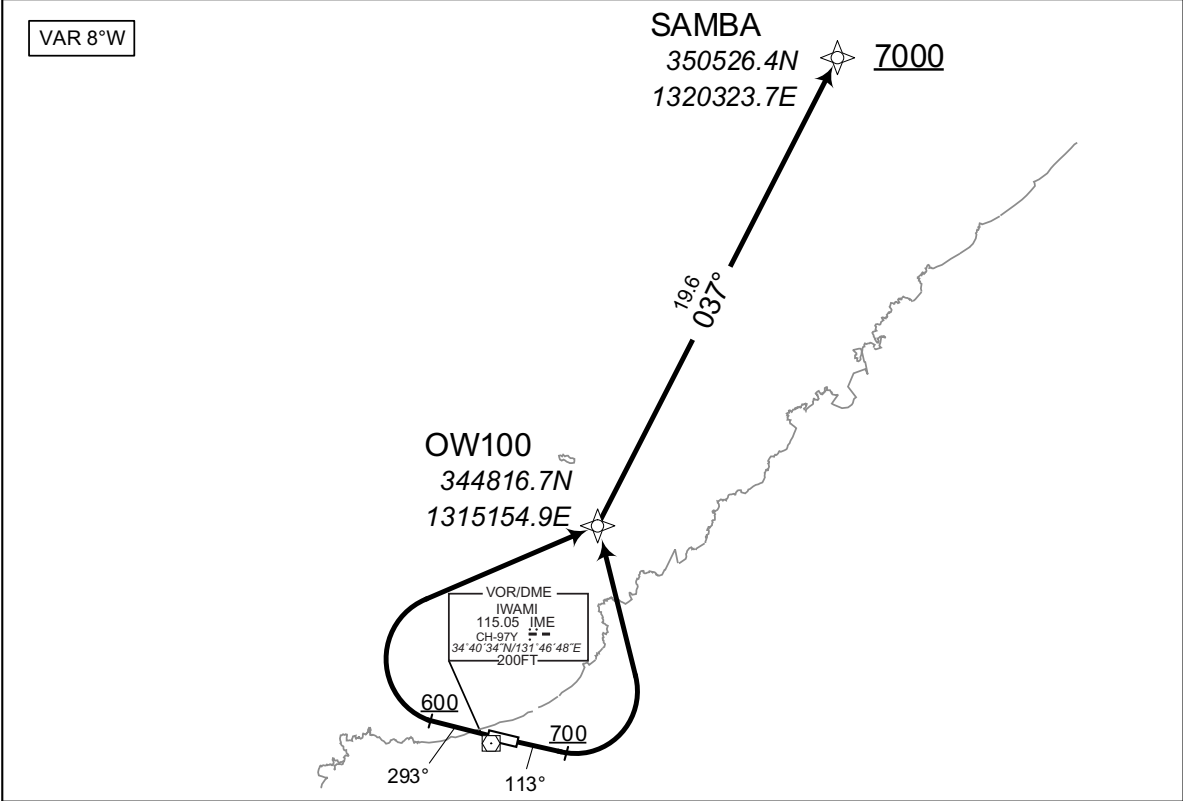
Serial Number	Path Descriptor	Waypoint Identifier	Fly Over	Course °M(°T)	Magnetic Variation	Distance (NM)	Turn Direction	Altitude (FT)	Speed (KIAS)	Vertical Angle	Navigation Specification
001	IF	SAMBA	-	-	-7.8	-	-	+7000	-	-	RNAV1
002	TF	OSPEL	-	077 (069.7)	-7.8	10.5	-	-13000	-	-	RNAV1
003	TF	VIBEL	-	078 (069.8)	-7.8	10.2	-	-FL230	-	-	RNAV1

STANDARD DEPARTURE CHART-INSTRUMENT

RJOW / IWAMI RNAV SID

SEKISYU ONE DEPARTURE	RNP1
-----------------------	------

Note GNSS required.



RWY11 : Climb on HDG113° at or above 700FT, turn left...
 RWY29 : Climb on HDG293° at or above 600FT, turn right...
 ...direct to OW100, to SAMBA at or above 7000FT.

Note RWY11 : 7.0% climb gradient required up to 800FT.
 OBST ALT 1182FT located at 4.8NM 094° FM end of RWY11.

CHANGE : Navigation Specification(Basic RNP1 → RNP1).

RWY11

Serial Number	Path Descriptor	Waypoint Identifier	Fly Over	Course °M(°T)	Magnetic Variation	Distance (NM)	Turn Direction	Altitude (FT)	Speed (KIAS)	Vertical Angle	Navigation Specification
001	VA	-	-	113 (104.8)	-8.2	-	-	+700	-	-	RNP1
002	DF	OW100	-	-	-8.2	-	L	-	-	-	RNP1
003	TF	SAMBA	-	037 (028.7)	-8.2	19.6	-	+7000	-	-	RNP1

RWY29

Serial Number	Path Descriptor	Waypoint Identifier	Fly Over	Course °M(°T)	Magnetic Variation	Distance (NM)	Turn Direction	Altitude (FT)	Speed (KIAS)	Vertical Angle	Navigation Specification
001	VA	-	-	293 (284.9)	-8.2	-	-	+600	-	-	RNP1
002	DF	OW100	-	-	-8.2	-	R	-	-	-	RNP1
003	TF	SAMBA	-	037 (028.7)	-8.2	19.6	-	+7000	-	-	RNP1

INTENTIONALLY LEFT BLANK

STANDARD ARRIVAL CHART-INSTRUMENT

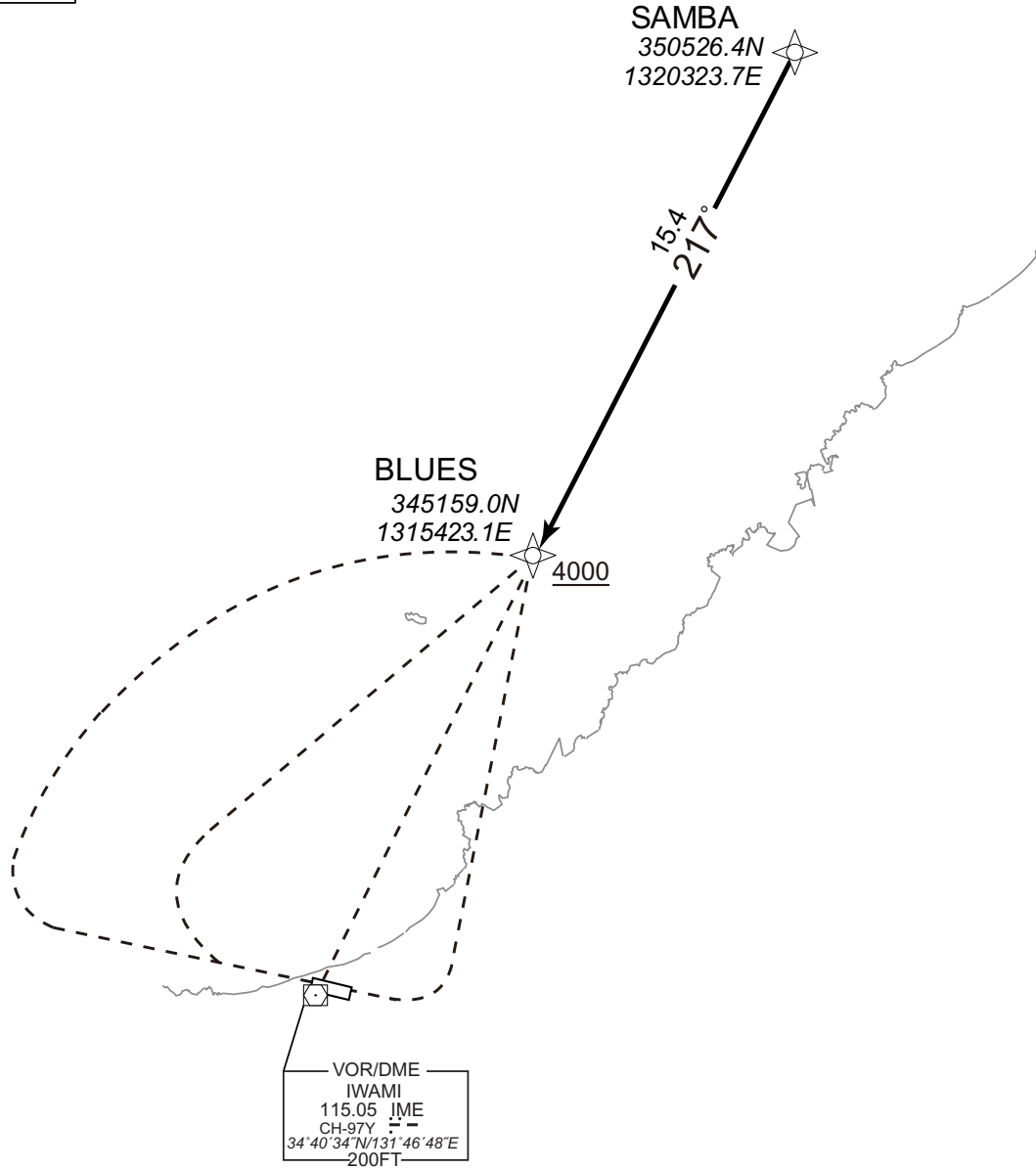
RJOW / IWAMI

RNAV STAR

SAMBA ARRIVAL	RNP1
---------------	------

Note GNSS required.

VAR 8°W



CHANGE : Navigation Specification(Basic RNP1 → RNP1).

From SAMBA, to BLUES at or above 4000FT.

Serial Number	Path Descriptor	Waypoint Identifier	Fly Over	Course °M(°T)	Magnetic Variation	Distance (NM)	Turn Direction	Altitude (FT)	Speed (KIAS)	Vertical Angle	Navigation Specification
001	IF	SAMBA	-	-	-8.2	-	-	-	-	-	RNP1
002	TF	BLUES	-	217 (208.8)	-8.2	15.4	-	+4000	-	-	RNP1

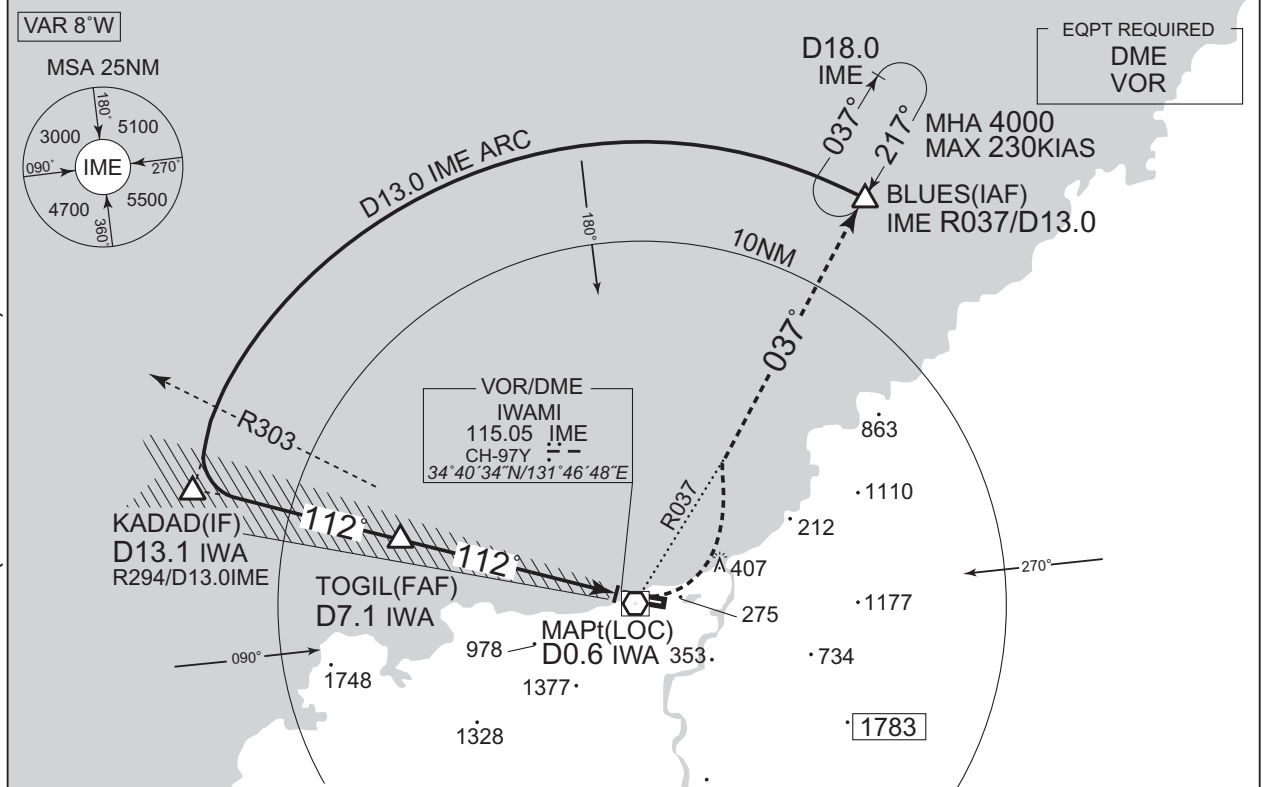
INTENTIONALLY LEFT BLANK

INSTRUMENT APPROACH CHART

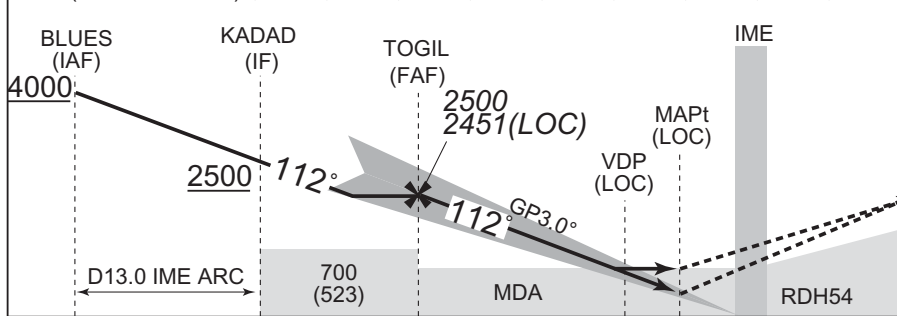
RJOW / IWAMI

ILS or LOC RWY11

KOBE CONTROL 132.5-246.1 134.25-315.5	ILS-LOC 108.1 IWA :≡ - ILS-GP 334.7 ILS-DME CH-18X	IWAMI RADIO 122.2 AFIS provided by Osaka Airport Office	NO RADAR
---	---	--	----------



NM to IWA	FAF	7	6	5	4	3	2	1	MAPt
ALT (3.0° APCH Path)	2451	2407	2088	1770	1451	1133	814	495	-



DME to IWA	13.1	7.1	1.0	0.6
NM to THR	13.0	7.0	0.8	0.5

Missed APCH climb gradient MNM 4.0%

MINIMA		THR elev. 184		AD elev. 177		
CAT	CAT I		LOC		CIRCLING	
	DA(H)	RVR/CMV	MDA(H)	RVR/CMV	MDA(H)	VIS
A	384 (200)	550	480 (303)	900	1000 (823)	1600
B				1000	1100 (923)	
C				1400 (1223)	2400	
D				1400	1600 (1423)	3200

Circling to NORTH side of RWY only.
MINIMA with Missed APCH climb gradient of 2.5% are not established.

CHANGE: VAR: KADAD, TOGIL established. Missed APCH course. HLDG course. MSA(BTN 270° and 360°).

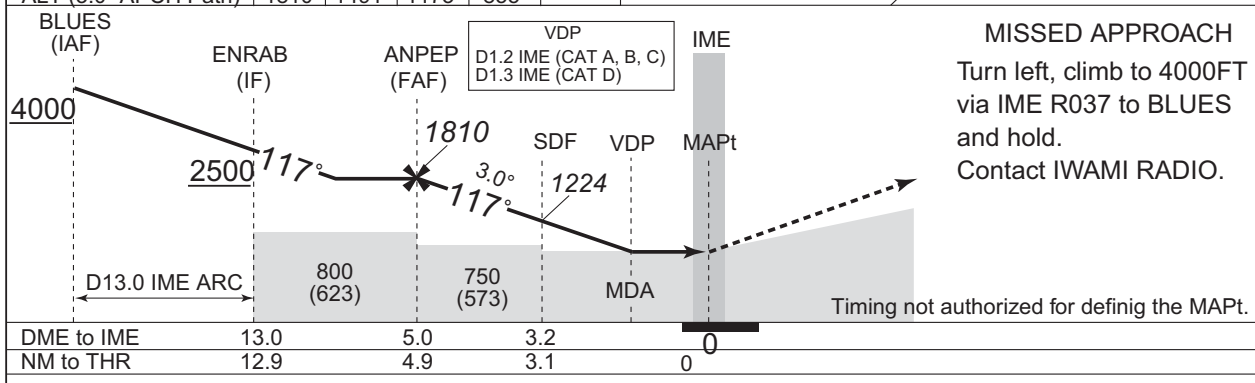
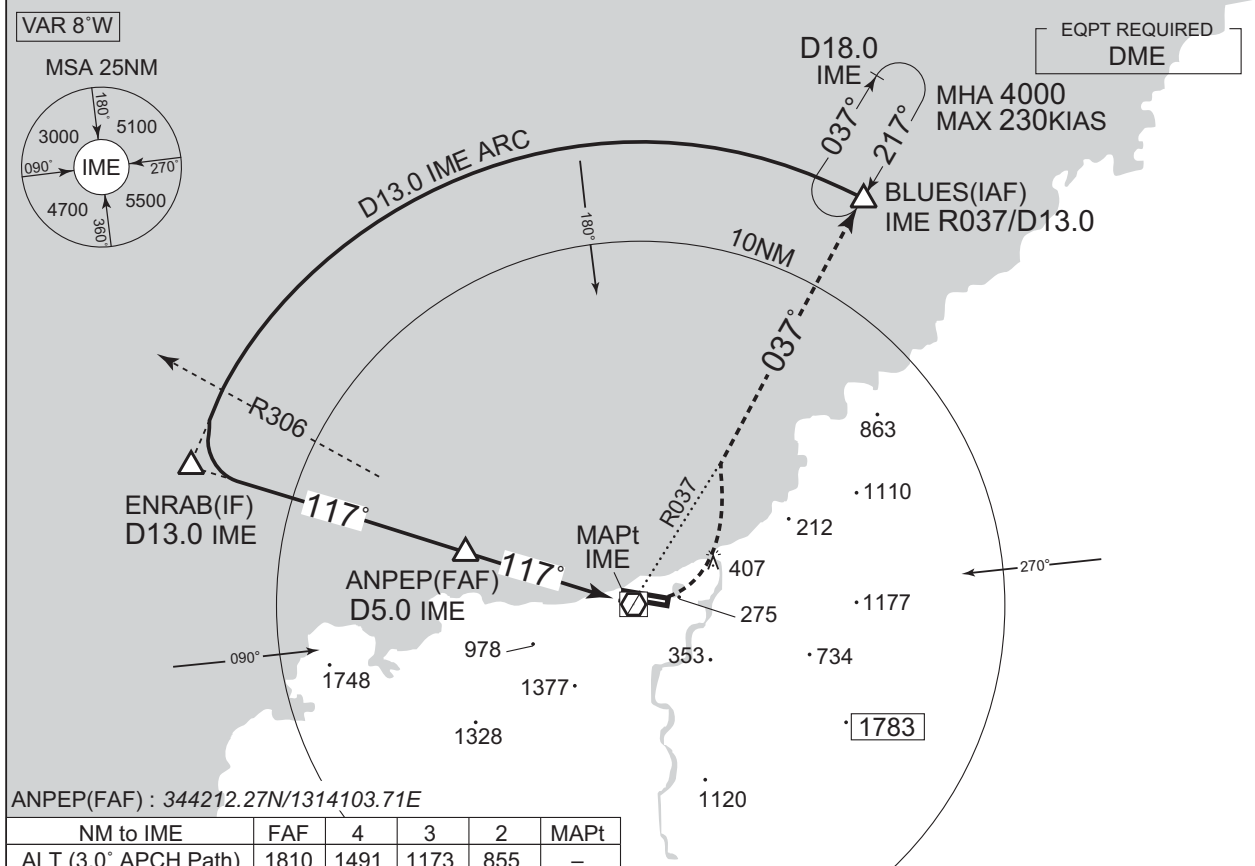
INSTRUMENT APPROACH CHART

RJOW / IWAMI

VOR RWY11

KOBE CONTROL 132.5-246.1 134.25-315.5	IWAMI VOR/DME 115.05 IME CH-97Y --- 34°40'34"N/131°46'48"E	IWAMI RADIO 122.2 AFIS provided by Osaka Airport Office	NO RADAR
---	---	--	----------

CHANGE: VAR. PROC course. ENRAB, ANPEP established. Missed APCH course. HLDG course. MSA(BTN 270° and 360°).



MINIMA		THR elev. 184	AD elev. 177	
CAT	CIRCLING			
	MDA(H)	RVR/CMV	MDA(H)	VIS
A	590 (413)	900	1000 (823)	1600
B		1000	1100 (923)	
C		1000	1400 (1223)	2400
D	610 (433)	1400	1600 (1423)	3200

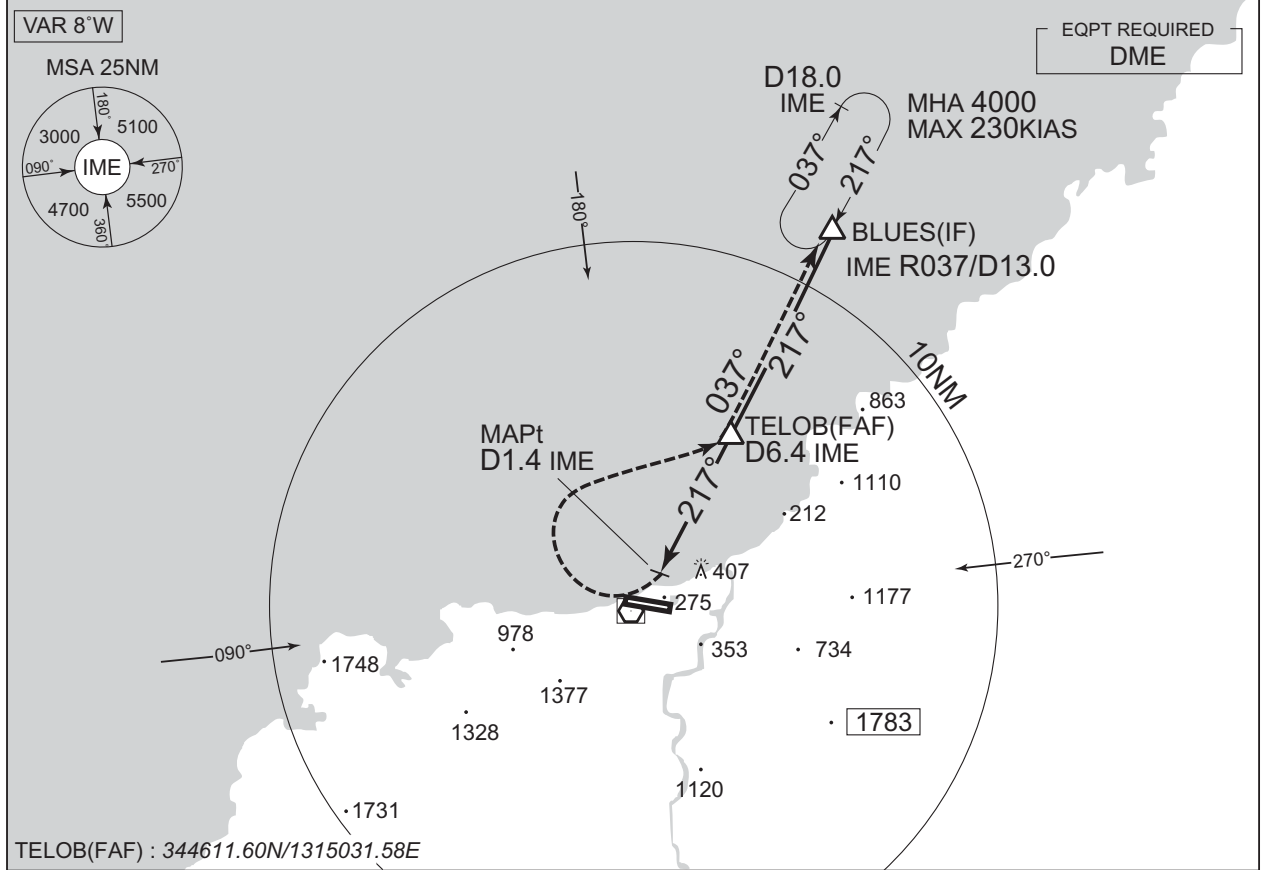
Circling to NORTH side of RWY only

INSTRUMENT APPROACH CHART

RJOW / IWAMI

VOR A

KOBE CONTROL 132.5 - 246.1 134.25 - 315.5	IWAMI VOR/DME 115.05 IME CH-97Y \equiv - 34°40'34"N/131°46'48"E	IWAMI RADIO 122.2 AFIS provided by Osaka Airport Office	NO RADAR
---	--	--	----------

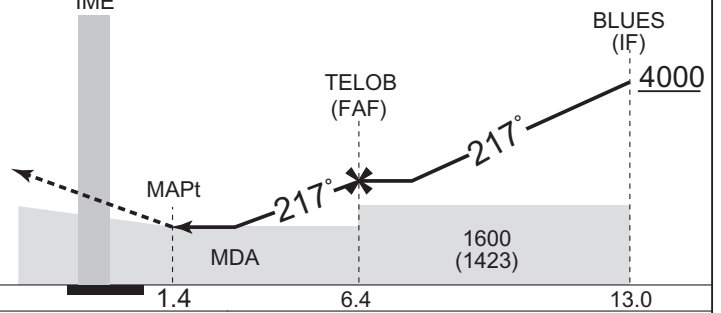


CHANGE: VAR. PROC course. TELOB established. Missed APCH course. HLDG course. MSA(BTN 270° and 360°).

MISSED APPROACH

Turn right, climb to 4000FT via IME R037 to BLUES and hold.
Contact IWAMI RADIO.

Timing not authorized for defining the MAPt.



MINIMA		AD elev. 177
CAT	CIRCLING	
	MDA(H)	VIS
A	1000 (823)	1600
B	1100 (923)	
C	1400 (1223)	2400
D	1600 (1423)	3200

Circling to NORTH side of RWY only

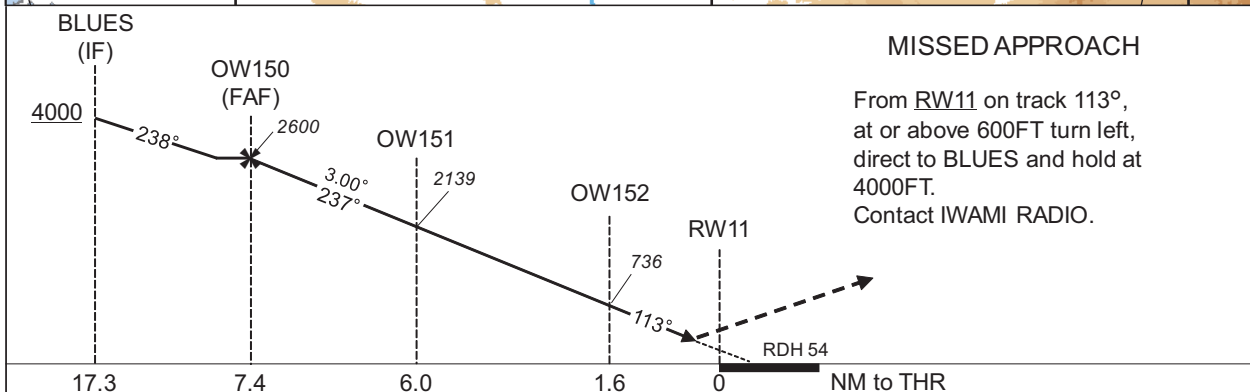
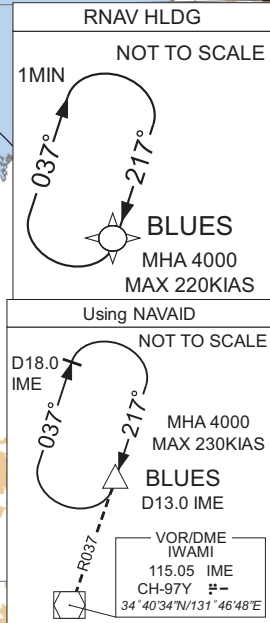
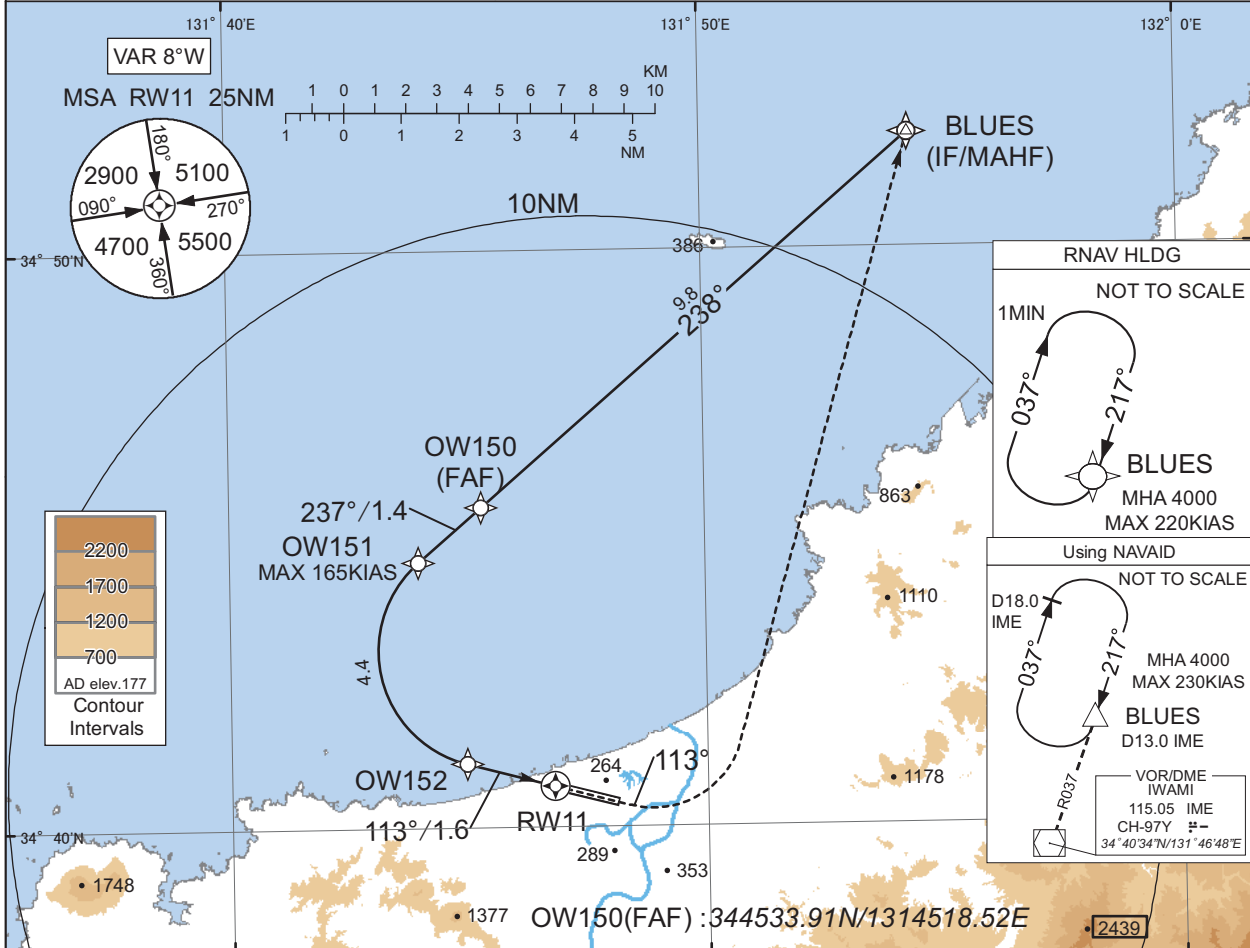
INSTRUMENT APPROACH CHART

RJOW / IWAMI

RNP RWY11(AR)

KOBE CONTROL 132.5 - 246.1 134.25 - 315.5	RNP AR RF required.	IWAMI RADIO 122.2 AFIS provided by Osaka Airport Office	NO RADAR
---	------------------------	--	----------

For uncompensated Baro-VNAV systems, procedure not authorized below -5°C / above 45°C



MISSED APPROACH
 From RW11 on track 113°, at or above 600FT turn left, direct to BLUES and hold at 4000FT. Contact IWAMI RADIO.

Missed APCH climb gradient MNM 5.0%

MINIMA	THR elev. 184	AD elev. 177
CAT	RNP 0.30	
	DA(H)	RVR/CMV
A	-	-
B	-	-
C	484(300)	1000
D	-	-

Authorization Required

MINIMA with Missed APCH climb gradient of 2.5% are not established.

CHANGE : HLDG course for using NAVAID.

INSTRUMENT APPROACH CHART

RJOW / IWAMI

RNP RWY11(AR)

Coding Table

Serial Number	Path Descriptor	Waypoint Identifier	Fly Over	Course °M(°T)	Magnetic Variation	Distance (NM)	Turn Direction	Altitude (FT)	Speed (KIAS)	VPA/ RDH (°/FT)	RNP Value
001	IF	BLUES	-	-	-8.2	-	-	+4000	-	-	1.0
002	TF	OW150	-	238 (229.3)	-8.2	9.8	-	2600	-	-	1.0
003	TF	OW151	-	237 (229.2)	-8.2	1.4	-	2139	-165	-3.00	0.3
004	RF Center: OWRF1 r=2.03NM	OW152	-	-	-8.2	4.4	L	736	-	-3.00	0.3
005	TF	RW11	Y	113 (104.8)	-8.2	1.6	-	238	-	-3.00/54	0.3
006	FA	-	-	113 (104.8)	-8.2	-	-	+600	-	-	1.0
007	DF	BLUES	-	-	-8.2	-	L	4000	-	-	1.0

Path	Waypoint Identifier	Inbound Course °M(°T)	Magnetic Variation	Outbound Time (MIN)	Turn Direction	Minimum Altitude (FT)	Maximum Altitude (FT)	Speed (KIAS)	RNP Value
Hold	BLUES	217 (208.7)	-8.2	1.0 (-13000)	R	4000	13000	-220 (-13000)	1.0

Waypoint Coordinates

Waypoint Identifier	Coordinates	RF Arc Center Identifier	Coordinates
BLUES	345159.02N / 1315423.09E	OWRF1	344304.90N / 1314534.53E
OW150	344533.91N / 1314518.52E		
OW151	344437.18N / 1314358.51E		
OW152	344107.26N / 1314456.99E		
RW11	344043.28N / 1314647.11E		

CHANGE : VAR. Course FM BLUES to OW150. RNAV HLDG established.

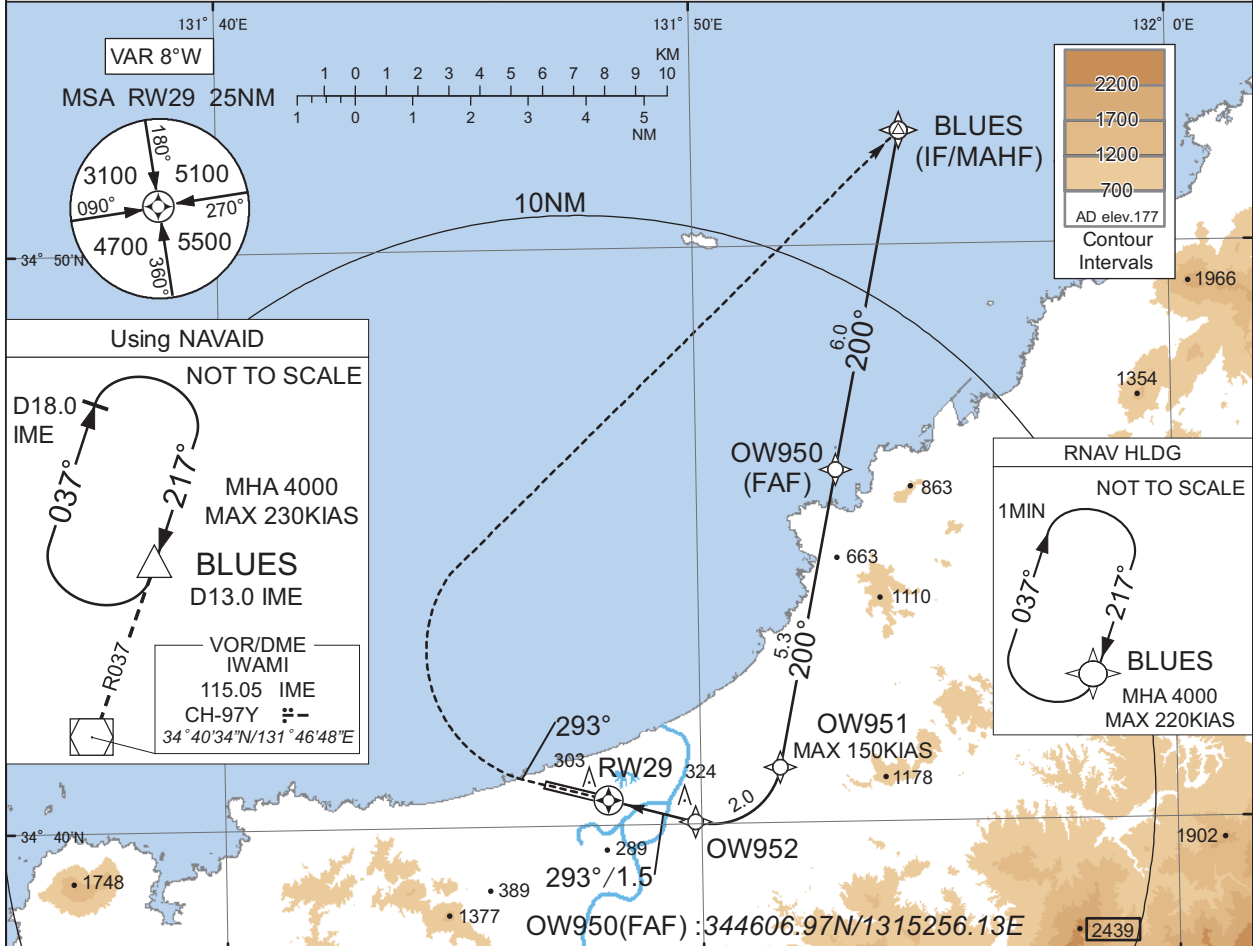
INSTRUMENT APPROACH CHART

RJOW / IWAMI

RNP RWY29(AR)

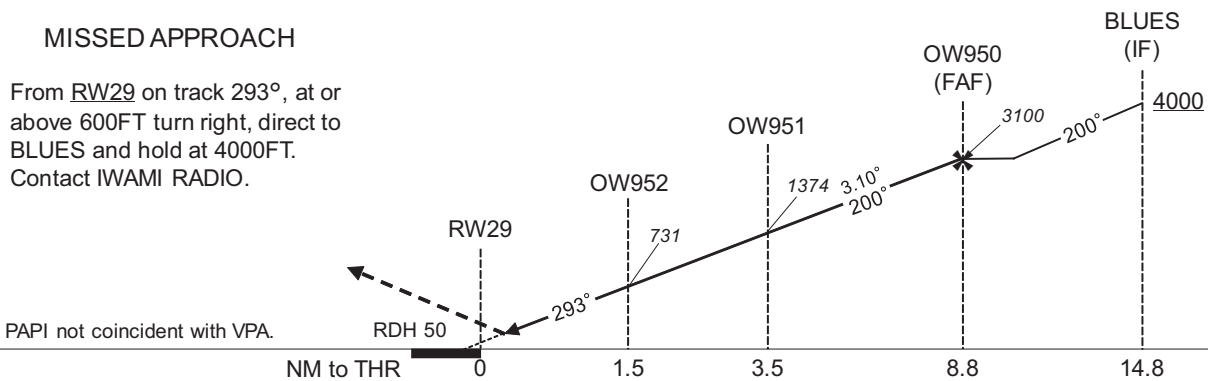
KOBE CONTROL 132.5 - 246.1 134.25 - 315.5	RNP AR RF required.	IWAMI RADIO 122.2 AFIS provided by Osaka Airport Office	NO RADAR
---	------------------------	--	----------

For uncompensated Baro-VNAV systems, procedure not authorized below -5°C / above 39°C



MISSED APPROACH

From RW29 on track 293°, at or above 600FT turn right, direct to BLUES and hold at 4000FT. Contact IWAMI RADIO.



Missed APCH climb gradient MNM 4.0%

CAT	THR elev. 171		AD elev. 177	
	RNP 0.16	RNP 0.30	DA(H)	CMV
A	-	-	-	-
B	-	-	-	-
C	471(300)	1400	489(318)	1400
D	-	-	-	-

MINIMA with Missed APCH climb gradient of 2.5% are not established.

Authorization Required

CHANGE : HLDG course for using NAVAID.

INSTRUMENT APPROACH CHART

RJOW / IWAMI

RNP RWY29(AR)

Coding Table

Serial Number	Path Descriptor	Waypoint Identifier	Fly Over	Course °M(°T)	Magnetic Variation	Distance (NM)	Turn Direction	Altitude (FT)	Speed (KIAS)	VPA/ RDH (°/FT)	RNP Value
001	IF	BLUES	-	-	-8.2	-	-	+4000	-	-	1.0
002	TF	OW950	-	200 (191.5)	-8.2	6.0	-	3100	-	-	1.0
003	TF	OW951	-	200 (191.5)	-8.2	5.3	-	1374	-150	-3.10	0.16 0.30
004	RF Center: OWRF2 r=1.20NM	OW952	-	-	-8.2	2.0	R	731	-	-3.10	0.16 0.30
005	TF	RW29	Y	293 (284.9)	-8.2	1.5	-	221	-	-3.10/50	0.16 0.30
006	FA	-	-	293 (284.9)	-8.2	-	-	+600	-	-	1.0
007	DF	BLUES	-	-	-8.2	-	R	4000	-	-	1.0

Path	Waypoint Identifier	Inbound Course °M(°T)	Magnetic Variation	Outbound Time (MIN)	Turn Direction	Minimum Altitude (FT)	Maximum Altitude (FT)	Speed (KIAS)	RNP Value
Hold	BLUES	217 (208.7)	-8.2	1.0 (-13000)	R	4000	13000	-220 (-13000)	1.0

Waypoint Coordinates

Waypoint Identifier	Coordinates	RF Arc Center Identifier	Coordinates
BLUES	345159.02N / 1315423.09E	OWRF2	344112.62N / 1315014.52E
OW950	344606.97N / 1315256.13E		
OW951	344058.27N / 1315140.08E		
OW952	344002.90N / 1314952.21E		
RW29	344026.72N / 1314803.07E		

CHANGE : VAR. PROC course. RNAV HLDG established.

RJOW / IWAMI

Visual REP



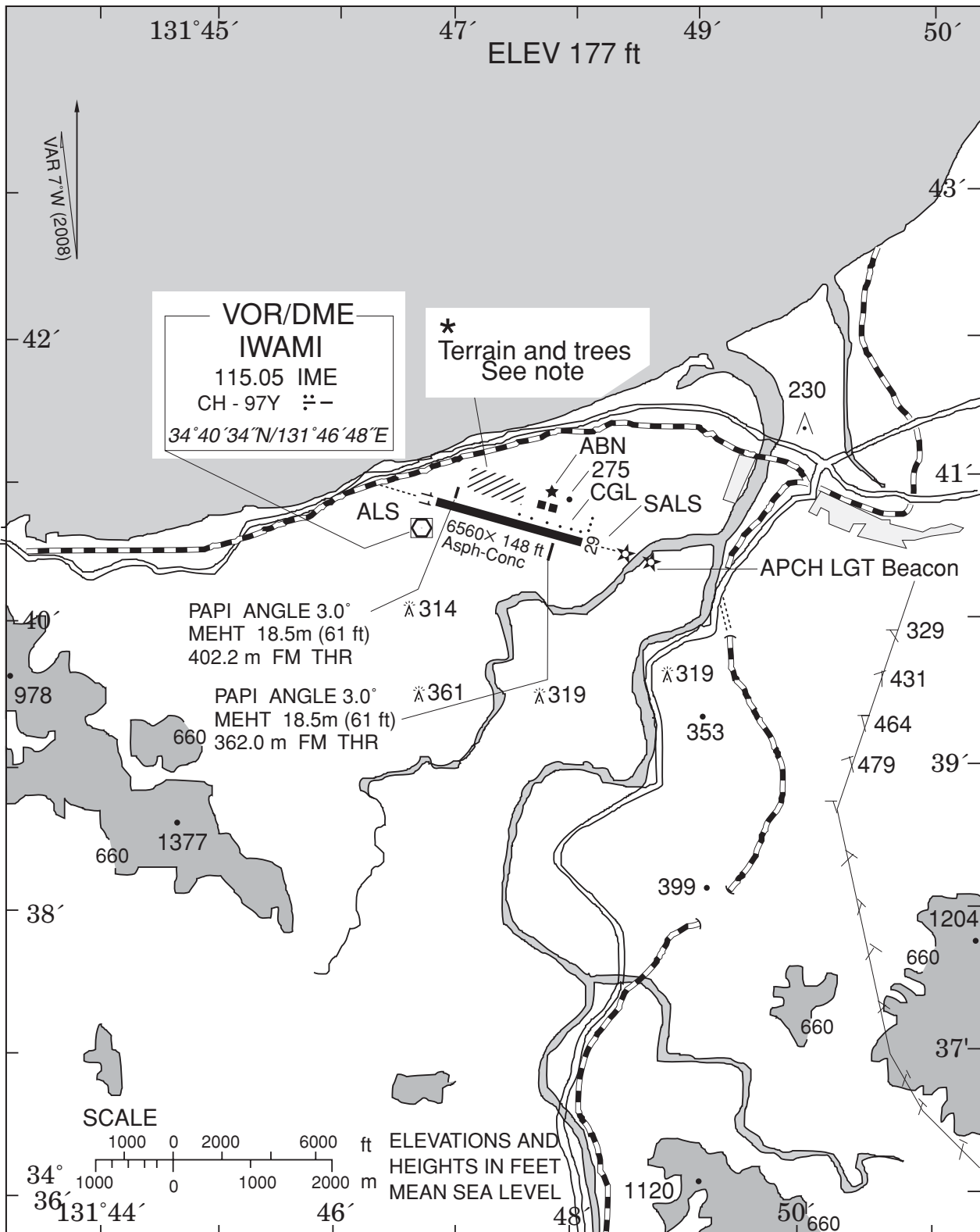
CHANGE : Call sign(REMOTE→RADIO).

※図中に標高を示す数字がある場合、単位はメートル(m)である。The unit of measurement used to express elevation is meter(m).

Call sign	BRG / DIST from ARP	Remarks
魚待 Uomachi	038°T / 6.0NM	岬 Cape
高山 Takayama	266°T / 8.8NM	岬 Cape
日原 Nichihara	166°T / 8.9NM	駅 Station

RJOW / IWAMI

LDG CHART



*Note : RWY may be invisible on downwind leg of northside traffic pattern according to altitude.

CHANGE : Obstacle added

RJOW / IWAMI

Minimum Vectoring Altitude CHART

