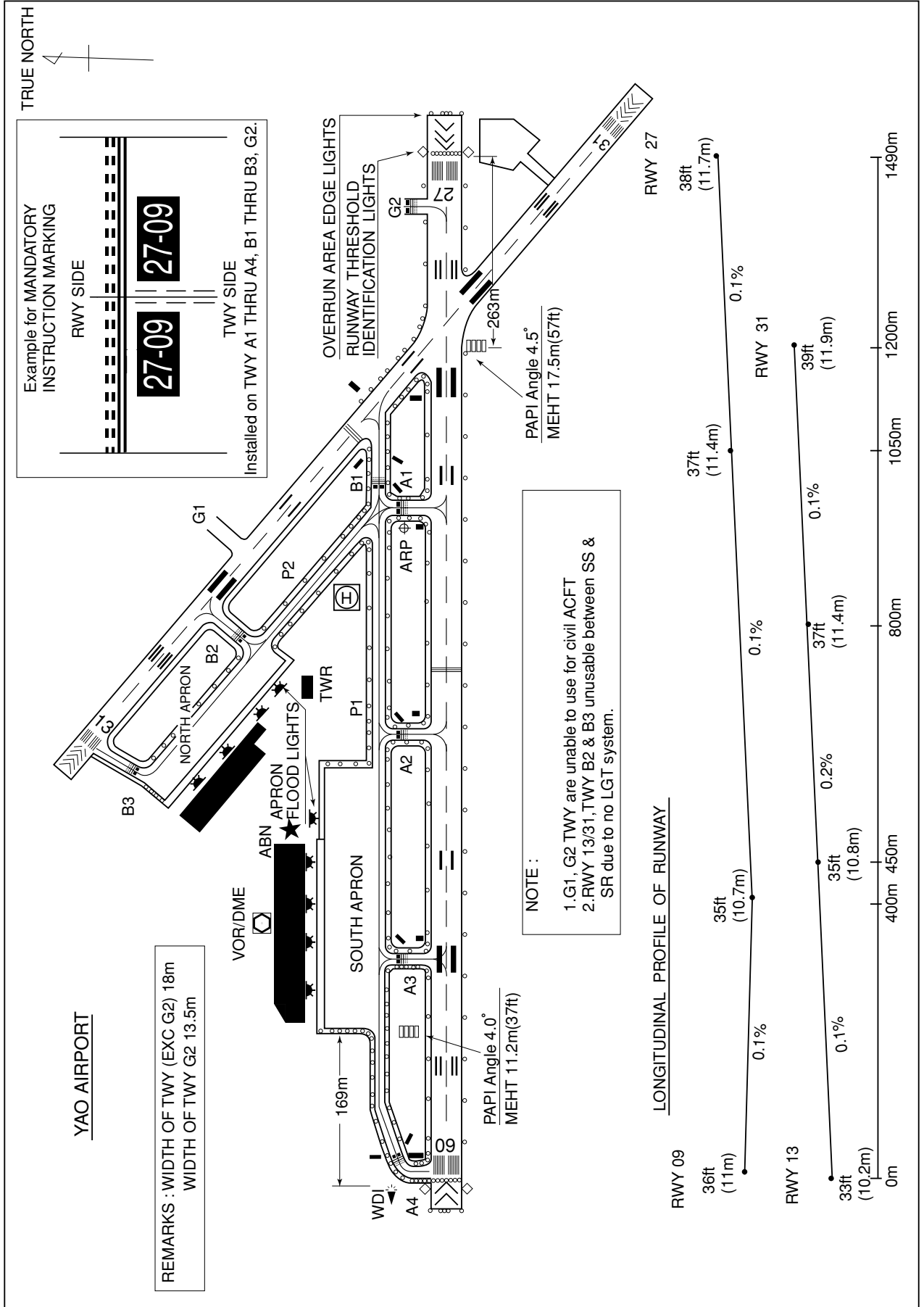


RJOY / YAO

AD CHART



**INTENTIONALLY LEFT BLANK**

STANDARD DEPARTURE CHART - INSTRUMENT

RJOY / YAO

SID

IZUMI TWO DEPARTURE

RWY 27/31 : Turn left,...

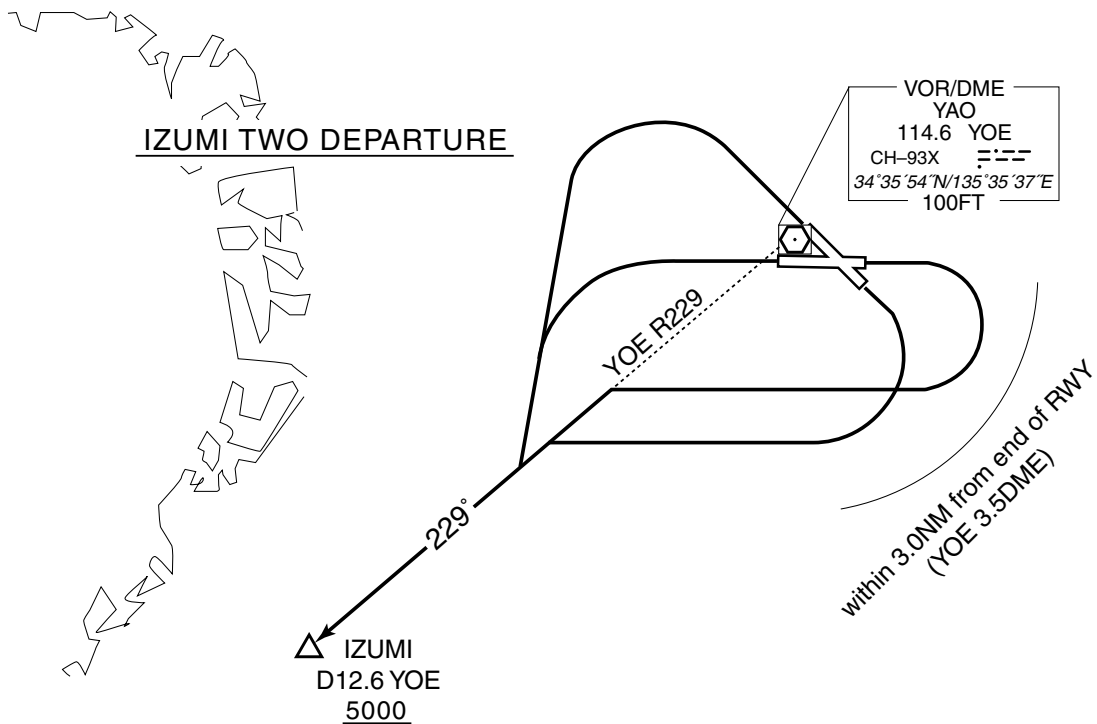
RWY 09/13 : Complete right turn within 3.0NM (YOE 3.5DME)...

...climb via YOE R229 to IZUMI.

Cross IZUMI at or above 5000FT.

Note : When take off RWY27/31/13(09), following climb gradient should be maintained until 800FT(1400FT).

Speed (Knots)	60	90	120	150	180	210
Rate (Feet/Min)	300	450	600	750	900	1050



STANDARD DEPARTURE CHART- INSTRUMENT

RJOY / YAO

SID and TRANSITION

ASUKA SEVEN DEPARTURE

- RWY 27 : Turn right,...
- RWY 09/13 : Complete right turn within 3.0NM (YOE 3.5DME)...
- RWY 31 : Turn left,...
- ... climb via YOE R281 to YOE 7.1DME (ITE R176), turn right to intercept and proceed via KCE R086 to ASUKA.

Cross ASUKA at or above 9000FT. (for NAGOYA TRANSITION)

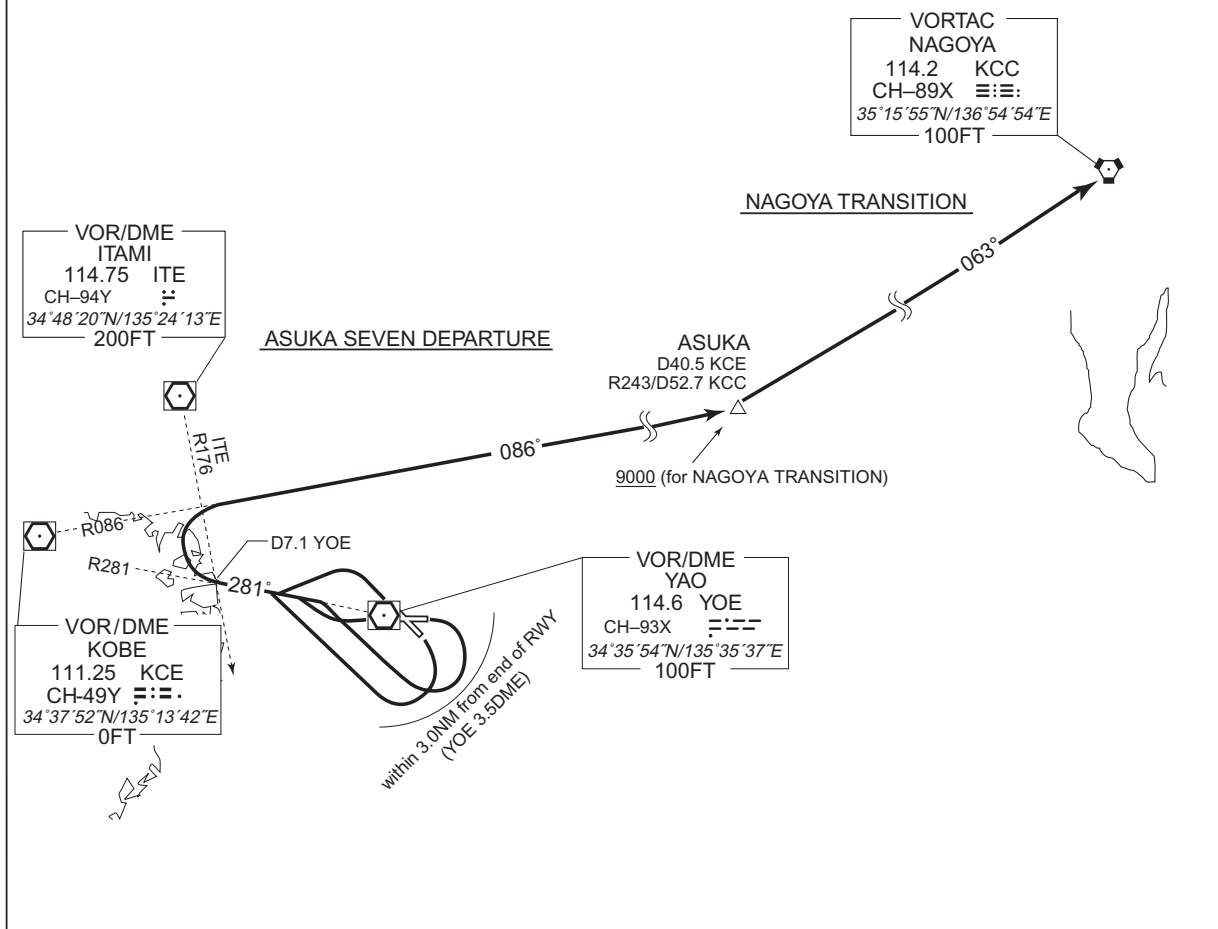
Note : When take off RWY 31(13/27) [09], following climb gradient should be maintained until 500FT (1100FT) [1400FT].

Speed (Knots)	60	90	120	150	180	210
Rate (Feet/Min)	300	450	600	750	900	1050

NAGOYA TRANSITION

From over ASUKA, proceed via KCC R243 to KCC VORTAC.

CHANGE : PROC renamed. Radial FM KCE.

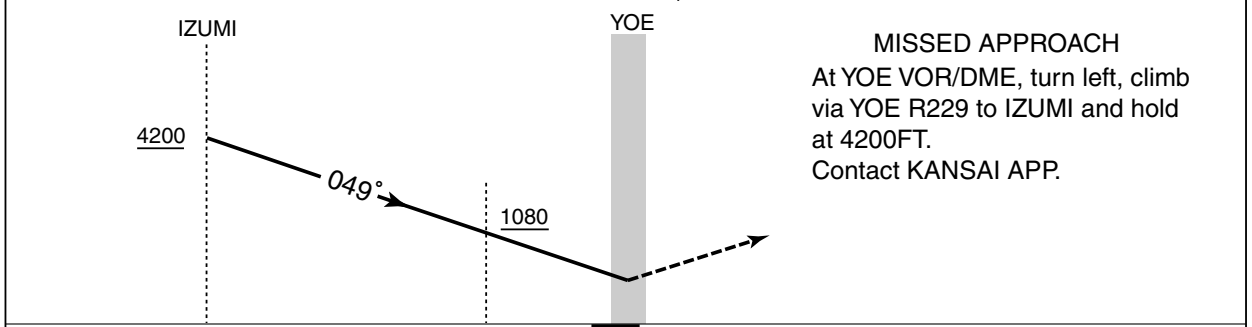
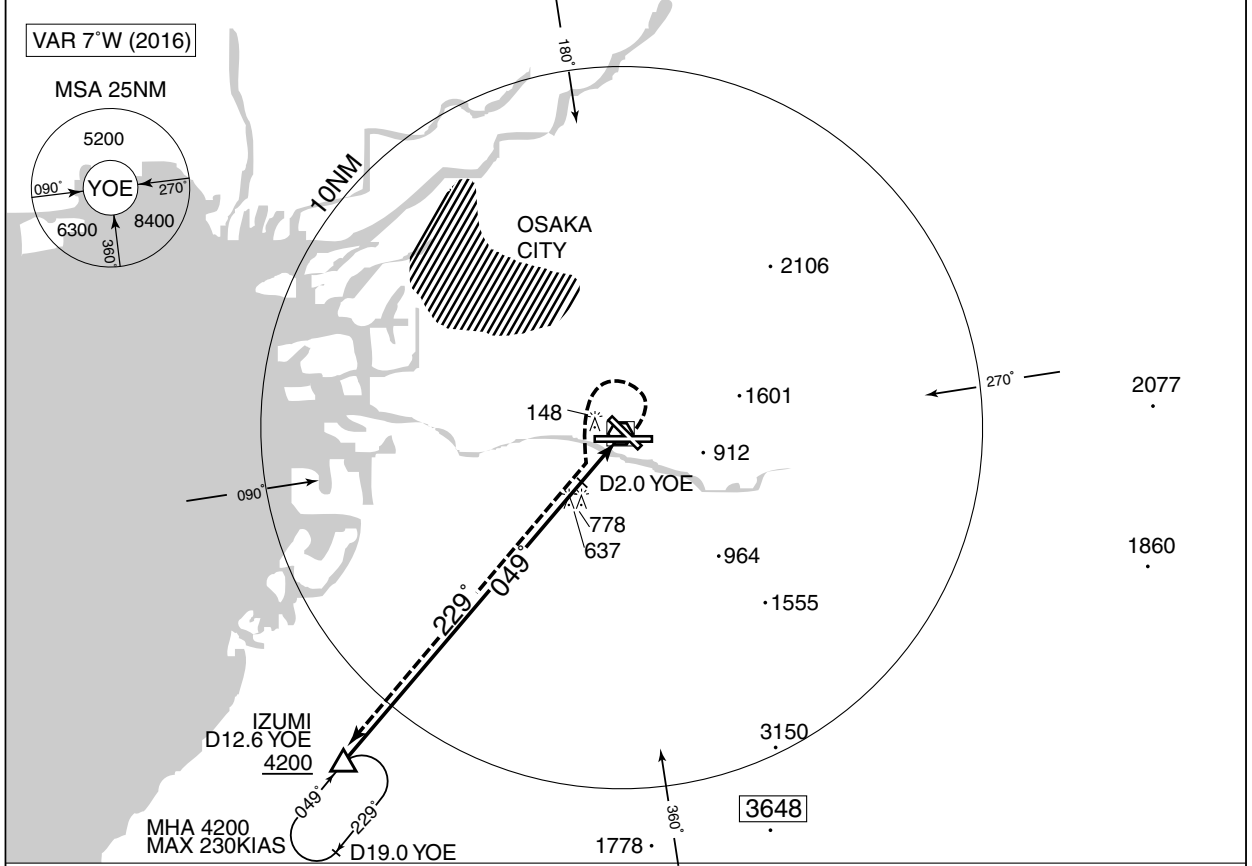


INSTRUMENT APPROACH CHART

RJOY / YAO

VOR/DME C

KANSAI APP 120.45 - 124.7 261.2	YAO VOR/DME 114.6 YOE CH-93X 34°35'54"N / 135°35'37"E	YAO TOWER 124.35 - 126.2	RADAR AVBL
---------------------------------------	--	-----------------------------	------------



12.6                      2.0                      0                      DME to YOE

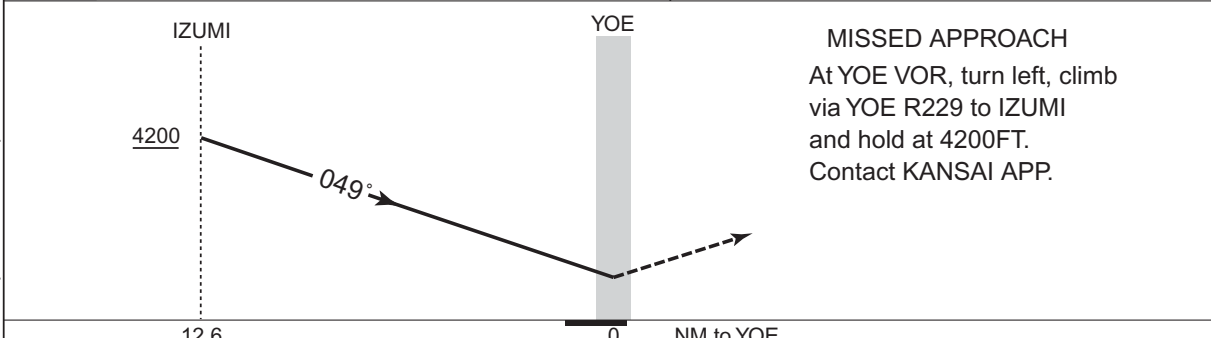
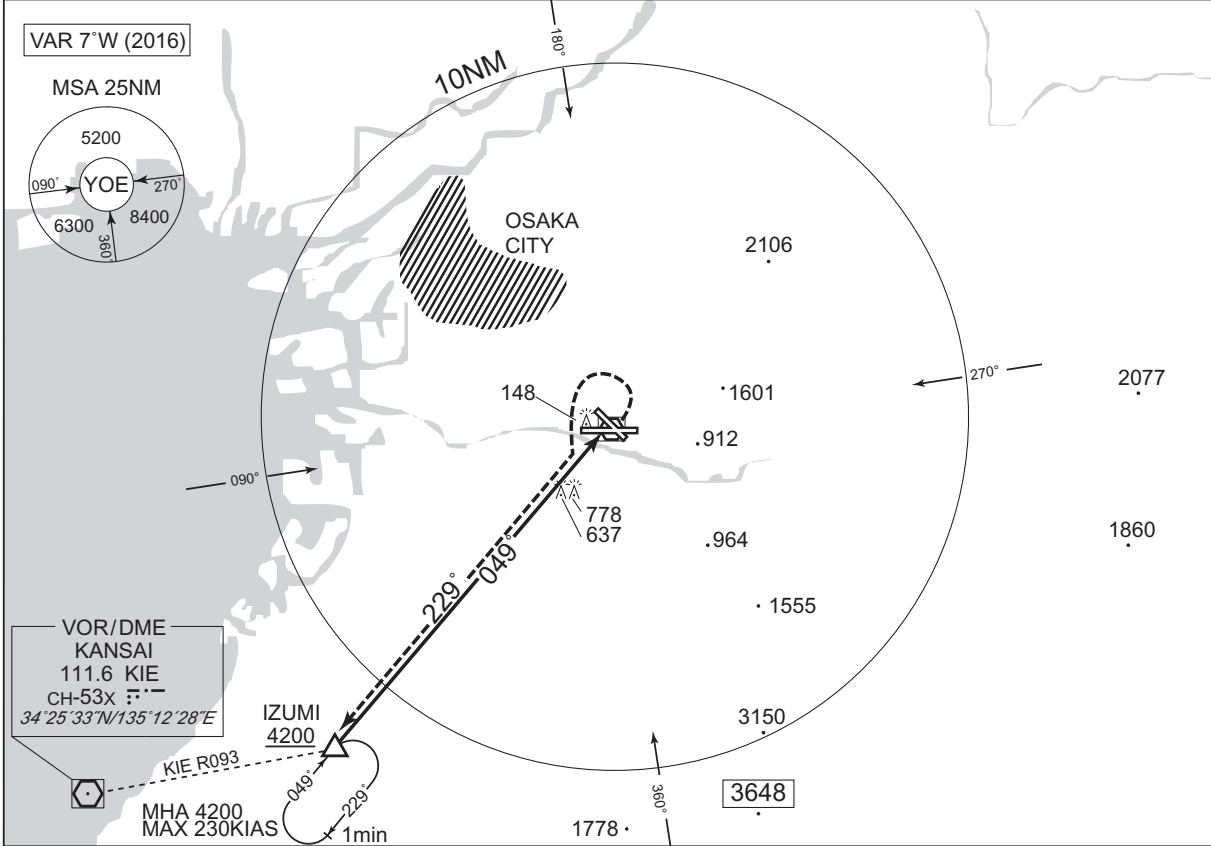
<b>MINIMA</b>		AD elev. 33	
CAT	CIRCLING		
	MDA(H)	VIS	
A	840 (807)		1600
B	-		-
C	-		-
D	-		-

INSTRUMENT APPROACH CHART

RJOY / YAO

VOR E

KANSAI APP 120.45 - 124.7 261.2	YAO VOR/DME 114.6 YOE CH-93X 34°35'54"N / 135°35'37"E	YAO TOWER 124.35 - 126.2	RADAR AVBL
---------------------------------------	--	-----------------------------	------------



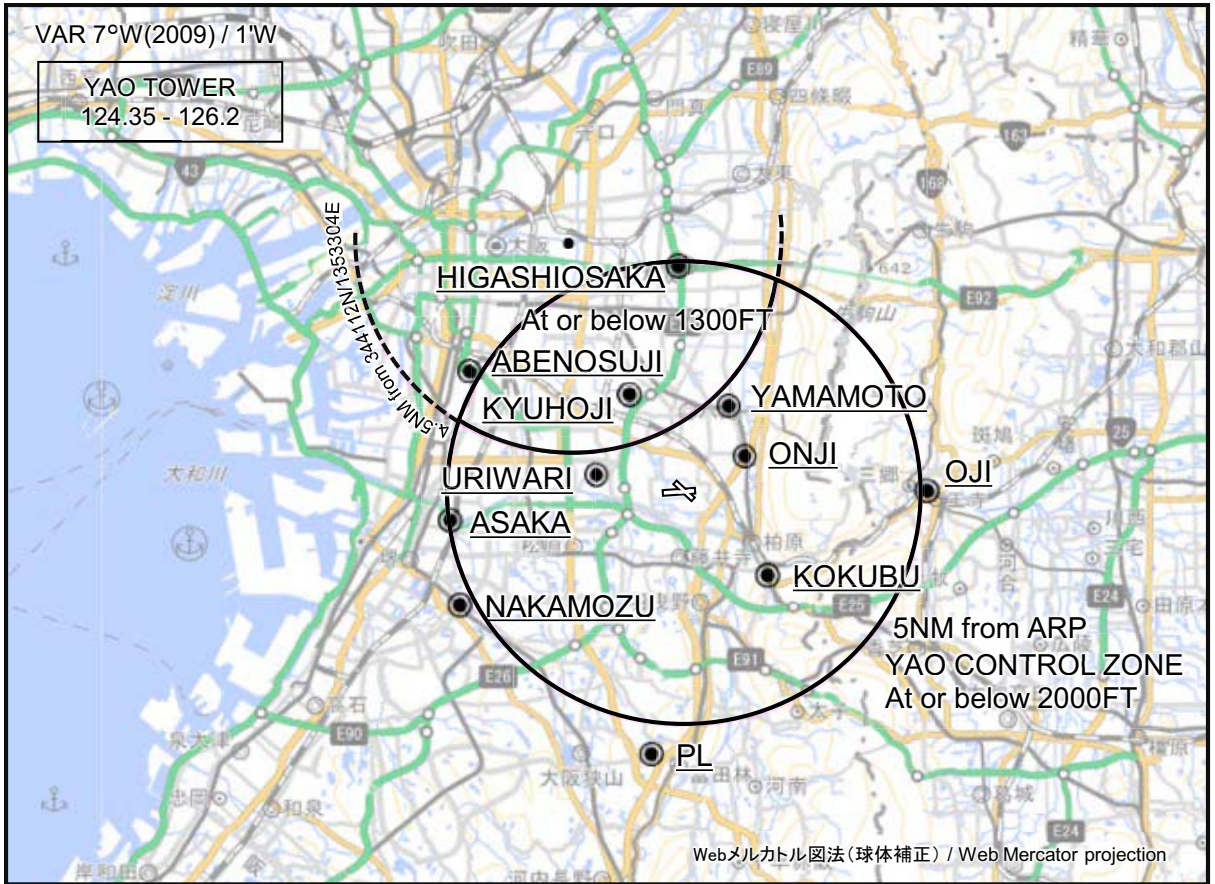
**MISSED APPROACH**  
At YOE VOR, turn left, climb via YOE R229 to IZUMI and hold at 4200FT. Contact KANSAI APP.

CHANGE : KANSAI VOR/DME updated(KNE→KIE).

MINIMA		AD elev. 33
CAT	CIRCLING	
	MDA(H)	VIS
A	1080 (1047)	1600
B		
C	-	-
D	-	-

RJOY / YAO

Visual REP



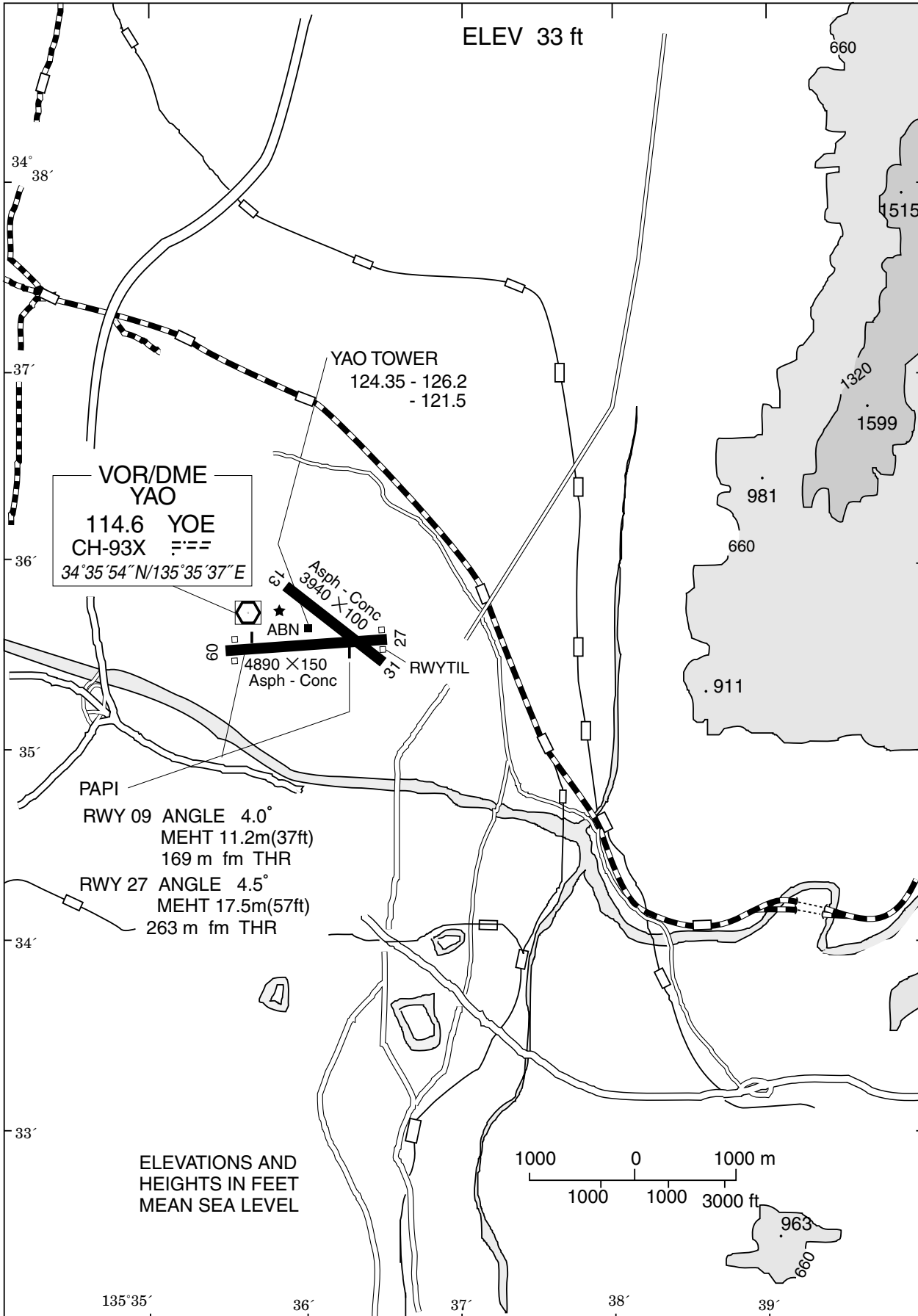
※図中に標高を示す数字がある場合、単位はメートル(m)である。The unit of measurement used to express elevation is meter(m).

CHANGE : Map updated. BRG/DIST from ARP.

Call sign	BRG / DIST from ARP	Remarks
東大阪 Higashiosaka	358°T / 4.9NM	東大阪ジャンクション Junction
阿倍野筋 Abenosuji	300°T / 5.3NM	阿倍野霊園 Cemetery Park
浅香 Asaka	263°T / 5.0NM	大和川曲り角 Curve of the Yamato River
中百舌鳥 Nakamozu	243°T / 5.3NM	南海中百舌鳥駅 Station
ピーエル PL	187°T / 5.7NM	PL教団の塔 Monument
王寺 Oji	089°T / 5.1NM	JR王寺駅 Station
国分 Kokubu	136°T / 2.5NM	近鉄国分駅 Station
瓜破 Uriwari	281°T / 2.0NM	瓜破霊園 Cemetery Park
久宝寺 Kyuhoji	331°T / 2.4NM	久宝寺緑地 Wooded Area
山本 Yamamoto	026°T / 2.1NM	近鉄山本駅 Station
恩智 Onji	058°T / 1.5NM	近鉄恩智駅 Station

RJOY / YAO

LDG CHART

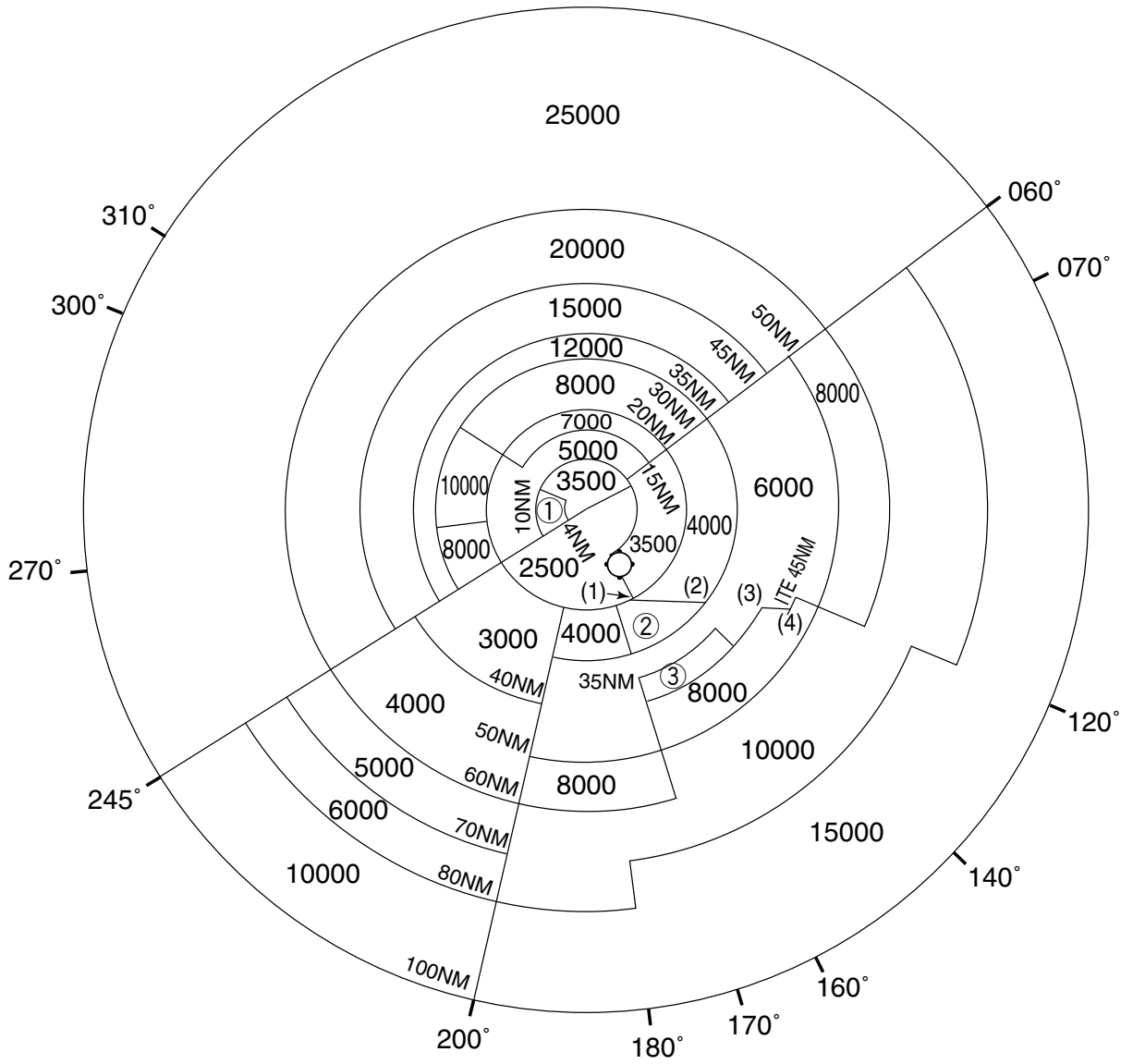




RJOY / YAO

Minimum Vectoring Altitude CHART

VAR 7°W (2011)



- ① 4500 (1) 342930N/1353527E
- ② 5000 (2) 342925N/1355432E
- ③ 7000 (3) 342918N/1360849E
- (4) 342924N/1361335E

CENTER : 344752N/1352550E (RJOO No.1 RADAR SITE)  
 CENTER : 344659N/1352600E (RJOO No.2 RADAR SITE)