

STANDARD DEPARTURE CHART-INSTRUMENT

RJOZ / OZUKI

SID

CHANGE : PROC course(OZUKI REVERSAL FOUR DEPARTURE). PROC renamed(OZUKI REVERSAL FOUR DEPARTURE). Note deleted.

OZUKI REVERSAL FOUR DEPARTURE

RWY 17: Climb via OCT R170, turn left to OCT TACAN within 10.0DME.

Cross OCT TACAN at or above 4000FT.

Then proceed via OCT R330, turn right to OCT TACAN within 5.0DME.

Cross OCT TACAN at or above 5000FT or specified altitude.

RWY 35: Not established.

KUGA TRANSITION

From over OCT TACAN, via OCT R170 to intercept and proceed via IWT R267 to IWT TACAN.

FUKUOKA TRANSITION

From over OCT TACAN, via OCT R170 to intercept and proceed via DGC R080 (MRA 11000FT) to DGC VORTAC.

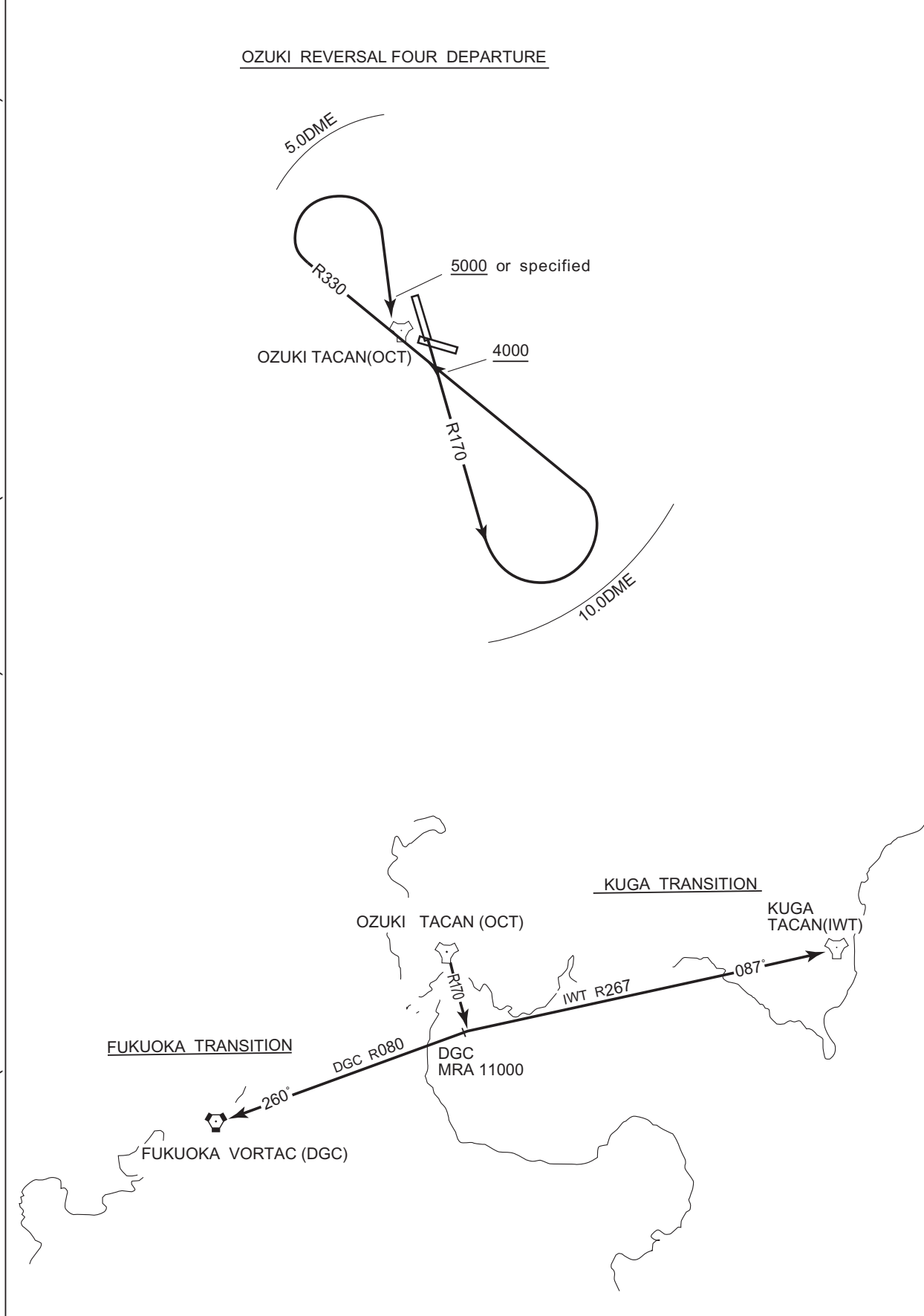
Note: This TRANSITION is for TACAN equipped aircraft only.

STANDARD DEPARTURE CHART-INSTRUMENT

RJOZ / OZUKI

SID

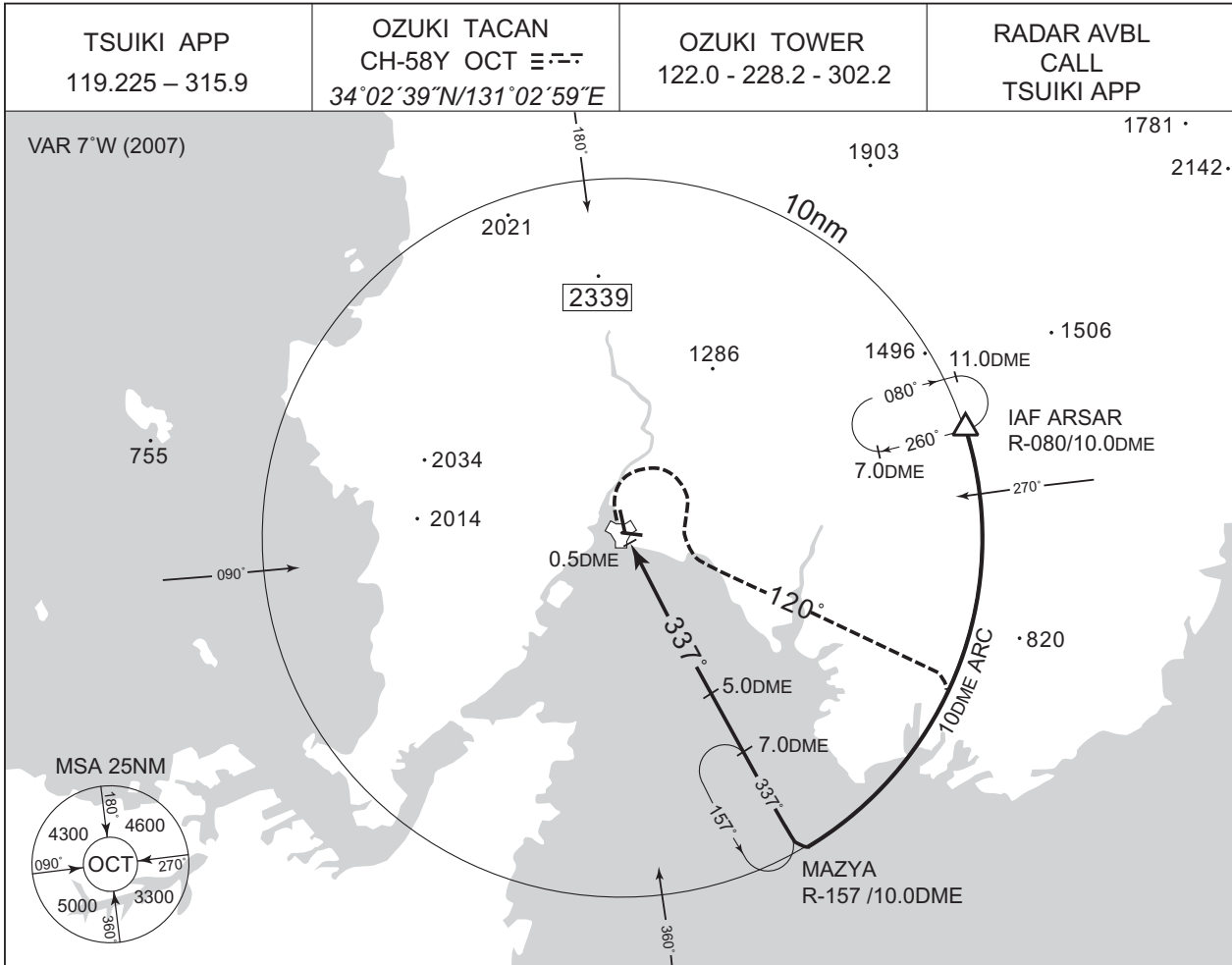
CHANGE : PROC course(OZUKI REVERSAL FOUR DEPARTURE). PROC renamed(OZUKI REVERSAL FOUR DEPARTURE).



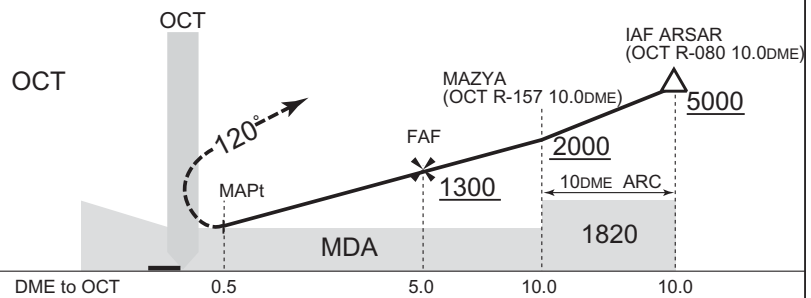
INSTRUMENT APPROACH CHART

RJOZ / OZUKI

TACAN B



MISSED APPROACH
 At 0.5 DME prior to OCT TACAN,
 turn right climb via OCT R-120 to
 2,000ft, turn right and proceed via OCT
 10DME ARC to MAZYA then
 proceed via OCT R-157 to 7DME
 and hold.
 Contact TSUIKI APP.

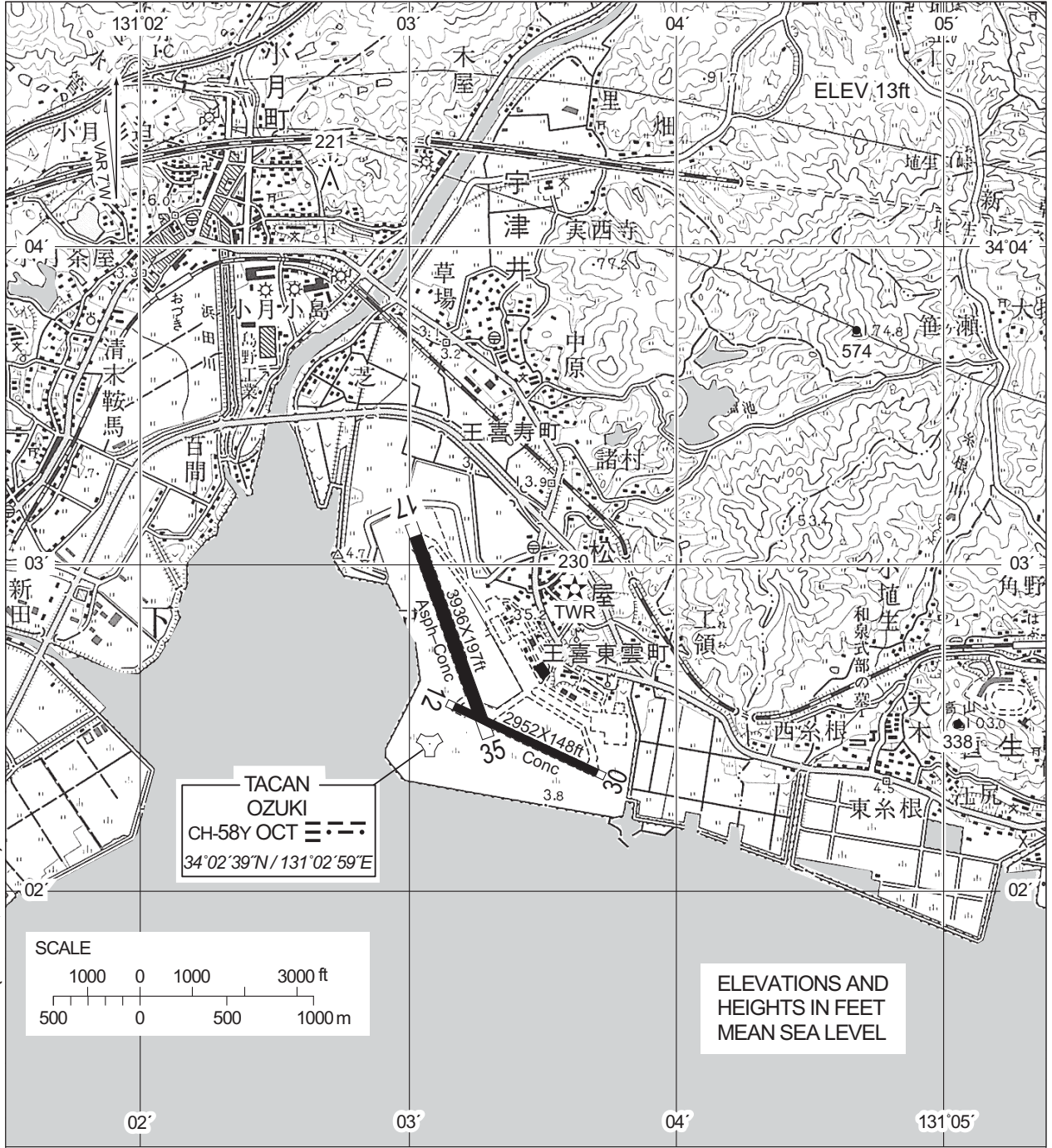


MINIMA		AD elev. 13
CAT	CIRCLING	
	MDA(H)	VIS
A	900 (887)	1600
B	-	-
C	-	-
D	-	-

CHANGE : FREQ of OZUKI TOWER abolished(126.2,236.8)

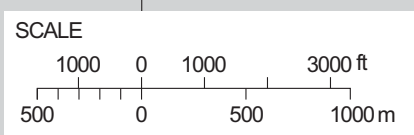
RJOZ / OZUKI

LDG CHART



CHANGE : FREQ of OZUKI TOWER abolished(126.2,236.8)

TACAN
 OZUKI
 CH-58Y OCT
 34°02'39'N / 131°02'59'E



ELEVATIONS AND
 HEIGHTS IN FEET
 MEAN SEA LEVEL

AERODROME LIGHTING

Aerodrome beacon : Alternating flashing
 white / green
 Runway edge lights : white
 Threshold lighting : green
 Other lighting : Blue taxiway edge lights,
 lighted wind direction indicator,
 obstruction light,
 take-off target light,
 angle of approach lights.

RADIO DATA

TWR 122.0, 228.2, 302.2, EU-EV

FACILITIES AVAILABLE

Weather, fuel (JETA-1 PLUS), Hangar