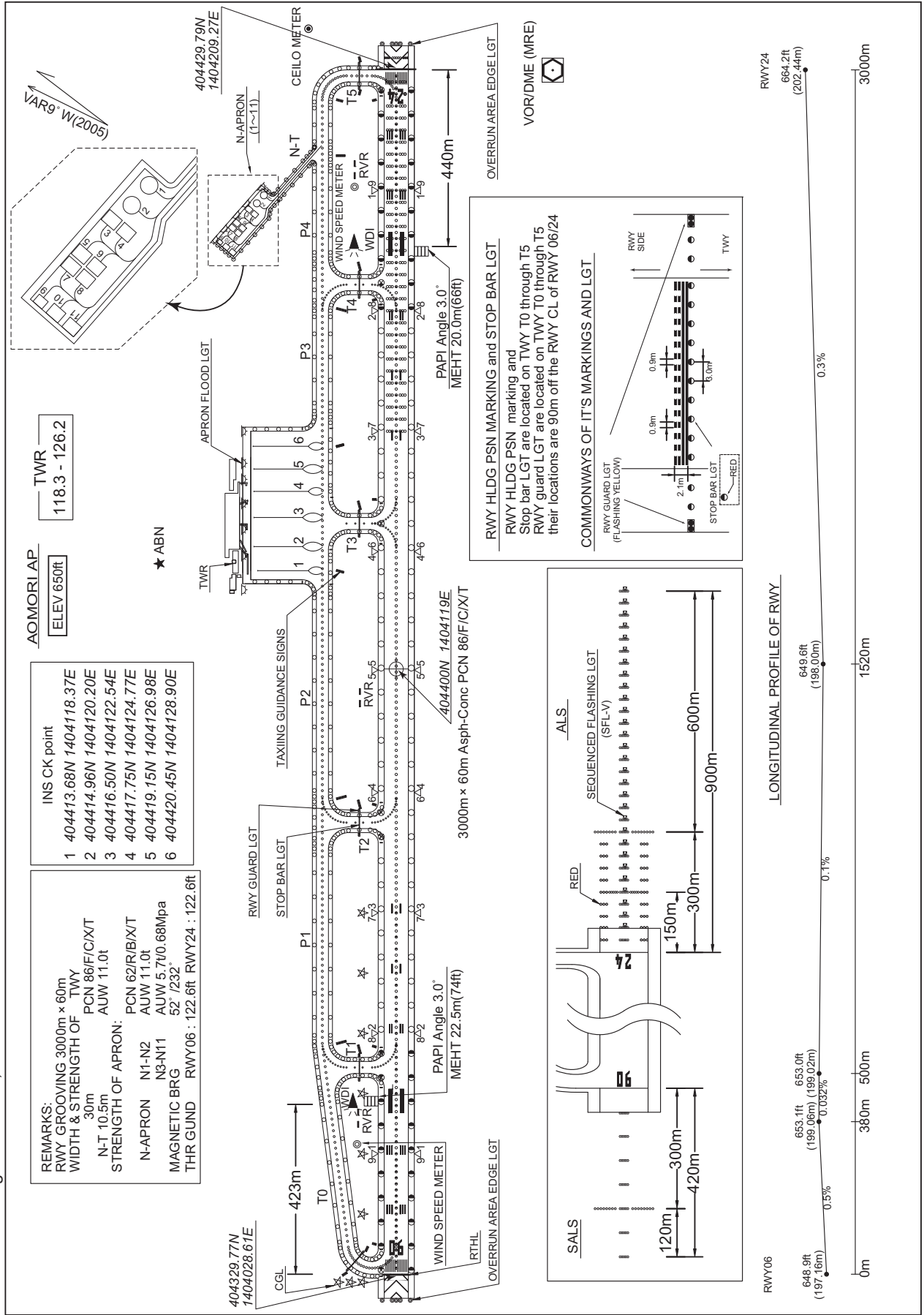


RJSA / AOMORI

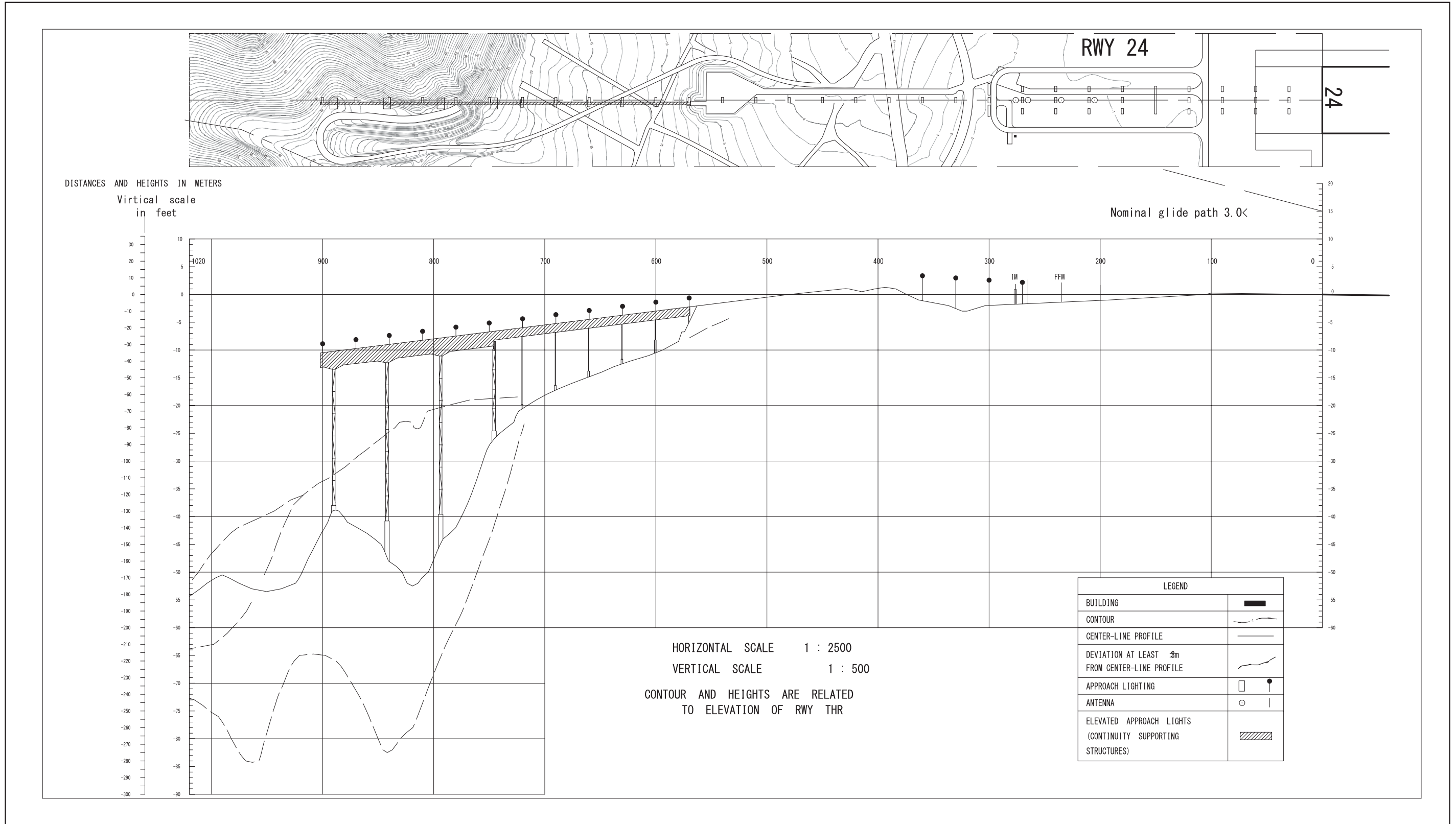
AD CHART

CHANGE : Strength of TWY N, N-APRON.



**INTENTIONALLY LEFT BLANK**

PRECISION APPROACH TERRAIN CHART



STANDARD DEPARTURE CHART-INSTRUMENT

RJSA / AOMORI

SID and TRANSITION

IWAKI SEVEN DEPARTURE

RWY06 : Climb RWY HDG to 1100FT, turn left HDG 292° to intercept and proceed via MRE R331 to 12.0DME, turn left, via HWE R208 to GONOU.  
Cross MRE R331/8.0DME at or above 3600FT, cross HWE R208/63.0DME at or above 7000FT, cross GONOU at or above 9000FT.

RWY24 : Climb RWY HDG to 1200FT, via MRE R239 to GONOU.  
Cross GONOU at or above 9000FT.

Note RWY24 : No turn before DER.  
5.0% climb gradient required up to 1200FT.  
OBST ALT 782FT located at 0.8NM 223° FM end of RWY24.

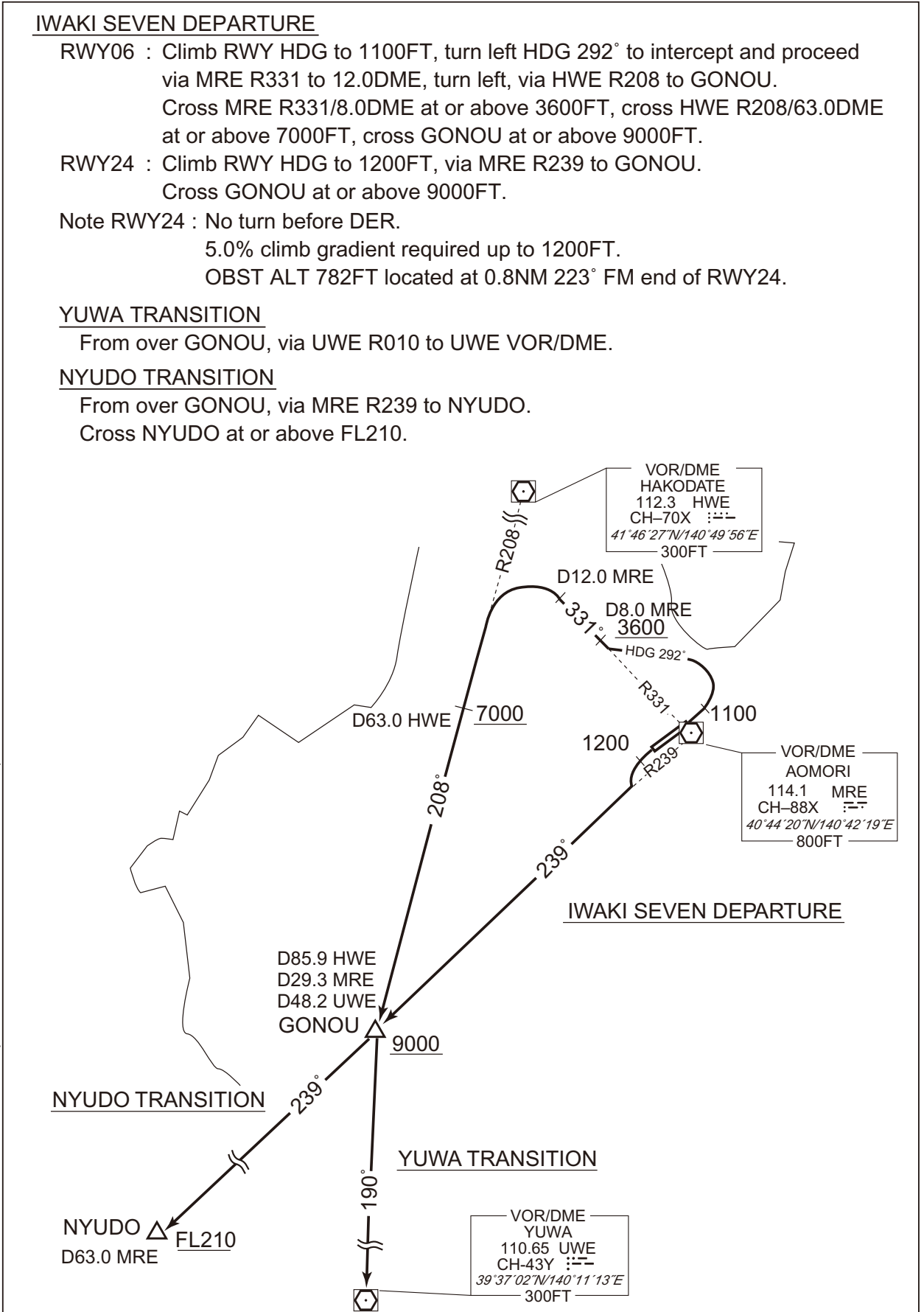
YUWA TRANSITION

From over GONOU, via UWE R010 to UWE VOR/DME.

NYUDO TRANSITION

From over GONOU, via MRE R239 to NYUDO.  
Cross NYUDO at or above FL210.

CHANGE : PROC renamed(IWAKI SEVEN DEPARTURE). PROC course.



STANDARD DEPARTURE CHART-INSTRUMENT

RJSA / AOMORI

SID

AOMORI REVERSAL THREE DEPARTURE

RWY06 : Climb RWY HDG to 1100FT, turn left HDG 286°...

RWY24 : Climb RWY HDG to 1200FT, turn right HDG 016°...

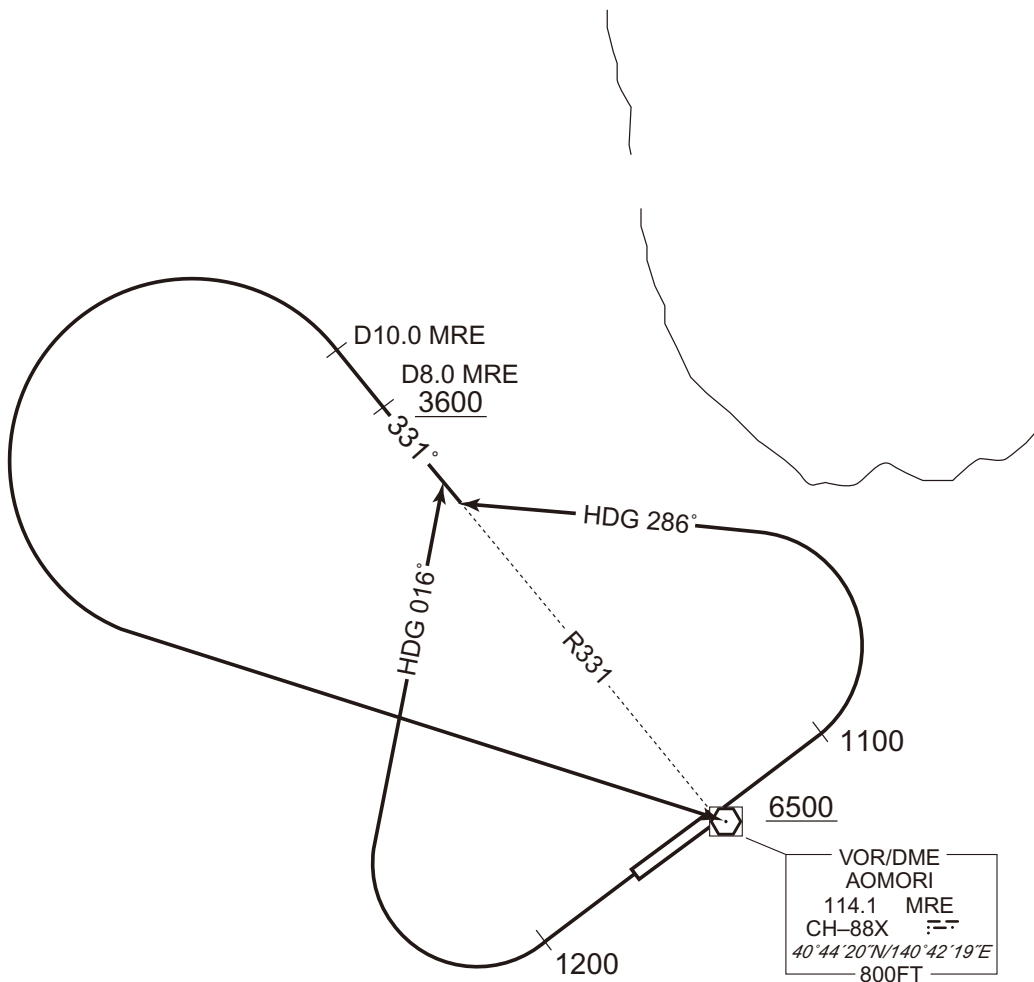
...to intercept and proceed via MRE R331 to 10.0DME, turn left,  
direct to MRE VOR/DME.

Cross MRE R331/8.0DME at or above 3600FT, cross MRE VOR/DME  
at or above 6500FT.

Note RWY24 : 5.0% climb gradient required up to 1200FT.

OBST ALT 782FT located at 0.8NM 223° FM end of RWY24.

CHANGE : PROC renamed. PROC course.



STANDARD DEPARTURE CHART-INSTRUMENT

RJSA / AOMORI

RNAV SID

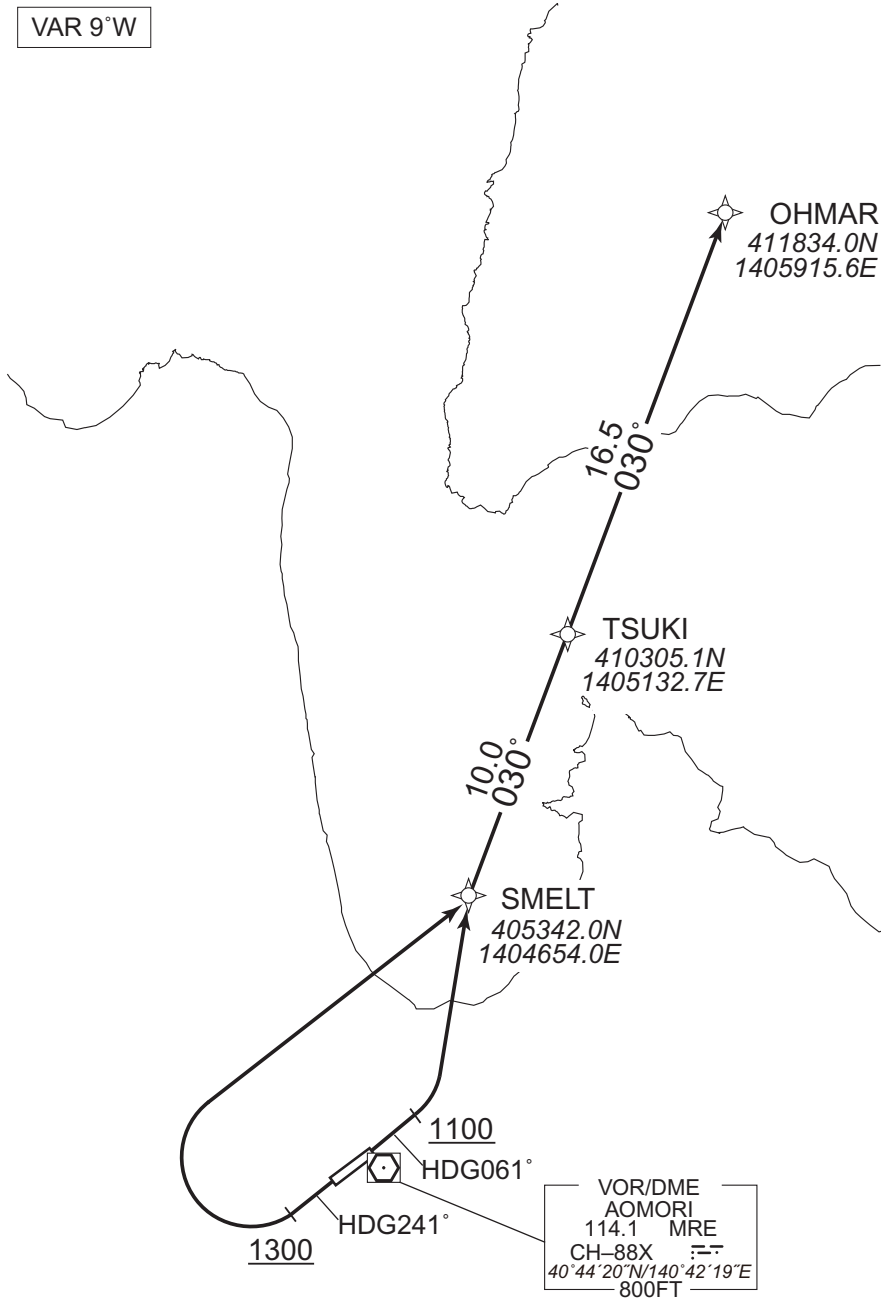
OHMAR TWO DEPARTURE

RNP1

Note GNSS required.

VAR 9°W

CHANGE : Navigation Specification(Basic RNP1 → RNP1).



RWY06 : Climb on HDG061° at or above 1100FT, turn left direct to SMELT, to TSUKI, to OHMAR.

RWY24 : Climb on HDG241° at or above 1300FT, turn right direct to SMELT, to TSUKI, to OHMAR.

NOTE RWY24 : 5.0% climb gradient required up to 1300FT.  
OBST ALT 782FT located at 0.8NM 223° FM end of RWY24.

STANDARD DEPARTURE CHART-INSTRUMENT

RJSA / AOMORI

RNAV SID

OHMAR TWO DEPARTURE

RWY06

Serial Number	Path Descriptor	Waypoint Identifier	Fly Over	Course °M(°T)	Magnetic Variation	Distance (NM)	Turn Direction	Altitude (FT)	Speed (KIAS)	Vertical Angle	Navigation Specification
001	VA	-	-	061 (051.8)	-9.3	-	-	+1100	-	-	RNP1
002	DF	SMELT	-	-	-9.3	-	L	-	-	-	RNP1
003	TF	TSUKI	-	030 (020.5)	-9.3	10.0	-	-	-	-	RNP1
004	TF	OHMAR	-	030 (020.5)	-9.3	16.5	-	-	-	-	RNP1

RWY24

Serial Number	Path Descriptor	Waypoint Identifier	Fly Over	Course °M(°T)	Magnetic Variation	Distance (NM)	Turn Direction	Altitude (FT)	Speed (KIAS)	Vertical Angle	Navigation Specification
001	VA	-	-	241 (231.8)	-9.3	-	-	+1300	-	-	RNP1
002	DF	SMELT	-	-	-9.3	-	R	-	-	-	RNP1
003	TF	TSUKI	-	030 (020.5)	-9.3	10.0	-	-	-	-	RNP1
004	TF	OHMAR	-	030 (020.5)	-9.3	16.5	-	-	-	-	RNP1

CHANGE : Navigation Specification(Basic RNP1 → RNP1).

STANDARD DEPARTURE CHART-INSTRUMENT

RJSA / AOMORI

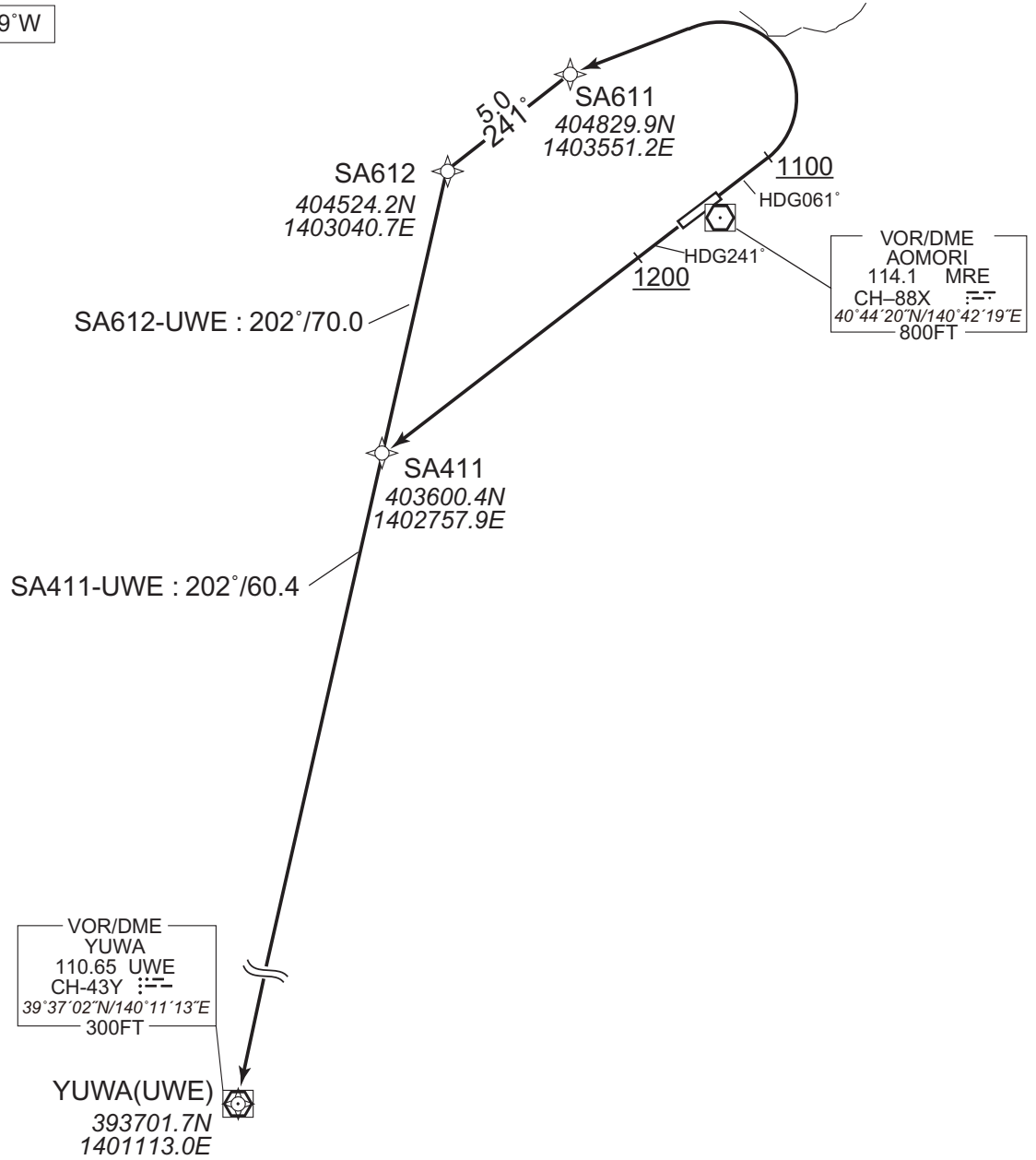
RNAV SID

SHIRAKAMI TWO DEPARTURE

RNP1

Note GNSS required.

VAR 9°W



CHANGE : Navigation Specification(Basic RNP1 → RNP1).

- RWY06 : Climb on HDG061° at or above 1100FT, turn left direct to SA611, to SA612, to UWE.
- RWY24 : Climb on HDG241° at or above 1200FT, direct to SA411, to UWE.
- NOTE RWY24 : 5.0% climb gradient required up to 1200FT.  
OBST ALT 782FT located at 0.8NM 223° FM end of RWY24.



STANDARD DEPARTURE CHART-INSTRUMENT

RJSA / AOMORI

RNAV SID

SHIRAKAMI TWO DEPARTURE

RWY06

Serial Number	Path Descriptor	Waypoint Identifier	Fly Over	Course °M(°T)	Magnetic Variation	Distance (NM)	Turn Direction	Altitude (FT)	Speed (KIAS)	Vertical Angle	Navigation Specification
001	VA	-	-	061 (051.8)	-9.3	-	-	+1100	-	-	RNP1
002	DF	SA611	-	-	-9.3	-	L	-	-	-	RNP1
003	TF	SA612	-	241 (231.7)	-9.3	5.0	-	-	-	-	RNP1
004	TF	UWE	-	202 (192.4)	-9.3	70.0	-	-	-	-	RNP1

RWY24

Serial Number	Path Descriptor	Waypoint Identifier	Fly Over	Course °M(°T)	Magnetic Variation	Distance (NM)	Turn Direction	Altitude (FT)	Speed (KIAS)	Vertical Angle	Navigation Specification
001	VA	-	-	241 (231.8)	-9.3	-	-	+1200	-	-	RNP1
002	DF	SA411	-	-	-9.3	-	-	-	-	-	RNP1
003	TF	UWE	-	202 (192.3)	-9.3	60.4	-	-	-	-	RNP1

CHANGE : Navigation Specification(Basic RNP1 → RNP1).

STANDARD ARRIVAL CHART-INSTRUMENT

RJSA / AOMORI

STAR

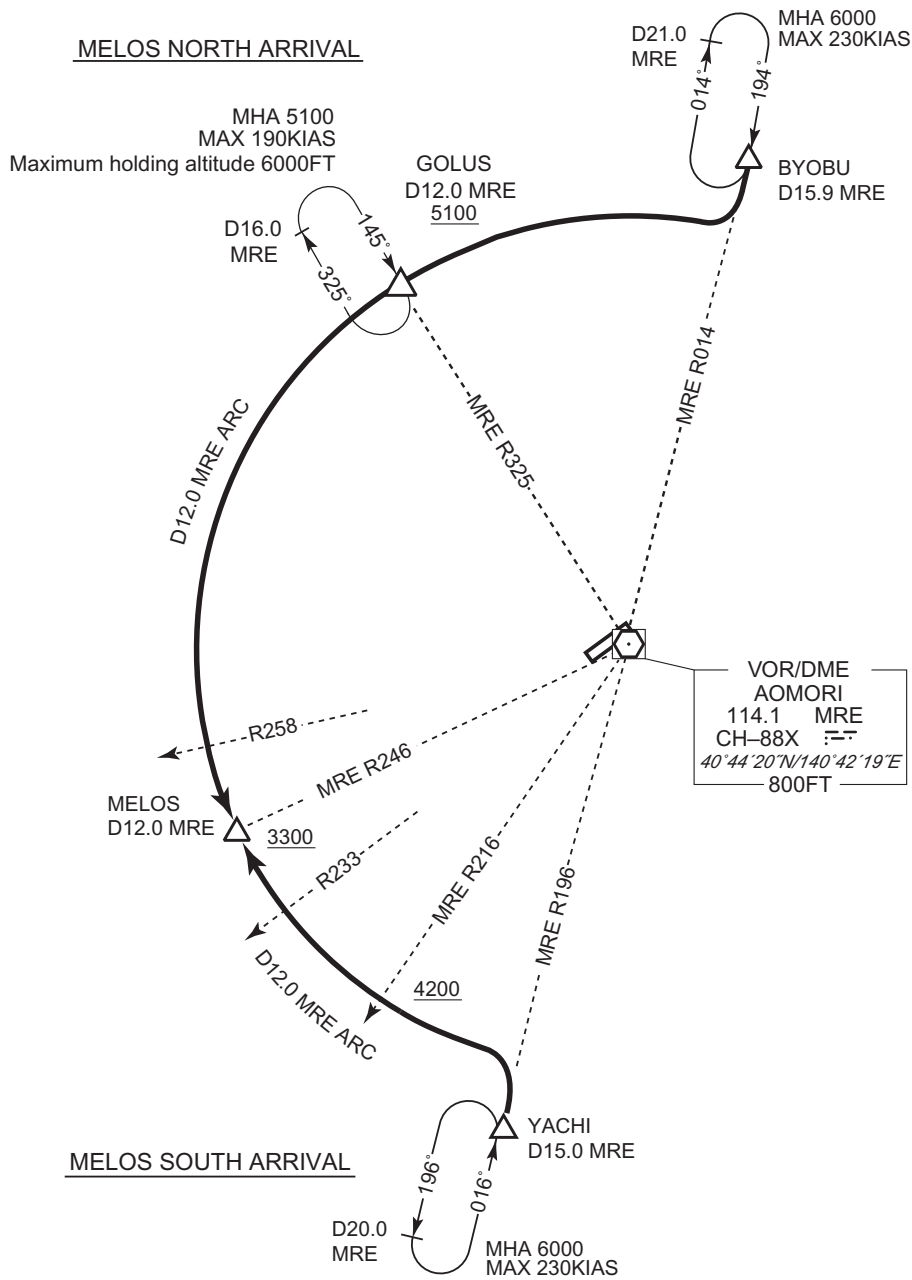
MELOS NORTH ARRIVAL

From over BYOBU, proceed via MRE 12.0DME counterclockwise ARC to MELOS via GOLUS.  
Cross GOLUS at or above 5100FT, cross MELOS at or above 3300FT.

MELOS SOUTH ARRIVAL

From over YACHI, proceed via MRE 12.0DME clockwise ARC to MELOS.  
Cross MRE R216 at or above 4200FT.  
Cross MELOS at or above 3300FT.

CHANGE : PROC course(MELOS NORTH ARRIVAL). GOLUS established.



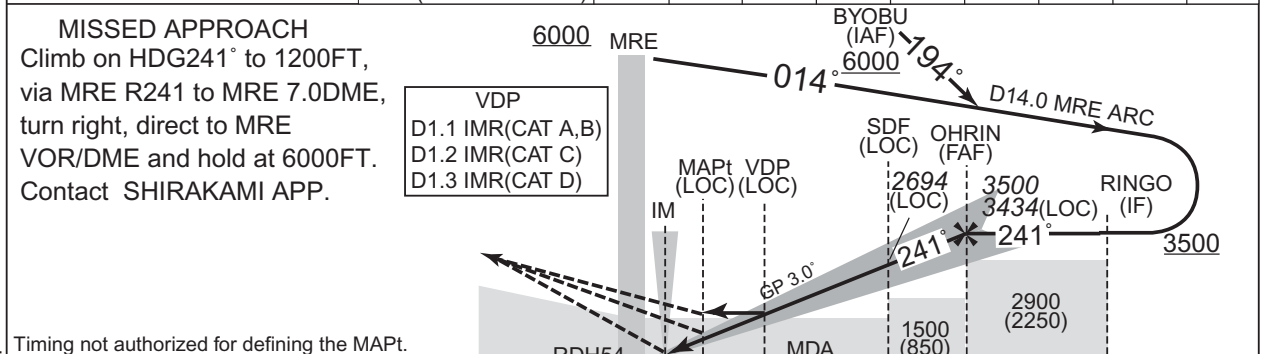
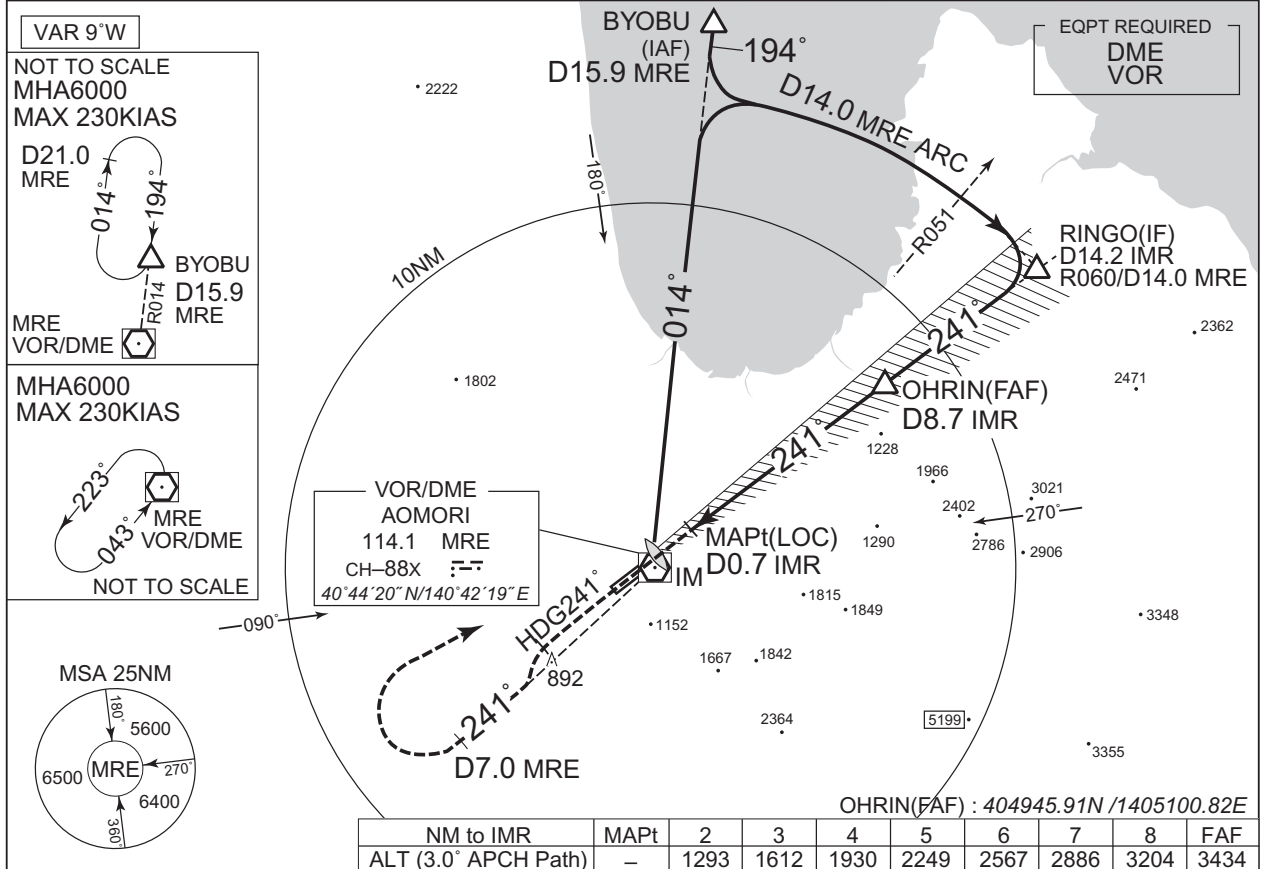
**INTENTIONALLY LEFT BLANK**

INSTRUMENT APPROACH CHART

RJSA / AOMORI

ILS Z or LOC Z RWY24 (CAT II & III)

SHIRAKAMI APP 119.25 - 315.3 - 120.65	ILS-LOC 111.9 IMR ILS-GP 331.1 ILS-DME CH-56X	AOMORI TOWER 118.3 - 126.2	RADAR AVBL
--	--	-------------------------------	------------



DME to IMR	0.2	0.3	0.7	6.4	8.7	14.2
NM to THR	0	0.1	0.5	6.2	8.5	14.0

Missed APCH climb gradient MNM 4.0%

**MINIMA**      THR elev. **664**      AD elev. **650**

CAT	CAT III			CAT II		CAT I		LOC		CIRCLING	
	RVR	DA(DH)	RA	RVR	DA(H)	RVR/CMV	MDA(H)	RVR/CMV	MDA(H)	VIS	
A							990 (340)	900	1220 (570)	1600	
B	100	764 (100)	92	300	864 (200)	550	1010 (360)	1000			
C							1030 (380)				
D							1050 (400)				

MINIMA with Missed APCH climb gradient of 2.5% are not established.  
Circling to NORTH side of RWY only.

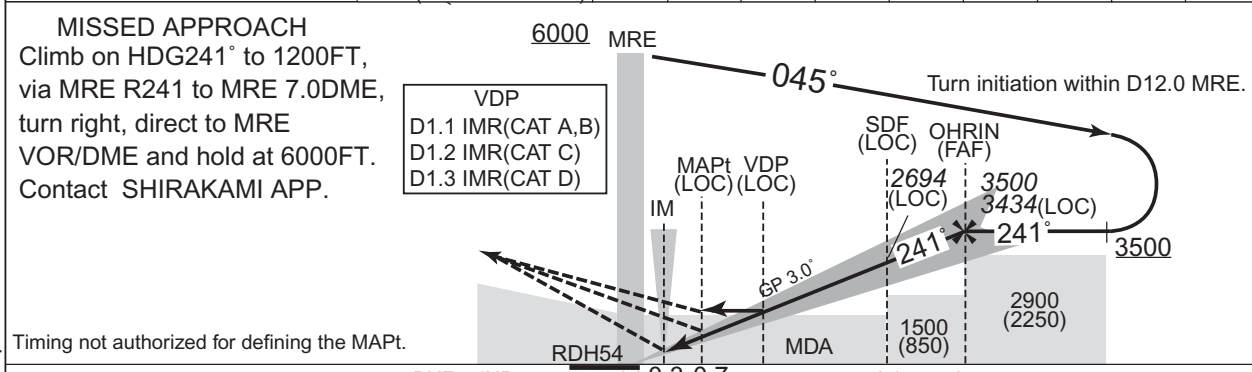
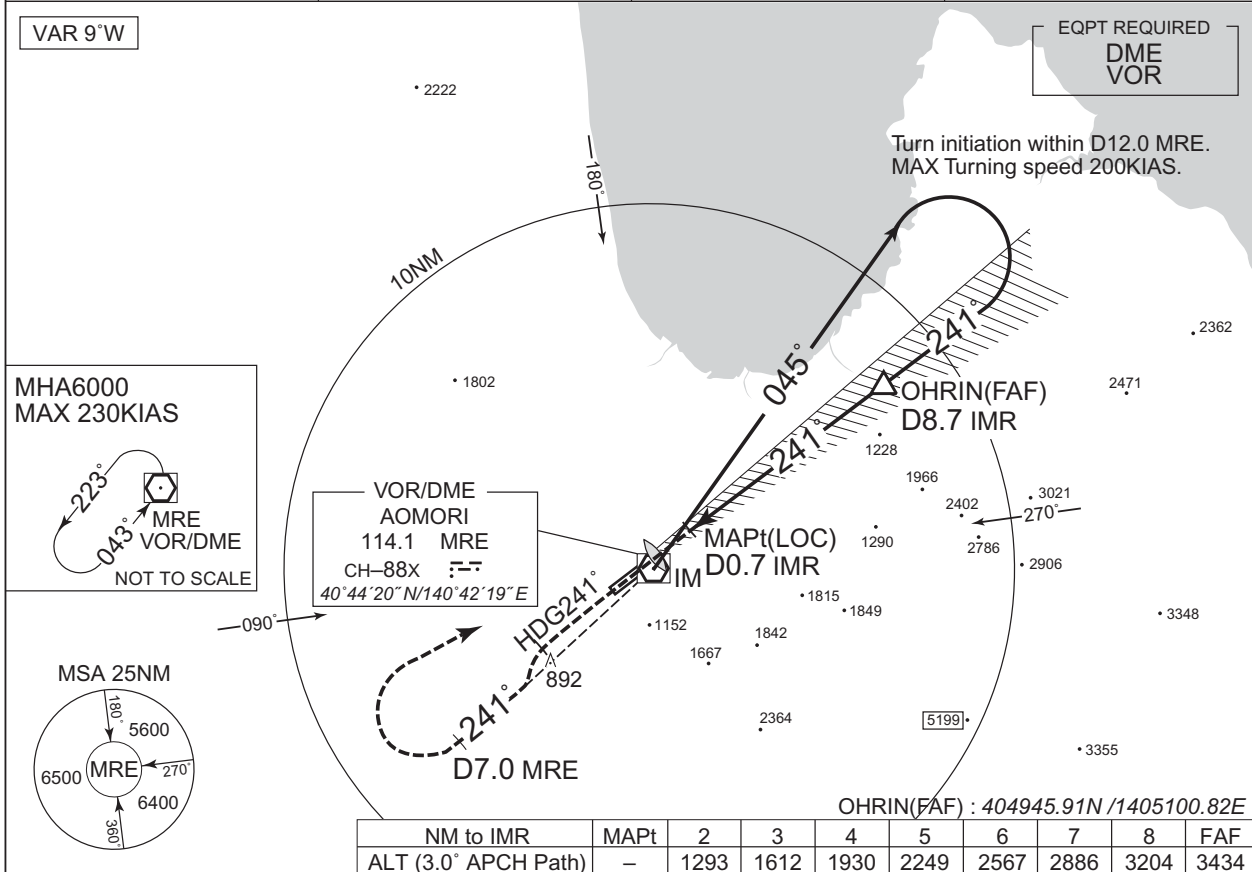
CHANGE : ATC call sign and FREQ. Description of RADAR Service. Missed APCH PROC.

INSTRUMENT APPROACH CHART

RJSA / AOMORI

ILS Y or LOC Y RWY24 (CAT II & III)

SHIRAKAMI APP 119.25 - 315.3 - 120.65	ILS-LOC 111.9 IMR ILS-GP 331.1 ILS-DME CH-56X	AOMORI TOWER 118.3 - 126.2	RADAR AVBL
--	--	-------------------------------	------------



DME to IMR	0.2	0.3	0.7	6.4	8.7
NM to THR	0	0.1	0.5	6.2	8.5

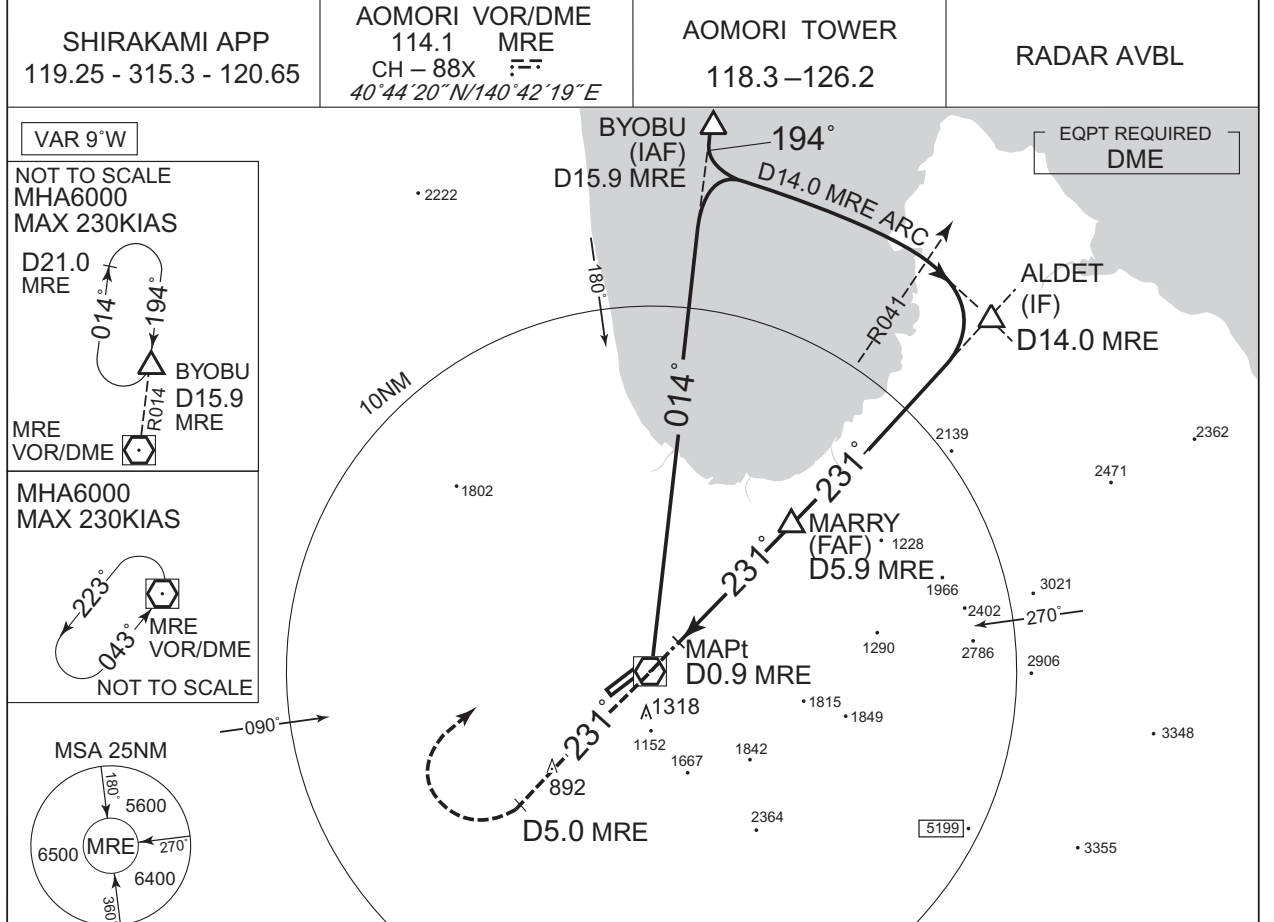
Missed APCH climb gradient MNM 4.0%										
MINIMA										
THR elev. 664										
AD elev. 650										
CAT	CAT III		CAT II		CAT I		LOC		CIRCLING	
	RVR	DA(DH)	RA	RVR	DA(H)	RVR/CMV	MDA(H)	RVR/CMV	MDA(H)	VIS
A							990 (340)	900		
B	100	764 (100)	92	300	864 (200)	550	1010 (360)	1000	1220 (570)	1600
C							1030 (380)			
D							1050 (400)			

MINIMA with Missed APCH climb gradient of 2.5% are not established.  
Circling to NORTH side of RWY only.

CHANGE : ATC call sign and FREQ. Description of RADAR Service. Missed APCH PROC.

INSTRUMENT APPROACH CHART

RJSA / AOMORI VOR RWY24



CHANGE : ATC call sign and FREQ. Description of RADAR Service. Missed APCH PROC.

MARRY(FAF) : 404842.24N /1404733.47E

**MISSED APPROACH**

Climb to 6000FT via MRE  
R231 to MRE 5.0DME, turn right, direct to MRE VOR/DME and hold.  
Contact SHIRAKAMI APP.

DME to MRE	0	0.9	5.9	9.2	14.0
NM to THR	0	0.9	5.9	9.2	14.0

Timing not authorized for defining the MAPt.

Missed APCH climb gradient MNM 5.0%

MINIMA		THR elev. 664	AD elev. 650
CAT	CIRCLING		
	MDA(H)	RVR/CMV	MDA(H) VIS
A	990 (340)	900	1220 (570) 1600
B	1030 (380)	1000	
C	1070 (420)	1600	2400
D	1110 (460)	1600	3200

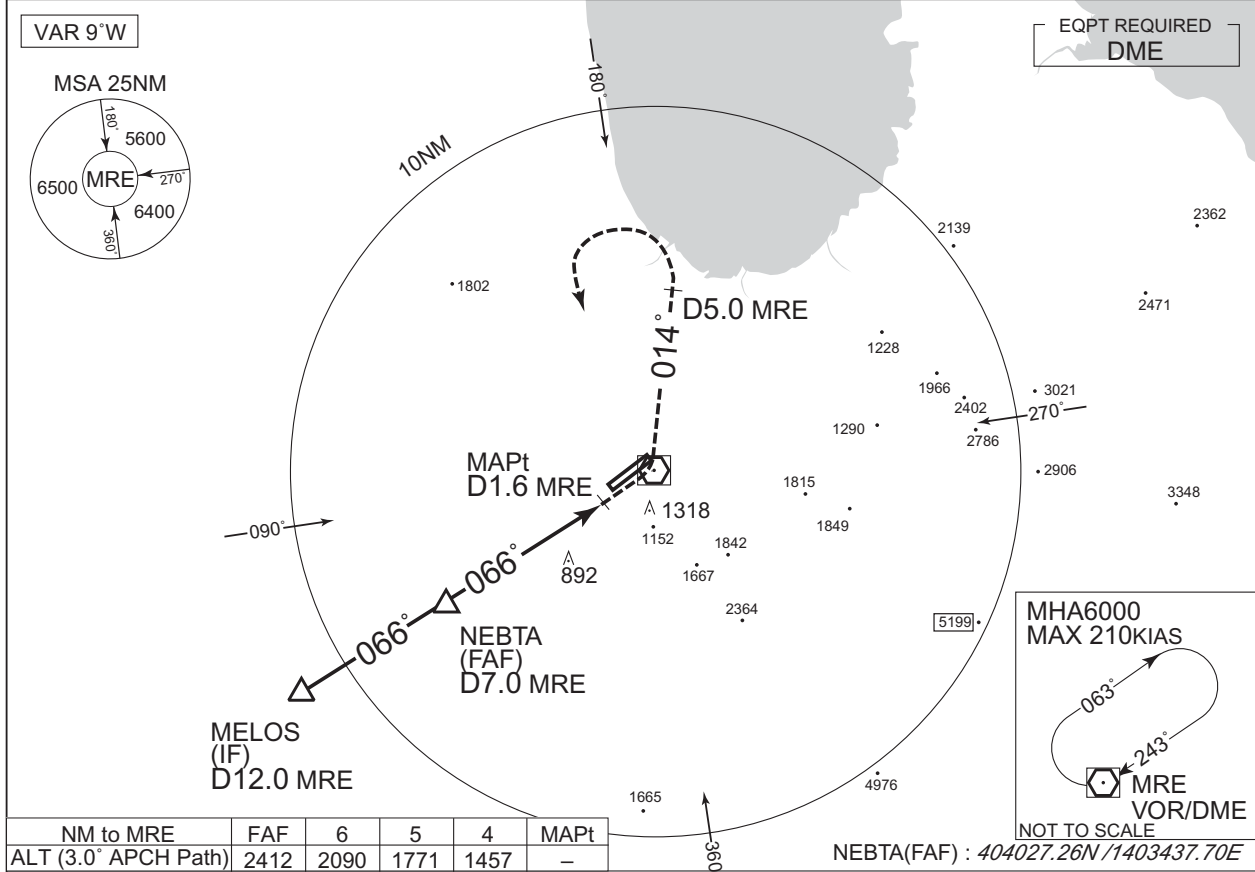
MINIMA with Missed APCH climb gradient of 2.5% are not established.  
Circling to NORTH side of RWY only.

INSTRUMENT APPROACH CHART

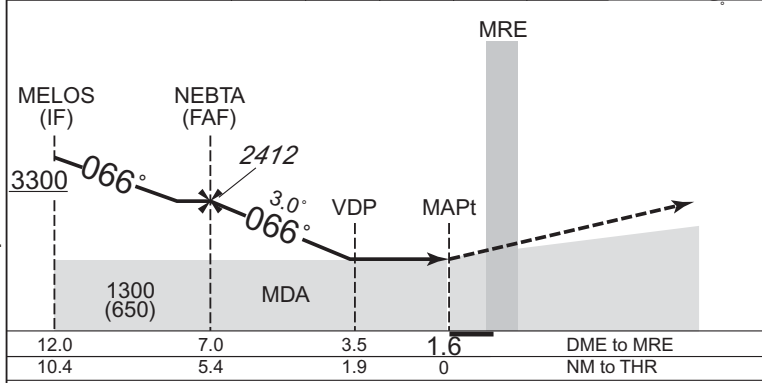
RJSA / AOMORI

VOR Z RWY06

SHIRAKAMI APP 119.25 - 315.3 - 120.65	AOMORI VOR/DME 114.1 MRE CH - 88X 40°44'20"N/140°42'19"E	AOMORI TOWER 118.3 - 126.2	RADAR AVBL
--	---	-------------------------------	------------



NM to MRE	FAF	6	5	4	MAPt
ALT (3.0° APCH Path)	2412	2090	1771	1457	-



**MISSED APPROACH**  
Turn left, climb to 6000FT via MRE R014 to MRE 5.0DME, turn left, direct to MRE VOR/DME and hold. Contact SHIRAKAMI APP.

Timing not authorized for defining the MAPt.

MINIMA		THR elev. 647	AD elev. 650
CAT	MDA(H)		CIRCLING
	RVR/CMV	MDA(H)	VIS
A	1300 (650)	1500	1600
B			
C		1800	2400
D			
Circling to NORTH side of RWY only.			

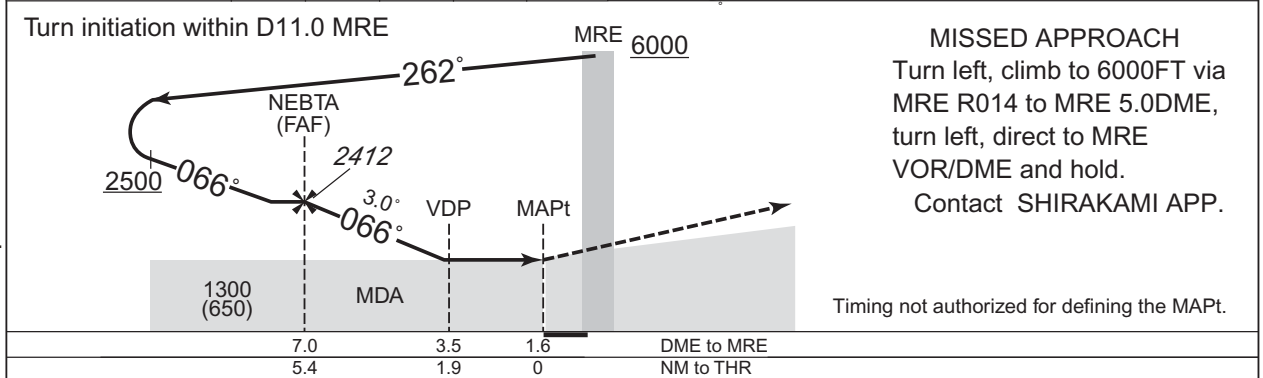
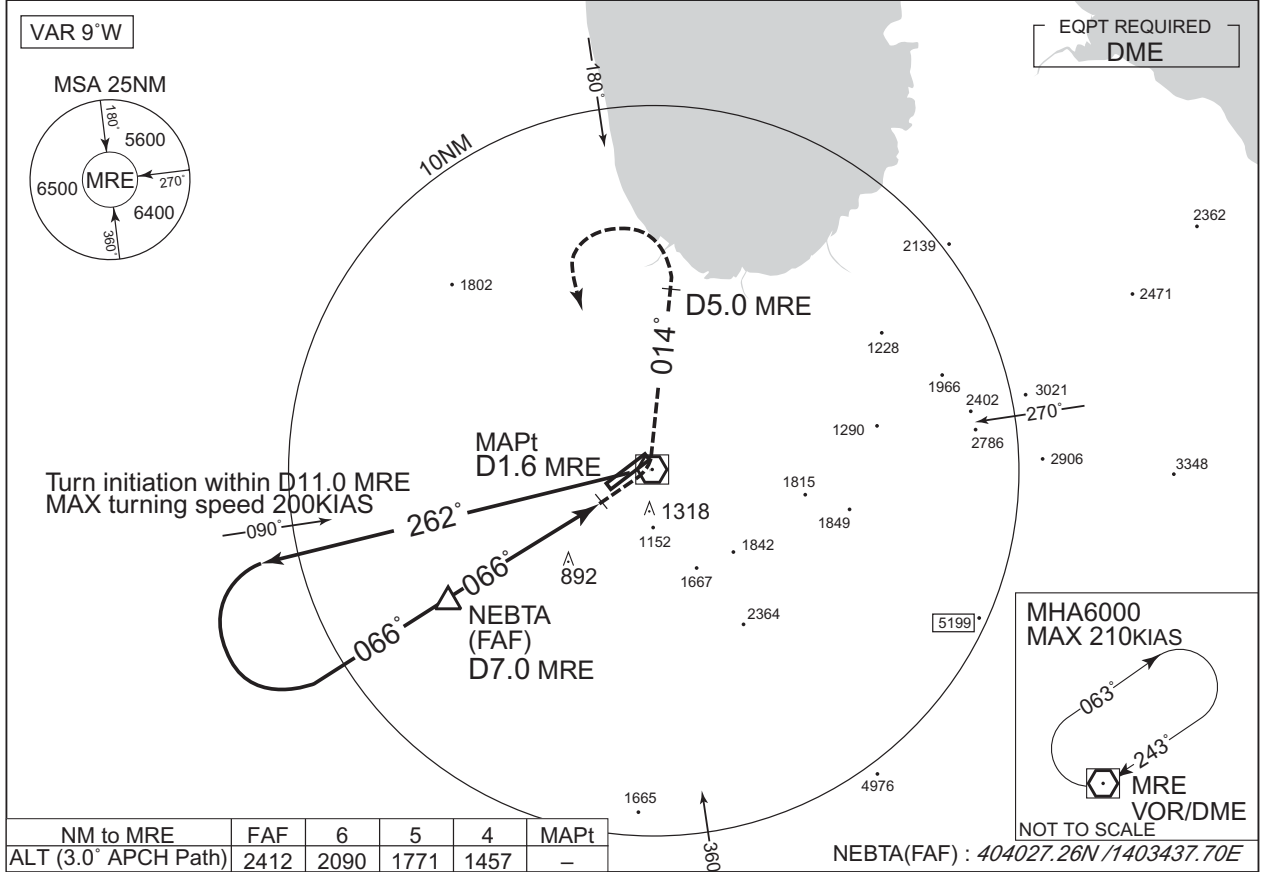
CHANGE : ATC call sign and FREQ. Description of RADAR Service. Missed APCH PROC.

INSTRUMENT APPROACH CHART

RJSA / AOMORI

VOR Y RWY06

SHIRAKAMI APP 119.25 - 315.3 - 120.65	AOMORI VOR/DME 114.1 MRE CH - 88X 40°44'20"N/140°42'19"E	AOMORI TOWER 118.3 - 126.2	RADAR AVBL
--	---	-------------------------------	------------



MINIMA		THR elev. 647	AD elev. 650	
CAT			CIRCLING	
	MDA(H)	RVR/CMV	MDA(H)	VIS
A	1300 (650)	1500	1300 (650)	1600
B				2400
C				2400
D				3200

Circling to NORTH side of RWY only.

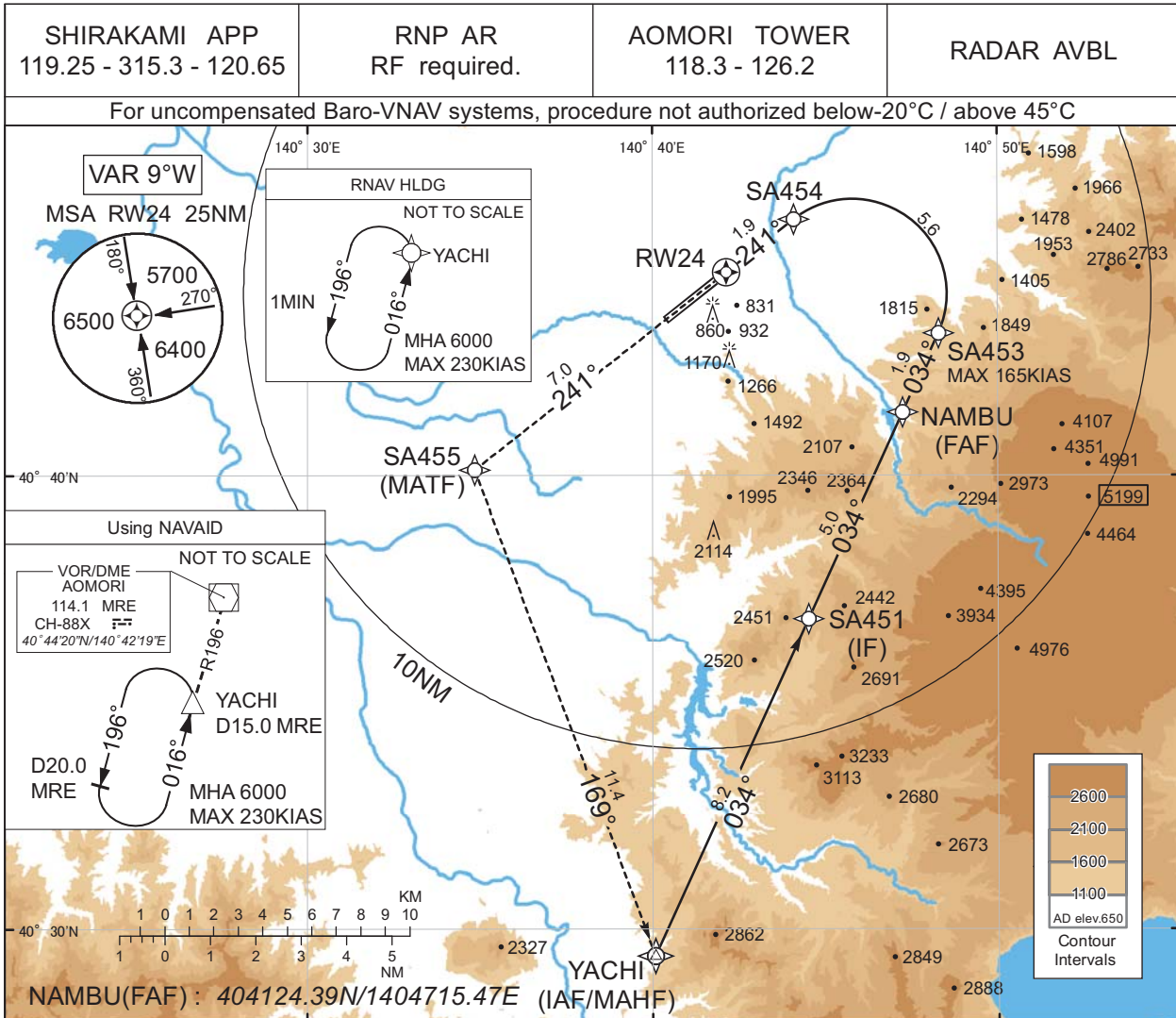
CHANGE : ATC call sign and FREQ. Description of RADAR Service. Missed APCH PROC.



INSTRUMENT APPROACH CHART

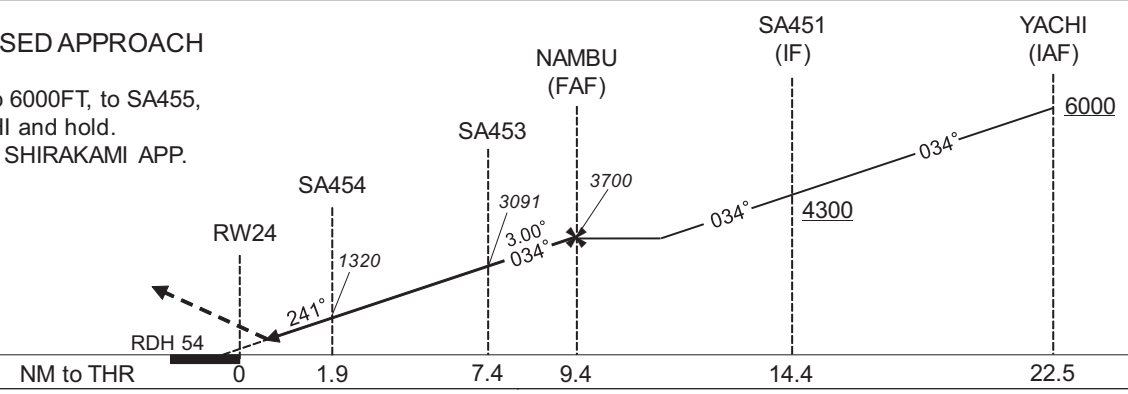
RJSA / AOMORI

RNP Z RWY24(AR)



MISSED APPROACH

Climb to 6000FT, to SA455, to YACHI and hold.  
Contact SHIRAKAMI APP.



Missed APCH climb gradient MNM 5.0%

CAT	THR elev. 664		AD elev. 650	
	RNP 0.10		RNP 0.30	
	DA(H)	RVR/CMV	DA(H)	RVR/CMV
A	-	-	-	-
B	-	-	-	-
C	984(320)	1000	1063(399)	1000
D	994(330)	1400	1073(409)	1400

MINIMA with Missed APCH climb gradient of 2.5% are not established.

**Authorization Required**

CHANGE : ATC call sign and FREQ. Description of RADAR Service. Missed APCH PROC.

INSTRUMENT APPROACH CHART

RJSA / AOMORI

RNP Z RWY24(AR)

Coding Table

Serial Number	Path Descriptor	Waypoint Identifier	Fly Over	Course °M(°T)	Magnetic Variation	Distance (NM)	Turn Direction	Altitude (FT)	Speed (KIAS)	VPA/ RDH (°/FT)	RNP Value
001	IF	YACHI	-	-	-9.3	-	-	+6000	-	-	-
002	TF	SA451	-	034 (024.4)	-9.3	8.2	-	+4300	-	-	1.0
003	TF	NAMBU	-	034 (024.5)	-9.3	5.0	-	3700	-	-	1.0
004	TF	SA453	-	034 (024.5)	-9.3	1.9	-	3091	-165	-3.00	0.10 0.30
005	RF Center: SARF1 r=2.09NM	SA454	-	-	-9.3	5.6	L	1320	-	-3.00	0.10 0.30
006	TF	RW24	Y	241 (231.8)	-9.3	1.9	-	718	-	-3.00/54	0.10 0.30
007	TF	SA455	-	241 (231.8)	-9.3	7.0	-	-	-	-	1.0
008	TF	YACHI	-	169 (159.7)	-9.3	11.4	-	6000	-	-	1.0

Path	Waypoint Identifier	Inbound Course °M(°T)	Magnetic Variation	Outbound Time (MIN)	Turn Direction	Minimum Altitude (FT)	Maximum Altitude (FT)	Speed (KIAS)	RNP Value
Hold	YACHI	016 (006.5)	-9.3	1.0 (-14000)	L	6000	FL140	-230 (-14000)	1.0

Waypoint Coordinates

Waypoint Identifier	Coordinates	RF Arc Center Identifier	Coordinates
YACHI	402925.44N / 1404004.97E	SARF1	404400.99N / 1404548.34E
SA451	403651.24N / 1404431.58E		
NAMBU	404124.39N / 1404715.47E		
SA453	404308.85N / 1404818.25E		
SA454	404539.74N / 1404406.71E		
RW24	404429.79N / 1404209.27E		
SA455	404008.45N / 1403451.64E		

CHANGE : PROC course. VAR. RNAV HLDG established(YACHI).

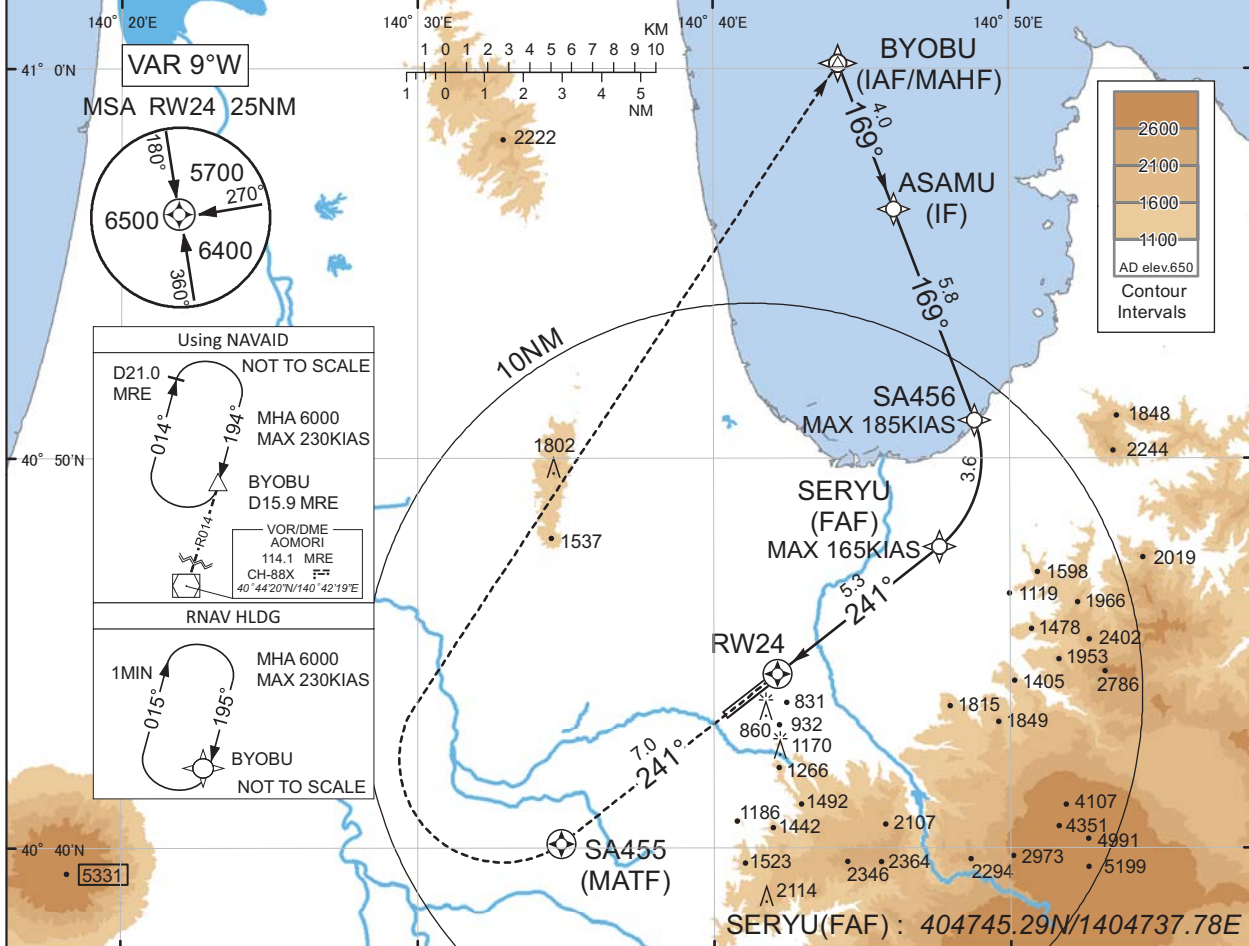
INSTRUMENT APPROACH CHART

RJSA / AOMORI

RNP Y RWY24(AR)

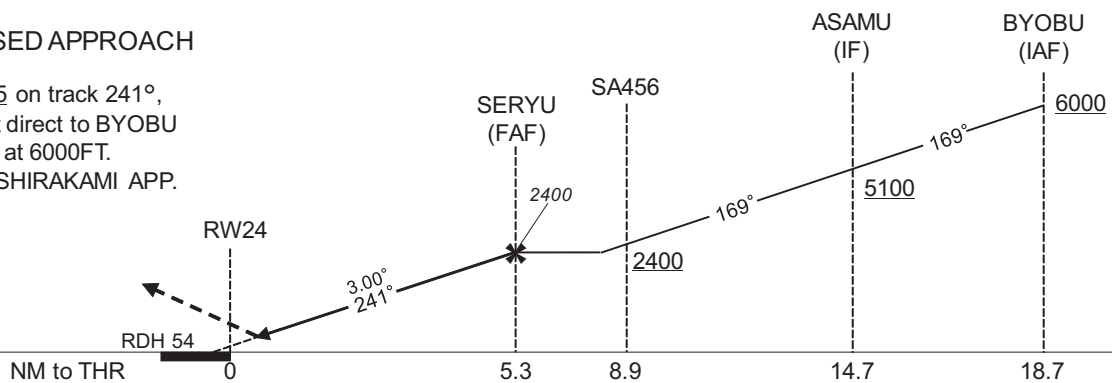
SHIRAKAMI APP 119.25 - 315.3 - 120.65	RNP AR RF required.	AOMORI TOWER 118.3 - 126.2	RADAR AVBL
--	------------------------	-------------------------------	------------

For uncompensated Baro-VNAV systems, procedure not authorized below -20°C / above 45°C



MISSED APPROACH

To SA455 on track 241°, turn right direct to BYOBU and hold at 6000FT. Contact SHIRAKAMI APP.



Missed APCH climb gradient MNM 5.0%

MINIMA	THR elev. 664		AD elev. 650	
CAT	RNP 0.10		RNP 0.30	
	DA(H)	RVR/CMV	DA(H)	RVR/CMV
A	-	-	-	-
B	-	-	-	-
C	984(320)	1000	1063(399)	1000
D	994(330)	1400	1073(409)	1400

MINIMA with Missed APCH climb gradient of 2.5% are not established.

**Authorization Required**

CHANGE : ATC call sign and FREQ. Description of RADAR Service. Missed APCH PROC.

INSTRUMENT APPROACH CHART

RJSA / AOMORI

RNP Y RWY24(AR)

Coding Table

Serial Number	Path Descriptor	Waypoint Identifier	Fly Over	Course °M(°T)	Magnetic Variation	Distance (NM)	Turn Direction	Altitude (FT)	Speed (KIAS)	VPA/ RDH (°/FT)	RNP Value
001	IF	BYOBU	-	-	-9.3	-	-	+6000	-	-	-
002	TF	ASAMU	-	169 (159.3)	-9.3	4.0	-	+5100	-	-	1.0
003	TF	SA456	-	169 (159.3)	-9.3	5.8	-	+2400	-185	-	0.3
004	RF Center: SARF3 r=2.83NM	SERYU	-	-	-9.3	3.6	R	2400	-165	-	0.3
005	TF	RW24	Y	241 (231.9)	-9.3	5.3	-	718	-	-3.00/54	0.10 0.30
006	CF	SA455	Y	241 (231.8)	-9.3	7.0	-	-	-	-	1.0
007	DF	BYOBU	-	-	-9.3	-	R	6000	-	-	1.0

Path	Waypoint Identifier	Inbound Course °M(°T)	Magnetic Variation	Outbound Time (MIN)	Turn Direction	Minimum Altitude (FT)	Maximum Altitude (FT)	Speed (KIAS)	RNP Value
Hold	BYOBU	195 (185.2)	-9.3	1.0 (-14000)	R	6000	FL140	-230 (-14000)	1.0

Waypoint Coordinates

Waypoint Identifier	Coordinates	RF Arc Center Identifier	Coordinates
BYOBU	410009.54N / 1404414.25E	SARF3	404959.39N / 1404519.70E
ASAMU	405624.95N / 1404606.79E		
SA456	405059.78N / 1404849.32E		
SERYU	404745.29N / 1404737.78E		
RW24	404429.79N / 1404209.27E		
SA455	404008.45N / 1403451.64E		

CHANGE : PROC course. VAR. RNAV HLDG established(BYOBU).

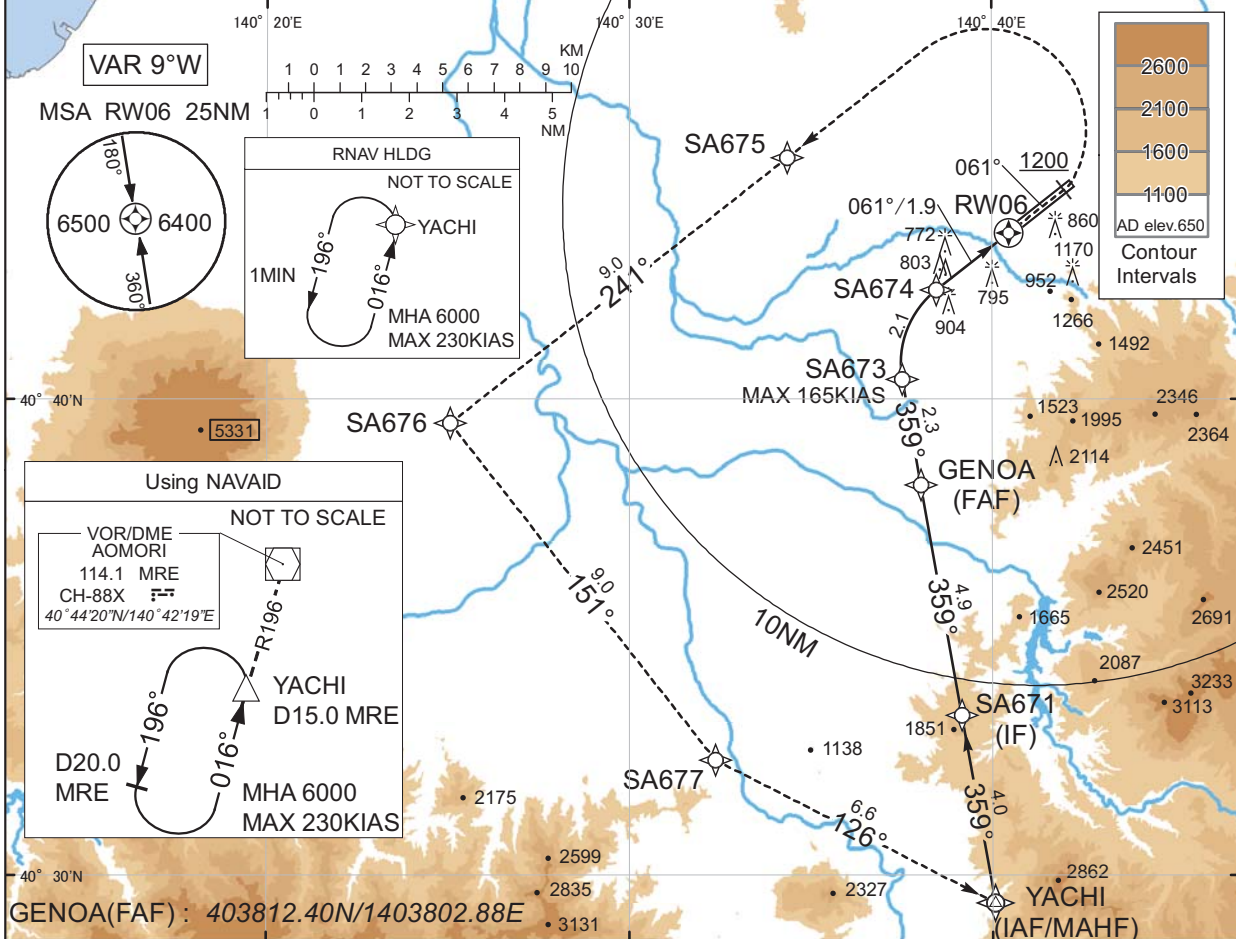
INSTRUMENT APPROACH CHART

RJSA / AOMORI

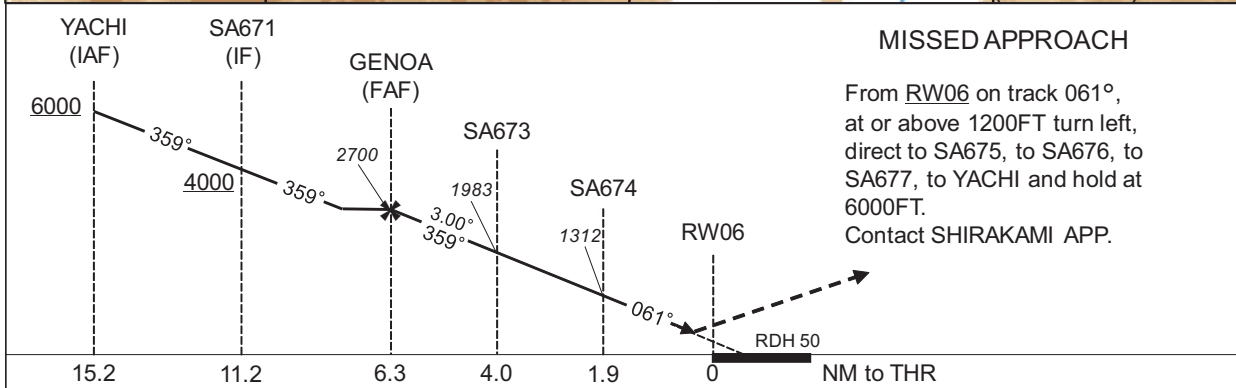
RNP Z RWY06(AR)

SHIRAKAMI APP 119.25 - 315.3 - 120.65	RNP AR RF required.	AOMORI TOWER 118.3 - 126.2	RADAR AVBL
--	------------------------	-------------------------------	------------

For uncompensated Baro-VNAV systems, procedure not authorized below -20°C / above 45°C



CHANGE : ATC call sign and FREQ. Description of RADAR Service. Missed APCH PROC.



**MISSED APPROACH**  
From RW06 on track 061°, at or above 1200FT turn left, direct to SA675, to SA676, to SA677, to YACHI and hold at 6000FT. Contact SHIRAKAMI APP.

Missed APCH climb gradient MNM 5.0%

CAT	RNP 0.10		RNP 0.30	
	DA(H)	RVR/CMV	DA(H)	RVR/CMV
A	-	-	-	-
B	-	-	-	-
C	1004(357)	1400	1039(392)	1400
D	1014(367)	1600	1049(402)	1600

MINIMA with Missed APCH climb gradient of 2.5% are not established.

**Authorization Required**

INSTRUMENT APPROACH CHART

RJSA / AOMORI

RNP Z RWY06(AR)

Coding Table

Serial Number	Path Descriptor	Waypoint Identifier	Fly Over	Course °M(°T)	Magnetic Variation	Distance (NM)	Turn Direction	Altitude (FT)	Speed (KIAS)	VPA/RDH (°/FT)	RNP Value
001	IF	YACHI	-	-	-9.3	-	-	+6000	-	-	-
002	TF	SA671	-	359 (350.0)	-9.3	4.0	-	+4000	-	-	1.0
003	TF	GENOA	-	359 (350.0)	-9.3	4.9	-	2700	-	-	1.0
004	TF	SA673	-	359 (350.0)	-9.3	2.3	-	1983	-165	-3.00	0.10 0.30
005	RF Center: SARF2 r=1.95NM	SA674	-	-	-9.3	2.1	R	1312	-	-3.00	0.10 0.30
006	TF	RW06	Y	061 (051.8)	-9.3	1.9	-	697	-	-3.00/50	0.10 0.30
007	FA	-	-	061 (051.8)	-9.3	-	-	+1200	-	-	1.0
008	DF	SA675	-	-	-9.3	-	L	-	-	-	1.0
009	TF	SA676	-	241 (231.7)	-9.3	9.0	-	-	-	-	1.0
010	TF	SA677	-	151 (141.8)	-9.3	9.0	-	-	-	-	1.0
011	TF	YACHI	-	126 (117.1)	-9.3	6.6	-	6000	-	-	1.0

Path	Waypoint Identifier	Inbound Course °M(°T)	Magnetic Variation	Outbound Time (MIN)	Turn Direction	Minimum Altitude (FT)	Maximum Altitude (FT)	Speed (KIAS)	RNP Value
Hold	YACHI	016 (006.5)	-9.3	1.0 (-14000)	L	6000	FL140	-230 (-14000)	1.0

Waypoint Coordinates

Waypoint Identifier	Coordinates	RF Arc Center Identifier	Coordinates
YACHI	402925.44N / 1404004.97E	SARF2	404045.88N / 1404003.56E
SA671	403322.04N / 1403910.22E		
GENOA	403812.40N / 1403802.88E		
SA673	404025.48N / 1403731.96E		
SA674	404218.09N / 1403828.52E		
RW06	404329.77N / 1404028.61E		
SA675	404504.89N / 1403421.94E		
SA676	403930.44N / 1402503.91E		
SA677	403225.82N / 1403222.79E		

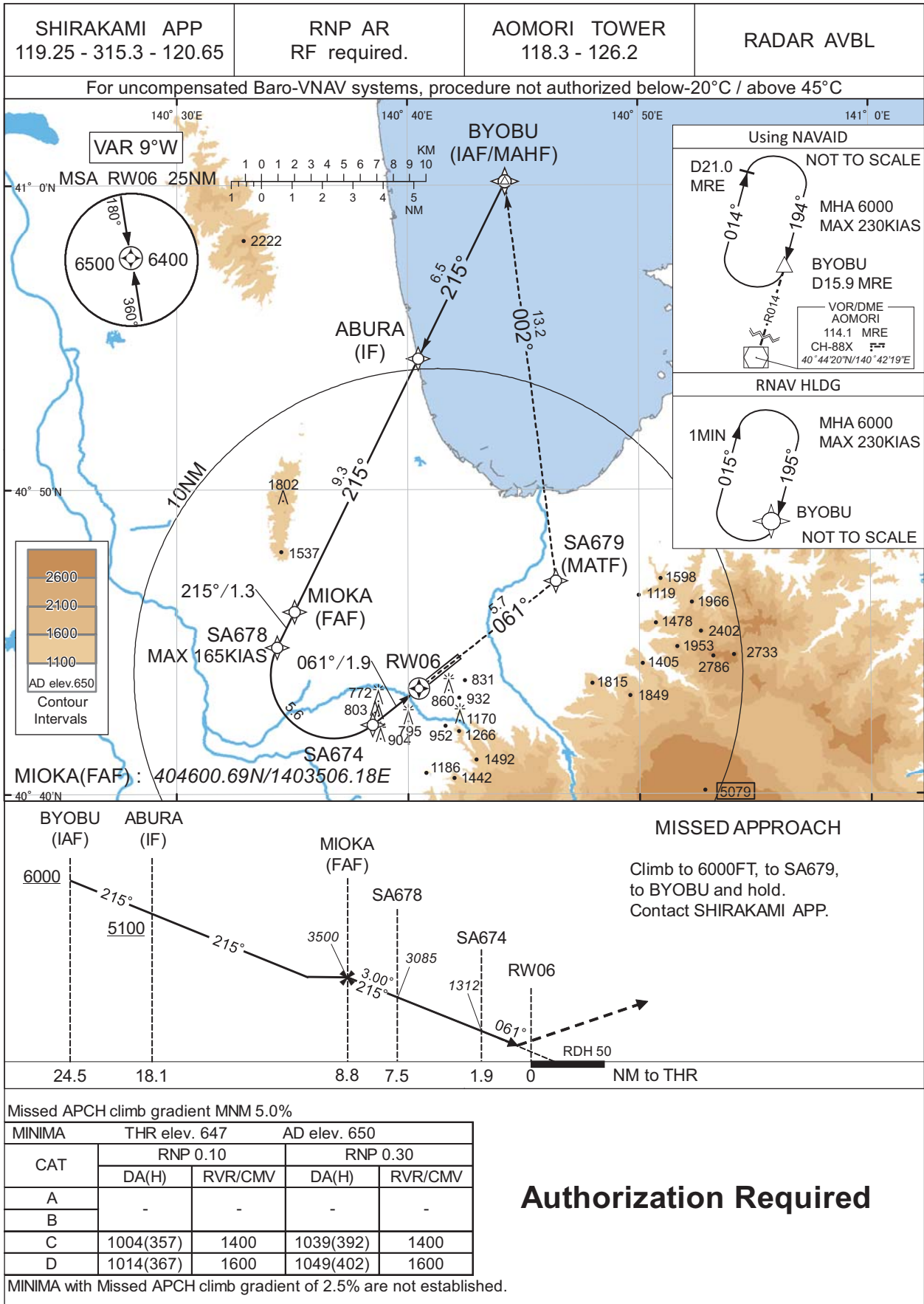
CHANGE : VAR. RNAV HLDG established(YACHI).



INSTRUMENT APPROACH CHART

RJSA / AOMORI

RNP Y RWY06(AR)



CHANGE : ATC call sign and FREQ. Description of RADAR Service. Missed APCH PROC.

INSTRUMENT APPROACH CHART

RJSA / AOMORI

RNP Y RWY06(AR)

Coding Table

Serial Number	Path Descriptor	Waypoint Identifier	Fly Over	Course °M(°T)	Magnetic Variation	Distance (NM)	Turn Direction	Altitude (FT)	Speed (KIAS)	VPA/ RDH (°/FT)	RNP Value
001	IF	BYOBU	-	-	-9.3	-	-	+6000	-	-	-
002	TF	ABURA	-	215 (206.1)	-9.3	6.5	-	+5100	-	-	1.0
003	TF	MIOKA	-	215 (206.0)	-9.3	9.3	-	3500	-	-	1.0
004	TF	SA678	-	215 (206.0)	-9.3	1.3	-	3085	-165	-3.00	0.10 0.30
005	RF Center: SARF4 r=2.07NM	SA674	-	-	-9.3	5.6	L	1312	-	-3.00	0.10 0.30
006	TF	RW06	Y	061 (051.8)	-9.3	1.9	-	697	-	-3.00/50	0.10 0.30
007	TF	SA679	-	061 (051.8)	-9.3	5.7	-	-	-	-	1.0
008	TF	BYOBU	-	002 (352.9)	-9.3	13.2	-	6000	-	-	1.0

Path	Waypoint Identifier	Inbound Course °M(°T)	Magnetic Variation	Outbound Time (MIN)	Turn Direction	Minimum Altitude (FT)	Maximum Altitude (FT)	Speed (KIAS)	RNP Value
Hold	BYOBU	195 (185.2)	-9.3	1.0 (-14000)	R	6000	FL140	-230 (-14000)	1.0

Waypoint Coordinates

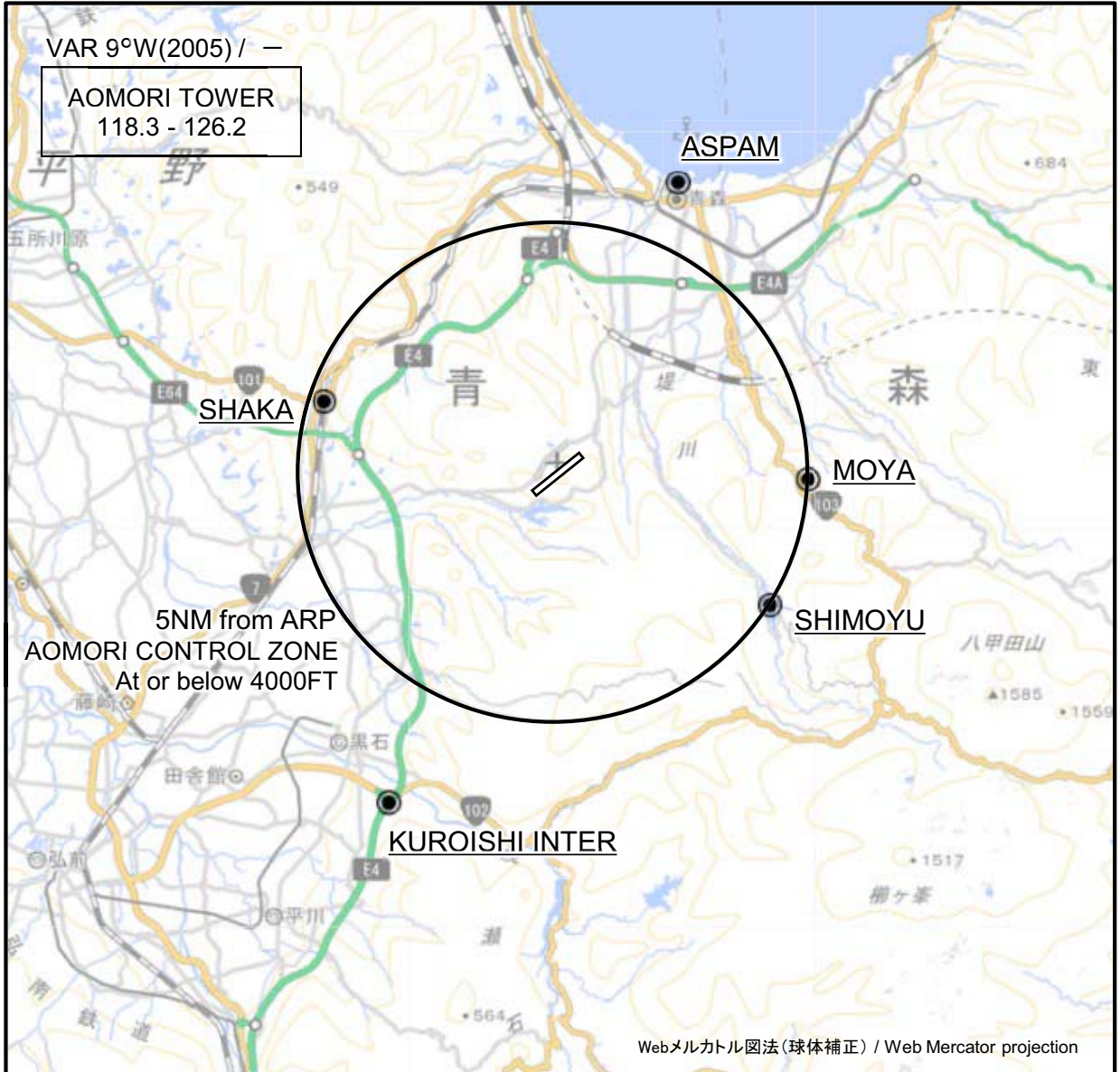
Waypoint Identifier	Coordinates	RF Arc Center Identifier	Coordinates
BYOBU	410009.54N / 1404414.25E	SARF4	404355.81N / 1403647.71E
ABURA	405419.99N / 1404028.03E		
MIOKA	404600.69N / 1403506.18E		
SA678	404450.39N / 1403420.99E		
SA674	404218.09N / 1403828.52E		
RW06	404329.77N / 1404028.61E		
SA679	404701.68N / 1404624.34E		

CHANGE : VAR. RNAV HLDG established(BYOBU).



RJSA / AOMORI

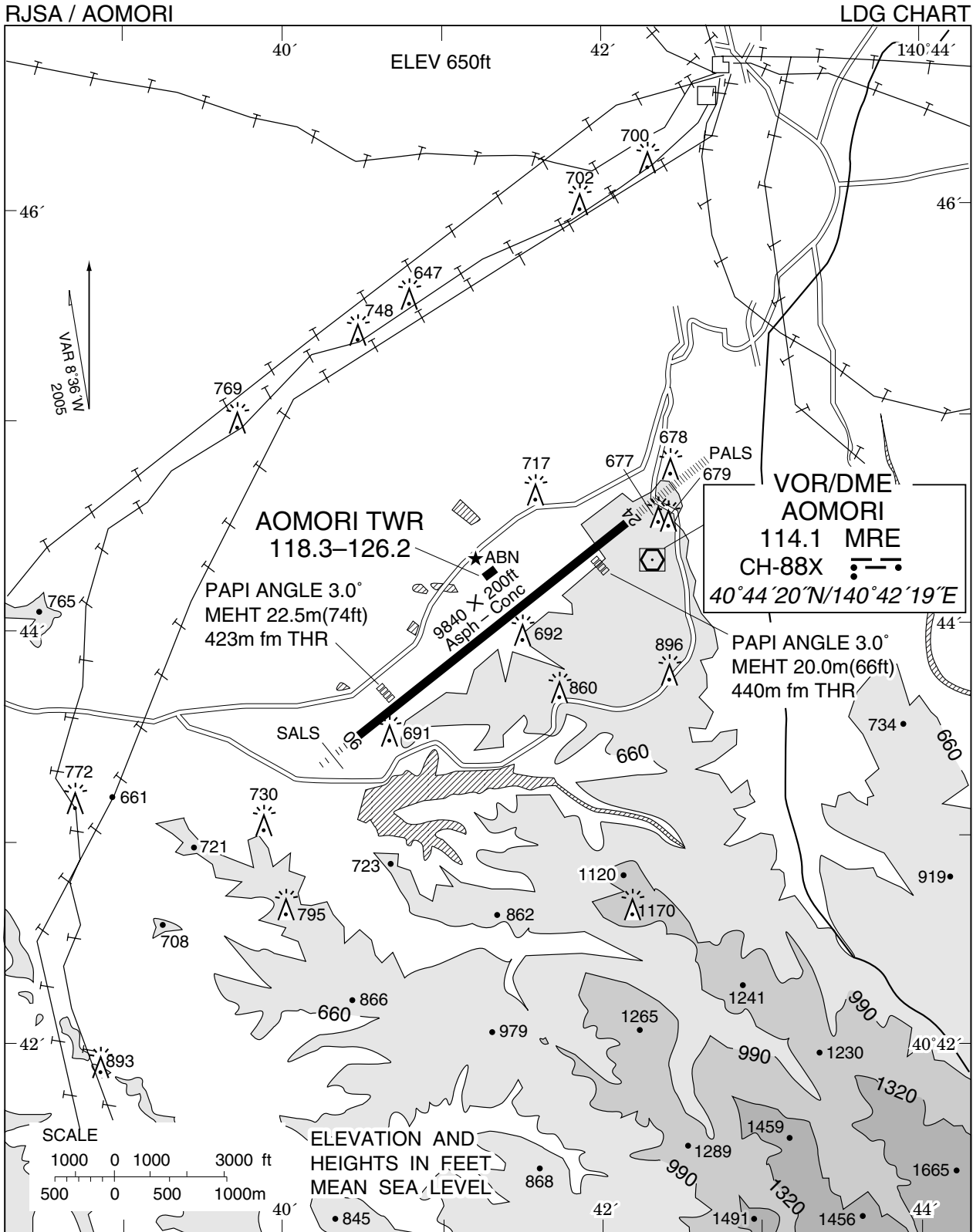
Visual REP



CHANGE : Map updated. BRG/DIST from ARP.

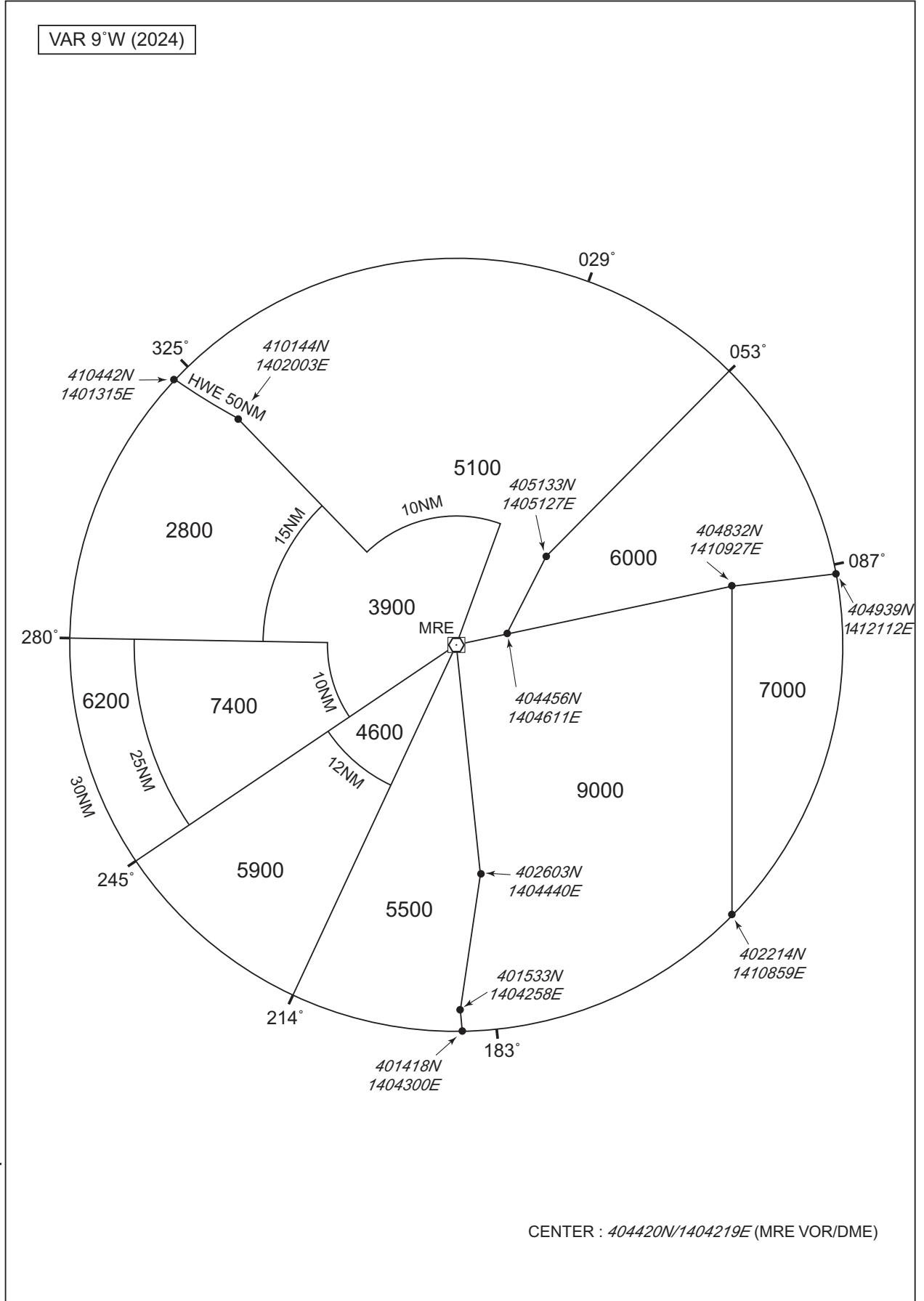
※図中に標高を示す数字がある場合、単位はメートル(m)である。The unit of measurement used to express elevation is meter(m).

Call sign	BRG / DIST from ARP	Remarks
アスパム Aspam	022°T / 6.3NM	アスパム, 三角形のビル ASPAM, Triangular
釈迦 Shaka	287°T / 4.8NM	JR大釈迦駅 JR Station
雲谷 Moya	092°T / 5.0NM	雲谷スキー場 Moya Slope
下湯 Shimoyu	123°T / 5.0NM	下湯平成湖 Lake
黒石インター Kuroishi Inter	206°T / 7.4NM	東北自動車道黒石インター Intersection



RJSA / AOMORI

Minimum Vectoring Altitude CHART



CHANGE : Update.