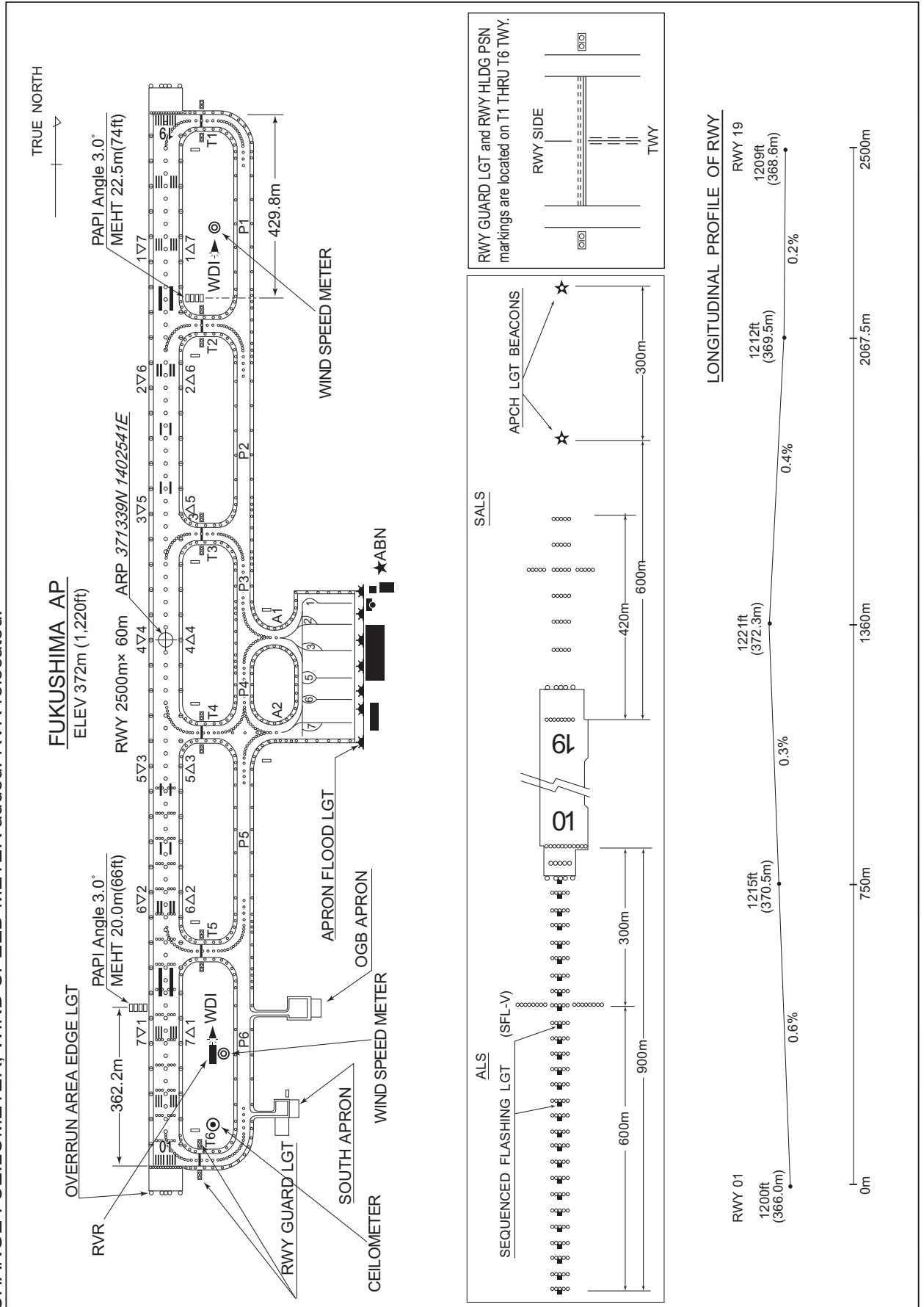


RJSF / FUKUSHIMA

AD CHART

CHANGE : CEILOMETER, WIND SPEED METER added. RVR relocated.



STANDARD DEPARTURE CHART-INSTRUMENT

RJSF / FUKUSHIMA

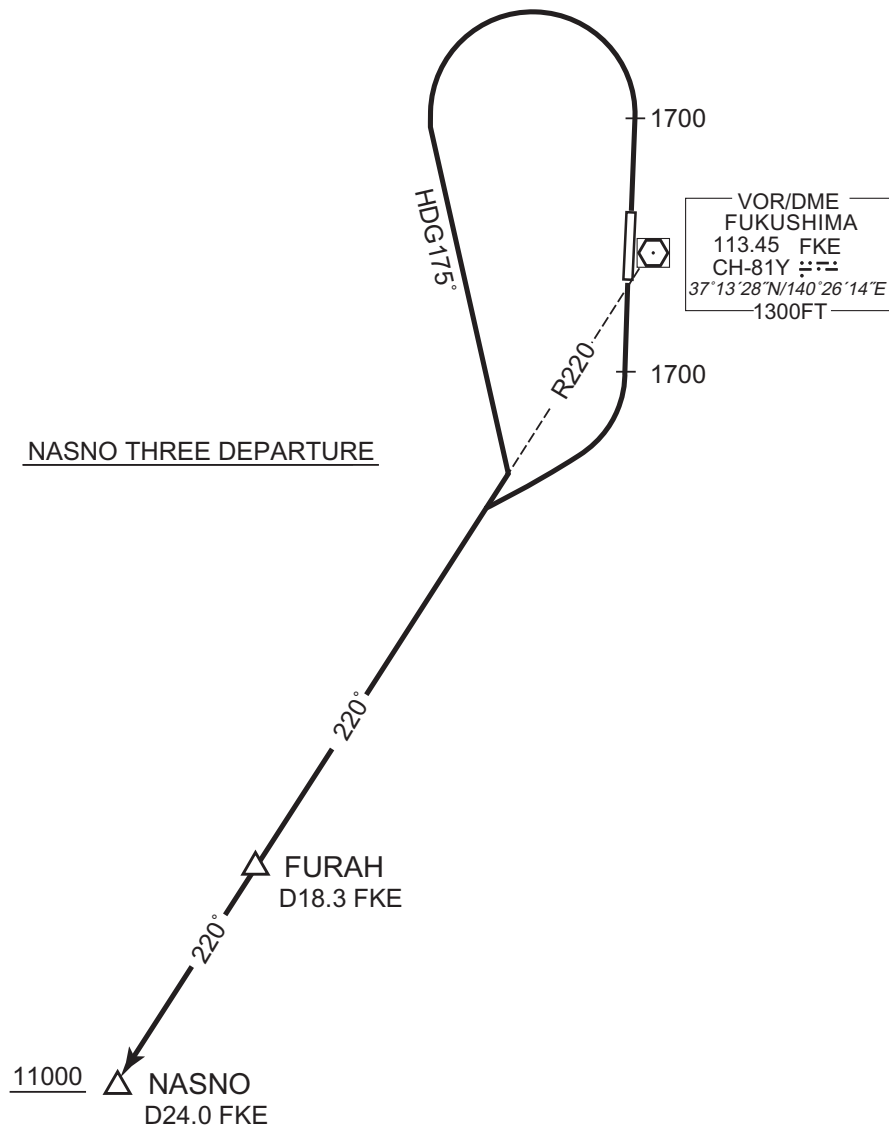
SID

NASNO THREE DEPARTURE

RWY01 : Climb RWY HDG to 1700FT, turn left HDG175°...

RWY19 : Climb RWY HDG to 1700FT, turn right...

...to intercept and proceed via FKE R220 to NASNO via FURAH.
Cross NASNO at or above 11000FT.



CHANGE : PROC renamed. PROC course.

STANDARD DEPARTURE CHART-INSTRUMENT

RJSF / FUKUSHIMA

SID

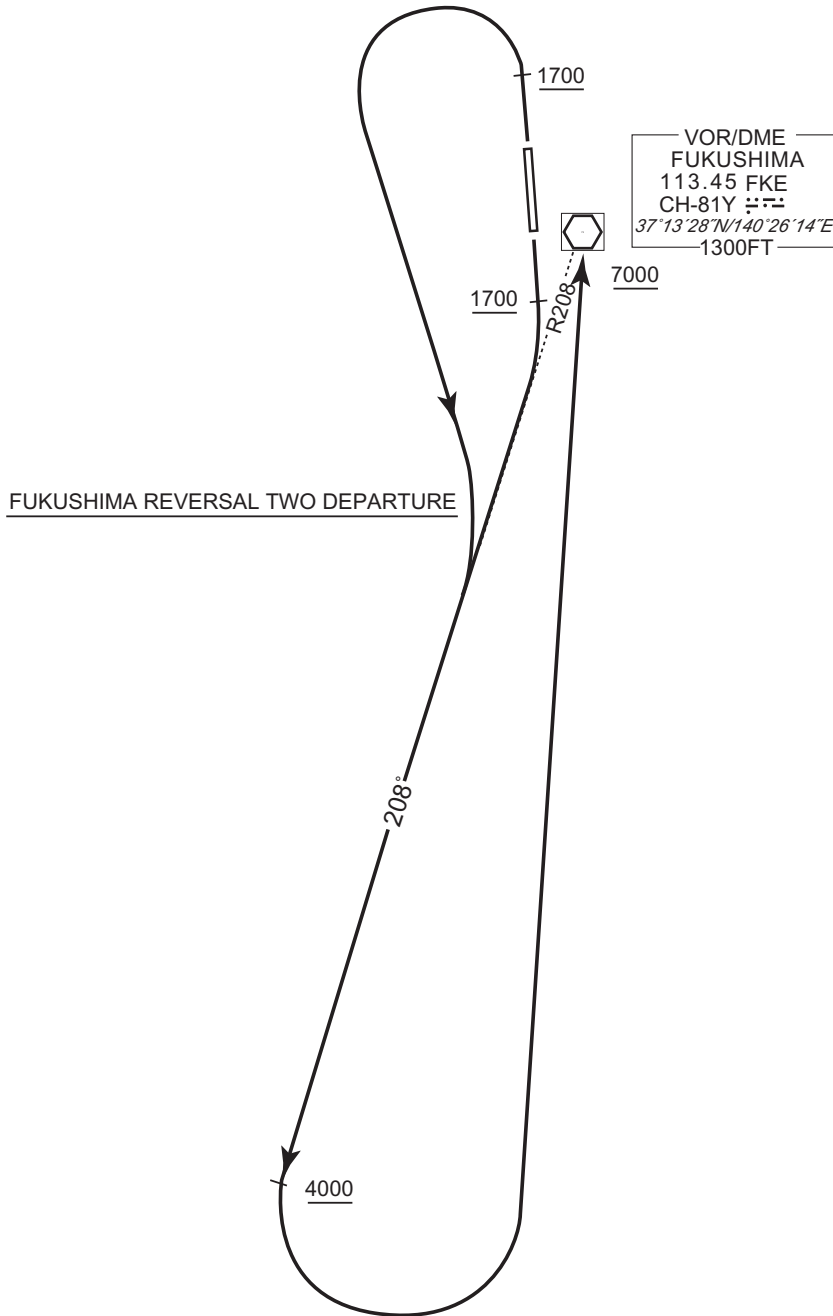
FUKUSHIMA REVERSAL TWO DEPARTURE

RWY 01 : Climb RWY HDG to 1700FT, turn left, ...

RWY 19 : Climb RWY HDG to 1700FT, turn right, ...

... via FKE R208 to 4000FT, turn left, direct to FKE VOR/DME.

Cross FKE VOR/DME at or above 7000FT.



CHANGE : PROC renamed. Radial FM FKE.

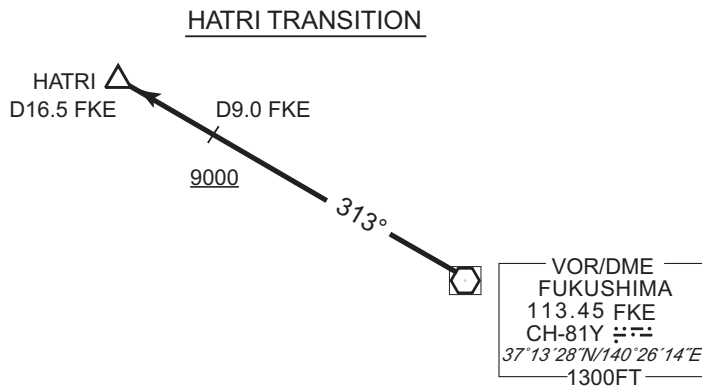
STANDARD DEPARTURE CHART-INSTRUMENT

RJSF / FUKUSHIMA

TRANSITION

HATRI TRANSITION

From over FKE VOR/DME, climb via FKE R313 to HATRI. Cross FKE R313/9.0DME at or above 9000FT.



CHANGE : DME FM FKE added(HATRI).

STANDARD DEPARTURE CHART-INSTRUMENT

RJSF / FUKUSHIMA

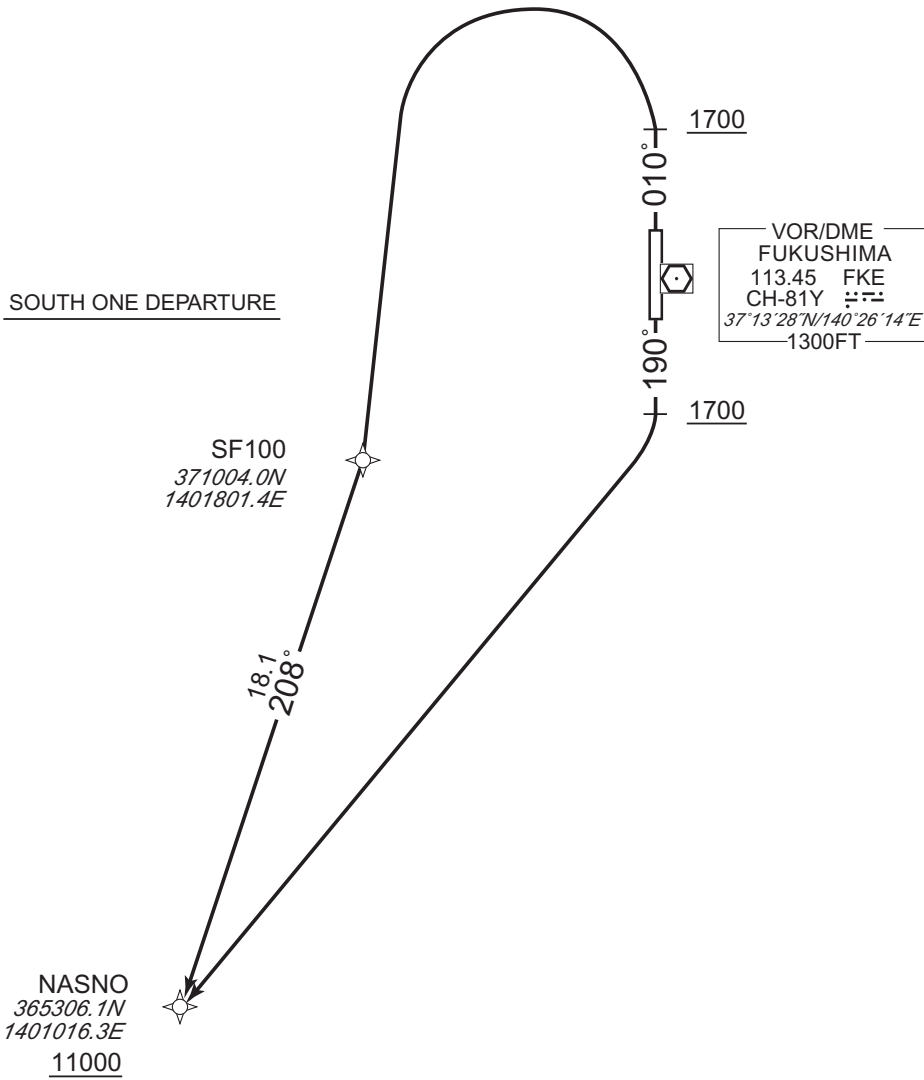
RNAV SID

SOUTH ONE DEPARTURE

RNP1

Note GNSS required.

VAR 8°W (2016)



SOUTH ONE DEPARTURE

RWY01 : Climb on HDG010° at or above 1700FT, turn left direct to SF100, to NASNO at or above 11000FT.

RWY19 : Climb on HDG190° at or above 1700FT, turn right direct to NASNO at or above 11000FT.

CHANGE : Navigation Specification(Basic RNP1 → RNP1).

STANDARD DEPARTURE CHART-INSTRUMENT

RJSF / FUKUSHIMA

RNAV SID

SOUTH ONE DEPARTURE

RWY01

Serial Number	Path Descriptor	Waypoint Identifier	Fly Over	Course °M(°T)	Magnetic Variation	Distance (NM)	Turn Direction	Altitude (FT)	Speed (KIAS)	Vertical Angle	Navigation Specification
001	VA	-	-	010 (002.2)	-7.8	-	-	+1700	-	-	RNP1
002	DF	SF100	-	-	-7.8	-	L	-	-	-	RNP1
003	TF	NASNO	-	208 (200.1)	-7.8	18.1	-	+11000	-	-	RNP1

RWY19

Serial Number	Path Descriptor	Waypoint Identifier	Fly Over	Course °M(°T)	Magnetic Variation	Distance (NM)	Turn Direction	Altitude (FT)	Speed (KIAS)	Vertical Angle	Navigation Specification
001	VA	-	-	190 (182.2)	-7.8	-	-	+1700	-	-	RNP1
002	DF	NASNO	-	-	-7.8	-	R	+11000	-	-	RNP1

CHANGE : Navigation Specification(Basic RNP1 → RNP1).

STANDARD DEPARTURE CHART-INSTRUMENT

RJSF / FUKUSHIMA

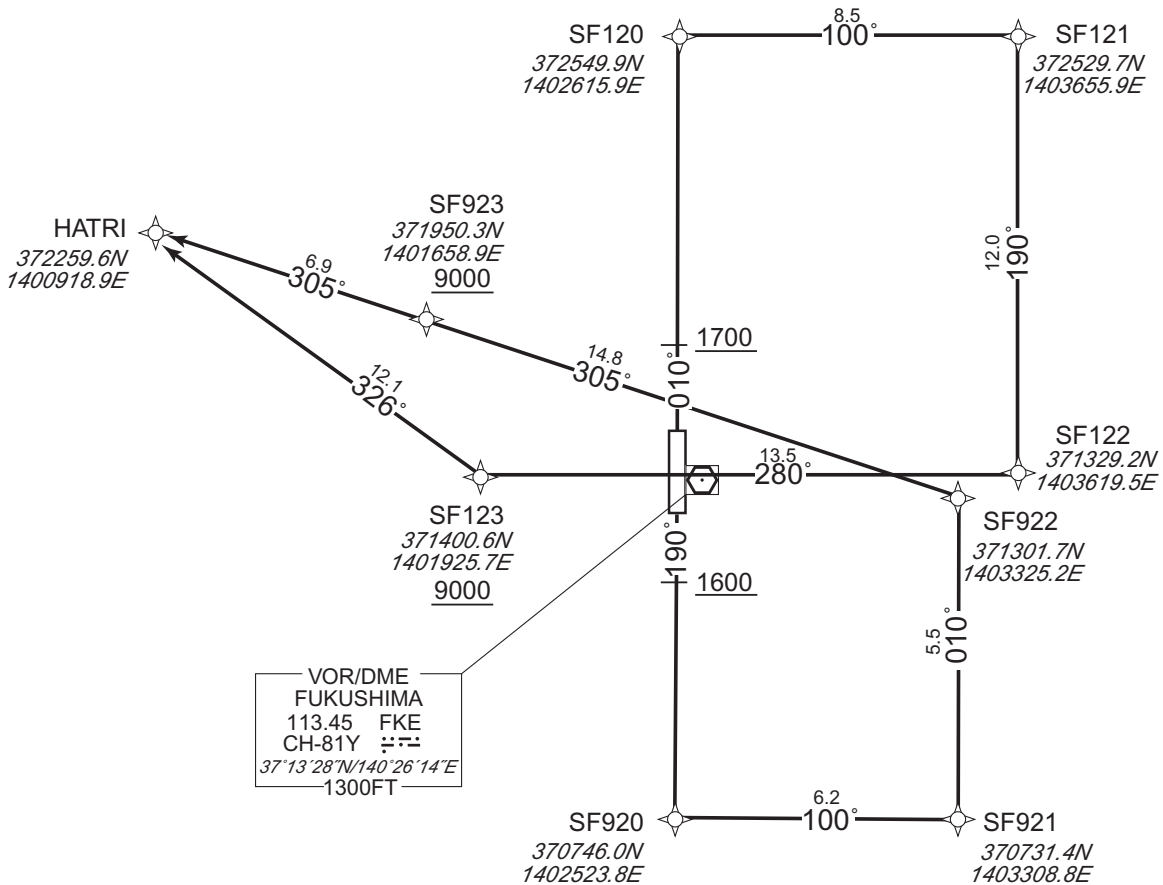
RNAV SID

WEST ONE DEPARTURE	RNP1
--------------------	------

Note GNSS required.

VAR 8°W (2016)

WEST ONE DEPARTURE



WEST ONE DEPARTURE

RWY01 : Climb on HDG010° at or above 1700FT, direct to SF120, to SF121, to SF122, to SF123 at or above 9000FT, to HATRI.

RWY19 : Climb on HDG190° at or above 1600FT, direct to SF920, to SF921, to SF922, to SF923 at or above 9000FT, to HATRI.

Note RWY19 : 3.9% climb gradient required up to 2800FT.

OBST ALT 2577FT located at 7.1NM 144° FM end of RWY19.

CHANGE : Navigation Specification(Basic RNP1 → RNP1).

STANDARD DEPARTURE CHART-INSTRUMENT

RJSF / FUKUSHIMA

RNAV SID

WEST ONE DEPARTURE

RWY01

Serial Number	Path Descriptor	Waypoint Identifier	Fly Over	Course °M(°T)	Magnetic Variation	Distance (NM)	Turn Direction	Altitude (FT)	Speed (KIAS)	Vertical Angle	Navigation Specification
001	VA	-	-	010 (002.2)	-7.8	-	-	+1700	-	-	RNP1
002	DF	SF120	-	-	-7.8	-	-	-	-	-	RNP1
003	TF	SF121	-	100 (092.2)	-7.8	8.5	-	-	-	-	RNP1
004	TF	SF122	-	190 (182.3)	-7.8	12.0	-	-	-	-	RNP1
005	TF	SF123	-	280 (272.3)	-7.8	13.5	-	+9000	-	-	RNP1
006	TF	HATRI	-	326 (318.2)	-7.8	12.1	-	-	-	-	RNP1

RWY19

Serial Number	Path Descriptor	Waypoint Identifier	Fly Over	Course °M(°T)	Magnetic Variation	Distance (NM)	Turn Direction	Altitude (FT)	Speed (KIAS)	Vertical Angle	Navigation Specification
001	VA	-	-	190 (182.2)	-7.8	-	-	+1600	-	-	RNP1
002	DF	SF920	-	-	-7.8	-	-	-	-	-	RNP1
003	TF	SF921	-	100 (092.2)	-7.8	6.2	-	-	-	-	RNP1
004	TF	SF922	-	010 (002.3)	-7.8	5.5	-	-	-	-	RNP1
005	TF	SF923	-	305 (297.6)	-7.8	14.8	-	+9000	-	-	RNP1
006	TF	HATRI	-	305 (297.4)	-7.8	6.9	-	-	-	-	RNP1

CHANGE : Navigation Specification(Basic RNP1 → RNP1).

STANDARD ARRIVAL CHART-INSTRUMENT

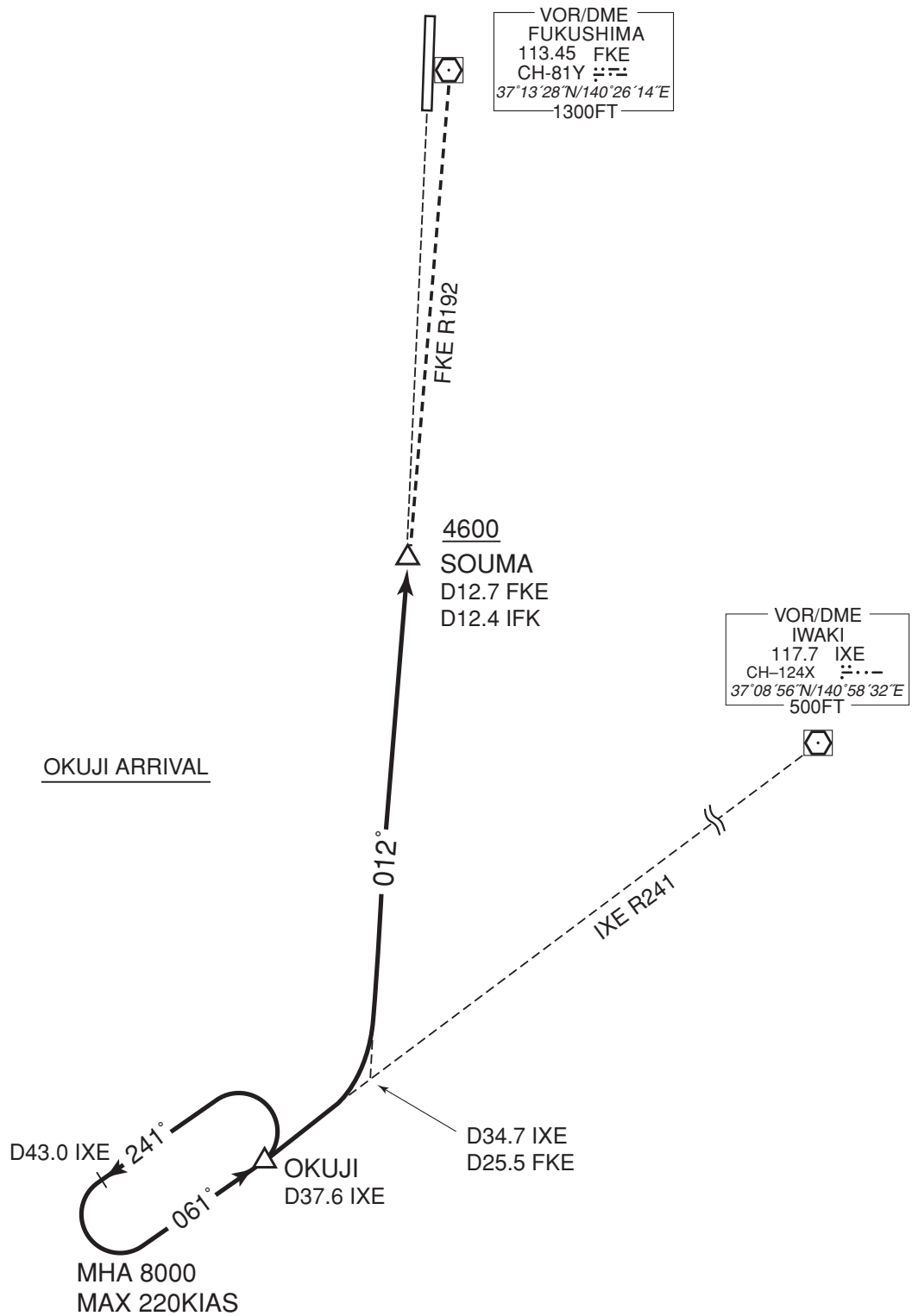
RJSF / FUKUSHIMA

STAR

OKUJI ARRIVAL

From over OKUJI, via IXE R241 to intercept and proceed via FKE R192 to SOUMA.
Cross SOUMA at or above 4600FT.

CHANGE : BRG for OKUJI HLDG Pattern, Radial FM IXE to OKUJI



STANDARD ARRIVAL CHART-INSTRUMENT

RJSF / FUKUSHIMA

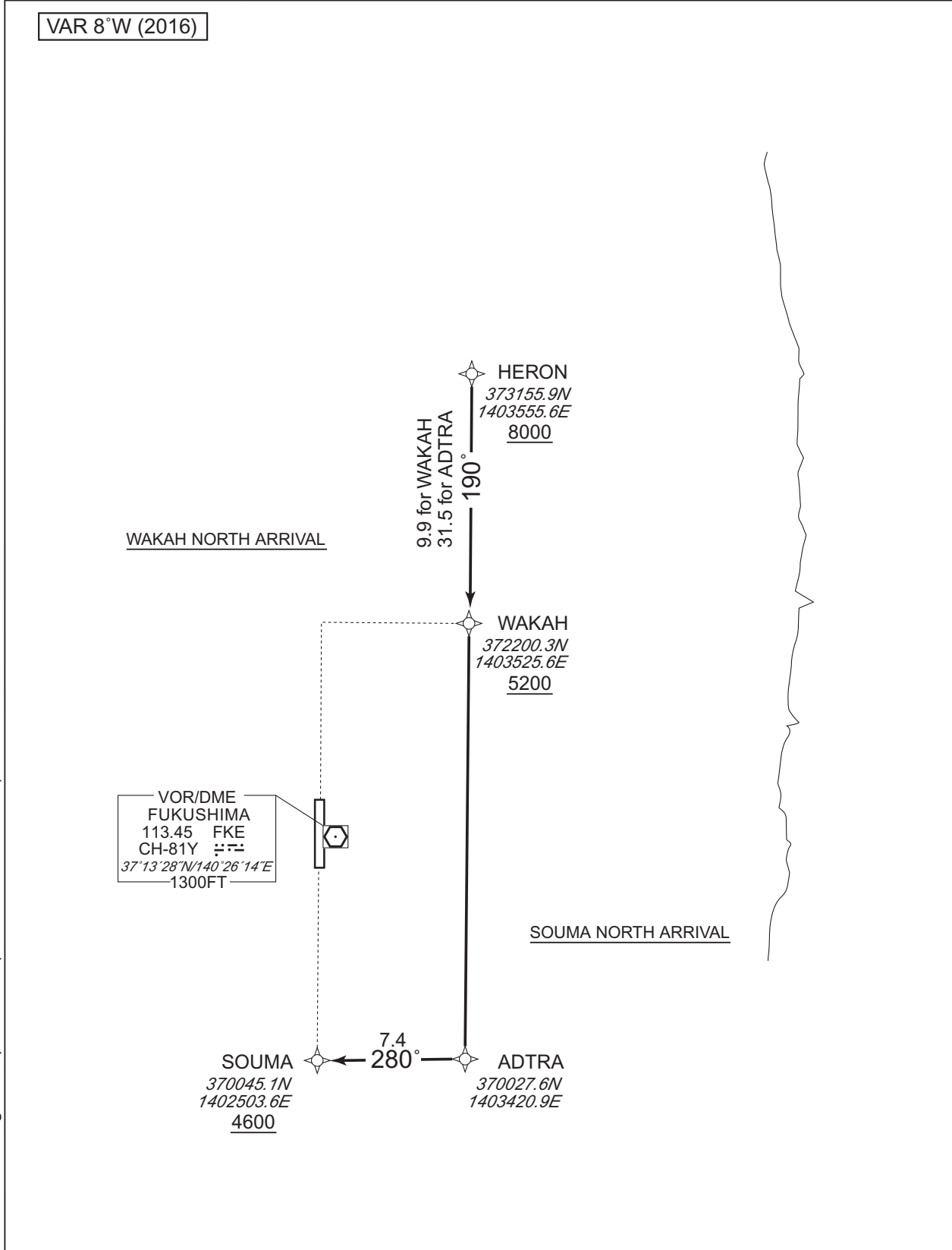
RNAV STAR RWY01/19

WAKAH NORTH ARRIVAL SOUMA NORTH ARRIVAL	RNP1
--	------

Note GNSS required.

VAR 8°W (2016)

CHANGE : Navigation Specification(Basic RNP1 → RNP1).



STANDARD ARRIVAL CHART-INSTRUMENT

RJSF / FUKUSHIMA

RNAV STAR RWY01/19

WAKAH NORTH ARRIVAL

From HERON at or above 8000FT, to WAKAH at or above 5200FT.

Serial Number	Path Descriptor	Waypoint Identifier	Fly Over	Course °M(°T)	Magnetic Variation	Distance (NM)	Turn Direction	Altitude (FT)	Speed (KIAS)	Vertical Angle	Navigation Specification
001	IF	HERON	-	-	-7.8	-	-	+8000	-	-	RNP1
002	TF	WAKAH	-	190 (182.3)	-7.8	9.9	-	+5200	-	-	RNP1

SOUMA NORTH ARRIVAL

From HERON at or above 8000FT, to ADTRA, to SOUMA at or above 4600FT.

Serial Number	Path Descriptor	Waypoint Identifier	Fly Over	Course °M(°T)	Magnetic Variation	Distance (NM)	Turn Direction	Altitude (FT)	Speed (KIAS)	Vertical Angle	Navigation Specification
001	IF	HERON	-	-	-7.8	-	-	+8000	-	-	RNP1
002	TF	ADTRA	-	190 (182.3)	-7.8	31.5	-	-	-	-	RNP1
003	TF	SOUMA	-	280 (272.3)	-7.8	7.4	-	+4600	-	-	RNP1

CHANGE : Navigation Specification(Basic RNP1 → RNP1).

STANDARD ARRIVAL CHART-INSTRUMENT

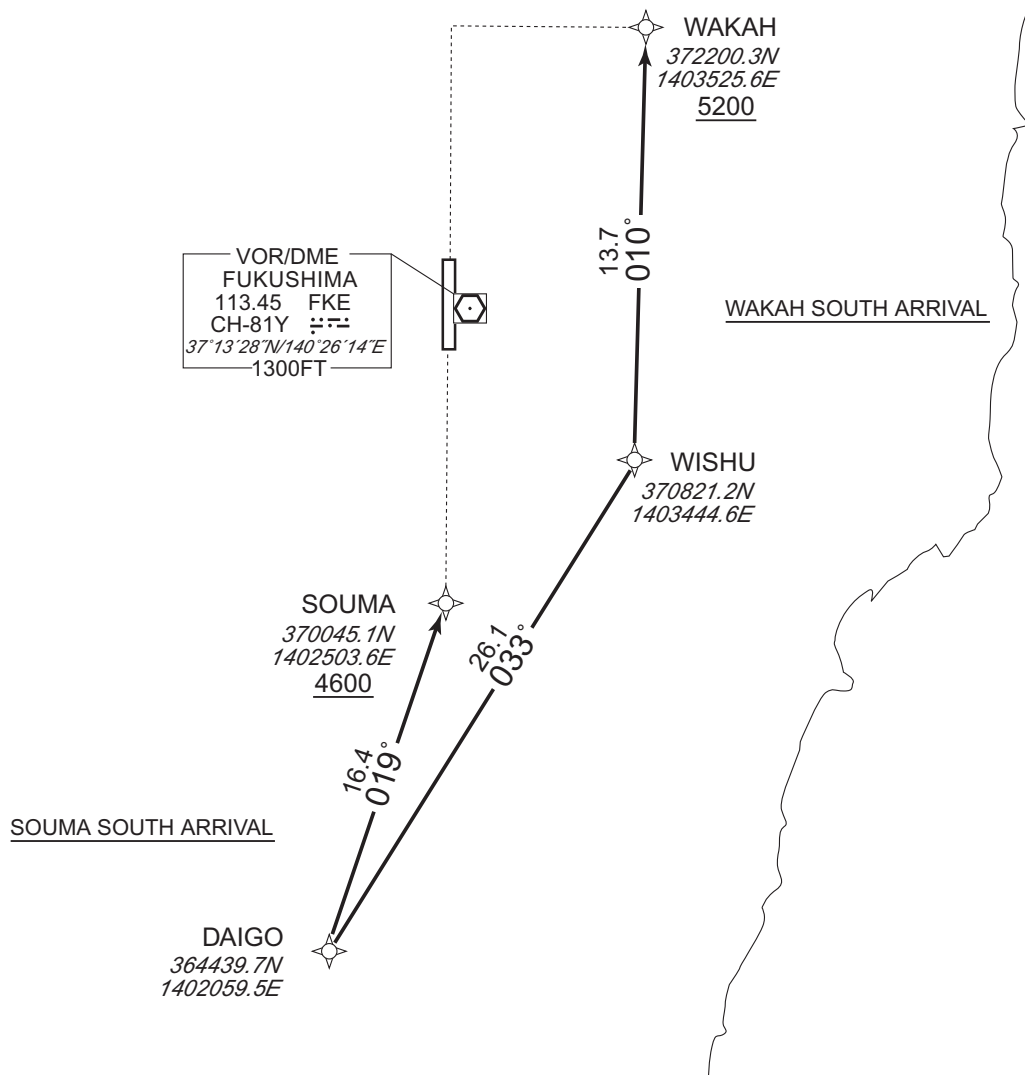
RJSF / FUKUSHIMA

RNAV STAR RWY01/19

WAKAH SOUTH ARRIVAL SOUMA SOUTH ARRIVAL	RNP1
--	------

Note GNSS required.

VAR 8°W (2016)



CHANGE : Navigation Specification(Basic RNP1 → RNP1).

STANDARD ARRIVAL CHART-INSTRUMENT

RJSF / FUKUSHIMA

RNAV STAR RWY01/19

WAKAH SOUTH ARRIVAL

From DAIGO, to WISHU, to WAKAH at or above 5200FT.

Serial Number	Path Descriptor	Waypoint Identifier	Fly Over	Course °M(°T)	Magnetic Variation	Distance (NM)	Turn Direction	Altitude (FT)	Speed (KIAS)	Vertical Angle	Navigation Specification
001	IF	DAIGO	-	-	-7.8	-	-	-	-	-	RNP1
002	TF	WISHU	-	033 (024.8)	-7.8	26.1	-	-	-	-	RNP1
003	TF	WAKAH	-	010 (002.3)	-7.8	13.7	-	+5200	-	-	RNP1

SOUMA SOUTH ARRIVAL

From DAIGO, to SOUMA at or above 4600FT.

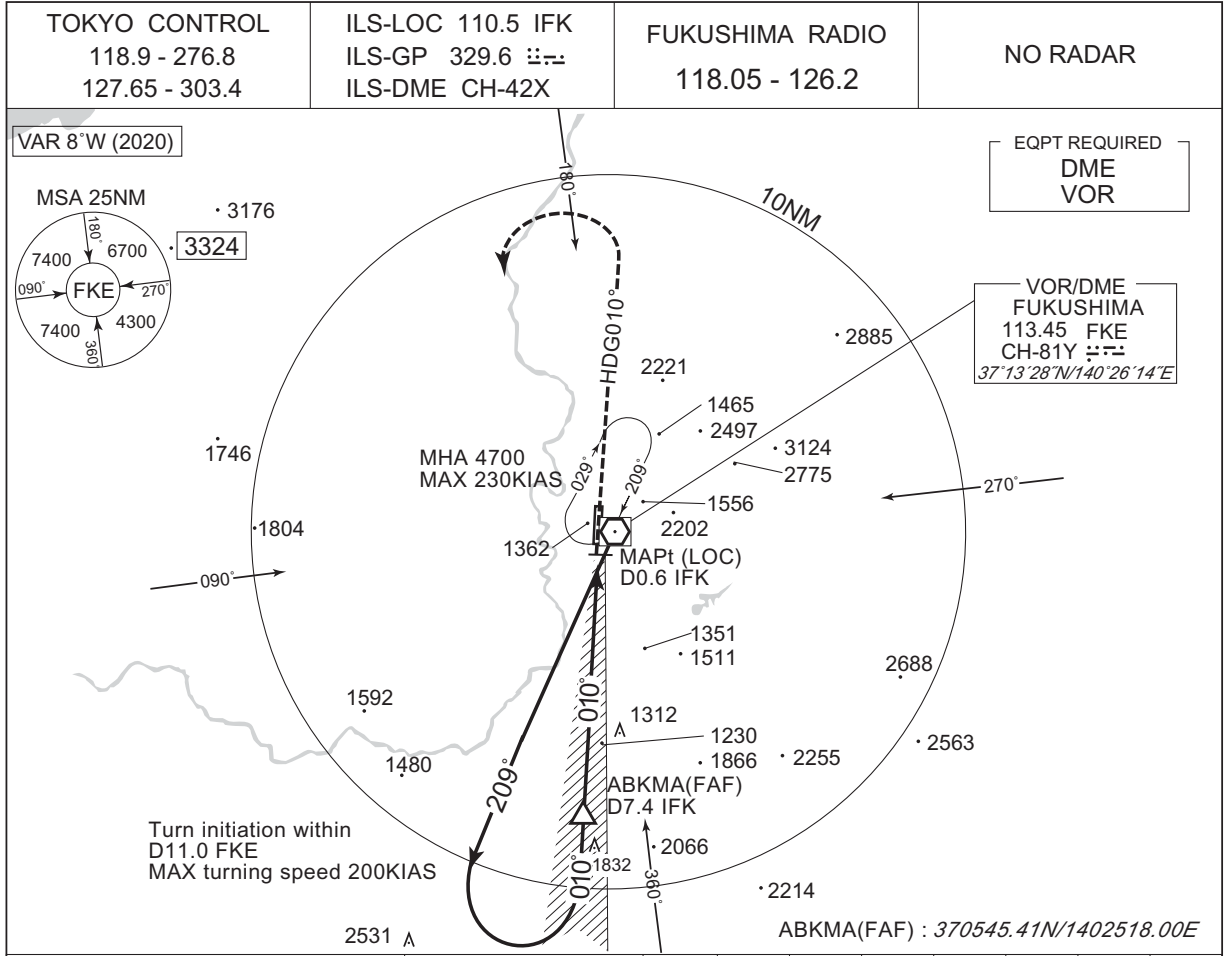
Serial Number	Path Descriptor	Waypoint Identifier	Fly Over	Course °M(°T)	Magnetic Variation	Distance (NM)	Turn Direction	Altitude (FT)	Speed (KIAS)	Vertical Angle	Navigation Specification
001	IF	DAIGO	-	-	-7.8	-	-	-	-	-	RNP1
002	TF	SOUMA	-	019 (011.4)	-7.8	16.4	-	+4600	-	-	RNP1

CHANGE : Navigation Specification(Basic RNP1 → RNP1).

INSTRUMENT APPROACH CHART

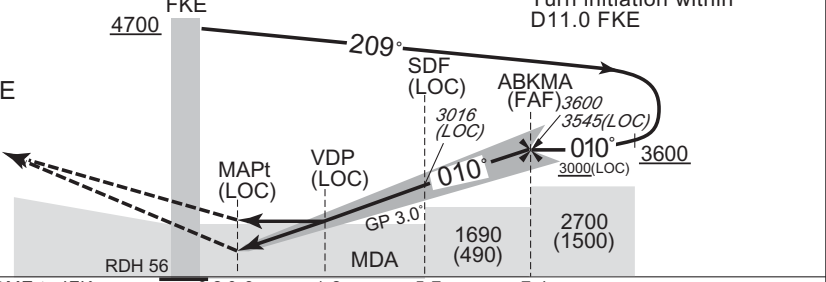
RJSF / FUKUSHIMA

ILS Z or LOC Z RWY01



	NM to IFK	MAPt	2	3	4	5	6	7	FAF
	ALT(3.0° APCH Path)	-	1837	2156	2474	2793	3111	3430	3545

MISSED APPROACH
Climb to 3000FT on HDG010°, turn left, direct to FKE VOR/DME and hold at 4700FT.
Contact FUKUSHIMA RADIO.
Timing not authorized for defining the MAPt.



DME to IFK	0.2	0.6	1.2	5.7	7.4
NM to THR	0	0.5	1.1	5.5	7.2

Missed APCH climb gradient MNM 4.0%
MINIMA THR elev. 1200 AD elev. 1220

CAT	CAT I		LOC		CIRCLING	
	DA(H)	RVR/CMV	MDA(H)	RVR/CMV	MDA(H)	VIS
A	1400 (200)	550	1560 (360)	1000	900	1600
B					1670(450)	
C					2400	
D					1770(550)	

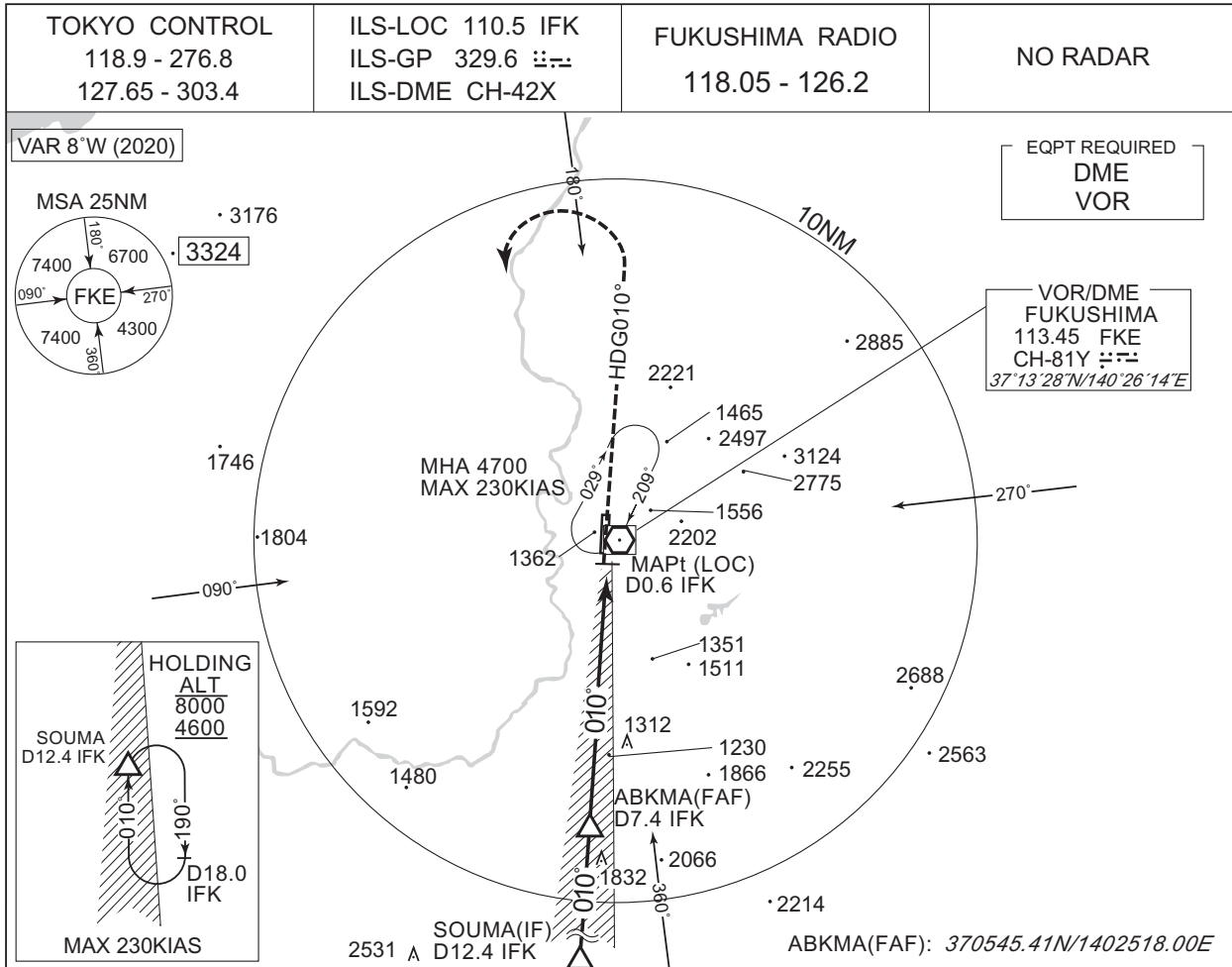
MINIMA with Missed APCH climb gradient of 2.5% are not established.
Circling to WEST side of RWY only.

CHANGE : FREQ for TOKYO CONTROL.

INSTRUMENT APPROACH CHART

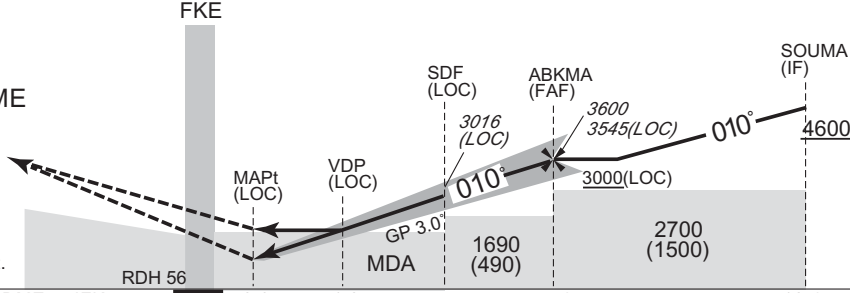
RJSF / FUKUSHIMA

ILS Y or LOC Y RWY01



	NM to IFK	MAPt	2	3	4	5	6	7	FAF
	ALT(3.0° APCH Path)	-	1837	2156	2474	2793	3111	3430	3545

MISSED APPROACH
Climb to 3000FT on HDG010°, turn left, direct to FKE VOR/DME and hold at 4700FT.
Contact FUKUSHIMA RADIO.



	DME to IFK	0.2	0.6	1.2	5.7	7.4	12.4
	NM to THR	0	0.5	1.1	5.5	7.2	12.2

Missed APCH climb gradient MNM 4.0%

MINIMA		THR elev. 1200	AD elev. 1220					
CAT	CAT I	LOC	CIRCLING					
	DA(H)	RVR/CMV	MDA(H)	RVR/CMV	MDA(H)	VIS		
A	1400 (200)	550	1560 (360)	900	1670(450)	1600		
B				1000				
C				1400			1770(550)	3200
D				1400			1770(550)	3200

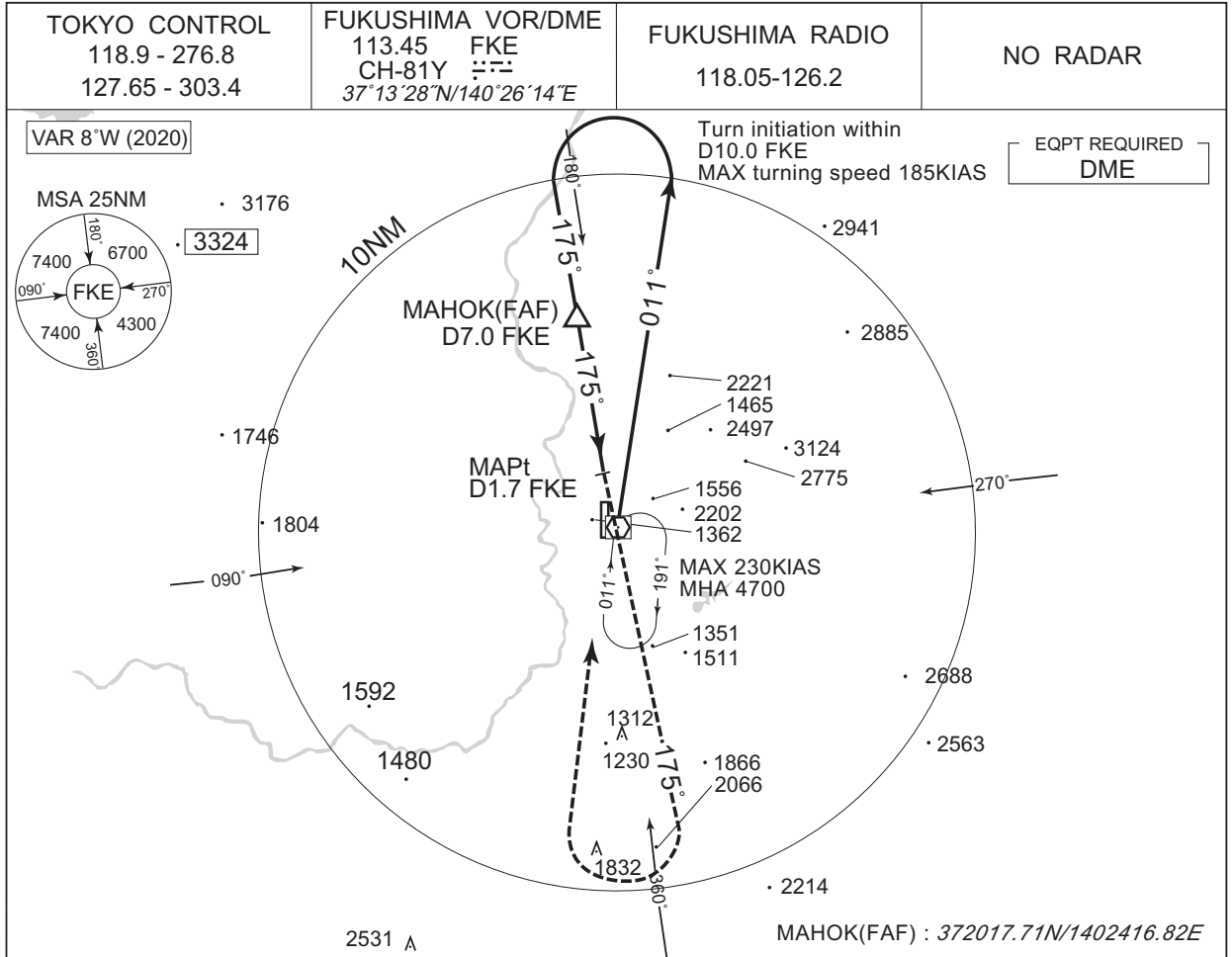
MINIMA with Missed APCH climb gradient of 2.5% are not established.
Circling to WEST side of RWY only.

CHANGE : FREQ for TOKYO CONTROL.

INSTRUMENT APPROACH CHART

RJSF / FUKUSHIMA

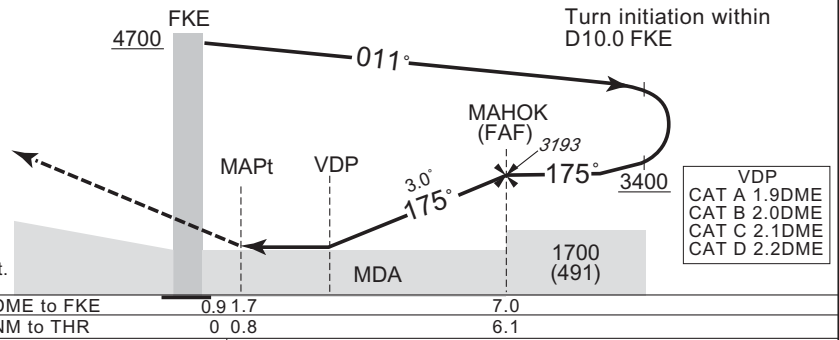
VOR RWY19



CHANGE : FREQ for TOKYO CONTROL.

MISSED APPROACH
 Climb to 3000FT via FKE R175, turn right, direct to FKE VOR/DME and hold at 4700FT. Contact FUKUSHIMA RADIO.

* Timing not authorized for defining the MAPt.



	MINIMA	THR elev. 1209	AD elev. 1220	
CAT			CIRCLING	
	MDA(H)	CMV	MDA(H)	VIS
A	1550 (341)	1200	1670(450)	1600
B	1590 (381)	1300		2400
C	1620 (411)	1400	1770(550)	3200
D	1640 (431)	1600		

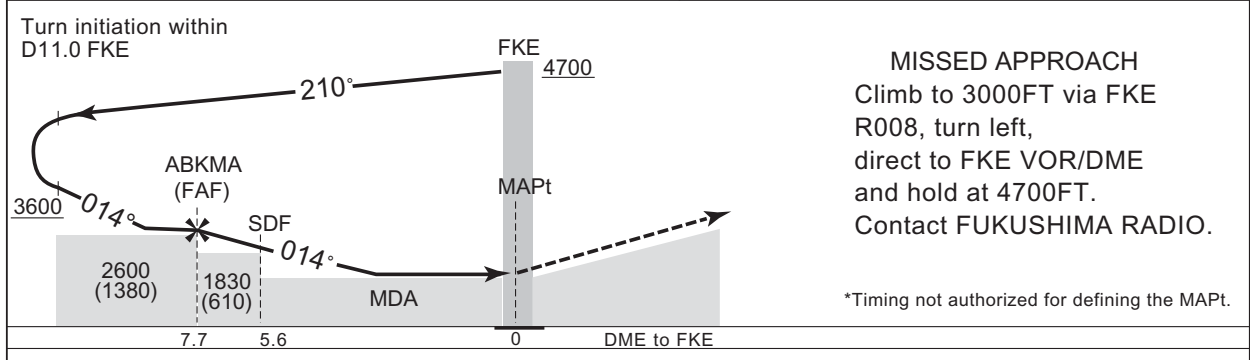
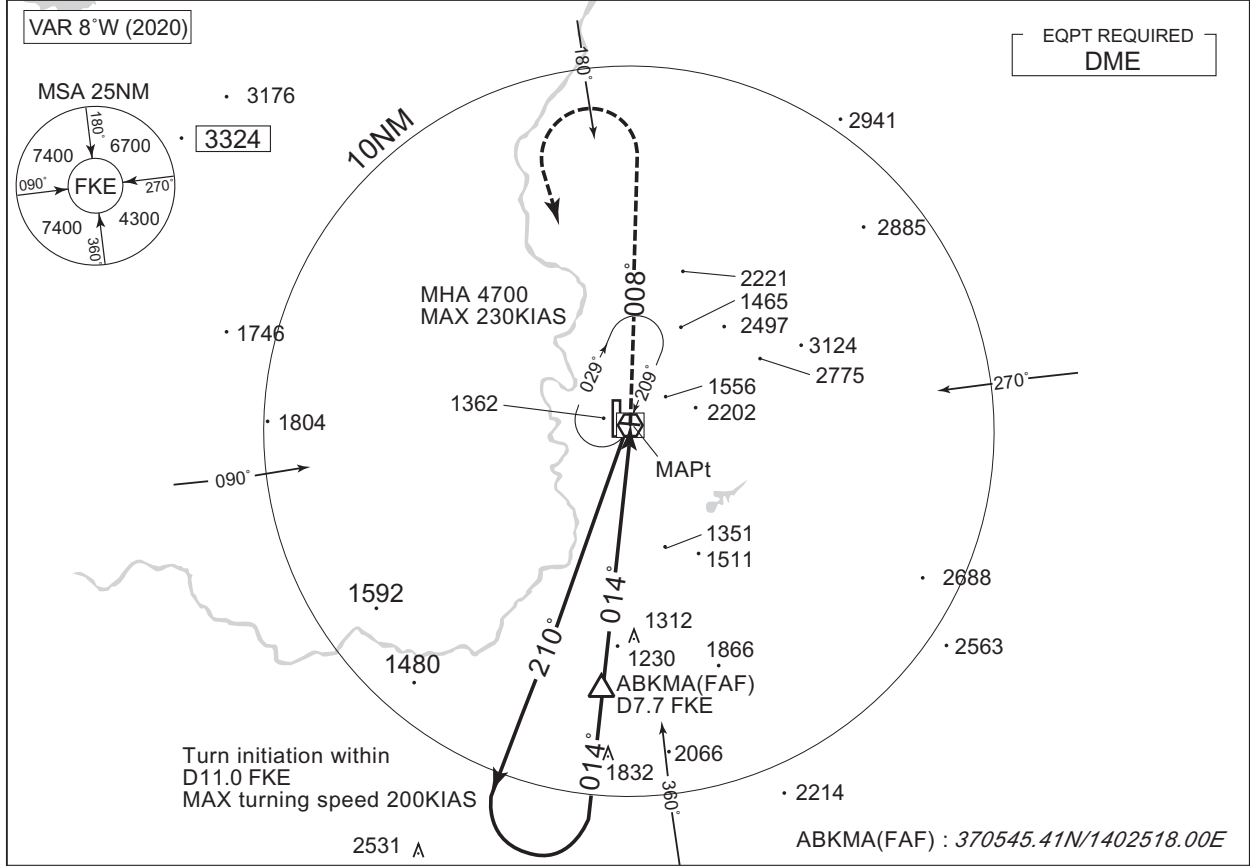
Circling to WEST side of RWY only.

INSTRUMENT APPROACH CHART

RJSF / FUKUSHIMA

VOR A

TOKYO CONTROL 118.9 - 276.8 127.65 - 303.4	FUKUSHIMA VOR/DME 113.45 FKE CH-81Y 37°13'28"N/140°26'14"E	FUKUSHIMA RADIO 118.05 - 126.2	NO RADAR
--	---	-----------------------------------	----------



CHANGE : FREQ for TOKYO CONTROL.

MINIMA		AD elev. 1220	
CAT	CIRCLING		VIS
	MDA(H)		
A			1600
B	1680 (460)		2400
C			3200
D	1770 (550)		

Circling to WEST side of RWY only.

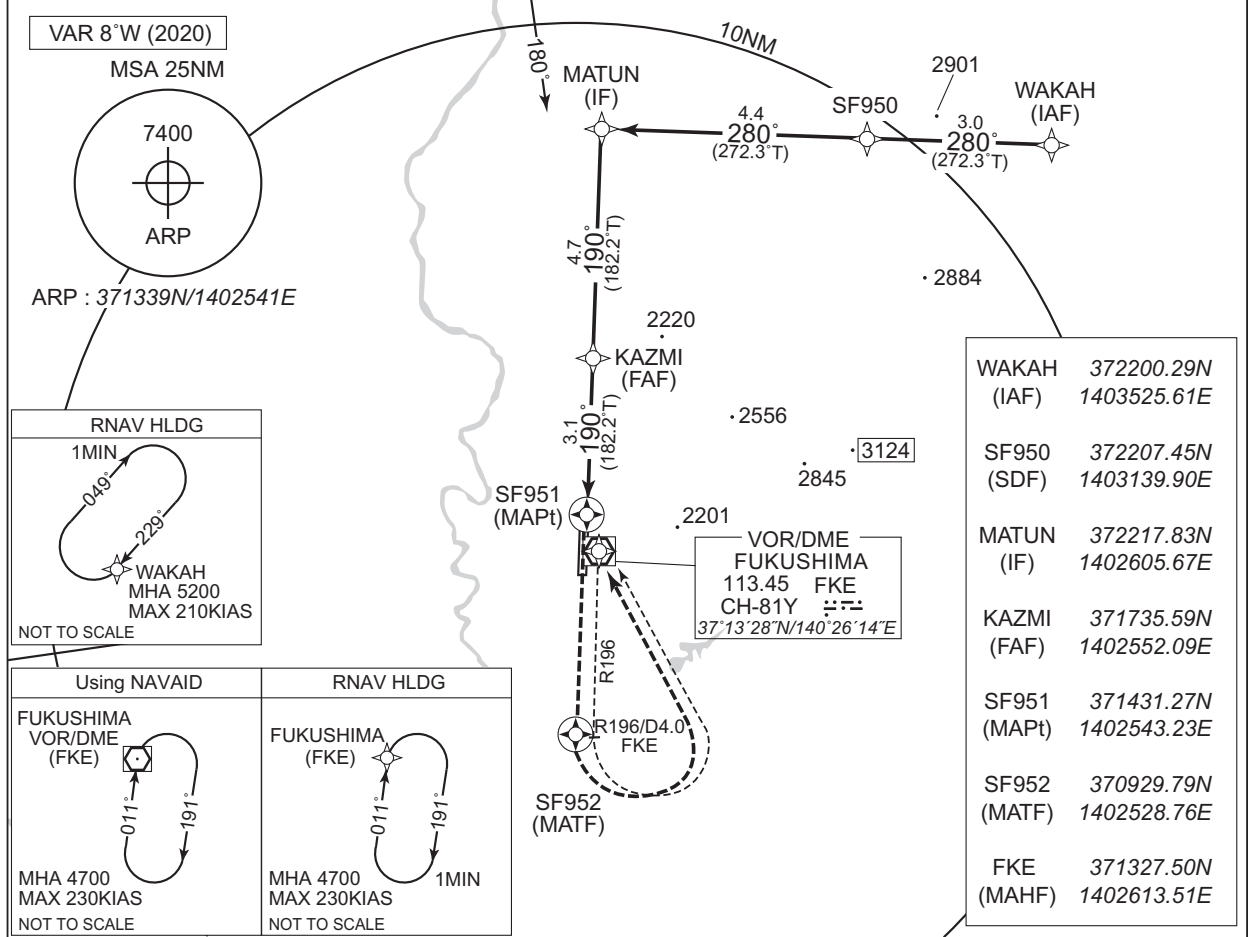
INSTRUMENT APPROACH CHART

RJSF / FUKUSHIMA

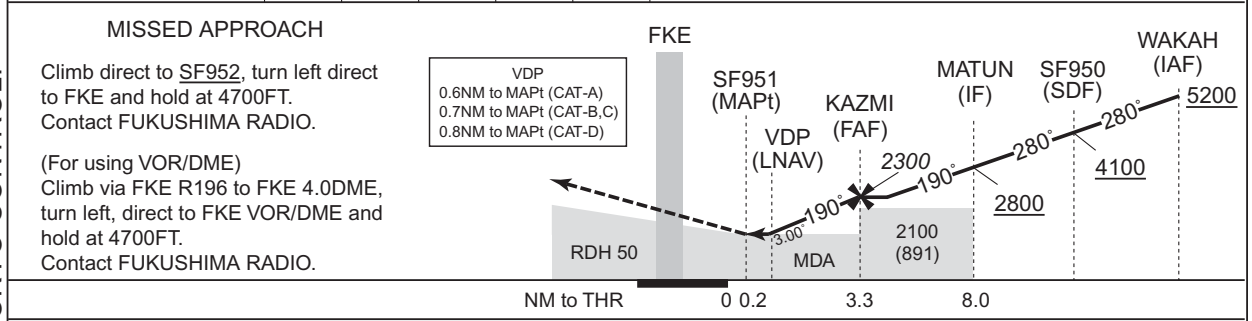
RNP RWY19

TOKYO CONTROL 118.9 - 276.8 127.65 - 303.4	RNP APCH	FUKUSHIMA RADIO 118.05 - 126.2	NO RADAR
--	----------	-----------------------------------	----------

Baro-VNAV not authorized below -15°C



NM to Next Fix	MAPt	1	2	3	FAF
ALT(3.0° APCH Path)	-	1641	1959	2278	2300



CHANGE : FREQ for TOKYO CONTROL.

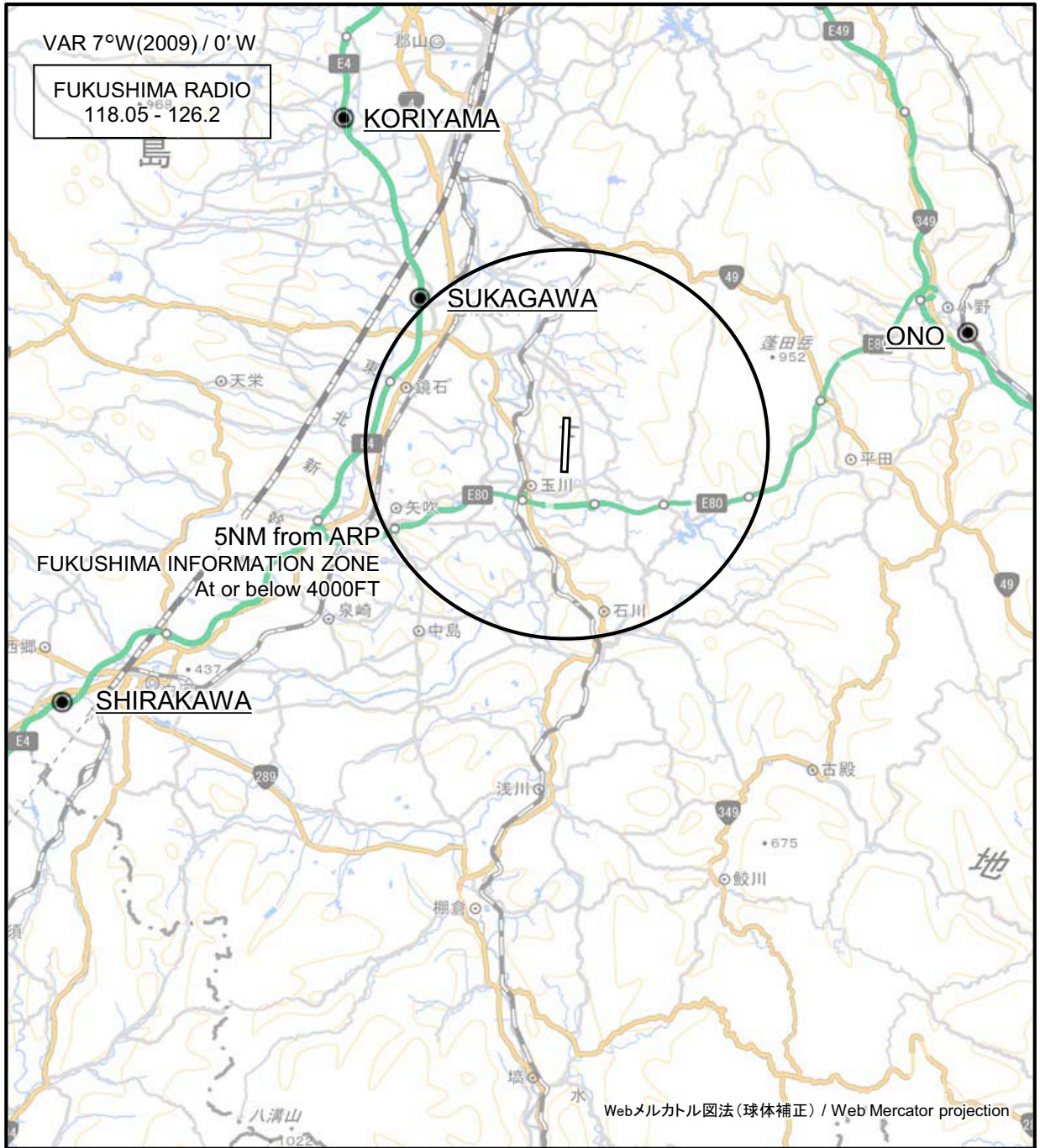
Missed APCH climb gradient MNM 3.0%

CAT	LNAV/VNAV		LNAV		CIRCLING	
	DA(H)	CMV	MDA(H)	CMV	MDA(H)	VIS
A	1520 (311)	1200	1520 (311)	1200	1670 (450)	1600
B	1540 (331)	1300	1540 (331)	1300		2400
C	1560 (351)	1400	1560 (351)	1400	1770 (550)	3200
D	1580 (371)	1600	1580 (371)	1600		

MINIMA with Missed APCH climb gradient of 2.5% are not established. Circling to WEST side of RWY only.

RJSF / FUKUSHIMA

Visual REP



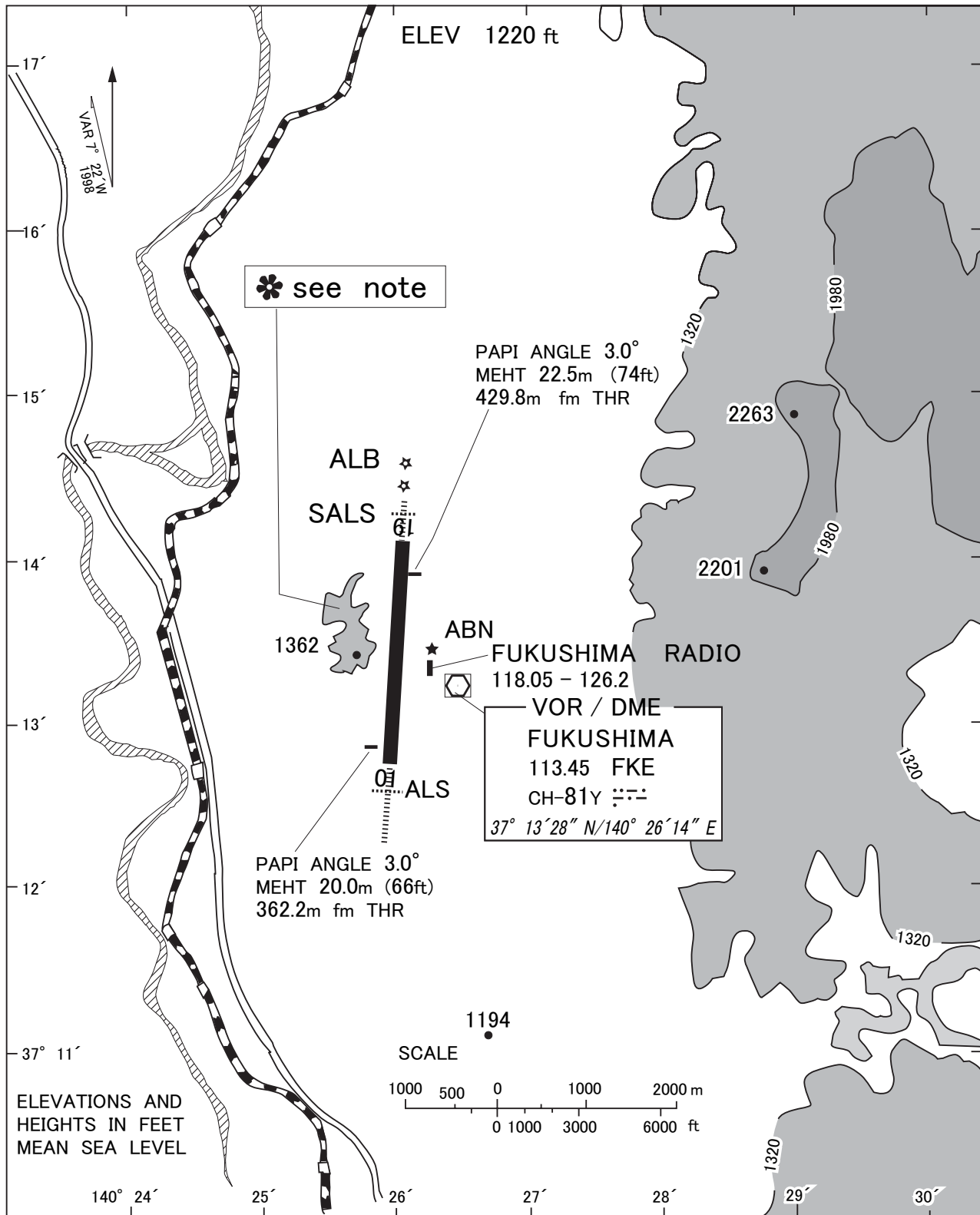
CHANGE : Map updated. BRG/DIST from ARP.

※図中に標高を示す数字がある場合、単位はメートル(m)である。The unit of measurement used to express elevation is meter(m).

Call sign	BRG / DIST from ARP	Remarks
郡山 Koriyama	326°T / 10.1NM	郡山南IC Interchange
須賀川 Sukagawa	316°T / 5.3NM	須賀川IC Interchange
小野 Ono	074°T / 10.4NM	JR小野新町駅 Station
白河 Shirakawa	242°T / 14.3NM	白河IC Interchange

RJSF / FUKUSHIMA

LDG CHART



Note : RWY may be invisible on down-wind leg of westside traffic pattern depending on altitude.

RJSF / FUKUSHIMA

Minimum Vectoring Altitude CHART

CHANGE : Shape of Minimum Vectoring Altitude.

