

AD 2 AERODROMES

RJSF AD 2.1 AERODROME LOCATION INDICATOR AND NAME

RJSF - FUKUSHIMA

RJSF AD 2.2 AERODROME GEOGRAPHICAL AND ADMINISTRATIVE DATA

1	ARP coordinates and site at AD	371339N 1402541E 2°/1.25km FM RWY 01 THR
2	Direction and distance from (city)	19.4km(10.5nm) SSE of Koriyama station
3	Elevation/ Reference temperature	1220ft / 29°C(2004-2008)
4	Geoid undulation at AD ELEV PSN	139ft
5	MAG VAR/ Annual change	7°W(2009) / 0' W
6	AD Administration, address, telephone, telefax, telex, AFS, e-mail and/or Web-site addresses	Fukushima Airport office(Fukushima prefectural government) 21 habakita kitasugama tamakawa-mura ishikawa-gun fukushima pref 963-6304 Japan Tel:0247-57-1111 Fax:0247-57-1257 e-mail:fukushimakuukou@pref.fukushima.lg.jp URL:http:// www.pref.fukushima.lg.jp/sec/41410a/
7	Types of traffic permitted(IFR/VFR)	IFR/VFR
8	Remarks	Fukushima Airport Branch(Civil Aviation Bureau) 21 habakita kitasugama tamakawa-mura ishikawa-gun fukushima pref 963-6304 Japan Tel.0247-57-1101 Fax.0247-57-1104

RJSF AD 2.3 OPERATIONAL HOURS

1	AD Administration	2300 - 1200
2	Customs and immigration	Customs: 2330-0815 Immigration: On request(024-962-7221)
3	Health and sanitation	Quarantine(human): 2330-0815 Quarantine(animal): On request(022-383-2302) Quarantine(plant): On request(022-362-6916)
4	AIS Briefing Office	Nil
5	ATS Reporting Office(ARO)	Nil
6	MET Briefing Office	H24 (TOKYO)
7	ATS	2300 - 1200
8	Fuelling	2300 - 1200
9	Handling	2200 - 1100
10	Security	2200 - 1030
11	De-icing	Nil
12	Remarks	Nil

RJSF AD 2.4 HANDLING SERVICES AND FACILITIES

1	Cargo-handling facilities	All the modern institutions that deal with the weight thing to Boeing 767 type freighter.
2	Fuel/ oil types	Fuel grades:JET A-1
3	Fuelling facilities/ capacity	Fuel truck refueling / 200KL
4	De-icing facilities	Nil
5	Hangar space for visiting aircraft	Nil
6	Repair facilities for visiting aircraft	Nil
7	Remarks	Nil

RJSF AD 2.5 PASSENGER FACILITIES

1	Hotels	Nil
2	Restaurants	At Airport
3	Transportation	Buses,Taxi and rental car
4	Medical facilities	Hospital in Sukagawa city 10km
5	Bank and Post Office	Cash Service ,Post
6	Tourist Office	Nil
7	Remarks	Nil

RJSF AD 2.6 RESCUE AND FIRE FIGHTING SERVICES

1	AD category for fire fighting	CAT 9
2	Rescue equipment	Chemical fire fighting truck x 3, Water-supply truck, Emergency medical equipments conveyance truck
3	Capability for removal of disabled aircraft	Ask AD Administration
4	Remarks	Nil

RJSF AD 2.7 SEASONAL AVAILABILITY-CLEARING

1	Types of clearing equipment	Snow Removal Equipments : snow plows x 4, roturies x 2, snow sweepers x 5, urea sprinkler equipments x 2
2	Clearance priorities	1. RWY, TWY(parallel ,T1,T6 ,A1) 2. TWY(T2 - T5 , A2) ,Apron
3	Remarks	Seasonal availability: All seasons Snow removal will be commenced,if the RWY and TWY are covered with a depth of 3cm snow or more.

RJSF AD 2.8 APRONS, TAXIWAYS AND CHECK LOCATIONS DATA

1	Apron surface and strength	Surface:Concrete Strength:PCN 52/R/B/X/T
2	Taxiway width, surface and strength	Width: T2 - T5, A1 and A2 : 34m T1 and T6 : 32m P1 - P6 : 30m Surface: Asphalt-Concrete Strength: PCN 58/F/A/X/T
3	ACL and elevation	Not available
4	VOR checkpoints	Not available
5	INS checkpoints	Spot NR 1: 371340.87N 1402558.67E 2: 371339.17N 1402558.59E 3: 371337.05N 1402558.26E 5: 371334.95N 1402558.39E 6: 371333.26N 1402558.20E 7: 371331.39N 1402558.05E
6	Remarks	Nil

RJSF AD 2.9 SURFACE MOVEMENT GUIDANCE AND CONTROL SYSTEM AND MARKINGS

1	Use of aircraft stand ID signs, TWY guide lines and Visual docking/ parking guidance system of aircraft stands	Aircraft stand identification signs:Spot 1-3,5-7 Aircraft stand taxi lane:A1,A2 Visual docking guidance system:Nil
2	RWY and TWY markings and LGT	RWY:01/19 (Marking)RWY designation, RWY CL, RWY THR, Aiming point, TDZ, RWY side stripe (LGT)RCLL, REDL, RTHL, RENL, RTZL(for RWY01), WBAR(for RWY01), RWY DIST marker LGT TWY: (Marking)TWY CL, RWY HLDG PSN, TWY side stripe (LGT)TWY edge LGT, TWY CL LGT, RWY guard LGT(T1-T6), Taxiing guidance sign(T1-T6)
3	Stop bars	Nil
4	Remarks	(Marking) Overrun area, ACFT PRKG PSN, Apron TWY CL (LGT) Apron flood LGT

RJSF AD 2.10 AERODROME OBSTACLES

■ In Area2 See Obstacle data

■ In Area3 To be developed

RJSF AD 2.11 METEOROLOGICAL INFORMATION PROVIDED

1	Associated MET Office	TOKYO
2	Hours of service MET Office outside hours	H24 (TOKYO)
3	Office responsible for TAF preparation Periods of validity	TOKYO 30 Hours
4	Trend forecast Interval of issuance	Nil
5	Briefing/ consultation provided	Briefing is available upon inquiry at TOKYO
6	Flight documentation Language(s) used	C En
7	Charts and other information available for briefing or consultation	S ₆ , U ₈₅ , U ₇ , U ₅ , U ₃ , U ₂₅ , P _S , P ₅ , P ₃ , P ₂₅ , P _{SWE} , P _{SWF} , P _{SWG} , P _{SWI} , P _{SWM} , P _{SW} (domestic), U ₂ /Tr, E, C, W _E , W _F , W _G , W _I , W, N
8	Supplementary equipment available for providing information	Nil
9	ATS units provided with information	RADIO
10	Additional information(limitation of service, etc.)	Nil

RJSF AD 2.12 RUNWAY PHYSICAL CHARACTERISTICS

Designations RWY NR	TRUE BRG	Dimensions of RWY(M)	Strength(PCN) and surface of RWY	THR coordinates THR geoid undulation	THR elevation and highest elevation of TDZ of precision APP RWY
1	2	3	4	5	6
01	002.20°	2500x60	PCN 58/F/A/X/T Asphalt Concrete	371258.23N 1402538.76E 139ft	THR ELEV: 1200ft TDZ ELEV: 1218ft
19	182.20°	2500x60	PCN 58/F/A/X/T Asphalt Concrete	371419.26N 1402542.65E 139ft	THR ELEV: 1209ft
Slope of RWY	Strip Dimensions(M)	RESA (Overrun) Dimensions(M)	Remarks		
7	10	11	14		
See AD2.24 AD CHART	2620x300 2620x300	192 x (MNM:200 MAX:300)* 42 x (MNM:275 MAX:300)* *For detail, ask airport administrator	RWY Grooving:2500x60m		

RJSF AD 2.13 DECLARED DISTANCES

RWY Designator	TORA (m)	TODA (m)	ASDA (m)	LDA (m)	Remarks
1	2	3	4	5	6
01	2500	2500	2500	2500	Nil
19	2500	2500	2500	2500	Nil

RJSF AD 2.14 APPROACH AND RUNWAY LIGHTING

RWY Designator	APCH LGT type LEN INTST	RTHL Color WBAR	PAPI (VASIS) Angle DIST FM THR MEHT	RTZL LEN	RCLL LEN Spacing Color INTST	REDL LEN Spacing Color INTST	RENL Color WBAR	STWL LEN Color
1	2	3	4	5	6	7	8	9
01	PALS (CAT I) 900m LIH	Green Green	PAPI 3.0°/Left 362.2m 66ft	900m	2500m 30m Coded Color (White/Red) LIH	2500m 60m Coded Color (White/Yellow) LIH	Red	Nil (*2)
19	SALS (*1) 420m LIH	Green Nil	PAPI 3.0°/Left 429.8m 74ft	Nil	2500m 30m Coded Color (White/Red) LIH	2500m 60m Coded Color (White/Yellow) LIH	Red	Nil (*2)
Remarks								
10								
SALS with APCH LGT beacon (600m and 900m FM RWY THR) (*1) Overrun area edge LGT(LEN60m color:Red) (*2)								

RJSF AD 2.15 OTHER LIGHTING, SECONDARY POWER SUPPLY

1	ABN/IBN location, characteristics and hours of operation	ABN: 371343N/1402601E, White/Green EV4.3sec, HO
2	LDI location and LGT Anemometer location and LGT	LDI:Nil Anemometer: RWY01:246m FM RWY01 THR, LGTD RWY19:283m FM RWY19 THR. LGTD
3	TWY edge and center line lighting	TWY edge and center line lights installed, see AD2.9
4	Secondary power supply/ switch-over time	Within 1sec : REDL, RCLL, RTHL, RENL, WBAR, Overrun area edge LGT Within 15sec : Other LGT
5	Remarks	WDI LGT

RJSF AD 2.16 HELICOPTER LANDING AREA

Nil

RJSF AD 2.17 ATS AIRSPACE

Designation and lateral limits		Vertical limits (ft)	Airspace classification	ATS unit call sign Language	Remarks
1		2	3	4	6
Fukushima Information Zone	Area within a radius of 5nm(9km) of Fukushima ARP	4,000 or below	E	Fukushima Radio En	

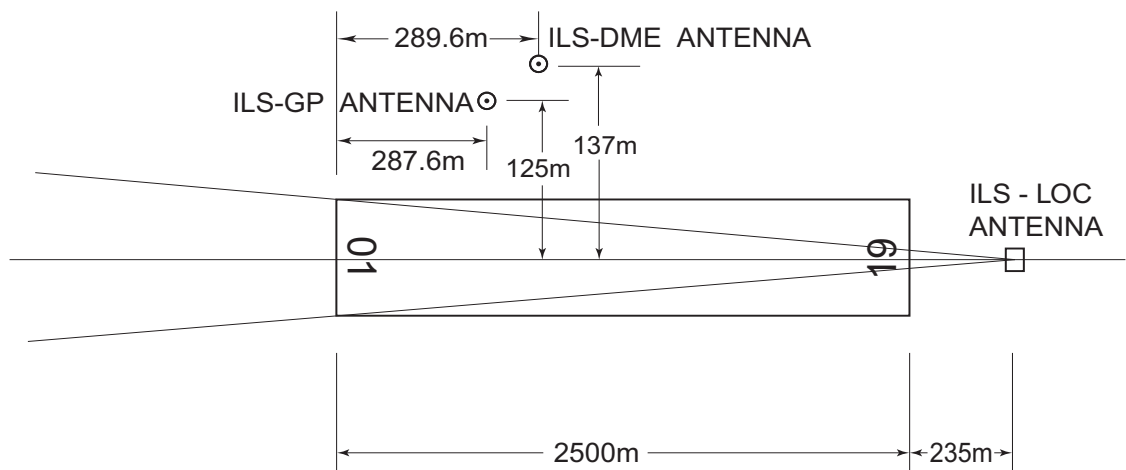
RJSF AD 2.18 ATS COMMUNICATION FACILITIES

Service designation	Call sign	Frequency	Hours of operation	Remarks
1	2	3	4	5
AFIS	Fukushima Radio	118.05MHz(1) 126.2MHz	2300 - 1200	(1)Primary

RJSF AD 2.19 RADIO NAVIGATION AND LANDING AIDS

Type of aid (VOR declination)	ID	Frequency	Hours of operation	Position of transmitting antenna coordinates	Elevation of DME transmitting antenna	Remarks
1	2	3	4	5	6	7
VOR (8°W/2020)	FKE	113.45MHz	H24	371327.50N 1402613.51E		VOR unusable: 040° - 050° beyond 20nm BLW 6000ft. 050° - 070° beyond 15nm BLW 6000ft. 070° - 080° beyond 10nm BLW 6000ft. 080° - 090° beyond 20nm BLW 6000ft. 090° - 100° beyond 20nm BLW 5000ft. 100° - 130° beyond 30nm BLW 5000ft. 130° - 150° beyond 35nm BLW 5000ft.
DME	FKE	1042MHz (CH-81Y)	H24	371327.50N 1402613.51E	1313ft	DME unusable: 040° - 050° beyond 20nm BLW 6000ft. 050° - 060° beyond 15nm BLW 6000ft. 060° - 080° beyond 10nm BLW 6000ft. 080° - 090° beyond 15nm BLW 6000ft. 090° - 110° beyond 20nm BLW 5000ft. 110° - 130° beyond 30nm BLW 5000ft. 130° - 140° beyond 35nm BLW 5000ft.
ILS-LOC 01	IFK	110.5MHz	2300 - 1200	371426.89N 1402543.02E		LOC: 235m(771ft) away FM RWY19 THR, BRG (MAG) 010.27°
ILS-GP 01	-	329.6MHz	2300 - 1200	371307.66N 1402534.18E		GP: 287.6m(944ft) inside FM RWY01 THR, 125m(410ft) W of RCL. HGT of ILS Ref datum 17.0m(56ft). GP angle 3.0°
ILS-DME 01	IFK	1003MHz (CH-42X)	2300 - 1200	371307.61N 1402533.69E	1218ft	DME: 289.6m(950ft) inside FM RWY01 THR, 137m(449ft) W of RCL.
MSAS		1575.42MHz	H24			Transmitting antennas are satellite based.

ILS



- REMARKS :
- 1 LOC beam BRG(MAG) 10.27°
 - 2 HGT of ILS REF datum 17.0m(56ft)
 - 3 GP Angle 3.0°
 - 4 ELEV of ILS-DME 371.2m(1218ft)

RJSF AD 2.20 LOCAL TRAFFIC REGULATIONS

1. Airport regulations

On use of this airport, the operator is required to obtain the prior permission of the airport administrator in advance.

2. Taxiing to and from stands

Nil

3. Parking area for small aircraft(General aviation)

Nil

4. Parking area for helicopters

Nil

5. Apron - taxiing during winter conditions

Nil

6. Taxiing - limitations

Nil

7. School and training flights - technical test flights - use of runways

Nil

8. Helicopter traffic - limitation

Nil

9. Removal of disabled aircraft from runways

Nil

RJSF AD 2.21 NOISE ABATEMENT PROCEDURES

Nil

RJSF AD 2.22 FLIGHT PROCEDURES

1. TAKE OFF MINIMA

	RWY	REDL and RCLL		REDL or RCLL or RCL Marking		NIL (DAY ONLY)	
		RVR	VIS	RVR	VIS	RVR	VIS
Multi-Engine ACFT with TKOF ALTN AP Filed	01	400m	400m	400m	400m	-	500m
	19	-	400m	-	400m	-	500m
OTHER	01	AVBL LDG MINIMA					
	19						

2. Other

- 1) VFR aircraft intending to land on or fly around Fukushima AP is required to make initial contact with Fukushima RADIO to obtain traffic information at least 15nm far from the AP.
- 2) The operator needs to keep at or above 2200ft for insight of the whole RWY.

RJSF AD 2.23 ADDITIONAL INFORMATION

Nil

RJSF AD 2.24 CHARTS RELATED TO AN AERODROME

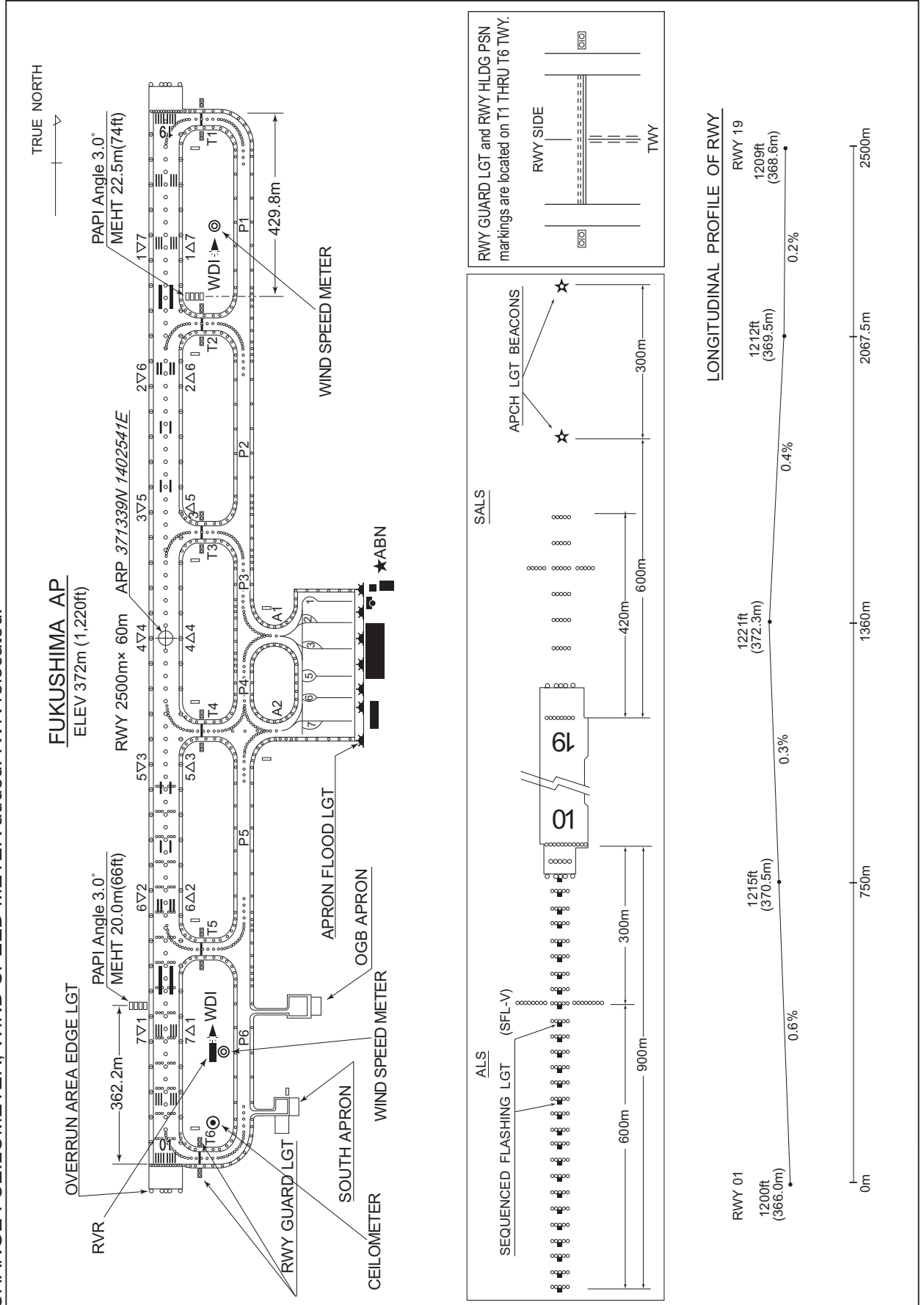
- Aerodrome/Heliport Chart
- Standard Departure Chart - Instrument (NASNO)
- Standard Departure Chart - Instrument (FUKUSHIMA REVERSAL)
- Standard Departure Chart - Instrument (SOUTH-RNAV)
- Standard Departure Chart - Instrument (WEST-RNAV)
- Standard Arrival Chart - Instrument (OKUJI)
- Standard Arrival Chart - Instrument (WAKAH NORTH, SOUMA NORTH-RNAV)
- Standard Arrival Chart - Instrument (WAKAH SOUTH, SOUMA SOUTH-RNAV)
- Instrument Approach Chart (ILS Z or LOC Z RWY01)
- Instrument Approach Chart (ILS Y or LOC Y RWY01)
- Instrument Approach Chart (VOR RWY19)
- Instrument Approach Chart (VOR A)
- Instrument Approach Chart (RNP RWY19)
- Other Chart (Visual REP)
- Other Chart (LDG CHART)
- Other Chart (MVA CHART)

INTENTIONALLY LEFT BLANK

RJSF / FUKUSHIMA

AD CHART

CHANGE : CEILOMETER, WIND SPEED METER added. RVR relocated.



STANDARD DEPARTURE CHART-INSTRUMENT

RJSF / FUKUSHIMA

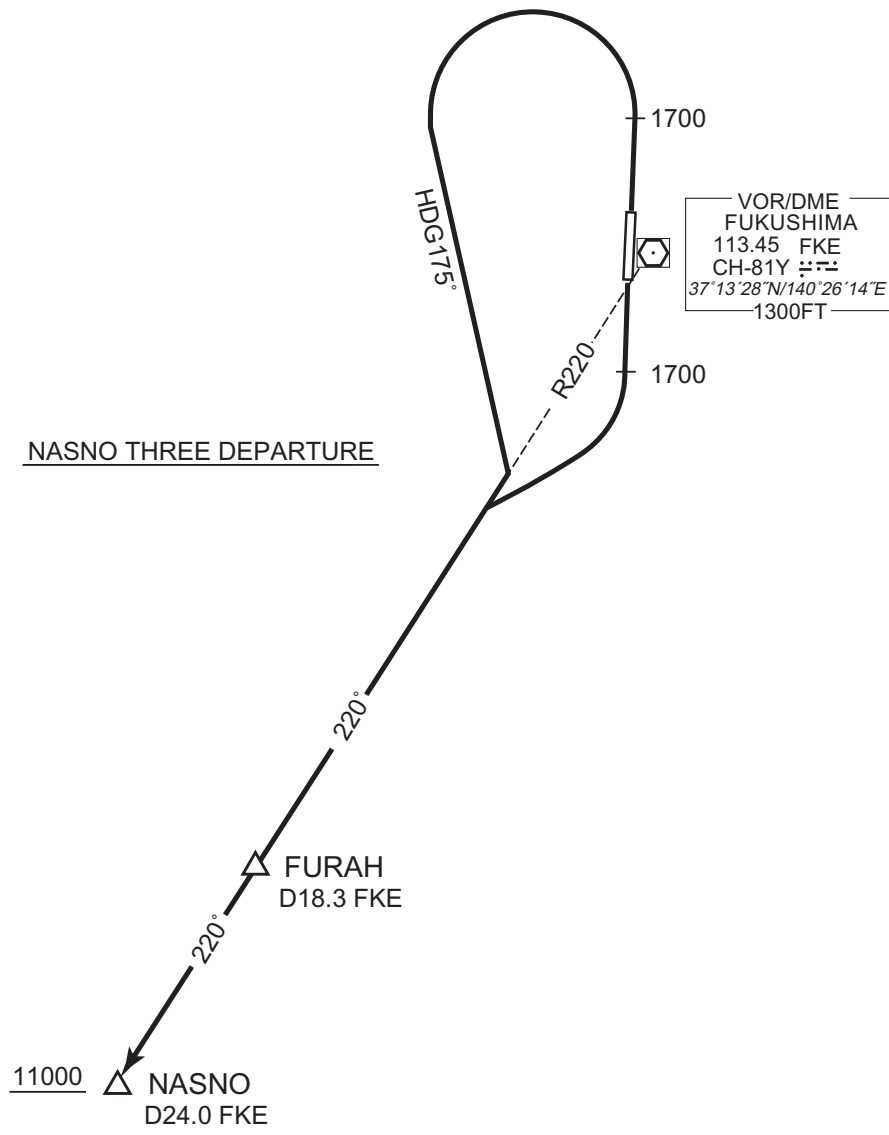
SID

NASNO THREE DEPARTURE

RWY01 : Climb RWY HDG to 1700FT, turn left HDG175°...

RWY19 : Climb RWY HDG to 1700FT, turn right...

...to intercept and proceed via FKE R220 to NASNO via FURAH.
Cross NASNO at or above 11000FT.



CHANGE : PROC renamed. PROC course.

STANDARD DEPARTURE CHART-INSTRUMENT

RJSF / FUKUSHIMA

SID

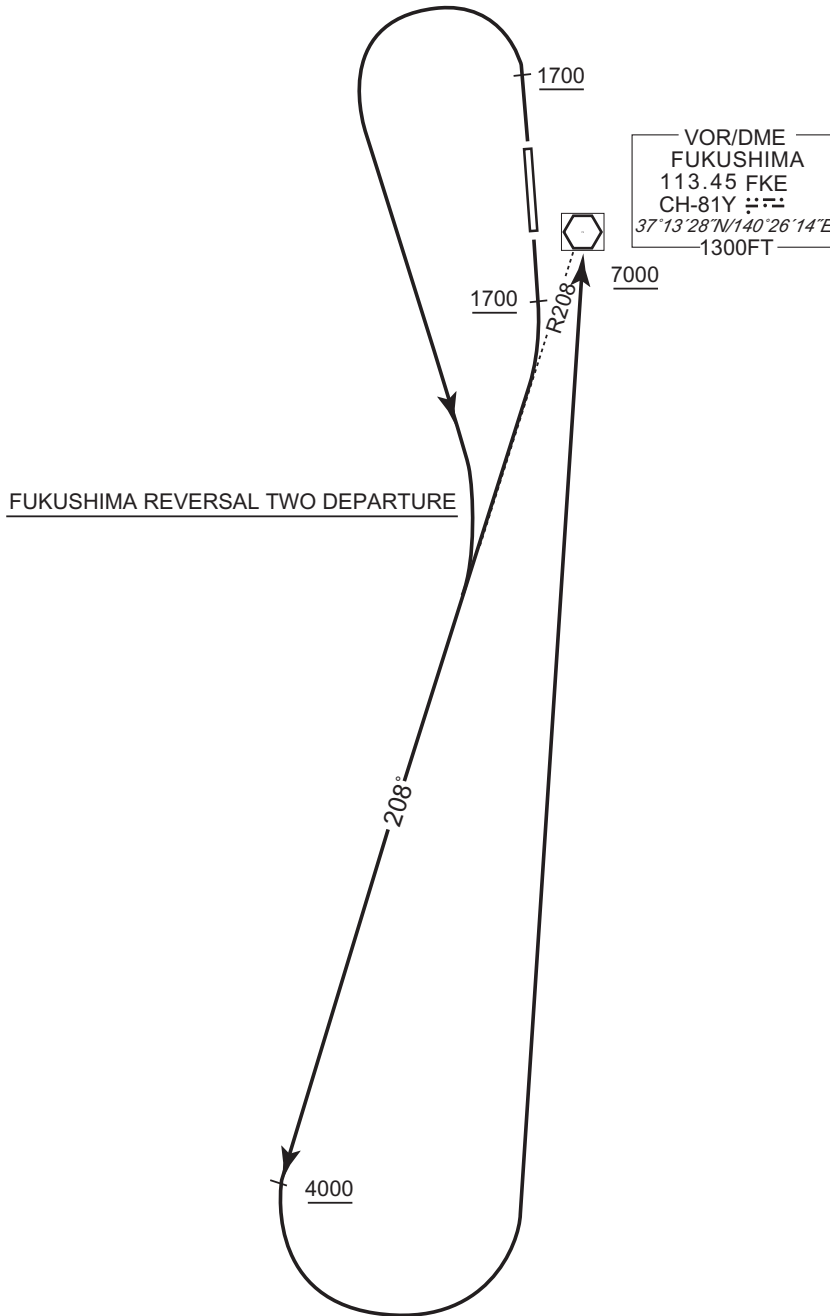
FUKUSHIMA REVERSAL TWO DEPARTURE

RWY 01 : Climb RWY HDG to 1700FT, turn left, ...

RWY 19 : Climb RWY HDG to 1700FT, turn right, ...

... via FKE R208 to 4000FT, turn left, direct to FKE VOR/DME.

Cross FKE VOR/DME at or above 7000FT.



CHANGE : PROC renamed. Radial FM FKE.

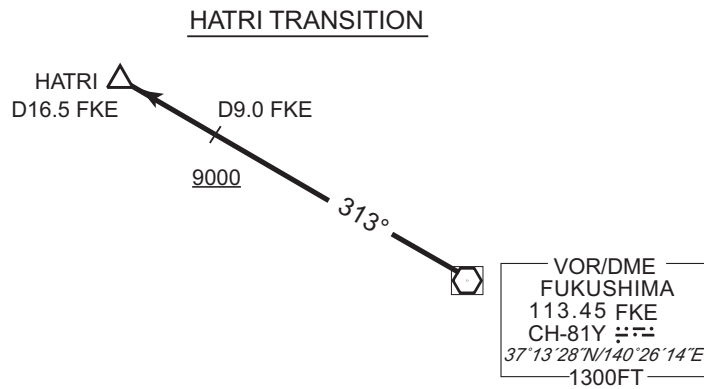
STANDARD DEPARTURE CHART-INSTRUMENT

RJSF / FUKUSHIMA

TRANSITION

HATRI TRANSITION

From over FKE VOR/DME, climb via FKE R313 to HATRI. Cross FKE R313/9.0DME at or above 9000FT.



CHANGE : DME FM FKE added(HATRI).

STANDARD DEPARTURE CHART-INSTRUMENT

RJSF / FUKUSHIMA

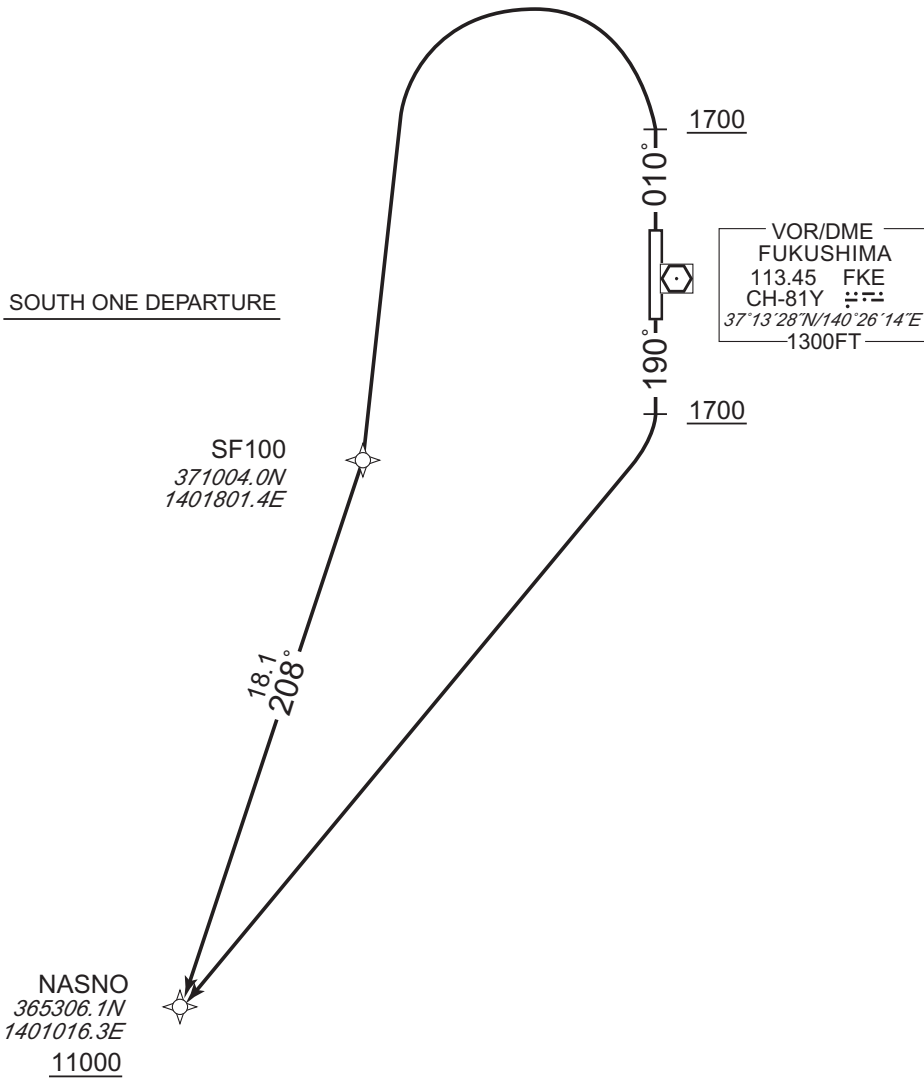
RNAV SID

SOUTH ONE DEPARTURE

RNP1

Note GNSS required.

VAR 8°W (2016)



SOUTH ONE DEPARTURE

RWY01 : Climb on HDG010° at or above 1700FT, turn left direct to SF100, to NASNO at or above 11000FT.

RWY19 : Climb on HDG190° at or above 1700FT, turn right direct to NASNO at or above 11000FT.

CHANGE : Navigation Specification(Basic RNP1 → RNP1).

STANDARD DEPARTURE CHART-INSTRUMENT

RJSF / FUKUSHIMA

RNAV SID

SOUTH ONE DEPARTURE

RWY01

Serial Number	Path Descriptor	Waypoint Identifier	Fly Over	Course °M(°T)	Magnetic Variation	Distance (NM)	Turn Direction	Altitude (FT)	Speed (KIAS)	Vertical Angle	Navigation Specification
001	VA	-	-	010 (002.2)	-7.8	-	-	+1700	-	-	RNP1
002	DF	SF100	-	-	-7.8	-	L	-	-	-	RNP1
003	TF	NASNO	-	208 (200.1)	-7.8	18.1	-	+11000	-	-	RNP1

RWY19

Serial Number	Path Descriptor	Waypoint Identifier	Fly Over	Course °M(°T)	Magnetic Variation	Distance (NM)	Turn Direction	Altitude (FT)	Speed (KIAS)	Vertical Angle	Navigation Specification
001	VA	-	-	190 (182.2)	-7.8	-	-	+1700	-	-	RNP1
002	DF	NASNO	-	-	-7.8	-	R	+11000	-	-	RNP1

CHANGE : Navigation Specification(Basic RNP1 → RNP1).

STANDARD DEPARTURE CHART-INSTRUMENT

RJSF / FUKUSHIMA

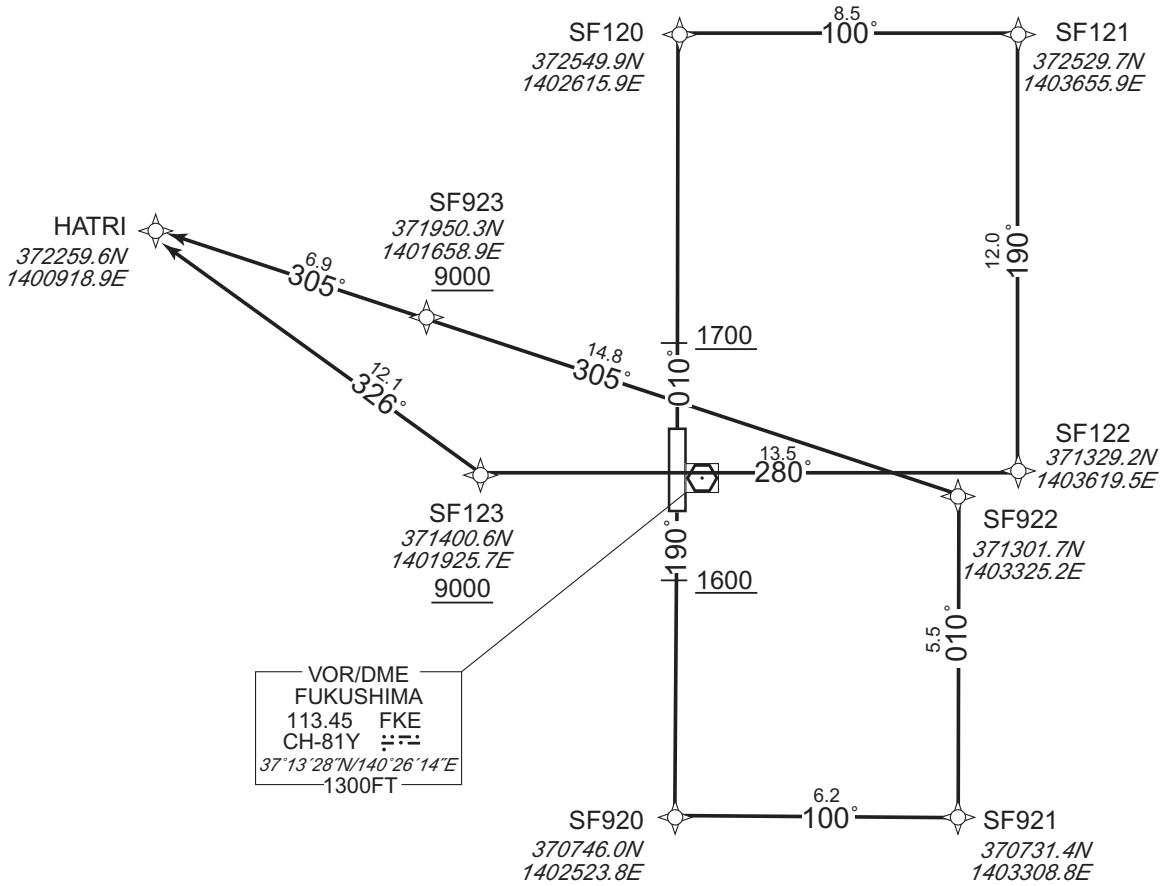
RNAV SID

WEST ONE DEPARTURE	RNP1
--------------------	------

Note GNSS required.

VAR 8°W (2016)

WEST ONE DEPARTURE



WEST ONE DEPARTURE

RWY01 : Climb on HDG010° at or above 1700FT, direct to SF120, to SF121, to SF122, to SF123 at or above 9000FT, to HATRI.

RWY19 : Climb on HDG190° at or above 1600FT, direct to SF920, to SF921, to SF922, to SF923 at or above 9000FT, to HATRI.

Note RWY19 : 3.9% climb gradient required up to 2800FT.

OBST ALT 2577FT located at 7.1NM 144° FM end of RWY19.

CHANGE : Navigation Specification(Basic RNP1 → RNP1).

STANDARD DEPARTURE CHART-INSTRUMENT

RJSF / FUKUSHIMA

RNAV SID

WEST ONE DEPARTURE

RWY01

Serial Number	Path Descriptor	Waypoint Identifier	Fly Over	Course °M(°T)	Magnetic Variation	Distance (NM)	Turn Direction	Altitude (FT)	Speed (KIAS)	Vertical Angle	Navigation Specification
001	VA	-	-	010 (002.2)	-7.8	-	-	+1700	-	-	RNP1
002	DF	SF120	-	-	-7.8	-	-	-	-	-	RNP1
003	TF	SF121	-	100 (092.2)	-7.8	8.5	-	-	-	-	RNP1
004	TF	SF122	-	190 (182.3)	-7.8	12.0	-	-	-	-	RNP1
005	TF	SF123	-	280 (272.3)	-7.8	13.5	-	+9000	-	-	RNP1
006	TF	HATRI	-	326 (318.2)	-7.8	12.1	-	-	-	-	RNP1

RWY19

Serial Number	Path Descriptor	Waypoint Identifier	Fly Over	Course °M(°T)	Magnetic Variation	Distance (NM)	Turn Direction	Altitude (FT)	Speed (KIAS)	Vertical Angle	Navigation Specification
001	VA	-	-	190 (182.2)	-7.8	-	-	+1600	-	-	RNP1
002	DF	SF920	-	-	-7.8	-	-	-	-	-	RNP1
003	TF	SF921	-	100 (092.2)	-7.8	6.2	-	-	-	-	RNP1
004	TF	SF922	-	010 (002.3)	-7.8	5.5	-	-	-	-	RNP1
005	TF	SF923	-	305 (297.6)	-7.8	14.8	-	+9000	-	-	RNP1
006	TF	HATRI	-	305 (297.4)	-7.8	6.9	-	-	-	-	RNP1

CHANGE : Navigation Specification(Basic RNP1 → RNP1).

STANDARD ARRIVAL CHART-INSTRUMENT

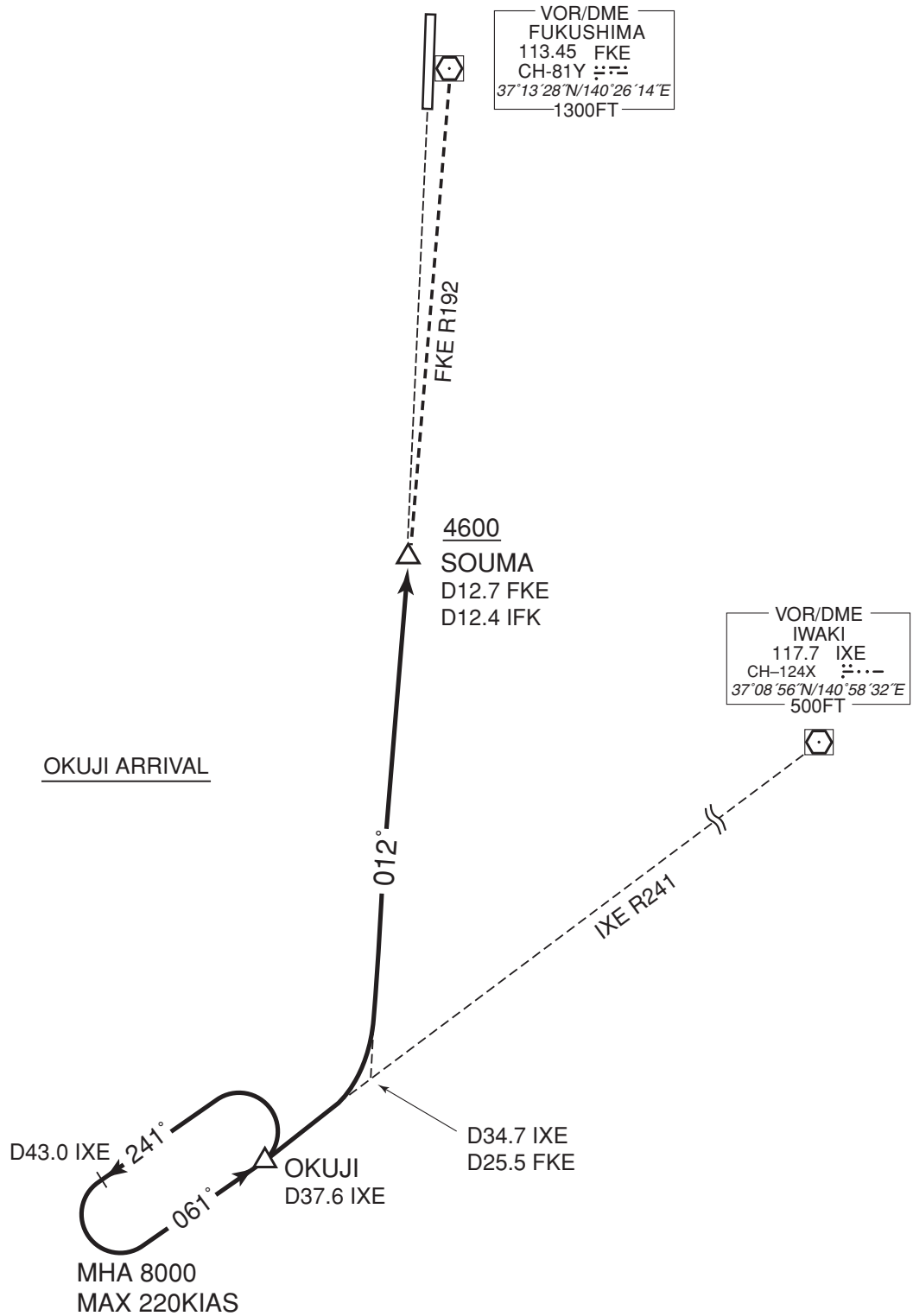
RJSF / FUKUSHIMA

STAR

OKUJI ARRIVAL

From over OKUJI, via IXE R241 to intercept and proceed via FKE R192 to SOUMA.
 Cross SOUMA at or above 4600FT.

CHANGE : BRG for OKUJI HLDG Pattern, Radial FM IXE to OKUJI



STANDARD ARRIVAL CHART-INSTRUMENT

RJSF / FUKUSHIMA

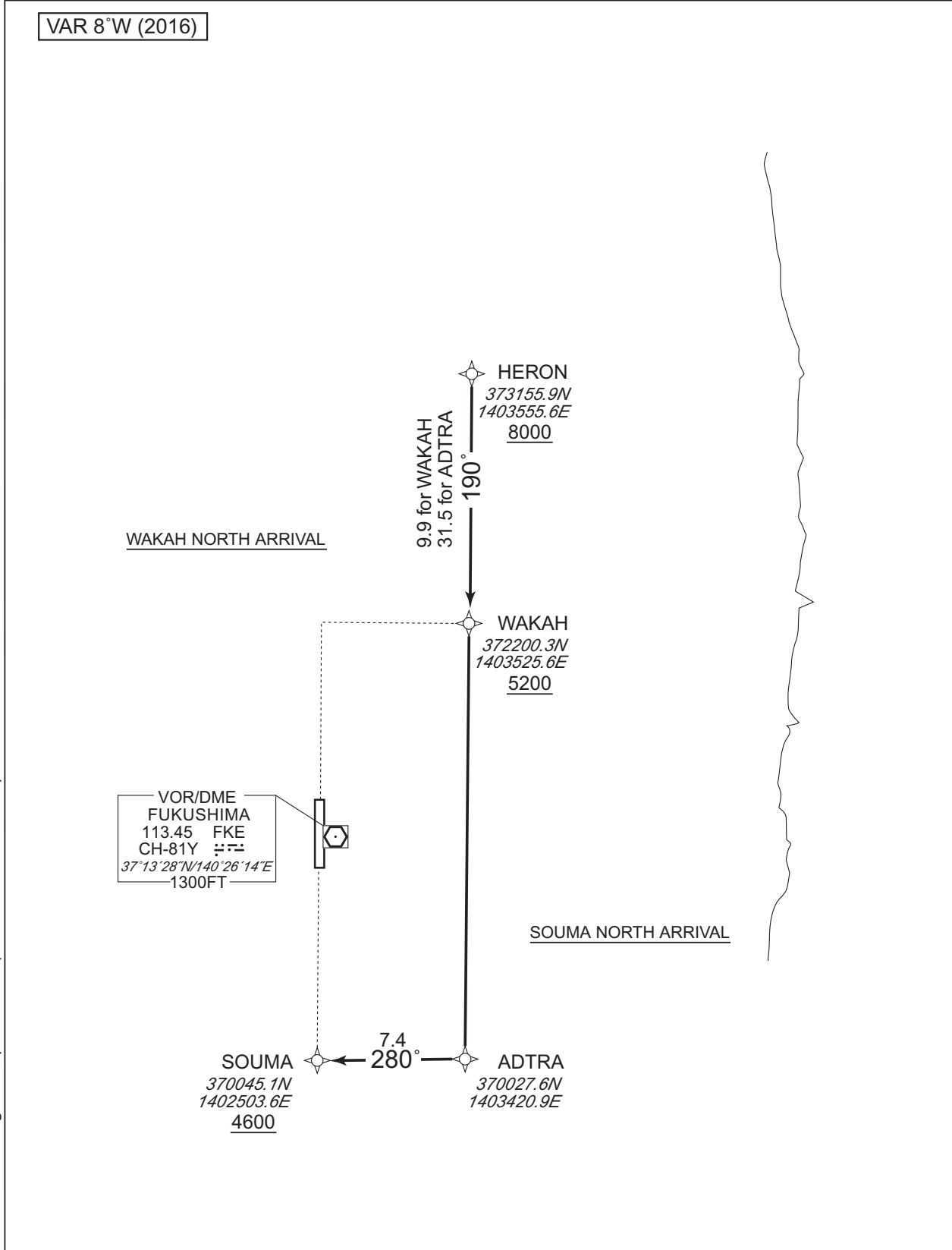
RNAV STAR RWY01/19

WAKAH NORTH ARRIVAL SOUMA NORTH ARRIVAL	RNP1
--	------

Note GNSS required.

VAR 8°W (2016)

CHANGE : Navigation Specification(Basic RNP1 → RNP1).



STANDARD ARRIVAL CHART-INSTRUMENT

RJSF / FUKUSHIMA

RNAV STAR RWY01/19

WAKAH NORTH ARRIVAL

From HERON at or above 8000FT, to WAKAH at or above 5200FT.

Serial Number	Path Descriptor	Waypoint Identifier	Fly Over	Course °M(°T)	Magnetic Variation	Distance (NM)	Turn Direction	Altitude (FT)	Speed (KIAS)	Vertical Angle	Navigation Specification
001	IF	HERON	-	-	-7.8	-	-	+8000	-	-	RNP1
002	TF	WAKAH	-	190 (182.3)	-7.8	9.9	-	+5200	-	-	RNP1

SOUMA NORTH ARRIVAL

From HERON at or above 8000FT, to ADTRA, to SOUMA at or above 4600FT.

Serial Number	Path Descriptor	Waypoint Identifier	Fly Over	Course °M(°T)	Magnetic Variation	Distance (NM)	Turn Direction	Altitude (FT)	Speed (KIAS)	Vertical Angle	Navigation Specification
001	IF	HERON	-	-	-7.8	-	-	+8000	-	-	RNP1
002	TF	ADTRA	-	190 (182.3)	-7.8	31.5	-	-	-	-	RNP1
003	TF	SOUMA	-	280 (272.3)	-7.8	7.4	-	+4600	-	-	RNP1

CHANGE : Navigation Specification(Basic RNP1 → RNP1).

STANDARD ARRIVAL CHART-INSTRUMENT

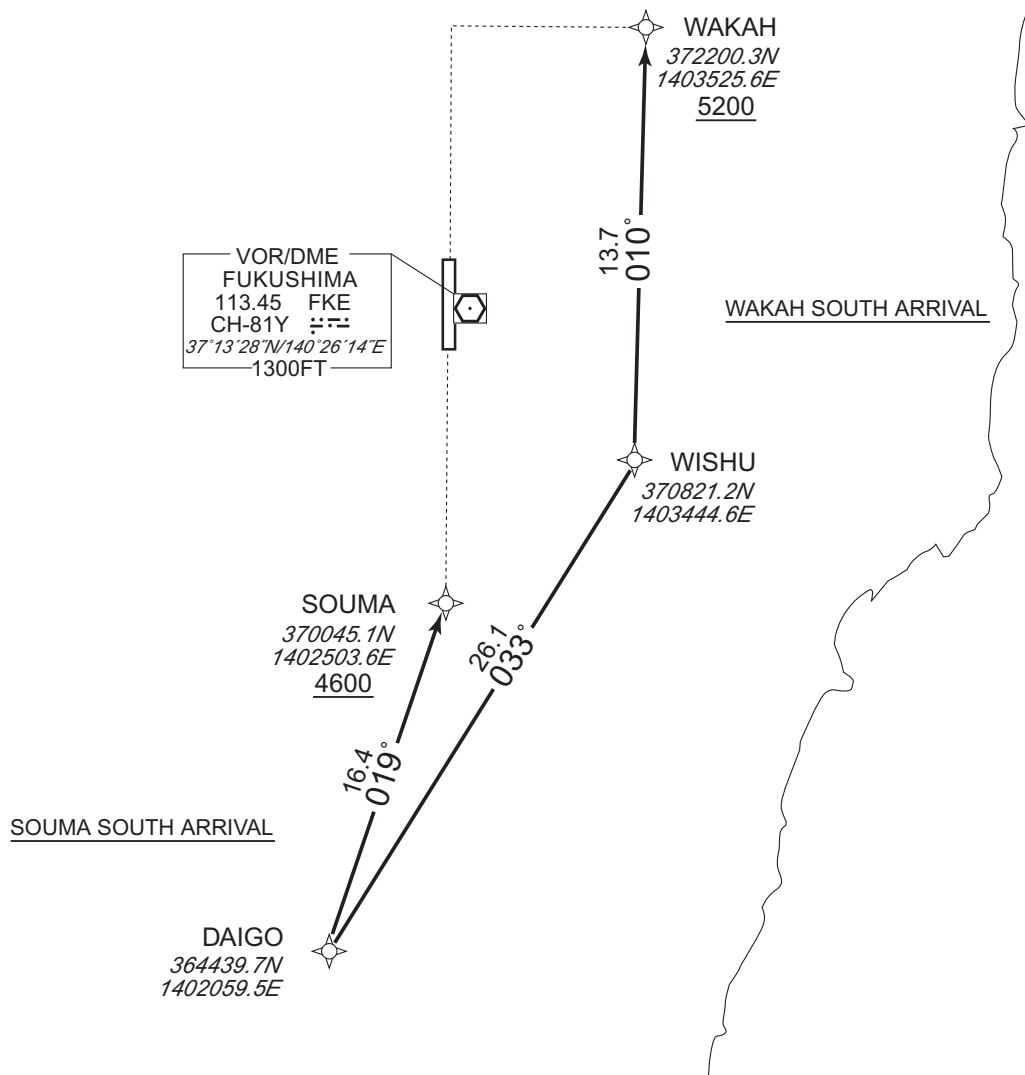
RJSF / FUKUSHIMA

RNAV STAR RWY01/19

WAKAH SOUTH ARRIVAL SOUMA SOUTH ARRIVAL	RNP1
--	------

Note GNSS required.

VAR 8°W (2016)



CHANGE : Navigation Specification(Basic RNP1 → RNP1).

STANDARD ARRIVAL CHART-INSTRUMENT

RJSF / FUKUSHIMA

RNAV STAR RWY01/19

WAKAH SOUTH ARRIVAL

From DAIGO, to WISHU, to WAKAH at or above 5200FT.

Serial Number	Path Descriptor	Waypoint Identifier	Fly Over	Course °M(°T)	Magnetic Variation	Distance (NM)	Turn Direction	Altitude (FT)	Speed (KIAS)	Vertical Angle	Navigation Specification
001	IF	DAIGO	-	-	-7.8	-	-	-	-	-	RNP1
002	TF	WISHU	-	033 (024.8)	-7.8	26.1	-	-	-	-	RNP1
003	TF	WAKAH	-	010 (002.3)	-7.8	13.7	-	+5200	-	-	RNP1

SOUMA SOUTH ARRIVAL

From DAIGO, to SOUMA at or above 4600FT.

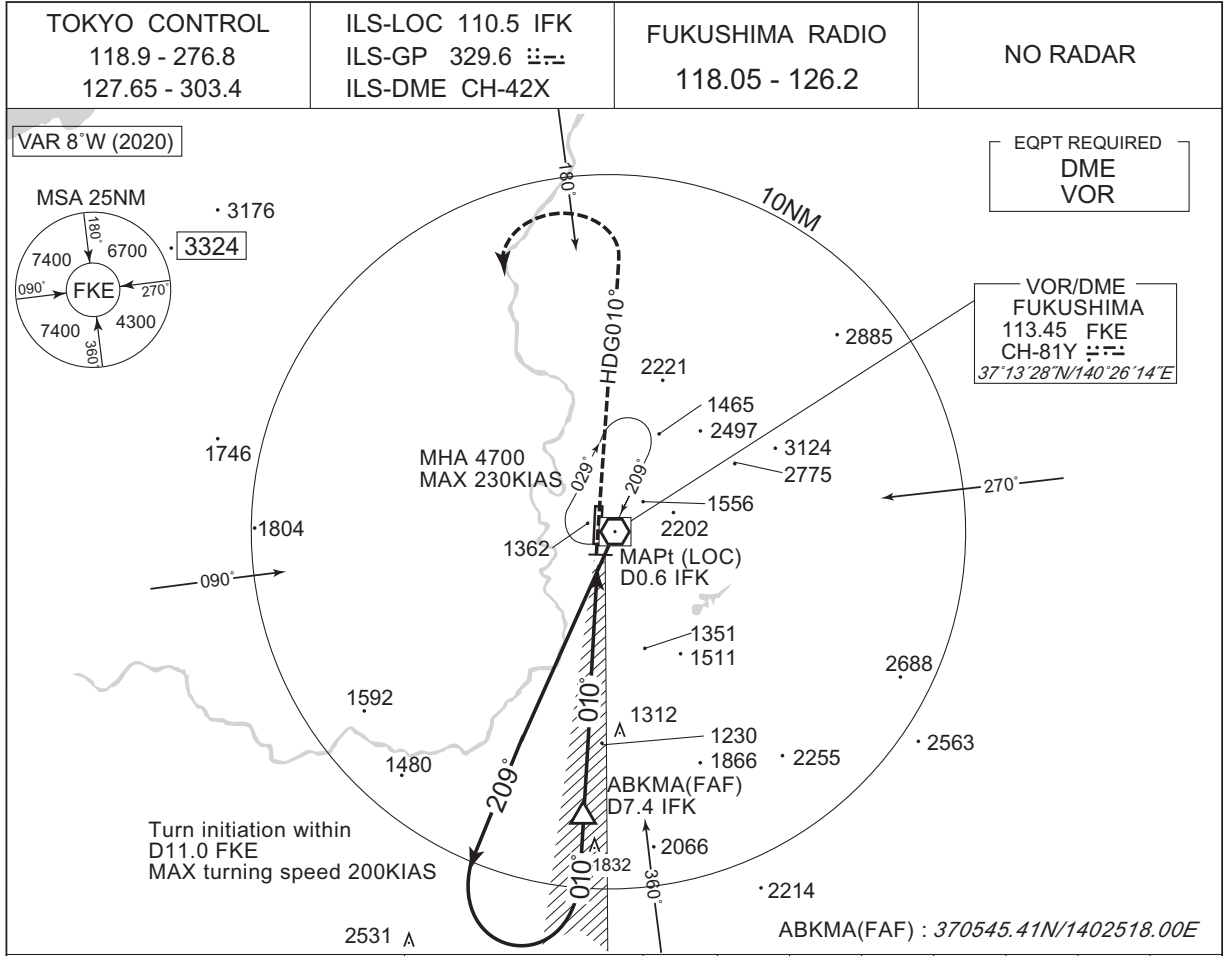
Serial Number	Path Descriptor	Waypoint Identifier	Fly Over	Course °M(°T)	Magnetic Variation	Distance (NM)	Turn Direction	Altitude (FT)	Speed (KIAS)	Vertical Angle	Navigation Specification
001	IF	DAIGO	-	-	-7.8	-	-	-	-	-	RNP1
002	TF	SOUMA	-	019 (011.4)	-7.8	16.4	-	+4600	-	-	RNP1

CHANGE : Navigation Specification(Basic RNP1 → RNP1).

INSTRUMENT APPROACH CHART

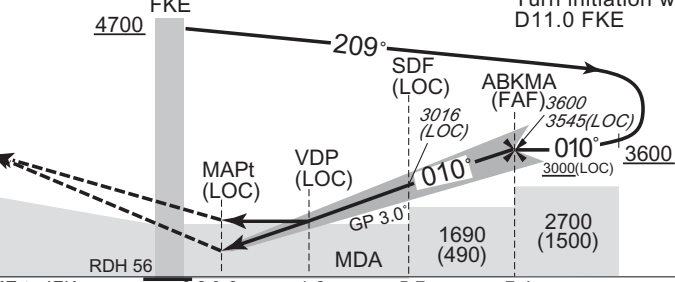
RJSF / FUKUSHIMA

ILS Z or LOC Z RWY01



CHANGE : FREQ for TOKYO CONTROL.

MISSED APPROACH
Climb to 3000FT on HDG010°,
turn left, direct to FKE VOR/DME
and hold at 4700FT.
Contact FUKUSHIMA RADIO.
Timing not authorized for defining the MAPt.



DME to IFK	0.2	0.6	1.2	5.7	7.4
NM to THR	0	0.5	1.1	5.5	7.2

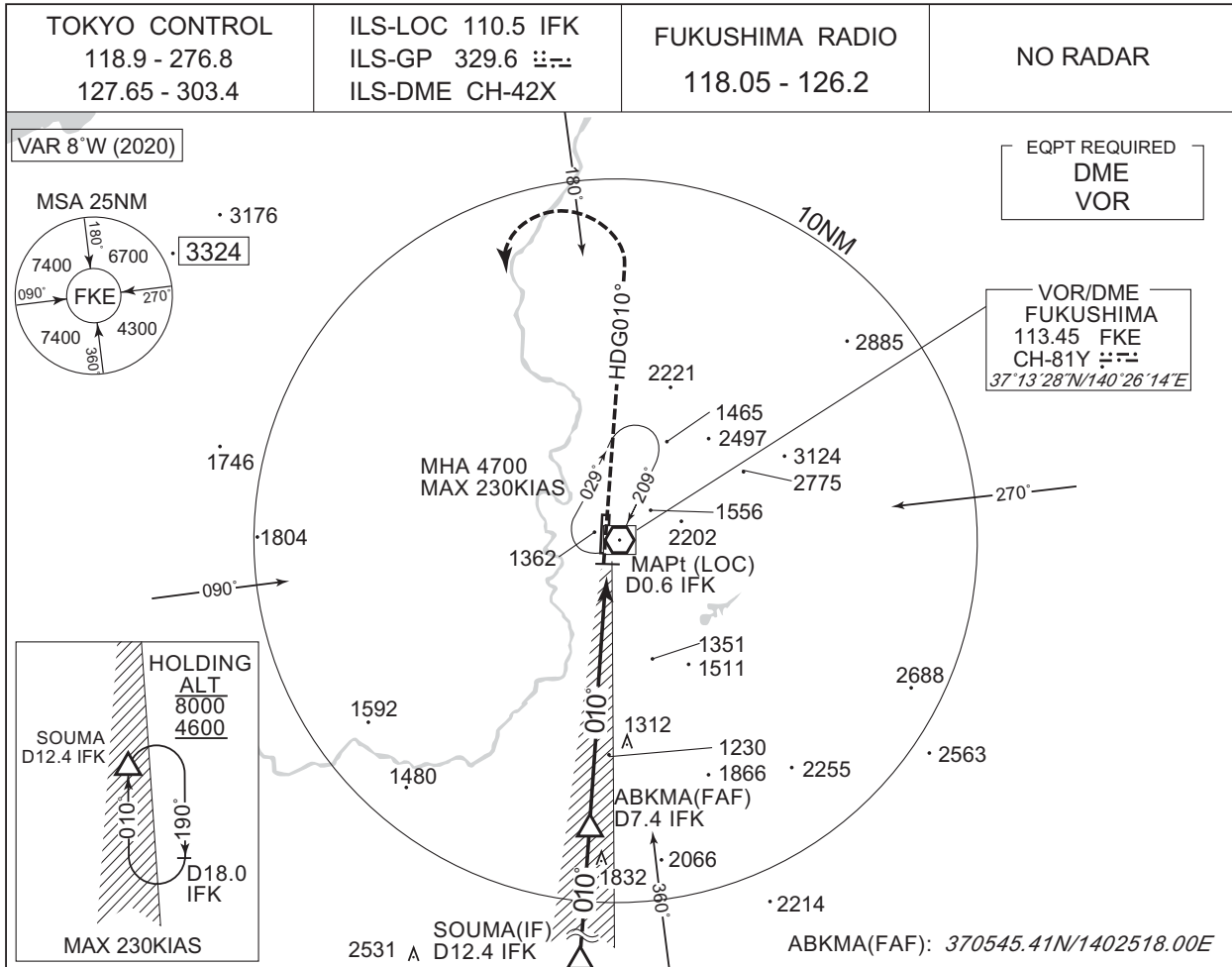
Missed APCH climb gradient MNM 4.0%						
MINIMA			THR elev. 1200 AD elev. 1220			
CAT	CAT I		LOC		CIRCLING	
	DA(H)	RVR/CMV	MDA(H)	RVR/CMV	MDA(H) VIS	
A	1400 (200)	550	1560 (360)	900	1670(450) 1600	
B				1000		
C				1400		2400
D				1770(550)		3200

MINIMA with Missed APCH climb gradient of 2.5% are not established.
Circling to WEST side of RWY only.

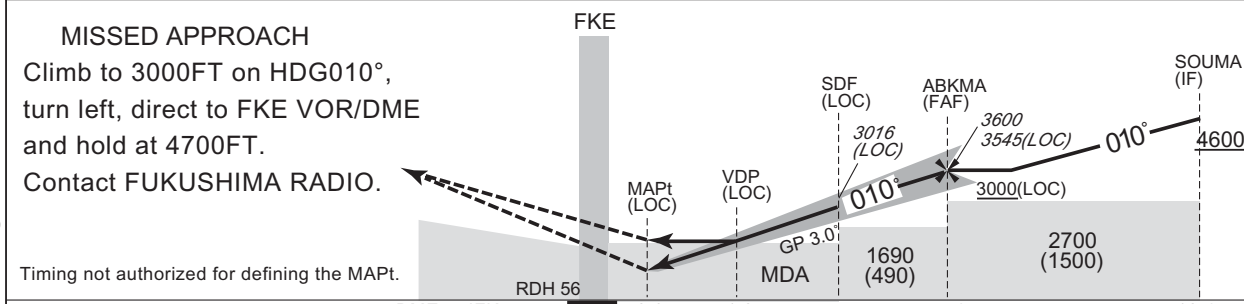
INSTRUMENT APPROACH CHART

RJSF / FUKUSHIMA

ILS Y or LOC Y RWY01



	NM to IFK	MAPt	2	3	4	5	6	7	FAF
	ALT(3.0° APCH Path)	-	1837	2156	2474	2793	3111	3430	3545



	DME to IFK	0.2	0.6	1.2	5.7	7.4	12.4
	NM to THR	0	0.5	1.1	5.5	7.2	12.2

Missed APCH climb gradient MNM 4.0%

MINIMA		THR elev. 1200		AD elev. 1220			
CAT	CAT I		LOC		CIRCLING		
	DA(H)	RVR/CMV	MDA(H)	RVR/CMV	MDA(H)	VIS	
A	1400 (200)	550	1560 (360)	1000	1670(450)	1600	
B							
C							2400
D							1400

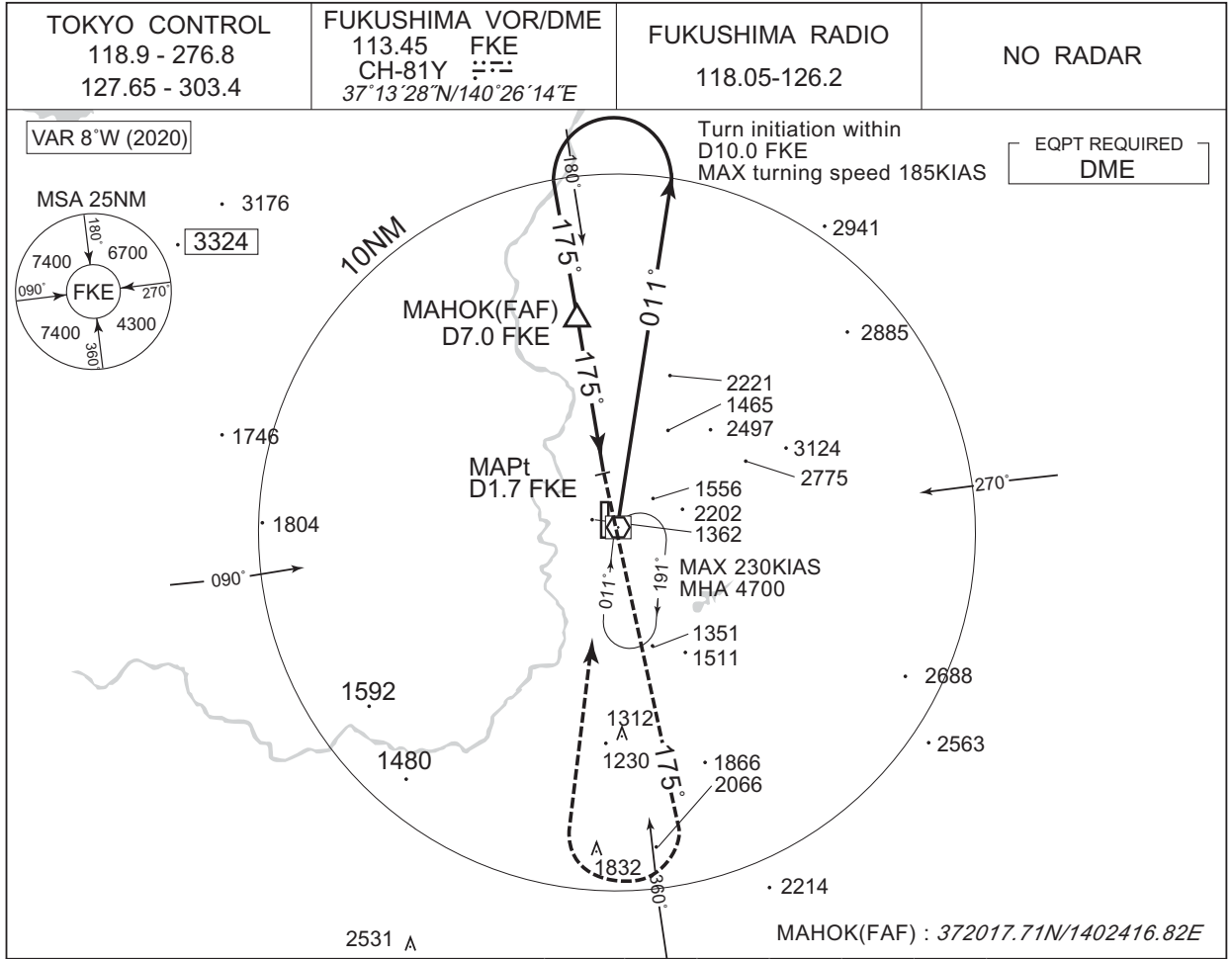
MINIMA with Missed APCH climb gradient of 2.5% are not established.
Circling to WEST side of RWY only.

CHANGE : FREQ for TOKYO CONTROL.

INSTRUMENT APPROACH CHART

RJSF / FUKUSHIMA

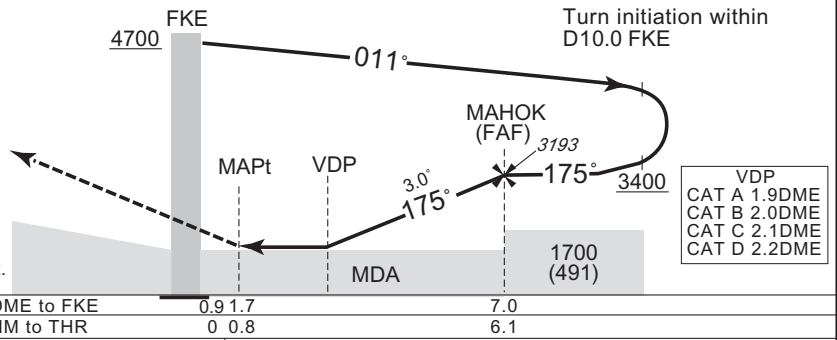
VOR RWY19



CHANGE : FREQ for TOKYO CONTROL.

MISSED APPROACH
 Climb to 3000FT via FKE
 R175, turn right,
 direct to FKE VOR/DME
 and hold at 4700FT.
 Contact FUKUSHIMA RADIO.

* Timing not authorized for defining the MAPt.



MINIMA	THR elev. 1209	AD elev. 1220		
CAT			CIRCLING	
	MDA(H)	CMV	MDA(H)	VIS
A	1550 (341)	1200	1670(450)	1600
B	1590 (381)	1300		2400
C	1620 (411)	1400	1770(550)	3200
D	1640 (431)	1600		

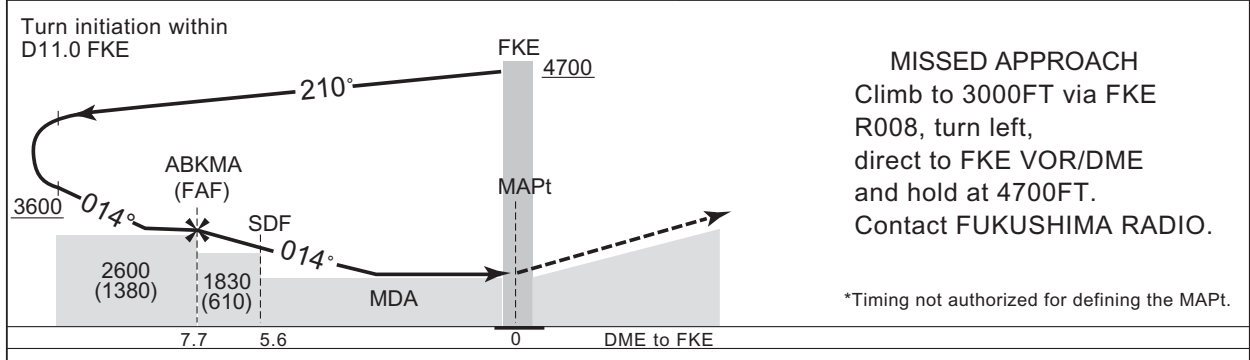
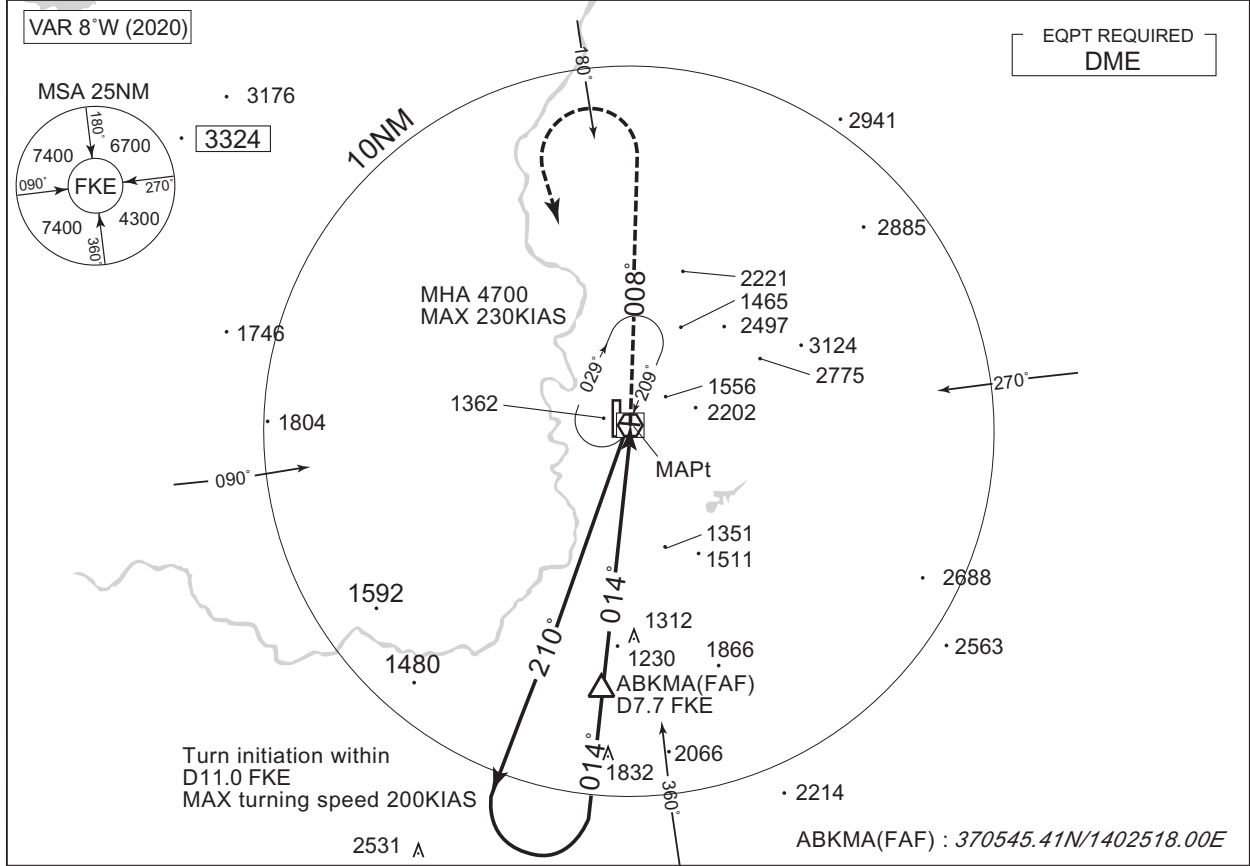
Circling to WEST side of RWY only.

INSTRUMENT APPROACH CHART

RJSF / FUKUSHIMA

VOR A

TOKYO CONTROL 118.9 - 276.8 127.65 - 303.4	FUKUSHIMA VOR/DME 113.45 FKE CH-81Y 37°13'28"N/140°26'14"E	FUKUSHIMA RADIO 118.05 - 126.2	NO RADAR
--	---	-----------------------------------	----------



CHANGE : FREQ for TOKYO CONTROL.

MINIMA		AD elev. 1220	
CAT	CIRCLING		VIS
	MDA(H)		
A	1680 (460)		1600
B	1770 (550)		2400
C			3200
D			

Circling to WEST side of RWY only.

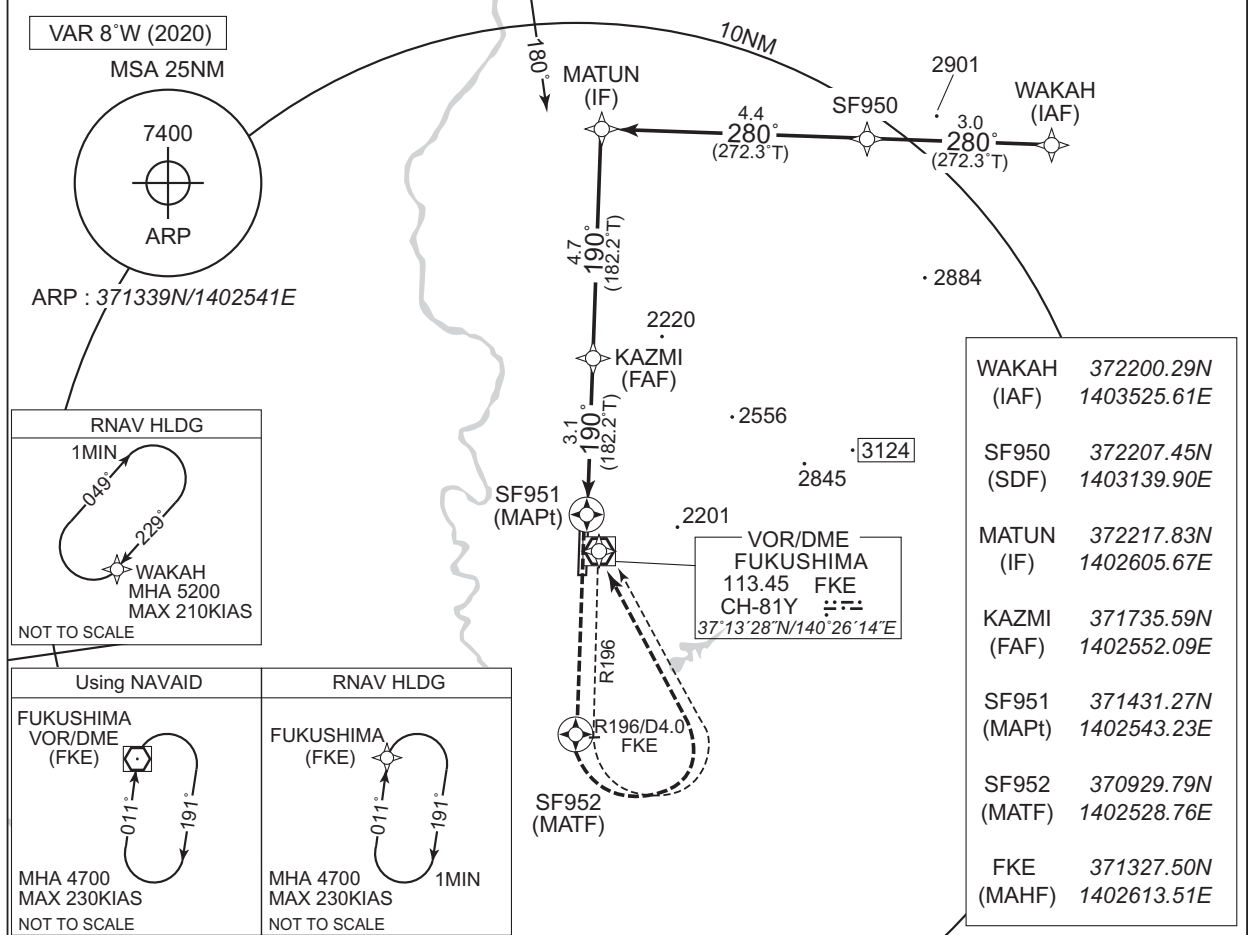
INSTRUMENT APPROACH CHART

RJSF / FUKUSHIMA

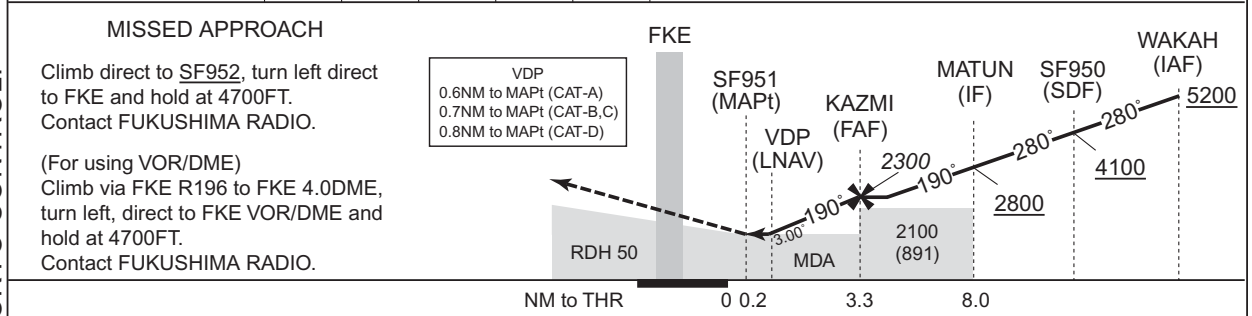
RNP RWY19

TOKYO CONTROL 118.9 - 276.8 127.65 - 303.4	RNP APCH	FUKUSHIMA RADIO 118.05 - 126.2	NO RADAR
--	----------	-----------------------------------	----------

Baro-VNAV not authorized below -15°C



NM to Next Fix	MAPt	1	2	3	FAF
ALT(3.0° APCH Path)	-	1641	1959	2278	2300



Missed APCH climb gradient MNM 3.0%

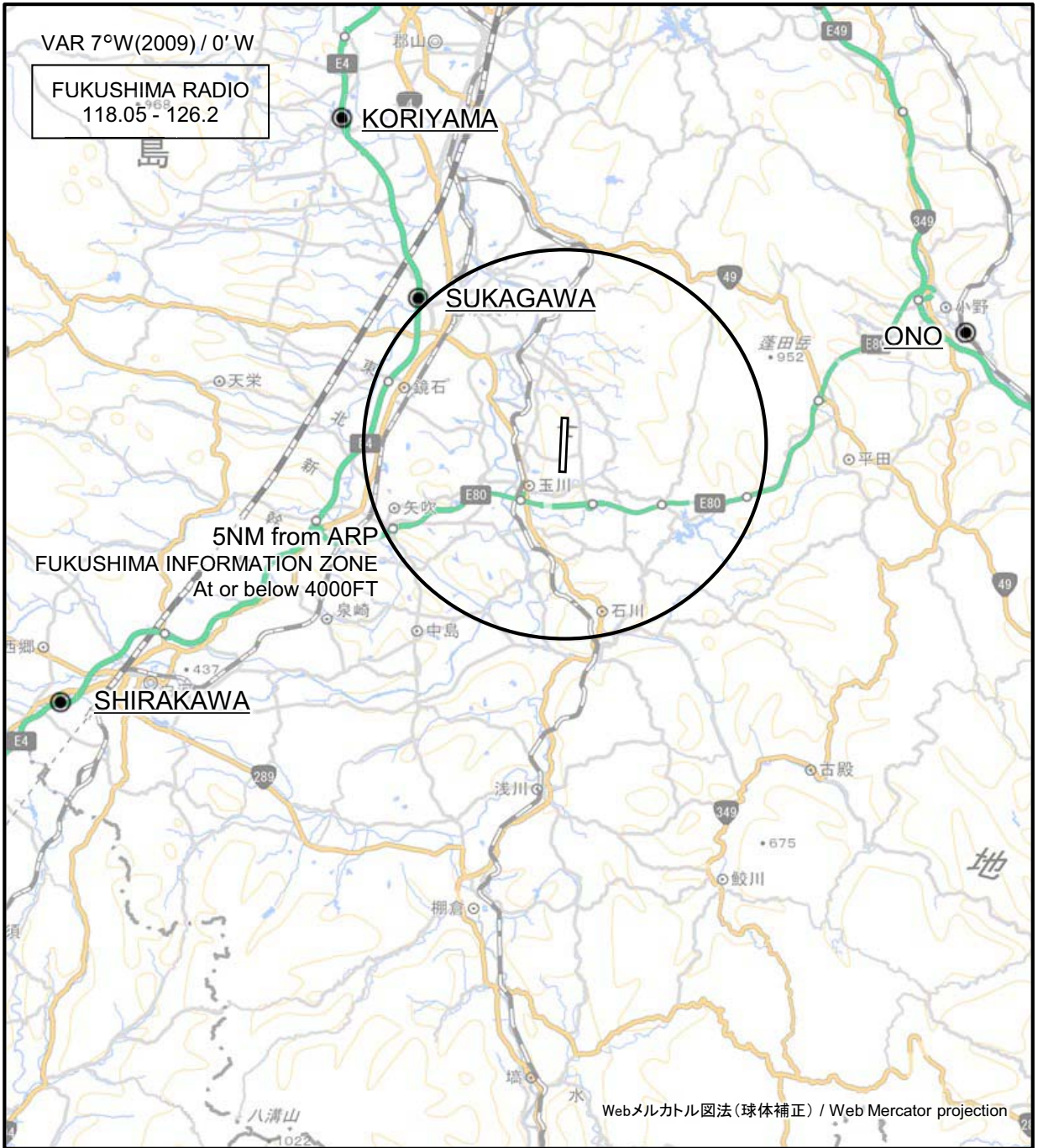
CAT	THR elev. 1209		AD elev. 1220		MDA(H)	VIS
	LNAV/VNAV	LNAV	LNAV	CIRCLING		
A	1520 (311)	1200	1520 (311)	1200	1670 (450)	1600
B	1540 (331)	1300	1540 (331)	1300		
C	1560 (351)	1400	1560 (351)	1400	1770 (550)	2400
D	1580 (371)	1600	1580 (371)	1600		

MINIMA with Missed APCH climb gradient of 2.5% are not established.
Circling to WEST side of RWY only.

CHANGE : FREQ for TOKYO CONTROL.

RJSF / FUKUSHIMA

Visual REP



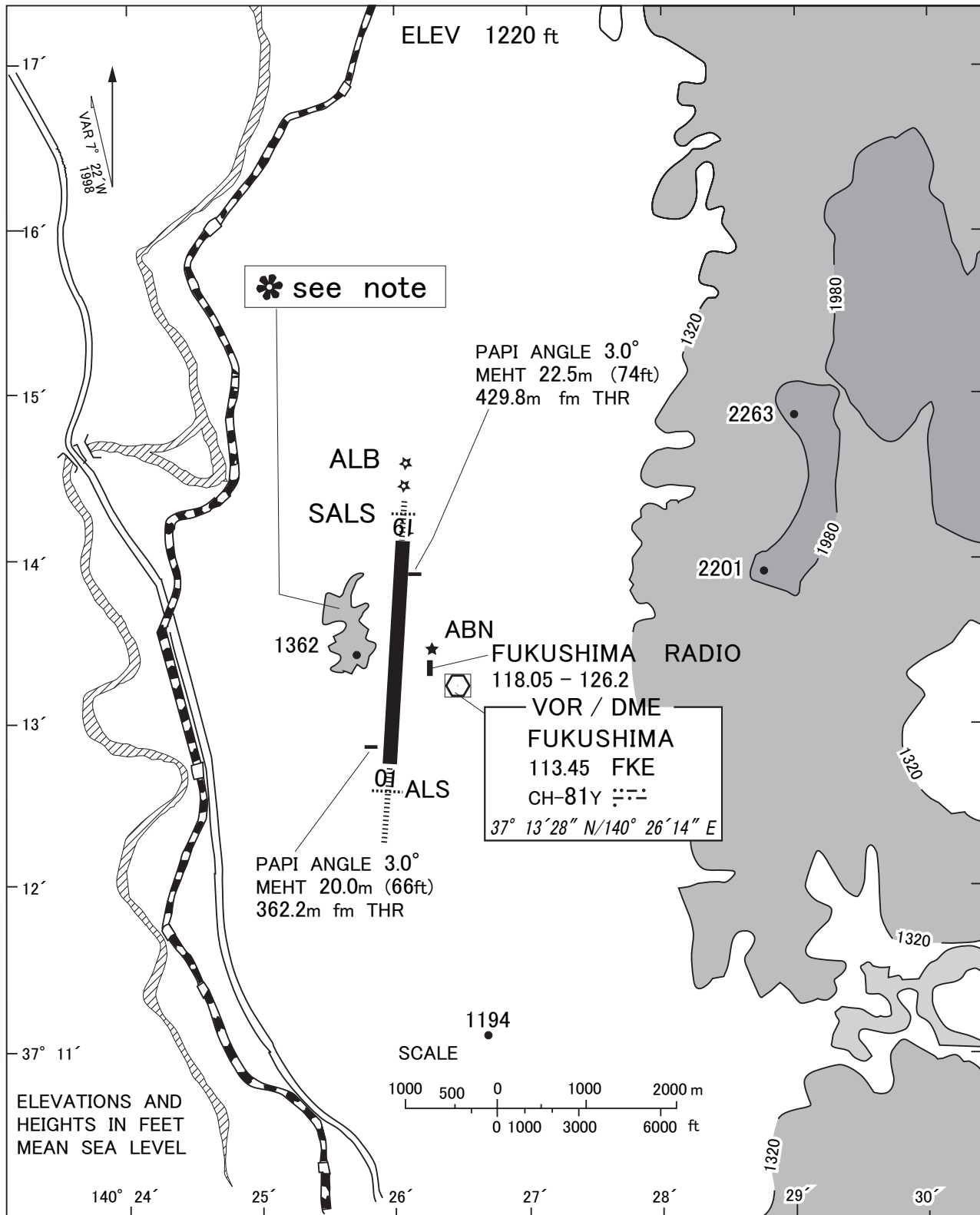
CHANGE : Map updated. BRG/DIST from ARP.

※図中に標高を示す数字がある場合、単位はメートル(m)である。The unit of measurement used to express elevation is meter(m).

Call sign	BRG / DIST from ARP	Remarks
郡山 Koriyama	326°T / 10.1NM	郡山南IC Interchange
須賀川 Sukagawa	316°T / 5.3NM	須賀川IC Interchange
小野 Ono	074°T / 10.4NM	JR小野新町駅 Station
白河 Shirakawa	242°T / 14.3NM	白河IC Interchange

RJSF / FUKUSHIMA

LDG CHART



Note : RWY may be invisible on down-wind leg of westside traffic pattern depending on altitude.

RJSF / FUKUSHIMA

Minimum Vectoring Altitude CHART

CHANGE : Shape of Minimum Vectoring Altitude.

