

STANDARD DEPARTURE CHART -INSTRUMENT

RJSI / HANAMAKI

SID

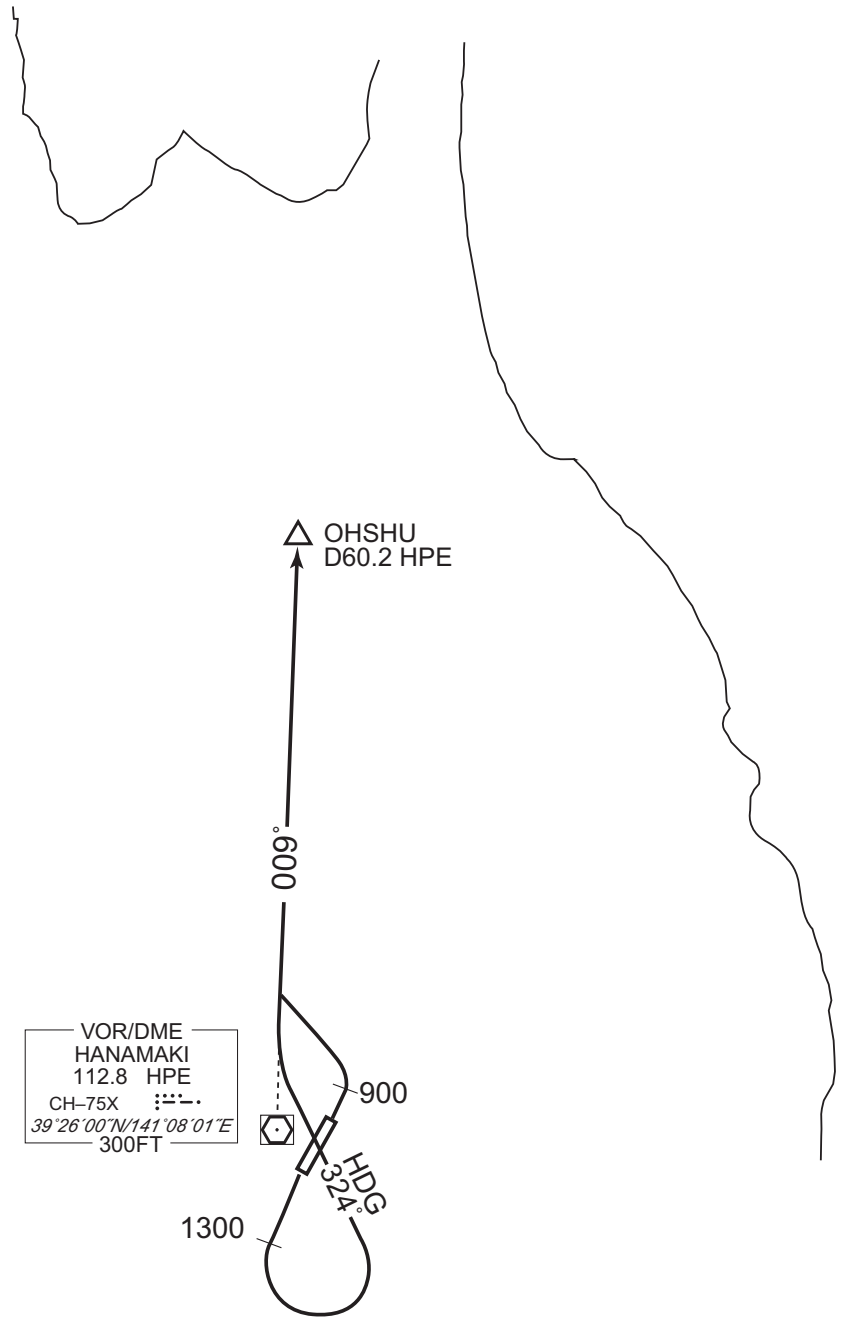
OHSU ONE DEPARTURE

RWY 02 : Climb RWY HDG to 900FT, turn left...

RWY 20 : Climb RWY HDG to 1300FT, turn left HDG 324°...

...to intercept and proceed via HPE R009 to OHSU.

CHANGE : Description of PROC name.



STANDARD DEPARTURE CHART -INSTRUMENT

RJSI / HANAMAKI

SID

NIIGATA FIVE DEPARTURE

RWY 02 : Climb RWY HDG to HPE 3.5 DME, turn right...

RWY 20 : Climb RWY HDG to HPE 3.5 DME, turn left...

...proceed to HPE VOR/DME, via HPE R236 to HPE 50.0DME(GTC 79.6DME),
via GTC R055 to GTC.

Cross HPE VOR/DME at or above 2200 FT, cross HPE R236/50.0DME
(GTC R055/79.6DME) at or above 11000 FT.

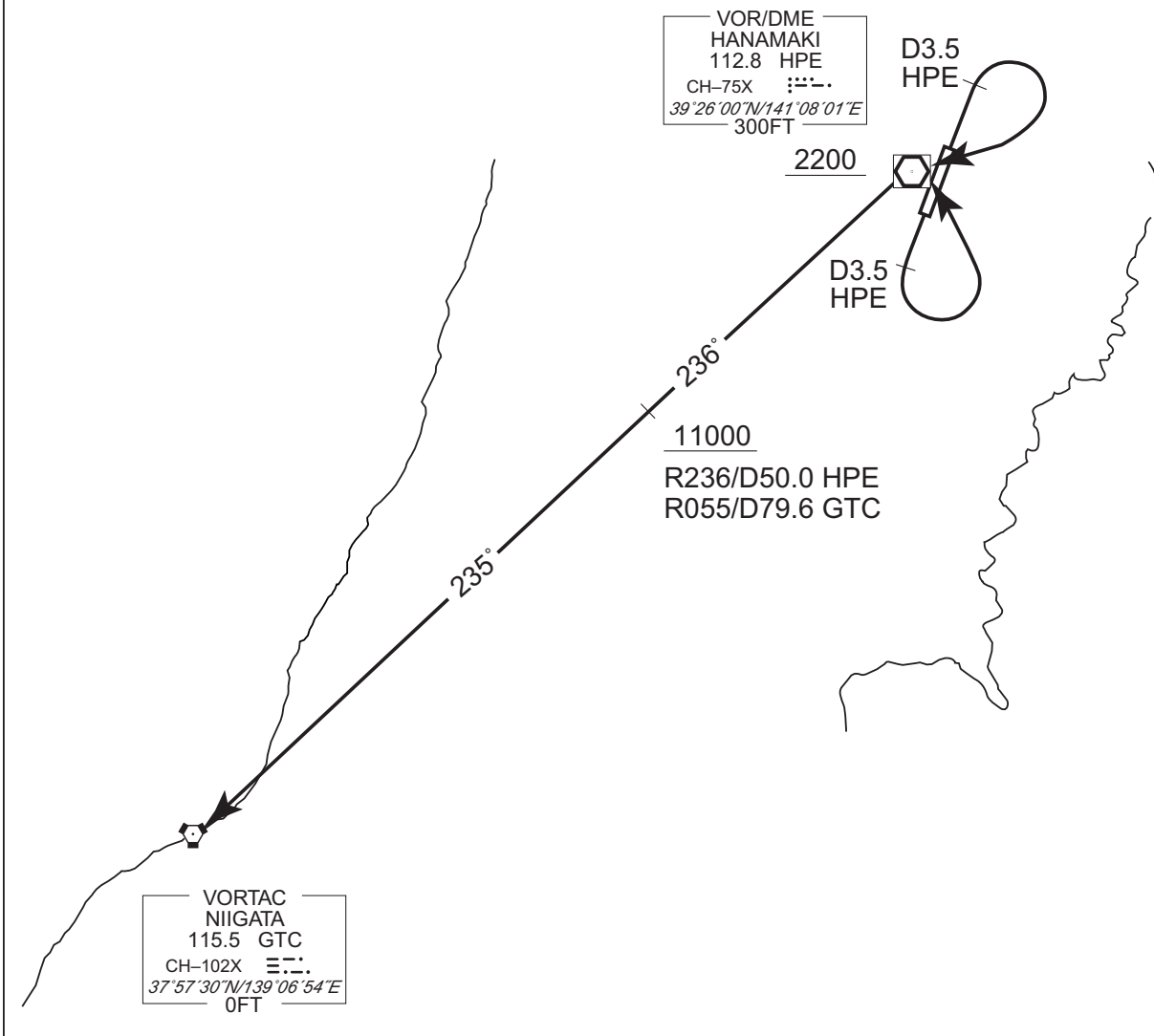
Note RWY02 : 4.5% climb gradient required up to 2400FT.

OBST ALT 1641FT located at 4.1NM 091° FM end of RWY02.

RWY20 : 3.9% climb gradient required up to 1100FT.

OBST ALT 722FT located at 2.8NM 166° FM end of RWY20.

CHANGE : PROC renamed. PROC course. ALT restriction.



STANDARD DEPARTURE CHART -INSTRUMENT

RJSI / HANAMAKI

SID

HANAMAKI REVERSAL TWO DEPARTURE

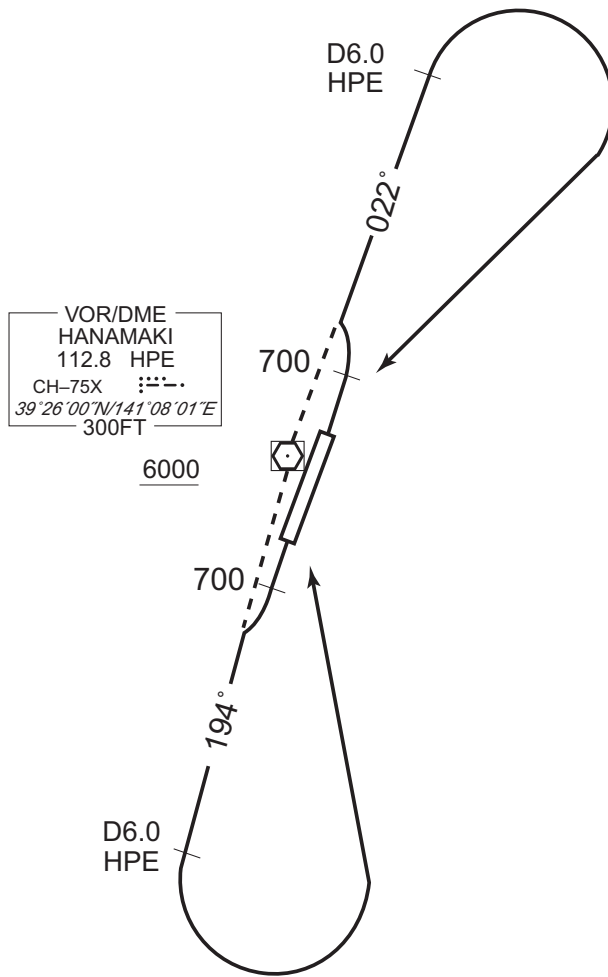
RWY 02 : Climb RWY HDG to 700FT, via HPE R022 to 6.0 DME, turn right...

RWY 20 : Climb RWY HDG to 700FT, via HPE R194 to 6.0 DME, turn left...
...proceed to HPE VOR/DME.

Cross HPE VOR/DME at or above 6000FT.

Note RWY02 : 5.0% climb gradient required up to 3200FT.

OBST ALT 2691FT located at 9.1NM 058° FM end of RWY02.



CHANGE : Description of PROC name.

STANDARD DEPARTURE CHART -INSTRUMENT

RJSI / HANAMAKI

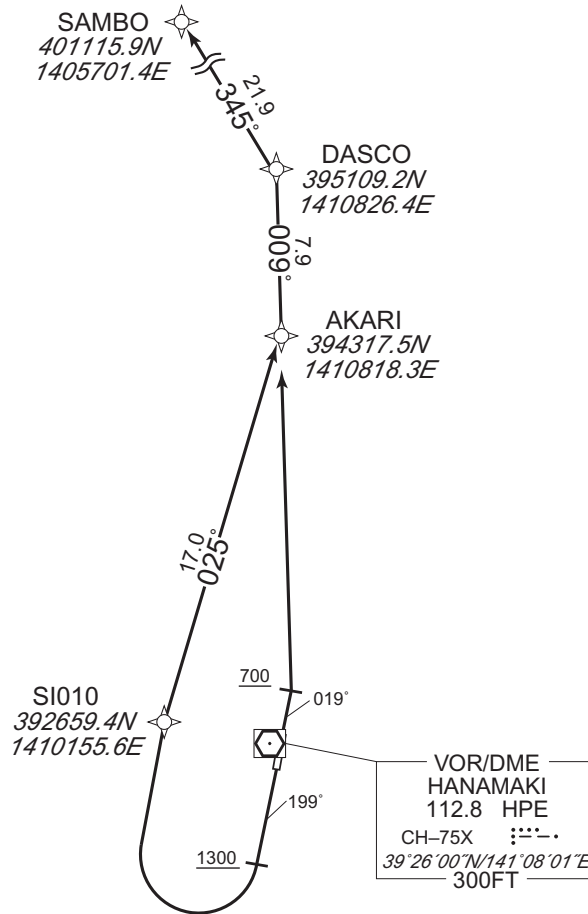
RNAV SID

SAMBO ONE DEPARTURE

RNP1

Note GNSS required.

VAR 9°W



RWY02 : Climb on HDG 019° at or above 700FT, direct to AKARI, to DASCO to SAMBO.

RWY20 : Climb on HDG 199° at or above 1300FT, turn right direct to SI010, to AKARI, to DASCO to SAMBO .

Note RWY02 : 4.0% climb gradient required up to 700FT.

OBST ALT 318FT located at 0.2NM 061° FM end of RWY02.

RWY20 : 4.0% climb gradient required up to 2700FT.

OBST ALT 3117FT located at 10.7NM 351° FM end of RWY20.

RWY02

| Serial Number | Path Descriptor | Waypoint Identifier | Fly Over | Course M(T) | Magnetic Variation | Distance (NM) | Turn Direction | Altitude (FT) | Speed (KIAS) | Vertical Angle | Navigation Specification |
|---------------|-----------------|---------------------|----------|----------------|--------------------|---------------|----------------|---------------|--------------|----------------|--------------------------|
| 001 | VA | - | - | 019 (010.7) | -8.7 | - | - | +700 | - | - | RNP1 |
| 002 | DF | AKARI | - | - | -8.7 | - | - | - | - | - | RNP1 |
| 003 | TF | DASCO | - | 009 (000.8) | -8.7 | 7.9 | - | - | - | - | RNP1 |
| 004 | TF | SAMBO | - | 345 (336.6) | -8.7 | 21.9 | - | - | - | - | RNP1 |

RWY20

| Serial Number | Path Descriptor | Waypoint Identifier | Fly Over | Course M(T) | Magnetic Variation | Distance (NM) | Turn Direction | Altitude (FT) | Speed (KIAS) | Vertical Angle | Navigation Specification |
|---------------|-----------------|---------------------|----------|----------------|--------------------|---------------|----------------|---------------|--------------|----------------|--------------------------|
| 001 | VA | - | - | 199 (190.7) | -8.7 | - | - | +1300 | - | - | RNP1 |
| 002 | DF | SI010 | - | - | -8.7 | - | R | - | - | - | RNP1 |
| 003 | TF | AKARI | - | 025 (016.7) | -8.7 | 17.0 | - | - | - | - | RNP1 |
| 004 | TF | DASCO | - | 009 (000.8) | -8.7 | 7.9 | - | - | - | - | RNP1 |
| 005 | TF | SAMBO | - | 345 (336.6) | -8.7 | 21.9 | - | - | - | - | RNP1 |

CHANGE : Navigation Specification(Basic RNP1 → RNP1).

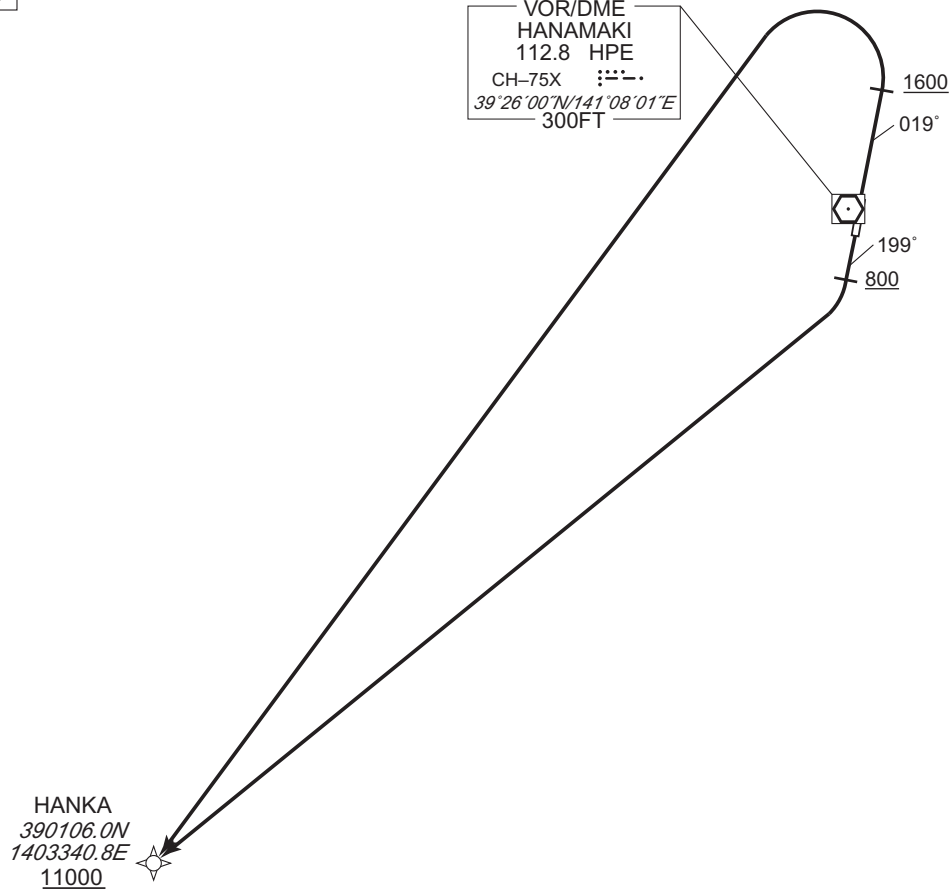
STANDARD DEPARTURE CHART -INSTRUMENT

RJSI / HANAMAKI RNAV SID

HANKA ONE DEPARTURE RNP1

Note GNSS required

VAR 9°W



RWY02 : Climb on HDG 019° at or above 1600FT, turn left direct to HANKA, at or above 11000FT.
 RWY20 : Climb on HDG 199° at or above 800FT, turn right direct to HANKA, at or above 11000FT.

Note RWY02: 5.0% climb gradient required up to 3600FT.
 OBST ALT 1936FT located at 5.5NM 340° FM end of RWY02.
 OBST ALT 3018FT located at 8.2NM 310° FM end of RWY02.
 RWY20: 5.0% climb gradient required up to 5400FT.
 OBST ALT 4593FT located at 18.2NM 227° FM end of RWY20.
 OBST ALT 5151FT located at 20.8NM 232° FM end of RWY20.

CHANGE : Navigation Specification(Basic RNP1 → RNP1).

RWY02

| Serial Number | Path Descriptor | Waypoint Identifier | Fly Over | Course °M(°T) | Magnetic Variation | Distance (NM) | Turn Direction | Altitude (FT) | Speed (KIAS) | Vertical Angle | Navigation Specification |
|---------------|-----------------|---------------------|----------|----------------|--------------------|---------------|----------------|---------------|--------------|----------------|--------------------------|
| 001 | VA | - | - | 019 (010.7) | -8.7 | - | - | +1600 | - | - | RNP1 |
| 002 | DF | HANKA | - | - | -8.7 | - | L | +11000 | - | - | RNP1 |

RWY20

| Serial Number | Path Descriptor | Waypoint Identifier | Fly Over | Course °M(°T) | Magnetic Variation | Distance (NM) | Turn Direction | Altitude (FT) | Speed (KIAS) | Vertical Angle | Navigation Specification |
|---------------|-----------------|---------------------|----------|----------------|--------------------|---------------|----------------|---------------|--------------|----------------|--------------------------|
| 001 | VA | - | - | 199 (190.7) | -8.7 | - | - | +800 | - | - | RNP1 |
| 002 | DF | HANKA | - | - | -8.7 | - | R | +11000 | - | - | RNP1 |

INTENTIONALLY LEFT BLANK

STANDARD ARRIVAL CHART - INSTRUMENT

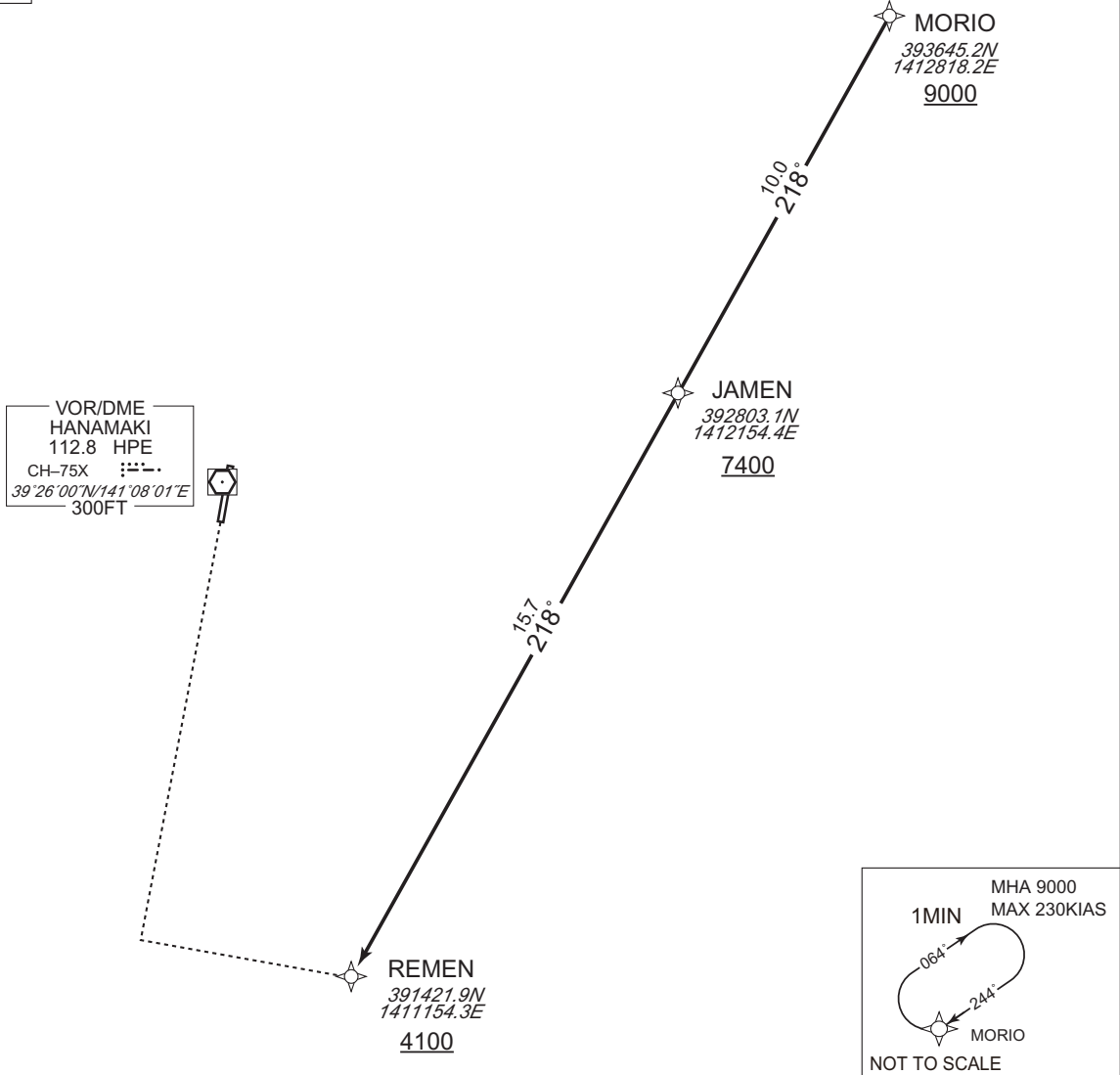
RJSI / HANAMAKI RNAV STAR RWY02

REMEN ARRIVAL

RNP1

Note GNSS required

VAR 9°W



CHANGE : Navigation Specification(Basic RNP1 → RNP1).

From MORIO at or above 9000FT, to JAMEN at or above 7400FT, to REMEN at or above 4100FT.

| Serial Number | Path Descriptor | Waypoint Identifier | Fly Over | Course °M(°T) | Magnetic Variation | Distance (NM) | Turn Direction | Altitude (FT) | Speed (KIAS) | Vertical Angle | Navigation Specification |
|---------------|-----------------|---------------------|----------|----------------|--------------------|---------------|----------------|---------------|--------------|----------------|--------------------------|
| 001 | IF | MORIO | — | — | -8.8 | — | — | +9000 | — | — | RNP1 |
| 002 | TF | JAMEN | — | 218 (209.6) | -8.8 | 10.0 | — | +7400 | — | — | RNP1 |
| 003 | TF | REMEN | — | 218 (209.5) | -8.8 | 15.7 | — | +4100 | — | — | RNP1 |

| Path | Waypoint Identifier | Inbound Course °M(°T) | Magnetic Variation | Outbound Time (MIN) | Turn Direction | Minimum Altitude (FT) | Maximum Altitude (FT) | Speed (KIAS) | Navigation Specification |
|------|---------------------|-----------------------|--------------------|---------------------|----------------|-----------------------|-----------------------|--------------|--------------------------|
| Hold | MORIO | 244 (235.7) | -8.8 | 1.0(-14000) | R | 9000 | FL140 | -230(-14000) | RNP1 |

STANDARD ARRIVAL CHART - INSTRUMENT

RJSI / HANAMAKI

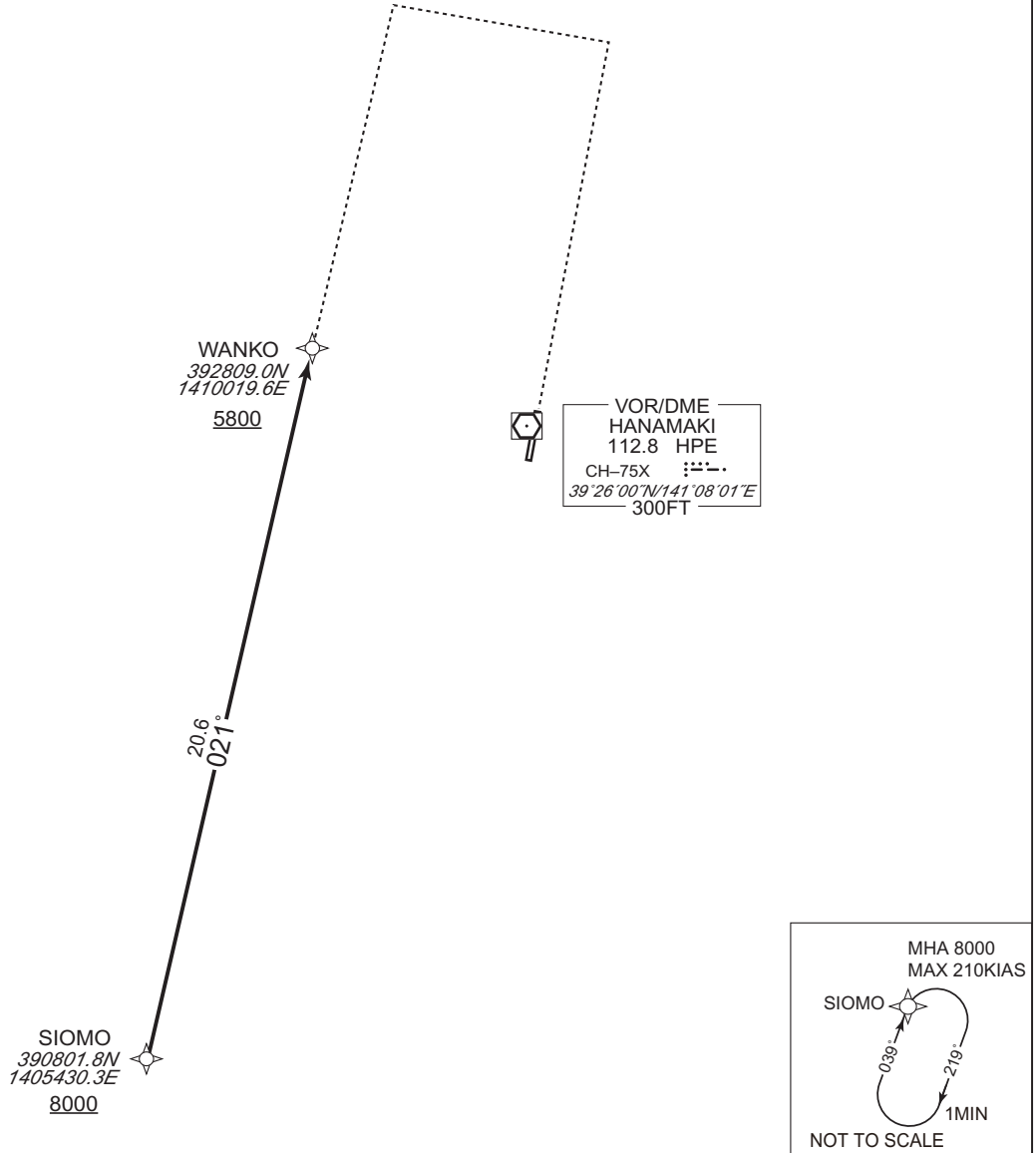
RNAV STAR RWY20

WANKO ARRIVAL

RNP1

Note GNSS required

VAR 9°W



From SIOMO at or above 8000FT, to WANKO at or above 5800FT.

| Serial Number | Path Descriptor | Waypoint Identifier | Fly Over | Course °M(°T) | Magnetic Variation | Distance (NM) | Turn Direction | Altitude (FT) | Speed (KIAS) | Vertical Angle | Navigation Specification |
|---------------|-----------------|---------------------|----------|----------------|--------------------|---------------|----------------|---------------|--------------|----------------|--------------------------|
| 001 | IF | SIOMO | - | - | -8.8 | - | - | +8000 | - | - | RNP1 |
| 002 | TF | WANKO | - | 021 (012.6) | -8.8 | 20.6 | - | +5800 | - | - | RNP1 |

| Path | Waypoint Identifier | Inbound Course °M(°T) | Magnetic Variation | Outbound Time (MIN) | Turn Direction | Minimum Altitude (FT) | Maximum Altitude (FT) | Speed (KIAS) | Navigation Specification |
|------|---------------------|-----------------------|--------------------|---------------------|----------------|-----------------------|-----------------------|--------------|--------------------------|
| Hold | SIOMO | 039 (030.1) | -8.8 | 1.0(-14000) | R | 8000 | FL140 | -210(-14000) | RNP1 |

CHANGE : Navigation Specification(Basic RNP1 → RNP1).

STANDARD ARRIVAL CHART - INSTRUMENT

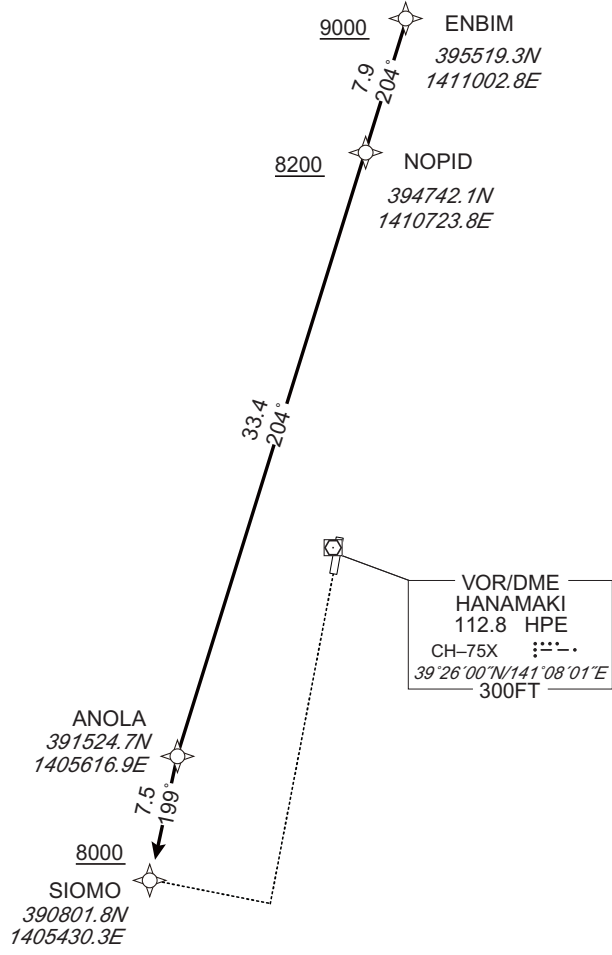
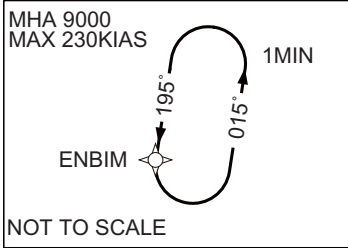
RJSI / HANAMAKI RNAV STAR RWY02

SIOMO ARRIVAL

RNP1

Note GNSS required.

VAR 9°W



CHANGE : Navigation Specification(Basic RNP1 → RNP1).

From ENBIM at or above 9000FT, to NOPID at or above 8200FT, to ANOLA, to SIOMO at or above 8000FT.

| Serial Number | Path Descriptor | Waypoint Identifier | Fly Over | Course °M(°T) | Magnetic Variation | Distance (NM) | Turn Direction | Altitude (FT) | Speed (KIAS) | Vertical Angle | Navigation Specification |
|---------------|-----------------|---------------------|----------|----------------|--------------------|---------------|----------------|---------------|--------------|----------------|--------------------------|
| 001 | IF | ENBIM | - | - | -8.8 | - | - | +9000 | - | - | RNP1 |
| 002 | TF | NOPID | - | 204 (195.0) | -8.8 | 7.9 | - | +8200 | - | - | RNP1 |
| 003 | TF | ANOLA | - | 204 (194.9) | -8.8 | 33.4 | - | - | - | - | RNP1 |
| 004 | TF | SIOMO | - | 199 (190.6) | -8.8 | 7.5 | - | +8000 | - | - | RNP1 |

| Path | Waypoint Identifier | Inbound Course °M(°T) | Magnetic Variation | Outbound Time (MIN) | Turn Direction | Minimum Altitude (FT) | Maximum Altitude (FT) | Speed (KIAS) | Navigation Specification |
|------|---------------------|-----------------------|--------------------|---------------------|----------------|-----------------------|-----------------------|------------------|--------------------------|
| Hold | ENBIM | 195 (186.5) | -8.8 | 1.0(-14000) | L | 9000 | FL140 | -230 (-14000) | RNP1 |

STANDARD ARRIVAL CHART - INSTRUMENT

RJSI / HANAMAKI

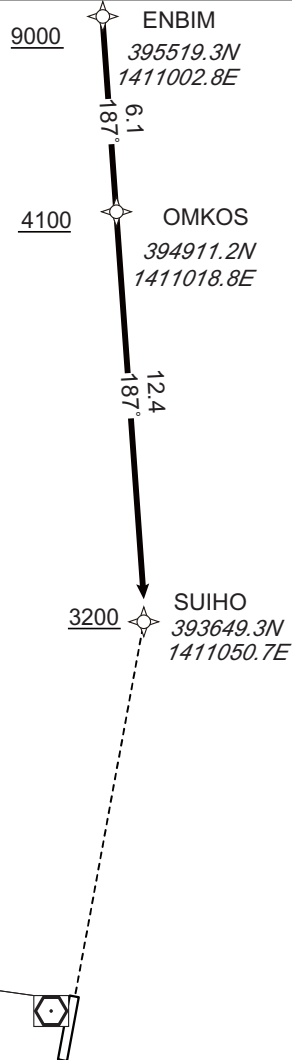
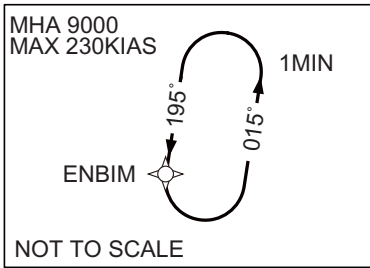
RNAV STAR RWY20

SUIHO ARRIVAL

RNP1

Note GNSS required.

VAR 9°W



VOR/DME
HANAMAKI
112.8 HPE
CH-75X
39°26'00"N/141°08'01"E
300FT

From ENBIM at or above 9000FT, to OMKOS at or above 4100FT, to SUIHO at or above 3200FT.

| Serial Number | Path Descriptor | Waypoint Identifier | Fly Over | Course °M(°T) | Magnetic Variation | Distance (NM) | Turn Direction | Altitude (FT) | Speed (KIAS) | Vertical Angle | Navigation Specification |
|---------------|-----------------|---------------------|----------|----------------|--------------------|---------------|----------------|---------------|--------------|----------------|--------------------------|
| 001 | IF | ENBIM | - | - | -8.8 | - | - | +9000 | - | - | RNP1 |
| 002 | TF | OMKOS | - | 187 (178.1) | -8.8 | 6.1 | - | +4100 | - | - | RNP1 |
| 003 | TF | SUIHO | - | 187 (178.1) | -8.8 | 12.4 | - | +3200 | - | - | RNP1 |

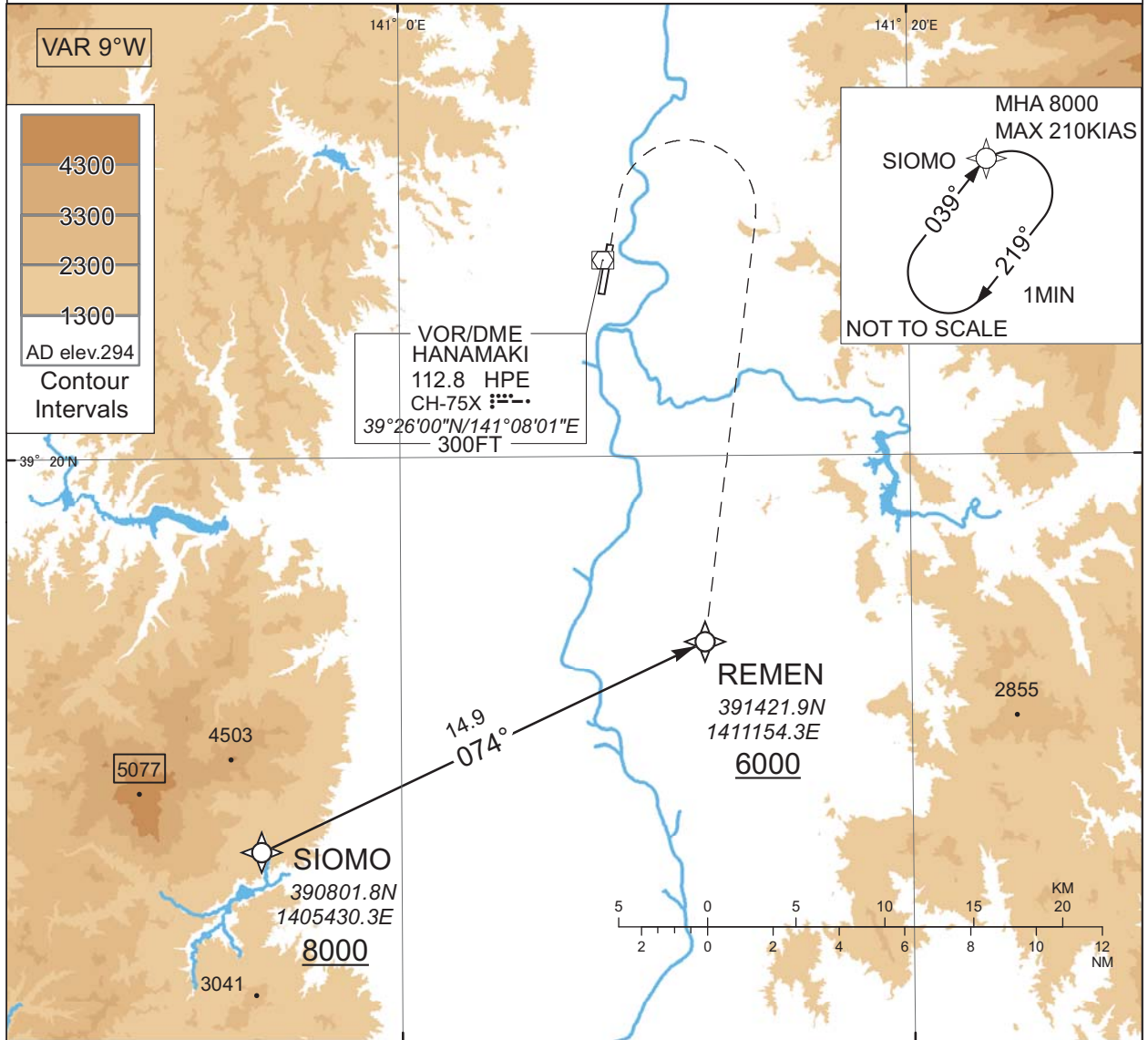
| Path | Waypoint Identifier | Inbound Course °M(°T) | Magnetic Variation | Outbound Time (MIN) | Turn Direction | Minimum Altitude (FT) | Maximum Altitude (FT) | Speed (KIAS) | Navigation Specification |
|------|---------------------|-----------------------|--------------------|---------------------|----------------|-----------------------|-----------------------|------------------|--------------------------|
| Hold | ENBIM | 195 (186.5) | -8.8 | 1.0(-14000) | L | 9000 | FL140 | -230 (-14000) | RNP1 |

CHANGE : Navigation Specification(Basic RNP1 → RNP1).

STANDARD ARRIVAL CHART - INSTRUMENT

RJSI / HANAMAKI RNAV STAR RWY20
REMEN WEST ARRIVAL RNP1

Note GNSS required.



CHANGE : Navigation Specification(Basic RNP1 → RNP1).

From SIOMO at or above 8000FT, to REMEN at or above 6000FT.

| Serial Number | Path Descriptor | Waypoint Identifier | Fly Over | Course °M(°T) | Magnetic Variation | Distance (NM) | Turn Direction | Altitude (FT) | Speed (KIAS) | Vertical Angle | Navigation Specification |
|---------------|-----------------|---------------------|----------|----------------|--------------------|---------------|----------------|---------------|--------------|----------------|--------------------------|
| 001 | IF | SIOMO | - | - | -8.8 | - | - | +8000 | - | - | RNP1 |
| 002 | TF | REMEN | - | 074 (064.7) | -8.8 | 14.9 | - | +6000 | - | - | RNP1 |

| Path | Waypoint Identifier | Inbound Course °M(°T) | Magnetic Variation | Outbound Time (MIN) | Turn Direction | Minimum Altitude (FT) | Maximum Altitude (FT) | Speed (KIAS) | Navigation Specification |
|------|---------------------|-----------------------|--------------------|---------------------|----------------|-----------------------|-----------------------|--------------|--------------------------|
| Hold | SIOMO | 039 (030.1) | -8.8 | 1.0(-14000) | R | 8000 | FL140 | -210(-14000) | RNP1 |

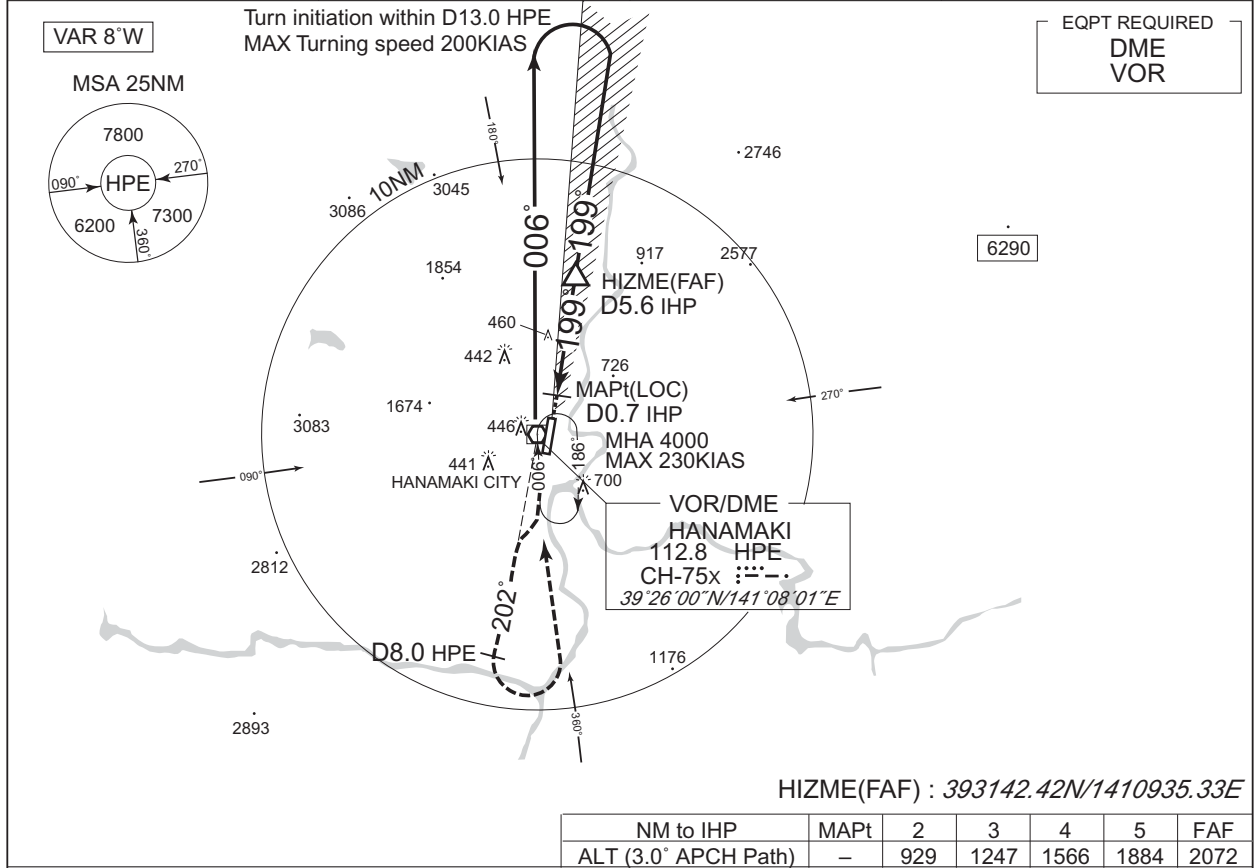
INTENTIONALLY LEFT BLANK

INSTRUMENT APPROACH CHART

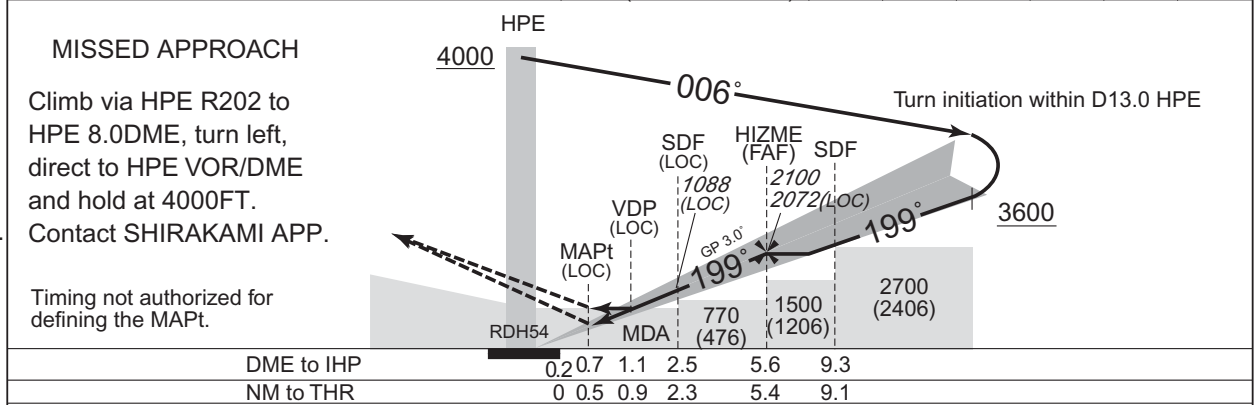
RJSI / HANAMAKI

ILS Z or LOC Z RWY20

| | | | |
|--|--|---------------------------------|------------|
| SHIRAKAMI APP 119.25 - 315.3 - 120.65 | ILS - LOC 109.3 IHP ILS - GP 332.0 ILS - DME CH-30X | HANAMAKI RADIO 118.2 - 126.2 | RADAR AVBL |
|--|--|---------------------------------|------------|



CHANGE : ATC call sign and FREQ. Description of RADAR Service. Missed APCH PROC.



| | | | | | | |
|--------|-----------|---------------|-----------|--------------|----------------|------|
| MINIMA | | THR elev. 298 | | AD elev. 294 | | |
| CAT | CAT I | LOC | | CIRCLING | | |
| | DA(H) | RVR/CMV | MDA(H) | RVR/CMV | MDA(H) VIS | |
| A | 498 (200) | 550 | 640 (346) | 900 | 760 (466) 1600 | |
| B | | | | 1000 | 860 (566) | |
| C | | | | 1400 | 1000 (706) | 2400 |
| D | | | | | 3200 | |

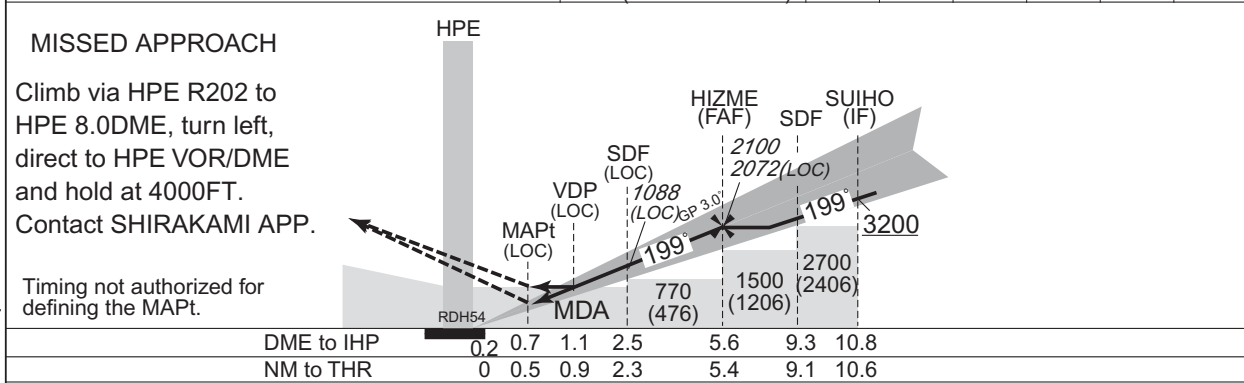
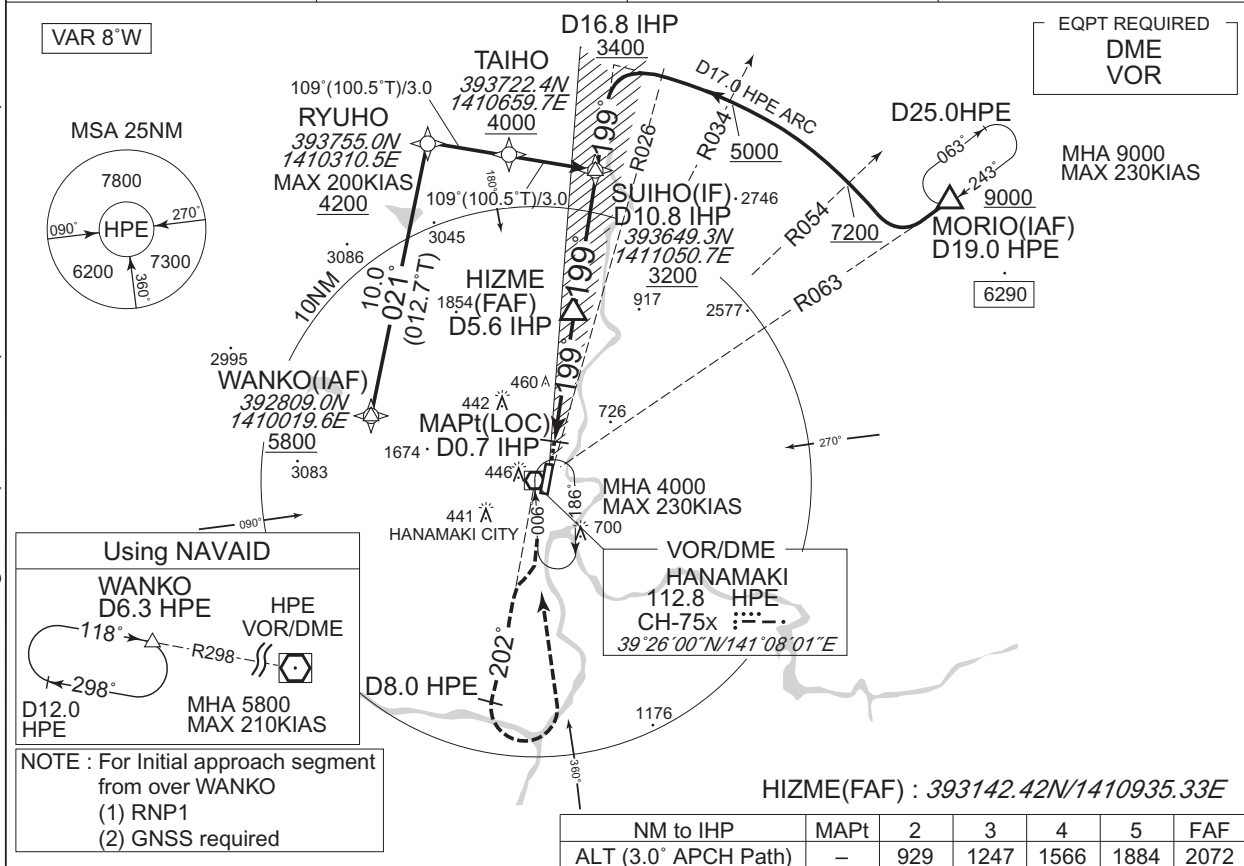
INSTRUMENT APPROACH CHART

RJSI / HANAMAKI

ILS Y or LOC Y RWY20

| | | | |
|--|--|---------------------------------|------------|
| SHIRAKAMI APP 119.25 - 315.3 - 120.65 | ILS - LOC 109.3 IHP ILS - GP 332.0 ILS - DME CH-30X | HANAMAKI RADIO 118.2 - 126.2 | RADAR AVBL |
|--|--|---------------------------------|------------|

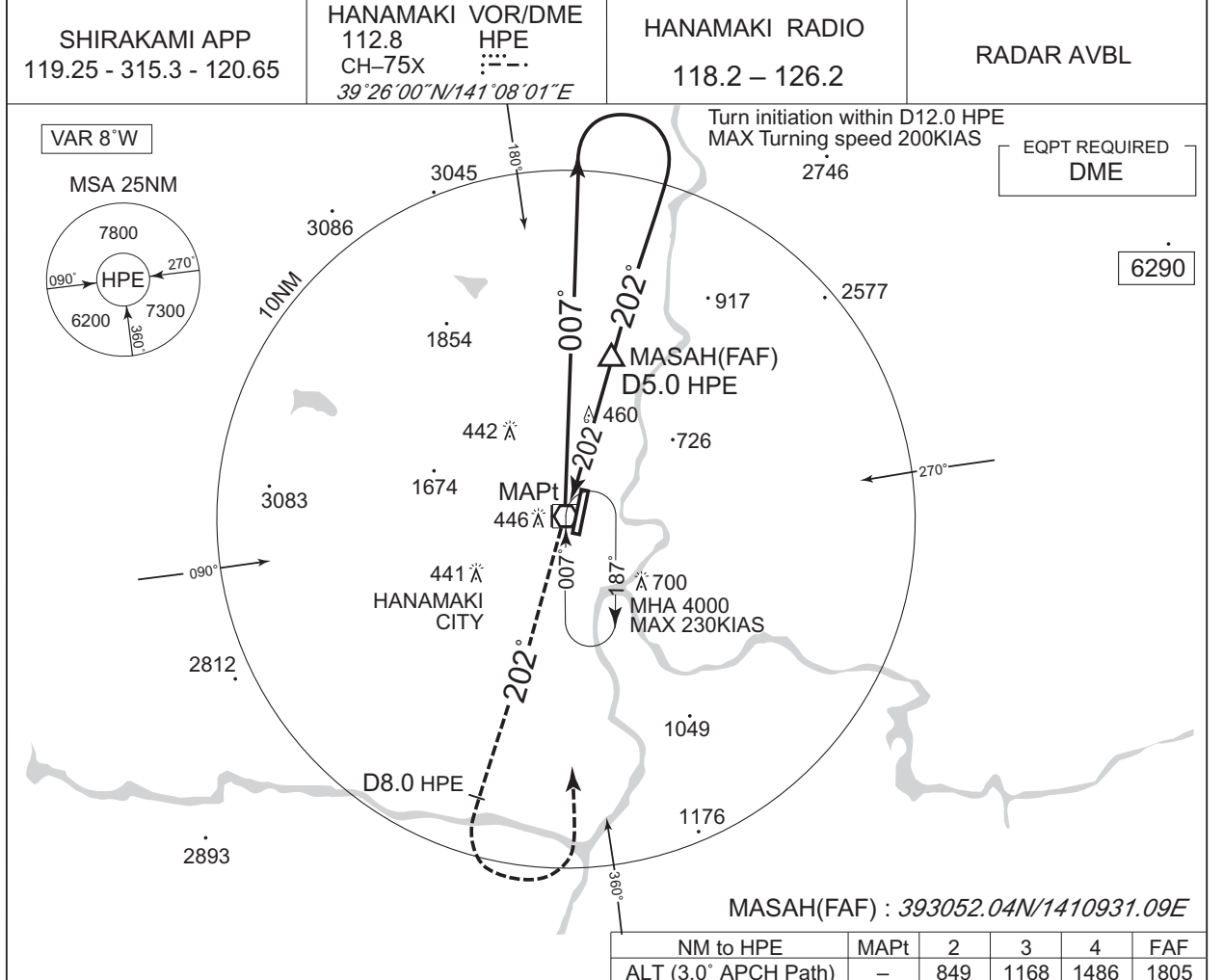
CHANGE : ATC call sign and FREQ. Description of RADAR Service. Missed APCH PROC. Navigation Specification(Basic RNP1 → RNP1).



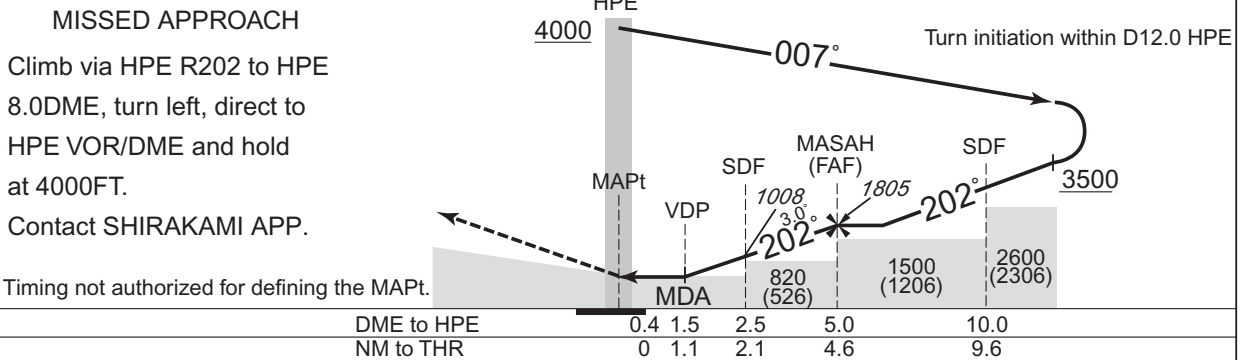
| | | | | | | |
|---------------|-----------|----------------------|-----------|---------------------|-----------|------|
| MINIMA | | THR elev. 298 | | AD elev. 294 | | |
| CAT | CAT I | | LOC | | CIRCLING | |
| | DA(H) | RVR/CMV | MDA(H) | RVR/CMV | MDA(H) | VIS |
| A | 498 (200) | 550 | 640 (346) | 900 | 760 (466) | 1600 |
| B | | | | 1000 | 860 (566) | |
| C | | | | 1000 (706) | 2400 | |
| D | | | | 1400 | 3200 | |

INSTRUMENT APPROACH CHART

RJSI / HANAMAKI VOR RWY20



CHANGE : ATC call sign and FREQ. Description of RADAR Service. Missed APCH PROC.



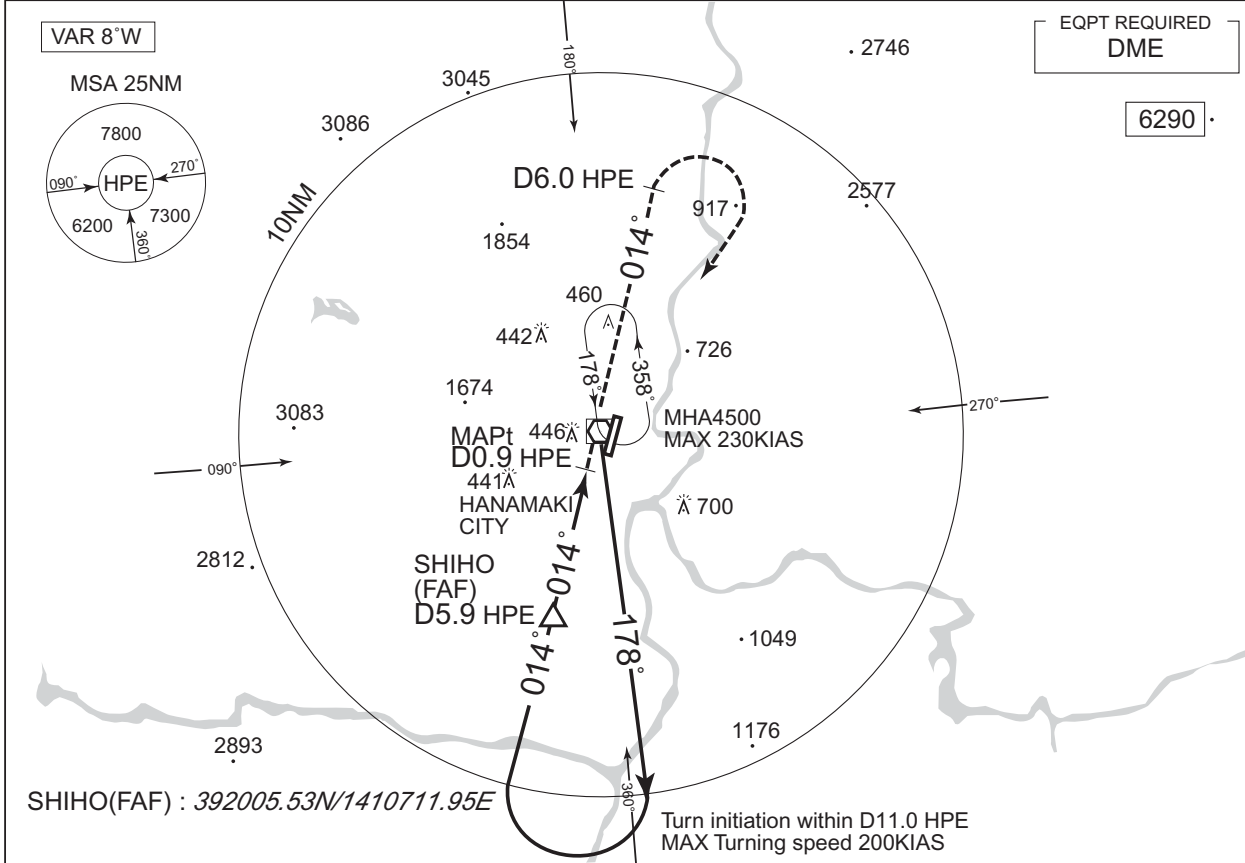
| | | | | |
|---------------|----------------------|---------------------|-----------------|------|
| MINIMA | THR elev. 298 | AD elev. 294 | CIRCLING | |
| CAT | MDA(H) | RVR/ CMV | MDA(H) | VIS |
| A | 690 (396) | 900 | 760 (466) | 1600 |
| B | | 1000 | 860 (566) | |
| C | | 1000 (706) | 2400 | |
| D | | 1400 | 3200 | |

INSTRUMENT APPROACH CHART

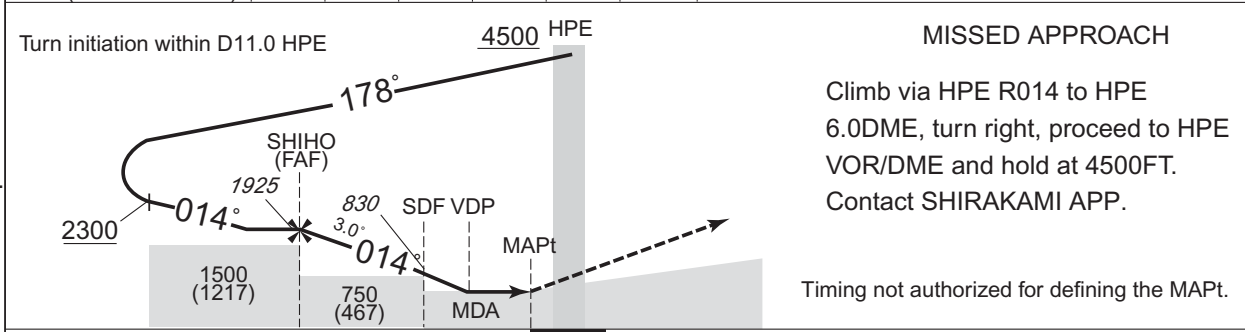
RJSI / HANAMAKI

VOR RWY02

| | | | |
|--|---|---------------------------------|------------|
| SHIRAKAMI APP 119.25 - 315.3 - 120.65 | HANAMAKI VOR/DME 112.8 HPE CH-75X 39°26'00"N/141°08'01"E | HANAMAKI RADIO 118.2 - 126.2 | RADAR AVBL |
|--|---|---------------------------------|------------|



| | | | | | | |
|----------------------|------|------|------|-----|-----|------|
| NM to HPE | FAF | 5 | 4 | 3 | 2 | MAPt |
| ALT (3.0° APCH Path) | 1925 | 1626 | 1308 | 989 | 671 | - |



| | | | | |
|-----|-----|-----|-----|------------|
| 5.9 | 2.5 | 1.9 | 0.9 | DME to HPE |
| 5.0 | 1.6 | 1.0 | 0 | NM to THR |

Missed APCH climb gradient MNM 3.6%

| | | | | |
|--------|-----------|---------------|--------------|------|
| MINIMA | | THR elev. 283 | AD elev. 294 | |
| CAT | | | CIRCLING | |
| | MDA(H) | CMV | MDA(H) | VIS |
| A | 640 (357) | 1200 | 760 (466) | 1600 |
| B | | 1300 | 860 (566) | |
| C | | 1400 | 1000 (706) | 2400 |
| D | 650 (367) | 1600 | | 3200 |

MINIMA with Missed APCH climb gradient of 2.5% are not established.

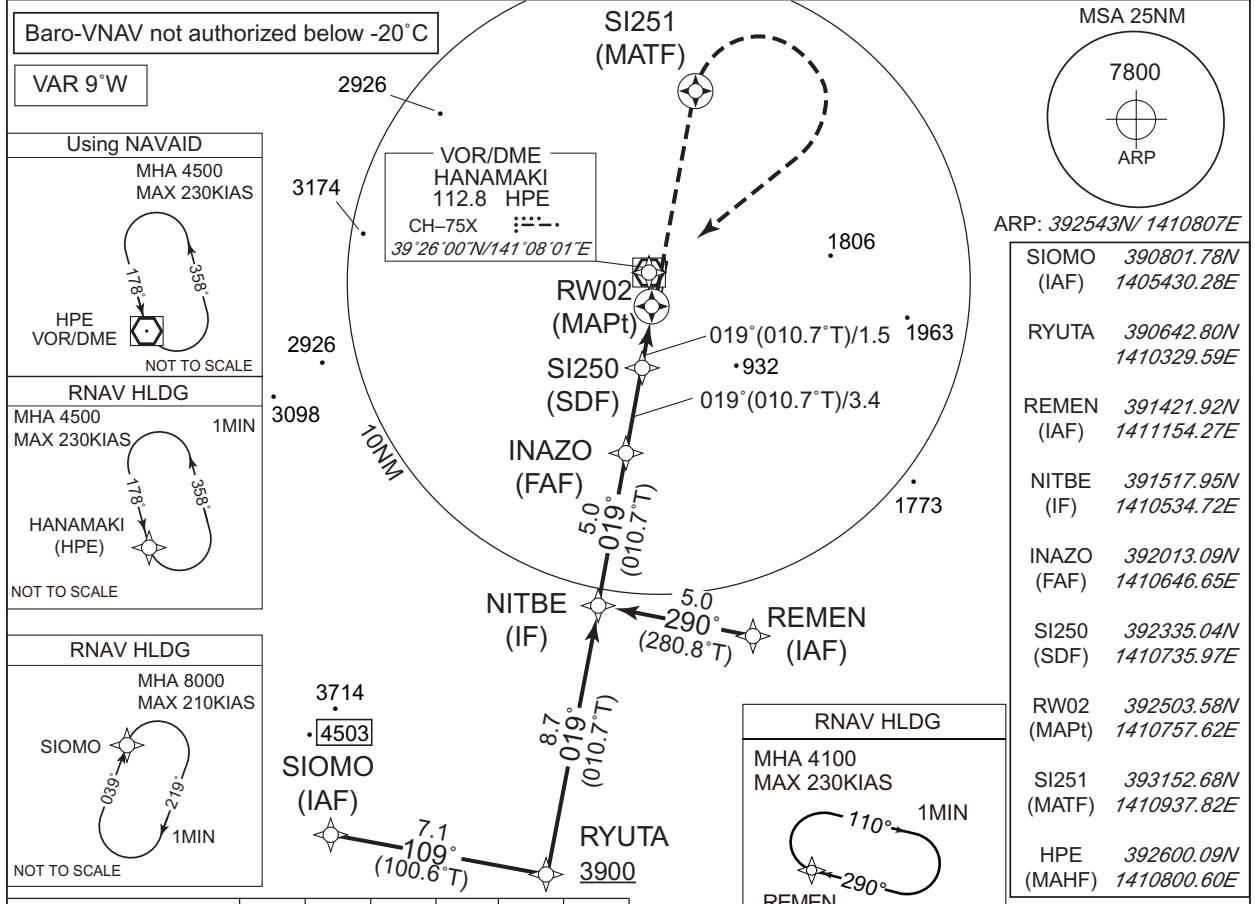
CHANGE : ATC call sign and FREQ. Description of RADAR Service. Missed APCH PROC.

INSTRUMENT APPROACH CHART

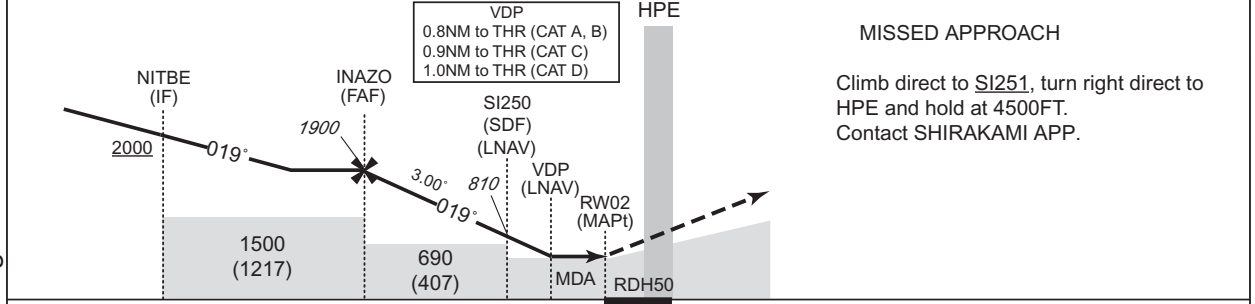
RJSI / HANAMAKI

RNP Z RWY02

| | | | |
|--|----------|---------------------------------|------------|
| SHIRAKAMI APP 119.25 - 315.3 - 120.65 | RNP APCH | HANAMAKI RADIO 118.2 - 126.2 | RADAR AVBL |
|--|----------|---------------------------------|------------|



| | | | | | | |
|---------------------|------|------|------|-----|-----|------|
| NM to Next Fix | FAF | 4 | 3 | 2 | 1 | MAPt |
| ALT(3.0° APCH Path) | 1900 | 1606 | 1288 | 969 | 651 | - |



Missed APCH climb gradient MNM 4.0%

| CAT | LNAV/VNAV | | LNAV | | CIRCLING | |
|-----|-----------|------|----------|------|-----------|------|
| | DA(H) | CMV | MDA(H) | CMV | MDA(H) | VIS |
| A | 610(327) | 1200 | 610(327) | 1200 | 760(466) | 1600 |
| B | | 1300 | | 1300 | | |
| C | 630(347) | 1400 | 630(347) | 1400 | 1000(706) | 2400 |
| D | 650(367) | 1600 | 650(367) | 1600 | | 3200 |

MINIMA with Missed APCH climb gradient of 2.5% are not established.

CHANGE : Missed APCH for using VOR/DME abolished.

INSTRUMENT APPROACH CHART

RJSI / HANAMAKI

RNP Y RWY02(AR)

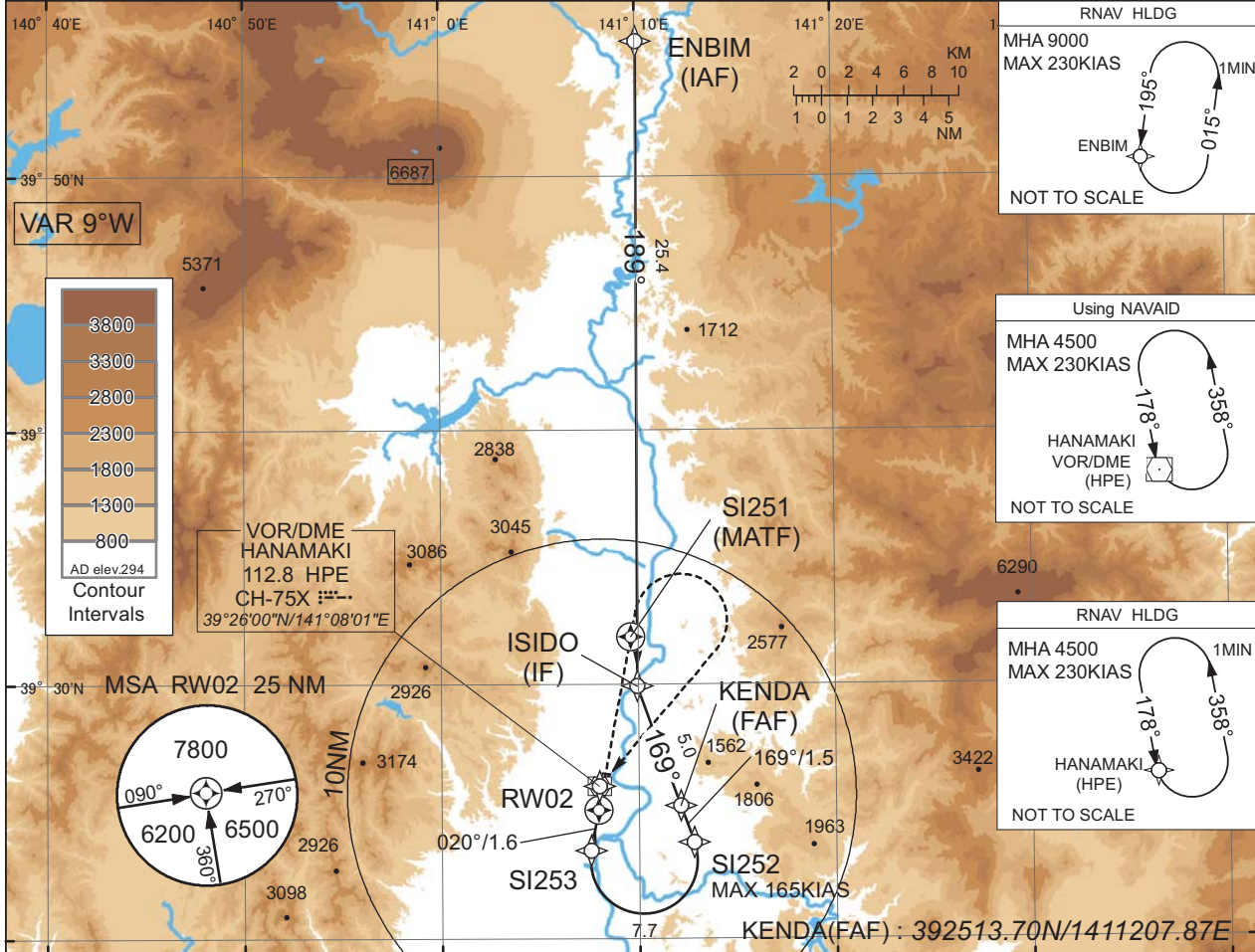
SHIRAKAMI APP
119.25 - 315.3 - 120.65

RNP AR
RF required.

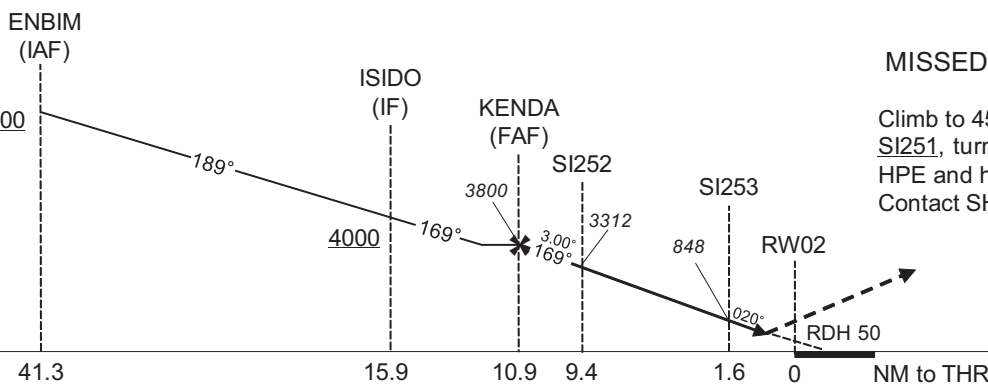
HANAMAKI RADIO
118.2 - 126.2

RADAR AVBL

For uncompensated Baro-VNAV systems, procedure not authorized below -20°C / above 45°C



CHANGE : ATC call sign and FREQ. Description of RADAR Service. Missed APCH PROC.



MISSED APPROACH

Climb to 4500FT, direct to SI251, turn right direct to HPE and hold.
Contact SHIRAKAMI APP.

Missed APCH climb gradient MNM 4.0%

| MINIMA | THR elev. 283 | AD elev. 294 |
|--------|---------------|--------------|
| CAT | RNP 0.30 | |
| | DA(H) | CMV |
| A | - | - |
| B | - | - |
| C | 595(312) | 1400 |
| D | | 1600 |

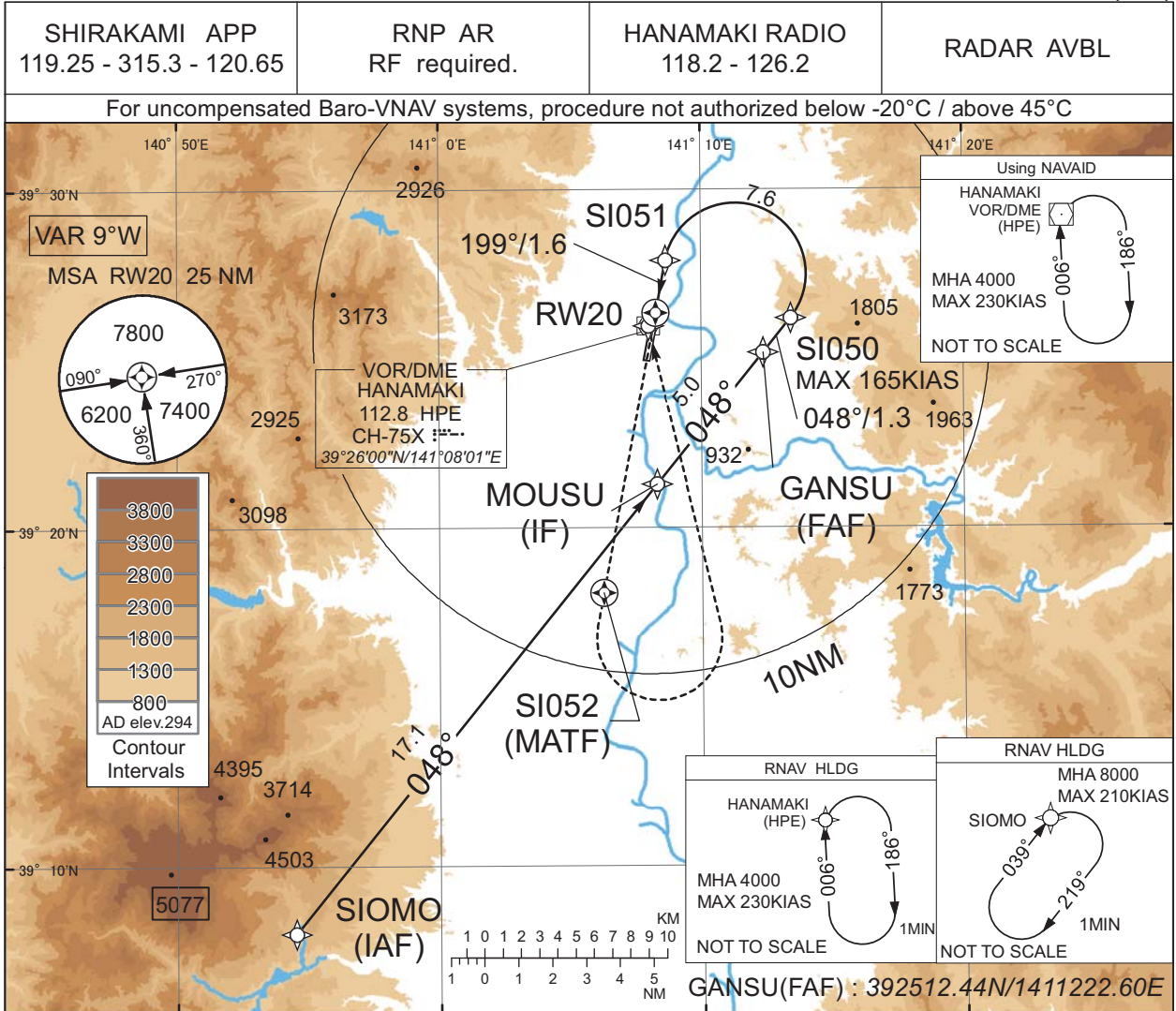
Authorization Required

MINIMA with Missed APCH climb gradient of 2.5% are not established.

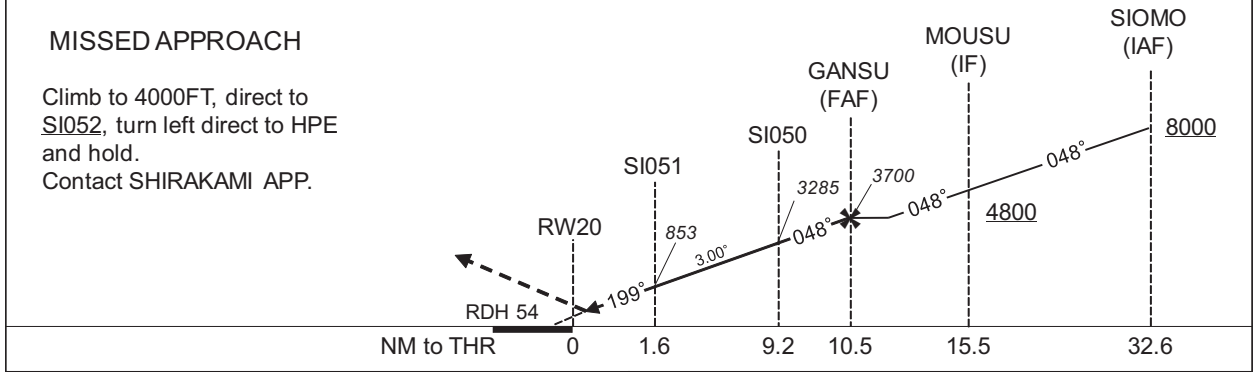
INSTRUMENT APPROACH CHART

RJSI / HANAMAKI

RNP Z RWY20(AR)



CHANGE : ATC call sign and FREQ. Description of RADAR Service. Missed APCH PROC.



| | | |
|--------|---------------|--------------|
| MINIMA | THR elev. 298 | AD elev. 294 |
| CAT | RNP 0.30 | |
| | DA(H) | RVR/CMV |
| A | - | - |
| B | - | - |
| C | 607(309) | 1000 |
| D | | 1400 |

Authorization Required

INSTRUMENT APPROACH CHART

RJSI / HANAMAKI

RNP Z RWY20(AR)

Coding Table

| Serial Number | Path Descriptor | Waypoint Identifier | Fly Over | Course °M(°T) | Magnetic Variation | Distance (NM) | Turn Direction | Altitude (FT) | Speed (KIAS) | VPA/RDH (°/FT) | RNP Value |
|---------------|------------------------------------|---------------------|----------|----------------|--------------------|---------------|----------------|---------------|--------------|----------------|-----------|
| 001 | IF | SIOMO | - | - | -8.8 | - | - | +8000 | - | - | - |
| 002 | TF | MOUSU | - | 048 (038.8) | -8.8 | 17.1 | - | +4800 | - | - | 1.0 |
| 003 | TF | GANSU | - | 048 (038.9) | -8.8 | 5.0 | - | 3700 | - | - | 1.0 |
| 004 | TF | SI050 | - | 048 (038.9) | -8.8 | 1.3 | - | 3285 | -165 | -3.00 | 0.3 |
| 005 | RF Center: SIRF2 r=2.10NM | SI051 | - | - | -8.8 | 7.6 | L | 853 | - | -3.00 | 0.3 |
| 006 | TF | RW20 | Y | 199 (190.7) | -8.8 | 1.6 | - | 352 | - | -3.00/54 | 0.3 |
| 007 | DF | SI052 | Y | - | -8.8 | - | - | - | - | - | 1.0 |
| 008 | DF | HPE | - | - | -8.8 | - | L | 4000 | - | - | 1.0 |

| Path | Waypoint Identifier | Inbound Course °M(°T) | Magnetic Variation | Outbound Time (MIN) | Turn Direction | Minimum Altitude (FT) | Maximum Altitude (FT) | Speed (KIAS) | RNP Value |
|------|---------------------|-----------------------|--------------------|---------------------|----------------|-----------------------|-----------------------|------------------|-----------|
| Hold | SIOMO | 039 (030.1) | -8.8 | 1.0 (-14000) | R | 8000 | FL140 | -210 (-14000) | 1.0 |
| Hold | HPE | 006 (357.5) | -8.8 | 1.0 (-14000) | R | 4000 | FL140 | -230 (-14000) | 1.0 |

Waypoint Coordinates

| Waypoint Identifier | Coordinates | RF Arc Center Identifier | Coordinates |
|---------------------|--------------------------|--------------------------|--------------------------|
| SIOMO | 390801.78N / 1405430.28E | SIRF2 | 392732.73N / 1411119.82E |
| MOUSU | 392119.11N / 1410818.81E | | |
| GANSU | 392512.44N / 1411222.60E | | |
| SI050 | 392613.23N / 1411326.21E | | |
| SI051 | 392756.30N / 1410839.89E | | |
| RW20 | 392623.24N / 1410817.11E | | |
| SI052 | 391806.42N / 1410615.76E | | |
| HPE | 392600.09N / 1410800.60E | | |

CHANGE : PROC renamed.

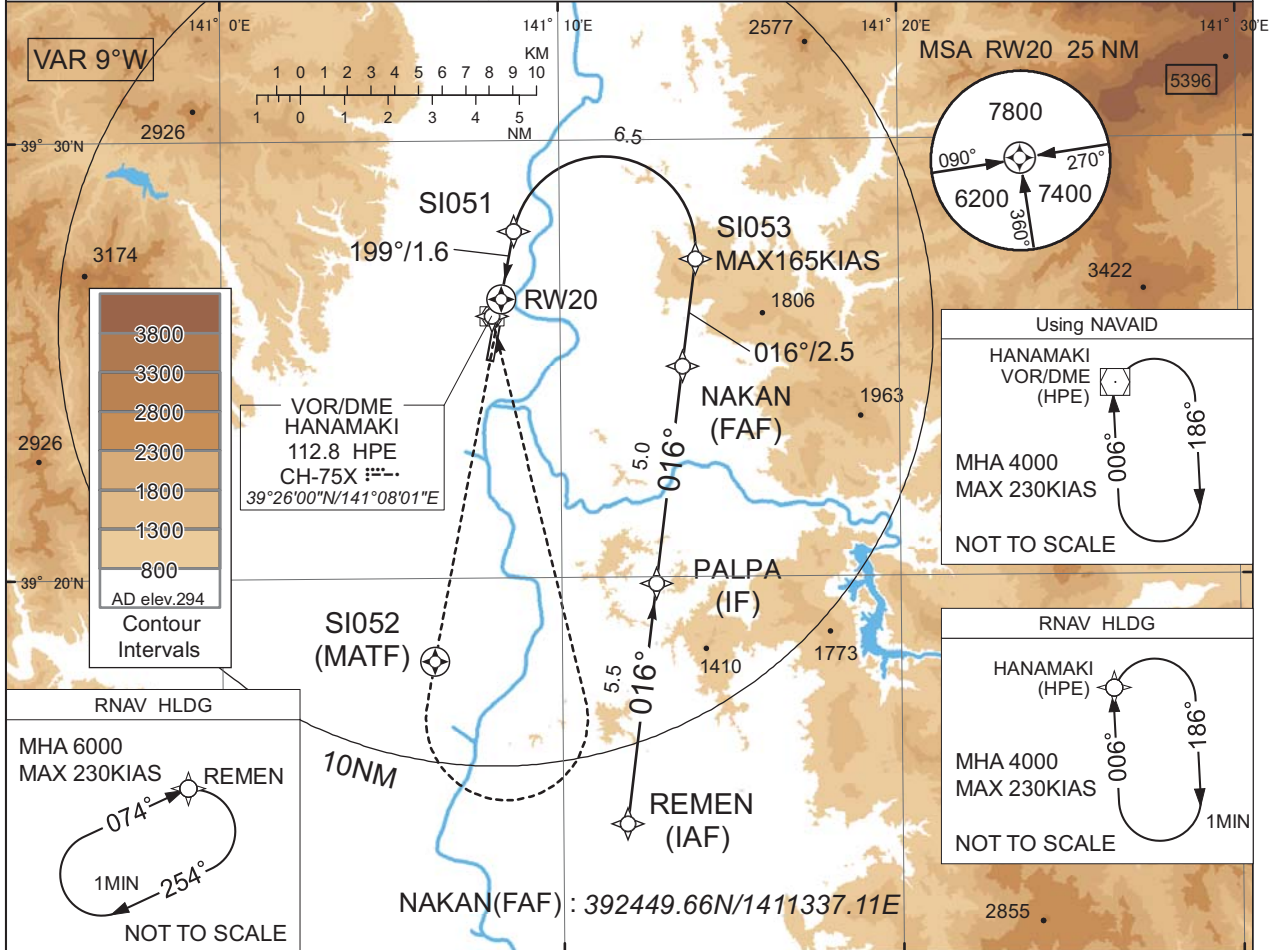
INSTRUMENT APPROACH CHART

RJSI / HANAMAKI

RNP Y RWY20(AR)

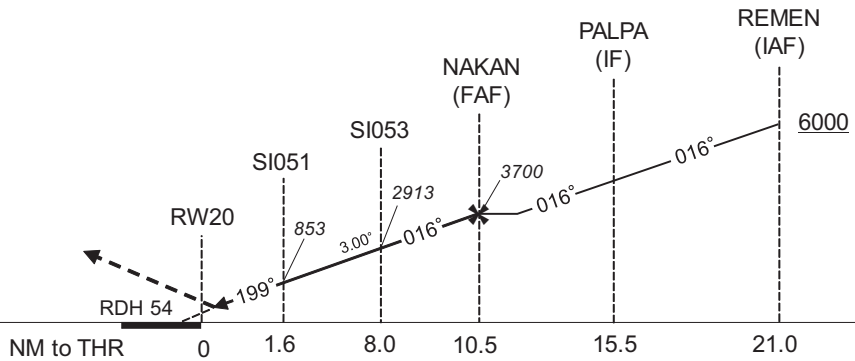
| | | | |
|--|------------------------|---------------------------------|------------|
| SHIRAKAMI APP 119.25 - 315.3 - 120.65 | RNP AR RF required. | HANAMAKI RADIO 118.2 - 126.2 | RADAR AVBL |
|--|------------------------|---------------------------------|------------|

For uncompensated Baro-VNAV systems, procedure not authorized below -20°C / above 45°C



MISSED APPROACH

Climb to 4000FT, direct to SI052, turn left direct to HPE and hold.
Contact SHIRAKAMI APP.



| | | |
|--------|---------------|--------------|
| MINIMA | THR elev. 298 | AD elev. 294 |
| CAT | RNP 0.30 | |
| | DA(H) | RVR/CMV |
| A | - | - |
| B | - | - |
| C | 607(309) | 1000 |
| D | | 1400 |

Authorization Required

CHANGE : ATC call sign and FREQ. Description of RADAR Service. Missed APCH PROC.

INSTRUMENT APPROACH CHART

RJSI / HANAMAKI

RNP Y RWY20(AR)

Coding Table

| Serial Number | Path Descriptor | Waypoint Identifier | Fly Over | Course °M(°T) | Magnetic Variation | Distance (NM) | Turn Direction | Altitude (FT) | Speed (KIAS) | VPA/ RDH (°/FT) | RNP Value |
|---------------|------------------------------------|---------------------|----------|---------------|--------------------|---------------|----------------|---------------|--------------|-----------------|-----------|
| 001 | IF | REMEN | - | - | -8.8 | - | - | +6000 | - | - | - |
| 002 | TF | PALPA | - | 016 (007.2) | -8.8 | 5.5 | - | - | - | - | 1.0 |
| 003 | TF | NAKAN | - | 016 (007.2) | -8.8 | 5.0 | - | 3700 | - | - | 1.0 |
| 004 | TF | SI053 | - | 016 (007.2) | -8.8 | 2.5 | - | 2913 | -165 | -3.00 | 0.3 |
| 005 | RF Center: SIRF2 r=2.10NM | SI051 | - | - | -8.8 | 6.5 | L | 853 | - | -3.00 | 0.3 |
| 006 | TF | RW20 | Y | 199 (190.7) | -8.8 | 1.6 | - | 352 | - | -3.00/54 | 0.3 |
| 007 | DF | SI052 | Y | - | -8.8 | - | - | - | - | - | 1.0 |
| 008 | DF | HPE | - | - | -8.8 | - | L | 4000 | - | - | 1.0 |

| Path | Waypoint Identifier | Inbound Course °M(°T) | Magnetic Variation | Outbound Time (MIN) | Turn Direction | Minimum Altitude (FT) | Maximum Altitude (FT) | Speed (KIAS) | RNP Value |
|------|---------------------|-----------------------|--------------------|---------------------|----------------|-----------------------|-----------------------|---------------|-----------|
| Hold | REMEN | 074 (065.0) | -8.8 | 1.0 (-14000) | R | 6000 | FL140 | -230 (-14000) | 1.0 |
| Hold | HPE | 006 (357.5) | -8.8 | 1.0 (-14000) | R | 4000 | FL140 | -230 (-14000) | 1.0 |

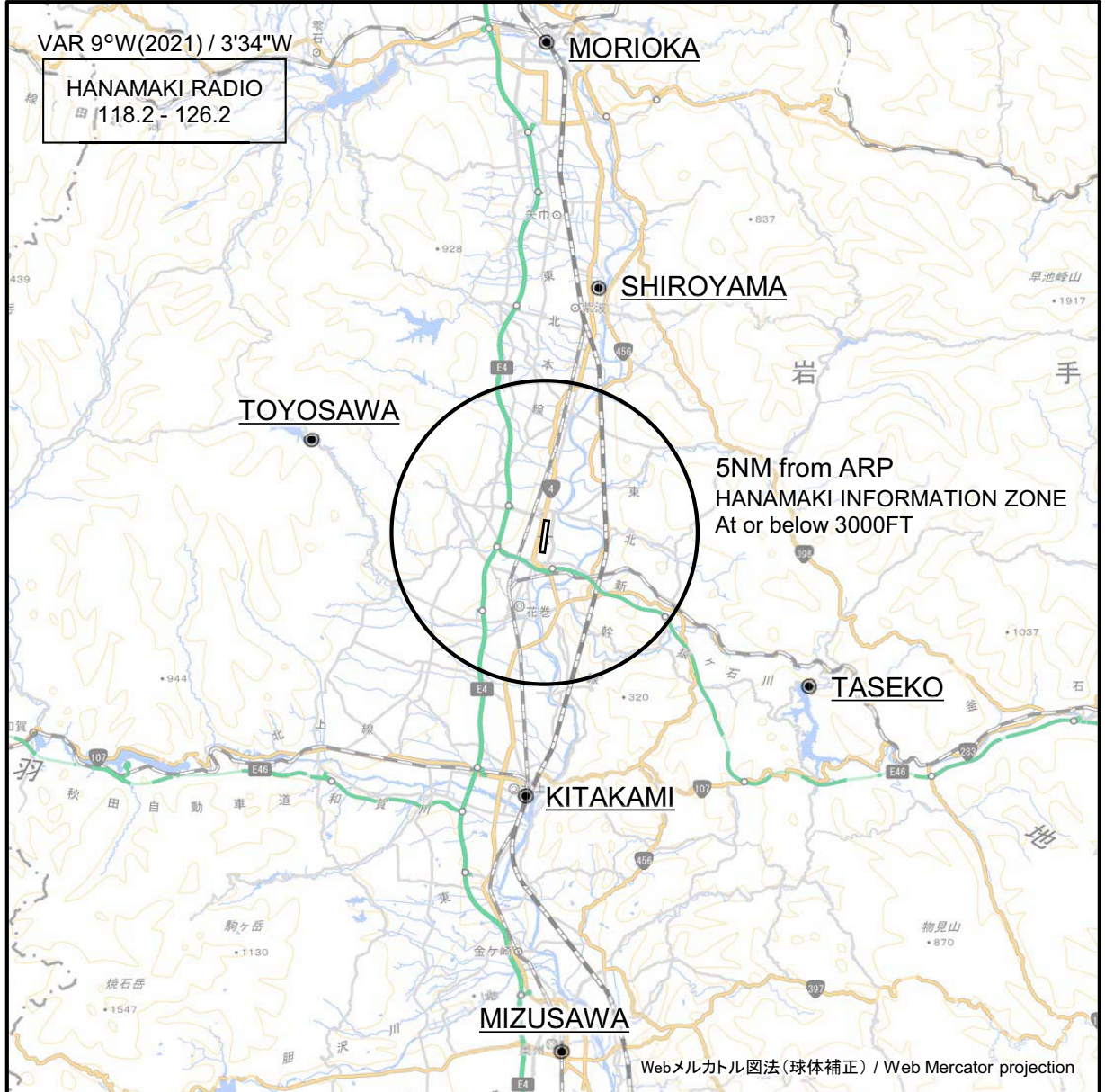
Waypoint Coordinates

| Waypoint Identifier | Coordinates | RF Arc Center Identifier | Coordinates |
|---------------------|--------------------------|--------------------------|--------------------------|
| REMEN | 391421.92N / 1411154.27E | SIRF2 | 392732.73N / 1411119.82E |
| PALPA | 391951.68N / 1411248.23E | | |
| NAKAN | 392449.66N / 1411337.11E | | |
| SI053 | 392716.81N / 1411401.29E | | |
| SI051 | 392756.30N / 1410839.89E | | |
| RW20 | 392623.24N / 1410817.11E | | |
| SI052 | 391806.42N / 1410615.76E | | |
| HPE | 392600.09N / 1410800.60E | | |

CHANGE : PROC renamed.

RJSI / HANAMAKI

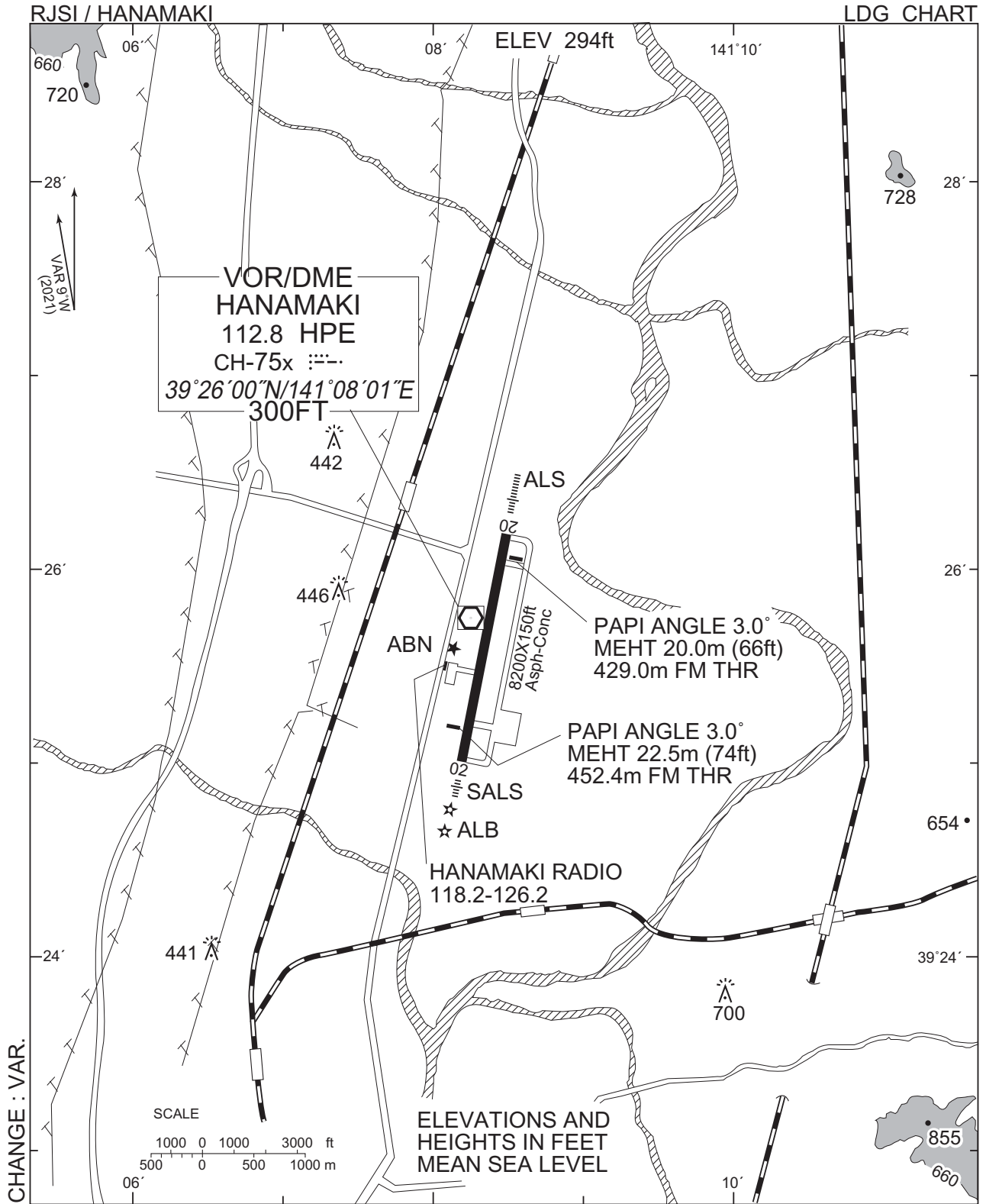
Visual REP



CHANGE : Map updated. BRG/DIST from ARP. Taseko established. Tsuchisawa abolished.

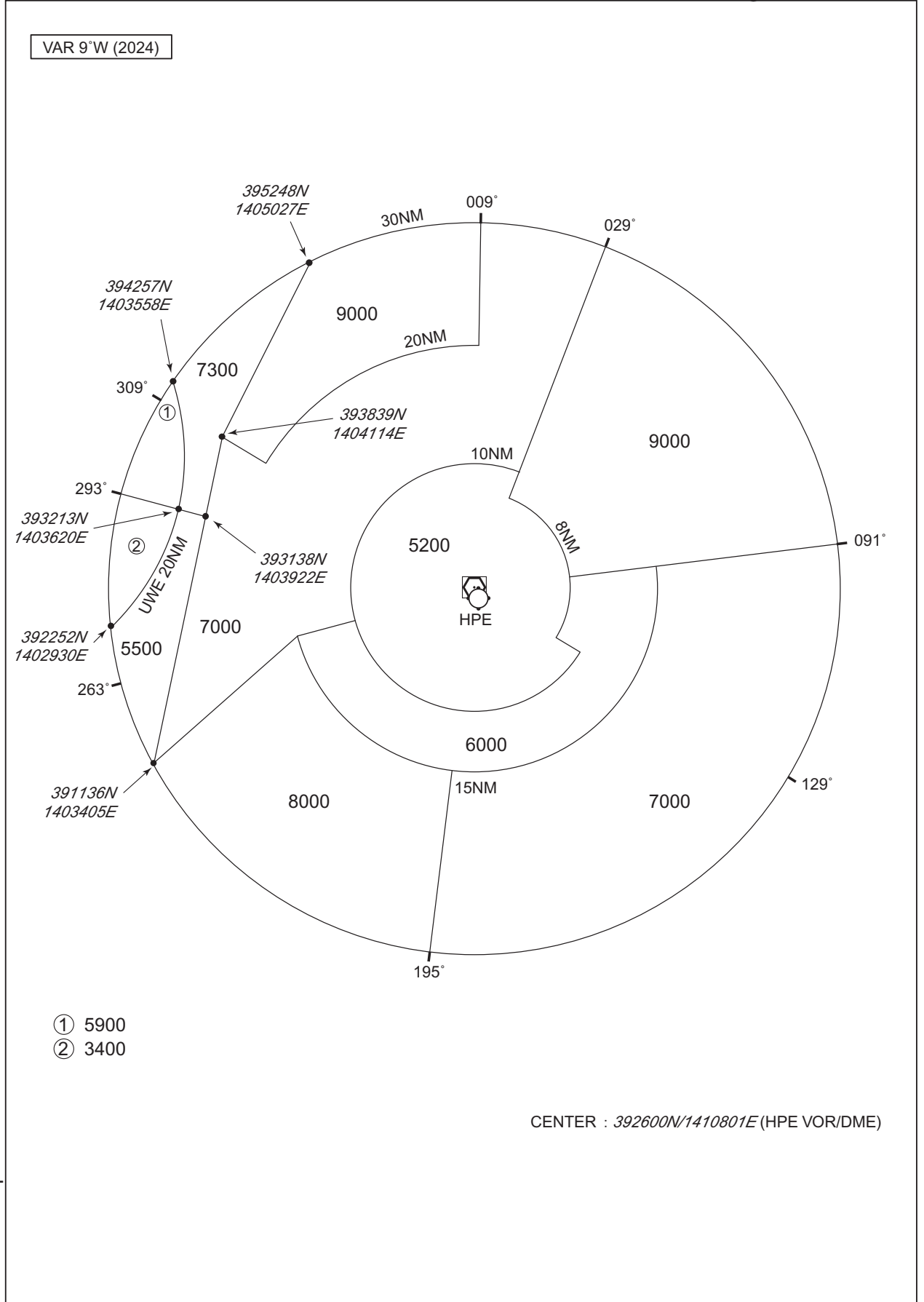
※図中に標高を示す数字がある場合、単位はメートル(m)である。The unit of measurement used to express elevation is meter(m).

| Call sign | BRG / DIST from ARP | Remarks |
|-----------------|---------------------|----------------------------|
| 盛岡 Morioka | 360°T / 16.4NM | JR駅 JR Station |
| 城山 Shiroyama | 012°T / 8.4NM | 城跡 The site of a castle |
| 豊沢 Toyosawa | 293°T / 8.1NM | 豊沢ダム Dam |
| 田瀬湖 Taseko | 121°T / 10.0NM | 田瀬ダム Dam |
| 北上 Kitakami | 184°T / 8.9NM | JR駅 JR Station |
| 水沢 Mizusawa | 178°T / 17.4NM | JR駅 JR Station |



RJSI / HANAMAKI

Minimum Vectoring Altitude CHART



CHANGE : Update.