

STANDARD DEPARTURE CHART -INSTRUMENT

RJSO / OMINATO

SID

OMINATO REVERSAL TWO DEPARTURE

RWY 04 : Climb RWY HDG to 200FT (400FT for fixed-wing ACFT), turn right,....

RWY 22 : Turn left,....

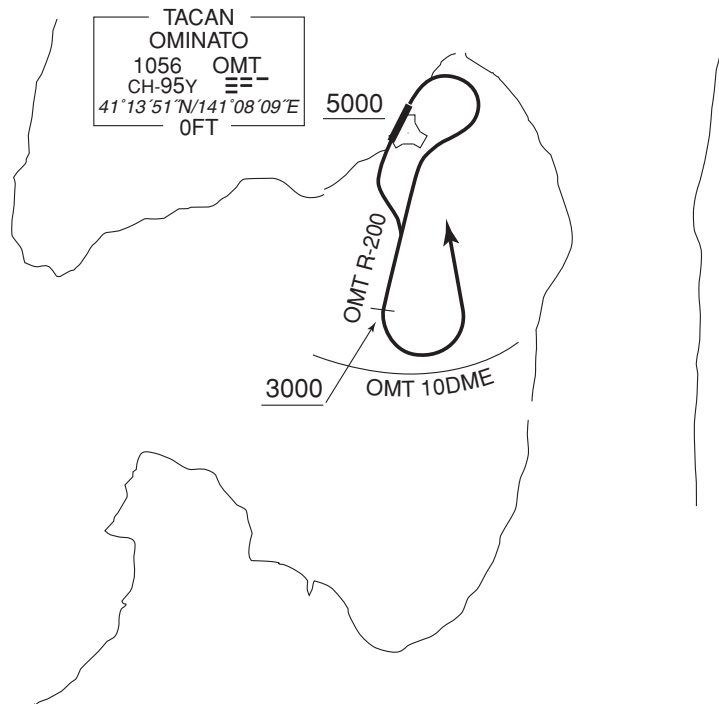
....climb via OMT R-200 to 3,000FT or above, then turn left and proceed to OMT TACAN within OMT 10DME.

Cross OMT TACAN at or above 5,000FT.

Note : Following climb gradient should be maintained until 3,000FT.

Speed (Knots)	60	90	120	150	180	210
Rate (Feet/Min)	300	450	600	750	900	1050

OMINATO REVERSAL TWO DEPARTURE



CHANGE : SID renamed, NDB OMINATO abolished

STANDARD DEPARTURE CHART -INSTRUMENT

RJSO / OMINATO

SID

MUTSU TWO DEPARTURE

RWY 04 : Climb RWY HDG to 200FT, turn right,....

RWY 22 : Climb RWY HDG to 200FT, turn left,....

....climb via OMT R200 to MUTSU. Cross MUTSU at or above 4000FT.

Note :

1 Following climb gradient should be maintained until 200FT.

Speed (Knots)	60	90	120	150	180	210
Rate (Feet/Min)	300	450	600	750	900	1050

2 Obstructions exist,

149FT MSL height group of trees at 0.97NM SW from ARP.

MISAWA TRANSITION

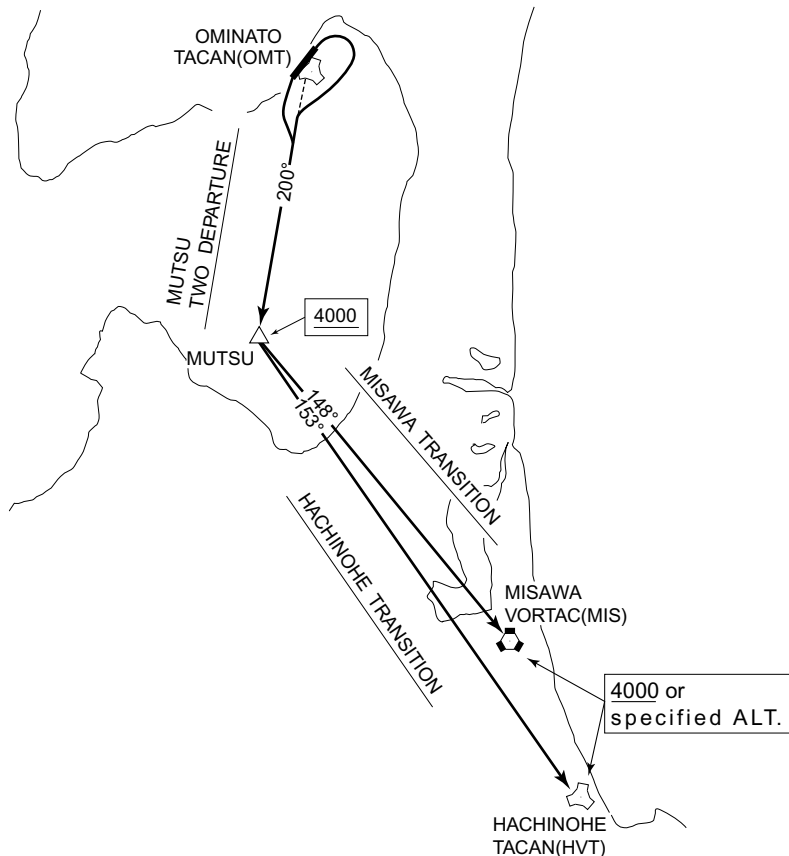
After MUTSU, proceed via MIS R328 to MIS VORTAC.

Cross MIS VORTAC at or above 4000FT or specified altitude.

HACHINOHE TRANSITION

After MUTSU, proceed via HVT R333 to HVT TACAN.

Cross HVT TACAN at or above 4000FT or specified altitude.

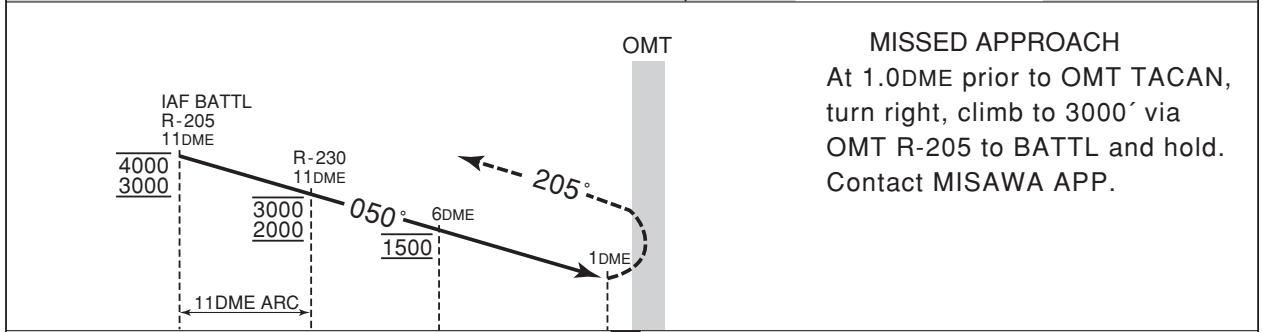
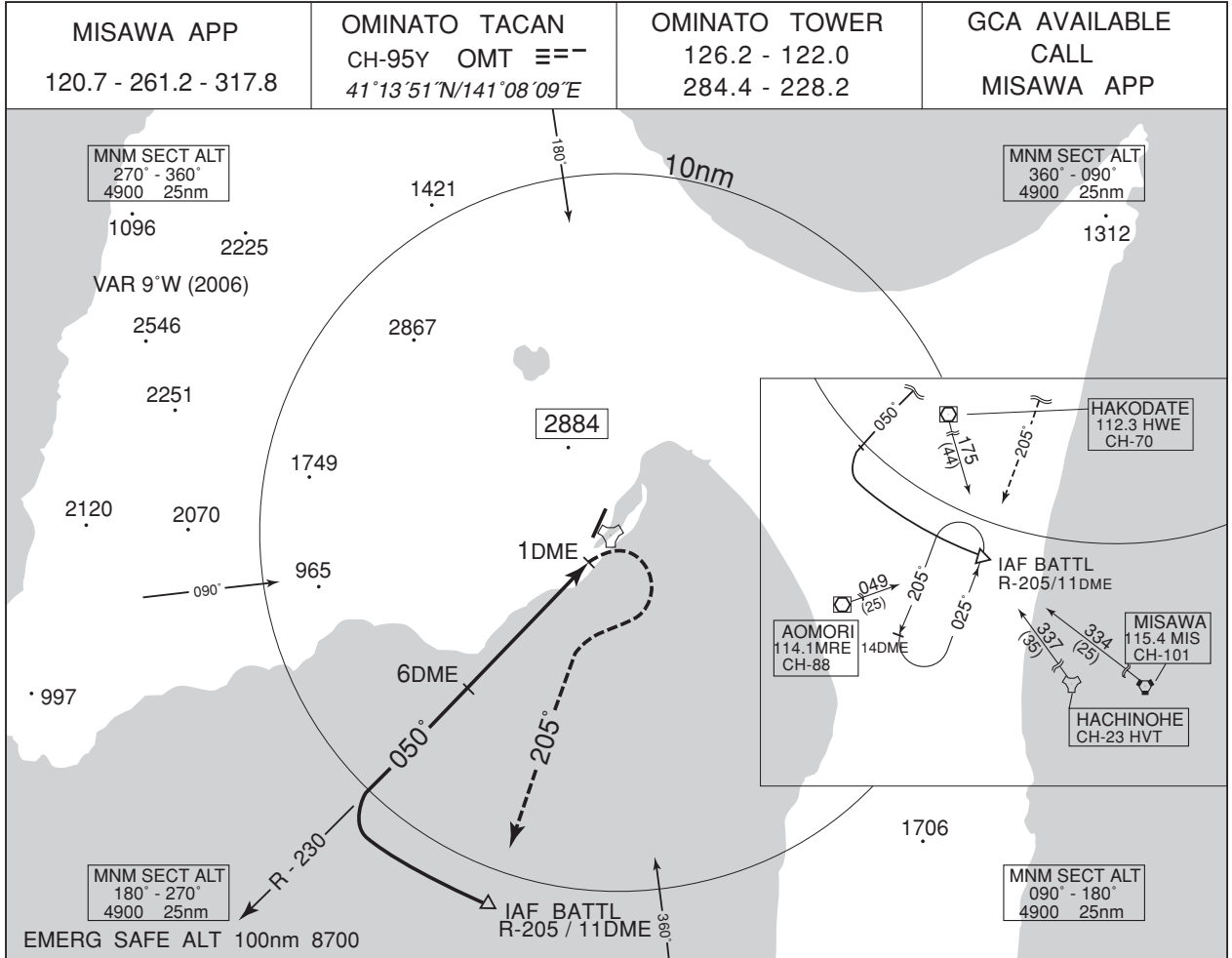


CHANGE : PROC renamed(MUTSU TWO DEPARTURE). PROC course. Note added.

INSTRUMENT APPROACH CHART

RJSO / OMINATO

TACAN A



MINIMA		AD elev. 24
CAT	CIRCLING	
	MDA(H)	VIS
A	600 (576)	1600
B	-	-
C	-	-
D	-	-

Circling to East side of RWY only.