

STANDARD DEPARTURE CHART -INSTRUMENT

RJSR / ODATE-NOSHIRO

SID

ODATE REVERSAL TWO DEPARTURE

RWY11 : Climb RWY HDG to 1800FT, turn right HDG332° to intercept and proceed...

RWY29 : Climb RWY HDG to ODE 3.0DME,...

...via ODE R287 to 6.0DME, turn left, direct to ODE VOR/DME.

Cross ODE VOR/DME at or above 6000FT.

Note RWY11 : 5.0% climb gradient required up to 1800FT.

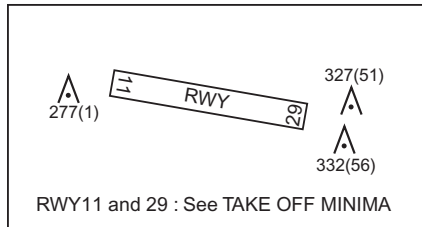
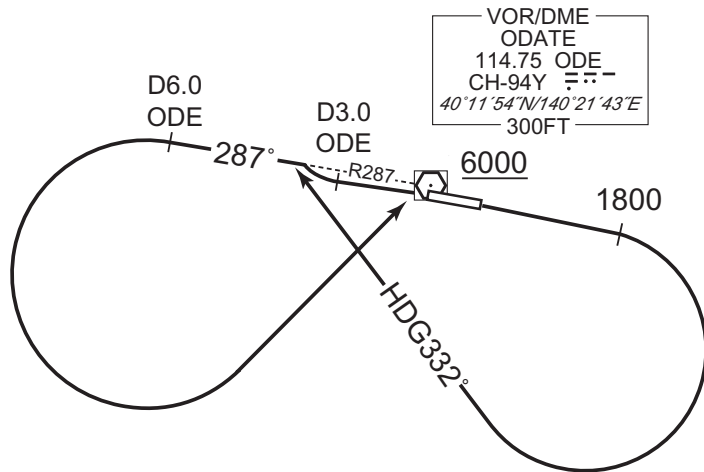
OBST ALT 1313FT located at 4.3NM 093° FM end of RWY11.

OBST ALT 2100FT located at 9.5NM 137° FM end of RWY11.

RWY29 : 4.0% climb gradient required up to 700FT.

OBST ALT 656FT located at 2.1NM 276° FM end of RWY29.

CHANGE : Description of PROC name.



STANDARD DEPARTURE CHART -INSTRUMENT

RJSR / ODATE-NOSHIRO

SID

LAGOON THREE DEPARTURE

RWY11 : Climb RWY HDG to 1800FT, turn right HDG332° to intercept and proceed...

RWY29 : Climb RWY HDG to ODE 3.0DME,...

...via ODE R287 to NOSSY, turn left, via UWE R360 to UWE VOR/DME.

Cross NOSSY at or above 3000FT.

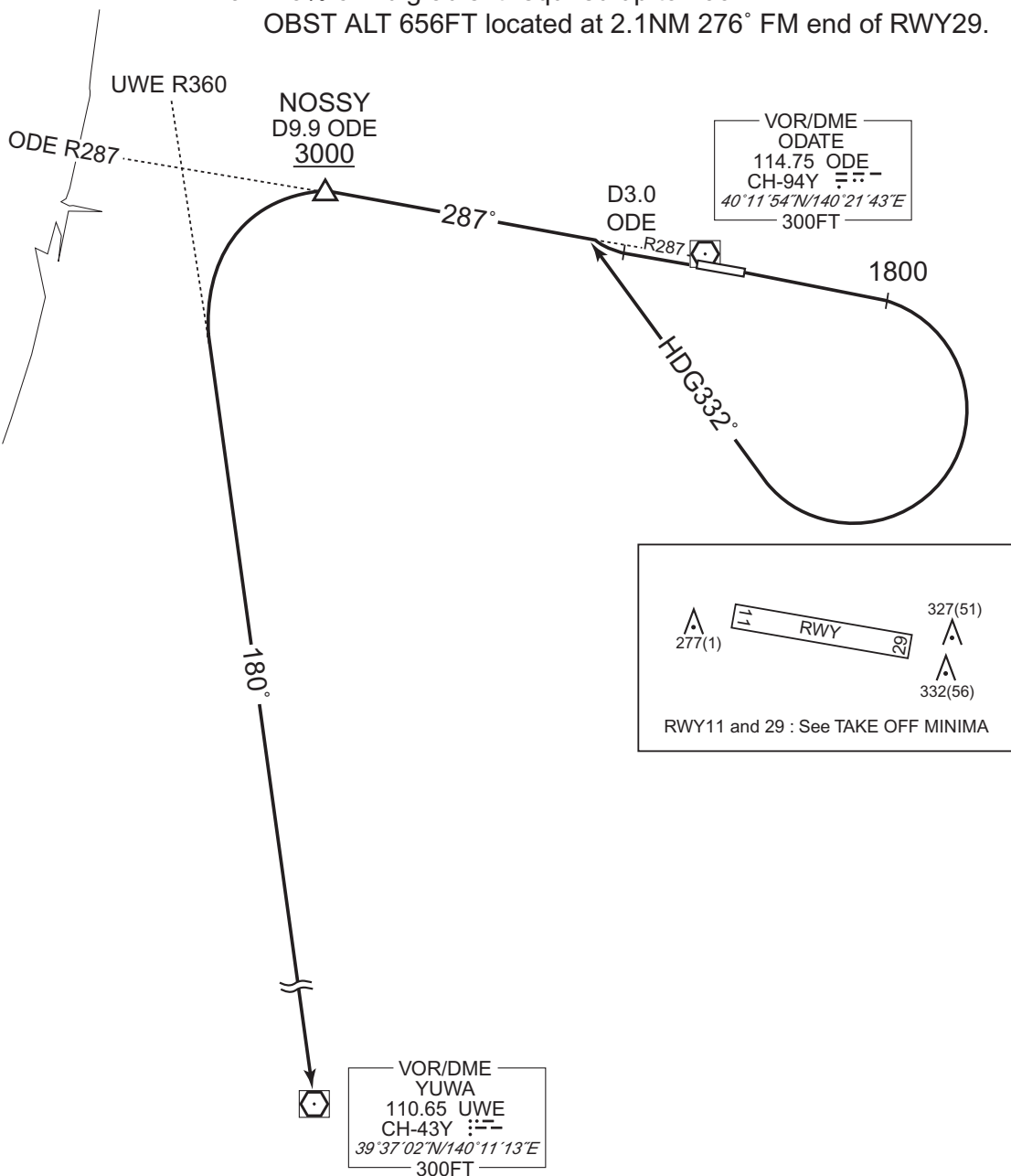
Note RWY11 : 5.0% climb gradient required up to 1800FT.

OBST ALT 1313FT located at 4.3NM 093° FM end of RWY11.

OBST ALT 2100FT located at 9.5NM 137° FM end of RWY11.

RWY29 : 4.0% climb gradient required up to 700FT.

OBST ALT 656FT located at 2.1NM 276° FM end of RWY29.



CHANGE : Description of PROC name.

STANDARD ARRIVAL CHART - INSTRUMENT

RJSR / ODATE-NOSHIRO

RNAV STAR RWY29

NOSSY ARRIVAL

RNP1

Note GNSS required.

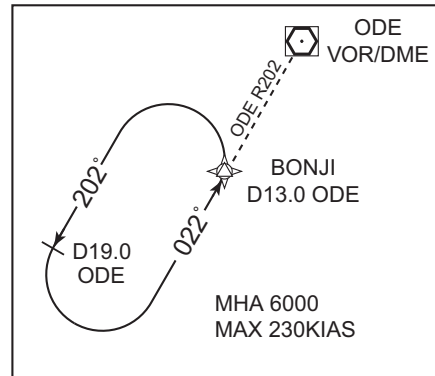
VAR 9°W

NOSSY
 401321.8N
 1400854.6E
 4000

VOR/DME
 ODATE
 114.75 ODE
 CH-94Y
 40°11'54"N/140°21'43"E
 300FT

TEBAR
 400729.7N
 1401034.6E

BONJI
 395913.4N
 1401752.5E
 6000



CHANGE : Navigation Specification(Basic RNP1 → RNP1).

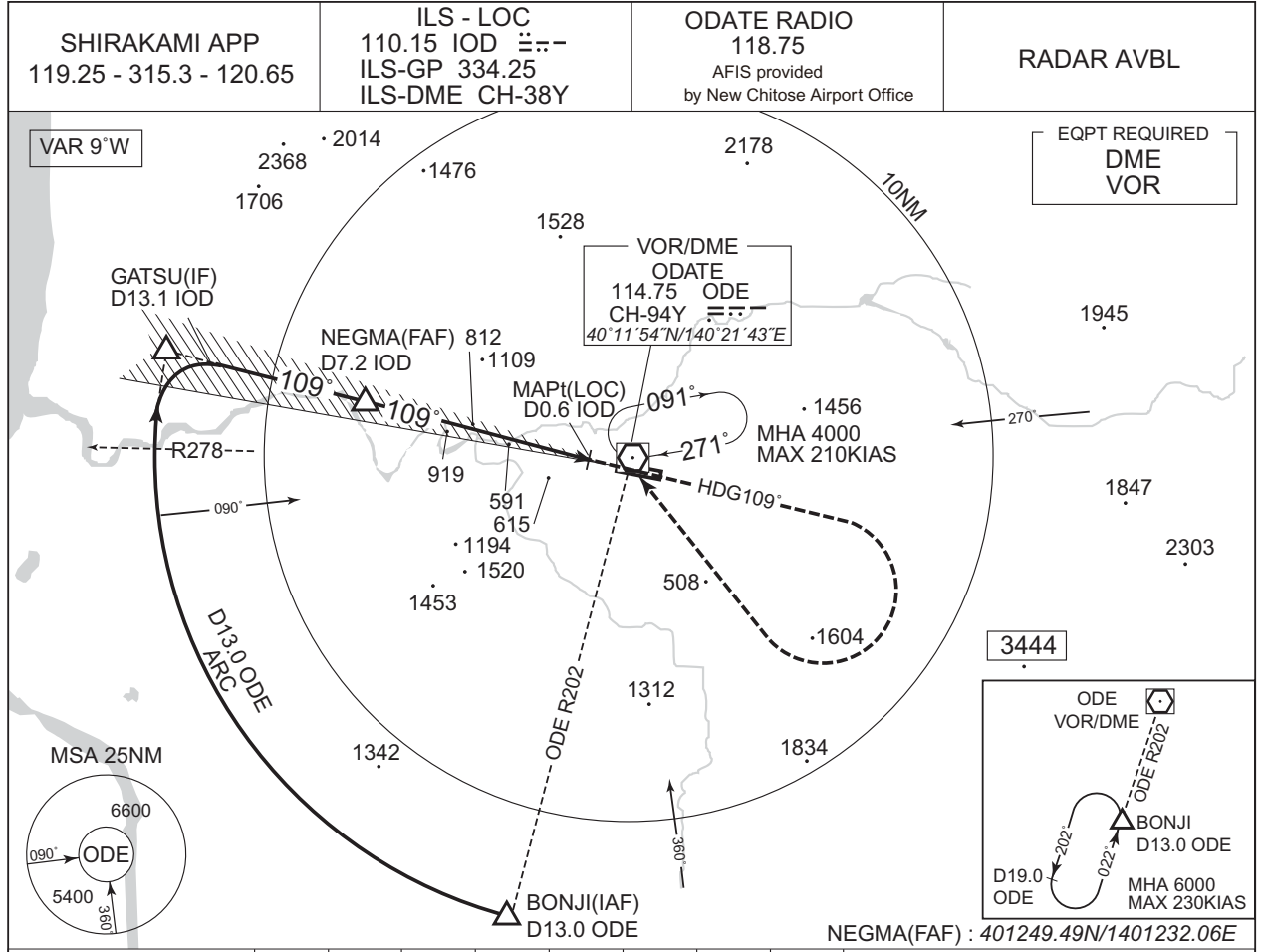
From BONJI at or above 6000FT, to TEBAR, to NOSSY at or above 4000FT.

Serial Number	Path Descriptor	Waypoint Identifier	Fly Over	Course °M(°T)	Magnetic Variation	Distance (NM)	Turn Direction	Altitude (FT)	Speed (KIAS)	Vertical Angle	Navigation Specification
001	IF	BONJI	-	-	-8.8	-	-	+6000	-	-	RNP1
002	TF	TEBAR	-	335 (326.0)	-8.8	10.0	-	-	-	-	RNP1
003	TF	NOSSY	-	357 (347.8)	-8.8	6.0	-	+4000	-	-	RNP1

INSTRUMENT APPROACH CHART

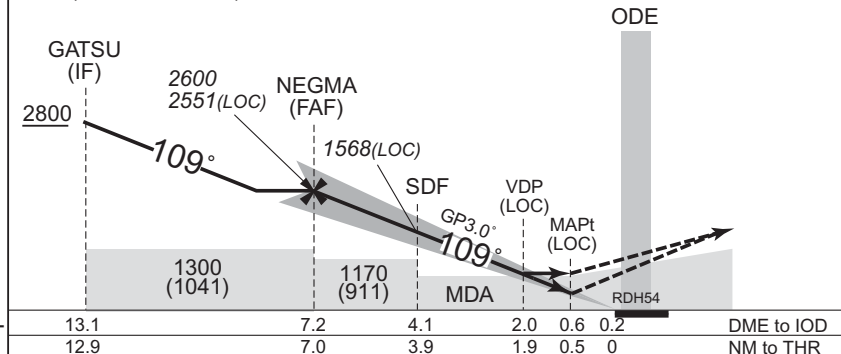
RJSR / ODATE-NOSHIRO

ILS Z or LOC Z RWY11



CHANGE : ATC call sign and FREQ. Description of RADAR Service. Missed APCH PROC.

NM to IOD	FAF	7	6	5	4	3	2	MAPt
ALT (3.0° APCH Path)	2551	2487	2169	1850	1532	1214	895	-



MISSED APPROACH
Climb to 2200FT on HDG109°,
turn right, direct to ODE
VOR/DME and hold at 4000FT.
Contact SHIRAKAMI APP.
Timing not authorized for defining the MAPt.

Missed APCH climb gradient MNM 5.0%

MINIMA		THR elev. 259		AD elev. 276		
CAT	CAT I		LOC		CIRCLING	
	DA(H)	RVR/CMV	MDA(H)	RVR/CMV	MDA(H)	VIS
A	459 (200)	550	870 (611)	1000	870 (594)	1600
B				1200		
C				890 (614)	2400	
D				1600	920 (644)	3200

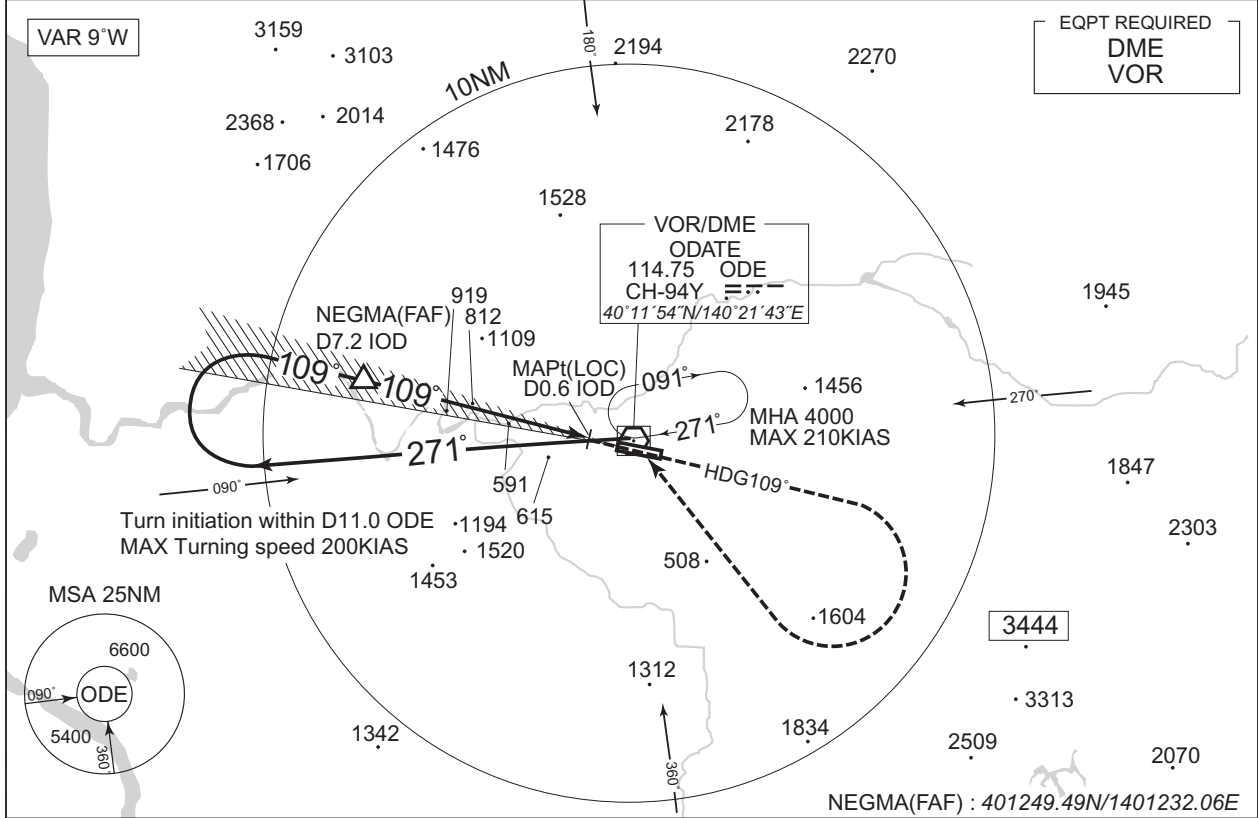
MINIMA with Missed APCH climb gradient of 2.5% are not established.
Circling to SOUTH side of RWY only.

INSTRUMENT APPROACH CHART

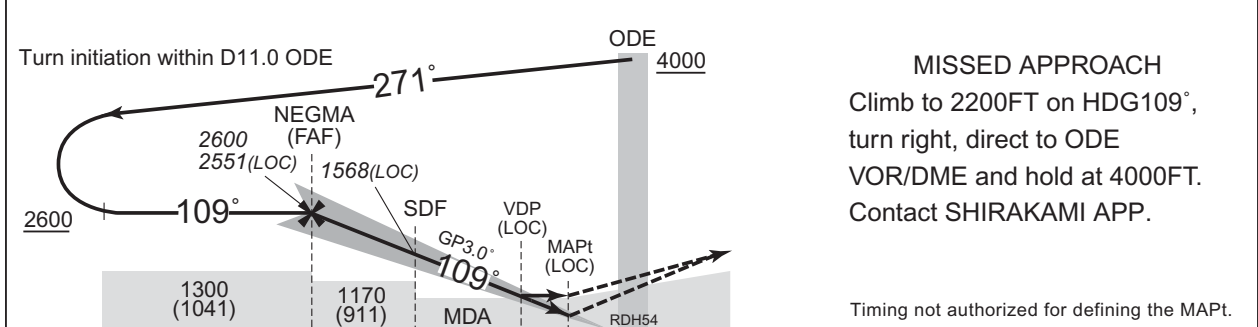
RJSR / ODATE-NOSHIRO

ILS Y or LOC Y RWY11

SHIRAKAMI APP 119.25 - 315.3 - 120.65	ILS - LOC 110.15 IOD ILS-GP 334.25 ILS-DME CH-38Y	ODATE RADIO 118.75 AFIS provided by New Chitose Airport Office	RADAR AVBL
--	--	---	------------



NM to IOD	FAF	7	6	5	4	3	2	MAPt
ALT (3.0° APCH Path)	2551	2487	2169	1850	1532	1214	895	-



MISSED APPROACH
Climb to 2200FT on HDG109°, turn right, direct to ODATE VOR/DME and hold at 4000FT. Contact SHIRAKAMI APP.
Timing not authorized for defining the MAPt.

7.2	4.1	2.0	0.6	0.2	DME to IOD
7.0	3.9	1.9	0.5	0	NM to THR

Missed APCH climb gradient MNM 5.0%

MINIMA		THR elev. 259	AD elev. 276			
CAT	CAT I		LOC			
	DA(H)	RVR/CMV	MDA(H)			
A	459 (200)	550	870 (611)			
B				1000	870 (594)	1600
C				1200		
D				1600	890 (614)	2400
				920 (644)	3200	

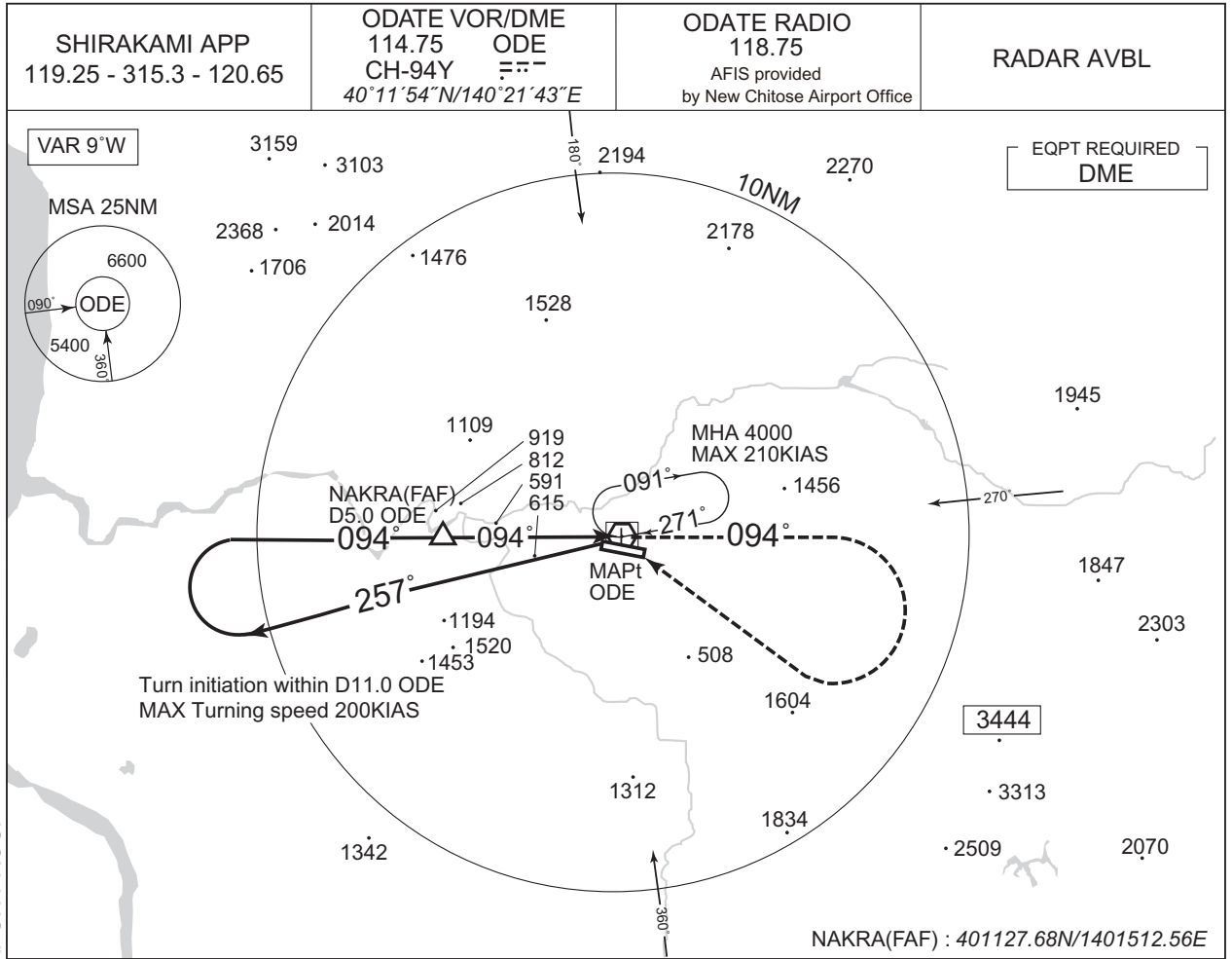
MINIMA with Missed APCH climb gradient of 2.5% are not established.
Circling to SOUTH side of RWY only.

CHANGE : ATC call sign and FREQ. Description of RADAR Service. Missed APCH PROC.

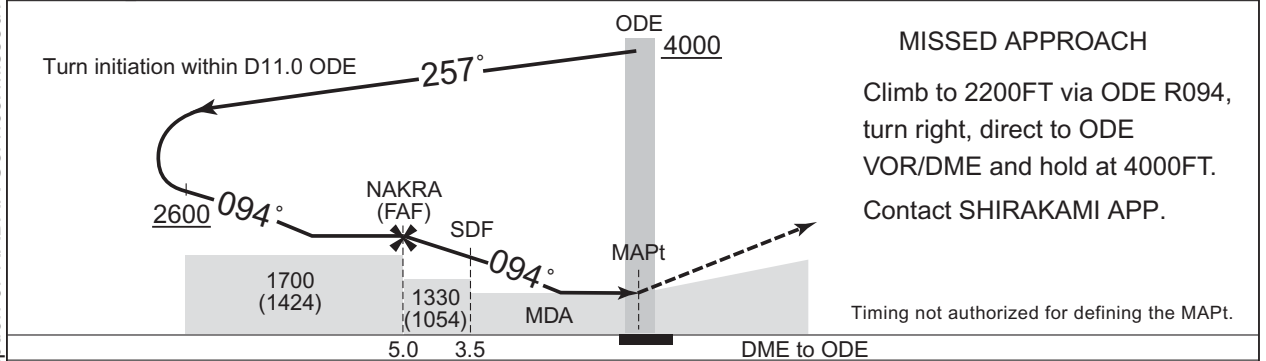
INSTRUMENT APPROACH CHART

RJSR / ODATE-NOSHIRO

VOR A



CHANGE : ATC call sign and FREQ. Description of RADAR Service. Missed APCH PROC.



Missed APCH climb gradient MNM 4.0%

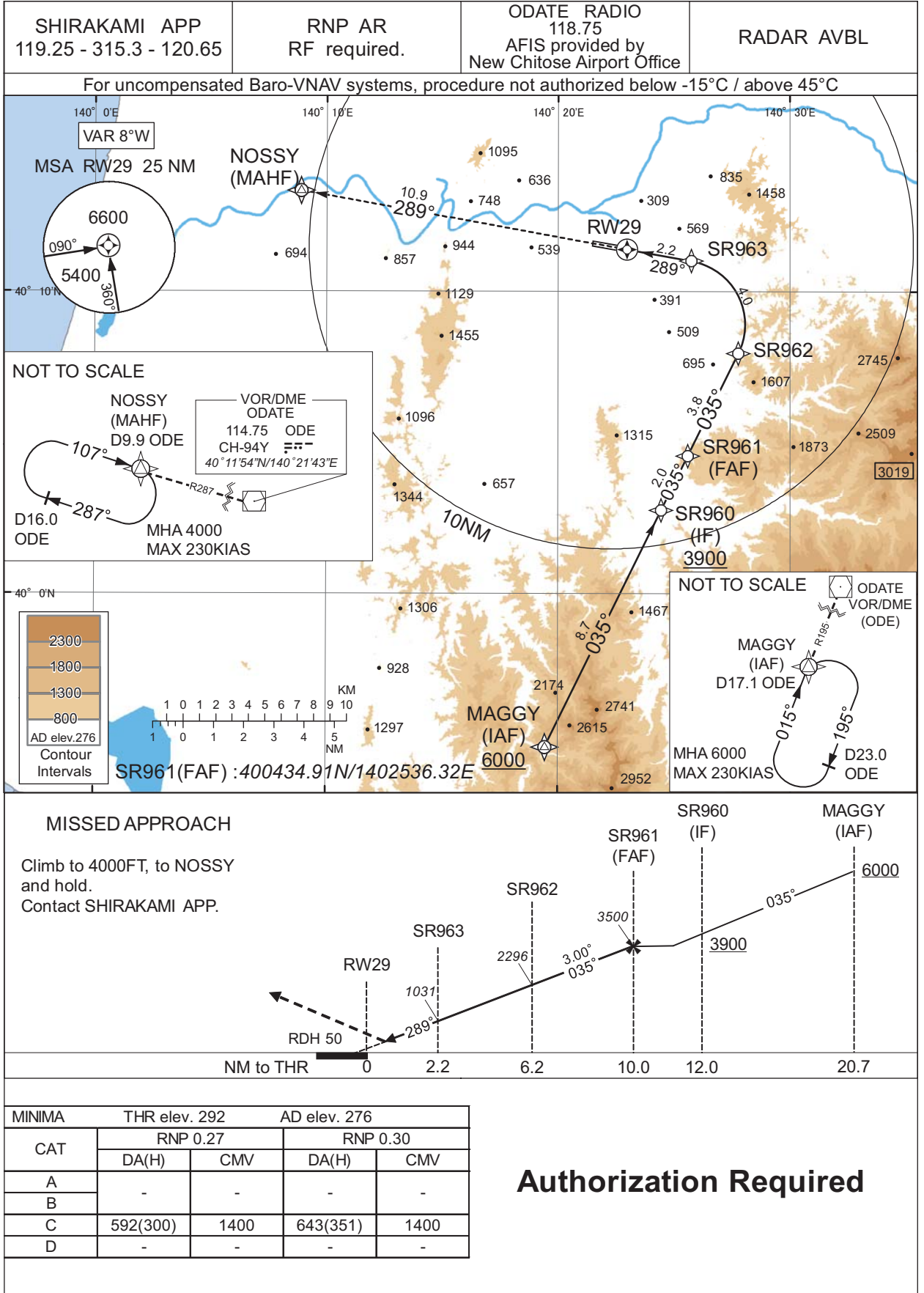
MINIMA		AD elev. 276
CAT	CIRCLING	
	MDA(H)	VIS
A	870 (594)	1600
B	870 (594)	1600
C	890 (614)	2400
D	920 (644)	3200

MINIMA with Missed APCH climb gradient of 2.5% are not established.
 Circling to SOUTH side of RWY only.

INSTRUMENT APPROACH CHART

RJSR / ODATE-NOSHIRO

RNP Z RWY29(AR)



CHANGE : ATC call sign and FREQ. Description of RADAR Service. Missed APCH PROC.

INSTRUMENT APPROACH CHART

RJSR / ODATE-NOSHIRO

RNP Z RWY29(AR)

Coding Table

Serial Number	Path Descriptor	Waypoint Identifier	Fly Over	Course °M(°T)	Magnetic Variation	Distance (NM)	Turn Direction	Altitude (FT)	Speed (KIAS)	VPA/RDH (°/FT)	RNP Value
001	IF	MAGGY	-	-	-8.5	-	-	+6000	-	-	-
002	TF	SR960	-	035 (026.1)	-8.5	8.7	-	+3900	-	-	1.0
003	TF	SR961	-	035 (026.1)	-8.5	2.0	-	3500	-	-	1.0
004	TF	SR962	-	035 (026.1)	-8.5	3.8	-	2296	-	-3.00	0.27 0.30
005	RF Center: SRRF1 r=2.15NM	SR963	-	-	-8.5	4.0	L	1031	-	-3.00	0.27 0.30
006	TF	RW29	Y	289 (280.1)	-8.5	2.2	-	342	-	-3.00/50	0.27 0.30
007	TF	NOSSY	-	289 (280.3)	-8.5	10.9	-	4000	-	-	1.0

Waypoint Coordinates

Waypoint Identifier	Coordinates	RF Arc Center Identifier	Coordinates
MAGGY	395456.61N / 1401926.80E	SRRF1	400855.54N / 1402516.24E
SR960	400247.11N / 1402427.29E		
SR961	400434.91N / 1402536.32E		
SR962	400758.60N / 1402746.93E		
SR963	401102.48N / 1402545.54E		
RW29	401125.10N / 1402258.78E		
NOSSY	401321.82N / 1400854.64E		

CHANGE : PROC renamed.

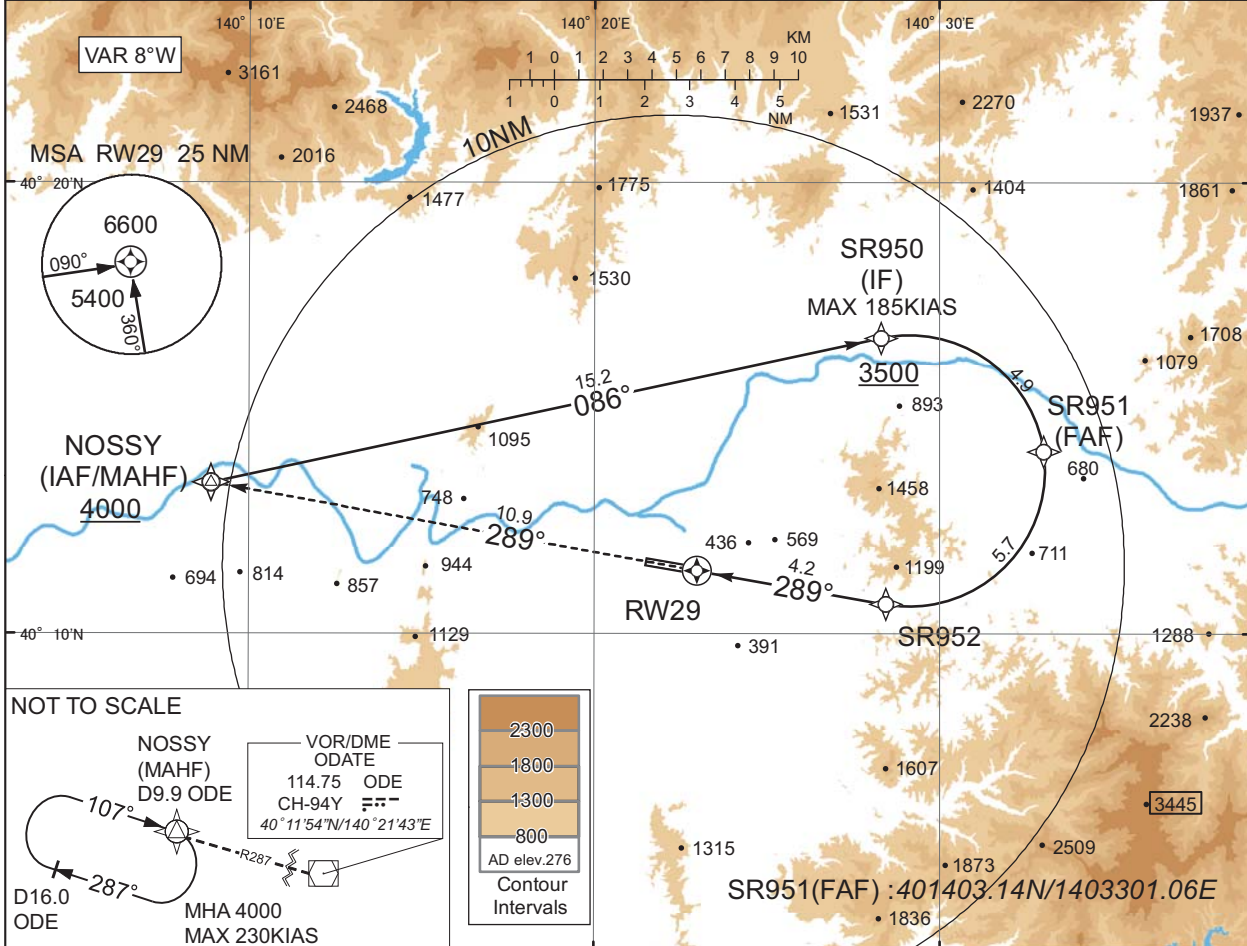
INSTRUMENT APPROACH CHART

RJSR / ODATE-NOSHIRO

RNP Y RWY29(AR)

SHIRAKAMI APP 119.25 - 315.3 - 120.65	RNP AR RF required.	ODATE RADIO 118.75 AFIS provided by New Chitose Airport Office	RADAR AVBL
--	------------------------	---	------------

For uncompensated Baro-VNAV systems, procedure not authorized below -15°C / above 45°C



NOT TO SCALE

NOSSY (MAHF)
D9.9 ODE

VOR/DME
ODATE
114.75 ODE
CH-94Y

40°11'54"N/140°21'43"E

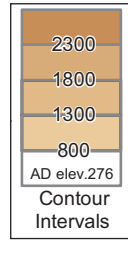
MHA 4000
MAX 230KIAS

D16.0 ODE

107°

287°

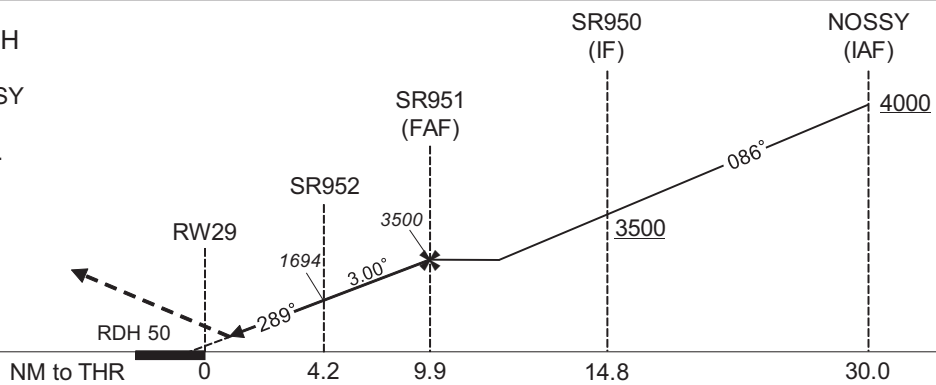
R287



CHANGE : ATC call sign and FREQ. Description of RADAR Service. Missed APCH PROC.

MISSED APPROACH

Climb to 4000FT, to NOSSY and hold.
Contact SHIRAKAMI APP.



MINIMA	THR elev. 292		AD elev. 276	
	RNP 0.27		RNP 0.30	
CAT	DA(H)	CMV	DA(H)	CMV
A	-	-	-	-
B	-	-	-	-
C	592(300)	1400	643(351)	1400
D	-	-	-	-

Authorization Required

INSTRUMENT APPROACH CHART

RJSR / ODATE-NOSHIRO

RNP Y RWY29(AR)

Coding Table

Serial Number	Path Descriptor	Waypoint Identifier	Fly Over	Course °M(°T)	Magnetic Variation	Distance (NM)	Turn Direction	Altitude (FT)	Speed (KIAS)	VPA/ RDH (°/FT)	RNP Value
001	IF	NOSSY	-	-	-8.5	-	-	+4000	-	-	-
002	TF	SR950	-	086 (077.7)	-8.5	15.2	-	+3500	-185	-	1.0
003	RF Center: SRRF2 r=3.00NM	SR951	-	-	-8.5	4.9	R	3500	-	-	1.0
004	RF Center: SRRF2 r=3.00NM	SR952	-	-	-8.5	5.7	R	1694	-	-3.00	0.27 0.30
005	TF	RW29	Y	289 (280.1)	-8.5	4.2	-	342	-	-3.00/50	0.27 0.30
006	TF	NOSSY	-	289 (280.3)	-8.5	10.9	-	4000	-	-	1.0

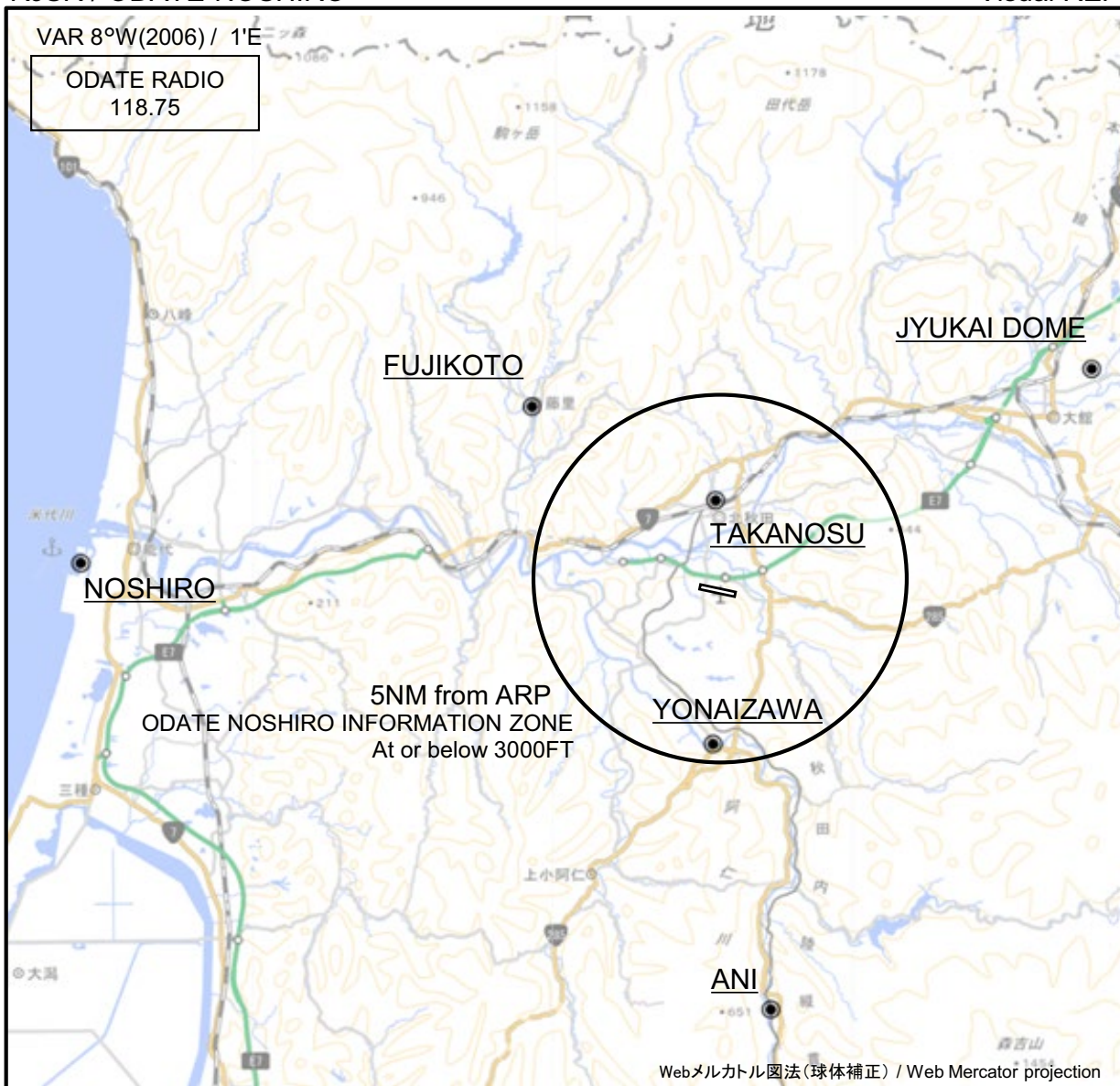
Waypoint Coordinates

Waypoint Identifier	Coordinates	RF Arc Center Identifier	Coordinates
SR950	401634.48N / 1402818.75E	SRRF2	401338.11N / 1402908.01E
SR951	401403.14N / 1403301.06E		
SR952	401040.53N / 1402826.85E		
RW29	401125.10N / 1402258.78E		
NOSSY	401321.82N / 1400854.64E		

CHANGE : PROC renamed.

RJSR / ODATE-NOSHIRO

Visual REP



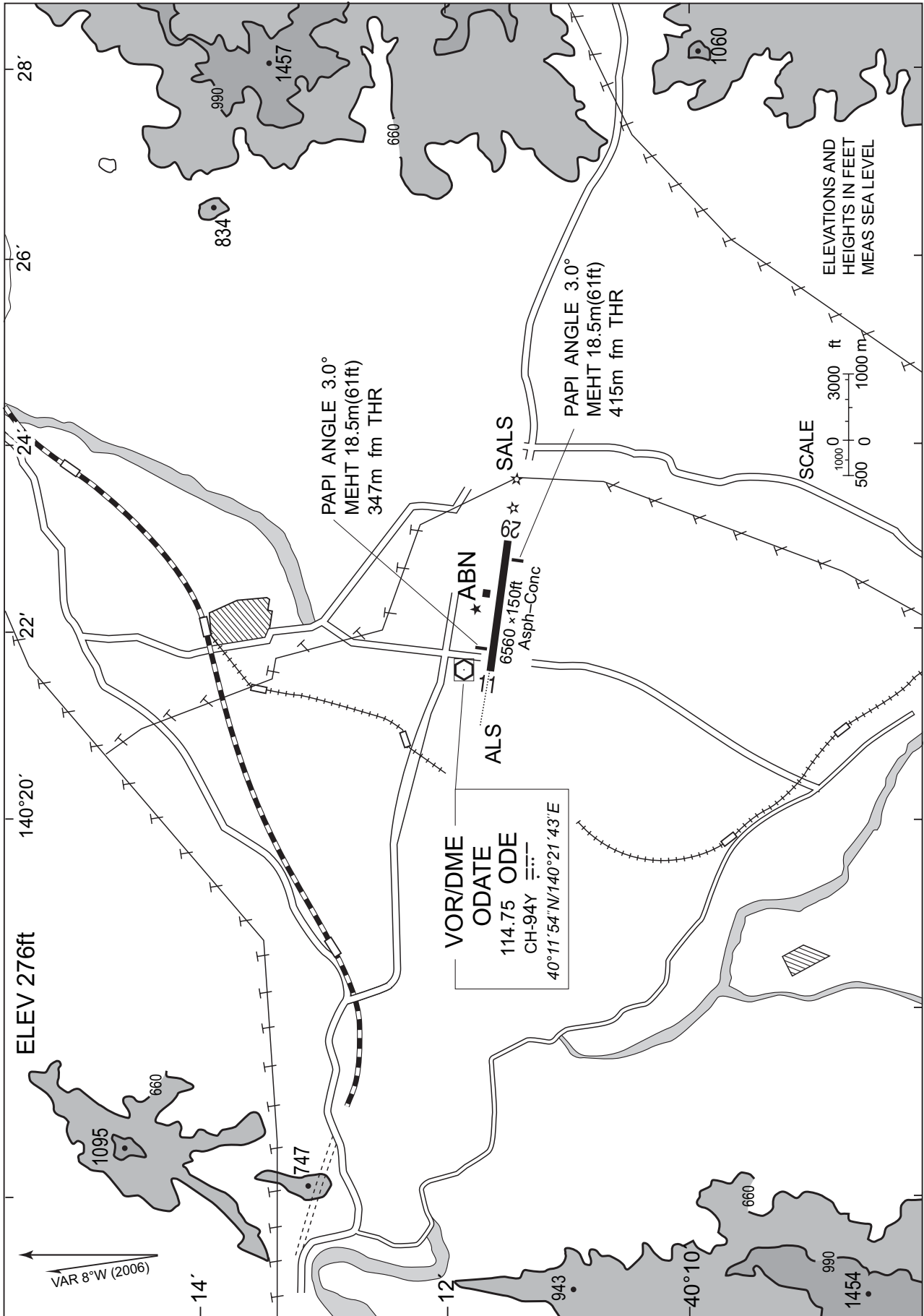
※図中に標高を示す数字がある場合、単位はメートル(m)である。The unit of measurement used to express elevation is meter(m).

CHANGE : Call sign(REMOTE→RADIO).

Call sign	BRG / DIST from ARP	Remarks
樹海ドーム Jyukai Dome	058°T / 11.6NM	大館市白色ドーム White Dome Odate City
藤琴 Fujikoto	314°T / 7.2NM	粕毛川・藤琴川交点 Intersection Kasuge and Fujikoto River
鷹巣 Takanosu	357°T / 2.5NM	JR駅北側 North of JR Station
能代 Noshiro	272°T / 17.3NM	能代港 Noshiro Harbor
米内沢 Yonaizawa	183°T / 4.2NM	内陸線米内沢駅南側米内沢橋 Bridge
阿仁 Ani	173°T / 11.6NM	内陸線阿仁合駅 Station

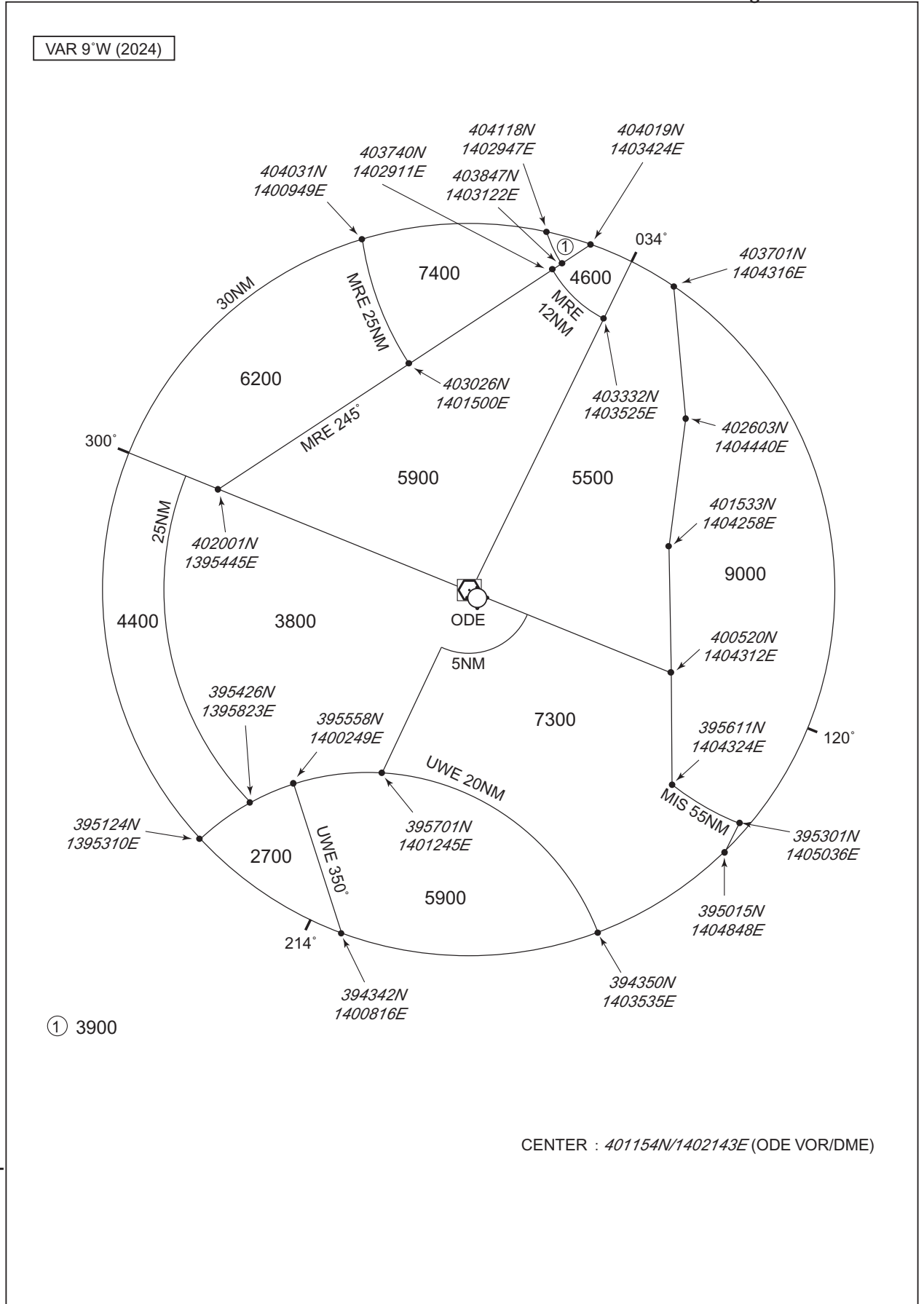
RJSR / ODATE-NOSHIRO

LDG CHART



RJSR / ODATE-NOSHIRO

Minimum Vectoring Altitude CHART



CHANGE : Update.

CENTER : 401154N/1402143E (ODE VOR/DME)