

STANDARD DEPARTURE CHART - INSTRUMENT

RJST / MATSUSHIMA

SID and TRANSITION

MATSUSHIMA REVERSAL THREE DEPARTURE

RWY07 : Climb RWY HDG to 600FT, turn right HDG 182°...  
 RWY25 : Climb RWY HDG to 600FT, turn left HDG 092°...  
 ...to intercept and proceed via MXT R137 to 20.0DME, turn left, direct to  
 MXT TACAN.  
 Cross MXT TACAN at assigned altitude.  
 Note RWY07 : 4.0% climb gradient required up to 600FT.  
 OBST ALT 919 FT located at 5.8NM 080° FM end of RWY07.

SOUTH FIVE DEPARTURE

RWY07 : Climb RWY HDG to 600FT, turn right HDG 182°...  
 RWY25 : Climb RWY HDG to 600FT, turn left HDG 092°...  
 ...to intercept and proceed via MXT R137 to MATSU.  
 Cross MATSU at or above FL150 for HYAKURI TRANSITION.  
 Cross MATSU at or above FL210 for DAIGO TRANSITION.  
 Note RWY07 : 4.0% climb gradient required up to 600FT.  
 OBST ALT 919 FT located at 5.8NM 080° FM end of RWY07.

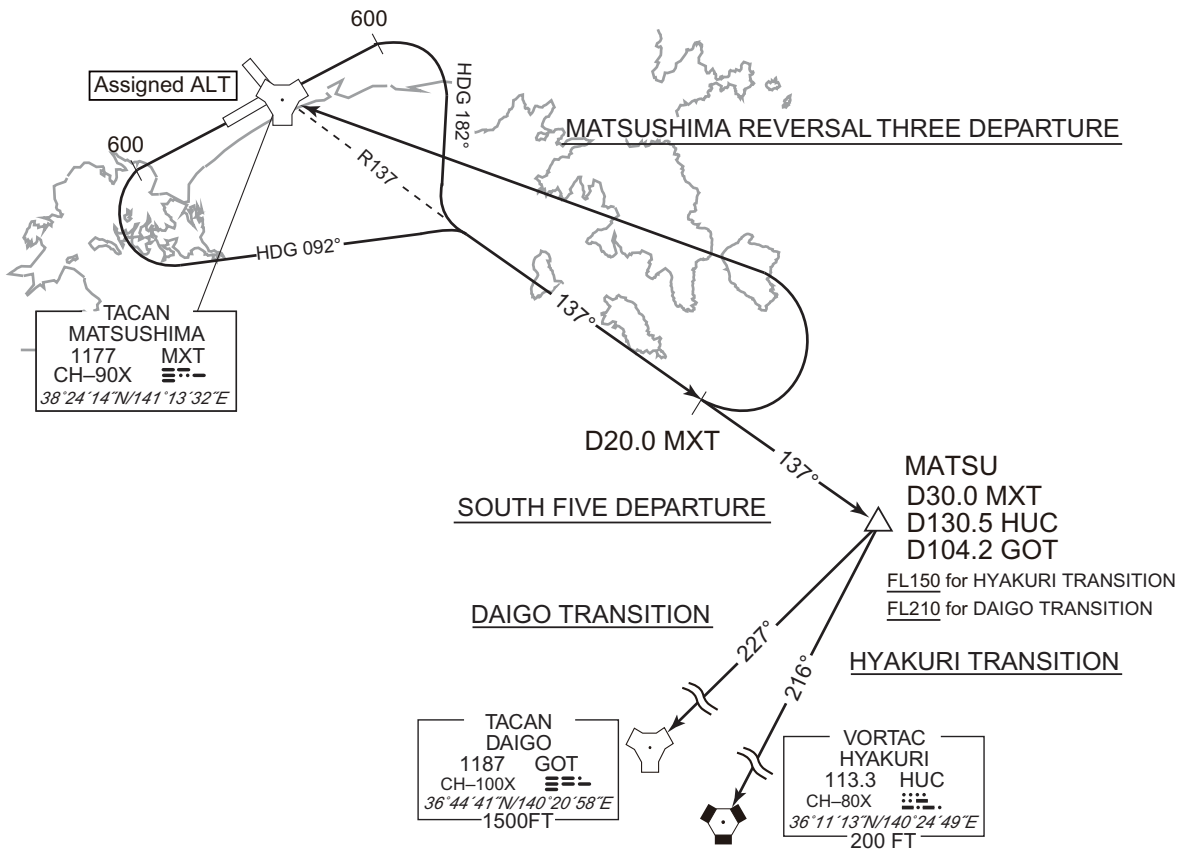
HYAKURI TRANSITION

From over MATSU, via HUC R036 to HUC VORTAC.  
 Note : This TRANSITION is for TACAN equipped aircraft only.

DAIGO TRANSITION

From over MATSU, via GOT R047 to GOT TACAN.

CHANGE : PROC renamed(MATSUSHIMA REVERSAL THREE DEPARTURE, SOUTH FIVE DEPARTURE). PROC course(MATSUSHIMA REVERSAL THREE DEPARTURE, SOUTH FIVE DEPARTURE). ALT restriction for RWY07. Note added(HYAKURI TRANSITION). Note(MATSUSHIMA REVERSAL THREE DEPARTURE, SOUTH FIVE DEPARTURE).



STANDARD DEPARTURE CHART - INSTRUMENT

RJST / MATSUSHIMA

SID and TRANSITION

NORTH FOUR DEPARTURE

RWY07 : Climb RWY HDG to 600FT, turn left,...

RWY25 : Climb RWY HDG to 600FT, turn left HDG 021°...

...to intercept and proceed via MXT R051 to RIASU.

Cross RIASU at or above FL160 for MIYAKO TRANSITION.

Cross RIASU at or above FL180 for MISAWA TRANSITION.

Note RWY07 : 5.0% climb gradient required up to 1500FT.

OBST ALT 1585FT located at 7.4NM 060° FM end of RWY07.

RIASU THREE DEPARTURE

RWY07 : Climb RWY HDG to 600FT, turn right,...

RWY25 : Climb RWY HDG to 600FT, turn left HDG 030°...

...to intercept and proceed via MXT R075 to 30.0DME, via MXT 30.0DME counterclockwise ARC to RIASU.

Cross RIASU at or above FL160 for MIYAKO TRANSITION.

Cross RIASU at or above FL180 for MISAWA TRANSITION.

Note RWY07 : 6.0% climb gradient required up to 1500FT.

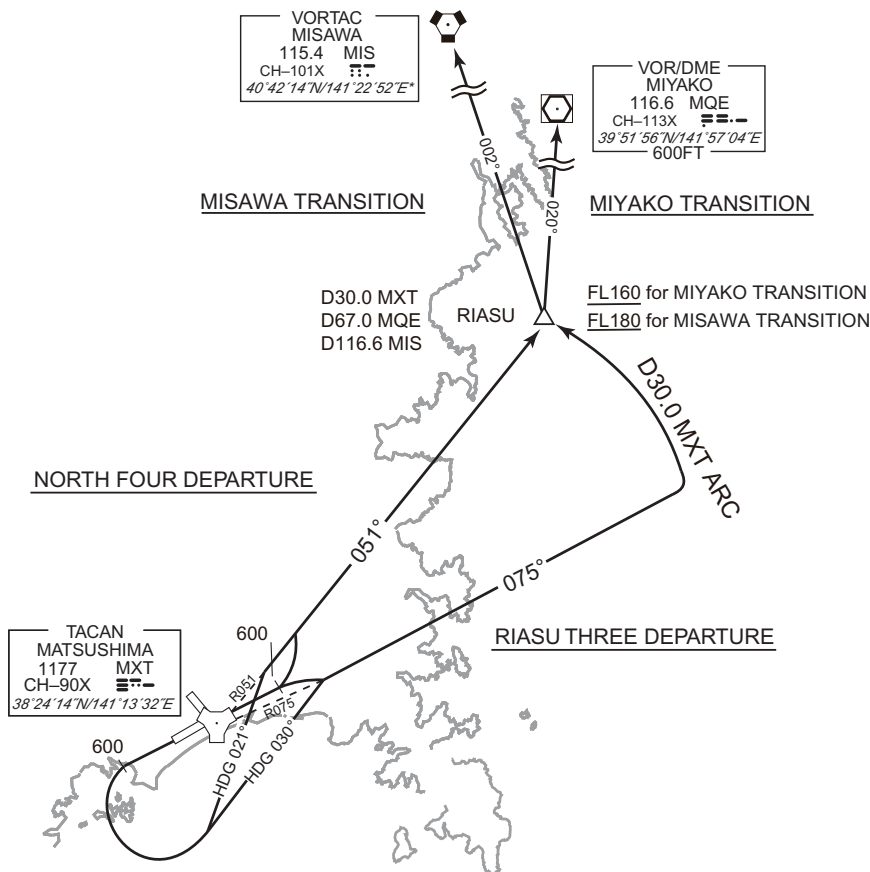
OBST ALT 919 FT located at 5.8NM 080° FM end of RWY07.

MIYAKO TRANSITION

From over RIASU, via MQE R200 to MQE VOR/DME.

MISAWA TRANSITION

From over RIASU, via MIS R182 to MIS VORTAC.



CHANGE : PROC renamed(NORTH FOUR DEPARTURE, RIASU THREE DEPARTURE), PROC course(NORTH FOUR DEPARTURE, RIASU THREE DEPARTURE), EAST REVERSAL TWO DEPARTURE abolished. ALT restriction for RWY07. Note(NORTH FOUR DEPARTURE, RIASU THREE DEPARTURE).

STANDARD DEPARTURE CHART - INSTRUMENT

RJST / MATSUSHIMA

SID and TRANSITION

WEST FOUR DEPARTURE

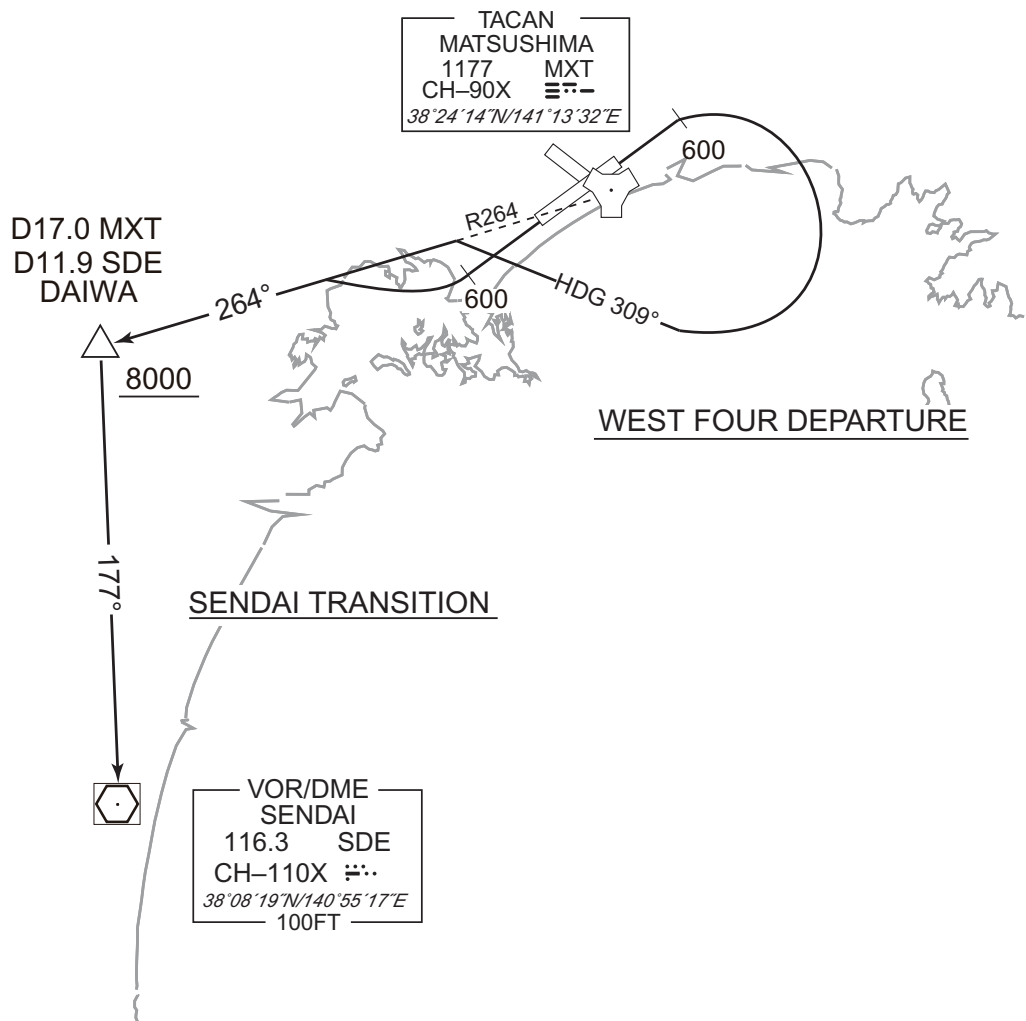
RWY07 : Climb RWY HDG to 600FT, turn right HDG 309°...  
 RWY25 : Climb RWY HDG to 600FT, turn right,...  
 ...to intercept and proceed via MXT R264 to DAIWA.  
 Cross DAIWA at or above 8000FT.

Note RWY07 : 4.0% climb gradient required up to 600FT.  
 OBST ALT 919FT located at 5.8NM 080° FM end of RWY07.

SENDAI TRANSITION

From over DAIWA, via SDE R357 to SDE VOR/DME.

CHANGE : PROC renamed(WEST FOUR DEPARTURE), PROC course(WEST FOUR DEPARTURE), NIIGATA TRANSITION abolished, ALT restriction for RWY07. Note(WEST FOUR DEPARTURE).



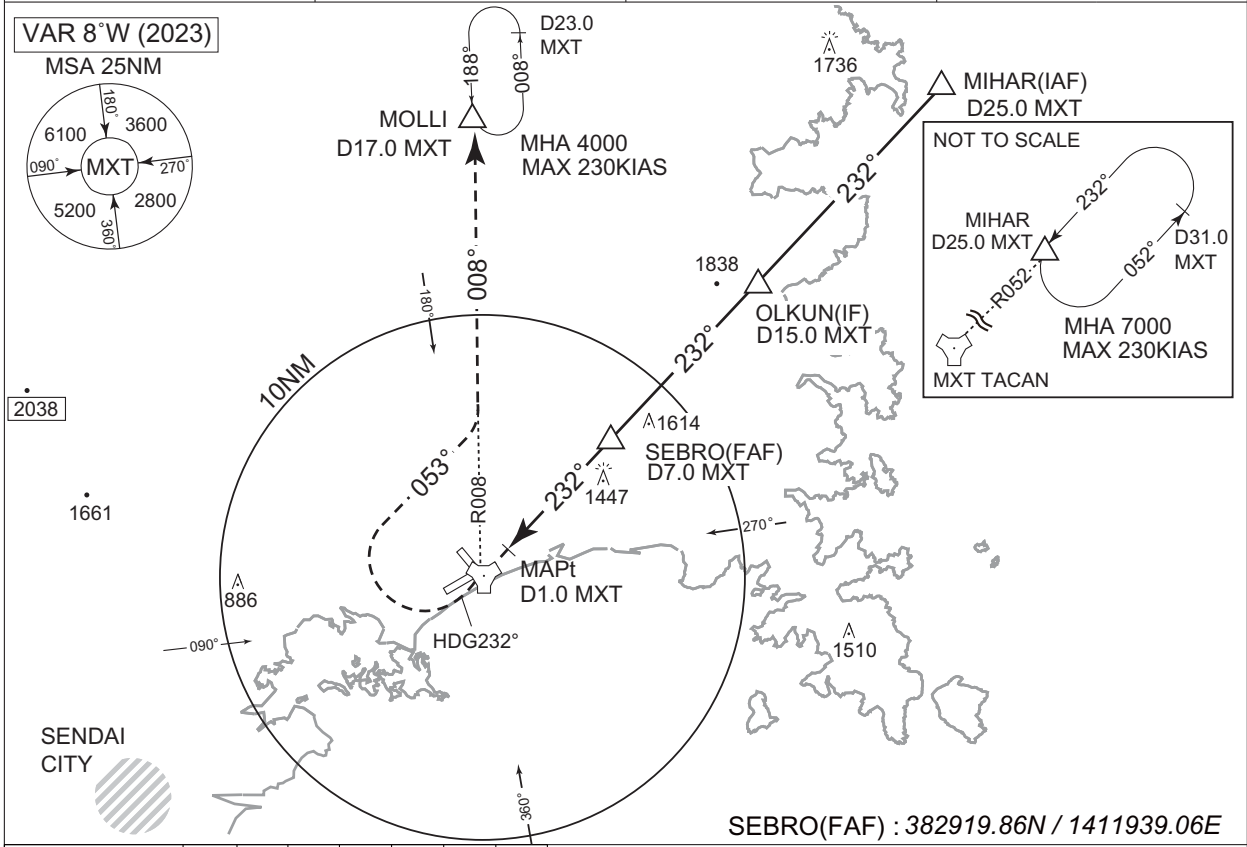
**INTENTIONALLY LEFT BLANK**

INSTRUMENT APPROACH CHART

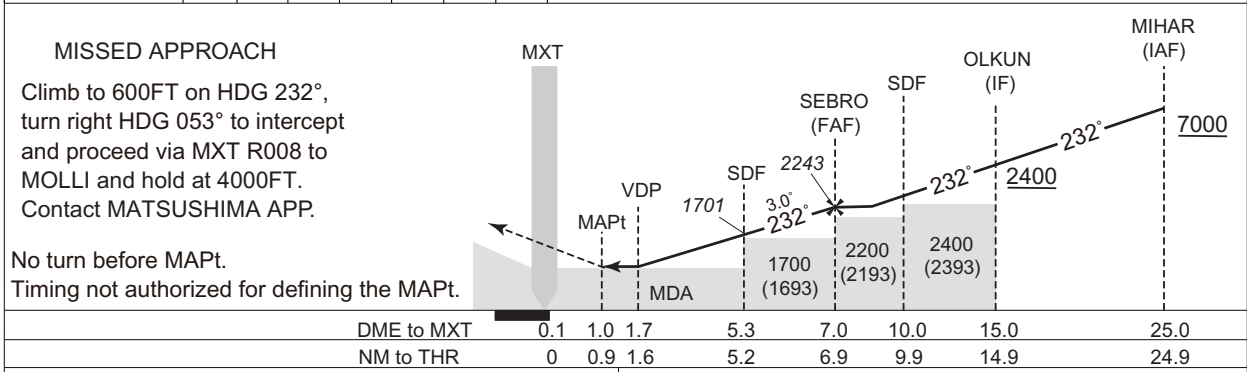
CHANGE : PROC renamed. PROC course. Missed APCH PROC. MINIMA. PROC ALT established. HLDG pattern. OLKUN, SEBRO established. ALT(3.0° APCH Path) established. THR ELEV. Circling restriction. DME to MXT. NM to THR added. VAR. MSA.

RJST / MATSUSHIMA TACAN Z RWY25

MATSUSHIMA APP 120.1 - 261.2 - 362.3	MATSUSHIMA TACAN MXT CH-90X	MATSUSHIMA TOWER 126.2 - 236.8 304.6 - 275.8G	GCA AVBL CALL MATSUSHIMA APP
---	-----------------------------------	---	------------------------------------



NM to MXT	MAPt	2	3	4	5	6	FAF
ALT (3.0° APCH Path)	-	697	969	1287	1606	1924	2243



<b>MINIMA</b>		THR elev. 4	AD elev. 7	
CAT			CIRCLING	
	MDA(H)	RVR/ CMV	MDA(H)	VIS
A	510 (503)	1500	560 (553)	1600
B		1800	600 (593)	2400
C		2000		3200
D				

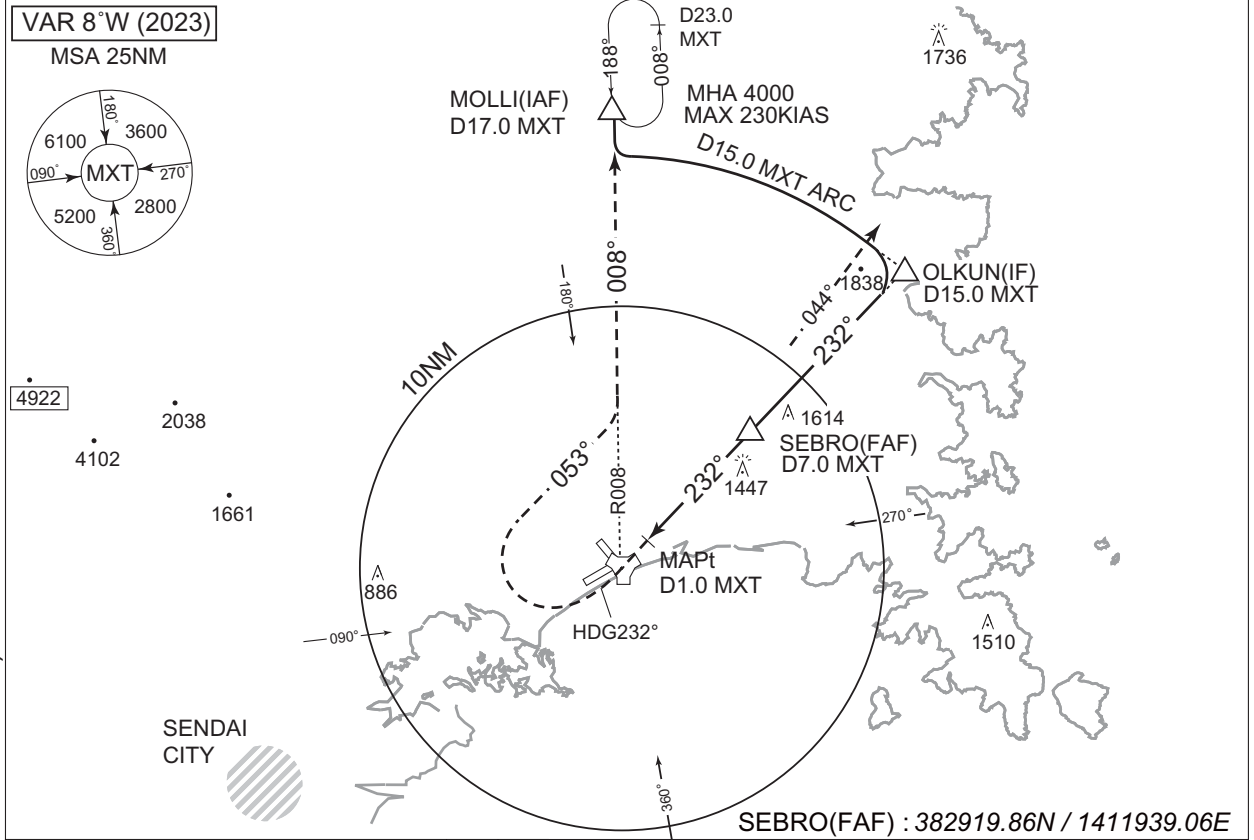
Circling to South side and RWY07 only.

INSTRUMENT APPROACH CHART

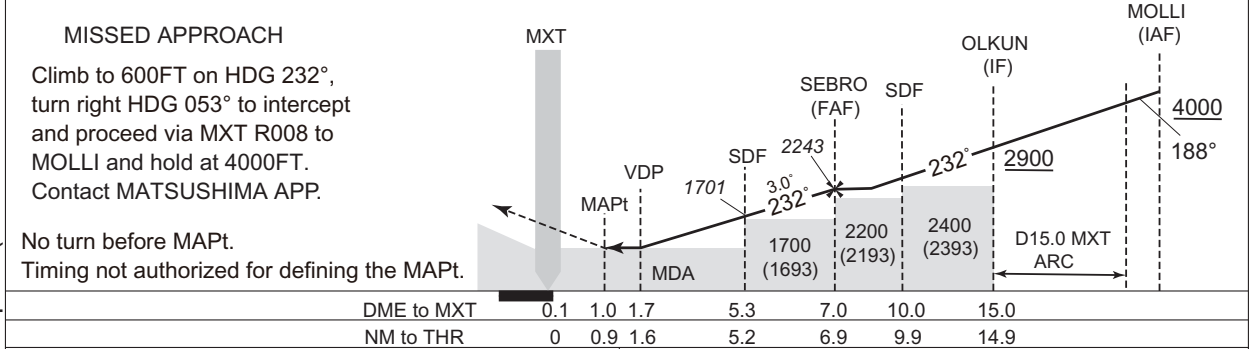
RJST / MATSUSHIMA

TACAN Y RWY25

MATSUSHIMA APP 120.1 - 261.2 - 362.3	MATSUSHIMA TACAN MXT CH-90X ≡≡≡	MATSUSHIMA TOWER 126.2 - 236.8 304.6 - 275.8G	GCA AVBL CALL MATSUSHIMA APP
---	---------------------------------------	---	------------------------------------



NM to MXT	MAPt	2	3	4	5	6	FAF
ALT (3.0° APCH Path)	-	697	969	1287	1606	1924	2243



MINIMA		THR elev. 4	AD elev. 7	
CAT	MDA(H)	RVR/ CMV	CIRCLING	
			MDA(H)	VIS
A	510 (503)	1500	560 (553)	1600
B				
C			600 (593)	2400
D				

Circling to South side and RWY07 only.

CHANGE : Correction of misdescription(Course FM MOLI to OLKUN deleted).