

STANDARD DEPARTURE CHART-INSTRUMENT

RJTA / ATSUGI

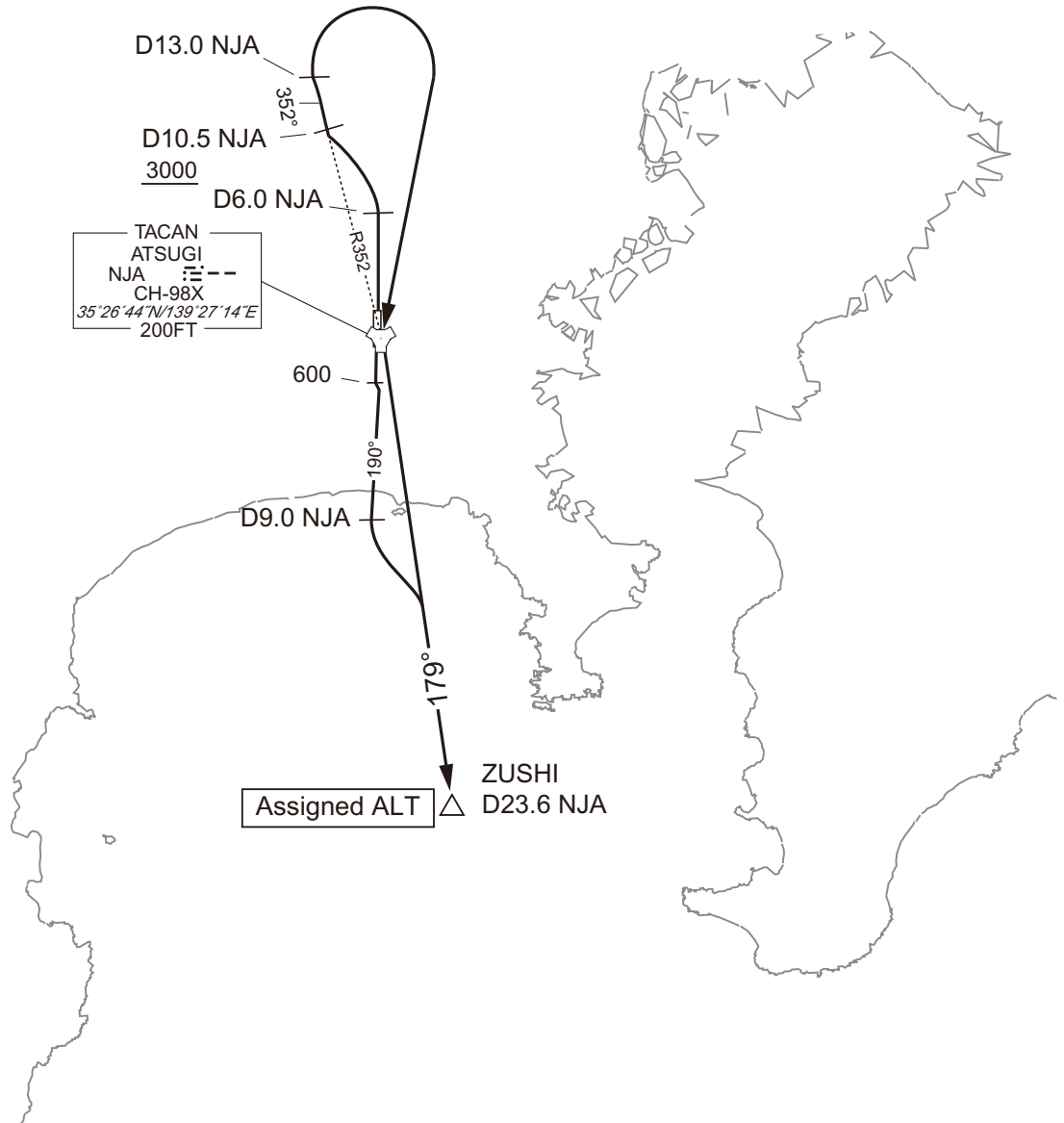
SID

ZUSHI ONE DEPARTURE

RWY01 : Climb RWY HDG to NJA 6.0DME, via NJA R352 to 13.0DME, turn right, direct to NJA TACAN, via NJA R179 to ZUSHI.
Cross NJA R352/10.5DME at or above 3000FT, cross ZUSHI at assigned altitude.

RWY19 : Climb RWY HDG to 600FT, via NJA R190 to 9.0DME, via NJA R179 to ZUSHI.
Cross ZUSHI at assigned altitude.

NOTE RWY01 : 4.0% climb gradient required up to 500FT.
OBST ALT 321FT locate at 0.5NM 357° FM end of RWY01.



CHANGE : New PROC.

STANDARD DEPARTURE CHART-INSTRUMENT

RJTA / ATSUGI

SID

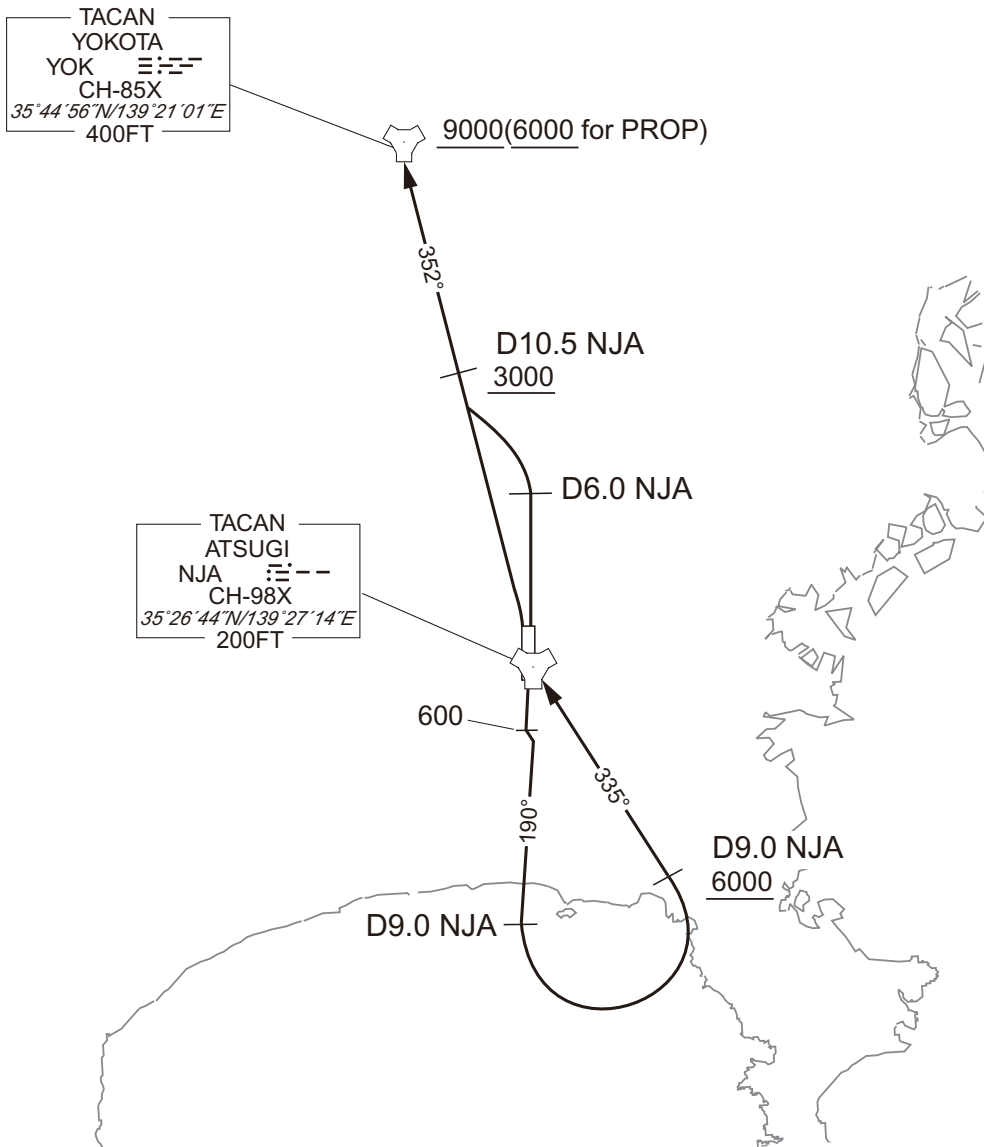
YOKOTA TWO DEPARTURE

RWY01 : Climb RWY HDG to NJA 6.0DME, via NJA R352 to YOK TACAN.
Cross NJA R352/10.5DME at or above 3000FT, cross YOK TACAN at or above 9000FT(at or above 6000FT for PROP).

RWY19 : Climb RWY HDG to 600FT, via NJA R190 to 9.0DME, turn left,
via NJA R155 to NJA TACAN, via NJA R352 to YOK TACAN.
Cross NJA R155/9.0DME at or above 6000FT, cross YOK TACAN at or above 9000FT(at or above 6000FT for PROP).

NOTE RWY01 : 4.0% climb gradient required up to 500FT.
OBST ALT 321FT locate at 0.5NM 357° FM end of RWY01.

CHANGE : PROC abolished(HATSU TWO DEPARTURE). PROC renamed(YOKOTA TWO DEPARTURE).
PROC course. Note added. ALT restriction established.

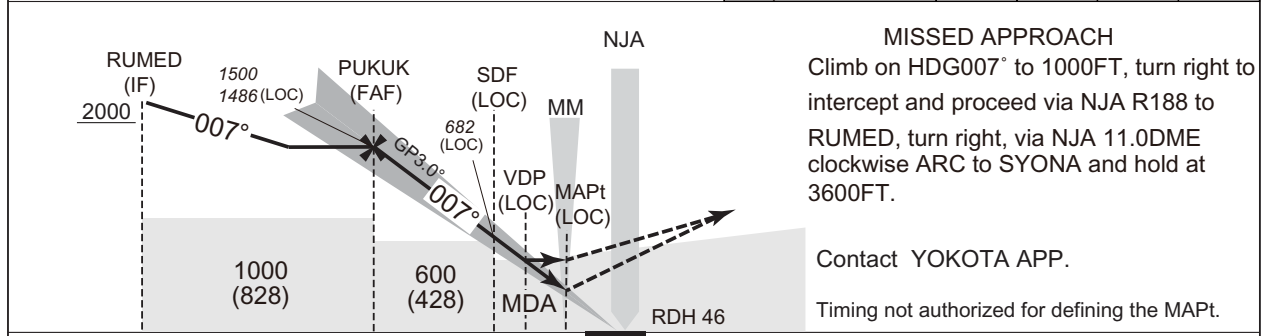
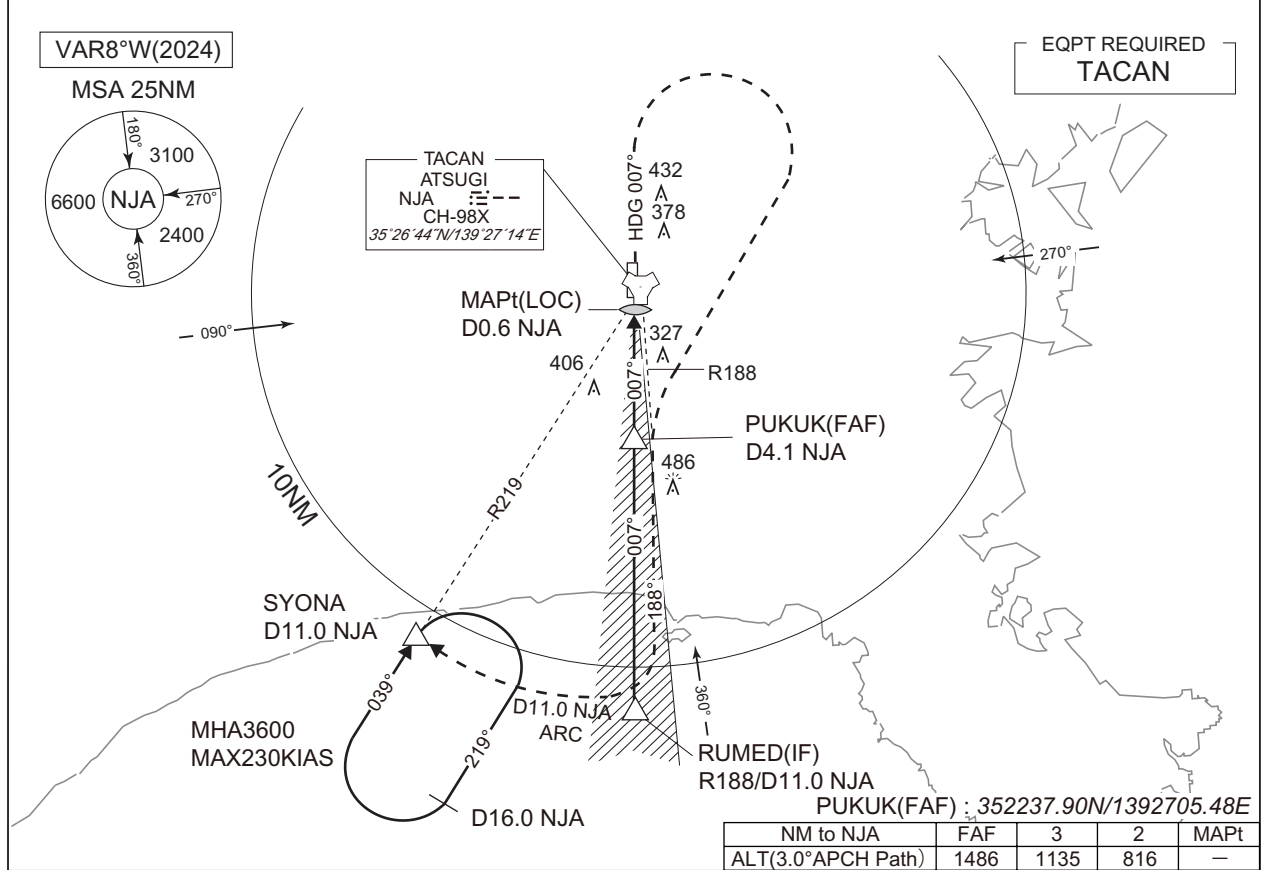


INSTRUMENT APPROACH CHART

RJTA / ATSUGI

ILS Z or LOC Z RWY01

YOKOTA APP 118.3-270.6 (above 5000) 123.8-261.4 (SFC to 5000)	ILS - LOC 111.3 IAG \dashv GP 332.3	ATSUGI TOWER 128.7 - 236.8 340.2 - 360.2	RADAR AVBL CALL YOKOTA APP
---	---	--	----------------------------------



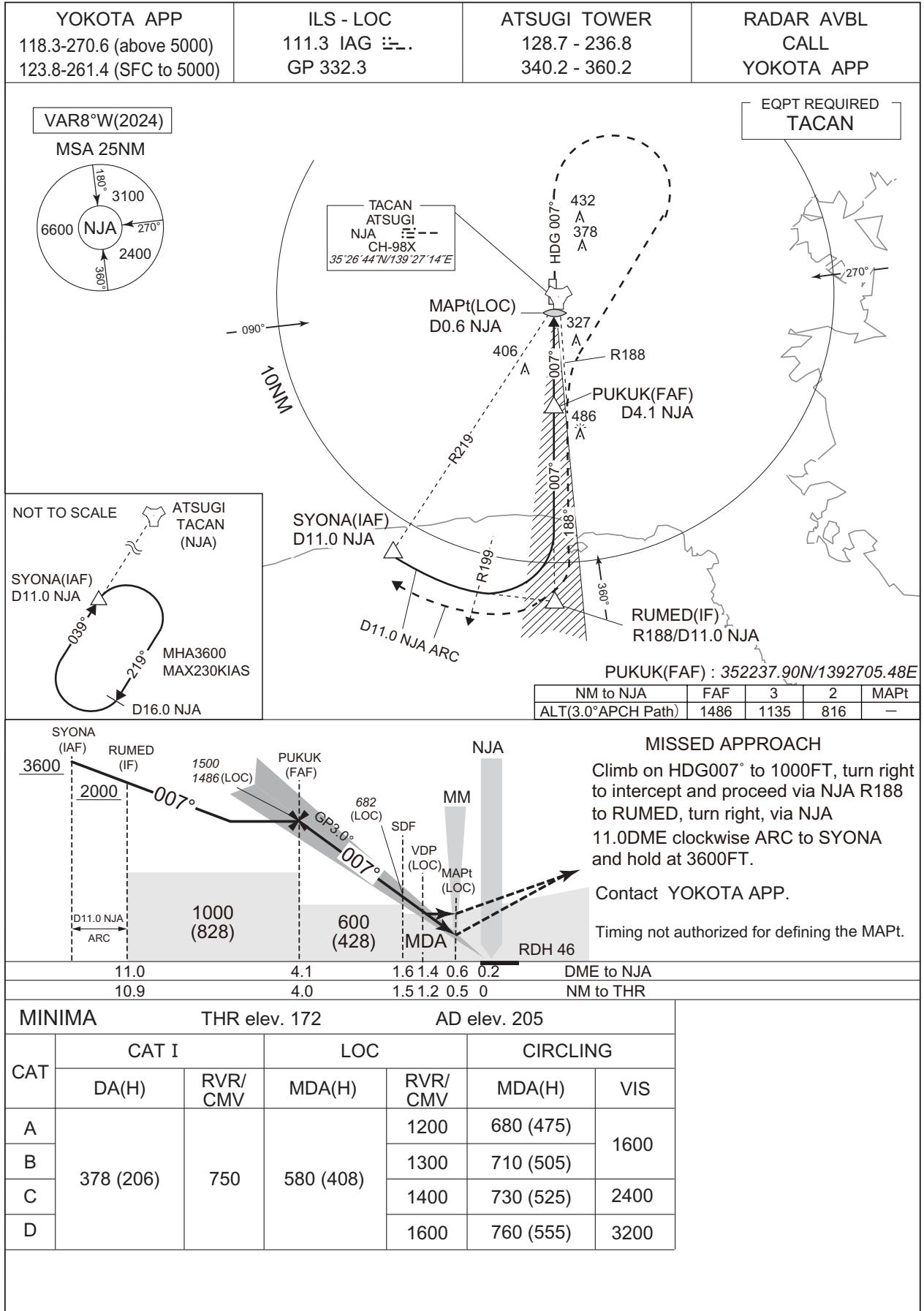
CHANGE : NM to NJA. NM to THR.

MINIMA		THR elev. 172		AD elev. 205		
CAT	CAT I		LOC		CIRCLING	
	DA(H)	RVR/CMV	MDA(H)	RVR/CMV	MDA(H)	VIS
A	378 (206)	750	580 (408)	1200	680 (475)	1600
B				1300	710 (505)	
C				1400	730 (525)	2400
D				1600	760 (555)	3200

INSTRUMENT APPROACH CHART

RJTA / ATSUGI

ILS Y or LOC Y RWY01



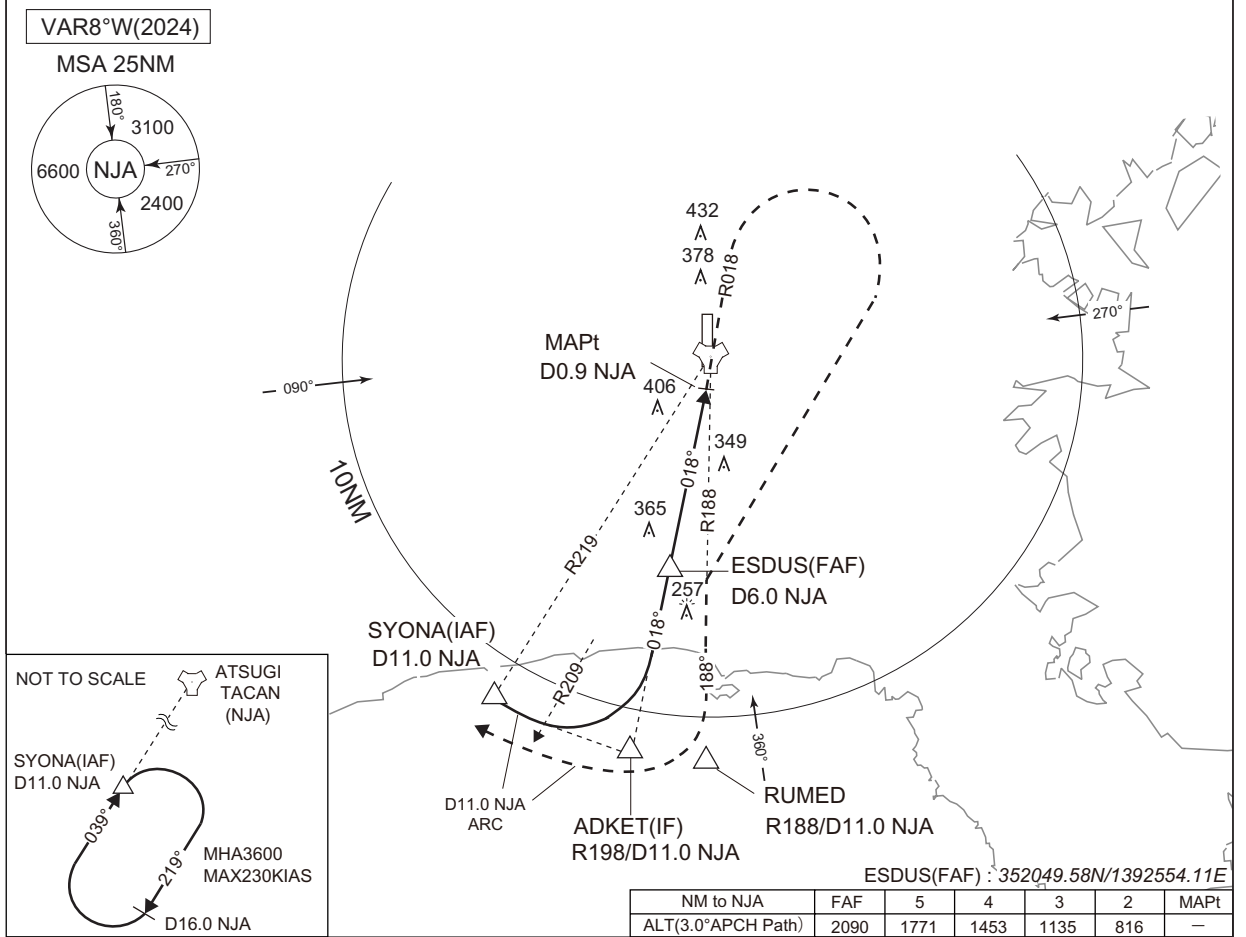
CHANGE : NM to NJA. PROC ALT at FAF.

INSTRUMENT APPROACH CHART

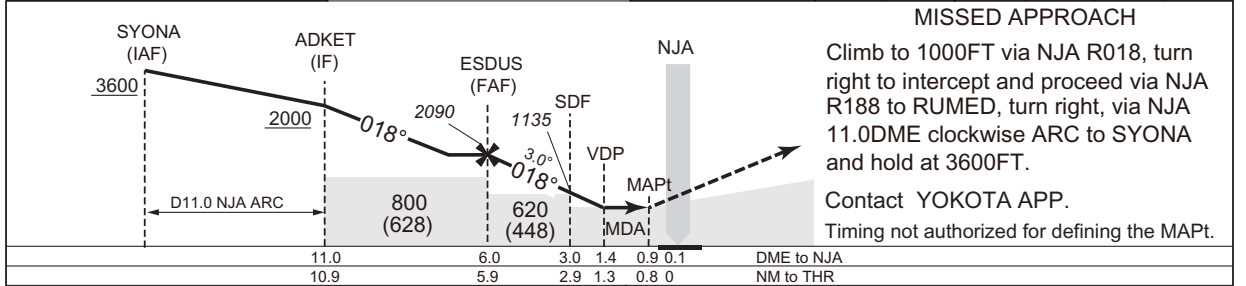
RJTA / ATSUGI TACAN RWY01

YOKOTA APP 118.3-270.6 (above 5000) 123.8-261.4 (SFC to 5000)	ATSUGI TACAN CH-98X NJA --- -- 35°26'44"N/139°27'14"E	ATSUGI TOWER 128.7 - 236.8 340.2 - 360.2	RADAR AVAILABLE CALL YOKOTA APP
--	---	---	--

CHANGE : PROC course. Missed APCH course. HLDG pattern(SYONA). ALT(3.0° APCH Path) established. MSA. VAR. VAR. ADKET, ESDUS, RUMED established. DME to NJA established. NM to THR established. THR elev. MINIMA.



NM to NJA	FAF	5	4	3	2	MAPt
ALT(3.0°APCH Path)	2090	1771	1453	1135	816	—



MISSED APPROACH
 Climb to 1000FT via NJA R018, turn right to intercept and proceed via NJA R188 to RUMED, turn right, via NJA 11.0DME clockwise ARC to SYONA and hold at 3600FT.
 Contact YOKOTA APP.
 Timing not authorized for defining the MAPt.

MINIMA	THR elev. 172	AD elev. 205	
--------	---------------	--------------	--

CAT	MINIMA		CIRCLING	
	MDA(H)	RVR/CMV	MDA(H)	VIS
A	600(428)	1200	680(475)	1600
B		1300	710(505)	
C		1400	730(525)	2400
D		1600	760(555)	3200