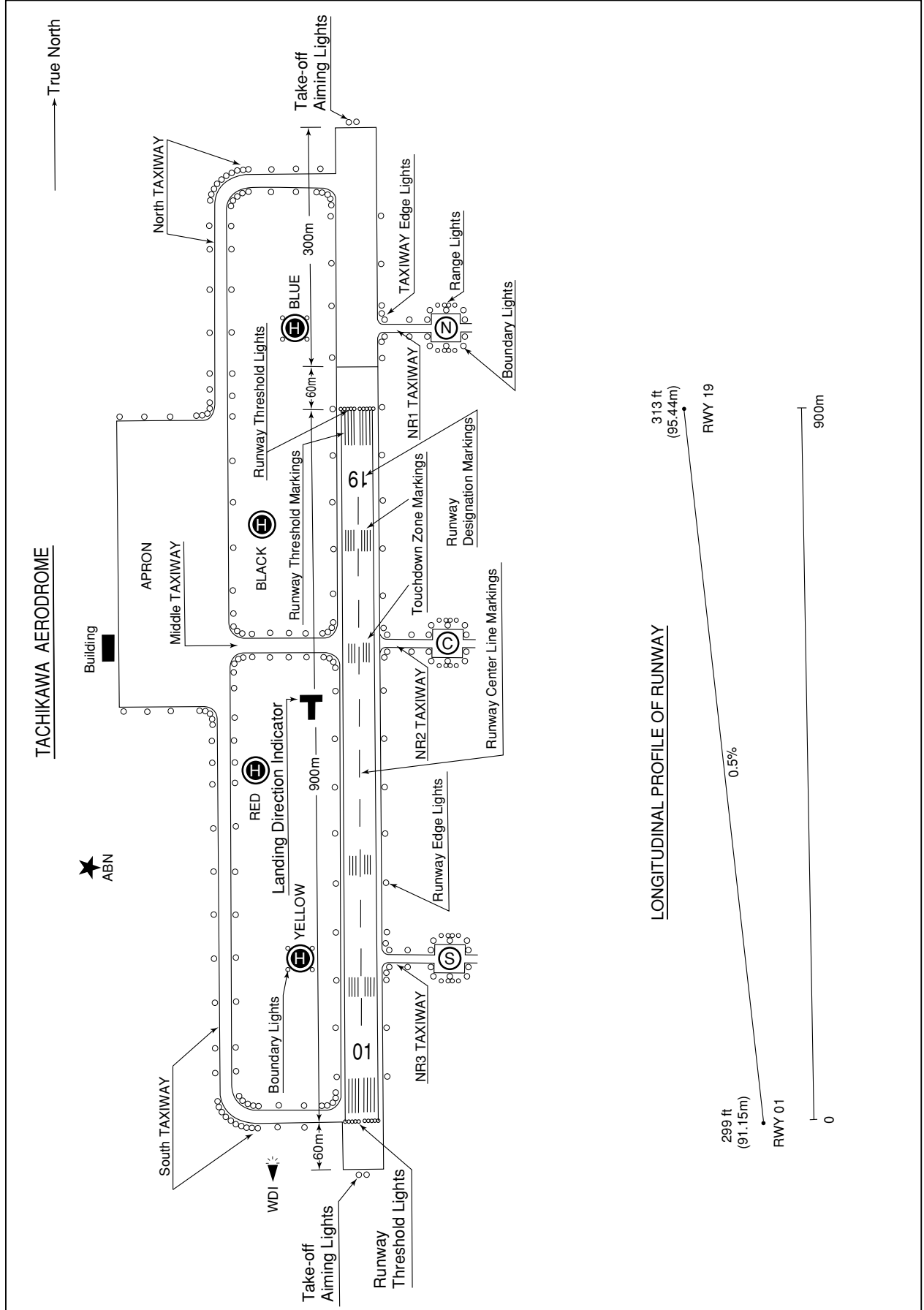


RJTC / TACHIKAWA

AD CHART



INTENTIONALLY LEFT BLANK

STANDARD DEPARTURE CHART-INSTRUMENT

RJTC / TACHIKAWA

SID

EDA SEVEN DEPARTURE

RWY01: Climb RWY HDG to 800FT, turn right HDG197° to intercept and proceed via TNT R152 to EDARR. Cross EDARR at assigned or specified altitude.

RWY19: Climb RWY HDG to 900FT, turn left HDG122° to intercept and proceed via TNT R152 to EDARR. Cross EDARR at assigned or specified altitude.

NOTE

1 When take off RWY01(RWY19), following minimum climb gradient should be maintained until passing 3000FT for noise abatement and obstacle avoidance.

Speed (Knots)	60	90	120	150	180	210
Rate (Feet/Min)	300	450	600	750	900	1050

2 Obstructions exists.

- a 648' MSL height Chimney at 1.5NM NE of RWY01 DER
- b 641' MSL height Chimney at 1.7NM NE of RWY01 DER
- c 647' MSL height Substation at 2.1NM NE of RWY01 DER
- d 669' MSL height Micro Antenna at 1NM ESE of RWY19 DER
- e 696' MSL height Building at 0.9NM SE of RWY19 DER

TACHIKAWA NORTHEAST SEVEN DEPARTURE

RWY01: Climb RWY HDG to 800FT, turn right HDG076° to intercept and proceed via TNT R046 to OMIYA. Cross OMIYA at assigned or specified altitude.

RWY19: Climb RWY HDG to 900FT, turn left HDG001° to intercept and proceed via TNT R046 to OMIYA. Cross OMIYA at assigned or specified altitude.

NOTE

1 When take off RWY01(RWY19), following minimum climb gradient should be maintained until passing 3000FT for noise abatement and obstacle avoidance.

Speed (Knots)	60	90	120	150	180	210
Rate (Feet/Min)	300	450	600	750	900	1050

2 Obstructions exists.

- a 648' MSL height Chimney at 1.5NM NE of RWY01 DER
- b 641' MSL height Chimney at 1.7NM NE of RWY01 DER
- c 647' MSL height Substation at 2.1NM NE of RWY01 DER
- d 669' MSL height Micro Antenna at 1NM ESE of RWY19 DER
- e 696' MSL height Building at 0.9NM SE of RWY19 DER

CHANGE : PROC renamed. HDG AFT DEP FM RWY01,19.

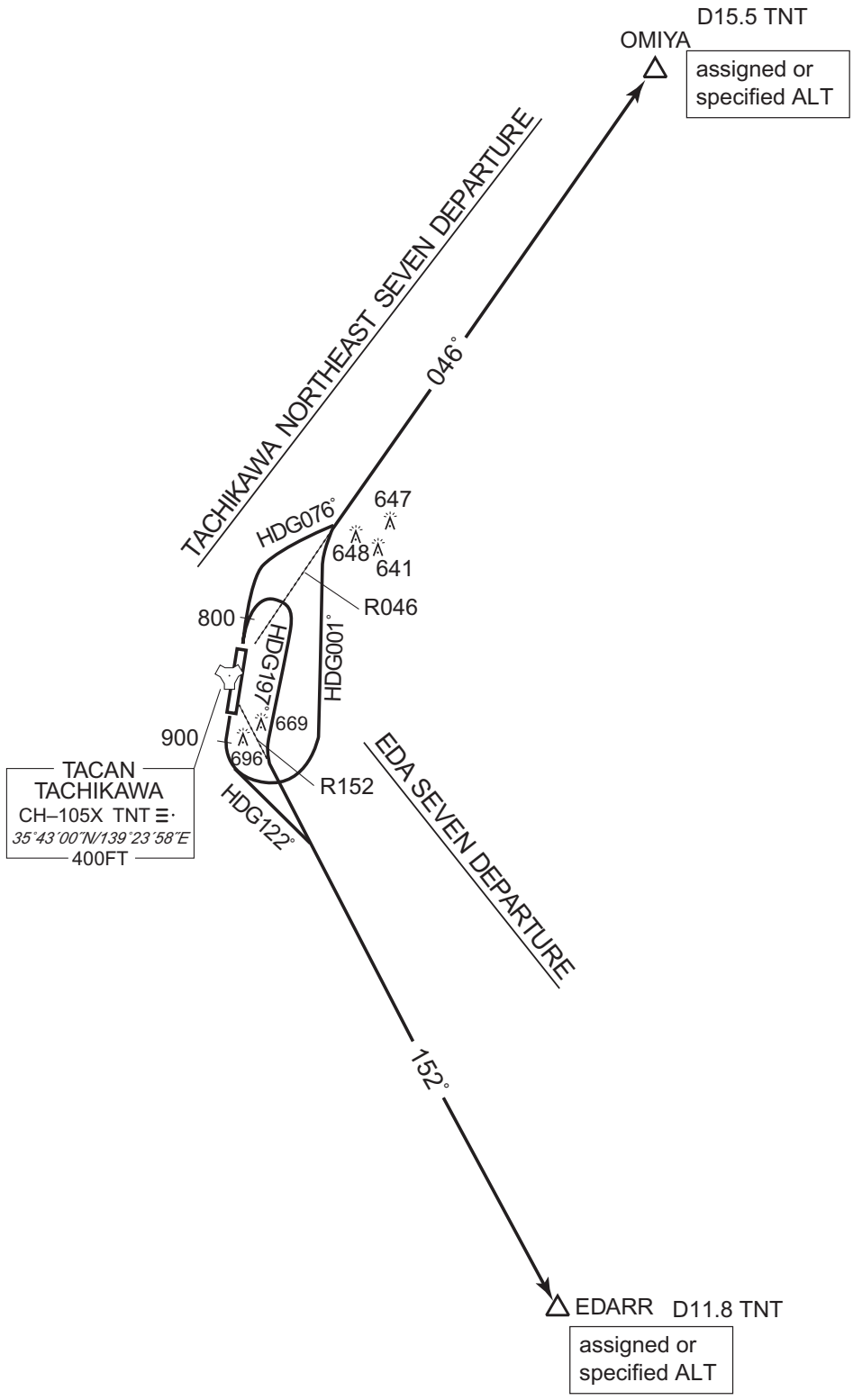
STANDARD DEPARTURE CHART-INSTRUMENT

RJTC / TACHIKAWA

SID

SIDs at TACHIKAWA AERODROME

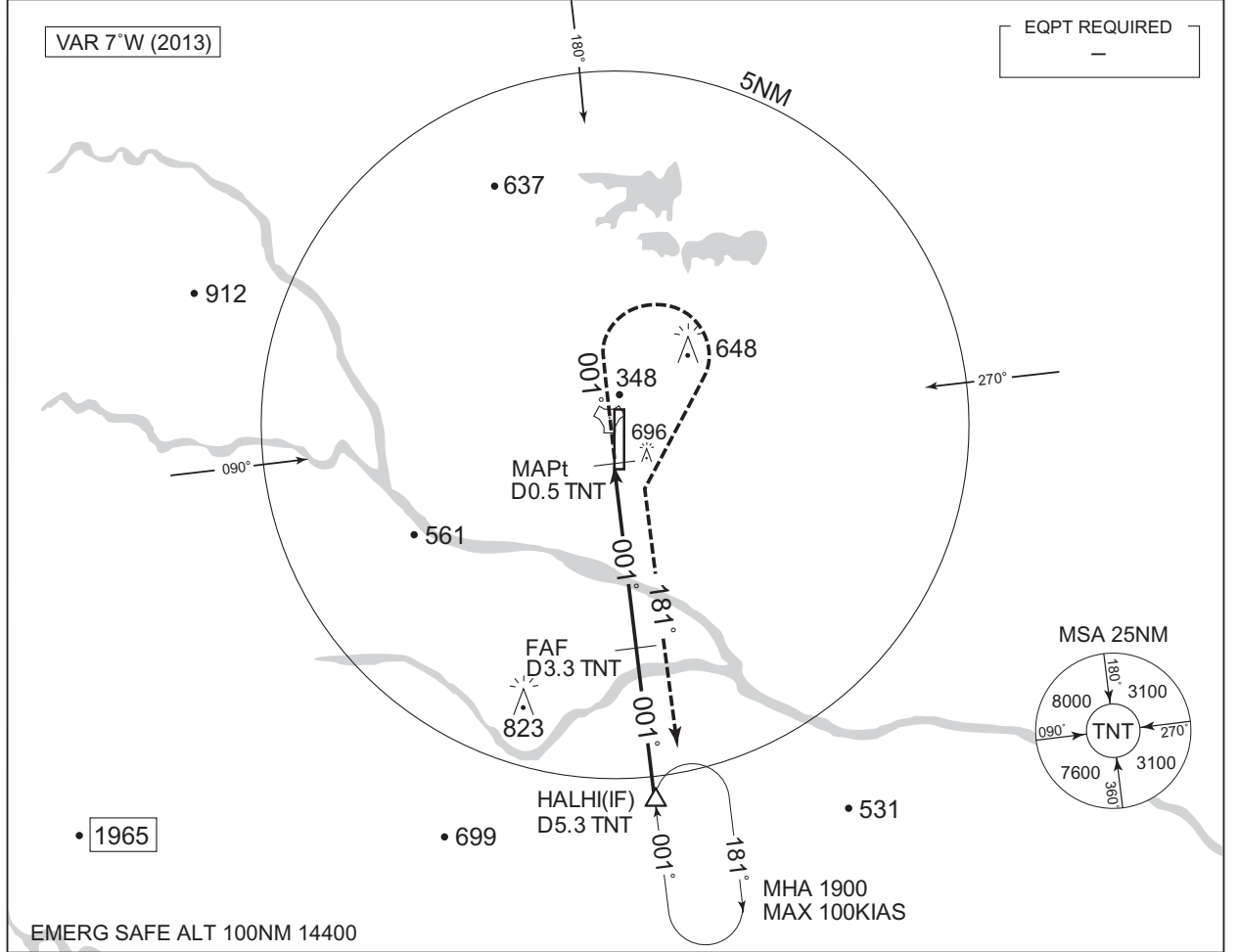
CHANGE : PROC renamed. HDG AFT DEP FM RWY01, 19.



INSTRUMENT APPROACH CHART

RJTC / TACHIKAWA TACAN RWY01

YOKOTA APP 123.8 - 118.3 261.4 - 270.6	TACHIKAWA TACAN 1192 TNT CH-105X 35°43'00"N / 139°23'58"E	TACHIKAWA TOWER 118.85 - 126.2 298.8 - 236.8	RADAR AVAILABLE CALL YOKOTA APP
----------------------------------------------	--------------------------------------------------------------------	----------------------------------------------------	---------------------------------------



DME to TNT	0.5	3.3	5.3
NM to THR	0	3.0	5.0

MINIMA	THR elev.299	AD elev. 313		
CAT	MDA (H)		CIRCLING	
	MDA (H)	VIS	MDA (H)	VIS
H	960 (661)	800	Not Authorized	

CHANGE : Shape of RWY.

INTENTIONALLY LEFT BLANK