

STANDARD DEPARTURE CHART-INSTRUMENT

RJTE / TATEYAMA

SID

TATEYAMA REVERSAL THREE DEPARTURE

RWY 09 : Climb RWY HDG to 500FT, turn left HDG266°...

RWY 27 : Climb RWY HDG to 500FT, turn right...

... to intercept and proceed via TET R311 to 6.4DME, turn left direct to TET TACAN.

Cross TET R311/6.4DME at or below 3000FT, cross TET TACAN at assigned altitude.

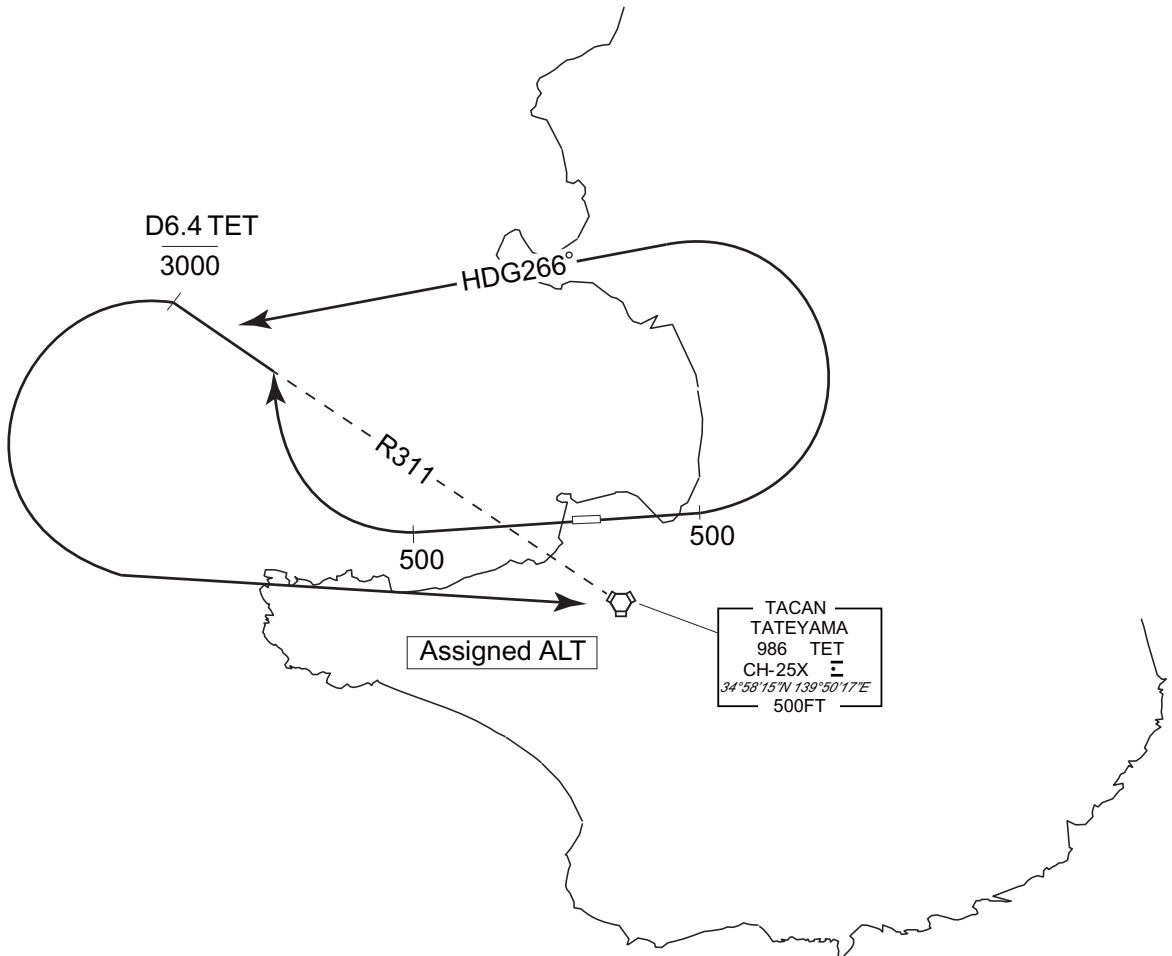
Note RWY09 : 6.0% climb gradient required up to 500FT.

OBST ALT 191FT located at 0.6NM 071° FM end of RWY09.

Note RWY27 : 4.0% climb gradient required up to 800FT.

OBST ALT 525FT located at 3.2NM 261° FM end of RWY27.

CHANGE : PROC renamed. TATEYAMA WEST TWO DEPARTURE abolished. PROC course. Note added.



INTENTIONALLY LEFT BLANK

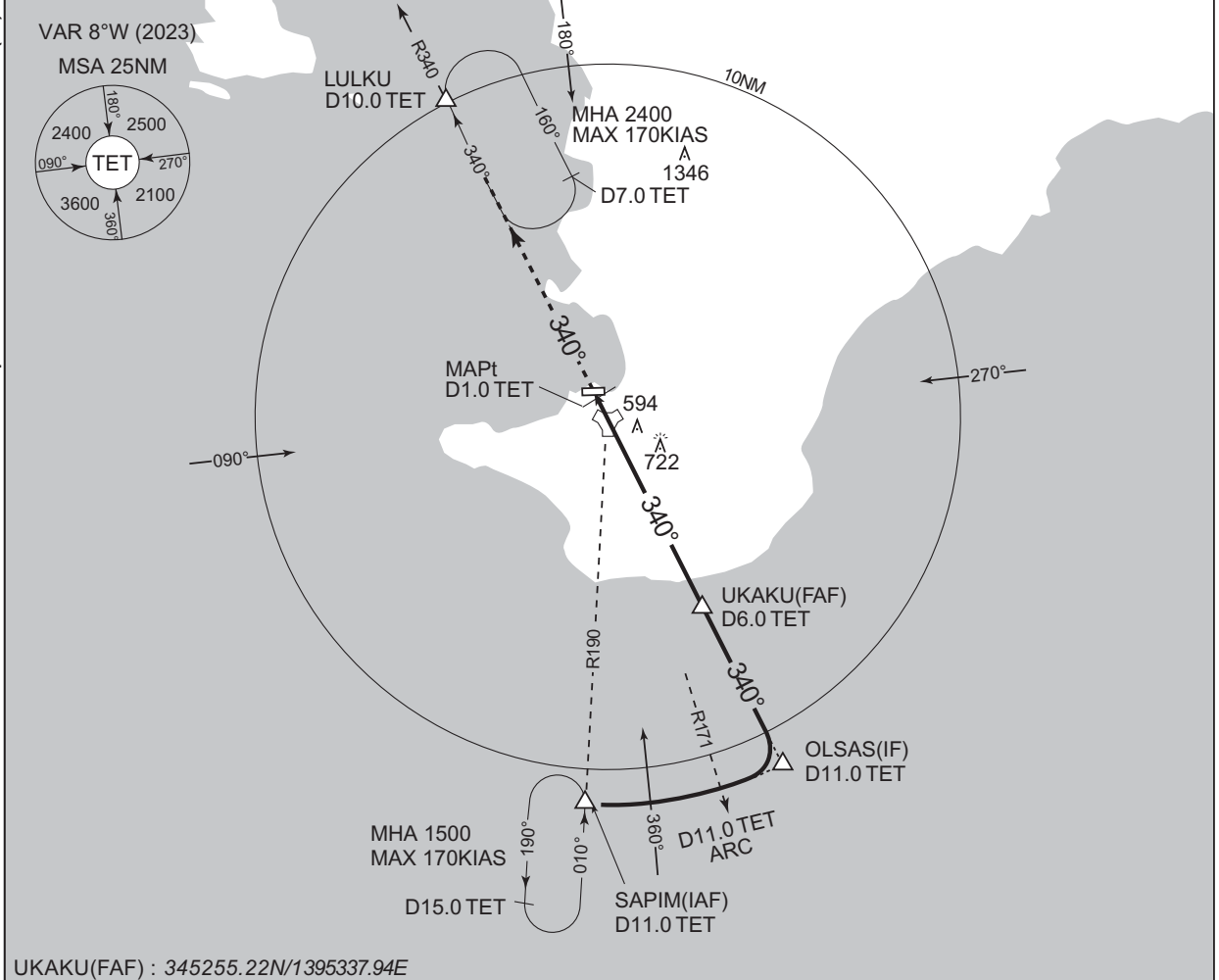
INSTRUMENT APPROACH CHART

RJTE / TATEYAMA

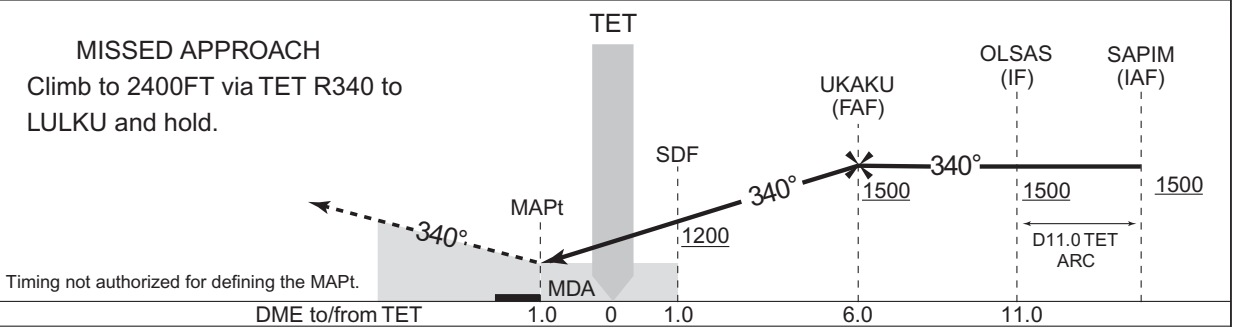
TACAN A

TOKYO DEP 126.0 - 261.2	TATEYAMA TACAN 986 TET CH-25X 34°58'15"N / 139°50'17"E	TATEYAMA TOWER 126.2 - 233.8	GCA AVBL
----------------------------	---	---------------------------------	----------

CHANGE : VAR. MSA . SAPIM, OLSAS, UKAKU, LULKU established. Missed APCH PROC. HLDG pattern. MINIMA for MDA(H).



UKAKU(FAF) : 345255.22N/1395337.94E



MINIMA		AD elev. 10
CAT	CIRCLING	
	MDA(H)	VIS
A	840 (830)	1600
B	-	-
C	-	-
D	-	-

Circling to NORTH side of RWY only.

INTENTIONALLY LEFT BLANK