

**AD 2 AERODROMES**

**RJTE AD 2.1 AERODROME LOCATION INDICATOR AND NAME**

**RJTE - TATEYAMA**

**RJTE AD 2.2 AERODROME GEOGRAPHICAL AND ADMINISTRATIVE DATA**

1	ARP coordinates and site at AD	345915N 1394955E
2	Direction and distance from (city)	1.6nm WSW of Tateyama Railway Station
3	Elevation/ Reference temperature	10ft / -
4	Geoid undulation at AD ELEV PSN	Nil
5	MAG VAR/ Annual change	Nil
6	AD Administration, address, telephone, telefax, telex, AFS, e-mail and/or Web-site addresses	JSDF-M
7	Types of traffic permitted(IFR/ VFR)	IFR/VFR
8	Remarks	Nil

**RJTE AD 2.3 OPERATIONAL HOURS**

1	AD Administration	H24
2	Customs and immigration	Nil
3	Health and sanitation	Nil
4	AIS Briefing Office	H24
5	ATS Reporting Office(ARO)	Nil
6	MET Briefing Office	H24
7	ATS	H24
8	Fuelling	Nil
9	Handling	Nil
10	Security	Nil
11	De-icing	Nil
12	Remarks	Nil

**RJTE AD 2.4 HANDLING SERVICES AND FACILITIES**

1	Cargo-handling facilities	Nil
2	Fuel/ oil types	100/130 JP-5 80/87
3	Fuelling facilities/ capacity	To be issued later
4	De-icing facilities	Nil
5	Hangar space for visiting aircraft	Nil
6	Repair facilities for visiting aircraft	Nil
7	Remarks	Nil

**RJTE AD 2.5 PASSENGER FACILITIES**

1	Hotels	Nil
2	Restaurants	Nil
3	Transportation	Nil
4	Medical facilities	Nil
5	Bank and Post Office	Nil
6	Tourist Office	Nil
7	Remarks	Nil

**RJTE AD 2.6 RESCUE AND FIRE FIGHTING SERVICES**

1	AD category for fire fighting	Nil
2	Rescue equipment	Nil
3	Capability for removal of disabled aircraft	Nil
4	Remarks	Nil

**RJTE AD 2.7 SEASONAL AVAILABILITY-CLEARING**

1	Types of clearing equipment	Nil
2	Clearance priorities	Nil
3	Remarks	Nil

**RJTE AD 2.8 APRONS, TAXIWAYS AND CHECK LOCATIONS DATA**

1	Apron surface and strength	To be issued later
2	Taxiway width, surface and strength	To be issued later
3	ACL and elevation	Not Available
4	VOR checkpoints	Nil
5	INS checkpoints	Nil
6	Remarks	Nil

**RJTE AD 2.9 SURFACE MOVEMENT GUIDANCE AND CONTROL SYSTEM AND MARKINGS**

1	Use of aircraft stand ID signs, TWY guide lines and Visual docking/ parking guidance system of aircraft stands	Nil
2	RWY and TWY markings and LGT	RWY:09/27 (LGT) RTHL,TKOF aiming LGT  TWY: (LGT) TWY edge LGT
3	Stop bars	Nil
4	Remarks	Nil

**RJTE AD 2.10 AERODROME OBSTACLES**

RWY/Area affected	Obstacle type	Coordinates	Elevation	Markings/ LGT	Remarks
Nil					

## RJTE AD 2.11 METEOROLOGICAL INFORMATION PROVIDED

1	Associated MET Office	TATEYAMA
2	Hours of service MET Office outside hours	H24
3	Office responsible for TAF preparation Periods of validity	Nil
4	Trend forecast interval of issuance	Nil
5	Briefing/ consultation provided	P, Ja
6	Flight documentation Language(s) used	Ja, En
7	Charts and other information available for briefing or consultation	S, U, P, N
8	Supplementary equipment available for providing information	Nil
9	ATS units provided with information	Nil
10	Additional information(limitation of service, etc.)	Nil

## RJTE AD 2.12 RUNWAY PHYSICAL CHARACTERISTICS

Designations RWY NR	TRUE BRG	Dimensions of RWY(M)	Strength(PCN)and surface of RWY	THR coordinates THR geoid undulation	THR elevation and highest elevation of TDZ of precision APP RWY
1	2	3	4	5	6
09	To be issued Later	300×45	SW 12500kg (27500lbs) Concrete Asphalt	345912.69N 1394939.04E	THR ELEV: 7.9ft
27	To be issued Later	300×45	SW 12500kg (27500lbs) Concrete Asphalt	345913.52N 1394950.83E	THR ELEV: 7ft
Slope of RWY		Strip Dimensions(M)		Remarks	
7		10		12	
Nil		420×150 420×150		Nil	

## RJTE AD 2.13 DECLARED DISTANCES

RWY Designator	TORA (m)	TODA (m)	ASDA (m)	LDA (m)	Remarks
1	2	3	4	5	6

**RJTE AD 2.14 APPROACH AND RUNWAY LIGHTING**

RWY Designator	APCH LGT type LEN INTST	RTHL Color WBAR	PAPI (VASIS) Angle DIST FM THR MEHT	RTZL LEN	RCLL LEN Spacing Color INTST	REDL LEN Spacing Color INTST	RENL Color WBAR	STWL LEN Color
1	2	3	4	5	6	7	8	9
09								
27								
Remarks								
10								
Nil								

**RJTE AD 2.15 OTHER LIGHTING, SECONDARY POWER SUPPLY**

1	ABN/IBN location, characteristics and hours of operation	ABN: 345902N/1395025E, White/Green, EV10sec, HO
2	LDI location and LGT Anemometer location and LGT	LDI:LGTD
3	TWY edge and center line lighting	TWY edge LGT:AVBL
4	Secondary power supply/ switch-over time	Nil
5	Remarks	WDI LGT,BDRY(HELIPORT)

**RJTE AD 2.16 HELICOPTER LANDING AREA**

To be issued later
--------------------

**RJTE AD 2.17 ATS AIRSPACE**

Designation and lateral limits		Vertical limits (ft)	Airspace classification	ATS unit call sign Language	Remarks
1		2	3	4	6
TATEYAMA CTR	Area within a radius of 5nm of TATEYAMA ARP(34°59'N139°50'E)	2000 or below	D	Tateyama Tower En	

## RJTE AD 2.18 ATS COMMUNICATION FACILITIES

Service designation	Call sign	Frequency	Hours of operation	Remarks
1	2	3	4	5
TWR	Tateyama Tower	126.2MHz 233.8MHz(1) 228.2MHz 123.1MHz(2) 122.0MHz 243.0MHz(E) 121.5MHz(E)	H24	APP provided by Tokyo APP. (1) Primary (2) For Rescue only.
GCA-ASR -PAR	Tateyama GCA	319.0MHz 317.2MHz 306.8MHz 141.25MHz 133.0MHz 139.55MHz 243.0MHz(E) 121.5MHz(E)	2300 - 0800 EXC FRI0801-SUN2259 and HOL.  Other time 1HR PN	PAR RWY 09 ASR RWY 09/27 Glide path 3.0° Maintenance period : 2300-0800 FRI in VMC.  IFF/SIF restricted to spot beyond 36NM S through SW for site.

## RJTE AD 2.19 RADIO NAVIGATION AND LANDING AIDS

Type of aid (VOR declination)	ID	Frequency	Hours of operation	Position of transmitting antenna coordinates	Elevation of DME transmitting antenna	Remarks
1	2	3	4	5	6	7
DME	PQD	1159MHz (CH-72X)	H24	345646.42N 1395343.16E	600ft	
TACAN	TET	986MHz (CH-25X)	H24	345815N 1395017E	504ft	TACAN Unusable: R010-030 beyond 38nm BLW 8000ft. R110-120 beyond 28nm BLW 2000ft. R120-130 beyond 24nm BLW 2000ft. R130-140 beyond 35nm BLW 2000ft.

---

**RJTE AD 2.20 LOCAL TRAFFIC REGULATIONS**

1. Airport regulations

Nil

2. Taxiing to and from stands

Nil

3. Parking area for small aircraft(General aviation)

Nil

4. Parking area for helicopters

Nil

5. Apron - taxiing during winter conditions

Nil

6. Taxiing - limitations

Nil

7. School and training flights - technical test flights - use of runways

Nil

8. Helicopter traffic - limitation

Nil

9. Removal of disabled aircraft from runways

Nil

**RJTE AD 2.21 NOISE ABATEMENT PROCEDURES**

Nil

**RJTE AD 2.22 FLIGHT PROCEDURES**

**1. TAKE OFF MINIMA**

	RWY	ACFT CAT	REDL & RCLL		REDL or RCLL or RCL marking		NIL (DAYTIME ONLY)	
			RVR	VIS	RVR	VIS	RVR	VIS
Multi-Engine ACFT with TKOF ALTN AP FILED	09	A,B	-	-	-	400m	-	500m
	27	A,B	-	-	-	400m	-	500m
OTHER	09	A,B	AVBL LDG MINIMA					
	27	A,B						

**2. WX MINIMA CONCERNING PAR/ASR APCH PROCEDURE**

PAR RWY 09

MINIMA	THR elev. 8	AD elev. 10	CIRCLING	
ACFT CAT	DA(H)	CMV	MDA(H)	VIS
A	257(249)	1000	600(590)	1600
B				
C	-	-	-	-
D	-	-	-	-

Circling to NORTH side of RWY only

ASR RWY 09

MINIMA	THR elev. 8	AD elev. 10	CIRCLING	
ACFT CAT	MDA(H)	CMV	MDA(H)	VIS
A	970(960)	1500	970(960)	1600
B				
C	-	-	-	-
D	-	-	-	-

Circling to NORTH side of RWY only

ASR RWY 27

MINIMA	THR elev. 7	AD elev. 10	CIRCLING	
ACFT CAT	MDA(H)	CMV	MDA(H)	VIS
A	780(770)	1500	780(770)	1600
B				
C	-	-	-	-
D	-	-	-	-

Circling to NORTH side of RWY only

**3. Missed Approach Procedure for PAR/ASR Approach**

Unless otherwise instructed by ATC, execute each missed approach procedure as follows.

- (1) PAR RWY 09: AT guidance limit, climb to 500FT on HDG093°, turn left, to 2400FT via TET R340 to LULKU and hold.
- (2) ASR RWY 09: AT guidance limit, turn left, climb to 2400FT via TET R340 to LULKU and hold.
- (3) ASR RWY 27: AT guidance limit, turn right, climb to 2400FT via TET R340 to LULKU and hold.



■ **4. Lost communication procedures for arrival aircraft under radar navigational guidance**

If radio communications with Tateyama GCA are lost for 1 minute in the pattern, or 5 seconds (PAR)/15 seconds (ASR) on final approach, squawk Mode A/3 Code 7600 and ;

(I) 1. Contact Tateyama Tower.

2. If unable, proceed in accordance with Visual Flight Rules.

3. If unable, proceed to SAPIM at last assigned altitude or 2500 ft whichever is higher and execute TACAN A approach.

(II) Procedures other than above will be issued when situation required.

**RJTE AD 2.23 ADDITIONAL INFORMATION**

OBST : 689ft lighted & marked antenna (DECCA lo station) located 121° / AI 3.5nm FM ARP

**RJTE AD 2.24 CHARTS RELATED TO AN AERODROME**

■ Standard Departure Chart - Instrument (TATEYAMA REVERSAL)  
Instrument Approach Chart (TACAN A)

**INTENTIONALLY LEFT BLANK**

STANDARD DEPARTURE CHART-INSTRUMENT

RJTE / TATEYAMA

SID

TATEYAMA REVERSAL THREE DEPARTURE

RWY 09 : Climb RWY HDG to 500FT, turn left HDG266°...

RWY 27 : Climb RWY HDG to 500FT, turn right...

... to intercept and proceed via TET R311 to 6.4DME, turn left direct to TET TACAN.

Cross TET R311/6.4DME at or below 3000FT, cross TET TACAN at assigned altitude.

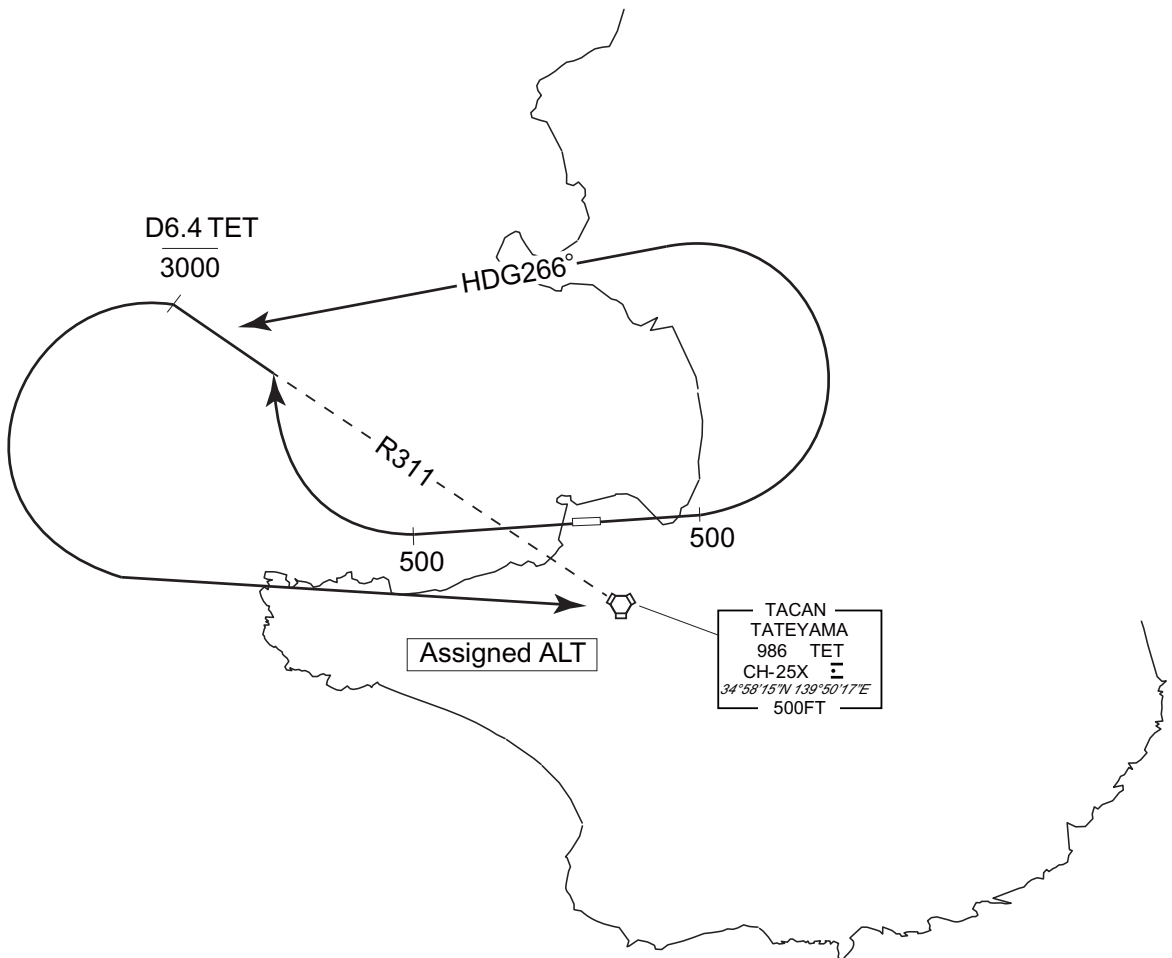
Note RWY09 : 6.0% climb gradient required up to 500FT.

OBST ALT 191FT located at 0.6NM 071° FM end of RWY09.

Note RWY27 : 4.0% climb gradient required up to 800FT.

OBST ALT 525FT located at 3.2NM 261° FM end of RWY27.

CHANGE : PROC renamed. TATEYAMA WEST TWO DEPARTURE abolished. PROC course. Note added.



**INTENTIONALLY LEFT BLANK**

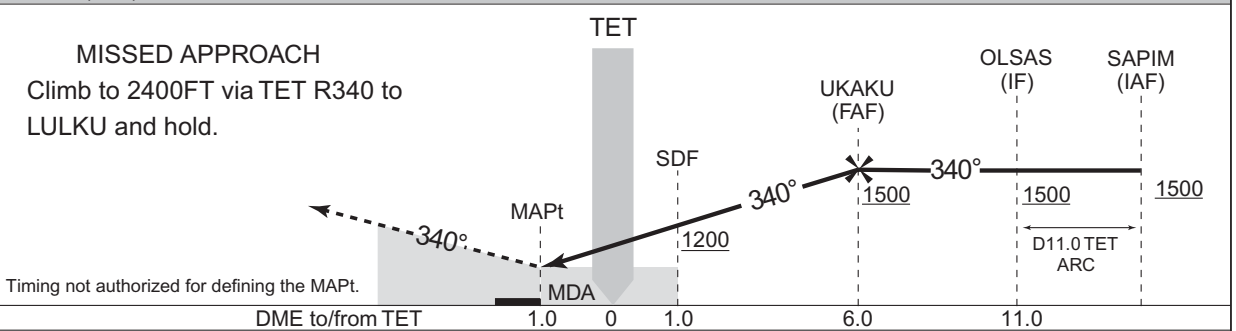
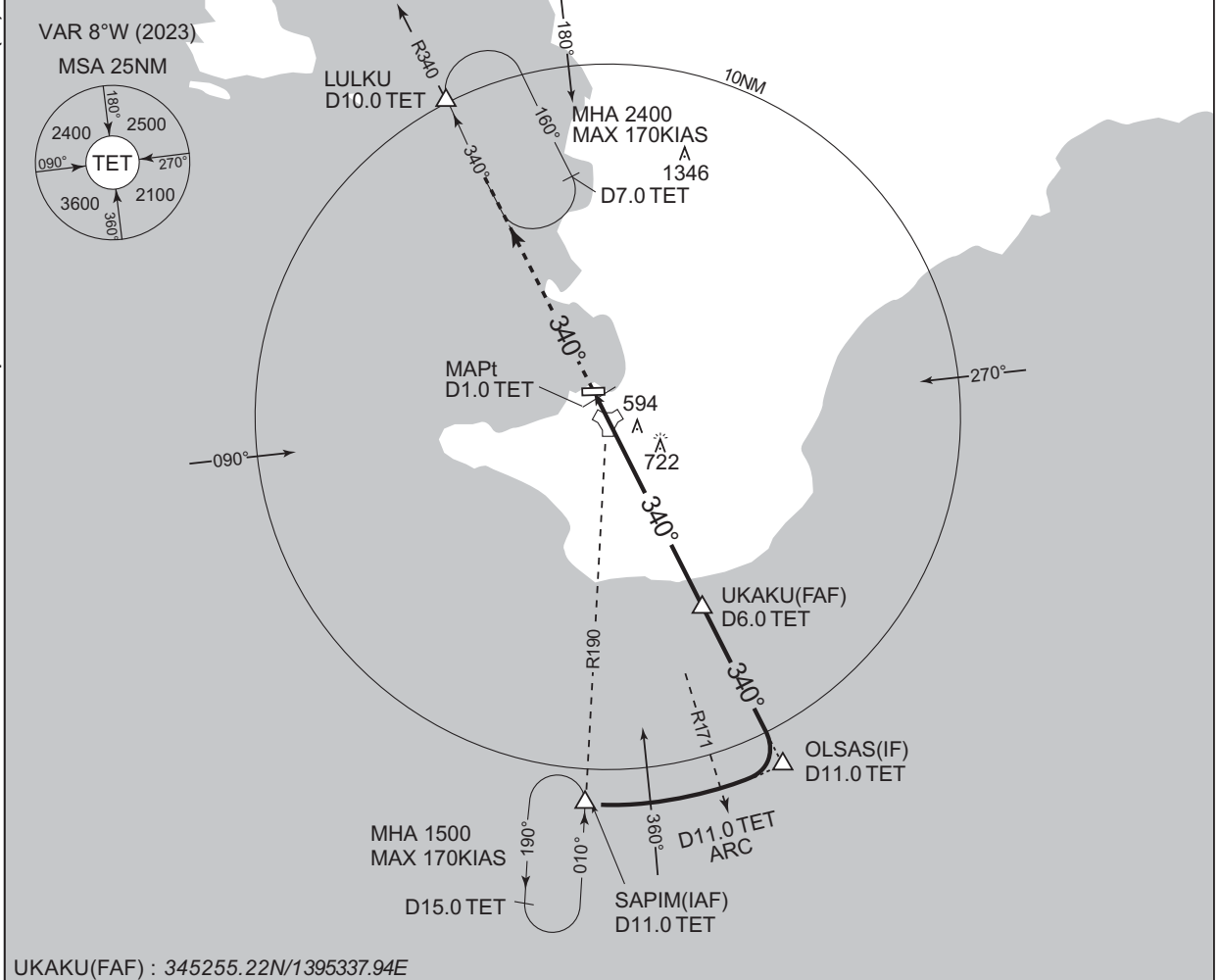
INSTRUMENT APPROACH CHART

RJTE / TATEYAMA

TACAN A

TOKYO DEP 126.0 - 261.2	TATEYAMA TACAN 986 TET CH-25X 34°58'15"N / 139°50'17"E	TATEYAMA TOWER 126.2 - 233.8	GCA AVBL
----------------------------	---	---------------------------------	----------

CHANGE : VAR. MSA . SAPIM, OLSAS, UKAKU, LULKU established. Missed APCH PROC. HLDG pattern. MINIMA for MDA(H).



MINIMA		AD elev. 10	
CAT	CIRCLING		VIS
	MDA(H)		
A	840 (830)		1600
B			
C	-		-
D			

Circling to NORTH side of RWY only.

**INTENTIONALLY LEFT BLANK**