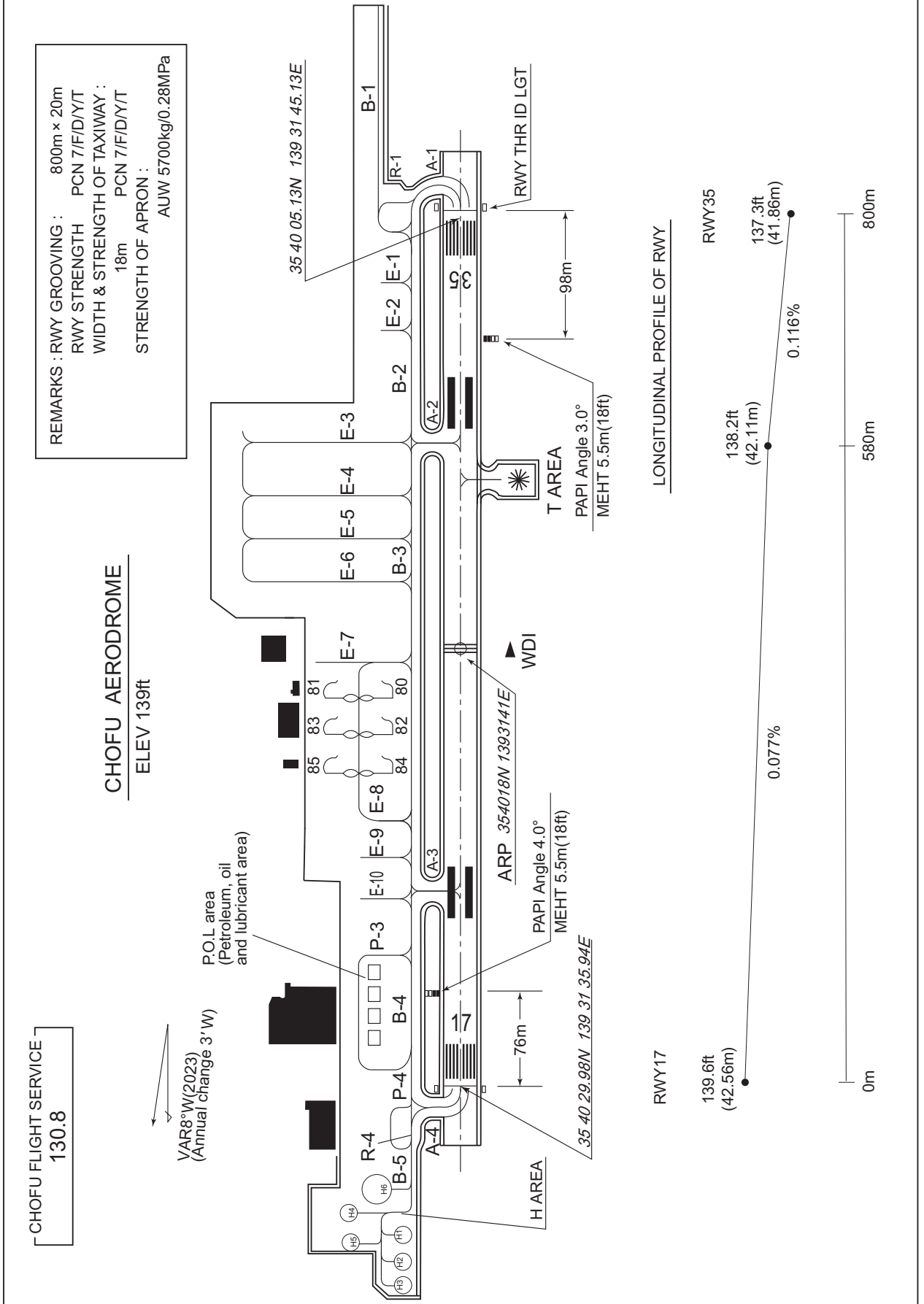


RJTF / CHOFU

AD CHART

CHANGE : VAR.



INTENTIONALLY LEFT BLANK

STANDARD DEPARTURE CHART -INSTRUMENT

RJTF / CHOFU

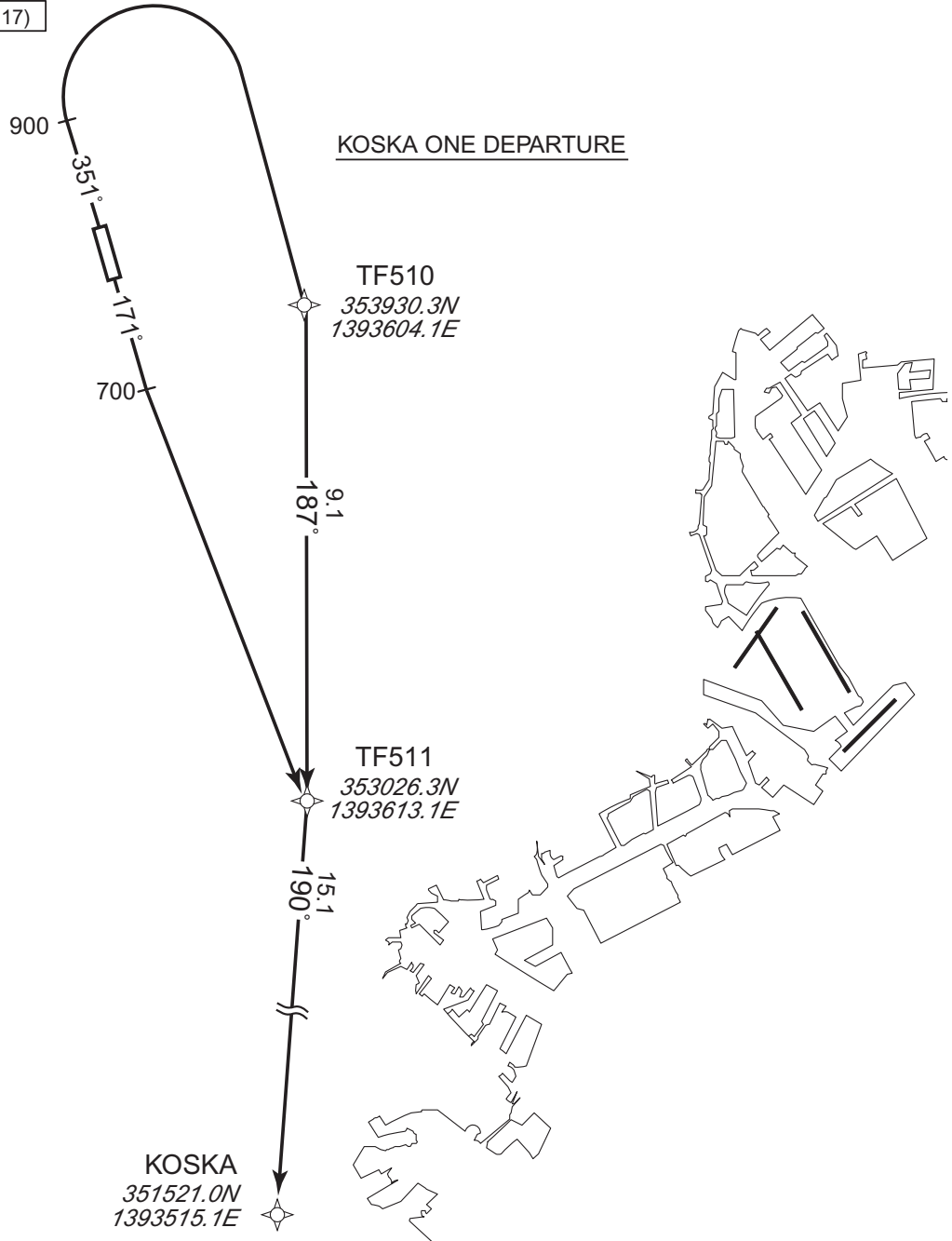
RNAV SID

KOSKA ONE DEPARTURE

RNP1

Note GNSS required.

VAR 7°W (2017)



CHANGE : Navigation Specification(Basic RNP1 → RNP1).

KOSKA ONE DEPARTURE

RWY17 : Climb on HDG171° at or above 700FT, direct to TF511, to KOSKA.

RWY35 : Climb on HDG351° at or above 900FT, turn right direct to TF510, to TF511, to KOSKA.

Note RWY17 : 4.0% climb gradient required up to 700FT.

OBST ALT 181FT located at 0.2NM 162° FM end of RWY17.

RWY35 : 5.0% climb gradient required up to 1100FT.

OBST ALT 543FT located at 1.8NM 334° FM end of RWY35.

OBST ALT 858FT located at 3.6NM 005° FM end of RWY35.

STANDARD DEPARTURE CHART -INSTRUMENT

RJTF / CHOFU

RNAV SID

KOSKA ONE DEPARTURE

RWY17

Serial Number	Path Descriptor	Waypoint Identifier	Fly Over	Course °M(°T)	Magnetic Variation	Distance (NM)	Turn Direction	Altitude (FT)	Speed (KIAS)	Vertical Angle	Navigation Specification
001	VA	-	-	171 (163.3)	-7.5	-	-	+700	-	-	RNP1
002	DF	TF511	-	-	-7.5	-	-	-	-	-	RNP1
003	TF	KOSKA	-	190 (183.0)	-7.5	15.1	-	-	-	-	RNP1

RWY35

Serial Number	Path Descriptor	Waypoint Identifier	Fly Over	Course °M(°T)	Magnetic Variation	Distance (NM)	Turn Direction	Altitude (FT)	Speed (KIAS)	Vertical Angle	Navigation Specification
001	VA	-	-	351 (343.3)	-7.5	-	-	+900	-	-	RNP1
002	DF	TF510	-	-	-7.5	-	R	-	-	-	RNP1
003	TF	TF511	-	187 (179.2)	-7.5	9.1	-	-	-	-	RNP1
004	TF	KOSKA	-	190 (183.0)	-7.5	15.1	-	-	-	-	RNP1

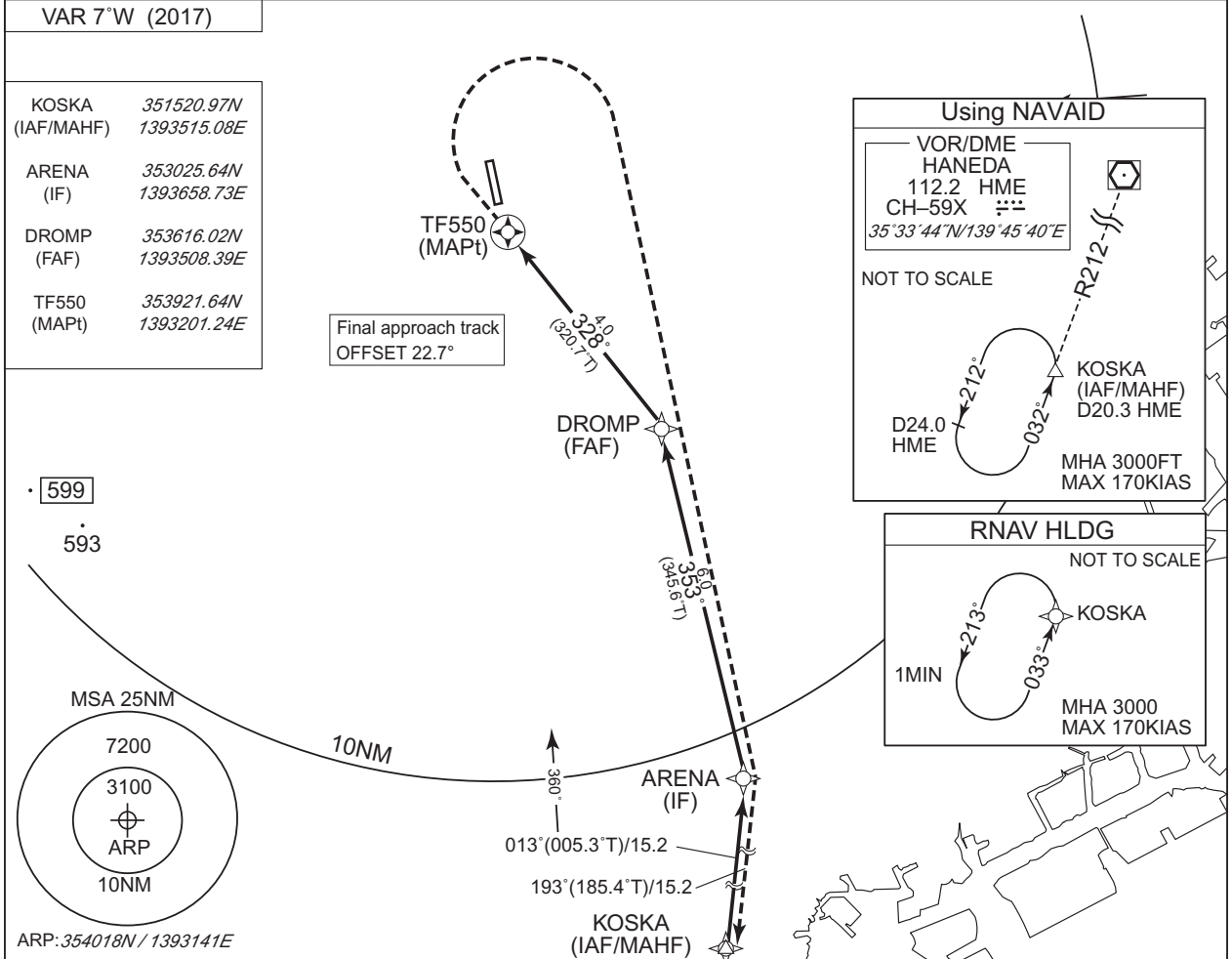
CHANGE : Navigation Specification(Basic RNP1 → RNP1).

INSTRUMENT APPROACH CHART

RJTF / CHOFU

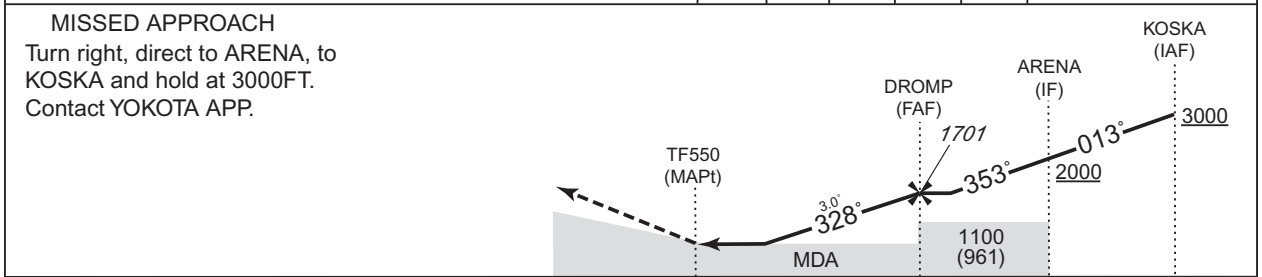
RNP RWY35

YOKOTA APP 118.3 – 270.6	RNP APCH	—	NO RADAR
-----------------------------	----------	---	----------



MAPt	1	2	3	FAF	NM to Next Fix
—	746	1064	1383	1701	ALT (3.0° APCH Path)

CHANGE:PROC renamed. Requirement for RNP.



Missed APCH climb gradient MNM 3.0%

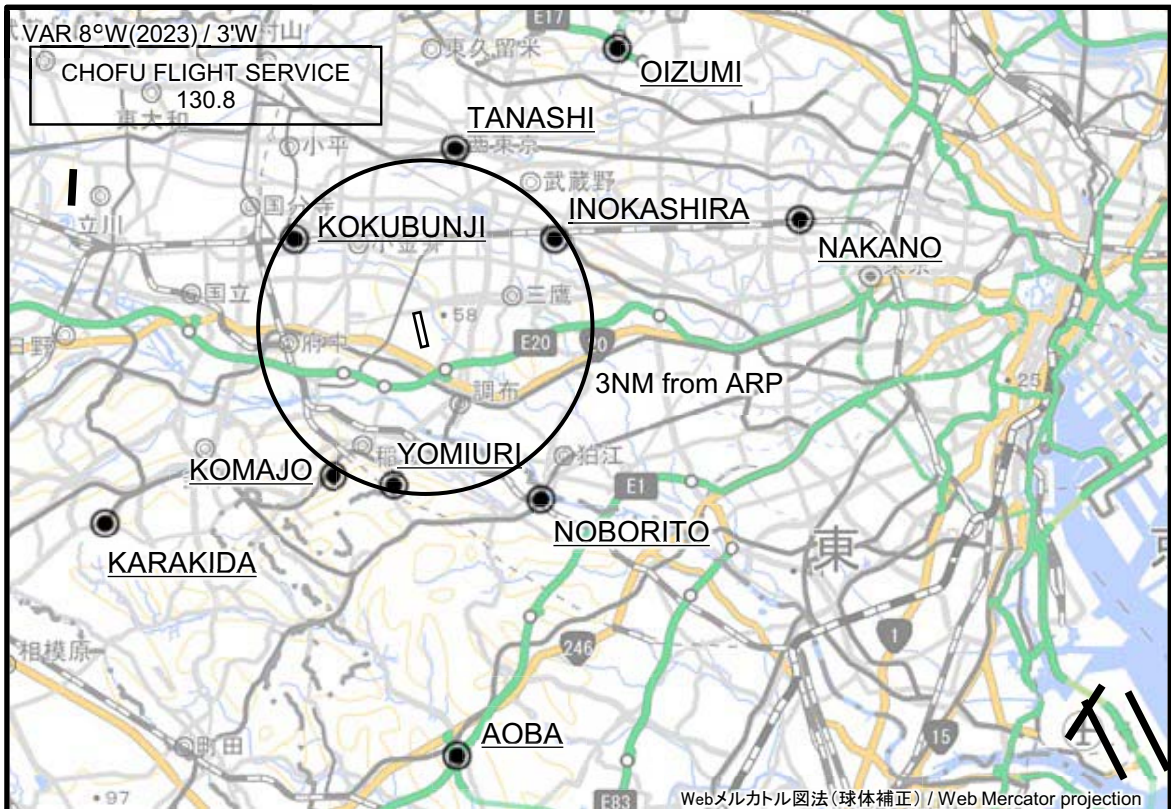
MINIMA		THR elev.137		AD elev.139		
CAT	LNAV/VNAV		LNAV		CIRCLING	
	DA(H)	CMV	MDA(H)	CMV	MDA(H)	VIS
A			670 (531)	1500	690 (551)	1600
B					720 (581)	
C						
D						

MINIMA with Missed APCH climb gradient of 2.5% are not established.
 Circling to EAST side of RWY only.

INTENTIONALLY LEFT BLANK

RJTF / CHOFU

Visual REP



※図中に標高を示す数字がある場合、単位はメートル(m)である。The unit of measurement used to express elevation is meter(m).

Call sign	BRG / DIST from ARP	Remarks
大泉 Oizumi	034°T / 6.2NM	外環自動車道大泉インターチェンジ Interchange
田無 Tanashi	009°T / 3.4NM	西武新宿線田無駅 Station
中野 Nakano	073°T / 7.0NM	中央線中野駅 Station
国分寺 Kokubunji	306°T / 2.9NM	中央線国分寺駅 Station
井の頭 Inokashira	054°T / 2.9NM	井の頭公園池 Pond
よみうり Yomiuri	189°T / 2.9NM	よみうりランド観覧車 Ferris wheel
駒女 Komajo	213°T / 3.1NM	駒沢女子大学 University
登戸 Noborito	146°T / 3.7NM	南武線登戸駅 Station
唐木田 Karakida	239°T / 6.8NM	小田急電鉄多摩線唐木田操車場 Rail yard
青葉 Aoba	176°T / 7.7NM	東名高速道路青葉インターチェンジ Interchange

CHANGE : VAR: Visual REP established(Komajo).

注 意 : 調布飛行場に進入しようとする航空機は、5NM以遠の目視位置通報点において位置通報を行い、調布飛行場の対空通信局から運航に必要な情報の提供を受けること。
対空通信局の呼出符号及び周波数 : 調布フライト・サービス、130.8MHz

ATTENTION : The aircraft approaching to Chofu Aerodrome shall report PPSN to A/G communication station of Chofu Aerodrome at Visual REP 5NM or more from the aerodrome and receive necessary information for flight.
Call sign and frequency of A/G : Chofu Flight Service, 130.8MHz

INTENTIONALLY LEFT BLANK