



**INTENTIONALLY LEFT BLANK**

STANDARD DEPARTURE CHART-INSTRUMENT

RJTH / HACHIOJIMA

SID

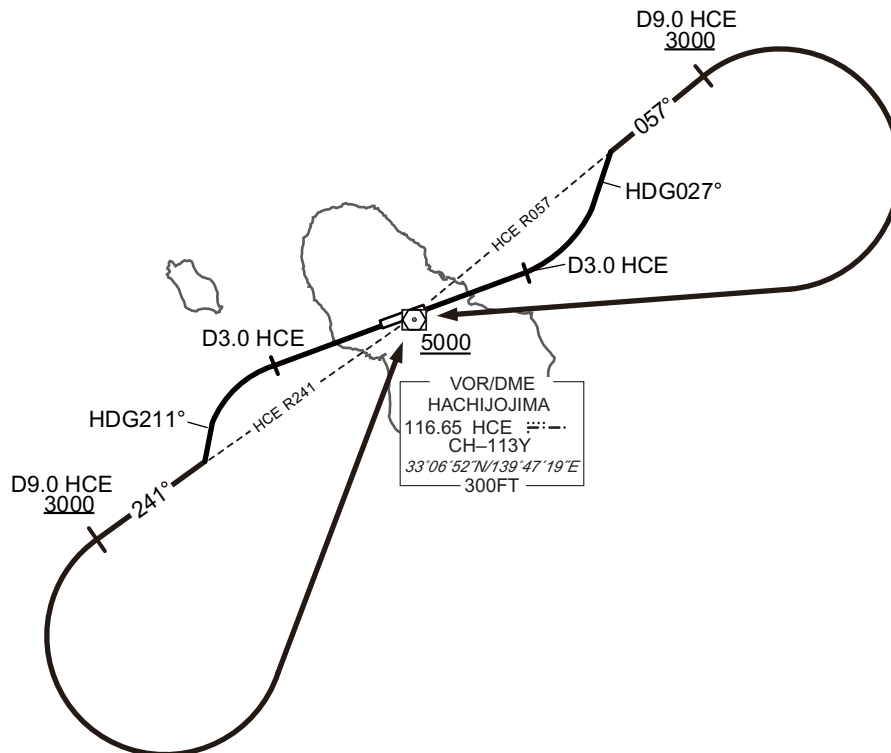
HACHIOJO REVERSAL SIX DEPARTURE

RWY08 : Climb RWY HDG to HCE 3.0DME, turn left HDG 027° to intercept and proceed via HCE R057 to 9.0DME, turn right, direct to HCE VOR/DME.

Cross HCE R057/9.0DME at or above 3000FT,  
cross HCE VOR/DME at or above 5000FT.

RWY26 : Climb RWY HDG to HCE 3.0DME, turn left HDG 211° to intercept and proceed via HCE R241 to 9.0DME, turn left, direct to HCE VOR/DME.

Cross HCE R241/9.0DME at or above 3000FT,  
cross HCE VOR/DME at or above 5000FT.



CHANGE : PROC renamed. PROC course.

STANDARD DEPARTURE CHART-INSTRUMENT

RJTH / HACHIJOJIMA

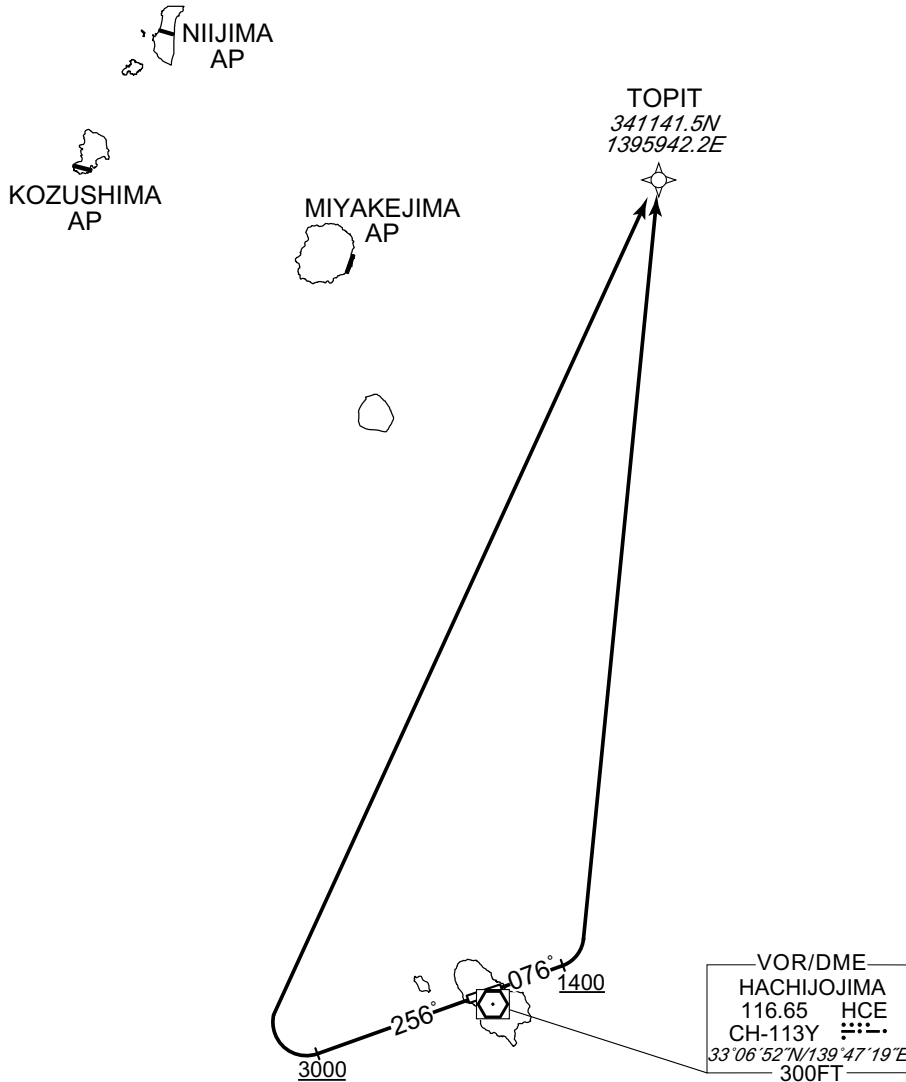
RNAV SID

TOPIT ONE DEPARTURE

RNP1

Note GNSS required.

VAR 7° W



RWY08 : Climb on HDG 076° at or above 1400FT, turn left direct to TOPIT.  
 RWY26 : Climb on HDG 256° at or above 3000FT, turn right direct to TOPIT.

RWY08

| Serial Number | Path Descriptor | Waypoint Identifier | Fly Over | Course °M(°T)  | Magnetic Variation | Distance (NM) | Turn Direction | Altitude (FT) | Speed (KIAS) | Vertical Angle | Navigation Specification |
|---------------|-----------------|---------------------|----------|----------------|--------------------|---------------|----------------|---------------|--------------|----------------|--------------------------|
| 001           | VA              | -                   | -        | 076<br>(069.5) | -6.7               | -             | -              | +1400         | -            | -              | RNP1                     |
| 002           | DF              | TOPIT               | -        | -              | -6.7               | -             | L              | -             | -            | -              | RNP1                     |

RWY26

| Serial Number | Path Descriptor | Waypoint Identifier | Fly Over | Course °M(°T)  | Magnetic Variation | Distance (NM) | Turn Direction | Altitude (FT) | Speed (KIAS) | Vertical Angle | Navigation Specification |
|---------------|-----------------|---------------------|----------|----------------|--------------------|---------------|----------------|---------------|--------------|----------------|--------------------------|
| 001           | VA              | -                   | -        | 256<br>(249.5) | -6.7               | -             | -              | +3000         | -            | -              | RNP1                     |
| 002           | DF              | TOPIT               | -        | -              | -6.7               | -             | R              | -             | -            | -              | RNP1                     |

CHANGE : Navigation Specification(Basic RNP1 → RNP1).

STANDARD ARRIVAL CHART-INSTRUMENT

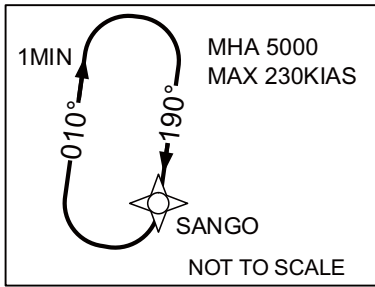
RJTH/HACHIOJIMA RNAV STAR RWY26

SANGO ARRIVAL

RNP1

Note GNSS required.

VAR7°W



SANGO  
332250.4N  
1394814.0E  
5000



9.5  
134°

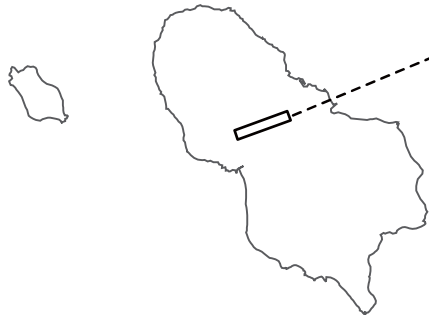


TH671  
331705.1N  
1395719.0E

6.0  
164°



SHELL  
331133.7N  
1400008.6E  
2000



CHANGE : Navigation Specification(Basic RNP1 → RNP1).

From SANGO at or above 5000FT, to TH671, to SHELL at or above 2000FT.

| Serial Number | Path Descriptor | Waypoint Identifier | Fly Over | Course °M(°T)  | Magnetic Variation | Distance (NM) | Turn Direction | Altitude (FT) | Speed (KIAS) | Vertical Angle | Navigation Specification |
|---------------|-----------------|---------------------|----------|----------------|--------------------|---------------|----------------|---------------|--------------|----------------|--------------------------|
| 001           | IF              | SANGO               | -        | -              | -6.9               | -             | -              | +5000         | -            | -              | RNP1                     |
| 002           | TF              | TH671               | -        | 134<br>(127.1) | -6.9               | 9.5           | -              | -             | -            | -              | RNP1                     |
| 003           | TF              | SHELL               | -        | 164<br>(156.8) | -6.9               | 6.0           | -              | +2000         | -            | -              | RNP1                     |

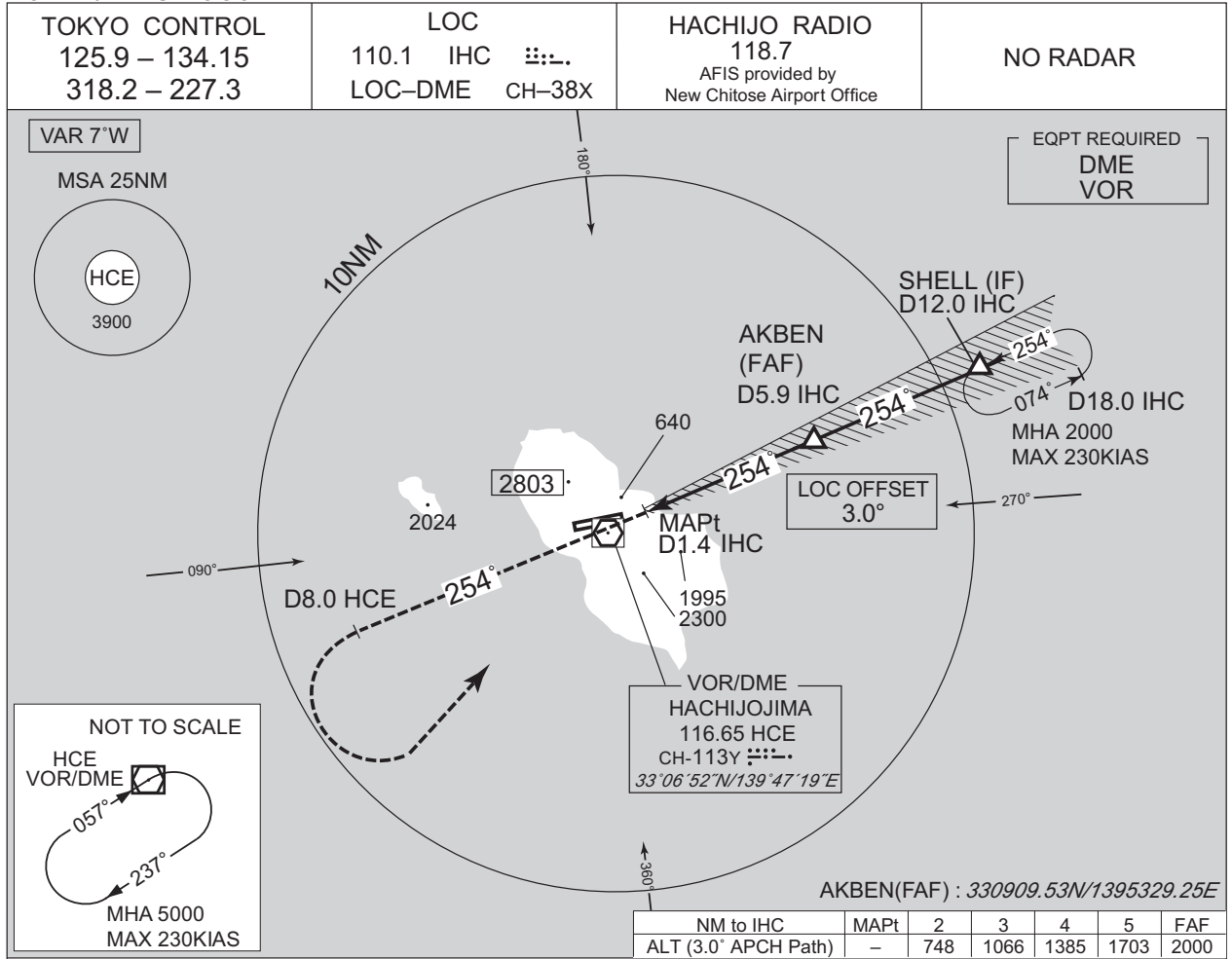
| Path | Waypoint Identifier | Inbound Course °M(°T) | Magnetic Variation | Outbound Time (MIN) | Turn Direction | Minimum Altitude (FT) | Maximum Altitude (FT) | Speed (KIAS) | Navigation Specification |
|------|---------------------|-----------------------|--------------------|---------------------|----------------|-----------------------|-----------------------|--------------|--------------------------|
| Hold | SANGO               | 190<br>(182.8)        | -6.9               | 1.0(-14000)         | R              | 5000                  | FL140                 | -230(-14000) | RNP1                     |

**INTENTIONALLY LEFT BLANK**

INSTRUMENT APPROACH CHART

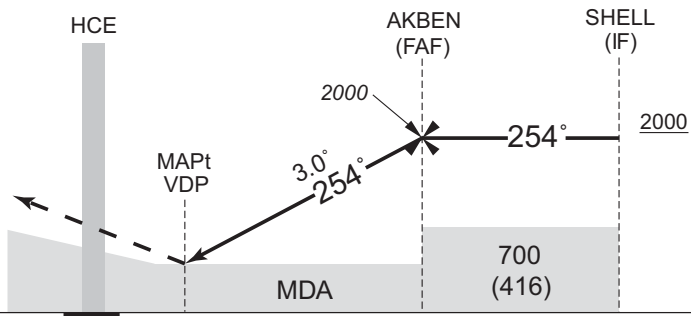
RJTH / HACHIOJIMA

LOC Z RWY26



CHANGE : PROC course. HLDG course for SHELL. ALT(3.0°APCH path).

**MISSED APPROACH**  
 Climb via HCE R254 to HCE 8.0DME,  
 turn left, direct to HCE VOR/DME and  
 hold at 5000FT.  
 Contact HACHIOJO RADIO.



|            |     |     |     |      |
|------------|-----|-----|-----|------|
| DME to IHC | 0.7 | 1.4 | 5.9 | 12.0 |
| NM to THR  | 0   | 0.7 | 5.2 | 11.3 |

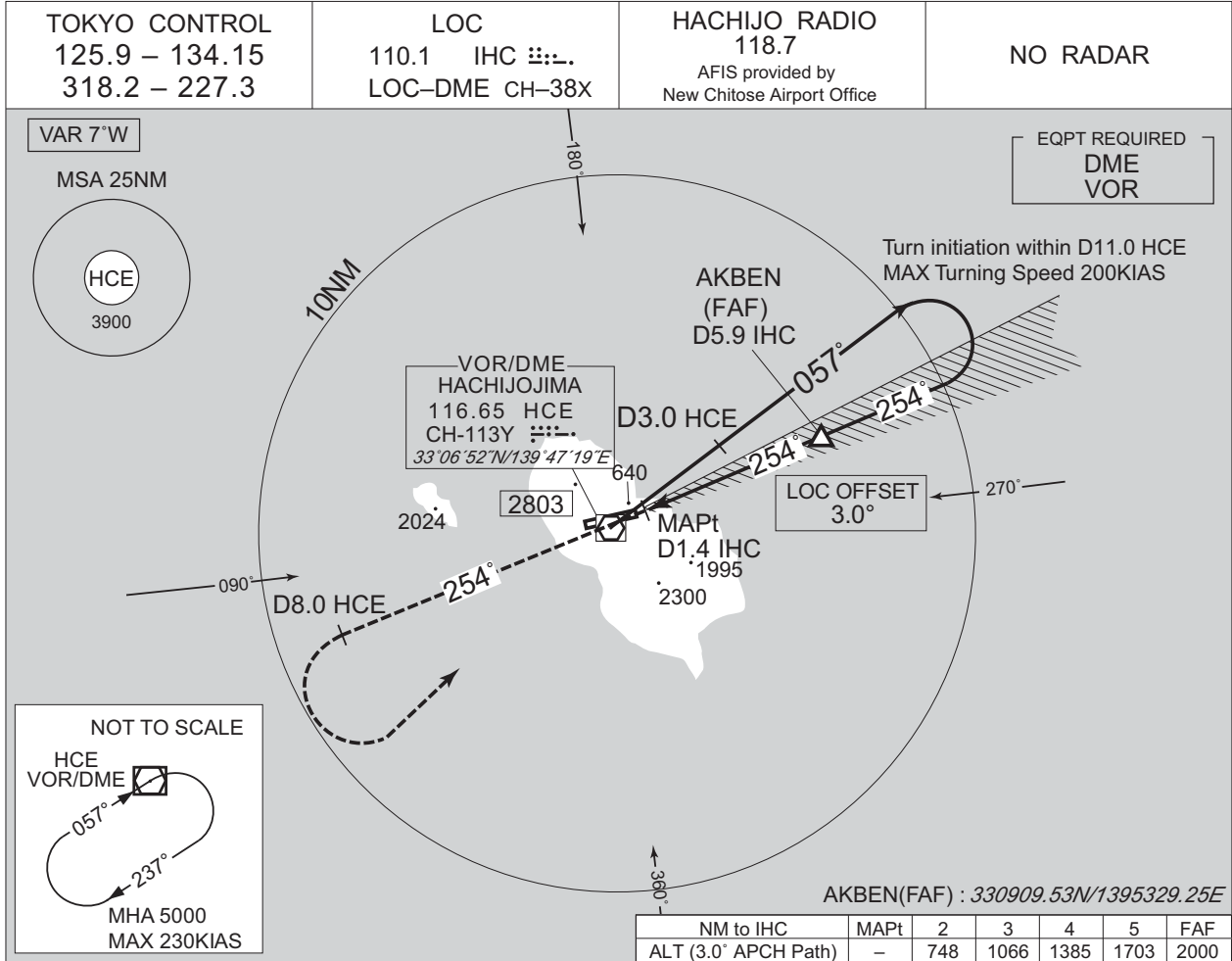
|               |               |              |        |     |
|---------------|---------------|--------------|--------|-----|
| <b>MINIMA</b> | THR elev. 284 | AD elev. 301 |        |     |
| CAT           | CIRCLING      |              |        |     |
|               | MDA(H)        | CMV          | MDA(H) | VIS |
| A             | 550 (266)     | 1000         | -      | -   |
| B             |               | 1100         |        |     |
| C             |               | 1200         |        |     |
| D             |               | 1400         |        |     |

Circling NOT authorized.

INSTRUMENT APPROACH CHART

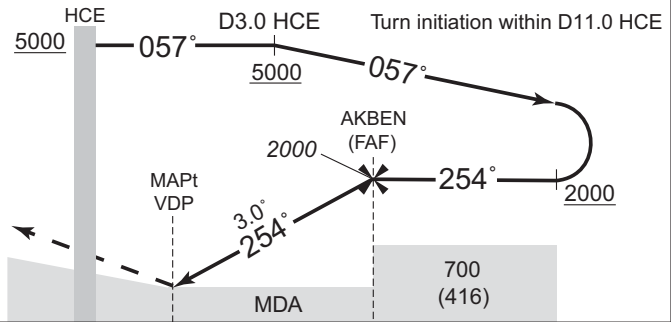
RJTH / HACHIJOJIMA

LOC Y RWY26



CHANGE : PROC course. ALT(3.0°APCH path).

**MISSED APPROACH**  
Climb via HCE R254 to HCE 8.0DME,  
turn left, direct to HCE VOR/DME and  
hold at 5000FT.  
Contact HACHIJO RADIO.



Timing not authorized for defining the MAPt.

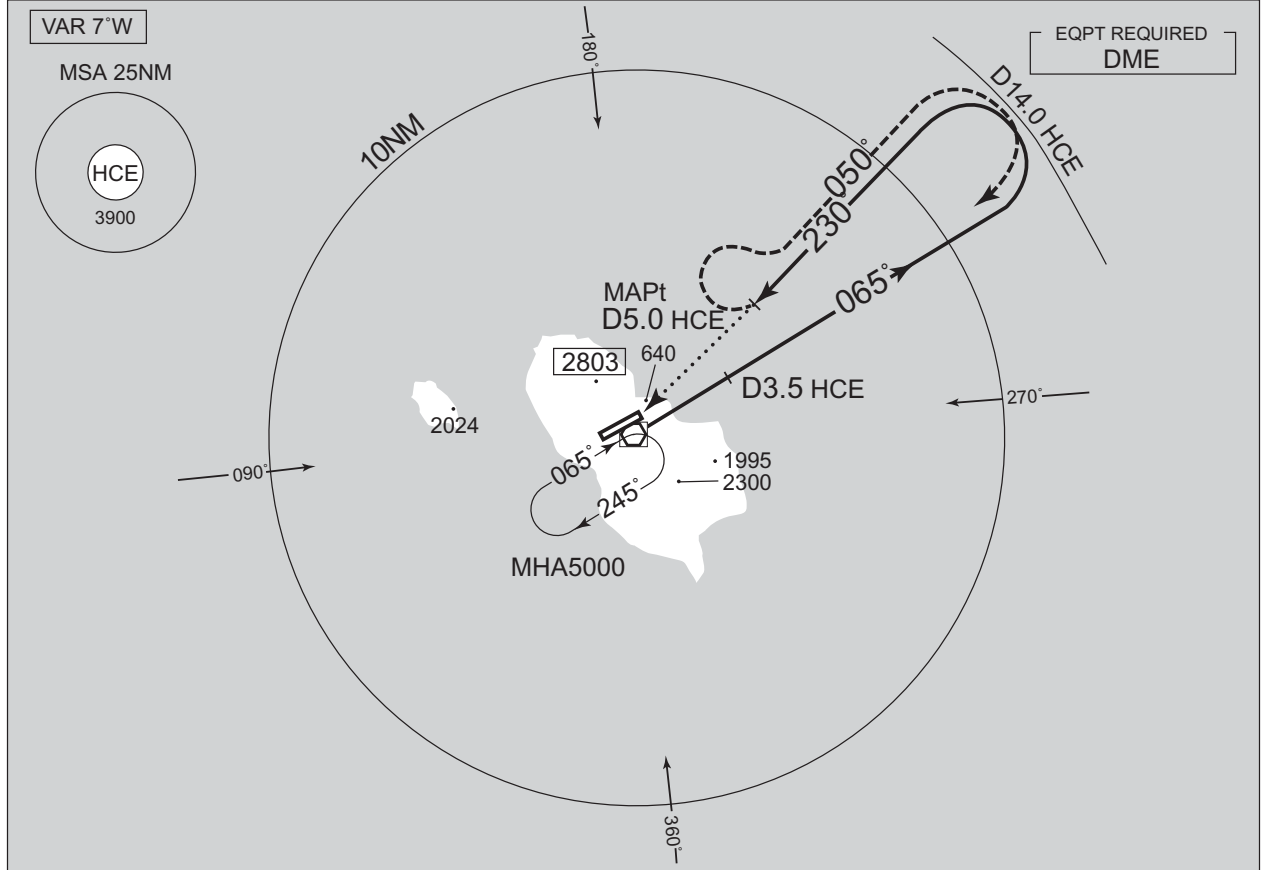


INSTRUMENT APPROACH CHART

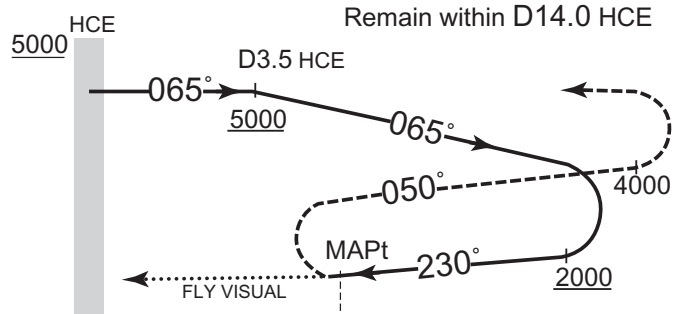
RJTH / HACHIOJIMA

VOR A (For RWY 26)

|  |   |   |          |
|--|---|---|----------|
| TOKYO CONTROL<br>125.9 – 134.15<br>318.2 – 227.3 | HACHIOJIMA VOR/DME<br>116.65 HCE<br>CH-113Y<br>33°06'52"N/139°47'19"E | HACHIOJO RADIO<br>118.7<br>AFIS provided by<br>New Chitose Airport Office | NO RADAR |
|--|---|---|----------|



**MISSED APPROACH**  
Turn right, climb to 4000FT via HCE R050, turn right, proceed to HCE VOR/DME and hold at 5000FT. Contact HACHIOJO RADIO.



DME to HCE 5.0  
NM to THR 4.7

MINIMA THR elev. 284 AD elev. 301

| CAT | MDA(H)    | Facilities  |              |              |     |
|-----|-----------|-------------|--------------|--------------|-----|
|     |           | Full<br>VIS | Intermediate | Basic<br>VIS | Nil |
| A   | 800 (516) | -           |              | 4800         |     |
| B   |           |             |              |              |     |
| C   |           |             |              |              |     |
| D   |           |             |              |              |     |

MINIMA APPLICATION CRITERIA in AD1.1.6.10.1.4 are not applicable.

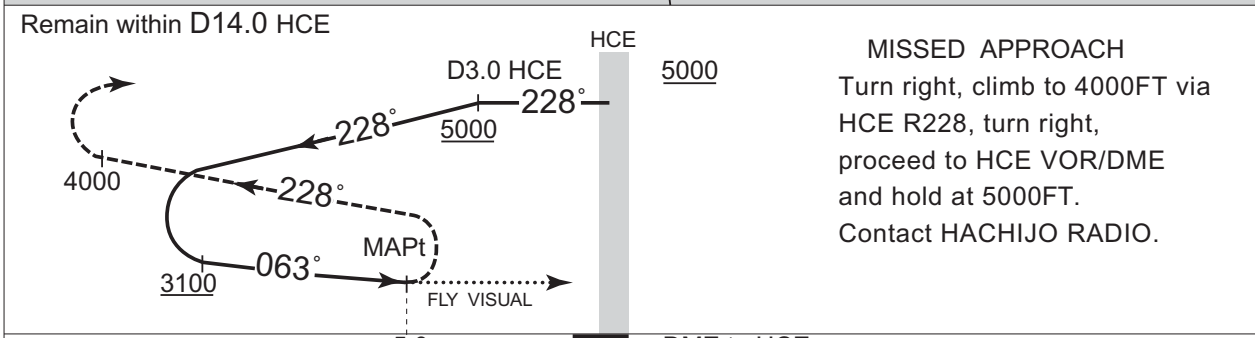
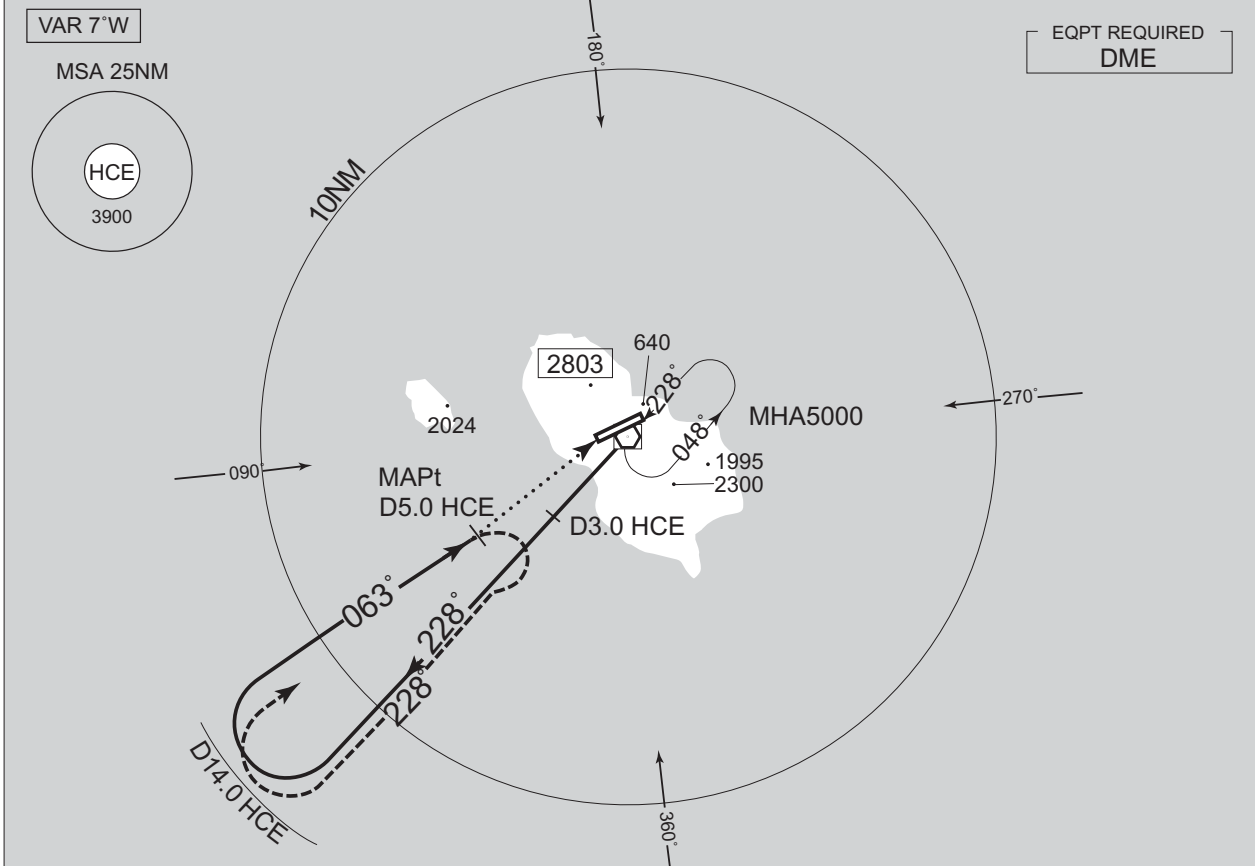
CHANGE: PROC renamed.

INSTRUMENT APPROACH CHART

RJTH / HACHIJOJIMA

VOR B (For RWY 08)

|  |  |  |          |
|--|--|--|----------|
| TOKYO CONTROL<br>125.9 – 134.15<br>318.2 – 227.3 | HACHIJOJIMA VOR/DME<br>116.65 HCE<br>CH-113Y<br>33°06'52"N/139°47'19"E | HACHIJO RADIO<br>118.7<br>AFIS provided by<br>New Chitose Airport Office | NO RADAR |
|--|--|--|----------|



5.0 DME to HCE  
4.3 NM to THR

|        |           |               |              |              |      |
|--------|-----------|---------------|--------------|--------------|------|
| MINIMA |           | THR elev. 282 |              | AD elev. 301 |      |
| CAT    | MDA(H)    | Facilities    |              |              | Nil  |
|        |           | Full          | Intermediate | Basic        |      |
|        |           | VIS           |              |              | VIS  |
| A      | 800 (518) |               |              |              | 4800 |
| B      |           | -             |              |              |      |
| C      |           |               |              |              |      |
| D      |           |               |              |              |      |

MINIMA APPLICATION CRITERIA in AD1.1.6.10.1.4 are not applicable.

CHANGE: PROC renamed.

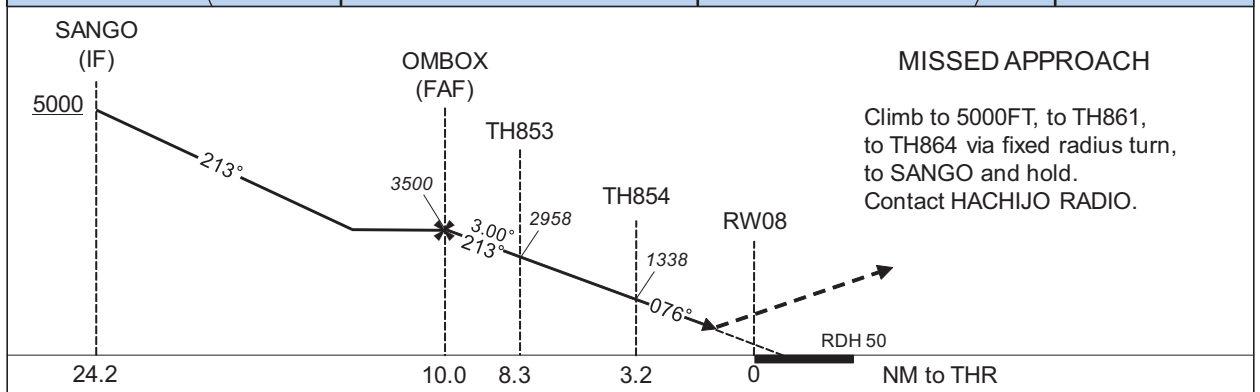
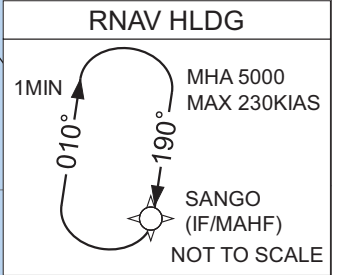
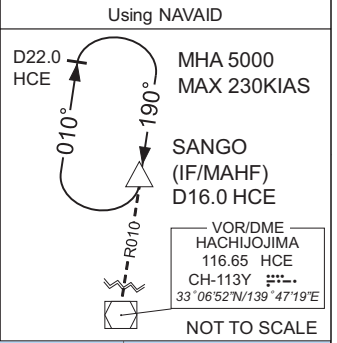
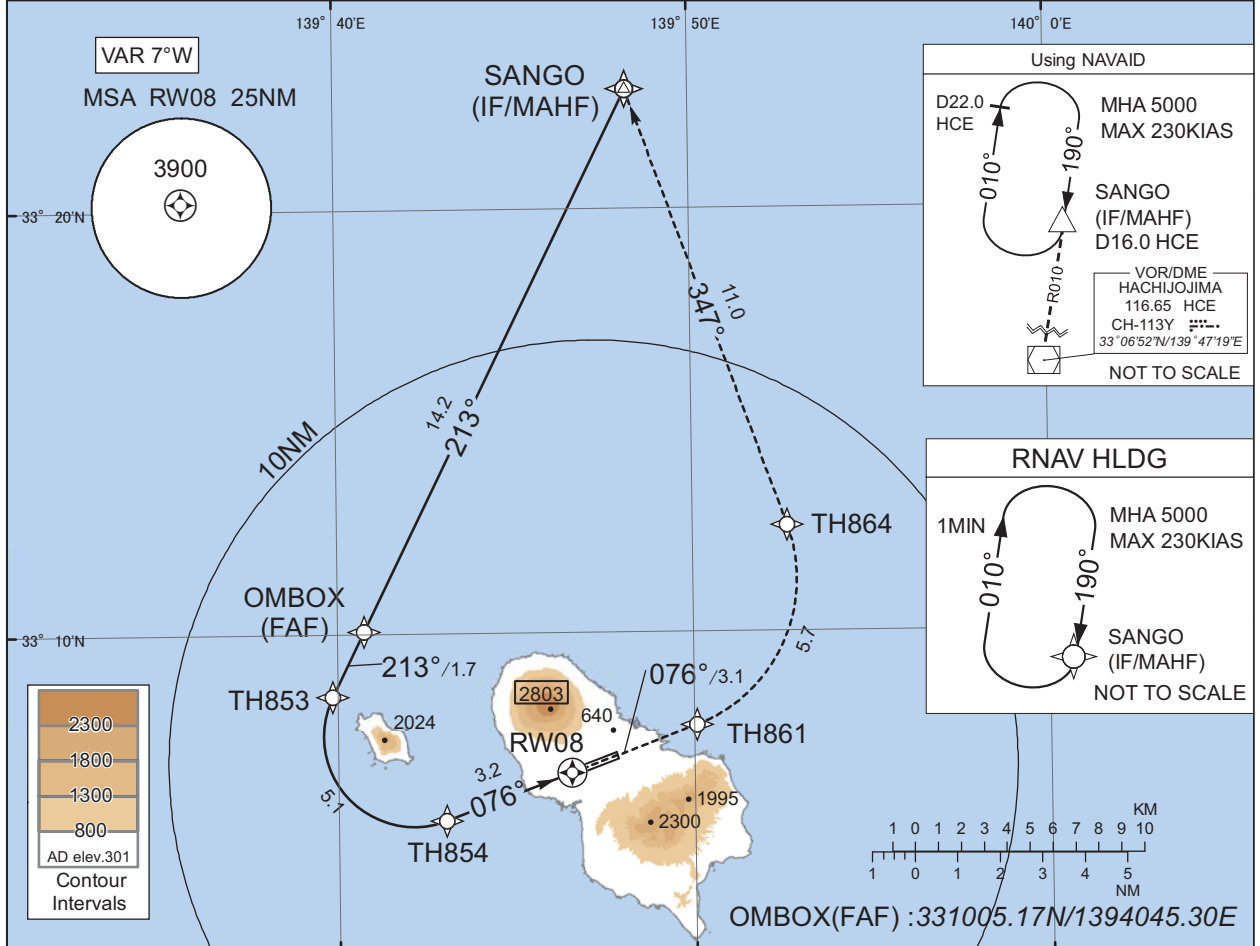
INSTRUMENT APPROACH CHART

RJTH / HACHIOJIMA

RNP Z RWY08(AR)

|  |                        |   |          |
|--|------------------------|---|----------|
| TOKYO CONTROL<br>125.9 - 134.15<br>318.2 - 227.3 | RNP AR<br>RF required. | HACHIOJO RADIO<br>118.7<br>AFIS provided by<br>New Chitose Airport Office | NO RADAR |
|--|------------------------|---|----------|

For uncompensated Baro-VNAV systems, procedure not authorized below 0°C / above 45°C



MISSED APPROACH

Climb to 5000FT, to TH861, to TH864 via fixed radius turn, to SANGO and hold. Contact HACHIOJO RADIO.

CHANGE : New PROC.

|                                     |               |              |          |      |
|-------------------------------------|---------------|--------------|----------|------|
| Missed APCH climb gradient MNM 5.0% |               |              |          |      |
| MINIMA                              | THR elev. 282 | AD elev. 301 |          |      |
| CAT                                 | RNP 0.10      |              | RNP 0.30 |      |
|                                     | DA(H)         | CMV          | DA(H)    | CMV  |
| A                                   | -             | -            | -        | -    |
| B                                   | -             | -            | -        | -    |
| C                                   | 608(326)      | 1800         | 823(541) | 2000 |
| D                                   | -             | -            | -        | -    |

MINIMA with Missed APCH climb gradient of 2.5% are not established.

**Authorization Required**

INSTRUMENT APPROACH CHART

RJTH / HACHIJOJIMA

RNP Z RWY08(AR)

Coding Table

| Serial Number | Path Descriptor                    | Waypoint Identifier | Fly Over | Course °M(°T)  | Magnetic Variation | Distance (NM) | Turn Direction | Altitude (FT) | Speed (KIAS) | VPA/RDH (°/FT) | RNP Value    |
|---------------|------------------------------------|---------------------|----------|----------------|--------------------|---------------|----------------|---------------|--------------|----------------|--------------|
| 001           | IF                                 | SANGO               | -        | -              | -7.0               | -             | -              | +5000         | -            | -              | -            |
| 002           | TF                                 | OMBOX               | -        | 213<br>(206.1) | -7.0               | 14.2          | -              | 3500          | -            | -              | 1.0          |
| 003           | TF                                 | TH853               | -        | 213<br>(206.1) | -7.0               | 1.7           | -              | 2958          | -            | -3.00          | 0.10<br>0.30 |
| 004           | RF<br>Center:<br>THRF3<br>r=2.13NM | TH854               | -        | -              | -7.0               | 5.1           | L              | 1338          | -            | -3.00          | 0.10<br>0.30 |
| 005           | TF                                 | RW08                | Y        | 076<br>(069.4) | -7.0               | 3.2           | -              | 332           | -            | -3.00/50       | 0.10<br>0.30 |
| 006           | TF                                 | TH861               | -        | 076<br>(069.5) | -7.0               | 3.1           | -              | -             | -            | -              | 0.10<br>0.30 |
| 007           | RF<br>Center:<br>THRF4<br>r=3.67NM | TH864               | -        | -              | -7.0               | 5.7           | L              | -             | -            | -              | 1.0          |
| 008           | TF                                 | SANGO               | -        | 347<br>(340.3) | -7.0               | 11.0          | -              | 5000          | -            | -              | 1.0          |

| Path | Waypoint Identifier | Inbound Course °M(°T) | Magnetic Variation | Outbound Time (MIN) | Turn Direction | Minimum Altitude (FT) | Maximum Altitude (FT) | Speed (KIAS)     | RNP Value |
|------|---------------------|-----------------------|--------------------|---------------------|----------------|-----------------------|-----------------------|------------------|-----------|
| Hold | SANGO               | 190<br>(182.8)        | -6.9               | 1.0 (-14000)        | R              | 5000                  | FL140                 | -230<br>(-14000) | 1.0       |

Waypoint Coordinates

| Waypoint Identifier | Coordinates              | RF Arc Center Identifier | Coordinates              |
|---------------------|--------------------------|--------------------------|--------------------------|
| SANGO               | 332250.44N / 1394814.02E | THRF3                    | 330736.61N / 1394208.22E |
| OMBOX               | 331005.17N / 1394045.30E | THRF4                    | 331116.16N / 1394832.59E |
| TH853               | 330833.19N / 1393951.52E |                          |                          |
| TH854               | 330536.55N / 1394301.55E |                          |                          |
| RW08                | 330643.03N / 1394633.07E |                          |                          |
| TH861               | 330749.27N / 1395004.24E |                          |                          |
| TH864               | 331230.95N / 1395239.67E |                          |                          |

CHANGE : New PROC.

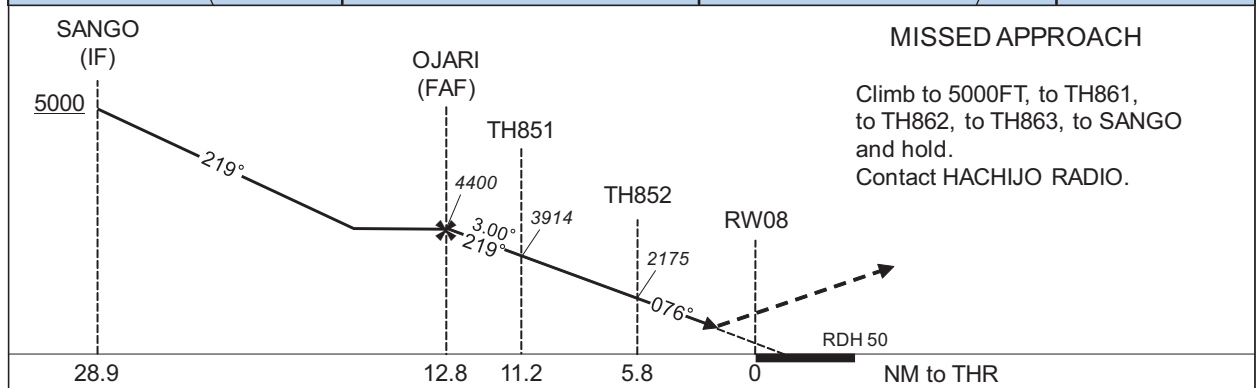
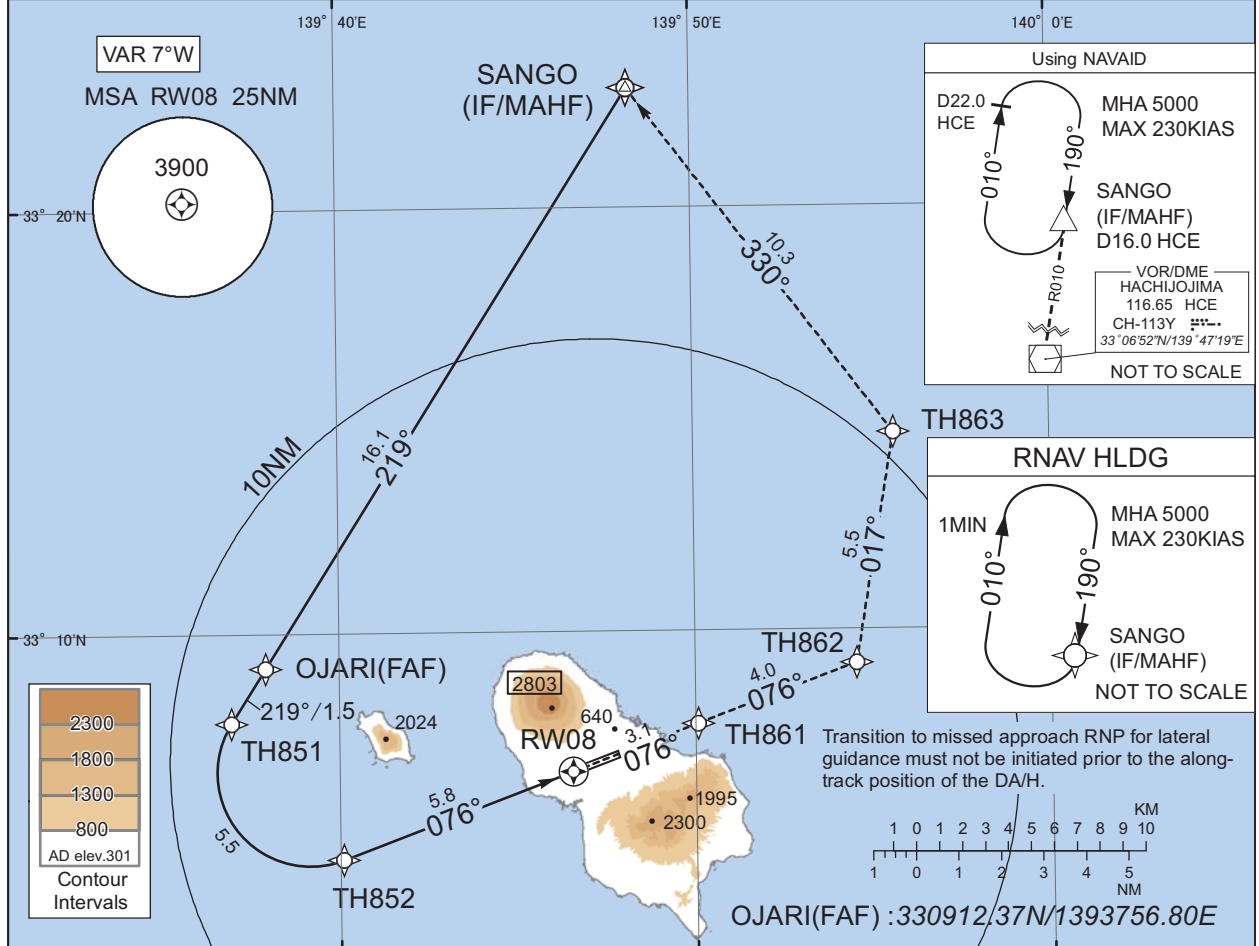
INSTRUMENT APPROACH CHART

RJTH / HACHIOJIMA

RNP Y RWY08(AR)

|  |                        |   |          |
|--|------------------------|---|----------|
| TOKYO CONTROL<br>125.9 - 134.15<br>318.2 - 227.3 | RNP AR<br>RF required. | HACHIOJO RADIO<br>118.7<br>AFIS provided by<br>New Chitose Airport Office | NO RADAR |
|--|------------------------|---|----------|

For uncompensated Baro-VNAV systems, procedure not authorized below 0°C / above 45°C



Missed APCH climb gradient MNM 5.0%

| CAT | RNP 0.29 |      | RNP 0.30 |      |
|-----|----------|------|----------|------|
|     | DA(H)    | CMV  | DA(H)    | CMV  |
| A   | -        | -    | -        | -    |
| B   | -        | -    | -        | -    |
| C   | 806(524) | 2000 | 824(542) | 2000 |
| D   | -        | -    | -        | -    |

MINIMA with Missed APCH climb gradient of 2.5% are not established.

**Authorization Required**

CHANGE : PROC renamed.

INSTRUMENT APPROACH CHART

RJTH / HACHIJOJIMA

RNP Y RWY08(AR)

Coding Table

| Serial Number | Path Descriptor                    | Waypoint Identifier | Fly Over | Course °M(°T)  | Magnetic Variation | Distance (NM) | Turn Direction | Altitude (FT) | Speed (KIAS) | VPA/ RDH (°/FT) | RNP Value    |
|---------------|------------------------------------|---------------------|----------|----------------|--------------------|---------------|----------------|---------------|--------------|-----------------|--------------|
| 001           | IF                                 | SANGO               | -        | -              | -6.9               | -             | -              | +5000         | -            | -               | -            |
| 002           | TF                                 | OJARI               | -        | 219<br>(212.3) | -6.9               | 16.1          | -              | 4400          | -            | -               | 1.0          |
| 003           | TF                                 | TH851               | -        | 219<br>(212.2) | -6.9               | 1.5           | -              | 3914          | -            | -3.00           | 0.29<br>0.30 |
| 004           | RF<br>Center:<br>THRF1<br>r=2.19NM | TH852               | -        | -              | -6.9               | 5.5           | L              | 2175          | -            | -3.00           | 0.29<br>0.30 |
| 005           | TF                                 | RW08                | Y        | 076<br>(069.4) | -6.9               | 5.8           | -              | 332           | -            | -3.00/50        | 0.29<br>0.30 |
| 006           | TF                                 | TH861               | -        | 076<br>(069.5) | -6.9               | 3.1           | -              | -             | -            | -               | 0.29<br>0.30 |
| 007           | TF                                 | TH862               | -        | 076<br>(069.5) | -6.9               | 4.0           | -              | -             | -            | -               | 1.0          |
| 008           | TF                                 | TH863               | -        | 017<br>(009.6) | -6.9               | 5.5           | -              | -             | -            | -               | 1.0          |
| 009           | TF                                 | SANGO               | -        | 330<br>(323.0) | -6.9               | 10.3          | -              | 5000          | -            | -               | 1.0          |

| Path | Waypoint Identifier | Inbound Course °M(°T) | Magnetic Variation | Outbound Time (MIN) | Turn Direction | Minimum Altitude (FT) | Maximum Altitude (FT) | Speed (KIAS)     | RNP Value |
|------|---------------------|-----------------------|--------------------|---------------------|----------------|-----------------------|-----------------------|------------------|-----------|
| Hold | SANGO               | 190<br>(182.8)        | -6.9               | 1.0 (-14000)        | R              | 5000                  | FL140                 | -230<br>(-14000) | 1.0       |

Waypoint Coordinates

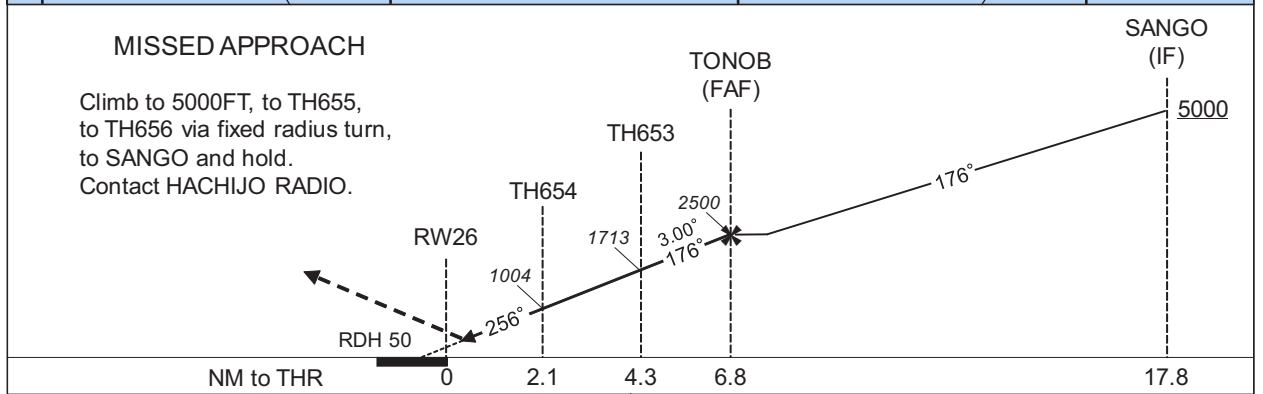
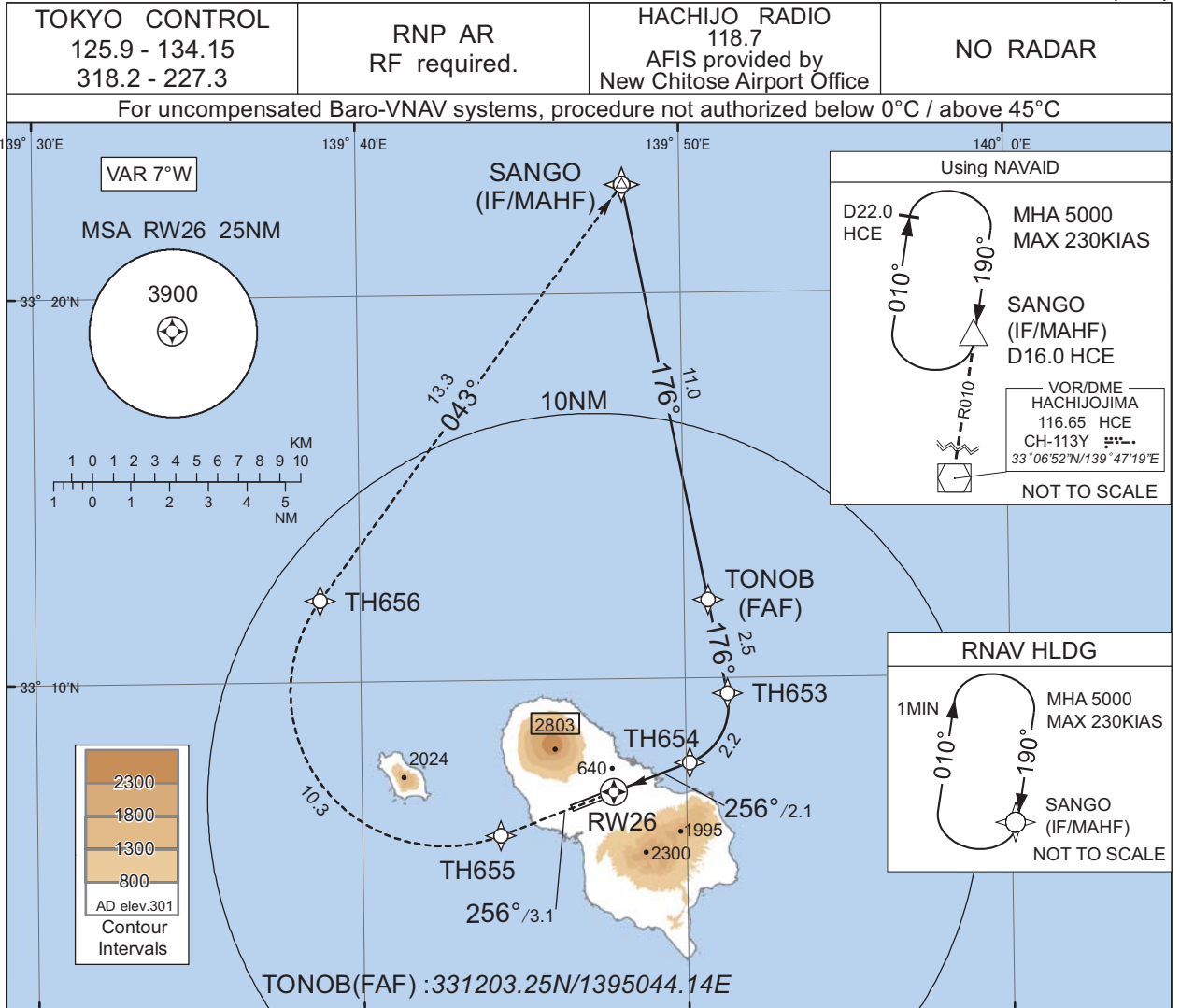
| Waypoint Identifier | Coordinates              | RF Arc Center Identifier | Coordinates              |
|---------------------|--------------------------|--------------------------|--------------------------|
| SANGO               | 332250.44N / 1394814.02E | THRF1                    | 330644.49N / 1393910.78E |
| OJARI               | 330912.37N / 1393756.80E |                          |                          |
| TH851               | 330754.90N / 1393658.54E |                          |                          |
| TH852               | 330441.17N / 1394005.63E |                          |                          |
| RW08                | 330643.03N / 1394633.07E |                          |                          |
| TH861               | 330749.27N / 1395004.24E |                          |                          |
| TH862               | 330913.15N / 1395432.21E |                          |                          |
| TH863               | 331439.22N / 1395537.92E |                          |                          |

CHANGE : PROC renamed.

INSTRUMENT APPROACH CHART

RJTH / HACHIOJIMA

RNP Z RWY26(AR)



CHANGE : New PROC.

Missed APCH climb gradient MNM 5.0%

| CAT | THR elev. 284 |      | AD elev. 301 |      |
|-----|---------------|------|--------------|------|
|     | RNP 0.10      |      | RNP 0.30     |      |
|     | DA(H)         | CMV  | DA(H)        | CMV  |
| A   | -             | -    | -            | -    |
| B   | -             | -    | -            | -    |
| C   | 545(261)      | 1200 | 844(560)     | 1600 |
| D   | -             | -    | -            | -    |

**Authorization Required**

MINIMA with Missed APCH climb gradient of 2.5% are not established.

INSTRUMENT APPROACH CHART

RJTH / HACHIJOJIMA

RNP Z RWY26(AR)

Coding Table

| Serial Number | Path Descriptor                    | Waypoint Identifier | Fly Over | Course °M(°T)  | Magnetic Variation | Distance (NM) | Turn Direction | Altitude (FT) | Speed (KIAS) | VPA/RDH (°/FT) | RNP Value    |
|---------------|------------------------------------|---------------------|----------|----------------|--------------------|---------------|----------------|---------------|--------------|----------------|--------------|
| 001           | IF                                 | SANGO               | -        | -              | -7.0               | -             | -              | +5000         | -            | -              | -            |
| 002           | TF                                 | TONOB               | -        | 176<br>(169.0) | -7.0               | 11.0          | -              | 2500          | -            | -              | 1.0          |
| 003           | TF                                 | TH653               | -        | 176<br>(169.0) | -7.0               | 2.5           | -              | 1713          | -            | -3.00          | 0.10<br>0.30 |
| 004           | RF<br>Center:<br>THRF5<br>r=1.58NM | TH654               | -        | -              | -7.0               | 2.2           | R              | 1004          | -            | -3.00          | 0.10<br>0.30 |
| 005           | TF                                 | RW26                | Y        | 256<br>(249.5) | -7.0               | 2.1           | -              | 334           | -            | -3.00/50       | 0.10<br>0.30 |
| 006           | TF                                 | TH655               | -        | 256<br>(249.5) | -7.0               | 3.1           | -              | -             | -            | -              | 0.10<br>0.30 |
| 007           | RF<br>Center:<br>THRF6<br>r=4.00NM | TH656               | -        | -              | -7.0               | 10.3          | R              | -             | -            | -              | 0.30         |
| 008           | TF                                 | SANGO               | -        | 043<br>(036.4) | -7.0               | 13.3          | -              | 5000          | -            | -              | 1.0          |

| Path | Waypoint Identifier | Inbound Course °M(°T) | Magnetic Variation | Outbound Time (MIN) | Turn Direction | Minimum Altitude (FT) | Maximum Altitude (FT) | Speed (KIAS)     | RNP Value |
|------|---------------------|-----------------------|--------------------|---------------------|----------------|-----------------------|-----------------------|------------------|-----------|
| Hold | SANGO               | 190<br>(182.8)        | -6.9               | 1.0 (-14000)        | R              | 5000                  | FL140                 | -230<br>(-14000) | 1.0       |

Waypoint Coordinates

| Waypoint Identifier | Coordinates              | RF Arc Center Identifier | Coordinates              |
|---------------------|--------------------------|--------------------------|--------------------------|
| SANGO               | 332250.44N / 1394814.02E | THRF5                    | 330919.08N / 1394926.90E |
| TONOB               | 331203.25N / 1395044.14E | THRF6                    | 330944.94N / 1394235.78E |
| TH653               | 330937.26N / 1395117.91E |                          |                          |
| TH654               | 330749.94N / 1395006.37E |                          |                          |
| RW26                | 330705.72N / 1394745.36E |                          |                          |
| TH655               | 330559.88N / 1394415.73E |                          |                          |
| TH656               | 331208.05N / 1393846.29E |                          |                          |

CHANGE : New PROC.



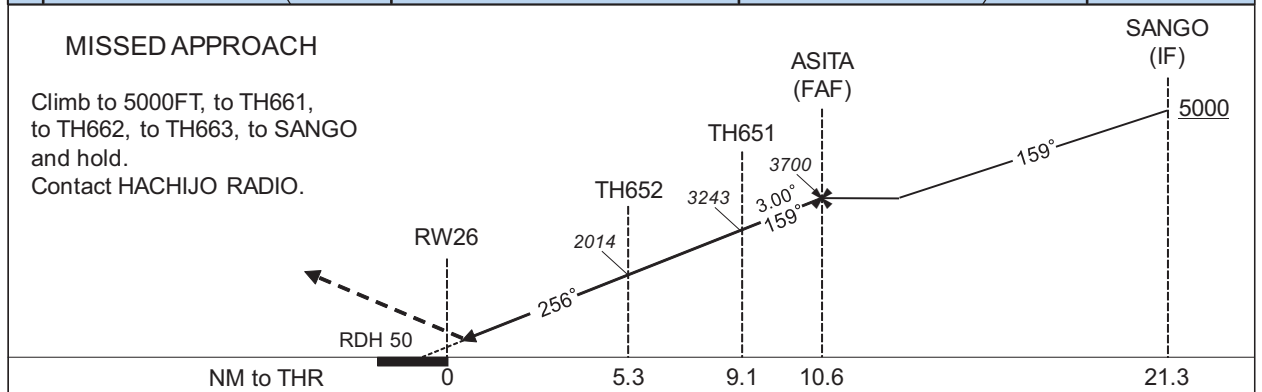
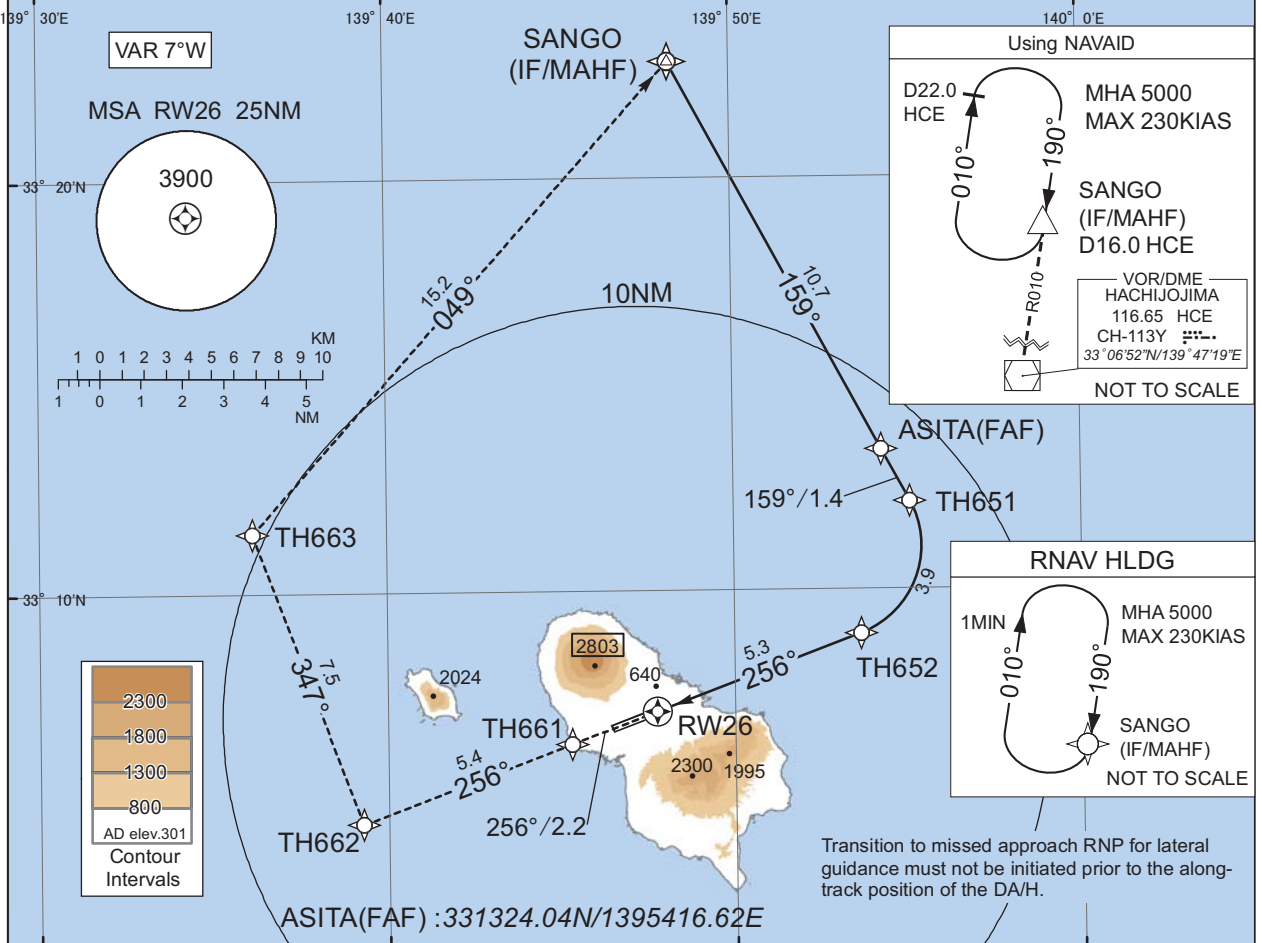
INSTRUMENT APPROACH CHART

RJTH / HACHIOJIMA

RNP Y RWY26(AR)

|  |                        |   |          |
|--|------------------------|---|----------|
| TOKYO CONTROL<br>125.9 - 134.15<br>318.2 - 227.3 | RNP AR<br>RF required. | HACHIOJO RADIO<br>118.7<br>AFIS provided by<br>New Chitose Airport Office | NO RADAR |
|--|------------------------|---|----------|

For uncompensated Baro-VNAV systems, procedure not authorized below 0°C / above 45°C



Missed APCH climb gradient MNM 5.9% for RNP 0.21  
Missed APCH climb gradient MNM 5.0% for RNP 0.30

| CAT | RNP 0.21 |      | RNP 0.30 |      |
|-----|----------|------|----------|------|
|     | DA(H)    | CMV  | DA(H)    | CMV  |
| A   | -        | -    | -        | -    |
| B   | -        | -    | -        | -    |
| C   | 617(333) | 1400 | 844(560) | 1600 |
| D   | -        | -    | -        | -    |

**Authorization Required**

MINIMA with Missed APCH climb gradient of 2.5% are not established.

CHANGE : PROC renamed.

INSTRUMENT APPROACH CHART

RJTH / HACHIJOJIMA

RNP Y RWY26(AR)

Coding Table

| Serial Number | Path Descriptor                    | Waypoint Identifier | Fly Over | Course °M(°T)  | Magnetic Variation | Distance (NM) | Turn Direction | Altitude (FT) | Speed (KIAS) | VPA/RDH (°/FT) | RNP Value    |
|---------------|------------------------------------|---------------------|----------|----------------|--------------------|---------------|----------------|---------------|--------------|----------------|--------------|
| 001           | IF                                 | SANGO               | -        | -              | -6.9               | -             | -              | +5000         | -            | -              | -            |
| 002           | TF                                 | ASITA               | -        | 159<br>(151.8) | -6.9               | 10.7          | -              | 3700          | -            | -              | 1.0          |
| 003           | TF                                 | TH651               | -        | 159<br>(151.9) | -6.9               | 1.4           | -              | 3243          | -            | -3.00          | 0.21<br>0.30 |
| 004           | RF<br>Center:<br>THRF2<br>r=2.26NM | TH652               | -        | -              | -6.9               | 3.9           | R              | 2014          | -            | -3.00          | 0.21<br>0.30 |
| 005           | TF                                 | RW26                | Y        | 256<br>(249.5) | -6.9               | 5.3           | -              | 334           | -            | -3.00/50       | 0.21<br>0.30 |
| 006           | TF                                 | TH661               | -        | 256<br>(249.5) | -6.9               | 2.2           | -              | -             | -            | -              | 0.21<br>0.30 |
| 007           | TF                                 | TH662               | -        | 256<br>(249.4) | -6.9               | 5.4           | -              | -             | -            | -              | 1.0          |
| 008           | TF                                 | TH663               | -        | 347<br>(339.6) | -6.9               | 7.5           | -              | -             | -            | -              | 1.0          |
| 009           | TF                                 | SANGO               | -        | 049<br>(041.6) | -6.9               | 15.2          | -              | 5000          | -            | -              | 1.0          |

| Path | Waypoint Identifier | Inbound Course °M(°T) | Magnetic Variation | Outbound Time (MIN) | Turn Direction | Minimum Altitude (FT) | Maximum Altitude (FT) | Speed (KIAS)     | RNP Value |
|------|---------------------|-----------------------|--------------------|---------------------|----------------|-----------------------|-----------------------|------------------|-----------|
| Hold | SANGO               | 190<br>(182.8)        | -6.9               | 1.0 (-14000)        | R              | 5000                  | FL140                 | -230<br>(-14000) | 1.0       |

Waypoint Coordinates

| Waypoint Identifier | Coordinates              | RF Arc Center Identifier | Coordinates              |
|---------------------|--------------------------|--------------------------|--------------------------|
| SANGO               | 332250.44N / 1394814.02E | THRF2                    | 331103.88N / 1395242.68E |
| ASITA               | 331324.04N / 1395416.62E |                          |                          |
| TH651               | 331208.17N / 1395505.07E |                          |                          |
| TH652               | 330856.50N / 1395339.00E |                          |                          |
| RW26                | 330705.72N / 1394745.36E |                          |                          |
| TH661               | 330619.39N / 1394517.79E |                          |                          |
| TH662               | 330425.68N / 1393916.49E |                          |                          |
| TH663               | 331127.97N / 1393608.44E |                          |                          |

CHANGE : PROC renamed.

RJTH / HACHIOJIMA

Visual REP

VAR 7°W(2024) / 4°W

HACHIOJIO RADIO  
118.7

10NM N

5NM from ARP  
HACHIOJIOJIMA INFORMATION ZONE  
At or below 3000FT



Webメルカトル図法(球体補正) / Web Mercator projection

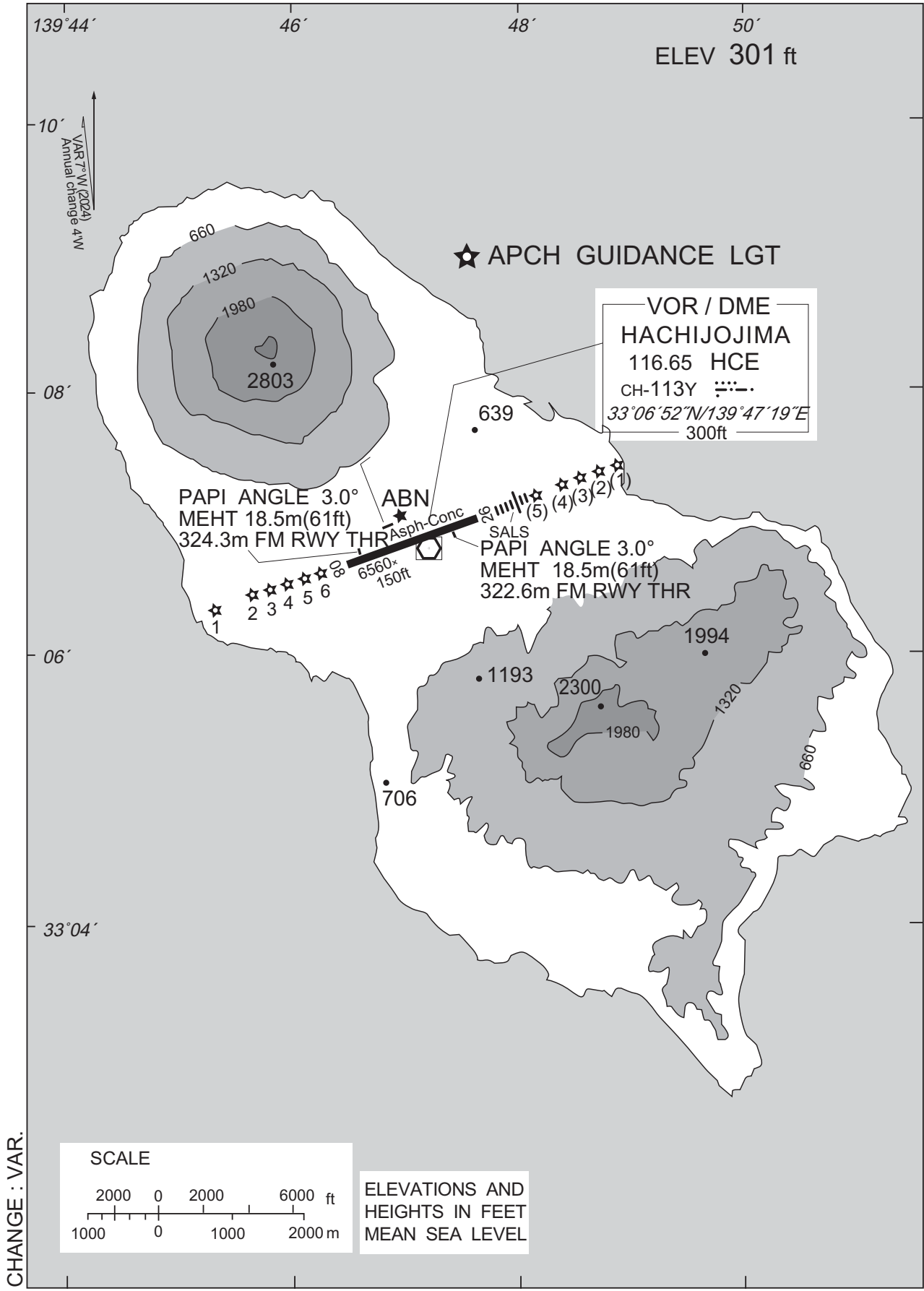
CHANGE : VAR.

※図中に標高を示す数字がある場合、単位はメートル(m)である。The unit of measurement used to express elevation is meter(m).

| Call sign | BRG / DIST from ARP | Remarks            |
|-----------|---------------------|--------------------|
| 10NM N    | 360°T / 10.0NM      | 海上<br>Over the sea |

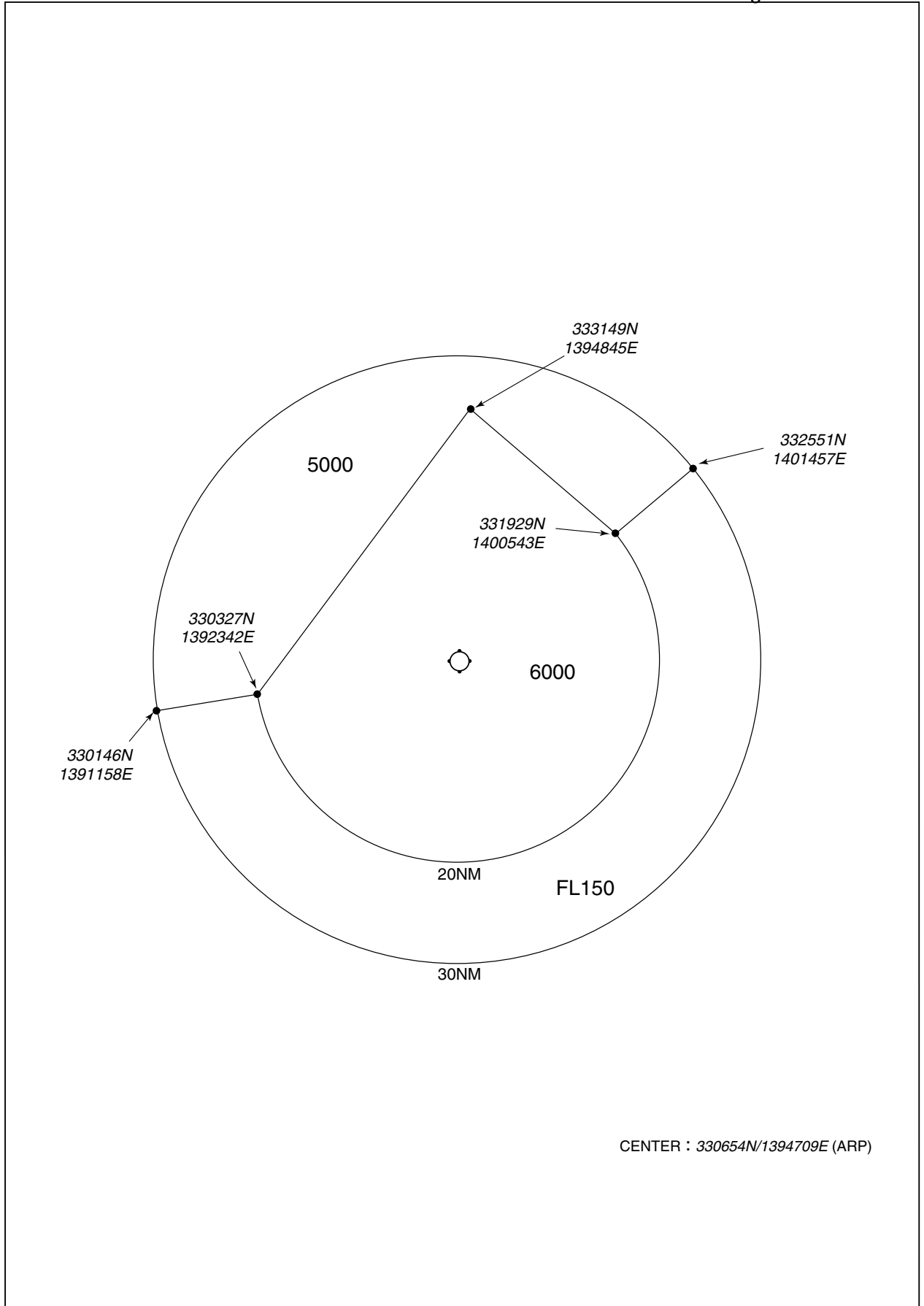
RJTH / HACHIOJIMA

LDG CHART



RJTH / HACHIOJIMA

Minimum Vectoring Altitude CHART



**INTENTIONALLY LEFT BLANK**