

STANDARD DEPARTURE CHART-INSTRUMENT

RJTJ / IRUMA

SID

IRUMA NORTH DEPARTURE

Take off Runway 35, turn right (take off Runway 17, turn left within 5NM from RWY end), climb on heading 010 degrees for Radar vectors on course.

Maintain 2,000 feet for 180 seconds after take off.

Note 1: When take off Runway 35, following climb gradient should be maintained until 900 feet.

Speed (Knots)	60	120	180	240	300	360
Rate (Feet/Min)	210	420	630	840	1050	1260

Note 2: When take off Runway 17, following climb gradient should be maintained until 600 feet.

Speed (Knots)	60	120	180	240	300	360
Rate (Feet/Min)	250	500	750	1000	1250	1500

OMIYA TWO DEPARTURE

RWY35 : Turn right within YLT 5DME to intercept and proceed via YLT R070 to OMIYA. Maintain 8000FT or below until OMIYA.

RWY17 : Turn left within YLT 5DME to intercept and proceed via YLT R070 to OMIYA. Maintain 8000FT or below until OMIYA.

Note : When take off from Runway 17, maintain rate of climb 209FT/NM or more until passing 750FT.

CHANGE : IRUMA NORTH DEPARTURE(after TKOF RWY17)

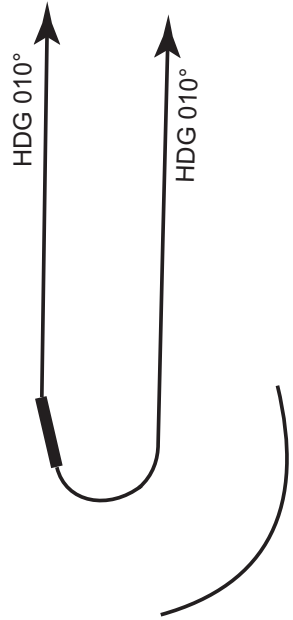
STANDARD DEPARTURE CHART-INSTRUMENT

RJTJ / IRUMA

SID

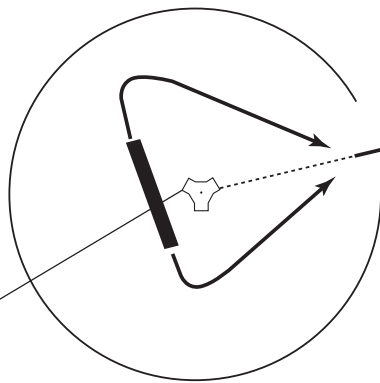
IRUMA NORTH DEPARTURE

MAG VAR 8°W (2017)



OMIYA TWO DEPARTURE

TACAN
IRUMA
1004 YLT
CH-43X
35°50'24"N/139°24'54"E



R070/10DME

△ OMIYA
Maintain 8000FT or below

WITHIN YLT 5DME

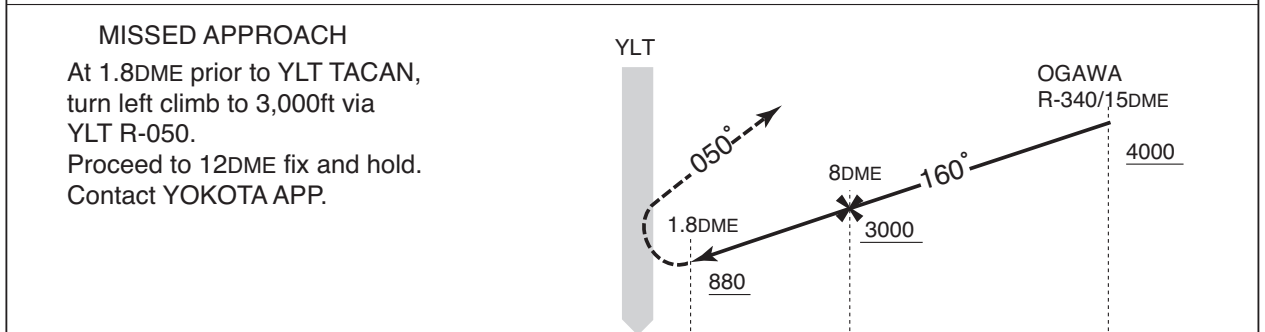
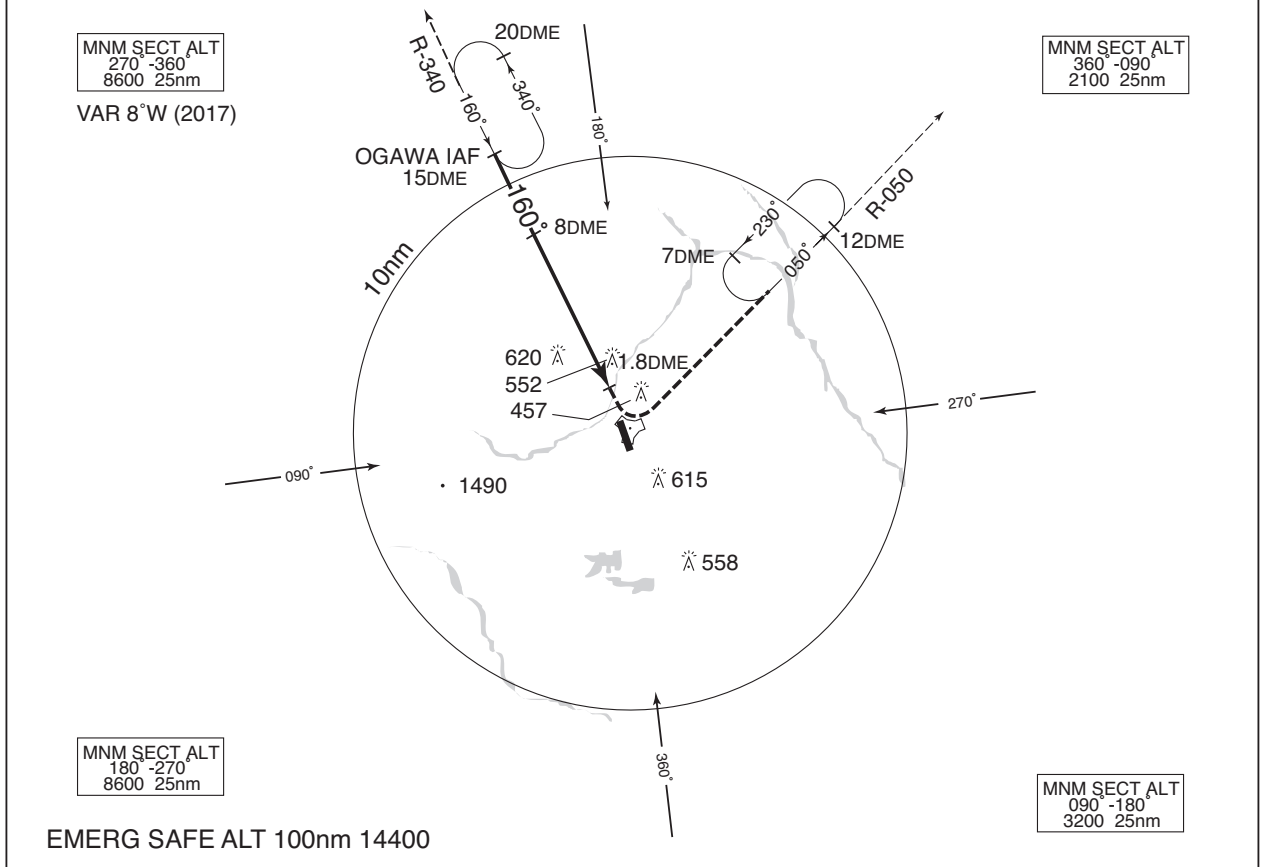
CHANGE : IRUMA NORTH DEPARTURE("5NM FM RWY end" added)

INSTRUMENT APPROACH CHART

RJTJ / IRUMA

TACAN RWY17

YOKOTA APP 118.3 - 120.7 261.4 - 270.6	IRUMA TACAN 1004 YLT CH-43X 35°50'24"N / 139°24'54"E	IRUMA TOWER 126.2 - 122.05 236.8 - 322.2	RADAR AVBL CALL YOKOTA APP
--	---	--	----------------------------------



MINIMA		THR elev. 259	AD elev. 295	
CAT			CIRCLING	
	MDA(H)	RVR/CMV	MDA(H)	VIS
A	880 (621)	1500	880 (585)	1600
B				2400
C				1800
D				2000

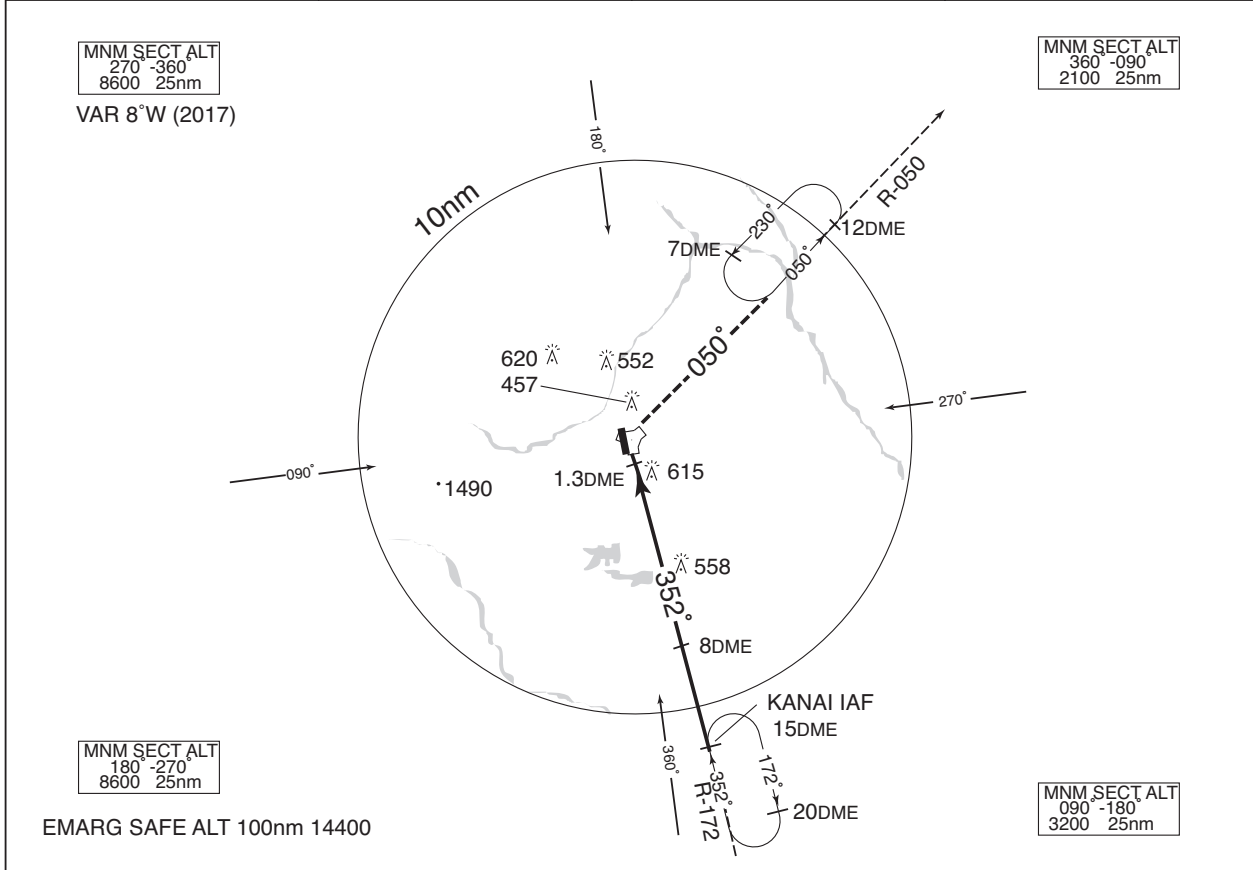
Circling to EAST side of RWY only.

INSTRUMENT APPROACH CHART

RJTJ / IRUMA

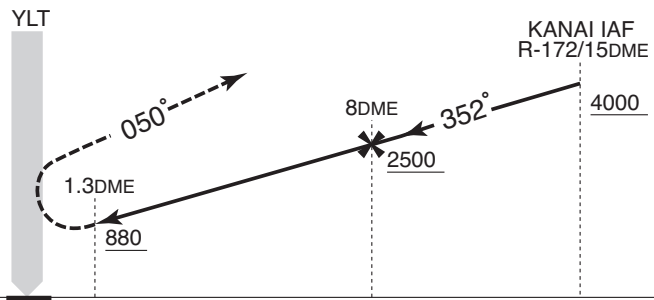
TACAN RWY35

YOKOTA APP 118.3 - 120.7 261.4 - 270.6	IRUMA TACAN 1004 YLT CH-43X 35°50'24"N / 139°24'54"E	IRUMA TOWER 126.2 - 122.05 236.8 - 322.2	RADAR AVBL CALL YOKOTA APP
--	---	--	----------------------------------



MISSED APPROACH

At 1.3DME prior to YLT TACAN, turn right, climb to 3,000ft via YLT R-050. Proceed to 12DME fix and hold.
Contact YOKOTA APP.



MINIMA		THR elev. 276	AD elev. 295	
CAT			CIRCLING	
	MDA(H)	RVR/CMV	MDA(H)	VIS
A	880 (604)	1400	880 (585)	1600
B		1500		
C		1600	2400	
D		1800	920 (625)	3200

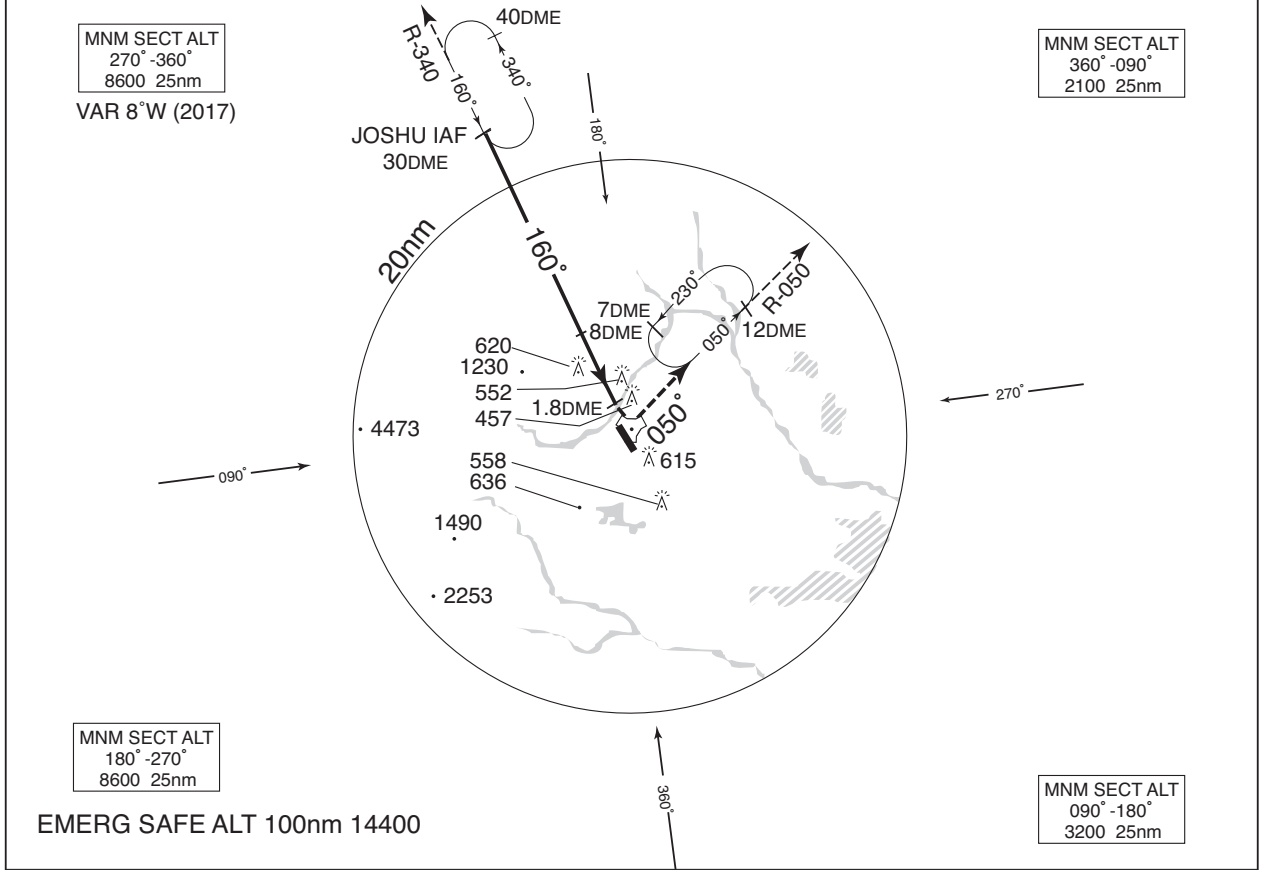
Circling to EAST side of RWY only.

INSTRUMENT APPROACH CHART

RJTJ / IRUMA

HI-TACAN RWY17

YOKOTA APP 118.3 - 120.7 261.4 - 270.6	IRUMA TACAN 1004 YLT CH-43X 35°50'24"N / 139°24'54"E	IRUMA TOWER 126.2 - 122.05 236.8 - 322.2	RADAR AVBL CALL YOKOTA APP
--	---	--	----------------------------------



MISSED APPROACH

At 1.8DME prior to YLT TACAN, turn left, climb to 3,000ft via YLT R-050. Proceed to 12DME fix and hold. Contact YOKOTA APP.

CAT	MINIMA		THR elev. 259	AD elev. 295		
	MDA(H)	RVR/CMV	CIRCLING			
A	880 (621)	1500	880 (585)	1600		
B						
C					1800	2400
D					2000	920 (625)

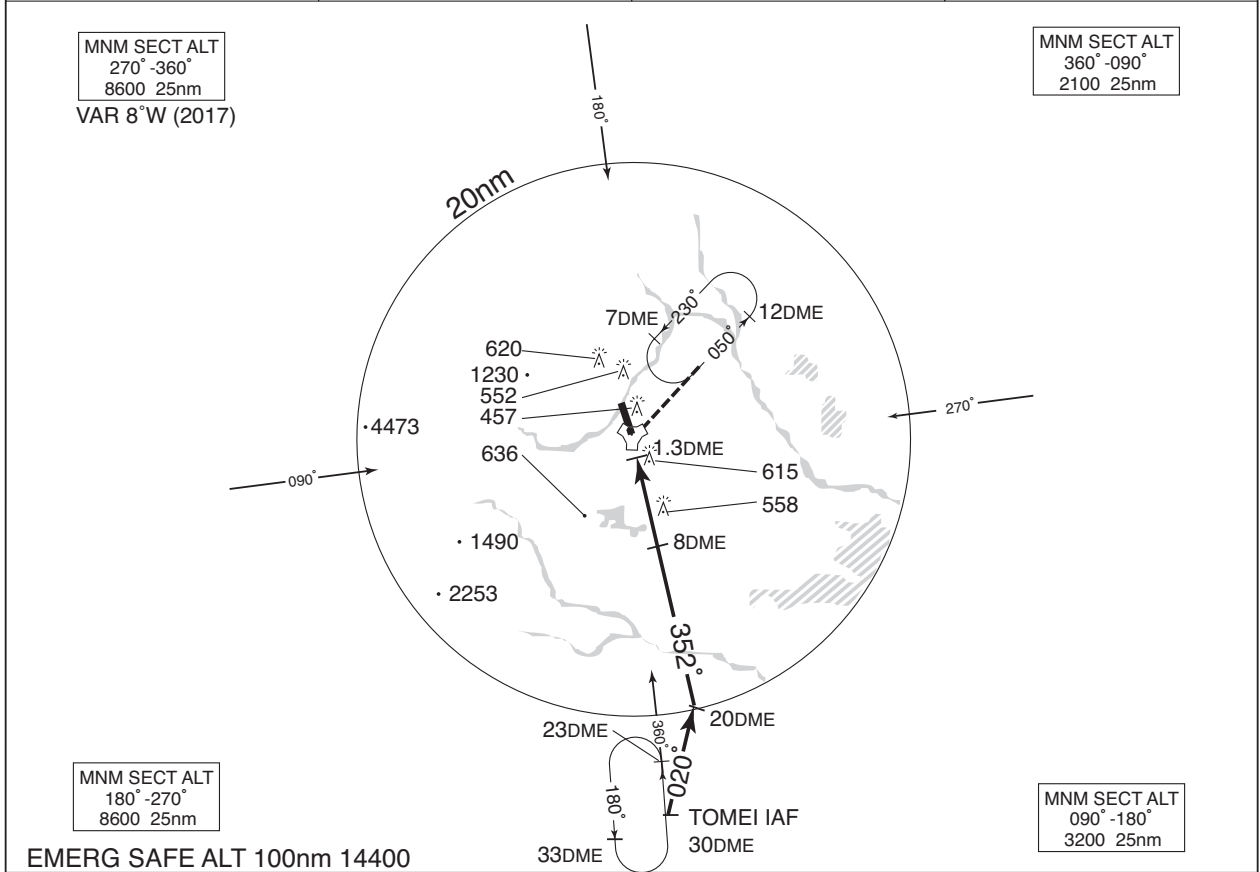
Circling to EAST side of RWY only.

INSTRUMENT APPROACH CHART

RJTJ / IRUMA

HI - TACAN RWY35

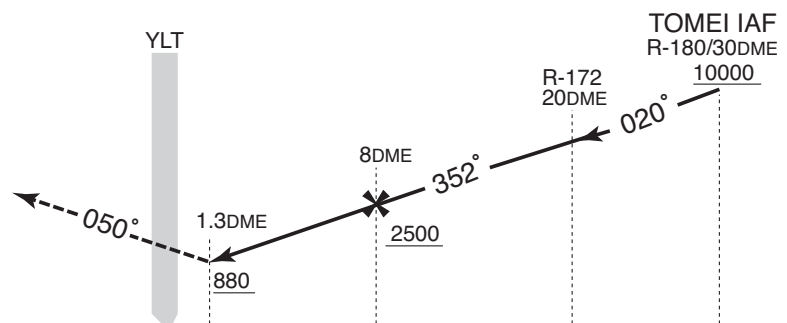
YOKOTA APP 118.3 - 120.7 261.4 - 270.6	IRUMA TACAN 1004 YLT CH-43X 35°50'24"N / 139°24'54"E	IRUMA TOWER 126.2 - 122.05 236.8 - 322.2	RADAR AVBL CALL YOKOTA APP
--	---	--	----------------------------------



EMERG SAFE ALT 100nm 14400

MISSED APPROACH

At 1.3DME prior to YLT TACAN, turn right, climb to 3,000ft via YLT R-050. Proceed to 12DME fix and hold. Contact YOKOTA APP.



MINIMA		THR elev. 276	AD elev. 295
CAT	CIRCLING		
	MDA(H)	RVR/CMV	MDA(H) VIS
A	880 (604)	1400	880 (585) 1600
B		1500	
C		1600	2400
D		1800	920 (625) 3200

Circling to EAST side of RWY only.