

STANDARD DEPARTURE CHART-INSTRUMENT

RJTK / KISARAZU

SID

KOSKA ONE DEPARTURE

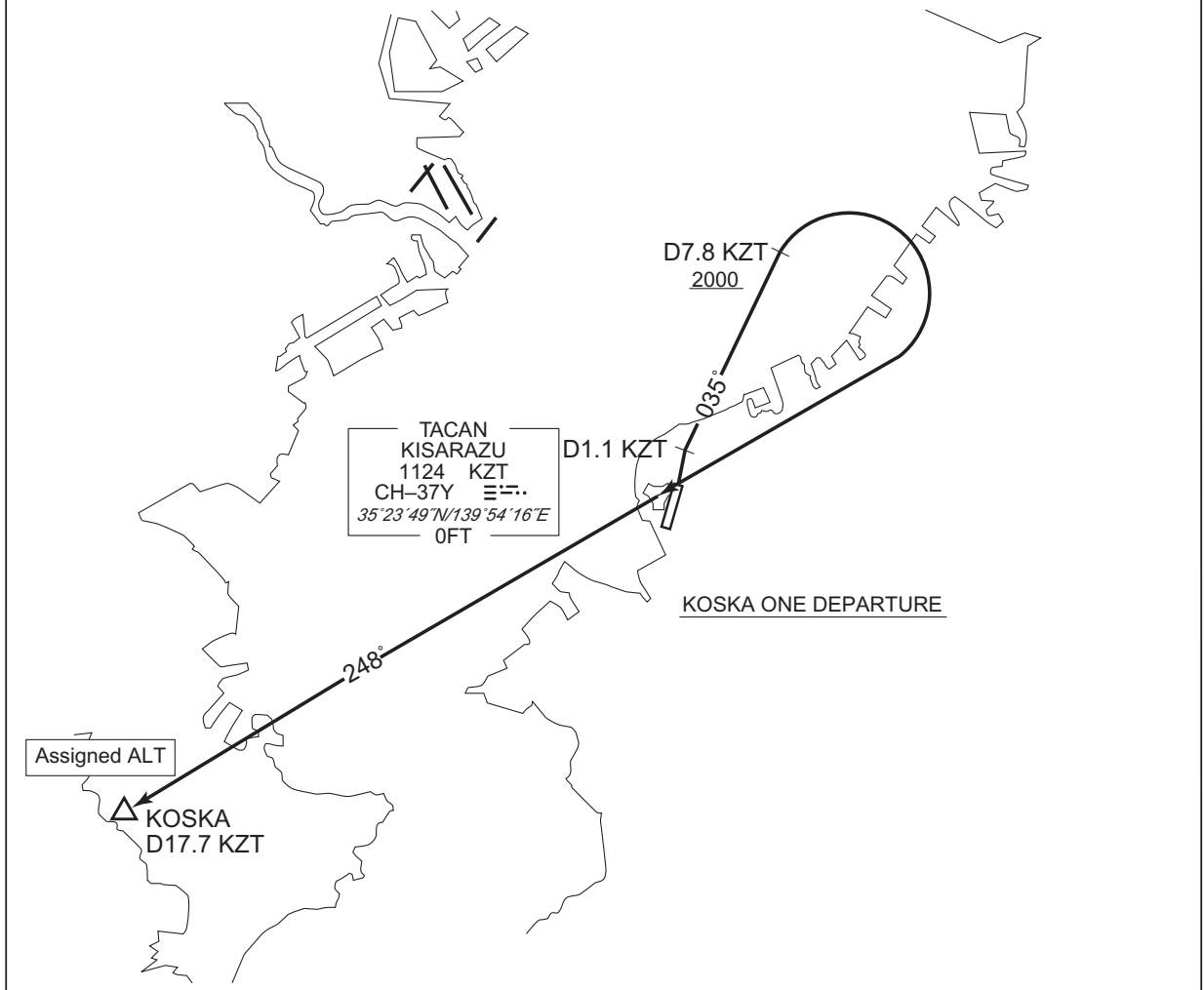
RWY 02 : Climb RWY HDG until KZT 1.1DME/0.4NM from RWY end, then via KZT R-035 to 7.8DME, turn right, proceed to KZT TACAN, then via KZT R-248 to KOSKA.

Cross KZT R-035/7.8DME at or above 2,000FT, cross KOSKA at assigned altitude.

RWY 20 : (Not established)

NOTE : Obstruction exists.

Maximum 56' MSL height trees within 0.3NM of RWY02 DER.



STANDARD DEPARTURE CHART-INSTRUMENT

RJTK / KISARAZU

SID

TSUGA TWO DEPARTURE

RWY 02 : Climb RWY HDG until KZT 1.1DME/0.4NM from RWY end, then via KZT R-035 to 7.8DME, turn right to intercept and proceed via KZT R-053 to TSUGA.

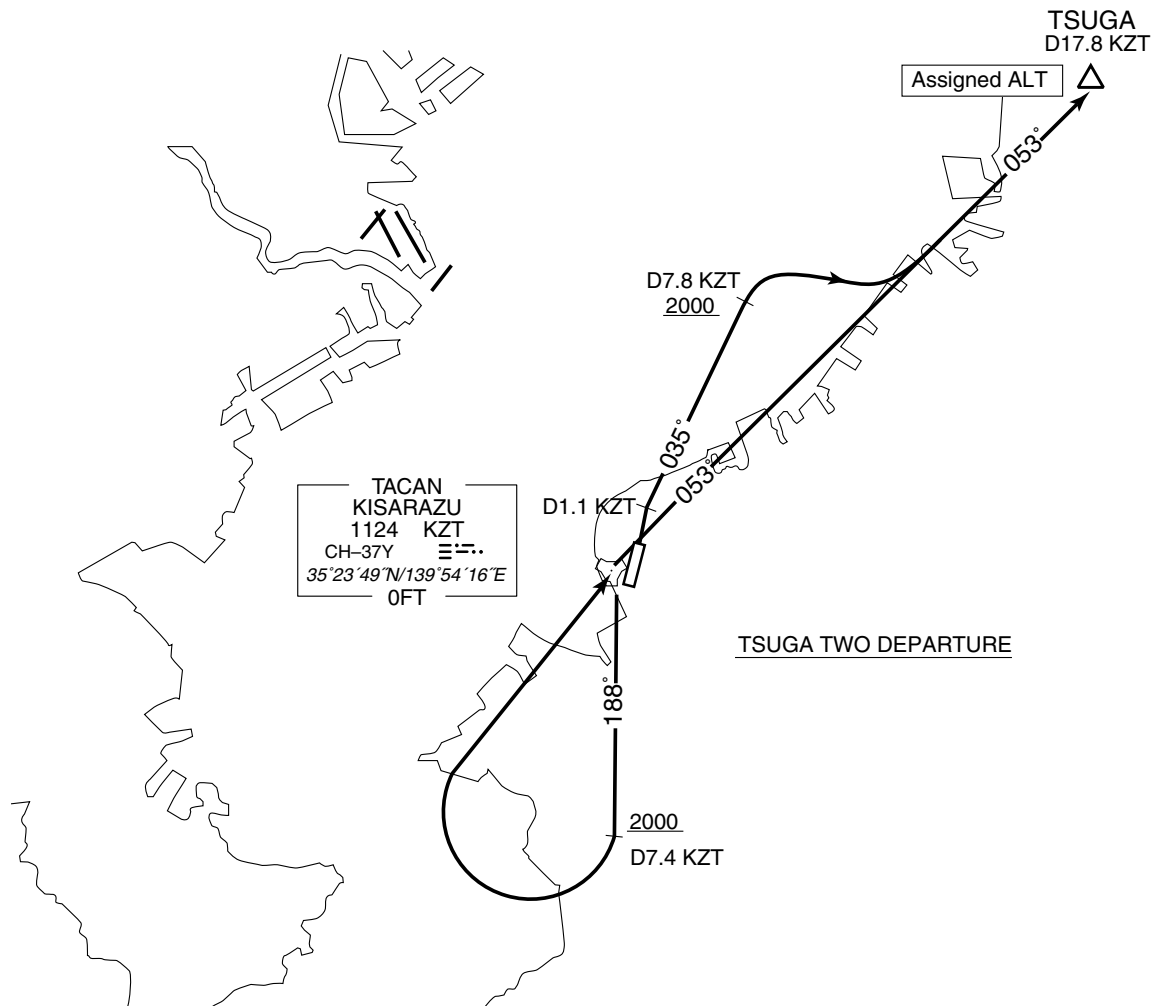
Cross KZT R-035/7.8DME at or above 2,000FT,...

RWY 20 : Climb via KZT R-188 to 7.4DME, turn right proceed to KZT TACAN, then via KZT R-053 to TSUGA.

Cross KZT R-188/7.4DME at or above 2,000FT,...

...cross TSUGA at assigned altitude.

NOTE : Obstruction exists.
Maximum 56' MSL height trees within 0.3NM of RWY02 DER.



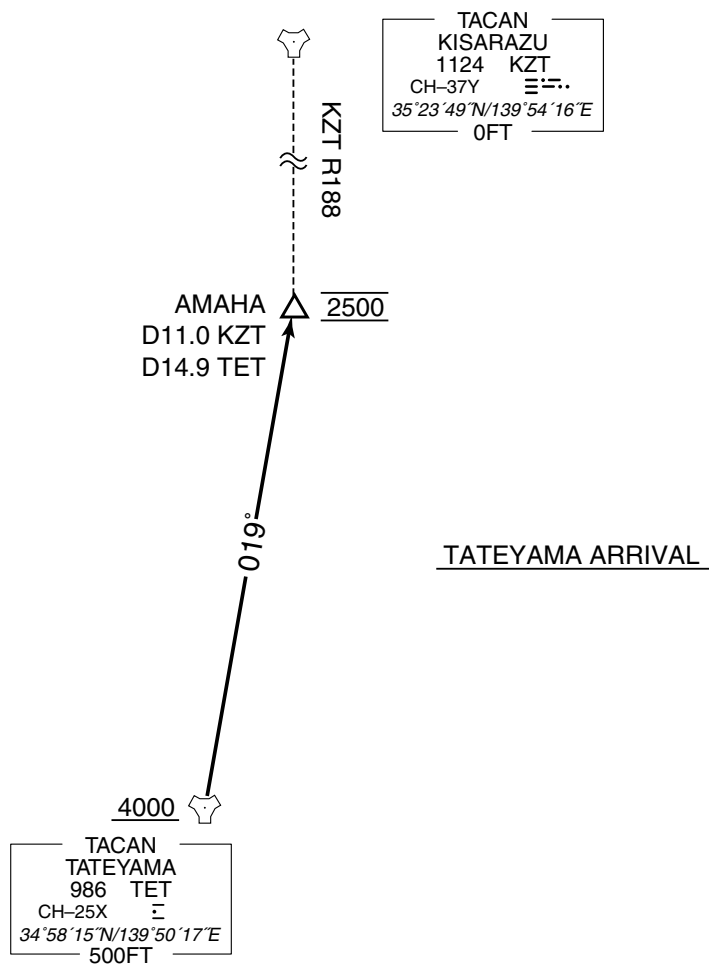
STANDARD ARRIVAL CHART -INSTRUMENT

RJTK / KISARAZU

STAR

TATEYAMA ARRIVAL

From over TET TACAN, via TET R-019 to AMAHA.
Cross TET TACAN at or above 4000FT. Cross AMAHA at 2500FT.

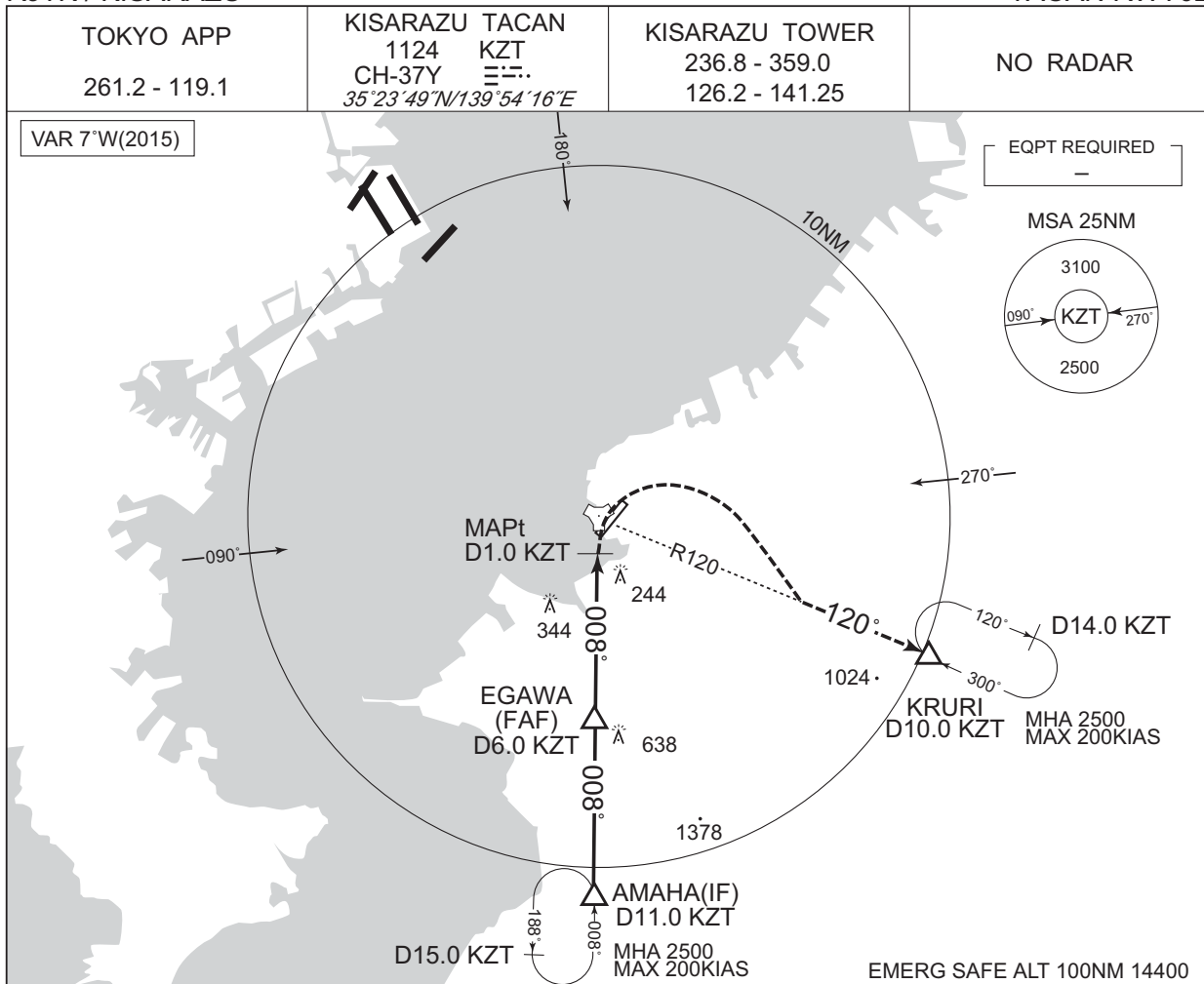


INTENTIONALLY LEFT BLANK

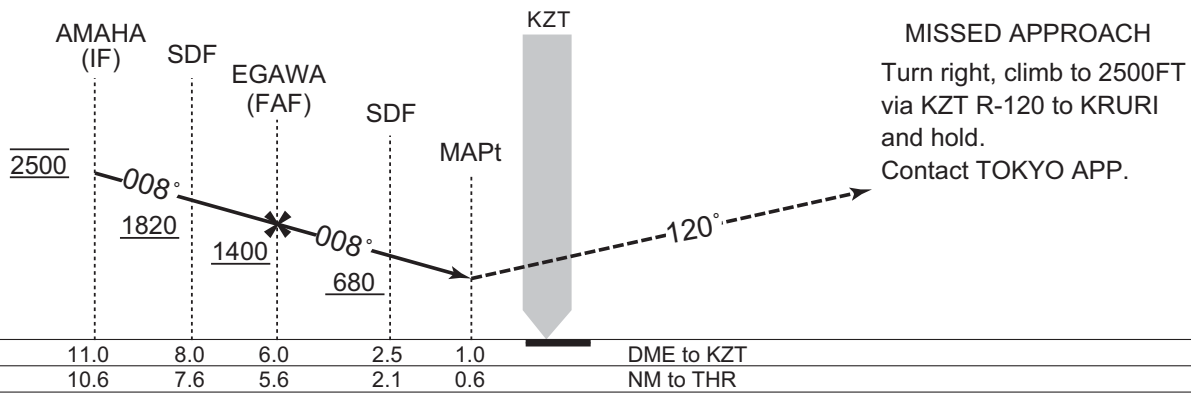
INSTRUMENT APPROACH CHART

RJTK / KISARAZU

TACAN RWY02



CHANGE : MDA(H) for circling.



MISSED APPROACH
Turn right, climb to 2500FT via KZT R-120 to KRURI and hold.
Contact TOKYO APP.

MINIMA		THR elev. 8		AD elev. 10		
CAT	MDA(H)		CMV		CIRCLING	
					MDA(H)	VIS
A	600 (590)		1500		600 (590)	1600
B			2000		980 (970)	2400
C					1040 (1030)	3200
D						