

STANDARD DEPARTURE CHART-INSTRUMENT

RJTL / SHIMOFUSA

SID

UTSUNOMIYA ONE DEPARTURE

RWY01 : Climb RWY HDG to SHT 2.0DME, ...

RWY19 : Climb RWY HDG to SHT 2.5DME, turn left HDG 331° to intercept and proceed...
...via SHT R016 to GAMAR, turn left ,via JDT R161 to JDT TACAN.

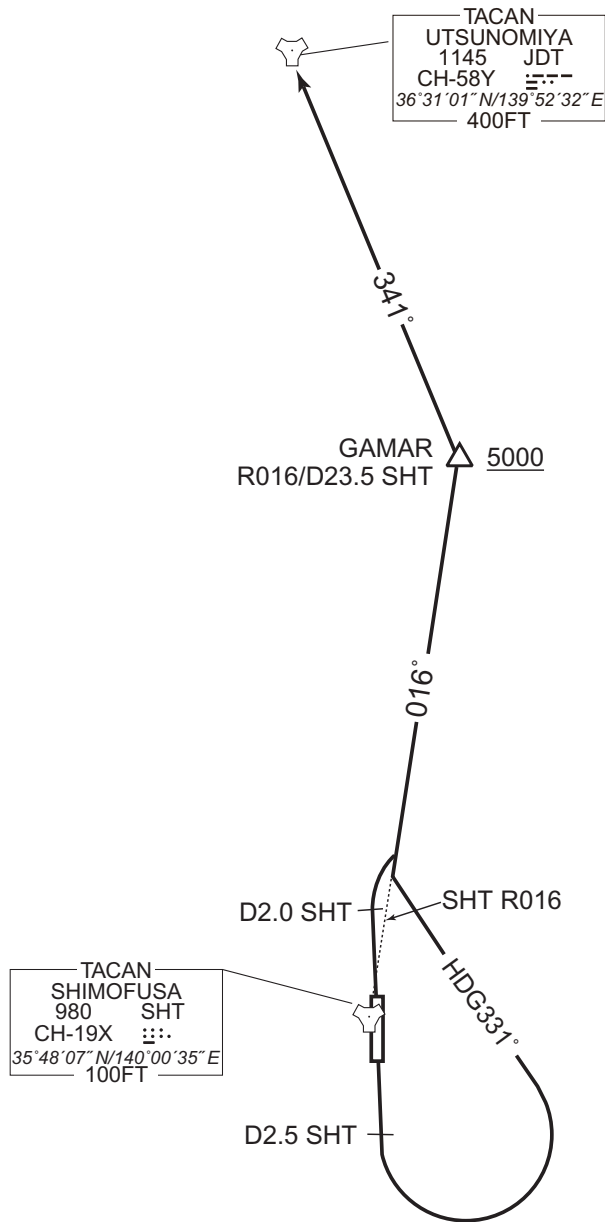
Cross GAMAR at or above 5000FT.

Note RWY01 : 5.0% climb gradient required up to 600FT.

OBST ALT 251FT located at 1.56NM 020° FM end of RWY01.

RWY19 : 5.0% climb gradient required up to 700FT.

OBST ALT 314FT located at 1.67NM 161° FM end of RWY19.



CHANGE: New PROC.

STANDARD DEPARTURE CHART-INSTRUMENT

RJTL / SHIMOFUSA

SID

WEST FIVE DEPARTURE

RWY01 : Climb RWY HDG to 2000FT, turn left HDG 252° to intercept and proceed via SHT R297 to OMIYA.

RWY19 : Climb RWY HDG to SHT 2.5DME, turn left proceed to SHT TACAN, via SHT R297 to OMIYA.

Cross SHT TACAN at or above 2000FT.

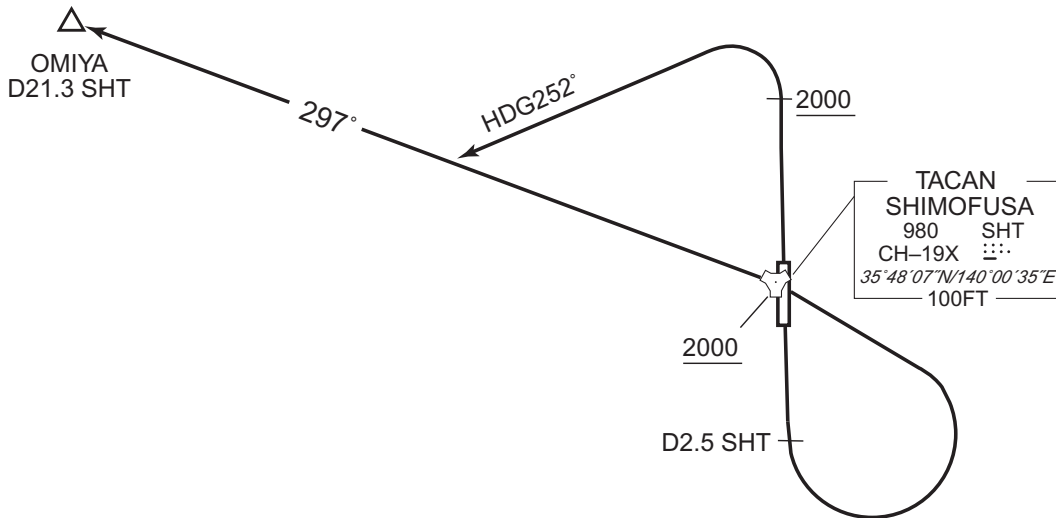
Note RWY01 : 5.0% climb gradient required up to 2000FT.

RWY19 : 5.0% climb gradient required up to 700FT.

OBST ALT 314FT located at 1.67NM 161° FM end of RWY19.

CHANGE: PROC renamed. DME FM RWY19(D2.4 SHT → D2.5 SHT). Note RWY19(OBST). SHT COORD.

WEST FIVE DEPARTURE



STANDARD DEPARTURE CHART-INSTRUMENT

RJTL / SHIMOFUSA

SID

TSUGA FOUR DEPARTURE

RWY01 : Climb RWY HDG to SHT 2.0DME, turn right HDG 200° ...

RWY19 : Climb RWY HDG to 600FT, turn left...

...to intercept and proceed via SHT R155 to TSUGA.

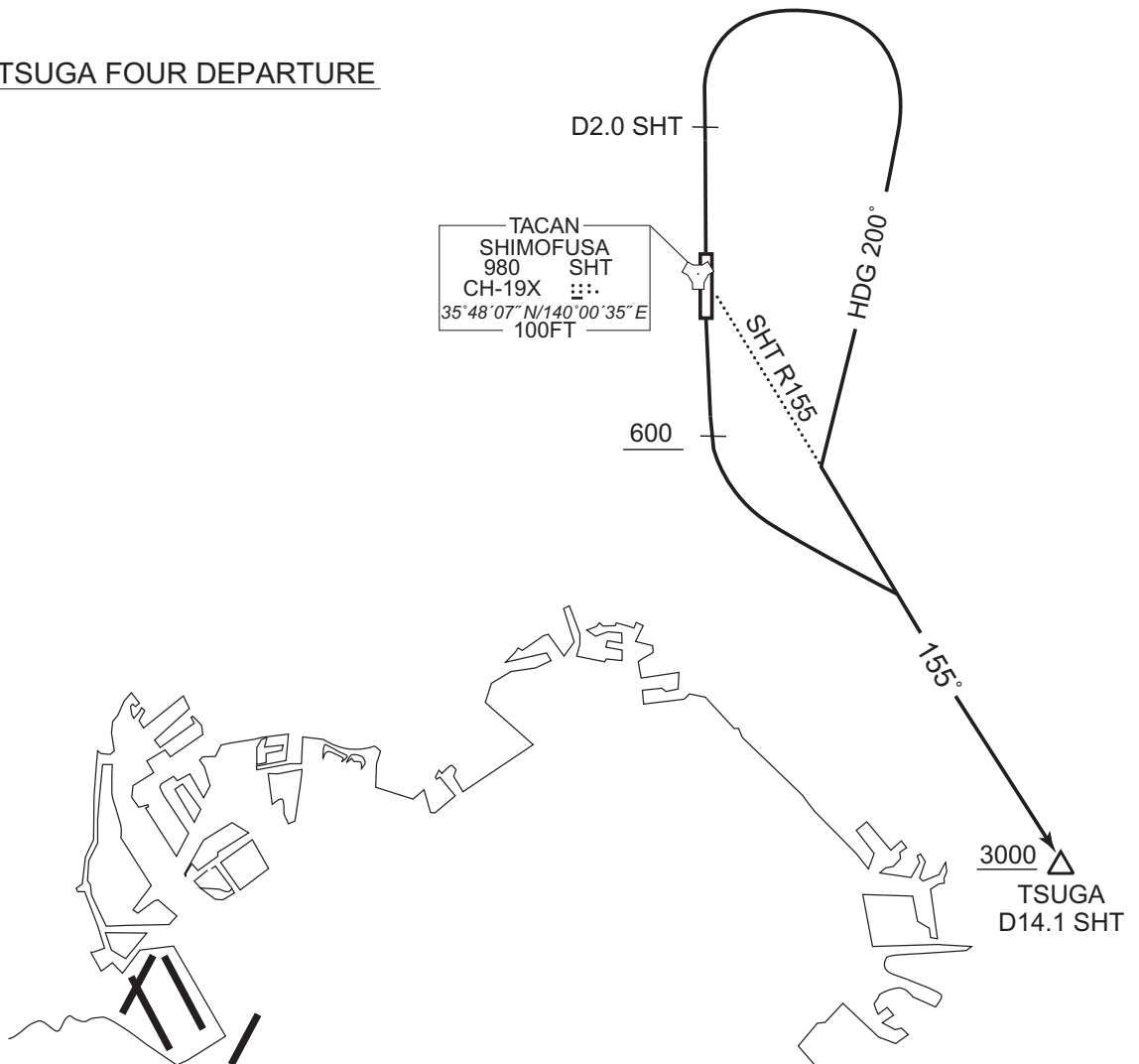
Cross TSUGA at or above 3000FT.

Note RWY01 : 5.0% climb gradient required up to 600FT.

OBST ALT 251FT located at 1.56NM 020° FM end of RWY01.

RWY19 : 5.0% climb gradient required up to 600FT.

TSUGA FOUR DEPARTURE



CHANGE: PROC renamed. SHT COORD.

STANDARD DEPARTURE CHART-INSTRUMENT

RJTL / SHIMOFUSA

SID

KOGAR TWO DEPARTURE

RWY01 : Climb RWY HDG to SHT 2.0DME, ...

RWY19 : Climb RWY HDG to SHT 2.5DME, turn left HDG 331° to intercept and proceed...
...via SHT R016 to 24.6DME, turn left, via SHT 24.6DME counterclockwise ARC
to KOGAR.

Cross SHT R016/23.5DME at or above 5000FT.

Note RWY01 : 5.0% climb gradient required up to 600FT.

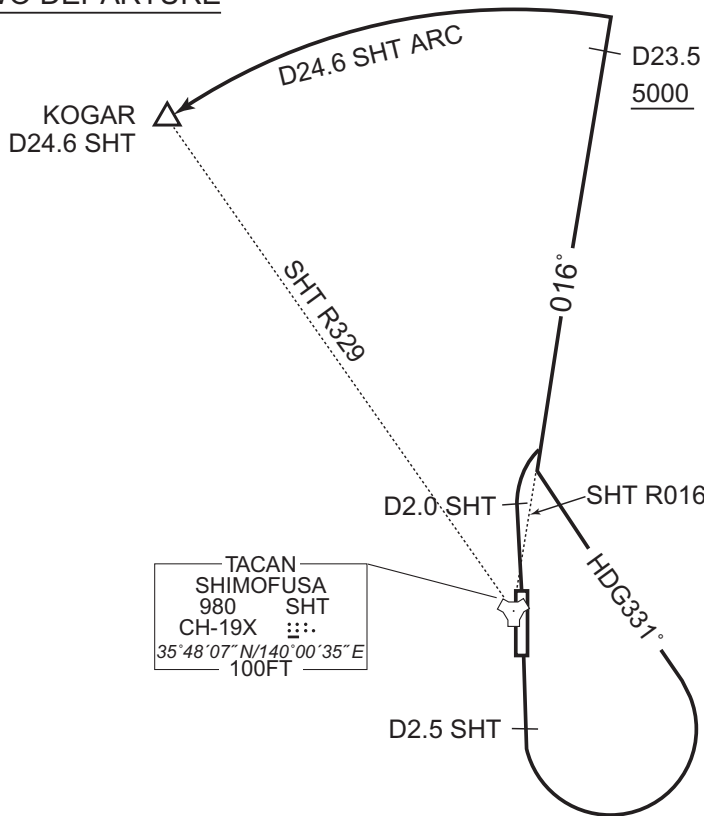
OBST ALT 251FT located at 1.56NM 020° FM end of RWY01.

RWY19 : 5.0% climb gradient required up to 700FT.

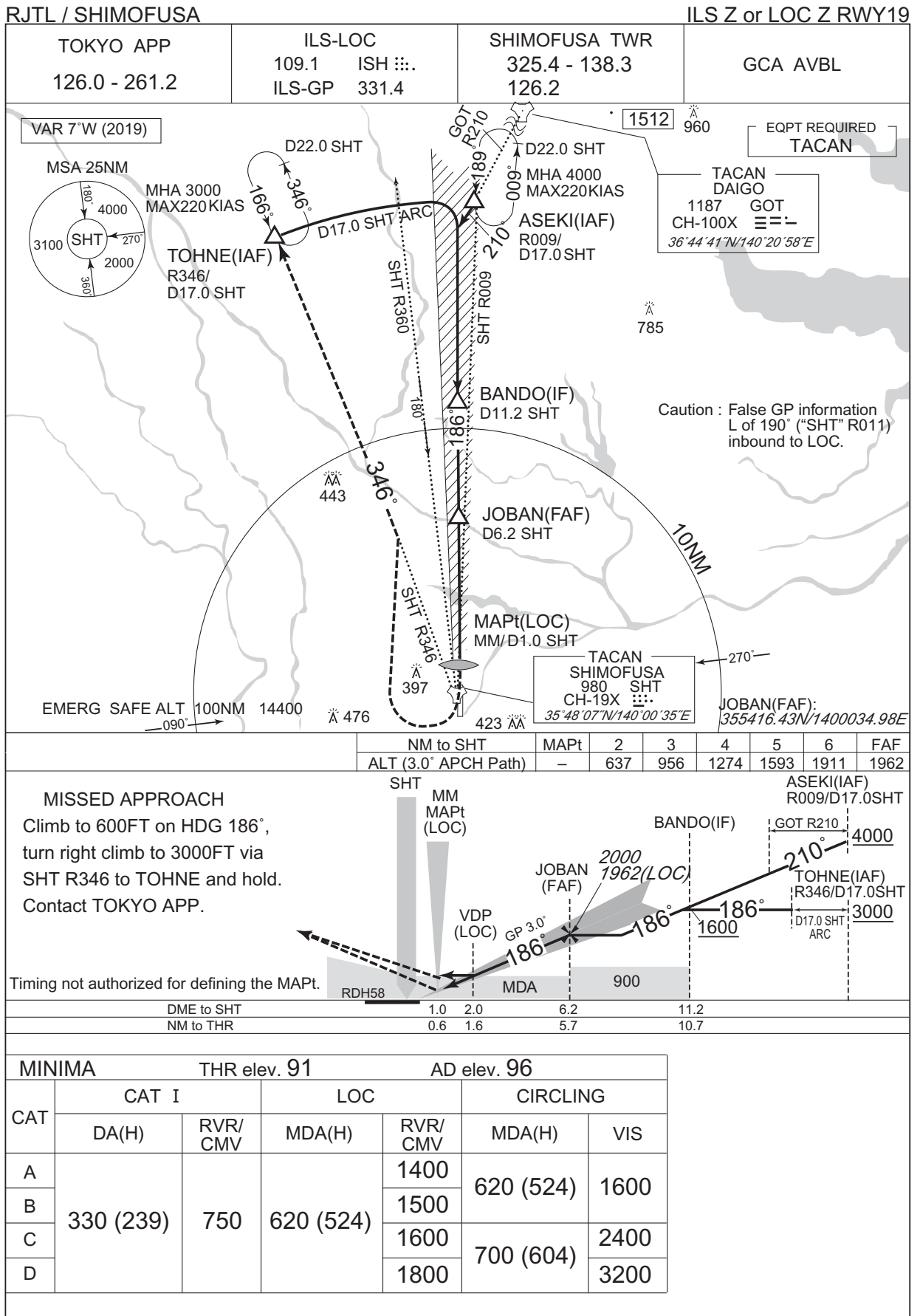
OBST ALT 314FT located at 1.67NM 161° FM end of RWY19.

CHANGE: PROC renamed. DME FM RWY19(D2.4 SHT → D2.5 SHT). Radial FM SHT(KOGAR). Note RWY19(OBST). SHT COORD.

KOGAR TWO DEPARTURE

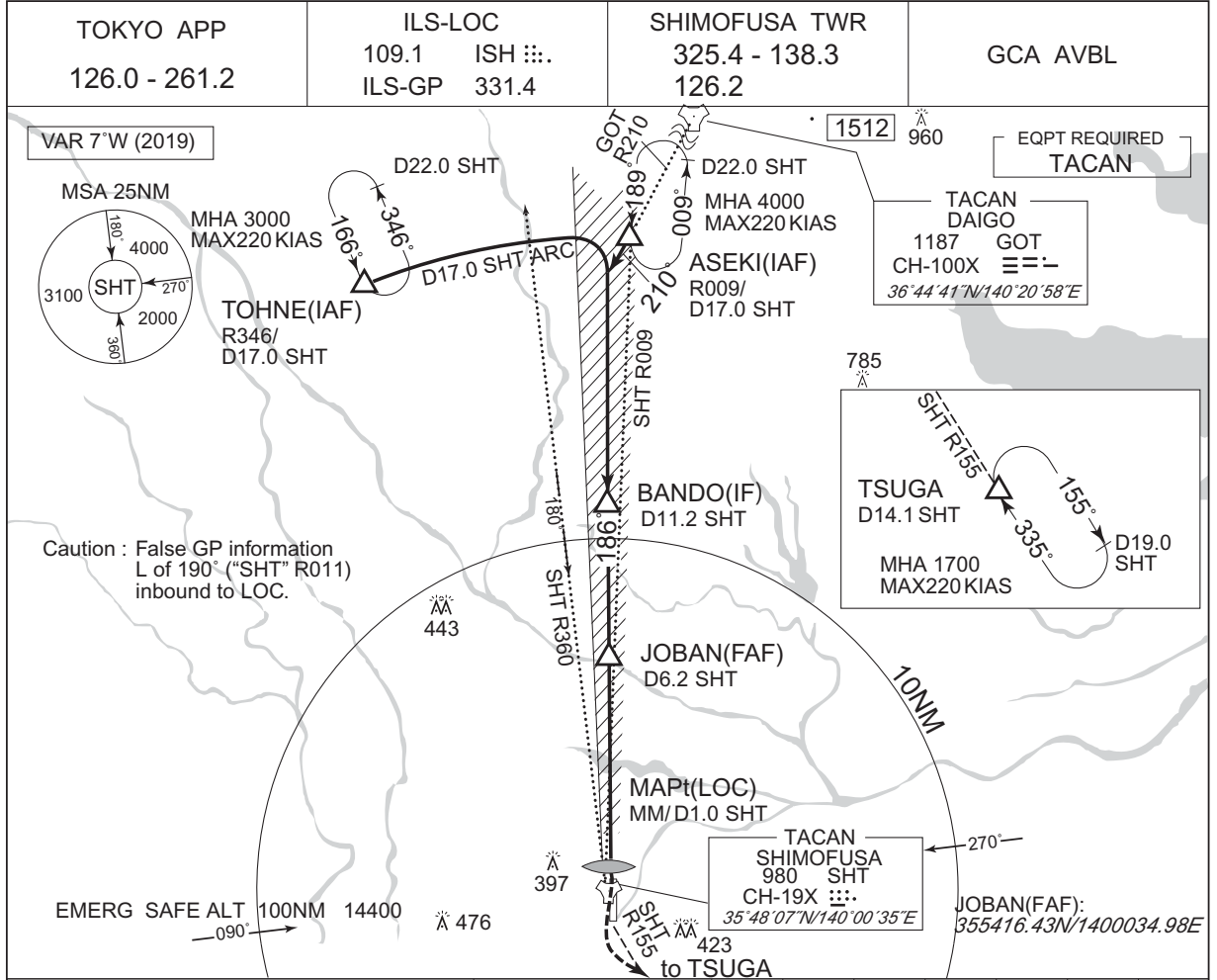


INSTRUMENT APPROACH CHART



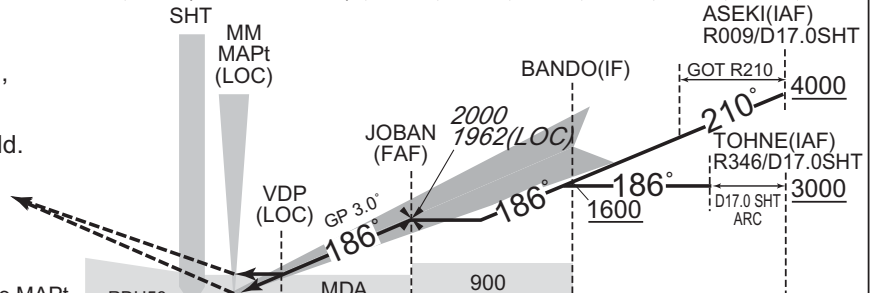
INSTRUMENT APPROACH CHART

RJTL / SHIMOFUSA ILS Y or LOC Y RWY19



	NM to SHT	MAPt	2	3	4	5	6	FAF
	ALT (3.0° APCH Path)	-	637	956	1274	1593	1911	1962

MISSED APPROACH
Climb to 600FT on HDG 186°, turn left climb to 1700FT via SHT R155 to TSUGA and hold. Contact TOKYO APP.

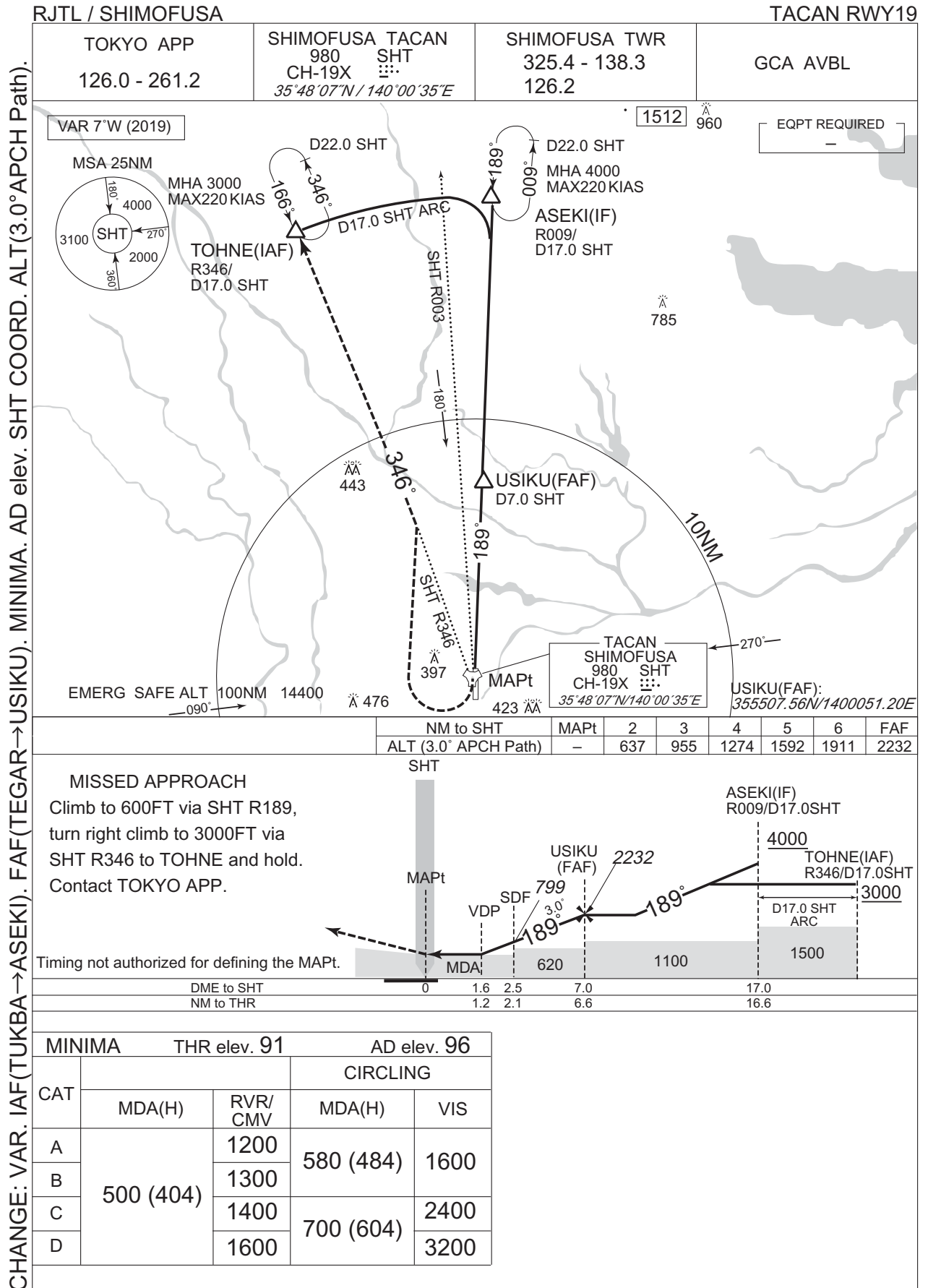


	DME to SHT	1.0	2.0	6.2	11.2
	NM to THR	0.6	1.6	5.7	10.7

MINIMA		THR elev. 91		AD elev. 96		
CAT	CAT I		LOC		CIRCLING	
	DA(H)	RVR/CMV	MDA(H)	RVR/CMV	MDA(H)	VIS
A	330 (239)	750	620 (524)	1400	620 (524)	1600
B				1500		
C				1600	700 (604)	2400
D				1800		

CHANGE: Course FM ASEKI to BANDO.

INSTRUMENT APPROACH CHART



INTENTIONALLY LEFT BLANK