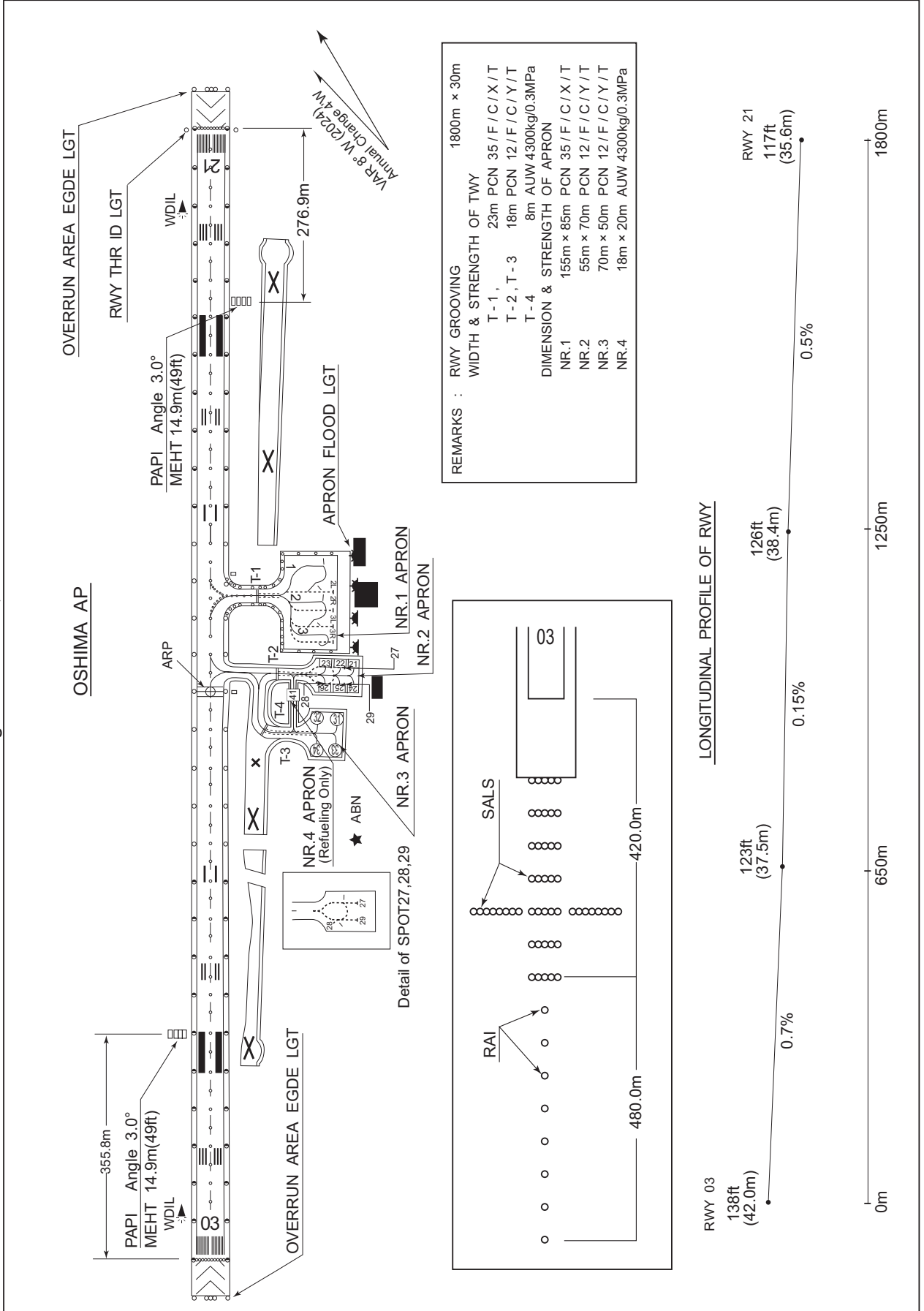


RJTO / OSHIMA

AD CHART

CHANGE : NR.4 APRON installed. RWY HLDG PSN marking for TWY T-2, T-3 relocated. TWY EDGE LGT for T-2 abolished. VAR.



STANDARD DEPARTURE CHART -INSTRUMENT

RJTO / OSHIMA

SID

HATSU FOUR DEPARTURE

RWY03 : Climb RWY HDG to 800FT, turn right, climb...

RWY21 : Climb RWY HDG to 1400FT, turn right, direct to OSE VOR/DME,...
 ...via OSE R037 to HATSU.

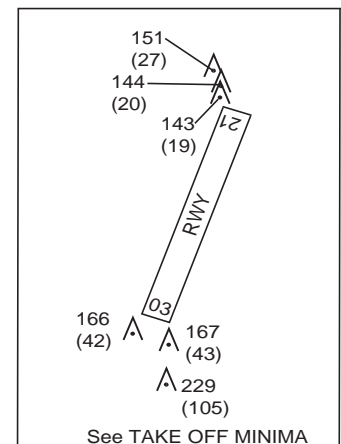
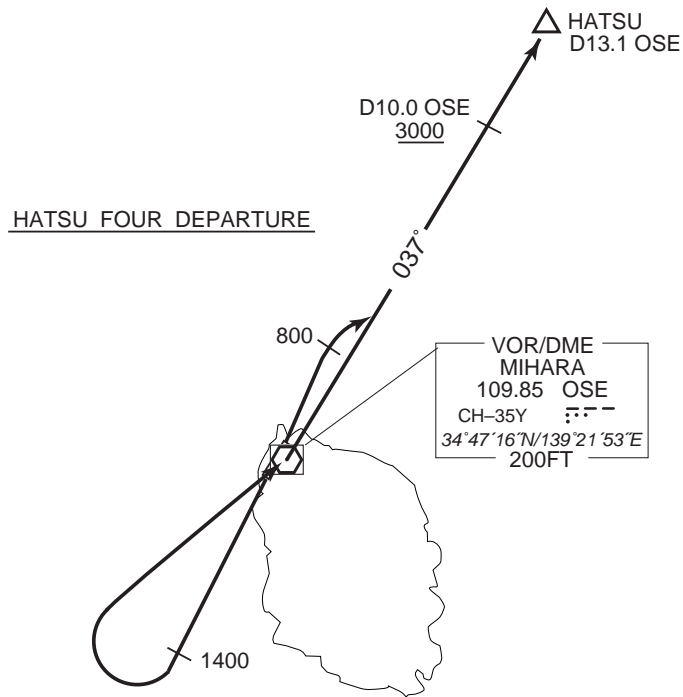
Cross OSE 10.0DME at or above 3000FT.

Note RWY03 : In case of climbing with 8.7% gradient up to 500FT, another TKOF
 WX MINIMA is applicable.

OBST ALT 394FT located at 0.6NM 049° FM end of RWY03.

Note RWY21 : 4.2% climb gradient required up to 1400FT.

OBST ALT 1444FT located at 2.2NM 165° FM end of RWY21



STANDARD DEPARTURE CHART -INSTRUMENT

RJTO / OSHIMA

SID

OSHIRA REVERSAL FOUR DEPARTURE

RWY03: Climb RWY HDG to 1100FT, turn left,...

RWY21: Climb RWY HDG to 1400FT, turn right,...

...direct to OSE VOR/DME.

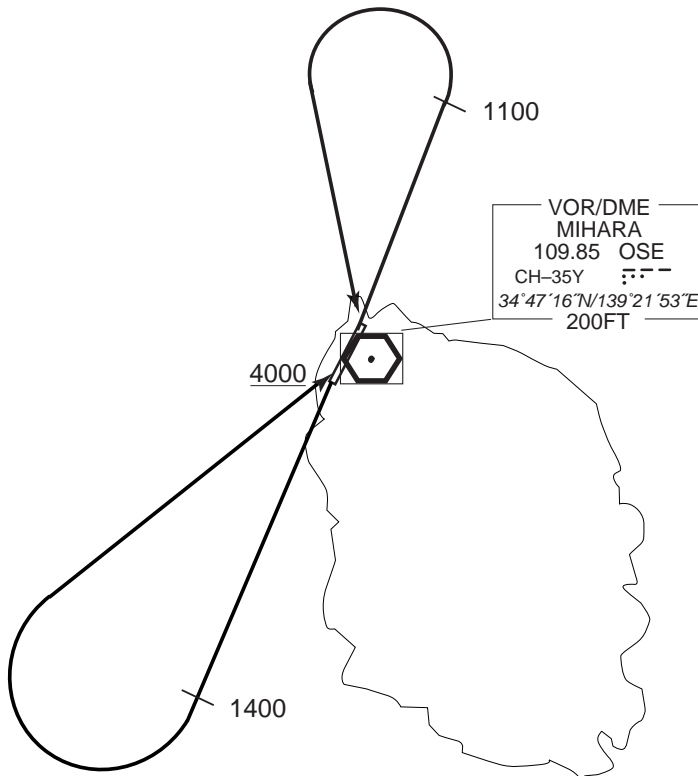
Cross OSE VOR/DME at or above 4000FT.

Note RWY03 : In case of climbing with 8.7% gradient up to 500FT, another TKOF
WX MINIMA is applicable.

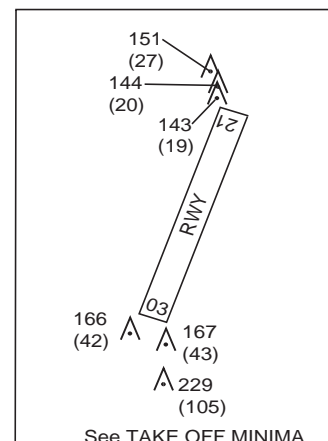
OBST ALT 394FT located at 0.6NM 049°FM end of RWY03.

Note RWY21 : 4.2% climb gradient required up to 1400FT.

OBST ALT 1444FT located at 2.2NM 165°FM end of RWY21



OSHIRA REVERSAL FOUR DEPARTURE

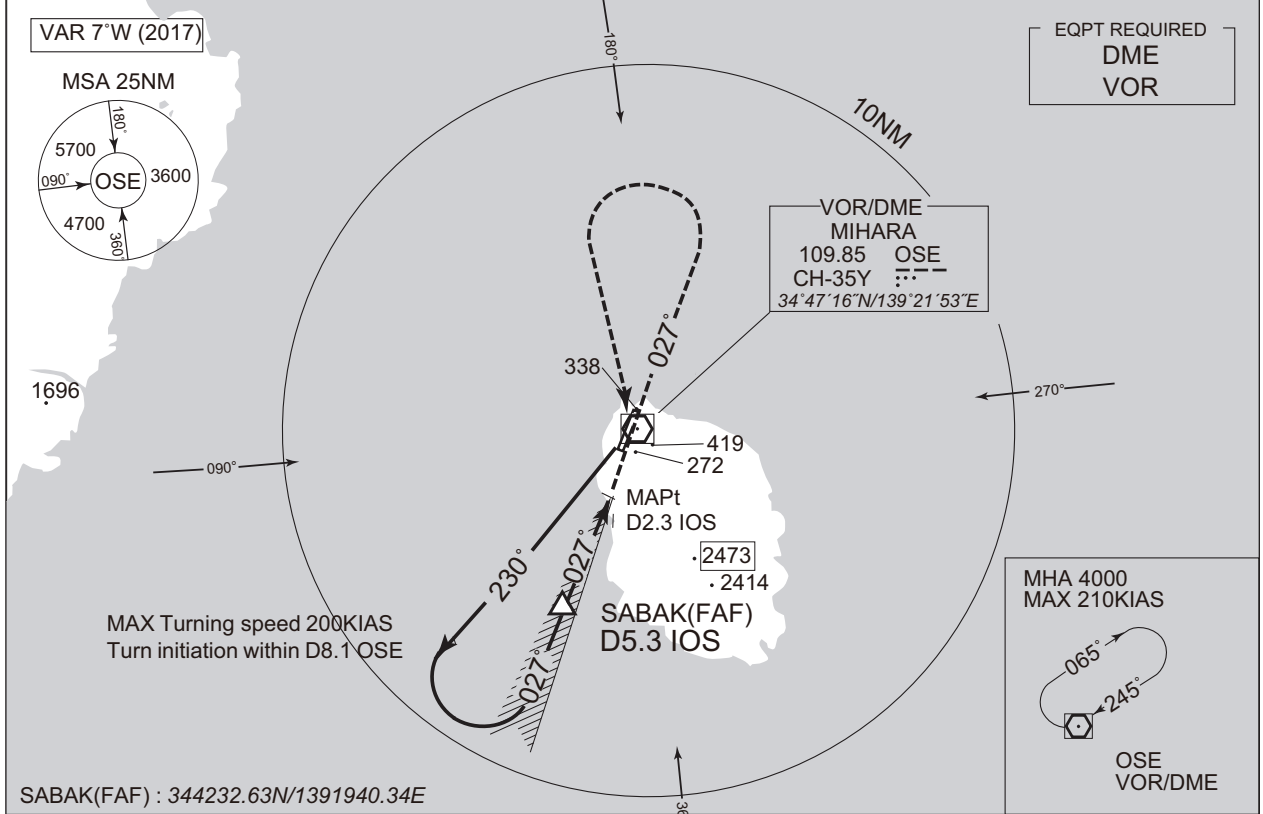


INSTRUMENT APPROACH CHART

RJTO / OSHIMA

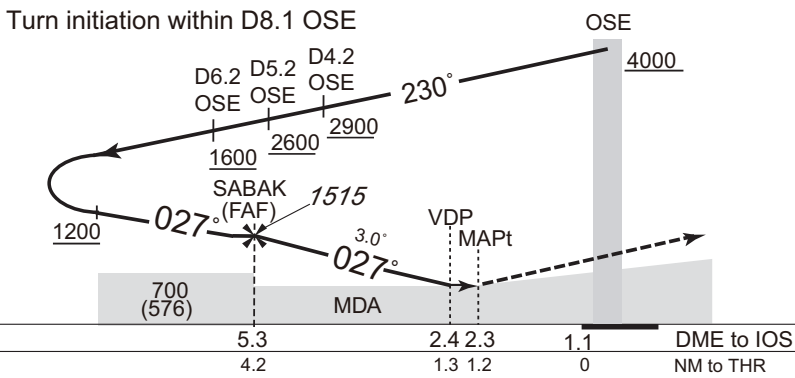
LOC RWY03

TOKYO RADAR 124.0 – 295.9 119.1 – 232.2	LOC 109.35 IOS $\ddot{--}--$ LOC-DME CH-30Y	OSHIMA RADIO 118.6 AFIS provided by New Chitose Airport Office.	NO RADAR
---	---	--	----------



SABAK(FAF) : 344232.63N/1391940.34E

NM to IOS	FAF	5	4	3	MAPt
ALT (3.0° APCH Path)	1515	1435	1117	798	-



MISSED APPROACH
 Climb to 1700FT on HDG027°,
 turn left, direct to OSE VOR/DME
 and hold at 4000FT.
 Contact OSHIMA RADIO.

Timing not authorized for defining the MAPt.

Missed APCH climb gradient MNM3.0%

MINIMA		THR elev. 138	AD elev. 124	
CAT	MDA(H)		CIRCLING	
	MDA(H)	CMV	MDA(H) VIS	
A	570 (446)	900	720 (596) 1600	
B		1000		2400
C		1400	730 (606)	
D				

MINIMA with Missed APCH climb gradient of 2.5% are not established.
 Circling to WEST side of RWY only.

CHANGE : Secondary FREQ of OSHIMA RADIO abolished. AFIS unit added.

INSTRUMENT APPROACH CHART

RJTO / OSHIMA

VOR A

TOKYO RADAR
124.0 – 295.9
119.1 – 232.2

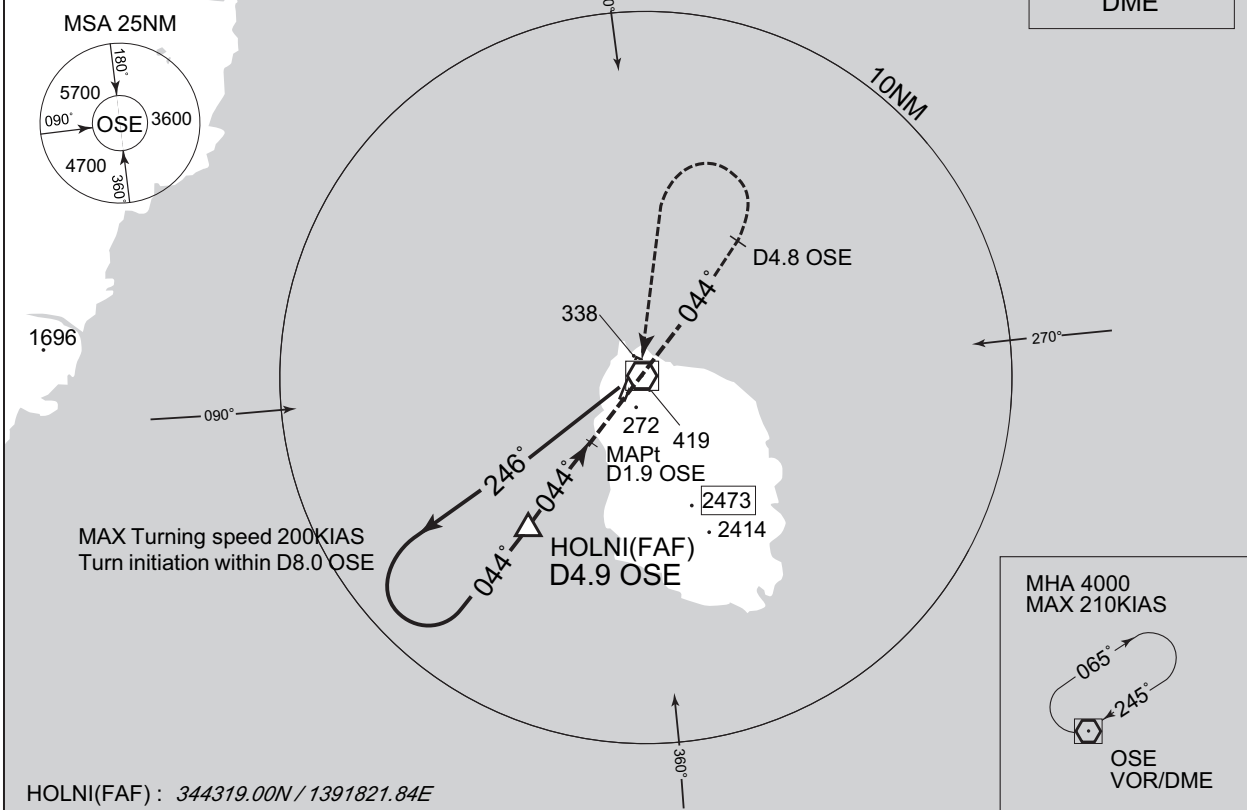
MIHARA VOR/DME
109.85 OSE
CH-35Y
34°47'16"N / 139°21'53"E

OSHIMA RADIO
118.6
AFIS provided by
New Chitose Airport Office.

NO RADAR

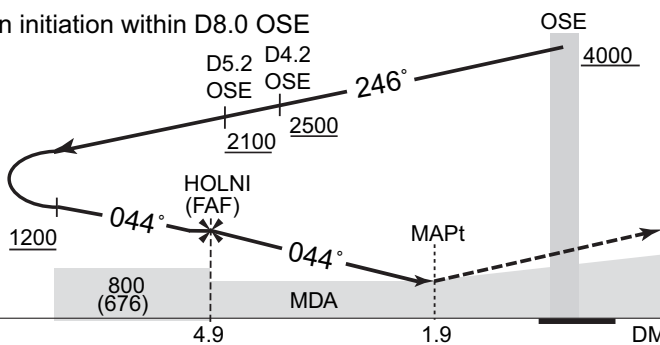
VAR 7°W (2017)

EQPT REQUIRED
DME



HOLNI(FAF) : 344319.00N / 1391821.84E

Turn initiation within D8.0 OSE



MISSED APPROACH

Climb via OSE R044 to OSE 4.8DME, turn left, direct to OSE VOR/DME and hold at 4000FT.
Contact OSHIMA RADIO.

Timing not authorized for defining the MAPt.

MINIMA		AD elev. 124
CAT	CIRCLING	
	MDA(H)	VIS
A	720 (596)	1600
B		2400
C		3200
D	730 (606)	

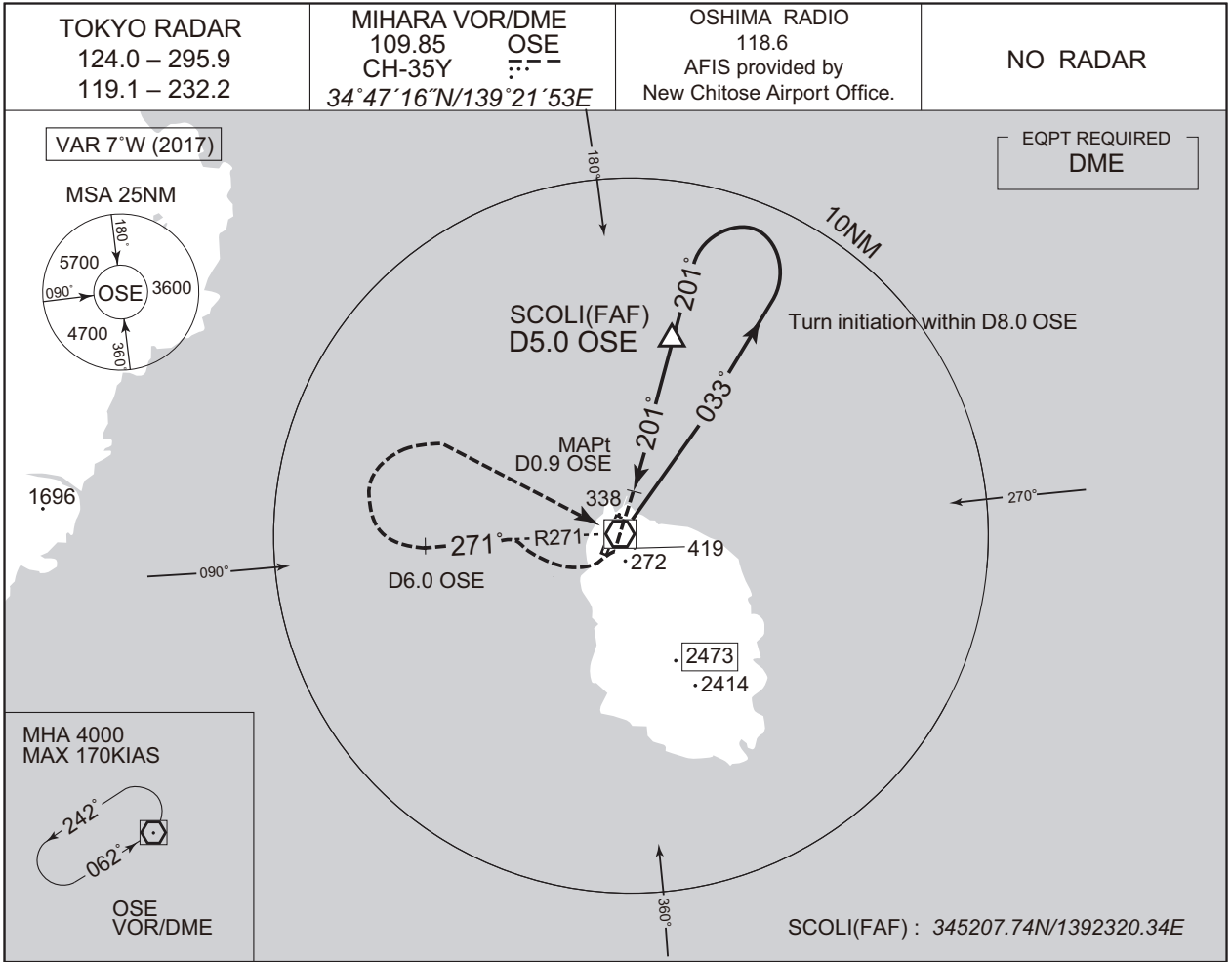
Circling to WEST side of RWY only.

CHANGE : Secondary FREQ of OSHIMA RADIO abolished. AFIS unit added.

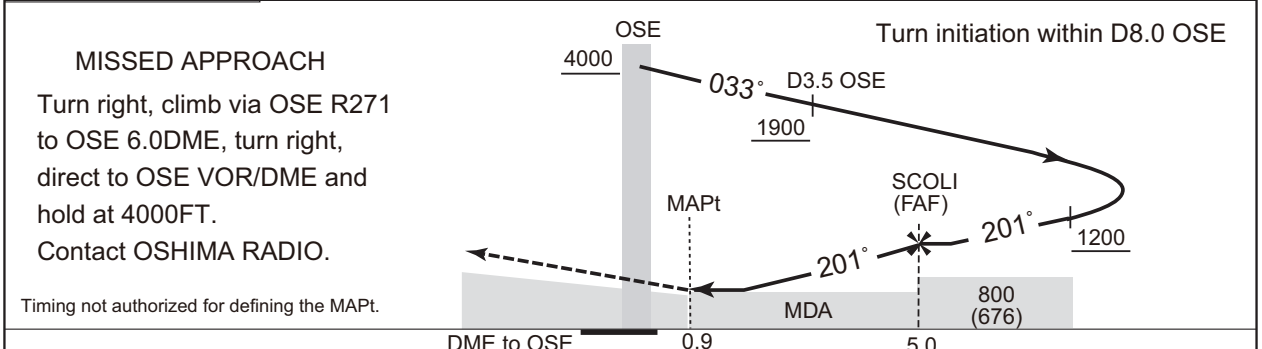
INSTRUMENT APPROACH CHART

RJTO / OSHIMA

VOR B



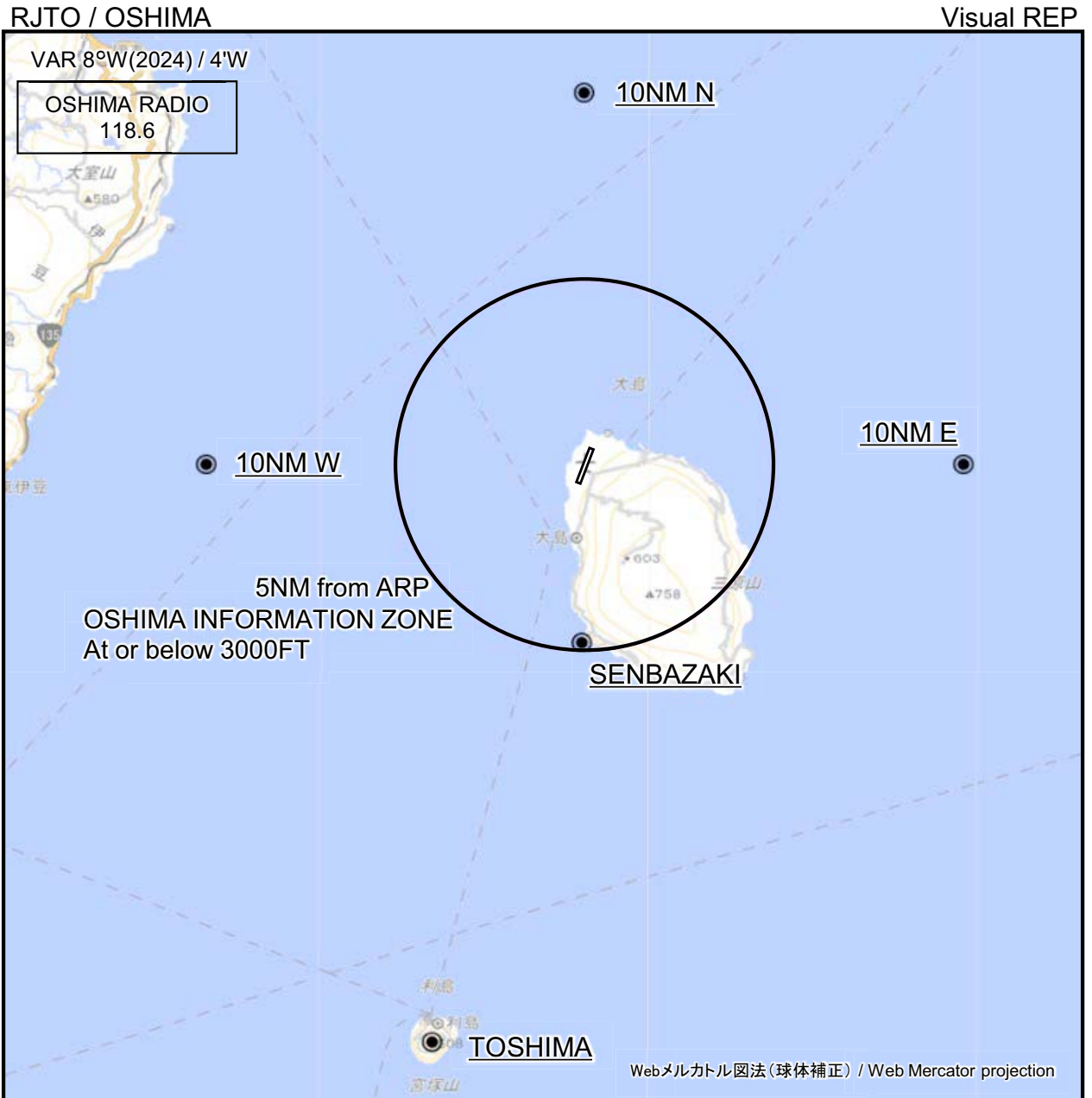
CHANGE : Secondary FREQ of OSHIMA RADIO abolished. AFIS unit added.



Missed APCH climb gradient MNM3.0%

MINIMA		AD elev. 124	
CAT	CIRCLING		VIS
	MDA(H)		
A	720 (596)		1600
B			
C	-		-
D	-		-

MINIMA with Missed APCH climb gradient of 2.5% are not established.
 Circling to WEST side of RWY only.



※図中に標高を示す数字がある場合、単位はメートル(m)である。The unit of measurement used to express elevation is meter(m).

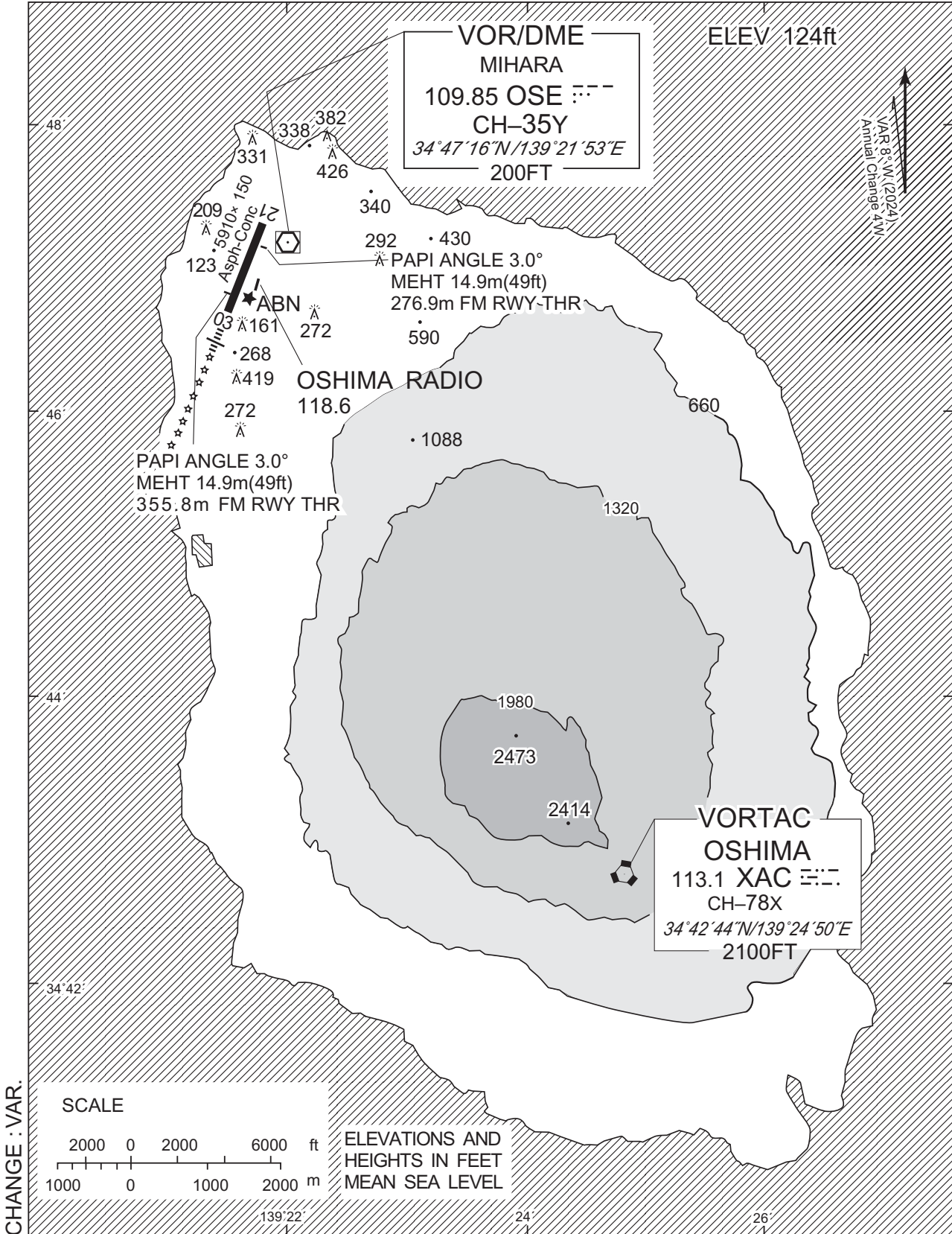
Call sign	BRG / DIST from ARP	Remarks
10NM N	360°T / 10.0NM	海上 Over the sea
10NM E	090°T / 10.0NM	海上 Over the sea
10NM W	270°T / 10.0NM	海上 Over the sea
千波崎 Senbazaki	181°T / 4.8NM	岬 Cape
利島 Toshima	194°T / 16.1NM	宮塚山 Mt. Miyatsuka

CHANGE : VAR.

NOTE: In the SE direction of the airport, A/G COM from Oshima Radio is blinded by Mt Mihara(2,487ft)

RJTO / OSHIMA

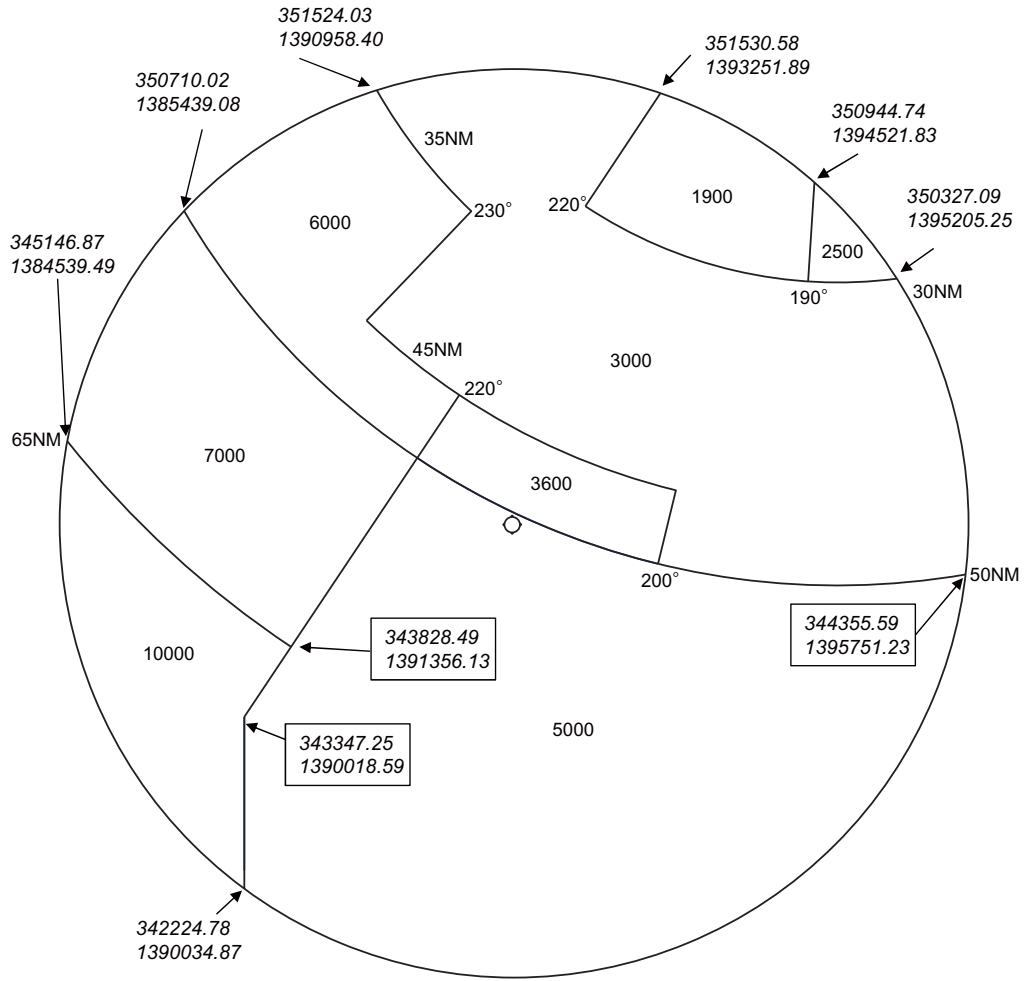
LDG CHART



RJTO / OSHIMA

Minimum Vectoring Altitude CHART

VAR 8°W (2019)



- CENTER : 344655N/1392137E (ARP)
- 344655N/1392137E RADIUS : 30NM
- RADIAL & DISTANCE FM 353312N/1394652E(TOKYO ARP)

CHANGE : VAR.