



**INTENTIONALLY LEFT BLANK**

STANDARD DEPARTURE CHART -INSTRUMENT

RJTQ / MIYAKEJIMA

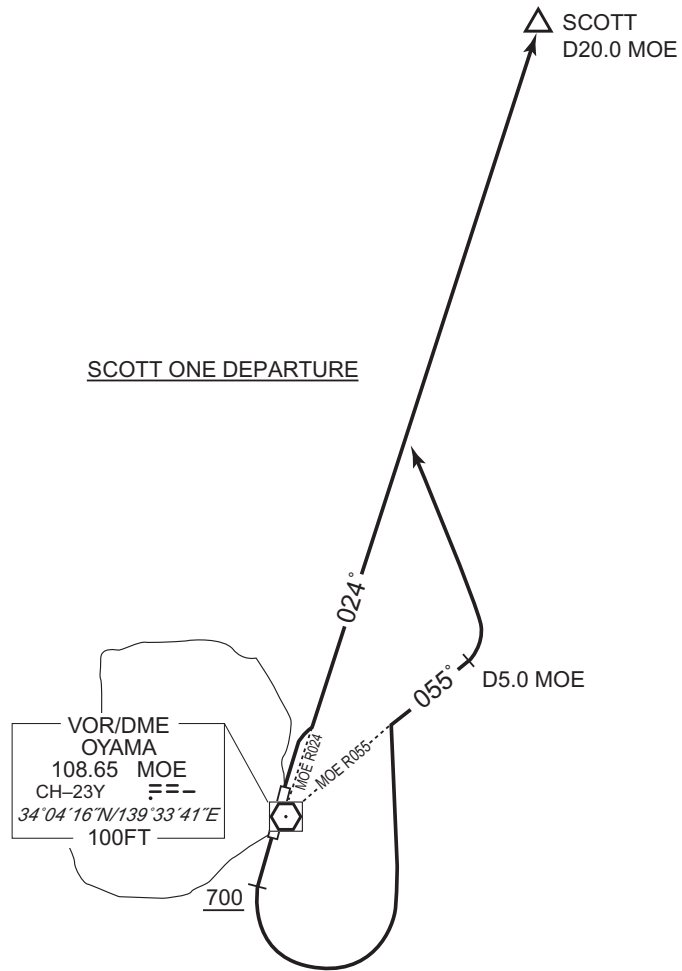
SID

SCOTT ONE DEPARTURE

RWY02 : Turn right,...

RWY20 : Climb RWY HDG to 700FT or above, turn left, via MOE R055 to 5.0DME,  
turn left,...

...climb via MOE R024 to SCOTT.



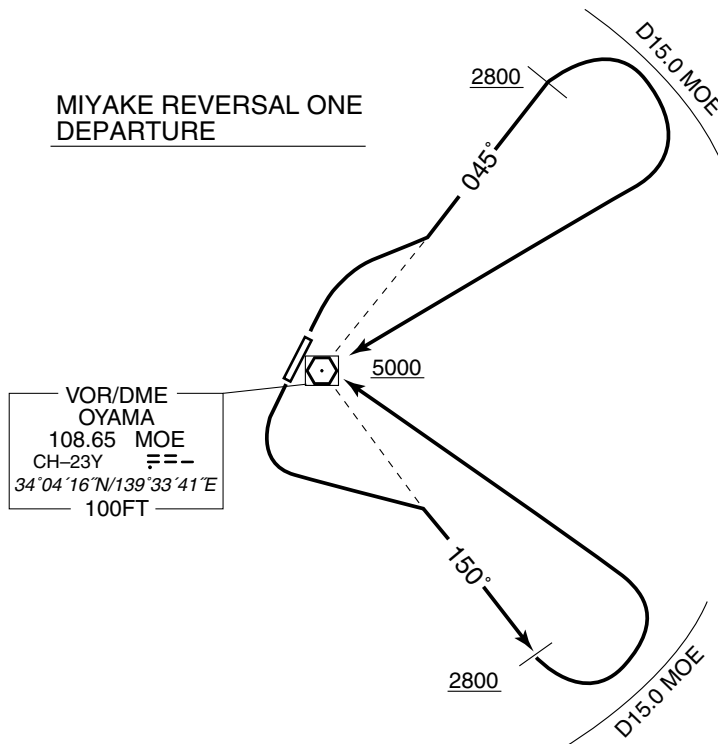
STANDARD DEPARTURE CHART -INSTRUMENT

RJTQ / MIYAKEJIMA

SID

MIYAKE REVERSAL ONE DEPARTURE

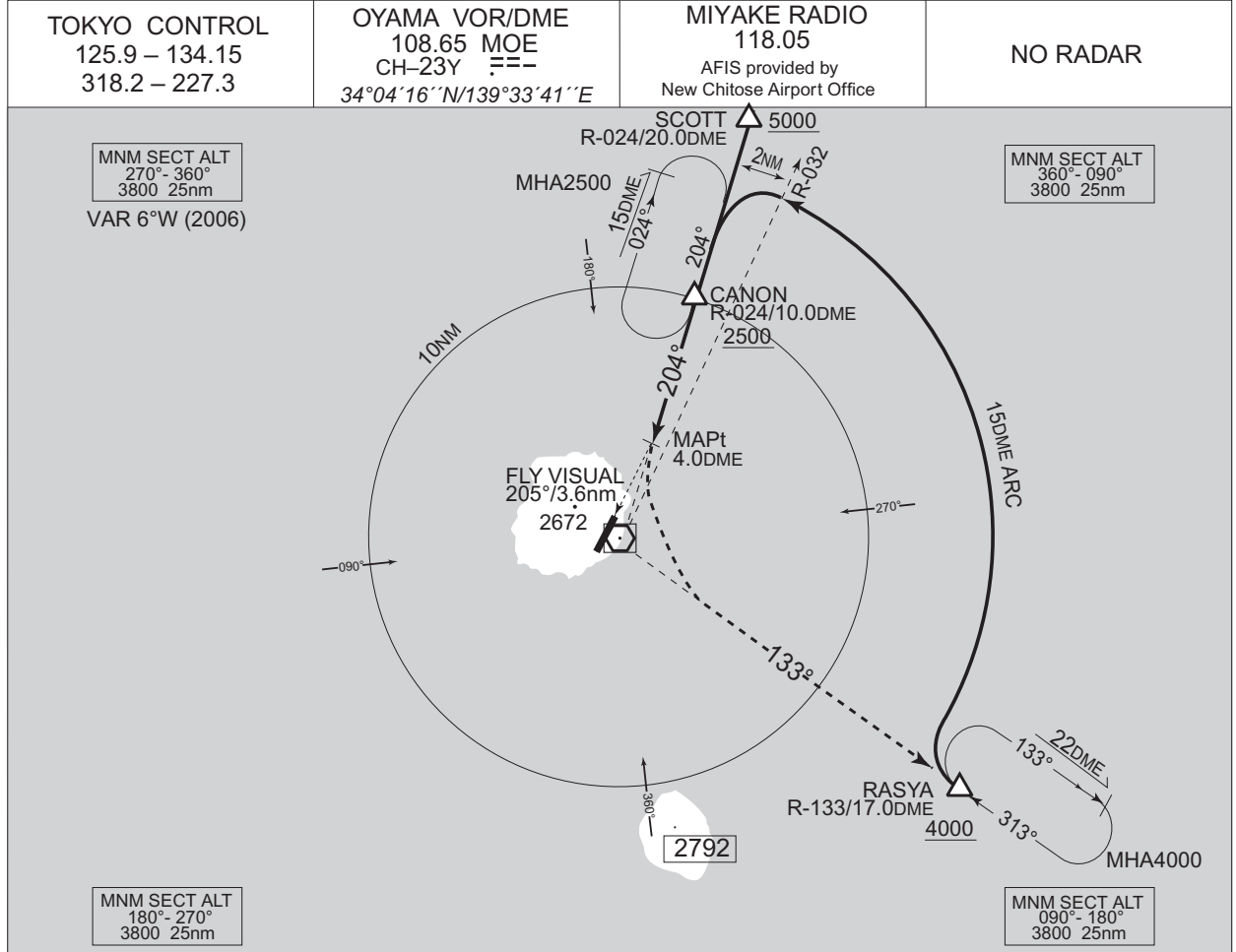
- RWY02 : Turn right climb via MOE R045 to 2800FT or above, turn right within MOE 15.0DME...
- RWY20 : Turn left climb via MOE R150 to 2800FT or above, turn left within MOE 15.0DME...  
...proceed to MOE VOR/DME.  
Cross MOE VOR/DME at or above 5000FT.



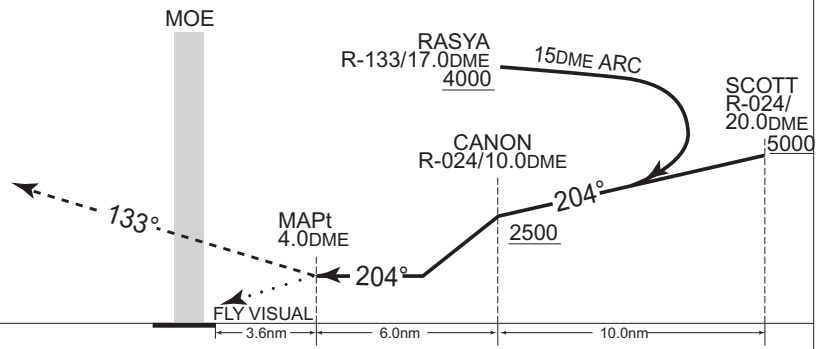
INSTRUMENT APPROACH CHART

RJTQ / MIYAKEJIMA

VOR/DME A



**MISSED APPROACH**  
 At 4.0DME prior to MOE VOR/DME,  
 turn left climb via MOE R-133  
 to RASYA and hold at 4,000ft.  
 Contact MIYAKE RADIO.



<b>MINIMA</b>		AD elev. 65
CAT	CIRCLING	
	MDA(H)	VIS
A	760 (695)	3200
B	-	-
C	-	-
D	-	-

CHANGE: AFIS unit.

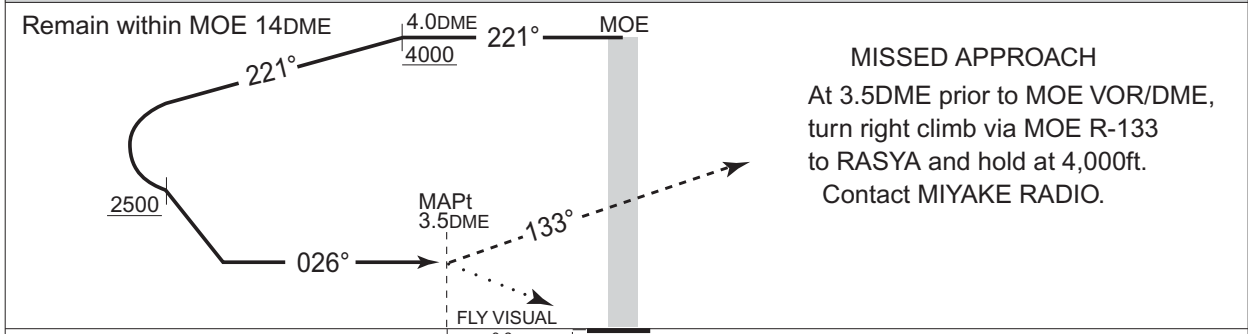
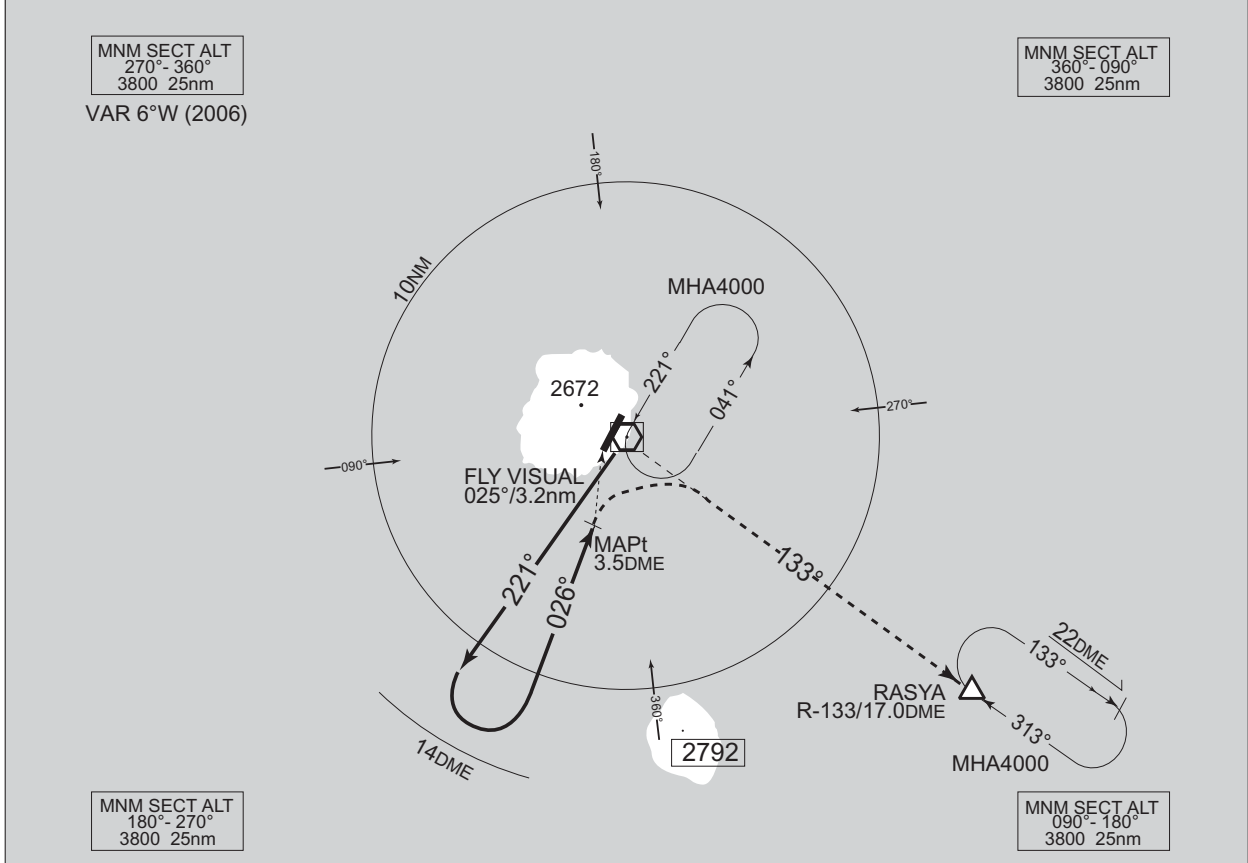
Circling to East side of RWY only.

INSTRUMENT APPROACH CHART

RJTQ / MIYAKEJIMA

VOR/DME B

TOKYO CONTROL 125.9 – 134.15 318.2 – 227.3	OYAMA VOR/DME 108.65 MOE CH-23Y 34°04'16"N/139°33'41"E	MIYAKE RADIO 118.05 AFIS provided by New Chitose Airport Office	NO RADAR
--	---	--	----------



MINIMA		AD elev. 65
CAT	CIRCLING	
	MDA(H)	VIS
A	760 (695)	3200
B		
C	-	-
D	-	-

CHANGE: AFIS unit.

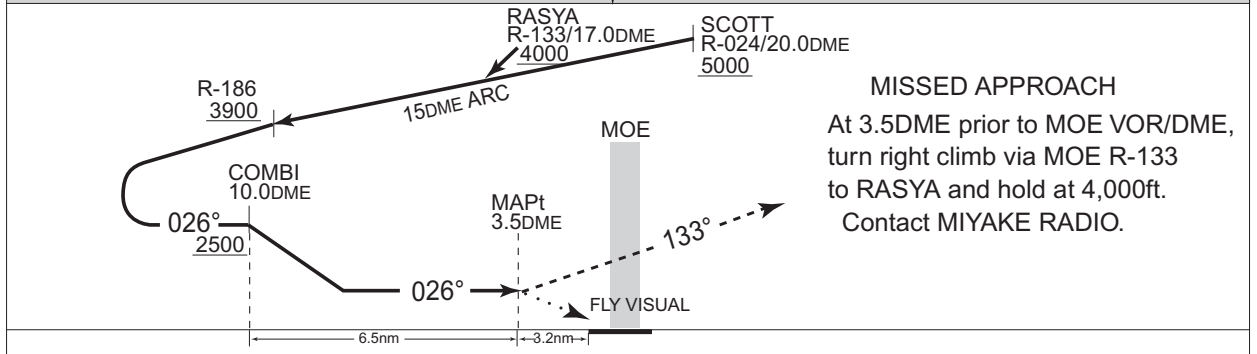
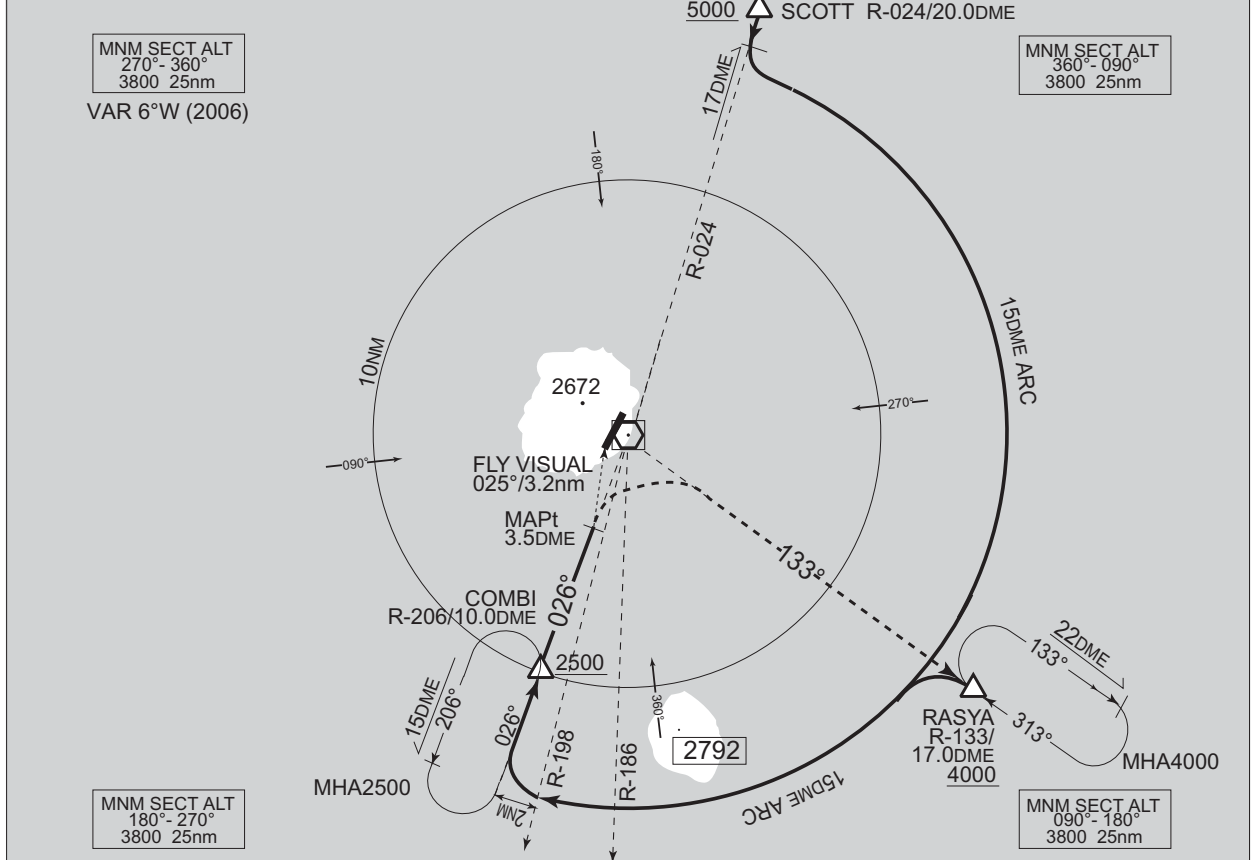
Circling to East side of RWY only.

INSTRUMENT APPROACH CHART

RJTQ / MIYAKEJIMA

VOR/DME C

TOKYO CONTROL 125.9 – 134.15 318.2 – 227.3	OYAMA VOR/DME 108.65 MOE CH-23Y 34°04'16"N/139°33'41"E	MIYAKE RADIO 118.05 AFIS provided by New Chitose Airport Office	NO RADAR
--	---	--	----------



MINIMA		AD elev. 65
CAT	CIRCLING	
	MDA(H)	VIS
A	760 (695)	3200
B		
C		
D		

CHANGE: AFIS unit.

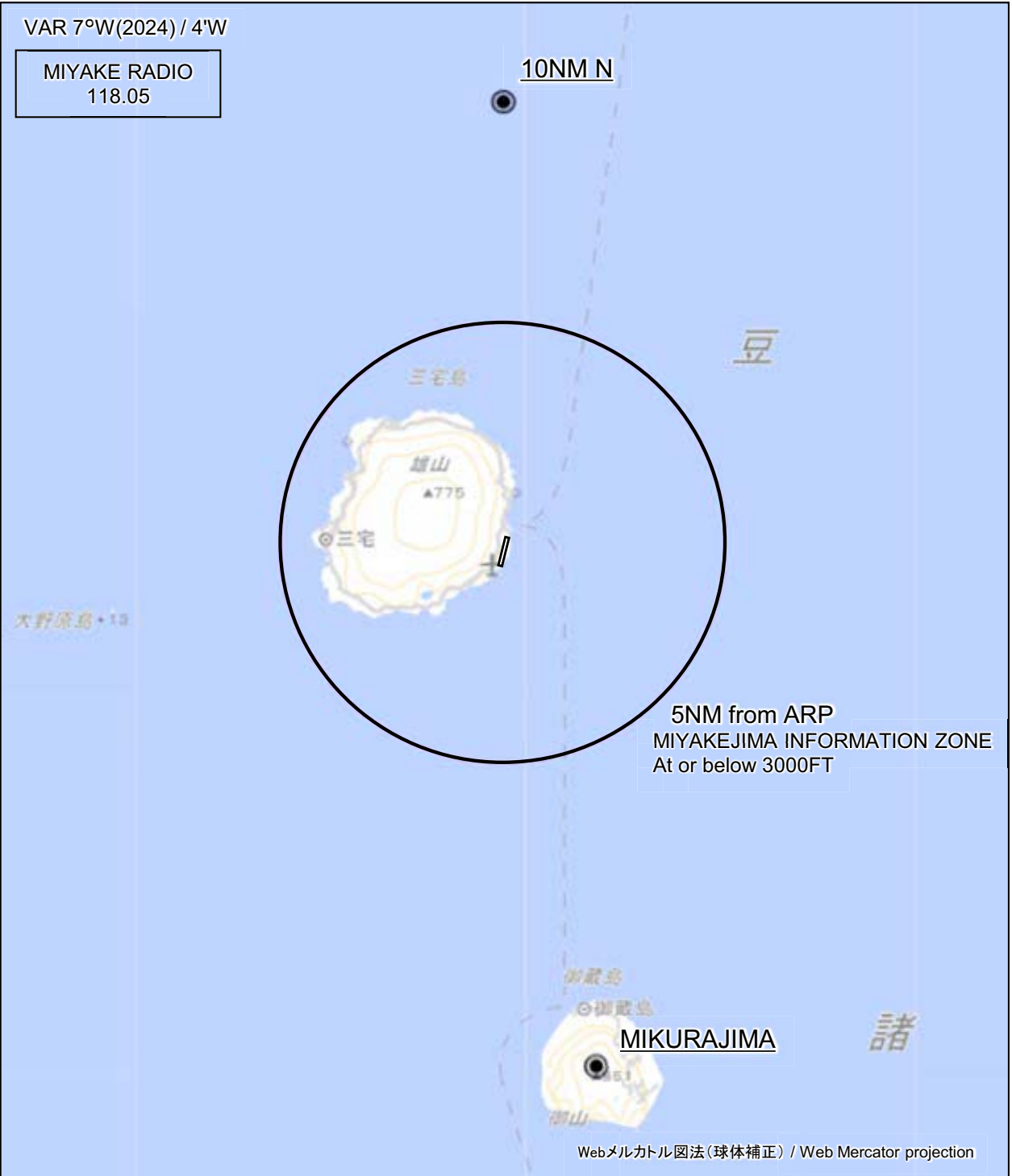
Circling to East side of RWY only.

**INTENTIONALLY LEFT BLANK**



RJTQ / MIYAKEIJIMA

Visual REP



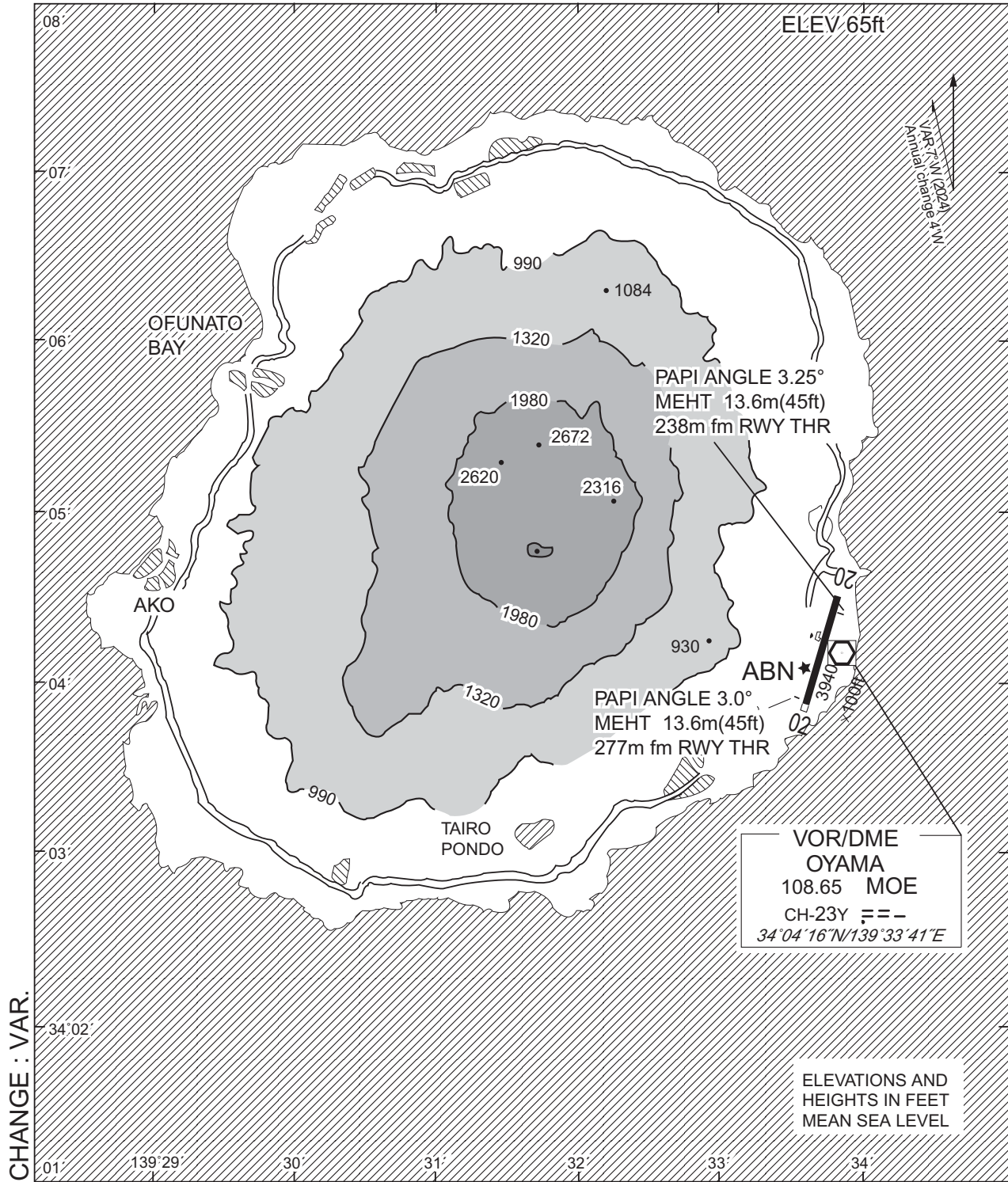
※図中に標高を示す数字がある場合、単位はメートル(m)である。The unit of measurement used to express elevation is meter(m).

CHANGE : VAR.	Call sign	BRG / DIST from ARP	Remarks
	10NM N	360°T / 10.0NM	海上 Over the sea
御蔵島 Mikurajima	170°T / 12.1NM	御山 Mt. Oyama	

Note : In the W direction of the airport, A/G COM from Miyake Radio is blinded by Mt. Oyama (2,543ft).

RJTQ / MIYAKEJIMA

LDG CHART



RJTQ / MIYAKEJIMA

Minimum Vectoring Altitude CHART

