

AD 2 AERODROMES

RJTQ AD 2.1 AERODROME LOCATION INDICATOR AND NAME

RJTQ - MIYAKEJIMA

RJTQ AD 2.2 AERODROME GEOGRAPHICAL AND ADMINISTRATIVE DATA

1	ARP coordinates and site at AD	340425N/1393337E 0.6km from RWY02 THR
2	Direction and distance from (city)	19.0km E from Miyake village office
3	Elevation/ Reference temperature	65ft / -
4	Geoid undulation at AD ELEV PSN	135ft
5	MAG VAR/ Annual change	7°W(2024) / 4'W
6	AD Administration, address, telephone, telefax, telex, AFS, e-mail and/or Web-site addresses	Tokyo Metropolitan Government. Puplic AP. 1378, Tsubota, Miyake-mura, Miyake-jima, Tokyo. TEL : 04994-6-0203 FAX : 04994-6-1506
7	Types of traffic permitted (IFR/VFR)	IFR/VFR
8	Remarks	Nil

RJTQ AD 2.3 OPERATIONAL HOURS

1	AD Administration	0000 - 0815 [0000 21st APR - 0815 10th MAY, 0000 16th JUL - 0815 31st AUG] 0000 - 0800 [0000 11th MAY - 0800 15th JUL, 0000 1st SEP - 0800 20th APR]
2	Customs and immigration	On request Customs: 03-3599-6286 Immigration: 0570-034259 (Department Number 210)
3	Health and sanitation	Quarantine(human): On request(03-3599-1515) Quarantine(animal, plant): Nil
4	AIS Briefing Office	Nil
5	ATS Reporting Office(ARO)	Nil
6	MET Briefing Office	H24 (TOKYO)
7	ATS	0000 - 0815 [0000 21st APR - 0815 10th MAY, 0000 16th JUL - 0815 31st AUG] 0000 - 0800 [0000 11th MAY - 0800 15th JUL, 0000 1st SEP - 0800 20th APR] Remarks: AFIS provided by New Chitose Airport Office.
8	Fuelling	0000 - 0815 [0000 21st APR - 0815 10th MAY, 0000 16th JUL - 0815 31st AUG] 0000 - 0800 [0000 11th MAY - 0800 15th JUL, 0000 1st SEP - 0800 20th APR]
9	Handling	0000 - 0815 [0000 21st APR - 0815 10th MAY, 0000 16th JUL - 0815 31st AUG] 0000 - 0800 [0000 11th MAY - 0800 15th JUL, 0000 1st SEP - 0800 20th APR]
10	Security	0000 - 0815 [0000 21st APR - 0815 10th MAY, 0000 16th JUL - 0815 31st AUG] 0000 - 0800 [0000 11th MAY - 0800 15th JUL, 0000 1st SEP - 0800 20th APR]
11	De-icing	Nil
12	Remarks	Nil

RJTQ AD 2.4 HANDLING SERVICES AND FACILITIES

1	Cargo-handling facilities	Nil
2	Fuel/ oil types	Fuel: JET A-1
3	Fuelling facilities/ capacity	Fuel truck
4	De-icing facilities	Nil
5	Hangar space for visiting aircraft	Nil
6	Repair facilities for visiting aircraft	Nil
7	Remarks	Nil

RJTQ AD 2.5 PASSENGER FACILITIES

1	Hotels	Nil
2	Restaurants	Nil
3	Transportation	Nil
4	Medical facilities	Nil
5	Bank and Post Office	Nil
6	Tourist Office	Nil
7	Remarks	Nil

RJTQ AD 2.6 RESCUE AND FIRE FIGHTING SERVICES

1	AD category for fire fighting	CAT 3
2	Rescue equipment	Chemical Fire Fighting Truck x 1
3	Capability for removal of disabled aircraft	Nil
4	Remarks	Nil

RJTQ AD 2.7 SEASONAL AVAILABILITY-CLEARING

1	Types of clearing equipment	Not Applicable
2	Clearance priorities	Nil
3	Remarks	Nil

RJTQ AD 2.8 APRONS, TAXIWAYS AND CHECK LOCATIONS DATA

1	Apron surface and strength	North APRON Surface: Asphalt Concrete, Strength: PCN 12/F/C/Y/T South APRON Surface: Asphalt Concrete, Strength: PCN 8/F/A/Y/T
2	Taxiway width, surface and strength	WIDTH : 18m Surface:Asphalt Concrete Strength:PCN 12/F/C/Y/T
3	ACL and elevation	Not Available
4	VOR checkpoints	Not Available
5	INS checkpoints	(Spot NR) 1: 340423.50N,1393331.75E 2: 340424.12N,1393331.97E
6	Remarks	Nil

RJTQ AD 2.9 SURFACE MOVEMENT GUIDANCE AND CONTROL SYSTEM AND MARKINGS

1	Use of aircraft stand ID signs, TWY guide lines and Visual docking/ parking guidance system of aircraft stands	Nil
2	RWY and TWY markings and LGT	RWY:(RWY02/20) (Marking):RWY designation, RWY CL, RWY THR, RWY middle point, Aiming point, TDZ, RWY side stripe (LGT):REDL, RTHL, RENL, RWY DIST marker LGT TWY: (Marking):TWY CL, TWY side stripe (LGT):TWY edge LGT
3	Stop bars	Nil
4	Remarks	(Marking) : Overrun area (LGT) : Apron flood LGT

RJTQ AD 2.10 AERODROME OBSTACLES

- In Area2 See Obstacle data
- In Area3 To be developed

RJTQ AD 2.11 METEOROLOGICAL INFORMATION PROVIDED

1	Associated MET Office	TOKYO
2	Hours of service MET Office outside hours	H24(TOKYO)
3	Office responsible for TAF preparation Periods of validity	Nil
4	Trend forecast Interval of issuance	Nil
5	Briefing/ consultation provided	Briefing is available upon inquiry at TOKYO
6	Flight documentation Language(s) used	C En
7	Charts and other information available for briefing or consultation	S ₆ , U ₈₅ , U ₇ , U ₅ , U ₃ , U ₂₅ , U ₂ /T _r , P _S , P ₅ , P ₃ , P ₂₅ , P _{SWE} , P _{SWF} , P _{SWG} , P _{SWI} , P _{SWM} , P _{SW} (domestic), E, C, W _E , W _F , W _G , W _I , W, N
8	Supplementary equipment available for providing information	Nil
9	ATS units provided with information	RADIO
10	Additional information(limitation of service, etc.)	Nil

RJTQ AD 2.12 RUNWAY PHYSICAL CHARACTERISTICS

Designations RWY NR	TRUE BRG	Dimensions of RWY(M)	Strength(PCN) and surface of RWY	THR coordinates THR geoid undulation	THR elevation and highest elevation of TDZ of precision APP RWY
1	2	3	4	5	6
02	016.88°	1200x30	PCN 12/F/C/Y/T	340400.96N 1393328.61E	THR ELEV: 67FT
20	196.88°	1200x30	Asphalt Concrete	340438.23N 1393342.20E	THR ELEV: 61FT
Slope of RWY		Strip Dimensions(M)	RESA(Overrun) Dimensions(M)	Remarks	
7		10	11	14	
To be developed		1320x120 1320x120	39x60 8x60	RWY grooving: 1200m x 20m	

RJTQ AD 2.13 DECLARED DISTANCES

RWY Designator	TORA (m)	TODA (m)	ASDA (m)	LDA (m)	Remarks
1	2	3	4	5	6
02	1200	1200	1200	1200	Nil
20	1200	1200	1200	1200	Nil

RJTQ AD 2.14 APPROACH AND RUNWAY LIGHTING

RWY Designator	APCH LGT		PAPI (VASIS)		RCLL	REDL	RENL	STWL
	type	RTHL	DIST FM	THR	RTZL	Color		
INTST	Color	WBAR	MEHT	LEN	INTST	INTST	WBAR	Color
1	2	3	4	5	6	7	8	9
02		Green	PAPI 3.0° /LEFT 277m 45FT			1200m 60m Coded Color (White/yellow) LIH	Red	Nil(*1)
20		Green	PAPI 3.25° /LEFT 238m 45FT			1200m 60M Coded Color (White/yellow) LIH	Red	Nil(*1)
Remarks								
10								
Overrun area edge LGT(Color:Red)(*1) RWY THR ID LGT for RWY 02/20 THR(Color:White)								

RJTQ AD 2.15 OTHER LIGHTING, SECONDARY POWER SUPPLY

1	ABN/IBN location, characteristics and hours of operation	ABN: 340426N/1393330E, White/Green EV4.3sec, HO
2	LDI location and LGT Anemometer location and LGT	LDI:Nil Anemometer: RWY02:77m FM RWY02 THR, LGTD RWY20:75m FM RWY20 THR, LGTD
3	TWY edge and centerline lighting	TWY edge LGT: Blue TWY CL LGT: Nil
4	Secondary power supply / switch-over time	Within 15sec : All lights
5	Remarks	WDI LGT

RJTQ AD 2.16 HELICOPTER LANDING AREA

Nil

RJTQ AD 2.17 ATS AIRSPACE

Designation and lateral limits		Vertical limits (ft)	Airspace classification	ATS unit call sign Language	Remarks
1		2	3	4	6
Miyakejima Information zone	Area within a radius of 5nm(9km) of Miyakejima ARP	3,000 or below	E	Miyake Radio En	

RJTQ AD 2.18 ATS COMMUNICATION FACILITIES

Service designation	Call sign	Frequency	Hours of operation	Remarks
1	2	3	4	5
AFIS	Miyake Radio	118.05MHz	0000 - 0815 [0000 21st APR - 0815 10th MAY, 0000 16th JUL - 0815 31st AUG] 0000 - 0800 [0000 11th MAY - 0800 15th JUL, 0000 1st SEP - 0800 20th APR]	Operated by New Chitose Airport Office

RJTQ AD 2.19 RADIO NAVIGATION AND LANDING AIDS

Type of aid (VOR declina- tion)	ID	Frequency	Hours of operation	Position of transmitting antenna coordinates	Elevation of DME transmitting antenna	Remarks
1	2	3	4	5	6	7
VOR (6°W/2009)	MOE	108.65MHz	H24	340415.75N/ 1393340.64E		VOR/DME Unusable: 240°-350° beyond 4NM below 5000ft.
DME	MOE	1110MHz (CH-23Y)	H24	340415.75N/ 1393340.64E	63.3ft	

RJTQ AD 2.20 LOCAL TRAFFIC REGULATIONS

1. Airport regulations

AD administration taxi into and out of south apron available at daytime.

2. Taxiing to and from stands

Nil

3. Parking area for small aircraft(General aviation)

Nil

4. Parking area for helicopters

Nil

5. Apron - taxiing during winter conditions

Nil

6. Taxiing - limitations

Nil

7. School and training flights - technical test flights - use of runways

In principle, no flight training is permitted.
To apply for an exception, the administrator's prior permission is required.



8. Helicopter traffic - limitation

Nil

9. Removal of disabled aircraft from runways

Nil

RJTQ AD 2.21 NOISE ABATEMENT PROCEDURES

Nil

RJTQ AD 2.22 FLIGHT PROCEDURES

TAKE OFF MINIMA		
	RWY	CEIL-VIS
TKOF ALTN AP FILED	02	300'-2400m
	20	300'-1600m
OTHER	02	AVBL LDG MINIMA
	20	

NOTE: SIDs are designed in accordance with provisional standards for FLIGHT PROCEDURE DESIGN.

RJTQ AD 2.23 ADDITIONAL INFORMATION

Nil

RJTQ AD 2.24 CHARTS RELATED TO AN AERODROME

Aerodrome/Heliport Chart
 Standard Departure Chart - Instrument (SCOTT)
 Standard Departure Chart - Instrument (MIYAKE REVERSAL)
 Instrument Approach Chart (VOR/DME A)
 Instrument Approach Chart (VOR/DME B)
 Instrument Approach Chart (VOR/DME C)
 Other Chart (Visual REP)
 Other Chart (LDG CHART)
 Other Chart (MVA CHART)

NOTE: SIDs and IAPs are designed in accordance with provisional standards for FLIGHT PROCEDURE DESIGN.

INTENTIONALLY LEFT BLANK

STANDARD DEPARTURE CHART -INSTRUMENT

RJTQ / MIYAKEJIMA

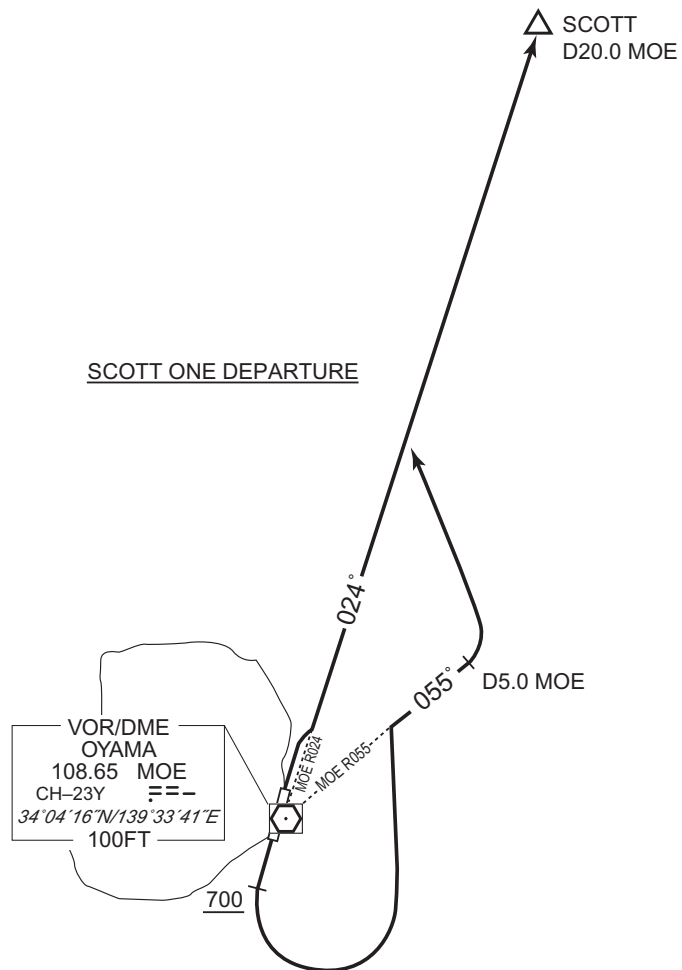
SID

SCOTT ONE DEPARTURE

RWY02 : Turn right,...

RWY20 : Climb RWY HDG to 700FT or above, turn left, via MOE R055 to 5.0DME,
turn left,...

...climb via MOE R024 to SCOTT.



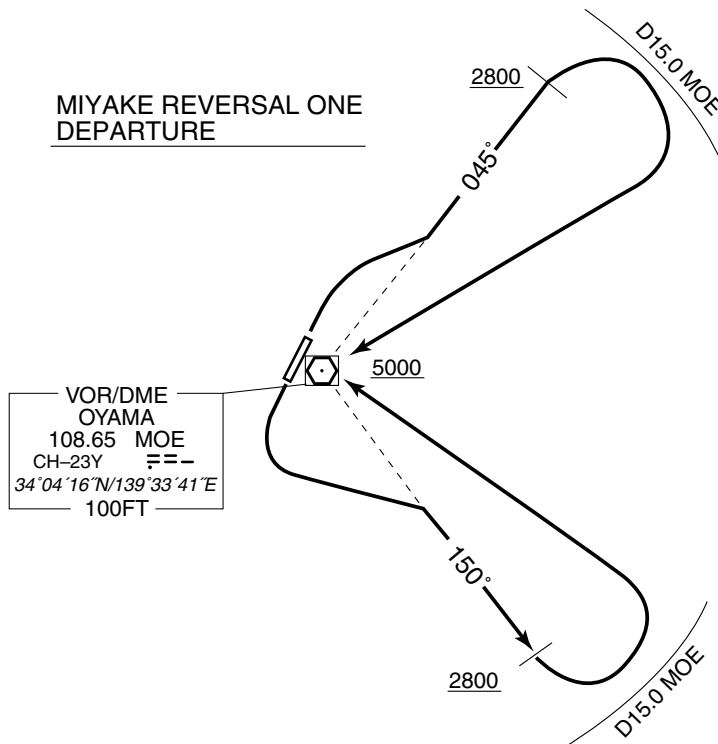
STANDARD DEPARTURE CHART -INSTRUMENT

RJTQ / MIYAKEJIMA

SID

MIYAKE REVERSAL ONE DEPARTURE

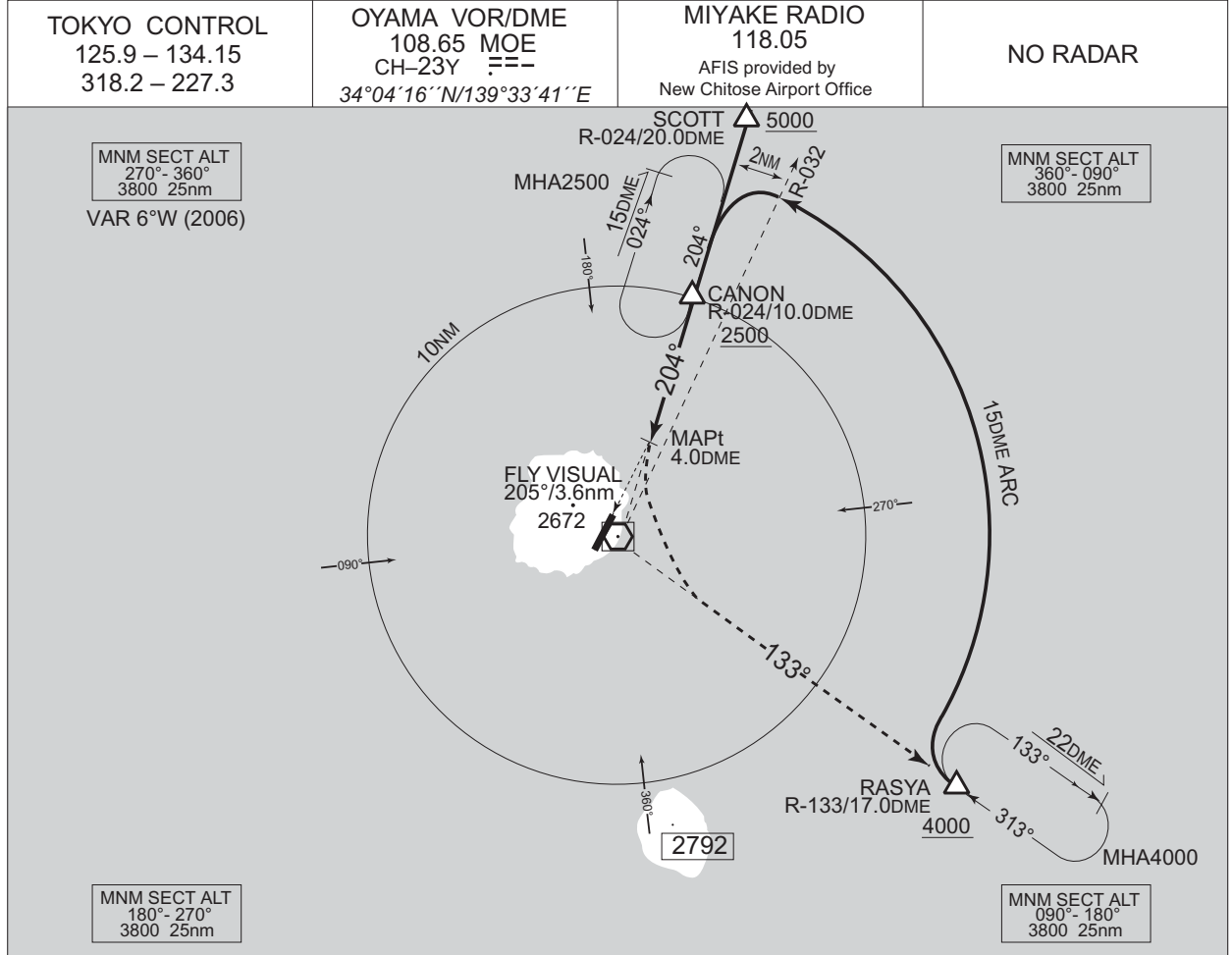
- RWY02 : Turn right climb via MOE R045 to 2800FT or above, turn right within MOE 15.0DME...
- RWY20 : Turn left climb via MOE R150 to 2800FT or above, turn left within MOE 15.0DME...
...proceed to MOE VOR/DME.
Cross MOE VOR/DME at or above 5000FT.



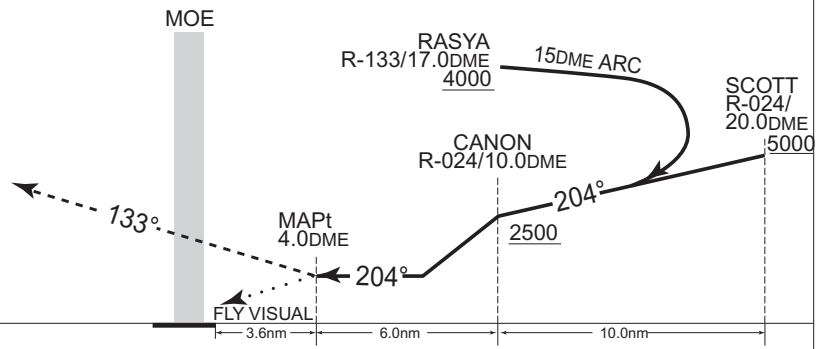
INSTRUMENT APPROACH CHART

RJTQ / MIYAKEJIMA

VOR/DME A



MISSED APPROACH
 At 4.0DME prior to MOE VOR/DME,
 turn left climb via MOE R-133
 to RASYA and hold at 4,000ft.
 Contact MIYAKE RADIO.



MINIMA		AD elev. 65
CAT	CIRCLING	
	MDA(H)	VIS
A	760 (695)	3200
B	-	-
C	-	-
D	-	-

CHANGE: AFIS unit.

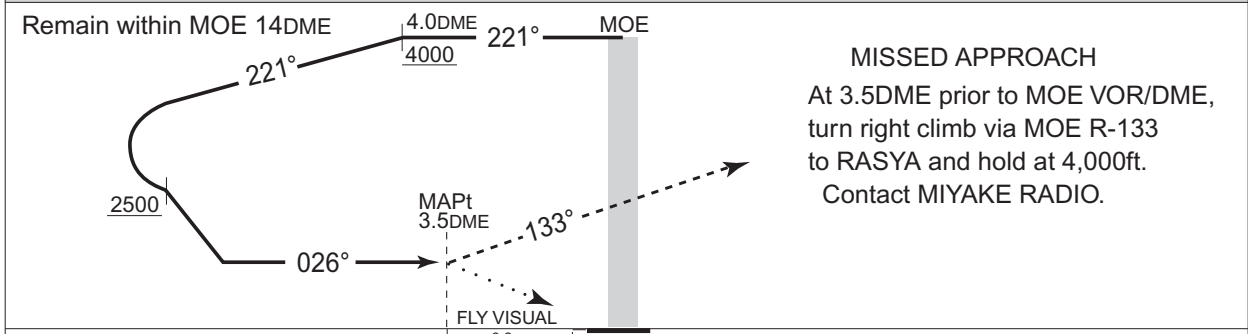
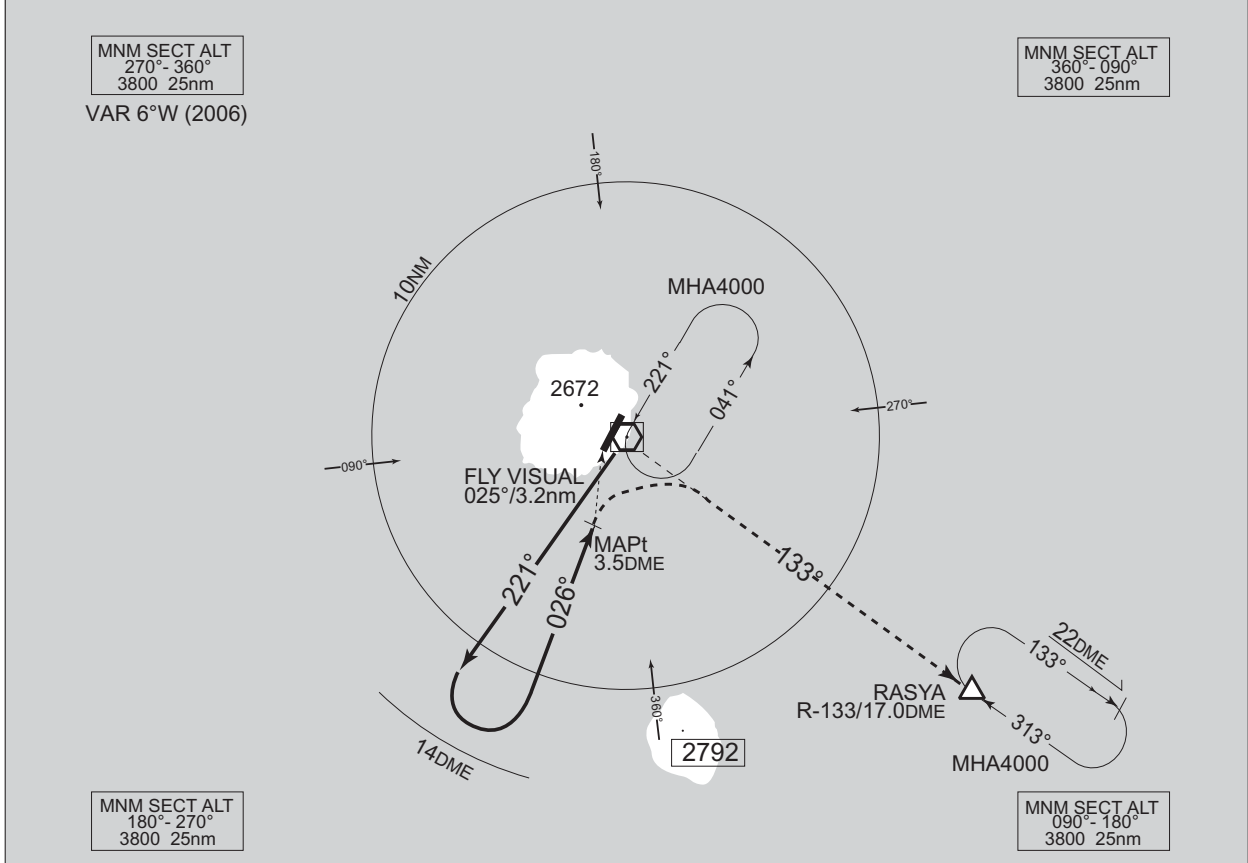
Circling to East side of RWY only.

INSTRUMENT APPROACH CHART

RJTQ / MIYAKEJIMA

VOR/DME B

TOKYO CONTROL 125.9 – 134.15 318.2 – 227.3	OYAMA VOR/DME 108.65 MOE CH-23Y 34°04'16"N/139°33'41"E	MIYAKE RADIO 118.05 AFIS provided by New Chitose Airport Office	NO RADAR
--	---	--	----------



MISSED APPROACH
At 3.5DME prior to MOE VOR/DME, turn right climb via MOE R-133 to RASYA and hold at 4,000ft. Contact MIYAKE RADIO.

MINIMA		AD elev. 65
CAT	CIRCLING	
	MDA(H)	VIS
A	760 (695)	3200
B		
C	-	-
D	-	-

CHANGE: AFIS unit.

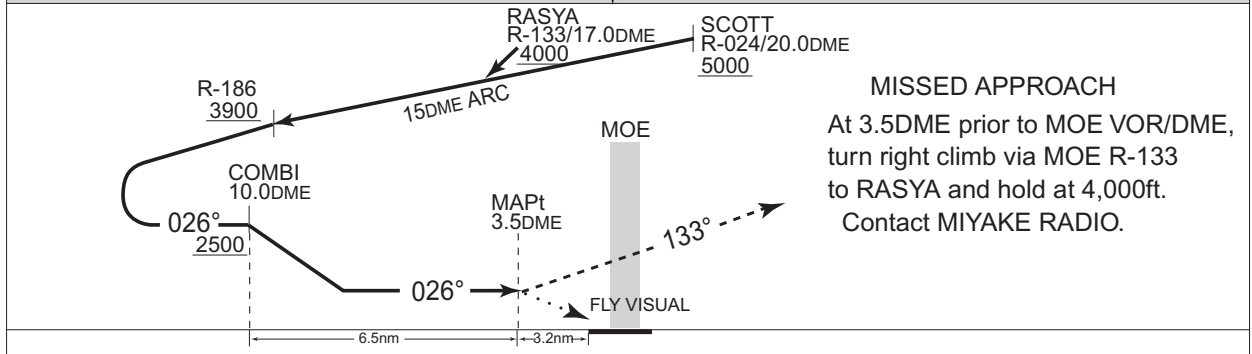
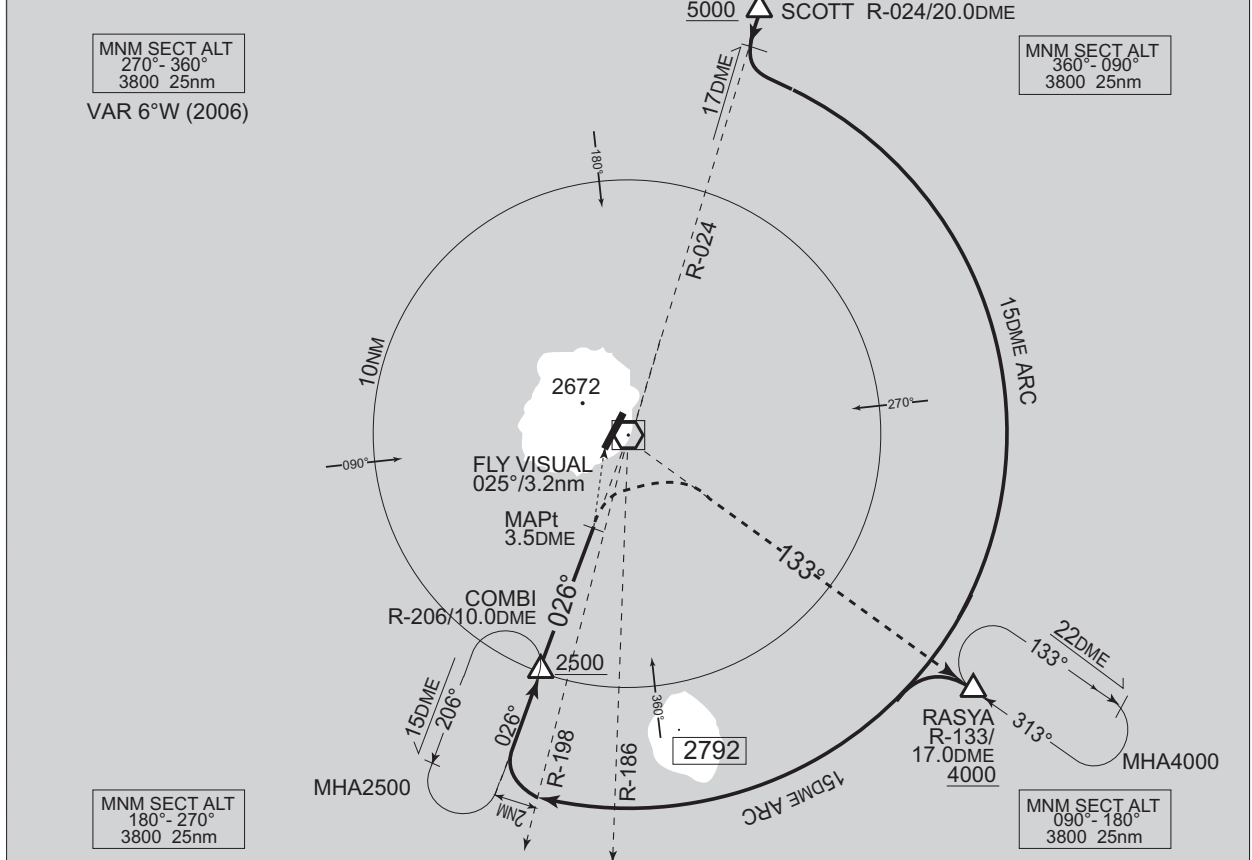
Circling to East side of RWY only.

INSTRUMENT APPROACH CHART

RJTQ / MIYAKEJIMA

VOR/DME C

<p>TOKYO CONTROL 125.9 – 134.15 318.2 – 227.3</p>	<p>OYAMA VOR/DME 108.65 MOE CH-23Y 34°04'16"N/139°33'41"E</p>	<p>MIYAKE RADIO 118.05 AFIS provided by New Chitose Airport Office</p>	<p>NO RADAR</p>
---	---	--	-----------------



MISSED APPROACH
At 3.5DME prior to MOE VOR/DME, turn right climb via MOE R-133 to RASYA and hold at 4,000ft. Contact MIYAKE RADIO.

MINIMA		AD elev. 65
CAT	CIRCLING	
	MDA(H)	VIS
A	760 (695)	3200
B		
C		
D		

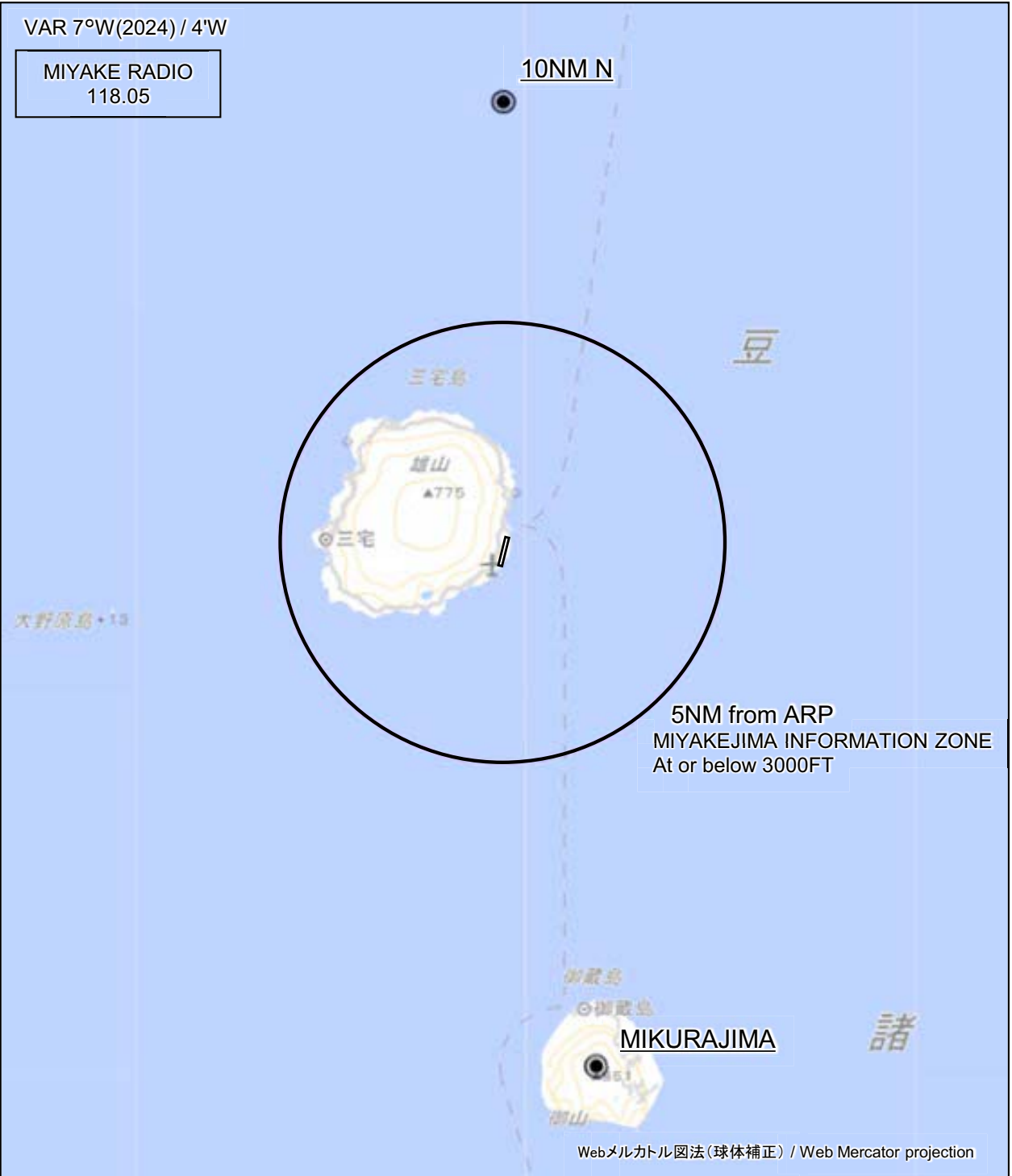
CHANGE: AFIS unit.

Circling to East side of RWY only.

INTENTIONALLY LEFT BLANK

RJTQ / MIYAKEIJIMA

Visual REP



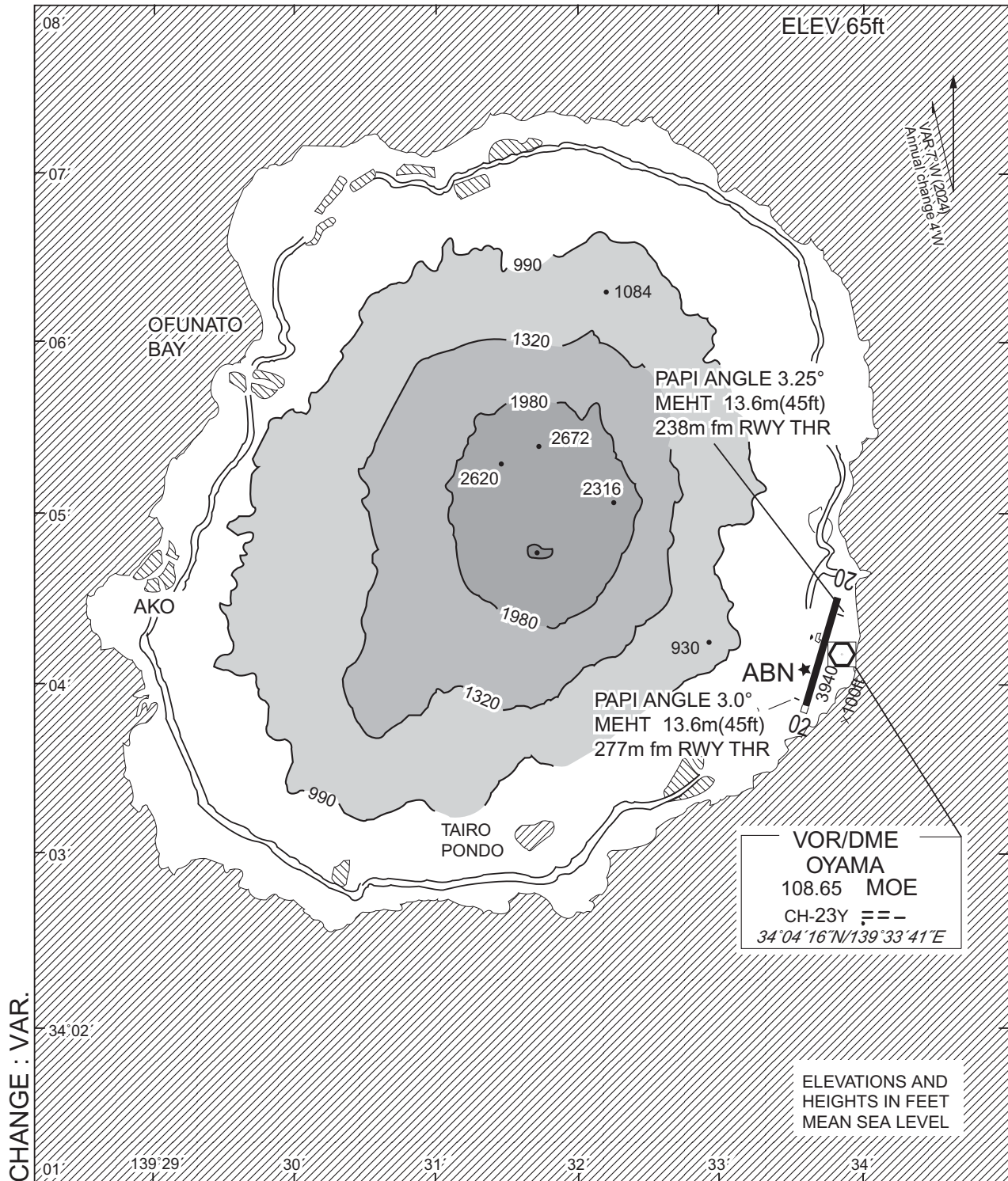
※図中に標高を示す数字がある場合、単位はメートル(m)である。The unit of measurement used to express elevation is meter(m).

CHANGE : VAR.	Call sign	BRG / DIST from ARP	Remarks
	10NM N	360°T / 10.0NM	海上 Over the sea
	御蔵島 Mikurajima	170°T / 12.1NM	御山 Mt. Oyama

Note : In the W direction of the airport, A/G COM from Miyake Radio is blinded by Mt. Oyama (2,543ft).

RJTQ / MIYAKEJIMA

LDG CHART



RJTQ / MIYAKEJIMA

Minimum Vectoring Altitude CHART

