

STANDARD DEPARTURE CHART -INSTRUMENT

RJTU / UTSUNOMIYA

SID

KOGAR FIVE DEPARTURE

RWY01 : Climb RWY HDG to 1000FT, turn left HDG 164° to intercept and proceed...

RWY19 : Climb RWY HDG to 800FT, turn right,...  
...via JDT R209 to KOGAR.  
Cross KOGAR at assigned altitude.

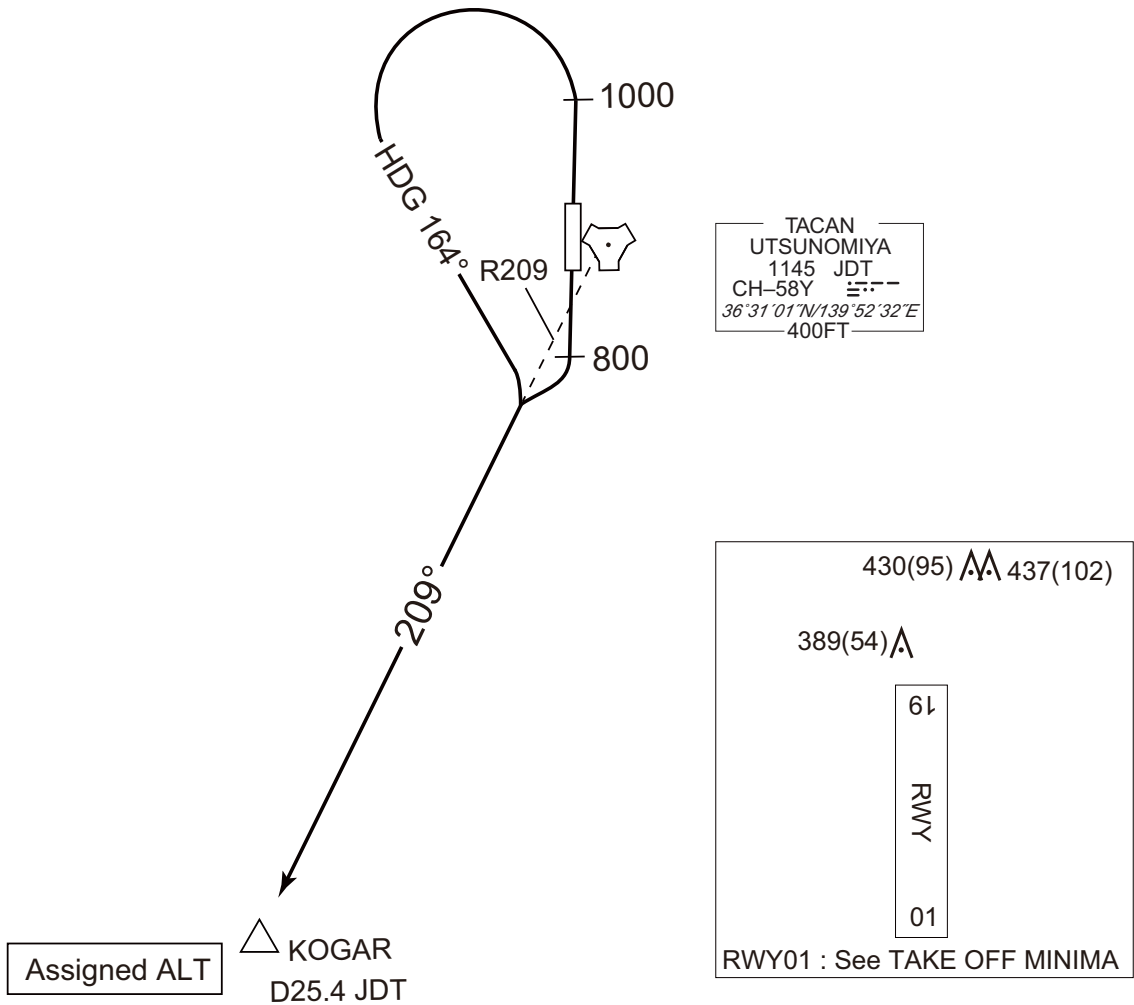
Note RWY01 : 4.3% climb gradient required up to 1000FT.

OBST ALT 1837FT located at 7.6NM 329° FM end of RWY01.

RWY19 : 4.4% climb gradient required up to 800FT.

OBST ALT 358FT located at 0.2NM 205° FM end of RWY19.

CHANGE : PROC renamed. PROC course. Note added. OBST chart added.



STANDARD DEPARTURE CHART -INSTRUMENT

RJTU / UTSUNOMIYA

SID

MIKRA FOUR DEPARTURE

RWY01 : Climb RWY HDG to 1000FT, turn left ,...

RWY19 : Climb RWY HDG to 800FT, turn right ,...

...via JDT R360 to intercept and proceed via JDT17.6DME clockwise ARC via JDT R022 to MIKRA.

Cross JDT R360/7.0DME at or below 4000FT, cross MIKRA at assigned altitude.

Note RWY01 : 4.1% climb gradient required up to 3600FT.

OBST ALT 813FT located at 3.0NM 023° FM end of RWY01.

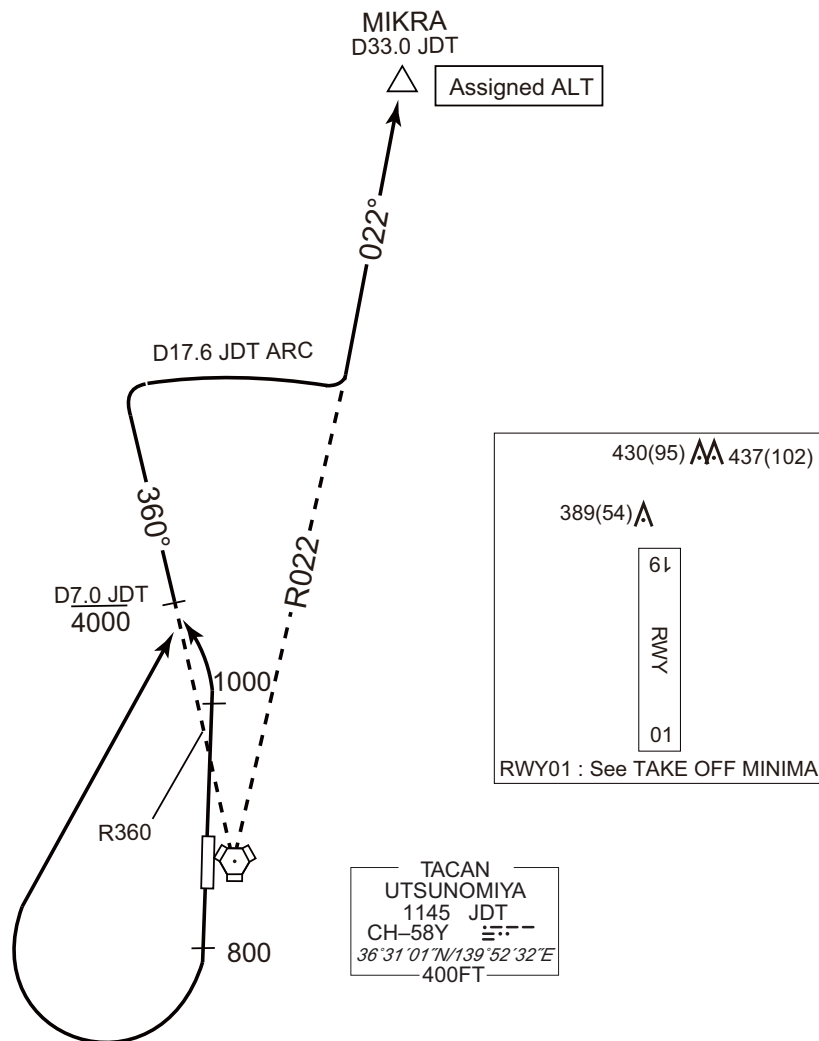
OBST ALT 4331FT located at 22.3NM 360° FM end of RWY01.

RWY19 : 4.4% climb gradient required up to 4100FT.

OBST ALT 358FT located at 0.2NM 205° FM end of RWY19.

OBST ALT 5052FT located at 23.3NM 357° FM end of RWY19.

CHANGE : PROC renamed. PROC course. Note added. OBST chart added.



STANDARD DEPARTURE CHART -INSTRUMENT

RJTU / UTSUNOMIYA

SID

UTSUNOMIYA REVERSAL ONE DEPARTURE

RWY01 : Climb RWY HDG to 1000FT, turn right...

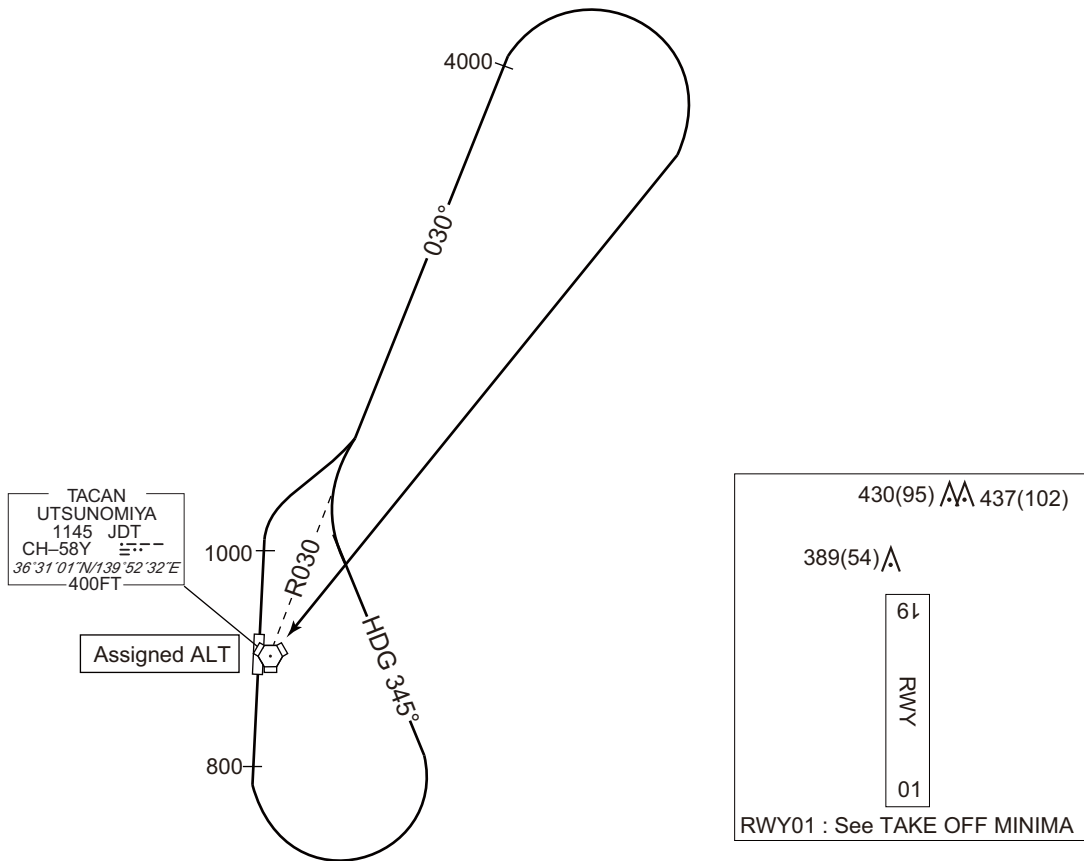
RWY19 : Climb RWY HDG to 800FT, turn left HDG345° to intercept and proceed...  
 ...via JDT R030 to 4000FT, turn right direct JDT TACAN.  
 Cross JDT TACAN at assigned altitude.

Note RWY01 : 4.1% climb gradient required up to 1000FT.

OBST ALT 813FT located at 3.0NM 023° FM end of RWY01.

RWY19 : 4.4% climb gradient required up to 800FT.

OBST ALT 358FT located at 0.2NM 205° FM end of RWY19.



CHANGE : New PROC.

**INTENTIONALLY LEFT BLANK**

STANDARD ARRIVAL CHART-INSTRUMENT

RJTU / UTSUNOMIYA

STAR

IPNAX ARRIVAL

From over JDT TACAN, proceed via JDT R174 to IPNAX.

Cross IPNAX at or above 3000FT.

TACAN  
UTSUNOMIYA  
1145 JDT  
CH-58Y  $\equiv \cdot \cdot \cdot - -$   
 $36^{\circ}31'01"N/139^{\circ}52'32"E$   
400FT



174°

$\triangle$  3000

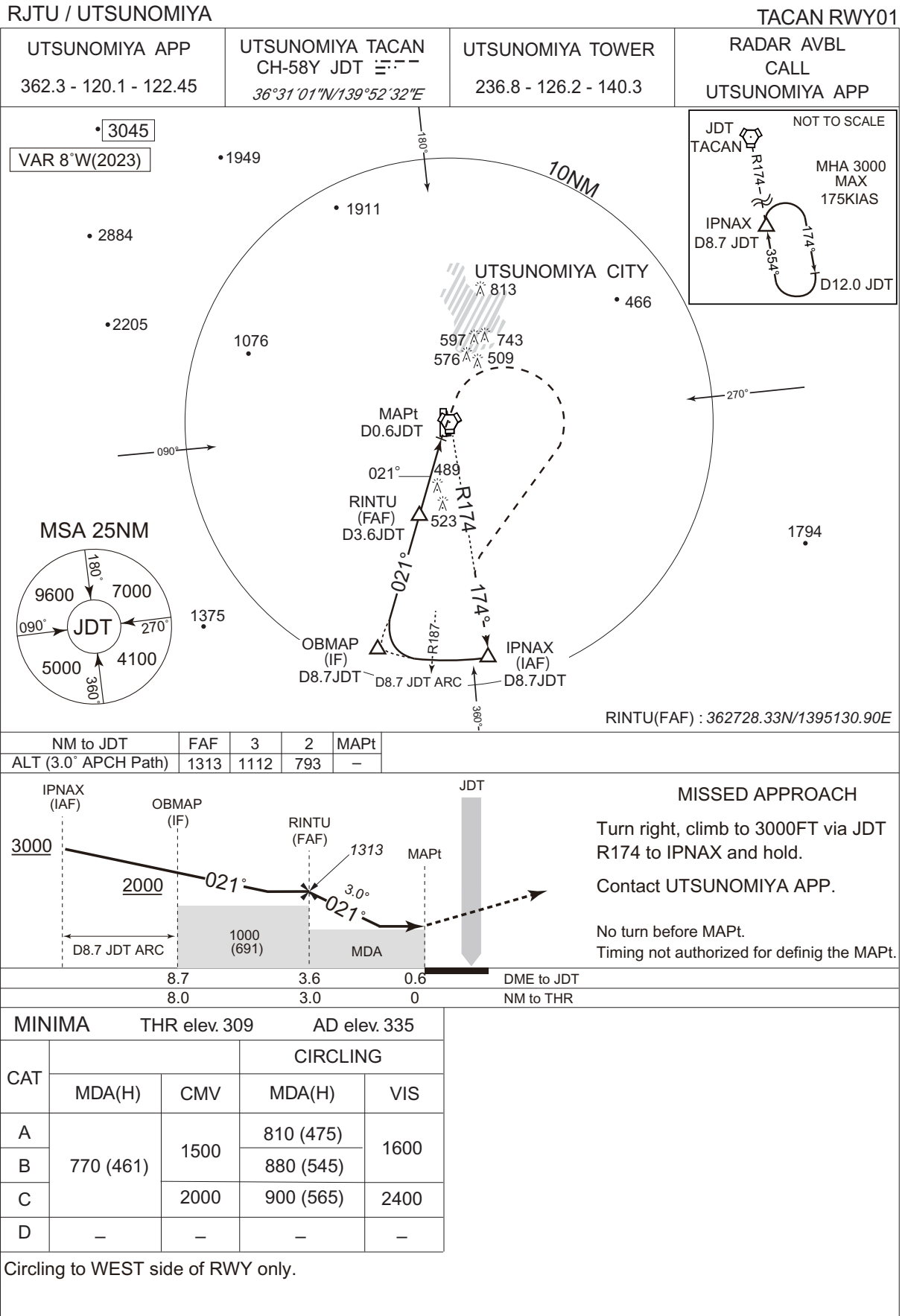
IPNAX  
D8.7 JDT

CHANGE : New PROC.

**INTENTIONALLY LEFT BLANK**

INSTRUMENT APPROACH CHART

CHANGE : PROC renamed. VAR. PROC course. Missed APCH course. HLDG pattern. MSA. IPNAX, OBMAP, RINTU established. TOCHI abolished. ALT(3.0° APCH Path) established. THR elev. AD elev. MDA(H). Circling restriction established.



**INTENTIONALLY LEFT BLANK**