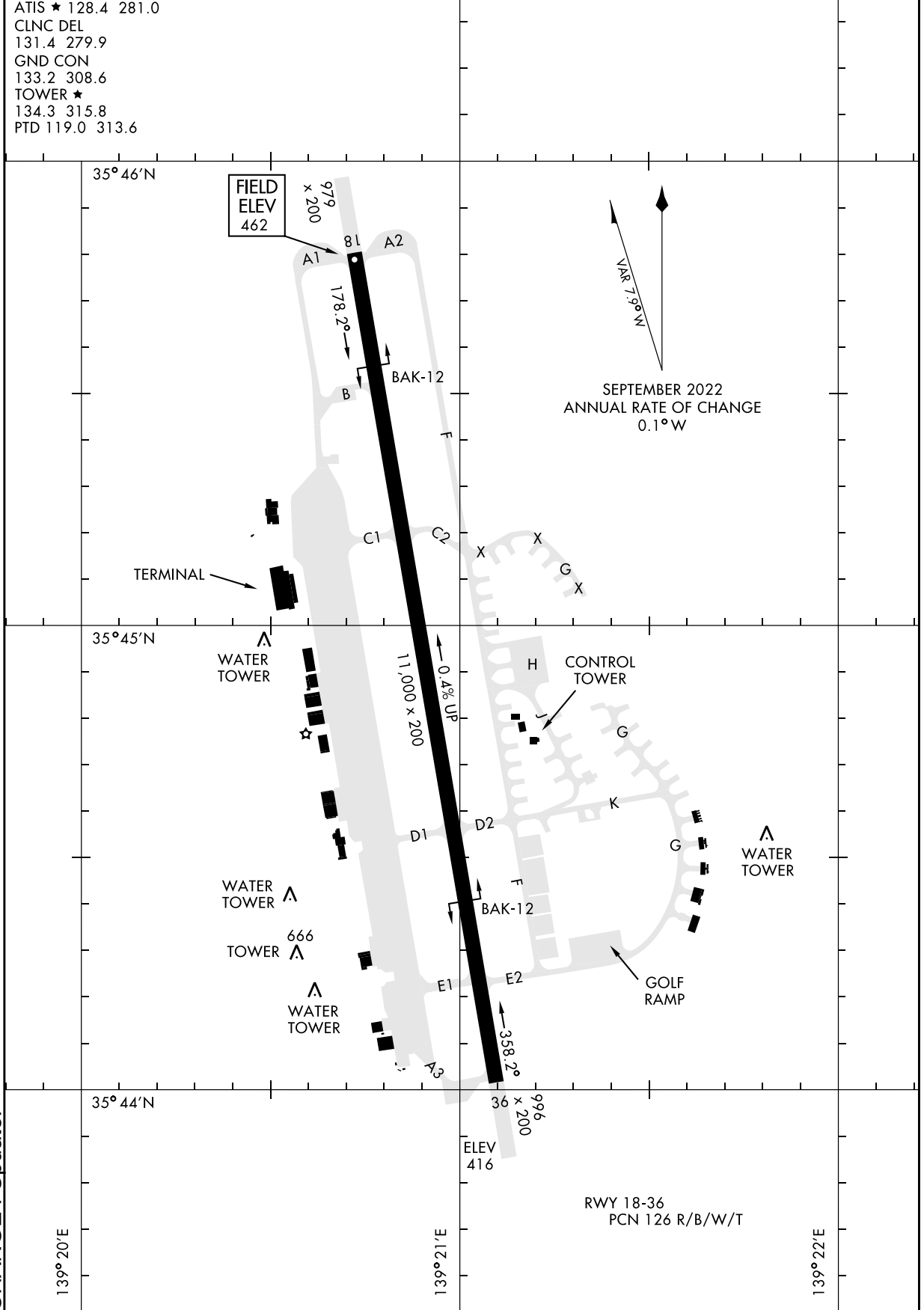


RJTY / YOKOTA

AD CHART



CHANGE : Update.

NOTE: REPRINTING DOD FLIP

STANDARD DEPARTURE CHART - INSTRUMENT

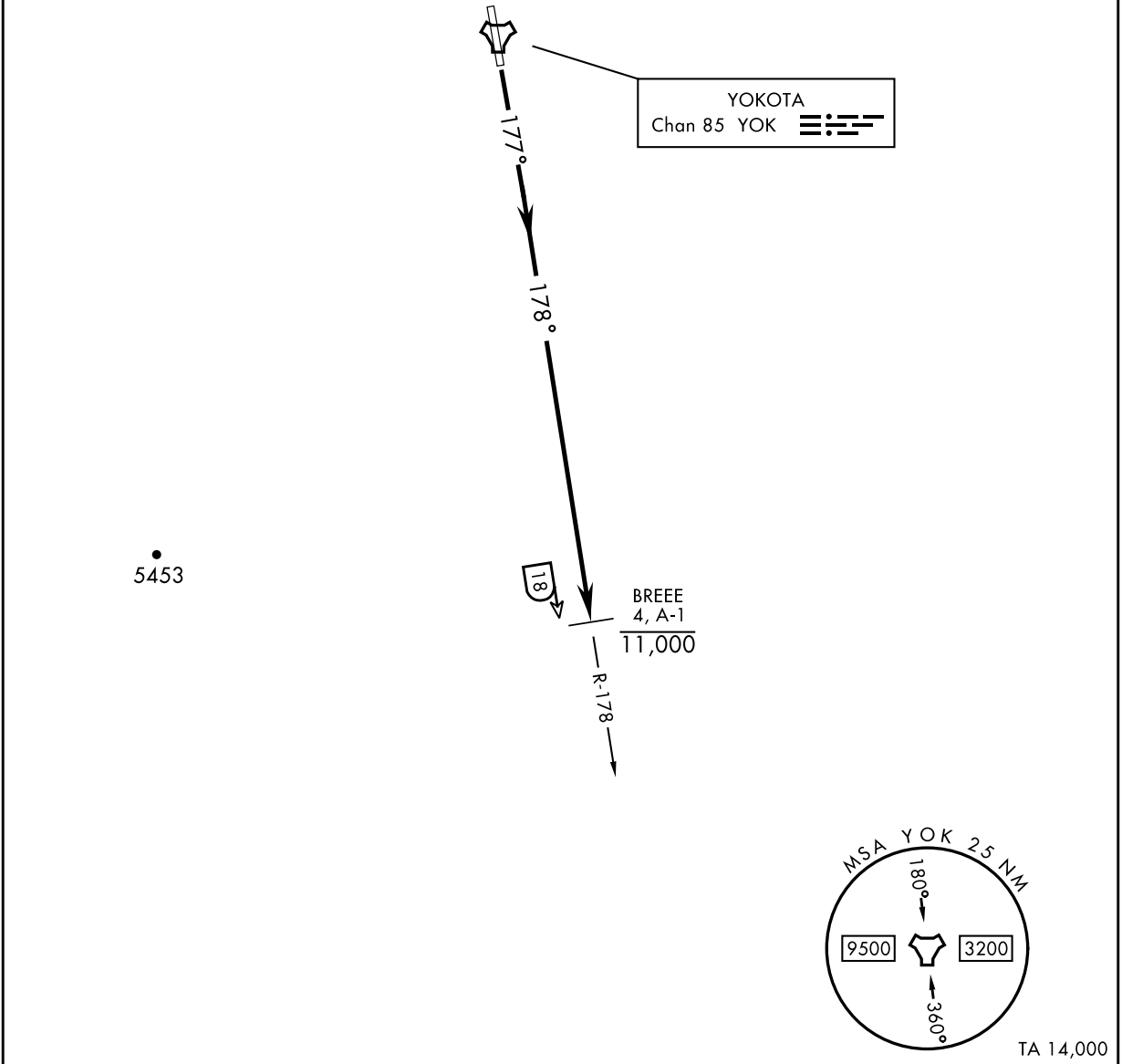
RJTY / YOKOTA

BREEE FIVE DEPARTURE(OBSTACLE)

ATIS★ 128.4 281.0
CLNC DEL
131.4 279.9
GND CON
133.2 308.6
TOWER★
134.3 315.8
DEP CON
122.1 363.8

Rwy	Knots	60	120	180	240	300	360
18	V/V(fpm)	218	436	654	872	1090	1308

Minimum climb rate to 900



CHANGE : Update.



DEPARTURE ROUTE DESCRIPTION

TAKEOFF RWY 18: Climb on YOK TACAN R-178 to BREEE, cross BREEE at or below 11,000. Continue as assigned by ATC.

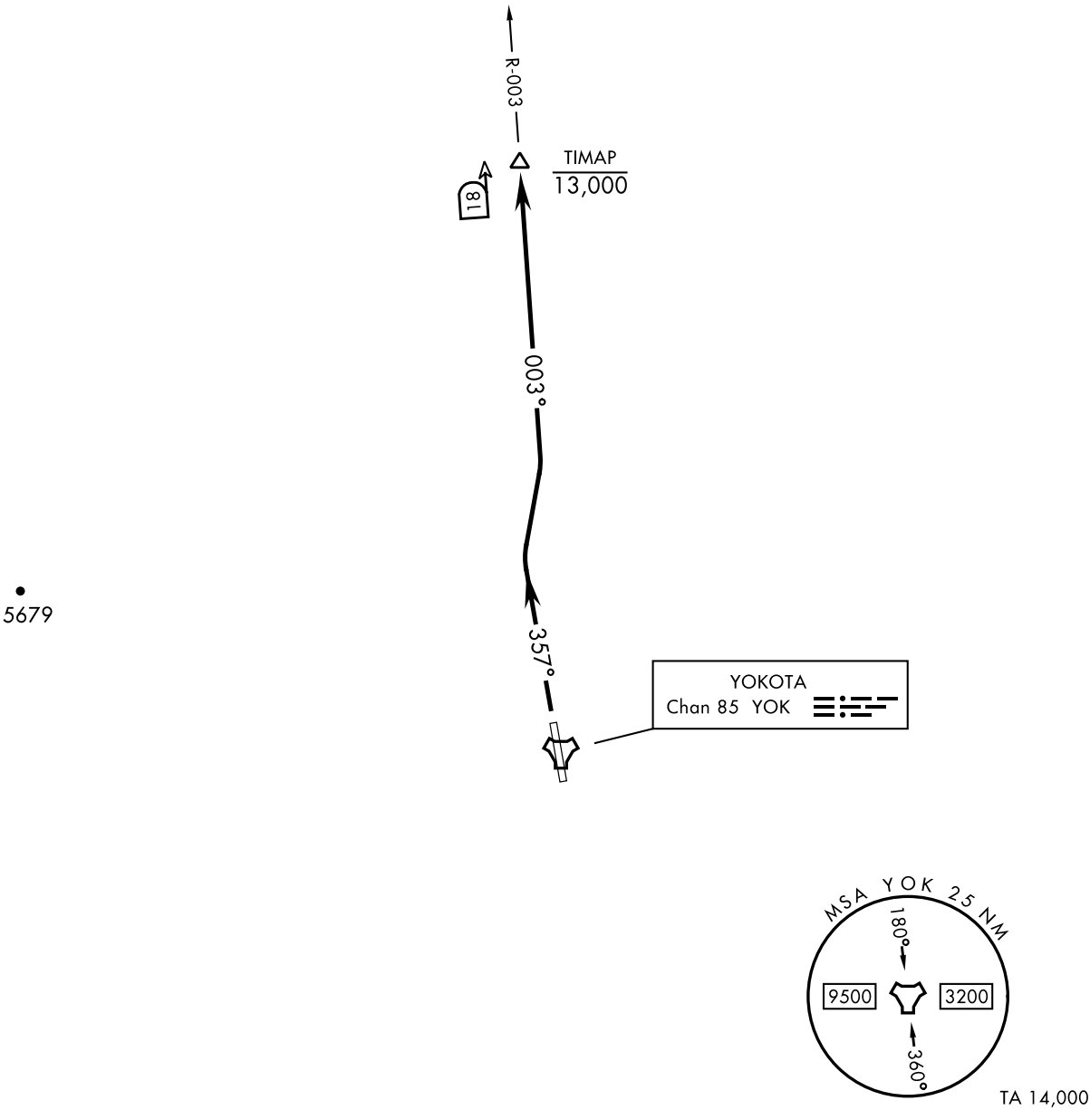
NOTE: REPRINTING DOD FLIP

STANDARD DEPARTURE CHART - INSTRUMENT

RJTY / YOKOTA

TIMAP FIVE DEPARTURE(OBSTACLE)

ATIS★ 128.4 281.0
CLNC DEL
131.4 279.9
GND CON
133.2 308.6
TOWER★
134.3 315.8
DEP CON
122.1 363.8



CHANGE : Update.



DEPARTURE ROUTE DESCRIPTION

TAKEOFF RWY 36: Climb to 4000, turn right to intercept YOK TACAN R-003 to TIMAP.
Cross TIMAP at or below 13,000. Continue as assigned by ATC.

NOTE: REPRINTING DOD FLIP

STANDARD DEPARTURE CHART - INSTRUMENT

RJTY / YOKOTA

BUSYU TWO DEPARTURE

ATIS★ 128.4 281.0
CLNC DEL
131.4 279.9
GND CON
133.2 308.6
TOWER★
134.3 315.8
DEP CON
122.1 363.8

Rwy	Knots	60	120	180	240	300	360
* 18 (a)	V/V(fpm)	360	720	1080	1440	1800	2160
† 18 (b)	V/V(fpm)	465	930	1395	1860	2325	2790
* 36 (c)	V/V(fpm)	383	766	1149	1532	1915	2298
† 36 (b)	V/V(fpm)	476	952	1428	1904	2380	2856

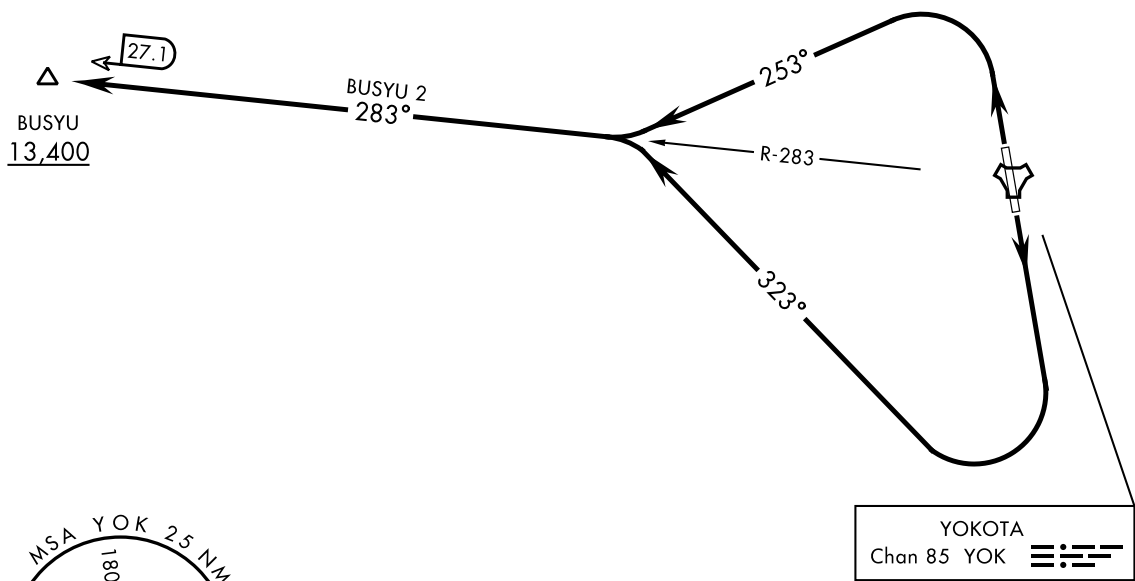
* Minimum † ATC Climb Rate

(a) to 8000

(b) to 13,400

(c) to 7900

7575



TLv FL140
TA 14,000



DEPARTURE ROUTE DESCRIPTION

TAKEOFF RWY 18: Climbing right turn to intercept YOK TACAN R-283 to BUSYU. Cross BUSYU at or above 13,400. Maintain ATC assigned altitude.

TAKEOFF RWY 36: Climbing left turn to intercept YOK TACAN R-283 to BUSYU. Cross BUSYU at or above 13,400. Maintain ATC assigned altitude.

CHANGE : Update.

NOTE: REPRINTING DOD FLIP

STANDARD DEPARTURE CHART - INSTRUMENT

RJTY / YOKOTA

KANTO ONE DEPARTURE(RNAV)

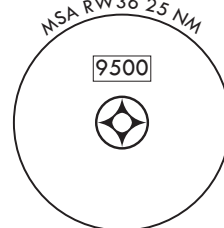
DEP CON
122.1 363.8

RNAV1-GPS

RADAR required (non-GPS equipped
acft)

TIMAP
13,000

3478



TLv FL140
TA 14,000

DEPARTURE ROUTE DESCRIPTION

TAKEOFF RWY 36: Climb direct TIMAP, cross at or below 13,000 or as assigned by ATC.

CHANGE : New PROC.

NOTE: REPRINTING DOD FLIP

STANDARD DEPARTURE CHART - INSTRUMENT

RJTY / YOKOTA

FUSSA ONE DEPARTURE(RNAV)

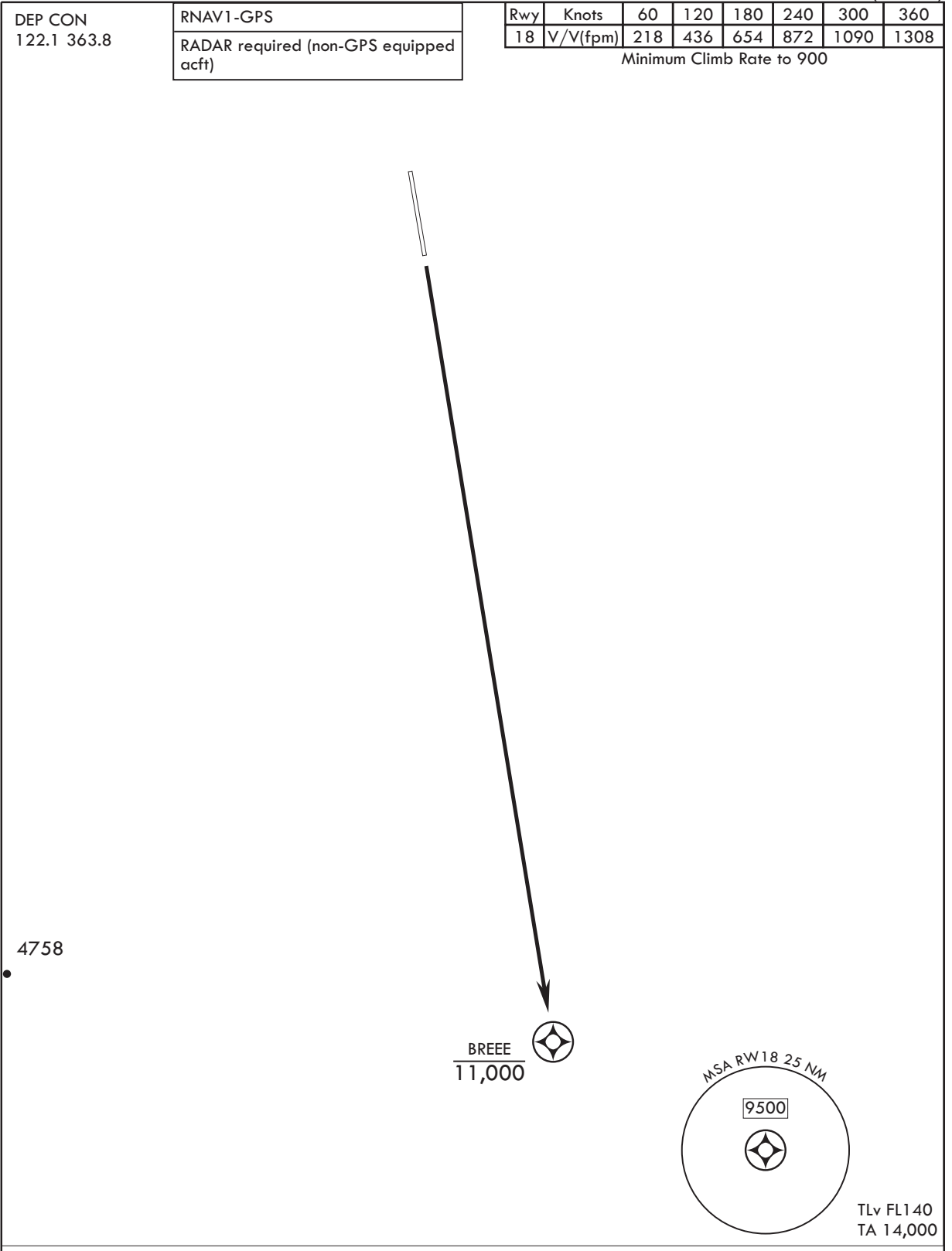
DEP CON
122.1 363.8

RNAV1-GPS
RADAR required (non-GPS equipped
acft)

Rwy	Knots	60	120	180	240	300	360
18	V/V(fpm)	218	436	654	872	1090	1308

Minimum Climb Rate to 900

CHANGE : New PROC.



DEPARTURE ROUTE DESCRIPTION

TAKEOFF RWY 18: Climb direct BREEE, cross at or below 11,000 or as assigned by ATC.

TLv FL140
TA 14,000

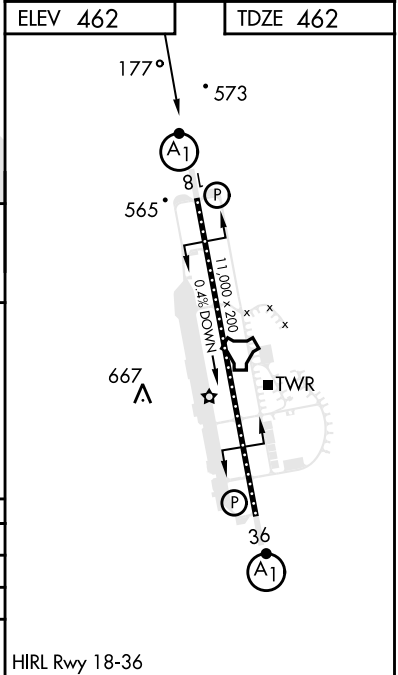
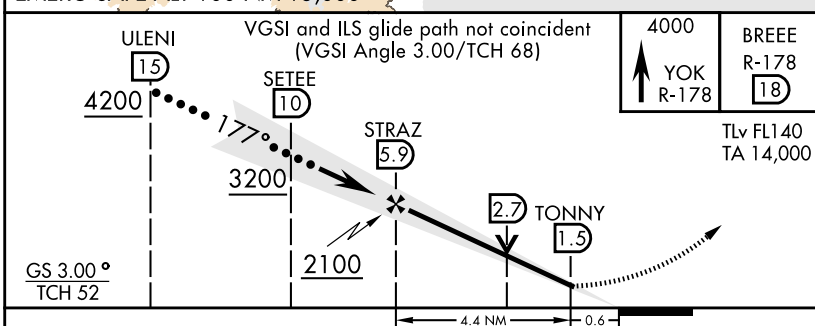
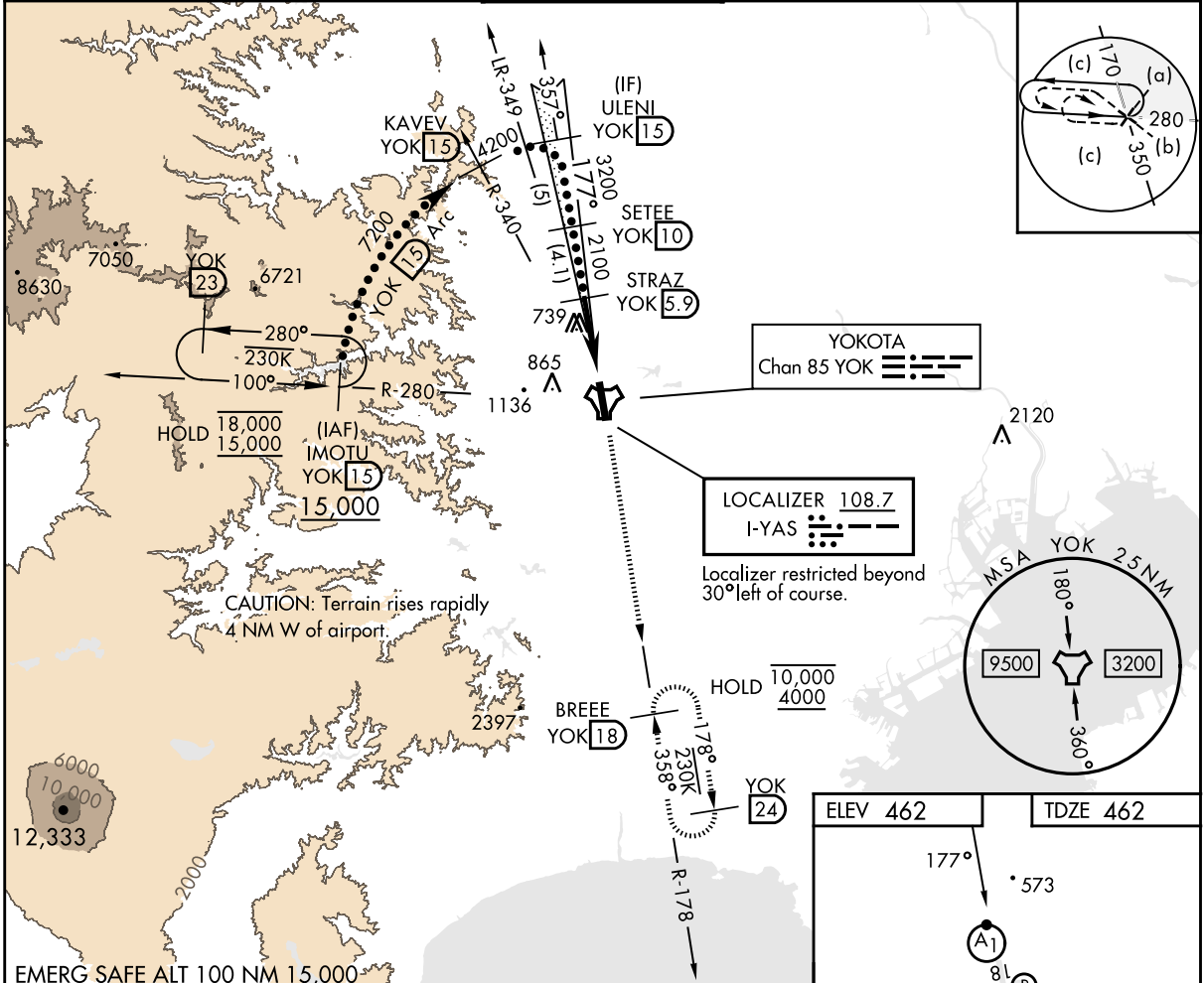
NOTE: REPRINTING DOD FLIP

INTENTIONALLY LEFT BLANK

INSTRUMENT APPROACH CHART

RJTY / YOKOTA

LOC I-YAS 108.7	APCH CRS 177°	Rwy ldg 11,000 TDZE 462 Arprt Elev 462	HI-ILS Y or LOC Y RWY18		
DME or RADAR required		ALSF-1		MISSED APPROACH: Climb to 4000 on YOK TACAN R-178 to BREEE and hold. Missed approach requires RADAR or RNAV for Non-TACAN equipped aircraft.	
▼ * When ALS inop, increase CAT CDE RVR to 40, vis to 3/4 mile. ** When ALS inop, increase CAT AB RVR to 55, vis to 1 mile; CAT CDE vis to 1 1/8 miles. *** Circling not authorized E of Rwy 18-36.					
ATIS ★ 128.4 281.0	APP CON 118.3 270.6 (Abv 5000) 123.8 261.4 (Blw 5000)	TOWER ★ 134.3 315.8	GND CON 133.2 308.6	CLNC DEL 131.4 279.9	



CHANGE : Update.

CATEGORY	A	B	C	D	E
S-ILS 18*	662/24		200	(200-1/2)	
S-LOC 18**	1120/24	658 (700-1/2)	1120-1 3/8	658 (700-1 3/8)	
☑ CIRCLING***	1120-1	1280-2 1/2		1360-3	1580-3
	658 (700-1)	818 (900-2 1/2)	898 (900-3)	1118(1200-3)	

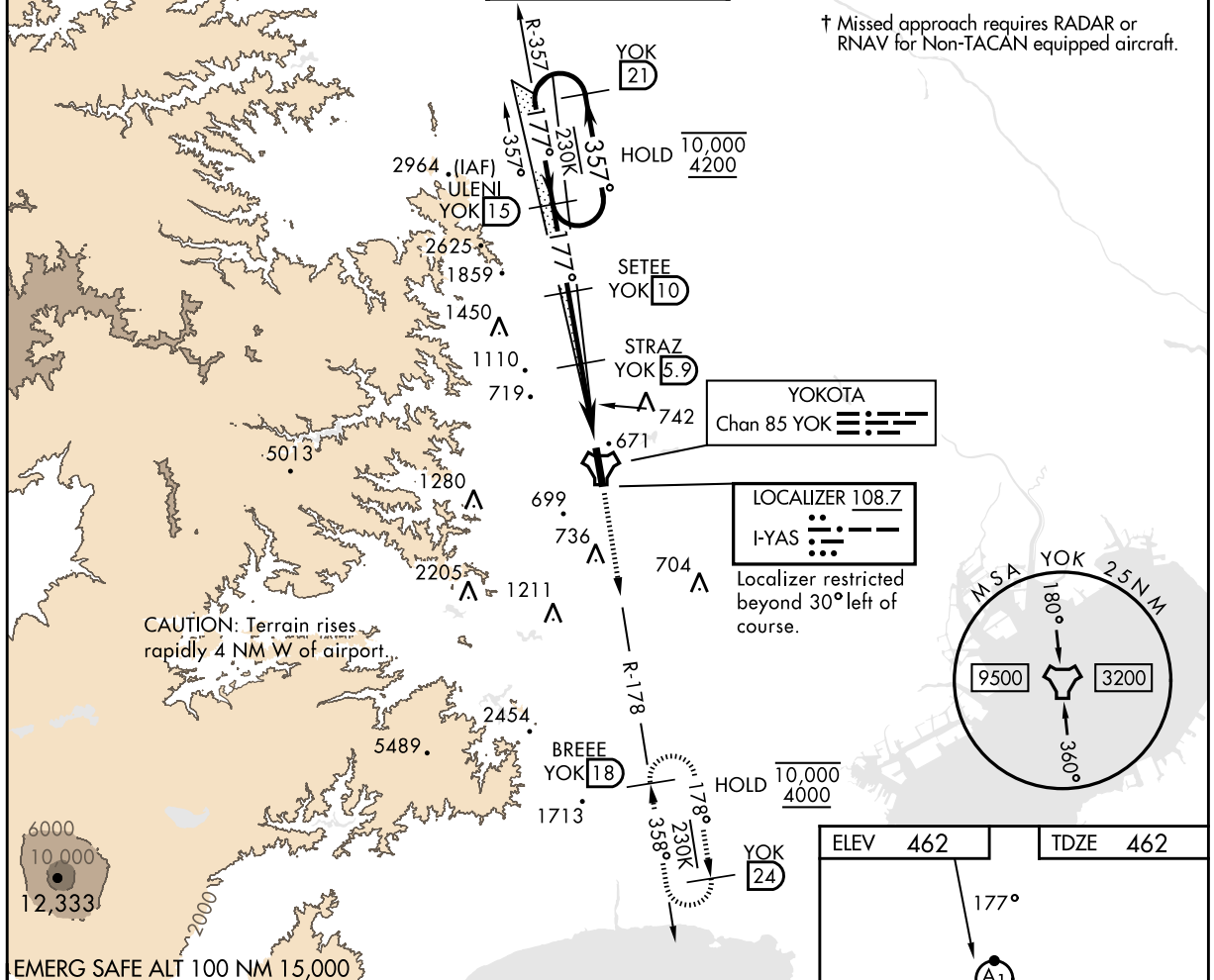
HIRL Rwy 18-36

NOTE: REPRINTING DOD FLIP

INSTRUMENT APPROACH CHART

RJTY / YOKOTA

LOC I-YAS 108.7	APCH CRS 177°	Rwy Idg 11,000 TDZE 462 Arprt Elev 462	ILS Z or LOC Z RWY18		
* When ALS inop, increase RVR to 40, vis to ¼ mile. ** When ALS inop increase CAT AB RVR to 55, vis to 1 mile; CAT CDE vis to 1 7/8 miles. *** Circling not authorized E of Rwy 18-36.		ALSIF-1 	† MISSED APPROACH: Climb to 4000 on YOK TACAN R-178 to BREEE and hold.		
ATIS ★ 128.4 281.0	APP CON 118.3 270.6 (Abv 5000) 123.8 261.4 (Blw 5000)	TOWER ★ 134.3 315.8	GND CON 133.2 308.6	CLNC DEL 131.4 279.9	



EMERG SAFE ALT 100 NM 15,000		VGSI and ILS glidepath not coincident (VGSI Angle 3.00/TCH 68)		TLv FL140 TA 14,000	4000	BREEE R-178	YOK R-178	YOK R-178	BREEE R-178
YOK 21 YOK 15 SETEE YOK 10 STRAZ YOK 5.9 TONNY YOK 1.5		10,000 4200 3200 2100		357° 177° 177° 3200 2100		4.4 NM 0.6 NM		530 529 533 518 510 520 475 666 520 36	
GS 3.00° TCH 52									
CATEGORY	A	B	C	D	E				
S-ILS 18*	699/24 237 (300-1/2)								
S-LOC 18**	1120/24 658 (700-1/2)		1120-1 3/8 658 (700-1 3/8)						
CIRCLING ***	1120-1 658 (700-1)		1280-2 1/2 818 (900-2 1/2)		1360-3 898 (900-3)	1580-3 1118 (1200-3)		HIRL Rwy 18-36	

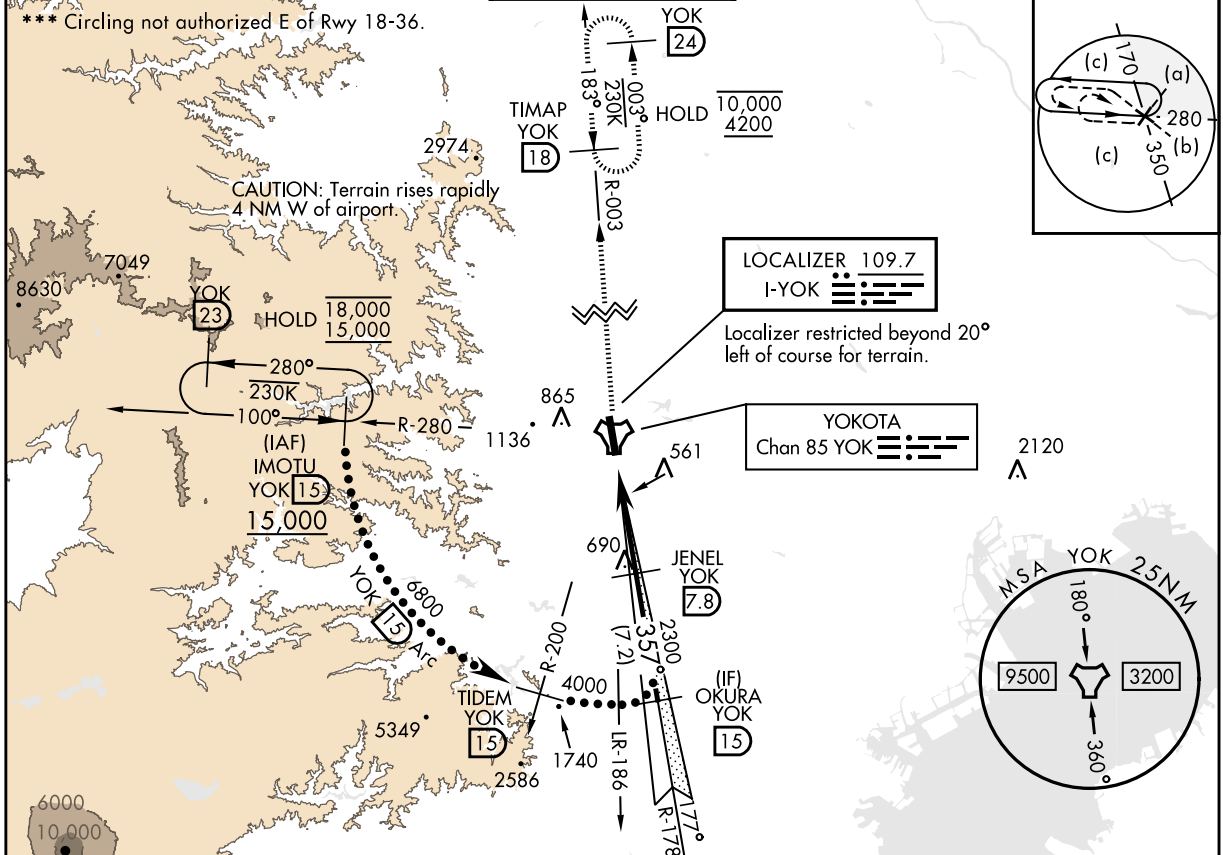
CHANGE: Update.

NOTE: REPRINTING DOD FLIP

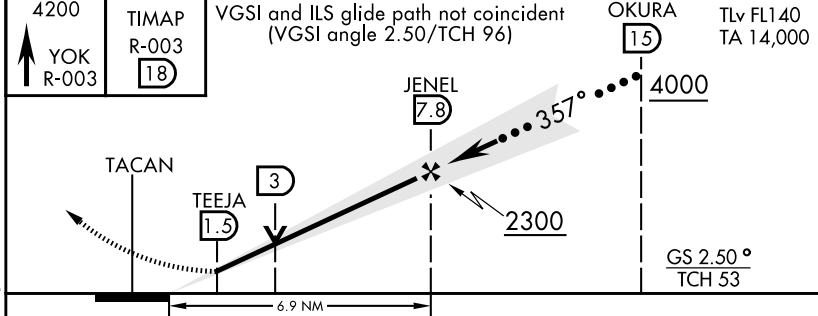
INSTRUMENT APPROACH CHART

RJTY / YOKOTA

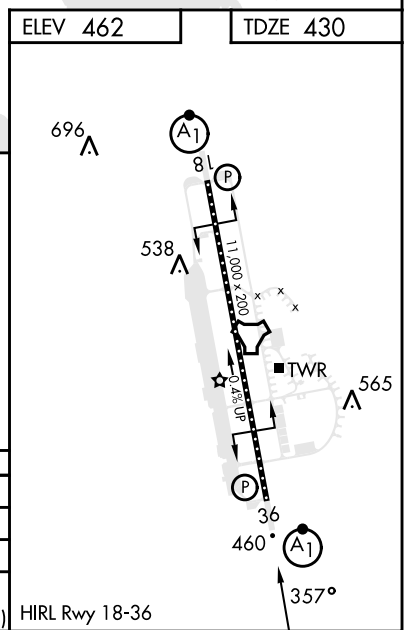
LOC I-YOK 109.7	APCH CRS 357°	Rwy ldg 11,000 TDZE 430 Arprt Elev 462	HI-ILS Y or LOC Y RWY36		
DME or RADAR required.		ALSIF-1 	MISSED APPROACH: Climb to 4200, intercept YOK TACAN R-003 to TIMAP and hold. (Missed approach requires RADAR or RNAV for Non-TACAN equipped aircraft.)		
* When TDZL/CL lights inop, increase RVR to 24. When ALS inop, increase RVR to 40, vis to 3/4 mile. ** When ALS inop, increase CAT AB RVR to 55, vis to 1 mile; CAT CDE vis to 1 3/4 miles.					
ATIS ★ 128.4 281.0	APP CON 118.3 270.6 (Abv 5000) 123.8 261.4 (Blw 5000)	TOWER ★ 134.3 315.8	GND CON 133.2 308.6	CLNC DEL 131.4 279.9	



4200	TIMAP R-003	VGSI and ILS glide path not coincident (VGSI angle 2.50/TCH 96)	OKURA YOK 15	TLv FL140 TA 14,000
------	-------------	---	--------------	------------------------



CATEGORY	A	B	C	D	E
S-ILS 36*	630/18 200 (200-1/2)				
S-LOC 36**	1040/24 610 (600-1/2)	1040-1 3/8 610 (600-1 3/8)			
CIRCLING***	1040-1 578 (600-1)	1280-2 1/2 818 (900-2 1/2)	1360-3 898 (900-3)	1580-3 1118 (1200-3)	



CHANGE : Update.

NOTE: REPRINTING DOD FLIP

INSTRUMENT APPROACH CHART

RJTY / YOKOTA

LOC I-YOK 109.7	APCH CRS 357°	Rwy ldg 11,000 TDZE 430 Arprt Elev 462
---------------------------	-------------------------	---

ILS Z or LOC Z RWY36

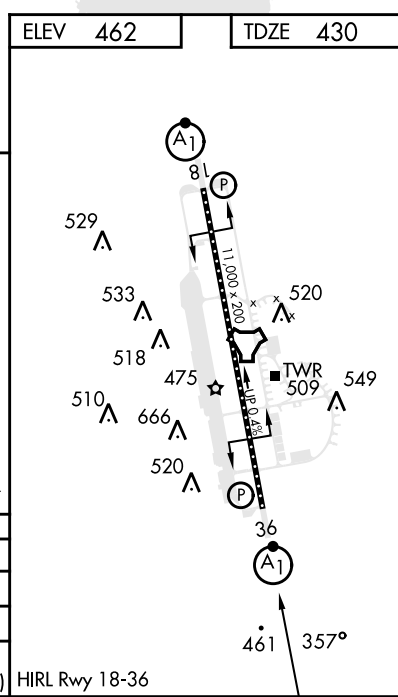
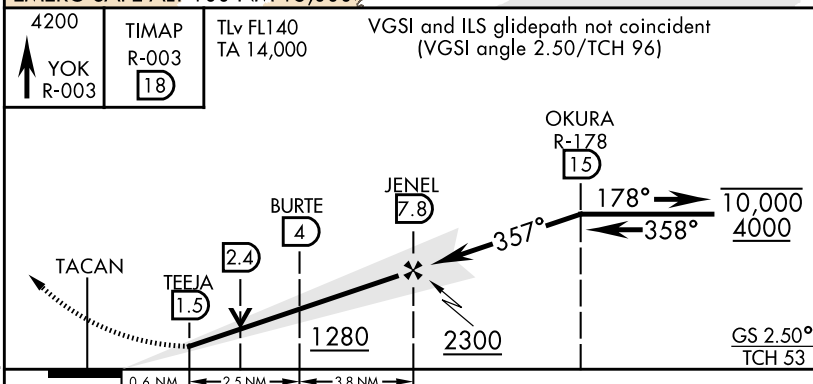
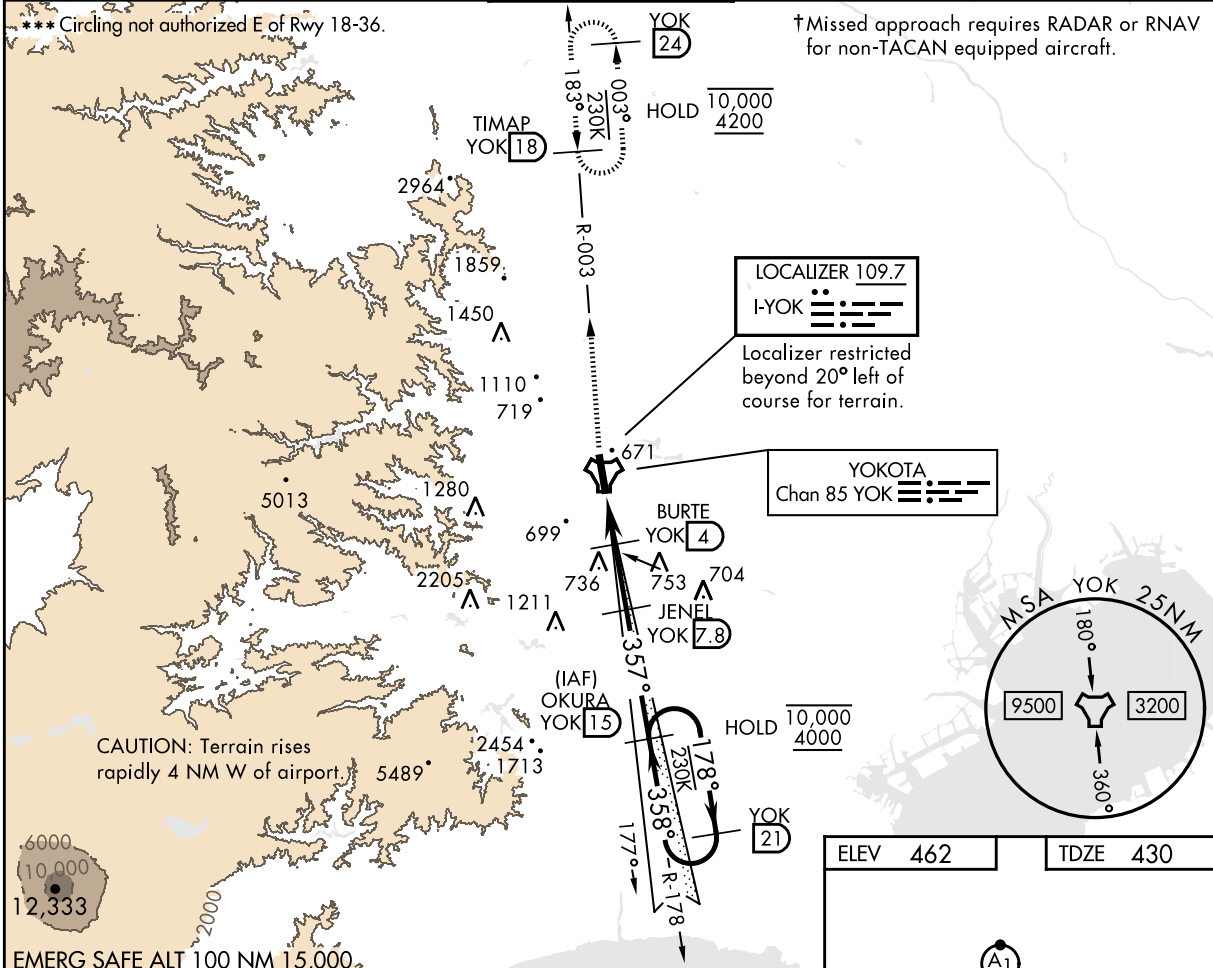
RADAR or DME required.

▼ * When ALS inop, increase RVR to 40, vis to 3/4 mile.
When TDZL/CL lights inop increase RVR to 24.
** When ALS inop, increase CAT AB RVR to 55, vis to 1 mile; CAT CDE vis to 1 1/4 miles.



† MISSED APPROACH: Climb to 4200, intercept YOK TACAN R-003 to TIMAP and hold.

ATIS ★ 128.4 281.0	APP CON 118.3 270.6 (Abv 5000) 123.8 261.4 (Blw 5000)	TOWER ★ 134.3 315.8	GND CON 133.2 308.6	CLNC DEL 131.4 279.9
------------------------------	---	-------------------------------	-------------------------------	--------------------------------



CHANGE : Update.

4200	TIMAP R-003	TLv FL140 TA 14,000	VGSi and ILS glidepath not coincident (VGSi angle 2.50/TCH 96)		
↑ YOK R-003	18				
			OKURA R-178 (15)	178° → 10,000	← 358° 4000
			JENEL (7.8)	← 357°	→ 2300
			BURTE (4)	← 1280	→ 2300
			TEEJA (1.5)	← 0.6 NM	→ 2300
			TACAN	← 0.6 NM	→ 2300
				← 2.5 NM	→ 2300
				← 3.8 NM	→ 2300
				GS 2.50°	TCH 53

CATEGORY	A	B	C	D	E
S-ILS 36 *	630/18		200	(200-1/2)	
S-LOC 36 **	860/24	430 (400-1/2)	860/40	430	(400-3/4)
*** CIRCLING	1060-1 598 (600-1)	1280-2 1/2 818 (900-2 1/2)	1360-3 898 (900-3)	1580-3	1118 (1200-3)

HIRL Rwy 18-36

NOTE: REPRINTING DOD FLIP

INSTRUMENT APPROACH CHART

RJTY / YOKOTA

APCH CRS	Rwy ldg 11,000
177°	TDZE 462
	Arprt Elev 462

RNAV(GPS) RWY18

DME/DME RNP - 0.3 NA

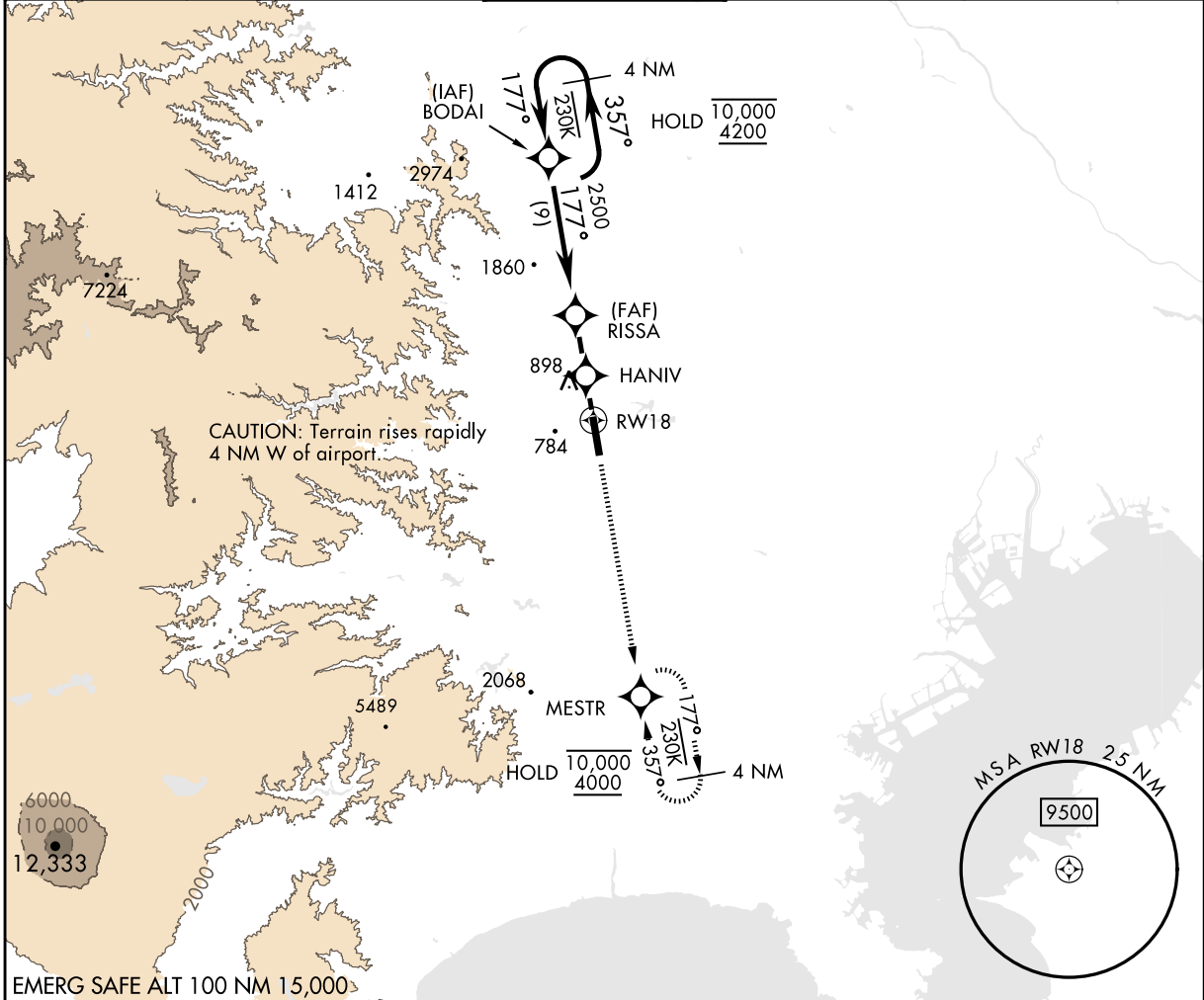
▼ *When ALS inop, increase CAT AB RVR to 55, vis to 1 mile, CAT CD vis to 1½ miles.
**Circling not authorized E of Rwy 18-36.

ALSF-1



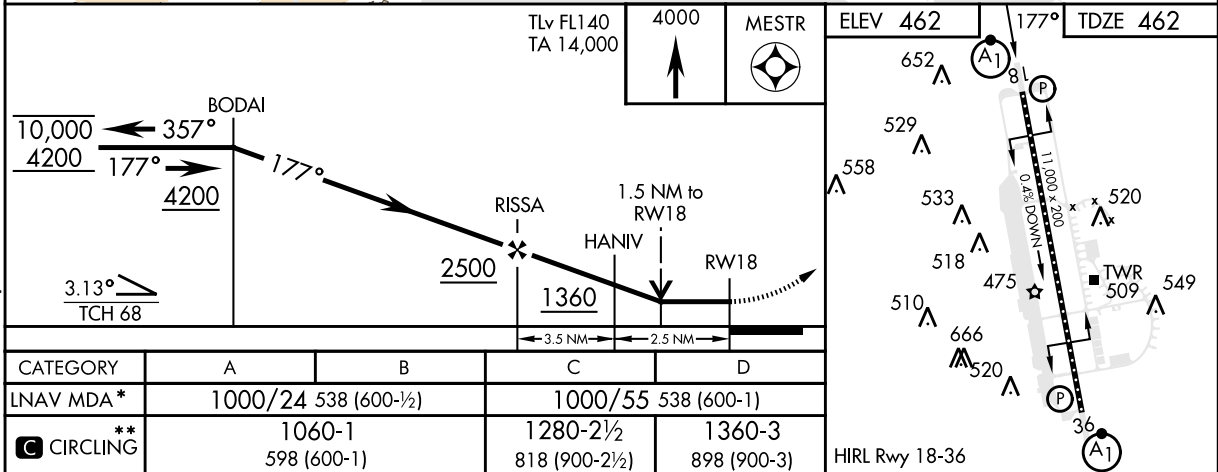
MISSED APPROACH: Climb to 4000 direct MESTR WPT and hold.

ATIS ★	APP CON	TOWER ★	GND CON	CLNC DEL
128.4 281.0	118.3 270.6 (Abv 5000) 123.8 261.4 (Blw 5000)	134.3 315.8	133.2 308.6	131.4 279.9



EMERG SAFE ALT 100 NM 15,000

CHANGE : Update.



NOTE: REPRINTING DOD FLIP

INSTRUMENT APPROACH CHART

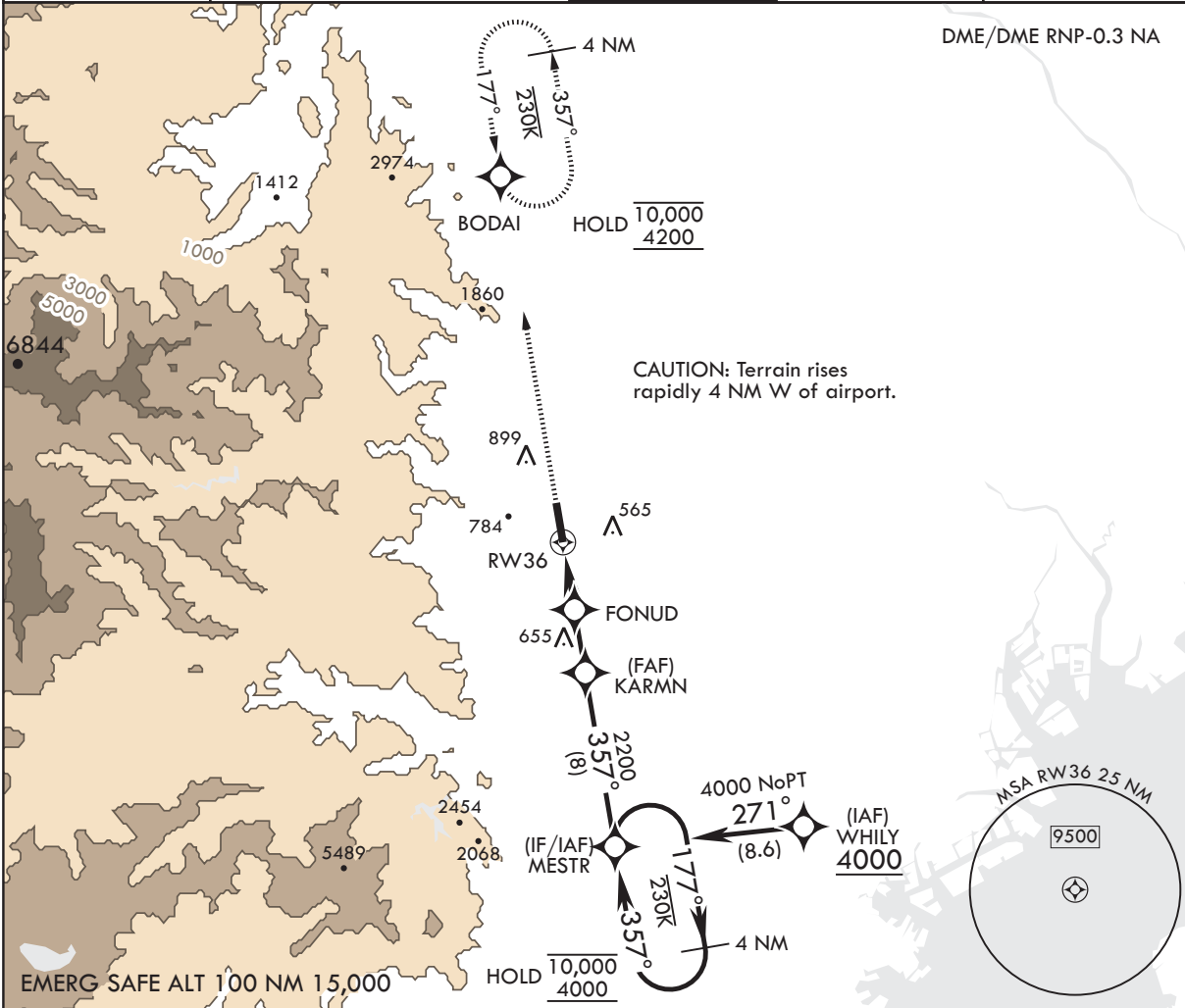
RJTY / YOKOTA

APCH CRS 357°	Rwy Idg 11,000
	TDZE 430
	Arpt Elev 462

RNAV(GPS) RWY36

<p>▼ * When ALS inop, increase CAT AB RVR to 55, vis to 1 mile, CAT CD vis to 1 3/8 miles. ** Circling not authorized East of Rwy 18-36.</p>	<p>ALSF-1 </p>	<p>MISSED APPROACH: Climb to 4200 direct BODAI and hold.</p>
--	--------------------	--

<p>ATIS* 128.4 281.0</p>	<p>APP CON 118.3 270.6 (ABV 5000MSL) 123.8 261.4 (BLW 5000MSL)</p>	<p>TOWER* 134.3 315.8</p>	<p>GND CON 133.2 308.6</p>	<p>CLNC DEL 131.4 279.9</p>
------------------------------	--	-------------------------------	--------------------------------	---------------------------------



<p>4200 BODAI </p>	<p>VGSI and descent angles not not coincident (VGSI Angle 2.50/TCH 96).</p>	<p>ELEV 462</p>	<p>TDZE 430</p>	
<p>TLv FL140 TA 14,000</p>	<p>MESTR Holding Pattern 177° 10,000 ← 357° 4000</p>	<p></p>		
<p>CATEGORY</p>	<p>A</p>	<p>B</p>	<p>C</p>	<p>D</p>
<p>LNAV MDA*</p>	<p>900/24 470 (500-1/2)</p>	<p>900/50 470 (500-1)</p>	<p>1280-2 1/2 818 (900-2 1/2)</p>	<p>1360-3 898 (900-3)</p>
<p> CIRCLING**</p>	<p>1020-1 558 (600-1)</p>			

CHANGE : Update.

HIRL all Rwys

NOTE: REPRINTING DOD FLIP