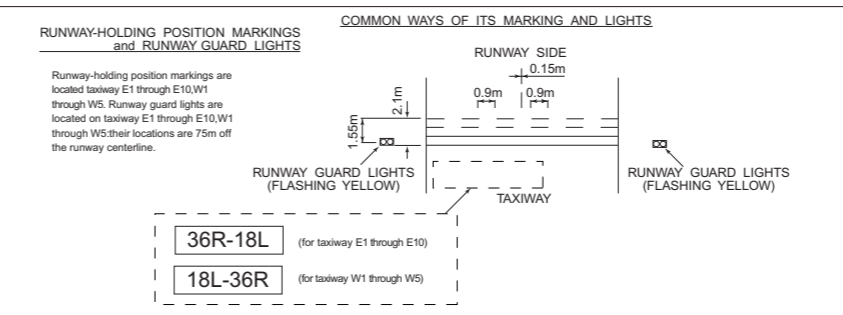
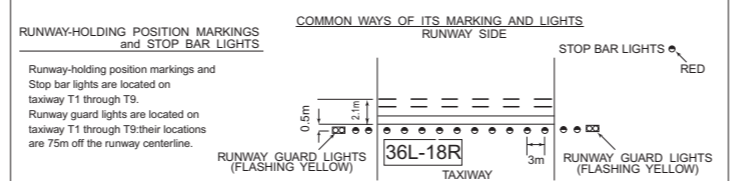
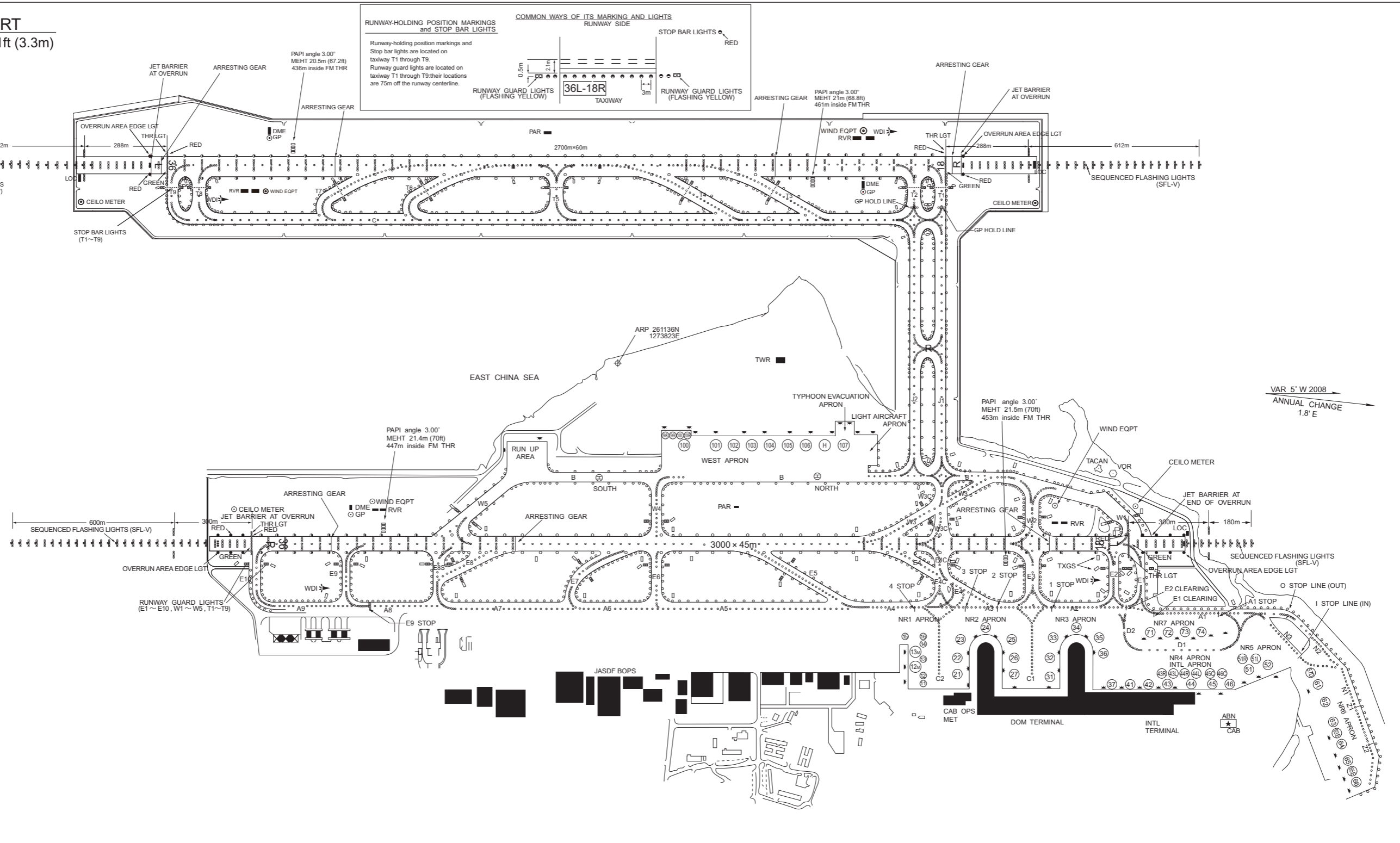


AERODROME CHART

NAHA AIRPORT
ELEV 11ft (3.3m)

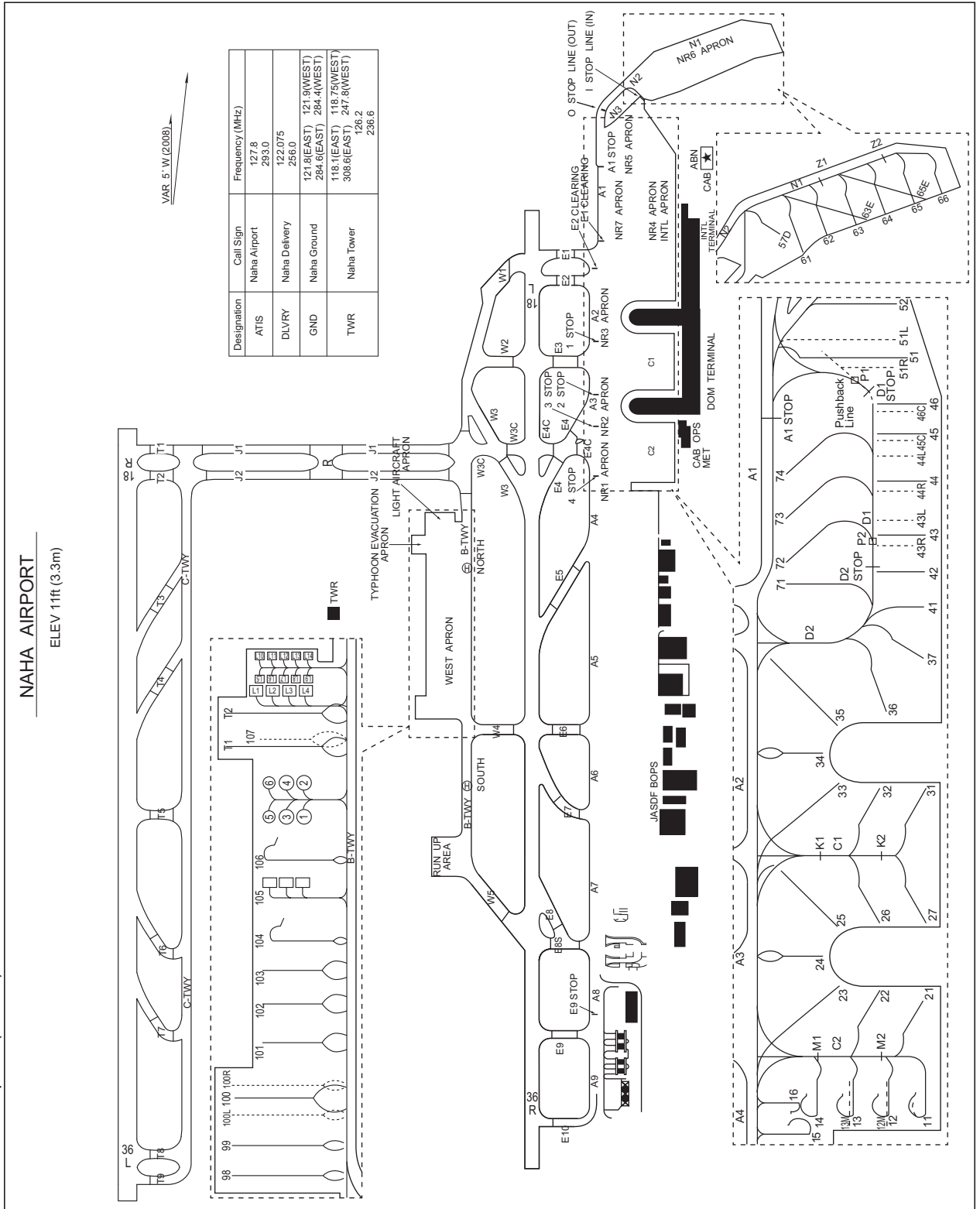


CHANGE : RTZL for RWY18L installed.

ROAH / NAHA

AD CHART

CHANGE: Stop line(M1,K1) relocated.

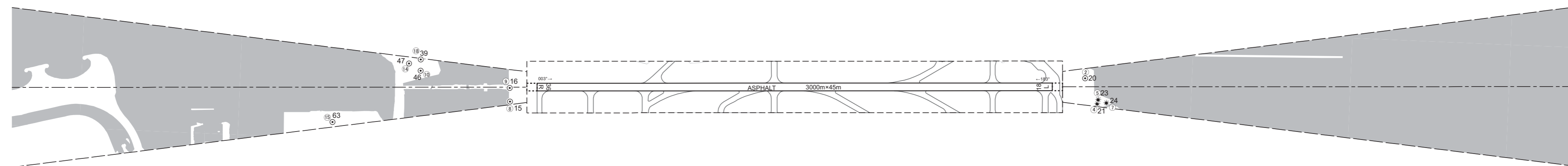
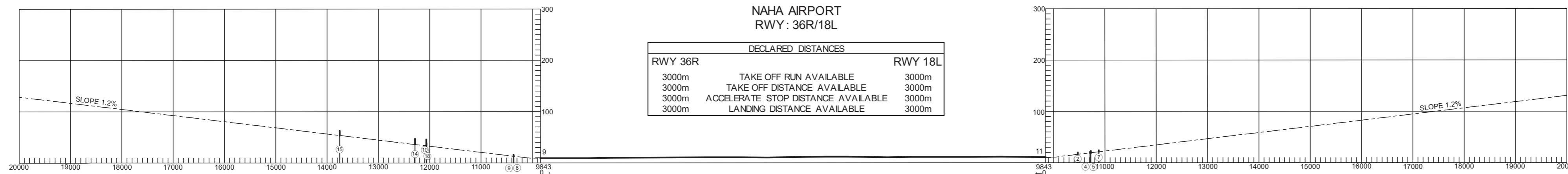


INTENTIONALLY LEFT BLANK

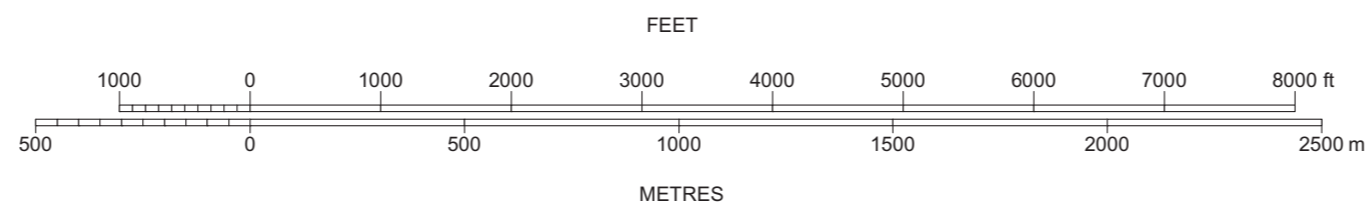
AERODROME OBSTACLE CHART-ICAO
TYPE A (OPERATING LIMITATIONS)

DIMENSIONS AND ELEVATIONS IN FEET BEARINGS ARE MAGNETIC
Transverse Mercator Projection

MAGNETIC VARIATION 6°W - FEB 2023



HORIZONTAL SCALE



LEGEND		AMENDMENT RECORD		
		Nr	DATE	ENTERED BY
①	IDENTIFICATION NUMBER			
⊙	POLE, TOWER, SPIRE, ANTENNA, ETC			
*	TREE			
— — —	RAILROAD			
— — —	TRANSMISSION LINE OR OVERHEAD CABLE			
△	TRIANGULATION POINT			
★	AERONAUTICAL GROUND LIGHT			
■	BUILDING OR LARGE STRUCTURE			
⋯	CONTOURS(1)			
*	OBSTRUCTION LIGHT			

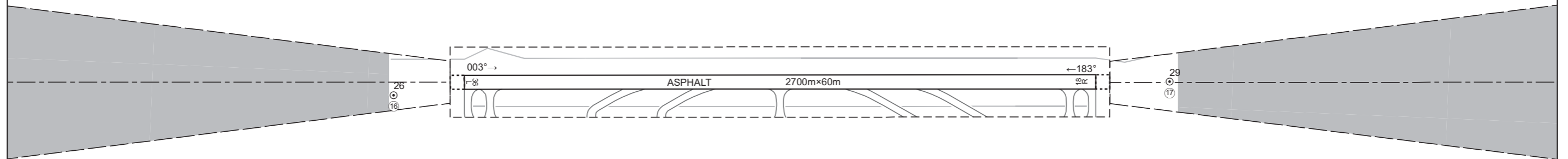
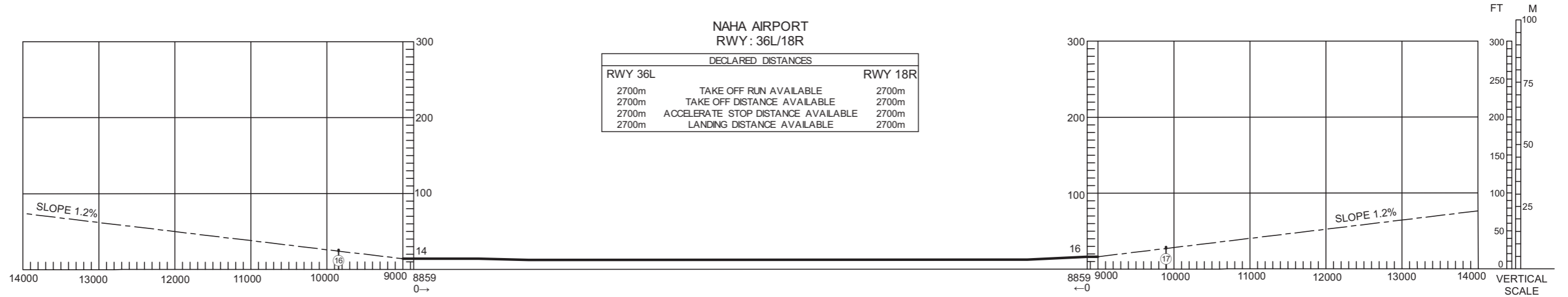
測量法に基づく国土地理院長承認(使用) R 4Jts 286

CHANGE : Update.

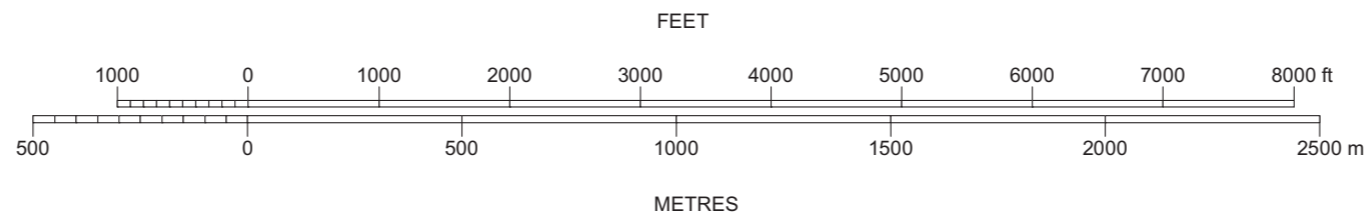
DIMENSIONS AND ELEVATIONS IN FEET BEARINGS ARE MAGNETIC
Transverse Mercator Projection

AERODROME OBSTACLE CHART-ICAO
TYPE A (OPERATING LIMITATIONS)

MAGNETIC VARIATION 6°W - FEB 2023



HORIZONTAL SCALE



LEGEND		AMENDMENT RECORD		
		Nr	DATE	ENTERED BY
①	IDENTIFICATION NUMBER			
⊙	POLE, TOWER, SPIRE, ANTENNA, ETC			
✳	TREE			
⋯	RAILROAD			
⋯	TRANSMISSION LINE OR OVERHEAD CABLE			
△	TRIANGULATION POINT			
★	AERONAUTICAL GROUND LIGHT			
■	BUILDING OR LARGE STRUCTURE			
⋯	CONTOURS(ft)			
✳	OBSTRUCTION LIGHT			
⋯	LEVEE			
⋯	RIVER			

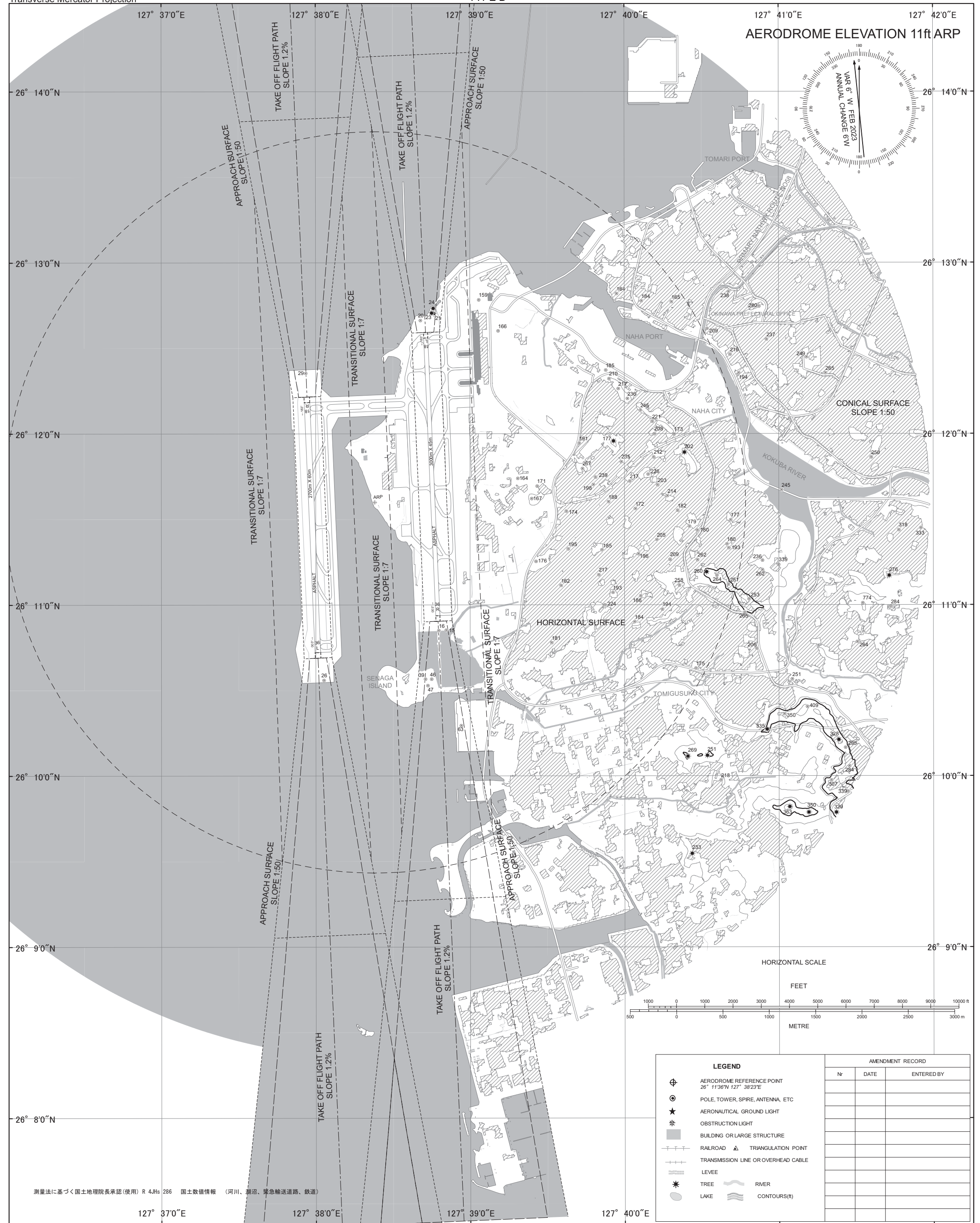
測量法に基づく国土地理院長承認(使用) R 4.Jhs 286

CHANGE : Update.

DIMENSIONS AND ELEVATIONS IN FEET BEARINGS ARE MAGNETIC
Transverse Mercator Projection

AERODROME OBSTACLE CHART-ICAO
TYPE B

AERODROME ELEVATION 11ft ARP



CHANGE : Update.

測量法に基づく国土地理院長承認(使用) R 4Jhs 286 国土数値情報 (河川、湖沼、緊急輸送道路、鉄道)

STANDARD DEPARTURE CHART-INSTRUMENT

ROAH/ NAHA

SID

NAHA NORTH FOUR DEPARTURE

RWY18L/18R: (Not established)
RWY36R : Climb RWY HDG to NHC 2.4DME,...
RWY36L : Climb RWY HDG to 500FT,...
...turn left, via NHC R341 to EISAR.

Note RWY36R/36L: 5.0% climb gradient required up to 500FT.

SCUBA TRANSITION

From over EISAR, via NHC R341 to 24.1DME, turn right to intercept NHC R344 to SCUBA.
Cross SCUBA at or above 4000FT.

LAVON ONE DEPARTURE

RWY18L : Climb RWY HDG to NHC 4.7DME, turn right, via NHC R196...
RWY18R : Climb RWY HDG to 600FT, turn right, via NHC R211...
... to intercept and proceed via NHC 15.0DME clockwise ARC to LAVON.

RWY36R : Climb RWY HDG to NHC 2.4DME, turn left, via NHC R341...
RWY36L : Climb RWY HDG to 500FT, turn left, via NHC R308...
...to intercept and proceed via NHC 15.0DME counterclockwise ARC to LAVON.

Note RWY36R/36L: 5.0% climb gradient required up to 500FT.

OLVAL ONE DEPARTURE

RWY18L : Climb RWY HDG to NHC 4.7DME, turn right, via NHC R196...
RWY18R : Climb RWY HDG to 600FT, turn right, via NHC R211...
... to intercept and proceed via NHC 15.0DME clockwise ARC to OLVAL.

RWY36R : Climb RWY HDG to NHC 2.4DME, turn left, via NHC R341...
RWY36L : Climb RWY HDG to 500FT, turn left, via NHC R308...
...to intercept and proceed via NHC 15.0DME counterclockwise ARC to OLVAL.

Note RWY36R/36L: 5.0% climb gradient required up to 500FT.

NAHA SOUTHWEST FOUR DEPARTURE

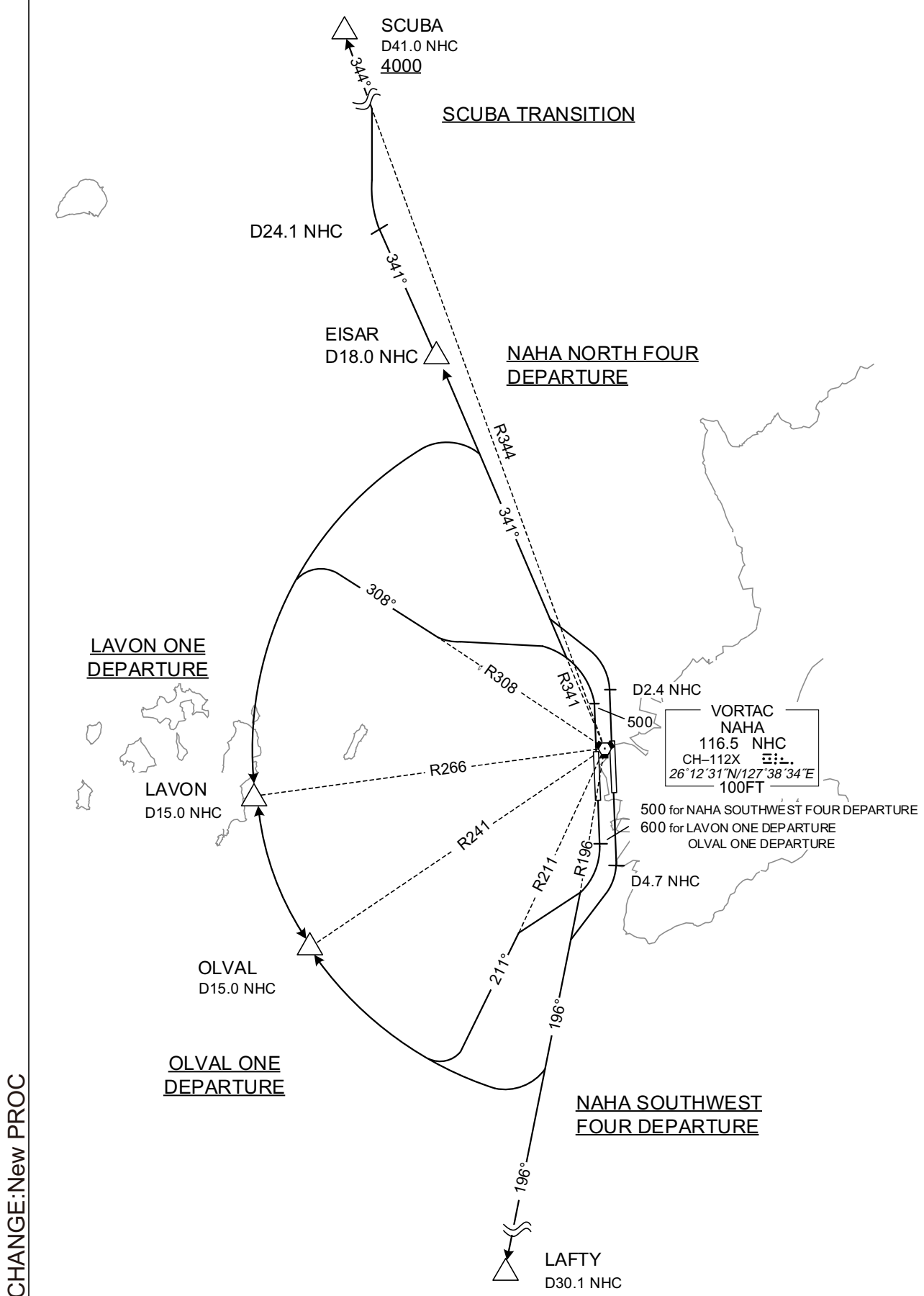
RWY18L : Climb RWY HDG to NHC 4.7DME,...
RWY18R : Climb RWY HDG to 500FT,...
... turn right, via NHC R196 to LAFTY.
RWY36R/36L: (Not established)

CHANGE:New PROC

STANDARD DEPARTURE CHART-INSTRUMENT

ROAH/NAHA

SID



CHANGE:New PROC

STANDARD DEPARTURE CHART-INSTRUMENT

ROAH/NAHA

RNAV SID

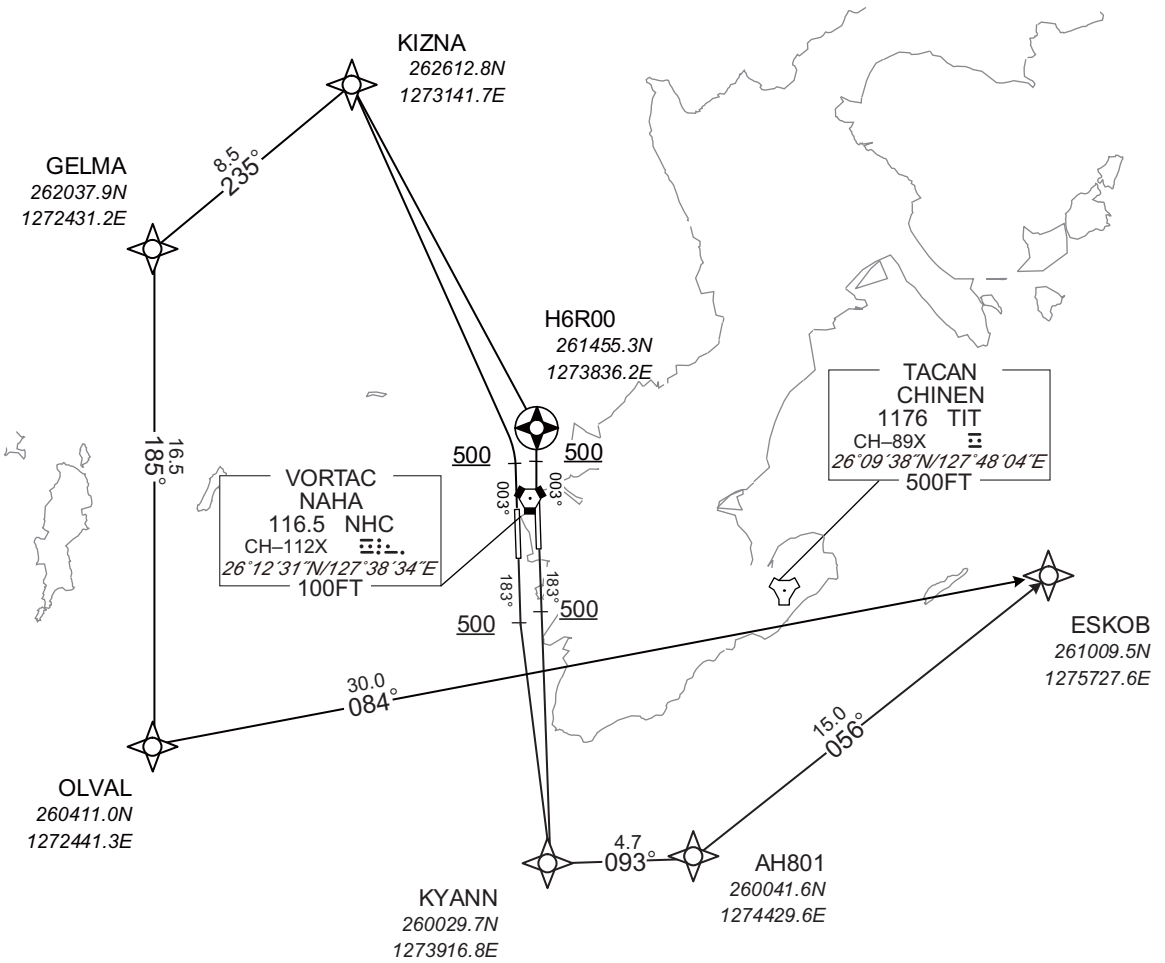
ESKOB THREE DEPARTURE

RNP1

Note GNSS required.

VAR 6°W

CHANGE : Navigation Specification(Basic RNP1 → RNP1).



- RWY18L : Climb on HDG183° at or above 500FT, direct to KYANN, to AH801, to ESKOB.
 - RWY18R : Climb on HDG183° at or above 500FT, direct to KYANN, to AH801, to ESKOB.
 - RWY36R : Climb on HDG003° at or above 500FT, direct to H6R00, turn left direct to KIZNA, to GELMA, to OLVAL, to ESKOB.
 - RWY36L : Climb on HDG003° at or above 500FT, turn left direct to KIZNA, to GELMA, to OLVAL, to ESKOB.
- NOTE RWY36R/36L : 5.0% climb gradient required up to 500FT.

STANDARD DEPARTURE CHART-INSTRUMENT

ROAH/ NAHA

RNAV SID

ESKOB THREE DEPARTURE

RWY18L

Serial Number	Path Descriptor	Waypoint Identifier	Fly Over	Course °M(°T)	Magnetic Variation	Distance (NM)	Turn Direction	Altitude (FT)	Speed (KIAS)	Vertical Angle	Navigation Specification
001	VA	-	-	183 (177.6)	-5.6	-	-	+500	-	-	RNP1
002	DF	KYANN	-	-	-5.6	-	-	-	-	-	RNP1
003	TF	AH801	-	093 (087.6)	-5.6	4.7	-	-	-	-	RNP1
004	TF	ESKOB	-	056 (050.9)	-5.6	15.0	-	-	-	-	RNP1

RWY18R

Serial Number	Path Descriptor	Waypoint Identifier	Fly Over	Course °M(°T)	Magnetic Variation	Distance (NM)	Turn Direction	Altitude (FT)	Speed (KIAS)	Vertical Angle	Navigation Specification
001	VA	-	-	183 (177.6)	-5.6	-	-	+500	-	-	RNP1
002	DF	KYANN	-	-	-5.6	-	-	-	-	-	RNP1
003	TF	AH801	-	093 (087.6)	-5.6	4.7	-	-	-	-	RNP1
004	TF	ESKOB	-	056 (050.9)	-5.6	15.0	-	-	-	-	RNP1

RWY36R

Serial Number	Path Descriptor	Waypoint Identifier	Fly Over	Course °M(°T)	Magnetic Variation	Distance (NM)	Turn Direction	Altitude (FT)	Speed (KIAS)	Vertical Angle	Navigation Specification
001	VA	-	-	003 (357.6)	-5.6	-	-	+500	-	-	RNP1
002	DF	H6R00	Y	-	-5.6	-	-	-	-	-	RNP1
003	DF	KIZNA	-	-	-5.6	-	L	-	-	-	RNP1
004	TF	GELMA	-	235 (229.0)	-5.6	8.5	-	-	-	-	RNP1
005	TF	OLVAL	-	185 (179.5)	-5.6	16.5	-	-	-	-	RNP1
006	TF	ESKOB	-	084 (078.4)	-5.6	30.0	-	-	-	-	RNP1

RWY36L

Serial Number	Path Descriptor	Waypoint Identifier	Fly Over	Course °M(°T)	Magnetic Variation	Distance (NM)	Turn Direction	Altitude (FT)	Speed (KIAS)	Vertical Angle	Navigation Specification
001	VA	-	-	003 (357.6)	-5.6	-	-	+500	-	-	RNP1
002	DF	KIZNA	-	-	-5.6	-	L	-	-	-	RNP1
003	TF	GELMA	-	235 (229.0)	-5.6	8.5	-	-	-	-	RNP1
004	TF	OLVAL	-	185 (179.5)	-5.6	16.5	-	-	-	-	RNP1
005	TF	ESKOB	-	084 (078.4)	-5.6	30.0	-	-	-	-	RNP1

CHANGE : Navigation Specification(Basic RNP1 → RNP1).

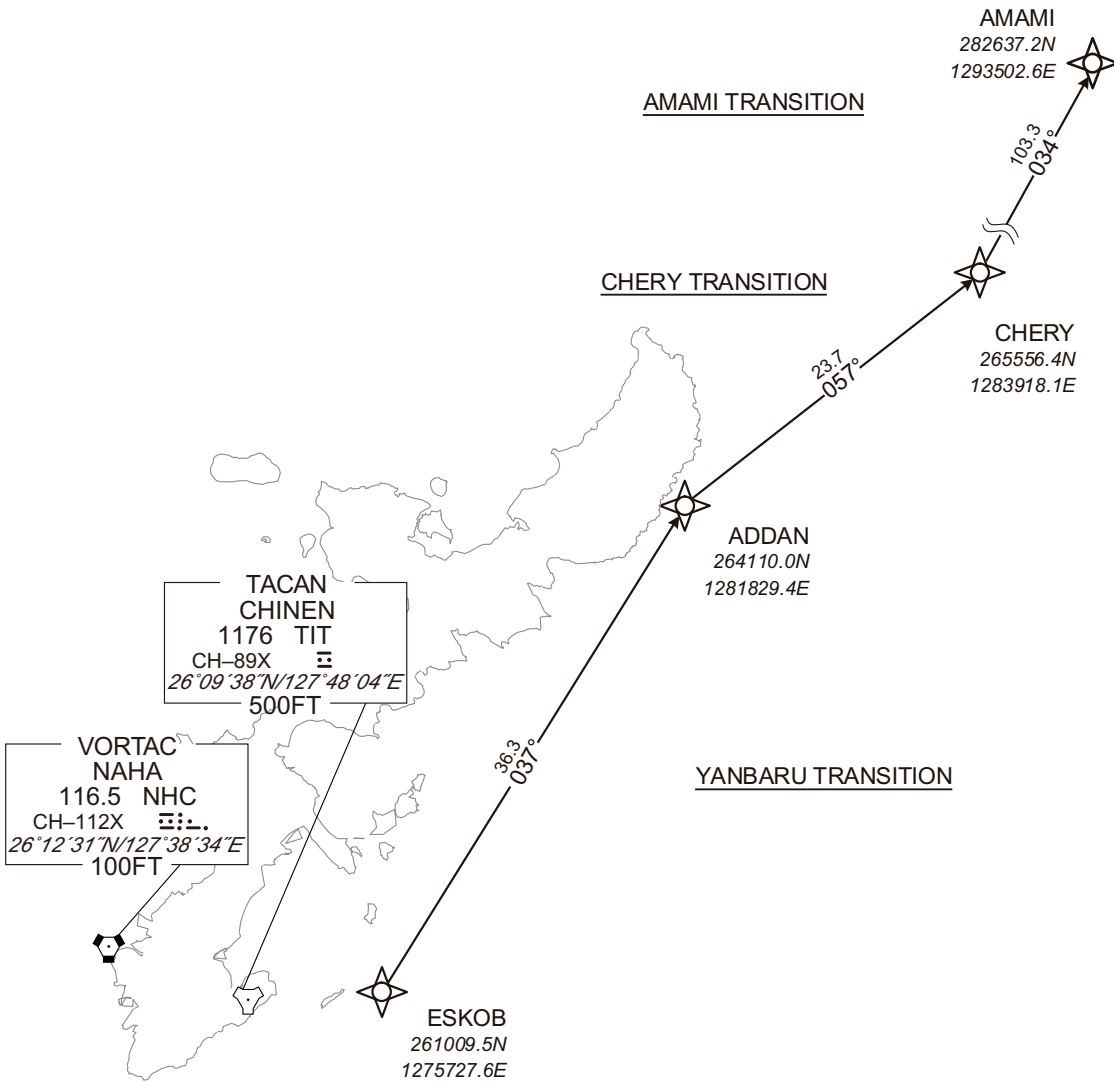
STANDARD DEPARTURE CHART-INSTRUMENT

ROAH/NAHA RNAV TRANSITION

AMAMI TRANSITION / CHERY TRANSITION / YANBARU TRANSITION	RNP1
--	------

Note GNSS required.

VAR 6°W



CHANGE : Navigation Specification(Basic RNP1 → RNP1).

- AMAMI TRANSITION
From ESKOB, to ADDAN, to CHERY, to AMAMI.
- CHERY TRANSITION
From ESKOB, to ADDAN, to CHERY.
- YANBARU TRANSITION
From ESKOB, to ADDAN.

STANDARD DEPARTURE CHART-INSTRUMENT

ROAH / NAHA

RNAV TRANSITION

AMAMI TRANSITION

Serial Number	Path Descriptor	Waypoint Identifier	Fly Over	Course °M(°T)	Magnetic Variation	Distance (NM)	Turn Direction	Altitude (FT)	Speed (KIAS)	Vertical Angle	Navigation Specification
001	IF	ESKOB	-	-	-5.6	-	-	-	-	-	RNP1
002	TF	ADDAN	-	037 (031.2)	-5.6	36.3	-	-	-	-	RNP1
003	TF	CHERY	-	057 (051.4)	-5.6	23.7	-	-	-	-	RNP1
004	TF	AMAMI	-	034 (028.3)	-5.6	103.3	-	-	-	-	RNP1

CHERY TRANSITION

Serial Number	Path Descriptor	Waypoint Identifier	Fly Over	Course °M(°T)	Magnetic Variation	Distance (NM)	Turn Direction	Altitude (FT)	Speed (KIAS)	Vertical Angle	Navigation Specification
001	IF	ESKOB	-	-	-5.6	-	-	-	-	-	RNP1
002	TF	ADDAN	-	037 (031.2)	-5.6	36.3	-	-	-	-	RNP1
003	TF	CHERY	-	057 (051.4)	-5.6	23.7	-	-	-	-	RNP1

YANBARU TRANSITION

Serial Number	Path Descriptor	Waypoint Identifier	Fly Over	Course °M(°T)	Magnetic Variation	Distance (NM)	Turn Direction	Altitude (FT)	Speed (KIAS)	Vertical Angle	Navigation Specification
001	IF	ESKOB	-	-	-5.6	-	-	-	-	-	RNP1
002	TF	ADDAN	-	037 (031.2)	-5.6	36.3	-	-	-	-	RNP1

CHANGE : Navigation Specification(Basic RNP1 → RNP1).

STANDARD DEPARTURE CHART-INSTRUMENT

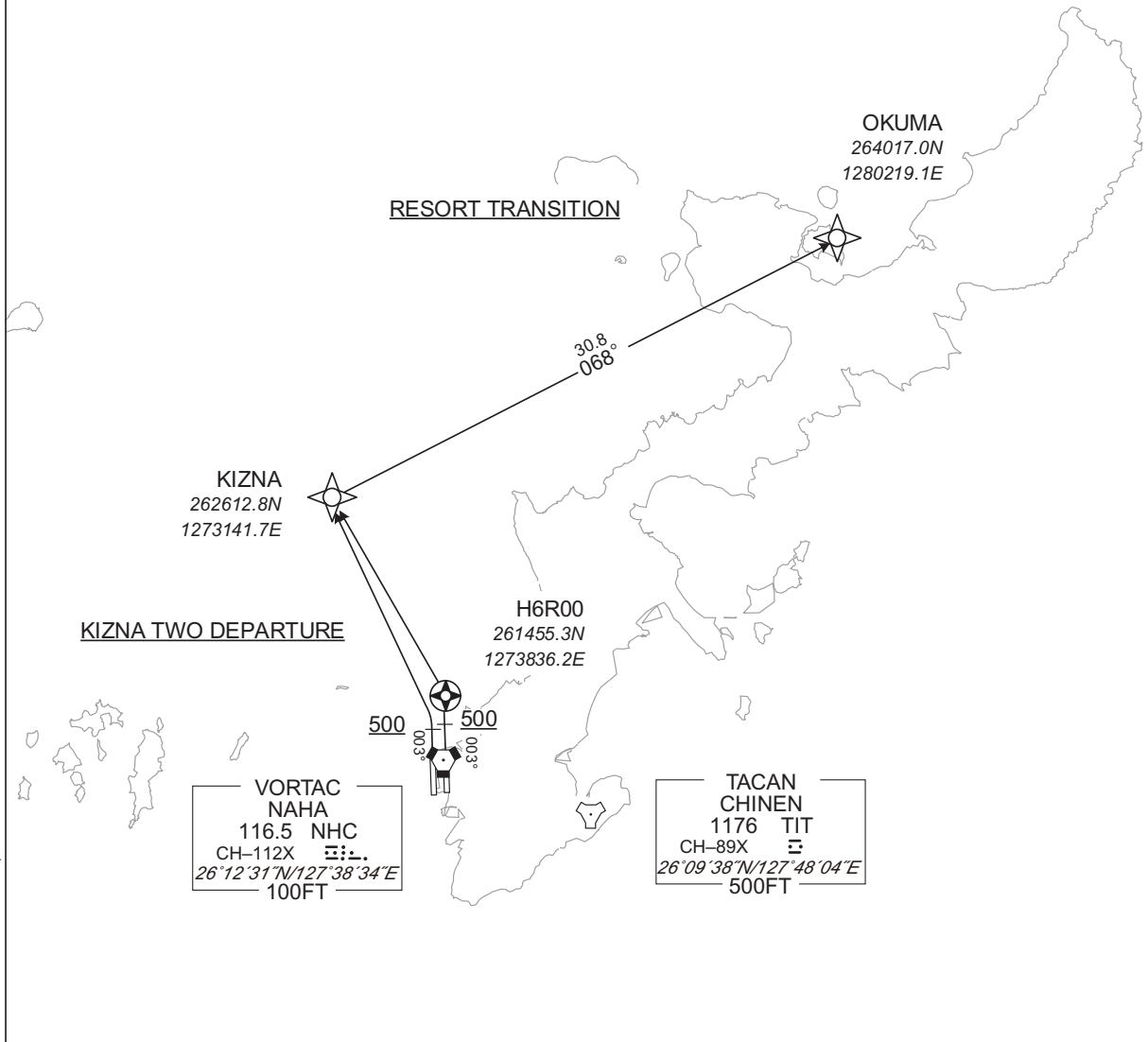
ROAH/NAHA

RNAV SID and TRANSITION

KIZNA TWO DEPARTURE RESORT TRANSITION	RNP1
--	------

Note GNSS required.

VAR 6°W



CHANGE : Navigation Specification(Basic RNP1 → RNP1).

KIZNA TWO DEPARTURE

- RWY18L/18R: (Not established)
- RWY36R : Climb on HDG003° at or above 500FT, direct to H6R00, turn left direct to KIZNA .
- RWY36L : Climb on HDG003° at or above 500FT, turn left direct to KIZNA .

NOTE RWY36R/36L: 5.0% climb gradient required up to 500FT.

RESORT TRANSITION

From KIZNA, to OKUMA.

STANDARD DEPARTURE CHART-INSTRUMENT

ROAH/ NAHA

RNAV SID and TRANSITION

KIZNA TWO DEPARTURE

RWY36R

Serial Number	Path Descriptor	Waypoint Identifier	Fly Over	Course °M(°T)	Magnetic Variation	Distance (NM)	Turn Direction	Altitude (FT)	Speed (KIAS)	Vertical Angle	Navigation Specification
001	VA	-	-	003 (357.6)	-5.6	-	-	+500	-	-	RNP1
002	DF	H6R00	Y	-	-5.6	-	-	-	-	-	RNP1
003	DF	KIZNA	-	-	-5.6	-	L	-	-	-	RNP1

RWY36L

Serial Number	Path Descriptor	Waypoint Identifier	Fly Over	Course °M(°T)	Magnetic Variation	Distance (NM)	Turn Direction	Altitude (FT)	Speed (KIAS)	Vertical Angle	Navigation Specification
001	VA	-	-	003 (357.6)	-5.6	-	-	+500	-	-	RNP1
002	DF	KIZNA	-	-	-5.6	-	L	-	-	-	RNP1

RESORT TRANSITION

Serial Number	Path Descriptor	Waypoint Identifier	Fly Over	Course °M(°T)	Magnetic Variation	Distance (NM)	Turn Direction	Altitude (FT)	Speed (KIAS)	Vertical Angle	Navigation Specification
001	IF	KIZNA	-	-	-5.6	-	-	-	-	-	RNP1
002	TF	OKUMA	-	068 (062.7)	-5.6	30.8	-	-	-	-	RNP1

CHANGE : Navigation Specification(Basic RNP1 → RNP1).

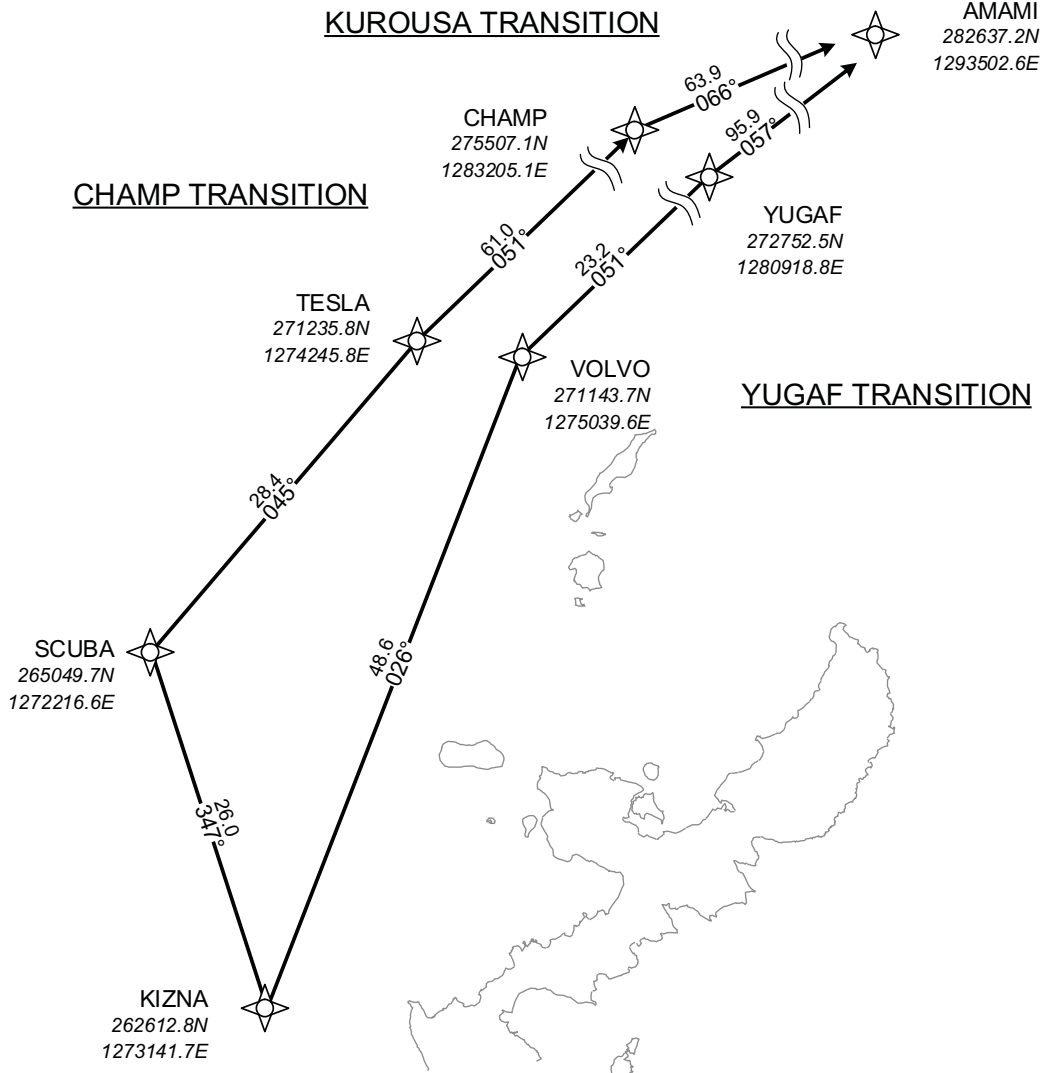
STANDARD DEPARTURE CHART-INSTRUMENT

ROAH/NAHA RNAV TRANSITION

KUROUSA TRANSITION CHAMP TRANSITION YUGAF TRANSITION	RNP1
--	------

Note GNSS required.

VAR 6°W



CHANGE : Navigation Specification(Basic RNP1 → RNP1).

KUROUSA TRANSITION
From KIZNA, to SCUBA, to TESLA, to CHAMP, to AMAMI.

CHAMP TRANSITION
From KIZNA, to SCUBA, to TESLA, to CHAMP.

YUGAF TRANSITION
From KIZNA, to VOLVO, to YUGAF, to AMAMI.

STANDARD DEPARTURE CHART-INSTRUMENT

ROAH / NAHA

RNAV TRANSITION

KUROUSA TRANSITION

Serial Number	Path Descriptor	Waypoint Identifier	Fly Over	Course °M(°T)	Magnetic Variation	Distance (NM)	Turn Direction	Altitude (FT)	Speed (KIAS)	Vertical Angle	Navigation Specification
001	IF	KIZNA	-	-	-5.6	-	-	-	-	-	RNP1
002	TF	SCUBA	-	347 (341.2)	-5.6	26.0	-	-	-	-	RNP1
003	TF	TESLA	-	045 (039.9)	-5.6	28.4	-	-	-	-	RNP1
004	TF	CHAMP	-	051 (045.6)	-5.6	61.0	-	-	-	-	RNP1
005	TF	AMAMI	-	066 (060.2)	-5.6	63.9	-	-	-	-	RNP1

CHAMP TRANSITION

Serial Number	Path Descriptor	Waypoint Identifier	Fly Over	Course °M(°T)	Magnetic Variation	Distance (NM)	Turn Direction	Altitude (FT)	Speed (KIAS)	Vertical Angle	Navigation Specification
001	IF	KIZNA	-	-	-5.6	-	-	-	-	-	RNP1
002	TF	SCUBA	-	347 (341.2)	-5.6	26.0	-	-	-	-	RNP1
003	TF	TESLA	-	045 (039.9)	-5.6	28.4	-	-	-	-	RNP1
004	TF	CHAMP	-	051 (045.6)	-5.6	61.0	-	-	-	-	RNP1

YUGAF TRANSITION

Serial Number	Path Descriptor	Waypoint Identifier	Fly Over	Course °M(°T)	Magnetic Variation	Distance (NM)	Turn Direction	Altitude (FT)	Speed (KIAS)	Vertical Angle	Navigation Specification
001	IF	KIZNA	-	-	-5.6	-	-	-	-	-	RNP1
002	TF	VOLVO	-	026 (020.3)	-5.6	48.6	-	-	-	-	RNP1
003	TF	YUGAF	-	051 (045.7)	-5.6	23.2	-	-	-	-	RNP1
004	TF	AMAMI	-	057 (051.9)	-5.6	95.9	-	-	-	-	RNP1

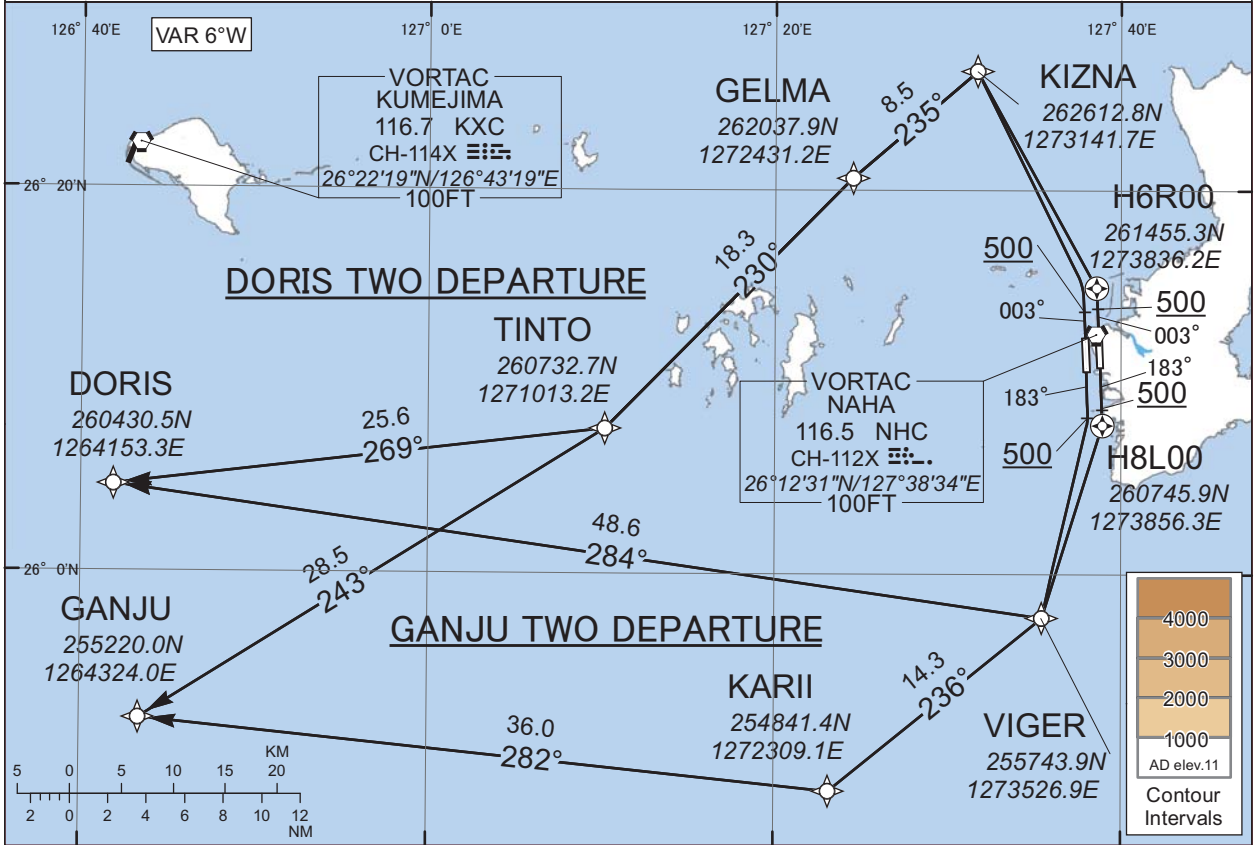
CHANGE : Navigation Specification(Basic RNP1 → RNP1).

STANDARD DEPARTURE CHART-INSTRUMENT

ROAH / NAHA RNAV SID

DORIS TWO DEPARTURE / GANJU TWO DEPARTURE	RNP1
---	------

Note GNSS required.



DORIS TWO DEPARTURE

- RWY18L : Climb on HDG183° at or above 500FT, direct to H8L00, turn right direct to VIGER, to DORIS.
- RWY18R : Climb on HDG183° at or above 500FT, turn right direct to VIGER, to DORIS.
- RWY36R : Climb on HDG003° at or above 500FT, direct to H6R00, turn left direct to KIZNA, to GELMA, to TINTO, to DORIS.
- RWY36L : Climb on HDG003° at or above 500FT, turn left direct to KIZNA, to GELMA, to TINTO, to DORIS.

Note RWY36R/36L : 5.0% climb gradient required up to 500FT.

GANJU TWO DEPARTURE

- RWY18L : Climb on HDG183° at or above 500FT, direct to H8L00, turn right direct to VIGER, to KARII, to GANJU.
- RWY18R : Climb on HDG183° at or above 500FT, turn right direct to VIGER, to KARII, to GANJU.
- RWY36R : Climb on HDG003° at or above 500FT, direct to H6R00, turn left direct to KIZNA, to GELMA, to TINTO, to GANJU.
- RWY36L : Climb on HDG003° at or above 500FT, turn left direct to KIZNA, to GELMA, to TINTO, to GANJU.

Note RWY36R/36L : 5.0% climb gradient required up to 500FT.

CHANGE : Navigation Specification(Basic RNP1 → RNP1).

STANDARD DEPARTURE CHART-INSTRUMENT

ROAH / NAHA

RNAV SID

DORIS TWO DEPARTURE

RWY18L

Serial Number	Path Descriptor	Waypoint Identifier	Fly Over	Course °M(°T)	Magnetic Variation	Distance (NM)	Turn Direction	Altitude (FT)	Speed (KIAS)	Vertical Angle	Navigation Specification
001	VA	-	-	183 (177.6)	-5.6	-	-	+500	-	-	RNP1
002	DF	H8L00	Y	-	-5.6	-	-	-	-	-	RNP1
003	DF	VIGER	-	-	-5.6	-	R	-	-	-	RNP1
004	TF	DORIS	-	284 (278.2)	-5.6	48.6	-	-	-	-	RNP1

RWY18R

Serial Number	Path Descriptor	Waypoint Identifier	Fly Over	Course °M(°T)	Magnetic Variation	Distance (NM)	Turn Direction	Altitude (FT)	Speed (KIAS)	Vertical Angle	Navigation Specification
001	VA	-	-	183 (177.6)	-5.6	-	-	+500	-	-	RNP1
002	DF	VIGER	-	-	-5.6	-	R	-	-	-	RNP1
003	TF	DORIS	-	284 (278.2)	-5.6	48.6	-	-	-	-	RNP1

RWY36R

Serial Number	Path Descriptor	Waypoint Identifier	Fly Over	Course °M(°T)	Magnetic Variation	Distance (NM)	Turn Direction	Altitude (FT)	Speed (KIAS)	Vertical Angle	Navigation Specification
001	VA	-	-	003 (357.6)	-5.6	-	-	+500	-	-	RNP1
002	DF	H6R00	Y	-	-5.6	-	-	-	-	-	RNP1
003	DF	KIZNA	-	-	-5.6	-	L	-	-	-	RNP1
004	TF	GELMA	-	235 (229.0)	-5.6	8.5	-	-	-	-	RNP1
005	TF	TINTO	-	230 (224.5)	-5.6	18.3	-	-	-	-	RNP1
006	TF	DORIS	-	269 (263.3)	-5.6	25.6	-	-	-	-	RNP1

RWY36L

Serial Number	Path Descriptor	Waypoint Identifier	Fly Over	Course °M(°T)	Magnetic Variation	Distance (NM)	Turn Direction	Altitude (FT)	Speed (KIAS)	Vertical Angle	Navigation Specification
001	VA	-	-	003 (357.6)	-5.6	-	-	+500	-	-	RNP1
002	DF	KIZNA	-	-	-5.6	-	L	-	-	-	RNP1
003	TF	GELMA	-	235 (229.0)	-5.6	8.5	-	-	-	-	RNP1
004	TF	TINTO	-	230 (224.5)	-5.6	18.3	-	-	-	-	RNP1
005	TF	DORIS	-	269 (263.3)	-5.6	25.6	-	-	-	-	RNP1

CHANGE : Navigation Specification(Basic RNP1 → RNP1).

STANDARD DEPARTURE CHART-INSTRUMENT

ROAH / NAHA

RNAV SID

GANJU TWO DEPARTURE

RWY18L

Serial Number	Path Descriptor	Waypoint Identifier	Fly Over	Course °M(°T)	Magnetic Variation	Distance (NM)	Turn Direction	Altitude (FT)	Speed (KIAS)	Vertical Angle	Navigation Specification
001	VA	-	-	183 (177.6)	-5.6	-	-	+500	-	-	RNP1
002	DF	H8L00	Y	-	-5.6	-	-	-	-	-	RNP1
003	DF	VIGER	-	-	-5.6	-	R	-	-	-	RNP1
004	TF	KARII	-	236 (230.8)	-5.6	14.3	-	-	-	-	RNP1
005	TF	GANJU	-	282 (276.0)	-5.6	36.0	-	-	-	-	RNP1

RWY18R

Serial Number	Path Descriptor	Waypoint Identifier	Fly Over	Course °M(°T)	Magnetic Variation	Distance (NM)	Turn Direction	Altitude (FT)	Speed (KIAS)	Vertical Angle	Navigation Specification
001	VA	-	-	183 (177.6)	-5.6	-	-	+500	-	-	RNP1
002	DF	VIGER	-	-	-5.6	-	R	-	-	-	RNP1
003	TF	KARII	-	236 (230.8)	-5.6	14.3	-	-	-	-	RNP1
004	TF	GANJU	-	282 (276.0)	-5.6	36.0	-	-	-	-	RNP1

RWY36R

Serial Number	Path Descriptor	Waypoint Identifier	Fly Over	Course °M(°T)	Magnetic Variation	Distance (NM)	Turn Direction	Altitude (FT)	Speed (KIAS)	Vertical Angle	Navigation Specification
001	VA	-	-	003 (357.6)	-5.6	-	-	+500	-	-	RNP1
002	DF	H6R00	Y	-	-5.6	-	-	-	-	-	RNP1
003	DF	KIZNA	-	-	-5.6	-	L	-	-	-	RNP1
004	TF	GELMA	-	235 (229.0)	-5.6	8.5	-	-	-	-	RNP1
005	TF	TINTO	-	230 (224.5)	-5.6	18.3	-	-	-	-	RNP1
006	TF	GANJU	-	243 (237.8)	-5.6	28.5	-	-	-	-	RNP1

RWY36L

Serial Number	Path Descriptor	Waypoint Identifier	Fly Over	Course °M(°T)	Magnetic Variation	Distance (NM)	Turn Direction	Altitude (FT)	Speed (KIAS)	Vertical Angle	Navigation Specification
001	VA	-	-	003 (357.6)	-5.6	-	-	+500	-	-	RNP1
002	DF	KIZNA	-	-	-5.6	-	L	-	-	-	RNP1
003	TF	GELMA	-	235 (229.0)	-5.6	8.5	-	-	-	-	RNP1
004	TF	TINTO	-	230 (224.5)	-5.6	18.3	-	-	-	-	RNP1
005	TF	GANJU	-	243 (237.8)	-5.6	28.5	-	-	-	-	RNP1

CHANGE : Navigation Specification(Basic RNP1 → RNP1).

STANDARD ARRIVAL CHART-INSTRUMENT

ROAH/NAHA

STAR

SCUBA ARRIVAL

From over SCUBA, via NHC R344 to 28.1 DME, turn right to intercept and proceed via NHC R341 to EISAR.
Cross NHC R344/28.1DME at or above 3000FT, cross EISAR at or above 2000FT.

LAVON ARRIVAL

From over LAVON, via NHC 15.0DME counterclockwise ARC to VIGER.
Cross VIGER at or above 2000FT.

(When using NHC TACAN only)

From over LAVON at or above 5000FT, via NHC 15.0DME counterclockwise ARC to VIGER.

Cross VIGER at or above 4400FT.

LAFTY ARRIVAL

From over LAFTY, via NHC R196 to VIGER.
Cross VIGER at or above 2000FT.

(When using NHC TACAN only)

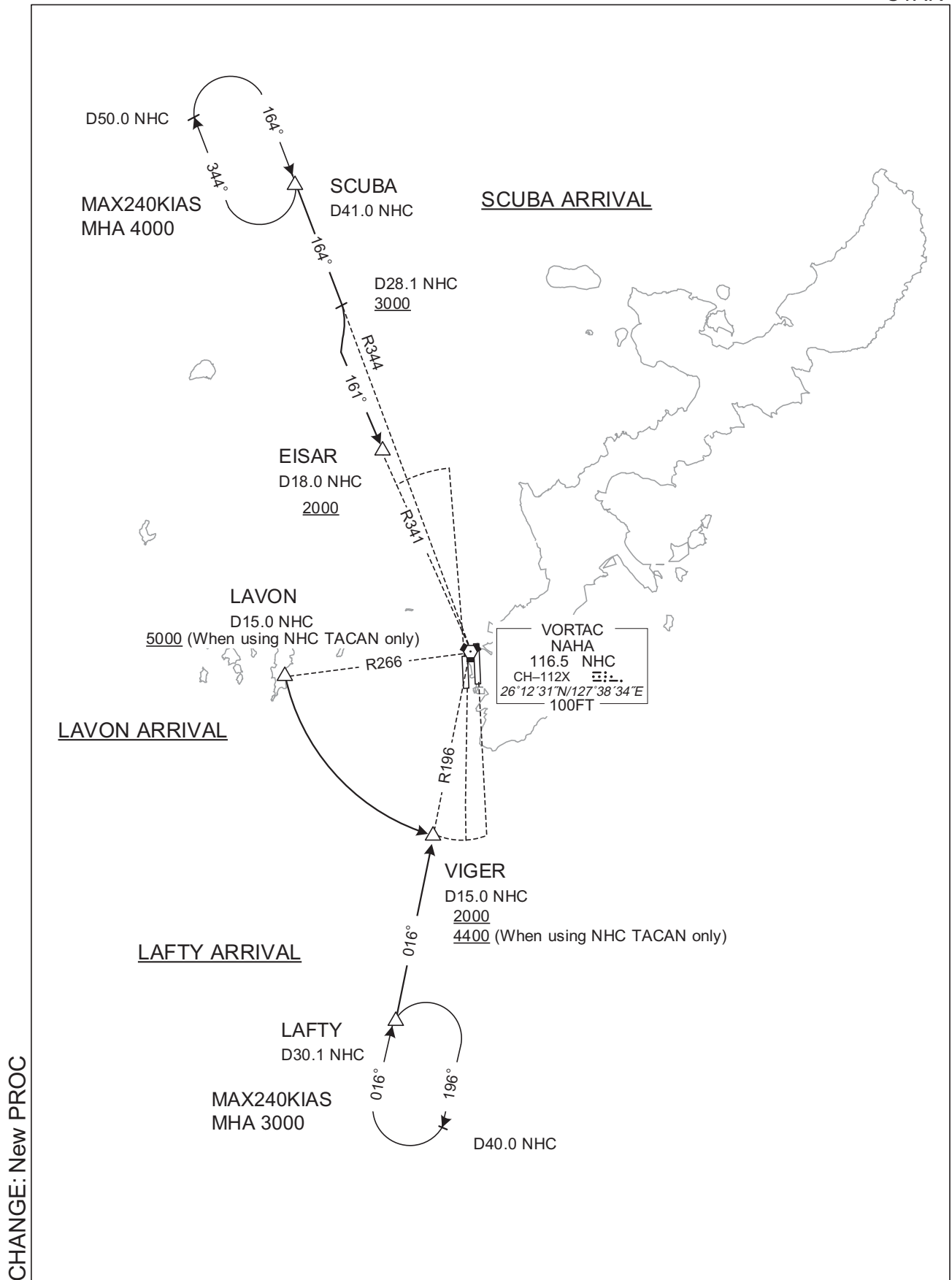
From over LAFTY, via NHC R196 to VIGER.
Cross VIGER at or above 4400FT.

CHANGE: New PROC

STANDARD ARRIVAL CHART-INSTRUMENT

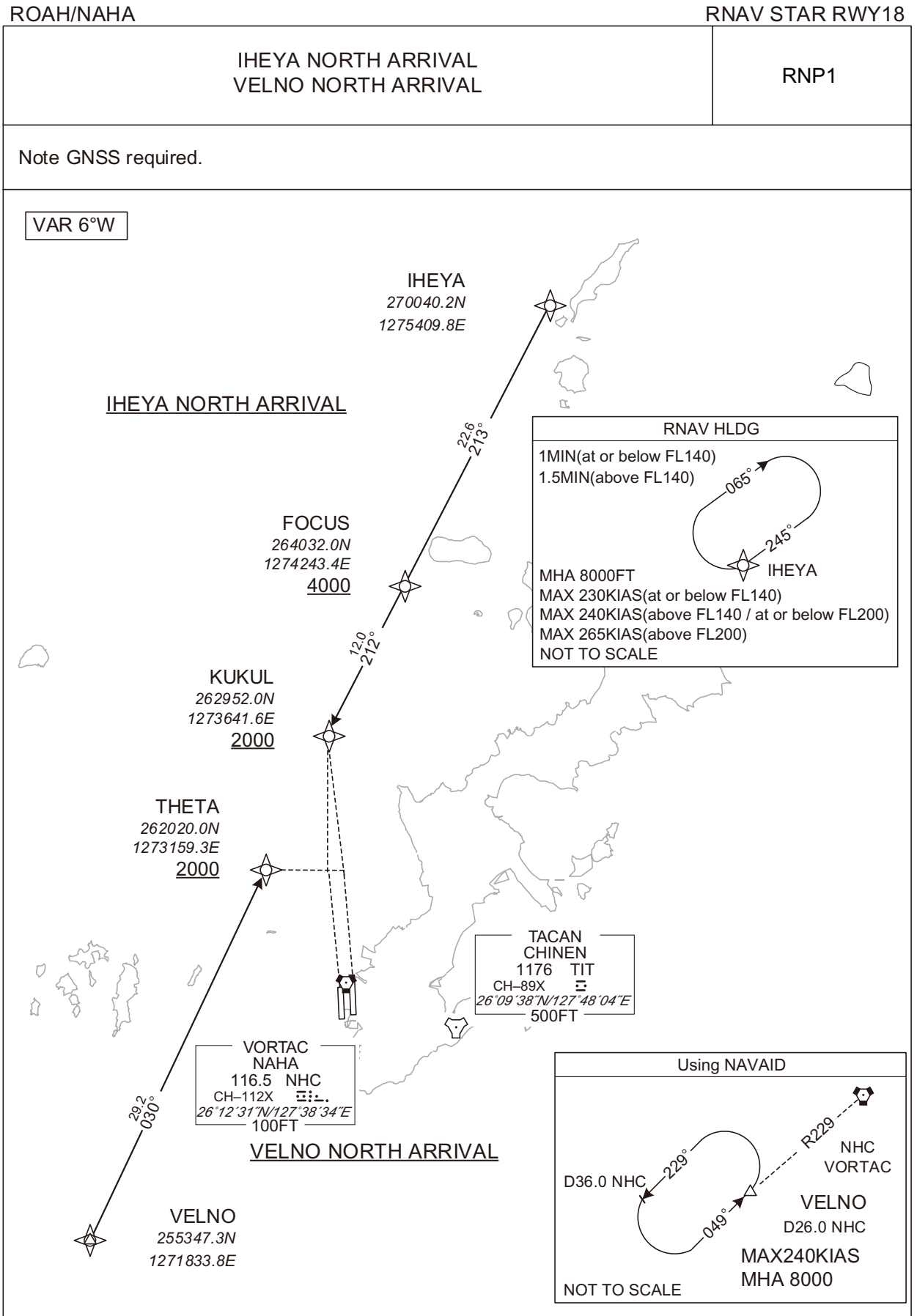
ROAH/NAHA

STAR



CHANGE: New PROC

STANDARD ARRIVAL CHART-INSTRUMENT



STANDARD ARRIVAL CHART-INSTRUMENT

ROAH / NAHA

RNAV STAR RWY18

IHEYA NORTH ARRIVAL

From IHEYA, to FOCUS at or above 4000FT, to KUKUL at or above 2000FT.

Serial Number	Path Descriptor	Waypoint Identifier	Fly Over	Course °M(°T)	Magnetic Variation	Distance (NM)	Turn Direction	Altitude (FT)	Speed (KIAS)	Vertical Angle	Navigation Specification
001	IF	IHEYA	-	-	-5.6	-	-	-	-	-	RNP1
002	TF	FOCUS	-	213 (206.9)	-5.6	22.6	-	+4000	-	-	RNP1
003	TF	KUKUL	-	212 (206.8)	-5.6	12.0	-	+2000	-	-	RNP1

Path	Waypoint Identifier	Inbound Course °M(°T)	Magnetic Variation	Outbound Time (MIN)	Turn Direction	Minimum Altitude (FT)	Maximum Altitude (FT)	Speed (KIAS)	Navigation Specification
Hold	IHEYA	245 (239.1)	-5.8	1.0 (-14000) 1.5 (+14001)	R	8000	-	-230 (-14000) -240 (14001-20000) -265 (+20001)	RNP1

VELNO NORTH ARRIVAL

From VELNO, to THETA at or above 2000FT.

Serial Number	Path Descriptor	Waypoint Identifier	Fly Over	Course °M(°T)	Magnetic Variation	Distance (NM)	Turn Direction	Altitude (FT)	Speed (KIAS)	Vertical Angle	Navigation Specification
001	IF	VELNO	-	-	-5.6	-	-	-	-	-	RNP1
002	TF	THETA	-	030 (024.4)	-5.6	29.2	-	+2000	-	-	RNP1

CHANGE : Navigation Specification(Basic RNP1 → RNP1).

STANDARD ARRIVAL CHART-INSTRUMENT

ROAH/NAHA

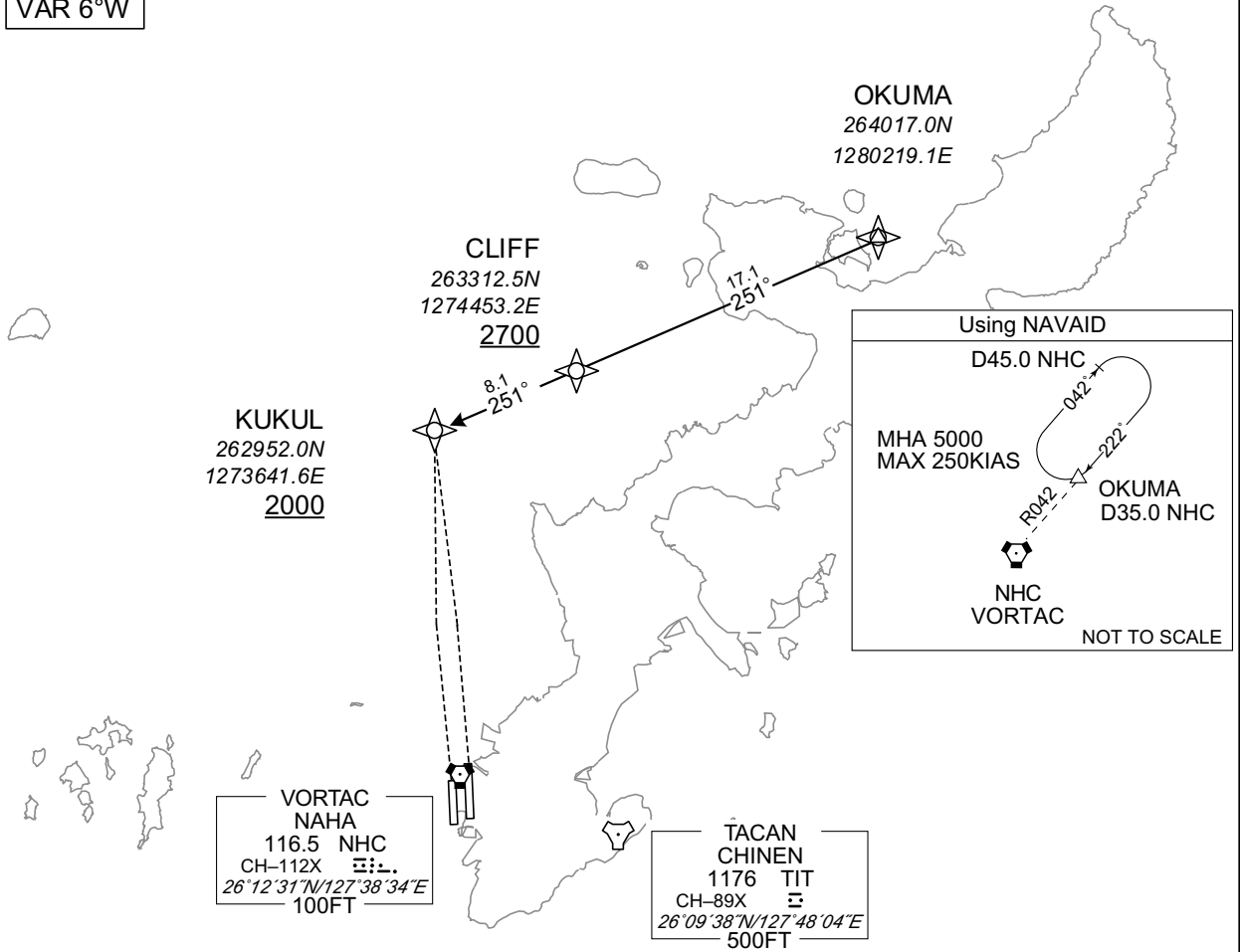
RNAV STAR RWY18

RESORT NORTH ARRIVAL

RNP1

Note 1) GNSS required.
2) CDO only.

VAR 6°W



From OKUMA, to CLIFF at or above 2700FT, to KUKUL at or above 2000FT.

CHANGE : Navigation Specification(Basic RNP1 → RNP1).

Serial Number	Path Descriptor	Waypoint Identifier	Fly Over	Course °M(°T)	Magnetic Variation	Distance (NM)	Turn Direction	Altitude (FT)	Speed (KIAS)	Vertical Angle	Navigation Specification
001	IF	OKUMA	-	-	-5.6	-	-	-	-	-	RNP1
002	TF	CLIFF	-	251 (245.7)	-5.6	17.1	-	+2700	-	-	RNP1
003	TF	KUKUL	-	251 (245.5)	-5.6	8.1	-	+2000	-	-	RNP1

STANDARD ARRIVAL CHART-INSTRUMENT

ROAH/NAHA

RNAV STAR RWY18

GUPTI NORTH ARRIVAL
ENTOK NORTH ARRIVAL

RNP1

Note 1) GNSS required. 2) CDO only.

VAR 6°W

GUPTI NORTH ARRIVAL

GUPTI
290124.5N
1280918.7E
FL200

IHEYA
270040.2N
1275409.8E

KUKUL
262952.0N
1273641.6E
2000

ENTOK
261914.3N
1245953.8E
FL170

YEEZY
262018.1N
1265032.5E
2100

THETA
262020.0N
1273159.3E
2000

ENTOK NORTH ARRIVAL

VORTAC
NAHA
116.5 NHC
CH-112X
26°12'31"N/127°38'34"E
100FT

TACAN
CHINEN
1176 TIT
CH-89X
26°09'38"N/127°48'04"E
500FT

CHANGE : Navigation Specification(Basic RNP1 → RNP1).

STANDARD ARRIVAL CHART-INSTRUMENT

ROAH / NAHA

RNAV STAR RWY18

GUPTI NORTH ARRIVAL

From GUPTI at or above FL200, to IHEYA, to KUKUL at or above 2000FT.

Serial Number	Path Descriptor	Waypoint Identifier	Fly Over	Course °M(°T)	Magnetic Variation	Distance (NM)	Turn Direction	Altitude (FT)	Speed (KIAS)	Vertical Angle	Navigation Specification
001	IF	GUPTI	-	-	-5.6	-	-	+FL200	-	-	RNP1
002	TF	IHEYA	-	192 (186.4)	-5.6	121.6	-	-	-	-	RNP1
003	TF	KUKUL	-	213 (206.9)	-5.6	34.6	-	+2000	-	-	RNP1

ENTOK NORTH ARRIVAL

From ENTOK at or above FL170, to YEEZY at or above 2100FT, to THETA at or above 2000FT.

Serial Number	Path Descriptor	Waypoint Identifier	Fly Over	Course °M(°T)	Magnetic Variation	Distance (NM)	Turn Direction	Altitude (FT)	Speed (KIAS)	Vertical Angle	Navigation Specification
001	IF	ENTOK	-	-	-5.6	-	-	+FL170	-	-	RNP1
002	TF	YEEZY	-	095 (089.0)	-5.6	99.2	-	+2100	-	-	RNP1
003	TF	THETA	-	095 (089.8)	-5.6	37.2	-	+2000	-	-	RNP1

CHANGE : Navigation Specification(Basic RNP1 → RNP1).

STANDARD ARRIVAL CHART-INSTRUMENT

ROAH/NAHA

RNAV STAR RWY36

IHEYA SOUTH ARRIVAL
VELNO SOUTH ARRIVAL

RNP1

Note GNSS required.

VAR 6°W

RNAV HLDG

1MIN(at or below FL140)
1.5MIN(above FL140)

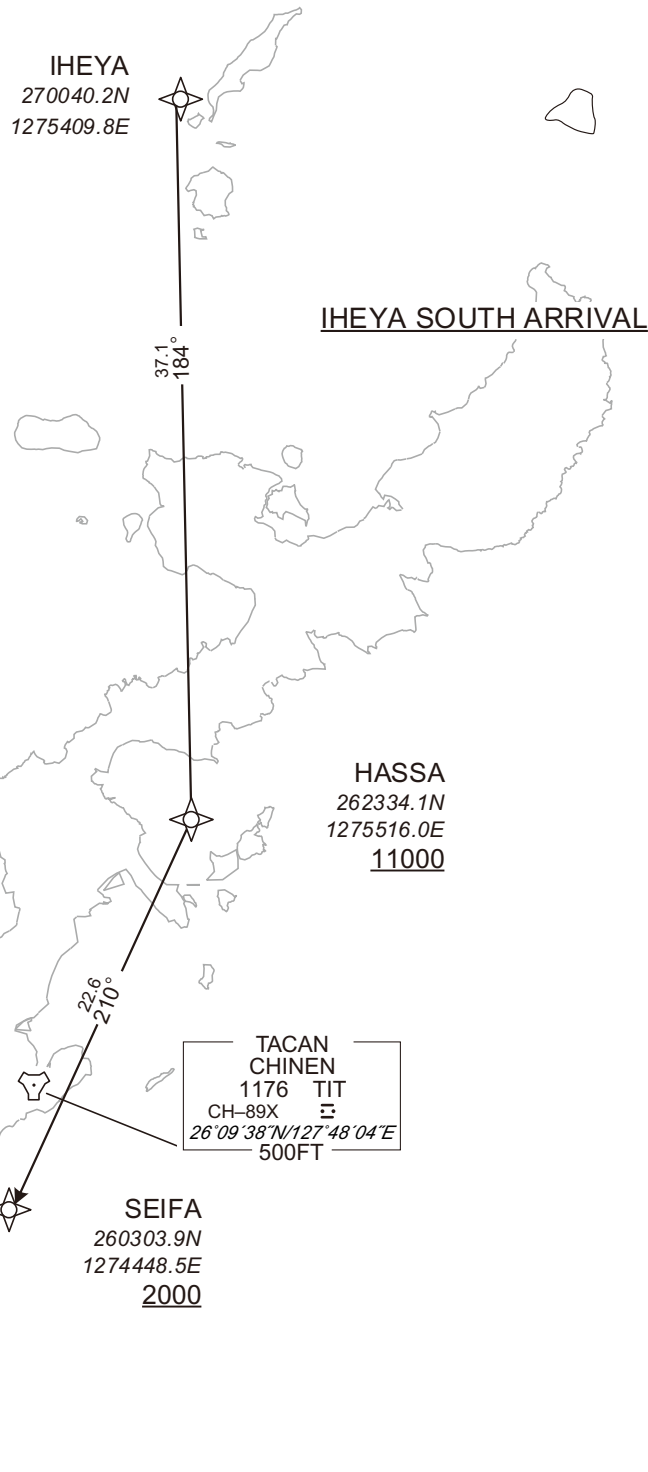
MHA 8000FT
MAX 230KIAS(at or below FL140)
MAX 240KIAS(above FL140 / at or below FL200)
MAX 265KIAS(above FL200)
NOT TO SCALE

Using NAVAID

D36.0 NHC
R229
NHC VORTAC
VELNO
D26.0 NHC
MAX240KIAS
MHA 8000
NOT TO SCALE

VORTAC
NAHA
116.5 NHC
CH-112X
26°12'31"N/127°38'34"E
100FT

TACAN
CHINEN
1176 TIT
CH-89X
26°09'38"N/127°48'04"E
500FT



CHANGE : Navigation Specification(Basic RNP1 → RNP1).

STANDARD ARRIVAL CHART-INSTRUMENT

ROAH / NAHA

RNAV STAR RWY36

IHEYA SOUTH ARRIVAL

From IHEYA, to HASSA at or above 11000FT, to SEIFA at or above 2000FT.

Serial Number	Path Descriptor	Waypoint Identifier	Fly Over	Course °M(°T)	Magnetic Variation	Distance (NM)	Turn Direction	Altitude (FT)	Speed (KIAS)	Vertical Angle	Navigation Specification
001	IF	IHEYA	-	-	-5.6	-	-	-	-	-	RNP1
002	TF	HASSA	-	184 (178.5)	-5.6	37.1	-	+11000	-	-	RNP1
003	TF	SEIFA	-	210 (204.6)	-5.6	22.6	-	+2000	-	-	RNP1

Path	Waypoint Identifier	Inbound Course °M(°T)	Magnetic Variation	Outbound Time (MIN)	Turn Direction	Minimum Altitude (FT)	Maximum Altitude (FT)	Speed (KIAS)	Navigation Specification
Hold	IHEYA	245 (239.1)	-5.8	1.0 (-14000) 1.5 (+14001)	R	8000	-	-230 (-14000) -240 (14001-20000) -265 (+20001)	RNP1

VELNO SOUTH ARRIVAL

From VELNO, to VIGER at or above 2000FT.

Serial Number	Path Descriptor	Waypoint Identifier	Fly Over	Course °M(°T)	Magnetic Variation	Distance (NM)	Turn Direction	Altitude (FT)	Speed (KIAS)	Vertical Angle	Navigation Specification
001	IF	VELNO	-	-	-5.6	-	-	-	-	-	RNP1
002	TF	VIGER	-	081 (075.4)	-5.6	15.7	-	+2000	-	-	RNP1

CHANGE : Navigation Specification(Basic RNP1 → RNP1).

STANDARD ARRIVAL CHART-INSTRUMENT

ROAH/NAHA

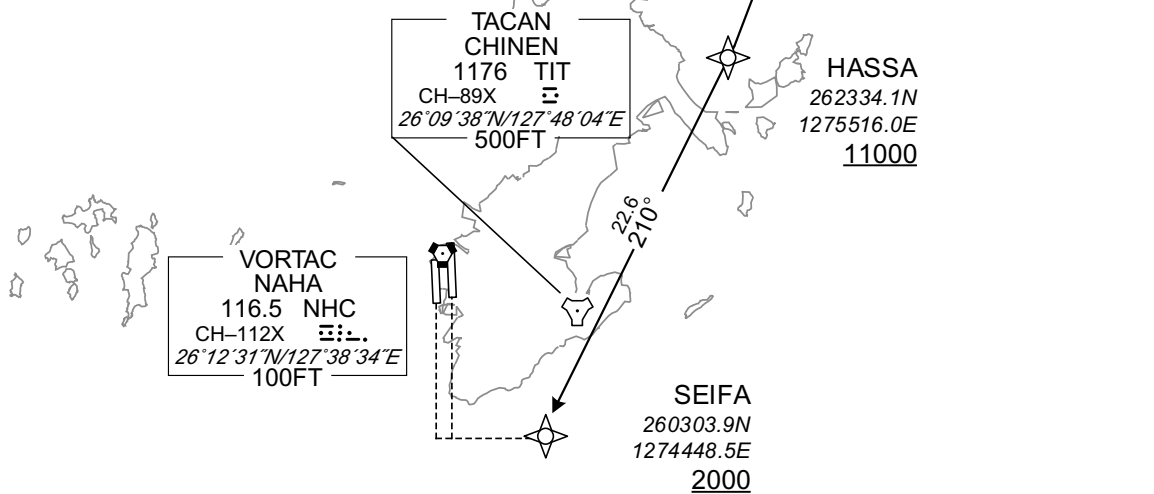
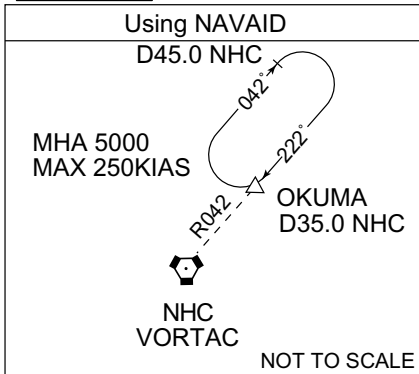
RNAV STAR RWY36

RESORT SOUTH ARRIVAL

RNP1

Note 1) GNSS required.
2) CDO only.

VAR 6°W



From OKUMA, to HASSA at or above 11000FT, to SEIFA at or above 2000FT.

Serial Number	Path Descriptor	Waypoint Identifier	Fly Over	Course °M(°T)	Magnetic Variation	Distance (NM)	Turn Direction	Altitude (FT)	Speed (KIAS)	Vertical Angle	Navigation Specification
001	IF	OKUMA	-	-	-5.6	-	-	-	-	-	RNP1
002	TF	HASSA	-	206 (200.7)	-5.6	17.9	-	+11000	-	-	RNP1
003	TF	SEIFA	-	210 (204.6)	-5.6	22.6	-	+2000	-	-	RNP1

CHANGE : Navigation Specification(Basic RNP1 → RNP1).

STANDARD ARRIVAL CHART-INSTRUMENT

ROAH/NAHA

RNAV STAR RWY36

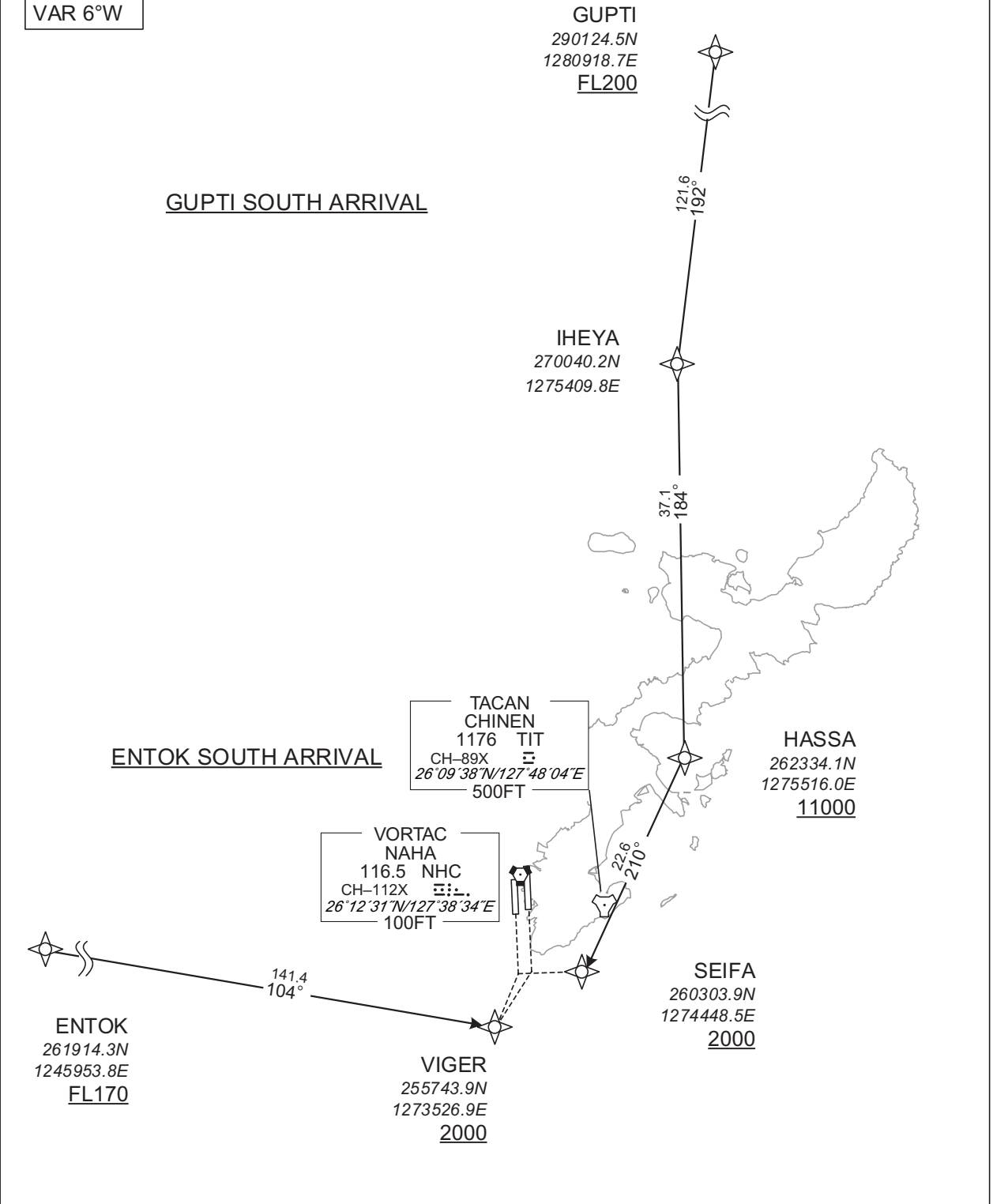
GUPTI SOUTH ARRIVAL
ENTOK SOUTH ARRIVAL

RNP1

Note 1) GNSS required. 2) CDO only.

VAR 6°W

CHANGE : Navigation Specification(Basic RNP1 → RNP1).



STANDARD ARRIVAL CHART-INSTRUMENT

ROAH / NAHA

RNAV STAR RWY36

GUPTI SOUTH ARRIVAL

From GUPTI at or above FL200, to IHEYA, to HASSA at or above 11000FT, to SEIFA at or above 2000FT.

Serial Number	Path Descriptor	Waypoint Identifier	Fly Over	Course °M(°T)	Magnetic Variation	Distance (NM)	Turn Direction	Altitude (FT)	Speed (KIAS)	Vertical Angle	Navigation Specification
001	IF	GUPTI	-	-	-5.6	-	-	+FL200	-	-	RNP1
002	TF	IHEYA	-	192 (186.4)	-5.6	121.6	-	-	-	-	RNP1
003	TF	HASSA	-	184 (178.5)	-5.6	37.1	-	+11000	-	-	RNP1
004	TF	SEIFA	-	210 (204.6)	-5.6	22.6	-	+2000	-	-	RNP1

ENTOK SOUTH ARRIVAL

From ENTOK at or above FL170, to VIGER at or above 2000FT.

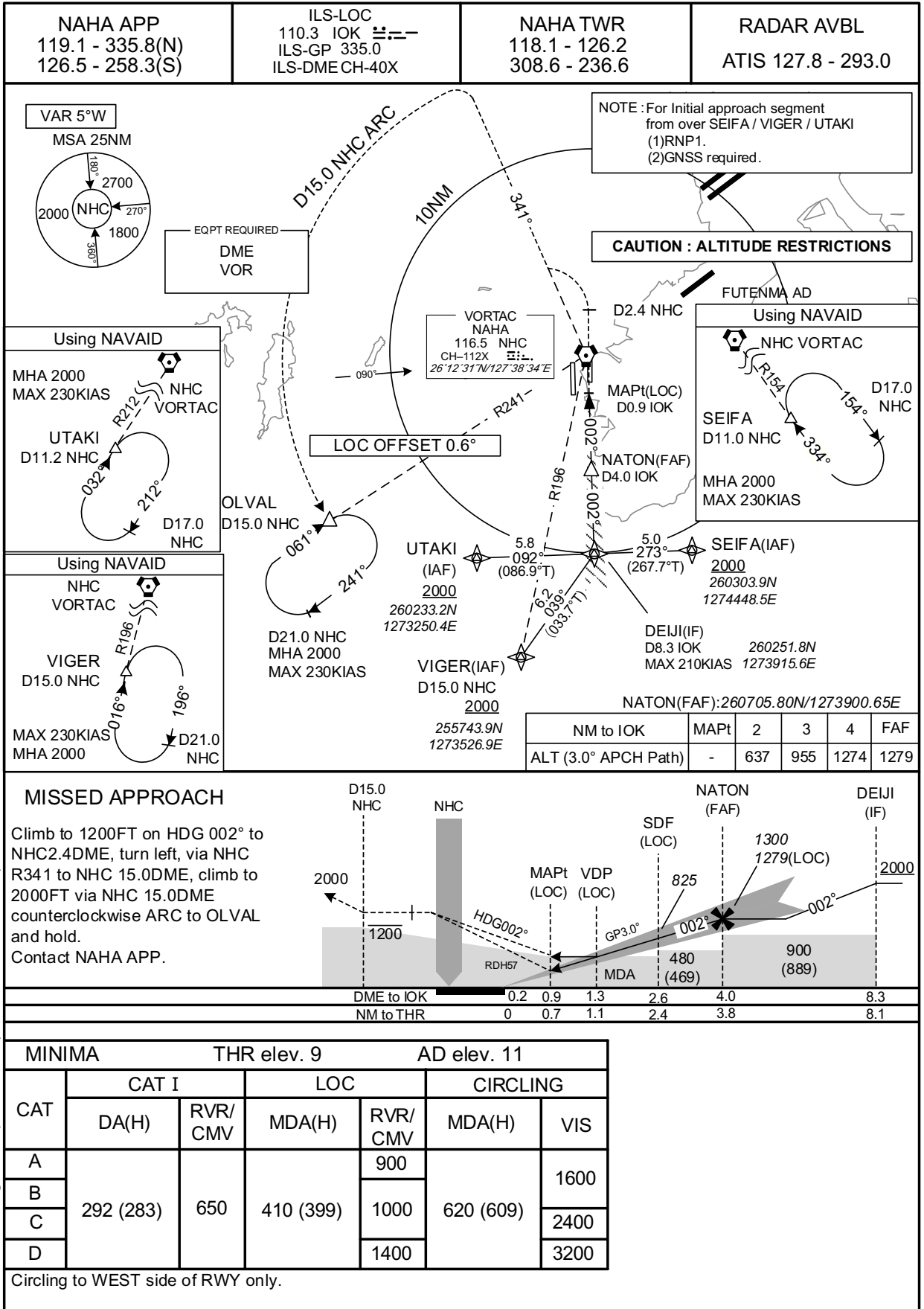
Serial Number	Path Descriptor	Waypoint Identifier	Fly Over	Course °M(°T)	Magnetic Variation	Distance (NM)	Turn Direction	Altitude (FT)	Speed (KIAS)	Vertical Angle	Navigation Specification
001	IF	ENTOK	-	-	-5.6	-	-	+FL170	-	-	RNP1
002	TF	VIGER	-	104 (098.2)	-5.6	141.4	-	+2000	-	-	RNP1

CHANGE : Navigation Specification(Basic RNP1 → RNP1).

INSTRUMENT APPROACH CHART

ROAH / NAHA

ILS Z or LOC Z RWY36R



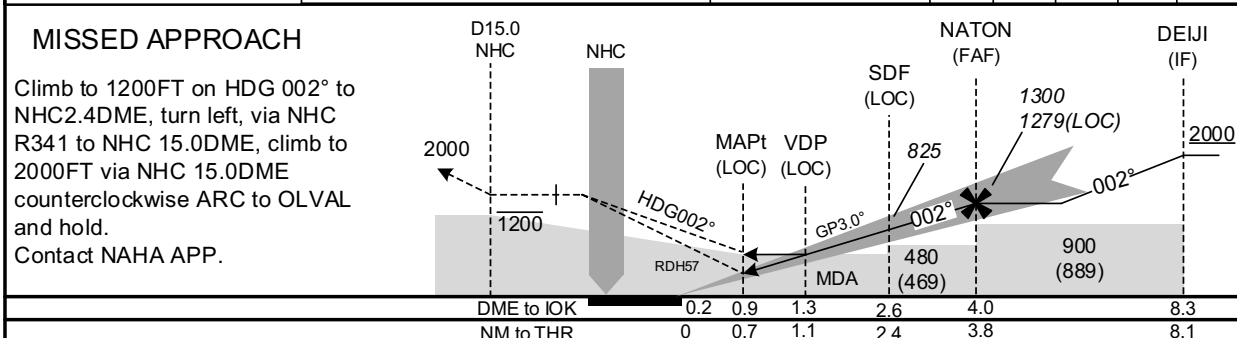
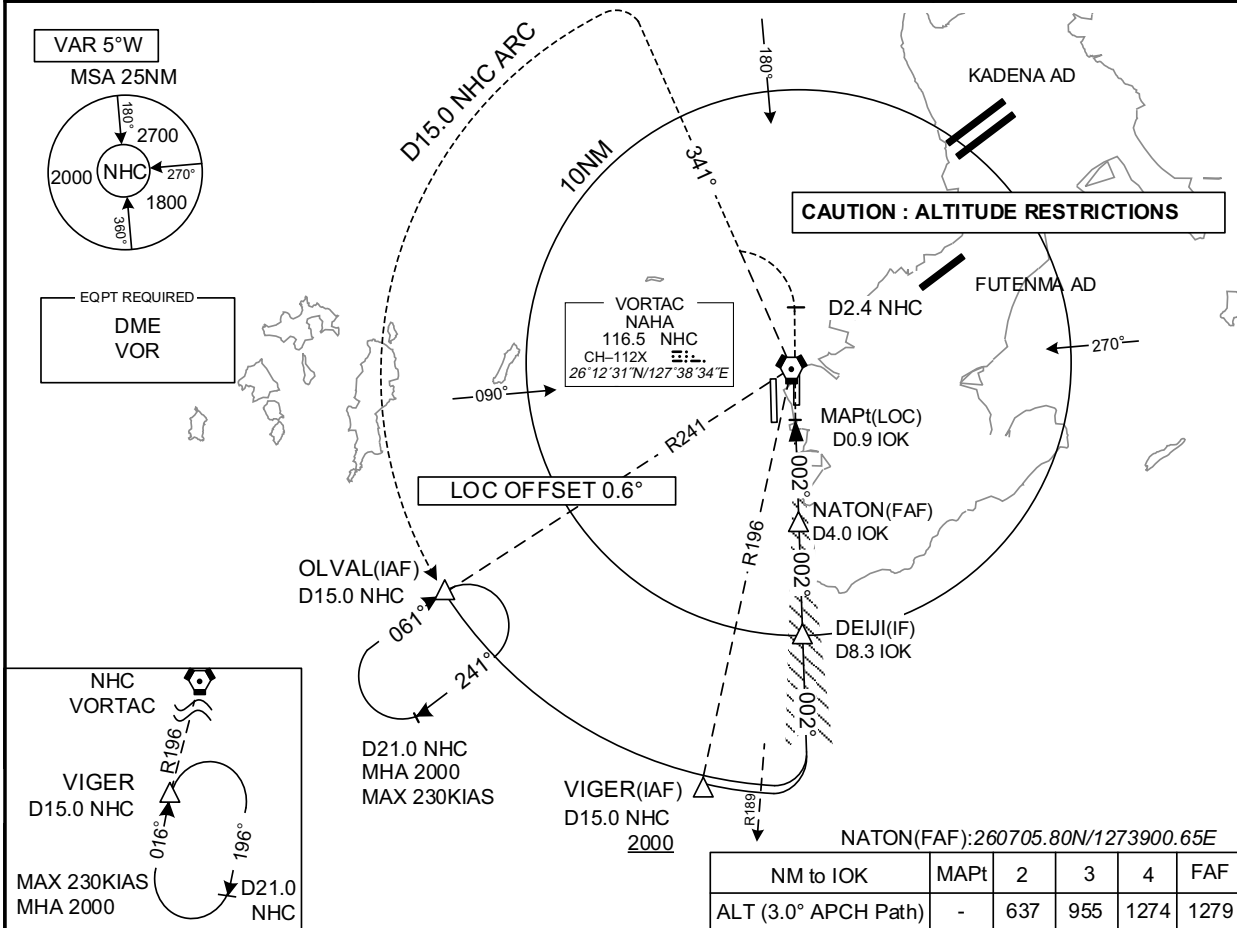
CHANGE : Navigation Specification(Basic RNP1 → RNP1).

INSTRUMENT APPROACH CHART

ROAH / NAHA

ILS Y or LOC Y RWY36R

NAHA APP 119.1 - 335.8(N) 126.5 - 258.3(S)	ILS-LOC 110.3 IOK ILS-GP 335.0 ILS-DME CH-40X	NAHA TWR 118.1 - 126.2 308.6 - 236.6	RADAR AVBL ATIS 127.8 - 293.0
---	---	---	---



MINIMA		THR elev. 9		AD elev. 11		
CAT	CAT I		LOC		CIRCLING	
	DA(H)	RVR/CMV	MDA(H)	RVR/CMV	MDA(H)	VIS
A	292 (283)	650	410 (399)	900	620 (609)	1600
B				1000		2400
C				1400		3200
D						

Circling to WEST side of RWY only.

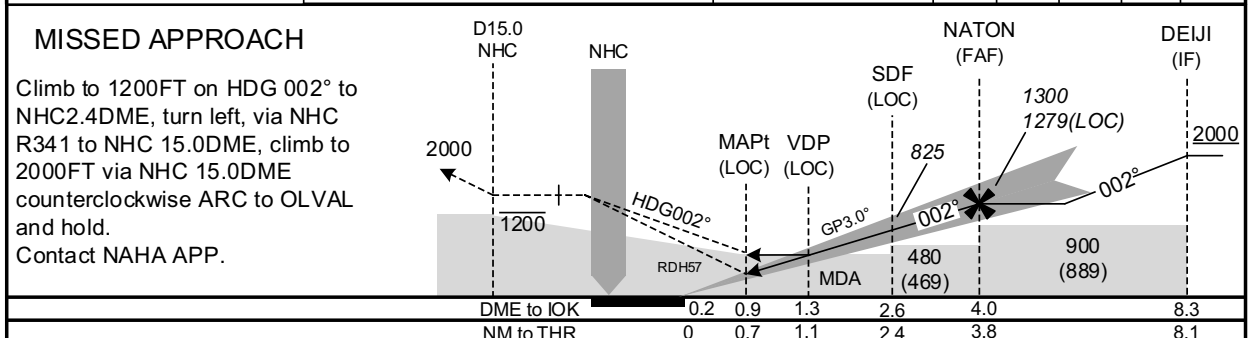
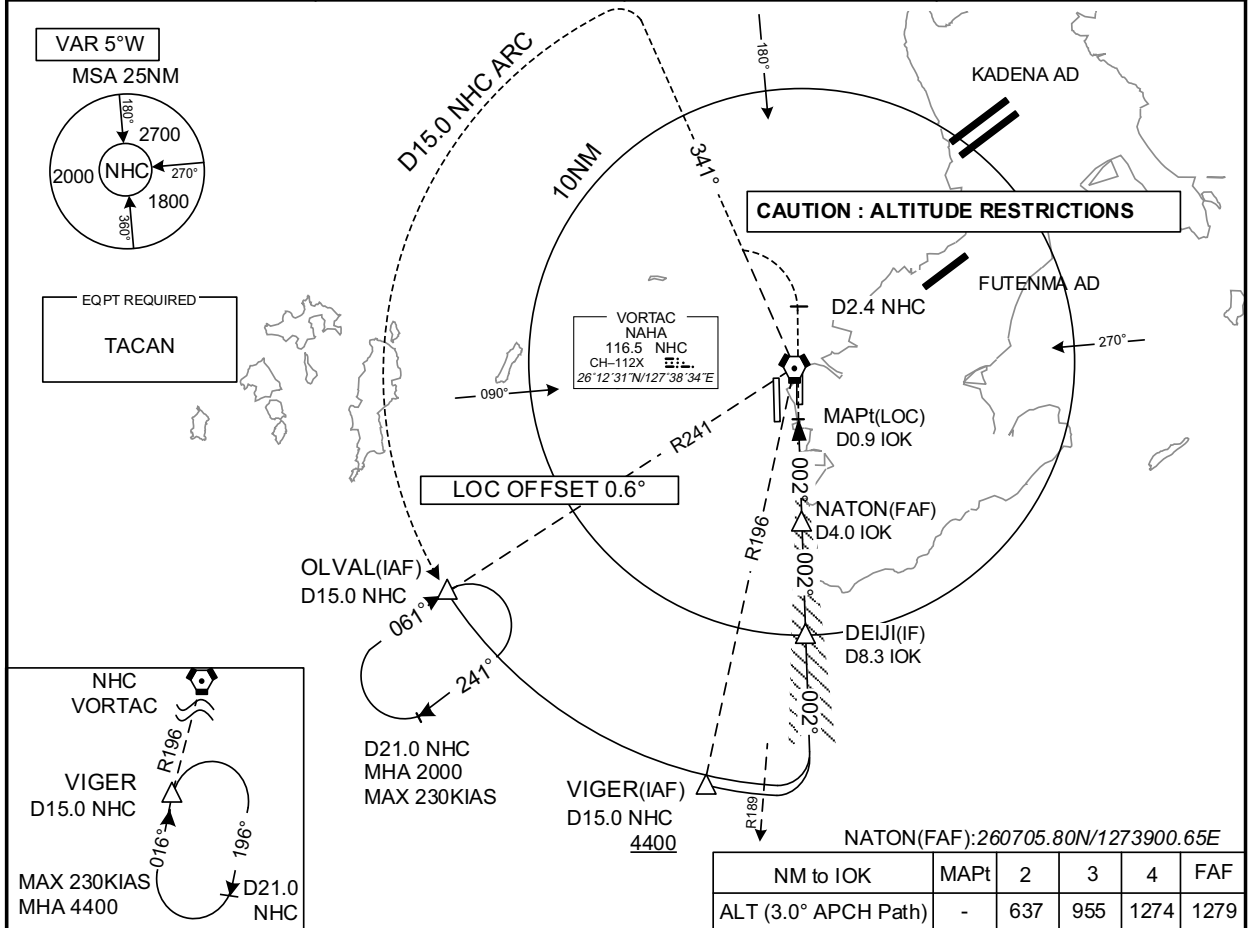
CHANGE : Description of VAR.

INSTRUMENT APPROACH CHART

ROAH / NAHA

ILS X or LOC X RWY36R

NAHA APP 119.1 - 335.8(N) 126.5 - 258.3(S)	ILS-LOC 110.3 IOK ILS-GP 335.0 ILS-DME CH-40X	NAHA TWR 118.1 - 126.2 308.6 - 236.6	RADAR AVBL ATIS 127.8 - 293.0
---	---	---	---



CAT	CAT I		LOC		CIRCLING	
	DA(H)	RVR/CMV	MDA(H)	RVR/CMV	MDA(H)	VIS
	A	292 (283)	650	410 (399)	1000	620 (609)
B	1600					
C	2400					
D	3200					

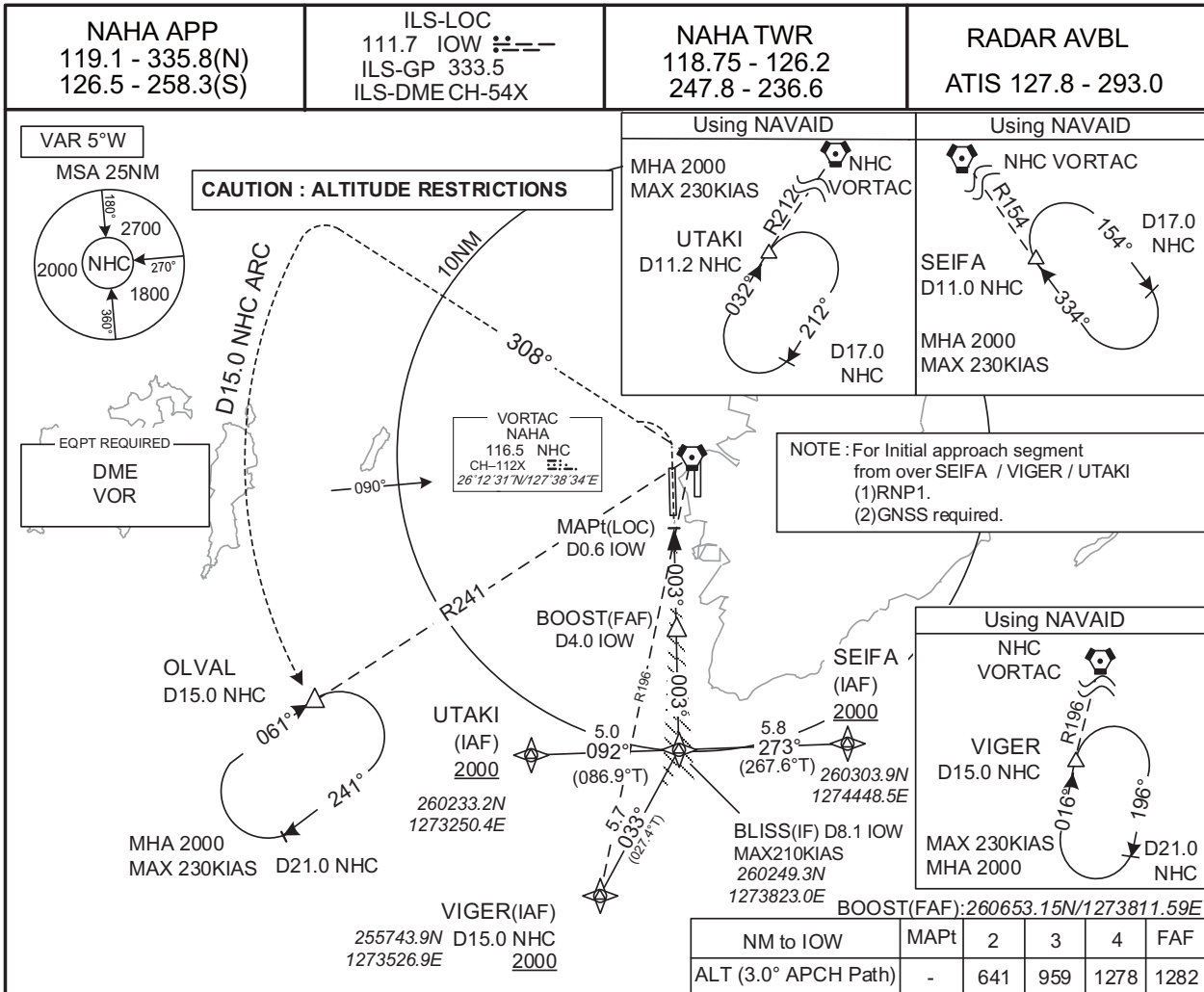
CHANG: Description of VAR.

Circling to WEST side of RWY only.

INSTRUMENT APPROACH CHART

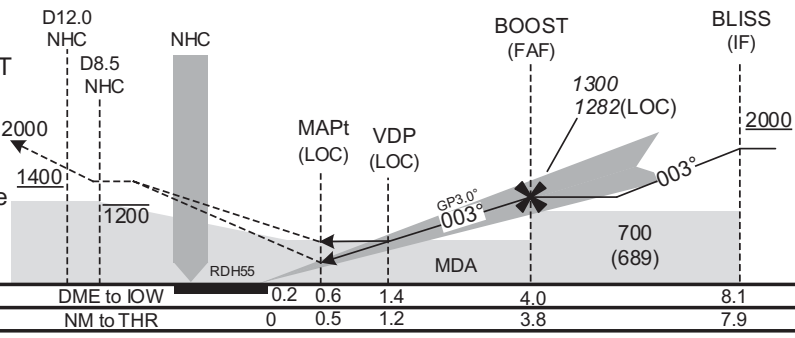
ROAH / NAHA

ILS Z or LOC Z RWY36L



MISSED APPROACH

Turn left, climb to 1200FT via NHC
 R 308 to NHC 8.5DME, climb to 2000FT
 via NHC R308 to NHC 15.0DME, via
 NHC 15.0DME counterclockwise ARC
 to OLVAL and hold.
 Cross NHC R308/12.0DME at or above
 1400FT.
 Contact NAHA APP.



CHANGE : Navigation Specification(Basic RNP1 → RNP1).

MINIMA		THR elev. 14		AD elev. 11		
CAT	CAT I		LOC		CIRCLING	
	DA(H)	RVR/CMV	MDA(H)	RVR/CMV	MDA(H)	VIS
A				900		1600
B					620 (609)	
C	214 (200)	550	430 (419)	1000		2400
D				1400		3200

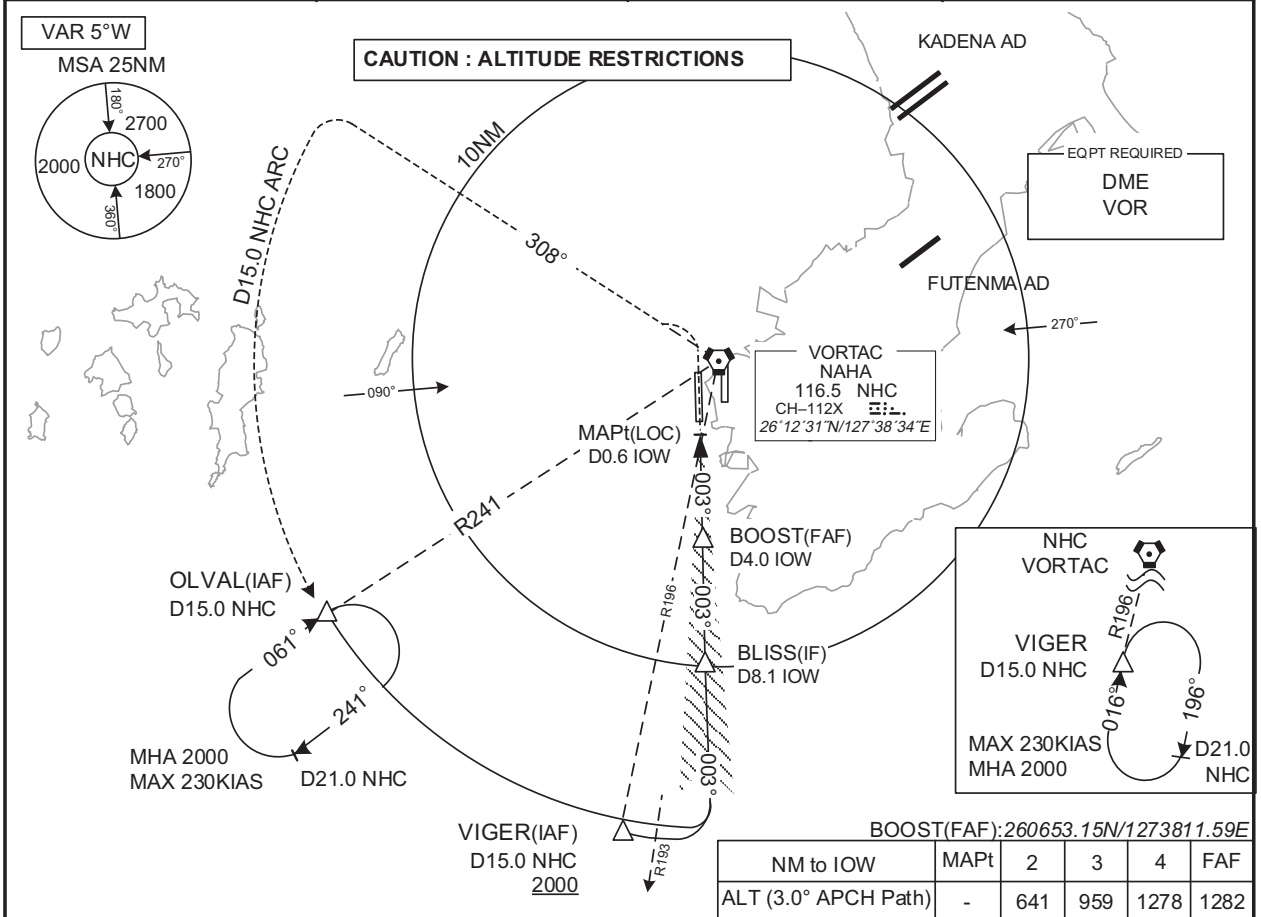
Circling to WEST side of RWY only.

INSTRUMENT APPROACH CHART

ROAH / NAHA

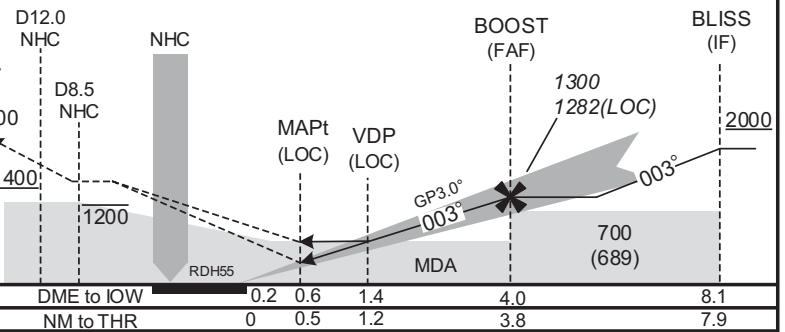
ILS Y or LOC Y RWY36L

NAHA APP 119.1 - 335.8(N) 126.5 - 258.3(S)	ILS-LOC 111.7 IOW ILS-GP 333.5 ILS-DME CH-54X	NAHA TWR 118.75 - 126.2 247.8 - 236.6	RADAR AVBL ATIS 127.8 - 293.0
---	---	--	---



MISSED APPROACH

Turn left, climb to 1200FT via NHC
 R308 to NHC 8.5DME, climb to 2000FT
 via NHC R308 to NHC 15.0DME, via
 NHC 15.0DME counterclockwise ARC
 to OLVAL and hold.
 Cross NHC R308/12.0DME at or above
 1400FT.
 Contact NAHA APP.



CAT	THR elev. 14		AD elev. 11				
	DA(H)	RVR/CMV	MDA(H)	RVR/CMV	MDA(H)	VIS	
A	214 (200)	550	430 (419)	900	620 (609)	1600	
B				1000			
C				1400			2400
D				3200			

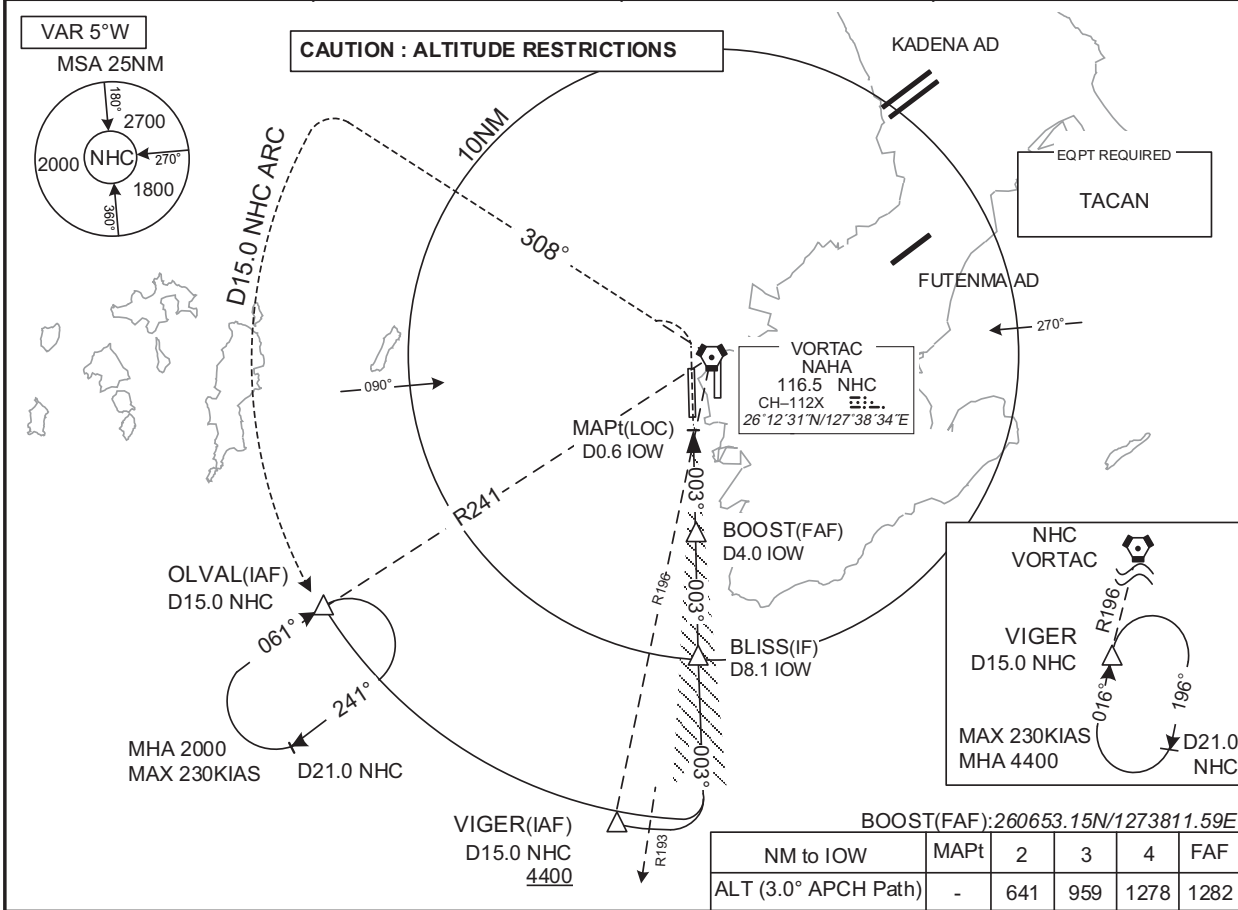
Change : Description of VAR.
 Circling to WEST side of RWY only.

INSTRUMENT APPROACH CHART

ROAH / NAHA

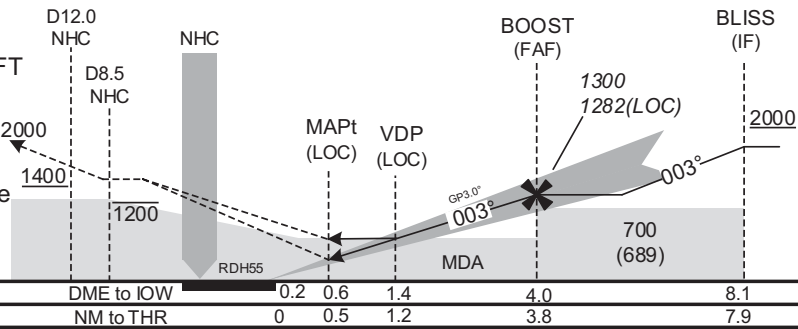
ILS X or LOC X RWY36L

NAHA APP 119.1 - 335.8(N) 126.5 - 258.3(S)	ILS-LOC 111.7 IOW ILS-GP 333.5 ILS-DME CH-54X	NAHA TWR 118.75 - 126.2 247.8 - 236.6	RADAR AVBL ATIS 127.8 - 293.0
---	---	--	---



MISSED APPROACH

Turn left, climb to 1200FT via NHC
 R308 to NHC8.5DME, climb to 2000FT
 via NHC R308 to NHC 15.0DME, via
 NHC 15.0DME counterclockwise ARC 2000
 to OLVAL and hold.
 Cross NHC R308/12.0DME at or above
 1400FT.
 Contact NAHA APP.



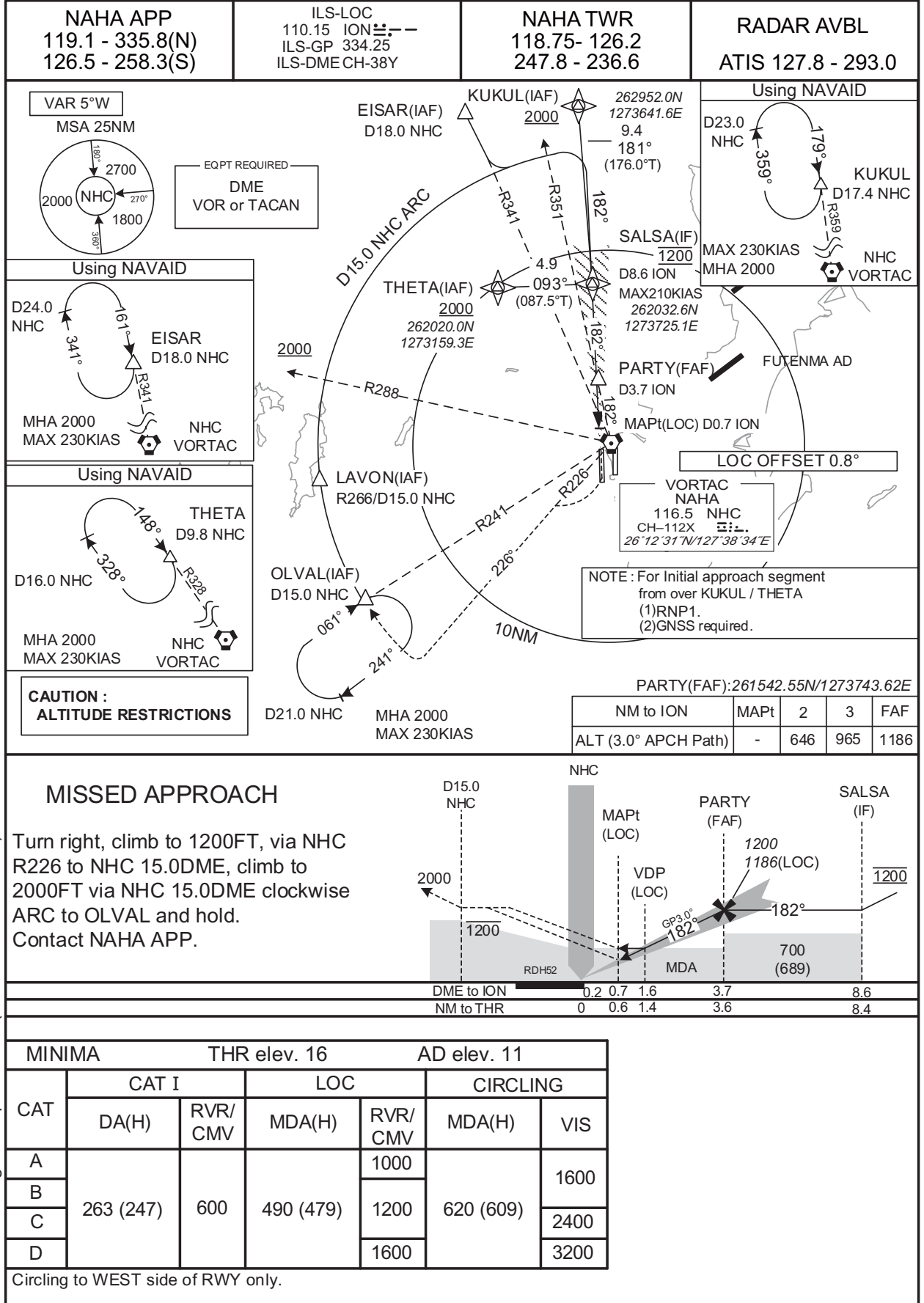
MINIMA		THR elev. 14		AD elev. 11		
CAT	CAT I		LOC		CIRCLING	
	DA(H)	RVR/CMV	MDA(H)	RVR/CMV	MDA(H)	VIS
A	214 (200)	550	430 (419)	900	620 (609)	1600
B				1000		2400
C				1400		3200
D						

Circling to WEST side of RWY only.

CHANGE : Description of VAR.

INSTRUMENT APPROACH CHART

ROAH / NAHA ILS or LOC RWY18R

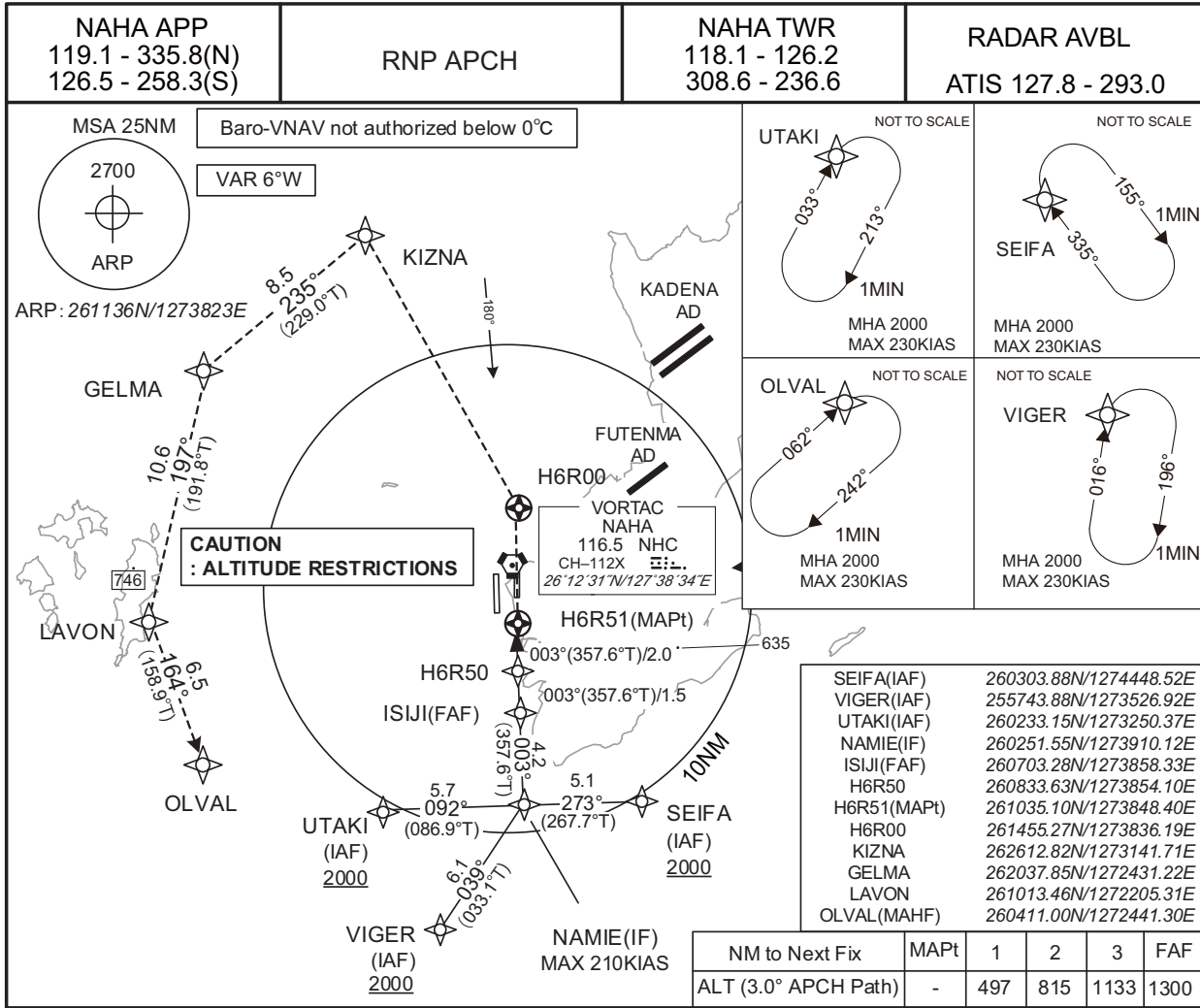


CHANGE : Navigation Specification(Basic RNP1 → RNP1).

INSTRUMENT APPROACH CHART

ROAH / NAHA

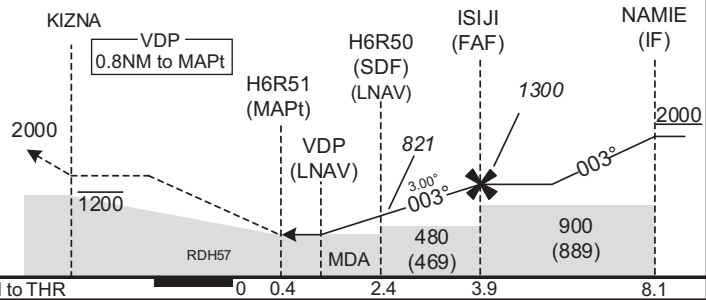
RNP RWY36R



MISSED APPROACH

Direct to H6R00, turn left direct to KIZNA at or below 1200FT, to GELMA, to LAVON, to OLVAL and hold at 2000FT.

Contact NAHA APP.



CHANGE : Description of VAR.

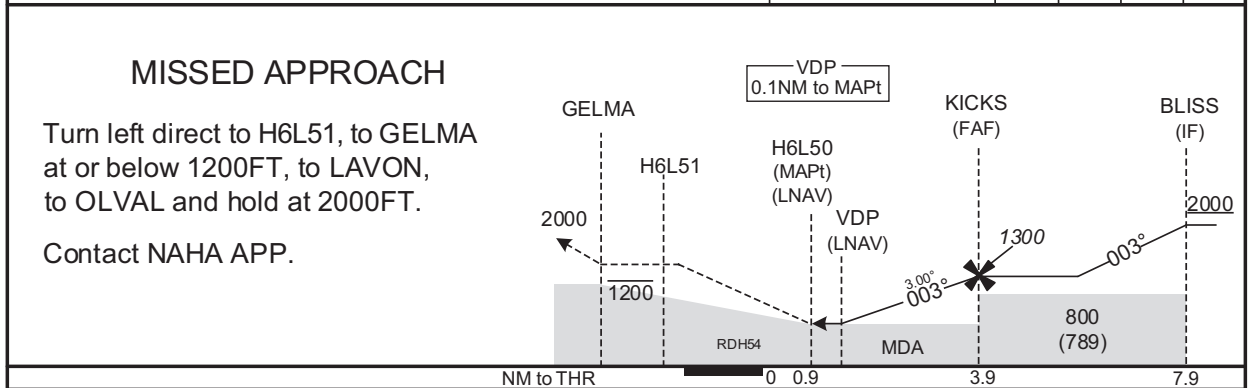
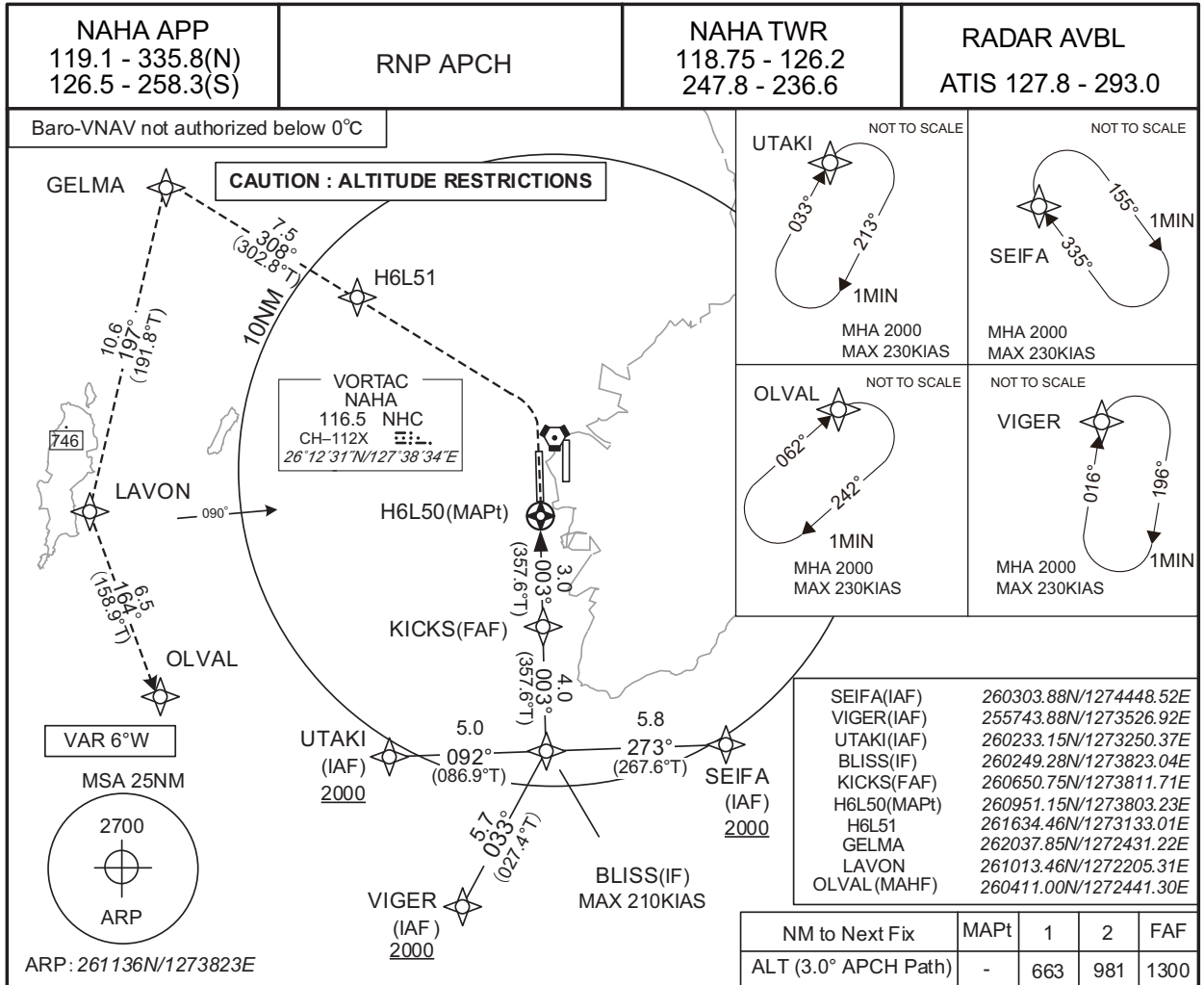
MINIMA		THR elev. 9		AD elev. 11		
CAT	LNAV/VNAV		LNAV		CIRCLING	
	DA(H)	RVR/CMV	MDA(H)	RVR/CMV	MDA(H)	VIS
A	410 (401)	900	410 (399)	900	620 (609)	1600
B		1000		2400		
C		1400		3200		
D						

Circling to WEST side of RWY only.

INSTRUMENT APPROACH CHART

ROAH / NAHA

RNP RWY36L



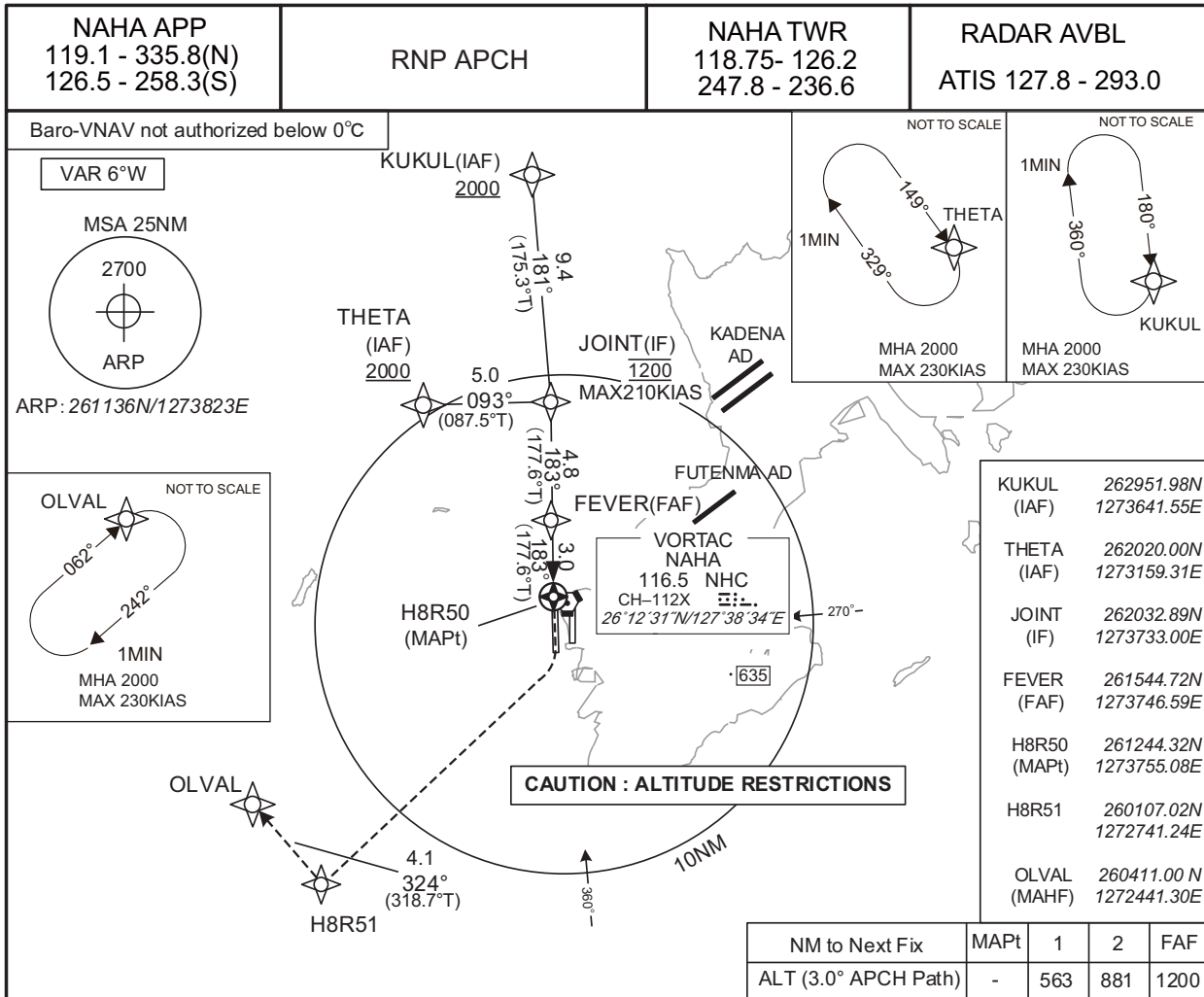
MINIMA		THR elev. 14		AD elev. 11			
CAT	LNAV/VNAV		LNAV		CIRCLING		
	DA(H)	RVR/CMV	MDA(H)	RVR/CMV	MDA(H)	VIS	
A	370 (356)	900	370 (359)	900	620 (609)	1600	
B		1000		1000		2400	
C		1400		1400		1400	3200
D							

Circling to WEST side of RWY only.

INSTRUMENT APPROACH CHART

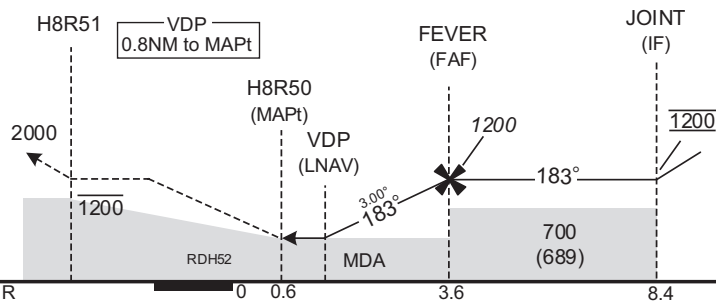
ROAH / NAHA

RNP RWY18R



MISSED APPROACH

Turn right direct to H8R51 at or below 1200FT, to OLVAL and hold at 2000FT.
Contact NAHA APP.



MINIMA		THR elev. 16		AD elev. 11		
CAT	LNAV/VNAV		LNAV		CIRCLING	
	DA(H)	RVR/CMV	MDA(H)	RVR/CMV	MDA(H)	VIS
A		1000		1000		1600
B	490 (474)	1200	490 (479)	1200	620 (609)	2400
C						
D						

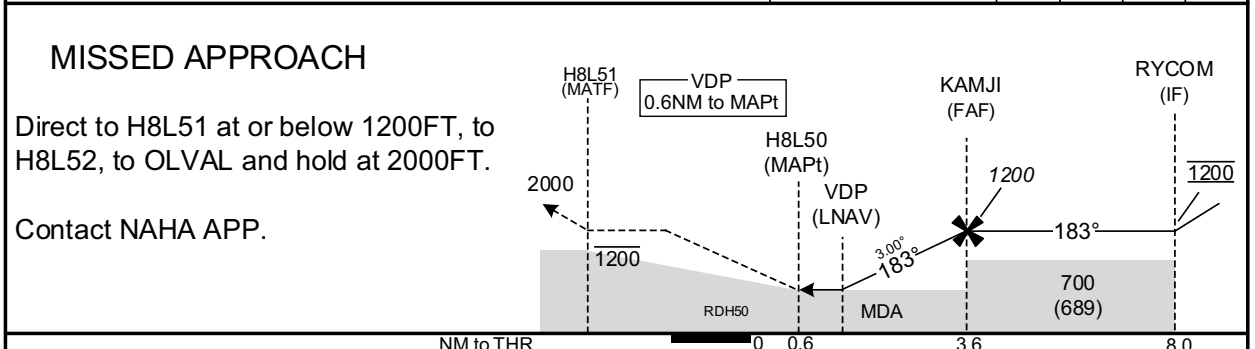
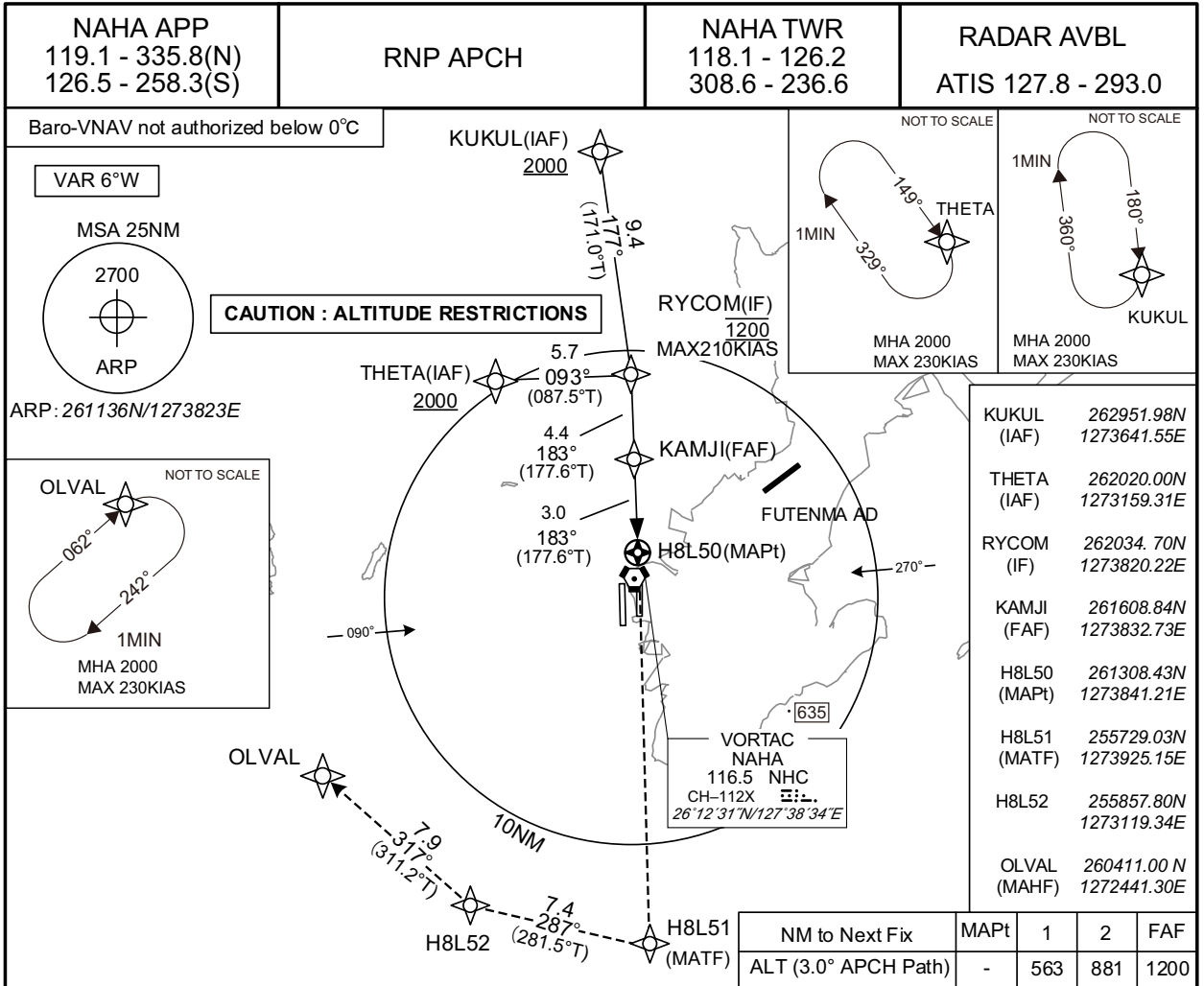
Circling to WEST side of RWY only.

CHANGE : Description of VAR.

INSTRUMENT APPROACH CHART

ROAH / NAHA

RNP RWY18L



CAT	MINIMA		THR elev. 11		AD elev. 11	
	LNAV/VNAV	LNAV	LNAV	CIRCLING	MDA(H)	VIS
A	430 (419)	1200	430 (419)	1200	620 (609)	1600
B		1300		1300		
C		1400		1400		
D		1600		1600		

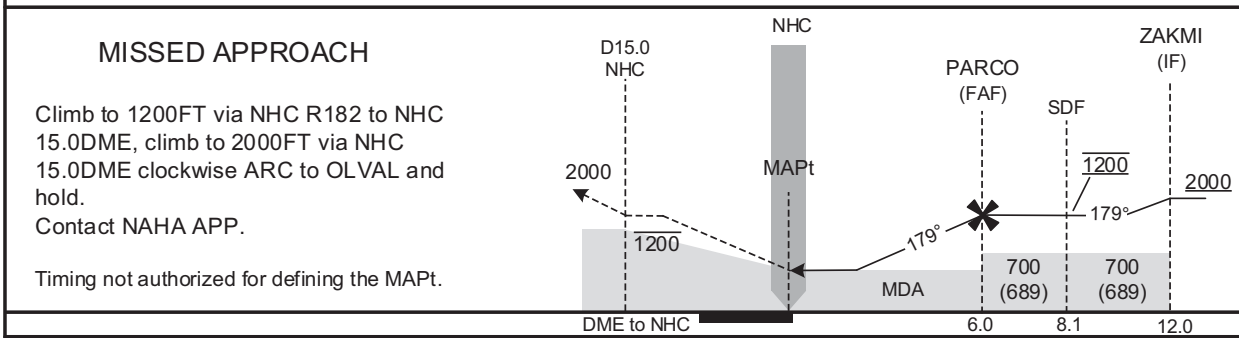
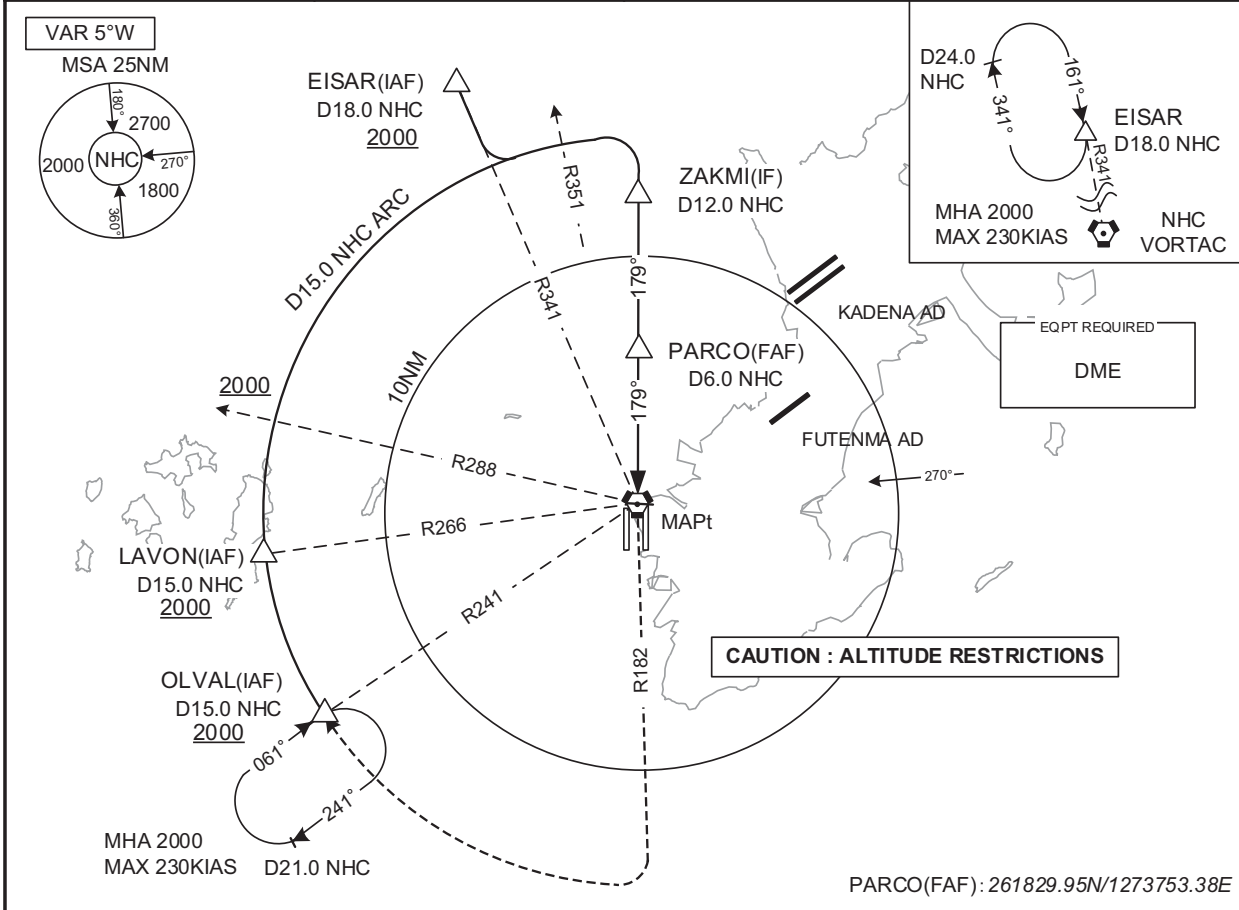
Circling to WEST side of RWY only.

INSTRUMENT APPROACH CHART

ROAH / NAHA

VOR A or TACAN B

NAHA APP 119.1 - 335.8(N) 126.5 - 258.3(S)	NAHA VORTAC 116.5 NHC CH-112X 26°12'31"N/127°38'34"E	NAHA TWR 118.75 - 118.1 247.8 - 308.6	RADAR AVBL ATIS 127.8 - 293.0
---	--	--	---



MINIMA		AD elev. 11
CAT	CIRCLING	
	MDA(H)	VIS
A	620 (609)	1600
B		2400
C		3200
D		

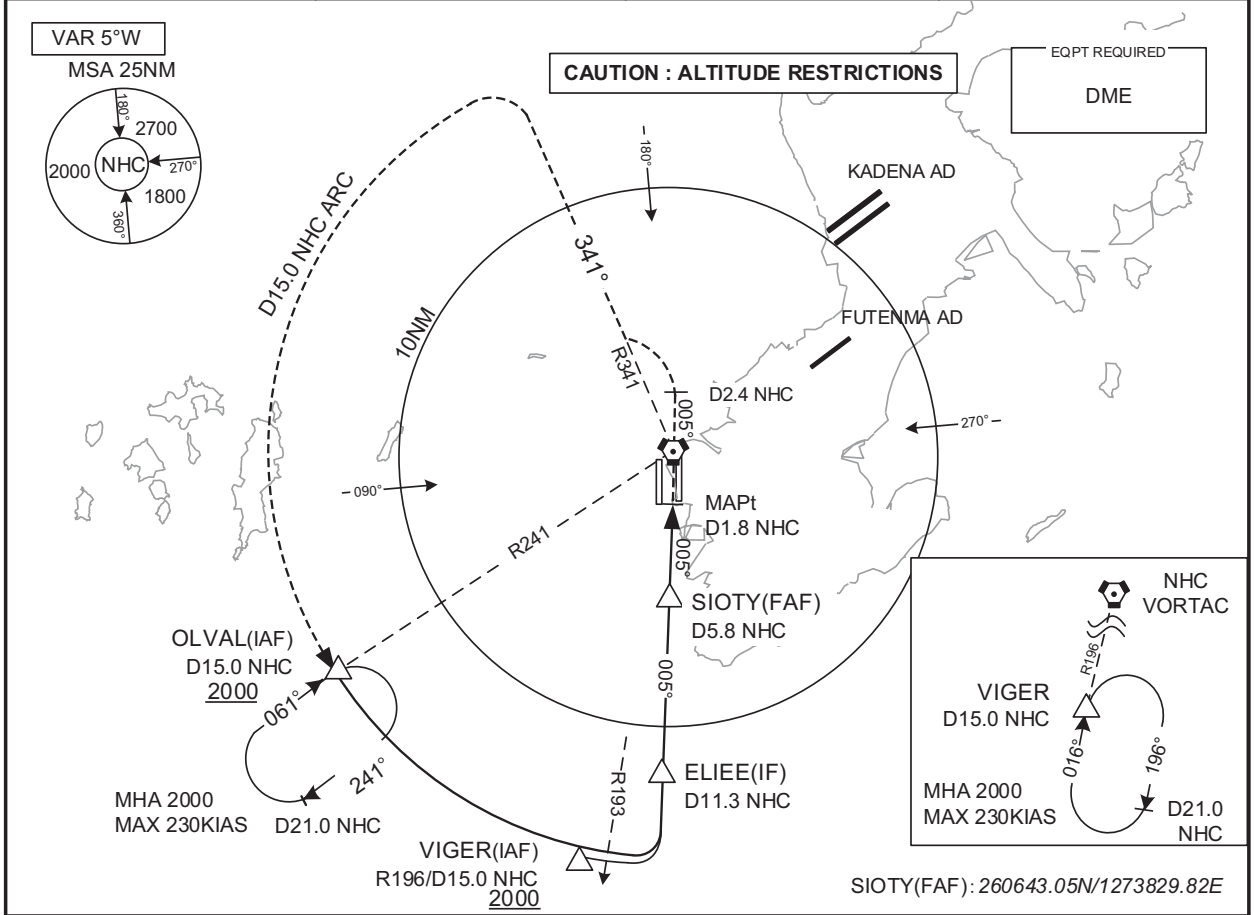
CHANGE : Description of VAR.
Circling to WEST side of RWY only.

INSTRUMENT APPROACH CHART

ROAH / NAHA

VOR C

NAHA APP 119.1 - 335.8(N) 126.5 - 258.3(S)	NAHA VORTAC 116.5 NHC CH-112X 26°12'31"N/127°38'34"E	NAHA TWR 118.75 - 118.1 247.8 - 308.6	RADAR AVBL ATIS 127.8 - 293.0
---	--	--	---

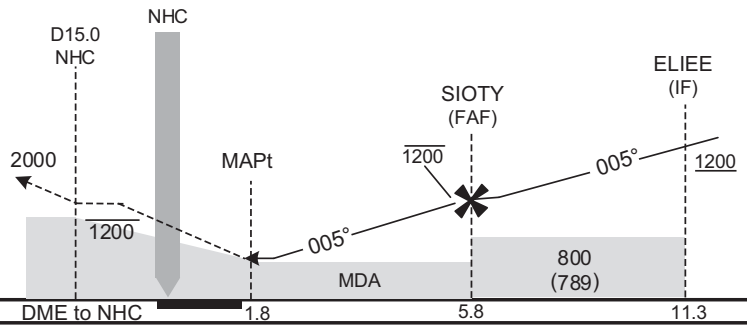


MISSED APPROACH

Climb to 1200FT via NHC R005 to NHC 2.4DME, turn left proceed via NHC R341 to NHC 15.0DME, climb to 2000FT via NHC 15.0 DME counterclockwise ARC to OLVAL and hold.

Contact NAHA APP.

Timing not authorized for defining the MAPt.



CHANGE : Description of VAR.

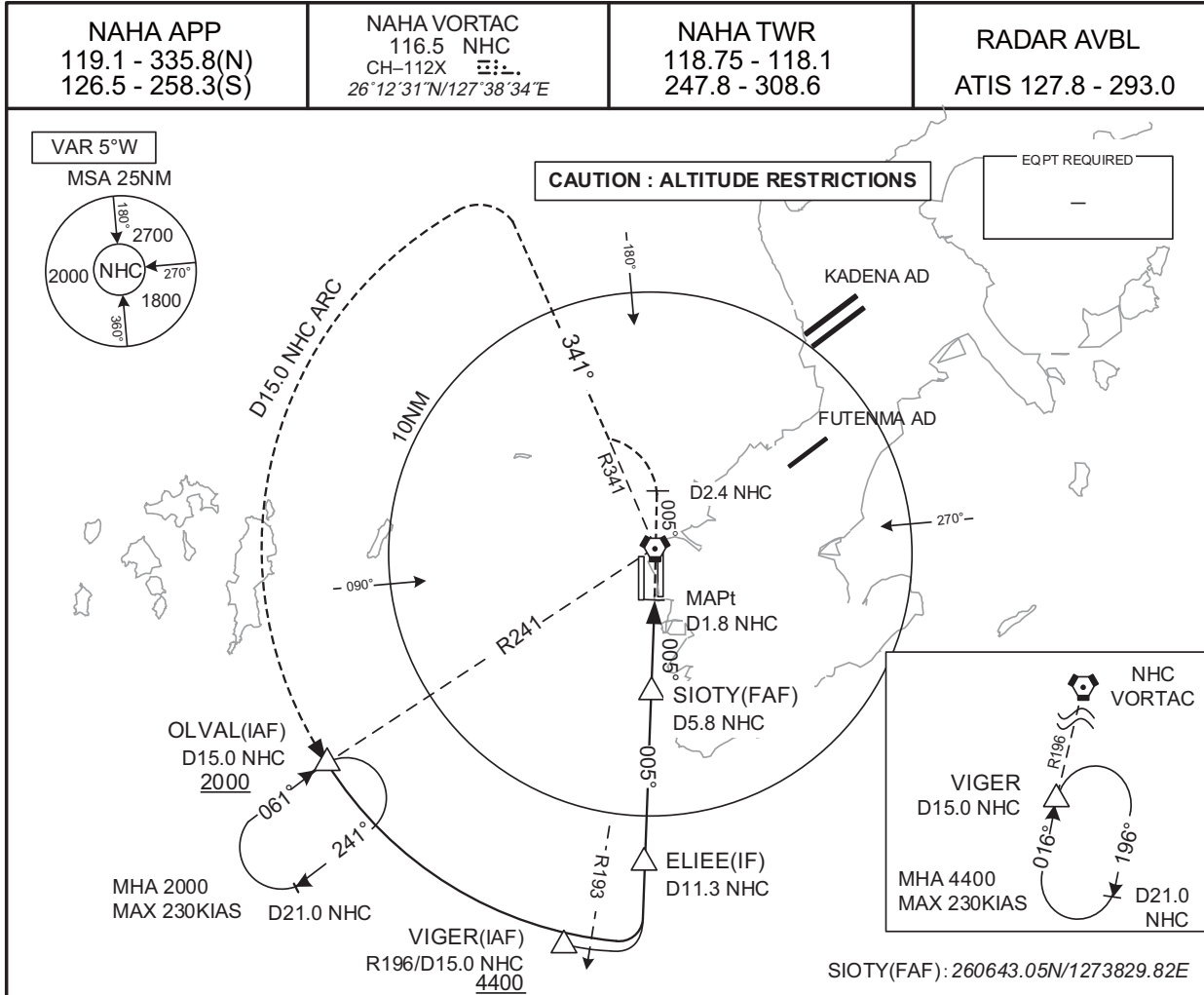
MINIMA		AD elev. 11
CAT	CIRCLING	
	MDA(H)	VIS
A	620 (609)	1600
B		2400
C		3200
D		

Circling to WEST side of RWY only.

INSTRUMENT APPROACH CHART

ROAH / NAHA

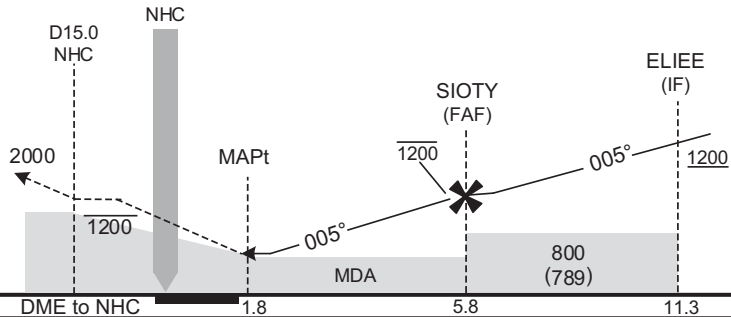
TACAN D



MISSED APPROACH

Climb to 1200FT via NHC R005 to NHC 2.4DME, turn left proceed via NHC R341 to NHC 15.0DME, climb to 2000FT via NHC 15.0 DME counterclockwise ARC to OLVAL and hold.
 Contact NAHA APP.

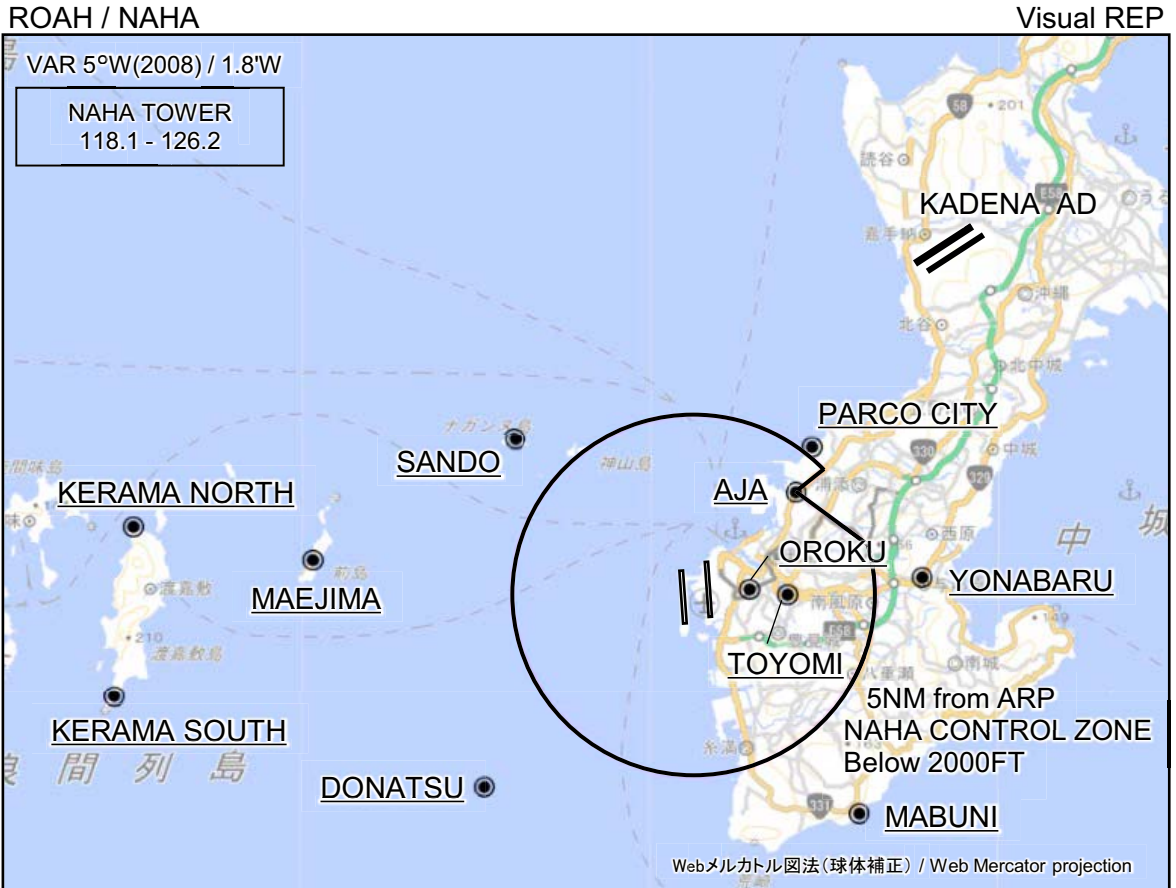
Timing not authorized for defining the MAPt.



CHANGE : Description of VAR.

MINIMA		AD elev. 11
CAT	CIRCLING	
	MDA(H)	VIS
A	700 (689)	1600
B		2400
C		3200
D		

Circling to WEST side of RWY only.



※図中に標高を示す数字がある場合、単位はメートル(m)である。The unit of measurement used to express elevation is meter(m).

CHANGE : Map updated. BRG/DIST from ARP. Visual REP established(Oroku, Parco City, Toyomi).

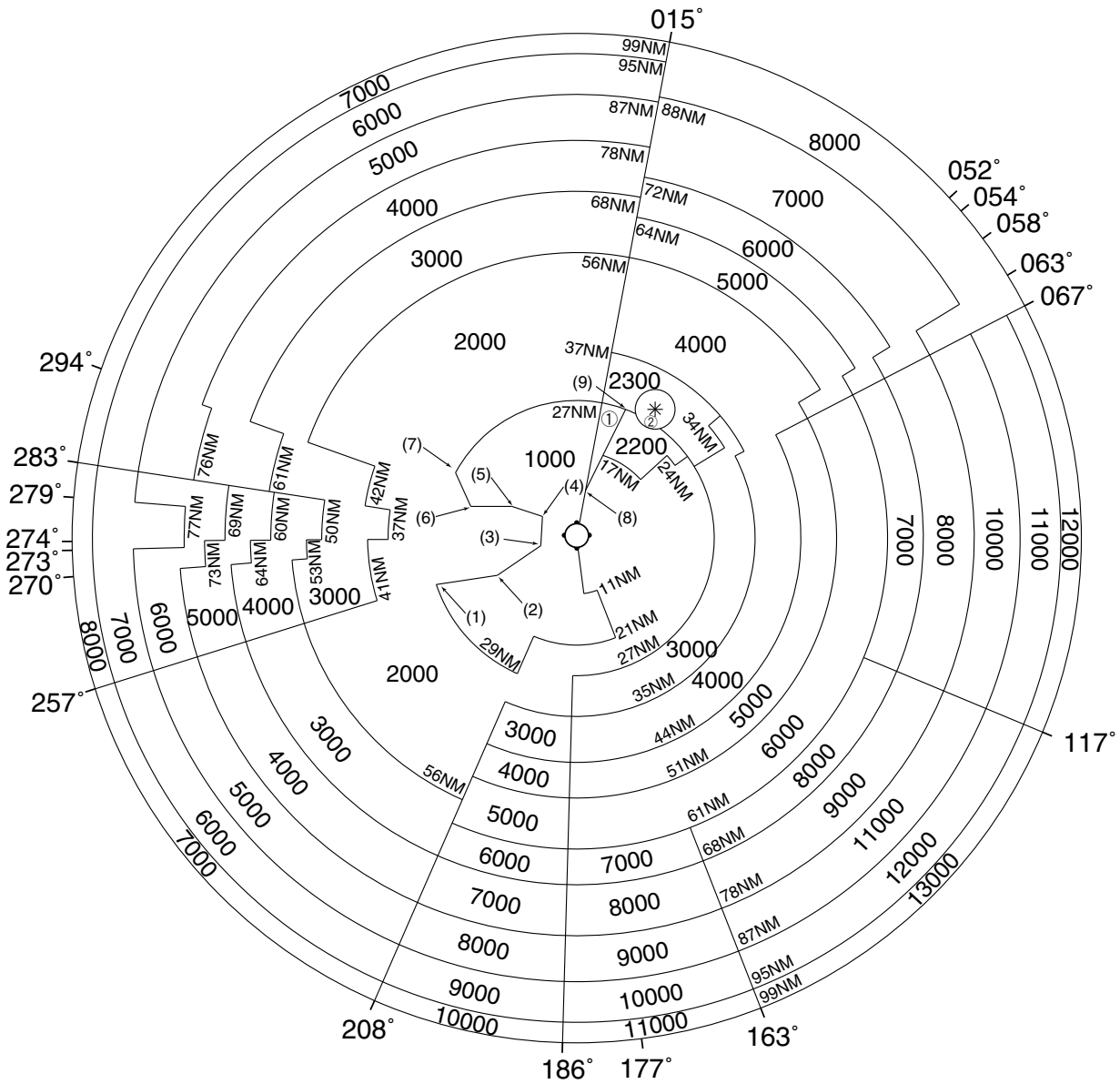
Call sign	BRG / DIST from ARP	Remarks
サンド Sando	311°T / 6.6NM	ナガンヌ島 Island
慶良間ノース Kerama North	277°T / 15.4NM	渡嘉敷島北端 North edge of island
前島 Maejima	276°T / 10.5NM	前島 Island
慶良間サウス Kerama South	260°T / 16.1NM	渡嘉敷島南端 South edge of island
ドーナツ Donatsu	227°T / 7.8NM	ルカン礁 Coral reef
パルコシティ Parco City	037°T / 5.2NM	パルコシティ Shopping mall
安謝 Aja	043°T / 4.0NM	国道58号線安謝橋 Bridge
小禄 Oroku	083°T / 1.5NM	モノレール小禄駅 Station
与那原 Yonabaru	085°T / 6.2NM	国道329号線与那原交叉点 Intersection
とよみ Toyomi	090°T / 2.5NM	とよみ大橋と爬龍橋の交点 Intersection
摩文仁 Mabuni	143°T / 7.5NM	平和祈念公園 Park



ROAH / NAHA

Minimum Vectoring Altitude CHART

VAR 5°W (2011)



- | | | | |
|--------|----------------------|----------------------|--------------------------------|
| ① 1500 | (1) 260301N/1270807E | (6) 261829N/1271524E | CENTER: 261231N/1273834E (NHC) |
| ② 2600 | (2) 260459N/1272121E | (7) 262505N/1271157E | * : 263759N/1275528E |
| | (3) 261057N/1273045E | (8) 262154N/1274025E | RADIUS 3.9NM |
| | (4) 261640N/1273102E | (9) 263755N/1274900E | |
| | (5) 261835N/1272422E | | |