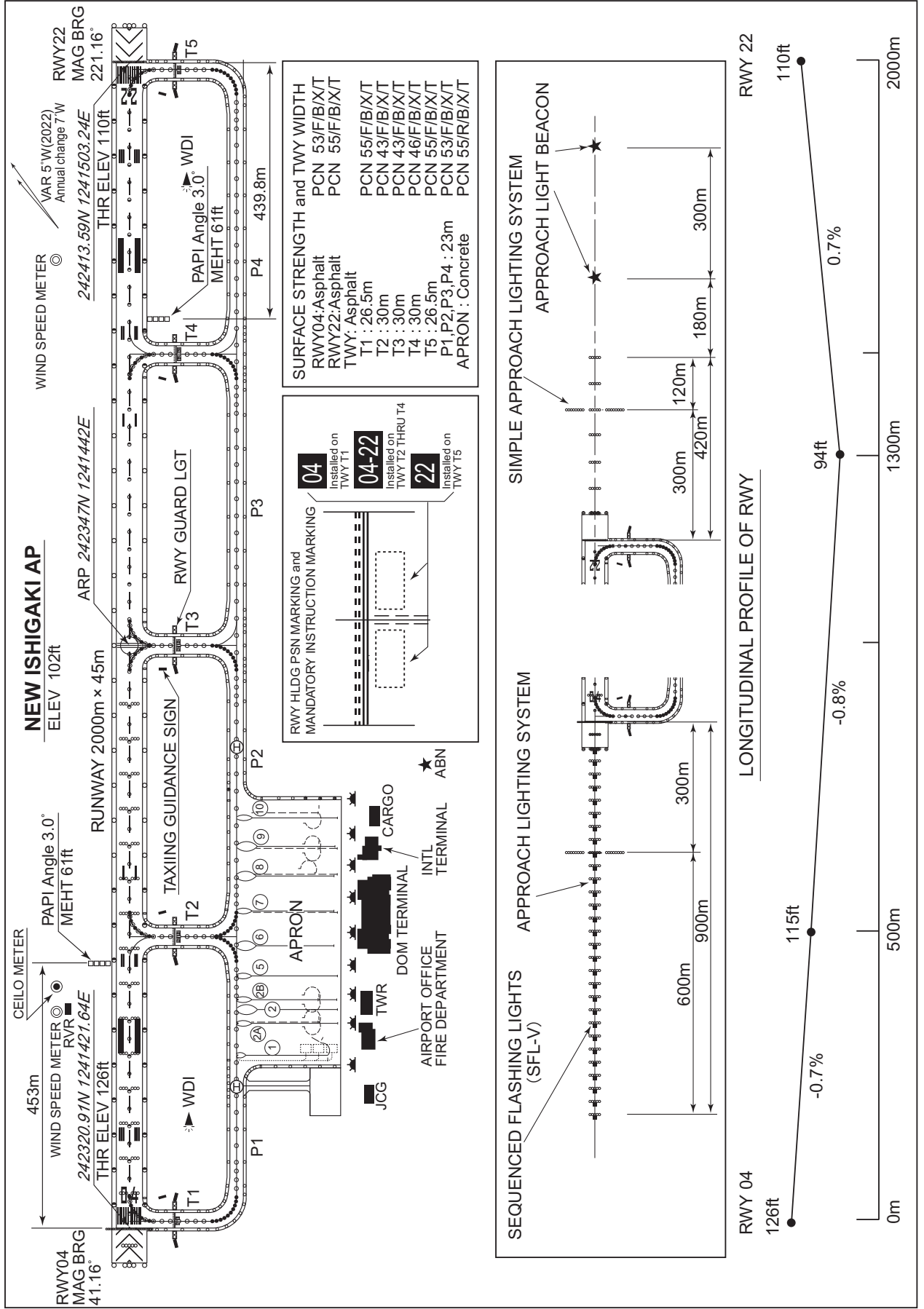


ROIG / NEW ISHIGAKI

AD CHART

CHANGE : ACFT lead-in line for SPOT 8 abolished.



**INTENTIONALLY LEFT BLANK**

STANDARD DEPARTURE CHART -INSTRUMENT

ROIG / NEW ISHIGAKI

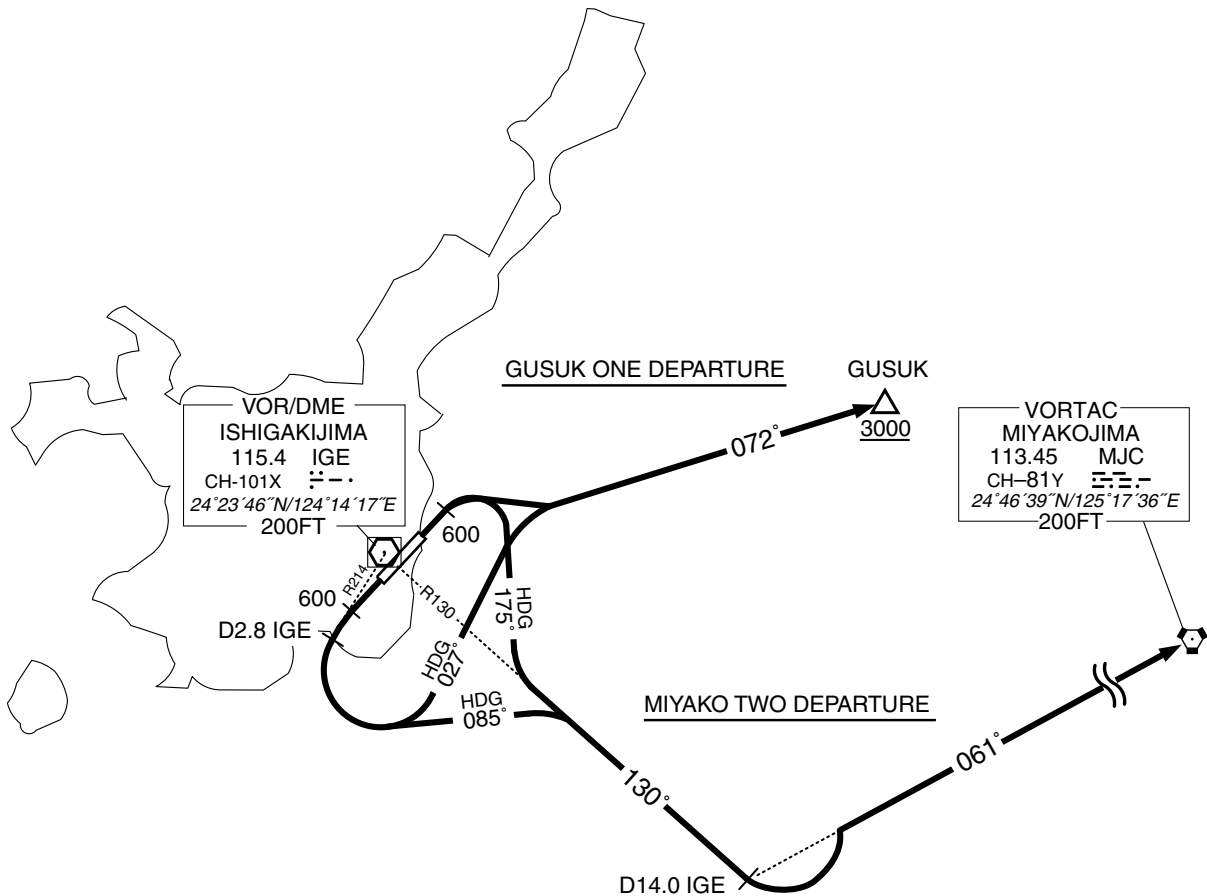
SID

GUSUK ONE DEPARTURE

RWY04 : Climb RWY HDG to 600FT, turn right,...  
 RWY22 : Climb RWY HDG to 600FT, via IGE R214 to IGE R214/2.8DME,turn left HDG027° ...  
 ... to intercept and proceed via IGE R072 to GUSUK.  
 Cross GUSUK at or above 3000FT.

MIYAKO TWO DEPARTURE

RWY04 : Climb RWY HDG to 600FT, turn right HDG175° ...  
 RWY22 : Climb RWY HDG to 600FT, via IGE R214 to IGE R214/2.8DME,turn left HDG085° ...  
 ... to intercept and proceed via IGE R130 to IGE 14.0DME, turn left, via MJC R241 to MJC VORTAC.



STANDARD DEPARTURE CHART -INSTRUMENT

ROIG / NEW ISHIGAKI

SID

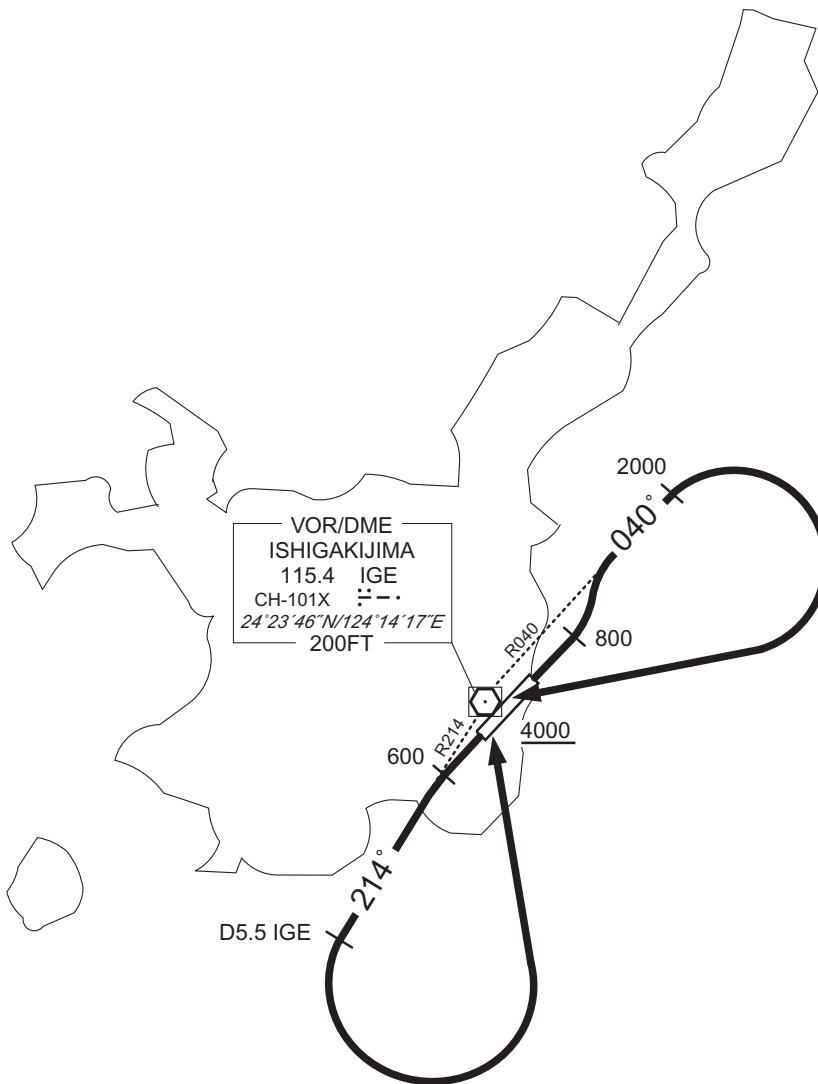
ISHIGAKI REVERSAL ONE DEPARTURE

RWY04 : Climb RWY HDG to 800FT, turn left to intercept and proceed via IGE R040 to 2000FT, turn right,direct to IGE VOR/DME.

Cross IGE VOR/DME at or above 4000FT.

RWY22 : Climb RWY HDG to 600FT, via IGE R214 to IGE R214/5.5DME, turn left, direct to IGE VOR/DME.

Cross IGE VOR/DME at or above 4000FT.



CHANGE : Description of PROC name.

STANDARD DEPARTURE CHART -INSTRUMENT

ROIG / NEW ISHIGAKI

SID

KOHAM ONE DEPARTURE

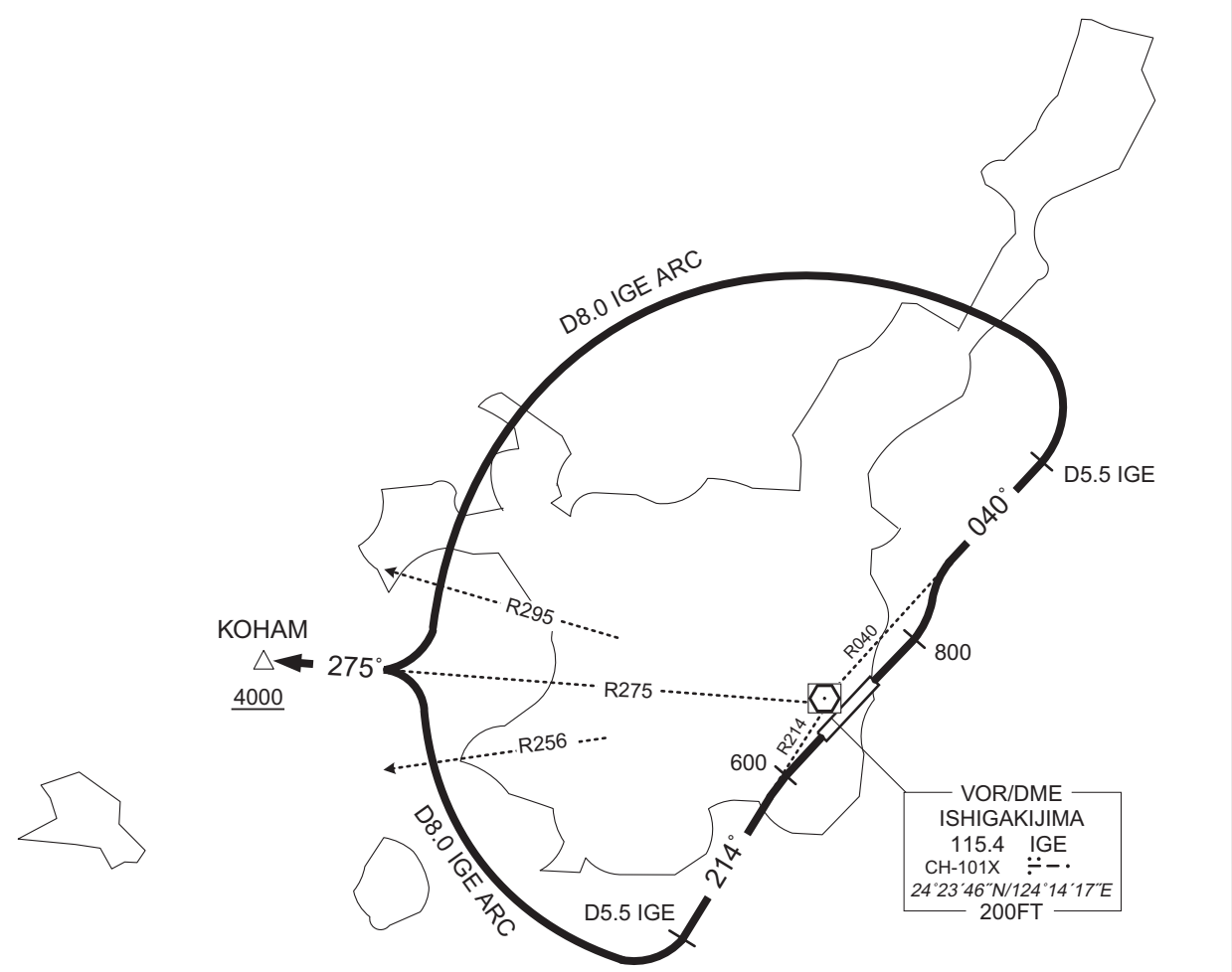
RWY04 : Climb RWY HDG to 800FT, turn left to intercept and proceed via IGE R040 to IGE R040/5.5DME, turn left, via IGE 8.0DME counterclockwise ARC,turn right to intercept and proceed via IGE R275 to KOHAM.

Cross KOHAM at or above 4000FT.

RWY22 : Climb RWY HDG to 600FT, via IGE R214 to IGE R214/5.5DME, turn right, via IGE 8.0DME clockwise ARC, turn left to intercept and proceed via IGE R275 to KOHAM.

Cross KOHAM at or above 4000FT.

CHANGE : Description of PROC name.



STANDARD DEPARTURE CHART -INSTRUMENT

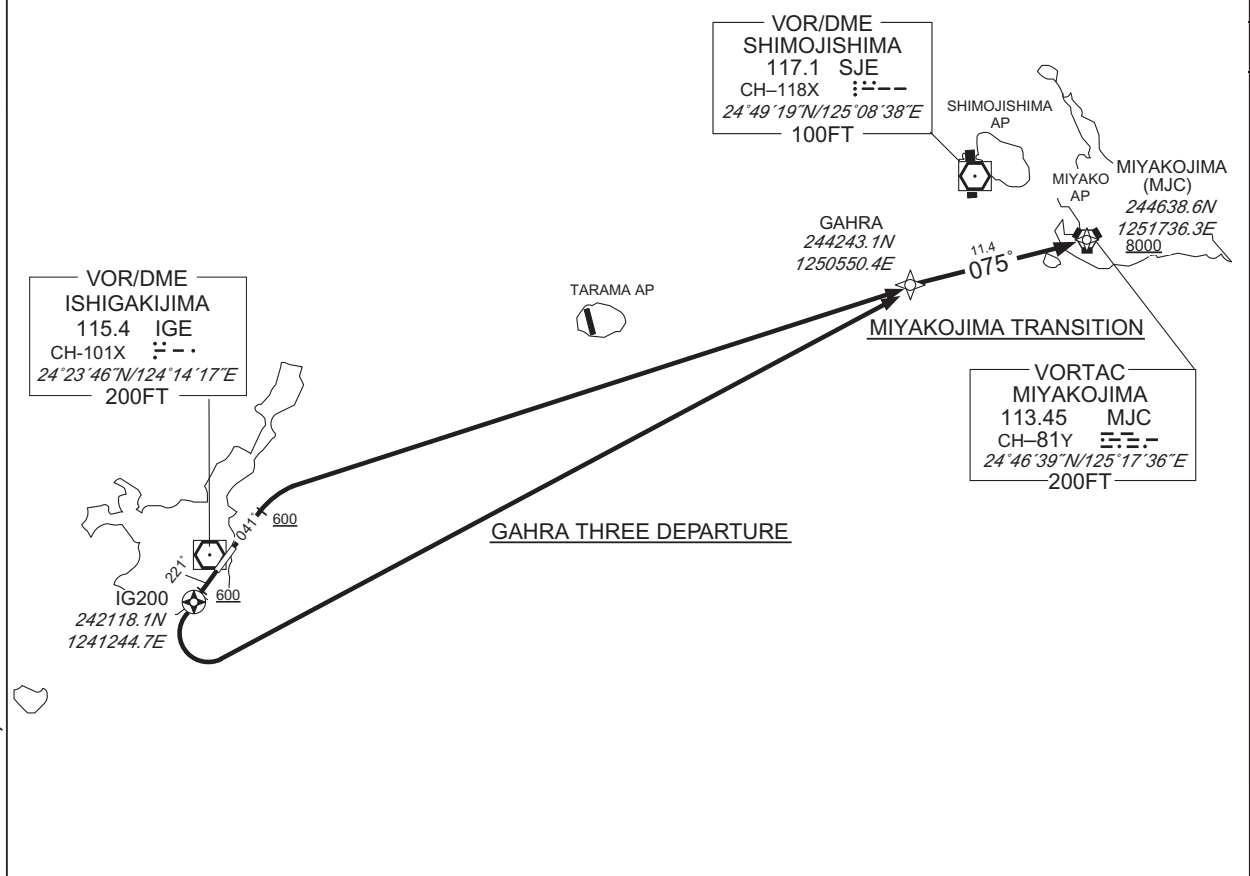
ROIG / NEW ISHIGAKI

RNAV SID and TRANSITION

GAHRA THREE DEPARTURE MIYAKOJIMA TRANSITION	RNP1
--	------

Note GNSS required.

VAR5°W



CHANGE : Navigation Specification(Basic RNP1 → RNP1).

**GAHRA THREE DEPARTURE**  
 RWY04 : Climb on HDG 041° at or above 600FT, turn right direct to GAHRA.  
 RWY22 : Climb on HDG 221° at or above 600FT, direct to IG200, turn left direct to GAHRA.

**MIYAKOJIMA TRANSITION**  
 From GAHRA, to MJC at or above 8000FT.

STANDARD DEPARTURE CHART -INSTRUMENT

ROIG / NEW ISHIGAKI

RNAV SID and TRANSITION

GAHRA THREE DEPARTURE

**RWY04**

Serial Number	Path Descriptor	Waypoint Identifier	Fly Over	Course °M(°T)	Magnetic Variation	Distance (NM)	Turn Direction	Altitude (FT)	Speed (KIAS)	Vertical Angle	Navigation Specification
001	VA	-	-	041 (035.9)	-4.9	-	-	+600	-	-	RNP1
002	DF	GAHRA	-	-	-4.9	-	R	-	-	-	RNP1

**RWY22**

Serial Number	Path Descriptor	Waypoint Identifier	Fly Over	Course °M(°T)	Magnetic Variation	Distance (NM)	Turn Direction	Altitude (FT)	Speed (KIAS)	Vertical Angle	Navigation Specification
001	VA	-	-	221 (215.9)	-4.9	-	-	+600	-	-	RNP1
002	DF	IG200	Y	-	-4.9	-	-	-	-	-	RNP1
003	DF	GAHRA	-	-	-4.9	-	L	-	-	-	RNP1

MIYAKOJIMA TRANSITION

Serial Number	Path Descriptor	Waypoint Identifier	Fly Over	Course °M(°T)	Magnetic Variation	Distance (NM)	Turn Direction	Altitude (FT)	Speed (KIAS)	Vertical Angle	Navigation Specification
001	IF	GAHRA	-	-	-4.9	-	-	-	-	-	RNP1
002	TF	MJC	-	075 (069.8)	-4.9	11.4	-	+8000	-	-	RNP1

CHANGE : Navigation Specification(Basic RNP1 → RNP1).

STANDARD DEPARTURE CHART -INSTRUMENT

ROIG / NEW ISHIGAKI

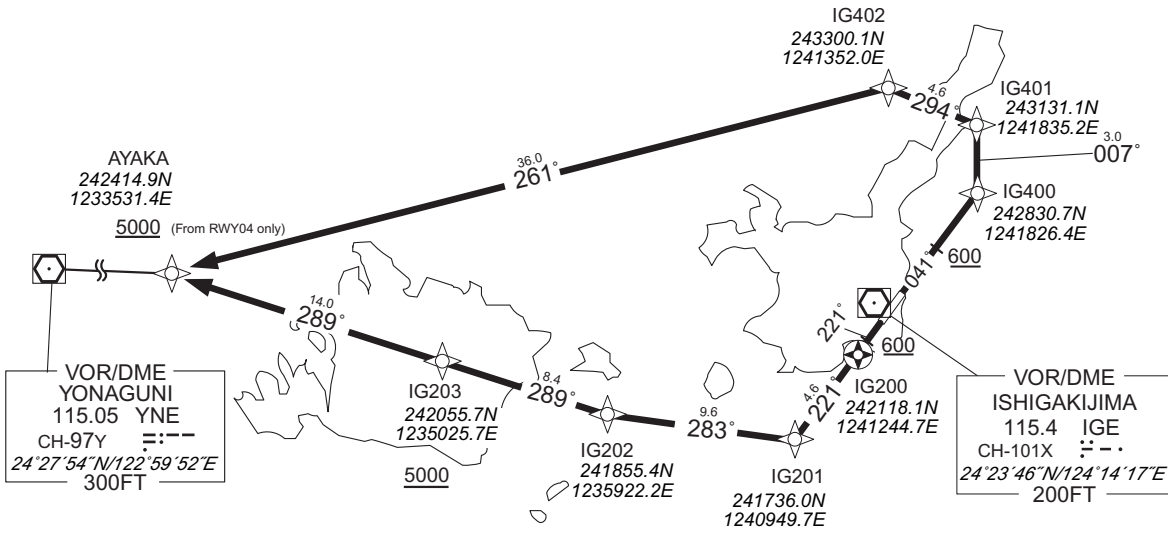
RNAV SID

AYAKA THREE DEPARTURE

RNP1

Note GNSS required.

VAR5°W



- RWY04 : Climb on HDG 041° at or above 600FT, direct to IG400, to IG401, to IG402, to AYAKA at or above 5000FT.
  - RWY22 : Climb on HDG 221° at or above 600FT, direct to IG200, to IG201, to IG202, to IG203 at or above 5000FT, to AYAKA.
- NOTE RWY04 : 4.0% climb gradient required up to 2000FT.  
OBST ALT 836FT at 9.53NM 021° FM end of RWY04.

CHANGE : Navigation Specification(Basic RNP1 → RNP1).



STANDARD DEPARTURE CHART -INSTRUMENT

ROIG / NEW ISHIGAKI

RNAV SID

AYAKA THREE DEPARTURE

RWY04

Serial Number	Path Descriptor	Waypoint Identifier	Fly Over	Course °M(°T)	Magnetic Variation	Distance (NM)	Turn Direction	Altitude (FT)	Speed (KIAS)	Vertical Angle	Navigation Specification
001	VA	-	-	041 (035.9)	-4.9	-	-	+600	-	-	RNP1
002	DF	IG400	-	-	-4.9	-	-	-	-	-	RNP1
003	TF	IG401	-	007 (002.6)	-4.9	3.0	-	-	-	-	RNP1
004	TF	IG402	-	294 (289.1)	-4.9	4.6	-	-	-	-	RNP1
005	TF	AYAKA	-	261 (256.1)	-4.9	36.0	-	+5000	-	-	RNP1

RWY22

Serial Number	Path Descriptor	Waypoint Identifier	Fly Over	Course °M(°T)	Magnetic Variation	Distance (NM)	Turn Direction	Altitude (FT)	Speed (KIAS)	Vertical Angle	Navigation Specification
001	VA	-	-	221 (215.9)	-4.9	-	-	+600	-	-	RNP1
002	DF	IG200	Y	-	-4.9	-	-	-	-	-	RNP1
003	TF	IG201	-	221 (215.7)	-4.9	4.6	-	-	-	-	RNP1
004	TF	IG202	-	283 (277.9)	-4.9	9.6	-	-	-	-	RNP1
005	TF	IG203	-	289 (283.9)	-4.9	8.4	-	+5000	-	-	RNP1
006	TF	AYAKA	-	289 (283.8)	-4.9	14.0	-	-	-	-	RNP1

CHANGE : Navigation Specification(Basic RNP1 → RNP1).

STANDARD ARRIVAL CHART-INSTRUMENT

ROIG / NEW ISHIGAKI

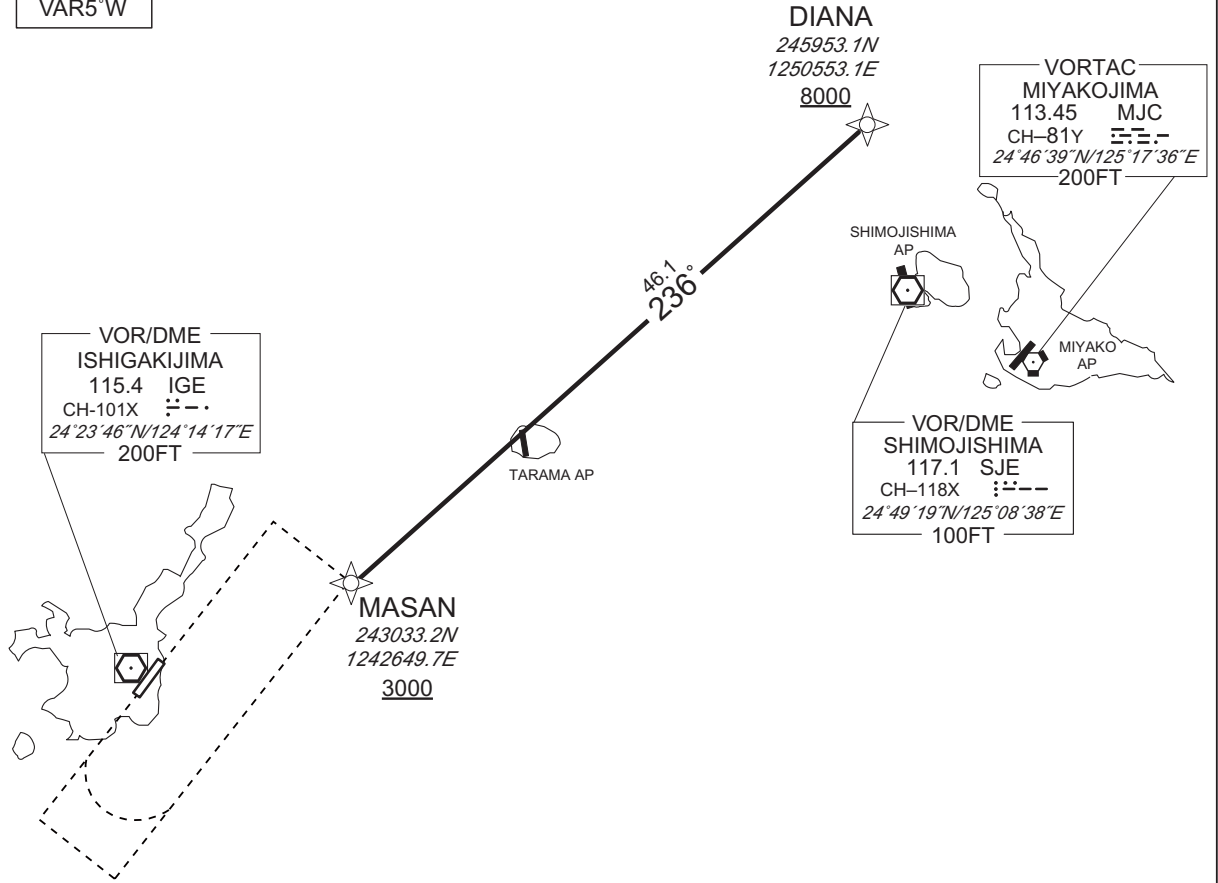
RNAV STAR RWY04 / RWY22

MASAN ARRIVAL

RNP1

Note GNSS required.

VAR5°W



From DIANA at or above 8000FT, to MASAN at or above 3000FT.

Serial Number	Path Descriptor	Waypoint Identifier	Fly Over	Course °M(T)	Magnetic Variation	Distance (NM)	Turn Direction	Altitude (FT)	Speed (KIAS)	Vertical Angle	Navigation Specification
001	IF	DIANA	—	—	-5.1	—	—	+8000	—	—	RNP1
002	TF	MASAN	—	236 (230.5)	-5.1	46.1	—	+3000	—	—	RNP1

CHANGE : Navigation Specification(Basic RNP1 → RNP1).

STANDARD ARRIVAL CHART-INSTRUMENT

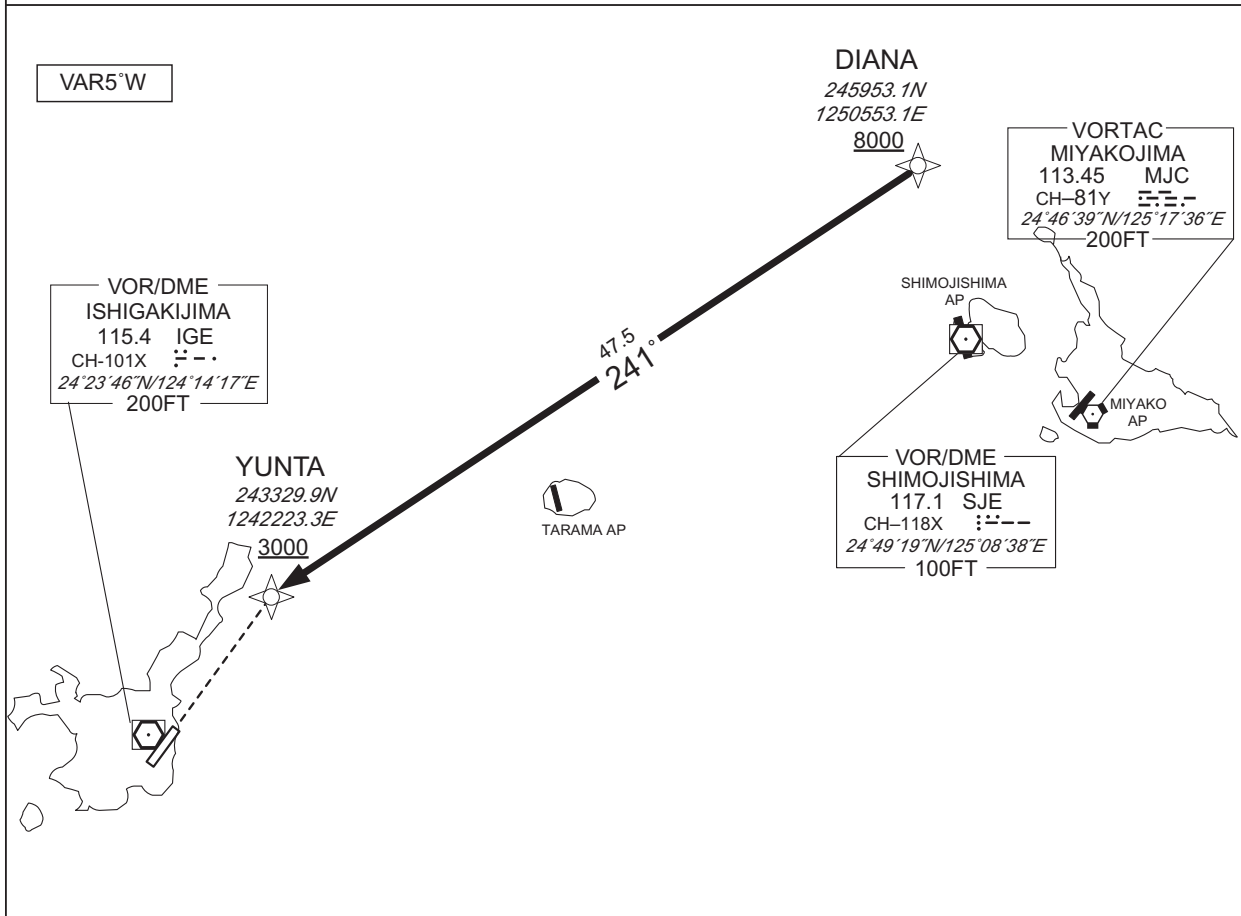
ROIG / NEW ISHIGAKI

RNAV STAR RWY22

YUNTA NORTH ARRIVAL

RNP1

Note GNSS required.



From DIANA at or above 8000FT, to YUNTA at or above 3000FT.

CHANGE : Navigation Specification (Basic RNP1 → RNP1).

Serial Number	Path Descriptor	Waypoint Identifier	Fly Over	Course °M(°T)	Magnetic Variation	Distance (NM)	Turn Direction	Altitude (FT)	Speed (KIAS)	Vertical Angle	Navigation Specification
001	IF	DIANA	—	—	-4.9	—	—	+8000	—	—	RNP1
002	TF	YUNTA	—	241 (236.4)	-4.9	47.5	—	+3000	—	—	RNP1

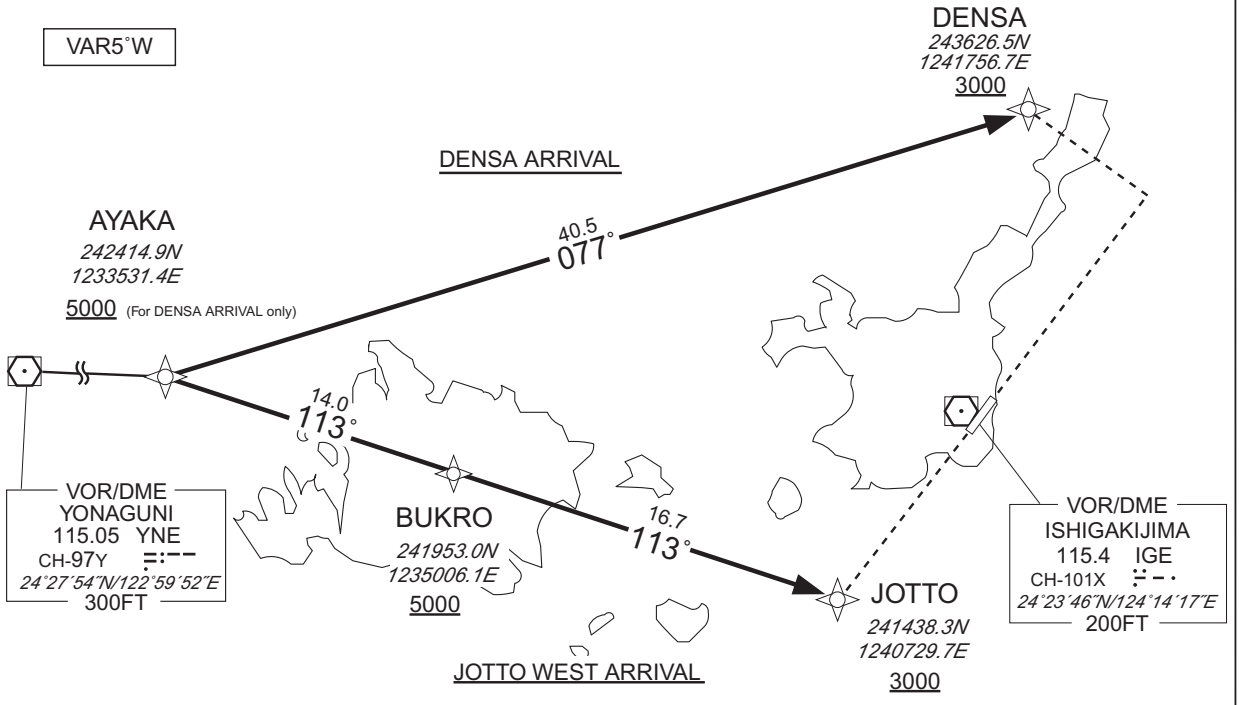
STANDARD ARRIVAL CHART-INSTRUMENT

ROIG / NEW ISHIGAKI

RNAV STAR RWY04/RWY22

DENSA ARRIVAL / JOTTO WEST ARRIVAL	RNP1
------------------------------------	------

Note GNSS required.



DENSA ARRIVAL

From AYAKA at or above 5000FT, to DENSA at or above 3000FT.

Serial Number	Path Descriptor	Waypoint Identifier	Fly Over	Course °M(°T)	Magnetic Variation	Distance (NM)	Turn Direction	Altitude (FT)	Speed (KIAS)	Vertical Angle	Navigation Specification
001	IF	AYAKA	—	—	-4.9	—	—	+5000	—	—	RNP1
002	TF	DENSA	—	077 (072.3)	-4.9	40.5	—	+3000	—	—	RNP1

JOTTO WEST ARRIVAL

From AYAKA, to BUKRO at or above 5000FT, to JOTTO at or above 3000FT.

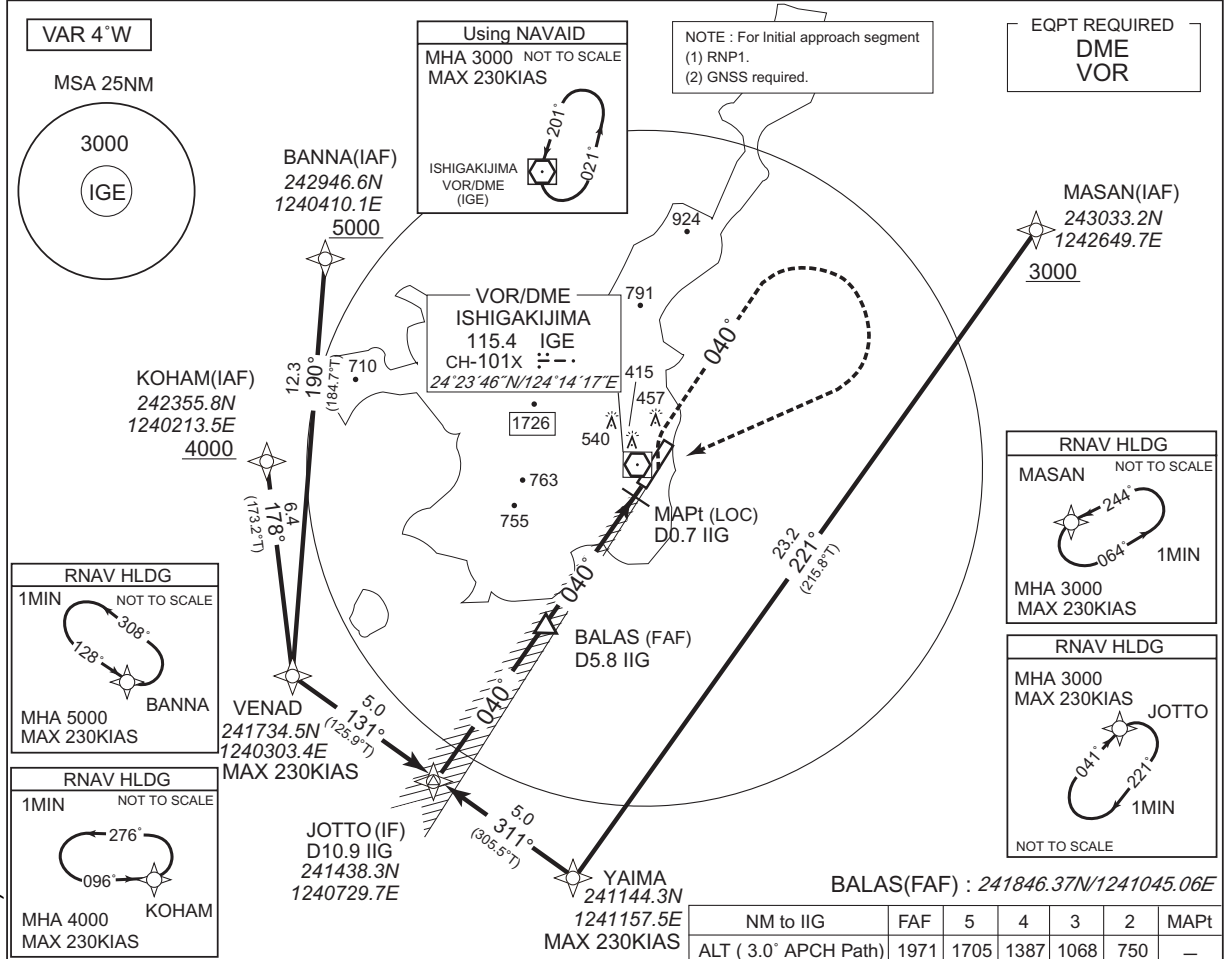
Serial Number	Path Descriptor	Waypoint Identifier	Fly Over	Course °M(°T)	Magnetic Variation	Distance (NM)	Turn Direction	Altitude (FT)	Speed (KIAS)	Vertical Angle	Navigation Specification
001	IF	AYAKA	—	—	-4.9	—	—	—	—	—	RNP1
002	TF	BUKRO	—	113 (108.1)	-4.9	14.0	—	+5000	—	—	RNP1
003	TF	JOTTO	—	113 (108.2)	-4.9	16.7	—	+3000	—	—	RNP1

CHANGE : Navigation Specification(Basic RNP1 → RNP1).

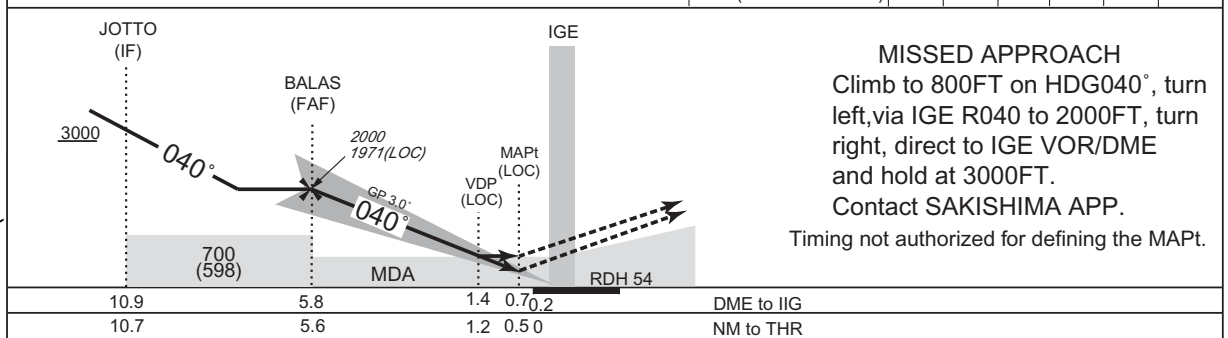
INSTRUMENT APPROACH CHART

ROIG / NEW ISHIGAKI ILS Z or LOC Z RWY04

SAKISHIMA APP 120.3 – 121.2	ILS - LOC 110.75 IIG ILS - GP 330.05 ILS - DME CH-44Y	ISHIGAKI TOWER 118.0 – 126.2	RADAR AVBL ATIS 128.675
--------------------------------	--	---------------------------------	----------------------------



CHANGE : Navigation Specification(Basic RNP1 → RNP1).



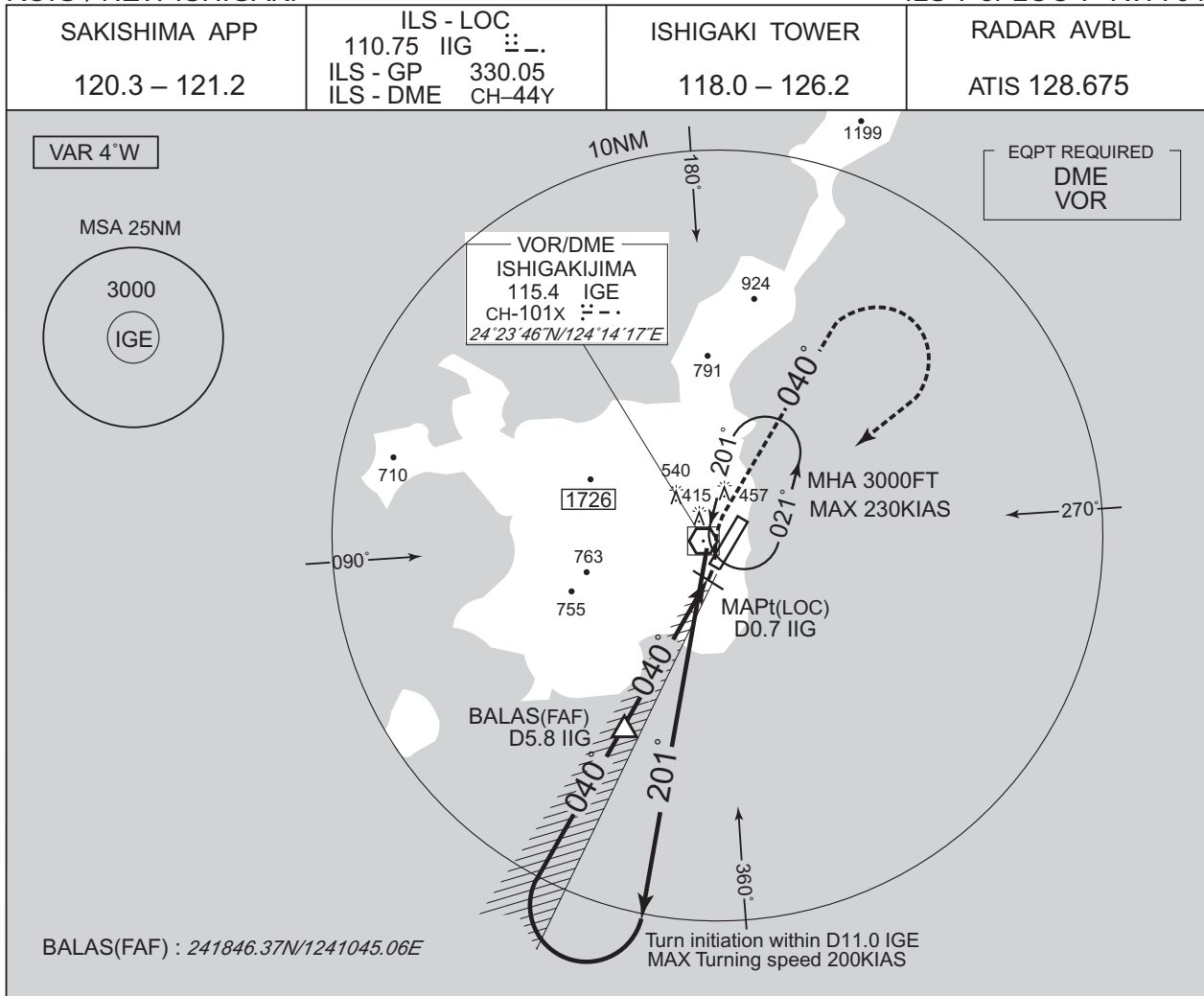
Missed APCH climb gradient MNM 5.0%					
MINIMA		THR elev. 126		AD elev. 102	
CAT	CAT I		LOC		CIRCLING
	DA(H)	RVR/CMV	MDA(H)	RVR/CMV	MDA(H) VIS
A	326(200)	550	530(428)	900	580(478) 1600
B				1000	
C				1400	660(558) 2400
D	336(210)	600		1400	3200

MINIMA with Missed APCH climb gradient of 2.5% are not established.  
Circling to EAST side of RWY only.

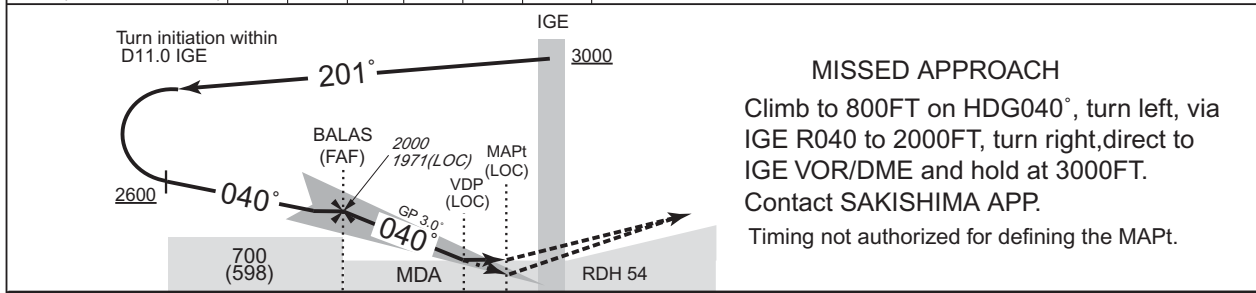
INSTRUMENT APPROACH CHART

ROIG / NEW ISHIGAKI

ILS Y or LOC Y RWY04



NM to IIG	FAF	5	4	3	2	MAPt
ALT (3.0° APCH Path)	1971	1705	1387	1068	750	—



**MISSED APPROACH**  
Climb to 800FT on HDG040°, turn left, via IGE R040 to 2000FT, turn right, direct to IGE VOR/DME and hold at 3000FT. Contact SAKISHIMA APP. Timing not authorized for defining the MAPt.

	5.8	1.4	0.7	DME to IIG
	5.6	1.2	0.50	NM to THR

Missed APCH climb gradient MNM 5.0%

MINIMA		THR elev. 126		AD elev. 102		
CAT	CAT I		LOC		CIRCLING	
	DA(H)	RVR/CMV	MDA(H)	RVR/CMV	MDA(H)	VIS
A	326(200)	550	530(428)	900	580(478)	1600
B				1000		
C				1400	660(558)	2400
D	336(210)	600				3200

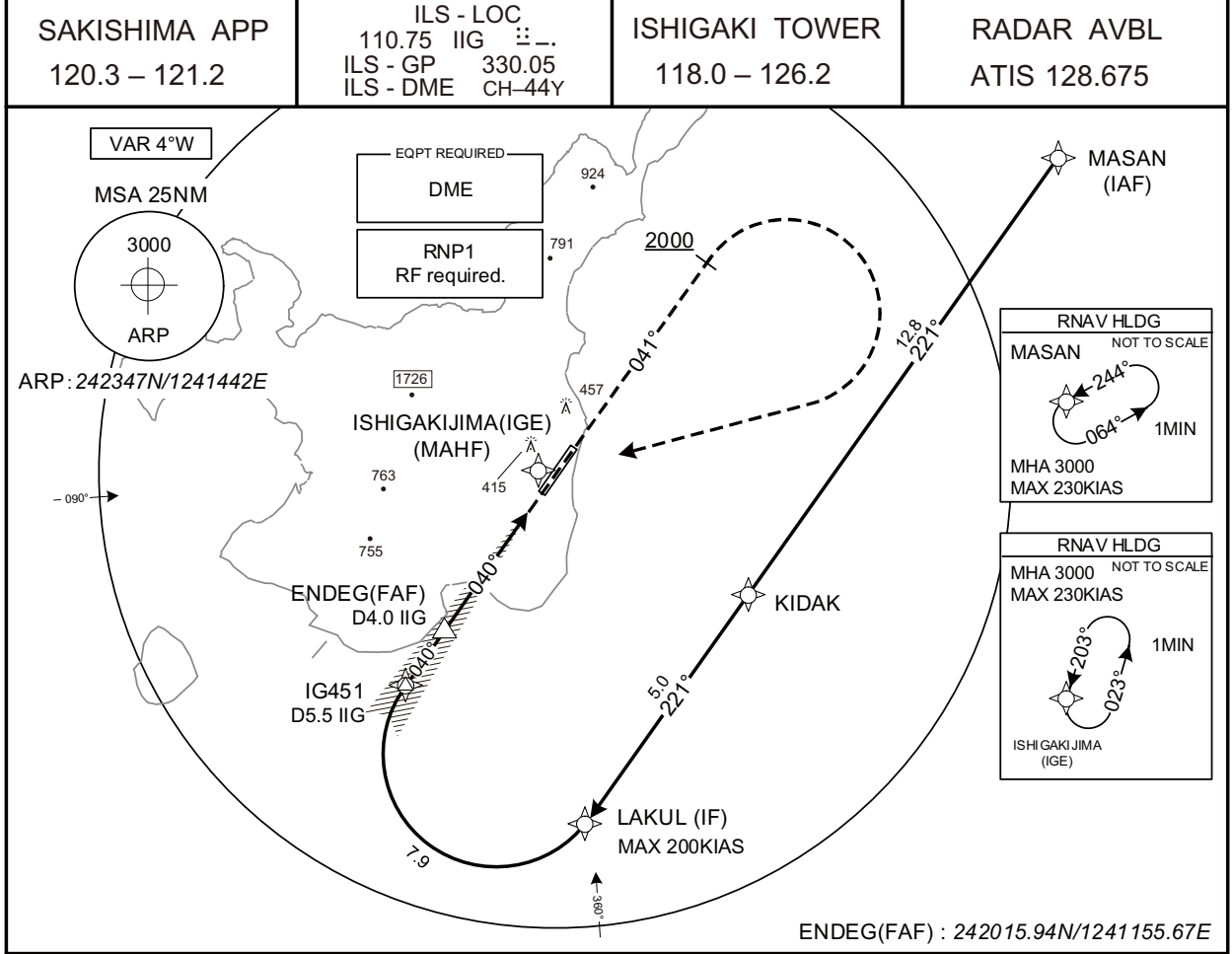
MINIMA with Missed APCH climb gradient of 2.5% are not established. Circling to EAST side of RWY only.

CHANGE : Description of VAR.

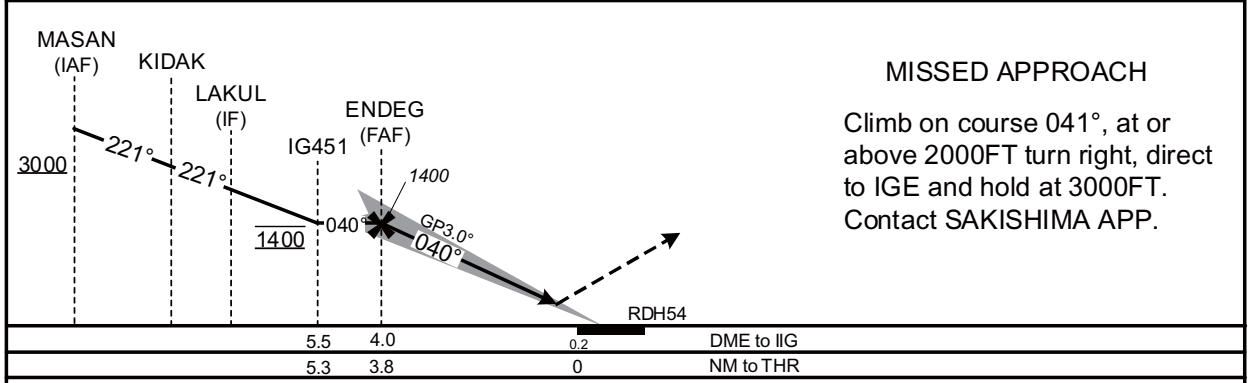
INSTRUMENT APPROACH CHART

ROIG / NEW ISHIGAKI

ILS X RWY04



CHANGE : Navigation Specification(Basic RNP1 → RNP1).



Missed APCH climb gradient MNM 5.0%

MINIMA		THR elev. 126	AD elev. 102	
CAT	CAT I		CIRCLING	
	DA(H)	RVR/CMV	MDA(H)	VIS
A	326(200)	550	580(478)	1600
B				2400
C				3200
D	336(210)	600	660(558)	3200

MINIMA with Missed APCH climb gradient of 2.5% are not established.  
Circling to EAST side of RWY only.

INSTRUMENT APPROACH CHART

ROIG / NEW ISHIGAKI

ILS X RWY04

Coding Table

Serial Number	Path Descriptor	Waypoint Identifier	Fly Over	Course °M(°T)	Magnetic Variation	Distance (NM)	Turn Direction	Altitude (FT)	Speed (KIAS)	Vertical Angle	Navigation Specification
001	IF	MASAN	-	-	-5.1	-	-	+3000	-	-	RNP1
002	TF	KIDAK	-	221 (215.8)	-5.1	12.8	-	-	-	-	RNP1
003	TF	LAKUL	-	221 (215.7)	-5.1	5.0	-	-	-200	-	RNP1
004	RF Center: IGRF2 r=2.50NM	IG451	-	-	-5.1	7.9	R	1400	-	-	RNP1
001	CA	-	-	041 (035.7)	-5.1	-	-	+2000	-	-	RNP1
002	DF	IGE	-	-	-5.1	-	R	3000	-	-	RNP1

Path	Waypoint Identifier	Inbound Course °M(°T)	Magnetic Variation	Outbound Time (MIN)	Turn Direction	Minimum Altitude (FT)	Maximum Altitude (FT)	Speed (KIAS)	Navigation Specification
Hold	MASAN	244 (239.3)	-5.1	1.0 (-14000)	L	3000	FL140	-230 (-14000)	RNP1
Hold	IGE	203 (197.8)	-5.1	1.0 (-14000)	L	3000	FL140	-230 (-14000)	RNP1

Waypoint Coordinates

Waypoint Identifier	Coordinates	RF Arc Center Identifier	Coordinates
MASAN	243033.23N / 1242649.67E	IGRF2	241734.58N / 1241311.07E
KIDAK	242010.28N / 1241836.67E		
LAKUL	241606.39N / 1241524.14E		
IG451	241902.74N / 1241057.95E		
IGE	242345.64N / 1241416.63E		

CHANGE : Navigation Specification(Basic RNP1 → RNP1).

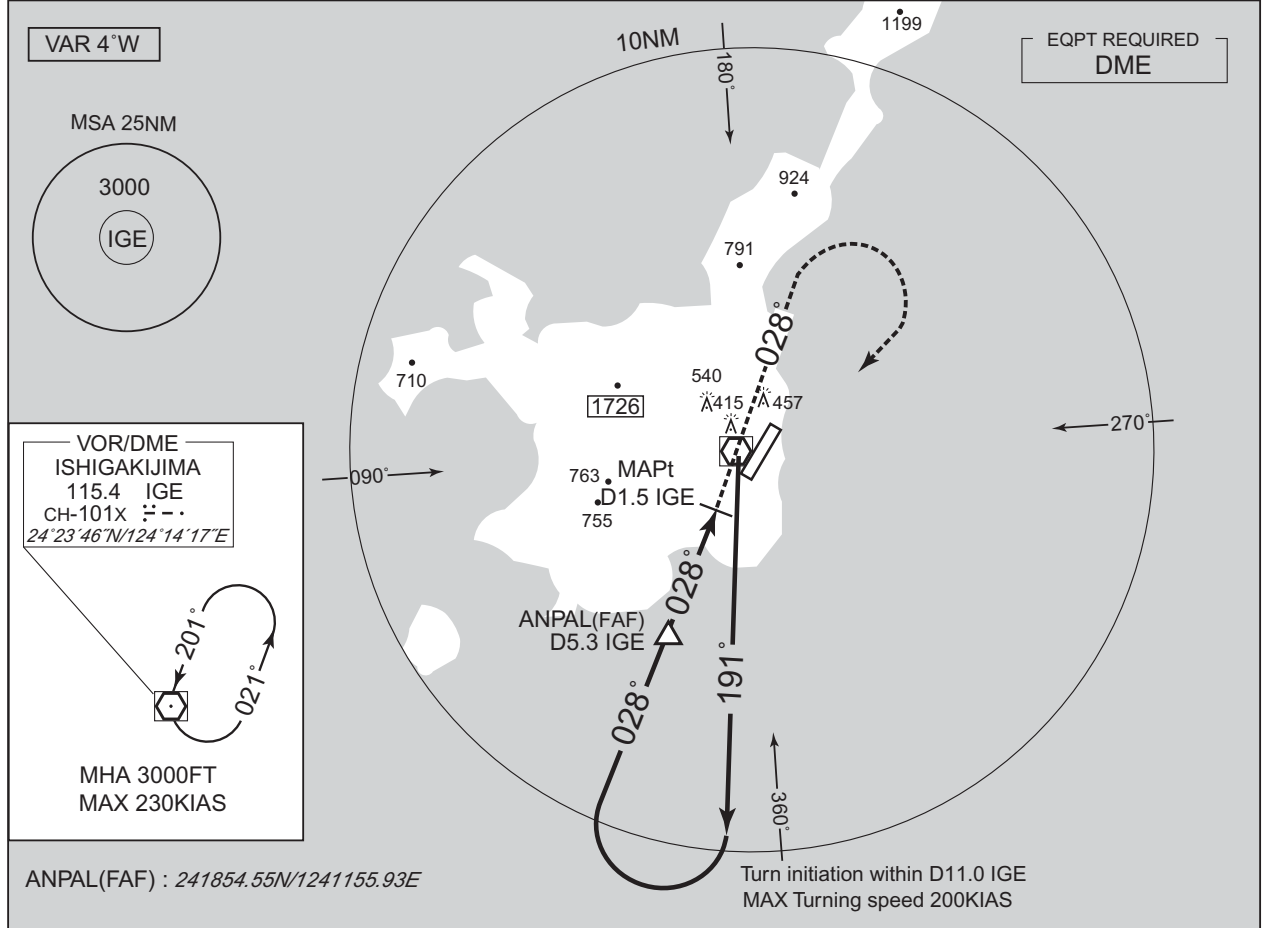


INSTRUMENT APPROACH CHART

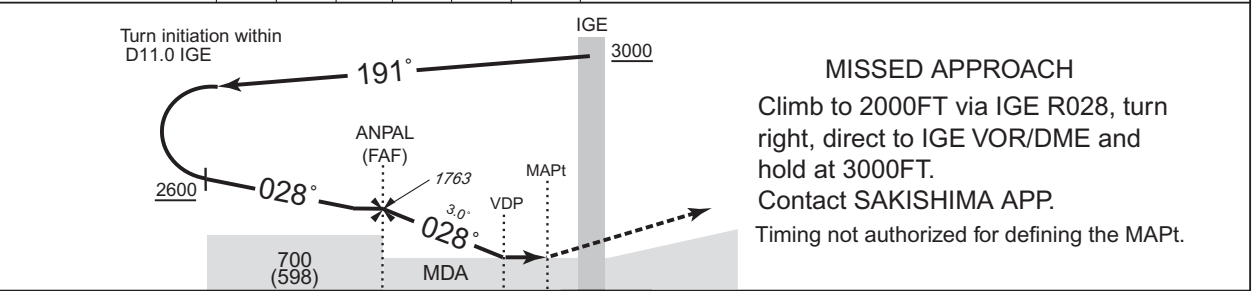
ROIG / NEW ISHIGAKI

VOR RWY04

SAKISHIMA APP 120.3 – 121.2	ISHIGAKIJIMA VOR/DME 115.4 IGE CH-101X 24°23'46"N/124°14'17"E	ISHIGAKI TOWER 118.0 – 126.2	RADAR AVBL ATIS 128.675
--------------------------------	--	---------------------------------	----------------------------



NM to IGE	FAF	5	4	3	2	MAPt
ALT ( 3.0° APCH Path)	1763	1666	1347	1029	711	—



5.3	1.5	1.5	DME to IGE
5.0	1.2	1.1 0	NM to THR

MINIMA		THR elev. 126		AD elev. 102	
CAT			CIRCLING		VIS
	MDA(H)	RVR/CMV	MDA(H)		
A	540(438)	900	580(478)	1600	
B		1000			
C		1400	660(558)	2400	
D					3200

CHANGE : Description of VAR.

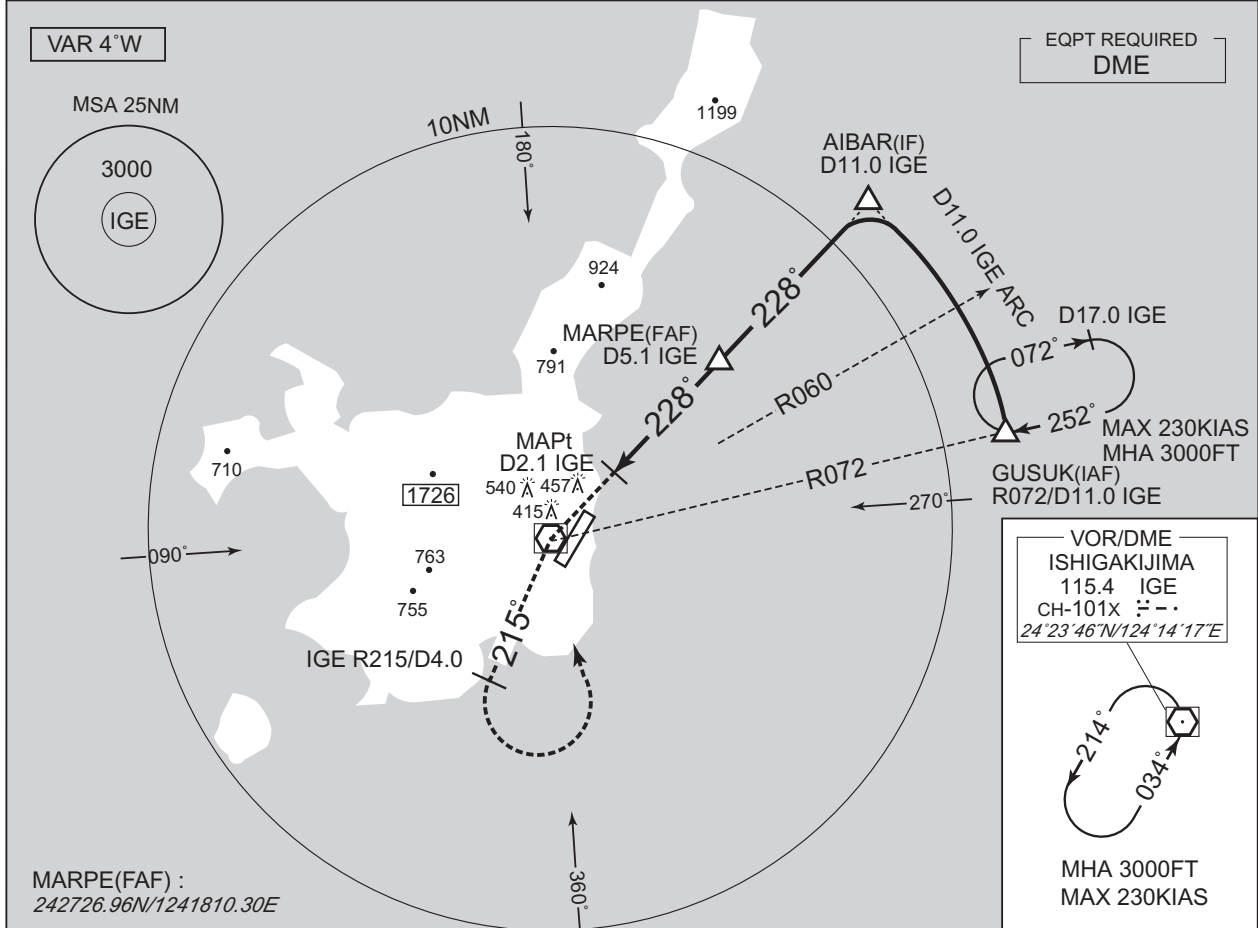
Circling to EAST side of RWY only.

INSTRUMENT APPROACH CHART

ROIG / NEW ISHIGAKI

VOR Z RWY22

SAKISHIMA APP 120.3 – 121.2	ISHIGAKIJIMA VOR/DME 115.4 IGE CH-101X 24°23'46"N/124°14'17"E	ISHIGAKI TOWER 118.0 – 126.2	RADAR AVBL ATIS 128.675
--------------------------------	--	---------------------------------	----------------------------

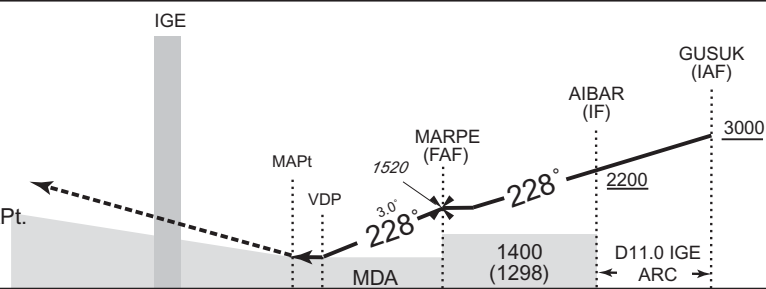


MAPt	3	4	5	FAF	NM to IGE
—	845	1163	1481	1520	ALT (3.0° APCH Path)

MISSED APPROACH

Climb via IGE R215 to IGE  
4.0DME, turn left, direct to IGE  
VOR/DME and hold at 3000FT.  
Contact SAKISHIMA APP.

Timing not authorized for defining the MAPt.



DME to IGE	2.1	2.2	5.1	11.0	
NM to THR	0	1.3	1.4	4.3	10.2

MINIMA	THR elev. 110		AD elev. 102	
	MDA(H)	CMV	MDA(H)	VIS
A	580(478)	1400	580(478)	1600
B		1500		
C		1600	660(558)	2400
D		1800		

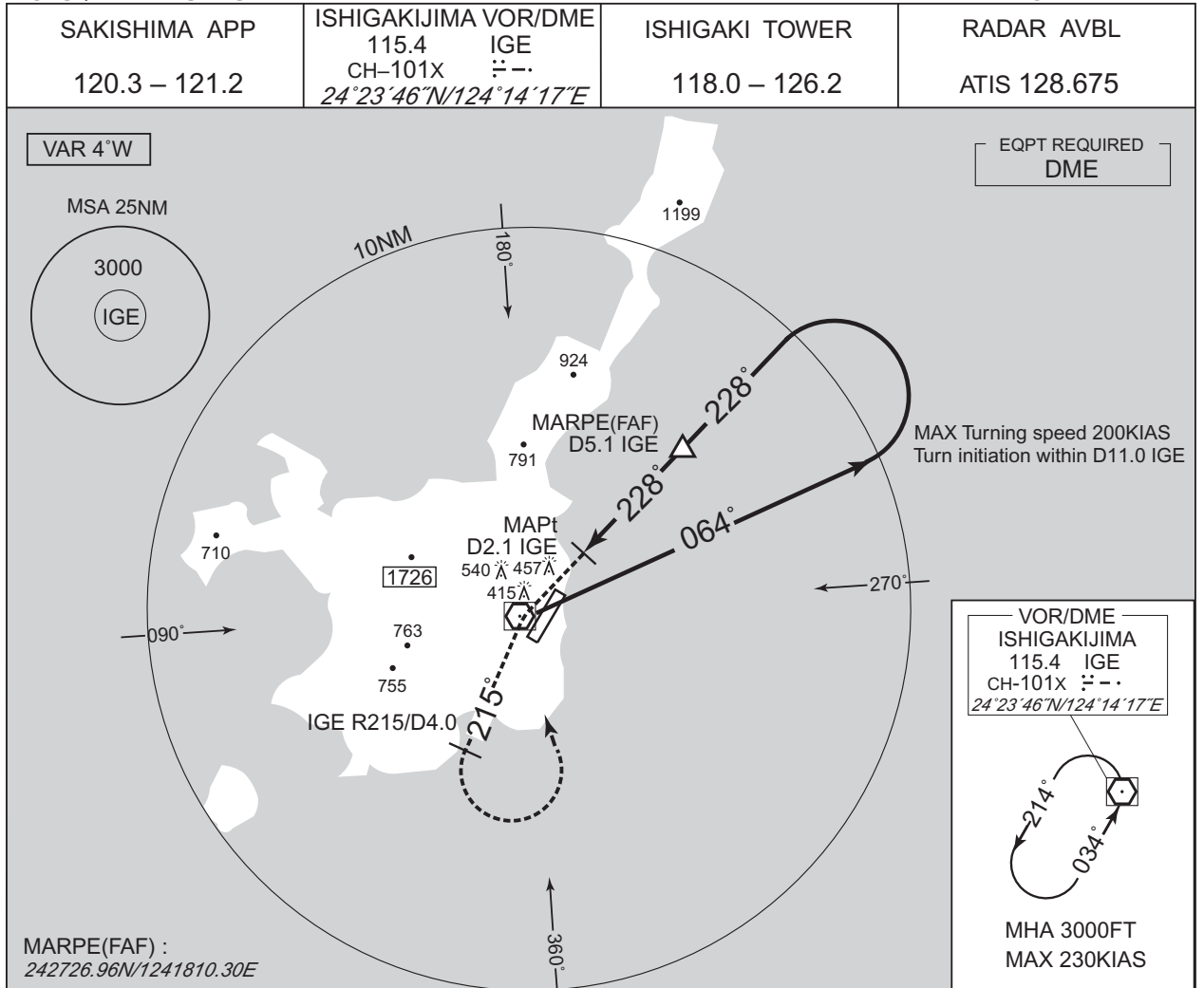
Circling to EAST side of RWY only.

CHANGE : Description of VAR.

INSTRUMENT APPROACH CHART

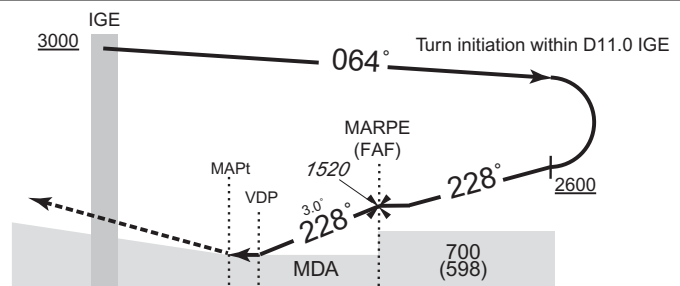
ROIG / NEW ISHIGAKI

VOR Y RWY22



MAPt	3	4	5	FAF	NM to IGE
—	845	1163	1481	1520	ALT ( 3.0° APCH Path)

**MISSED APPROACH**  
Climb via IGE R215 to IGE  
4.0DME, turn left, direct to IGE  
VOR/DME and hold at 3000FT.  
Contact SAKISHIMA APP.  
Timing not authorized for defining the MAPt.



DME to IGE	2.1	2.2	5.1
NM to THR	0	1.3	1.4
			4.3

MINIMA		THR elev. 110		AD elev. 102	
CAT			CIRCLING		
	MDA(H)	CMV	MDA(H)	VIS	
A	580(478)	1400	580(478)	1600	
B		1500			
C		1600	660(558)	2400	
D		1800			

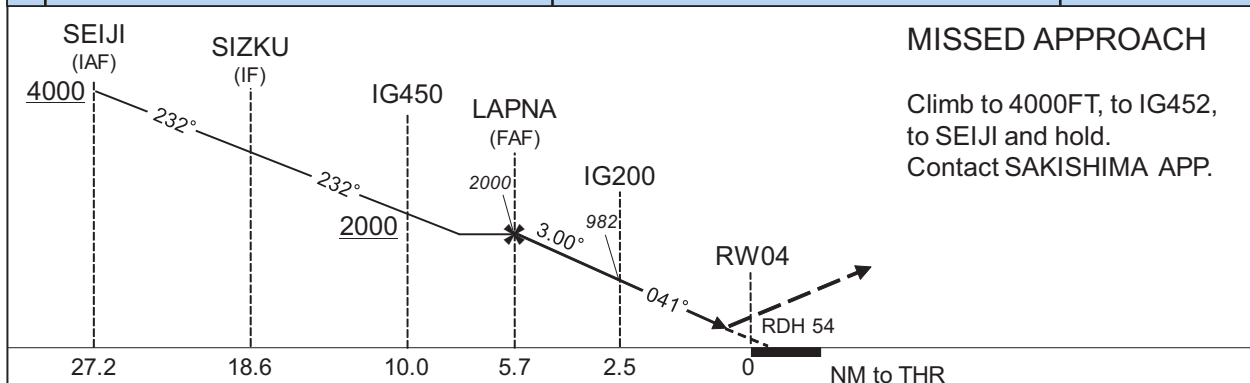
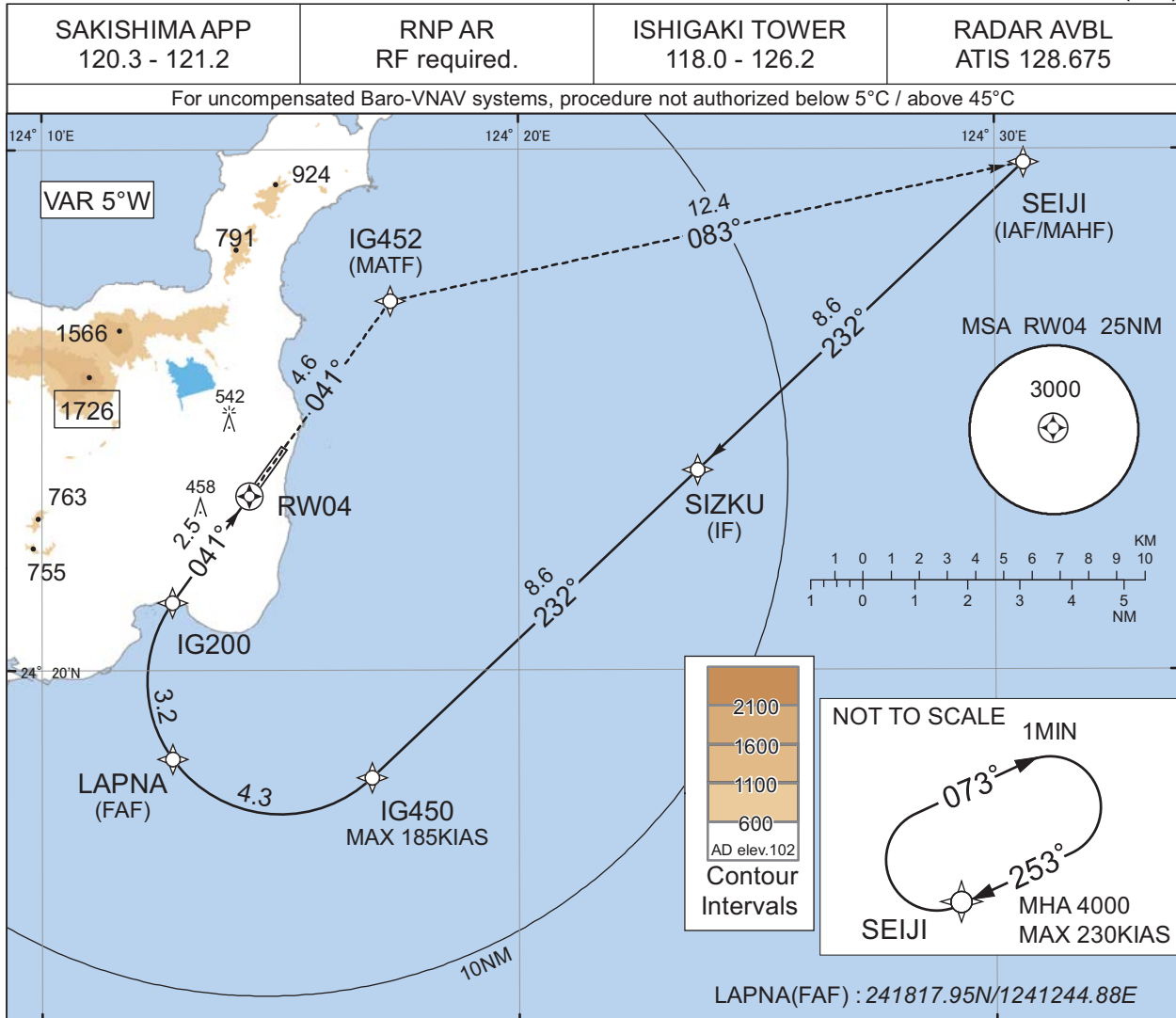
Circling to EAST side of RWY only.

CHANGE : Description of VAR.

INSTRUMENT APPROACH CHART

ROIG / NEW ISHIGAKI

RNP RWY04(AR)



**MISSED APPROACH**

Climb to 4000FT, to IG452, to SEIJI and hold.  
Contact SAKISHIMA APP.

CHANGE : Description of VAR.

Missed APCH climb gradient MNM 5.0%

MINIMA	THR elev. 126	AD elev. 102
RNP 0.30		
CAT	DA(H)	RVR/CMV
A	-	-
B	-	-
C	545(419)	1000
D	567(441)	1400

MINIMA with Missed APCH climb gradient of 2.5% are not established.

Authorization Required

INSTRUMENT APPROACH CHART

ROIG / NEW ISHIGAKI

RNP RWY04(AR)

Coding Table

Serial Number	Path Descriptor	Waypoint Identifier	Fly Over	Course °M(°T)	Magnetic Variation	Distance (NM)	Turn Direction	Altitude (FT)	Speed (KIAS)	VPA/ RDH (°/FT)	RNP Value
001	IF	SEIJI	-	-	-5.0	-	-	+4000	-	-	-
002	TF	SIZKU	-	232 (226.6)	-5.0	8.6	-	-	-	-	1.0
003	TF	IG450	-	232 (226.6)	-5.0	8.6	-	+2000	-185	-	1.0
004	RF Center: IGRF1 r=2.55NM	LAPNA	-	-	-5.0	4.3	R	2000	-	-	1.0
005	RF Center: IGRF1 r=2.55NM	IG200	-	-	-5.0	3.2	R	982	-	-3.00	0.3
006	TF	RW04	Y	041 (035.7)	-5.0	2.5	-	180	-	-3.00/54	0.3
007	TF	IG452	-	041 (035.7)	-5.0	4.6	-	-	-	-	1.0
008	TF	SEIJI	-	083 (077.6)	-5.0	12.4	-	4000	-	-	1.0

Path	Waypoint Identifier	Inbound Course °M(°T)	Magnetic Variation	Outbound Time (MIN)	Turn Direction	Minimum Altitude (FT)	Maximum Altitude (FT)	Speed (KIAS)	RNP Value
Hold	SEIJI	253 (248.2)	-5.0	1.0 (-14000)	R	4000	FL140	-230 (-14000)	1.0

Waypoint Coordinates

Waypoint Identifier	Coordinates	RF Arc Center Identifier	Coordinates
SEIJI	242944.43N/1243036.57E	IGRF1	241948.12N/1241500.55E
SIZKU	242350.59N/1242345.74E		
IG450	241756.41N/1241655.55E		
LAPNA	241817.95N/1241244.88E		
IG200	242118.09N/1241244.70E		
RW04	242320.91N/1241421.64E		
IG452	242705.63N/1241719.18E		

INSTRUMENT APPROACH CHART

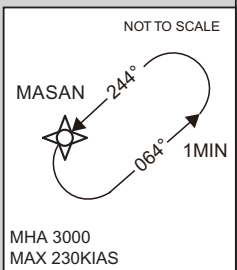
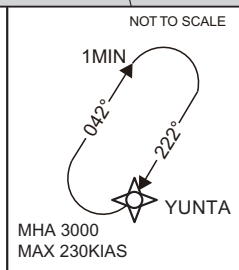
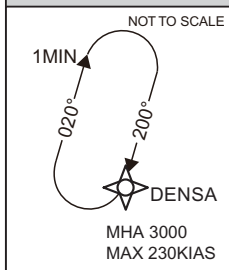
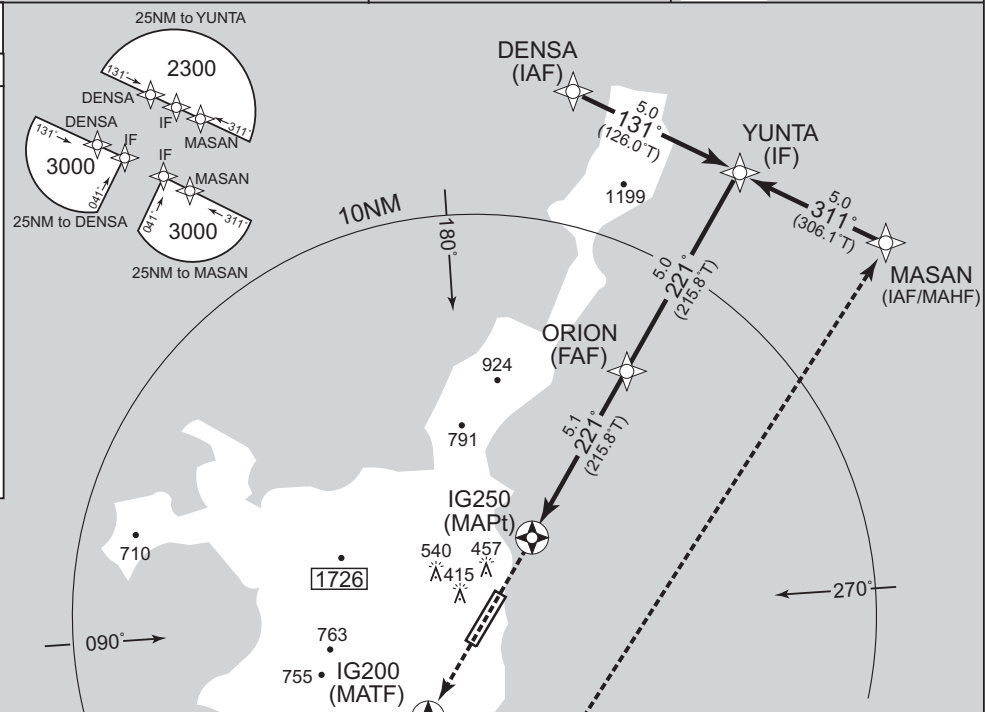
ROIG / NEW ISHIGAKI

RNP Z RWY22

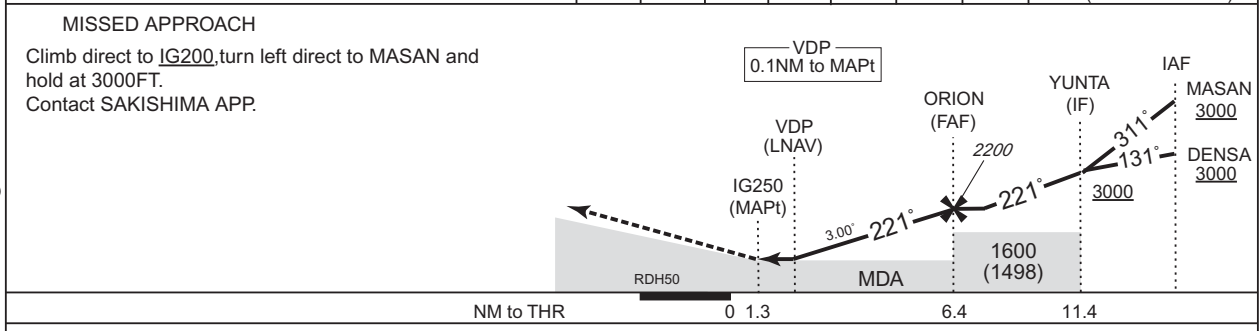
SAKISHIMA APP 120.3 – 121.2	RNP APCH	ISHIGAKI TOWER 118.0 – 126.2	RADAR AVBL ATIS 128.675
--------------------------------	----------	---------------------------------	----------------------------

Baro-VNAV not authorized below 10°C  
VAR 5°W

MASAN (IAF/MAHF)	243033.23N 1242649.67E
DENSA (IAF)	243626.47N 1241756.68E
YUNTA (IF)	243329.91N 1242223.28E
ORION (FAF)	242926.13N 1241910.28E
IG250 (MAPt)	242517.00N 1241553.33E
IG200 (MATF)	242118.09N 1241244.70E



MAPt	1	2	3	4	5	FAF	NM to Next Fix
—	892	1210	1528	1847	2165	2200	ALT ( 3.0° APCH Path)



CAT	MINIMA		THR elev.110		AD elev.102	
	DA(H)	CMV	MDA(H)	CMV	MDA (H)	VIS
A	580(470)	1400	580(478)	1400	580(478)	1600
B		1500		1500		
C		1600		1600		
D		1800		1800		

Circling to EAST side of RWY only.

CHANGE : Missed APCH for using VOR/DME abolished.

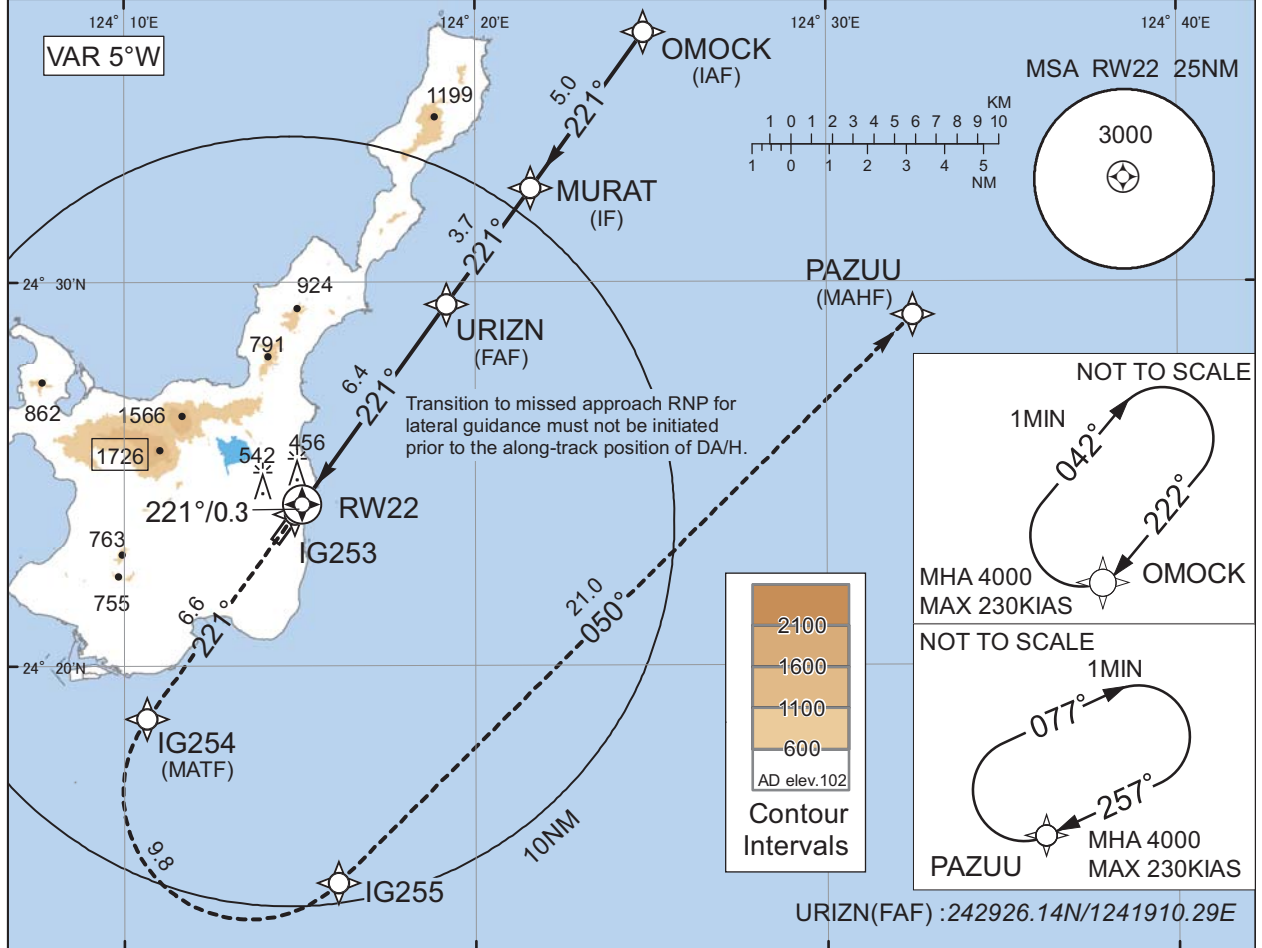
INSTRUMENT APPROACH CHART

ROIG / NEW ISHIGAKI

RNP Y RWY22(AR)

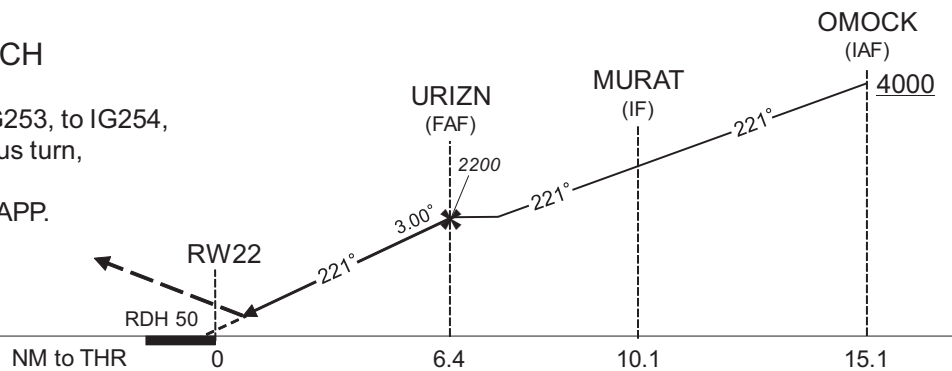
SAKISHIMA APP 120.3 - 121.2	RNP AR RF required.	ISHIGAKI TOWER 118.0 - 126.2	RADAR AVBL ATIS 128.675
--------------------------------	------------------------	---------------------------------	----------------------------

For uncompensated Baro-VNAV systems, procedure not authorized below 5°C / above 45°C



MISSED APPROACH

Climb to 4000FT, to IG253, to IG254, to IG255 via fixed radius turn, to PAZUU and hold. Contact SAKISHIMA APP.



Missed APCH climb gradient MNM 5.0%

MINIMA	THR elev.110	AD elev.102		
CAT	RNP 0.12		RNP 0.30	
	DA(H)	CMV	DA(H)	CMV
A	-	-	-	-
B	-	-	-	-
C	545(435)	1400	608(498)	1600
D	559(449)	1600	618(508)	1800

MINIMA with Missed APCH climb gradient of 2.5% are not established.

**Authorization Required**

CHANGE : Description of VAR.

INSTRUMENT APPROACH CHART

ROIG / NEW ISHIGAKI

RNP Y RWY22(AR)

Coding Table

Serial Number	Path Descriptor	Waypoint Identifier	Fly Over	Course °M(°T)	Magnetic Variation	Distance (NM)	Turn Direction	Altitude (FT)	Speed (KIAS)	VPA/ RDH (°/FT)	RNP Value
001	IF	OMOCK	-	-	-5.0	-	-	+4000	-	-	-
002	TF	MURAT	-	221 (215.8)	-5.0	5.0	-	-	-	-	1.0
003	TF	URIZN	-	221 (215.8)	-5.0	3.7	-	2200	-	-	1.0
004	TF	RW22	Y	221 (215.8)	-5.0	6.4	-	160	-	-3.00/50	0.12 0.30
005	TF	IG253	-	221 (215.7)	-5.0	0.3	-	-	-	-	0.12 0.30
006	TF	IG254	-	221 (215.7)	-5.0	6.6	-	-	-	-	1.0
007	RF Center: IGRF3 r=3.28NM	IG255	-	-	-5.0	9.8	L	-	-	-	1.0
008	TF	PAZUU	-	050 (045.2)	-5.0	21.0	-	4000	-	-	1.0

Path	Waypoint Identifier	Inbound Course °M(°T)	Magnetic Variation	Outbound Time (MIN)	Turn Direction	Minimum Altitude (FT)	Maximum Altitude (FT)	Speed (KIAS)	RNP Value
Hold	OMOCK	222 (216.9)	-5.0	1.0 (-14000)	R	4000	FL140	-230 (-14000)	1.0
Hold	PAZUU	257 (252.1)	-5.0	1.0 (-14000)	R	4000	FL140	-230 (-14000)	1.0

Waypoint Coordinates

Waypoint Identifier	Coordinates	RF Arc Center Identifier	Coordinates
OMOCK	243631.66N/1242447.35E	IGRF3	241641.99N/1241333.15E
MURAT	243227.94N/1242134.19E		
URIZN	242926.14N/1241910.29E		
RW22	242413.59N/1241503.24E		
IG253	242357.98N/1241450.93E		
IG254	241837.84N/1241038.29E		
IG255	241421.38N/1241604.82E		
PAZUU	242908.99N/1243226.97E		



ROIG / NEW ISHIGAKI

Visual REP



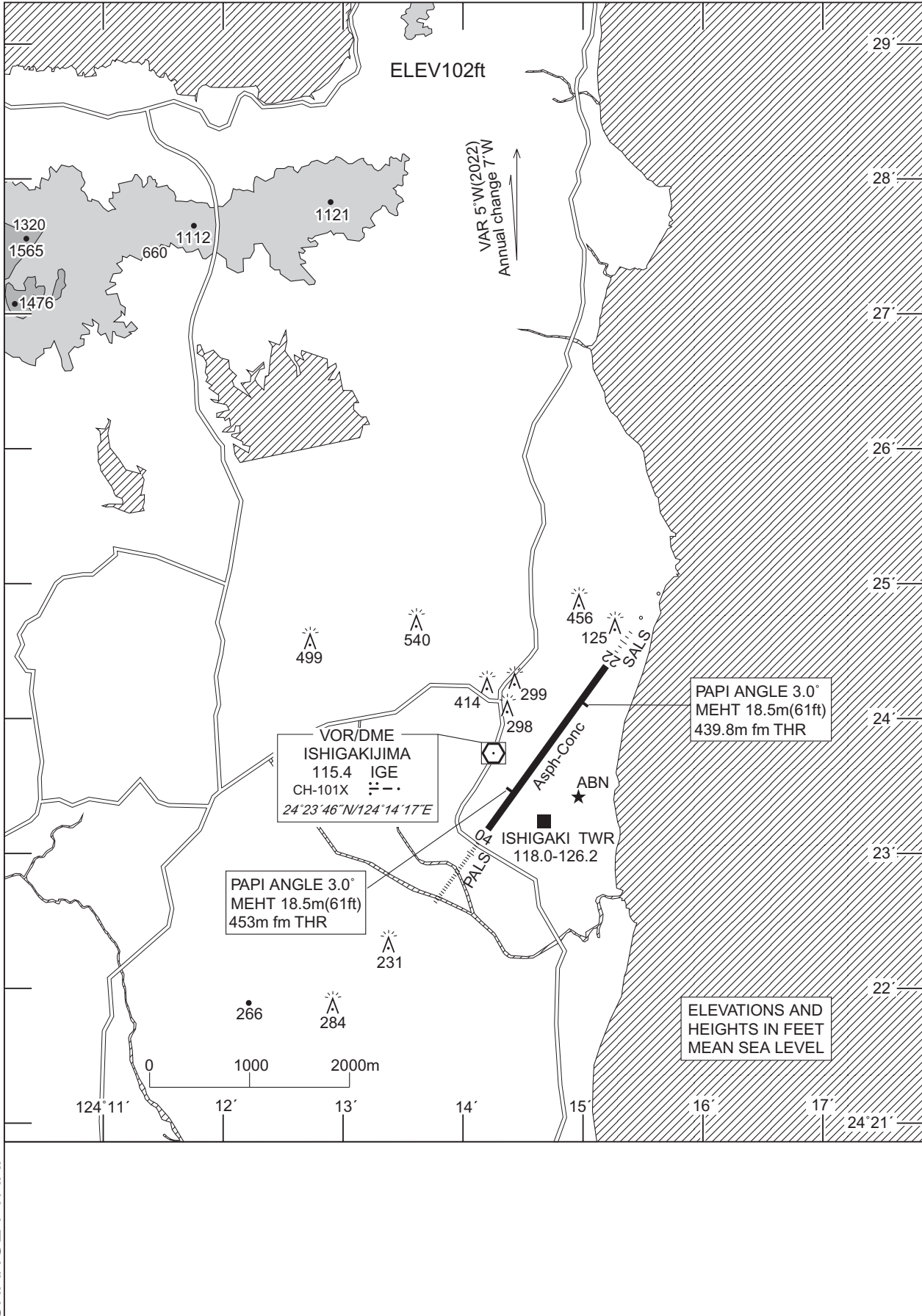
※図中に標高を示す数字がある場合、単位はメートル(m)である。The unit of measurement used to express elevation is meter(m).

CHANGE : Map updated. BRG/DIST from ARP.

Call sign	BRG / DIST from ARP	Remarks
野底岳 Nosokodake	002°T / 5.5NM	山 Mountain
イーストポイント East Point	120°T / 6.0NM	海上 Over the sea
竹富島 Taketomijima	246°T / 9.0NM	高速艇船着場 Port
観音崎 Kannonzaki	256°T / 7.5NM	灯台 Light house
川平 Kabira	304°T / 6.8NM	川平湾グラスポート乗り場 Kabira Bay Boat pier
底原 Sokobaru	322°T / 2.1NM	ダム Dam

ROIG / NEW ISHIGAKI

LDG CHART



CHANGE : VAR.

