



**INTENTIONALLY LEFT BLANK**

STANDARD DEPARTURE CHART -INSTRUMENT

ROKJ / KUMEJIMA

SID

SOUTH FIVE DEPARTURE

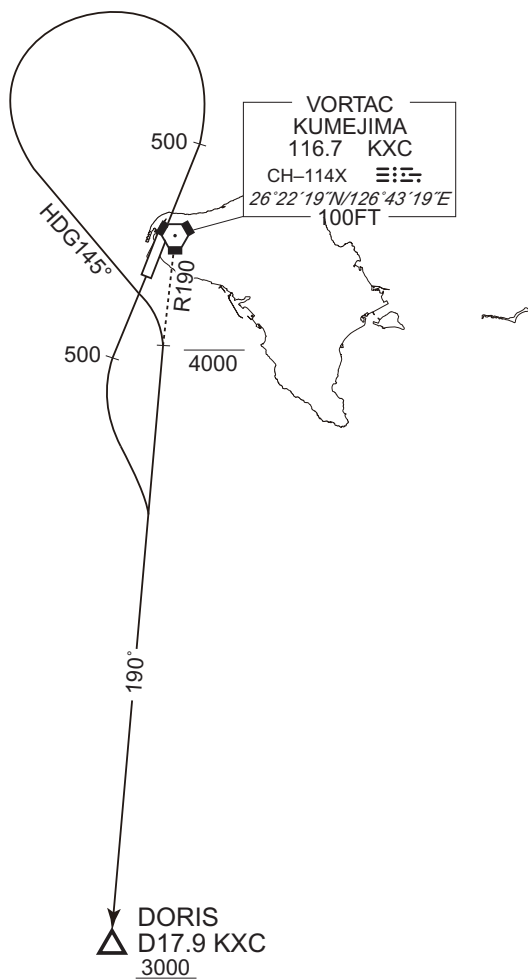
RWY03 : Climb RWY HDG to 500FT, turn left HDG145° to intercept and proceed via KXC R190 to DORIS.

Maintain 4000FT or below until intercepting KXC R190, cross DORIS at or above 3000FT.

RWY21 : Climb RWY HDG to 500FT, turn left to intercept and proceed via KXC R190 to DORIS.

Cross DORIS at or above 3000FT.

Note RWY03 : 5.0% climb gradient required up to 500FT.



CHANGE : PROC renamed. PROC course.

STANDARD DEPARTURE CHART -INSTRUMENT

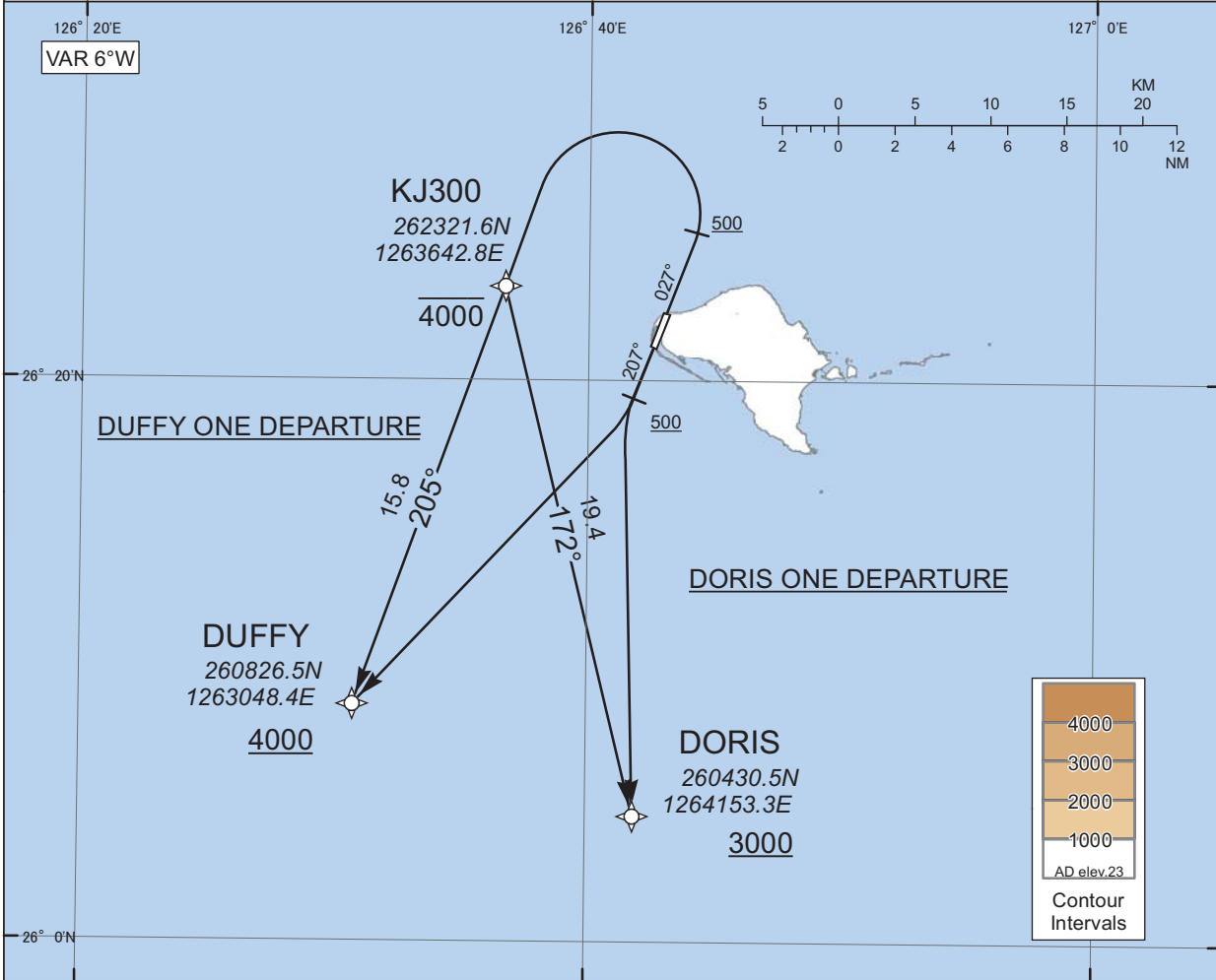
ROKJ / KUMEJIMA

RNAV SID

DORIS ONE DEPARTURE / DUFFY ONE DEPARTURE

RNP1

Note GNSS required.



CHANGE : Navigation Specification(Basic RNP1 → RNP1).

DORIS ONE DEPARTURE

RWY03 : Climb on HDG027° at or above 500FT, turn left direct to KJ300 at or below 4000FT, to DORIS at or above 3000FT.

RWY21 : Climb on HDG207° at or above 500FT, turn left direct to DORIS at or above 3000FT.

Note RWY03 : 5.0% climb gradient required up to 500FT.

DUFFY ONE DEPARTURE

RWY03 : Climb on HDG027° at or above 500FT, turn left direct to KJ300 at or below 4000FT, to DUFFY at or above 4000FT.

RWY21 : Climb on HDG207° at or above 500FT, turn right direct to DUFFY at or above 4000FT.

Note RWY03 : 5.0% climb gradient required up to 500FT.

STANDARD DEPARTURE CHART -INSTRUMENT

ROKJ / KUMEJIMA

RNAV SID

DORIS ONE DEPARTURE

RWY03

Serial Number	Path Descriptor	Waypoint Identifier	Fly Over	Course °M(°T)	Magnetic Variation	Distance (NM)	Turn Direction	Altitude (FT)	Speed (KIAS)	Vertical Angle	Navigation Specification
001	VA	-	-	027 (021.1)	-5.7	-	-	+500	-	-	RNP1
002	DF	KJ300	-	-	-5.7	-	L	-4000	-	-	RNP1
003	TF	DORIS	-	172 (166.1)	-5.7	19.4	-	+3000	-	-	RNP1

RWY21

Serial Number	Path Descriptor	Waypoint Identifier	Fly Over	Course °M(°T)	Magnetic Variation	Distance (NM)	Turn Direction	Altitude (FT)	Speed (KIAS)	Vertical Angle	Navigation Specification
001	VA	-	-	207 (201.1)	-5.7	-	-	+500	-	-	RNP1
002	DF	DORIS	-	-	-5.7	-	L	+3000	-	-	RNP1

DUFFY ONE DEPARTURE

RWY03

Serial Number	Path Descriptor	Waypoint Identifier	Fly Over	Course °M(°T)	Magnetic Variation	Distance (NM)	Turn Direction	Altitude (FT)	Speed (KIAS)	Vertical Angle	Navigation Specification
001	VA	-	-	027 (021.1)	-5.7	-	-	+500	-	-	RNP1
002	DF	KJ300	-	-	-5.7	-	L	-4000	-	-	RNP1
003	TF	DUFFY	-	205 (199.6)	-5.7	15.8	-	+4000	-	-	RNP1

RWY21

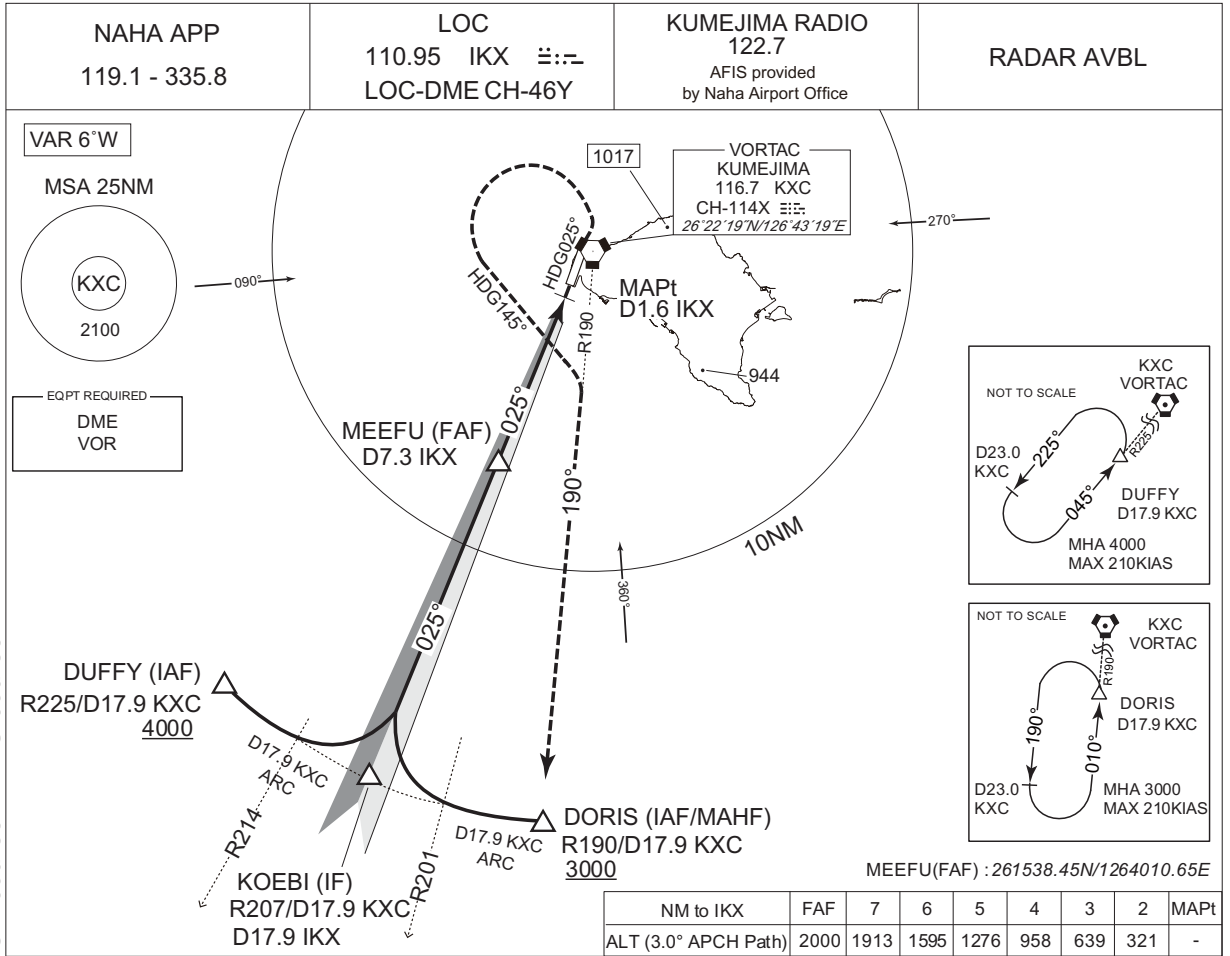
Serial Number	Path Descriptor	Waypoint Identifier	Fly Over	Course °M(°T)	Magnetic Variation	Distance (NM)	Turn Direction	Altitude (FT)	Speed (KIAS)	Vertical Angle	Navigation Specification
001	VA	-	-	207 (201.1)	-5.7	-	-	+500	-	-	RNP1
002	DF	DUFFY	-	-	-5.7	-	R	+4000	-	-	RNP1

CHANGE : Navigation Specification(Basic RNP1 → RNP1).

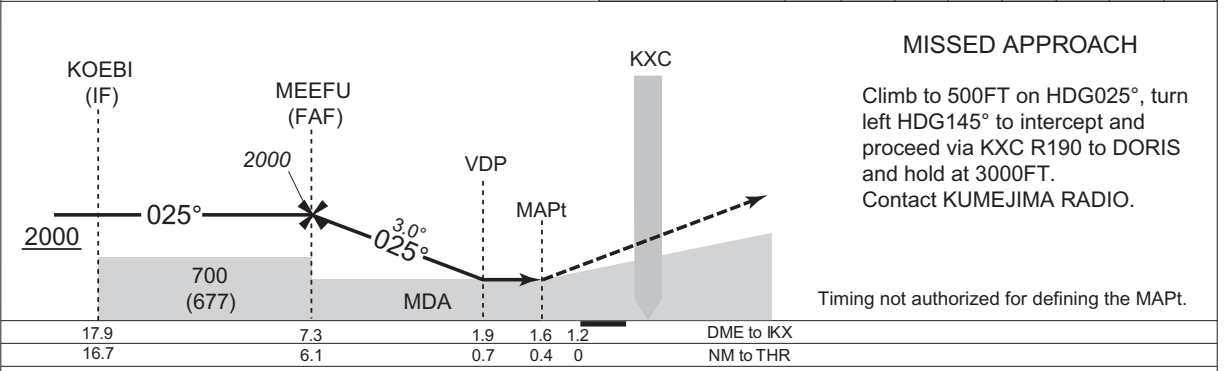
INSTRUMENT APPROACH CHART

ROKJ / KUMEJIMA

LOC RWY 03



CHANGE : BRG FM KXC for DUFFY, KOEBI, DORIS. Missed APCH course. HLDG course.



Missed APCH climb gradient MNM 5.0%

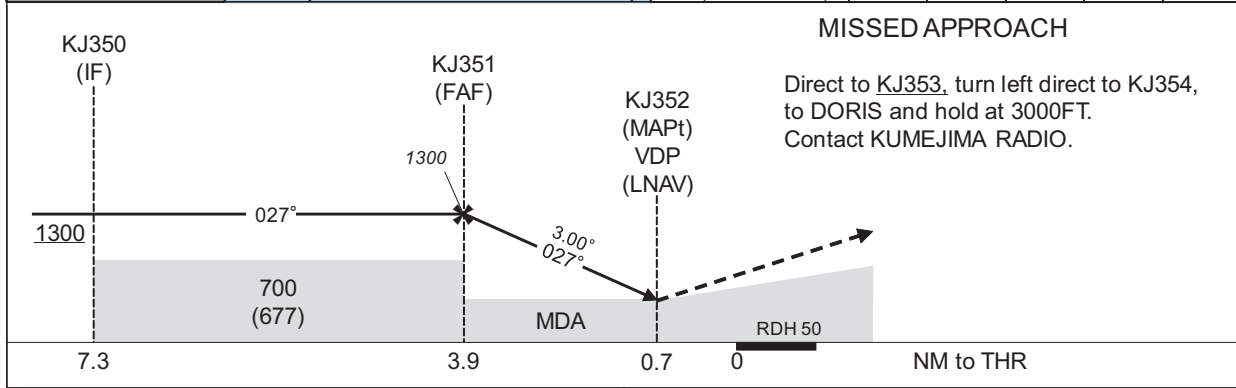
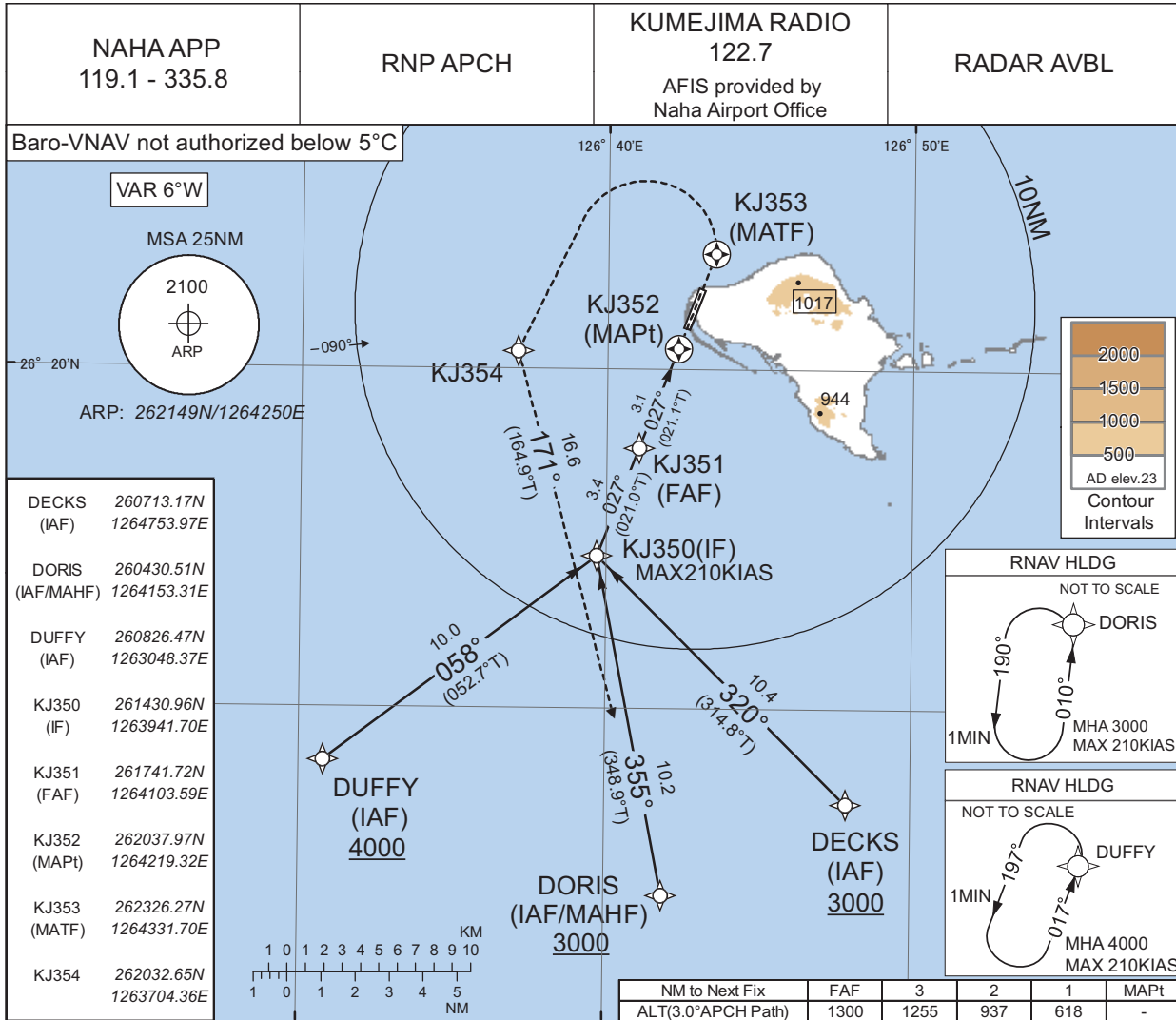
MINIMA		THR elev. 22	AD elev. 23	
CAT	CIRCLING			
	MDA(H)	CMV	MDA(H)	VIS
	280 (257)	1500	380 (357)	1600
		1600	480 (457)	
D	1800	580 (557)	3200	

MINIMA with Missed APCH climb gradient of 2.5% are not established.  
Circling to WEST side of RWY only.

INSTRUMENT APPROACH CHART

ROKJ / KUMEJIMA

RNP RWY03



Missed APCH climb gradient MNM 5.0%

MINIMA	THR elev. 22	AD elev. 23				
CAT	LNAV/VNAV		LNAV		CIRCLING	
	DA(H)	CMV	MDA(H)	CMV	MDA(H)	VIS
A	300(278)	1500	300(277)	1500	380(357)	1600
B		1600		1600	480(457)	
C		1800		1800	580(557)	2400
D	301(279)	1800				3200

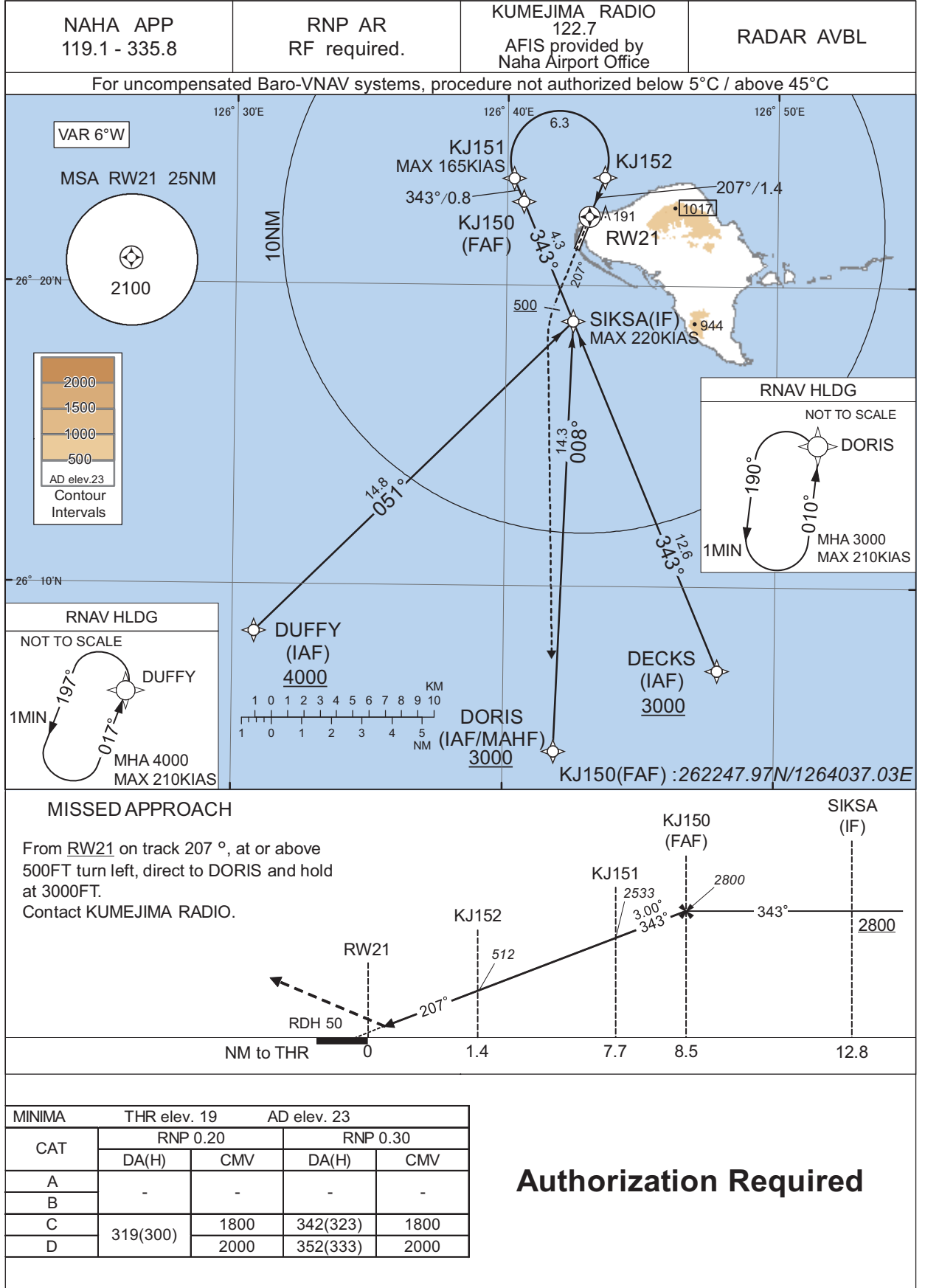
MINIMA with Missed APCH climb gradient of 2.5% are not established.  
Circling to WEST side of RWY only.

CHANGE : Description of VAR.

INSTRUMENT APPROACH CHART

ROKJ / KUMEJIMA

RNP RWY21(AR)



CHANGE : Description of VAR.



INSTRUMENT APPROACH CHART

ROKJ / KUMEJIMA

RNP RWY21(AR)

Coding Table

Serial Number	Path Descriptor	Waypoint Identifier	Fly Over	Course °M(°T)	Magnetic Variation	Distance (NM)	Turn Direction	Altitude (FT)	Speed (KIAS)	VPA/RDH (°/FT)	RNP Value
001	IF	DECKS	-	-	-5.7	-	-	+3000	-	-	-
002	TF	SIKSA	-	343 (337.3)	-5.7	12.6	-	+2800	-220	-	0.3
001	IF	DORIS	-	-	-5.7	-	-	+3000	-	-	-
002	TF	SIKSA	-	008 (002.1)	-5.7	14.3	-	+2800	-220	-	1.0
001	IF	DUFFY	-	-	-5.7	-	-	+4000	-	-	-
002	TF	SIKSA	-	051 (045.2)	-5.7	14.8	-	+2800	-220	-	1.0
001	IF	SIKSA	-	-	-5.7	-	-	+2800	-220	-	-
002	TF	KJ150	-	343 (337.2)	-5.7	4.3	-	2800	-	-	0.3
003	TF	KJ151	-	343 (337.2)	-5.7	0.8	-	2533	-165	-3.00	0.20 0.30
004	RF Center: KJRF1 r=1.62NM	KJ152	-	-	-5.7	6.3	R	512	-	-3.00	0.20 0.30
005	TF	RW21	Y	207 (201.1)	-5.7	1.4	-	69	-	-3.00/50	0.20 0.30
006	FA	-	-	207 (201.1)	-5.7	-	-	+500	-	-	1.0
007	DF	DORIS	-	-	-5.7	-	L	3000	-	-	1.0

Path	Waypoint Identifier	Inbound Course °M(°T)	Magnetic Variation	Outbound Time (MIN)	Turn Direction	Minimum Altitude (FT)	Maximum Altitude (FT)	Speed (KIAS)	RNP Value
Hold	DORIS	010 (004.1)	-5.7	1.0 (-14000)	L	3000	FL140	-210 (-14000)	1.0
Hold	DUFFY	017 (010.9)	-5.7	1.0 (-14000)	L	4000	FL140	-210 (-14000)	1.0

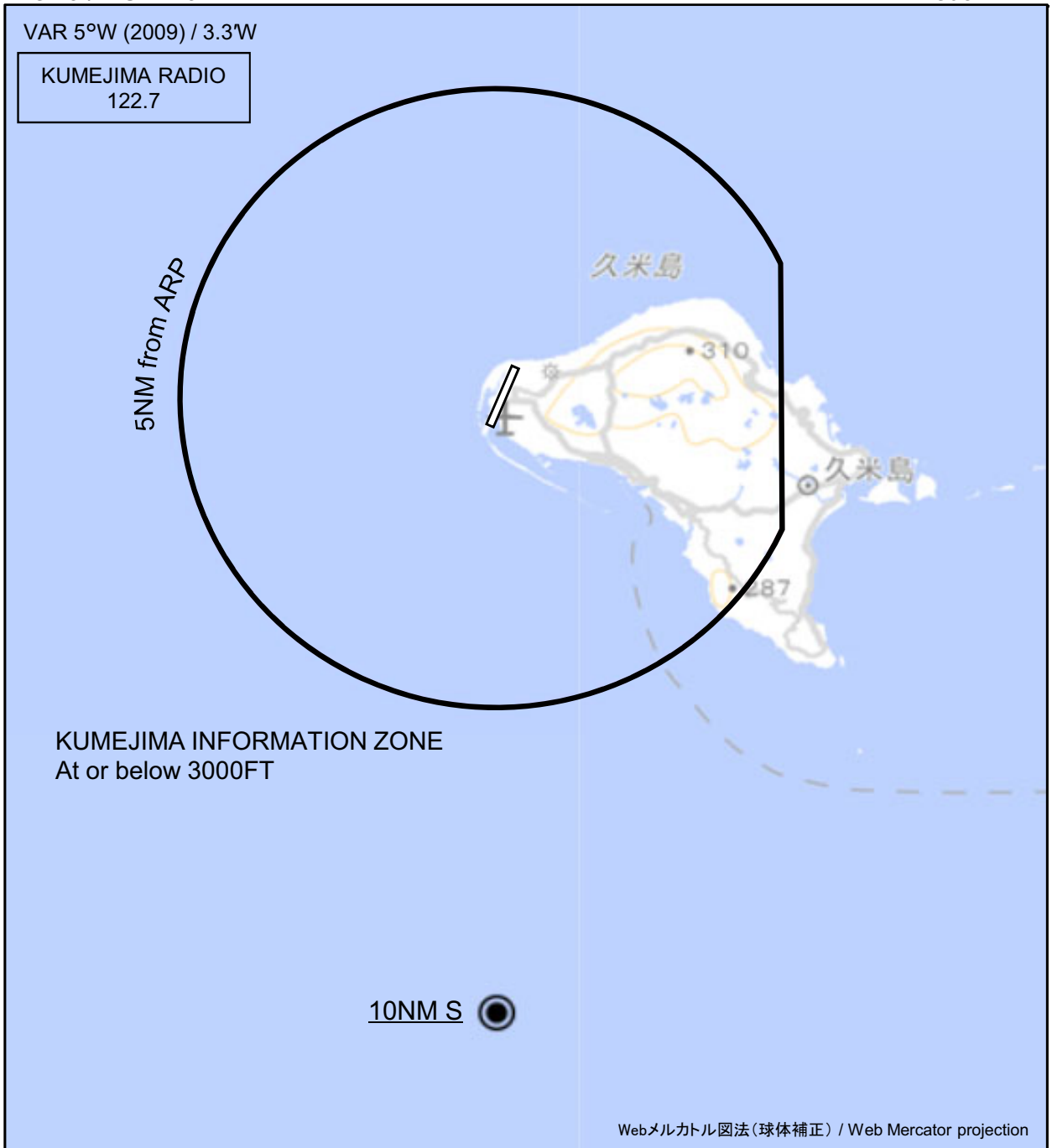
Waypoint Coordinates

Waypoint Identifier	Coordinates	RF Arc Center Identifier	Coordinates
DECKS	260713.17N / 1264753.97E	KJRF1	262412.35N / 1264155.20E
DORIS	260430.51N / 1264153.31E		
DUFFY	260826.47N / 1263048.37E		
SIKSA	261849.62N / 1264228.65E		
KJ150	262247.97N / 1264037.03E		
KJ151	262334.37N / 1264015.28E		
KJ152	262337.07N / 1264336.35E		
RW21	262218.92N / 1264302.73E		

CHANGE : New PROC.

ROKJ / KUME JIMA

Visual REP



CHANGE : Map updated. BRG/DIST from ARP.

※図中に標高を示す数字がある場合、単位はメートル(m)である。The unit of measurement used to express elevation is meter(m).

Call sign	BRG / DIST from ARP	Remarks
10NM S	180°T / 10.0NM	海上 Over the sea

ROKJ / KUMEJIMA

Minimum Vectoring Altitude CHART

