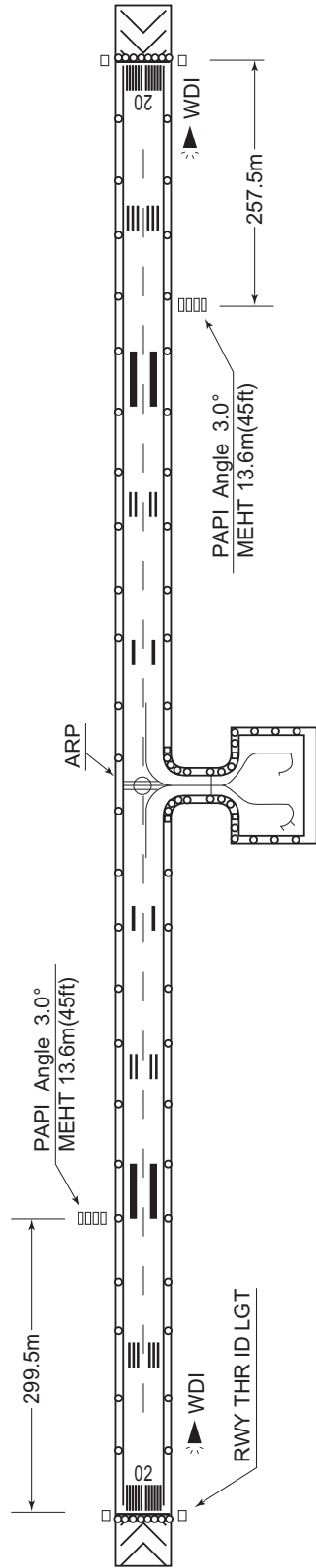


ROMD / MINAMIDAITO

AD CHART

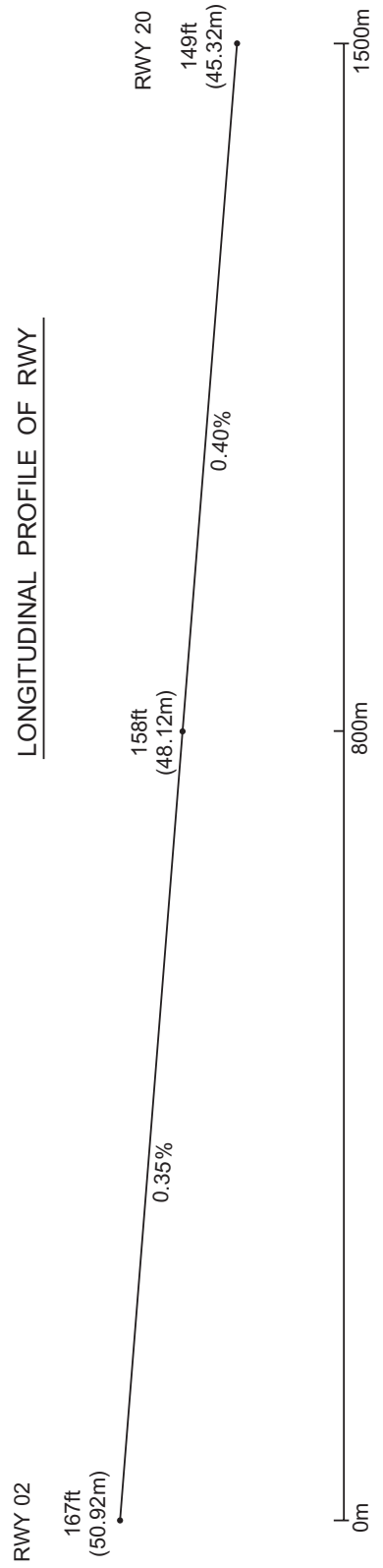
CHANGE : PAPI DIST FM THR for RWY 20 side.

MINAMIDAITO AP



★ ABN

REMARKS : WIDTH OF RWY	1500m x 45m
WIDTH OF TWY	18m x 77.5m
RWY GROOVING	1500m x 30m
STRENGTH OF RWY	PCN 19/F/B/Y/I/T
STRENGTH OF TWY	PCN 19/F/B/Y/I/T
STRENGTH OF APRON	PCN 19/F/B/Y/I/T



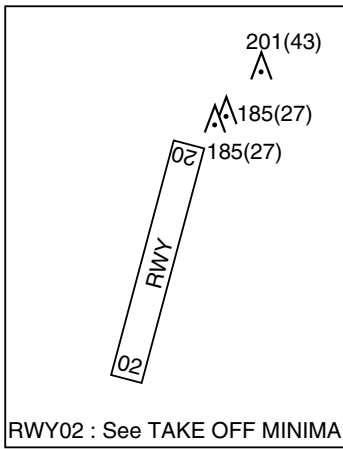
STANDARD DEPARTURE CHART -INSTRUMENT

ROMD / MINAMIDAITO

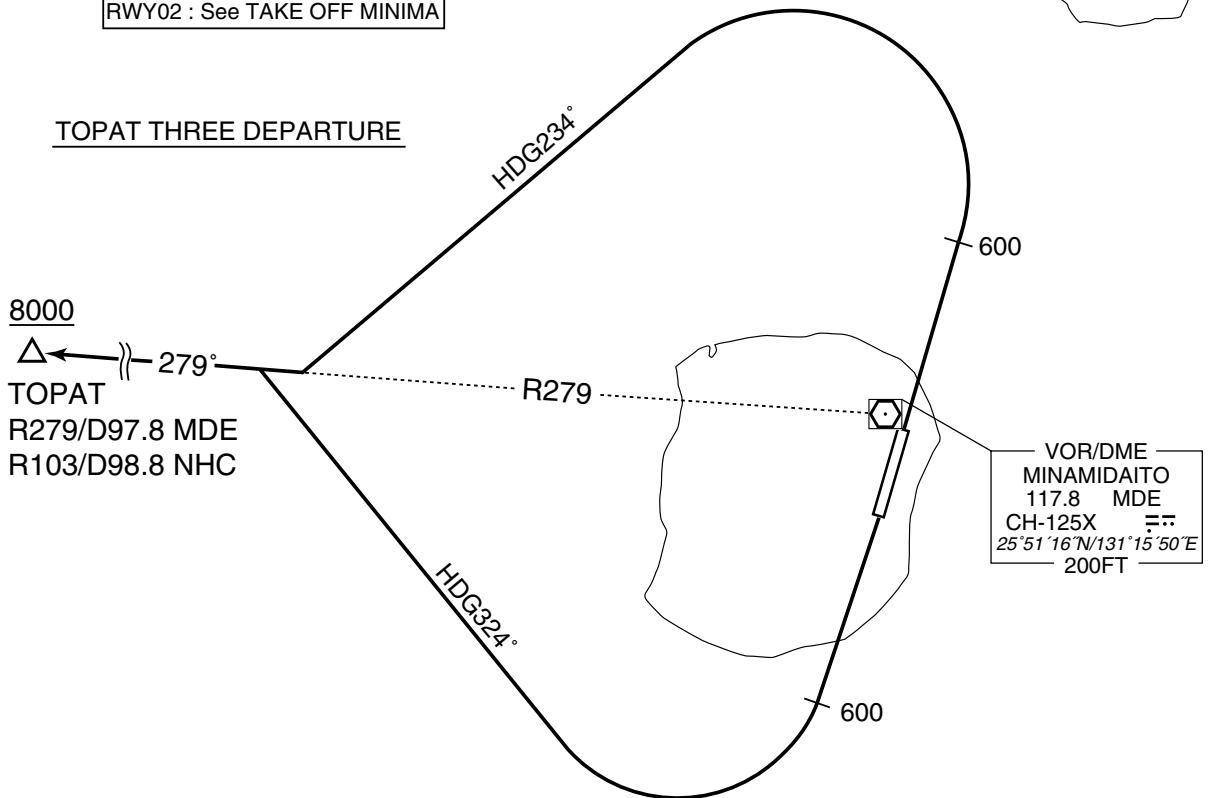
SID

TOPAT THREE DEPARTURE

RWY02 : Climb RWY HDG to 600FT, turn left HDG234°...  
 RWY20 : Climb RWY HDG to 600FT, turn right HDG324°...  
 ... to intercept and proceed via MDE R279 to TOPAT.  
 Cross TOPAT at or above 8000FT.



TOPAT THREE DEPARTURE



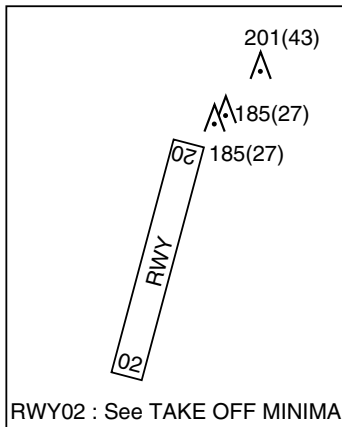
STANDARD DEPARTURE CHART -INSTRUMENT

ROMD / MINAMIDAITO

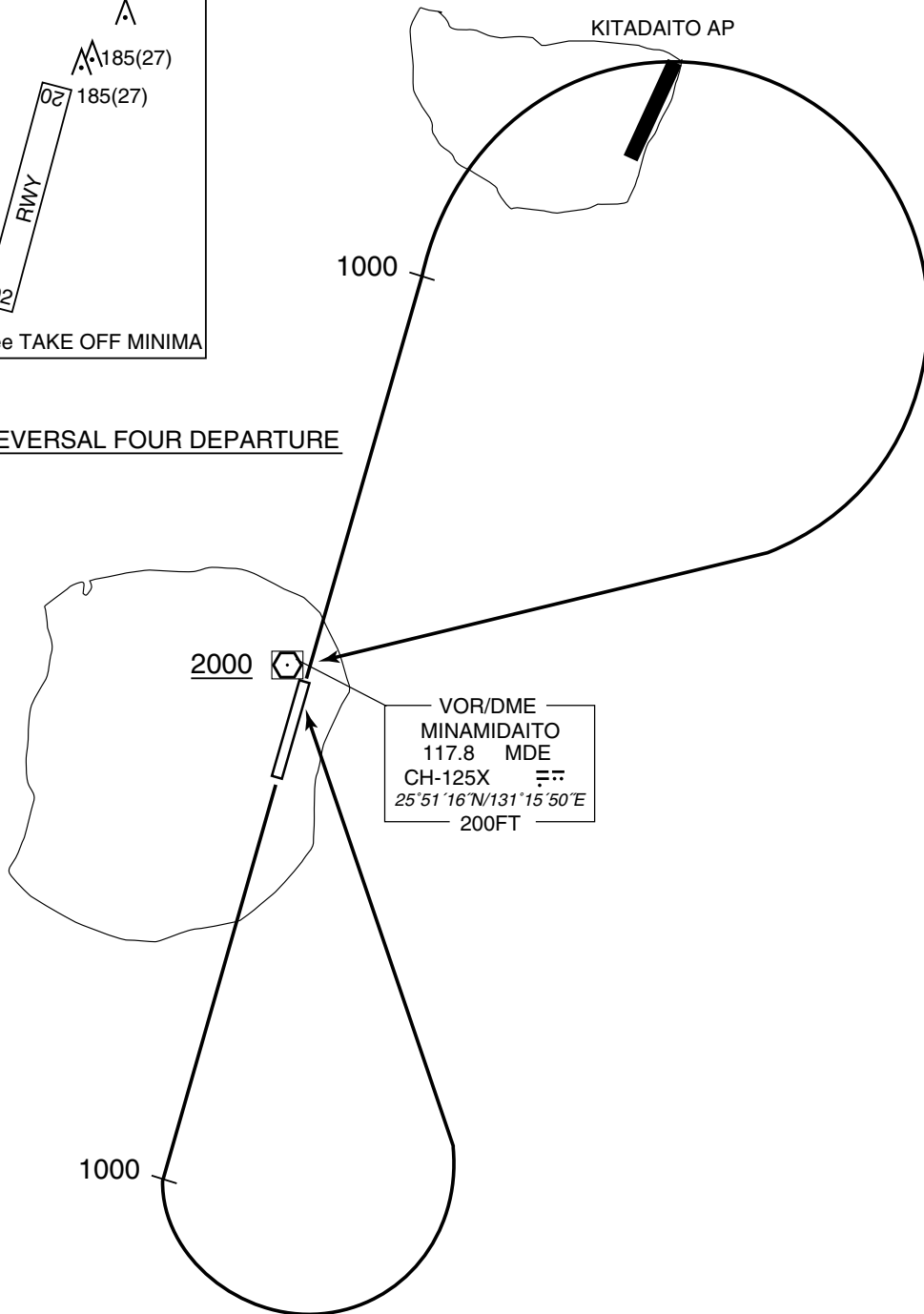
SID

MINAMIDAITO REVERSAL FOUR DEPARTURE

RWY 02 : Climb RWY HDG to 1000FT, turn right...  
RWY 20 : Climb RWY HDG to 1000FT, turn left...  
... direct to MDE VOR/DME.  
Cross MDE VOR/DME at or above 2000FT.



MINAMIDAITO REVERSAL FOUR DEPARTURE



STANDARD DEPARTURE CHART - INSTRUMENT

ROMD / MINAMIDAITO

RNAV SID

CORCO SOUTH ONE DEPARTURE

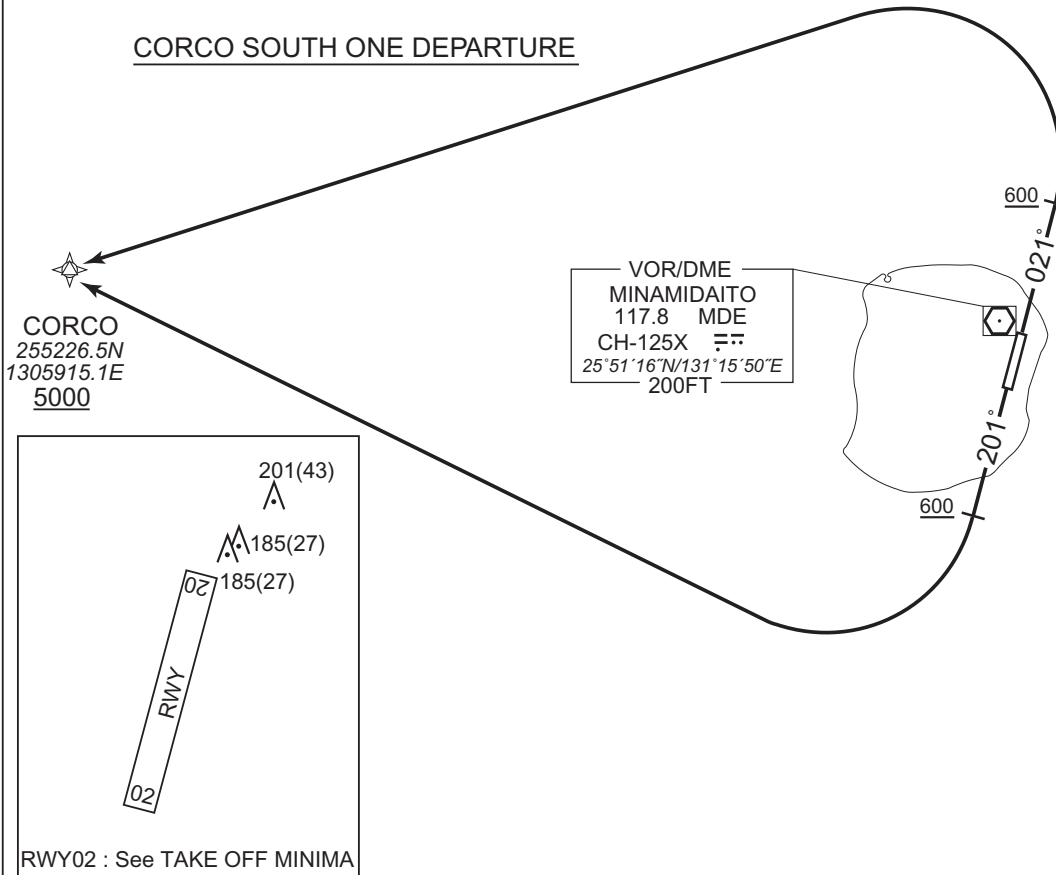
RNP1

Note GNSS required.

VAR 5°W (2015)



CORCO SOUTH ONE DEPARTURE



CORCO SOUTH ONE DEPARTURE

RWY02 : Climb on HDG021° at or above 600FT, turn left direct to CORCO at or above 5000FT.  
RWY20 : Climb on HDG201° at or above 600FT, turn right direct to CORCO at or above 5000FT.

RWY02

Serial Number	Path Descriptor	Waypoint Identifier	Fly Over	Course °M(°T)	Magnetic Variation	Distance (NM)	Turn Direction	Altitude (FT)	Speed (KIAS)	Vertical Angle	Navigation Specification
001	VA	-	-	021 (015.6)	-4.9	-	-	+600	-	-	RNP1
002	DF	CORCO	-	-	-4.9	-	L	+5000	-	-	RNP1

RWY20

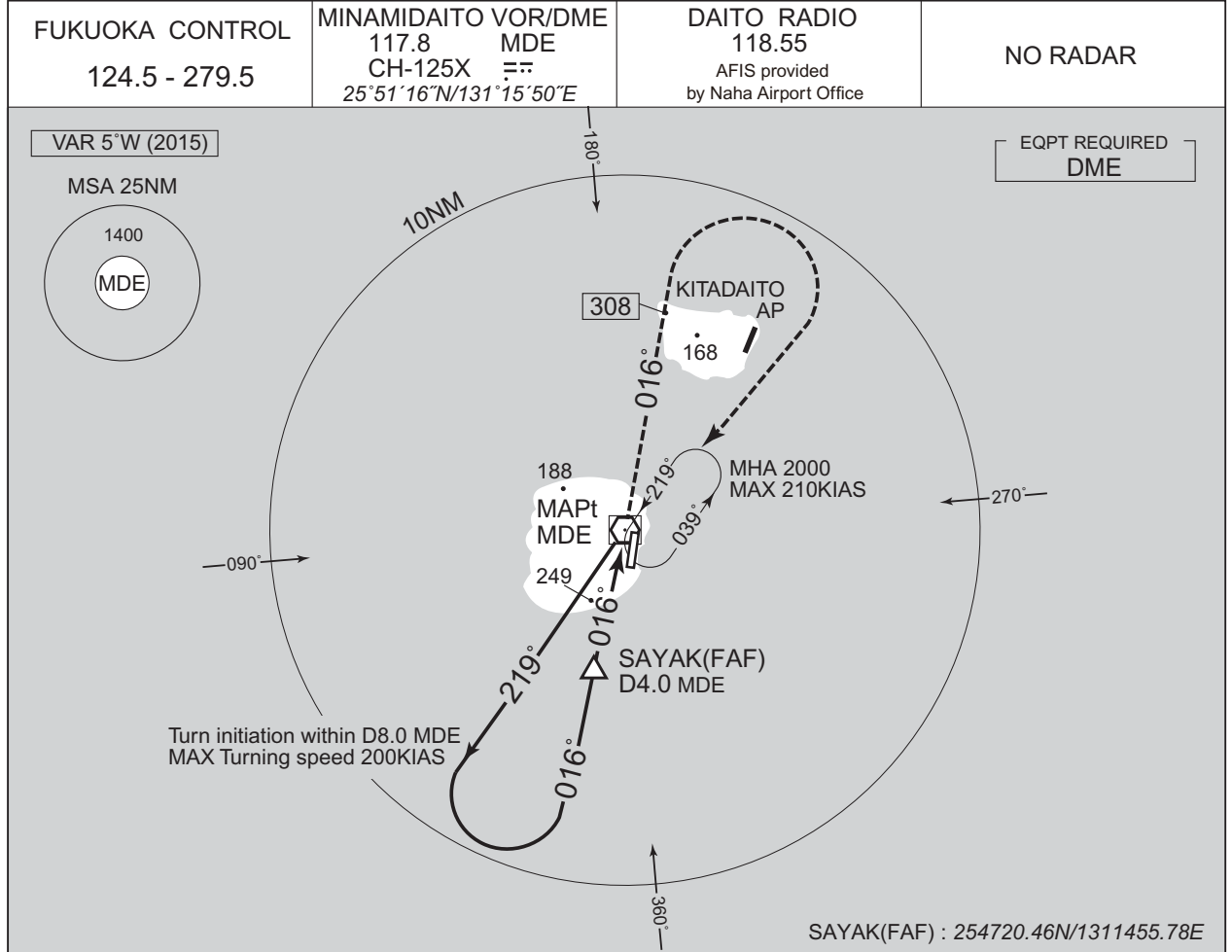
Serial Number	Path Descriptor	Waypoint Identifier	Fly Over	Course °M(°T)	Magnetic Variation	Distance (NM)	Turn Direction	Altitude (FT)	Speed (KIAS)	Vertical Angle	Navigation Specification
001	VA	-	-	201 (195.6)	-4.9	-	-	+600	-	-	RNP1
002	DF	CORCO	-	-	-4.9	-	R	+5000	-	-	RNP1

CHANGE : Navigation Specification(Basic RNP1 → RNP1).

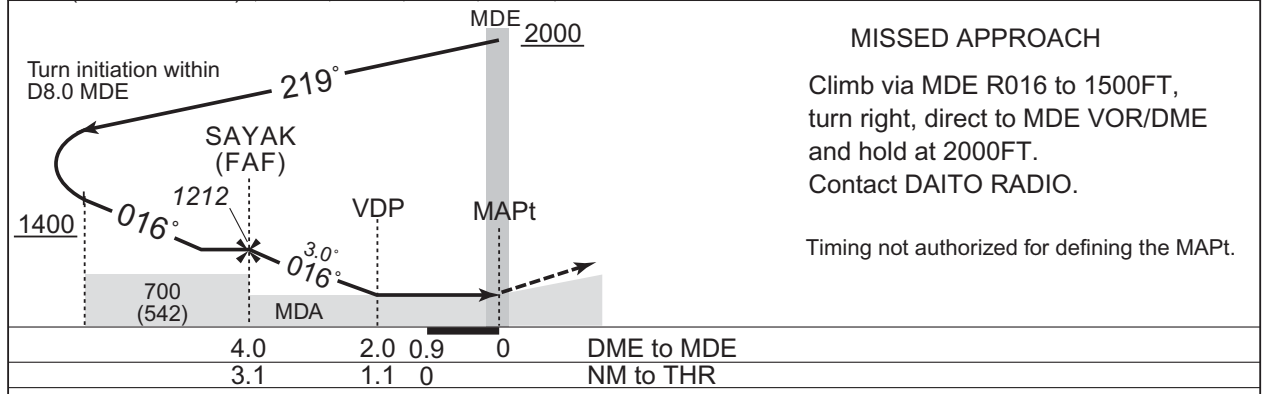
INSTRUMENT APPROACH CHART

ROMD / MINAMIDAITO

VOR RWY02



NM to MDE	FAF	3	2	MAPt
ALT (3.0° APCH Path)	1212	893	575	-



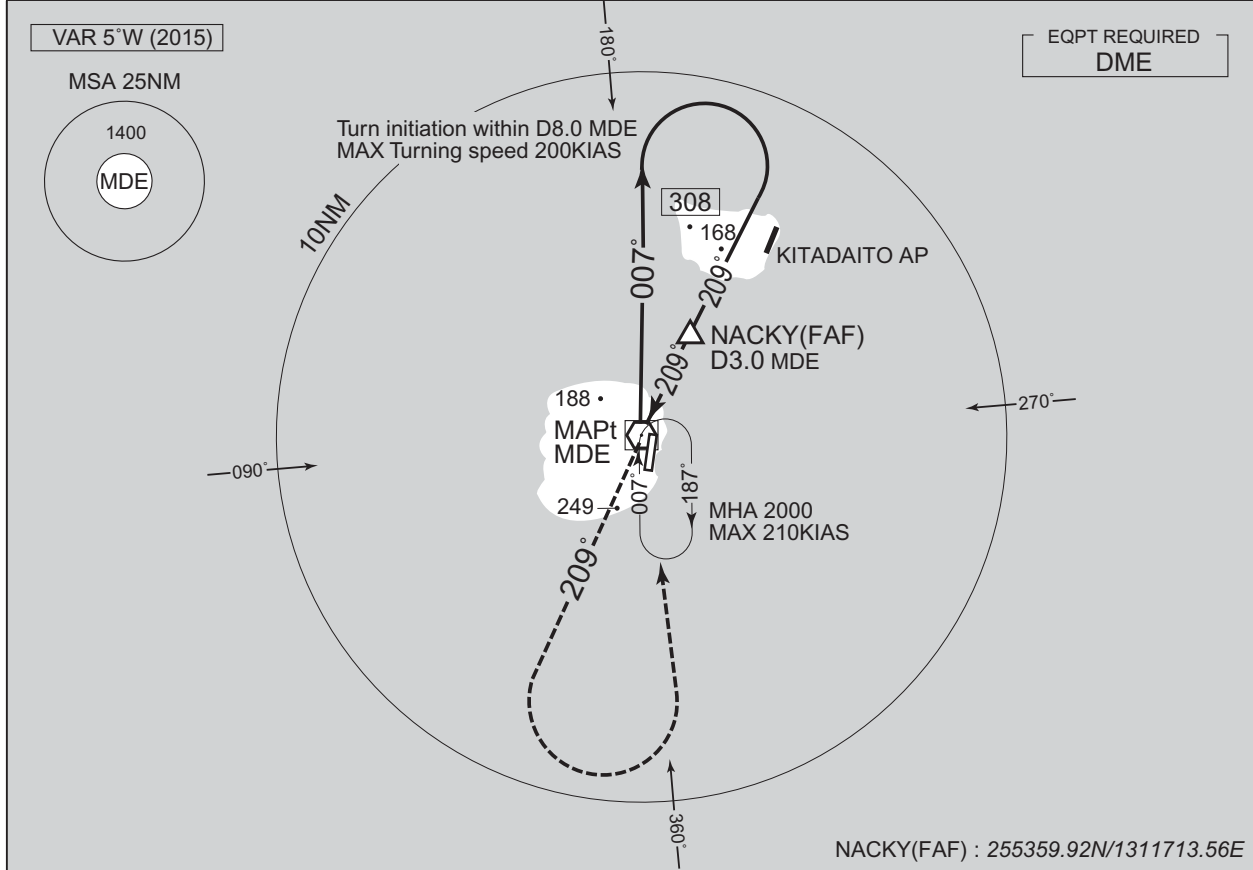
CHANGE : ATC call sign.	MINIMA		THR elev. 167	AD elev. 158
	CAT	CIRCLING		
		MDA(H)	CMV	MDA(H) VIS
	A	550 (392)	1500	600 (442) 1600
	B			610 (452)
C		1800	620 (462) 2400	
D	-	-	- -	

INSTRUMENT APPROACH CHART

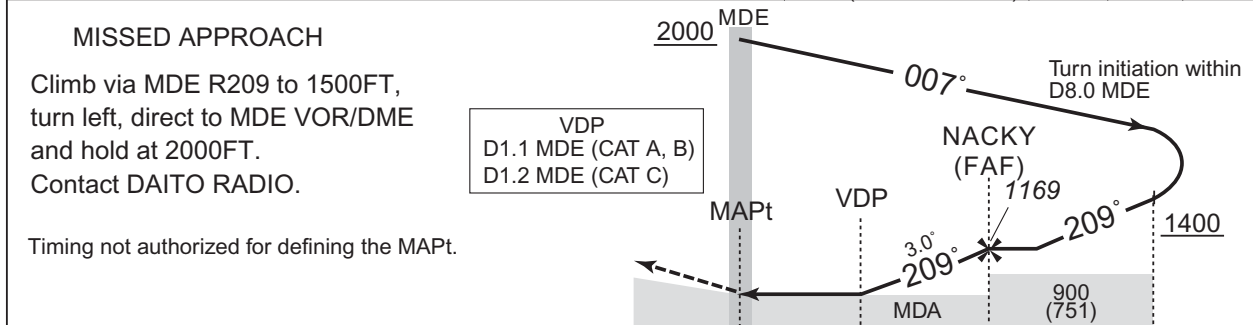
ROMD / MINAMIDAITO

VOR RWY20

FUKUOKA CONTROL 124.5 - 279.5	MINAMIDAITO VOR/DME 117.8 MDE CH-125X 25°51'16"N/131°15'50"E	DAITO RADIO 118.55 AFIS provided by Naha Airport Office	NO RADAR
----------------------------------	---	--	----------



NM to MDE	MAPt	2	FAF
ALT (3.0° APCH Path)	-	851	1169



DME to/from MDE	0.10	3.0
NM to THR	0.1	3.1

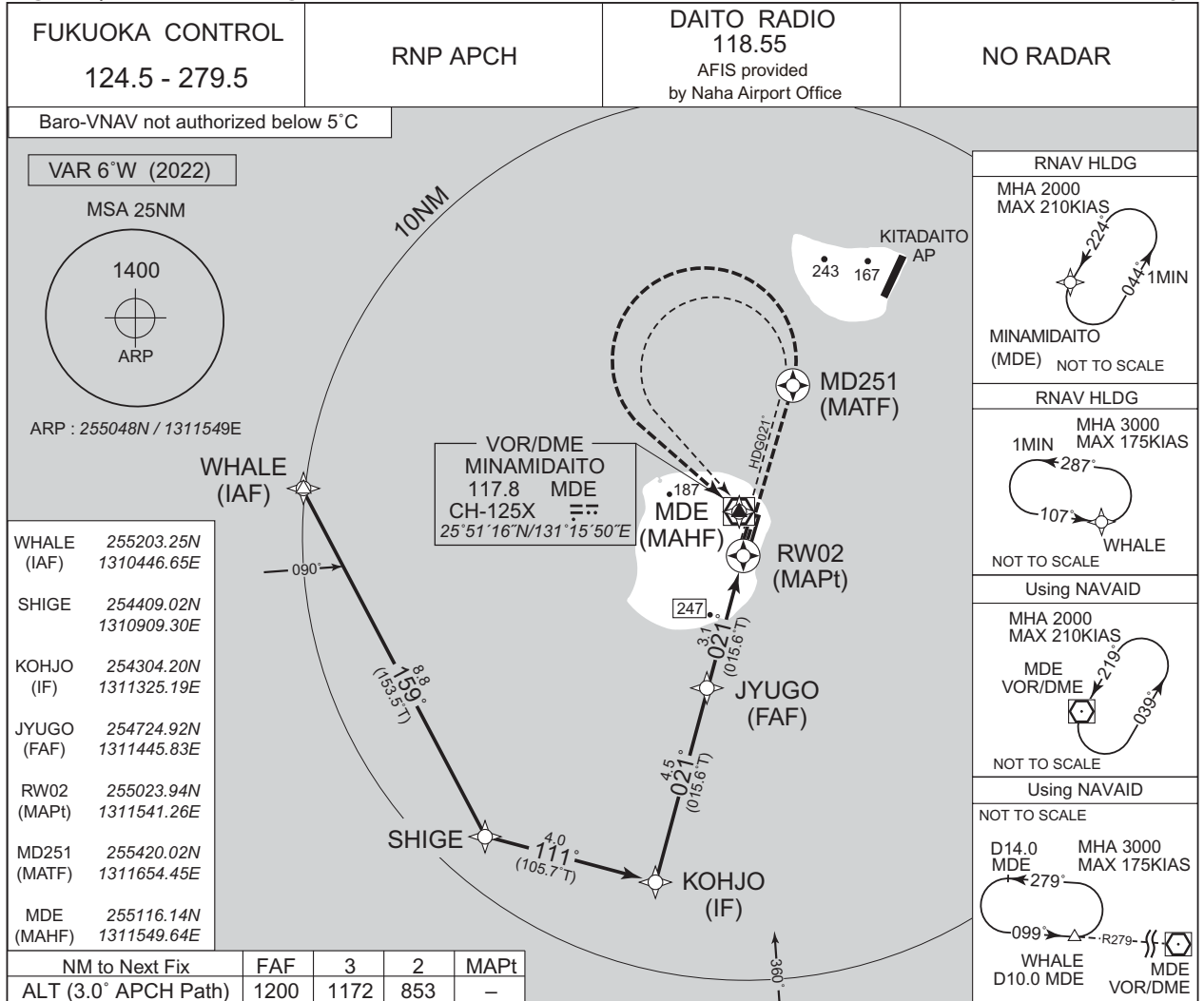
MINIMA		THR elev. 149	AD elev. 158	
CAT			CIRCLING	
	MDA(H)	CMV	MDA(H)	VIS
A	550 (401)	1500	600 (442)	1600
B			610 (452)	
C	560 (411)	1800	620 (462)	2400
D	-	-	-	-

CHANGE : ATC call sign.

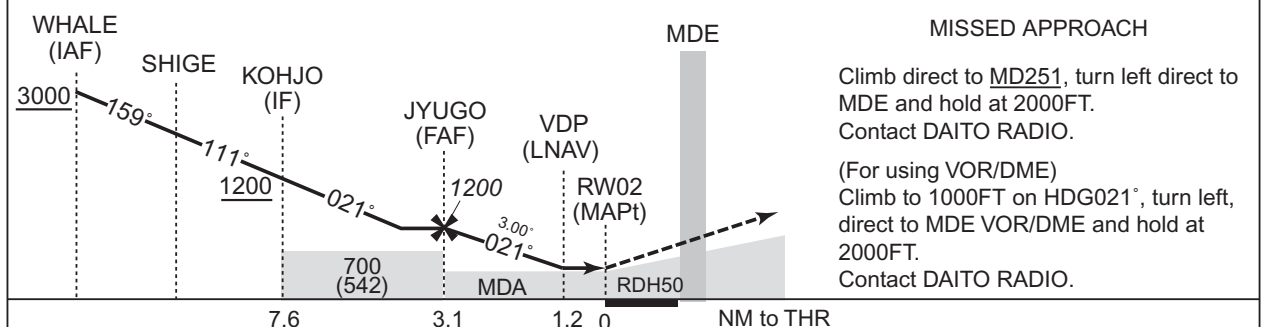
INSTRUMENT APPROACH CHART

ROMD / MINAMIDAITO

RNP RWY02



CHANGE:PROC renamed. Requirement for RNP.

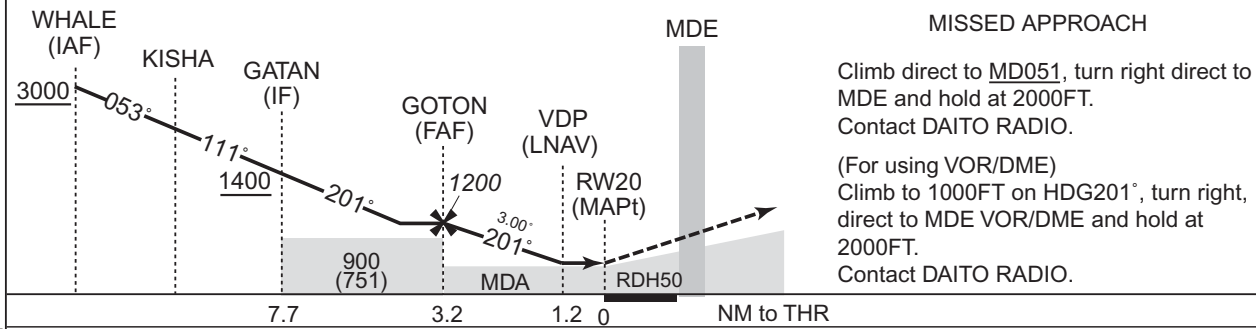
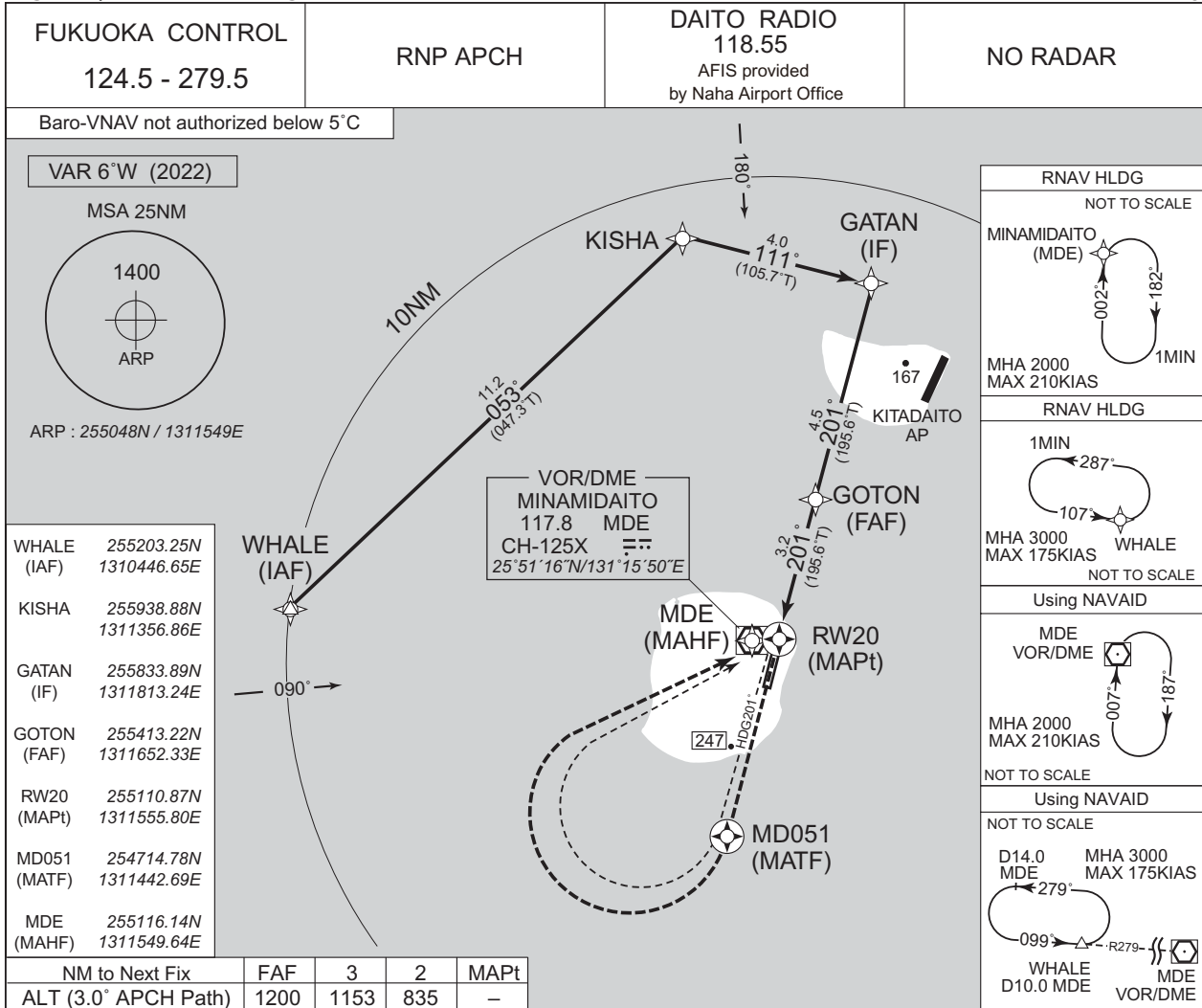


MINIMA		THR elev. 167		AD elev. 158		
CAT	LNAV/VNAV		LNAV		CIRCLING	
	DA(H)	CMV	MDA(H)	CMV	MDA (H)	VIS
A	550 (383)	1500	550 (392)	1500	600 (442)	1600
B					610 (452)	
C		1800		1800	620 (462)	2400
D	-	-	-	-	-	-

INSTRUMENT APPROACH CHART

ROMD / MINAMIDAITO

RNP RWY20



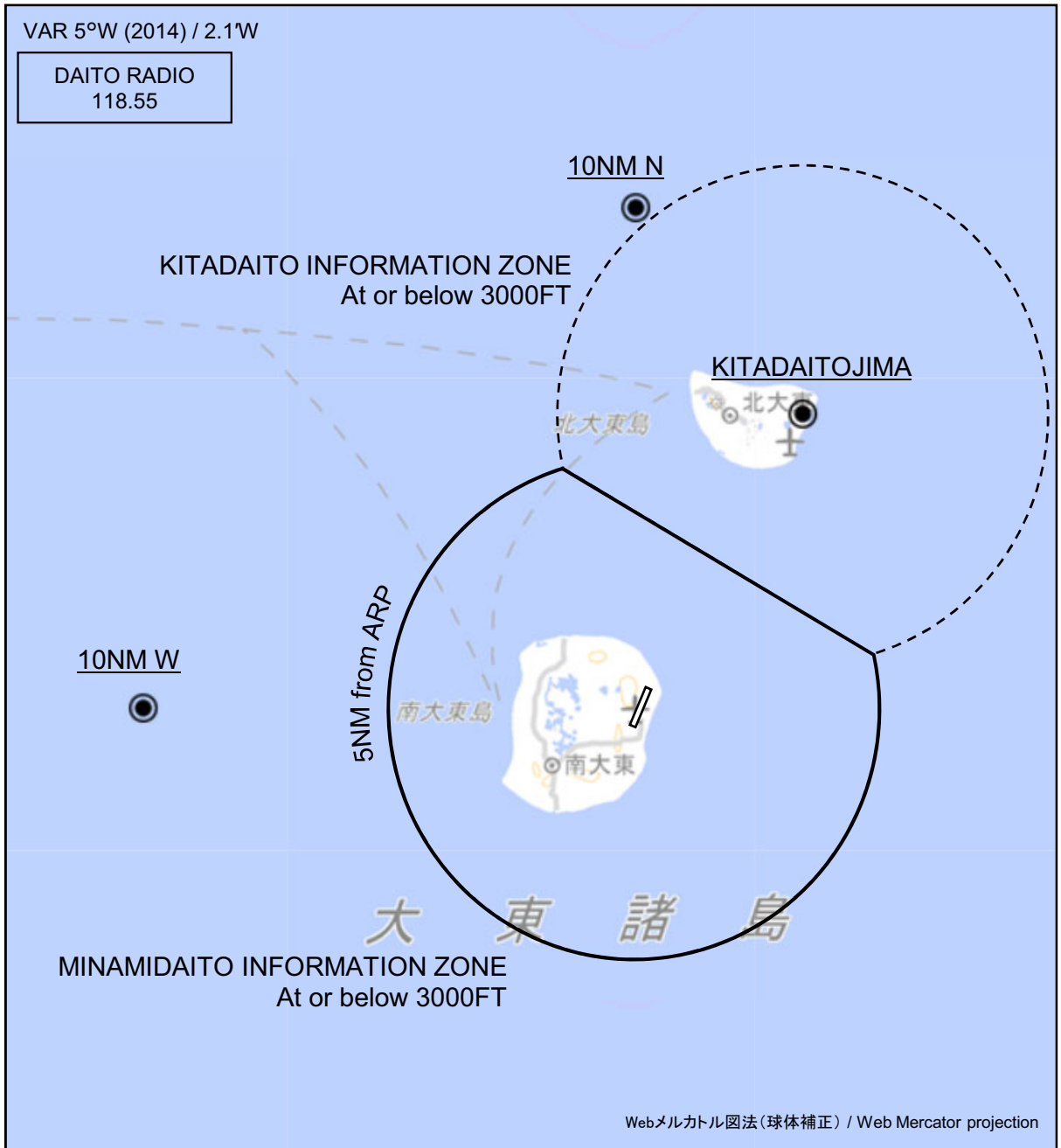
MINIMA		THR elev. 149		AD elev. 158		
CAT	LNAV/VNAV		LNAV		CIRCLING	
	DA(H)	CMV	MDA(H)	CMV	MDA(H)	VIS
A	550 (401)	1500	550 (401)	1500	600 (442)	1600
B					610 (452)	
C		1800		1800	620 (462)	2400
D	-	-	-	-	-	-

CHANGE:PROC renamed. Requirement for RNP.



ROMD / MINAMI DAITO

Visual REP



CHANGE: Map updated. BRG/DIST from ARP.

※図中に標高を示す数字がある場合、単位はメートル(m)である。The unit of measurement used to express elevation is meter(m).

Call sign	BRG / DIST from ARP	Remarks
10NM N	360°T / 10.0NM	海上 Over the sea
北大東島 Kitadaitojima	030°T / 6.8NM	北大東空港 Kitadaito Airport
10NM W	270°T / 10.0NM	海上 Over the sea

ROMD / MINAMIDAITO

Minimum Vectoring Altitude CHART

CHANGE : Shape of segment. Minimum vectoring altitude.

