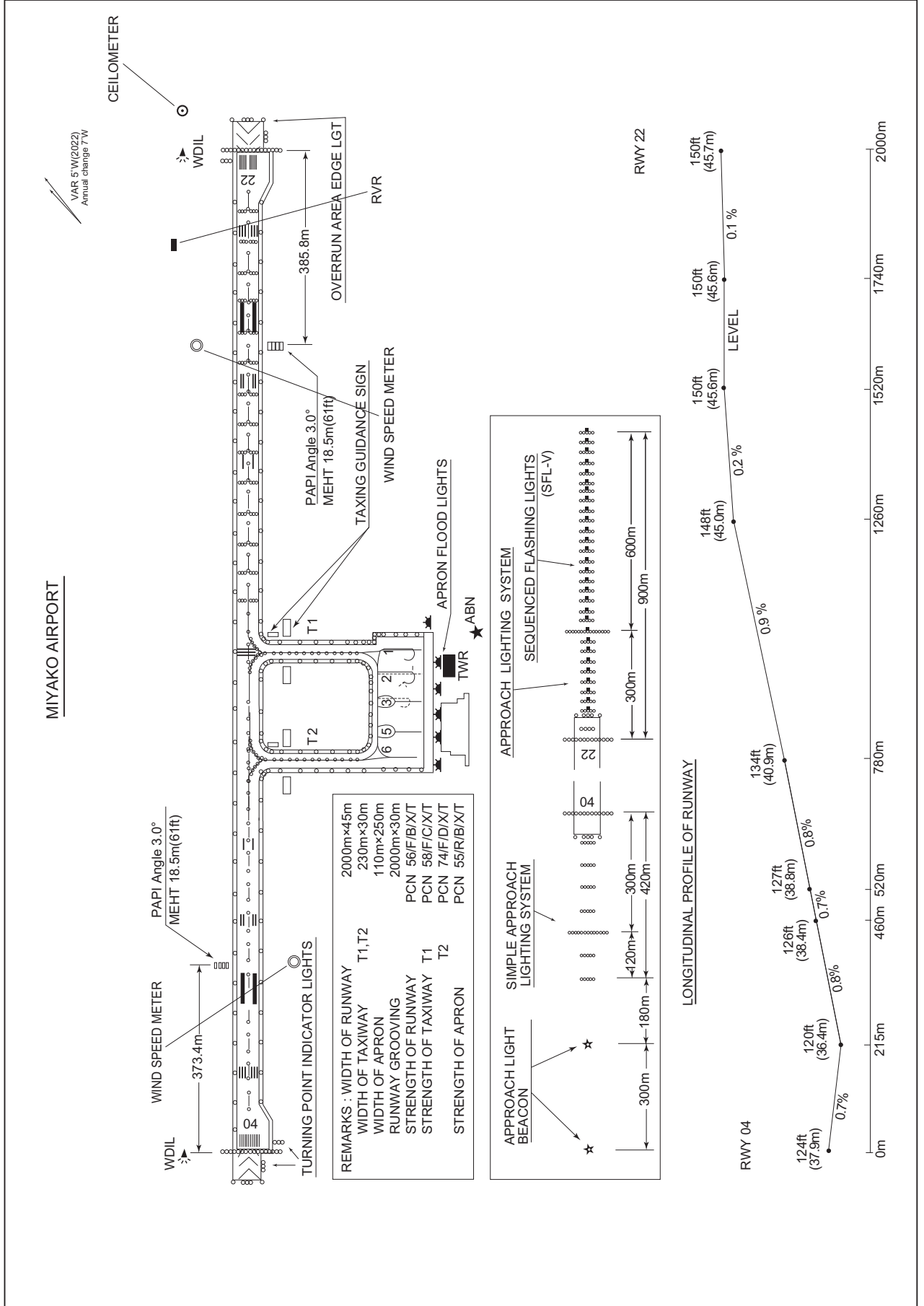


ROMY / MIYAKO

AD CHART

CHANGE : VAR.



INTENTIONALLY LEFT BLANK

STANDARD DEPARTURE CHART -INSTRUMENT

ROMY / MIYAKO

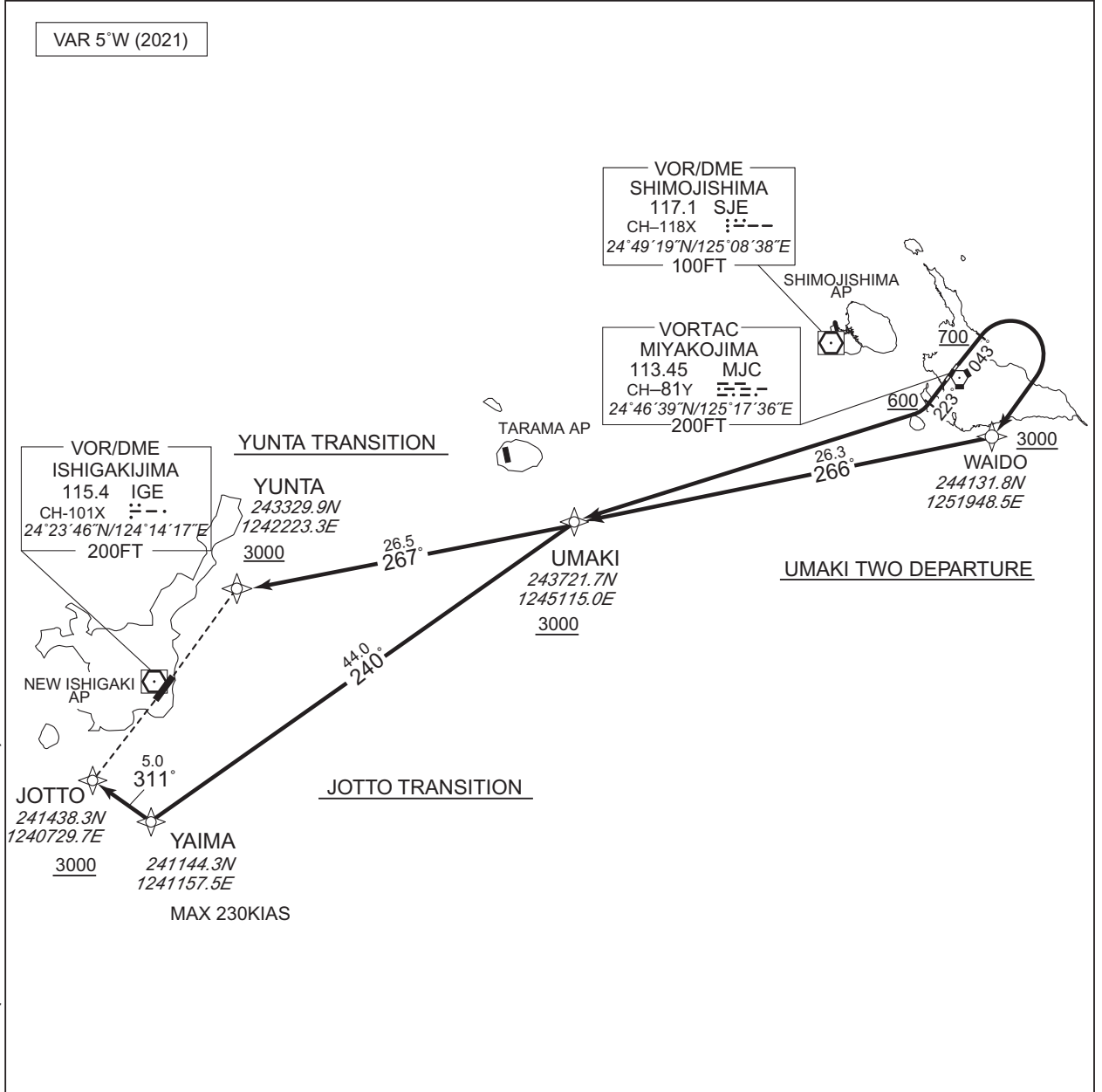
RNAV SID and TRANSITION

| | |
|--|-------------|
| <p>UMAKI TWO DEPARTURE JOTTO TRANSITION / YUNTA TRANSITION</p> | <p>RNP1</p> |
|--|-------------|

Note GNSS required.

VAR 5°W (2021)

CHANGE : Navigation Specification(Basic RNP1 → RNP1).



| |
|--|
| <p><u>UMAKI TWO DEPARTURE</u> RWY04 : Climb on HDG043° at or above 700FT, turn right direct to WAIDO at or above 3000FT, to UMAKI at or above 3000FT. RWY22 : Climb on HDG223° at or above 600FT, turn right direct to UMAKI at or above 3000FT.</p> |
| <p><u>YUNTA TRANSITION</u> From UMAKI at or above 3000FT, to YUNTA at or above 3000FT.</p> |
| <p><u>JOTTO TRANSITION</u> From UMAKI at or above 3000FT, to YAIMA, to JOTTO at or above 3000FT.</p> |

STANDARD DEPARTURE CHART -INSTRUMENT

ROMY / MIYAKO

RNAV SID and TRANSITION

UMAKI TWO DEPARTURE

RWY04

| Serial Number | Path Descriptor | Waypoint Identifier | Fly Over | Course °M(°T) | Magnetic Variation | Distance (NM) | Turn Direction | Altitude (FT) | Speed (KIAS) | Vertical Angle | Navigation Specification |
|---------------|-----------------|---------------------|----------|----------------|--------------------|---------------|----------------|---------------|--------------|----------------|--------------------------|
| 001 | VA | - | - | 043 (038.2) | -5.1 | - | - | +700 | - | - | RNP1 |
| 002 | DF | WAIDO | - | - | -5.1 | - | R | +3000 | - | - | RNP1 |
| 003 | TF | UMAKI | - | 266 (261.0) | -5.1 | 26.3 | - | +3000 | - | - | RNP1 |

RWY22

| Serial Number | Path Descriptor | Waypoint Identifier | Fly Over | Course °M(°T) | Magnetic Variation | Distance (NM) | Turn Direction | Altitude (FT) | Speed (KIAS) | Vertical Angle | Navigation Specification |
|---------------|-----------------|---------------------|----------|----------------|--------------------|---------------|----------------|---------------|--------------|----------------|--------------------------|
| 001 | VA | - | - | 223 (218.2) | -5.1 | - | - | +600 | - | - | RNP1 |
| 002 | DF | UMAKI | - | - | -5.1 | - | R | +3000 | - | - | RNP1 |

YUNTA TRANSITION

| Serial Number | Path Descriptor | Waypoint Identifier | Fly Over | Course °M(°T) | Magnetic Variation | Distance (NM) | Turn Direction | Altitude (FT) | Speed (KIAS) | Vertical Angle | Navigation Specification |
|---------------|-----------------|---------------------|----------|----------------|--------------------|---------------|----------------|---------------|--------------|----------------|--------------------------|
| 001 | IF | UMAKI | - | - | -5.1 | - | - | +3000 | - | - | RNP1 |
| 002 | TF | YUNTA | - | 267 (261.7) | -5.1 | 26.5 | - | +3000 | - | - | RNP1 |

JOTTO TRANSITION

| Serial Number | Path Descriptor | Waypoint Identifier | Fly Over | Course °M(°T) | Magnetic Variation | Distance (NM) | Turn Direction | Altitude (FT) | Speed (KIAS) | Vertical Angle | Navigation Specification |
|---------------|-----------------|---------------------|----------|----------------|--------------------|---------------|----------------|---------------|--------------|----------------|--------------------------|
| 001 | IF | UMAKI | - | - | -5.1 | - | - | +3000 | - | - | RNP1 |
| 002 | TF | YAIMA | - | 240 (234.5) | -5.1 | 44.0 | - | - | -230 | - | RNP1 |
| 003 | TF | JOTTO | - | 311 (305.5) | -5.1 | 5.0 | - | +3000 | - | - | RNP1 |

CHANGE : Navigation Specification(Basic RNP1 → RNP1).

STANDARD DEPARTURE CHART -INSTRUMENT

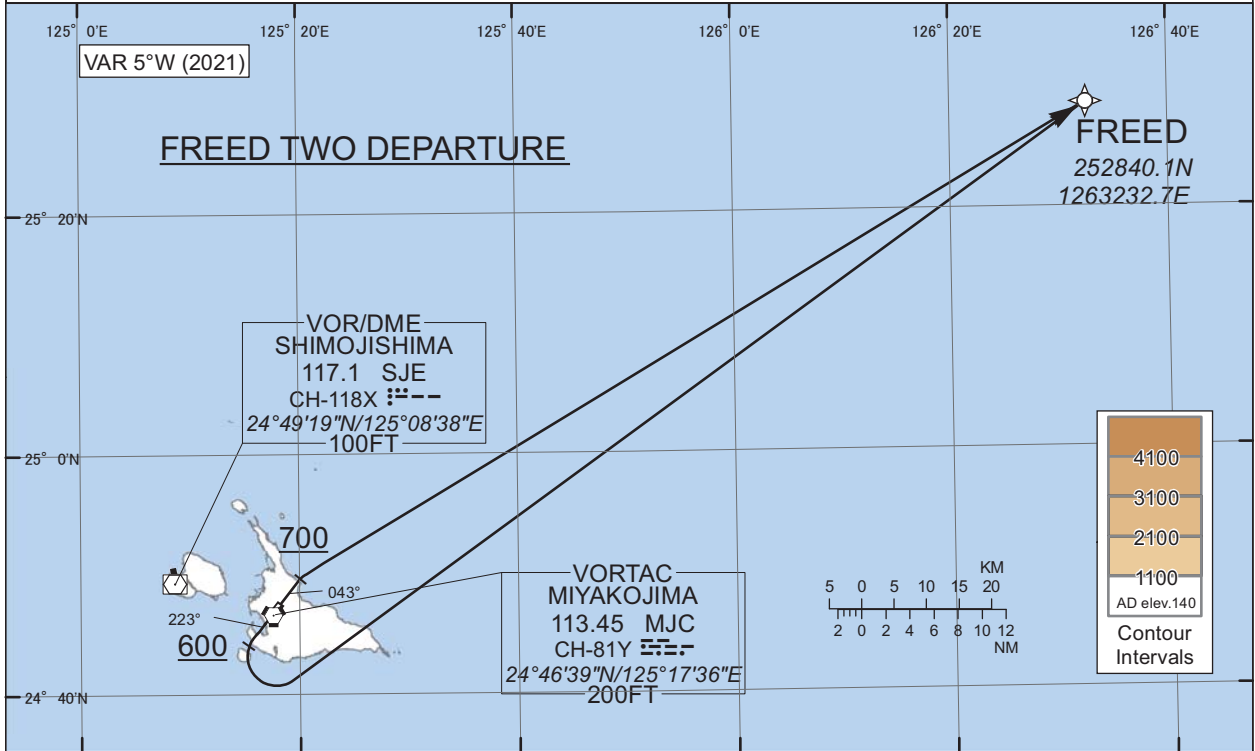
ROMY / MIYAKO

RNAV SID

FREED TWO DEPARTURE

RNP1

Note GNSS required.



FREED TWO DEPARTURE

RWY04 : Climb on HDG043° at or above 700FT, turn right direct to FREED.
 RWY22 : Climb on HDG223° at or above 600FT, turn left direct to FREED.

CHANGE : Navigation Specification(Basic RNP1 → RNP1).

RWY04

| Serial Number | Path Descriptor | Way point Identifier | Fly Over | Course °M(°T) | Magnetic Variation | Distance (NM) | Turn Direction | Altitude (FT) | Speed (KIAS) | Vertical Angle | Navigation Specification |
|---------------|-----------------|----------------------|----------|----------------|--------------------|---------------|----------------|---------------|--------------|----------------|--------------------------|
| 001 | VA | - | - | 043 (038.2) | -5.1 | - | - | +700 | - | - | RNP1 |
| 002 | DF | FREED | - | - | -5.1 | - | R | - | - | - | RNP1 |

RWY22

| Serial Number | Path Descriptor | Way point Identifier | Fly Over | Course °M(°T) | Magnetic Variation | Distance (NM) | Turn Direction | Altitude (FT) | Speed (KIAS) | Vertical Angle | Navigation Specification |
|---------------|-----------------|----------------------|----------|----------------|--------------------|---------------|----------------|---------------|--------------|----------------|--------------------------|
| 001 | VA | - | - | 223 (218.2) | -5.1 | - | - | +600 | - | - | RNP1 |
| 002 | DF | FREED | - | - | -5.1 | - | L | - | - | - | RNP1 |

STANDARD DEPARTURE CHART -INSTRUMENT

ROMY / MIYAKO

SID

NAHA SIX DEPARTURE

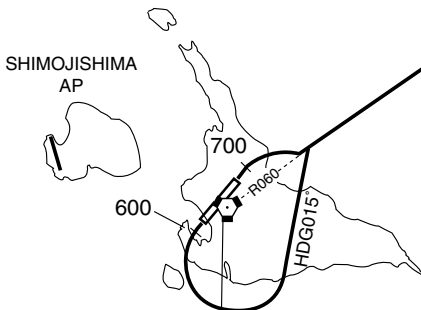
RWY 04 : Climb RWY HDG to 700FT, turn right...

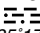
RWY 22 : Climb RWY HDG to 600FT, turn left HDG015°...
... to intercept and proceed via MJC R060 to PAYAO.

PAYAO
D53.6 MJC

NAHA SIX DEPARTURE

060°



VORTAC
MIYAKOJIMA
113.45 MJC
CH-81Y 
24°46'39"N/125°17'36"E
200FT

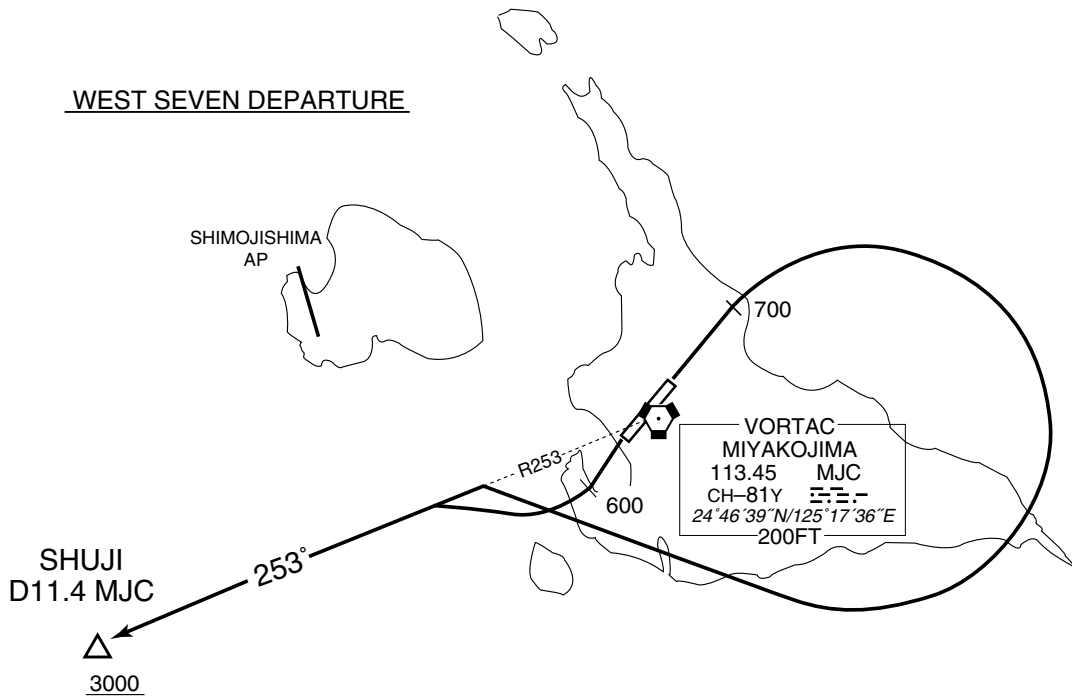
STANDARD DEPARTURE CHART -INSTRUMENT

ROMY / MIYAKO

SID

WEST SEVEN DEPARTURE

- RWY 04 : Climb RWY HDG to 700FT, turn right...
- RWY 22 : Climb RWY HDG to 600FT, turn right...
... to intercept and proceed via MJC R253 to SHUJI.
Cross SHUJI at or above 3000FT.



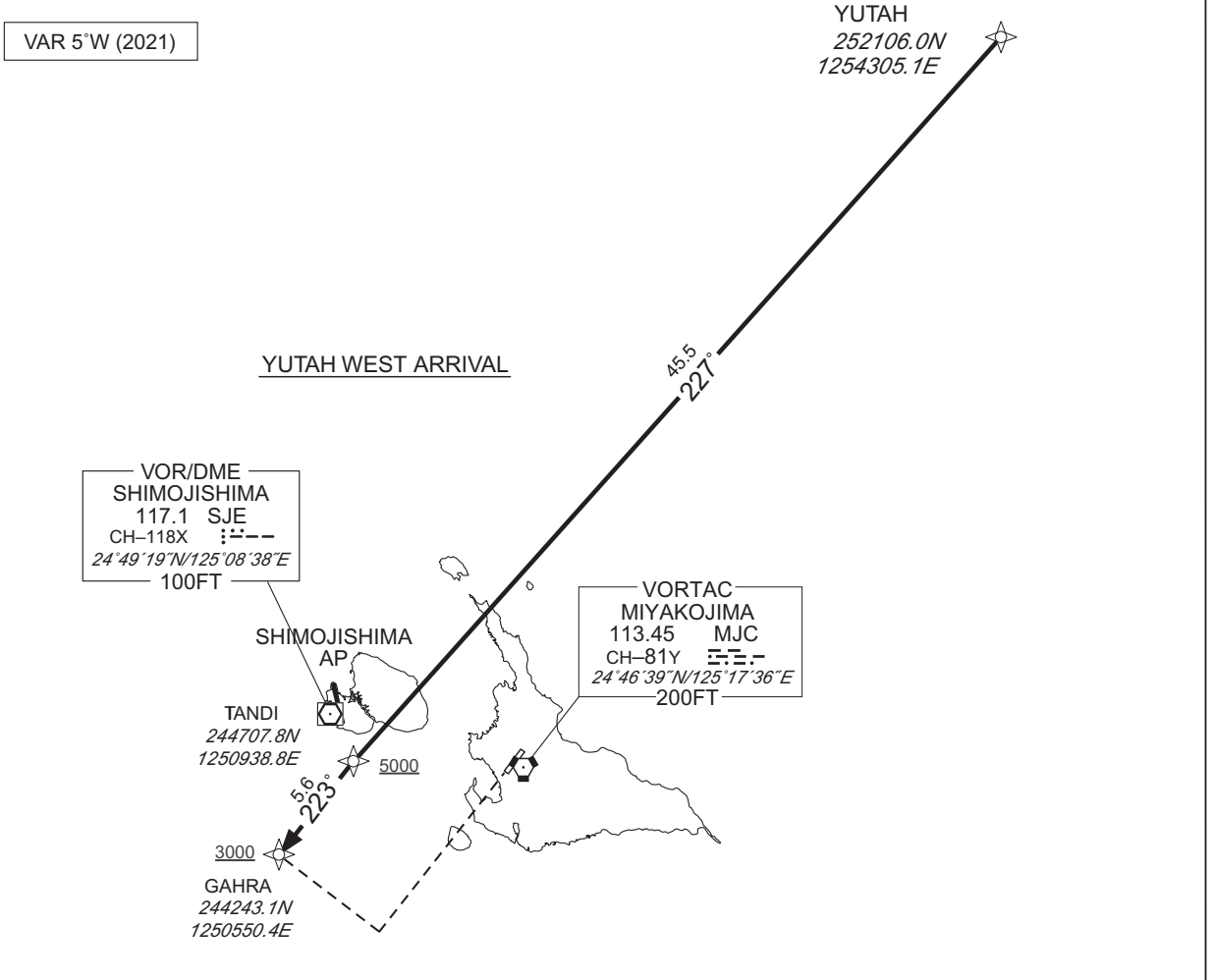
STANDARD ARRIVAL CHART - INSTRUMENT

ROMY / MIYAKO

RNAV STAR RWY04

| | |
|--------------------|------|
| YUTAH WEST ARRIVAL | RNP1 |
|--------------------|------|

Note GNSS required.



YUTAH WEST ARRIVAL

From YUTAH, to TANDI at or above 5000FT, to GAHRA at or above 3000FT.

CHANGE : Navigation Specification(Basic RNP1 → RNP1).

| Serial Number | Path Descriptor | Waypoint Identifier | Fly Over | Course °M(°T) | Magnetic Variation | Distance (NM) | Turn Direction | Altitude (FT) | Speed (KIAS) | Vertical Angle | Navigation Specification |
|---------------|-----------------|---------------------|----------|----------------|--------------------|---------------|----------------|---------------|--------------|----------------|--------------------------|
| 001 | IF | YUTAH | — | — | -5.1 | — | — | — | — | — | RNP1 |
| 002 | TF | TANDI | — | 227 (221.8) | -5.1 | 45.5 | — | +5000 | — | — | RNP1 |
| 003 | TF | GAHRA | — | 223 (218.1) | -5.1 | 5.6 | — | +3000 | — | — | RNP1 |

STANDARD ARRIVAL CHART - INSTRUMENT

ROMY / MIYAKO

RNAV STAR RWY22

YUTAH NORTH ARRIVAL

RNP1

Note GNSS required.

VAR 5°W (2021)

YUTAH NORTH ARRIVAL

YUTAH
252106.0N
1254305.1E

31.3
218°

1600

MIBAI
245444.1N
1252426.3E

VOR/DME
SHIMOJISHIMA
117.1 SJE
CH-118X
24°49'19"N/125°08'38"E
100FT

SHIMOJISHIMA
AP

VORTAC
MIYAKOJIMA
113.45 MJC
CH-81Y
24°46'39"N/125°17'36"E
200FT

YUTAH NORTH ARRIVAL

From YUTAH, to MIBAI at or above 1600FT.

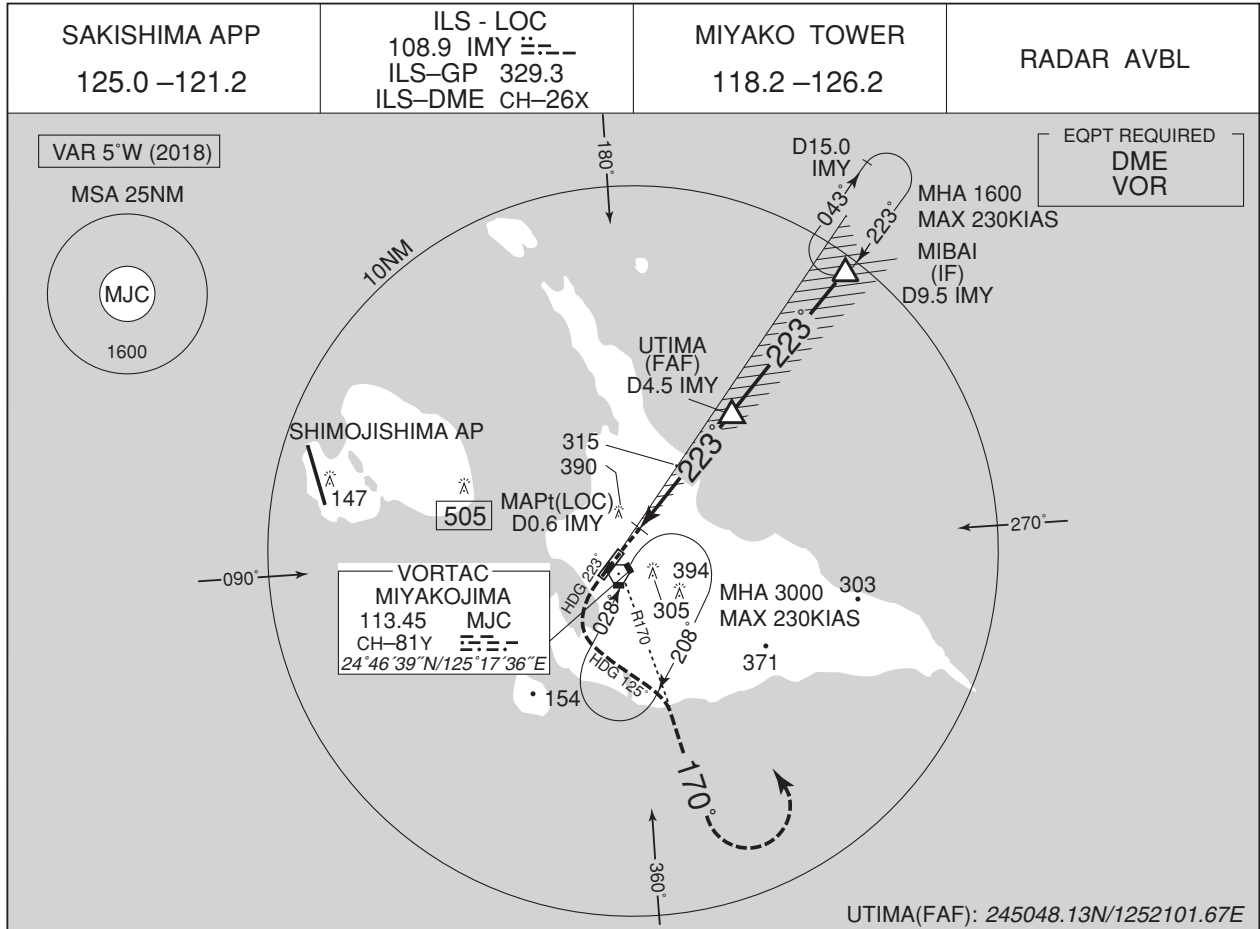
| Serial Number | Path Descriptor | Waypoint Identifier | Fly Over | Course °M(°T) | Magnetic Variation | Distance (NM) | Turn Direction | Altitude (FT) | Speed (KIAS) | Vertical Angle | Navigation Specification |
|---------------|-----------------|---------------------|----------|----------------|--------------------|---------------|----------------|---------------|--------------|----------------|--------------------------|
| 001 | IF | YUTAH | — | — | -5.1 | — | — | — | — | — | RNP1 |
| 002 | TF | MIBAI | — | 218 (212.7) | -5.1 | 31.3 | — | +1600 | — | — | RNP1 |

CHANGE : Navigation Specification(Basic RNP1 → RNP1).

INSTRUMENT APPROACH CHART

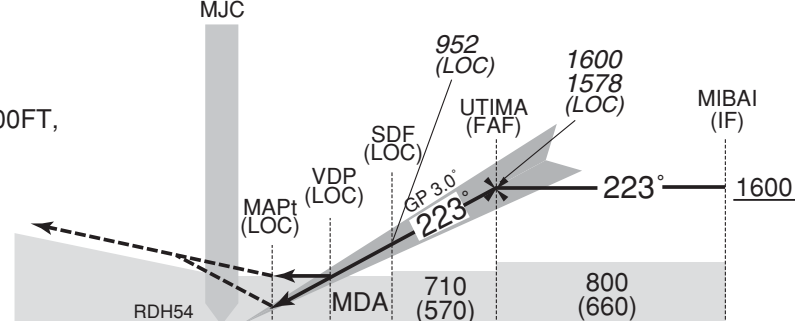
ROMY / MIYAKO

ILS Z or LOC Z RWY22



| | | | | | |
|----------------------|------|-----|------|------|------|
| NM to IMY | MAPt | 2 | 3 | 4 | FAF |
| ALT (3.0° APCH Path) | - | 781 | 1100 | 1419 | 1578 |

MISSED APPROACH
 Climb to 600FT on HDG 223°, turn left HDG 125° to intercept and proceed via MJC R170 to 2000FT, turn left, direct to MJC VORTAC and hold at 3000FT. Contact SAKISHIMA APP.
 Timing not authorized for defining the MAPt.



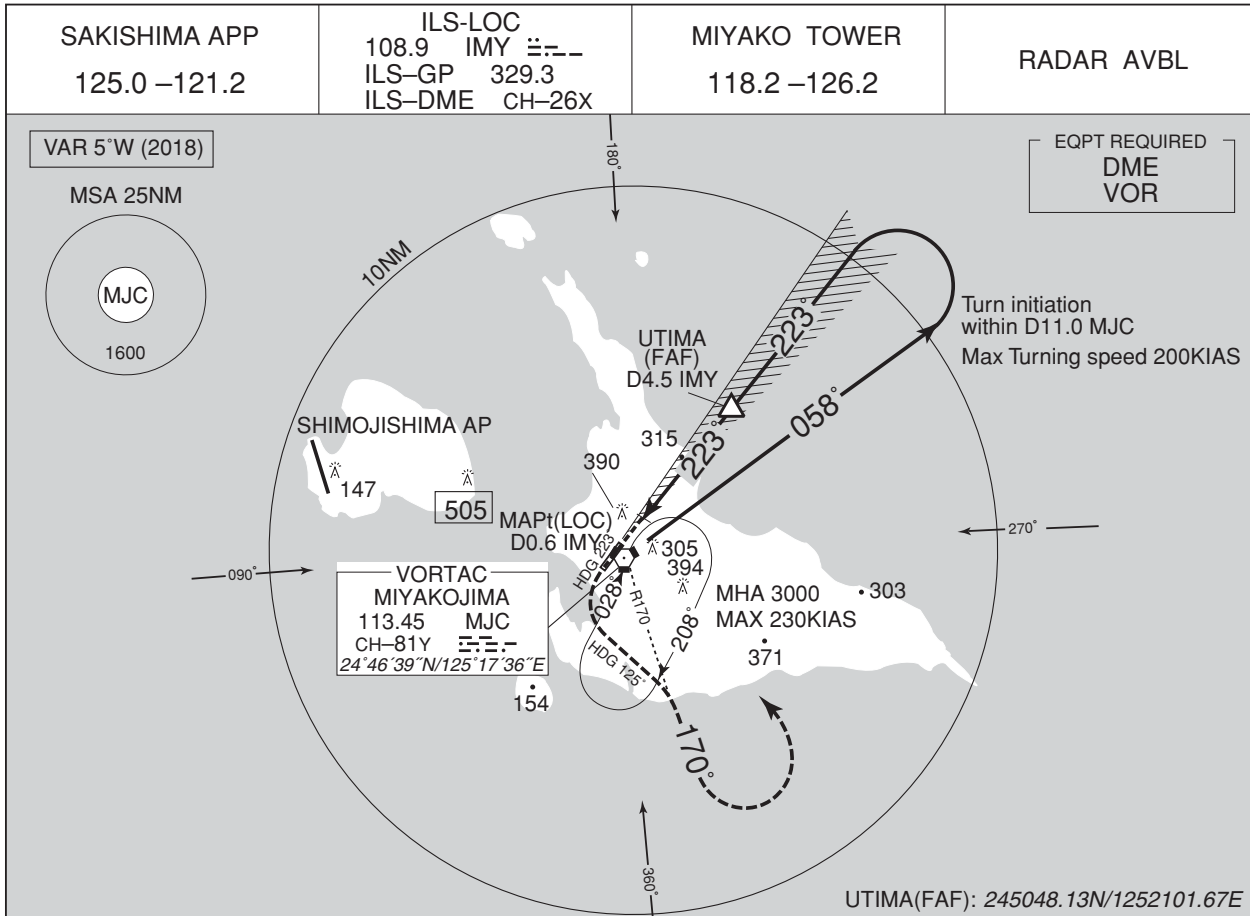
| | | | | | | |
|------------|-----|-----|-----|-----|-----|-----|
| DME to IMY | 0.2 | 0.6 | 1.4 | 2.5 | 4.5 | 9.5 |
| NM to THR | 0 | 0.4 | 1.3 | 2.4 | 4.3 | 9.3 |

| | | | | | | |
|---------------|-----------|---------------|-----------|--------------|-----------|------|
| MINIMA | | THR elev. 150 | | AD elev. 140 | | |
| CAT | CAT I | | LOC | | CIRCLING | |
| | DA(H) | RVR/CMV | MDA(H) | RVR/CMV | MDA(H) | VIS |
| A | 350 (200) | 550 | 580 (440) | 900 | 710 (570) | 1600 |
| B | | | | 1000 | | |
| C | | | | 1400 | | |
| D | | | | 1400 | | |

INSTRUMENT APPROACH CHART

ROMY / MIYAKO

ILS Y or LOC Y RWY22

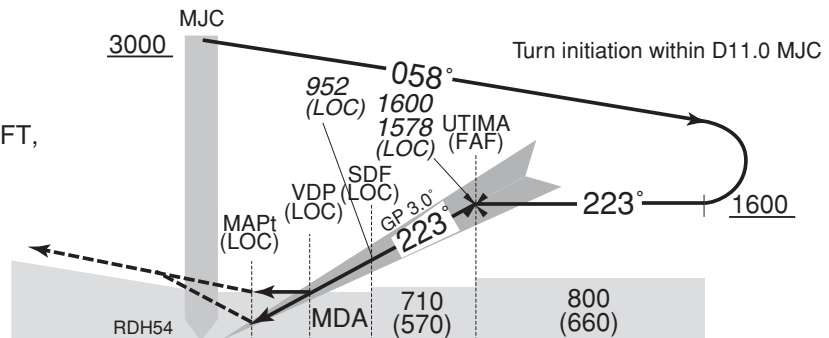


| | | | | | |
|----------------------|------|-----|------|------|------|
| NM to IMY | MAPt | 2 | 3 | 4 | FAF |
| ALT (3.0° APCH Path) | - | 781 | 1100 | 1419 | 1578 |

MISSED APPROACH

Climb to 600FT on HDG 223°, turn left HDG 125° to intercept and proceed via MJC R170 to 2000FT, turn left, direct to MJC VORTAC and hold at 3000FT. Contact SAKISHIMA APP.

Timing not authorized for defining the MAPt.



| | | | | | |
|------------|-----|-----|-----|-----|-----|
| DME to IMY | 0.2 | 0.6 | 1.4 | 2.5 | 4.5 |
| NM to THR | 0 | 0.4 | 1.3 | 2.4 | 4.3 |

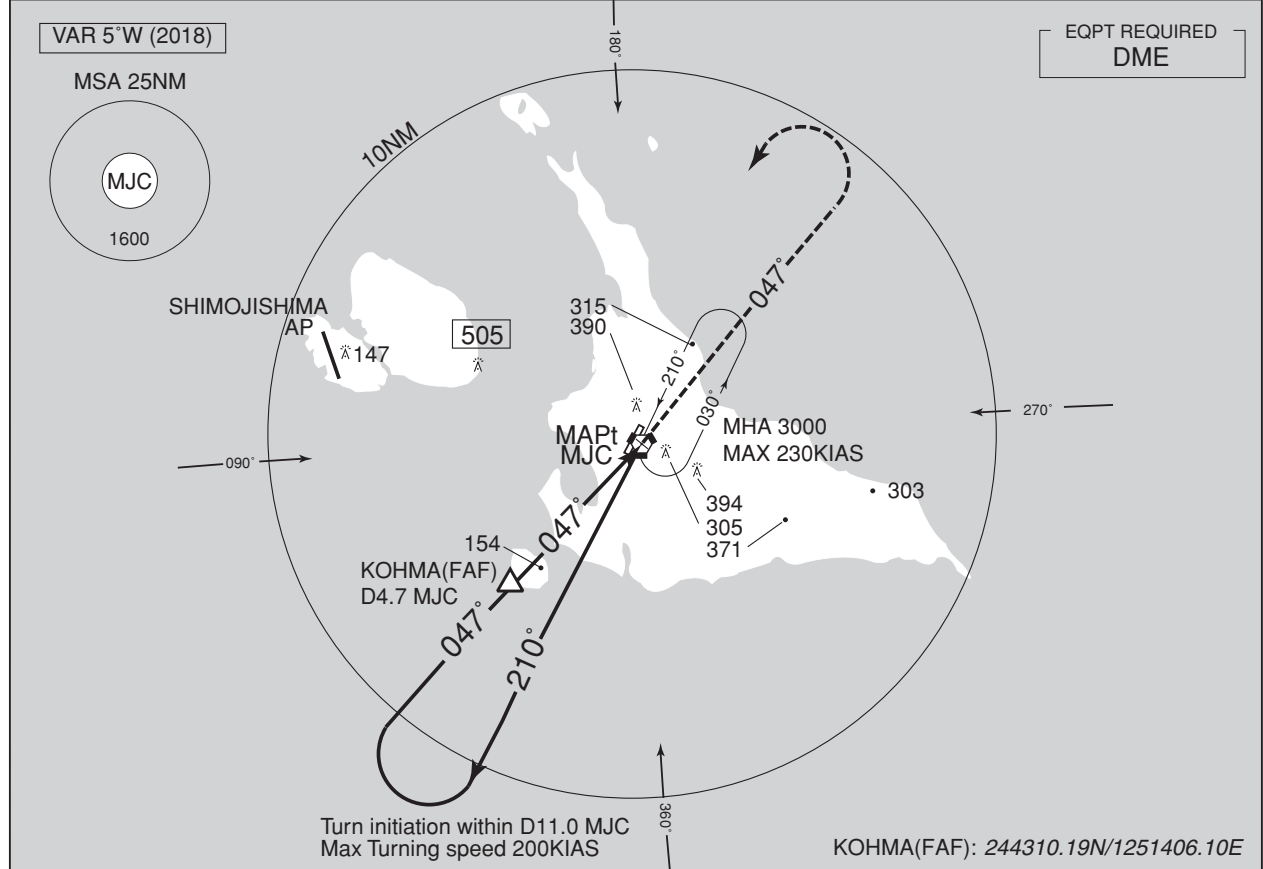
| | | | | | | |
|--------|-----------|---------------|-----------|--------------|-----------|------|
| MINIMA | | THR elev. 150 | | AD elev. 140 | | |
| CAT | CAT I | | LOC | | CIRCLING | |
| | DA(H) | RVR/CMV | MDA(H) | RVR/CMV | MDA(H) | VIS |
| A | 350 (200) | 550 | 580 (440) | 900 | 710 (570) | 1600 |
| B | | | | 1000 | | 2400 |
| C | | | | 1400 | | 3200 |
| D | | | | | | |

INSTRUMENT APPROACH CHART

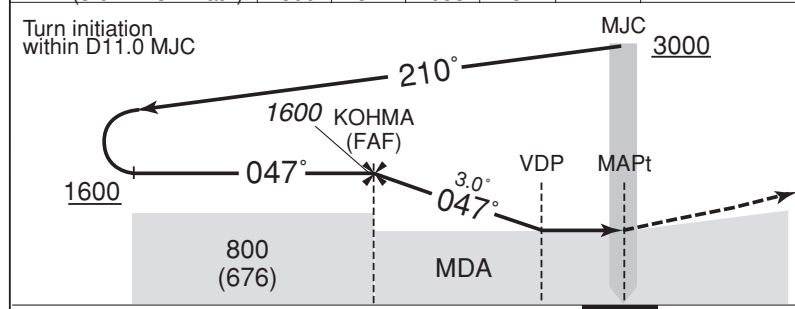
ROMY / MIYAKO

VOR RWY04

| | | | |
|-------------------------------|---|------------------------------|------------|
| SAKISHIMA APP 125.0 –121.2 | MIYAKOJIMA VORTAC 113.45 MJC CH-81Y ㊦㊦㊦ 24°46'39"N/125°17'36"E | MIYAKO TOWER 118.2 –126.2 | RADAR AVBL |
|-------------------------------|---|------------------------------|------------|



| | | | | | |
|----------------------|------|------|------|-----|------|
| NM to MJC | FAF | 4 | 3 | 2 | MAPt |
| ALT (3.0° APCH Path) | 1600 | 1374 | 1055 | 737 | - |



MISSED APPROACH
Climb via MJC R047 to 2000FT, turn left, direct to MJC VORTAC and hold at 3000FT. Contact SAKISHIMA APP.
Timing not authorized for defining the MAPt.

| | | | | |
|--|-----|-----|-----|------------|
| | 4.7 | 1.3 | 0.2 | DME to MJC |
| | 4.5 | 1.1 | 0 | NM to THR |

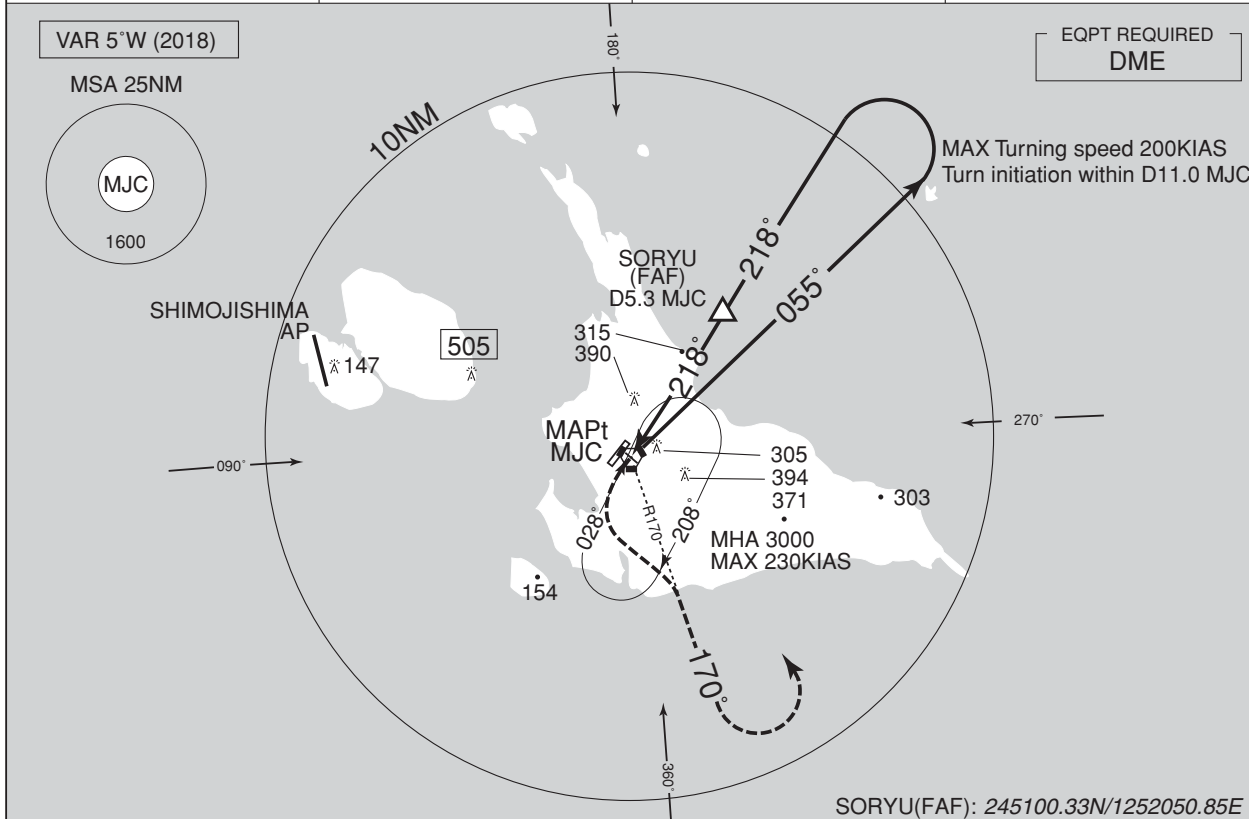
| | | | | |
|--------|-----------|---------------|----------------|------|
| MINIMA | | THR elev. 124 | AD elev. 140 | |
| CAT | | | CIRCLING | |
| | MDA(H) | CMV | MDA(H) VIS | |
| A | 510 (386) | 1200 | 710 (570) 1600 | |
| B | | 1300 | | |
| C | | 1400 | | 2400 |
| D | | 1600 | | 3200 |

INSTRUMENT APPROACH CHART

ROMY / MIYAKO

VOR RWY22

| | | | |
|-------------------------------|--|------------------------------|------------|
| SAKISHIMA APP 125.0 -121.2 | MIYAKOJIMA VORTAC 113.45 MJC CH-81Y 53.3 24°46'39"N/125°17'36"E | MIYAKO TOWER 118.2 -126.2 | RADAR AVBL |
|-------------------------------|--|------------------------------|------------|

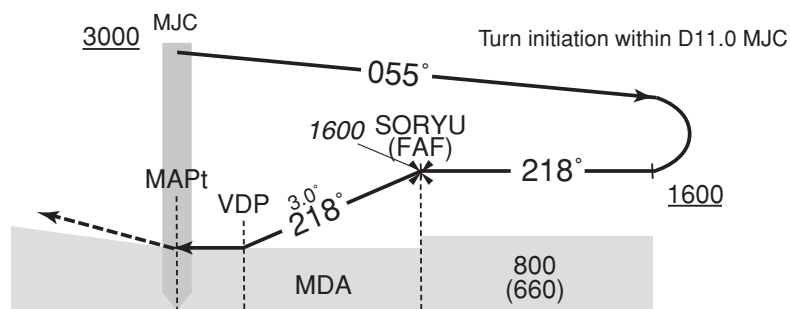


| | | | | | |
|----------------------|------|-----|------|------|------|
| NM to MJC | MAPt | 3 | 4 | 5 | FAF |
| ALT (3.0° APCH Path) | - | 881 | 1200 | 1518 | 1600 |

MISSED APPROACH

Turn left, climb via MJC R170 to 2000FT, turn left, direct to MJC VORTAC and hold at 3000FT. Contact SAKISHIMA APP.

Timing not authorized for defining the MAPt.



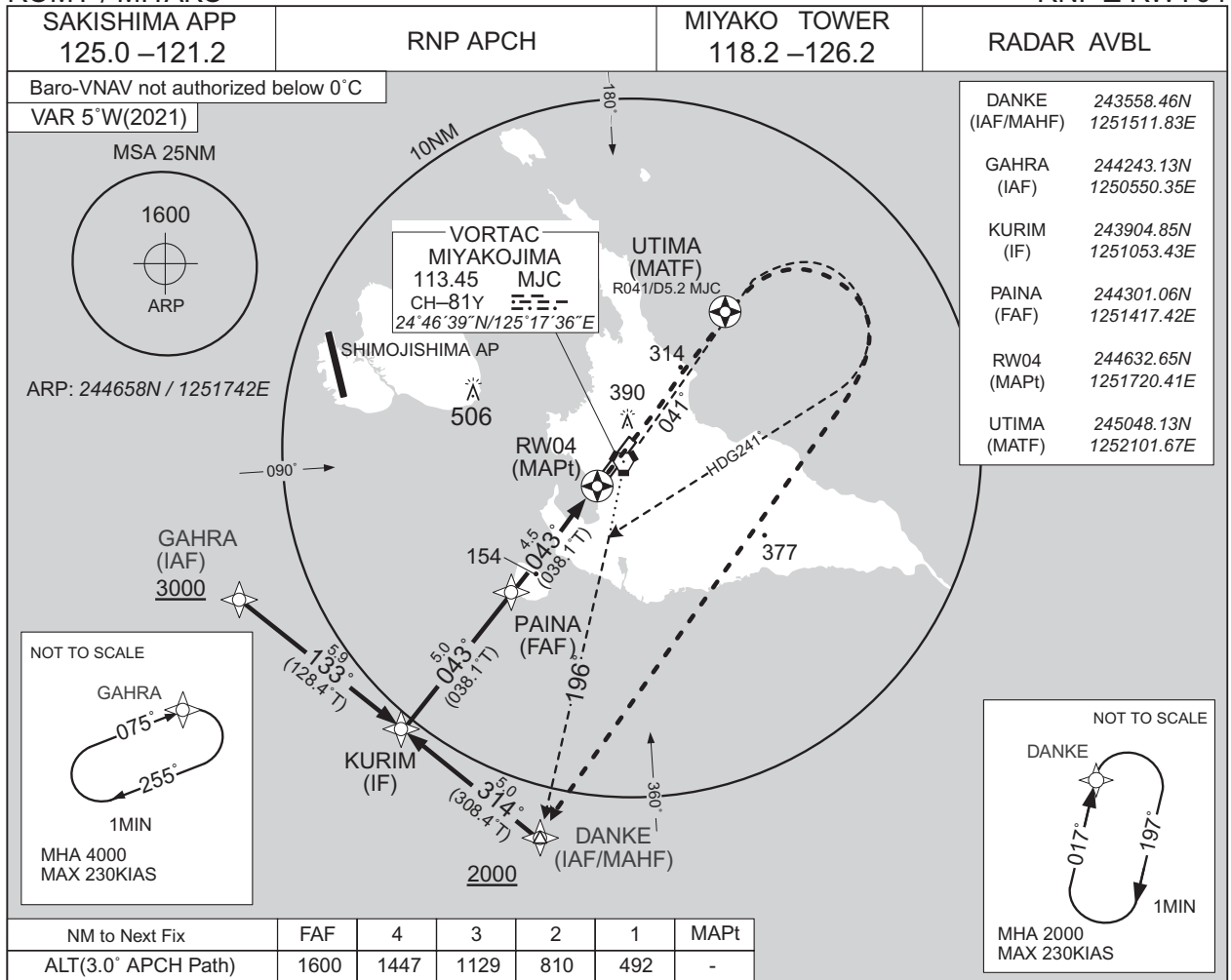
| | | | |
|------------|-----|-----|-----|
| DME to MJC | 0.9 | 2.3 | 5.3 |
| NM to THR | 0 | 1.5 | 4.4 |

| MINIMA | | THR elev. 150 | AD elev. 140 | | | |
|--------|-----------|---------------|--------------|------|------|------|
| CAT | CIRCLING | | MDA(H) | VIS | | |
| | MDA(H) | RVR/CMV | | | | |
| A | 640 (500) | 1000 | 710 (570) | 1600 | | |
| B | | 1200 | | 2400 | | |
| C | | | | | 1600 | 3200 |
| D | | | | | | |

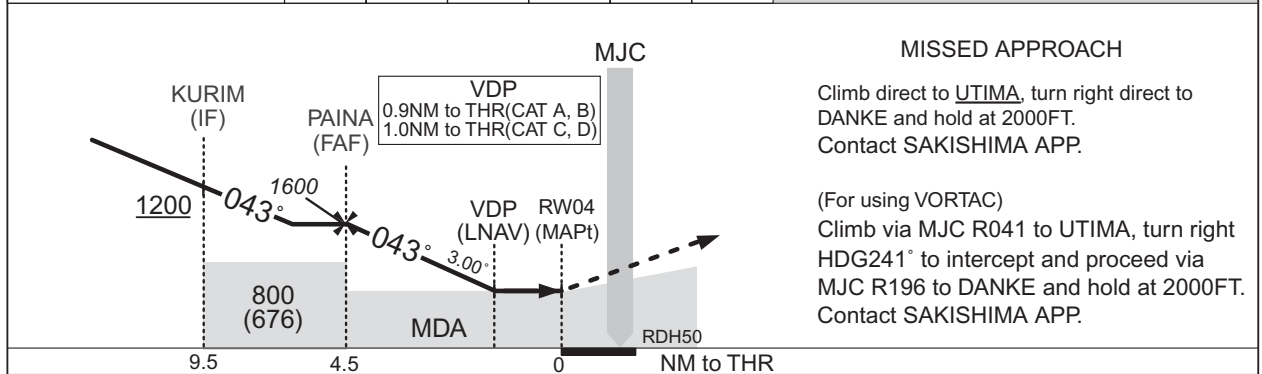
INSTRUMENT APPROACH CHART

ROMY / MIYAKO

RNP Z RWY04



CHANGE:PROC renamed. Requirement for RNP.



| | | | | | | |
|--------|-----------|---------------|----------|--------------|----------|------|
| MINIMA | | THR elev. 124 | | AD elev. 140 | | |
| CAT | LNAV/VNAV | | LNAV | | CIRCLING | |
| | DA(H) | CMV | MDA(H) | CMV | MDA(H) | VIS |
| A | 460(336) | 1200 | 460(336) | 1200 | 710(570) | 1600 |
| B | | 1300 | | 1300 | | |
| C | 480(356) | 1400 | 480(356) | 1400 | | 2400 |
| D | | 1600 | | 1600 | | 3200 |

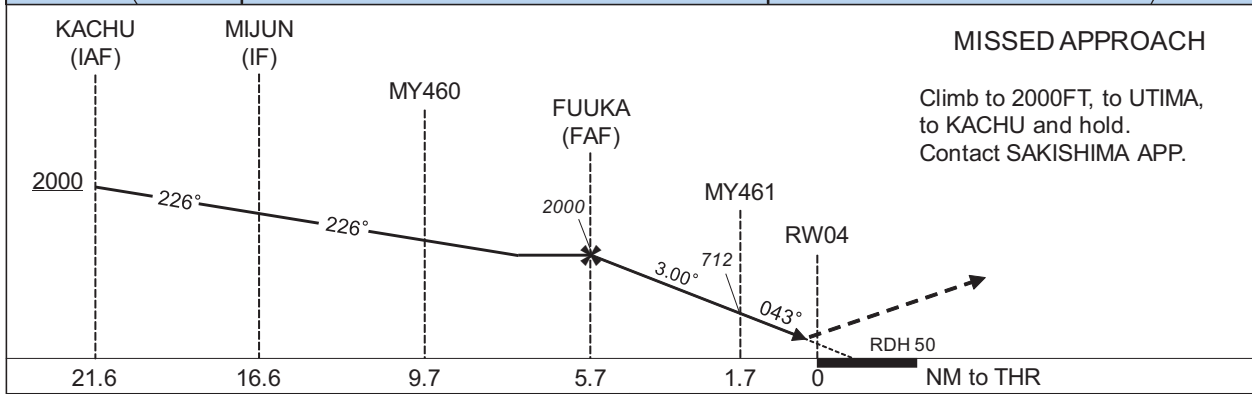
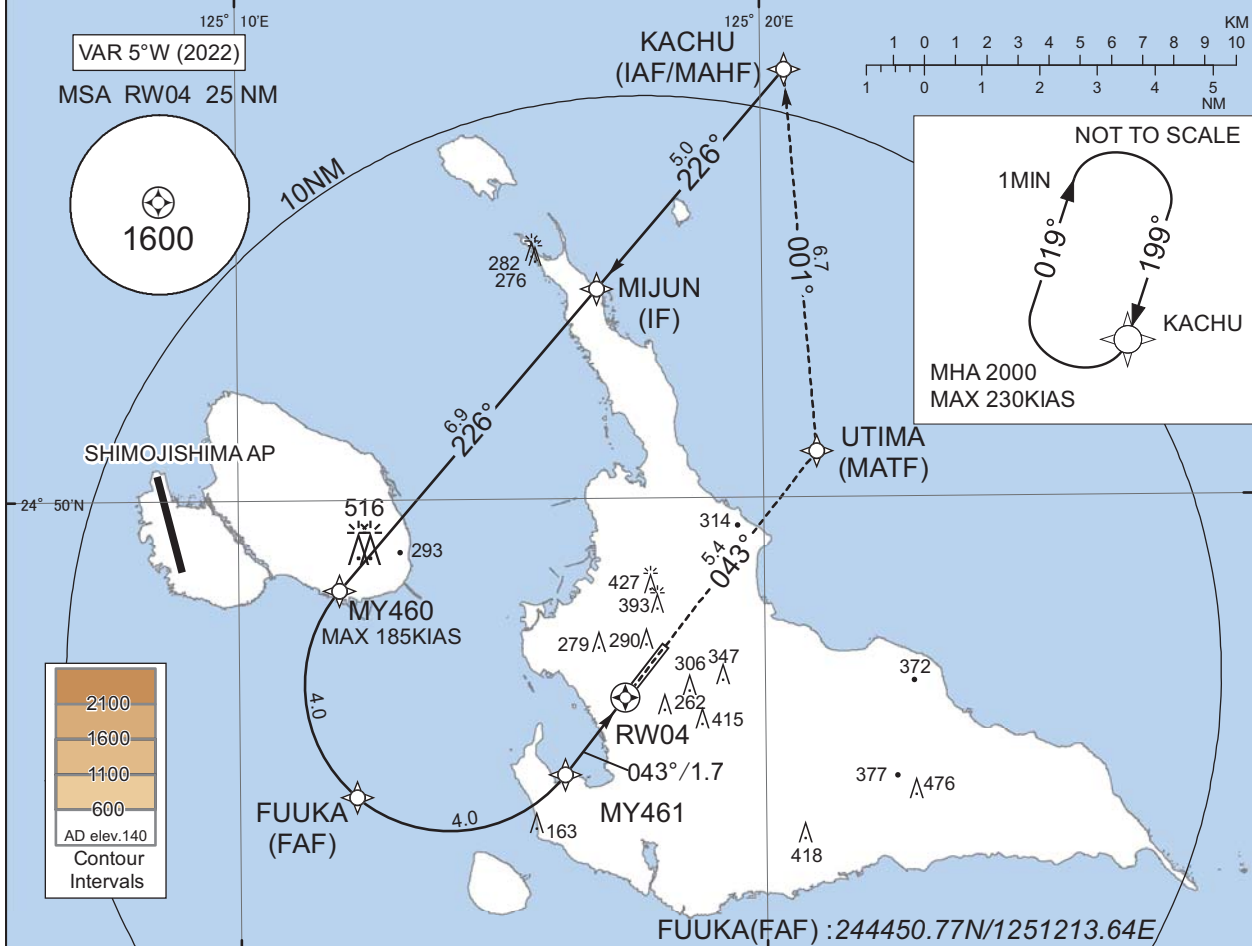
INSTRUMENT APPROACH CHART

ROMY / MIYAKO

RNP Y RWY04(AR)

| | | | |
|--------------------------------|------------------------|-------------------------------|------------|
| SAKISHIMA APP 125.0 - 121.2 | RNP AR RF required. | MIYAKO TOWER 118.2 - 126.2 | RADAR AVBL |
|--------------------------------|------------------------|-------------------------------|------------|

For uncompensated Baro-VNAV systems, procedure not authorized below 0°C / above 45°C



| MINIMA | THR elev. 124 | | AD elev. 140 | |
|--------|---------------|------|--------------|------|
| | RNP 0.29 | | RNP 0.30 | |
| CAT | DA(H) | CMV | DA(H) | CMV |
| A | - | - | - | - |
| B | - | - | - | - |
| C | 424(300) | 1400 | 430(306) | 1400 |
| D | 424(300) | 1600 | 440(316) | 1600 |

Authorization Required

CHANGE : PROC renamed. Requirement for RNP.

INSTRUMENT APPROACH CHART

ROMY / MIYAKO

RNP Y RWY04(AR)

Coding Table

| Serial Number | Path Descriptor | Waypoint Identifier | Fly Over | Course °M(°T) | Magnetic Variation | Distance (NM) | Turn Direction | Altitude (FT) | Speed (KIAS) | VPA/ RDH (°/FT) | RNP Value |
|---------------|------------------------------------|---------------------|----------|----------------|--------------------|---------------|----------------|---------------|--------------|-----------------|--------------|
| 001 | IF | KACHU | - | - | -5.2 | - | - | +2000 | - | - | - |
| 002 | TF | MIJUN | - | 226 (220.8) | -5.2 | 5.0 | - | - | - | - | 1.0 |
| 003 | TF | MY460 | - | 226 (220.7) | -5.2 | 6.9 | - | +2000 | -185 | - | 1.0 |
| 004 | RF Center: MYRF1 r=2.52NM | FUUKA | - | - | -5.2 | 4.0 | L | 2000 | - | - | 1.0 |
| 005 | RF Center: MYRF1 r=2.52NM | MY461 | - | - | -5.2 | 4.0 | L | 712 | - | -3.00 | 0.29 0.30 |
| 006 | TF | RW04 | Y | 043 (038.1) | -5.2 | 1.7 | - | 174 | - | -3.00/50 | 0.29 0.30 |
| 007 | TF | UTIMA | - | 043 (038.2) | -5.2 | 5.4 | - | - | - | - | 1.0 |
| 008 | TF | KACHU | - | 001 (355.6) | -5.2 | 6.7 | - | 2000 | - | - | 1.0 |

| Path | Waypoint Identifier | Inbound Course °M(°T) | Magnetic Variation | Outbound Time (MIN) | Turn Direction | Minimum Altitude (FT) | Maximum Altitude (FT) | Speed (KIAS) | RNP Value |
|------|---------------------|-----------------------|--------------------|---------------------|----------------|-----------------------|-----------------------|------------------|-----------|
| Hold | KACHU | 199 (193.5) | -5.2 | 1.0 (-14000) | R | 2000 | FL140 | -230 (-14000) | 1.0 |

Waypoint Coordinates

| Waypoint Identifier | Coordinates | RF Arc Center Identifier | Coordinates |
|---------------------|--------------------------|--------------------------|--------------------------|
| KACHU | 245726.14N / 1252027.95E | MYRF1 | 244646.77N / 1251400.81E |
| MIJUN | 245338.80N / 1251651.84E | | |
| MY460 | 244826.09N / 1251155.10E | | |
| FUUKA | 244450.77N / 1251213.64E | | |
| MY461 | 244512.72N / 1251611.26E | | |
| RW04 | 244632.65N / 1251720.41E | | |
| UTIMA | 245048.13N / 1252101.67E | | |

CHANGE : PROC renamed.

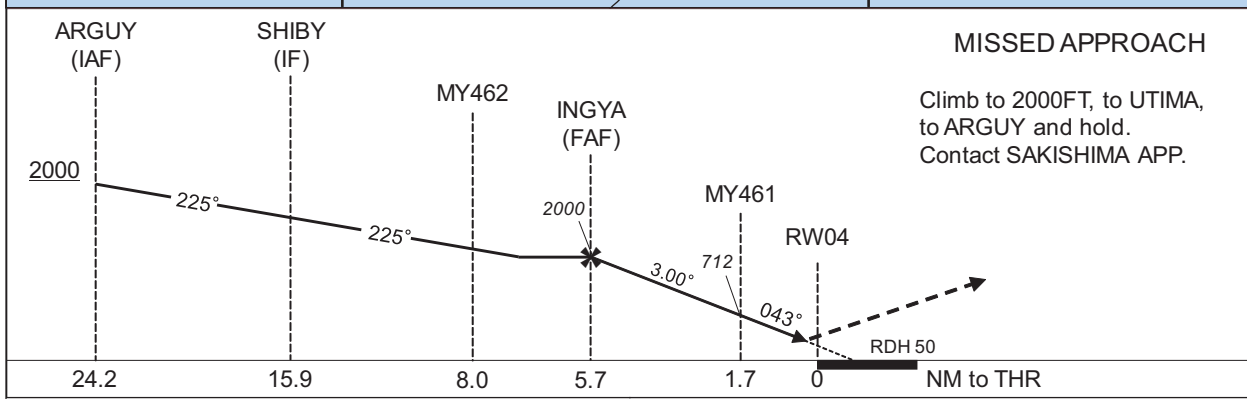
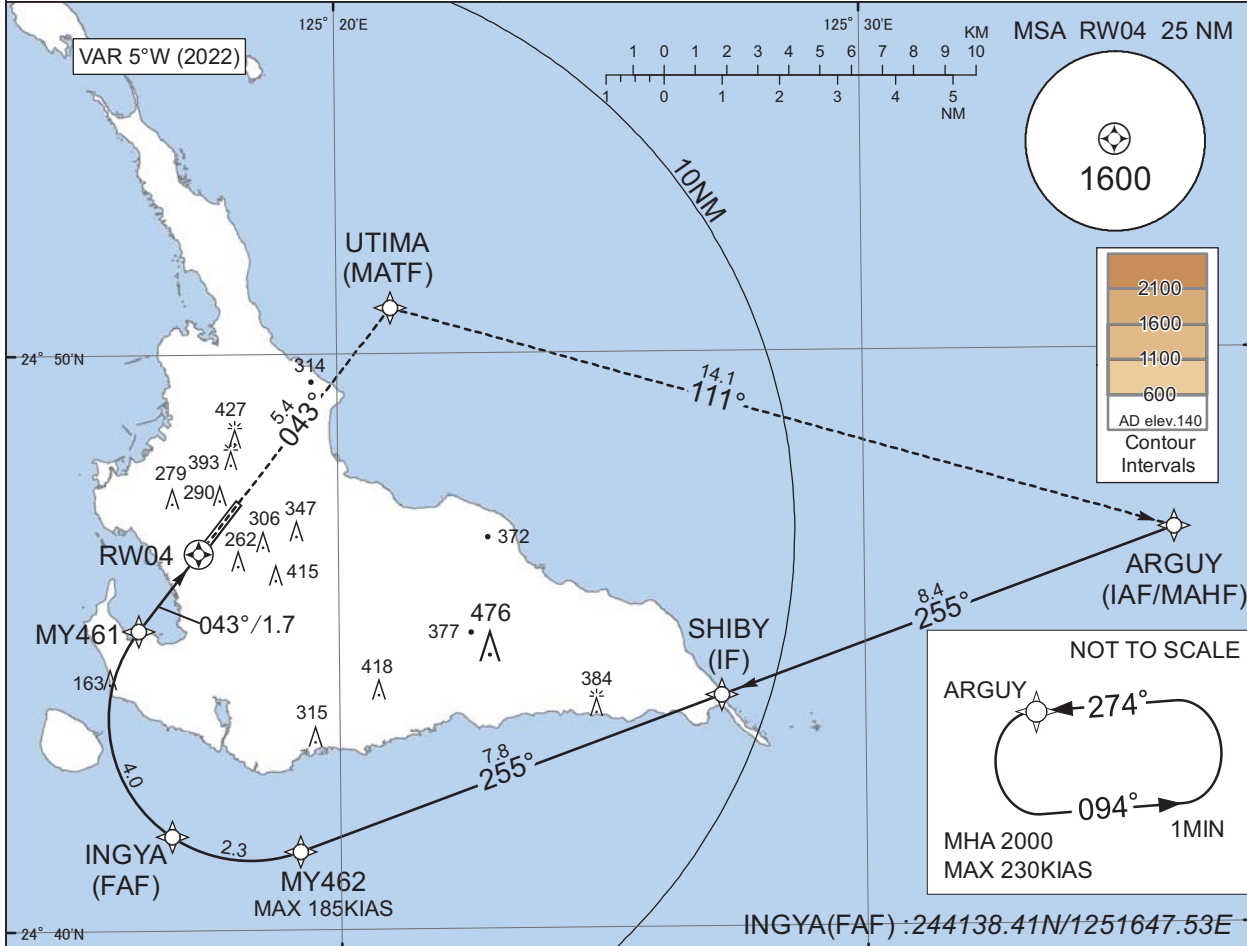
INSTRUMENT APPROACH CHART

ROMY / MIYAKO

RNP X RWY04(AR)

| | | | |
|--------------------------------|------------------------|-------------------------------|------------|
| SAKISHIMA APP 125.0 - 121.2 | RNP AR RF required. | MIYAKO TOWER 118.2 - 126.2 | RADAR AVBL |
|--------------------------------|------------------------|-------------------------------|------------|

For uncompensated Baro-VNAV systems, procedure not authorized below 0°C / above 45°C



| MINIMA | THR elev. 124 | | AD elev. 140 | |
|--------|---------------|------|--------------|------|
| | RNP 0.29 | | RNP 0.30 | |
| | DA(H) | CMV | DA(H) | CMV |
| A | - | - | - | - |
| B | - | - | - | - |
| C | 424(300) | 1400 | 430(306) | 1400 |
| D | | 1600 | 440(316) | 1600 |

Authorization Required

CHANGE : PROC renamed. Requirement for RNP.

INSTRUMENT APPROACH CHART

ROMY / MIYAKO

RNP X RWY04(AR)

Coding Table

| Serial Number | Path Descriptor | Waypoint Identifier | Fly Over | Course °M(°T) | Magnetic Variation | Distance (NM) | Turn Direction | Altitude (FT) | Speed (KIAS) | VPA/RDH (°/FT) | RNP Value |
|---------------|------------------------------------|---------------------|----------|----------------|--------------------|---------------|----------------|---------------|--------------|----------------|--------------|
| 001 | IF | ARGUY | - | - | -5.2 | - | - | +2000 | - | - | - |
| 002 | TF | SHIBY | - | 255 (250.0) | -5.2 | 8.4 | - | - | - | - | 1.0 |
| 003 | TF | MY462 | - | 255 (250.0) | -5.2 | 7.8 | - | +2000 | -185 | - | 1.0 |
| 004 | RF Center: MYRF2 r=2.46NM | INGYA | - | - | -5.2 | 2.3 | R | 2000 | - | - | 1.0 |
| 005 | RF Center: MYRF2 r=2.46NM | MY461 | - | - | -5.2 | 4.0 | R | 712 | - | -3.00 | 0.29 0.30 |
| 006 | TF | RW04 | Y | 043 (038.1) | -5.2 | 1.7 | - | 174 | - | -3.00/50 | 0.29 0.30 |
| 007 | TF | UTIMA | - | 043 (038.2) | -5.2 | 5.4 | - | - | - | - | 1.0 |
| 008 | TF | ARGUY | - | 111 (106.1) | -5.2 | 14.1 | - | 2000 | - | - | 1.0 |

| Path | Waypoint Identifier | Inbound Course °M(°T) | Magnetic Variation | Outbound Time (MIN) | Turn Direction | Minimum Altitude (FT) | Maximum Altitude (FT) | Speed (KIAS) | RNP Value |
|------|---------------------|-----------------------|--------------------|---------------------|----------------|-----------------------|-----------------------|------------------|-----------|
| Hold | ARGUY | 274 (269.3) | -5.2 | 1.0 (-14000) | L | 2000 | FL140 | -230 (-14000) | 1.0 |

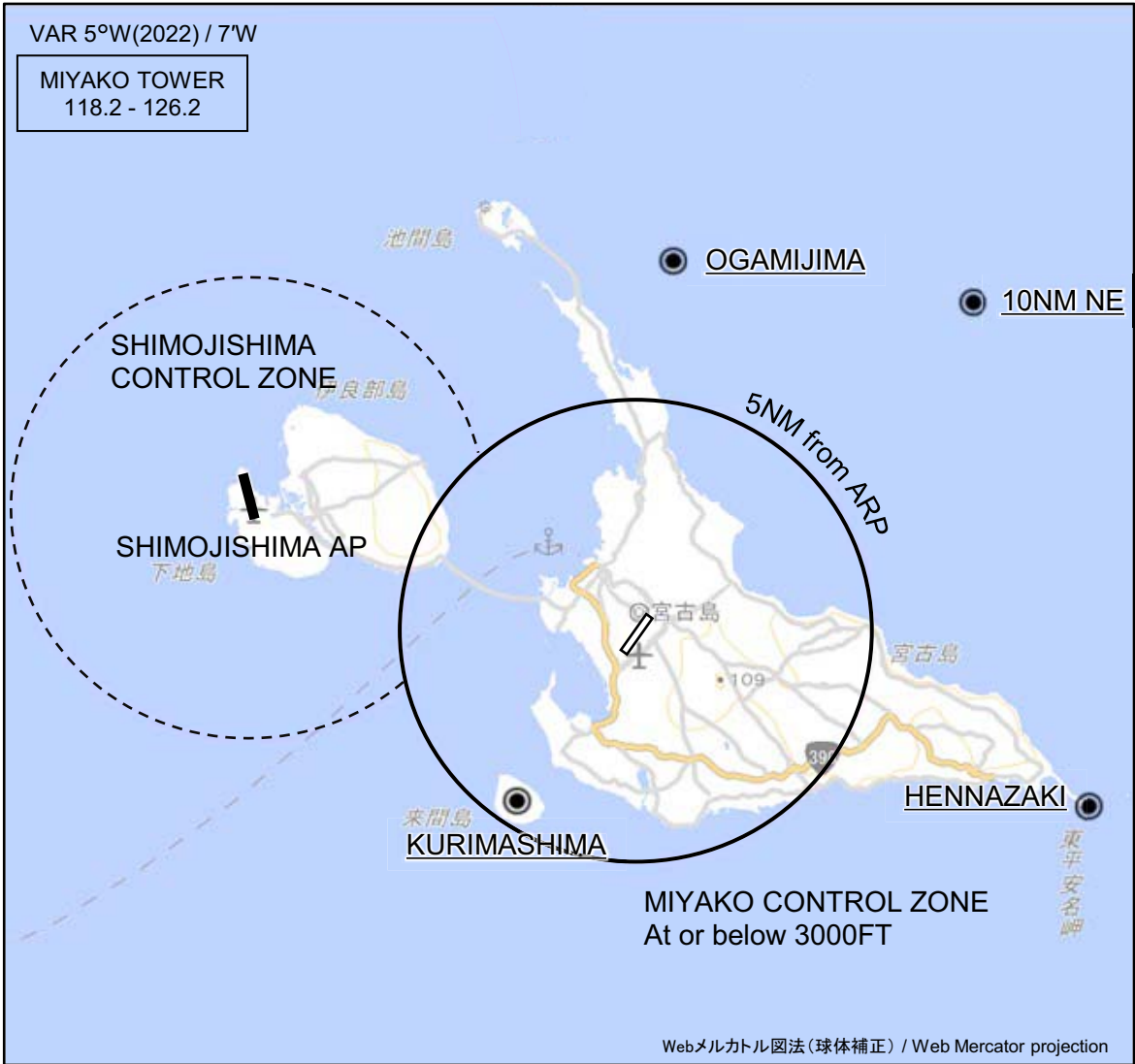
Waypoint Coordinates

| Waypoint Identifier | Coordinates | RF Arc Center Identifier | Coordinates |
|---------------------|--------------------------|--------------------------|--------------------------|
| ARGUY | 244652.87N / 1253554.53E | MYRF2 | 244340.95N / 1251818.44E |
| SHIBY | 244401.74N / 1252716.29E | | |
| MY462 | 244121.83N / 1251913.79E | | |
| INGYA | 244138.41N / 1251647.53E | | |
| MY461 | 244512.72N / 1251611.26E | | |
| RW04 | 244632.65N / 1251720.41E | | |
| UTIMA | 245048.13N / 1252101.67E | | |

CHANGE : PROC renamed.

ROMY / MIYAKO

Visual REP



CHANGE : Map updated. BRG/DIST from ARP.

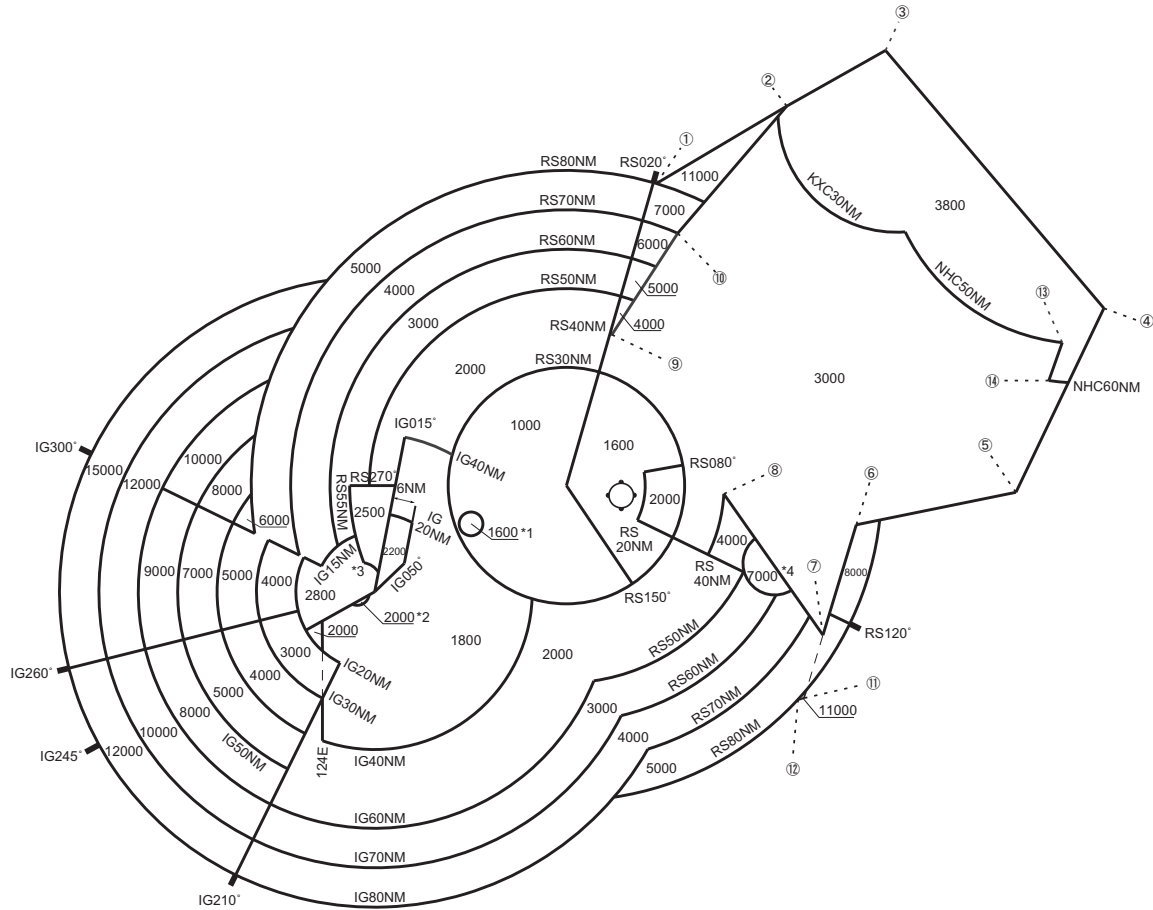
※図中に標高を示す数字がある場合、単位はメートル(m)である。The unit of measurement used to express elevation is meter(m).

| Call sign | BRG / DIST from ARP | Remarks |
|--------------------|---------------------|--------------------|
| 大神島 Ogamijima | 005°T / 8.0NM | 島 Island |
| 10NM NE | 045°T / 10.0NM | 海上 Over the sea |
| 来間島 Kurimashima | 215°T / 4.5NM | 島 Island |
| 平安名崎 Hennazaki | 112°T / 10.2NM | 灯台 Lighthouse |

ROMY / MIYAKO

Minimum Vectoring Altitude CHART

VAR 5°W (2022)



- ① 260606N/1253511E
- ② 262504N/1261226E
- ③ 263831N/1264046E
- ④ 253118N/1273951E
- ⑤ 244518N/1271337E
- ⑥ 243809N/1262857E
- ⑦ 241018N/1261859E
- ⑧ 244643N/1255220E
- ⑨ 252751N/1252151E
- ⑩ 255321N/1254054E
- ⑪ 235438N/1261324E
- ⑫ 235414N/1261156E
- ⑬ 252316N/1272802E
- ⑭ 251400N/1272404E

CENTER : 244938N/1250827E (RORS RADAR SITE)
 CENTER : 242310N/1241441E (ROIG RADAR SITE)

- *1 : 244015N/1244143E RADIUS : 3NM
- *2 : 242248N/1240952E RADIUS : 3NM
- *3 : 242538N/1241100E RADIUS : 5NM
- *4 : 242850N/1260600E RADIUS : 8NM

CHANGE : VAR.