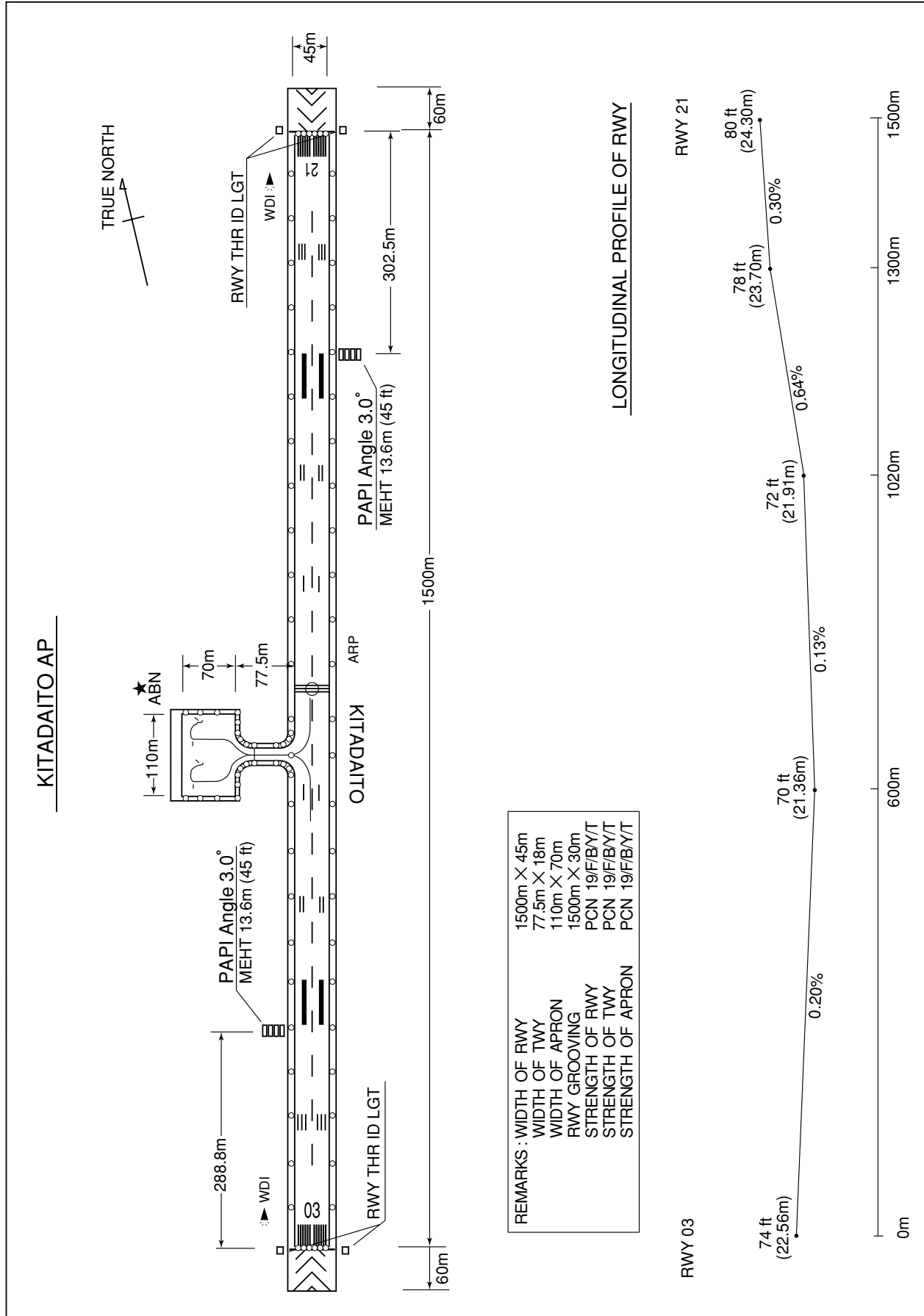


RORK / KITADAITO

AD CHART



STANDARD DEPARTURE CHART -INSTRUMENT

RORK / KITADAITO

SID

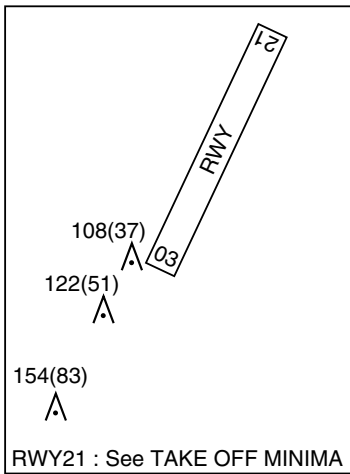
SOUTH SIX DEPARTURE

RWY03 : Climb RWY HDG to 500FT, turn right, direct to MDE VOR/DME.

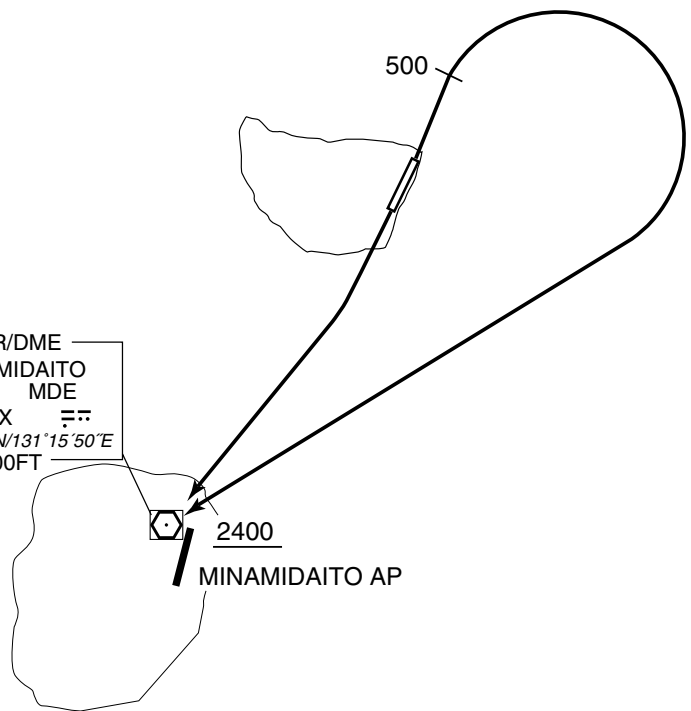
RWY21 : Climb to MDE VOR/DME.

Cross MDE VOR/DME at or above 2400FT.

SOUTH SIX DEPARTURE



VOR/DME
MINAMIDAITO
117.8 MDE
CH-125X
25°51'16"N/131°15'50"E
200FT



STANDARD DEPARTURE CHART -INSTRUMENT

RORK / KITADAITO

RNAV SID

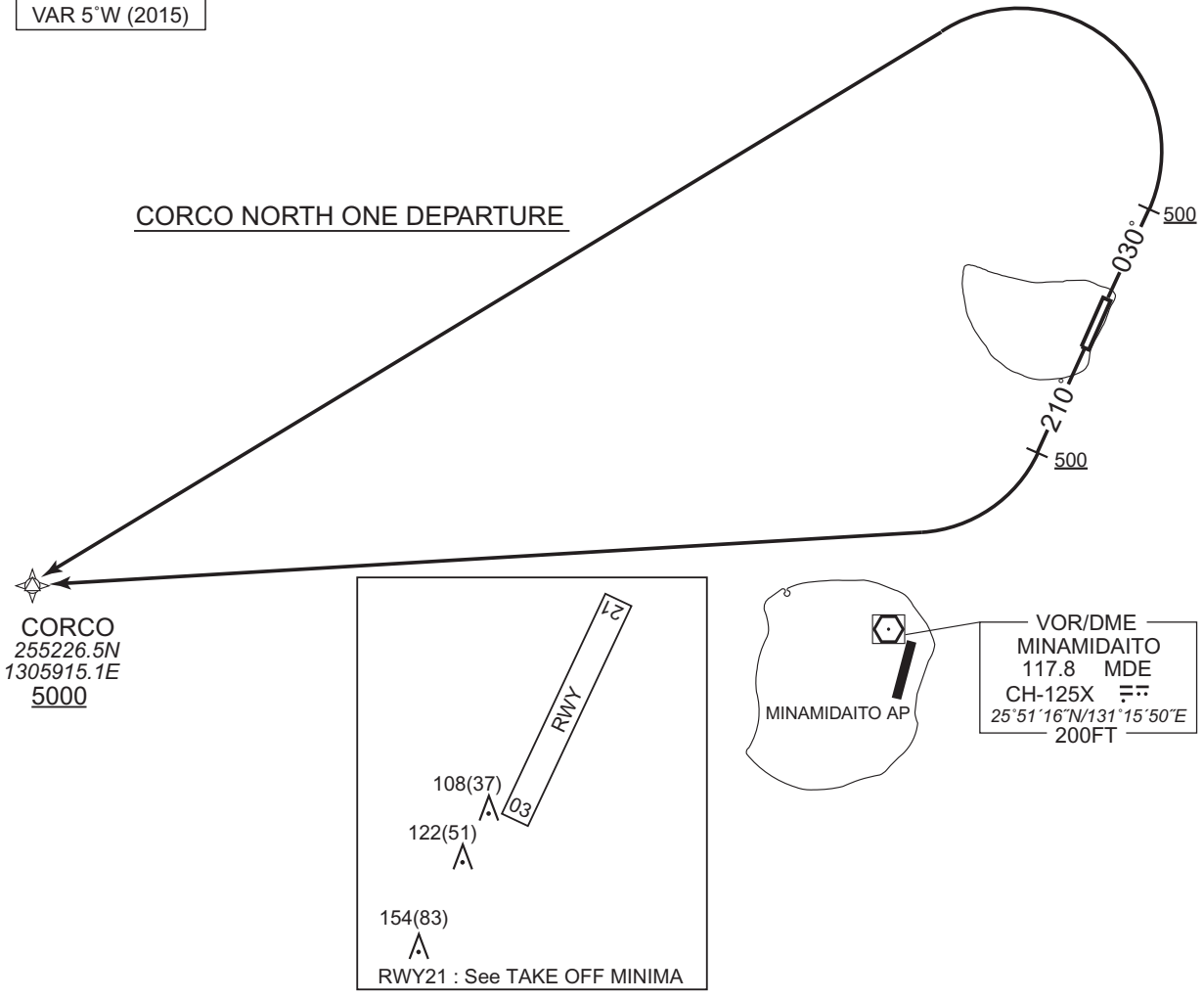
CORCO NORTH ONE DEPARTURE

RNP1

Note GNSS required.

VAR 5°W (2015)

CORCO NORTH ONE DEPARTURE



CORCO NORTH ONE DEPARTURE

RWY03 : Climb on HDG030° at or above 500FT, turn left direct to CORCO at or above 5000FT.
 RWY21 : Climb on HDG210° at or above 500FT, turn right direct to CORCO at or above 5000FT.

NOTE RWY03 : 4.0% climb gradient required up to 500FT due to airspace restrictions only.

RWY03

| Serial Number | Path Descriptor | Waypoint Identifier | Fly Over | Course °M(^T) | Magnetic Variation | Distance (NM) | Turn Direction | Altitude (FT) | Speed (KIAS) | Vertical Angle | Navigation Specification |
|---------------|-----------------|---------------------|----------|---------------|--------------------|---------------|----------------|---------------|--------------|----------------|--------------------------|
| 001 | VA | - | - | 030 (025.4) | -4.9 | - | - | +500 | - | - | RNP1 |
| 002 | DF | CORCO | - | - | -4.9 | - | L | +5000 | - | - | RNP1 |

RWY21

| Serial Number | Path Descriptor | Waypoint Identifier | Fly Over | Course °M(^T) | Magnetic Variation | Distance (NM) | Turn Direction | Altitude (FT) | Speed (KIAS) | Vertical Angle | Navigation Specification |
|---------------|-----------------|---------------------|----------|---------------|--------------------|---------------|----------------|---------------|--------------|----------------|--------------------------|
| 001 | VA | - | - | 210 (205.4) | -4.9 | - | - | +500 | - | - | RNP1 |
| 002 | DF | CORCO | - | - | -4.9 | - | R | +5000 | - | - | RNP1 |

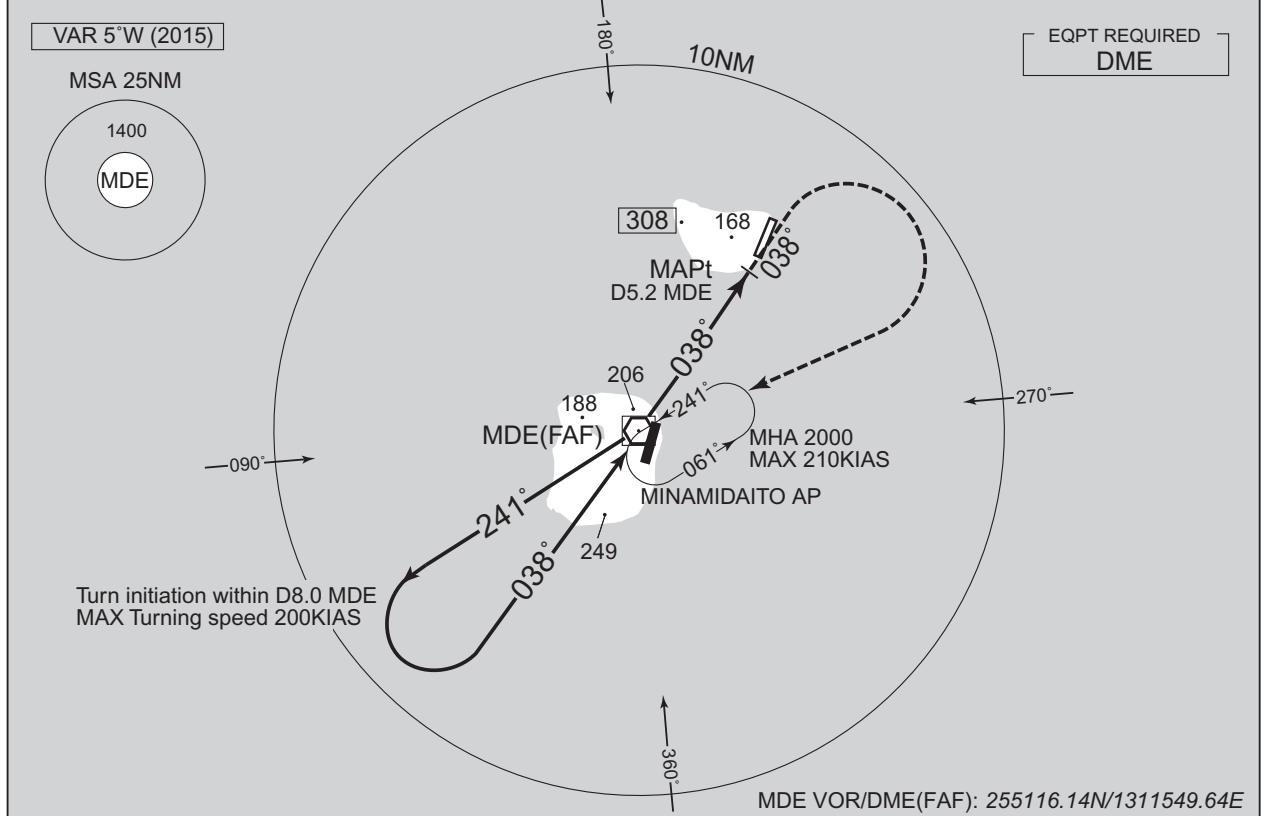
CHANGE : Navigation Specification(Basic RNP1 → RNP1).

INSTRUMENT APPROACH CHART

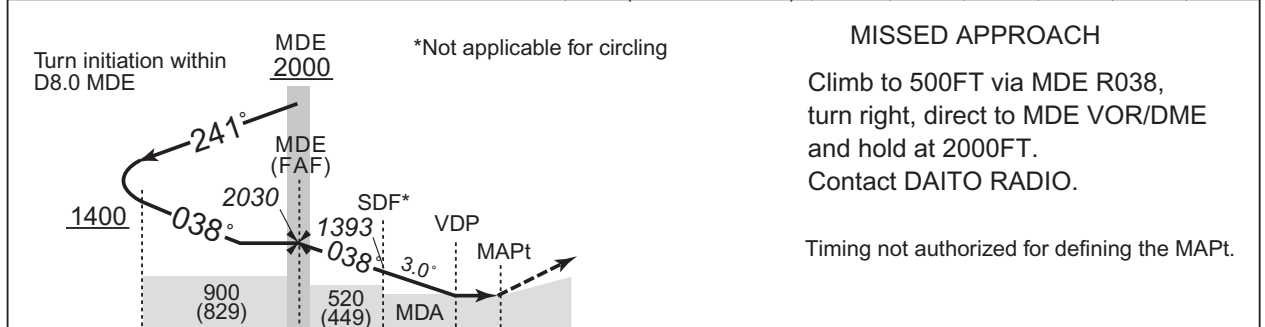
RORK / KITADAITO

VOR Z RWY03

| | | | |
|----------------------------------|---|--|----------|
| FUKUOKA CONTROL 124.5 - 279.5 | MINAMIDAITO VOR/DME 117.8 MDE CH-125X 25°51'16"N/131°15'50"E | DAITO RADIO 118.55 AFIS provided by Naha Airport Office | NO RADAR |
|----------------------------------|---|--|----------|



| NM from MDE | FAF | 1 | 2 | 3 | 4 | MAPt |
|-------------|------|------|------|------|-----|------|
| 2030 | 2030 | 1711 | 1393 | 1075 | 756 | - |



| | | | | | |
|-----|-----|-----|-----|-----|--------------|
| 0 | 2.0 | 4.8 | 5.2 | 6.0 | DME from MDE |
| 6.0 | 4.0 | 1.2 | 0.8 | 0 | NM to THR |

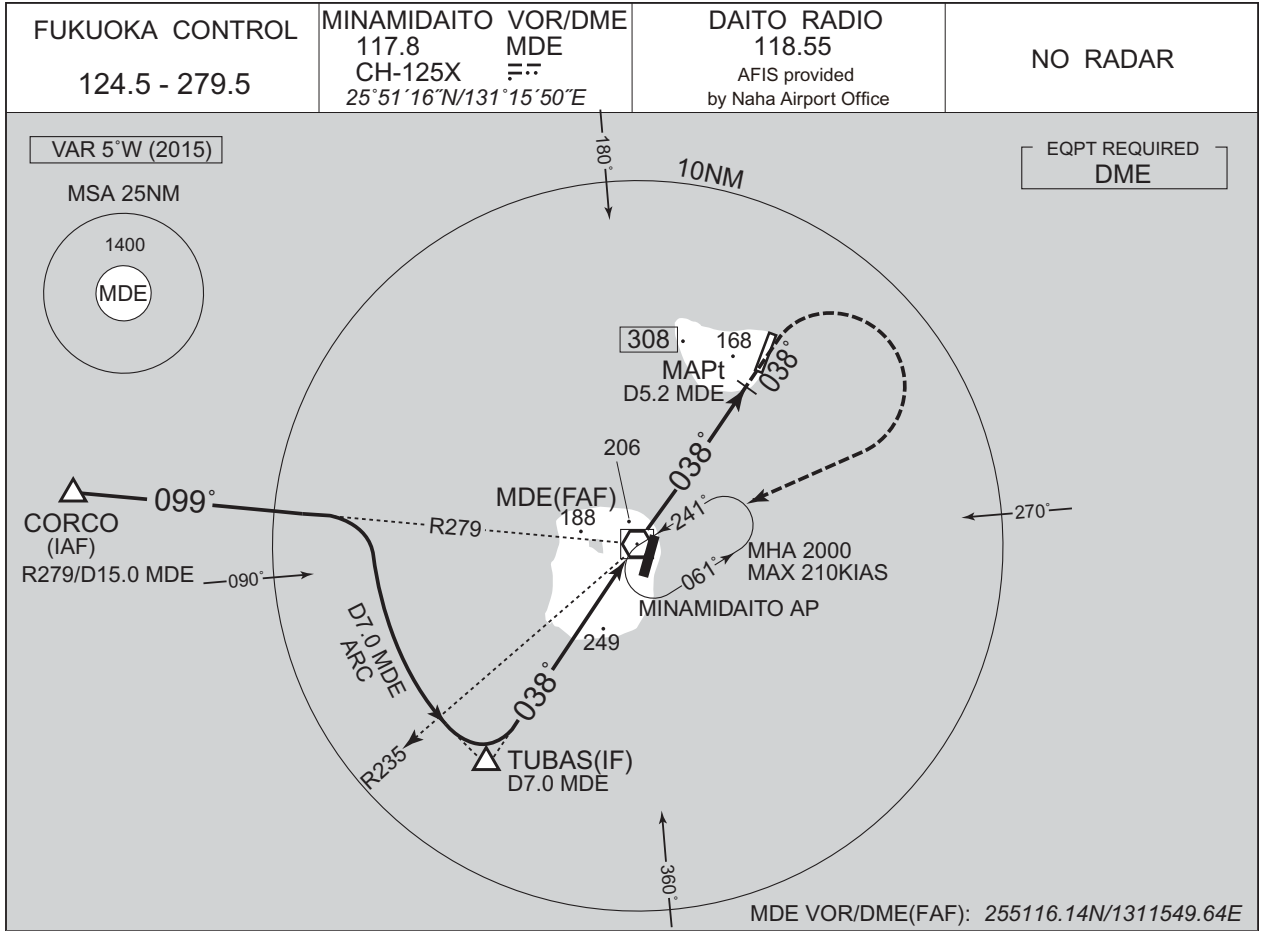
| CAT | MINIMA | | THR elev. 74 | | AD elev. 71 | |
|-----|-----------|------|--------------|------|-------------|--|
| | MDA(H) | CMV | MDA(H) | VIS | CIRCLING | |
| A | 480 (409) | 1500 | 560 (489) | 1600 | | |
| B | 480 (409) | 1500 | 560 (489) | 1600 | | |
| C | 490 (419) | 1800 | 630 (559) | 2400 | | |
| D | - | - | - | - | | |

CHANGE : ATC call sign.

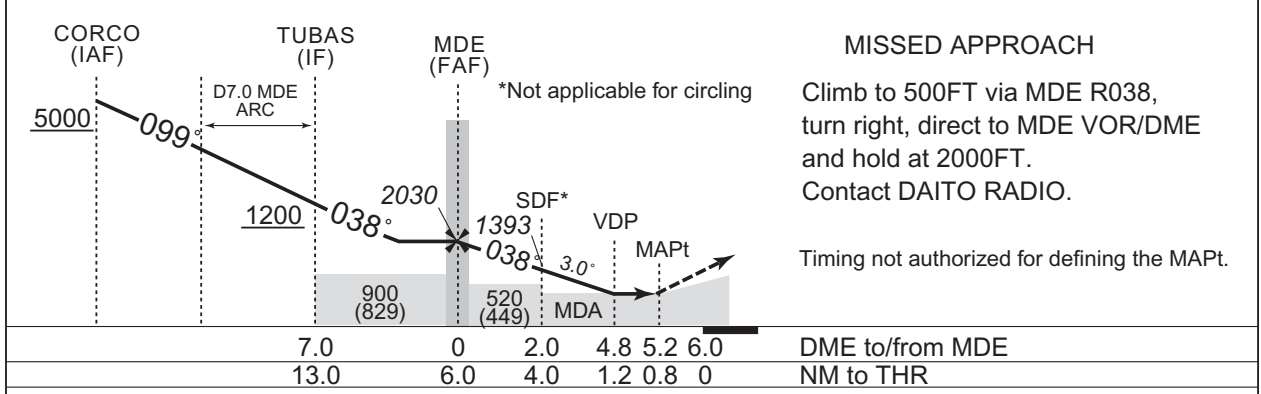
INSTRUMENT APPROACH CHART

RORK / KITADAITO

VOR Y RWY03



| | | | | | | |
|----------------------|------|------|------|------|-----|------|
| NM from MDE | FAF | 1 | 2 | 3 | 4 | MAPt |
| ALT (3.0° APCH Path) | 2030 | 1711 | 1393 | 1075 | 756 | - |



MISSED APPROACH
Climb to 500FT via MDE R038, turn right, direct to MDE VOR/DME and hold at 2000FT. Contact DAITO RADIO.
Timing not authorized for defining the MAPt.

| | | | | | | |
|------|-----|-----|-----|-----|-----|-----------------|
| 7.0 | 0 | 2.0 | 4.8 | 5.2 | 6.0 | DME to/from MDE |
| 13.0 | 6.0 | 4.0 | 1.2 | 0.8 | 0 | NM to THR |

| | | | | |
|--------|-----------|--------------|-------------|------|
| MINIMA | | THR elev. 74 | AD elev. 71 | |
| CAT | CIRCLING | | MDA(H) | VIS |
| | MDA(H) | CMV | | |
| A | 480 (409) | 1500 | 560 (489) | 1600 |
| B | 490 (419) | 1800 | 630 (559) | 2400 |
| C | - | - | - | - |
| D | - | - | - | - |

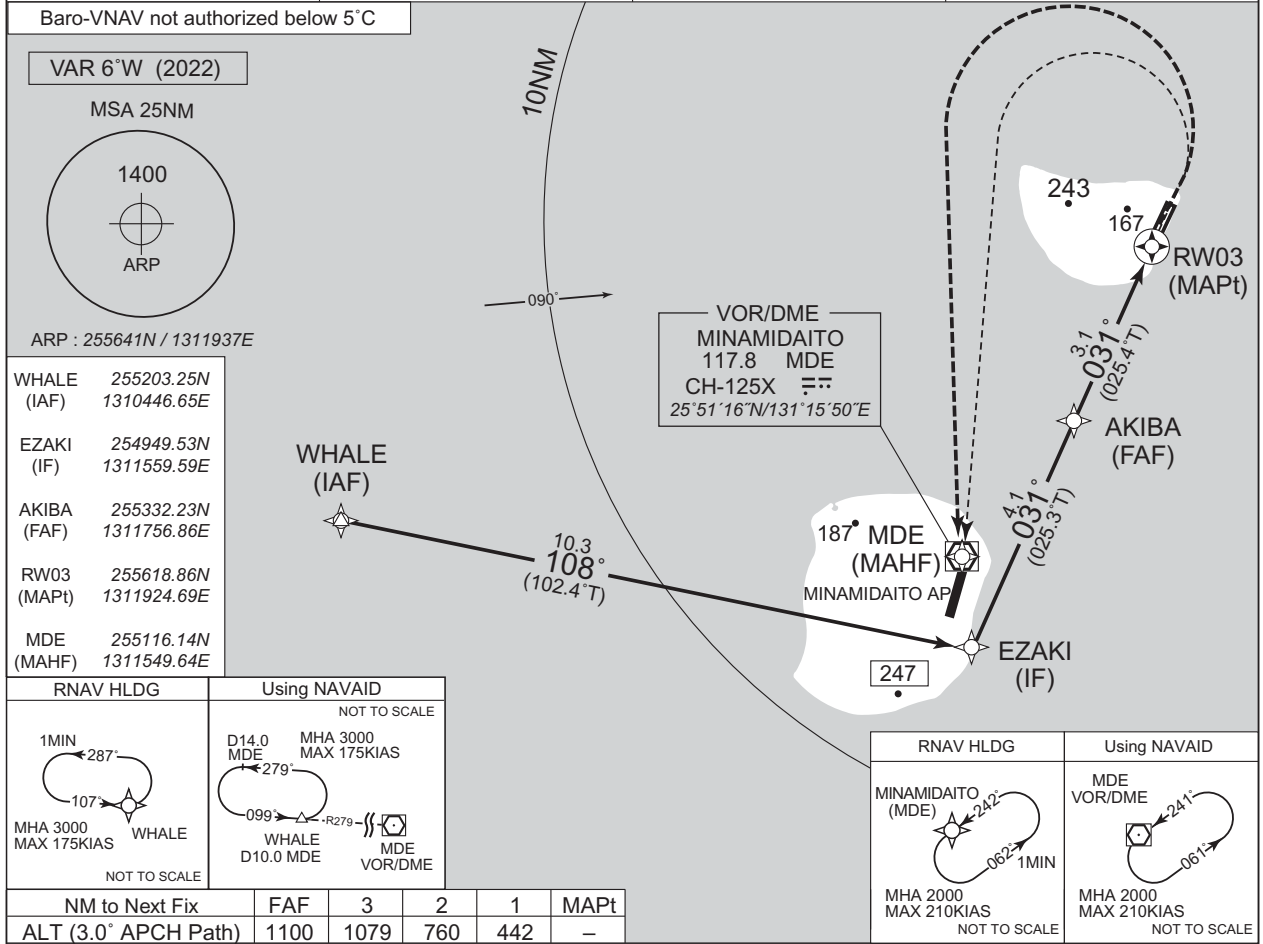
CHANGE : ATC call sign.

INSTRUMENT APPROACH CHART

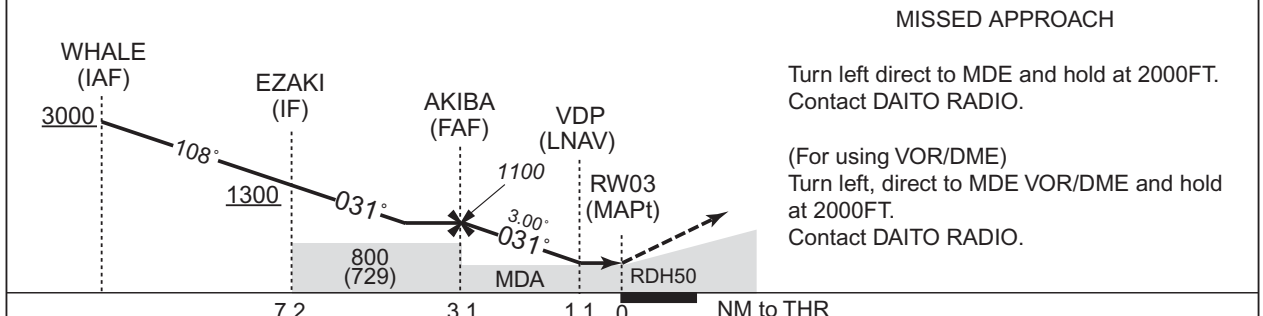
RORK / KITADAITO

RNP RWY03

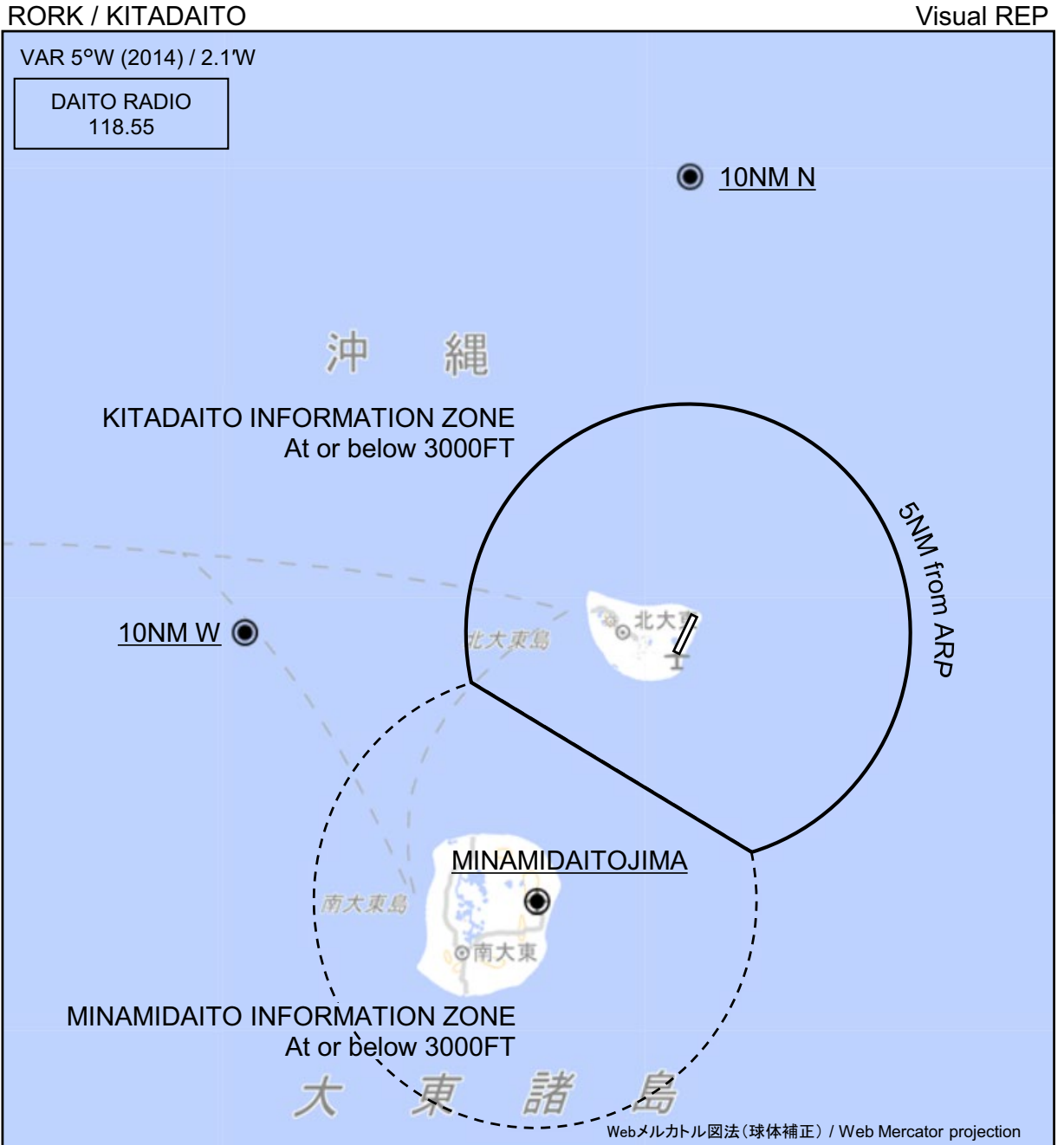
| | | | |
|----------------------------------|----------|--|----------|
| FUKUOKA CONTROL 124.5 - 279.5 | RNP APCH | DAITO RADIO 118.55 AFIS provided by Naha Airport Office | NO RADAR |
|----------------------------------|----------|--|----------|



CHANGE:PROC renamed. Requirement for RNP:



| MINIMA | | THR elev. 74 | | AD elev. 71 | | |
|--------|-----------|--------------|-----------|-------------|-----------|------|
| CAT | LNAV/VNAV | | LNAV | | CIRCLING | |
| | DA(H) | CMV | MDA(H) | CMV | MDA (H) | VIS |
| A | 440 (366) | 1500 | 440 (369) | 1500 | 560 (489) | 1600 |
| B | | 1800 | | 1800 | 630 (559) | 2400 |
| C | - | - | - | - | - | - |
| D | - | - | - | - | - | - |



※図中に標高を示す数字がある場合、単位はメートル(m)である。The unit of measurement used to express elevation is meter(m).

| Call sign | BRG / DIST from ARP | Remarks |
|-------------------------|---------------------|------------------------------|
| 10NM N | 360°T / 10.0NM | 海上 Over the sea |
| 10NM W | 270°T / 10.0NM | 海上 Over the sea |
| 南大東島 Minamidaitojima | 210°T / 6.8NM | 南大東空港 Minamidaito Airport |

RORK / KITADAITO

Minimum Vectoring Altitude CHART

CHANGE : Shape of segment. Minimum vectoring altitude.

