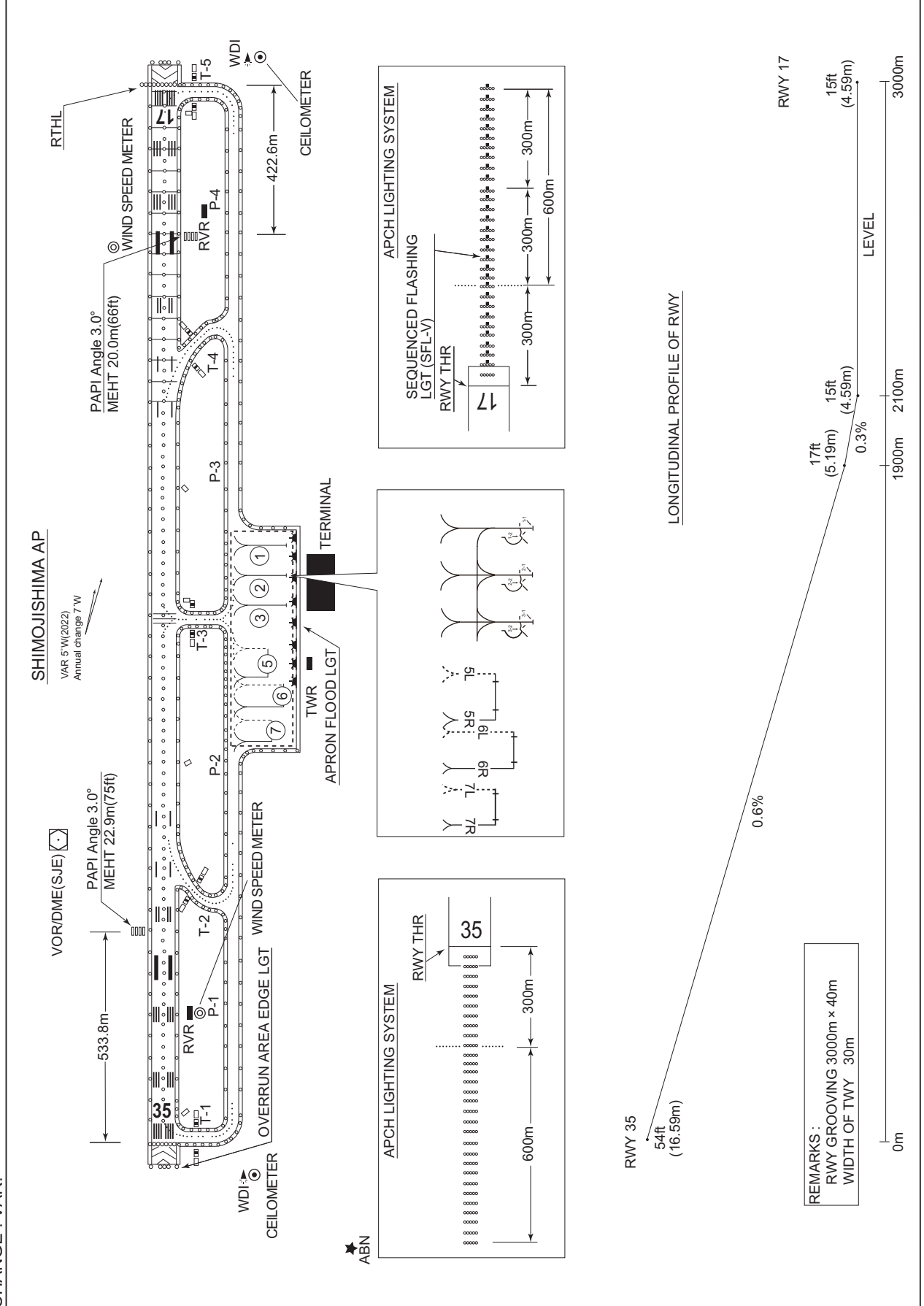


RORS / SHIMOJISHIMA

AD CHART

CHANGE : VAR.



STANDARD DEPARTURE CHART - INSTRUMENT

RORS / SHIMOJISHIMA

SID

ANNIE FIVE DEPARTURE

RWY17 : Climb RWY HDG to 500FT, turn right HDG036° to intercept and proceed ...

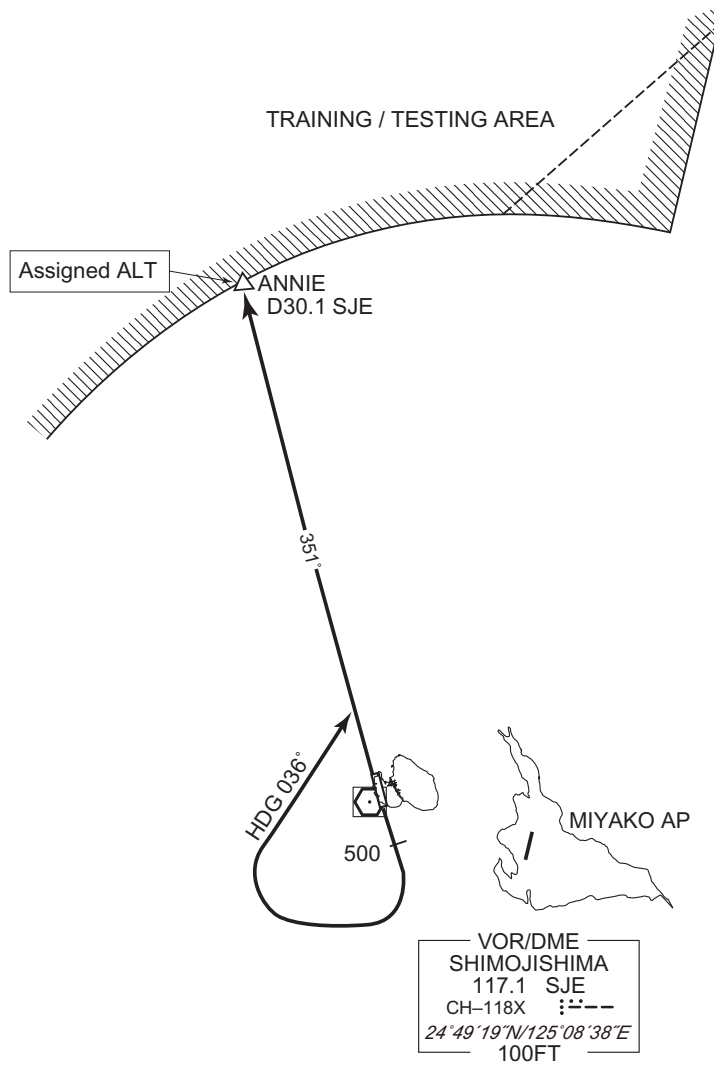
RWY35 : Climb ...

... via SJE R351 to ANNIE.

Cross ANNIE at assigned altitude.

Note RWY17 : 5.0% climb gradient required up to 500FT.

OBST ALT 93FT located at 0.2NM 161° FM end of RWY17.



CHANGE : Description of PROC name.

STANDARD DEPARTURE CHART - INSTRUMENT

RORS / SHIMOJISHIMA

SID

BETTY FIVE DEPARTURE

RWY17 : Climb RWY HDG to 500FT ...

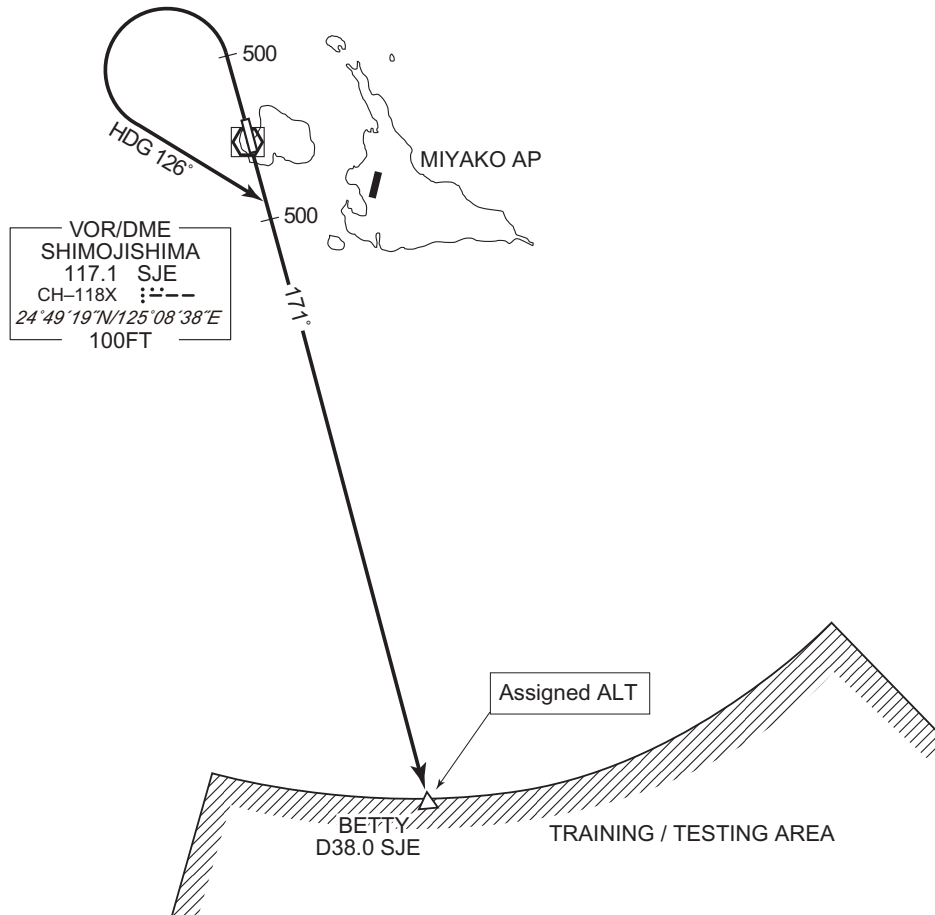
RWY35 : Climb RWY HDG to 500FT, turn left HDG 126° to intercept and proceed ...

... via SJE R171 to BETTY.

Cross BETTY at assigned altitude.

Note RWY17 : 5.0% climb gradient required up to 500FT.

OBST ALT 93FT located at 0.2NM 161° FM end of RWY17.



CHANGE : Description of PROC name.

STANDARD DEPARTURE CHART - INSTRUMENT

RORS / SHIMOJISHIMA

SID

MIYAKOJIMA FOUR DEPARTURE

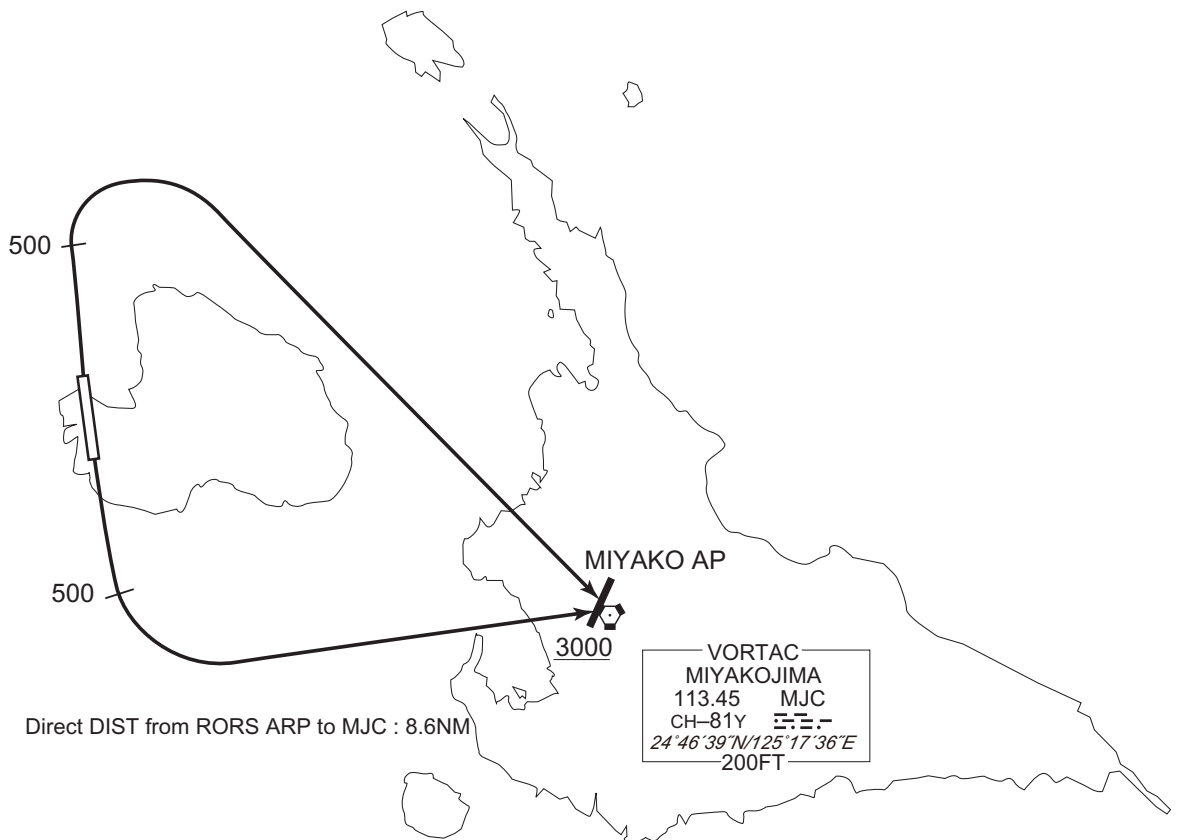
RWY17 : Climb RWY HDG to 500FT, turn left,...

RWY35 : Climb RWY HDG to 500FT, turn right,...

...direct to MJC VORTAC. Cross MJC VORTAC at or above 3000FT.

Note RWY17 : 5.0% climb gradient required up to 500FT.

OBST ALT 93FT located at 0.2NM 161° FM end of RWY17.



CHANGE : Description of PROC name.

STANDARD DEPARTURE CHART - INSTRUMENT

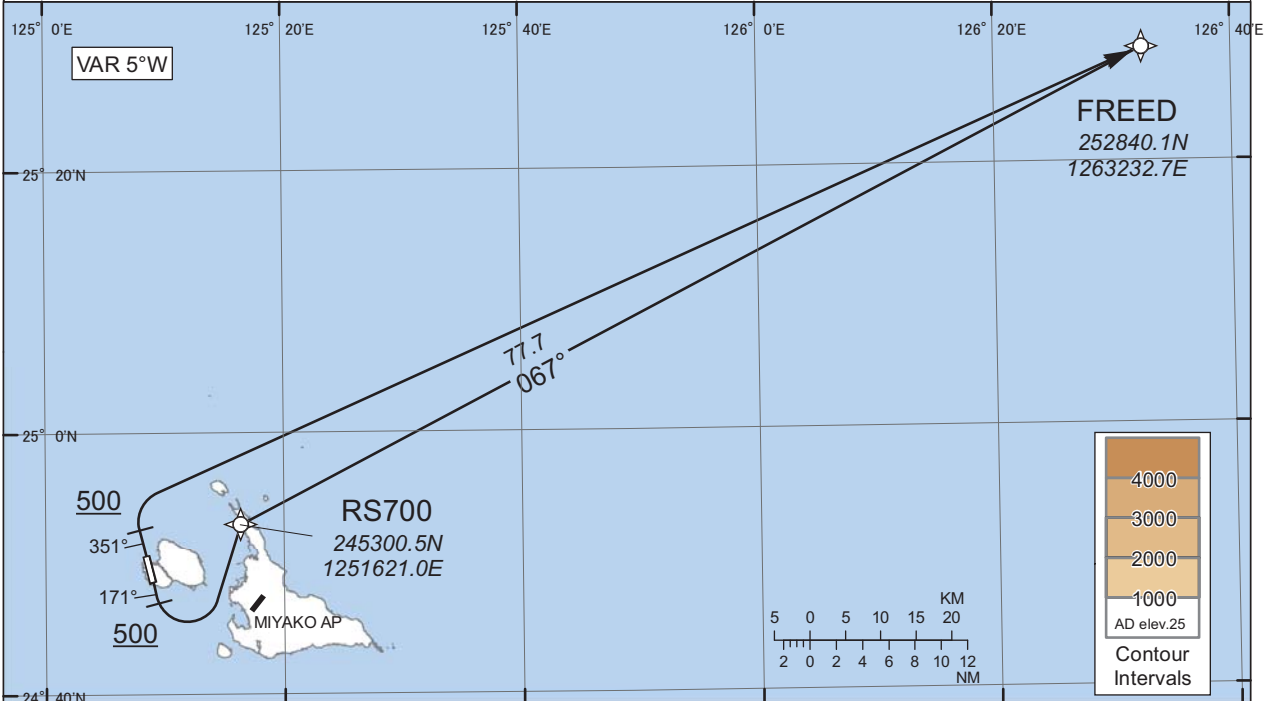
RORS / SHIMOJISHIMA

RNAV SID

FREED TWO DEPARTURE

RNP1

Note GNSS required.



RWY17 : Climb on HDG171° at or above 500FT, turn left direct to RS700, to FREED.  
RWY35 : Climb on HDG351° at or above 500FT, turn right direct to FREED.

Note RWY17 : 5.0% climb gradient required up to 500FT.  
OBST ALT 93FT located at 0.2NM 161° FM end of RWY17.

RWY17

Serial Number	Path Descriptor	Waypoint Identifier	Fly Over	Course °M(°T)	Magnetic Variation	Distance (NM)	Turn Direction	Altitude (FT)	Speed (KIAS)	Vertical Angle	Navigation Specification
001	VA	-	-	171 (166.1)	-5.1	-	-	+500	-	-	RNP1
002	DF	RS700	-	-	-5.1	-	L	-	-	-	RNP1
003	TF	FREED	-	067 (062.4)	-5.1	77.7	-	-	-	-	RNP1

RWY35

Serial Number	Path Descriptor	Waypoint Identifier	Fly Over	Course °M(°T)	Magnetic Variation	Distance (NM)	Turn Direction	Altitude (FT)	Speed (KIAS)	Vertical Angle	Navigation Specification
001	VA	-	-	351 (346.1)	-5.1	-	-	+500	-	-	RNP1
002	DF	FREED	-	-	-5.1	-	R	-	-	-	RNP1

CHANGE : Description of PROC name and VAR.

STANDARD ARRIVAL CHART - INSTRUMENT

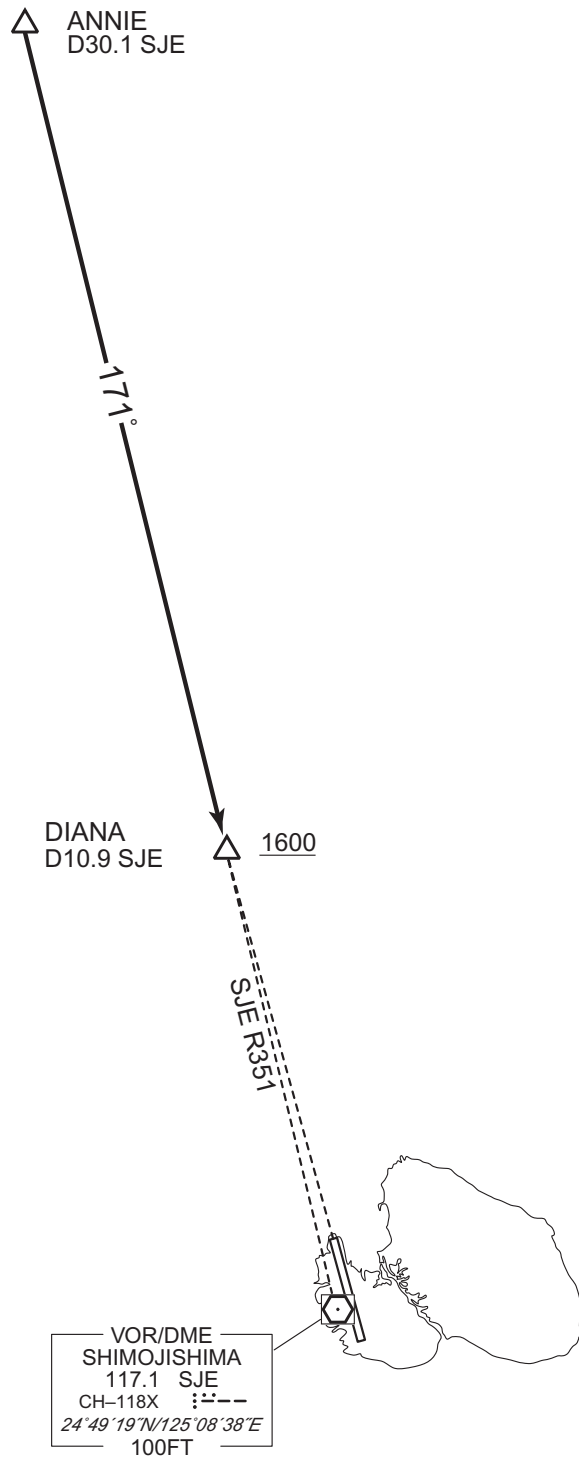
RORS / SHIMOJISHIMA

STAR

ANNIE ARRIVAL

From over ANNIE, proceed via SJE R351 to DIANA.  
Cross DIANA at or above 1600FT.

CHANGE : Description of PROC name.



STANDARD ARRIVAL CHART - INSTRUMENT

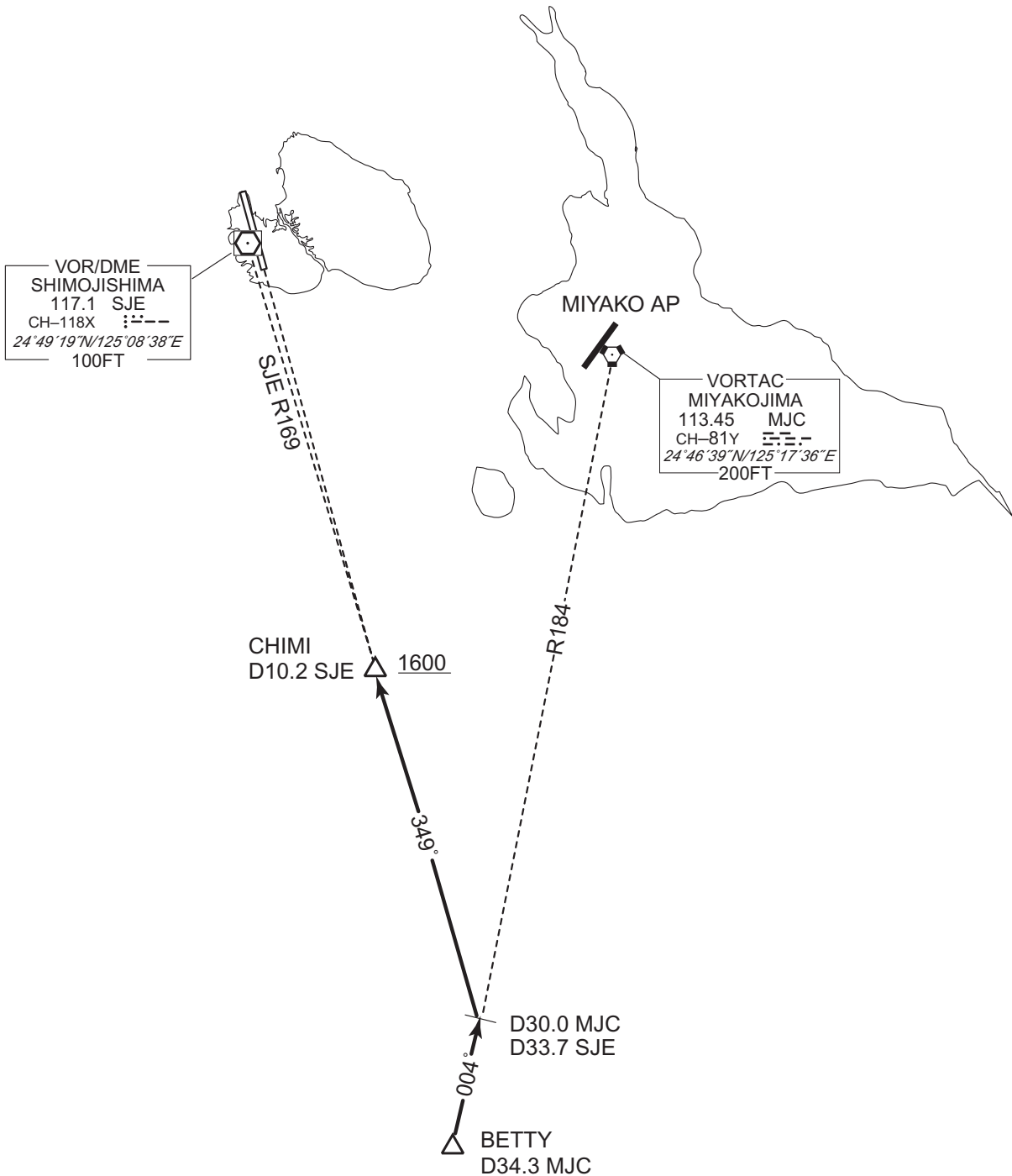
RORS / SHIMOJISHIMA

STAR

BETTY ARRIVAL

From over BETTY, proceed via MJC R184 to intercept and proceed via SJE R169 to CHIMI.

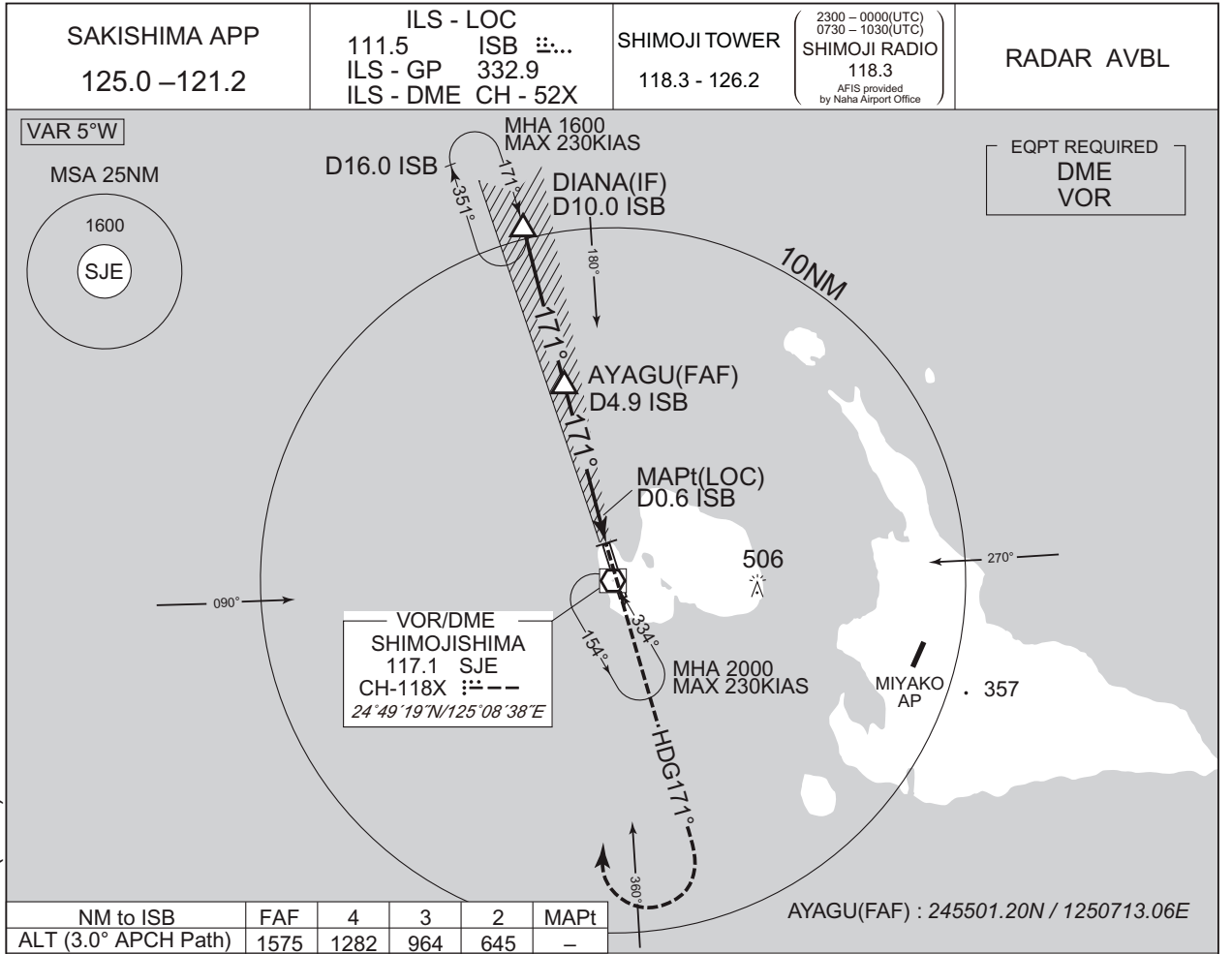
Cross CHIMI at or above 1600FT.



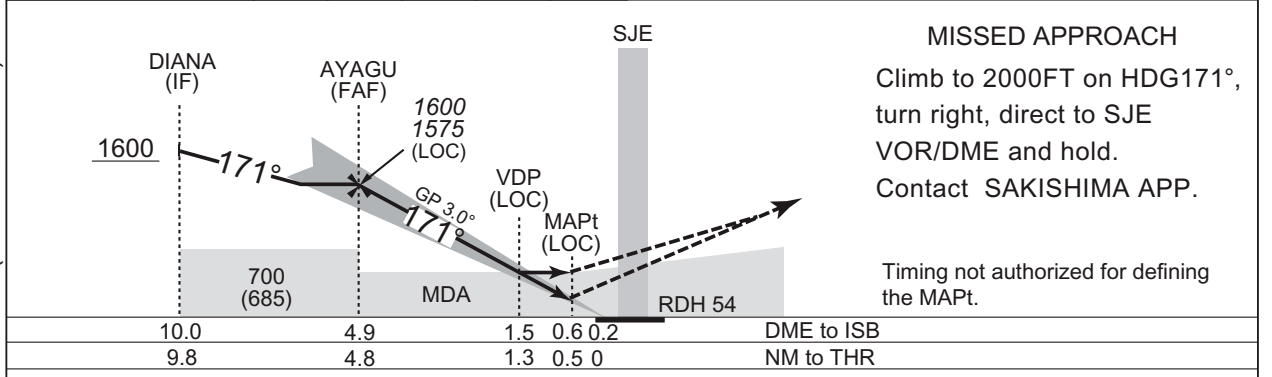
CHANGE : Description of PROC name.

INSTRUMENT APPROACH CHART

RORS / SHIMOJISHIMA ILS Z or LOC Z RWY17



CHANGE : PROC course. HLDG pattern. ALT(3.0° APCH Path). PROC ALT(LOC) at AYAGU. Missed APCH course. DME to ISB.



Missed APCH climb gradient MNM 3.0%

MINIMA		THR elev. 15		AD elev. 25		
CAT	CAT I		LOC		CIRCLING	
	DA(H)	RVR/CMV	MDA(H)	RVR/CMV	MDA(H)	VIS
A	240 (225)	600	460 (445)	900	510 (485)	1600
B				1000		
C				1400		
D				1400		

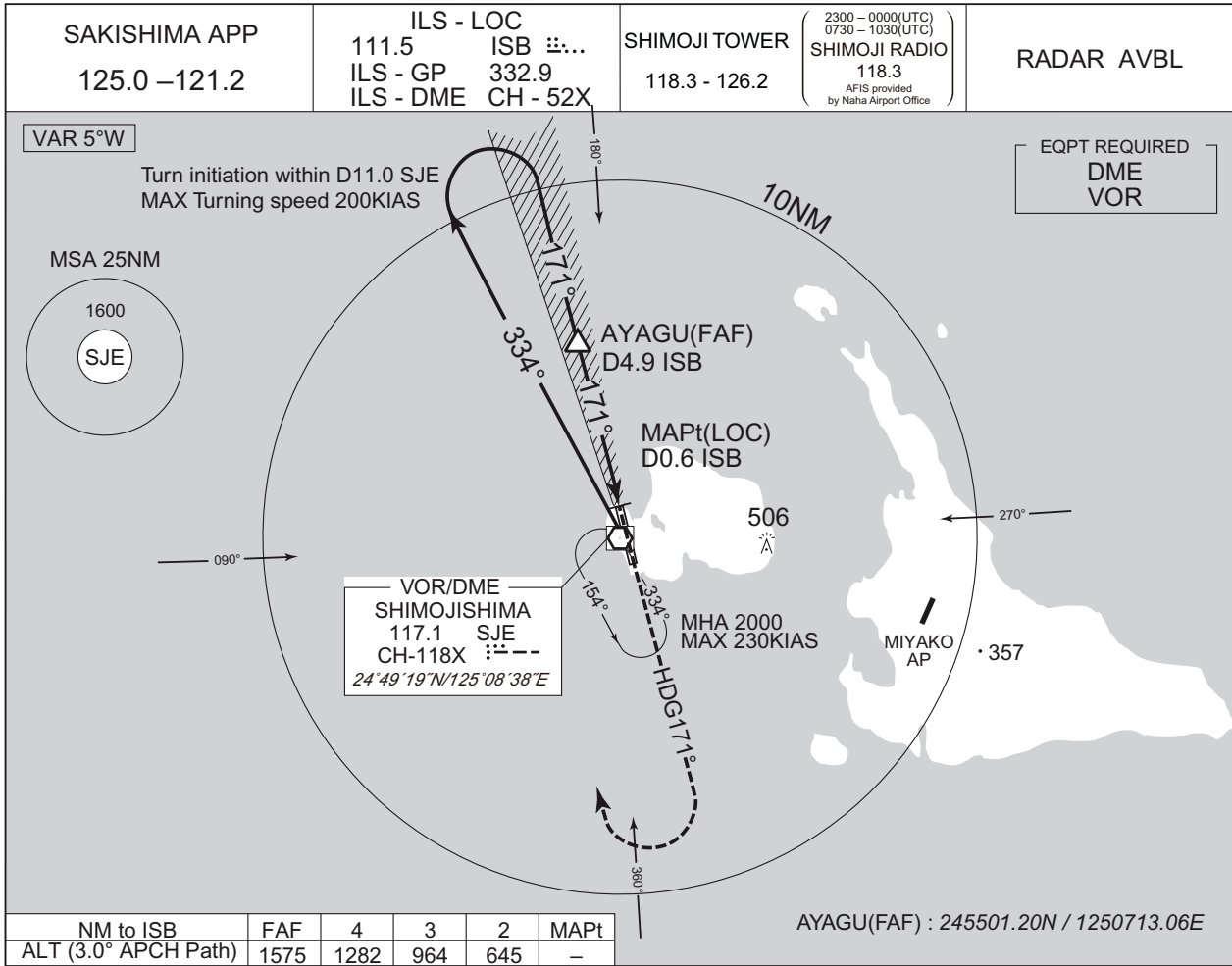
MINIMA with Missed APCH climb gradient of 2.5% are not established.  
Circling to WEST side of RWY only.



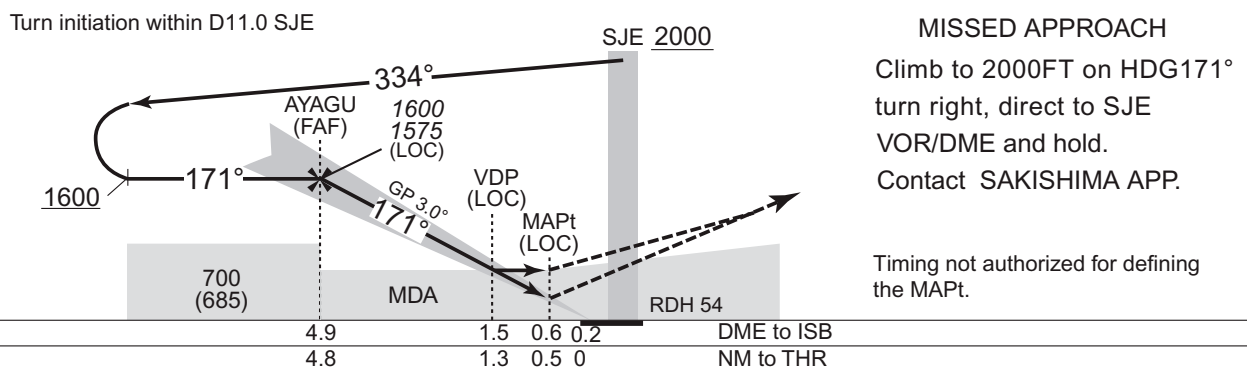
INSTRUMENT APPROACH CHART

RORS / SHIMOJISHIMA

ILS Y or LOC Y RWY17



CHANGE : PROC course. ALT(3.0° APCH Path). PROC ALT(LOC) at AYAGU. DME to ISB.



Missed APCH climb gradient MNM 3.0%

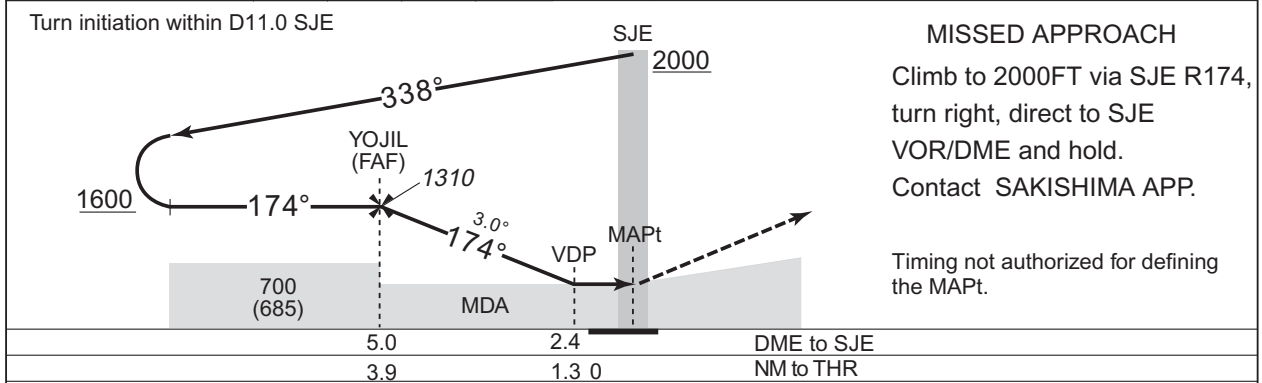
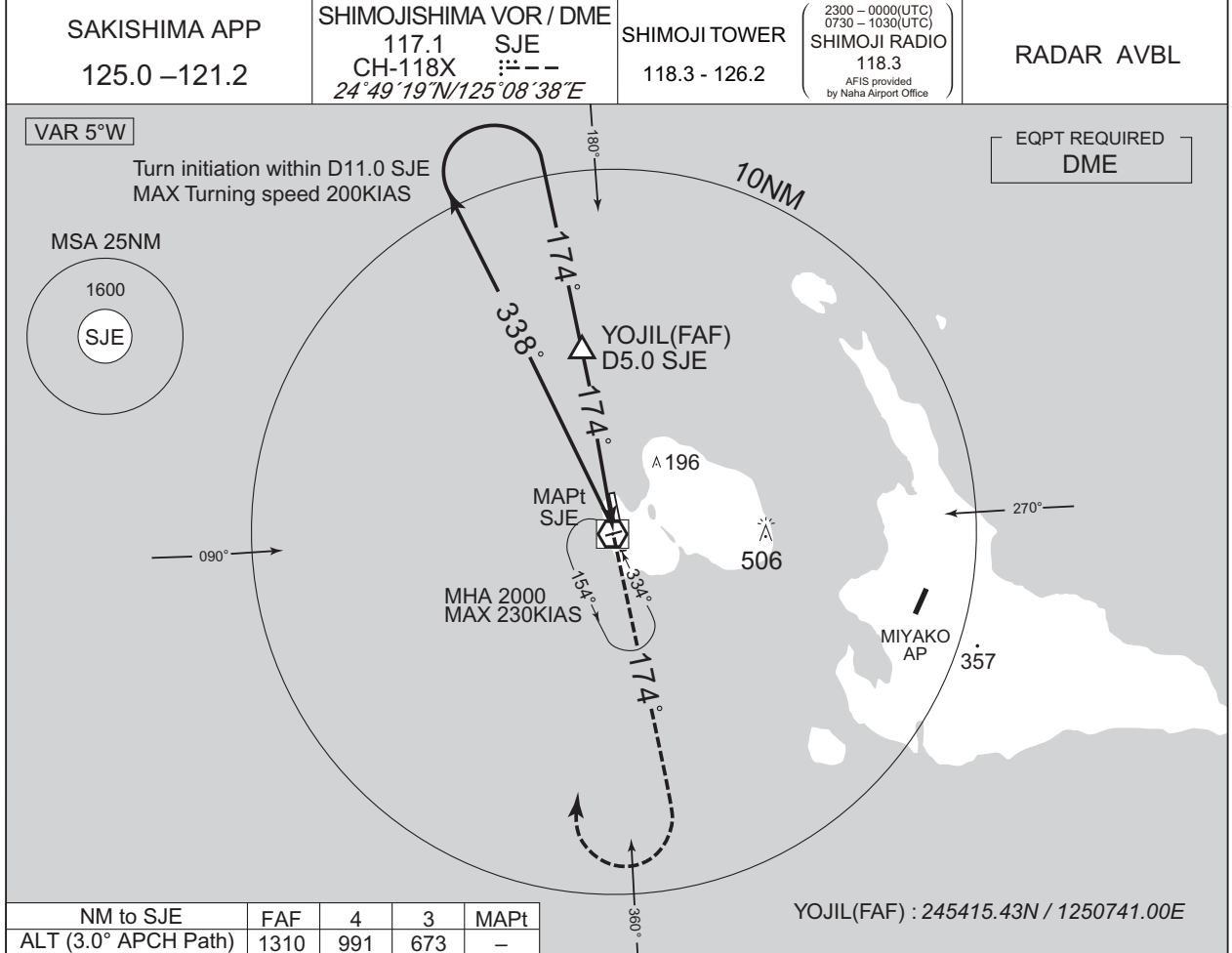
MINIMA		THR elev. 15	AD elev. 25			
CAT	CAT I		LOC		CIRCLING	
	DA(H)	RVR/CMV	MDA(H)	RVR/CMV	MDA(H)	VIS
A	240 (225)	600	460 (445)	900	510 (485)	1600
B				1000		
C				1400		2400
D				1400		580 (555)

MINIMA with Missed APCH climb gradient of 2.5% are not established.  
Circling to WEST side of RWY only.

INSTRUMENT APPROACH CHART

RORS / SHIMOJISHIMA

VOR RWY17



MINIMA		THR elev. 15	AD elev. 25		
CHANGE : VAR.	CAT	CIRCLING			
		MDA(H)	RVR/CMV	MDA(H)	VIS
	A	460 (445)	900	510 (485)	1600
	B	C	1000	580 (555)	2400
D		1400		3200	

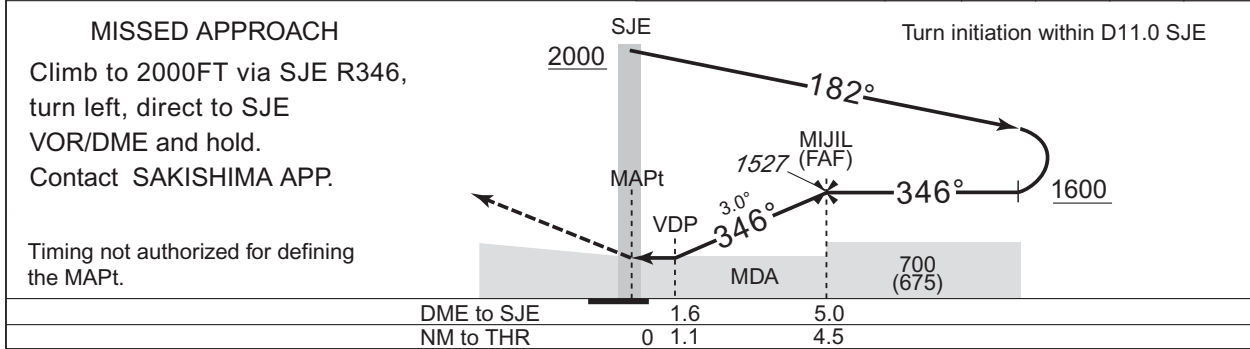
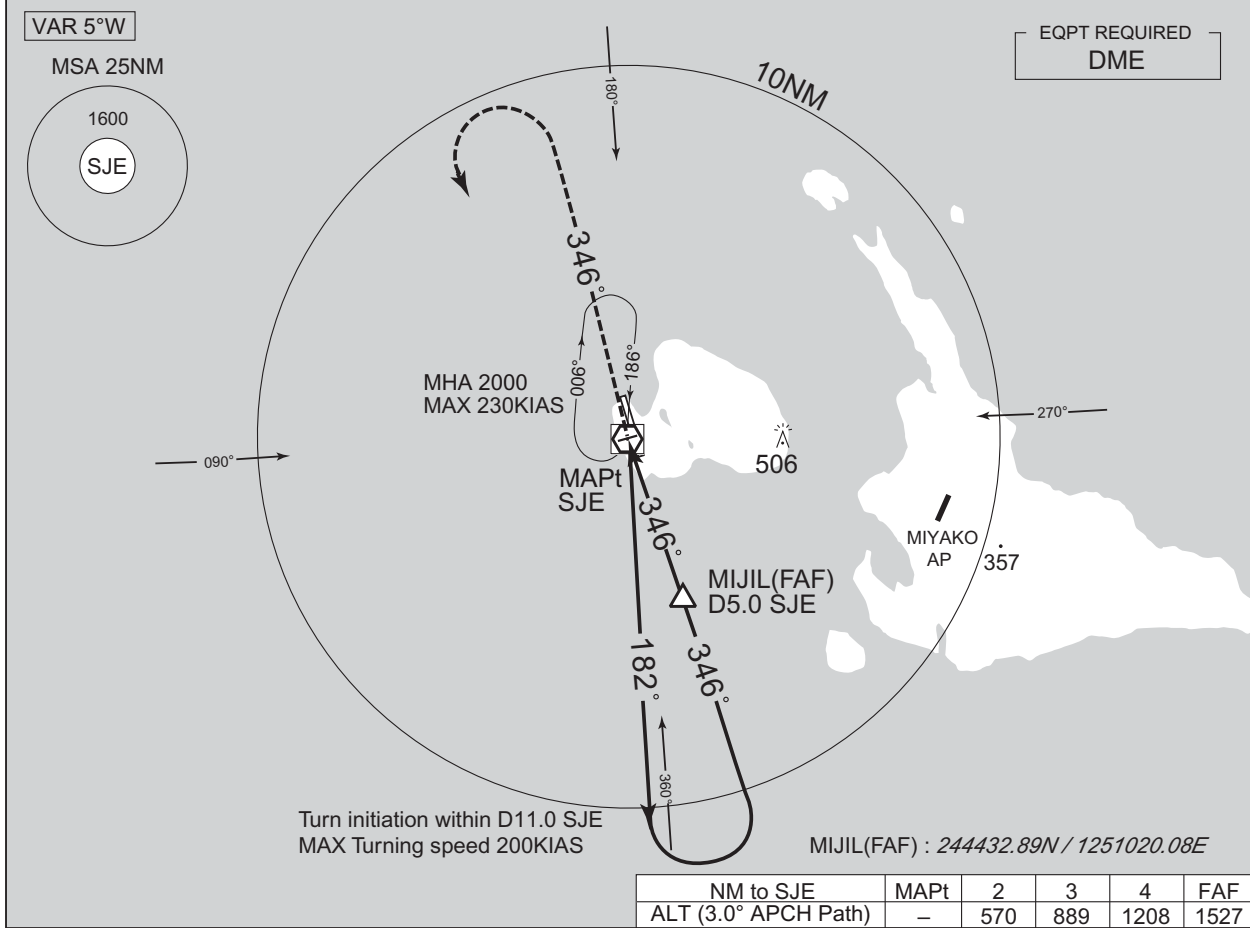
Circling to WEST side of RWY only.

INSTRUMENT APPROACH CHART

RORS / SHIMOJISHIMA

VOR RWY35

SAKISHIMA APP 125.0 - 121.2	SHIMOJISHIMA VOR / DME 117.1 SJE CH - 118X 24°49'19"N/125°08'38"E	SHIMOJI TOWER 118.3 - 126.2	2300 - 0000(UTC) 0730 - 1030(UTC) SHIMOJI RADIO 118.3 AFIS provided by Naha Airport Office	RADAR AVBL
--------------------------------	--	--------------------------------	---	------------



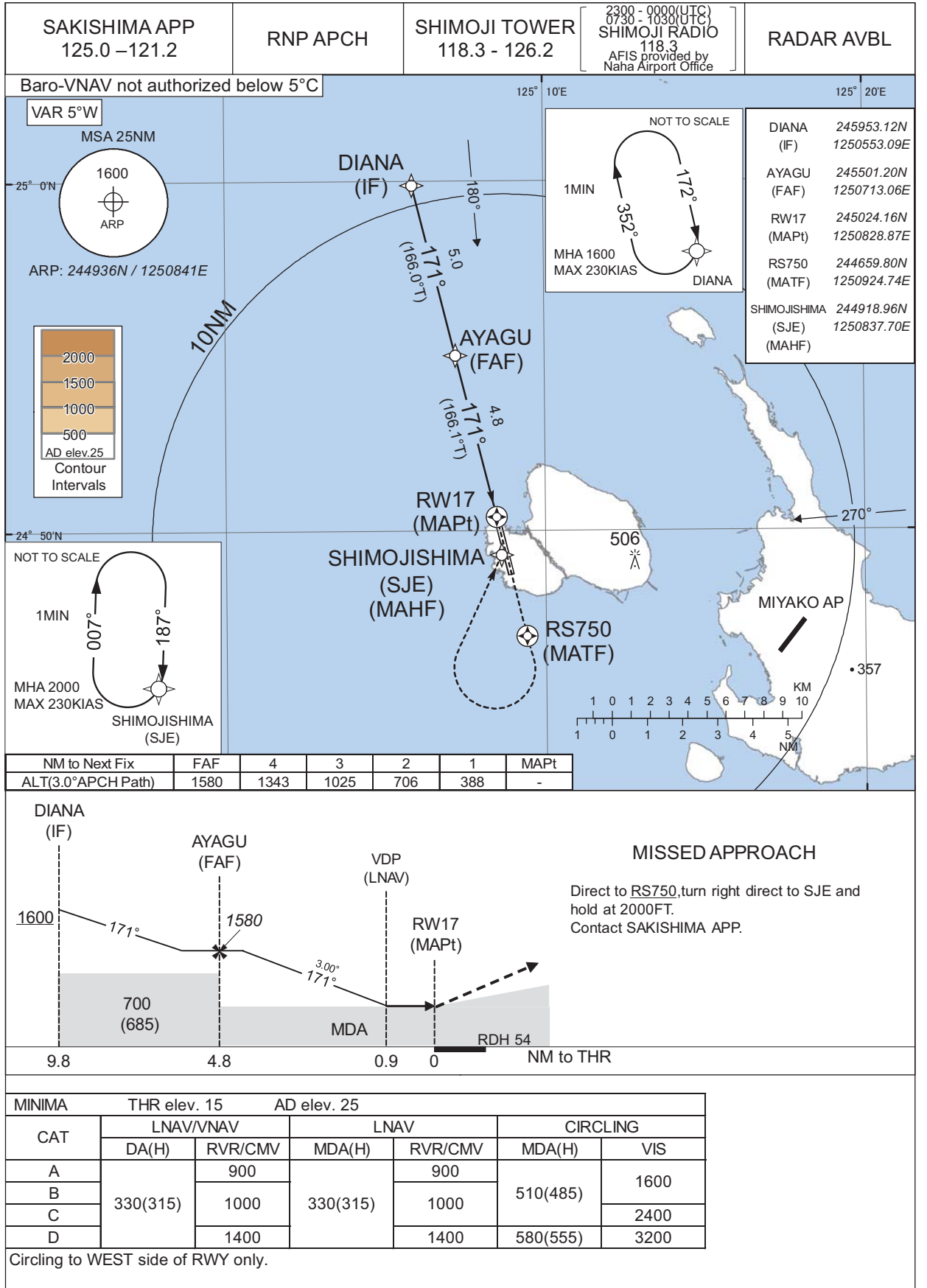
<b>MINIMA</b>		THR elev. 54	AD elev. 25	
CAT	CIRCLING			
	MDA(H)	RVR/CMV	MDA(H)	VIS
A	460 (435)	900	510 (485)	1600
B		1000		580 (555)
C			1400	
D				

Circling to WEST side of RWY only.

CHANGE : VAR.

INSTRUMENT APPROACH CHART

RORS / SHIMOJISHIMA RNP RWY17

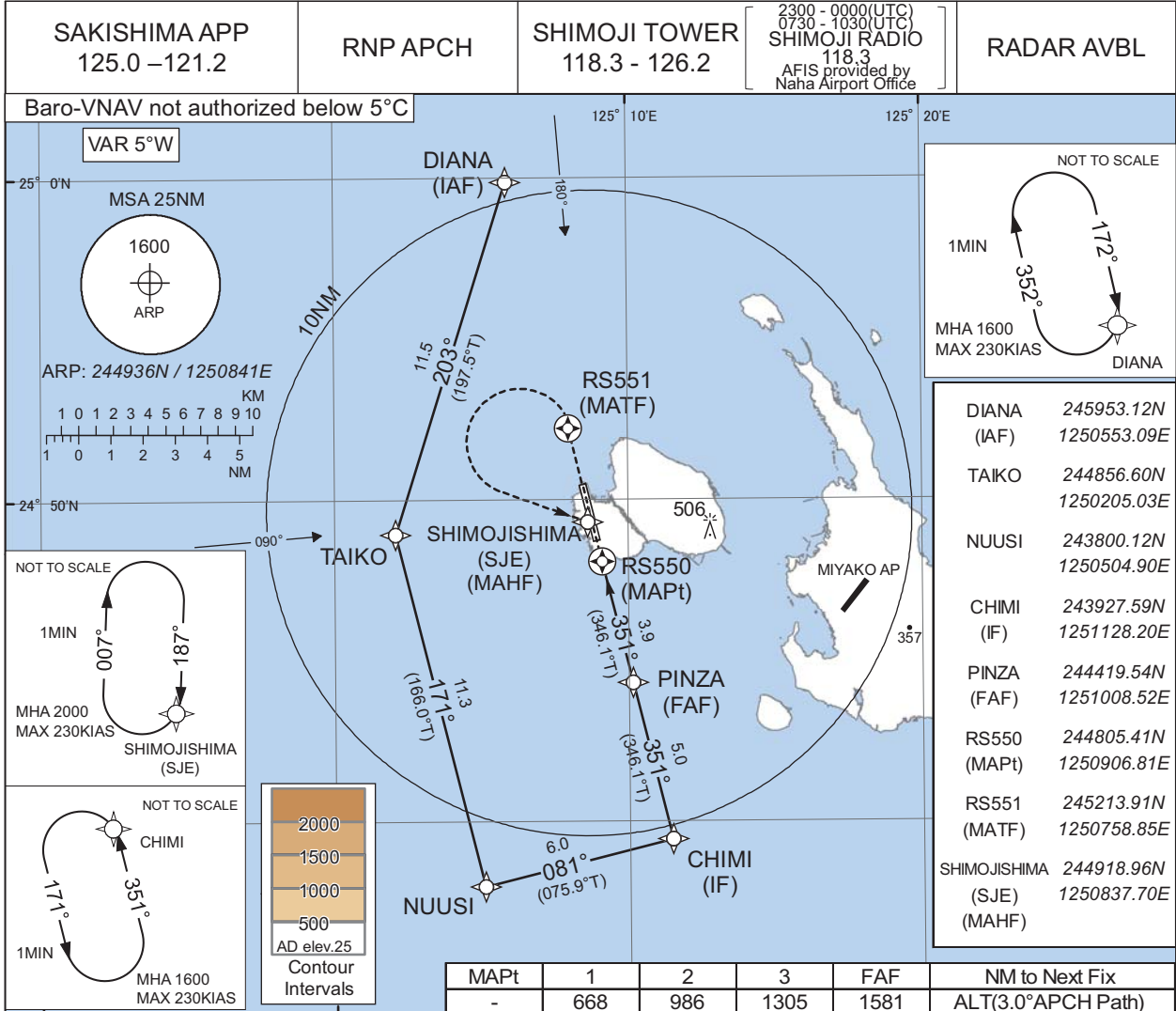


CHANGE : Missed APCH for using VOR/DME abolished.

INSTRUMENT APPROACH CHART

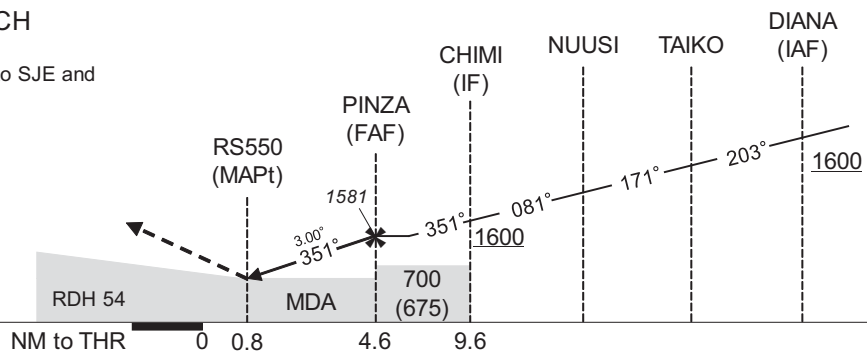
RORS / SHIMOJISHIMA

RNP RWY35



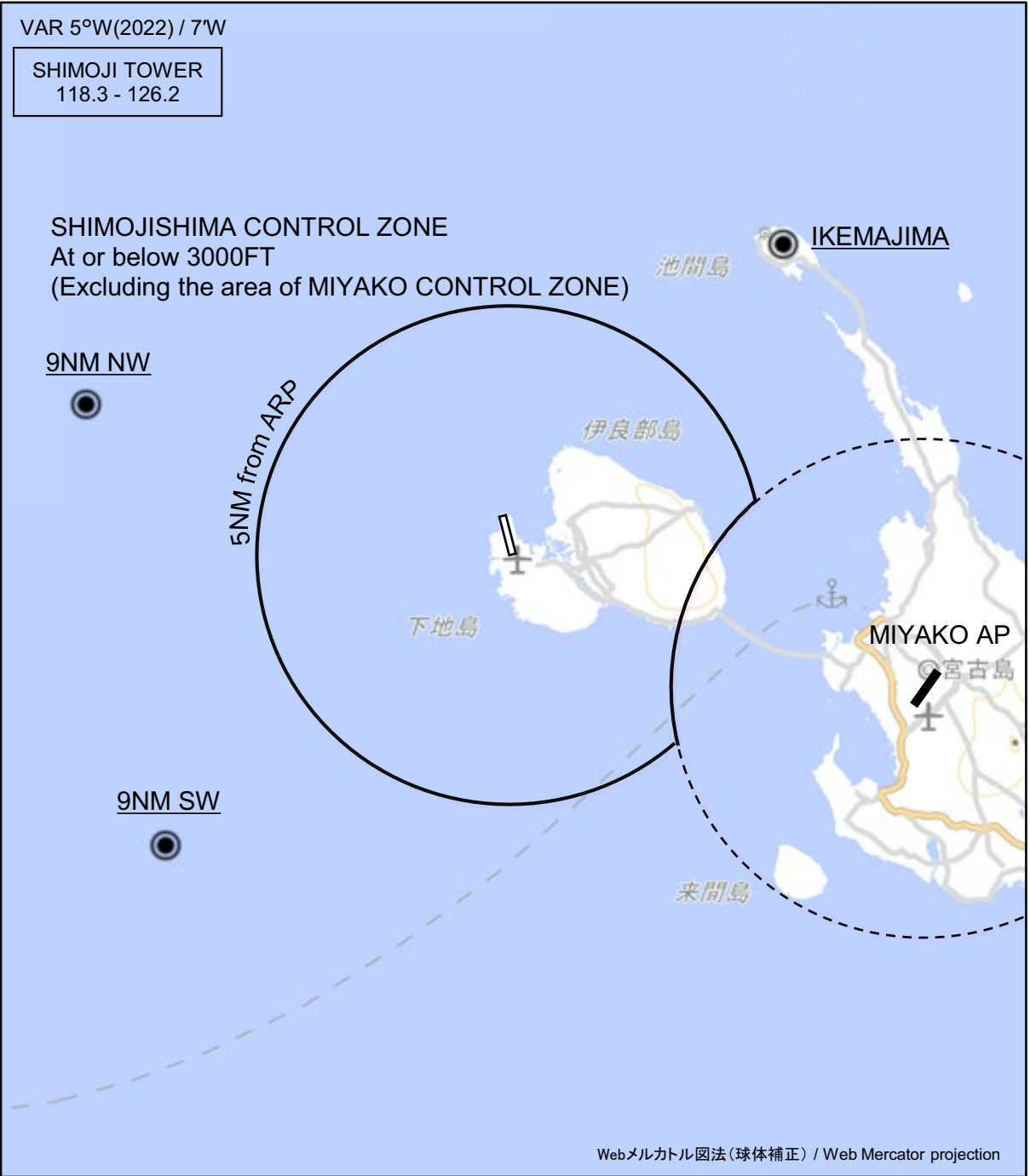
MISSED APPROACH

Direct to RS551, turn left direct to SJE and hold at 2000FT.  
Contact SAKISHIMA APP.



RORS / SHIMOJISHIMA

Visual REP



CHANGE : Map updated. BRG/DIST from ARP.

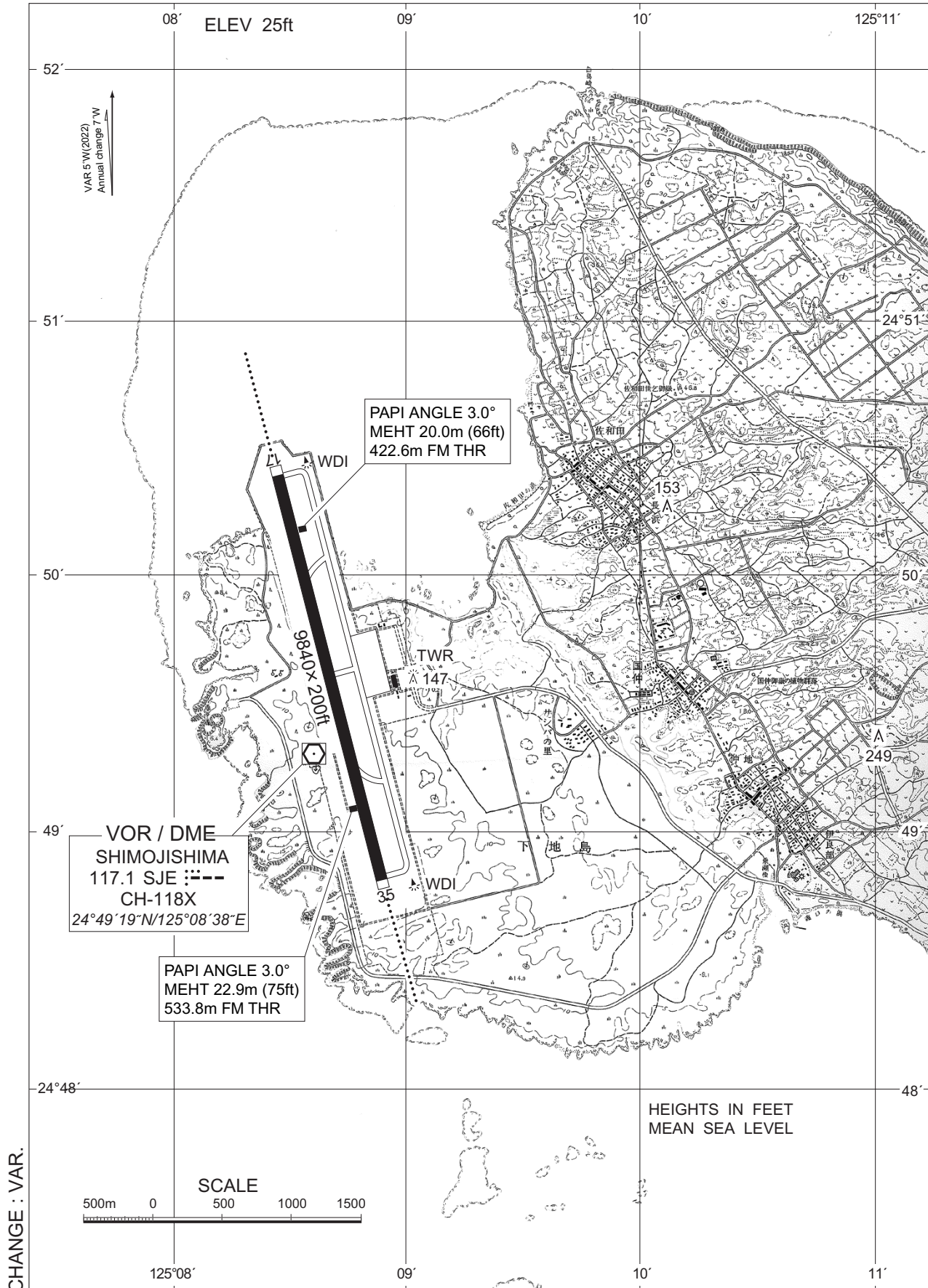
※図中に標高を示す数字がある場合、単位はメートル(m)である。The unit of measurement used to express elevation is meter(m).

Call sign	BRG / DIST from ARP	Remarks
池間島 Ikemajima	040°T / 8.2NM	島 Island
9NM NW	290°T / 9.0NM	海上 Over the sea
9NM SW	230°T / 9.0NM	海上 Over the sea



RORS / SHIMOJISHIMA

LDG CHART



RORS / SHIMOJISHIMA

Minimum Vectoring Altitude CHART

