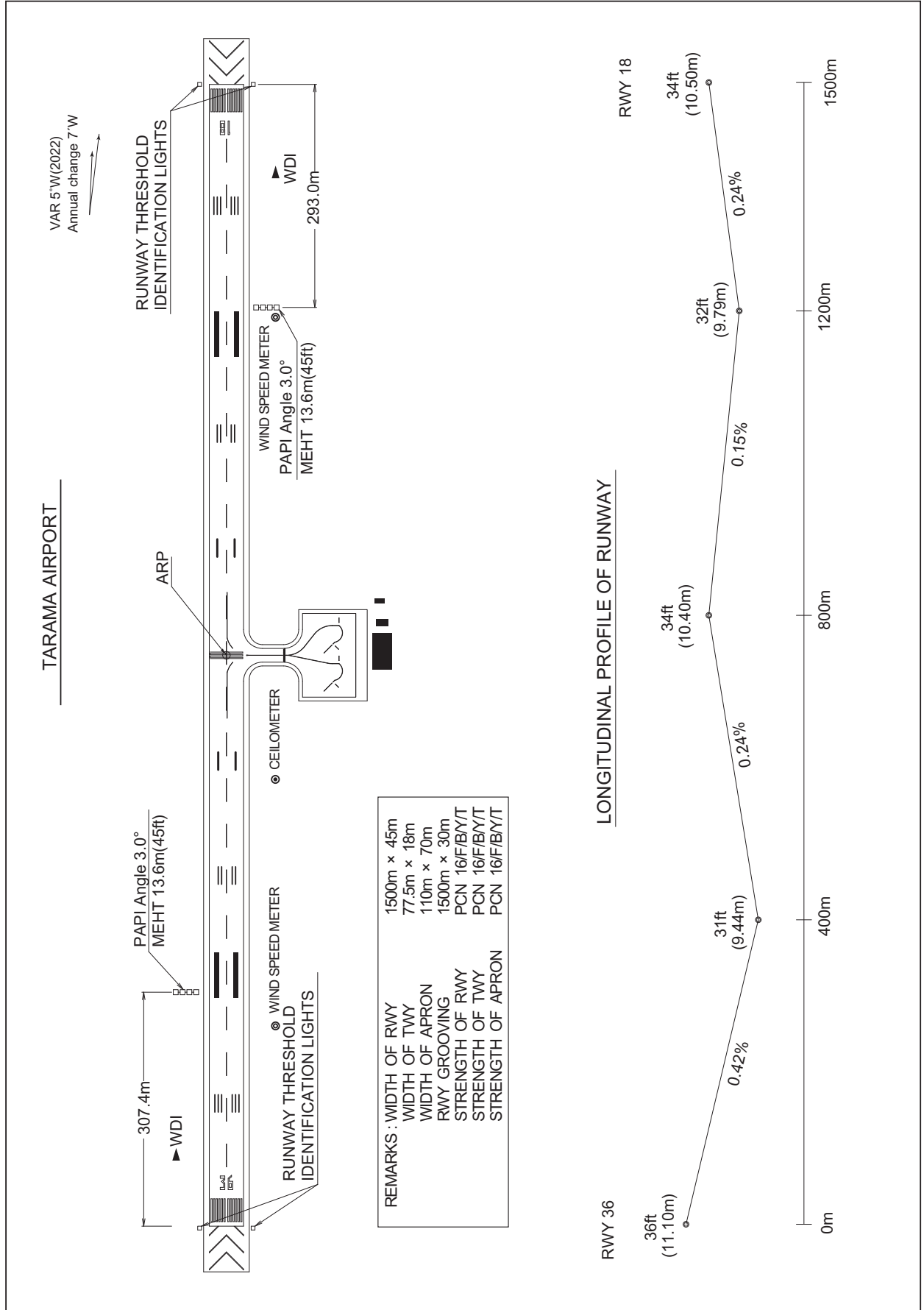


RORT / TARAMA

AD CHART

CHANGE : VAR.



REMARKS : WIDTH OF RWY 1500m x 45m
 WIDTH OF TWY 77.5m x 18m
 WIDTH OF APRON 110m x 70m
 RWY GROOVING 1500m x 30m
 STRENGTH OF RWY PCN 16/F/B/Y/T
 STRENGTH OF TWY PCN 16/F/B/Y/T
 STRENGTH OF APRON PCN 16/F/B/Y/T

INTENTIONALLY LEFT BLANK

STANDARD DEPARTURE CHART -INSTRUMENT

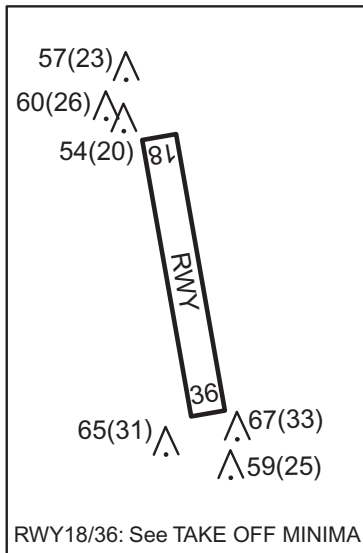
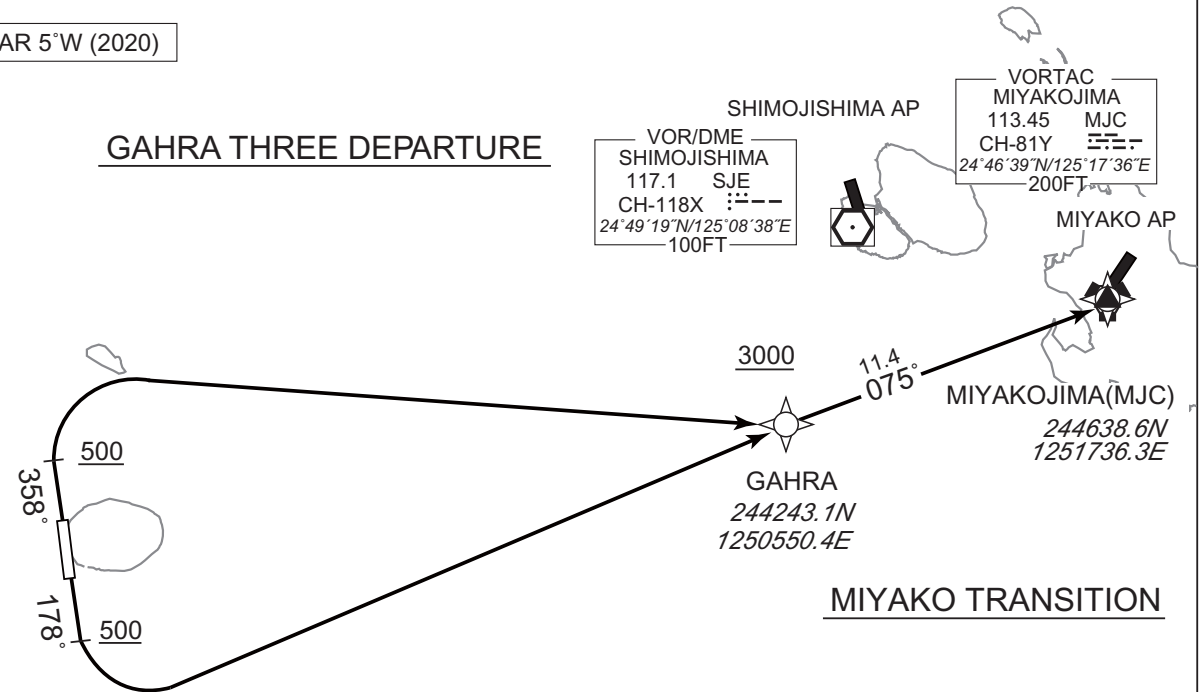
RORT / TARAMA

RNAV SID and TRANSITION

GAHRA THREE DEPARTURE MIYAKO TRANSITION	RNP1
--------------------------------------------	------

Note GNSS required.

VAR 5°W (2020)



CHANGE : Navigation Specification(Basic RNP1 → RNP1).

GAHRA THREE DEPARTURE

RWY18 : Climb on HDG178° at or above 500FT, turn left direct to GAHRA at or above 3000FT.
RWY36 : Climb on HDG358° at or above 500FT, turn right direct to GAHRA at or above 3000FT.

MIYAKO TRANSITION

From GAHRA at or above 3000FT, to MJC.

STANDARD DEPARTURE CHART -INSTRUMENT

RORT/ TARAMA

RNAV SID and TRANSITION

GAHRA THREE DEPARTURE

RWY18

Serial Number	Path Descriptor	Waypoint Identifier	Fly Over	Course °M(°T)	Magnetic Variation	Distance (NM)	Turn Direction	Altitude (FT)	Speed (KIAS)	Vertical Angle	Navigation Specification
001	VA	-	-	178 (172.8)	-4.9	-	-	+500	-	-	RNP1
002	DF	GAHRA	-	-	-4.9	-	L	+3000	-	-	RNP1

RWY36

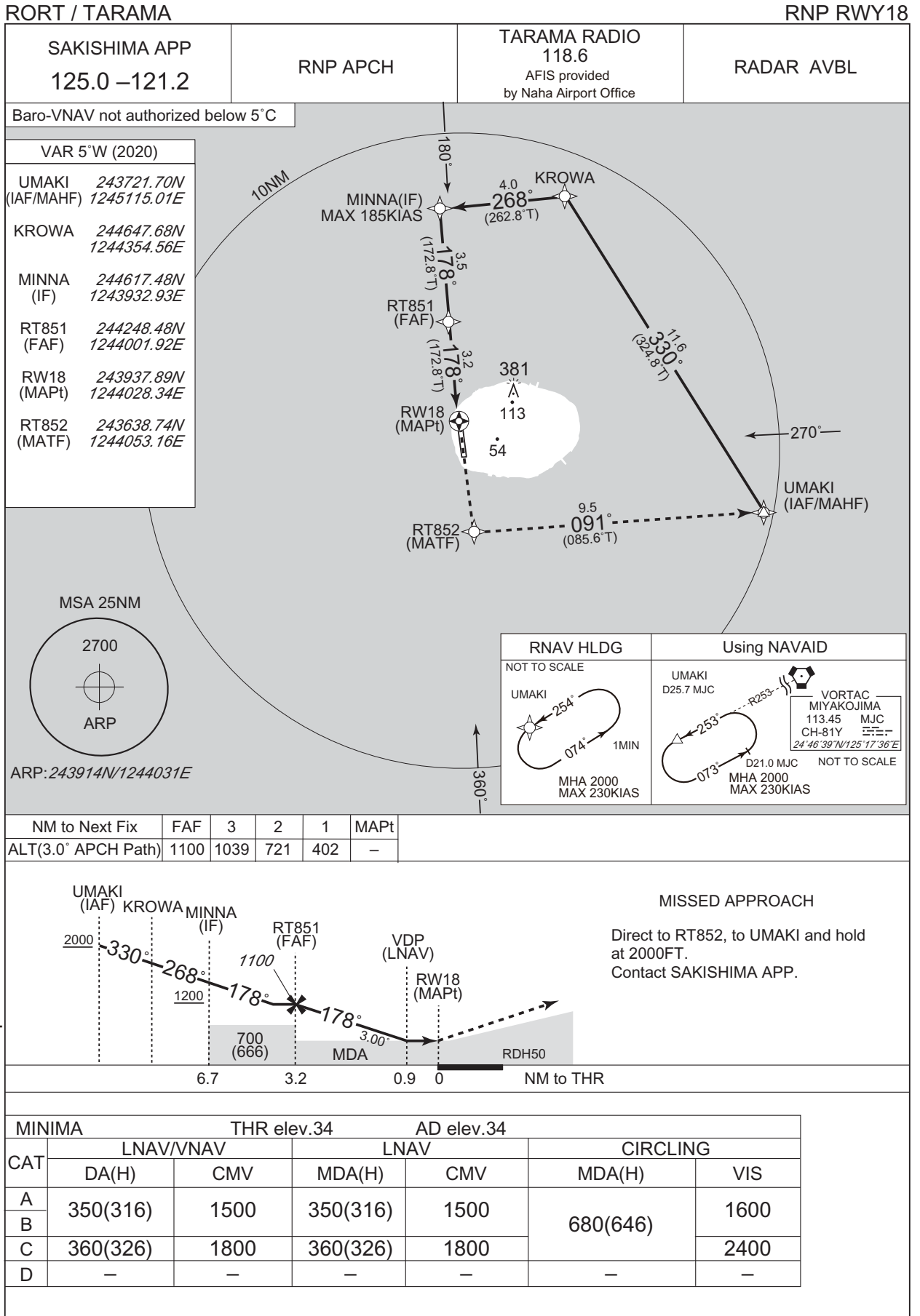
Serial Number	Path Descriptor	Waypoint Identifier	Fly Over	Course °M(°T)	Magnetic Variation	Distance (NM)	Turn Direction	Altitude (FT)	Speed (KIAS)	Vertical Angle	Navigation Specification
001	VA	-	-	358 (352.8)	-4.9	-	-	+500	-	-	RNP1
002	DF	GAHRA	-	-	-4.9	-	R	+3000	-	-	RNP1

MIYAKO TRANSITION

Serial Number	Path Descriptor	Waypoint Identifier	Fly Over	Course °M(°T)	Magnetic Variation	Distance (NM)	Turn Direction	Altitude (FT)	Speed (KIAS)	Vertical Angle	Navigation Specification
001	IF	GAHRA	-	-	-4.9	-	-	+3000	-	-	RNP1
002	TF	MJC	-	075 (069.8)	-4.9	11.4	-	-	-	-	RNP1

CHANGE : Navigation Specification(Basic RNP1 → RNP1).

INSTRUMENT APPROACH CHART

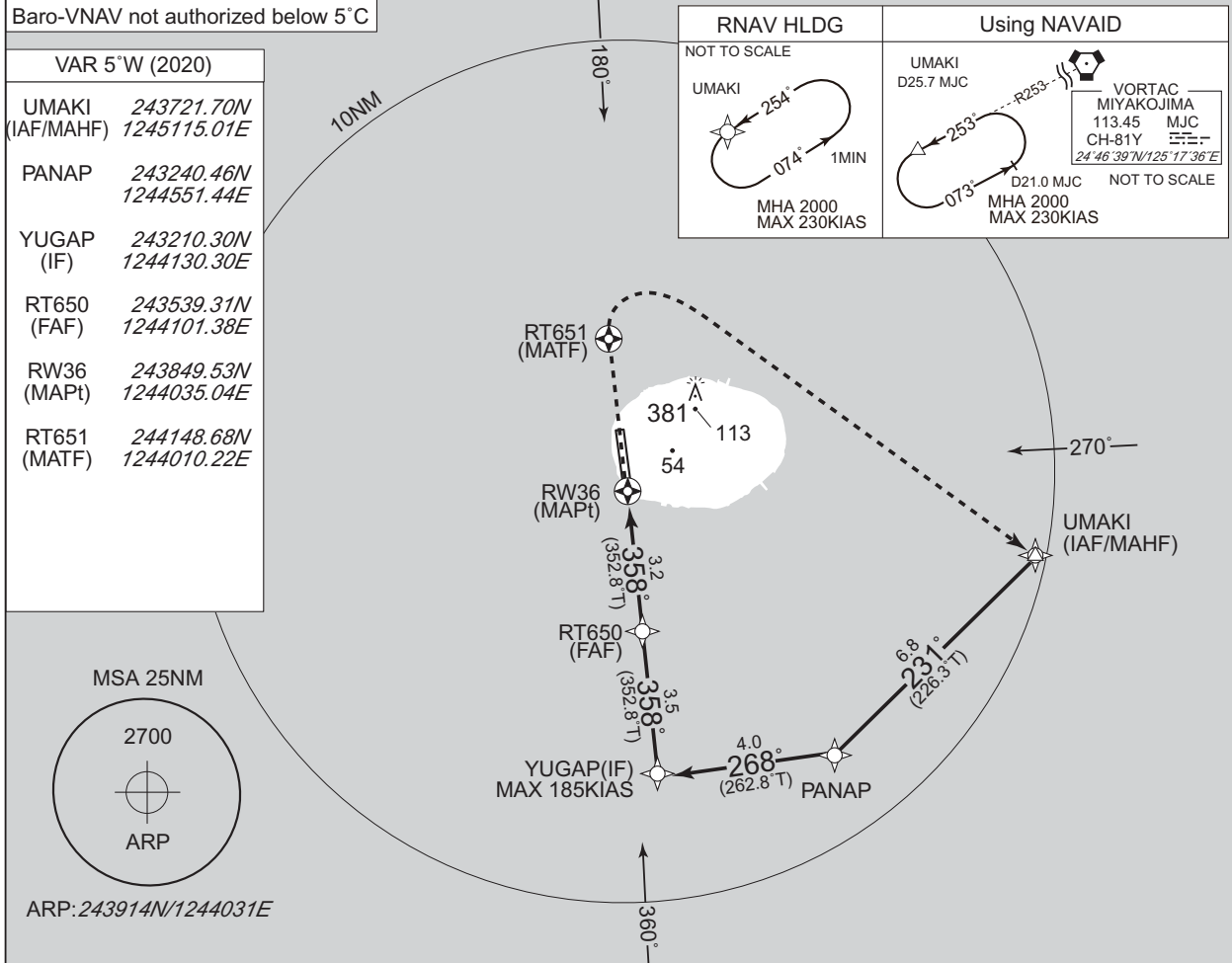


INSTRUMENT APPROACH CHART

RORT / TARAMA

RNP RWY36

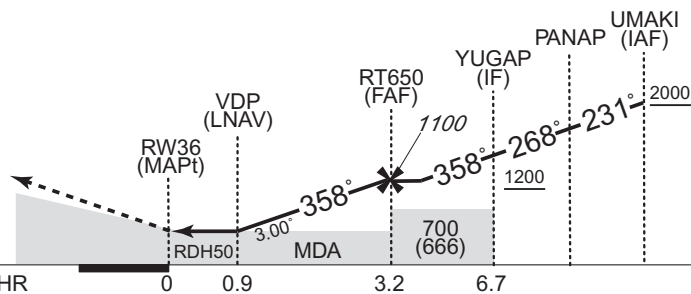
SAKISHIMA APP 125.0 –121.2	RNP APCH	TARAMA RADIO 118.6 AFIS provided by Naha Airport Office	RADAR AVBL
-------------------------------	----------	------------------------------------------------------------------	------------



CHANGE: PROC renamed. Requirement for RNP.

MISSED APPROACH

Direct to RT651, turn right direct to UMAKI and hold at 2000FT. Contact SAKISHIMA APP.



Missed APCH climb gradient MNM 5.0%

CAT	LNAV/VNAV		LNAV		CIRCLING	
	DA(H)	CMV	MDA(H)	CMV	MDA(H)	VIS
A	340(304)	1500	340(306)	1500	680(646)	1600
B	360(324)	1800	360(326)	1800		2400
C	–	–	–	–	–	–
D	–	–	–	–	–	–

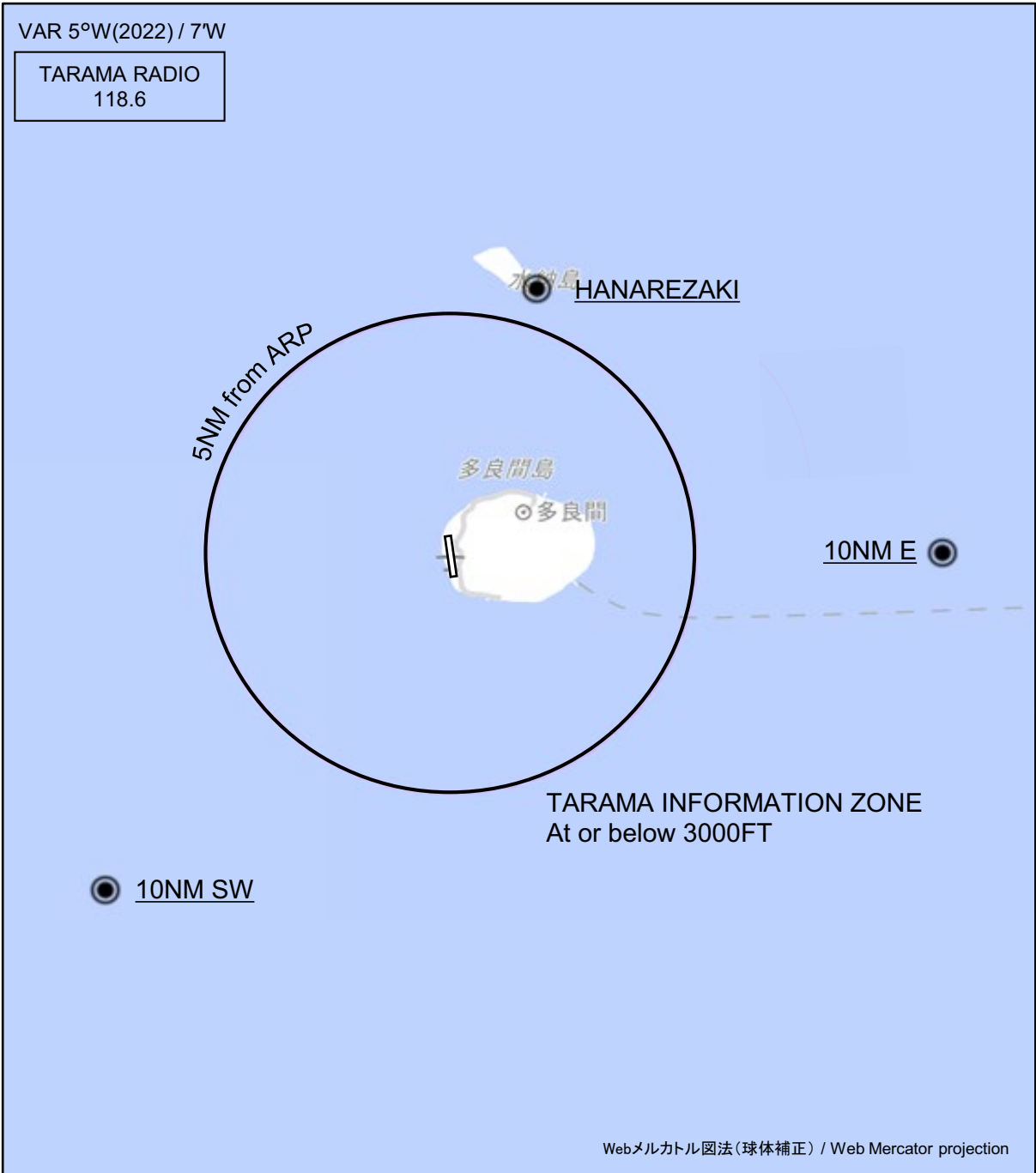
MINIMA with Missed APCH climb gradient of 2.5% are not established.

RORT / TARAMA

Visual REP

VAR 5°W(2022) / 7°W

TARAMA RADIO
118.6



CHANGE : Map updated. BRG/DIST from ARP.

※図中に標高を示す数字がある場合、単位はメートル(m)である。The unit of measurement used to express elevation is meter(m).

Call sign	BRG / DIST from ARP	Remarks
ハナレ崎 Hanarezaki	017°T / 5.8NM	岬 Cape
10NM E	090°T / 10.0NM	海上 Over the sea
10NM SW	225°T / 10.0NM	海上 Over the sea

RORT / TARAMA

LDG CHART

ELEV 34 ft

VAR 5°W(2022)
Annual change 7' W

41°

381

8
RWYTIL

PAPI ANGLE 3.0°
MEHT 13.6m(45ft)
293.0m fm THR

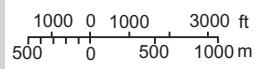
39°

36
RWYTIL

PAPI ANGLE 3.0°
MEHT 13.6m(45ft)
307.4m fm THR

24°37'

SCALE



ELEVATIONS AND
HEIGHTS IN FEET
MEAN SEA LEVEL

124°40'

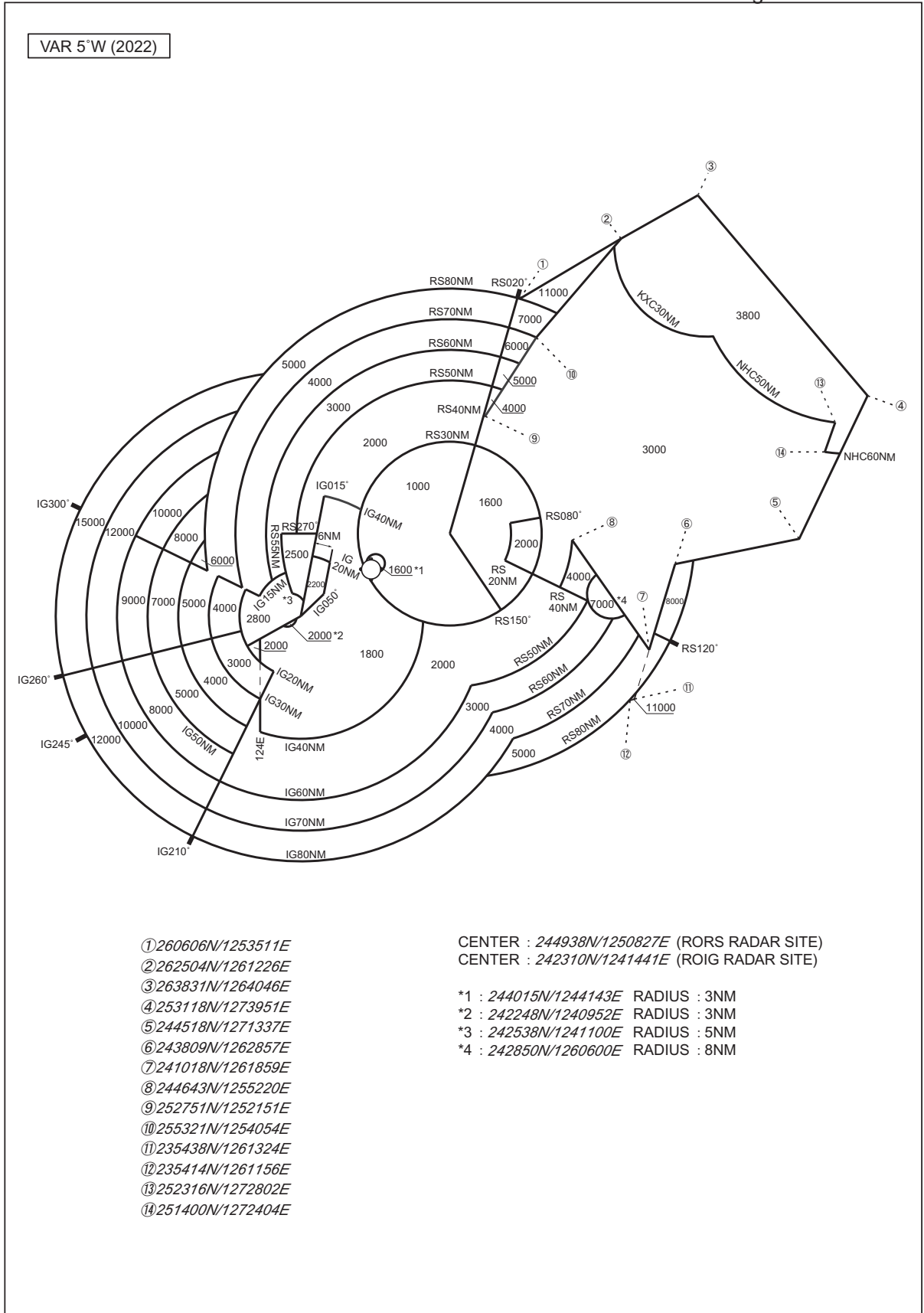
42'

44'

CHANGE : VAR.

RORT / TARAMA

Minimum Vectoring Altitude CHART



INTENTIONALLY LEFT BLANK