

**AD 2 AERODROMES**

**RORT AD 2.1 AERODROME LOCATION INDICATOR AND NAME**

**RORT - TARAMA**

**RORT AD 2.2 AERODROME GEOGRAPHICAL AND ADMINISTRATIVE DATA**

|   |                                                                                              |                                                                                                                                     |
|---|----------------------------------------------------------------------------------------------|-------------------------------------------------------------------------------------------------------------------------------------|
| 1 | ARP coordinates and site at AD                                                               | 243914N/1244031E<br>352°/1.0km from RWY 36 THR                                                                                      |
| 2 | Direction and distance from (city)                                                           |                                                                                                                                     |
| 3 | Elevation/ Reference temperature                                                             | 33.8ft / 32° C(2004-2008)                                                                                                           |
| 4 | Geoid undulation at AD ELEV PSN                                                              | 95ft                                                                                                                                |
| 5 | MAG VAR/ Annual change                                                                       | 5°W(2022) / 7°W                                                                                                                     |
| 6 | AD Administration, address, telephone, telefax, telex, AFS, e-mail and/or Web-site addresses | OKINAWA PREF. PUBLIC AP.<br>2351-7, Aza-Nakasuji, Tarama-son, Miyako-gun, Okinawa Pref.<br>TEL : 0980-79-2637<br>FAX : 0980-79-2211 |
| 7 | Types of traffic permitted(IFR/VFR)                                                          | IFR/VFR                                                                                                                             |
| 8 | Remarks                                                                                      | Nil                                                                                                                                 |

**RORT AD 2.3 OPERATIONAL HOURS**

|    |                           |                                                                    |
|----|---------------------------|--------------------------------------------------------------------|
| 1  | AD Administration         | 2300 - 0900                                                        |
| 2  | Customs and immigration   | On request<br>Customs: 0980-72-2310<br>Immigration: 0980-72-3440   |
| 3  | Health and sanitation     | Nil                                                                |
| 4  | AIS Briefing Office       | Nil                                                                |
| 5  | ATS Reporting Office(ARO) | Nil                                                                |
| 6  | MET Briefing Office       | H24 (NAHA)                                                         |
| 7  | ATS                       | ATS: 2300 - 0900<br>Remarks: AFIS provided by NAHA Airport Office. |
| 8  | Fuelling                  | Nil                                                                |
| 9  | Handling                  | Ask AD Administration                                              |
| 10 | Security                  | Ask AD Administration                                              |
| 11 | De-icing                  | Nil                                                                |
| 12 | Remarks                   | Nil                                                                |

**RORT AD 2.4 HANDLING SERVICES AND FACILITIES**

|   |                                         |     |
|---|-----------------------------------------|-----|
| 1 | Cargo-handling facilities               | Nil |
| 2 | Fuel/ oil types                         | Nil |
| 3 | Fuelling facilities/ capacity           | Nil |
| 4 | De-icing facilities                     | Nil |
| 5 | Hangar space for visiting aircraft      | Nil |
| 6 | Repair facilities for visiting aircraft | Nil |
| 7 | Remarks                                 | Nil |

**RORT AD 2.5 PASSENGER FACILITIES**

|   |                      |                                                        |
|---|----------------------|--------------------------------------------------------|
| 1 | Hotels               | Hotels in Tarama village                               |
| 2 | Restaurants          | In Tarama village                                      |
| 3 | Transportation       | Nil                                                    |
| 4 | Medical facilities   | Clinic 5km from airport                                |
| 5 | Bank and Post Office | Bank in Tarama village / Post Office in Tarama village |
| 6 | Tourist Office       | Nil                                                    |
| 7 | Remarks              | Nil                                                    |

**RORT AD 2.6 RESCUE AND FIRE FIGHTING SERVICES**

|   |                                             |                                  |
|---|---------------------------------------------|----------------------------------|
| 1 | AD category for fire fighting               | CAT 6                            |
| 2 | Rescue equipment                            | Chemical fire fighting truck x 2 |
| 3 | Capability for removal of disabled aircraft | Incapable                        |
| 4 | Remarks                                     | Nil                              |

**RORT AD 2.7 SEASONAL AVAILABILITY-CLEARING**

|   |                             |                |
|---|-----------------------------|----------------|
| 1 | Types of clearing equipment | Not Applicable |
| 2 | Clearance priorities        | Not Applicable |
| 3 | Remarks                     | Nil            |

**RORT AD 2.8 APRONS, TAXIWAYS AND CHECK LOCATIONS DATA**

|   |                                     |                                                                        |
|---|-------------------------------------|------------------------------------------------------------------------|
| 1 | Apron surface and strength          | Surface : Asphalt-concrete<br>Strength : PCN 16/F/B/Y/T                |
| 2 | Taxiway width, surface and strength | Width : 18m<br>Surface : Asphalt-concrete<br>Strength : PCN 16/F/B/Y/T |
| 3 | ACL and elevation                   | Not Available                                                          |
| 4 | VOR checkpoints                     | Not Available                                                          |
| 5 | INS checkpoints                     | (Spot NR)<br>1 : 243913.23N 1244036.86E<br>2 : 243914.85N 1244036.64E  |
| 6 | Remarks                             | Nil                                                                    |

**RORT AD 2.9 SURFACE MOVEMENT GUIDANCE AND CONTROL SYSTEM AND MARKINGS**

|   |                                                                                                                |                                                                                                                                                               |
|---|----------------------------------------------------------------------------------------------------------------|---------------------------------------------------------------------------------------------------------------------------------------------------------------|
| 1 | Use of aircraft stand ID signs, TWY guide lines and Visual docking/ parking guidance system of aircraft stands | Nil                                                                                                                                                           |
| 2 | RWY and TWY markings and LGT                                                                                   | RWY:RWY18/36<br>(Marking) RWY designation, RWY CL, RWY THR, RWY middle point, Aiming point, TDZ, RWY side stripe<br>TWY:<br>(Marking) TWY CL, TWY side stripe |
| 3 | Stop bars                                                                                                      | Nil                                                                                                                                                           |
| 4 | Remarks                                                                                                        | (Marking) Overrun area                                                                                                                                        |

**RORT AD 2.10 AERODROME OBSTACLES**

- █ In Area2 Nil
- █ In Area3 To be developed

**RORT AD 2.11 METEOROLOGICAL INFORMATION PROVIDED**

|    |                                                                        |                                                                                                                                                                                                                                                                                                                                                                                                                            |
|----|------------------------------------------------------------------------|----------------------------------------------------------------------------------------------------------------------------------------------------------------------------------------------------------------------------------------------------------------------------------------------------------------------------------------------------------------------------------------------------------------------------|
| 1  | Associated MET Office                                                  | NAHA                                                                                                                                                                                                                                                                                                                                                                                                                       |
| 2  | Hours of service<br>MET Office outside hours                           | H24 (NAHA)                                                                                                                                                                                                                                                                                                                                                                                                                 |
| 3  | Office responsible for TAF preparation<br>Periods of validity          | Nil                                                                                                                                                                                                                                                                                                                                                                                                                        |
| 4  | Trend forecast<br>Interval of issuance                                 | Nil                                                                                                                                                                                                                                                                                                                                                                                                                        |
| 5  | Briefing/ consultation provided                                        | Briefing is available upon inquiry at NAHA                                                                                                                                                                                                                                                                                                                                                                                 |
| 6  | Flight documentation<br>Language(s) used                               | C<br>En                                                                                                                                                                                                                                                                                                                                                                                                                    |
| 7  | Charts and other information available<br>for briefing or consultation | S <sub>6</sub> , U <sub>85</sub> , U <sub>7</sub> , U <sub>5</sub> , U <sub>3</sub> , U <sub>25</sub> , U <sub>2</sub> /T <sub>r</sub> , P <sub>S</sub> , P <sub>5</sub> , P <sub>3</sub> , P <sub>25</sub> , P <sub>SWE</sub> , P <sub>SWF</sub> , P <sub>SWG</sub> , P <sub>SWI</sub> ,<br>P <sub>SWM</sub> , P <sub>SW</sub> (domestic), E, C, W <sub>E</sub> , W <sub>F</sub> , W <sub>G</sub> , W <sub>I</sub> , W, N |
| 8  | Supplementary equipment<br>available for providing information         | Nil                                                                                                                                                                                                                                                                                                                                                                                                                        |
| 9  | ATS units provided with information                                    | RADIO                                                                                                                                                                                                                                                                                                                                                                                                                      |
| 10 | Additional information(limitation of ser-<br>vice, etc.)               | Nil                                                                                                                                                                                                                                                                                                                                                                                                                        |

**RORT AD 2.12 RUNWAY PHYSICAL CHARACTERISTICS**

| Designations<br>RWY NR | TRUE BRG               | Dimensions of<br>RWY(M)        | Strength(PCN) and<br>surface of RWY | THR coordinates<br>THR geoid undulation | THR elevation and<br>highest elevation of TDZ<br>of precision APP RWY |
|------------------------|------------------------|--------------------------------|-------------------------------------|-----------------------------------------|-----------------------------------------------------------------------|
| 1                      | 2                      | 3                              | 4                                   | 5                                       | 6                                                                     |
| 18                     | 172.78°                | 1500x45                        | PCN 16/F/B/Y/T<br>Asphalt concrete  | 243937.89N 1244028.34E<br>95ft          | THR ELEV:34ft                                                         |
| 36                     | 352.78°                | 1500x45                        | PCN 16/F/B/Y/T<br>Asphalt concrete  | 243849.53N 1244035.04E<br>95ft          | THR ELEV:36ft                                                         |
| Slope of RWY           | Strip<br>Dimensions(M) | RESA(Overrun)<br>Dimensions(M) | Remarks                             |                                         |                                                                       |
| 7                      | 10                     | 11                             | 14                                  |                                         |                                                                       |
| See AD2.24 AD chart    | 1620x150<br>1620x150   | 42x155<br>42x155               | RWY Grooving : 1500m x 30m          |                                         |                                                                       |

**RORT AD 2.13 DECLARED DISTANCES**

| RWY Designator | TORA<br>(m) | TODA<br>(m) | ASDA<br>(m) | LDA<br>(m) | Remarks |
|----------------|-------------|-------------|-------------|------------|---------|
| 1              | 2           | 3           | 4           | 5          | 6       |
| 18             | 1500        | 1500        | 1500        | 1500       | Nil     |
| 36             | 1500        | 1500        | 1500        | 1500       | Nil     |

**RORT AD 2.14 APPROACH AND RUNWAY LIGHTING**

| RWY Designator                                 | APCH LGT type LEN INTST | RTHL Color WBAR | PAPI (VASIS) Angle DIST FM THR MEHT | RTZL LEN | RCLL LEN Spacing Color INTST | REDL LEN Spacing Color INTST | RENL Color WBAR | STWL LEN Color |
|------------------------------------------------|-------------------------|-----------------|-------------------------------------|----------|------------------------------|------------------------------|-----------------|----------------|
| 1                                              | 2                       | 3               | 4                                   | 5        | 6                            | 7                            | 8               | 9              |
| 18                                             | Nil                     | Nil             | PAPI 3.0°/LEFT 293M 45FT            | Nil      | Nil                          | Nil                          | Nil             | Nil            |
| 36                                             | Nil                     | Nil             | PAPI 3.0°/LEFT 307.4M 45FT          | Nil      | Nil                          | Nil                          | Nil             | Nil            |
| Remarks                                        |                         |                 |                                     |          |                              |                              |                 |                |
| 10                                             |                         |                 |                                     |          |                              |                              |                 |                |
| RWY THR ID LGT for RWY 18/36 THR (Color:White) |                         |                 |                                     |          |                              |                              |                 |                |

**RORT AD 2.15 OTHER LIGHTING, SECONDARY POWER SUPPLY**

|   |                                                          |                                                                                            |
|---|----------------------------------------------------------|--------------------------------------------------------------------------------------------|
| 1 | ABN/IBN location, characteristics and hours of operation | Nil                                                                                        |
| 2 | LDI location and LGT<br>Anemometer location and LGT      | LDI: Nil<br>Anemometer: RWY18 : 303m FM RWY18 THR, LGTD<br>RWY36 : 260m FM RWY36 THR, LGTD |
| 3 | TWY edge and center line lighting                        | Nil                                                                                        |
| 4 | Secondary power supply/ switch-over time                 | Within 15 sec : PAPI, RWY THR ID LGT                                                       |
| 5 | Remarks                                                  | Nil                                                                                        |

**RORT AD 2.16 HELICOPTER LANDING AREA**

|     |
|-----|
| Nil |
|-----|

**RORT AD 2.17 ATS AIRSPACE**

| Designation and lateral limits |                                                | Vertical limits (ft) | Airspace classification | ATS unit call sign Language | Remarks |
|--------------------------------|------------------------------------------------|----------------------|-------------------------|-----------------------------|---------|
| 1                              |                                                | 2                    | 3                       | 4                           | 6       |
| Tarama Information Zone        | Area within a radius of 5nm(9km) of Tarama ARP | 3,000 or below       | E                       | Tarama Radio En             |         |

**RORT AD 2.18 ATS COMMUNICATION FACILITIES**

| Service designation | Call sign    | Frequency | Hours of operation | Remarks                          |
|---------------------|--------------|-----------|--------------------|----------------------------------|
| 1                   | 2            | 3         | 4                  | 5                                |
| AFIS                | Tarama Radio | 118.6MHz  | 2300 - 0900        | Operated by Naha Airport Office. |

**RORT AD 2.19 RADIO NAVIGATION AND LANDING AIDS**

| Type of aid (VOR declination) | ID | Frequency  | Hours of operation | Position of transmitting antenna coordinates | Elevation of DME transmitting antenna | Remarks                                   |
|-------------------------------|----|------------|--------------------|----------------------------------------------|---------------------------------------|-------------------------------------------|
| 1                             | 2  | 3          | 4                  | 5                                            | 6                                     | 7                                         |
| MSAS                          |    | 1575.42MHz | H24                |                                              |                                       | Transmitting antennas are satellite based |

**RORT AD 2.20 LOCAL TRAFFIC REGULATIONS**

## 1. Airport regulations

|     |
|-----|
| Nil |
|-----|

## 2. Taxiing to and from stands

|     |
|-----|
| Nil |
|-----|

## 3. Parking area for small aircraft(General aviation)

|     |
|-----|
| Nil |
|-----|

## 4. Parking area for helicopters

|     |
|-----|
| Nil |
|-----|

## 5. Apron - taxiing during winter conditions

|     |
|-----|
| Nil |
|-----|

## 6. Taxiing - limitations

|     |
|-----|
| Nil |
|-----|

## 7. School and training flights - technical test flights - use of runways

|     |
|-----|
| Nil |
|-----|

8. Helicopter traffic - limitation

Nil

9. Removal of disabled aircraft from runways

Nil

**RORT AD 2.21 NOISE ABATEMENT PROCEDURES**

Nil

**RORT AD 2.22 FLIGHT PROCEDURES**

**1. TAKE OFF MINIMA**

|                                           | RWY | ACFT CAT | REDL & RCLL     |          | REDL or RCLL or RCL Marking |            | NIL (DAYTIME ONLY) |            |
|-------------------------------------------|-----|----------|-----------------|----------|-----------------------------|------------|--------------------|------------|
|                                           |     |          | CEIL-RVR        | CEIL-VIS | CEIL-RVR                    | CEIL-VIS   | CEIL-RVR           | CEIL-VIS   |
| Multi-Engine ACFT with TKOF ALTN AP FILED | 18  | A,B,C    | -               | -        | -                           | 200'-1600m | -                  | 200'-1600m |
|                                           | 36  | A,B,C    | -               | -        | -                           | 200'-1600m | -                  | 200'-1600m |
| OTHER                                     | 18  | A,B,C    | AVBL LDG MINIMA |          |                             |            |                    |            |
|                                           | 36  |          |                 |          |                             |            |                    |            |

**2. Lost Communication Procedures for Arrival Aircraft under radar navigational guidance**

If radio communications with Sakishima Approach/Radar are lost for one minute, squawk Mode A/3 Code 7600 and ;

- 1) Contact Tarama Radio.
- 2) If unable, proceed in accordance with visual flight rules.
- 3) If unable, proceed to UMAKI at the last assigned altitude, or 2,000 feet whichever is higher, and execute RNP approach.

Note: Procedures other than above will be issued when situation requires.

**RORT AD 2.23 ADDITIONAL INFORMATION**

Nil

**RORT AD 2.24 CHARTS RELATED TO AN AERODROME**

Aerodrome/Heliport Chart  
 Standard Departure Chart - Instrument (GAHRA-RNAV)  
 Instrument Approach Chart (RNP RWY18)  
 Instrument Approach Chart (RNP RWY36)  
 Other Chart (Visual REP)  
 Other Chart (LDG CHART)  
 Other Chart (MVA CHART)

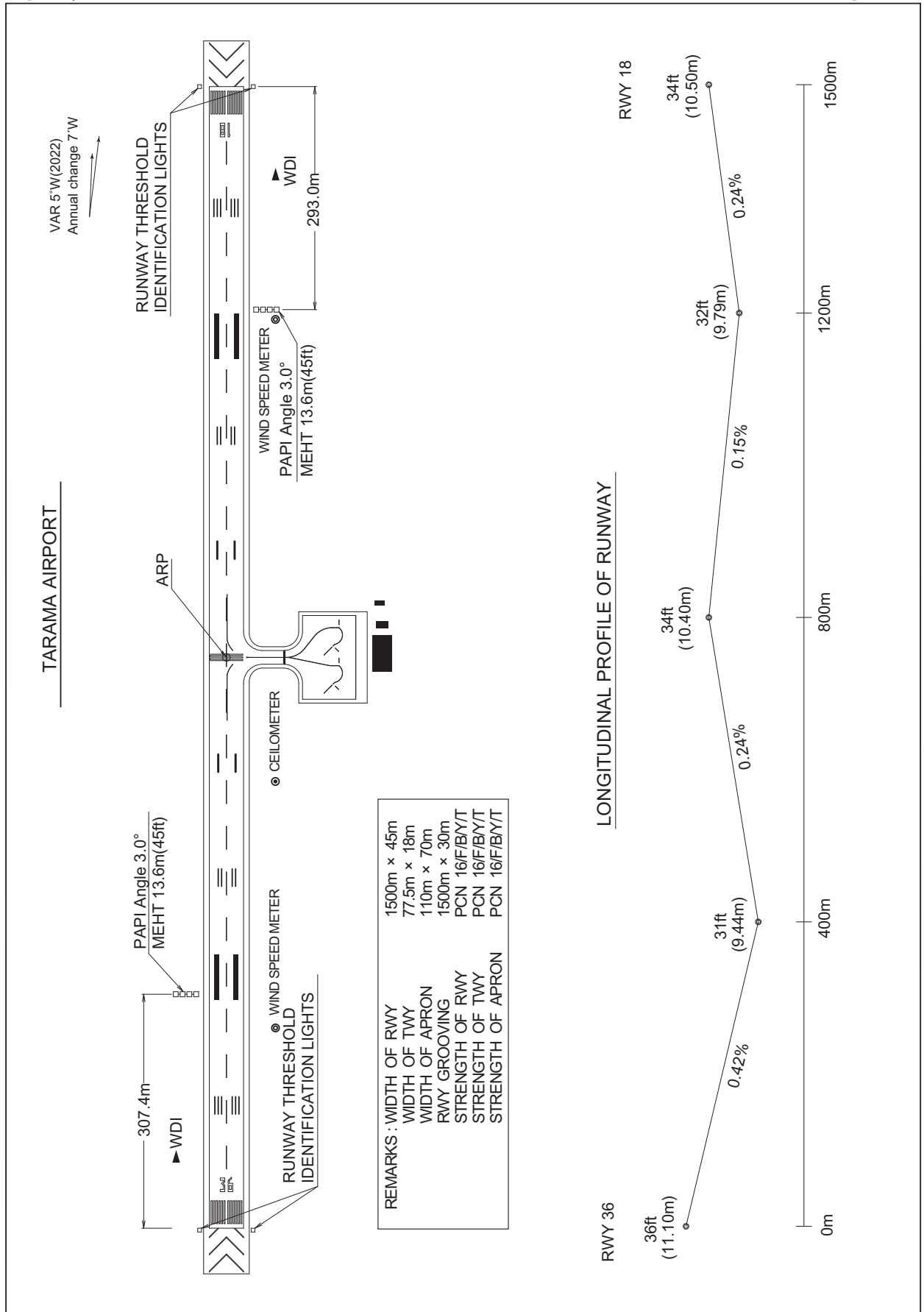
**INTENTIONALLY LEFT BLANK**



RORT / TARAMA

AD CHART

CHANGE : VAR.



REMARKS : WIDTH OF RWY 1500m x 45m  
 WIDTH OF TWY 77.5m x 18m  
 WIDTH OF APRON 110m x 70m  
 RWY GROOVING 1500m x 30m  
 STRENGTH OF RWY PCN 16/F/B/Y/T  
 STRENGTH OF TWY PCN 16/F/B/Y/T  
 STRENGTH OF APRON PCN 16/F/B/Y/T

**INTENTIONALLY LEFT BLANK**

STANDARD DEPARTURE CHART -INSTRUMENT

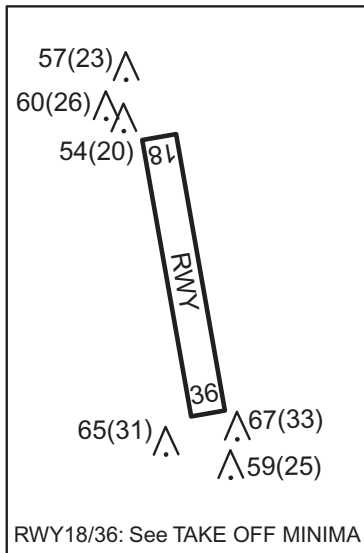
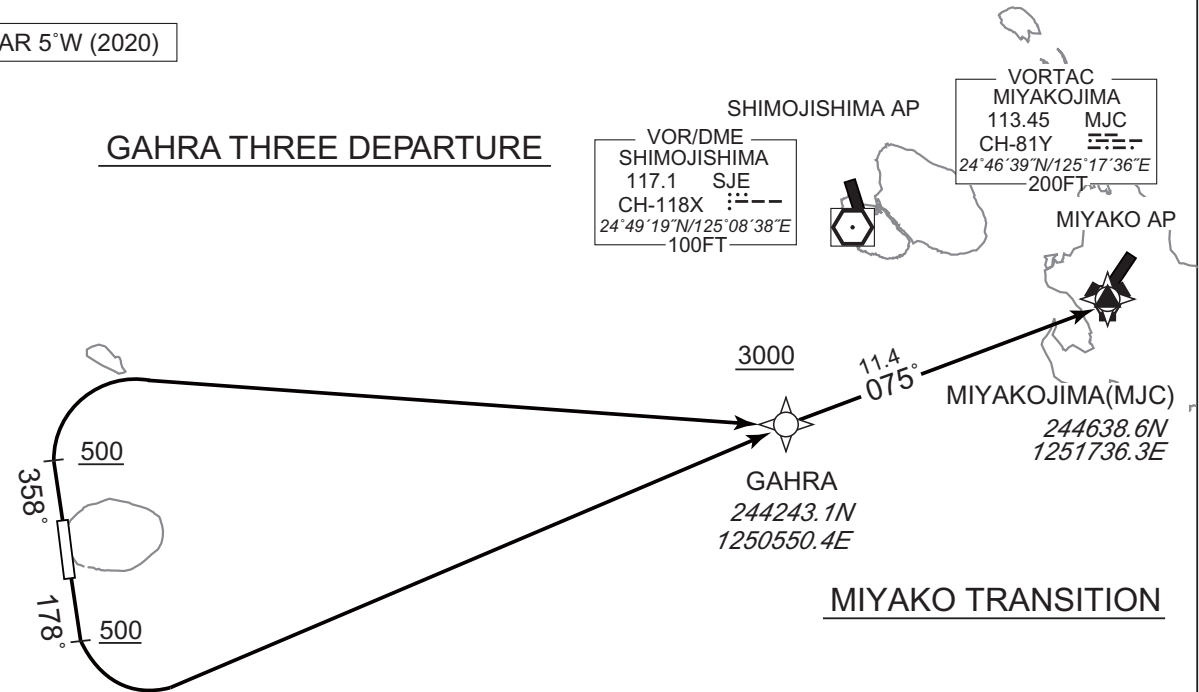
RORT / TARAMA

RNAV SID and TRANSITION

|                                            |      |
|--------------------------------------------|------|
| GAHRA THREE DEPARTURE<br>MIYAKO TRANSITION | RNP1 |
|--------------------------------------------|------|

Note GNSS required.

VAR 5°W (2020)



CHANGE : Navigation Specification(Basic RNP1 → RNP1).

GAHRA THREE DEPARTURE

RWY18 : Climb on HDG178° at or above 500FT, turn left direct to GAHRA at or above 3000FT.  
RWY36 : Climb on HDG358° at or above 500FT, turn right direct to GAHRA at or above 3000FT.

MIYAKO TRANSITION

From GAHRA at or above 3000FT, to MJC.

STANDARD DEPARTURE CHART -INSTRUMENT

RORT/ TARAMA

RNAV SID and TRANSITION

GAHRA THREE DEPARTURE

RWY18

| Serial Number | Path Descriptor | Waypoint Identifier | Fly Over | Course °M(°T)  | Magnetic Variation | Distance (NM) | Turn Direction | Altitude (FT) | Speed (KIAS) | Vertical Angle | Navigation Specification |
|---------------|-----------------|---------------------|----------|----------------|--------------------|---------------|----------------|---------------|--------------|----------------|--------------------------|
| 001           | VA              | -                   | -        | 178<br>(172.8) | -4.9               | -             | -              | +500          | -            | -              | RNP1                     |
| 002           | DF              | GAHRA               | -        | -              | -4.9               | -             | L              | +3000         | -            | -              | RNP1                     |

RWY36

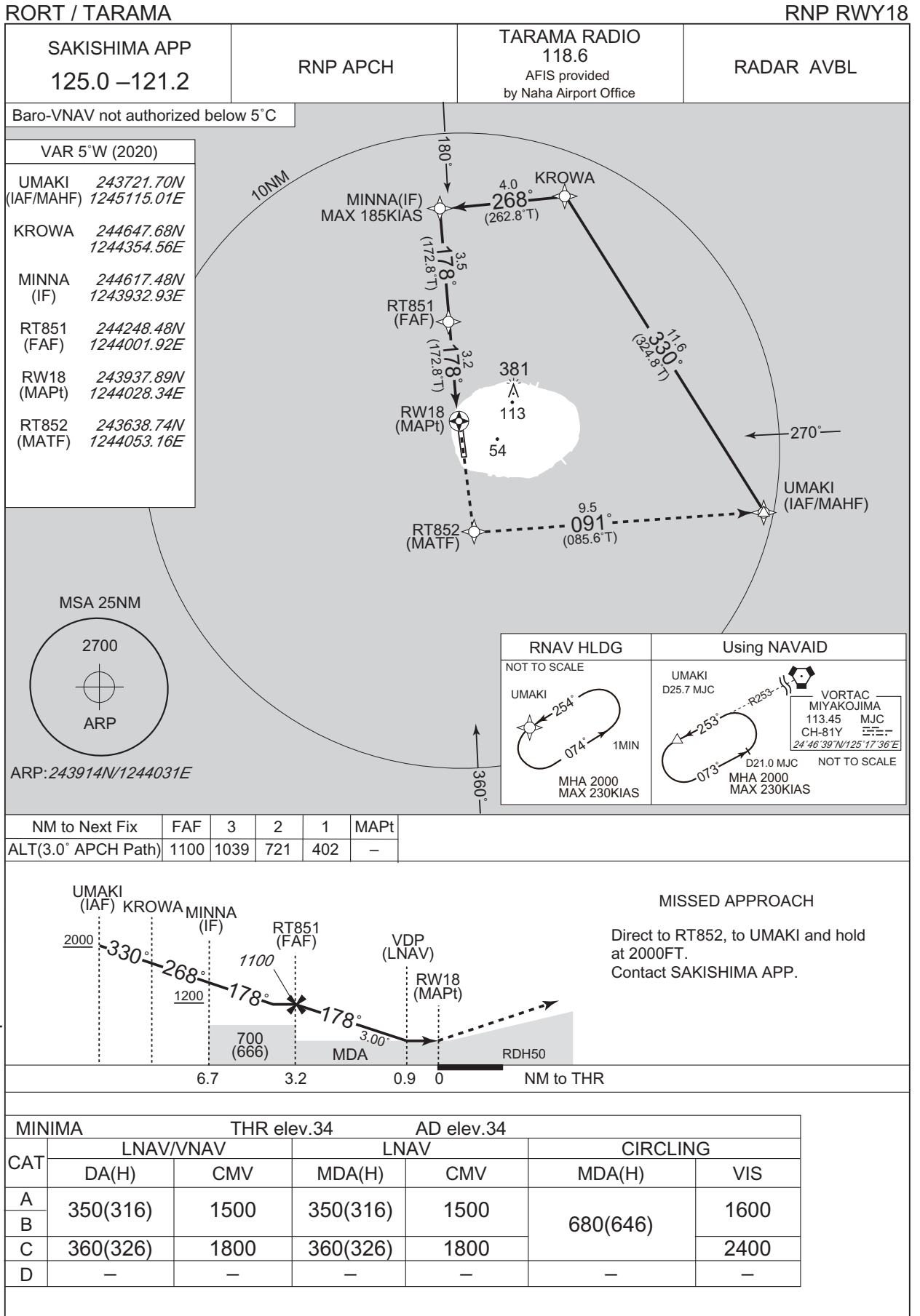
| Serial Number | Path Descriptor | Waypoint Identifier | Fly Over | Course °M(°T)  | Magnetic Variation | Distance (NM) | Turn Direction | Altitude (FT) | Speed (KIAS) | Vertical Angle | Navigation Specification |
|---------------|-----------------|---------------------|----------|----------------|--------------------|---------------|----------------|---------------|--------------|----------------|--------------------------|
| 001           | VA              | -                   | -        | 358<br>(352.8) | -4.9               | -             | -              | +500          | -            | -              | RNP1                     |
| 002           | DF              | GAHRA               | -        | -              | -4.9               | -             | R              | +3000         | -            | -              | RNP1                     |

MIYAKO TRANSITION

| Serial Number | Path Descriptor | Waypoint Identifier | Fly Over | Course °M(°T)  | Magnetic Variation | Distance (NM) | Turn Direction | Altitude (FT) | Speed (KIAS) | Vertical Angle | Navigation Specification |
|---------------|-----------------|---------------------|----------|----------------|--------------------|---------------|----------------|---------------|--------------|----------------|--------------------------|
| 001           | IF              | GAHRA               | -        | -              | -4.9               | -             | -              | +3000         | -            | -              | RNP1                     |
| 002           | TF              | MJC                 | -        | 075<br>(069.8) | -4.9               | 11.4          | -              | -             | -            | -              | RNP1                     |

CHANGE : Navigation Specification(Basic RNP1 → RNP1).

INSTRUMENT APPROACH CHART

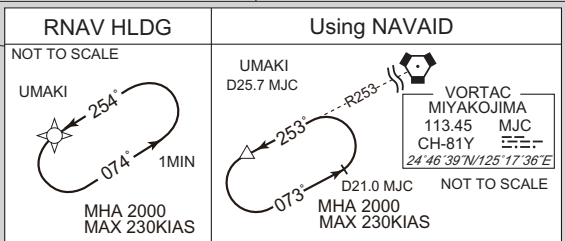
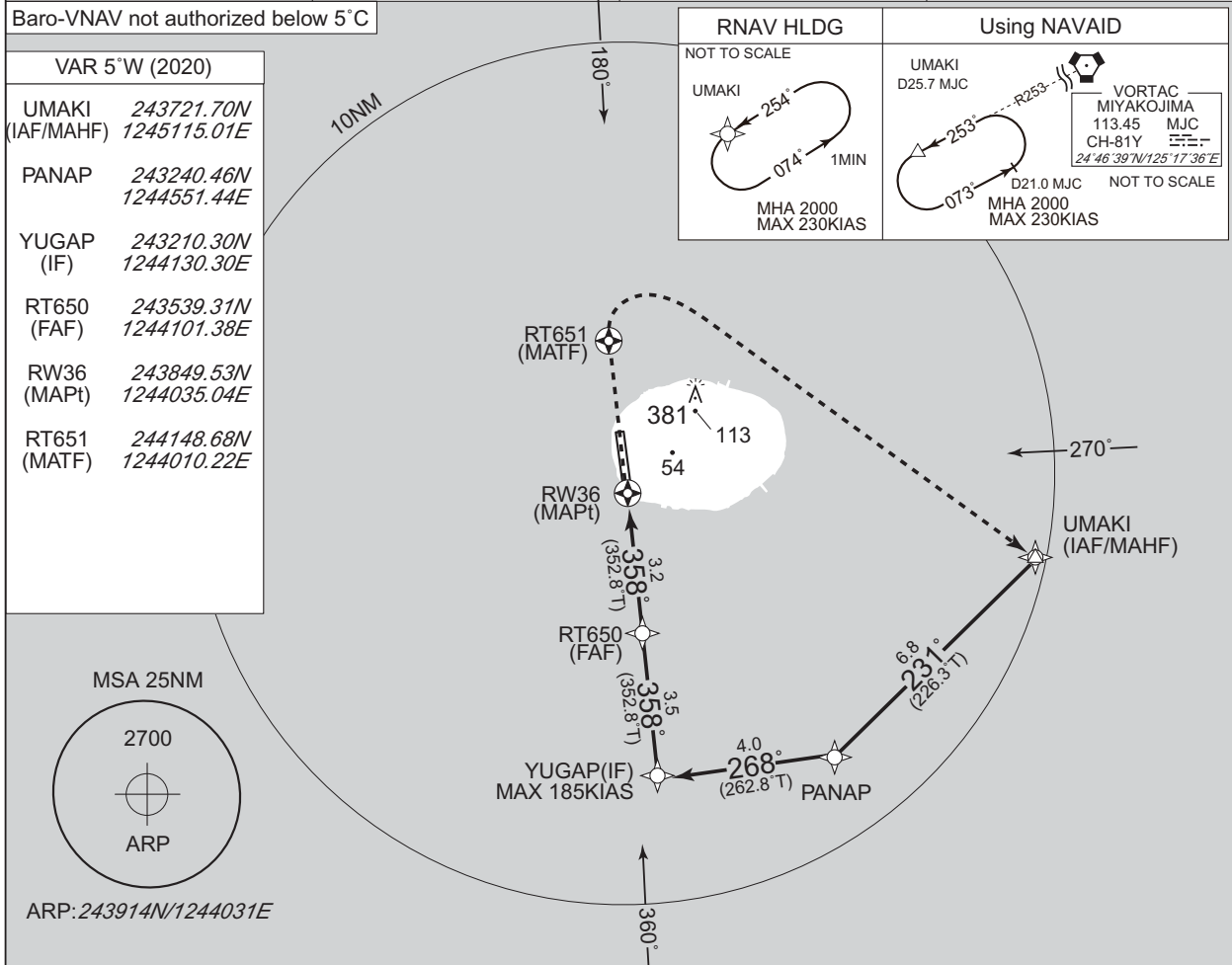


INSTRUMENT APPROACH CHART

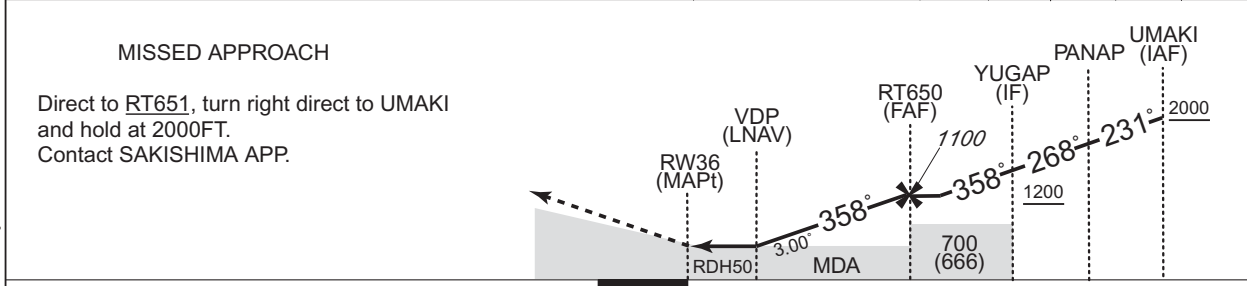
RORT / TARAMA

RNP RWY36

|                               |          |                                                                  |            |
|-------------------------------|----------|------------------------------------------------------------------|------------|
| SAKISHIMA APP<br>125.0 –121.2 | RNP APCH | TARAMA RADIO<br>118.6<br>AFIS provided<br>by Naha Airport Office | RADAR AVBL |
|-------------------------------|----------|------------------------------------------------------------------|------------|



| NM to Next Fix      | MAPt | 1   | 2   | 3    | FAF  |
|---------------------|------|-----|-----|------|------|
| ALT(3.0° APCH Path) | -    | 404 | 722 | 1041 | 1100 |



Missed APCH climb gradient MNM 5.0%

| CAT | LNAV/VNAV |      | LNAV     |      | CIRCLING |      |
|-----|-----------|------|----------|------|----------|------|
|     | DA(H)     | CMV  | MDA(H)   | CMV  | MDA(H)   | VIS  |
| A   | 340(304)  | 1500 | 340(306) | 1500 | 680(646) | 1600 |
| B   | 360(324)  | 1800 | 360(326) | 1800 |          | 2400 |
| C   | -         | -    | -        | -    | -        | -    |
| D   | -         | -    | -        | -    | -        | -    |

MINIMA with Missed APCH climb gradient of 2.5% are not established.

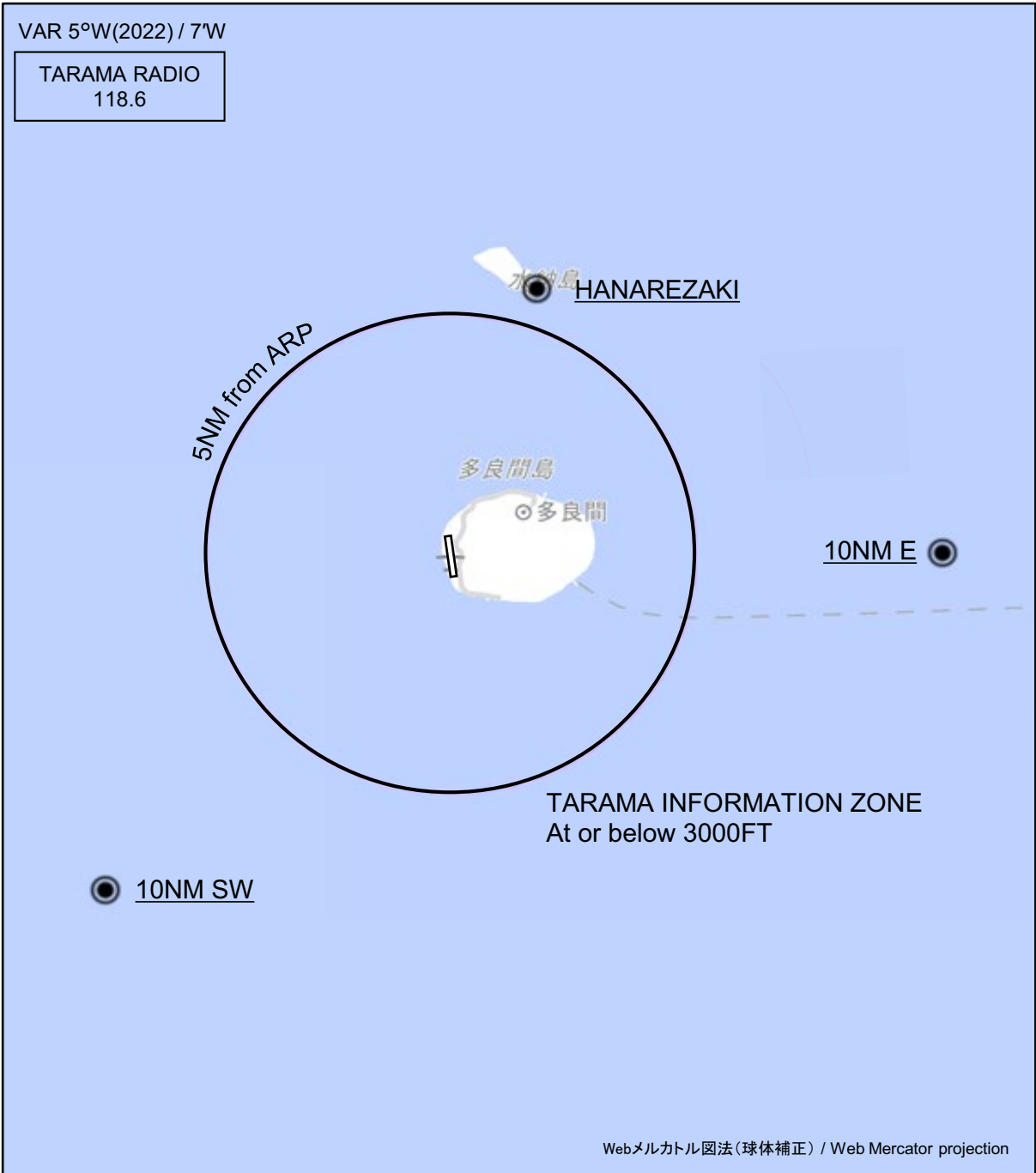
CHANGE: PROC renamed. Requirement for RNP.

RORT / TARAMA

Visual REP

VAR 5°W(2022) / 7°W

TARAMA RADIO  
118.6



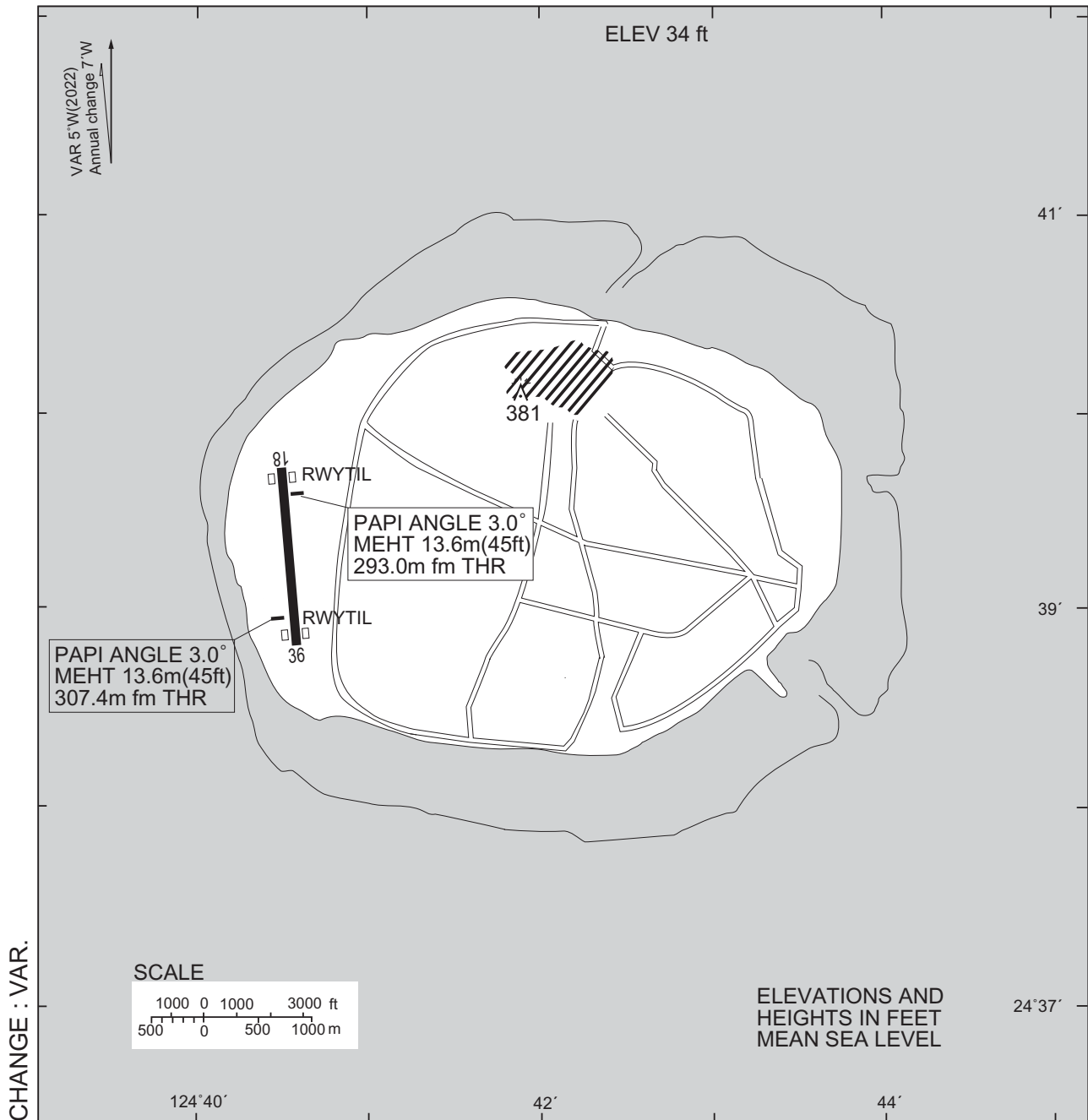
CHANGE : Map updated. BRG/DIST from ARP.

※図中に標高を示す数字がある場合、単位はメートル(m)である。The unit of measurement used to express elevation is meter(m).

| Call sign          | BRG / DIST from ARP | Remarks            |
|--------------------|---------------------|--------------------|
| ハナレ崎<br>Hanarezaki | 017°T / 5.8NM       | 岬<br>Cape          |
| 10NM E             | 090°T / 10.0NM      | 海上<br>Over the sea |
| 10NM SW            | 225°T / 10.0NM      | 海上<br>Over the sea |

RORT / TARAMA

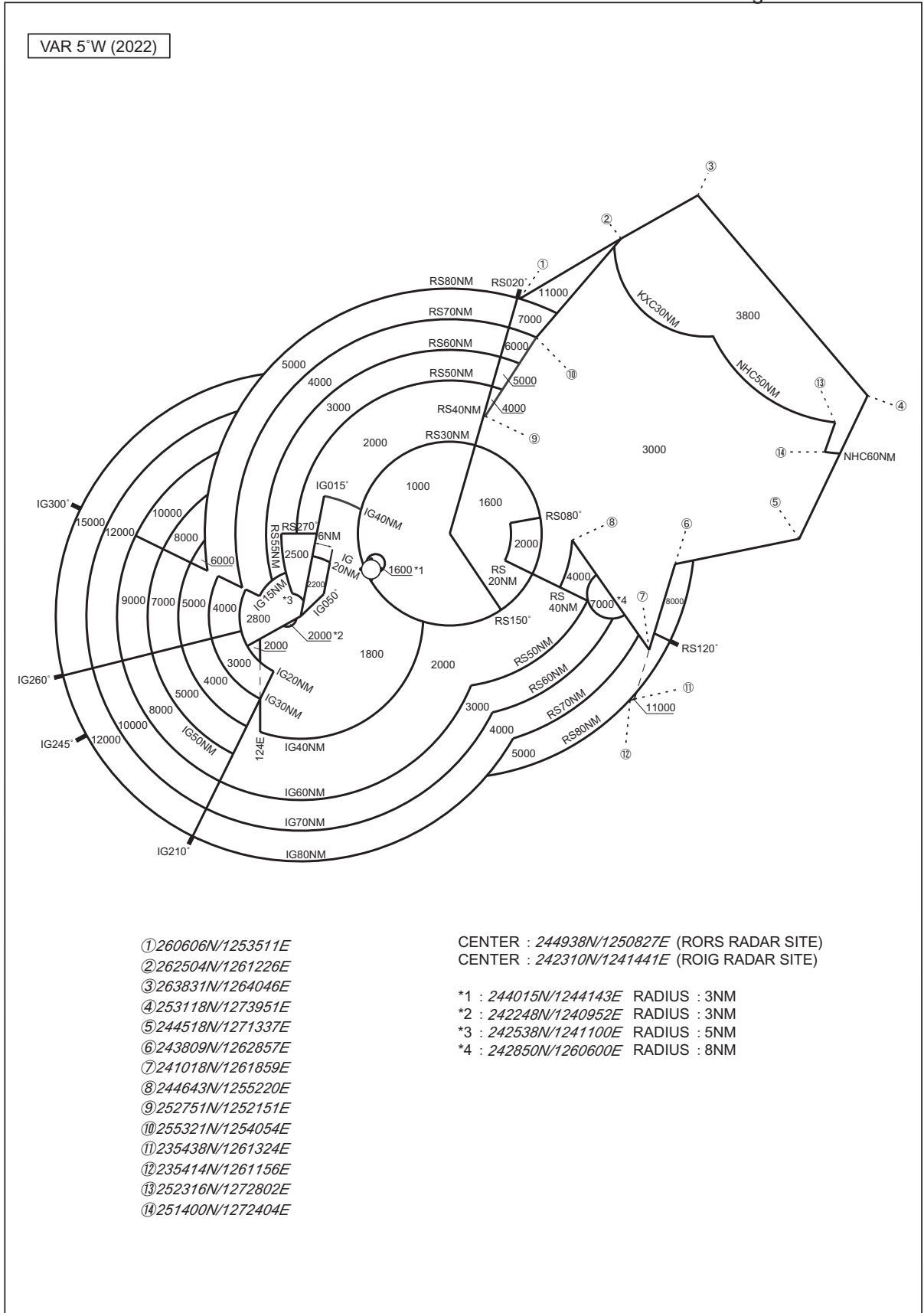
LDG CHART





RORT / TARAMA

Minimum Vectoring Altitude CHART



**INTENTIONALLY LEFT BLANK**