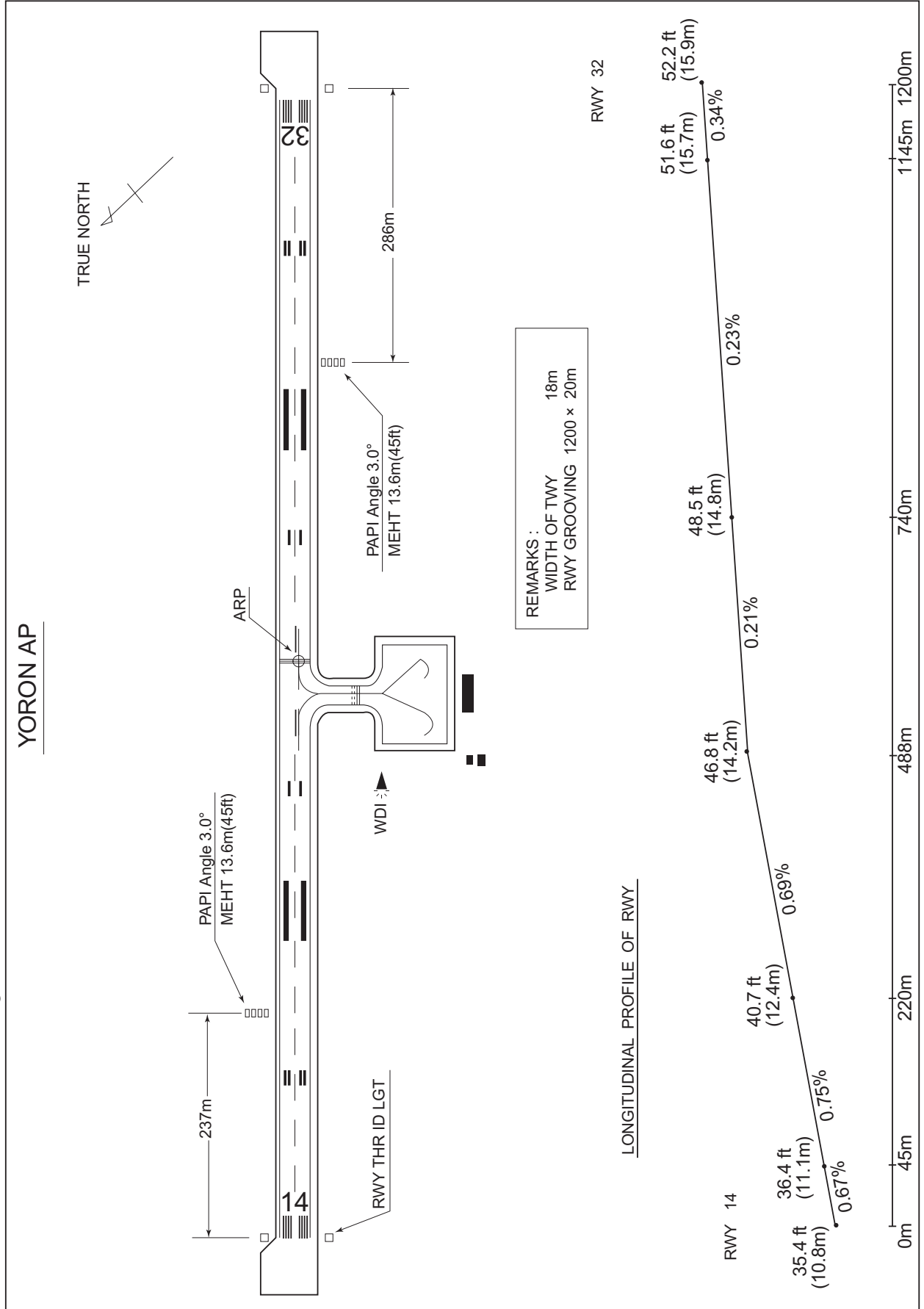


RORY / YORON

AD CHART

CHANGE : Overrun area marking erased.



STANDARD DEPARTURE CHART-INSTRUMENT

RORY / YORON

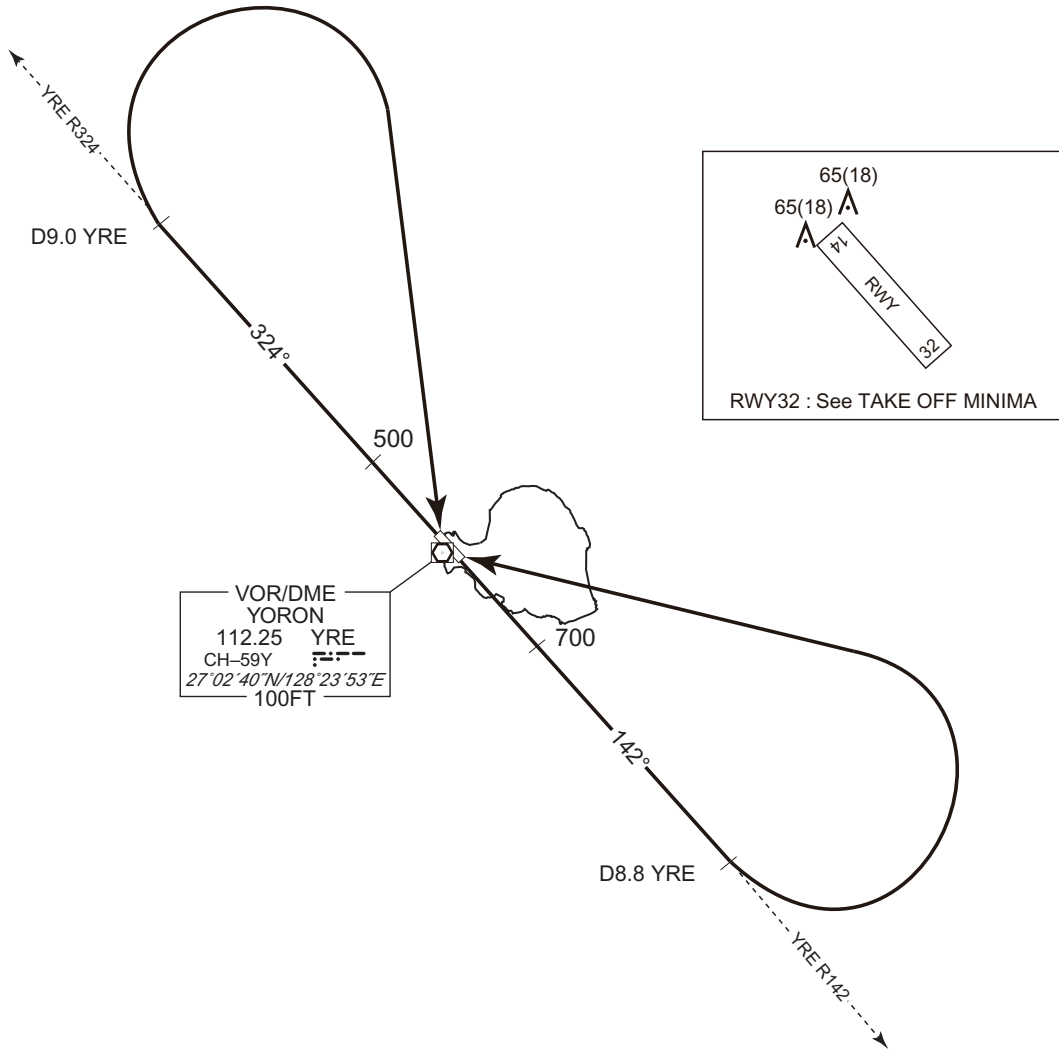
SID

CHANGE : OKUMA ONE DEPARTURE abolished. PROC renamed(YORON REVERSAL THREE DEPARTURE). PROC course. NOTE.

YORON REVERSAL THREE DEPARTURE

RWY14 : Climb RWY HDG until 700FT, climb via YRE R142 to 8.8DME, turn left...
 RWY32 : Climb RWY HDG until 500FT, climb via YRE R324 to 9.0DME, turn right...
 ...direct to YRE VOR/DME.

Note : RWY14 : 5.0% climb gradient required up to 700FT.
 OBST ALT 353FT located at 1.5NM 127° FM end of RWY14.



STANDARD DEPARTURE CHART-INSTRUMENT

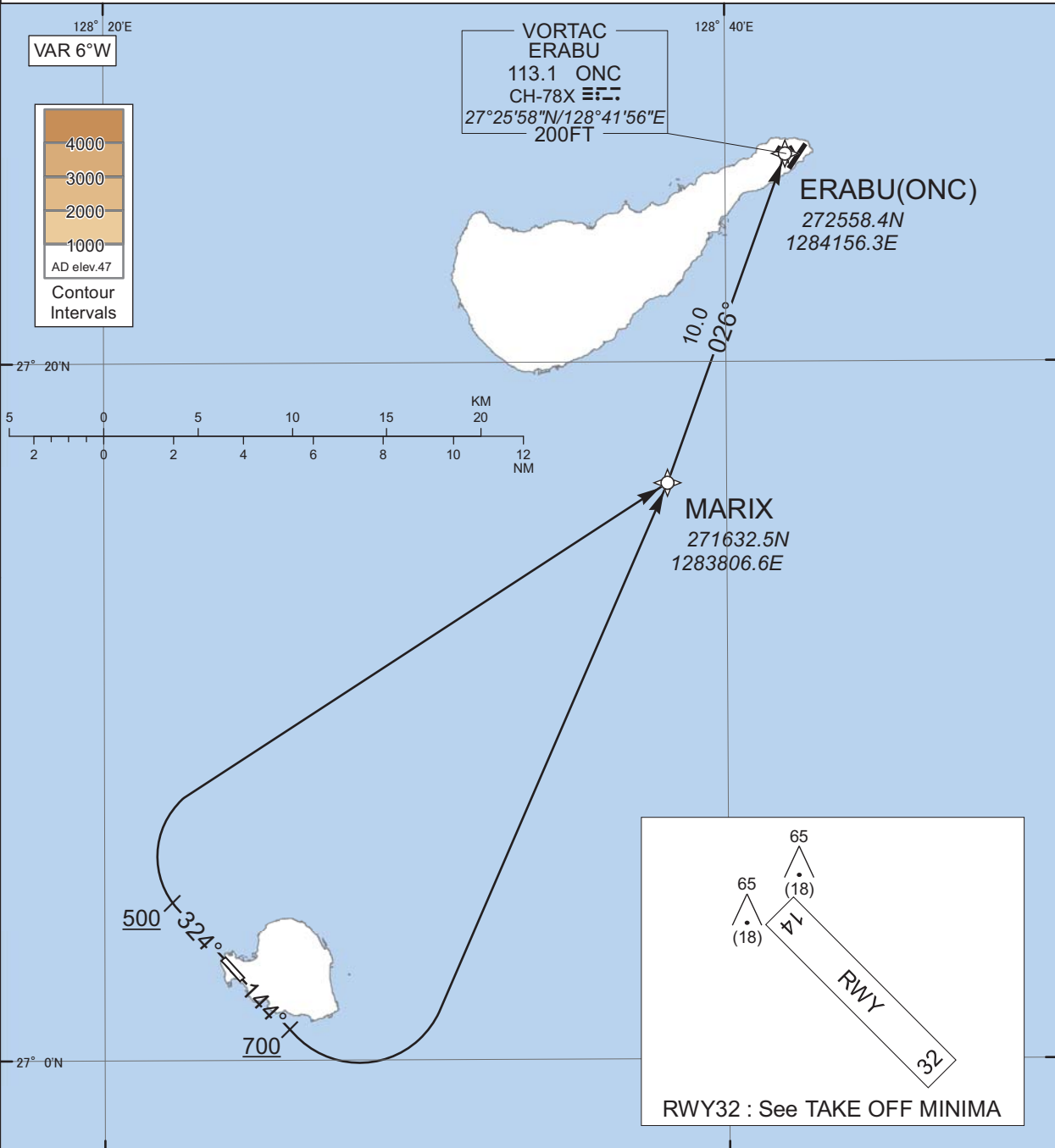
RORY / YORON

RNAV SID

ERABU ONE DEPARTURE

RNP1

Note GNSS required.



CHANGE : Navigation Specification(Basic RNP1 → RNP1).

RWY14 : Climb on HDG144° at or above 700FT, turn left direct to MARIX, to ONC.
RWY32 : Climb on HDG324° at or above 500FT, turn right direct to MARIX, to ONC.

Note RWY14 : 5.0% climb gradient required up to 700FT.
OBST ALT 353FT located at 1.5NM 127° FM end of RWY14.

STANDARD DEPARTURE CHART-INSTRUMENT

RORY / YORON

RNAV SID

ERABU ONE DEPARTURE

RWY14

Serial Number	Path Descriptor	Waypoint Identifier	Fly Over	Course °M(°T)	Magnetic Variation	Distance (NM)	Turn Direction	Altitude (FT)	Speed (KIAS)	Vertical Angle	Navigation Specification
001	VA	-	-	144 (138.2)	-6.0	-	-	+700	-	-	RNP1
002	DF	MARIX	-	-	-6.0	-	L	-	-	-	RNP1
003	TF	ONC	-	026 (019.8)	-6.0	10.0	-	-	-	-	RNP1

RWY32

Serial Number	Path Descriptor	Waypoint Identifier	Fly Over	Course °M(°T)	Magnetic Variation	Distance (NM)	Turn Direction	Altitude (FT)	Speed (KIAS)	Vertical Angle	Navigation Specification
001	VA	-	-	324 (318.2)	-6.0	-	-	+500	-	-	RNP1
002	DF	MARIX	-	-	-6.0	-	R	-	-	-	RNP1
003	TF	ONC	-	026 (019.8)	-6.0	10.0	-	-	-	-	RNP1

CHANGE : Navigation Specification(Basic RNP1 → RNP1).

STANDARD DEPARTURE CHART-INSTRUMENT

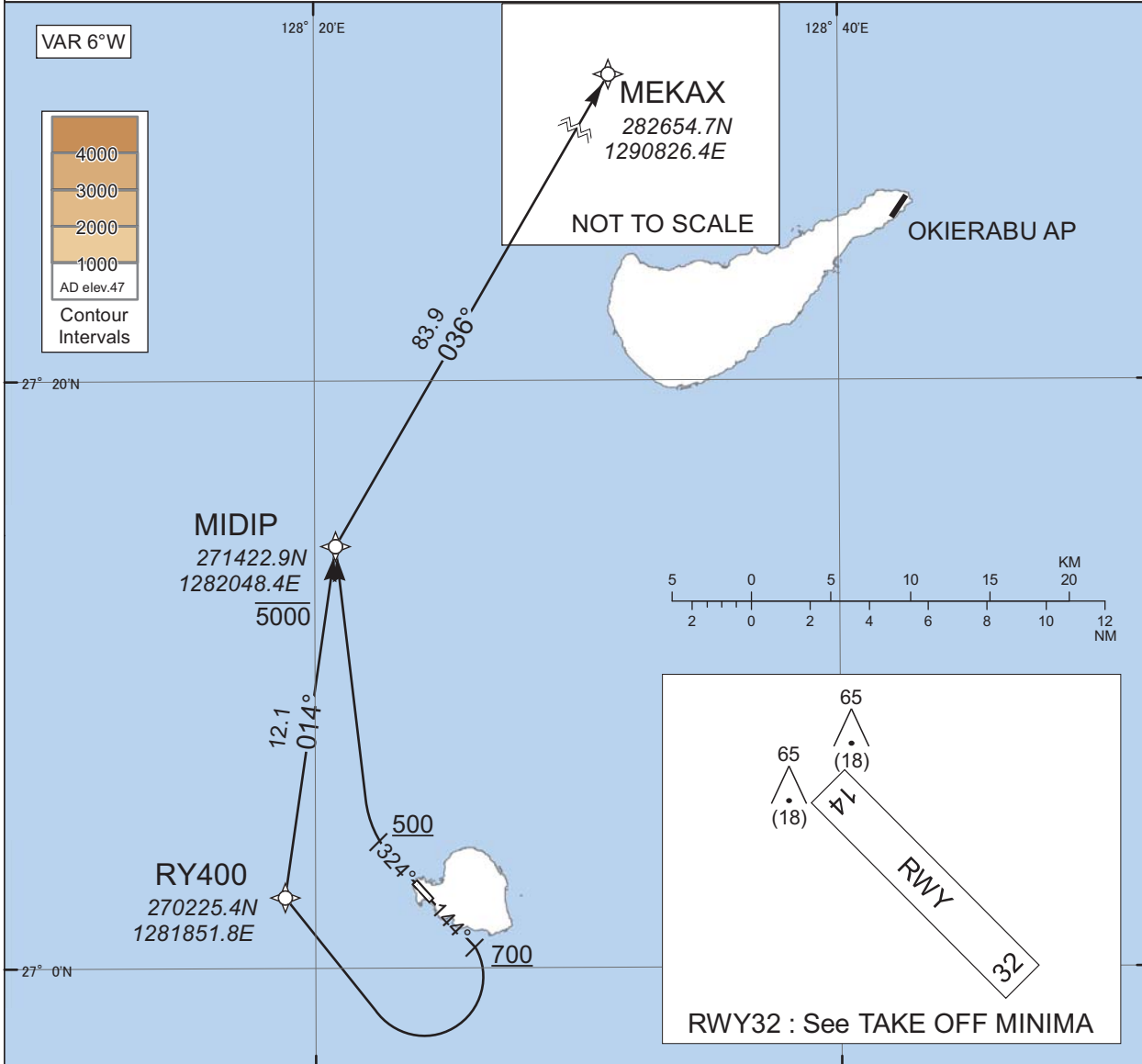
RORY / YORON

RNAV SID

MEKAX ONE DEPARTURE

RNP1

Note GNSS required.



CHANGE : Navigation Specification(Basic RNP1 → RNP1).

RWY14 : Climb on HDG144° at or above 700FT, turn right direct to RY400, to MIDIP at or below 5000FT, to MEKAX.

RWY32 : Climb on HDG324° at or above 500FT, turn right direct to MIDIP at or below 5000FT, to MEKAX.

Note RWY14 : 5.0% climb gradient required up to 700FT.
OBST ALT 353FT located at 1.5NM 127° FM end of RWY14.

STANDARD DEPARTURE CHART-INSTRUMENT

RORY / YORON

RNAV SID

MEKAX ONE DEPARTURE

RWY14

Serial Number	Path Descriptor	Waypoint Identifier	Fly Over	Course °M(°T)	Magnetic Variation	Distance (NM)	Turn Direction	Altitude (FT)	Speed (KIAS)	Vertical Angle	Navigation Specification
001	VA	-	-	144 (138.2)	-6.0	-	-	+700	-	-	RNP1
002	DF	RY400	-	-	-6.0	-	R	-	-	-	RNP1
003	TF	MIDIP	-	014 (008.2)	-6.0	12.1	-	-5000	-	-	RNP1
004	TF	MEKAX	-	036 (030.0)	-6.0	83.9	-	-	-	-	RNP1

RWY32

Serial Number	Path Descriptor	Waypoint Identifier	Fly Over	Course °M(°T)	Magnetic Variation	Distance (NM)	Turn Direction	Altitude (FT)	Speed (KIAS)	Vertical Angle	Navigation Specification
001	VA	-	-	324 (318.2)	-6.0	-	-	+500	-	-	RNP1
002	DF	MIDIP	-	-	-6.0	-	R	-5000	-	-	RNP1
003	TF	MEKAX	-	036 (030.0)	-6.0	83.9	-	-	-	-	RNP1

CHANGE : Navigation Specification(Basic RNP1 → RNP1).

STANDARD DEPARTURE CHART-INSTRUMENT

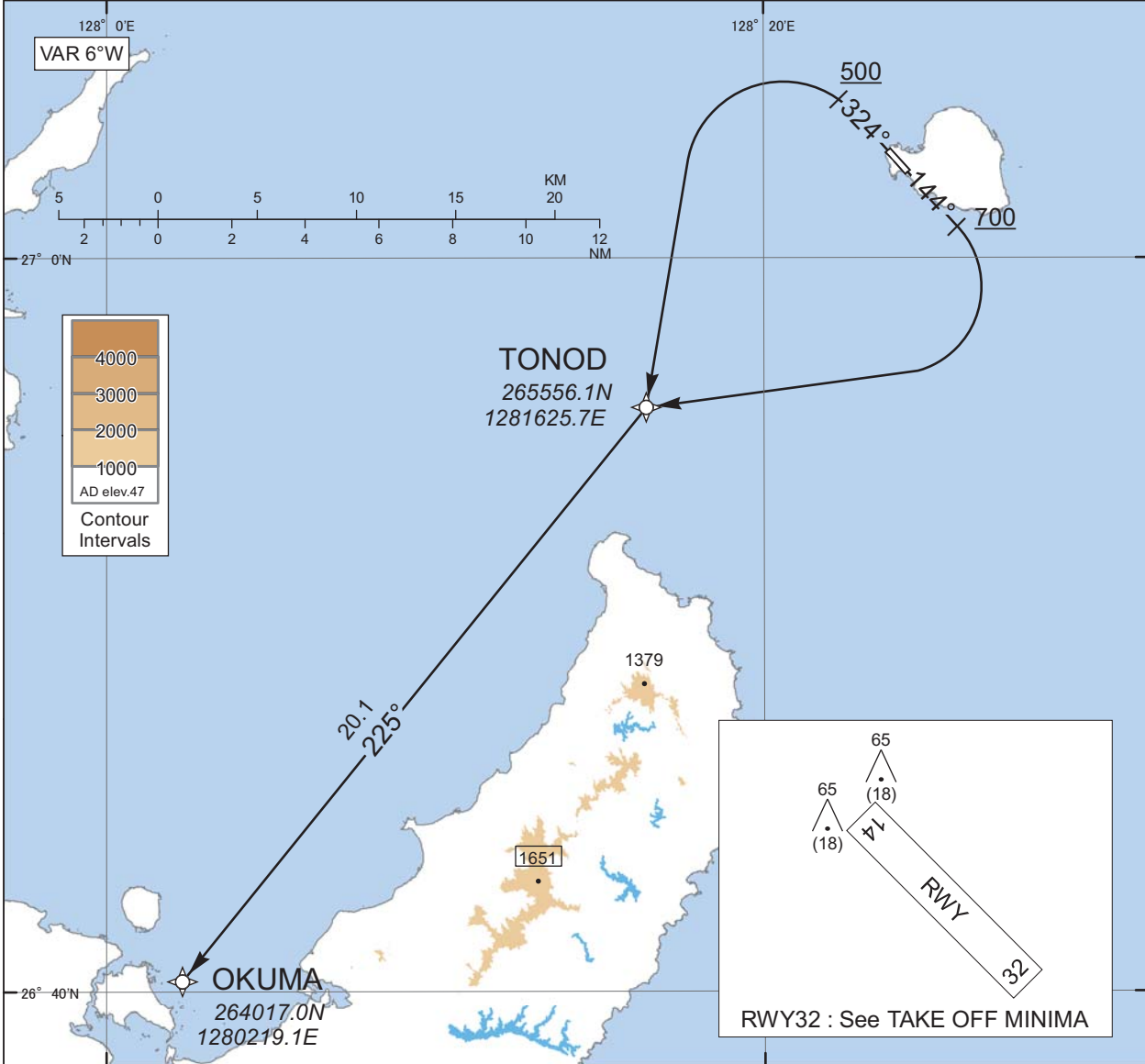
RORY / YORON

RNAV SID

TOMORI ONE DEPARTURE

RNP1

Note GNSS required.



CHANGE : Navigation Specification(Basic RNP1 → RNP1).

RWY14 : Climb on HDG144° at or above 700FT, turn right direct to TONOD, to OKUMA.
RWY32 : Climb on HDG324° at or above 500FT, turn left direct to TONOD, to OKUMA.

Note RWY14 : 5.0% climb gradient required up to 700FT.
OBST ALT 353FT located at 1.5NM 127° FM end of RWY14.

STANDARD DEPARTURE CHART-INSTRUMENT

RORY / YORON

RNAV SID

TOMORI ONE DEPARTURE

RWY14

Serial Number	Path Descriptor	Waypoint Identifier	Fly Over	Course °M(°T)	Magnetic Variation	Distance (NM)	Turn Direction	Altitude (FT)	Speed (KIAS)	Vertical Angle	Navigation Specification
001	VA	-	-	144 (138.2)	-6.0	-	-	+700	-	-	RNP1
002	DF	TONOD	-	-	-6.0	-	R	-	-	-	RNP1
003	TF	OKUMA	-	225 (218.9)	-6.0	20.1	-	-	-	-	RNP1

RWY32

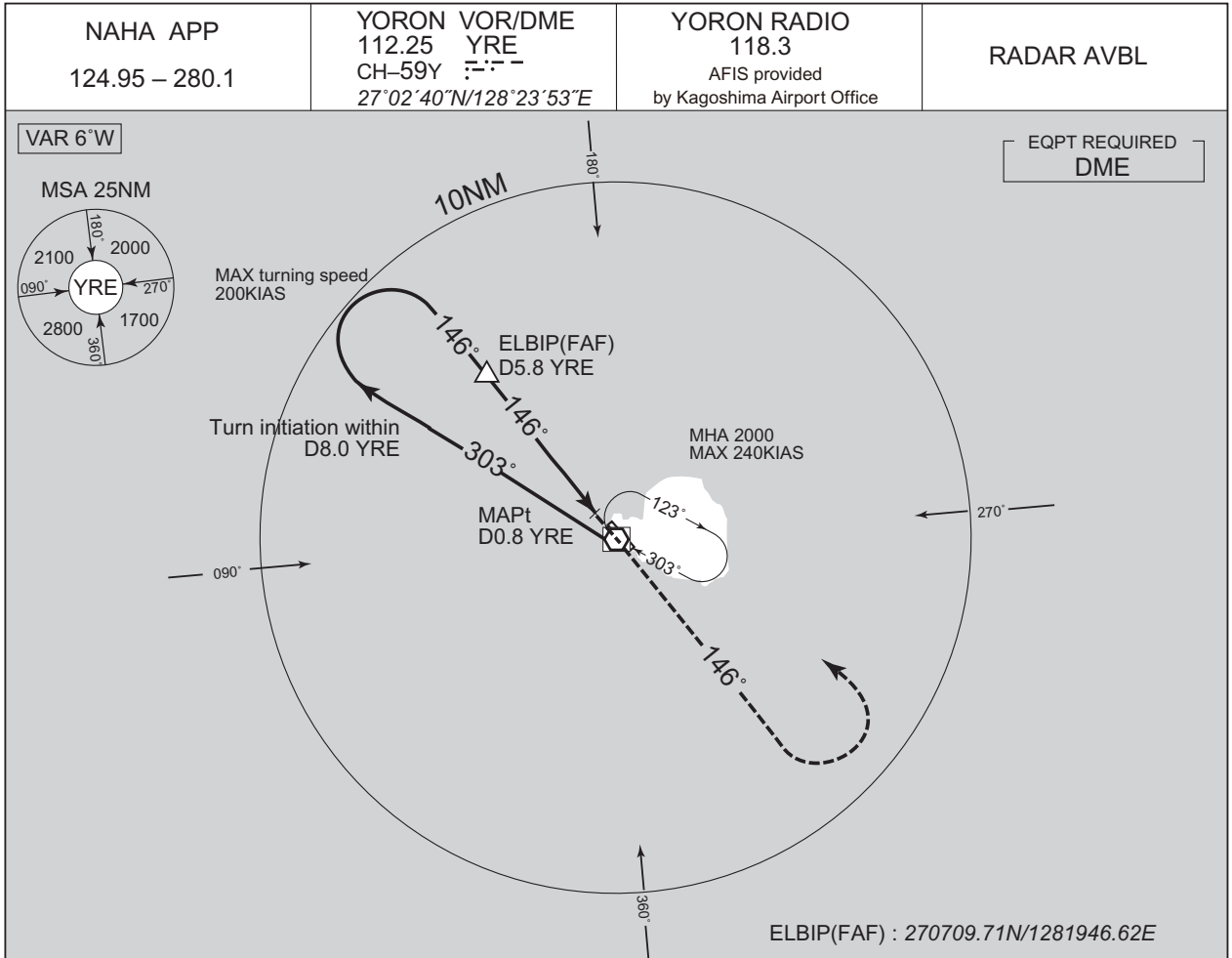
Serial Number	Path Descriptor	Waypoint Identifier	Fly Over	Course °M(°T)	Magnetic Variation	Distance (NM)	Turn Direction	Altitude (FT)	Speed (KIAS)	Vertical Angle	Navigation Specification
001	VA	-	-	324 (318.2)	-6.0	-	-	+500	-	-	RNP1
002	DF	TONOD	-	-	-6.0	-	L	-	-	-	RNP1
003	TF	OKUMA	-	225 (218.9)	-6.0	20.1	-	-	-	-	RNP1

CHANGE : Navigation Specification(Basic RNP1 → RNP1).

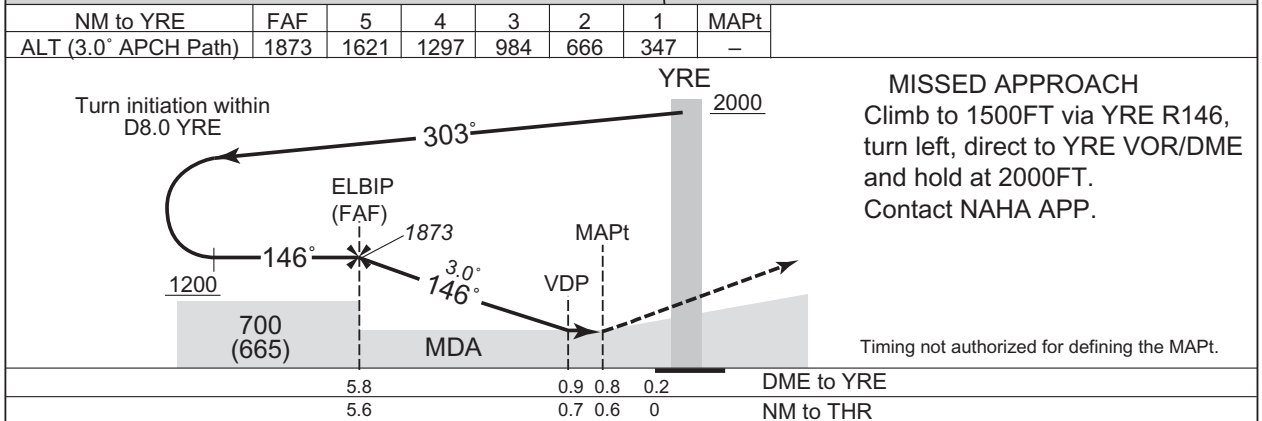
INSTRUMENT APPROACH CHART

RORY / YORON

VOR RWY14



CHANGE : Description of RADAR Service. Missed APCH PROC.



MISSED APPROACH
Climb to 1500FT via YRE R146, turn left, direct to YRE VOR/DME and hold at 2000FT. Contact NAHA APP.

Missed APCH climb gradient MNM 3.7%

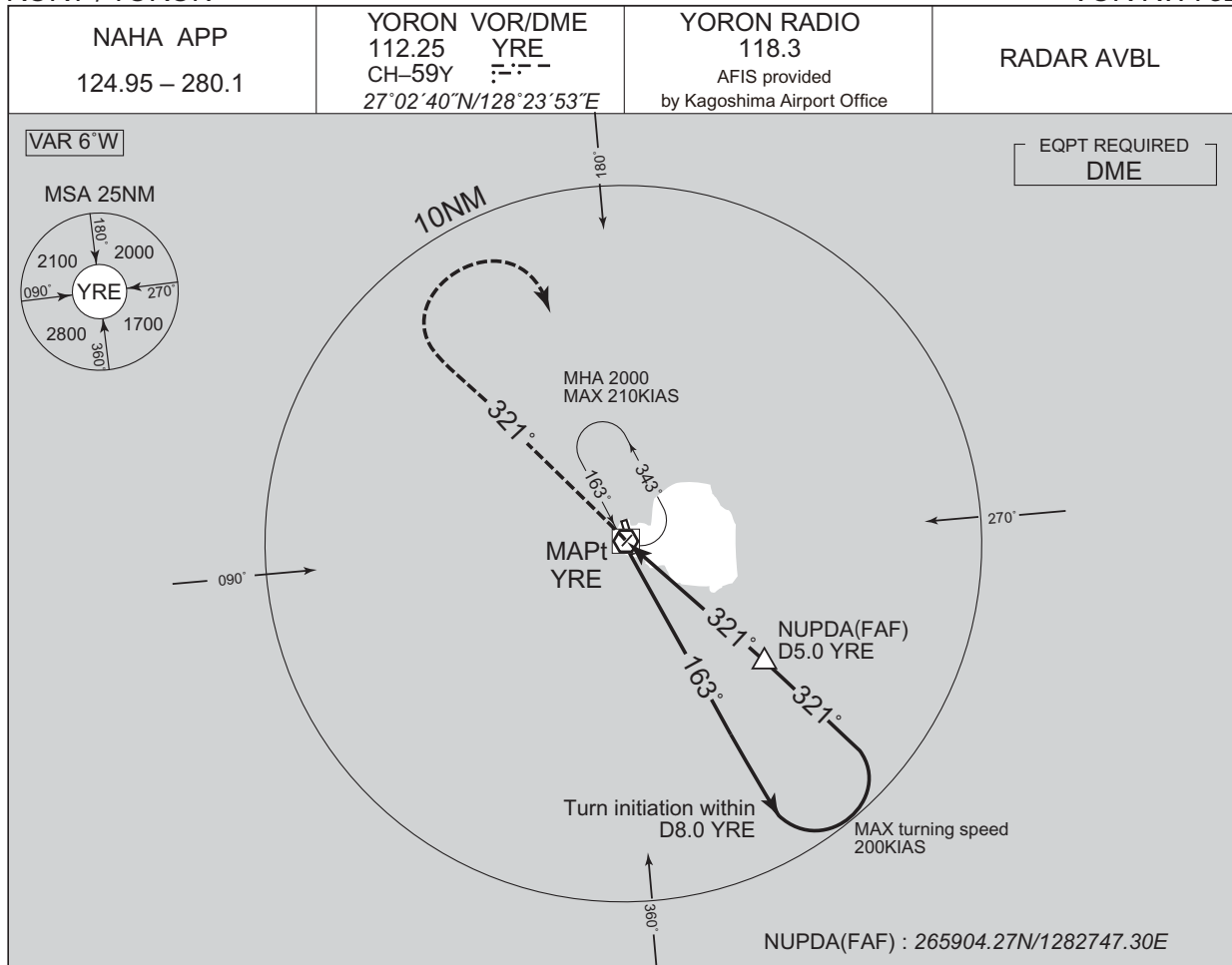
MINIMA		THR elev. 35	AD elev. 47	
CAT			CIRCLING	
	MDA(H)	CMV	MDA(H)	VIS
A	290 (255)	1500	530 (483)	1600
B			680 (633)	
C			1600	2400
D	—	—	—	—

MINIMA with Missed APCH climb gradient of 2.5% are not established. Circling to WEST side of RWY only.

INSTRUMENT APPROACH CHART

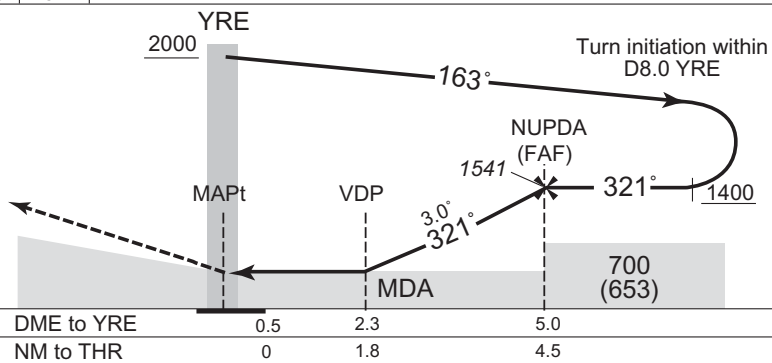
RORY / YORON

VOR RWY32



CHANGE : Description of RADAR Service. Missed APCH PROC.

MISSED APPROACH
Climb to 1500FT via YRE R321, turn right, direct to YRE VOR/DME and hold at 2000FT. Contact NAHA APP.



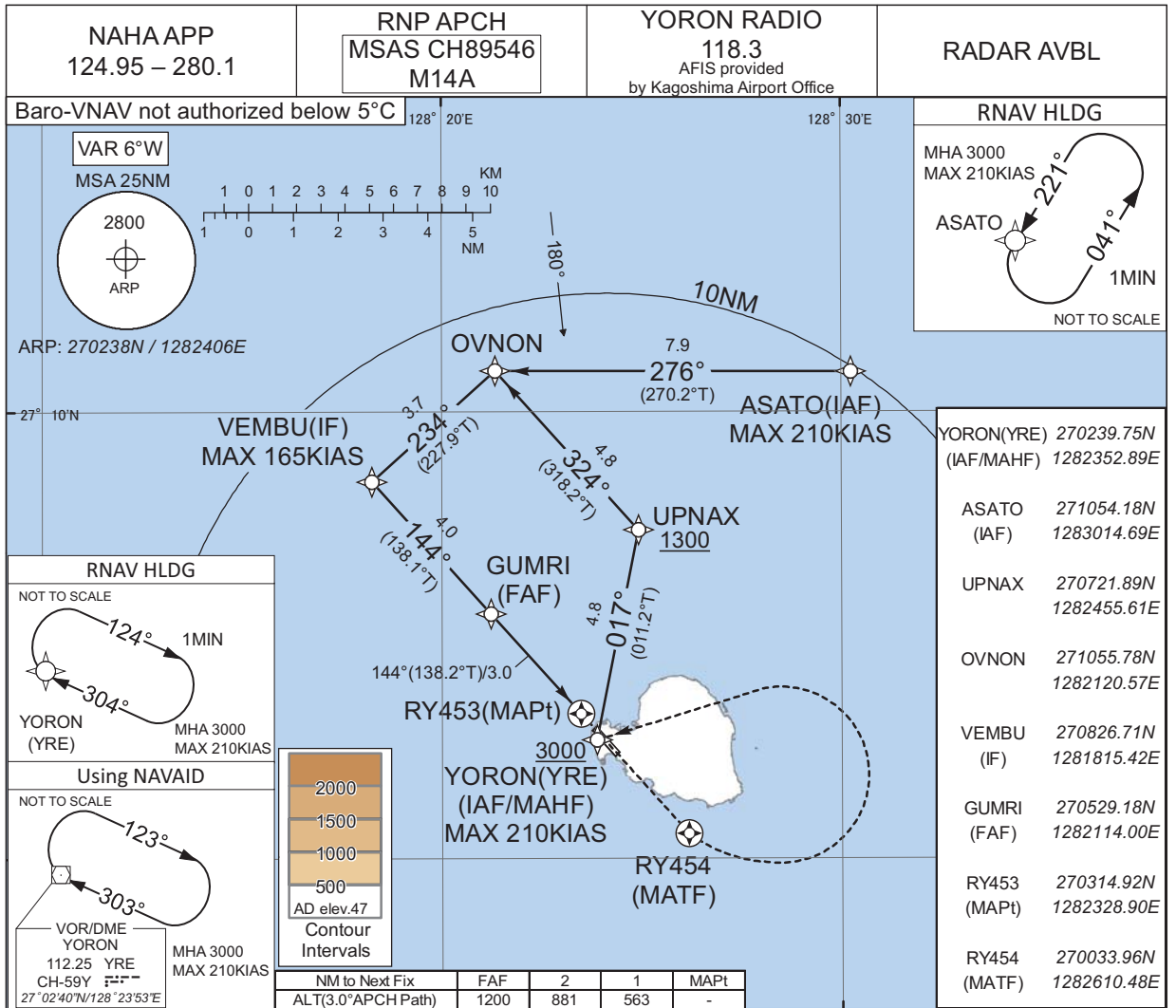
MINIMA		THR elev. 52	AD elev. 47	
CAT	MDA(H)	CMV	CIRCLING	
			MDA(H)	VIS
A	630 (583)	1500	630 (583)	1600
B			680 (633)	
C				2000
D	-	-	-	-

Circling to WEST side of RWY only.

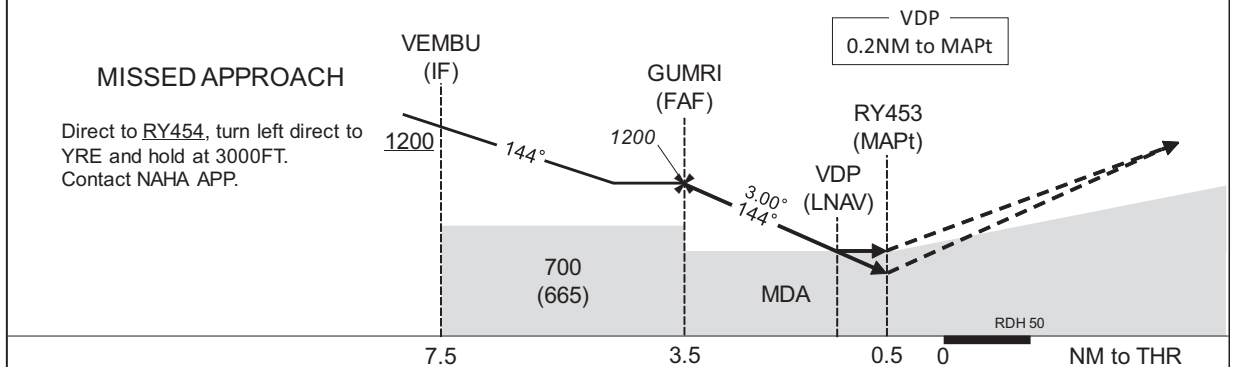
INSTRUMENT APPROACH CHART

RORY / YORON

RNP RWY14



CHANGE : Description of RADAR Service. Missed APCH PROC.



Missed APCH climb gradient MNM 5.0%

MINIMA	THR elev. 35	AD elev. 47						
CAT	LPV		LNAV/VNAV		LNAV		CIRCLING	
	DA(H)	CMV	DA(H)	CMV	MDA(H)	CMV	MDA(H)	VIS
A	285(250)	1500	300(265)	1500	300(265)	1500	530(483)	1600
B		1600		1600		680(633)		
C		-		-		-	2400	
D	-	-	-	-	-	-	-	-

MINIMA with Missed APCH climb gradient of 2.5% are not established.
Circling to WEST side of RWY only.

INSTRUMENT APPROACH CHART

RORY / YORON

RNP RWY14

FAS DATA BLOCK

Operation type	0	LTP/FTP ellipsoidal height	+00421
SBAS service provider identifier	2	FPAP latitude	270211.4935N
Airport identifier	RORY	FPAP longitude	1282432.5860E
Runway	14	Threshold crossing height	00015.0
Approach performance designator	0	TCH units selector	1
Route indicator		Glide path angle	03.00
Reference path data selector	0	Course width at threshold	105.00
Reference path ID	M14A	∠ length offset	0496
LTP/FTP latitude	270252.4555N	HAL	40.0
LTP/FTP longitude	1282351.4800E	VAL	50.0
CRC remainder	B6A26D6F		

Required additional data

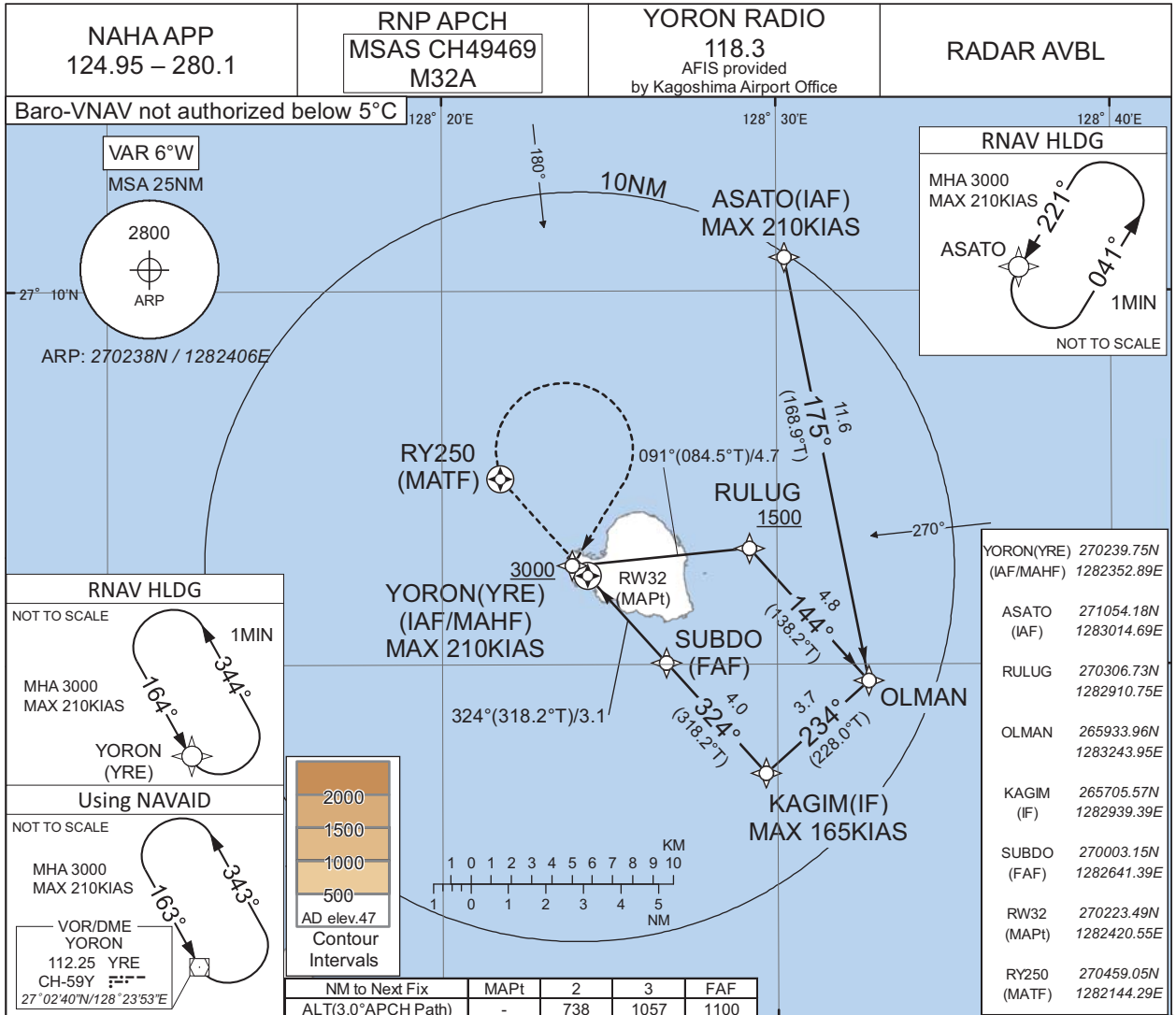
LTP/FTP orthometric height	10.7
----------------------------	------

CHANGE : FAS DATA BLOCK ITEM and Required additional data ITEM established.

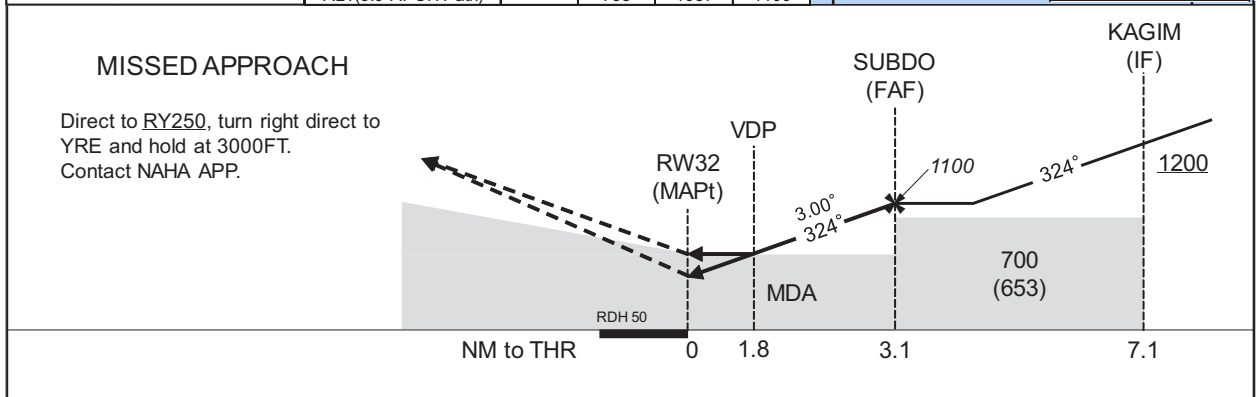
INSTRUMENT APPROACH CHART

RORY / YORON

RNP RWY32



CHANGE : Description of RADAR Service. Missed APCH PROC.



CAT	LPV		LNAV/VNAV		LNAV		CIRCLING	
	DA(H)	CMV	DA(H)	CMV	MDA(H)	CMV	MDA(H)	VIS
A	302(250)	1500	640(588)	1500	640(593)	1500	640(593)	1600
B		1600					680(633)	
C	-	-	-	2000	-	2000	-	2400
D	-	-	-	-	-	-	-	-

Circling to WEST side of RWY only.

INSTRUMENT APPROACH CHART

RORY / YORON

RNP RWY32

FAS DATA BLOCK

Operation type	0	LTP/FTP ellipsoidal height	+00472
SBAS service provider identifier	2	FPAP latitude	270304.4175N
Airport identifier	RORY	FPAP longitude	1282339.4735E
Runway	32	Threshold crossing height	00015.0
Approach performance designator	0	TCH units selector	1
Route indicator		Glide path angle	03.00
Reference path data selector	0	Course width at threshold	105.00
Reference path ID	M32A	∠ length offset	0496
LTP/FTP latitude	270223.4560N	HAL	40.0
LTP/FTP longitude	1282420.5825E	VAL	50.0
CRC remainder	977D3979		

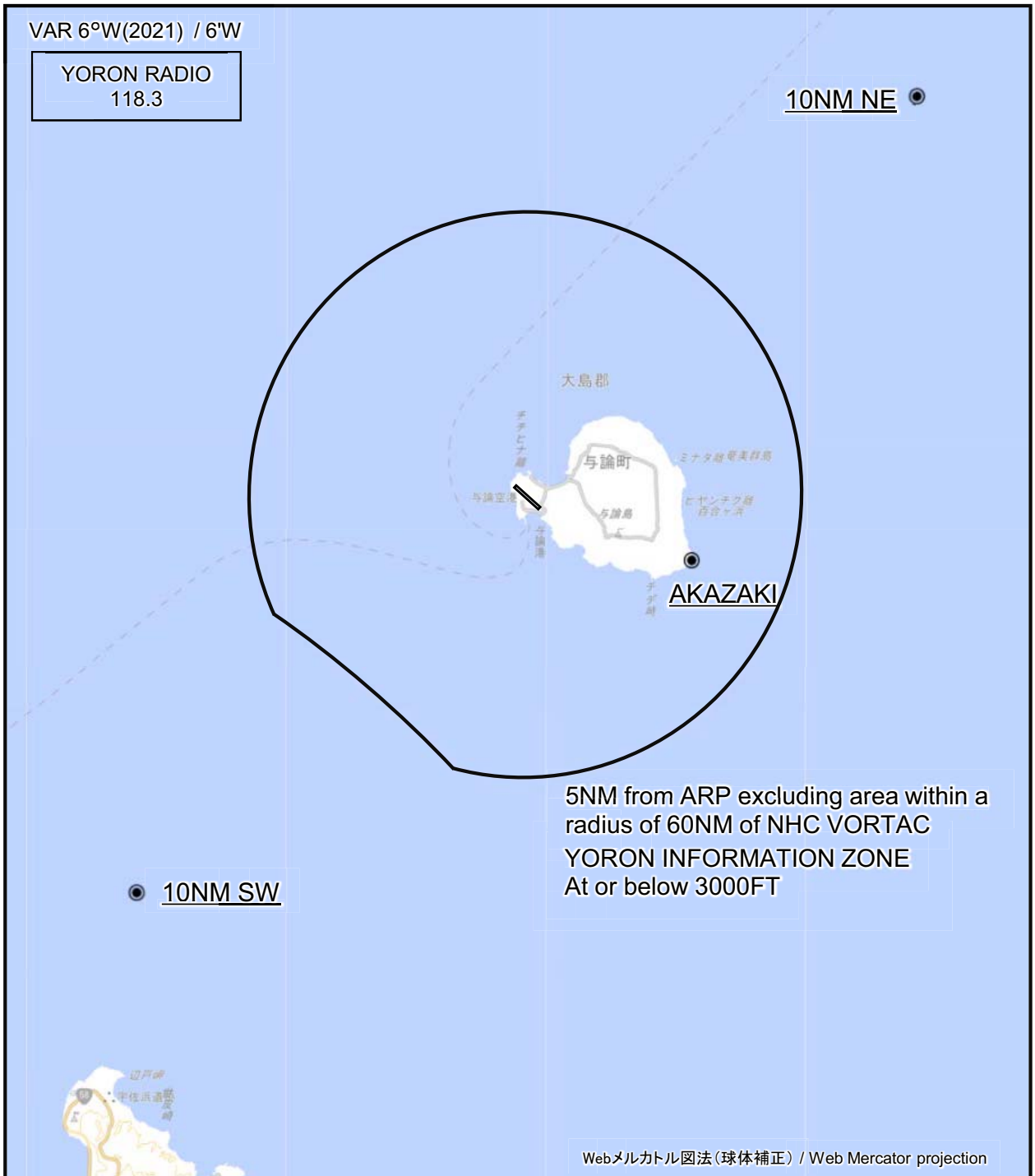
Required additional data

LTP/FTP orthometric height	15.8
----------------------------	------

CHANGE : FAS DATA BLOCK ITEM and Required additional data ITEM established.

RORY / YORON

Visual REP



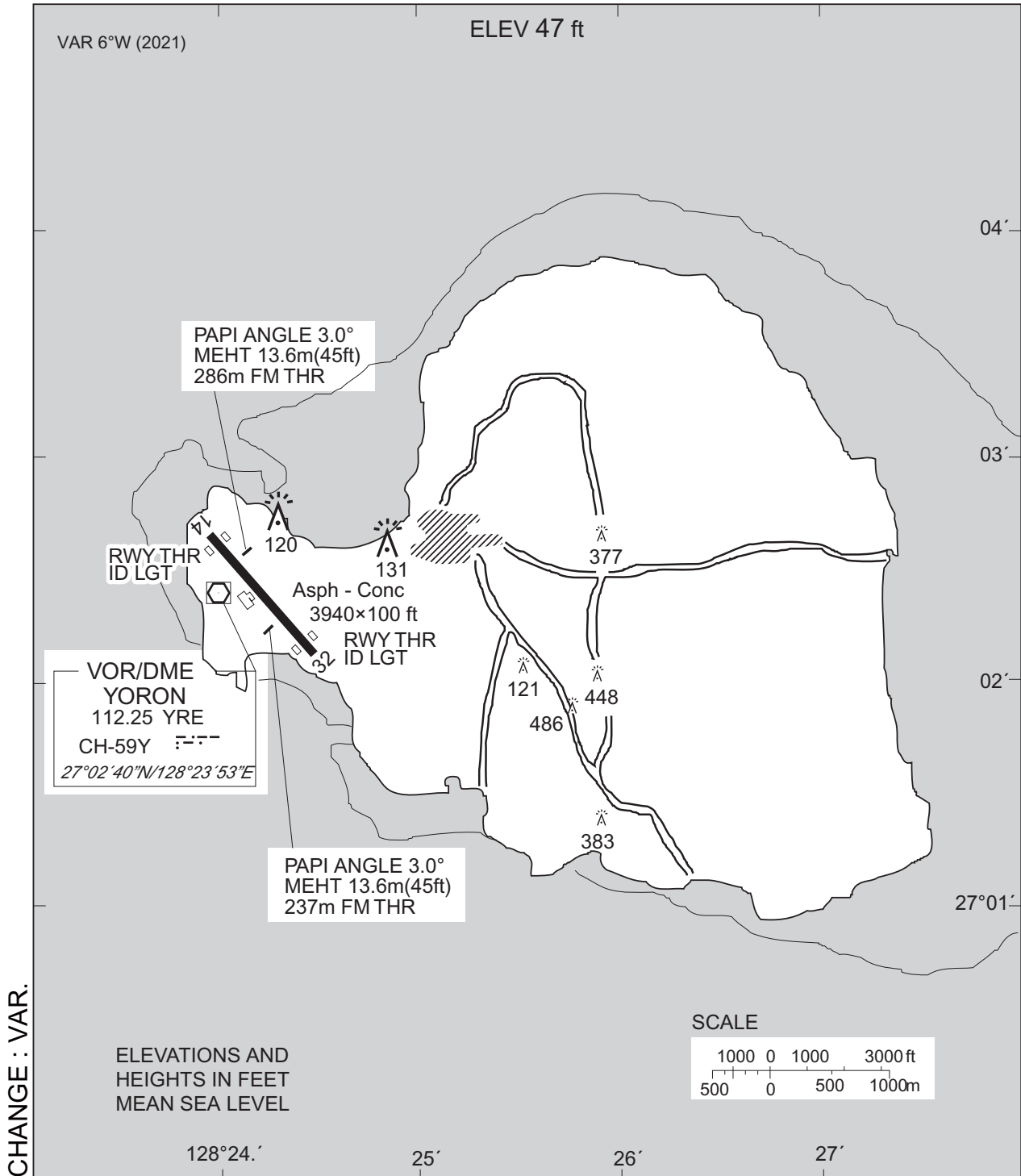
※図中に標高を示す数字がある場合、単位はメートル(m)である。The unit of measurement used to express elevation is meter(m).

Call sign	BRG / DIST from ARP	Remarks
10NM NE	045°T / 10.0NM	海上 Over the sea
赤崎 Akazaki	111°T / 3.2NM	灯台 Lighthouse
10NM SW	225°T / 10.0NM	海上 Over the sea

CHANGE : VAR.

RORY / YORON

LDG CHART



RORY / YORON

Minimum Vectoring Altitude CHART

