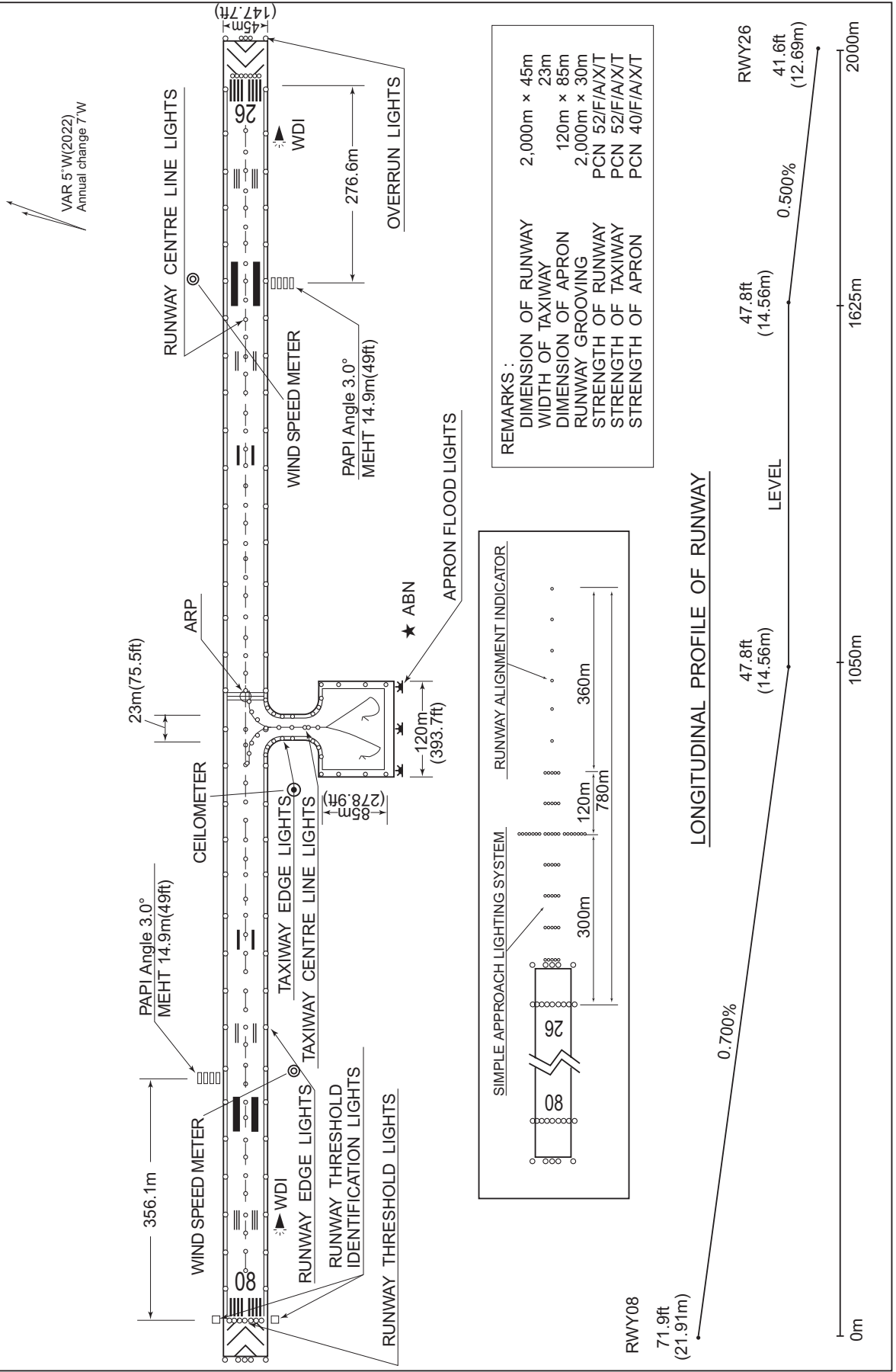


ROYN / YONAGUNI

AD CHART

CHANGE : VAR.

YONAGUNI AIRPORT



STANDARD DEPARTURE CHART -INSTRUMENT

ROYN / YONAGUNI

SID

TAKZO TWO DEPARTURE

RWY 08 : Climb RWY HDG until 3NM from RWY end/YNE 2.7DME, turn left,...

RWY 26 : Climb RWY HDG until 700FT, turn right, ...climb via YNE R022 to TAKZO.

Note RWY08 : 6.7% climb gradient required up to 700FT.

OBST ALT 89FT located at 0.1NM 126° FM end of RWY08.

RWY26 : No turn before DER.

In case of climbing with 9.0 % gradient up to 900FT, another TKOF WX MINIMA is applicable.

OBST ALT 358FT located at 0.6NM 236° FM end of RWY26,

OBST ALT 912FT located at 2.1NM 115° FM end of RWY26.

ABASA TWO DEPARTURE

RWY 08 : Climb RWY HDG until 3NM from RWY end/YNE 2.7DME, turn right,...

RWY 26 : Climb RWY HDG until 700FT, turn right, ...climb via YNE R101 to ABASA.

Note RWY08 : 6.7% climb gradient required up to 700FT.

OBST ALT 89FT located at 0.1NM 126° FM end of RWY08.

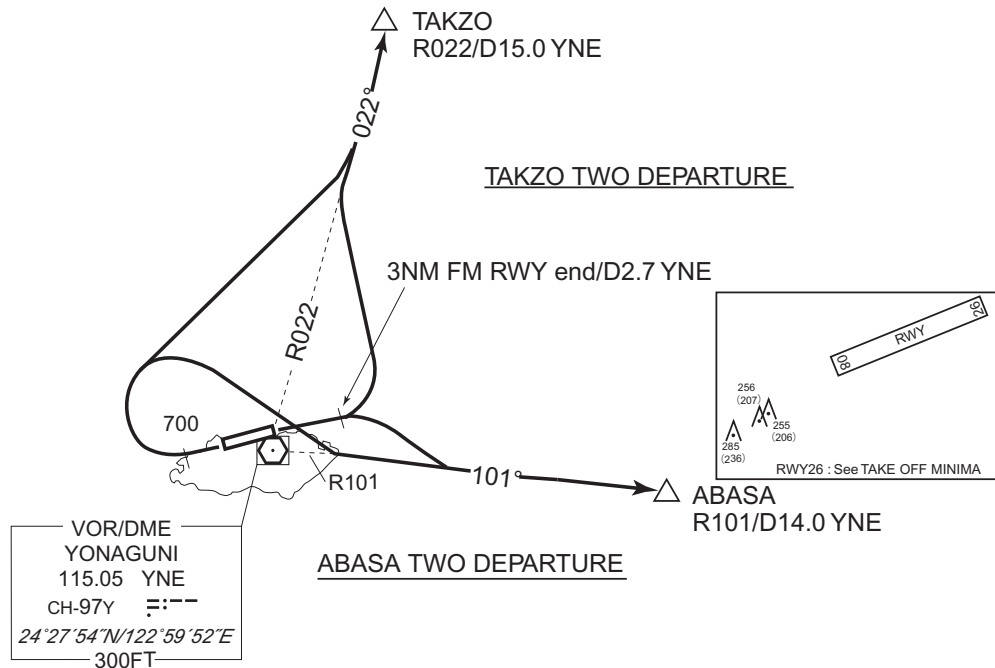
RWY26 : No turn before DER.

In case of climbing with 9.0 % gradient up to 900FT, another TKOF WX MINIMA is applicable.

OBST ALT 358FT located at 0.6NM 236° FM end of RWY26,

OBST ALT 912FT located at 2.1NM 115° FM end of RWY26.

CHANGE : PROC renamed. Radial FM YNE. Note RWY08 added. OBST chart added.



STANDARD DEPARTURE CHART -INSTRUMENT

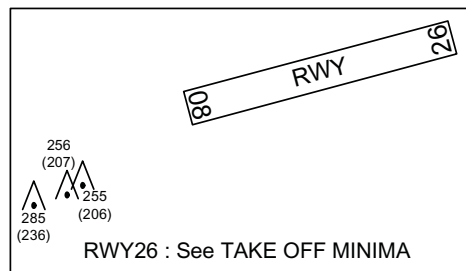
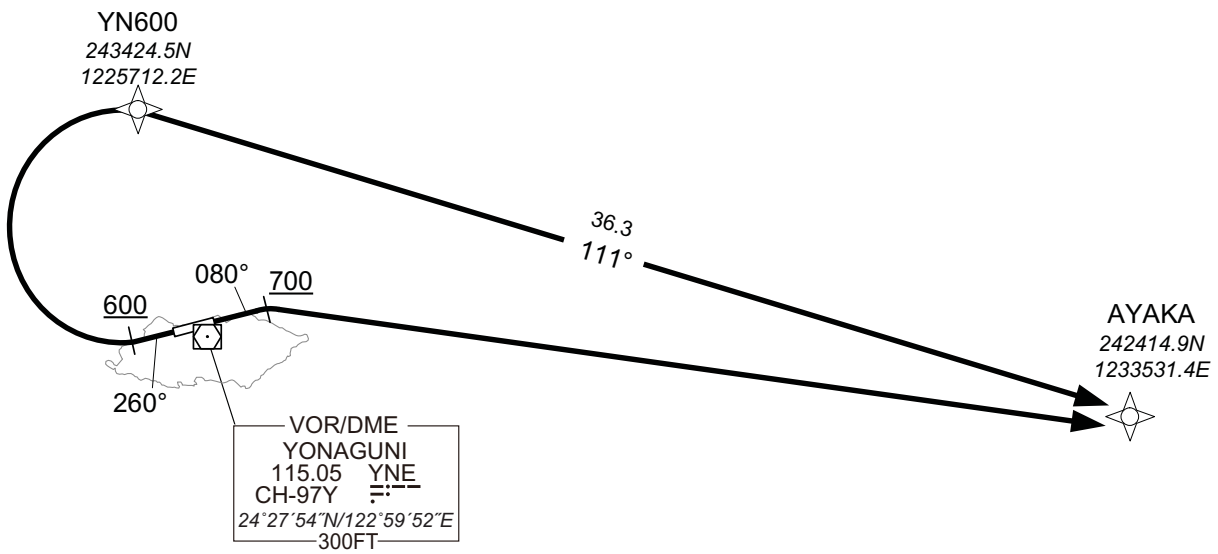
ROYN / YONAGUNI

RNAV SID

AYAKA ONE DEPARTURE	RNP1
---------------------	------

Note GNSS required.

VAR 5°W



CHANGE : Navigation Specification(Basic RNP1 → RNP1).

RWY08 : Climb on HDG080° at or above 700FT, turn right direct to AYAKA.
 RWY26 : Climb on HDG260° at or above 600FT, turn right direct to YN600,to AYAKA.

Note RWY08 : 6.7% climb gradient required up to 700FT.
 OBST ALT 89FT located at 0.1NM 126° FM end of RWY08.

RWY26 : In case of climbing with 7.2% gradient up to 600FT, another TKOF WX
 MINIMA is applicable.
 OBST ALT 271FT located at 0.5NM 237° FM end of RWY26.

STANDARD DEPARTURE CHART -INSTRUMENT

ROYN / YONAGUNI

RNAV SID

AYAKA ONE DEPARTURE

RWY08

Serial Number	Path Descriptor	Waypoint Identifier	Fly Over	Course °M(°T)	Magnetic Variation	Distance (NM)	Turn Direction	Altitude (FT)	Speed (KIAS)	Vertical Angle	Navigation Specification
001	VA	-	-	080 (075.2)	-4.6	-	-	+700	-	-	RNP1
002	DF	AYAKA	-	-	-4.6	-	R	-	-	-	RNP1

RWY26

Serial Number	Path Descriptor	Waypoint Identifier	Fly Over	Course °M(°T)	Magnetic Variation	Distance (NM)	Turn Direction	Altitude (FT)	Speed (KIAS)	Vertical Angle	Navigation Specification
001	VA	-	-	260 (255.2)	-4.6	-	-	+600	-	-	RNP1
002	DF	YN600	-	-	-4.6	-	R	-	-	-	RNP1
003	TF	AYAKA	-	111 (106.1)	-4.6	36.3	-	-	-	-	RNP1

CHANGE : Navigation Specification(Basic RNP1 → RNP1).

STANDARD ARRIVAL CHART-INSTRUMENT

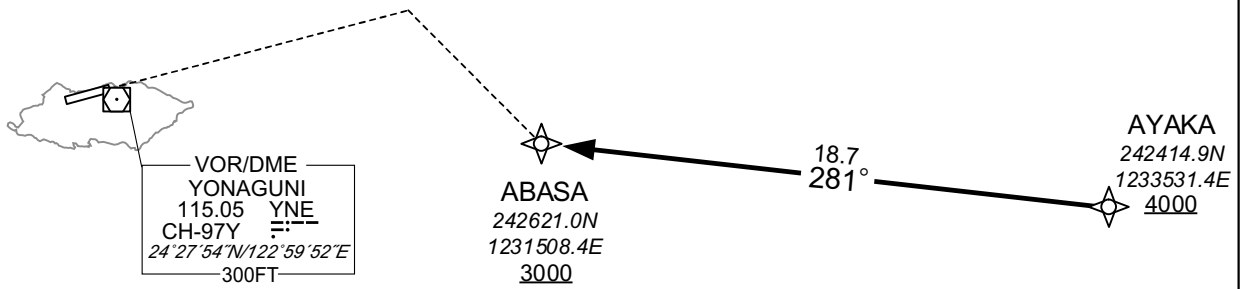
ROYN / YONAGUNI

RNAV STAR RWY26

ABASA ARRIVAL	RNP1
---------------	------

Note GNSS required.

VAR 5°W



CHANGE : Navigation Specification(Basic RNP1 → RNP1).

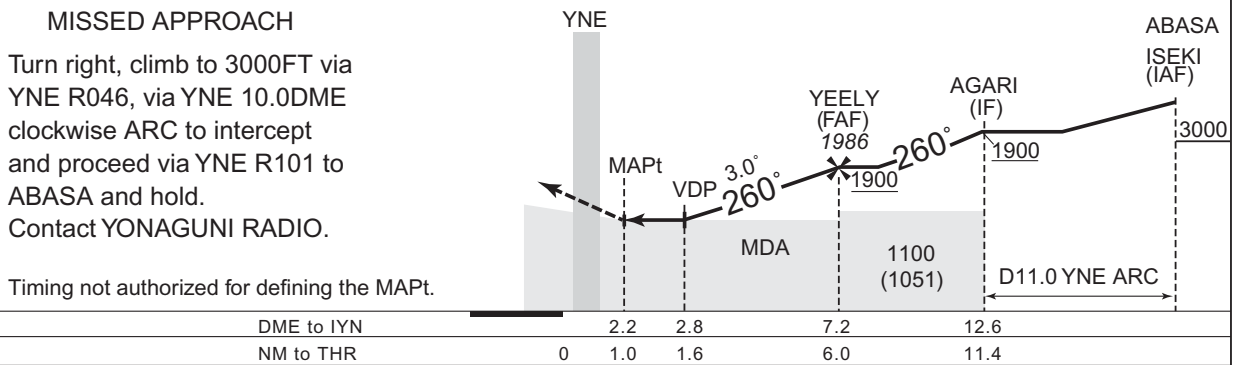
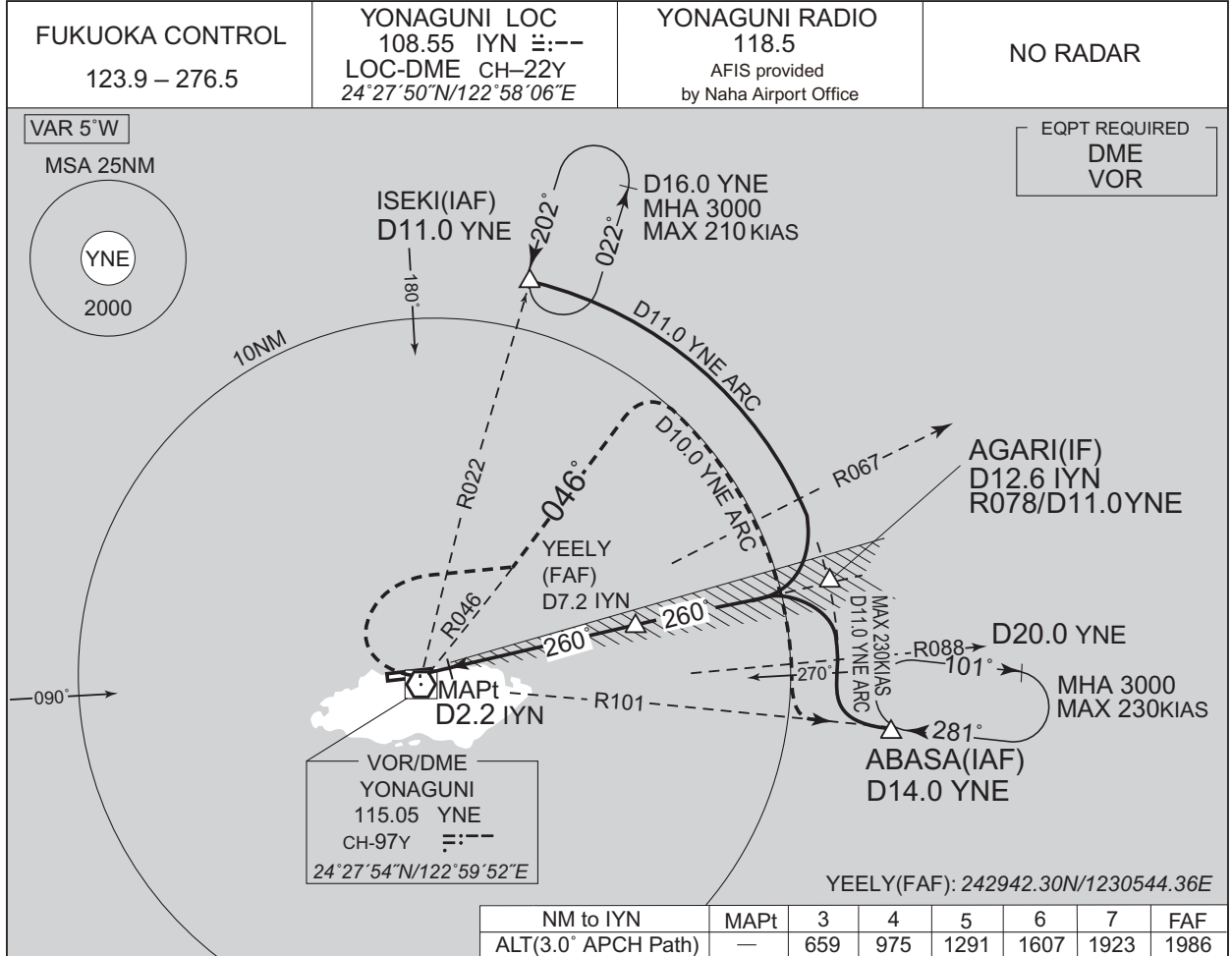
From AYAKA at or above 4000FT, to ABASA at or above 3000FT.

Serial Number	Path Descriptor	Waypoint Identifier	Fly Over	Course °M(°T)	Magnetic Variation	Distance (NM)	Turn Direction	Altitude (FT)	Speed (KIAS)	Vertical Angle	Navigation Specification
001	IF	AYAKA	—	—	-4.6	—	—	+4000	—	—	RNP1
002	TF	ABASA	—	281 (276.5)	-4.6	18.7	—	+3000	—	—	RNP1

INTENTIONALLY LEFT BLANK

INSTRUMENT APPROACH CHART

ROYN / YONAGUNI LOC RWY26



CHANGE : PROC course.

Missed APCH climb gradient MNM 5.0%

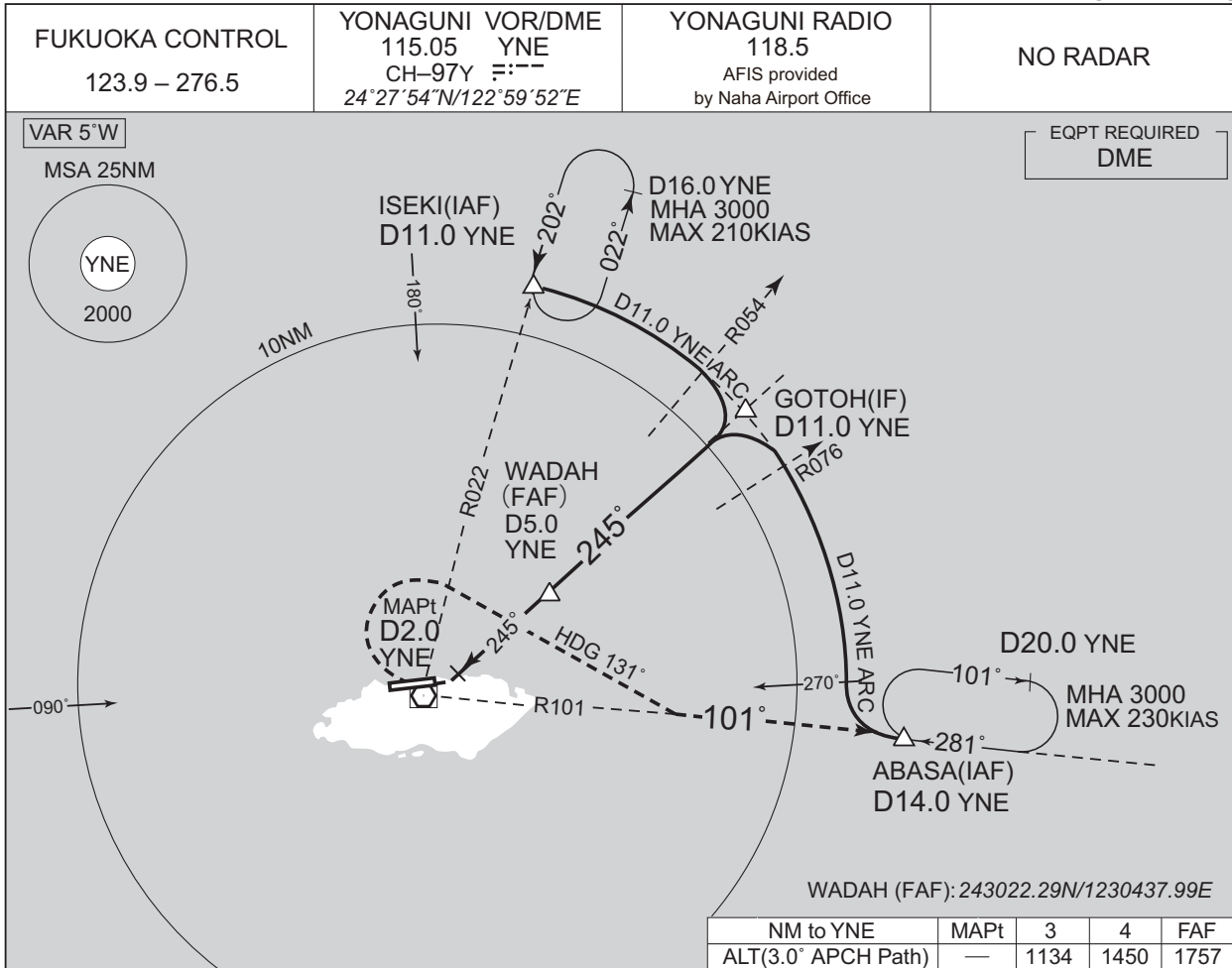
MINIMA	THR elev. 42	AD elev. 49		
CAT	CIRCLING			
	MDA(H)	CMV	MDA(H)	VIS
	A	1000	1020 (971)	1600
	B	570 (521)		1200
C	1600	3200		

MINIMA with Missed APCH climb gradient of 2.5% are not established.
Circling to NORTH side of RWY only.

INSTRUMENT APPROACH CHART

ROYN / YONAGUNI

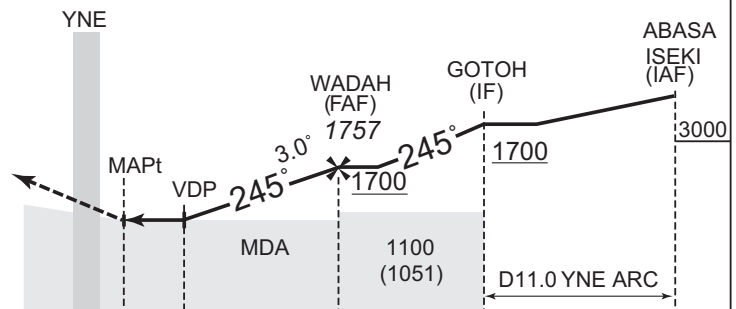
VOR RWY26



MISSED APPROACH

Turn right, climb to 3000FT via HDG 131° to intercept and proceed via YNE R101 to ABASA and hold.
Contact YONAGUNI RADIO.

Timing not authorized for defining the MAPt.



DME to YNE	0	2.0	2.3	5.0	11.0
NM to THR	0	2.3	2.6	5.3	11.3

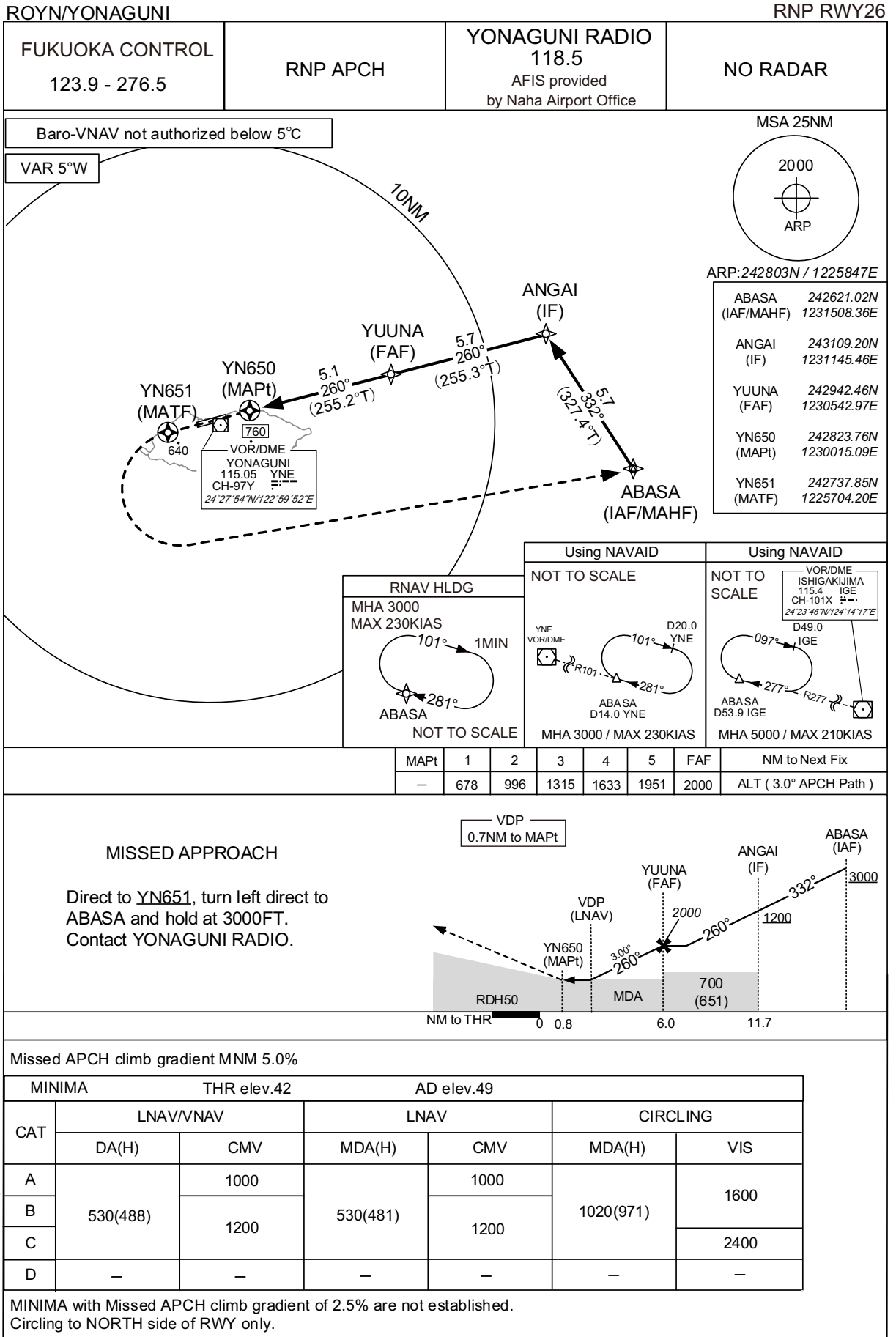
Missed APCH climb gradient MNM 5.0%

MINIMA		THR elev. 42	AD elev. 49	
CAT	MDA(H)		CIRCLING	
	MDA(H)	CMV	MDA(H)	VIS
A	880 (831)	1200	1020 (971)	1600
B		1400		
C		2400		
D		1800		

MINIMA with Missed APCH climb gradient of 2.5% are not established.
Circling to NORTH side of RWY only.

CHANGE : Description of VAR.

INSTRUMENT APPROACH CHART



CHANGE : Description of VAR.

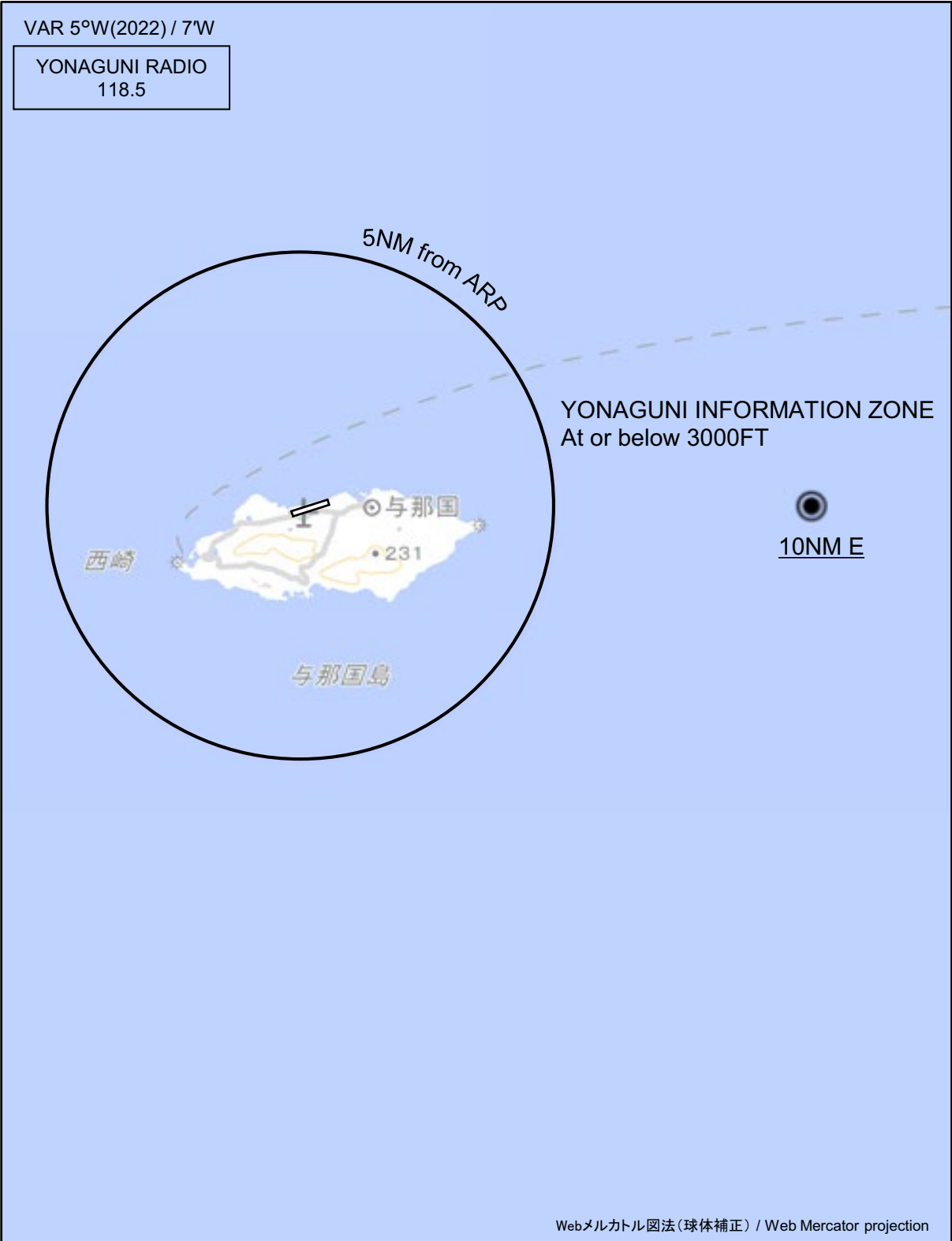
INTENTIONALLY LEFT BLANK

ROYN / YONAGUNI

Visual REP

VAR 5°W(2022) / 7°W

YONAGUNI RADIO
118.5



CHANGE : Map updated. BRG/DIST from ARP.

※図中に標高を示す数字がある場合、単位はメートル(m)である。The unit of measurement used to express elevation is meter(m).

Call sign	BRG / DIST from ARP	Remarks
10NM E	090°T / 10.0NM	海上 Over the sea

ROYN / YONAGUNI

Minimum Vectoring Altitude CHART

